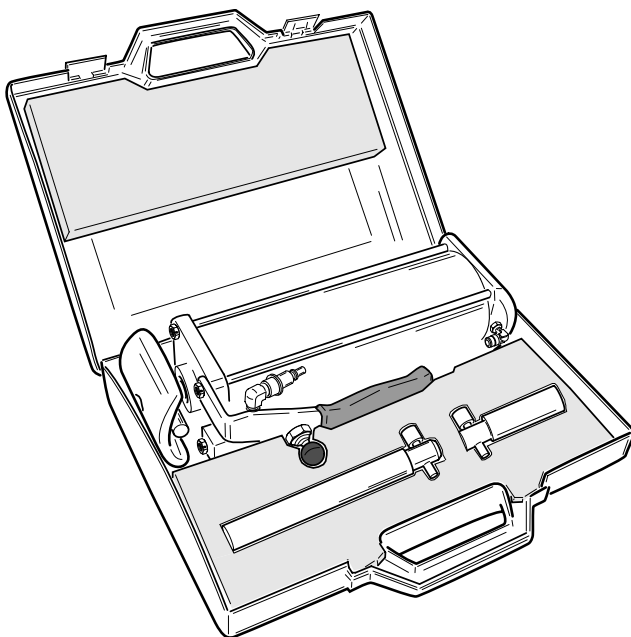




PSR PORTATILE PORTABLE

Cod. 4-103314 - 1.0 del 03/05



Italiano

Manuale d'uso

3

English

Operator's manual

17

Il diritto di traduzione, di memorizzazione elettronica, di riproduzione e di adattamento totale o parziale con qualsiasi mezzo (compresi microfilm e copie fotostatiche) sono riservati. Le informazioni contenute in questo manuale sono soggette a variazioni senza preavviso.

Italiano

All rights reserved. No part of this publication may be translated, stored in an electronic retrieval system, reproduced, or partially or totally adapted by any means (including microfilm and photostats) without prior permission. The information contained herein may be subject to modifications without prior notice.

English

Elaborazione grafica e impaginazione

Ufficio Pubblicazioni Tecniche

CONTENTS

INTRODUCTION	18
TRANSPORT, STORAGE AND HANDLING	19
Machine transport conditions	19
Ambient conditions for storage and transport	19
INSTALLATION SPACE/OVERALL DIMENSIONS	20
Ambient conditions for operation	20
COMPRESSED AIR HOOK-UP	20
SAFETY REGULATIONS	21
DESCRIPTION OF THE PSR PORTABLE	22
TECHNICAL DATA	22
SPECIFIED CONDITIONS OF USE	22
MAIN OPERATING PARTS	23
MOUNTING INSTRUCTIONS FOR EXTENSION	23
DEMOUNTING INSTRUCTIONS FOR PAX SUPPORT RING	24
MOUNTING INSTRUCTIONS FOR PAX SUPPORT RING	25
MAINTENANCE	26
INFORMATION ABOUT SCRAPPING	27
PNEUMATIC SYSTEM DIAGRAM	27
GLOSSARY	27
SPARE PARTS LIST	28
EC STATEMENT OF CONFORMITY	29

GB

INTRODUCTION

The purpose of this manual is to furnish the owner and operator with a set of practical, safe instructions for the use and maintenance of the PSR PORTABLE.

Follow all the instructions carefully and your machine will assist you in your work and give lasting, efficient service in keeping with CORGHI traditions.

The following points define the levels of danger regarding the machine, associated with the warning captions found in this manual:

DANGER

Immediate dangers which cause serious injury or death.

WARNING

Dangers or unsafe procedures that can cause serious injury or death.

ATTENTION

Dangers or unsafe procedures that can cause minor injuries or damage to property.

Read these instructions carefully before powering up the machine. Conserve this manual and all illustrative material supplied with the machine in a folder near the machine where it is readily accessible for consultation by the machine operators.

The technical documentation supplied is considered an integral part of the machine; in the event of sale all relative documentation must remain with the machine.

The manual is only to be considered valid for the machine of the model and with the serial number indicated on the nameplate applied to it.



WARNING

Adhere to the contents of this manual: Corghi declines all liability in the case of uses of the machine not specifically described.

Note

Some of the illustrations in this manual have been taken from photographs of prototypes: standard production machines may vary in some respects.

These instructions are for the attention of persons with basic mechanical skills. We have therefore omitted detailed descriptions of procedures such as how to loosen or tighten the fixing devices on the machine. Do not attempt to perform operations unless properly qualified and with suitable experience. In case of need, please contact an authorised Service Centre for assistance.

TRANSPORT, STORAGE AND HANDLING

Machine transport conditions

The PSR PORTABLE must be transported in its original packing (Fig.1) and maintained in the position shown on the packing itself (fig.2).

- Packaging dimensions:

- width 400 mm
- depth 320 mm
- height 100 mm
- Weight of packaging: 5,5 kg

Ambient conditions for storage and transport

- Temperature: -25°C +55°C.



WARNING

Do not stack other goods on top of the packaging or damage may result.



fig.1

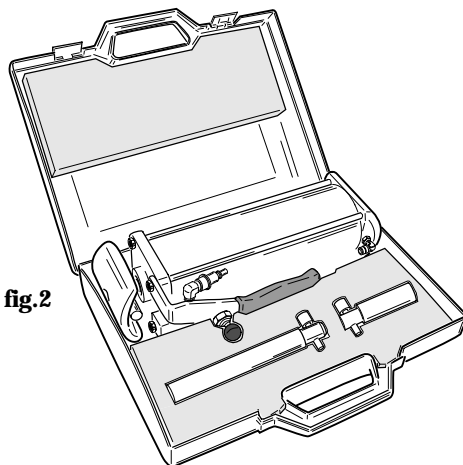


fig.2

GB

INSTALLATION SPACE/OVERALL DIMENSIONS

IMPORTANT: for correct, safe use of the machine, users must ensure a lighting level of at least 300 lux in the place of use.

Ambient conditions for operation

- Relative humidity 30% - 95% without condensation.
- Temperature $0^{\circ}\text{C} \div 50^{\circ}\text{C}$.

COMPRESSED AIR HOOK-UP

Connect the machine to the compressed air supply system (fig. 3)

For correct operation of the machine the compressed air supply line must provide a pressure range from no less than 8 bar to no more than 10 bar.

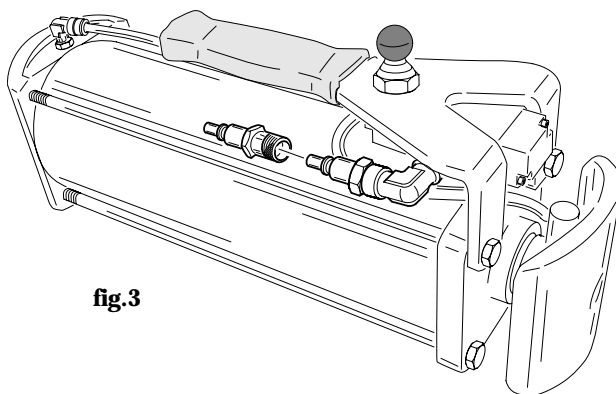


fig.3

SAFETY REGULATIONS

The equipment is intended for professional use only.



WARNING

Only one operator may use the equipment at a time.



WARNING

Failure to comply with the instructions and the danger warnings can cause serious injury to the operator and others in the area. Before powering up the machine, read and ensure you understand all the danger, warning and attention notices in this manual. This machine can only be used properly by a qualified, authorised operator capable of understanding the written instructions provided by the producer; he must also be trained and be familiar with the safety regulations. Operators must not use the machine under the influence of alcohol or drugs which may affect their physical and mental capacity.

The following conditions are essential in all cases:

- The operator must be able to read and understand all the information in this manual.
- He must have a thorough knowledge of the capabilities and characteristics of this machine.
- Keep unauthorised persons well clear of the area of operations.
- Make sure the machine has been installed in compliance with all relevant regulations and legislation.
- Make sure that all machine operators are suitably trained, that they are capable of using the equipment correctly and that they are adequately supervised.
- Never leave nuts, bolts, tools or other equipment on the machine; they may become entrapped between moving parts.
- Read this manual carefully and learn how to use the machine correctly and safely.
- Always keep this operator's manual in an easily accessible place and consult it whenever necessary.



WARNING

Do not remove or deface the Danger, Warning or Instruction decals. Replace any missing or illegible decals. Missing or damaged decals can be obtained at your nearest Corgi dealer.

- When using and carrying out maintenance on the machine, observe the standardised industrial accident prevention regulations for high voltages.
- Unauthorised alterations to the machine relieve the constructor of all liability for any consequent damage or accidents. Specifically, tampering with or removing the safety devices is a breach of the regulations for safety in the workplace.



WARNING

When operating or servicing equipment tie back long hair and do not wear loose-fitting clothes, ties, necklaces, rings or wristwatches which could become entrapped by moving parts.

DESCRIPTION OF THE PSR PORTABLE

The PSR PORTABLE is a device intended to simplify the fitting or removal of supports in tyres.

It works on any type of tyre with dimensions as specified in the TECHNICAL DATA.

Ruggedly built, the machines work with the tyre kept in the horizontal position.

The operator carries out the operations using the control lever provided in the top of the device.

TECHNICAL DATA

- Tyre minimum diameter 380mm.
- Tyre maximum diameter 610mm.
- Tyre minimum width 155 mm (6.1")
- Tyre maximum width 330 mm (13")
- Cylinder force 6000 N (pressure 9 bar)
- Cylinder stroke 243 mm
- Compressed air supply:
 - Operating pressure 9 bar
 - Weight 5 Kg

SPECIFIED CONDITIONS OF USE

The PSR PORTABLE is designed solely for operating on tyres using the tools described in this manual.



WARNING

All other uses apart from those described are considered improper and unreasonable.



WARNING

When using the machine we advise strongly against the use of equipment not manufactured by CORGHI.



WARNING

To stop the machine in an emergency:

cut off the compressed air supply network by disconnecting the shut-off valve (snap coupling) (fig.3 - page 6).



WARNING

The PSR PORTABLE specifications cover the use of touring tyre mounting lubricant only.

MAIN OPERATING PARTS



WARNING

Get to know your machine: the best way to prevent accidents and obtain top performance is to get to know it well.

Learn the function and location of all controls.

Check carefully that all the machine's controls are working correctly.

To avoid accidents and injury, the machine must be installed properly, operated correctly and serviced regularly.

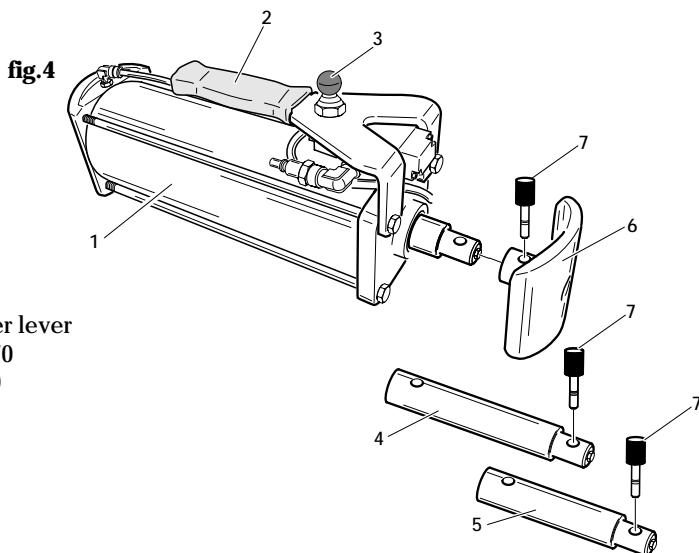


Fig.4

- 1) Cylindre
- 2) Handle
- 3) Cylindre starter lever
- 4) Extention l=170
- 5) Extention l=80
- 6) Thrust flange
- 7) Support pin

MOUNTING INSTRUCTIONS FOR EXTENTION

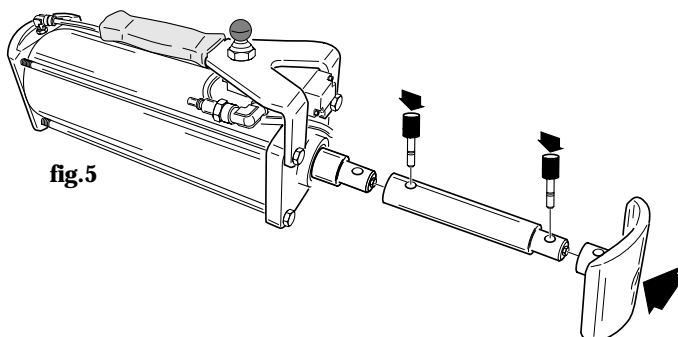


fig.5

GB

DEMOUNTING INSTRUCTIONS FOR PAX SUPPORT RING

1) Place the tire horizontally taking care that its inner side (larger diameter) is turned towards the operator (faced up) (fig.6).

Lubricate the bead with mounting lubricant in order to facilitate the demounting operation.

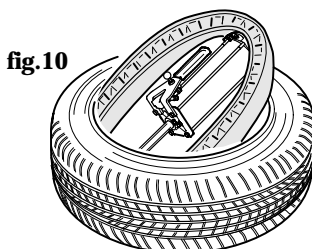
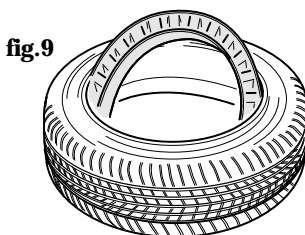
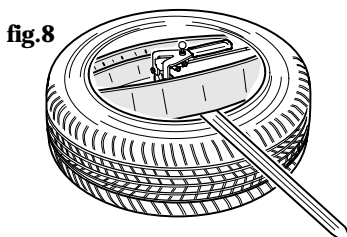
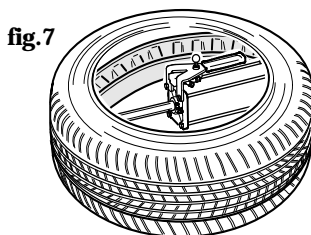
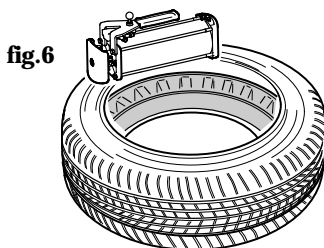
2) Insert the demounting tool into the PAX support ring and extend it in order to have a slight deformation of the tire (fig.7).

3) Manually take the PAX support ring out on one side and keep it in the right position by aid of a lever (fig.8).

4) Remove the demounting tool and make sure that a part of the PAX support ring is completely outside the tire bead (fig.9).

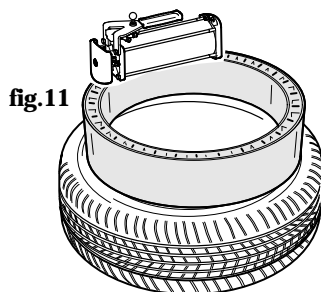
5) Position the demounting tool at 90 degrees from the previous position and extend the PAX support ring until it is completely out of the tyre (fig.10).
Remove the mounting tool from the PSR PORTABLE.

THE PAX SUPPORT RING IS COMPLETELY EXTRACTED.

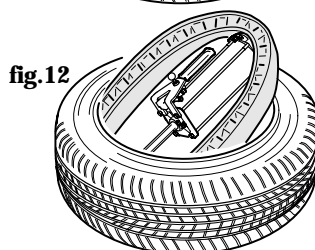


MOUNTING INSTRUCTIONS FOR PAX SUPPORT RING

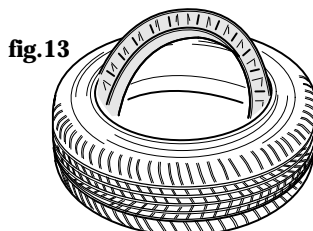
1) Place the tire horizontally taking care that its inner side (larger diameter) is turned towards the operator (faced up). Lubricate the bead with mounting lubricant in order to facilitate the mounting operation. Lubricate the outside part of the PAX support ring and position it following the manufacturer's own technical specifications compared to tire position (fig.11).



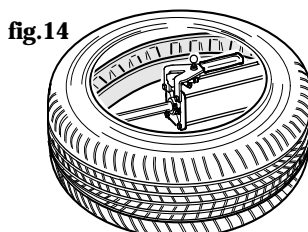
2) Insert the mounting tool into the PAX support ring and extend it longitudinally until it takes an oval shape. Insert a portion of the PAX support ring inside the tire (fig.12).



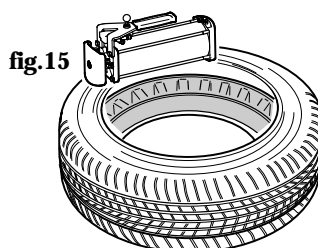
NOTE: If necessary use a lever in order to facilitate the entrance of the PAX support ring.



3) Make sure that more than an half of the PAX support ring is into the tire (fig. 13).



4) Position the mounting tool at 90 degrees from the previous position and extend the PAX support ring until it is completely inside the tire (fig.14).



5) Remove the mounting tool from the PAX support ring (fig.15).

THE PAX SUPPORT RING IS COMPLETELY INSERTED.

GB

MAINTENANCE



WARNING

CORGI declines all liability for claims deriving from the use of non-original spares or accessories.



WARNING

Any operation intended to modify the setting value of the relief valve or pressure limiter is forbidden.

The manufacturer declines all liability for damage resulting from tampering with these valves.



WARNING

Before carrying out any adjustment or maintenance procedure, disconnect the machine's compressed air supply and make sure that all moving parts are locked in place.



WARNING

Do not remove or modify any part of this machine (except for servicing).



WARNING

Before removing pneumatic system fittings or pipelines check that they do not contain pressure. Air escaping under pressure may cause serious injuries.



ATTENTION

Keep the working area clean.

Never use compressed air, jets of water or solvent to remove dirt or residues from the machine.

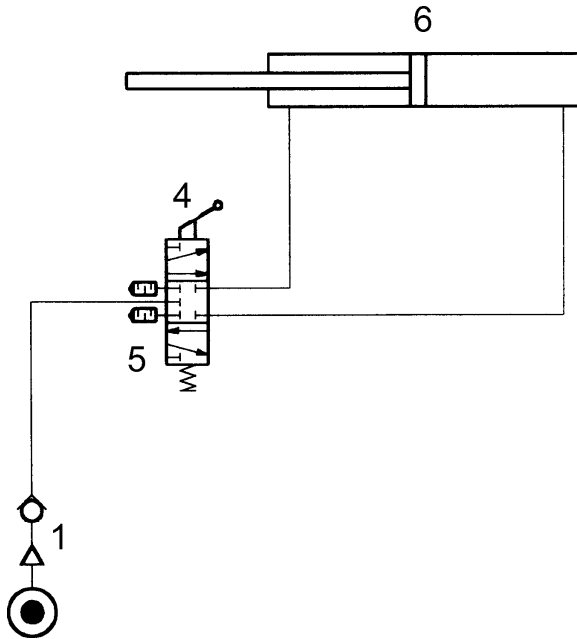
When cleaning, take care to avoid creating and raising dust as far as possible.

INFORMATION ABOUT SCRAPPING

If the machine is to be scrapped, first separate the plastic and ferrous parts. Then dispose of them separately as prescribed by law.

PNEUMATIC SYSTEM DIAGRAM

- 1 Snap connection
- 4 Cylinder travel drive control valve
- 5 Silencers
- 6 Cylinder



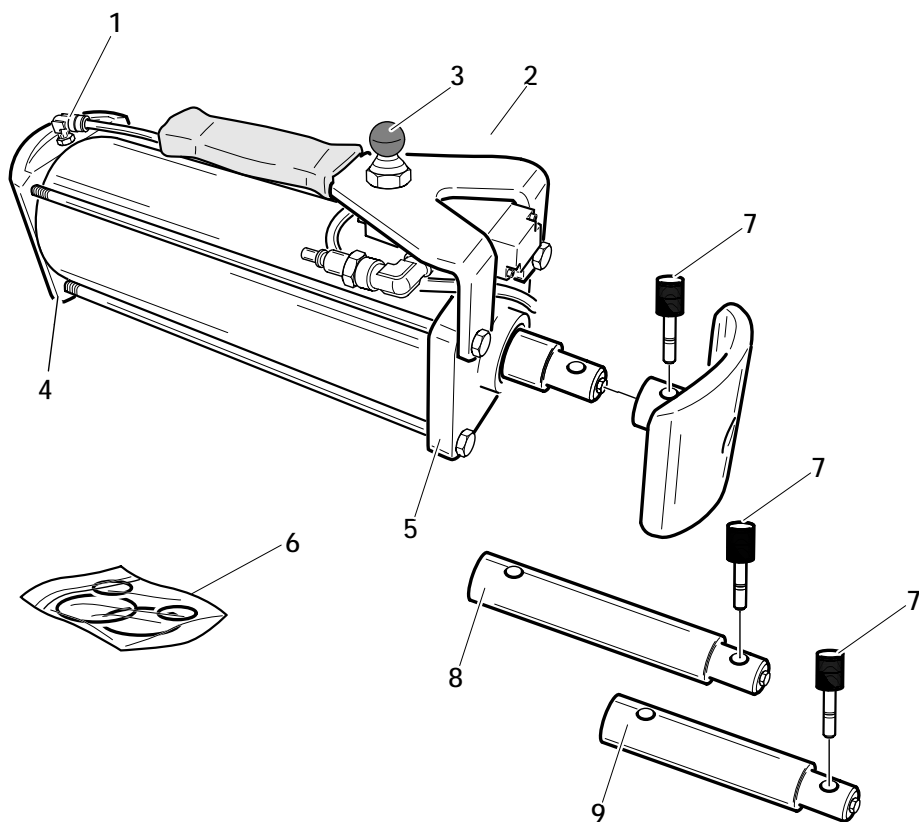
GLOSSARY

PAX Support Ring: this is a ring placed inside the wheel, which is mounted on the outside edge of the rim and provides the tyre with support in case of a puncture. It also allows the car to keep on travelling in safety. During mounting, special lubricating gel is applied between the inside of the tyre and the support. This means that if the car is driven with no pressure in the tyre, the tyre will not suffer friction damage.

Bead: Edge of the tyre in contact with the rim.

GB

SPARE PARTS LIST



POS.	COD.	DESCRIPTION
01	900443367	FITTING
02	900415279	MUFFLER
03	9003-01583	KNOB
04	9004-103281	REAR FLANGE
05	9004-103277	FRONT FLANGE
06	9005-101095	SEALS KIT
07	9004-103270	PIN
08	9004-103271	EXTENTION L = 170
09	9004-103272	EXTENTION L = 80

EC statement of conformity

We, CORGHI SPA, Strada Statale n°9, Correggio (RE), ITALY,
do hereby declare, that the product

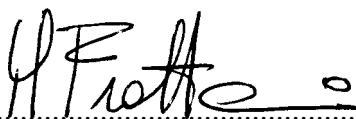
Extractor PSR Portatile

to which this statement refers, conforms to the following
standards or to other regulatory documents:

EN 292, 09/91

according to directives:
- 98/37/EEC.

Correggio, 20 / 01 / 05

A handwritten signature in black ink, appearing to read 'M. Frattesi', is written over a horizontal dotted line.

CORGHI S.p.A.

M. Frattesi

IMPORTANT: The EC Conformity Declaration is cancelled if the machine is not used exclusively with CORGHI original accessories and/or in observance of the instructions contained in the user's manual.

The form of this statement conforms to EN 45014 specifications.

GB



CORGHI S.p.A. - Via per Carpi, n.9
42015 CORREGGIO - R.E. - ITALY
Tel. ++39 0522 639.111 - Fax ++39 0522 639.150
www.corgi.com - info@corgi.com