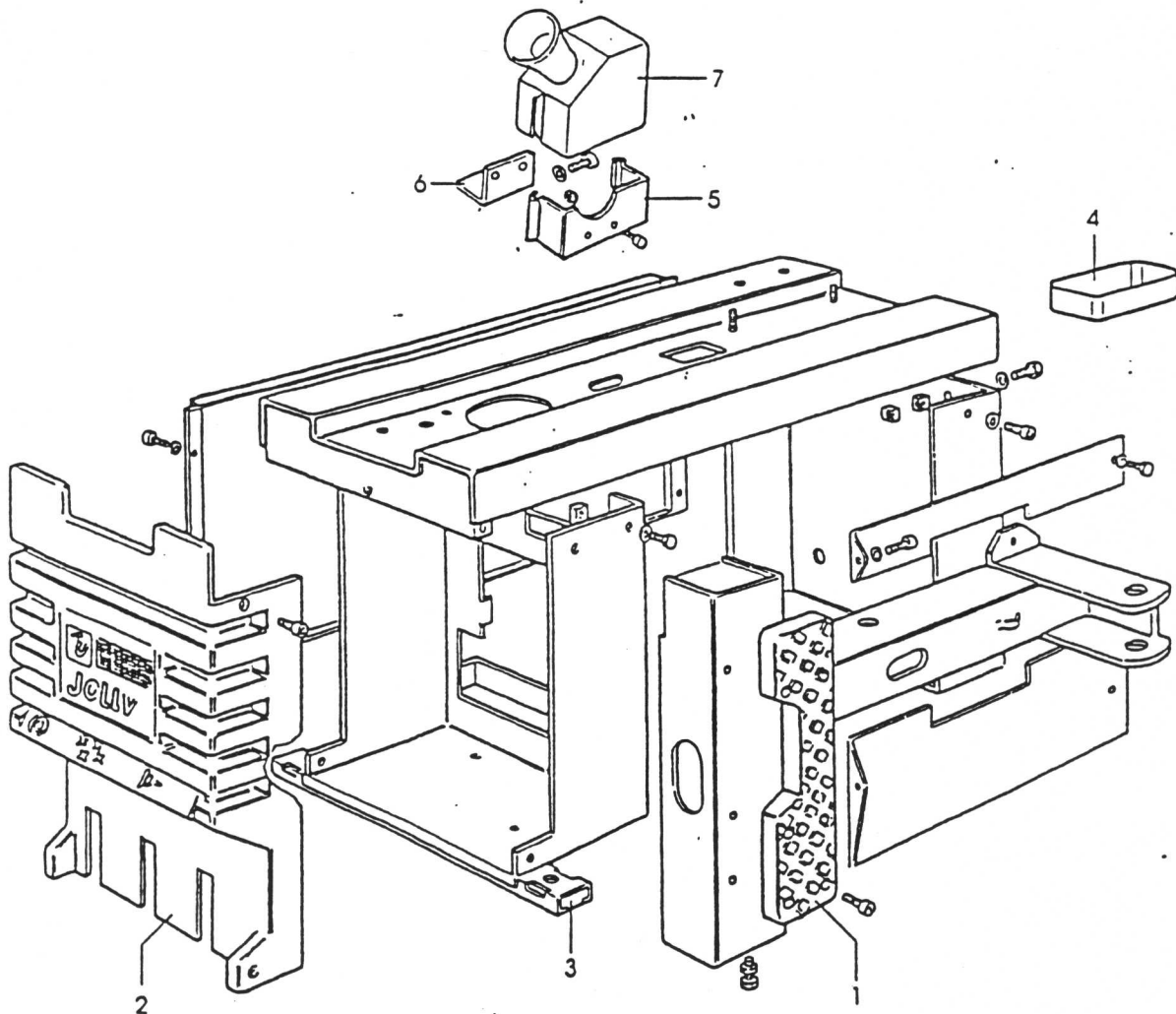


SPARE PARTS LIST

Production from: 11 / 93

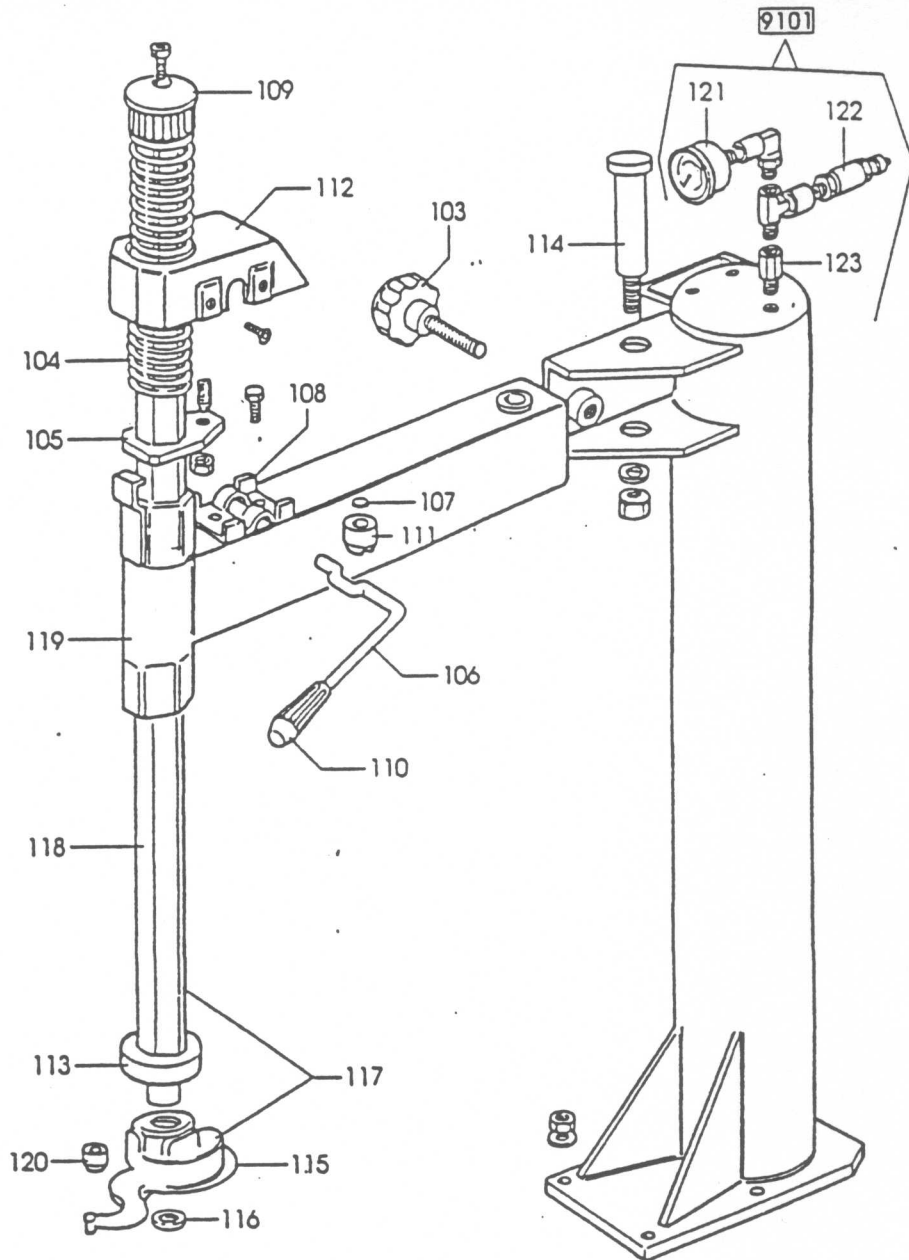


CORCHI



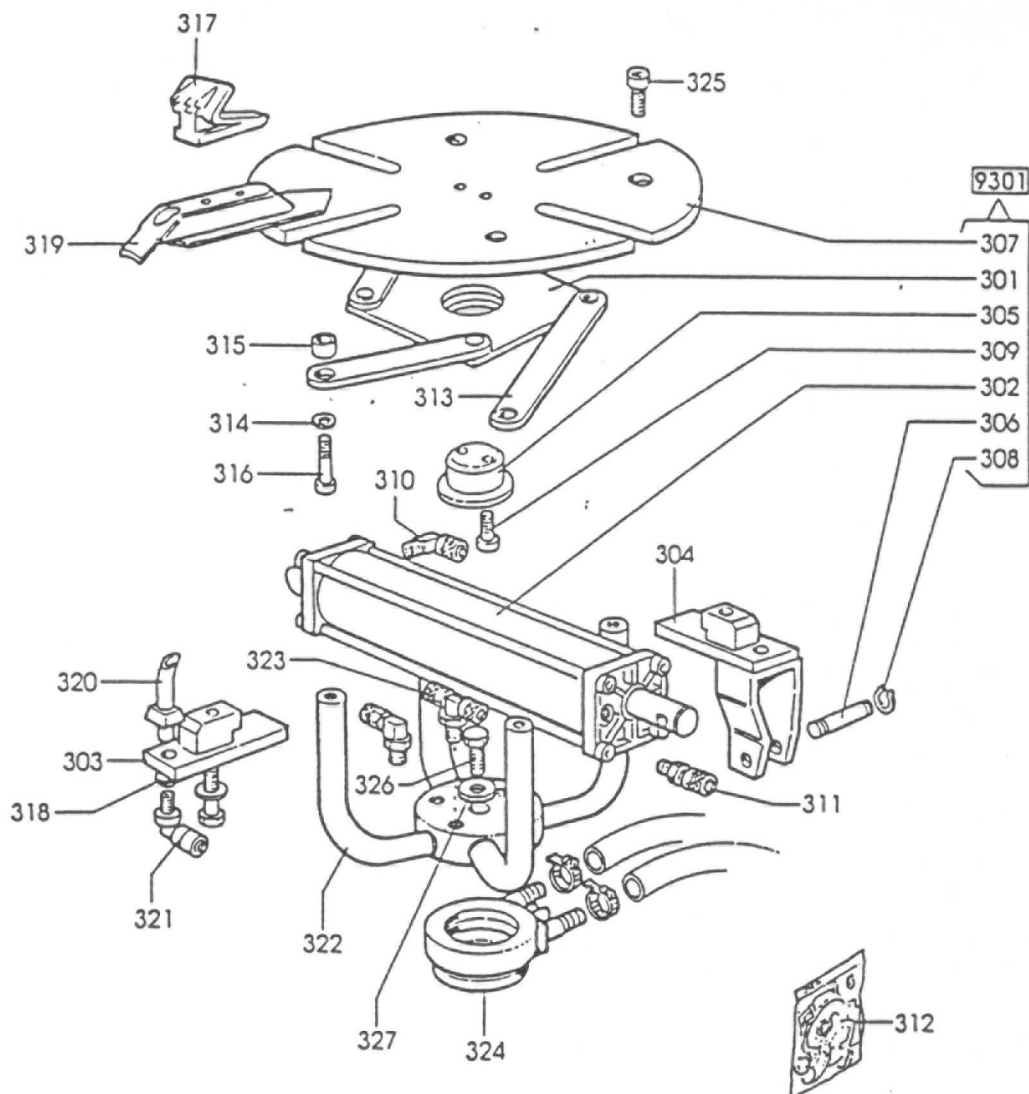
No.	Code	Description
1	436198	Rim support
2	439201	Front lid
3	422019	Mount/Demount foot
4	343996	Cup

No.	Code	Description
5	315522	Lube bucket support
6	344879	Support bracket
7	423405	Lube bucket



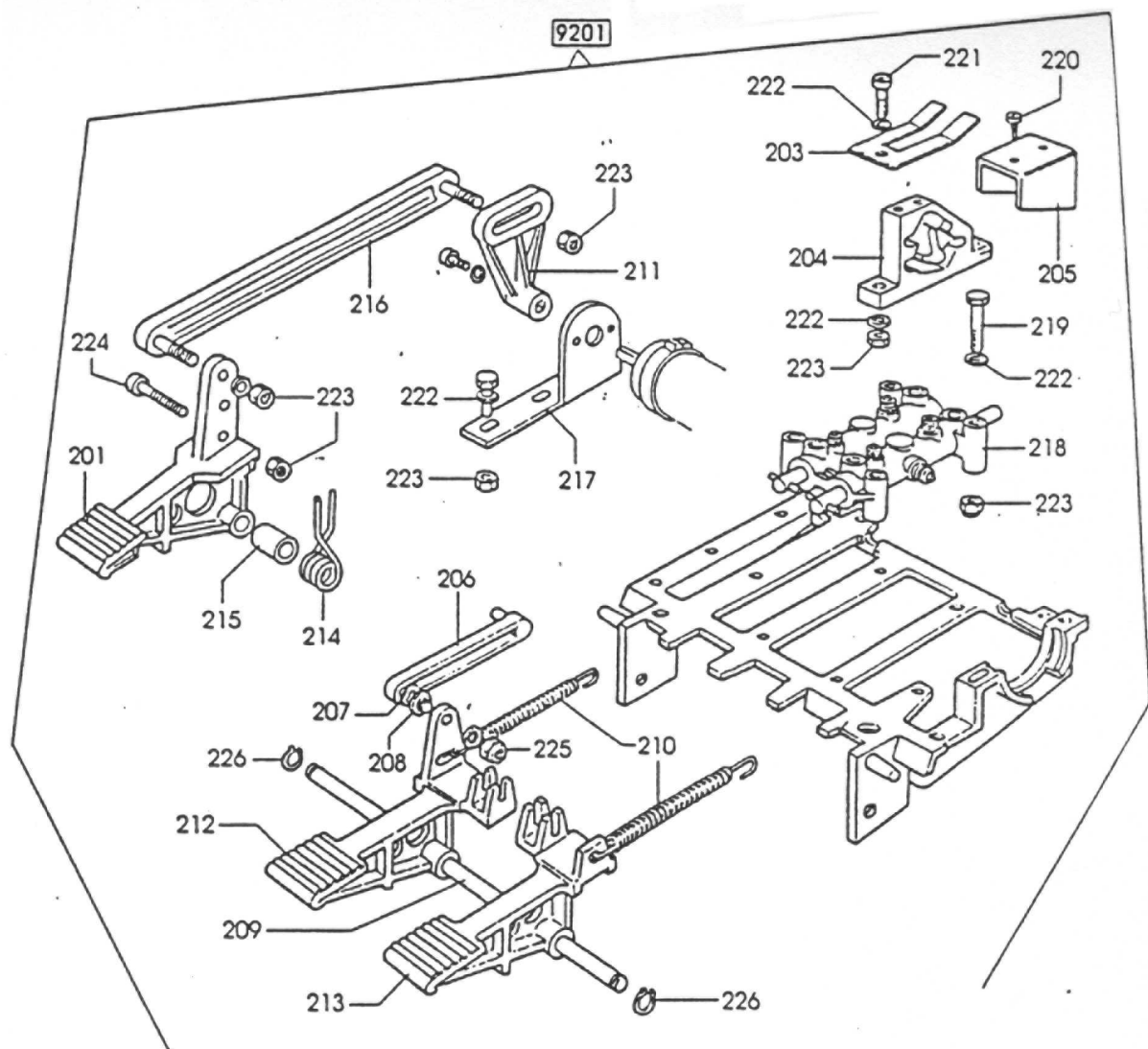
No.	Code	Description
103	440276	Adjustment knob with screw
104	423765	Vertical arm spring 48,4x410x3,2
105	440278	Vertical locking plate
106	440279	Locking arm
107	440280	Plate
108	440281	Locking arm plate
109	423907	Knob
110	417351	Handle
111	440284	Lock pawe
112	440285	Cover
113	428681	Ring

No.	Code	Description
114	440287	Arm rotation pin
115	226477	T.A. mount/demount head
116	424275	Steel washer Ø10,25x33x4
117	242827	Vertical arm + T.A. mount/dem. head
118	327729	Vertical arm
119	240275	Swing arm
120	322738	Roller for T.A. mount/demount head
9101	241608	Manometer assembly including:
121	434818	Manometer Ø40 12BAR-PSI 1/8"
122	435077	Valve
123	444514	Connection M/F 3/8" 2520



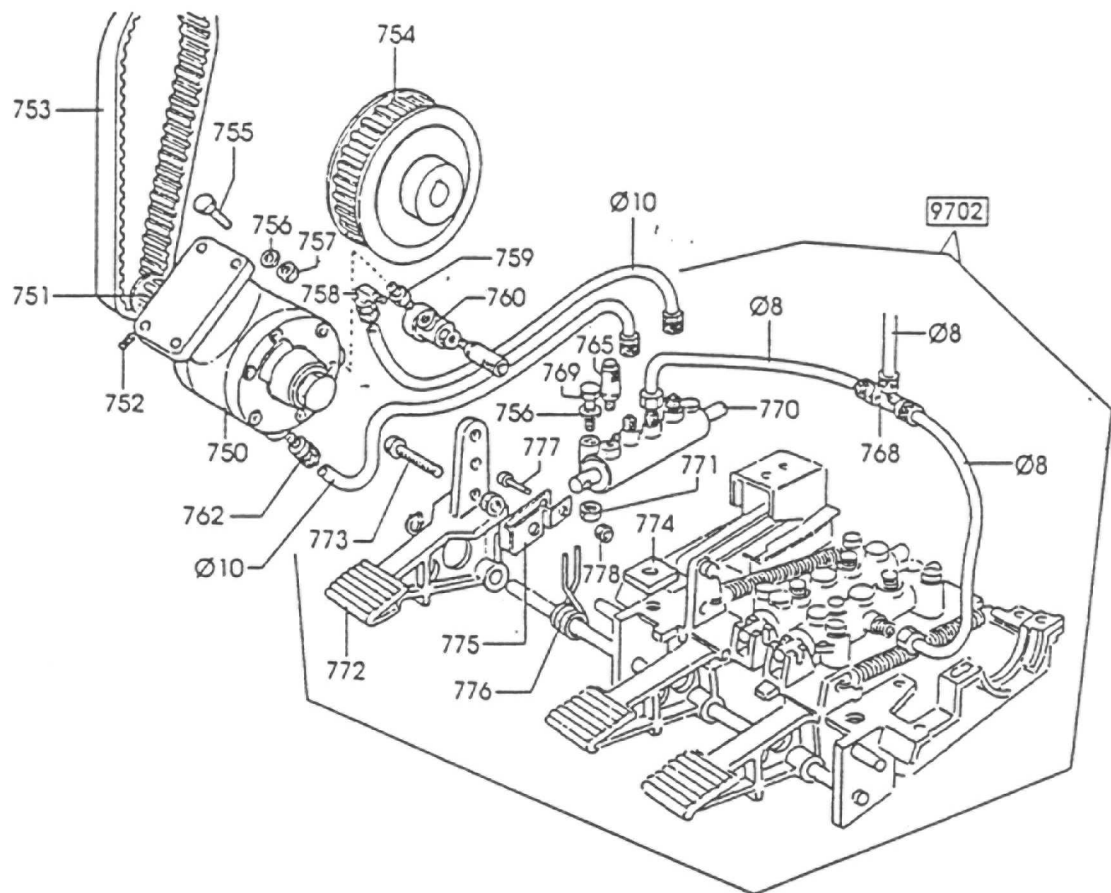
No.	Code	Description
9301	241164	Turntable assembly Including:
301	223793	Range
302	241119	Turntable cylinder
305	323792	Flange hub
306	339162	Pin (Ø12)
307	341106	Turntable
308	600025	Snap ring (7435 Ø12)
309	601281	Screw (5739 8G BR M8x14)
303	241510	Short sliding support
304	241171	Sliding support
310	414842	90° fitting (6/4-1/4")
311	417408	Fitting (6/4-1/8")
312	240122	Seal kit for Ø95 cylinder
313	223785	Connecting rod

No.	Code	Description
314	323795	Steel washer (Ø35x12.5x3)
315	323796	Bushing
316	338508	Screw (M12x73 10K)
317	340927	Chucking gripper (18")
318	341599	Washer (Ø16.25x20x2)
319	341600	Rubber bumper (18")
320	435285	Tubeless tyre inflation nozzle
321	441598	Fitting (6521 1/4 10)
322	242004	Turntable support
323	442008	T fitting (6410-103/8)
324	241987	Swivel fitting
325	600328	Screw (5931 8G BR M18x20)
326	601216	Screw (5740 10K BR M16x1.5x35)
327	330824	Washer (Ø16.5x42x10)



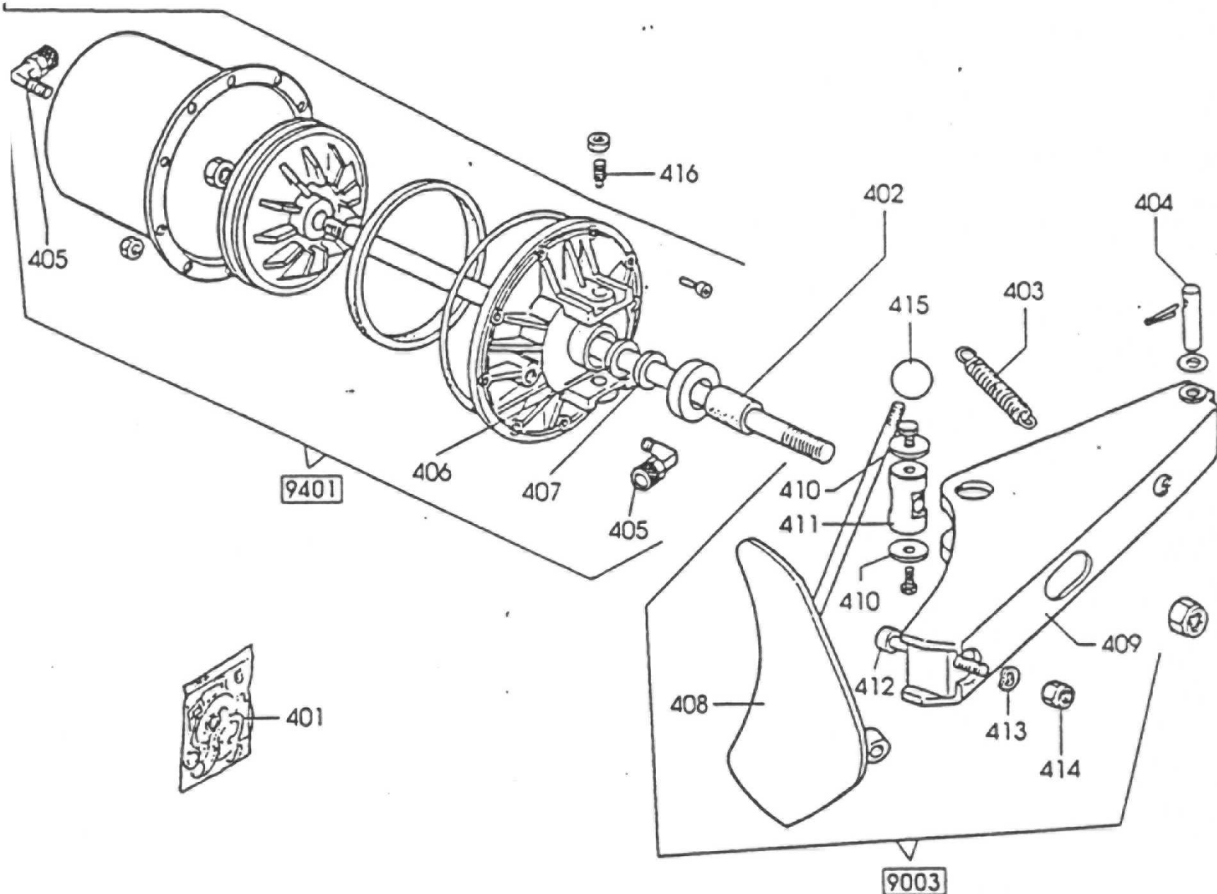
No.	Code	Description
9201	241201	Pedal assembly including:
201	325029	Reverser pedal
203	325019	Spring leaf
204	425020	Cam
205	325018	Bracket
206	425014	Connecting rod
207	419888	Washer Ø8.4x15
208	309358	Washer 8x16.5x0.5
209	325583	Pedal assembly pin
210	410628	Spring 14x94x2
211	404283	Switch arm
212	325031	Turntable pedal
213	325032	Bead-breaker pedal

No.	Code	Description
214	428682	Switch control lever
215	325050	Spacer
216	429009	Connecting rod
217	334758	Switch bracket
218	228473	Foot valve
219	600411	Screw (1/2 M6x50)
220	600641	Screw (Ø2.9x9.5)
221	600312	Screw (M6x25)
222	600211	Washer (6592 Ø6.4x12.5)
223	601022	Hex. nut M6
224	600366	Screw (M6x40)
225	601137	Hex. nut (M8)
226	600025	Snap ring (Ø12)



No.	Code	Description
Ø8	701683	Rilsan hose Ø8x1 (m.)
Ø10	701875	Rilsan hose Ø10x1 (m.)
9702	270526	Air pedal assembly including:
750	319135	Air motor
751	319076	Driving pulley
752	600801	Screw (M6x6)
753	425238	Toothed belt (240 L.100)
754	319073	Driven pulley
755	600363	Screw (M6x25)
756	600211	Washer (Ø6.4x12.5)
757	422288	Locknut (M6)
758	418350	90° fitting (10/8-1/8")
759	419142	Conical nipple (1/4")
760	419141	Exhaust valve

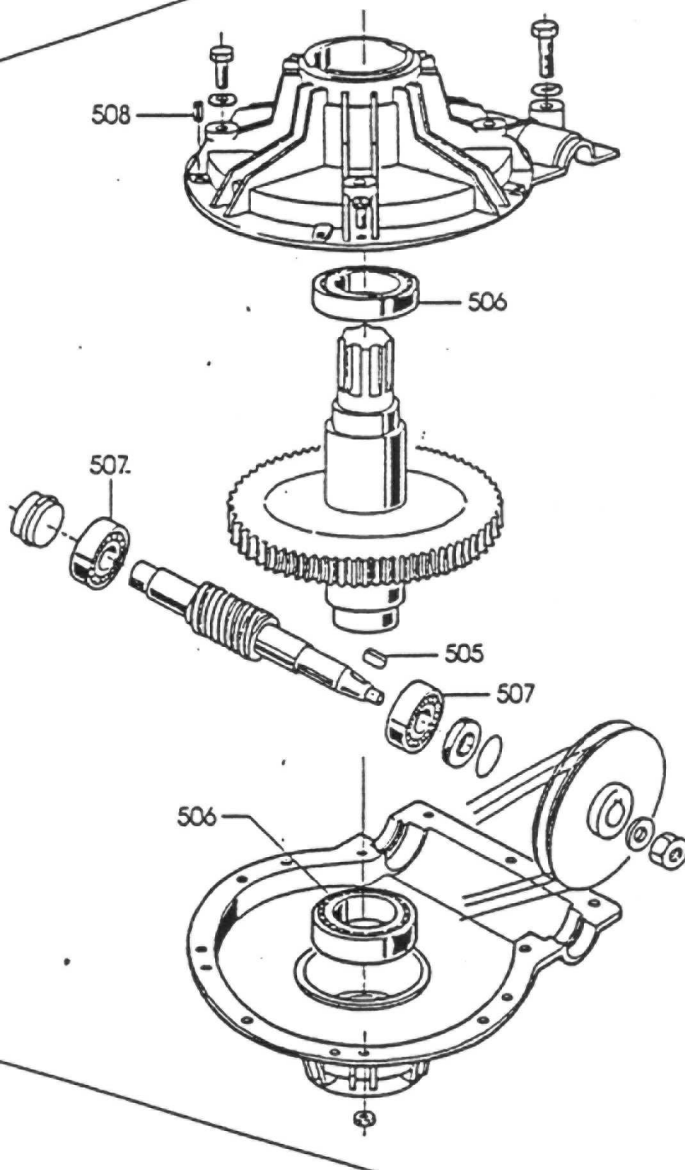
No.	Code	Description
762	419140	Fitting (M 10/8-1/4")
765	422682	Muffler (1/8")
768	415860	Three-way fitting
769	600411	Screw (M6x50)
770	229059	Air pedal assembly valve
771	601022	Hex. nut (M6)
772	229957	Air motor pedal
773	600366	Screw (M6x40)
774	329058	Reverser pedal stop plate
775	331381	Valve control connecting rod
776	428682	Switch control spring
777	600291	Screw (M4x20)
778	601018	Hex. nut (M4)



No.	Code	Description
401	238212	Seal kit for bead-breaking cylinder
402	424096	Bush
403	424364	Spring 23x67x3
404	323903	Bead-breaker arm fulcrum pin
9401	231706	Bead-breaking cylinder including:
405	418350	90° fitting
406	325561	Washer Ø24x29.8x0.5
407	434031	Ring

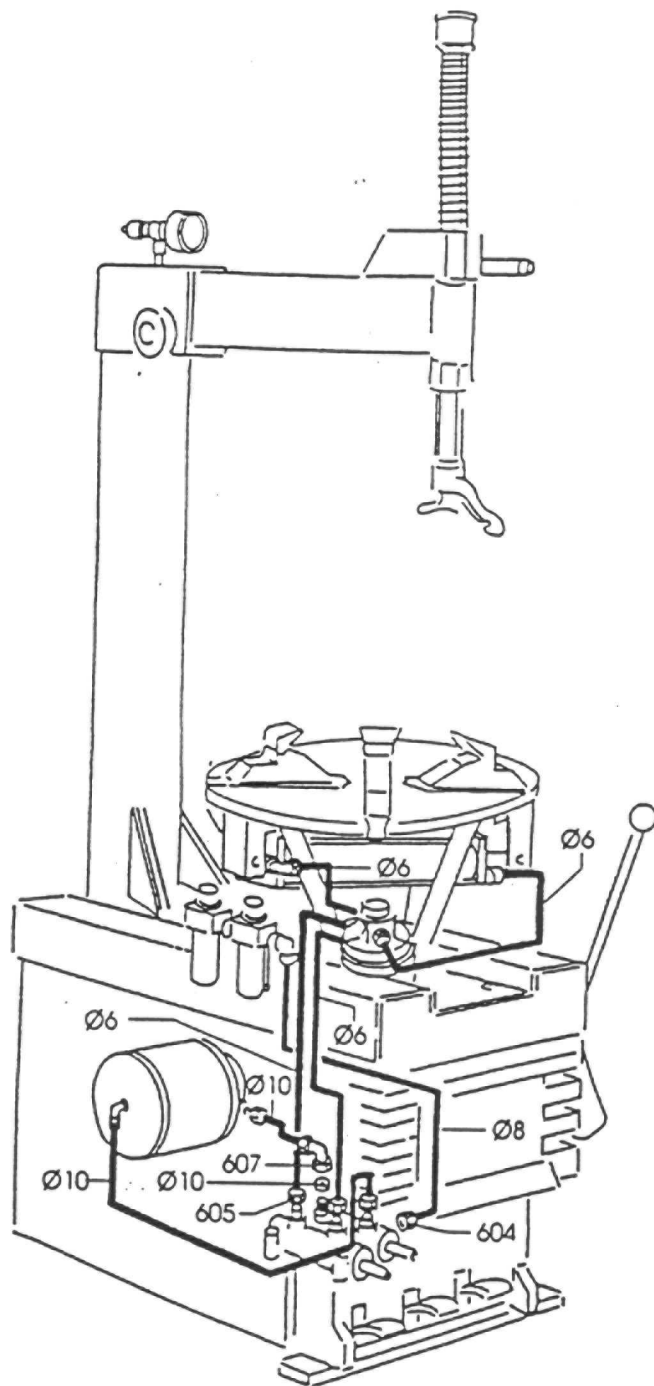
No.	Code	Description
9003	236565	Bead-breaker assembly blade including:
408	224000	Blade
409	224003	Bead-breaking assembly
410	323901	Washer Ø8.25x40x3
411	323902	Swivel pin
412	324008	Blade pin
413	409650	Split washer DIN 137/B Ø12
414	422255	Lock nut TRISTOP M12
415	402177	Handle
416	431864	Screw

9005



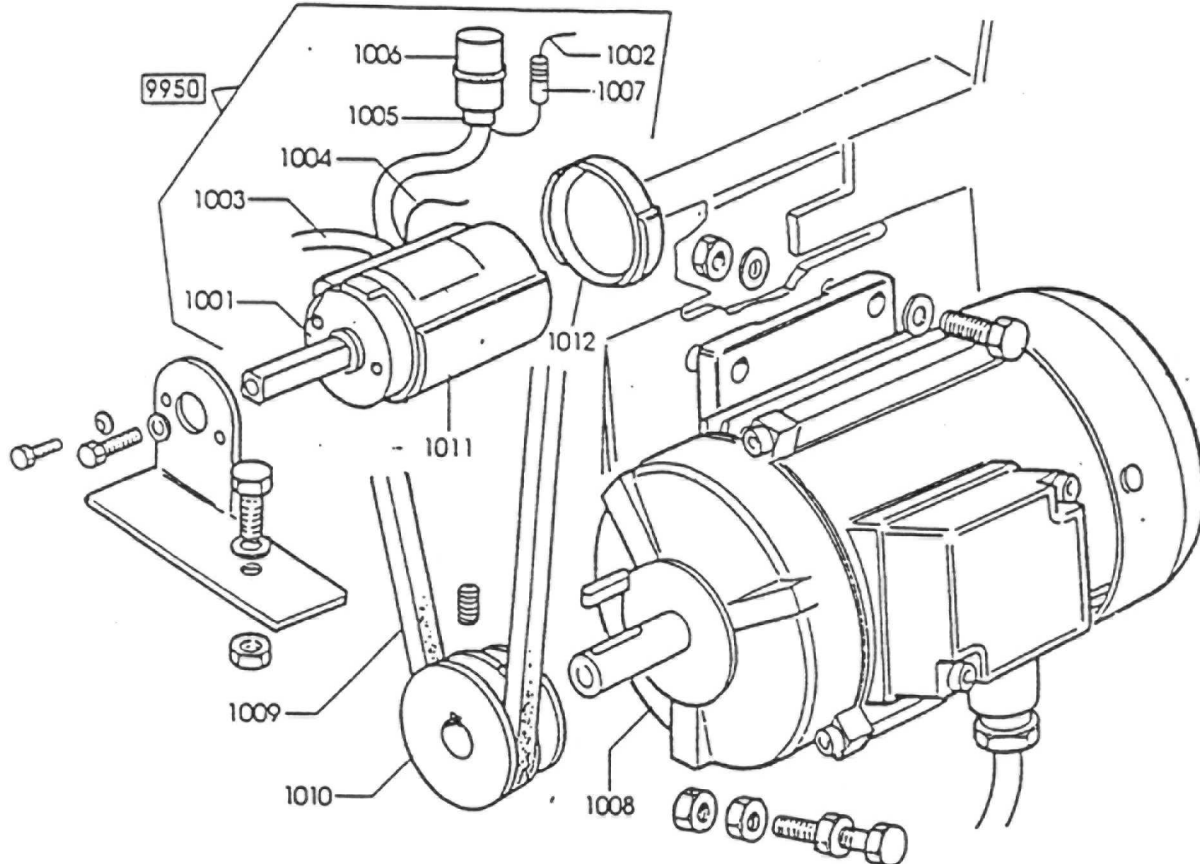
502

No.	Code	Description
502	238204	Gearbox seal kit
9005	237804	Gearbox including:
505	601950	Key 6604 A6x6x18
506	601220	Bearing 6010 50x80x16
507	601221	Taper roller bearing 30204 20x47x15.25
508	601280	Pin 6364 A8x20



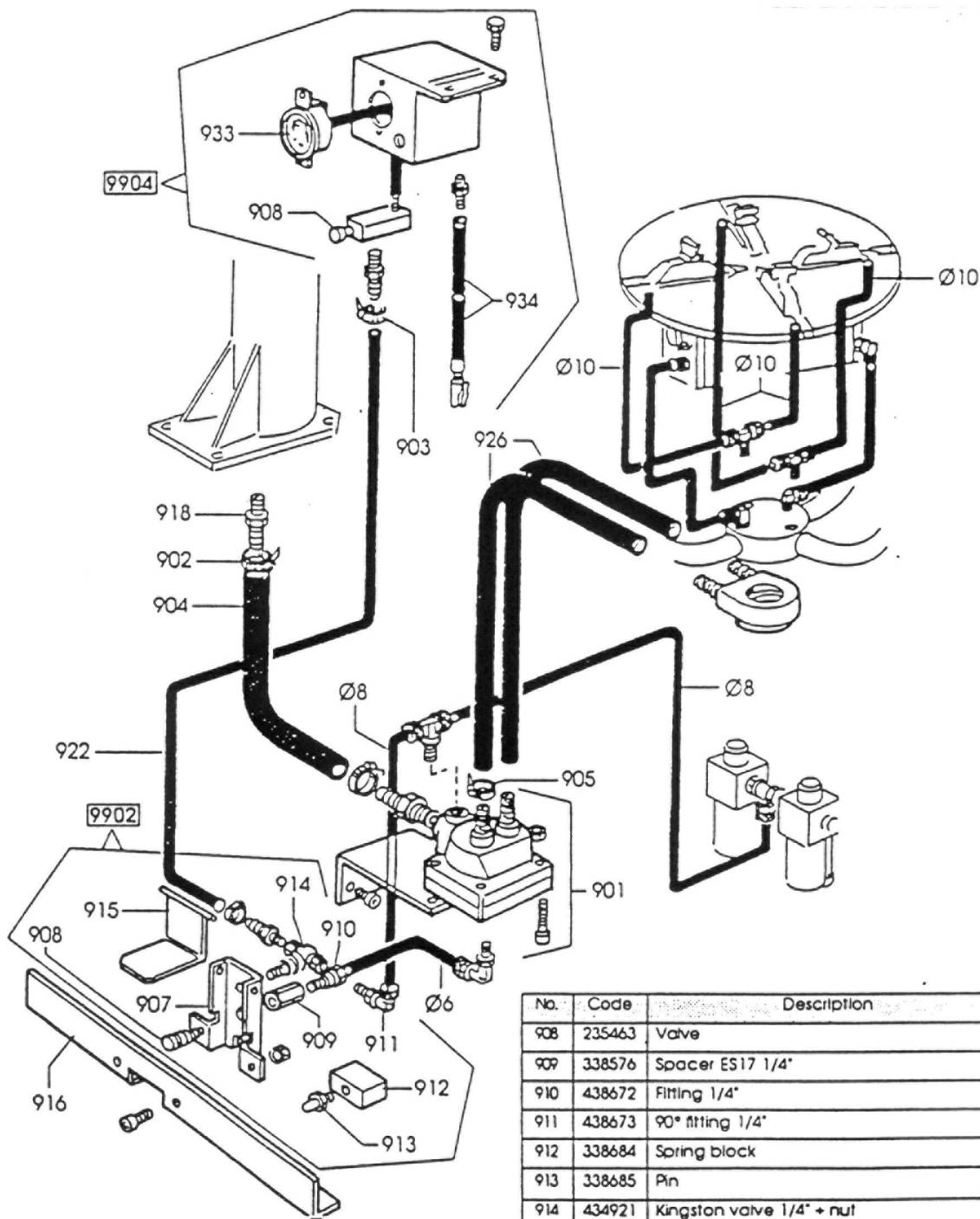
No.	Code	Description
Ø6	701684	Rilsan hose Ø6x1 (m.)
Ø8	701683	Rilsan hose Ø8x1 (m.)
Ø10	701875	Rilsan hose Ø10x1 (m.)

No.	Code	Description
604	316198	Hose ring nut Ø8
605	316199	Hose ring nut Ø6
607	339209	90° fitting M14x1 F



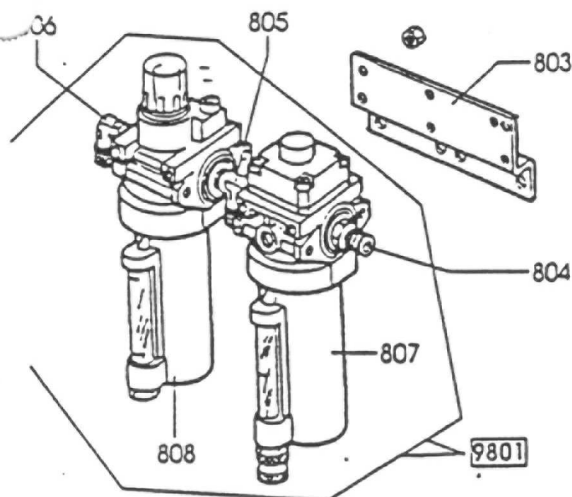
No.	Code	Description
9950	235572	110V Single Phase electric system Incl.:
1001	435363	Switch
1002	230709	Neoprene power network cord
1003	225419	Connecting cord
1004	225051	Ground wire connection
1005	430750	Condenser cap
1006	430713	Condenser 40MF 450VL
1007	430770	Resistance 330Kohm 1W
9950	235573	220V Single Phase electric system Incl.:
1001	421523	Switch
1002	235520	Connecting cord
1003	225419	Connecting cord
1004	225051	Ground wire connection
1005	414850	Condenser cap
1006	425504	Condenser 30MF
1007	417794	Resistance 330Kohm 1W

No.	Code	Description
9950	239202	3-Phase electric system Including:
1001	421523	Switch
1002	235518	Connecting cord
1003	239203	Connecting cord
1004	225051	Ground wire connection
1008	431740	220V Single Phase motor
	430666	115V Single Phase motor
	412959	380V 3-phase motor
	426793	440V 3-phase motor
1009	426352	V belt A25
1010	325274	Dual pulley
1011	432065	Switch guard
1012	430991	Switch guard lid

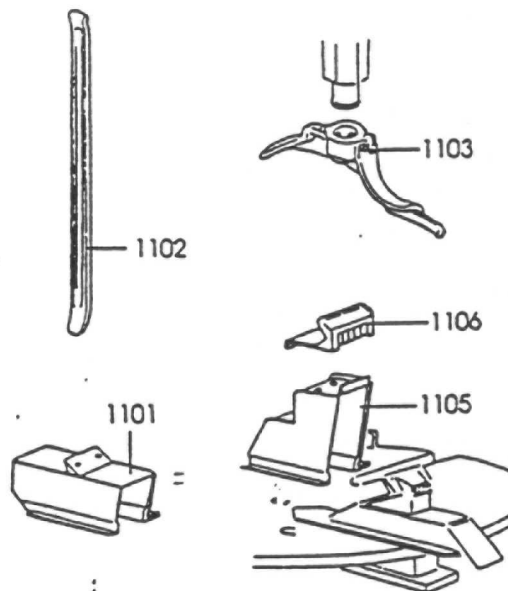
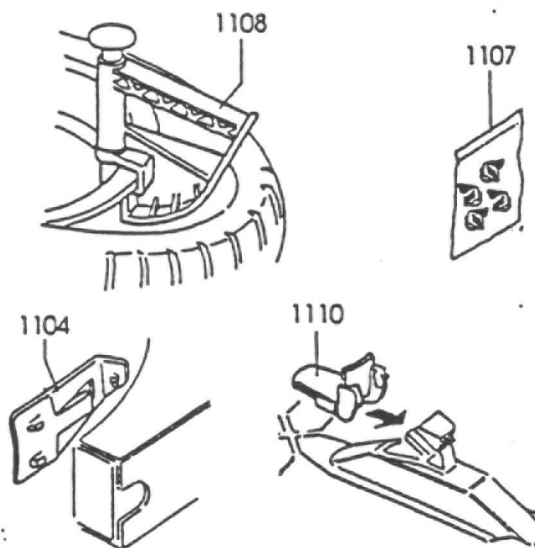


No.	Code	Description
Ø6	701684	Rilsan hose Ø6x1 (m.)
Ø8	701683	Rilsan hose Ø8x1 (m.)
Ø10	701875	Rilsan hose Ø10x1 (m.)
901	241124	KPM valve assembly
902	437720	Strap
903	403751	Strap
904	343626	Hose NL 18ATM 25x37 L.500
905	414509	Strap
9902	239003	Inflating assembly + pedal including:
907	334769	Valve support

No.	Code	Description
908	235463	Valve
909	338576	Spacer ES17 1/4"
910	438672	Fitting 1/4"
911	438673	90° fitting 1/4"
912	338684	Spring block
913	338685	Pin
914	434921	Kingston valve 1/4" + nut
915	238708	Pedal
916	341042	Pedal support
918	337704	Fitting
922	339425	Hose Ø16 ØE 14 L.1600
926	341156	Hose 16x23 L.685
9904	234176	BAR pressure gauge box including:
	236366	BAR-PSI pressure gauge box including:
908	235463	Valve
933	434175	BAR pressure gauge Ø80 1/4" Gas
	436364	BAR-PSI pressure gauge Ø80 1/4" Gas
934	235462	Inflating hose



No.	Code	Description
803	335695	Filter fixing bracket
804	418529	Fitting 1/4"-1/4"
805	433873	T fitting M 1/4"
806	438673	Fitting M 8/6"-1/4"
9801	438342	Filter + tube including:
807	439376	Filter cup
808	439377	Lubricator cup



No.	Code	Description
		Given as outfit:
1102	406591	Tyre lever
		Optional accessories:
1101	235745	8"-18" wheel adapter
1103	228563	Motorcycle mount/demount head

No.	Code	Description
1104	225640	Motorcycle tyre bead-breaker
1105	235225	15"-22" motorcycle wheel adapter
1106	435202	Motorcycle chucking gripper
1107	242613	Mount/demount head insert kit
1108	435685	Bead pressing pliers
1110	243268	Chucking gripper guard kit