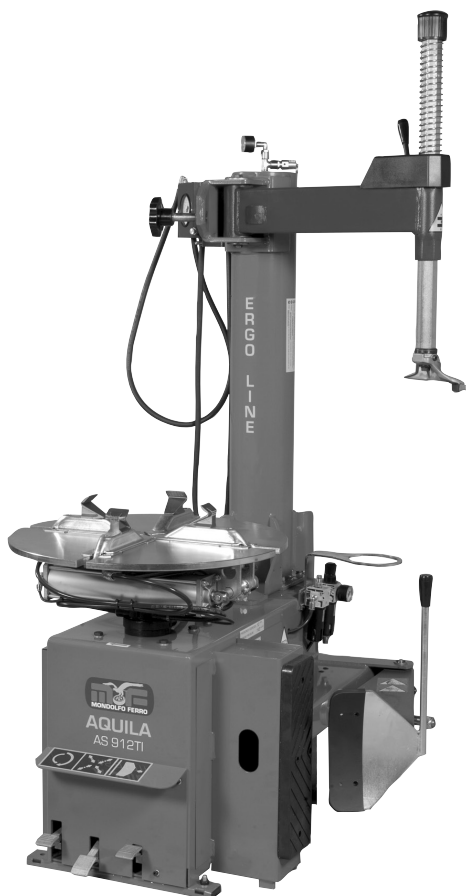


AS912 TI

Pezzi di ricambio / Spare parts list



Code: 4-103855E

Production date: 01 / 2019



info@mondolfoferro.it - www.mondolfoferro.it

I

Sul presente documento sono stati evidenziati con colore grigio i ricambi consigliati e indicati in grassetto i codici che sono variati rispetto a quelli riportati nella precedente versione del 04/16

EN

In this document, the recommended spare parts have been highlighted in gray, while in bold you find those codes which are different if compared with the previous version dated 04/16

DE

Im vorliegenden Dokument wurden die empfohlenen Ersatzteile in grauer Farbe hervorgehoben; die Teilenummern in Fettdruck haben sich bezugnehmend auf die vorherige Version vom 04/16 geändert.

FR

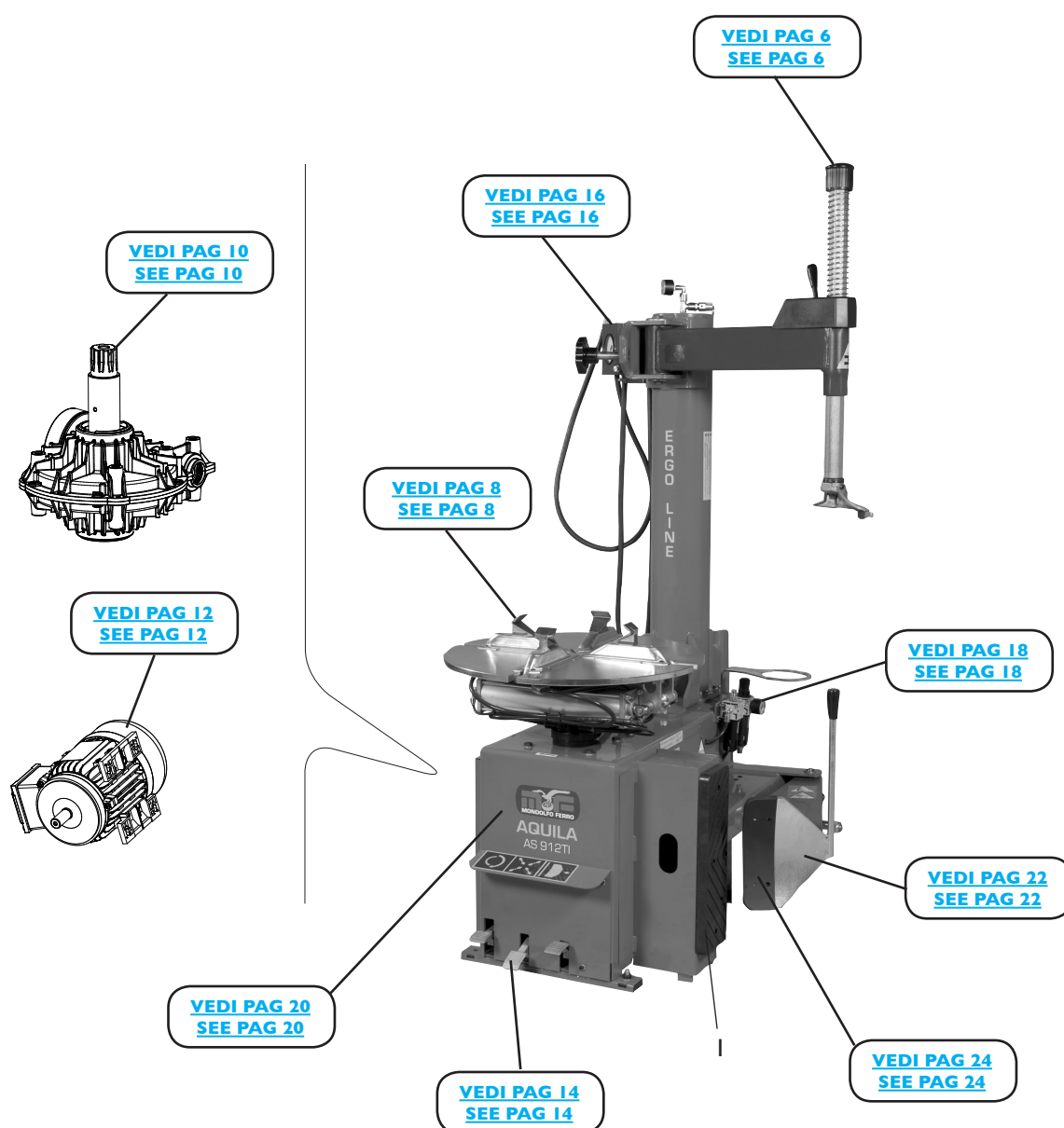
Dans ce document, les pièces de rechange préconisées sont soulignées en gris, tandis que les références différentes par rapport à la version précédente du 04/16 sont en gras

Sommario\Contents

| | |
|-----------------------------|----|
| COMPLESSIVO AS912 TI | |
| AS912 TI OVERALL..... | 4 |
| GRUPPO BRACCIO OPERANTE | |
| OPERATING ARM GROUP..... | 6 |
| GRUPPO AUTOCENTRANTE 10-20" | |
| TURNABLE GROUP 10-20"..... | 8 |
| GRUPPO RIDUTTORE | |
| GEARBOX GROUP..... | 10 |
| IMPIANTO ELETTRICO | |
| ELECTRICAL SYSTEM..... | 12 |
| GRUPPO PEDALIERA | |
| PEDAL GROUP..... | 14 |
| GRUPPO GONFIAGGIO T.I. | |
| T.I. INFLATION GROUP..... | 16 |
| GRUPPO FILTRO | |
| FILTER GROUP..... | 18 |
| GRUPPO CASSONE | |
| FRAME GROUP..... | 20 |
| GRUPPO STALLONATORE | |
| BEAD BREAKING GROUP..... | 22 |
| ACCESSORI | |
| ACCESSORIES..... | 24 |

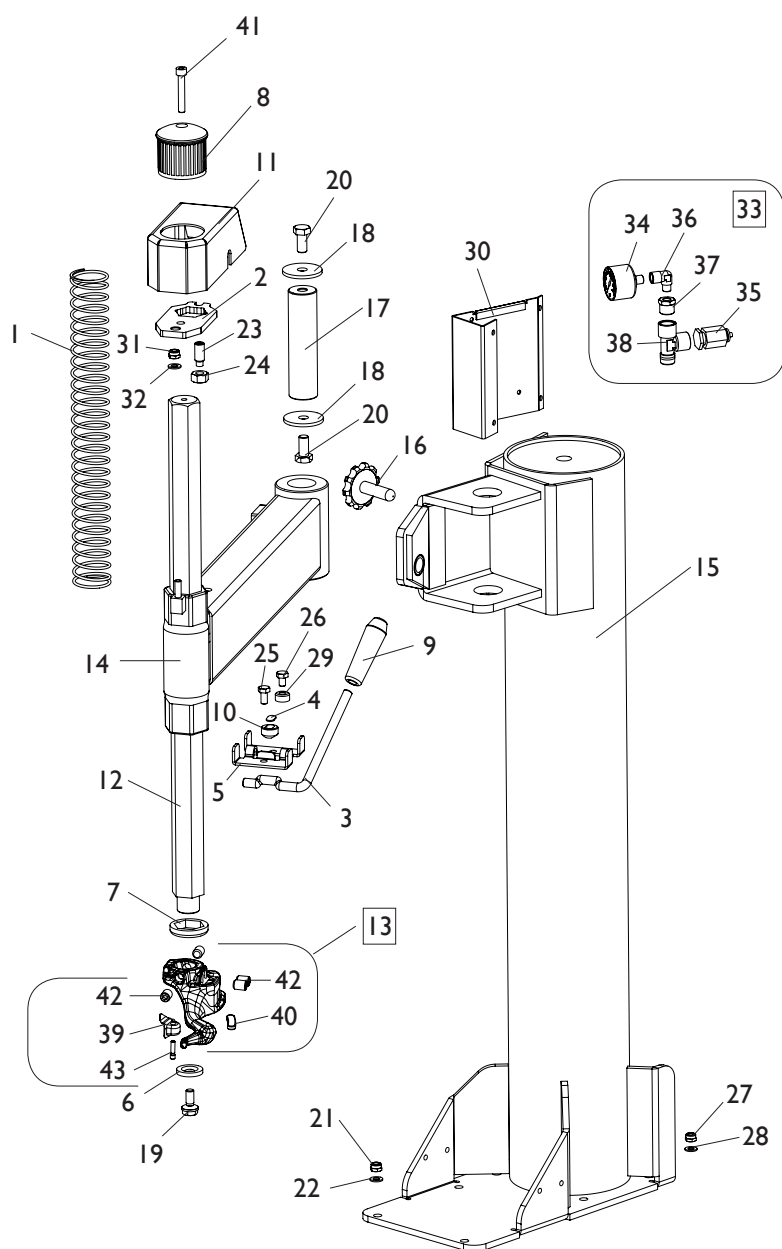
COMPLESSIVO AS912 TI

AS912 TI OVERALL



| Rif. Ref. | Codice Code | Descrizione | Description |
|--------------|----------------|------------------|-------------|
| I | 35016141 | APPOGGIO CERCHIO | RIM SUPPORT |

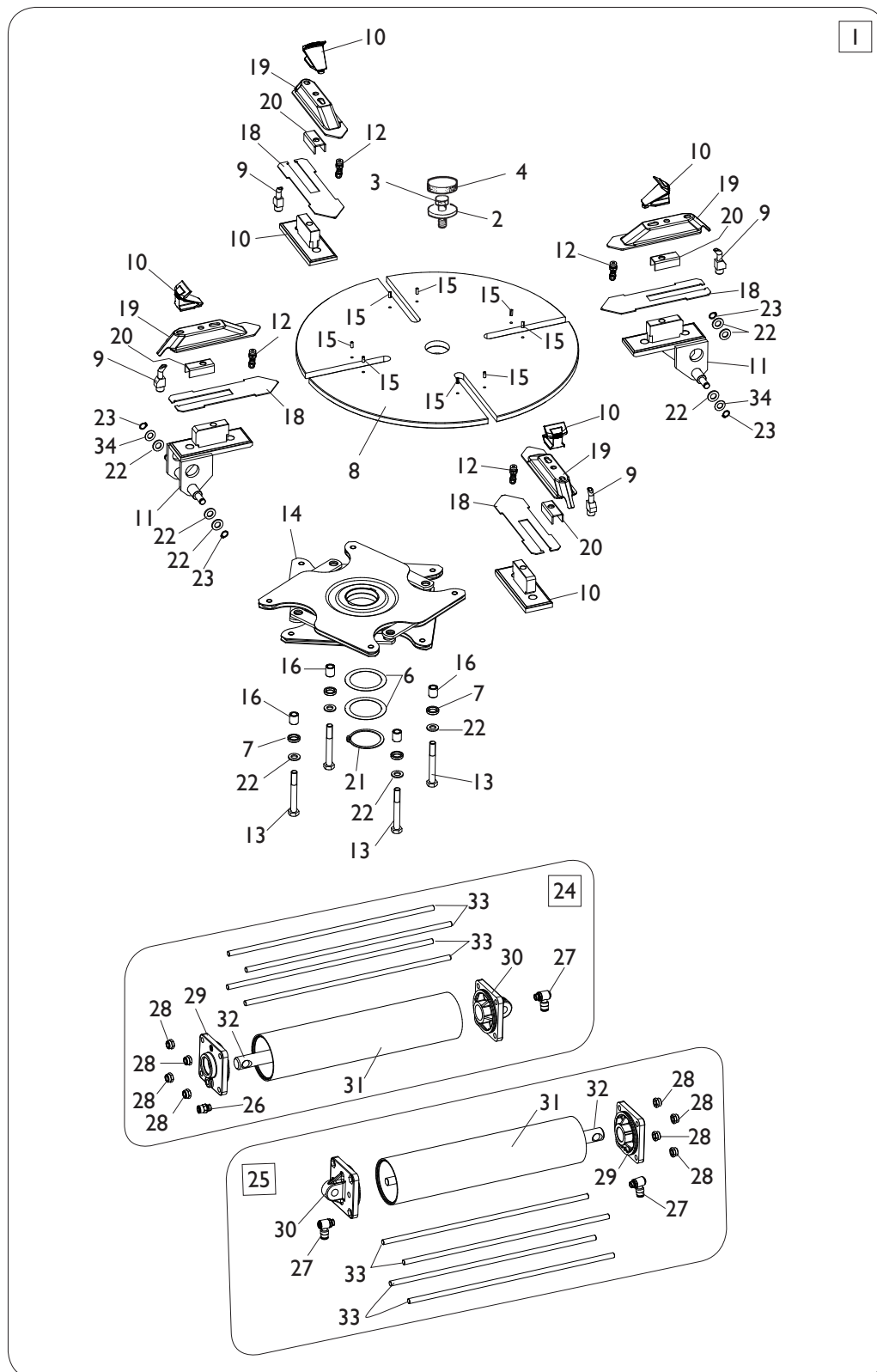
GRUPPO BRACCIO OPERANTE OPERATING ARM GROUP



[TORNA AL COMPLESSIVO](#)
[RETURNS TO OVERALL](#)

| Rif. Ref. | Codice Code | Descrizione | Description |
|--------------|----------------|------------------------------------|--------------------------------------|
| 1 | 423765 | MOLLA D.48,4X3,2X410 | SPRING D.48,4X3,2X410 |
| 2 | 4-117906 | PIASTRA BLOCCAGGIO VERTICALE | VERTICAL LOCKING PLATE |
| 3 | 440279 | LEVA CON ECCENTRICO | LEVER |
| 4 | 440280 | PIASTRINA PER NOTTOLINO | PLATE |
| 5 | 440281 | PIASTRINA ECCENTRICO A LEVA | ECCENTRIC PLATE |
| 6 | 350194 | RONDELLA D.12X33X5 | WASHER D.12X33X5 |
| 7 | 428681 | ANELLO AMMORTIZZATORE | DAMPING RING |
| 8 | 423907 | POMOLO | KNOB |
| 9 | 417351 | MANOPOLA | HANDLE |
| 10 | 440284 | NOTTOLINO DI PLOCCAGGIO | LOCKING |
| 11 | 440285 | CARTER PROTEZIONE | COVER |
| 12 | 343105 | BRACCIO VERTICALE | VERTICAL ARM |
| 13 | 5-104101 | TORRETTA COMPLETA | HEAD ASSEMBLY |
| 14 | 4-117931 | BRACCIO A BANDIERA | ORIZONTAL ARM |
| 15 | 5-101131 | PALO | ARM |
| 16 | 441580 | MANOPOLA M20X1,5 | HANDLE M20X1,5 |
| 17 | 323881 | PERNO BRACCIO | ARM PIN |
| 18 | 318216 | RONDELLA D.12,5X50X4 | WASHER D.12,5X50X4 |
| 19 | 350197 | VITE SPECIALE FISS.TORRETTA M10X20 | SPECIAL SCREW M10X20 |
| 20 | 2-01225 | VTE M12X25 | HEXAGON HEAD SCREW M12X25 |
| 21 | 2-01275 | DADO ES.N. M10 | NORMAL HEXAGON NUT M10 |
| 22 | 441631 | RONDELLA D.48X13X3 | WASHER D.48X13X3 |
| 23 | 2-71370 | VSTEI M12X30 | CSK SCREW SOCKET M12X30 |
| 24 | 2-00153 | DADO ES. M12 | HEXAGON NUT M12 |
| 25 | 2-00373 | VTE M8X20 | HEXAGON HEAD SCREW M8X20 |
| 26 | 2-00372 | VTE M8X16 | HEXAGON HEAD SCREW M8X16 |
| 27 | 2-01019 | DADO ES.A. M10 | AUTOLOCKING HEXAGON NUT M10 |
| 28 | 2-00213 | RONDELLA D.10 | WASHER D.10 |
| 29 | 442635 | DISTANZIALE PIASTRA | SPACER |
| 30 | 338808 | SUPPORTO SCATOLA GONFIAGGIO | INFLATION BOX SUPPORT |
| 31 | 2-01137 | DADO ES.A. M8 | AUTOLOCKING HEXAGON NUT M8 |
| 32 | 2-00212 | RONDELLA D.8 | WASHER D.8 |
| 33 | 241608 | GRUPPO MANOMETRO | GAUGE ASSEMBLY |
| 34 | 3-00488 | MANOMETRO D.40 1/8 0-12 BAR/PSI | PRESSURE GAUGE D.40 1/8 0-12 BAR/PSI |
| 35 | 3-00356 | LIMITATORE DI PRESSIONE | VALVE |
| 36 | 3-00138 | RACCPN-L G1/8 | L-FITTING G1/8 |
| 37 | 3-00271 | RACCPN-G3/8-1/8F | FITTING G3/8-1/8F |
| 38 | 3-00131 | RACCPN-TL-G3/8CG-FF | TL-FITTING G3/8CG-FF |
| 39 | 442019 | INSERTO NERO | BLACK INSERT |
| 40 | 456533 | INSERTO NERO | BLACK INSERT |
| 41 | 2-00901 | VTCEI 1/2F M8X50 | HEX. SOCKET HEAD SCREW 1/2F M8X50 |
| 42 | 2-71357 | VSTEI M12X16 | SCREW M12X16 |
| 43 | 342051 | PERNO TORRETTA | PIN |

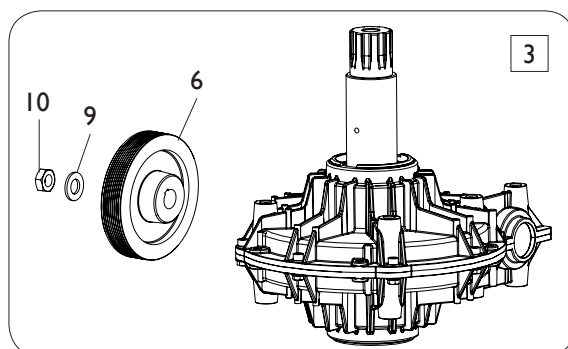
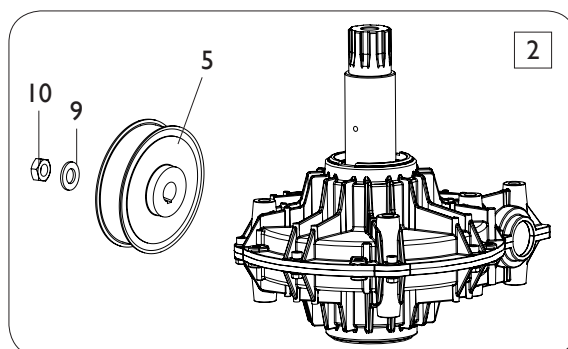
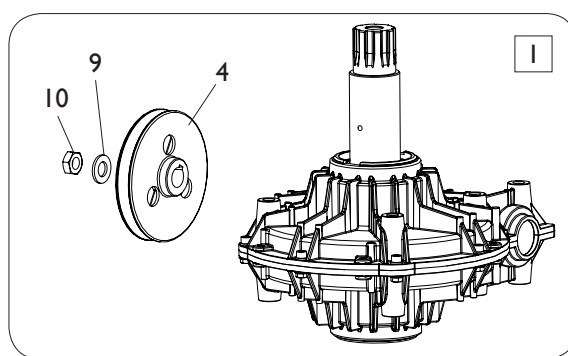
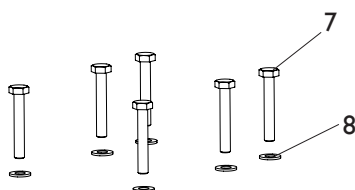
GRUPPO AUTOCENTRANTE 10-20" TURNTABLE GROUP 10-20"



[TORNA AL COMPLESSIVO](#)
[RETURNS TO OVERALL](#)

| Rif. Ref. | Codice Code | Descrizione | Description |
|--------------|-----------------|---|---|
| 1 | 5-100385 | GRUPPO AUTOCENTRANTE 10-20" | TURNTABLE ASSEMBLY 10-20" |
| 2 | 323363 | RONDELLA D.16,5X48X10 | WASHER D.16,5X48X10 |
| 3 | 2-01216 | VTE M16X1,5X35 | HEXAGON HEAD SCREW M16X1,5X35 |
| 4 | 426514 | TAPPO TONDO | ROUND CAP |
| 5 | 238548 | KIT GUARNIZIONI CILINDRI | CYLINDERS SEAL KIT |
| 6 | 455082 | RONDELLA D.65X85X0,4 | WASHER D.65X85X0,4 |
| 7 | 437964 | RONDELLA D.18,5X25X5 | WASHER D.18,5X25X5 |
| 8 | 253758 | PIATTO AUTOCENTRANTE | TURNTABLE PLATE |
| 9 | 4-101918 | UGELLO GONFIATUBLESS | FITTING |
| 10 | 4-101122 | APP. SCORREVOLE TRAINATO T.I. | RIM SUPPORT T.I. |
| 11 | 4-101130 | APP. SCORREVOLE TRAINANTE T.I. | RIM SUPPORT T.I. |
| 12 | 3-00517 | RACCPN-LO-G1/4GO-T.10 | LO-FITTING-G1/4GO-T.10 |
| 13 | 2-03295 | VTE 1/2F M12X95 | HEXAGON HEAD SCREW 1/2F M12X95 |
| 14 | 4-101651 | FLANGIA COMANDO BIELLE | FLANGE CONTROL RODS |
| 15 | 2-01059 | SPINA D.5X12 | PLUG D.5X12 |
| 16 | 337965 | BOCCOLA D.12X18X20 | BUSHING D.12X18X20 |
| 17 | 3008225 | GRIFFA BLOCCAGGIO | WEDGE |
| 18 | 4-101151 | SLITTA COPRIASOLA | PLATE |
| 19 | 4-101871 | SCORREVOLE T.I. (FINO A 12/2018) | SLIDER T.I. (UP TO 12/2018) |
| 19 | 4-121596 | SCORREVOLE UNIVERS. (DA 01/2019) | UNIVERSAL SLIDER (SINCE 01/2019) |
| 20 | 4-101812 | LAMIERA | PLATE |
| 21 | 2-01283 | ANELLO D.65 | SEEGER D.65 |
| 22 | 2-00214 | RONDELLA D.12 | WASHER D.12 |
| 23 | 2-00025 | SEEGER D.12 | SEEGER D.12 |
| 24 | 253784 | CILINDRO DX D.70X304,5 | RIGHT CYLINDER D.70X304,5 |
| 25 | 253783 | CILINDRO SX D.70X304,5 | LEFT CYLINDER D.70X304,5 |
| 26 | 3-02045 | RACCPN-D- G1/8 T6 + O-RING | D-FITTING G1/8 WITH O-RING |
| 27 | 3-02044 | RACCPN-LO- G1/8 T6 + O-RING | LO-FITTING G1/8 WITH O-RING |
| 28 | 2-01137 | DADO ES.A. M8 | AUTOLOCKING HEXAGON NUT M8 |
| 29 | 5-105111 | FLANGIA ANTERIORE D.70 | FRONT FLANGE D.70 |
| 30 | 4-115948 | FLANGIA POSTERIORE D.70 | REAR FLANGE D.70 |
| 31 | 4-115951 | CAMICIA D.70X338,5 | LINER D.70X338,5 |
| 32 | 4-115950 | STELO D.20X386 | STEM D.20X386 |
| 33 | 4-115949 | TIRANTE D.7X368 M8 | TIE ROD D.7X368 M8 |
| 34 | 428636 | RONDELLA D.12,3X22,8X1 | WASHER D.12,3X22,8X1 |

GRUPPO RIDUTTORE GEARBOX GROUP

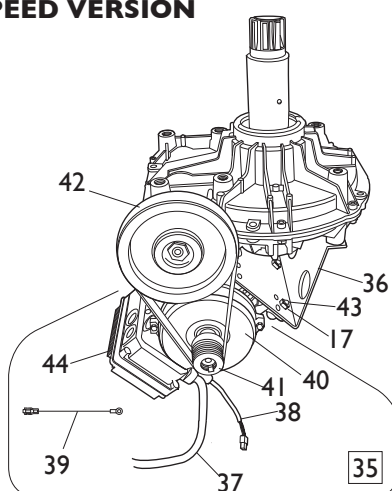


[TORNA AL COMPLESSIVO](#)
[RETURNS TO OVERALL](#)

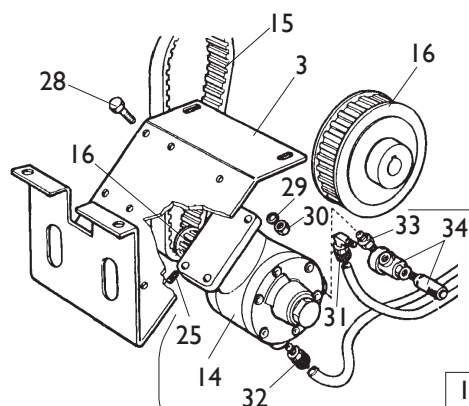
| Rif. Ref. | Codice Code | Descrizione | Description |
|--------------|----------------|-----------------------------|---------------------------|
| 1 | 5-102650 | RIDUTTORE I VELOCITA | GEARBOX I SPEED |
| 2 | 5-102651 | RIDUTTORE PNEUMATICO | GEARBOX PNEUMATIC |
| 3 | 5-101783 | RIDUTTORE 12V | GEARBOX 2 SPEED |
| 4 | 314344 | PULEGGIA I VELOCITA | PULLEY I SPEED |
| 5 | 319073 | PULEGGIA PNEUMATICA | PULLEY PNEUMATIC |
| 6 | 339870 | PULEGGIA 2V | PULLEY 2 SPEED |
| 7 | 2-01046 | VTE M10X55 | HEXAGON HEAD SCREW M10X55 |
| 8 | 2-00213 | RONDELLA D.10 | WASHER D.10 |
| 9 | 2-00215 | RONDELLA D.14 | WASHER D.14 |
| 10 | 2-00941 | DADO ES. M14 | HEXAGON NUT M14 |

IMPIANTO ELETTRICO ELECTRICAL SYSTEM

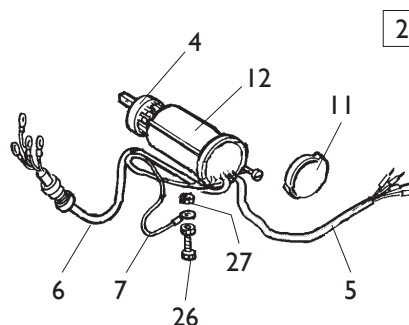
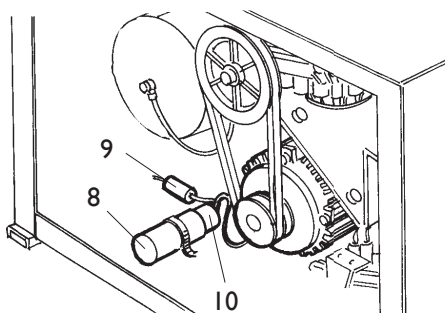
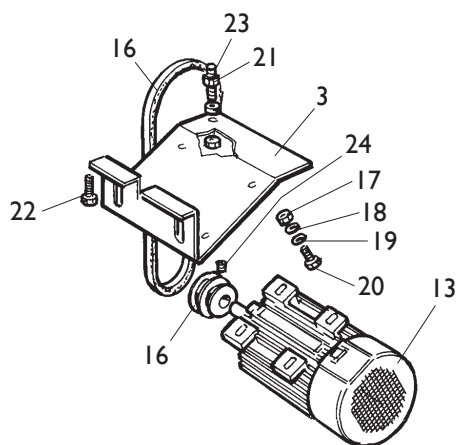
VERSIONE DV 2 SPEED VERSION



VERSIONE PNEUMATICA PNEUMATIC VERSION



VERSIONE 3ph / 1ph 3ph / 1ph VERSION

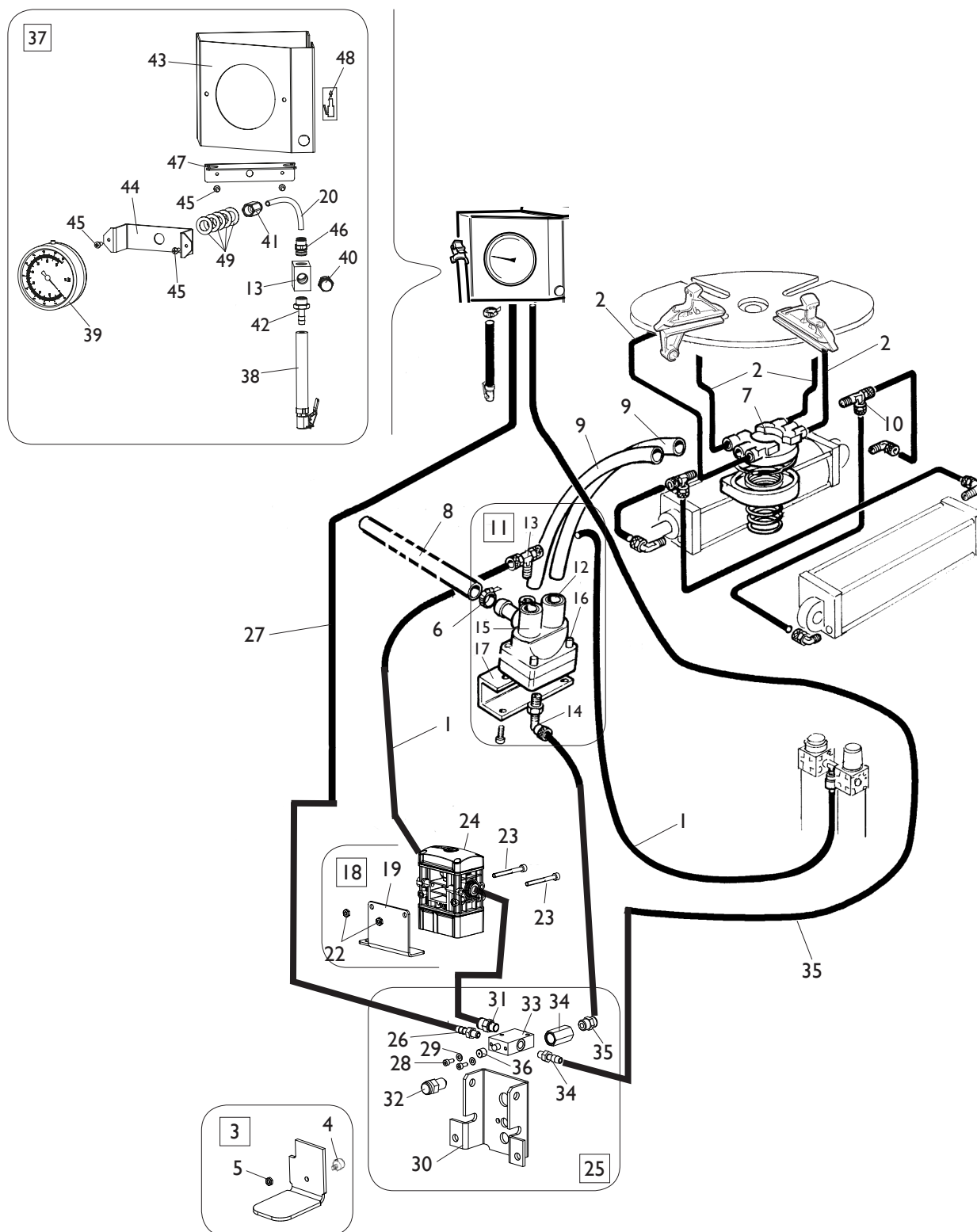


[TORNA AL COMPLESSIVO](#)
[RETURNS TO OVERALL](#)

| Rif. Ref. | Codice Code | Descrizione | Description |
|--------------|----------------|---|---|
| 1 | 236726 | MOTORE PNEUMATICO CON PULEGGIA | PNEUMATIC MOTOR ASSEMBLY |
| 2 | 5-103989 | IMPIANTO ELETTRICO 115V 1ph | ELECTRICAL SYSTEM 115V 1ph |
| 2 | 235574 | IMPIANTO ELETTRICO 400/230V 3ph | ELECTRICAL SYSTEM 400/230V 3ph |
| 3 | 334768 | CULLA MOTORE | MOTOR SUPPORT |
| 4 | 5-102742 | INVERTITORE | INVERTER |
| 5 | 447801 | CAVO RETE 115V 1ph | SUPPLY CABLE 115V 1ph |
| 5 | 235518 | CAVO RETE 400/230V 3ph | SUPPLY CABLE 440/230V 3ph |
| 6 | 249590 | CAVO MOTORE 115V 1ph | MOTOR CABLE 115V 1ph |
| 6 | 225390 | CAVO MOTORE 400/230V 3ph | MOTOR CABLE 400/230V 3ph |
| 7 | 249601 | CAVO DI MASSA L.350mm 115V 1ph | U-BOLT L.350mm 115V 1ph |
| 7 | 225051 | CAVO DI MASSA L.350mm 400/230V 3ph | U-BOLT L.350mm 400/230V 3ph |
| 8 | 430750 | CAPPELOTTO D.45 115V 1ph | CAP NUT 115V 1ph |
| 8 | 414850 | CAPPELOTTO 230V 1ph | CAP NUT 230V 1ph |
| 9 | 430770 | RESISTENZA 330K OHM | RESISTANCE 330K OHM |
| 10 | 4-112706 | CONDENSATORE 50mf 115V 1ph | CAPACITOR 50mf 115V 1ph |
| 10 | 449750 | CONDENSATORE 35mf 230V 1ph | CAPACITOR 35mf 230V 1ph |
| 11 | 430991 | COPERCHIO PROTEZIONE | LID |
| 12 | 432065 | PROTEZIONE INVERTITORE | INVERTER COVER |
| 13 | 422013 | MOTORE 400/230V 3ph | MOTOR 400/230V 3ph |
| 13 | 4-112454 | MOTORE 115V 1ph | MOTOR 115V 1ph |
| 14 | 319135 | MOTORE PNEUMATICO | PNEUMATIC MOTOR |
| 15 | 3-00555 | CINGHIA MOTORE 3ph / 1ph | MOTOR BELT 3ph / 1ph |
| 15 | 3-00585 | CINGHIA MOTORE PNEUMATICO | BELT FOR PNEUMATIC MOTOR |
| 16 | 331067 | PULEGGIA MOTORE 3ph / 1ph | MOTOR PULLEY 3ph / 1ph |
| 16 | 319076 | PULEGGIA MOTORE PNEUMATICO | PULLEY FOR PNEUMATIC MOTOR |
| 17 | 421349 | DADO ES.A. M8 | AUTOLOCKING HEXAGON NUT M8 |
| 18 | 339208 | RONDELLA D.8,5X22X4 | WASHER D.8,5X22X4 |
| 19 | 2-00212 | RONDELLA D.8 | WASHER D.8 |
| 20 | 2-00374 | VTE M8X25 | HEXAGON HEAD SCREW M8X25 |
| 21 | 2-00152 | DADO ES. M10 | HEXAGON NUT M10 |
| 22 | 2-00328 | VTCEI M10X20 | HEXAGON SOCKET HEAD SCREW M10X20 |
| 23 | 455920 | VSTEI SPECIALE M10X60 | SPECIAL SCREW M10X60 |
| 24 | 2-01091 | VSTEI M6X5 | CSK SCREW SOCKET M6X5 |
| 25 | 2-00801 | VSTEI M6X6 | CSK SCREW SOCKET M6X6 |
| 26 | 2-00605 | VITE M4X10 | SCREW M4X10 |
| 27 | 2-00143 | DADO ES. M4 | HEXAGON NUT M4 |
| 28 | 2-00363 | VTE M6X25 | HEXAGON HEAD SCREW M6X25 |
| 29 | 2-00211 | RONDELLA D.6 | WASHER D.6 |
| 30 | 422288 | DADO ES.A. M6 | AUTOLOCKING HEXAGON NUT M6 |
| 31 | 3-00109 | RACCPN-L G1/8C T10/8 | L-FITTING G1/8C T10/8 |
| 32 | 3-00040 | RACCPN-D G1/4C T10/8 | D-FITTING G1/4C T10/8 |
| 33 | 3-00141 | NIPPLO G1/4C | NIPPLES G1/4C |
| 34 | 3-00316 | VALVOLA G1/8 | VALVE G1/8 |
| 35 | 5-104995 | MOTOINV. DV 115V/1/50-60HZ | MOTOINV. 2 SPEED 115V/1/50-60HZ |
| 36 | 4-109965 | CULLA MOTOINVERTER DV | MOTOINVERTER SUPPORT |
| 37 | 4-111586 | CAVO RETE MOTOINVERTER | MOTOINVERTER SUPPLY CABLE |
| 38 | 4-109895 | CAVO COMANDI MOTOINVERTER | MOTOINVERTER COMMAND CABLE |
| 39 | 4-101659 | CAVO DI MASSA L.400mm Mi | MOTOINVERTER U-BOLT L.400mm |
| 40 | 4-113412 | MOTOINVERTER (NO SK) 230/115V | MOTOINV. (NO P.C. BOARD) 230/115V |
| 41 | 4-102397 | PULEGGIA MOTOINVERTER | MOTOINVERTER PULLEY |
| 42 | 3-00573 | CINGHIA MOTOINVERTER | MOTOINVERTER BELT |
| 43 | 2-00375 | VTE M8X30 | HEXAGON HEAD SCREW M8X30 |
| 44 | 4-113414 | SK MOTOINVERTER 115V | MOTOINVERTER P.C. BOARD 115V |

| Rif. Ref. | Codice Code | Descrizione | Description |
|--------------|-----------------|------------------------------|---------------------------------|
| 1 | 5-106269 | PEDALIERA 1 VELOCITA | PEDAL ASSEMBLY 1 SPEED |
| 2 | 270526 | PEDALIERA PNEUMATICA | PEDAL ASSEMBLY PNEUMATIC |
| 3 | 3-00183 | SILENZIATORE IN PLASTICA 1/8 | PLASTIC SILENCER 1/8 |
| 4 | 325019 | BALESTRA A FORCELLA | LEAF SPRING |
| 5 | 425020 | CAMMA DOPPIA | DOUBLE CAM |
| 6 | 325018 | CAVALLOTTO GUIDA BIELLE | U-BOLT |
| 7 | 425014 | BIELLA CAMMA | CAM ROD |
| 8 | 2-02247 | RONDELLA D.8,4X15 | WASHER D.8,4X15 |
| 9 | 309358 | RONDELLA D.8X16,5X0,5 | WASHER D.8X16,5X0,5 |
| 10 | 325583 | PERNO PEDALIERA | PEDAL PIN |
| 11 | 410628 | MOLLA D.14X2X105 | SPRING D.14X2X105 |
| 12 | 325031 | PEDALE AUTOCENTRANTE | TURNTABLE PEDAL |
| 13 | 325032 | PEDALE STALLONATORE | BEAD BRAKE PEDAL |
| 14 | 325050 | DISTANZIALE | SPACER |
| 15 | 5-102714 | PEDALE INVERTITORE | INVERTER PEDAL |
| 16 | 429009 | BIELLA | ROD |
| 17 | 404283 | LEVA INVERTITORE | INVERTER LEVER |
| 18 | 334758 | SUPPORTO INVERTITORE | INVERTER SUPPORT |
| 19 | 5-102739 | RUBINETTO DOPPIO | DOUBLE VALVE |
| 20 | 524273 | SUPPORTO COMANDI | COMMAND SUPPORT |
| 21 | 452011 | BOCCOLA D.12X14X33,5 | BUSH D.12X14X33,5 |
| 22 | 2-00211 | RONDELLA D.6 | WASHER D.6 |
| 23 | 4-109664 | MOLLA COMANDO INTERRUTTORE | INVERTER SPRING |
| 24 | 2-00025 | SEEGER D.12 | SEEGER D.12 |
| 25 | 2-01979 | DADO ES.A. M6 | AUTOLOCKING HEXAGON NUT M6 |
| 26 | 2-00366 | VTE M6X40 | HEXAGON HEAD SCREW M6X40 |
| 27 | 2-01137 | DADO ES.A. M8 | AUTOLOCKING HEXAGON NUT M8 |
| 28 | 2-00212 | RONDELLA D.8 | WASHER D.8 |
| 29 | 2-00411 | VTE 1/2F M6X50 | HEXAGON HEAD SCREW 1/2F M6X50 |
| 30 | 2-00312 | VTCEI M6X25 | HEXAGON SOCKET HEAD SCREW M6X25 |
| 31 | 2-00362 | VTE M6X20 | HEXAGON HEAD SCREW M6X20 |
| 32 | 2-01272 | VATBIC D.2,9X9,5 | SCREW D.2,9X9,5 |
| 33 | 5-102740 | RUBINETTO SINGOLO | SINGLE VALVE |
| 34 | 252030 | PEDALE PNEUMATICO | PNEUMATIC PEDAL |
| 35 | 331381 | BIELLA | ROD |
| 36 | 2-01018 | DADO ES.A. M4 | AUTOLOCKING HEXAGON NUT M4 |
| 37 | 2-00291 | VTCEI M4X20 | HEXAGON SOCKET HEAD SCREW M4X20 |
| 38 | 321200 | TUBO RYLSAN 8X1 L.300mm | RYLSAN HOSE 8X1 L.220mm |
| 39 | 332142 | TUBO RYLSAN 8X1 L.160mm | RYLSAN HOSE 8X1 L.120mm |
| 40 | 3-00112 | RACCPN-T T8/6 | T-FITTING T8/6 |
| 41 | 5-101614 | PEDALIERA 2 VELOCITA | PEDAL ASSEMBLY 2 SPPED |
| 42 | 2-00309 | VTCEI M6X16 | HEX. SOCKET HEAD SCREW M6X16 |
| 43 | 2-00364 | VTE M6X30 | HEXAGON HEAD SCREW M6X30 |
| 44 | 4-105045 | STAFFA ANTIROTAZIONE | ANTIROTATING PLATE |
| 45 | 461535 | BLOCCHETTO MICRO | MICRO BLOCK |
| 46 | 4-105044 | SUPPORTO MICRO | MICRO SUPPORT |
| 47 | 2-00578 | VTCIC M3X30 | SCREW M3X30 |
| 48 | 2-00576 | VTCIC M3X20 | SCREW M3X20 |
| 49 | 440874 | MICRO 16A 250V | MICRO 16A 250V |
| 50 | 2-71547 | ROSETTA D.3 | WASHER D.3 |
| 51 | 2-00208 | RONDELLA D.3 | WASHER D.3 |
| 52 | 2-00124 | DADO ES. M3 | HEXAGON NUT M3 |
| 53 | 4-102402 | COPERCHIO | COVER |
| 54 | 2-00155 | DADO ES. M6 | HEXAGON NUT M6 |

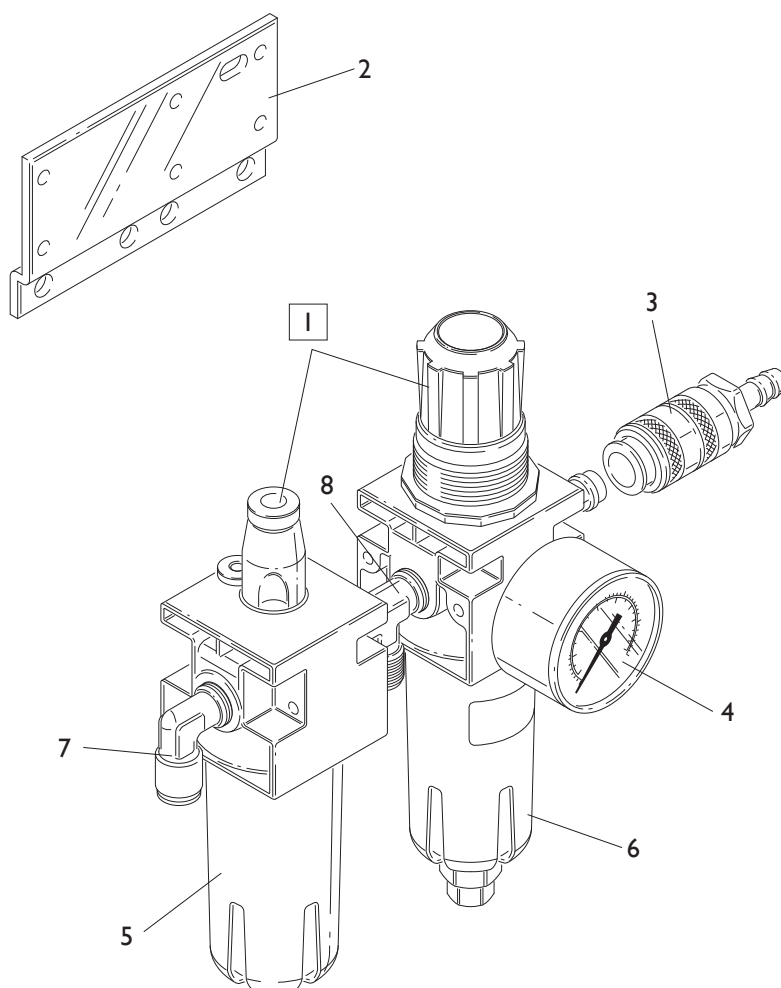
GRUPPO GONFIAGGIO T.I.
T.I. INFLATION GROUP



TORNA AL COMPLESSIVO
RETURNS TO OVERALL

| Ref. | Code | Descrizione | Description |
|------|----------|------------------------------------|---------------------------------------|
| 1 | 1-01683 | TUBO RYLSAN D8X1 | RYLSAN HOSE D.8X1 |
| 2 | 1-04223 | TUBO POLIUR.ARIA D.10X1,25 | HOSE D.10X1,25 |
| 3 | 252625 | PEDALE GONFIAGGIO | INFLATION PEDAL |
| 4 | 452624 | ANTIVIBRANTE M/F 20X11 M6X9 | VIBRATION DAMPING 20X11 M6X9 |
| 5 | 2-00150 | DADO ES. M6 | HEXAGON NUT M6 |
| 6 | 403751 | FASCETTA D.8-16 | FASTEN D.8-16 |
| 7 | 241841 | RACCORDO GIREVOLE T.I. | ROTATING JOINT T.I. |
| 8 | 346266 | TUBO IN GOMMA 25X37 18ATM. L.630mm | RUBBER HOSE 25X37 L.630mm |
| 9 | 342289 | TUBO RYLSAN TRASP. 14X1 L.650mm | RYLSAN HOSE 14X1 L.650mm |
| 10 | 3-00117 | RACCPN-TL G1/8C T6/4 | TL-FITTING G1/8C T6/4 |
| 11 | 242290 | VALVOLA DI GONFIAGGIO T.I. | T.I. INFLATION VALVE |
| 12 | 3-02945 | CARTUCCIA | CARTRIGE |
| 13 | 4-402799 | RACCPN-TO G1/4C T8 | T-FITTING G1/4C T8 |
| 14 | 4-402798 | RACCPN-LO G1/4C T8 | L-FITTING G1/4C T8 |
| 15 | 243020 | VALVOLA | VALVE |
| 16 | 2-94006 | VTCEI 1/2F M6X40 | HEXAGON SOCKET HEAD SCREW 1/2F M6X40 |
| 17 | 342286 | STAFFA PORTA VALVOLA | VALVE BRACKET |
| 18 | 5-106703 | LIMITATORE GONFIAGGIO CPL. | VALVE ASSEMBLY |
| 19 | 4-119680 | SUPPORTO VALVOLA | VALVE SUPPORT |
| 20 | 315268 | TUBO RYLSAN 6X1 L.260mm | RYLSAN HOSE 6X1 L.260mm |
| 21 | 354410 | TUBO 18 ATM. D.6-14 L.3150mm | RUBBER HOSE D.6-14 L.3150mm |
| 22 | 2-02804 | DADO ES. M4 | HEXAGON NUT M4 |
| 23 | 2-00851 | VTCEI M4X40 | HEXAGON SOCKET HEAD SCREW M4X40 |
| 24 | 3-03313 | LIMITATORE DI GONFIAGGIO | VALVE |
| 25 | 5-105676 | GRUPPO DI GONFIAGGIO CPL. | INFLATION ASSEMBLY |
| 26 | 3-00004 | RACCPN ATTACCO RESCA 7 G1/8 | RESCA FITTING G1/8 |
| 27 | 352614 | TUBO IN GOMMA L.3500mm | RUBBER HOSE L.3500mm |
| 28 | 2-00289 | VTCEI M4X10 | HEXAGON SOCKET HEAD SCREW M4X10 |
| 29 | 2-00209 | RONDELLA D.4 | WASHER D.4 |
| 30 | 352968 | SUPPORTO VALVOLA | VALVE SUPPORT |
| 31 | 3-00464 | RACCPN-D G1/8G T8 | D-FITTING G1/8G T8 |
| 32 | 235463 | VALVOLA SGONFIAGGIO | DEFLATION VALVE |
| 33 | 3-00365 | VALVOLA 3/2 1/8 | VALVE 3/2 1/8 |
| 34 | 338576 | DISTANZIALE 17X32 | SPACER 17X32 |
| 35 | 3-00460 | RACCPN-D G1/4 T6 | D-FITTING G1/4 T6 |
| 36 | 352619 | CAPPELLOTTO DISTANZIALE | SPACER |
| 37 | 5-100696 | SCATOLA GONFIAGGIO BAR/PSI | BAR/PSI INFLATION BOX ASSEMBLY |
| 37 | 5-105062 | SCATOLA GONFIAGGIO BAR | BAR INFLATION BOX ASSEMBLY |
| 38 | 262971 | TUBO GONFIAGGIO | INFLATION HOSE |
| 39 | 3-00490 | MANOMETRO BAR/PSI | BAR/PSI PRESSURE GAUGE |
| 39 | 3-00486 | MANOMETRO BAR | BAR PRESSURE GAUGE |
| 40 | 235463 | VALVOLA SGONFIAGGIO | DEFLATION VALVE |
| 41 | 3-00261 | RACCPN-D G1/4F T6 | D-FITTING G1/4F T6 |
| 42 | 3-00007 | RACCPN ATTACCO RESCA 7 G1/4 | RESCA FITTING G1/4 |
| 43 | 4-102371 | SCATOLA MANOMETRO | GAUGE BOX |
| 44 | 353537 | SUPPORTO MANOMETRO | PRESSURE GAUGE SUPPORT |
| 45 | 2-71485 | VTABIC D.3,9X13 | SCREW D.3,9X13 |
| 46 | 3-00460 | RACCPN-D G1/4 T6 | D-FITTING G1/4 T6 |
| 47 | 4-102374 | SUPPORTO | SUPPORTO |
| 48 | 35015496 | ADESIVO SGONFIAGGIO | LABEL |
| 49 | 301109 | RONDELLA D.13X22X0,6 | WASHER D.13X22X0,6 |

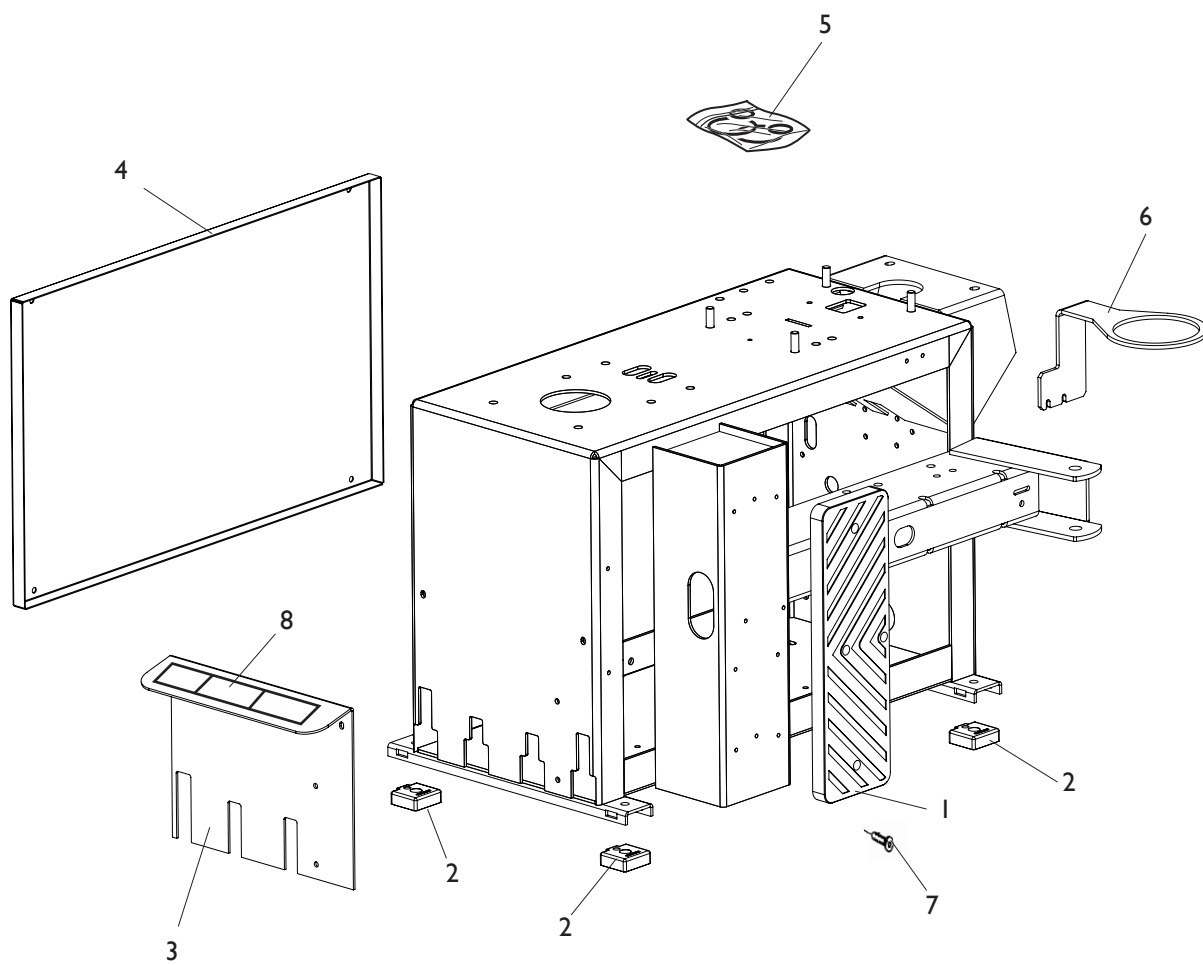
GRUPPO FILTRO FILTER GROUP



[TORNA AL COMPLESSIVO](#)
[RETURNS TO OVERALL](#)

| Rif. Ref. | Codice Code | Descrizione | Description |
|--------------|----------------|--------------------------------------|---|
| 1 | 456522 | FILTRO CPL (MANOM. ESCLUSO) | FILTER ASSEMBLY (GAUGE NOT INCLUDED) |
| 2 | 335695 | STAFFA FILTRO | FILTER BRACKET |
| 3 | 3-00257 | RACCORDO RAPIDO | FITTING |
| 4 | 3-00488 | MANOMETRO D.40 1/8 0-12 BAR/PSI | PRESSURE GAUGE D.40 1/8 0-12 BAR/PSI |
| 5 | 457511 | BICCHIERE LUBRIFICATORE | LUBRICATOR BOWL |
| 6 | 457512 | BICCHIERE FILTRO | FILTER BOWL |
| 7 | 3-00221 | RACCPN-L G1/4C T8 | L-FITTING G1/4C T8 |
| 8 | 3-00001 | RACCPN-T G1/4 M/M | T-FITTING G1/4 |

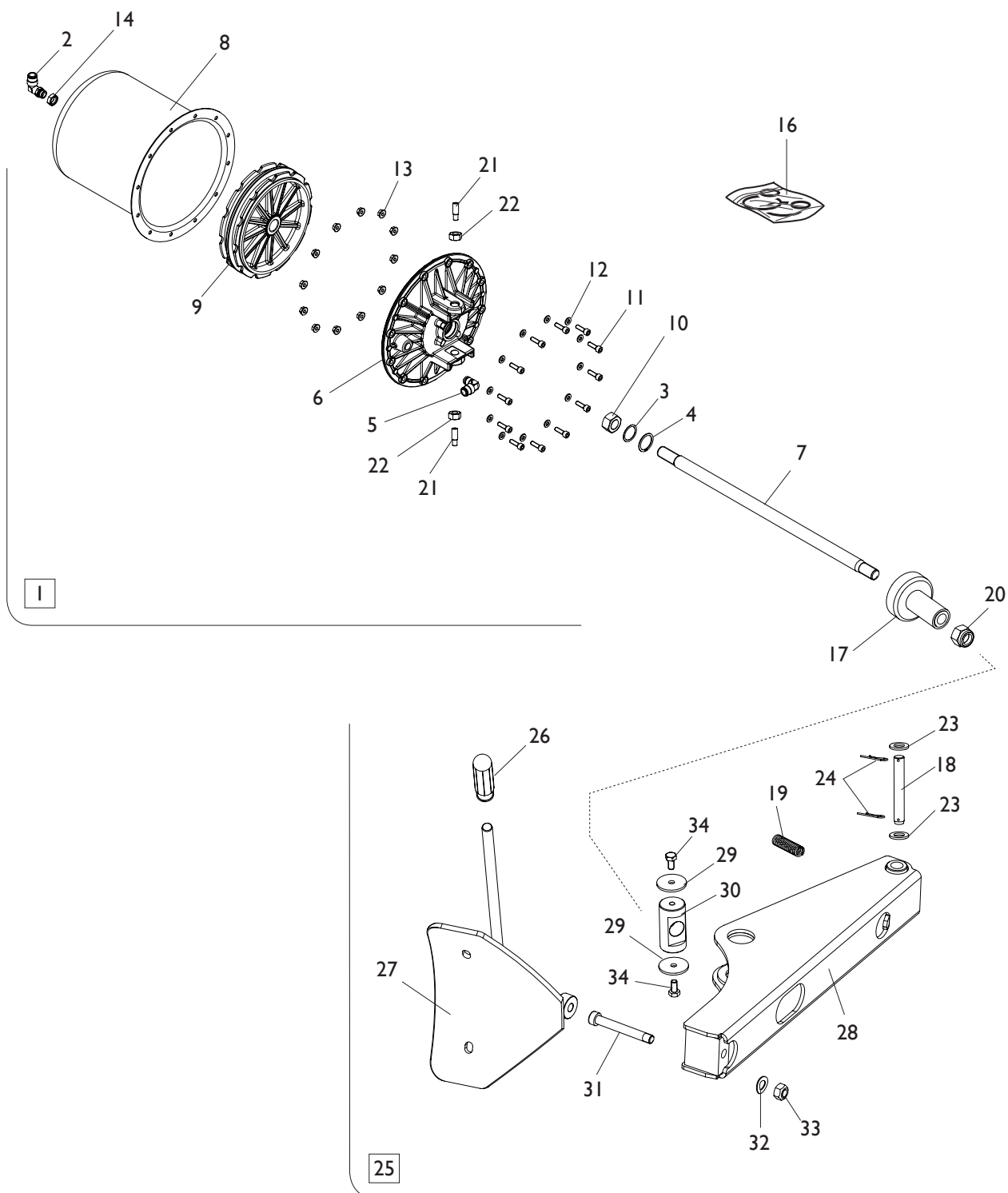
GRUPPO CASSONE FRAME GROUP



[TORNA AL COMPLESSIVO](#)
[RETURNS TO OVERALL](#)

| Rif. Ref. | Codice Code | Descrizione | Description |
|--------------|----------------|-----------------------------|---------------------------|
| 1 | 35016141 | APPOGGIO CERCHIO | RIM SUPPORT |
| 2 | 422019 | PIEDE | FOOT |
| 3 | 4-102436 | COVER | FRONT COVER |
| 4 | 4-102435 | COFANO | COVER |
| 5 | 5-105987 | KIT ADESIVI AS912 TI | LABEL KIT AS912 TI |
| 6 | 358135 | SUPPROTO GRASSO | GREASER SUPPORT |
| 7 | 2-01885 | VSTEI M6X25 | CSK SCREW SOCKET M6X25 |
| 8 | 4-102686 | ADESIVO PEDALIERA | PEDAL LABEL |

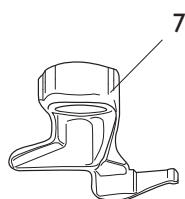
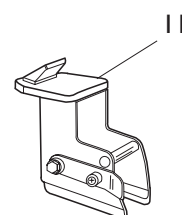
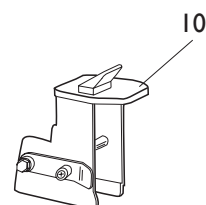
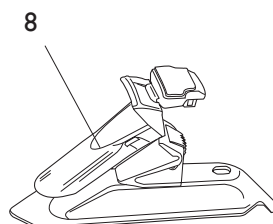
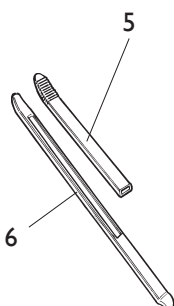
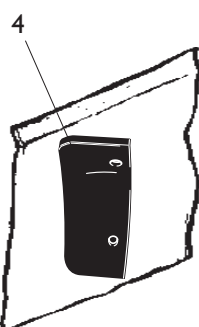
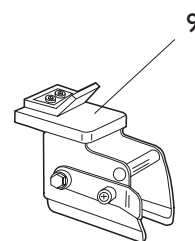
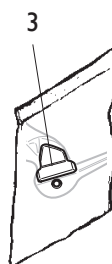
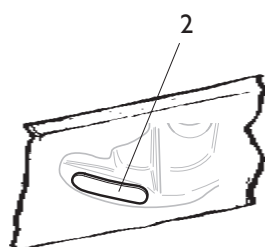
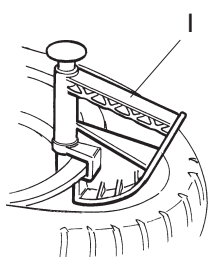
GRUPPO STALLONATORE BEAD BREAKING GROUP



[TORNA AL COMPLESSIVO](#)
[RETURNS TO OVERALL](#)

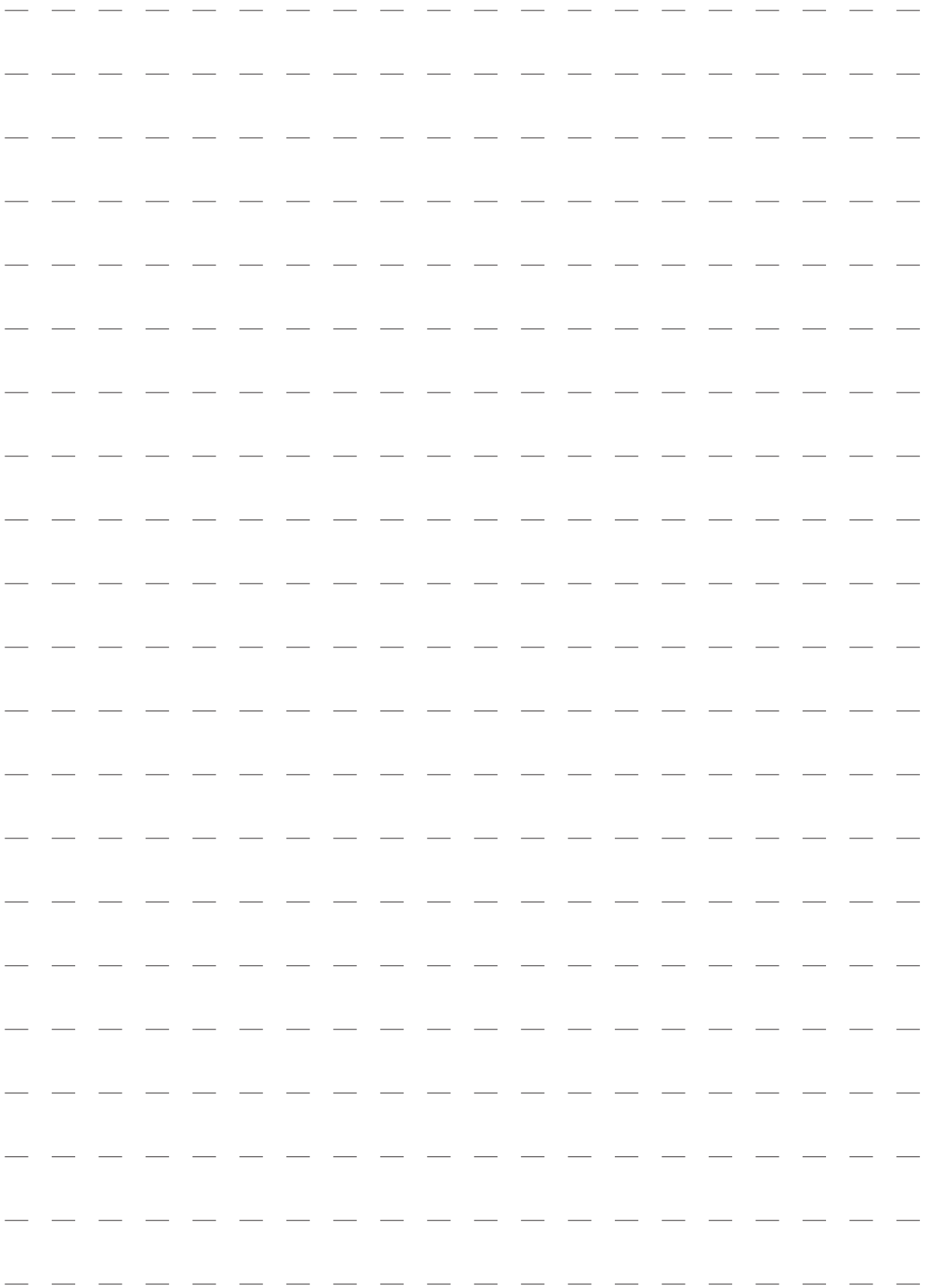
| Rif. Ref. | Codice Code | Descrizione | Description |
|--------------|----------------|-------------------------------------|---------------------------------|
| 1 | 5-100483 | CILINDRO STALLONATORE D.186 | BEAD BREAKER CYLINDER D.186 |
| 2 | 3-00517 | RACCPN-LO GI/4GO T10 | LO-FITTING GI/4GO T10 |
| 3 | 325561 | RONDELLA D.24X29,8X0,5 | WASHER D.24X29,8X0,5 |
| 4 | 434031 | ANELLO D.30 | SEGER D.30 |
| 5 | 3-00222 | RACCPN-L GI/4C T10 | L-FITTING GI/4C T10 |
| 6 | 351905 | FALNGIA D.186 | FLANGE D.186 |
| 7 | 4-101627 | STELO D.20X475 | STEM D.20X475 |
| 8 | 330190 | CILINDRO D.186 | CYLINDER D.186 |
| 9 | 337848 | PISTONE D.186X44 | PISTON D.186X44 |
| 10 | 2-00989 | DADO ES. M18X1,5 | HEXAGON NUT M18X1,5 |
| 11 | 2-00310 | VTCEI M6X20 | HEXAGON SOCKET HEAD SCREW M6X20 |
| 12 | 2-00211 | RONDELLA D.6 | WASHER D.6 |
| 13 | 436779 | DADO ES.A. M6 | AUTOLOCKING HEXAGON NUT M6 |
| 14 | 333524 | DADO 1/4 | NUT 1/4 |
| 16 | 238212 | KIT GUARNIZIONI CILINDRO D.186 | SEAL KIT CYLINDER D.186 |
| 17 | 424096 | TAMPONE DISTANZIALE | SPACER |
| 18 | 323903 | FULCRO BRACCIO STALLONATORE | FULCRUM PIN |
| 19 | 424364 | MOLLA TRAZIONE D.23X3X67 | SPRING D.23X3X67 |
| 20 | 2-01242 | DADO ES.A. M18X1,5 | AUTOLOCKING HEXAGON NUT M18X1,5 |
| 21 | 431864 | VITE SPECIALE FISS. CILINDRO M14X42 | SPECIAL SCREW M14X42 |
| 22 | 2-00992 | DADO ES. M14 | HEXAGON NUT M14 |
| 23 | 2-01045 | RONDELLA D.16 | WASHER D.16 |
| 24 | 435055 | COPIGLIA D.2X40 | PLUG D.2X40 |
| 25 | 5-100734 | BRACCIO STALLONATORE CON PALETTA | BEAD BREAKER ASSEMBLY |
| 26 | 87221002 | MANOPOLA | KNOB |
| 27 | 4-102549 | PALETTA | BEAD BREAKER |
| 28 | 224003 | BRACCIO | ARM |
| 29 | 323901 | RONDELLA D. 8,25X40X3 | WASHER D. 8,25X40X3 |
| 30 | 323902 | PERNO ORIENTABILE | PIN |
| 31 | 324008 | VITE SPECIALE M12X90 | SPECIAL SCREW M12X90 |
| 32 | 2-02249 | RONDELLA ELASTICA 13X24 | ELASTIC WASHER 13X24 |
| 33 | 422255 | DADO AUTOFR. TRISTOP M12 | TRISTOP AUTOLOCKING NUT M12 |
| 34 | 2-00372 | VITE M8X12 | HEXAGON HEAD SCREW M8X12 |

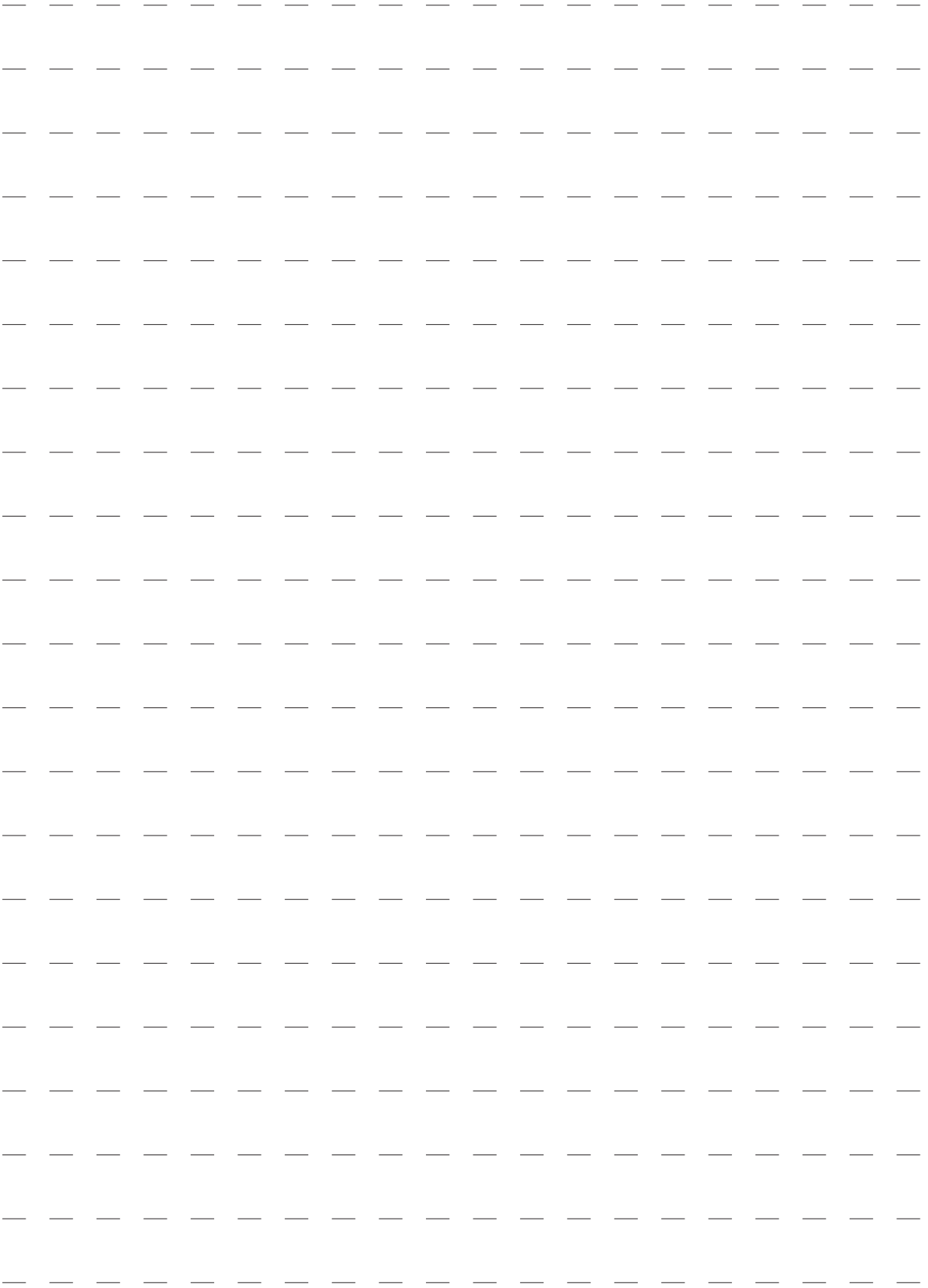
ACCESSORI ACCESSORIES



[TORNA AL COMPLESSIVO](#)
[RETURNS TO OVERALL](#)

| Rif. Ref. | Codice Code | Descrizione | Description |
|--------------|----------------|--------------------------------------|---|
| 1 | 801435685 | PINZA PREMITALLONE | PLIERS MOUNTING TOOL |
| 2 | 801258898 | KIT 6 PASTIGLIE TORRETTA NERE | BLACK PROTECTION HEAD KIT (6 PZ) |
| 3 | 801254341 | KIT 10 INSERTI TORRETTA NERE | BLACK PROTECTION HEAD KIT (10 PZ) |
| 4 | 801258383 | KIT 6 PROTEZIONI PALETTA NERE | BLACK BEAD BREAKER PROTECTION KIT (6 PZ) |
| 5 | 801246241 | KIT 6 PROTEZIONI LEVA NERE | BLACK LEVER PROTECTION KIT (6 PZ) |
| 6 | 4-108275 | LEVA | LEVER |
| 7 | 801252083 | KIT TORRETTA 8" | HEAD KIT 8" |
| 8 | 2200573 | KIT 4 PROTEZIONI GRIFFA NERE | BLACK PROTECTION KIT (4 PZ) |
| 9 | 8-11100041 | KIT 4 ATTACCHI MOTO 16-24" | MOTO ADAPTOR KIT 16-24" (4 PZ) |
| 10 | 8-11100042 | KIT 4 ATTACCHI MOTO 8" | MOTO ADAPTOR KIT 8" (4 PZ) |
| 11 | 8-11100036 | KIT 4 ATTACCHI MOTO 15-23" | MOTO ADAPTOR KIT 15-23" (4 PZ) |





Code 4-I03855E



Il disegno è realizzato con tutti i particolari ma solo quelli codificati sono forniti come ricambi. L'Azienda si riserva la facoltà di apportare modifiche senza preavviso.

Production date : 01 / 2019

The drawing shows all parts but only the coded parts are supplied as spares. The Company reserves the right to make modifications without prior notice.