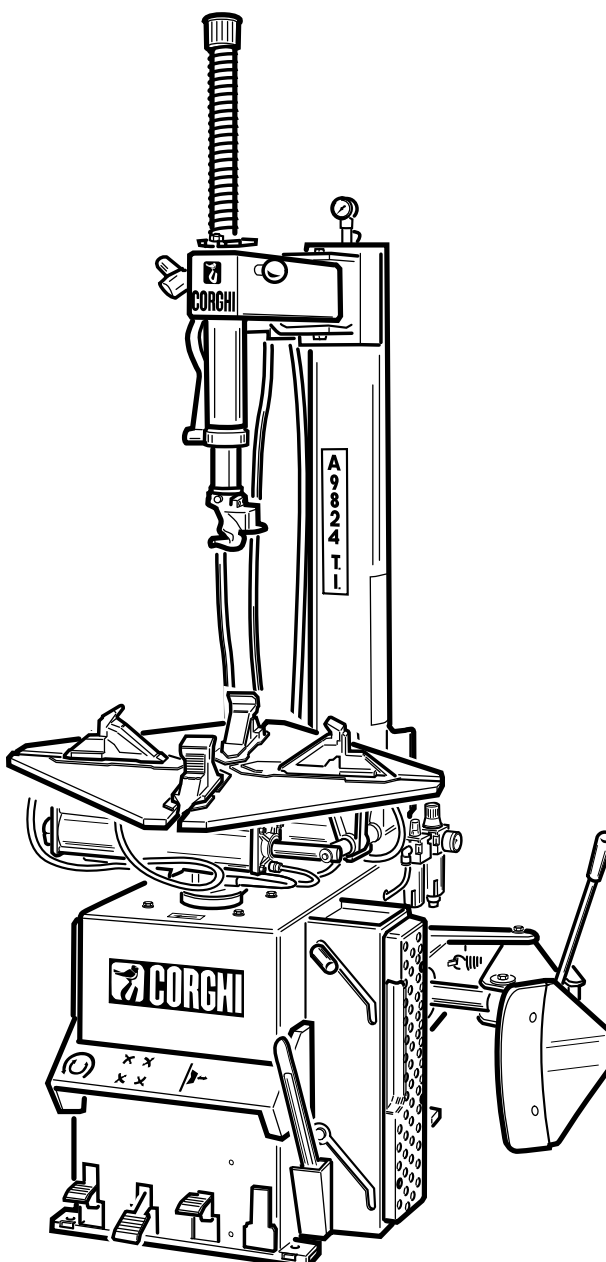


Questo libretto non autorizza l'utente ad intervenire sulle macchine ad esclusione di quanto esplicitamente descritto nel Manuale d'uso, ma consente all'utente di fornire informazioni precise all'Assistenza tecnica, al fine di ridurre i tempi di intervento.

A 9824

The "Spare parts" booklet does not authorize the user to carry out work on the machine unless expressly specified in the instruction manual, but does enable him to provide accurate information to the assistance service in order to reduce downtime.

PEZZI DI RICAMBIO SPARE PARTS LIST ERSATZTEILLISTE PIECES DE RECHANGE



Code

4-103962C

Production from

09 / 2012

Der Katalog Ersatzteile stellt keine Genehmigung zu eigenmächtigen Eingriffen dar (mit Ausnahme jener im Handbuch beschrieben), sondern er soll den Anwender in die Lage versetzen, dem technischen Service präzise Informationen zu liefern, um die Reparaturzeiten zu verkürzen.



Le livret "Pièces de rechange", n'autorise pas l'utilisateur à intervenir sur les machines, sauf pour tout ce qui est clairement décrit dans le manuel d'utilisation, mais lui permet de fournir des informations précises à l'assistance technique, afin de diminuer les délais d'intervention.

I

Sul presente documento sono stati indicati in grassetto i codici che sono variati rispetto a quelli riportati nella precedente versione del 12/10

En

Codes that have changed from those given in the previous version dated 12/10 are indicated in bold type in this document

De

Die gegenüber der Vorgängerversion vom 12/10 geänderten Codes sind im vorliegenden Dokument fettgedruckt angegeben

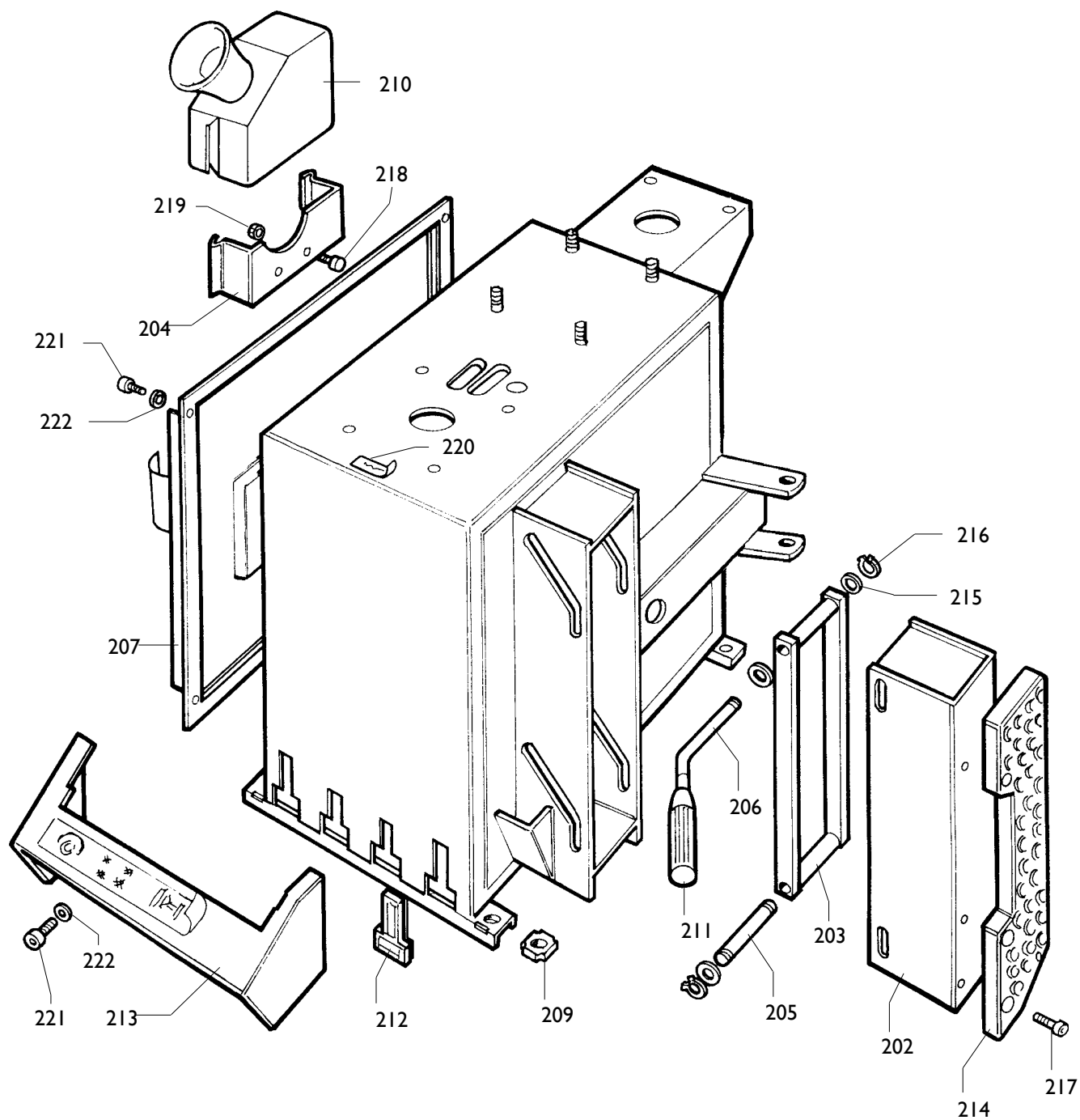
Fr


Ce document reporte en gras les codes qui ont été modifiés par rapport à ceux reportés dans la version précédente du mois de 12/10



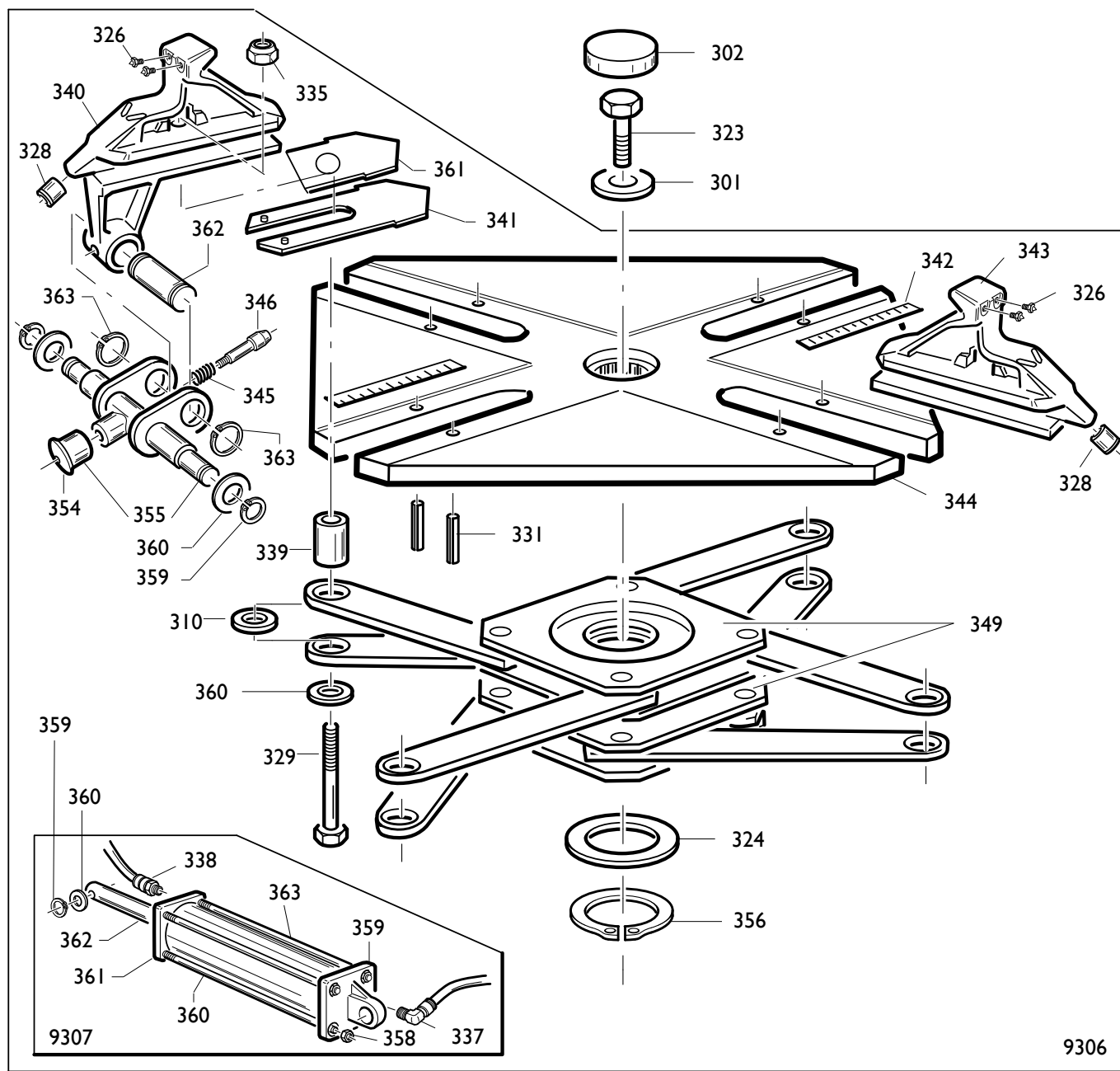
	A 9824 TI	Fig. A	03A / 03	Braccio operante
--	------------------	---------------	-----------------	-------------------------


0103	318216	RONDELLA	WASHER	UNTERLEGSCHEIBE	RONDELLE
0104	323881	PERNO	PIN	ZAPFEN	PIVOT
0105	429971	COPERCHIO	LID	DECKEL	COUVERCLE
0106	238779	BRACCIO	ARM	ARM	BRAS
0107	223877	ECCENTRICO	ECCENTRIC	NOCKEN	EXCENTRIQUE
0108	340343	BRACCIO	ARM	ARM	BRAS
0109	341001	BLOCCAGGIO	LOCKING	SPERRE	BLOCAGE
0110	341249	VITE	SCREW	SCHRAUBE	VIS
0111	423889	POMOLO	KNOB	BALLENGRIFF	POMMEAU
0113	428681	ANELLO	RING	RING	ANNEAU
0114	440341	MOLLA	SPRING	FEDER	RESSORT
0115	2-00025	ANELLO	RING	RING	ANNEAU
0118	2-01019	DADO	NUT	MUTTER	ECROU
0119	2-01225	VITE	SCREW	SCHRAUBE	VIS
0120	2-00152	DADO	NUT	MUTTER	ECROU
0121	2-00153	DADO	NUT	MUTTER	ECROU
0122	2-00382	VITE	SCREW	SCHRAUBE	VIS
0123	441580	MANOPOLA	KNOB	BALLENGRIFF	BOUTON
0130	338808	SUPPORTO	SUPPORT	LAGER	SUPPORT
0132	2-01312	VITE	SCREW	SCHRAUBE	VIS
0133	346273	DISTANZIALE	SPACER	ABSTANDSSTUECK	ENTRETOISE
0134	258458	TORRETTA	MOUNT/DEMOUNT HEAD	DREHKOPF	TOURELLE
0135	5-101130	PALO	SHAFT	MAST	POTEAU
0136	423907	POMOLO	HANDLE		
0137	2-00213	RONDELLA M10	WASHER		
0138	350194	VITE	SCREW		
0139	350197	VITE	SCREW		
0140	2-71357	VITE M12	SCREW		
0141	2-01275	DADO M10	NUT		
0143	441631	RODELLA	WASHER		
0144	2-00381	VITE M10X35	SCREW		
9050	241608	GR.MANOMETRO	PRESSURE GAUGE KIT		
0124	3-00271	NIPPLO	CONNECTION	NIPPEL	NIPPLE
0125	3-00356	VALVOLA	VALVE	VENTIL	VANNE
0126	3-00488	MANOMETRO	PRESSURE GAUGE	DRUCKMESSER	MANOMETRE
0127	3-00131	RACCORDO	CONNECTOR	ANSCHLUSS	RACCORD
0128	3-00138	RACCORDO	CONNECTOR	ANSCHLUSS	RACCORD



	A 9824 TI	Fig. B	05A / 09	Cassone.
--	------------------	---------------	-----------------	-----------------

0202	238911	PROLUNGA APPOGGIO	EXTENSION CORD	VERLAENGERUNG	RALLONGE
0203	239050	BIELLA	TRACE	PLEUELSTANGE	BIELLE
0204	315522	SUPPORTO	SUPPORT	LAGER	SUPPORT
0205	339046	PERNO BIELLA	PIN	ZAPFEN	PIVOT
0206	339456	PERNO MANIGLIA	PIN	ZAPFEN	PIVOT
0207	341176	COFANO	HOOD	HAUBE	COFFRE
0209	422019	PIEDE	FOOT	FUSS	PIED
0210	423405	CONTENITORE	CONTAINER	BEHAELTER	CONTENEUR
0211	425219	MANOPOLA	KNOB	BALLENGRIFF	BOUTON
0212	429006	TAPPO	SHIELD	ABDECKUNG	PROTECTION
0213	429976	PROTEZIONE	SHIELD	ABDECKUNG	PROTECTION
0214	436199	APPOGGIO	RIM SUPPORT	STUETZE	APPUI
0215	2-00215	RONDELLA	WASHER	UNTERLEGSCHIEBE	RONDELLE
0216	2-01122	ANELLO	RING	RING	ANNEAU
0217	2-01885	VITE	SCREW	SCHRAUBE	VIS
0218	2-01223	VITE M6X16	SCREW		
0219	2-00127	DADO M6	NUT		
0220	418135	ADESIVO ROTAZIONE	LABEL		
0221	2-00310	VITE M6X20	SCREW		
0222	2-00211	RONDELLA D.6	WASHER		

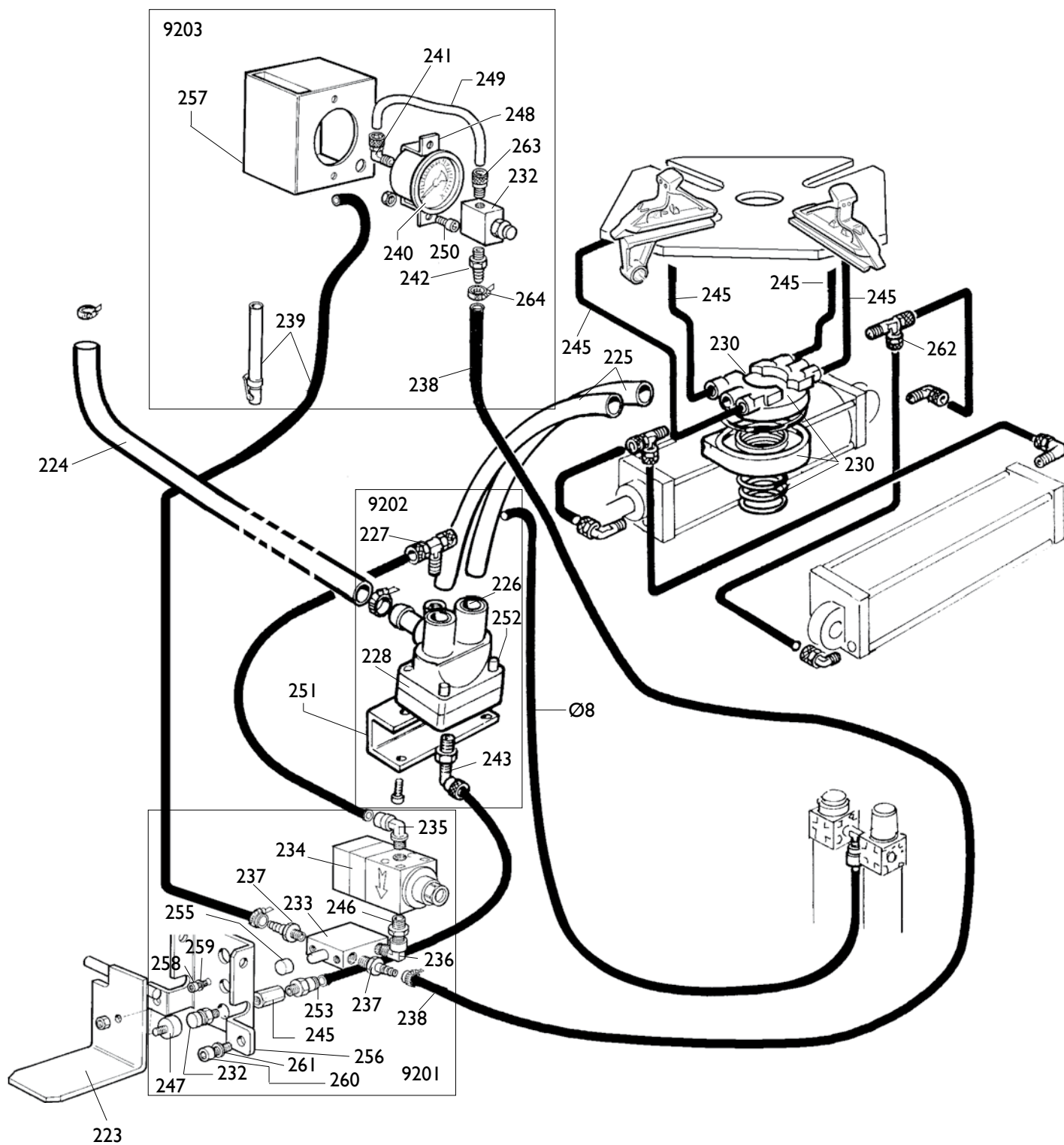


	A 9824 TI	Fig. C	04 / 12	Autocentrante T.I. 10÷24"
--	------------------	---------------	----------------	--------------------------------------

0300	238548	KIT GUARNIZIONI	SEALS KIT	DICHTUNGSATZ	KIT JOINTS
0301	323363	RONDELLA	WASHER	UNTERLEGSCHIEBE	RONDELLE
0302	426514	TAPPO	PLUG	STOPFEN	BOUCHON
0323	2-01216	VITE	SCREW	SCHRAUBE	VIS

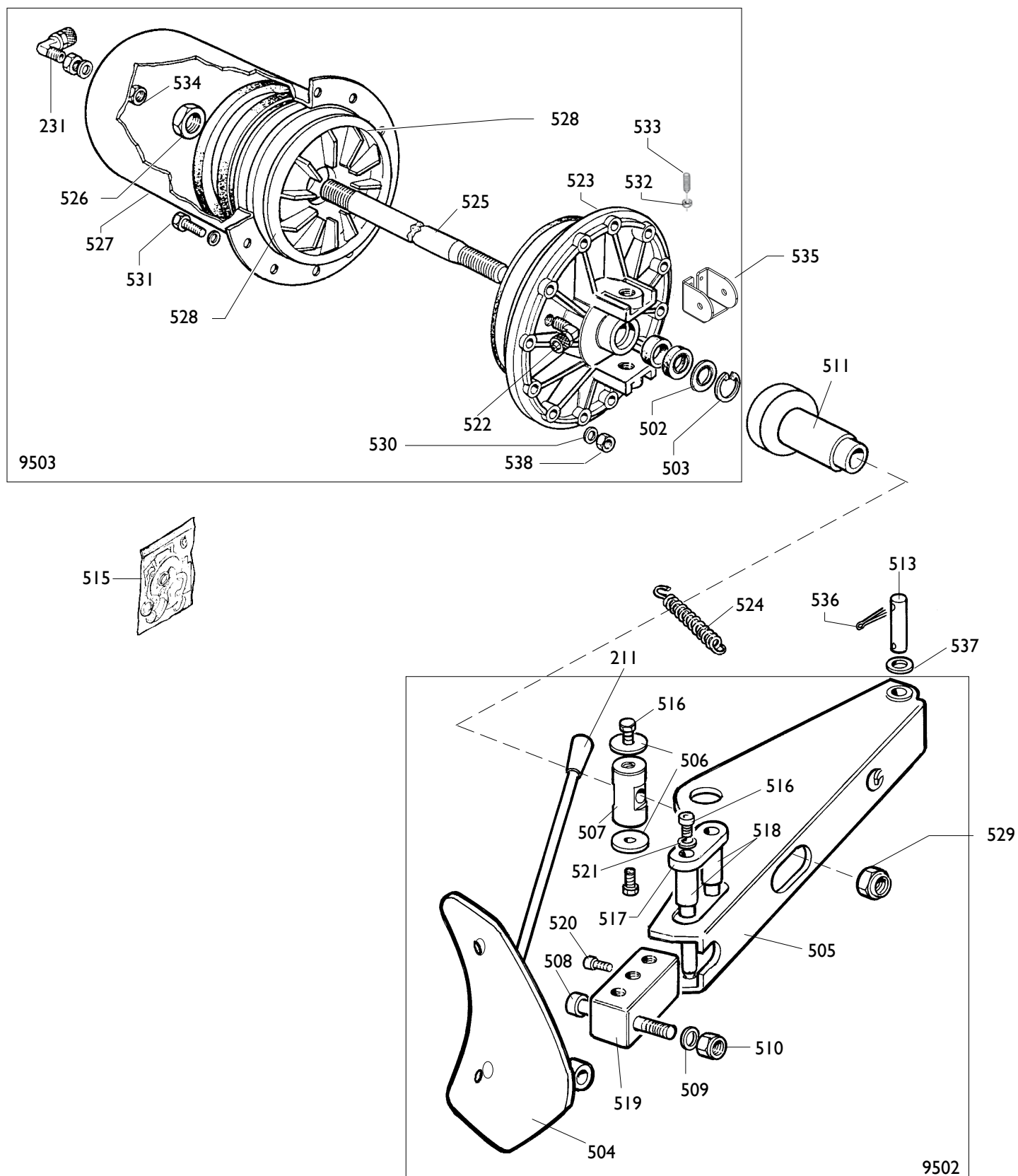
9306	5-100461	AUTOCENTRANTE T.I.	TURNABLE T.I.	SPANNFUTTER T.I.	P.AUTOC. T.I.
0310	437964	RONDELLA	WASHER	UNTERLEGSCHIEBE	RONDELLE
0324	455082	RONDELLA	WASHER	UNTERLEGSCHIEBE	RONDELLE
0326	339146	PUNTE DI BLOCC.	LOCKING PEAK	FESTKLEMMENSPIITZE	POINTE DE BLOCAGE
0328	441100	RACCORDO T.I.	CONNECTOR T.I.	ANSCHLUSS T.I.	RACCORD T.I.
0329	2-02199	VITE	SCREW	SCHRAUBE	VIS
0331	2-01059	SPINA	PLUG	STECKER	FICHE
0335	2-02200	DADO	NUT	MUTTER	ECROU
0339	353803	BOCCOLA	BUSHING	LAGER	DOUILLE
0340	5-100460	APPOGGIO T.I. TRAINANT.	RIM SUPPORT T.I.	STUETZE T.I.	APPUI T.I.
0341	4-101441	COPRIASOLA	COVER	LOCHSTOPFEN	BOUCHON
0342	4-101456	TARGHETTA	DATA PLATE	TYPENSHIELD	PLAQUETTE
0343	5-100459	APPOGGIO T.I. TRAINATO	RIM SUPPORT T.I.	STUETZE T.I.	APPUI T.I.
0344	4-101438	PIATTO	PLATE	TELLER	PLAT
0345	4-101422	MOLLA	SPRING	FEDER	RESSORT
0346	4-101444	INNESTO	PIN	ZAPFEN	PIVOT
0354	4-109384	POMOLO	KNOB	BALLENGRIFF	POMMEAU
0355	5-103522	MANOVELLA+POMOLO	CRANK	KURBEL	MANIVELLE
0349	4-101651	FLANGIA	FLANGE	FLANSCH	FLASQUE
0356	2-01283	SEEGER D.65	SEEGER		
0359	2-00025	SEEGER D.12	SEEGER		
0360	2-00214	RONDELLA D.12	WASHER		
0361	4-101453	SLITTA	COVER		
0362	4-101442	PERNO	PIN		
0363	2-71587	SEEGER D.20	SEEGER		


9307	5-100455	CILINDRO DESTRO	CYLINDER RIGHT	ZYLINDER	CYLINDRE
9307	5-100454	CILINDRO SINISTRO	CYLINDER LEFT	ZYLINDER	CYLINDRE
0337	3-02044	RACCORDO	CONNECTOR	ANSCHLUSS	RACCORD
0338	3-02045	RACCORDO	CONNECTOR	ANSCHLUSS	RACCORD
0359	4-115948	FLANGIA POST.	FLANGE		
0360	4-115951	CAMICIA	LINER		
0361	5-105111	FLANGIA ANT.	FLANGE		
0362	4-115959	STELO	ROD		
0363	4-115949	TIRANTE	PIN		
0358	2-01137	DADO M8	NUT		



	A 9824 TI	Fig. D	03B / 03	Sistema di gonfiaggio
--	------------------	---------------	-----------------	------------------------------

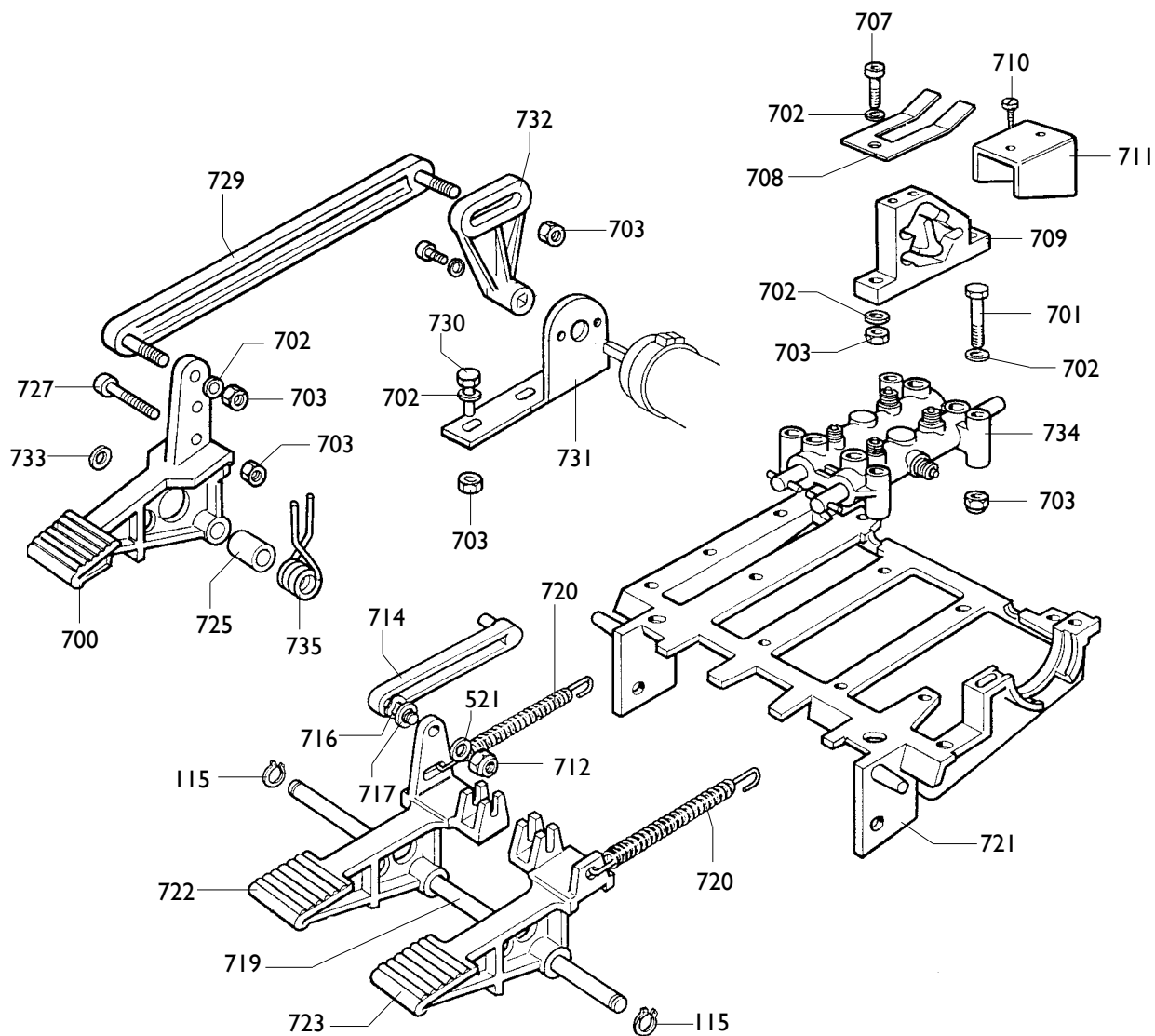
Ø6	1-01684	TUBO	PIPE	ROHR	TUYAU
Ø8	1-01683	TUBO	PIPE	ROHR	TUYAU
0223	252625	PEDALE	PEDAL	PEDAL	PEDALE
0224	346266	TUBO	PIPE	ROHR	TUYAU
0225	342289	TUBO Ø10	PIPE	ROHR	TUYAU
0245	1-04223	TUBO	PIPE	ROHR	TUYAU
0251	342286	STAFFA	BRACKET		
0230	241841	RACCORDO	CONNECTOR	ANSCHLUSS	RACCORD
0262	3-00117	RACCORDO	CONNECTOR		
9202	242290	VALVOLA	VALVE	VENTIL	VANNE
0226	3-00403	CARTUCCE	CARTRIDGE	EINSATZ	CARTOUCHE
0227	3-00287	RACCORDO	CONNECTOR	ANSCHLUSS	RACCORD
0228	243020	VALVOLA	VALVE	VENTIL	VANNE
0243	3-00051	RACCORDO	CONNECTOR	ANSCHLUSS	RACCORD
0252	2-94066	VITE	SCREW		
9201	252568	GRUPPO	ASSEMBLY	GRUPPE	GROUPE
0232	235463	VALVOLA	VALVE	VENTIL	VANNE
0233	3-00365	VALVOLA	VALVE	VENTIL	VANNE
0234	3-00432	VALVOLA	VALVE	VENTIL	VANNE
0235	3-00221	RACCORDO	CONNECTOR	ANSCHLUSS	RACCORD
0246	3-00135	NIPPLO	CONNECTION	NIPPEL	NIPPLE
0236	3-00138	RACCORDO	CONNECTION		
0237	3-00004	INNESTO	CLUTCH	KUPPLUNG	EMBRAYAGE
0238	352614	TUBO L.1900mm	PIPE	ROHR	TUYAU
0245	338576	DISTANZIALE	SPACER		
0247	452624	ANTIVIBRANTE	ANTISHOCK		
0253	3-00460	RACCORDO	CONNECTION		
0255	352619	CAPPELOTTO	CUP		
0256	352698	SUPPORTO VALVOLA	SUPPORT		
0258	2-00295	VITE M4X8	SCREW		
0259	2-00209	RONDELLA D.4	WASHER		
0260	2-00320	VITE M8	SCREW		
0261	2-00212	RONDELLA	WASHER		
9203	252600	SCATOLA	BOX	SCHACHTEL	BOITE
0232	235463	VALVOLA	VALVE	VENTIL	VANNE
0238	352614	TUBO L.1900mm	PIPE	ROHR	TUYAU
0239	262971	TUBO	PIPE	ROHR	TUYAU
0240	3-00489	MANOMETRO	PRESSURE GAUGE	DRUCKMESSER	MANOMETRE
0241	3-00103	RACCORDO	CONNECTOR	ANSCHLUSS	RACCORD
0244	3-00007	INNESTO	CLUTCH	KUPPLUNG	EMBRAYAGE
0248	353537	SUPPORTO MANOMETRO	SUPPORT		
0249	325035	TUBO D.6 L.180	PIPE		
0250	2-71485	VITE M3,9X13	SCREW		
0257	234171	SCATOLA MANOMETRO	PRESSURE GAUGE BOX		
0263	3-00460	RACCORDO	CONNECTOR		
0264	403571	FASCETTA			




	A 9824 TI	Fig. E	05A / 04	Stallonatore
--	------------------	---------------	-----------------	---------------------

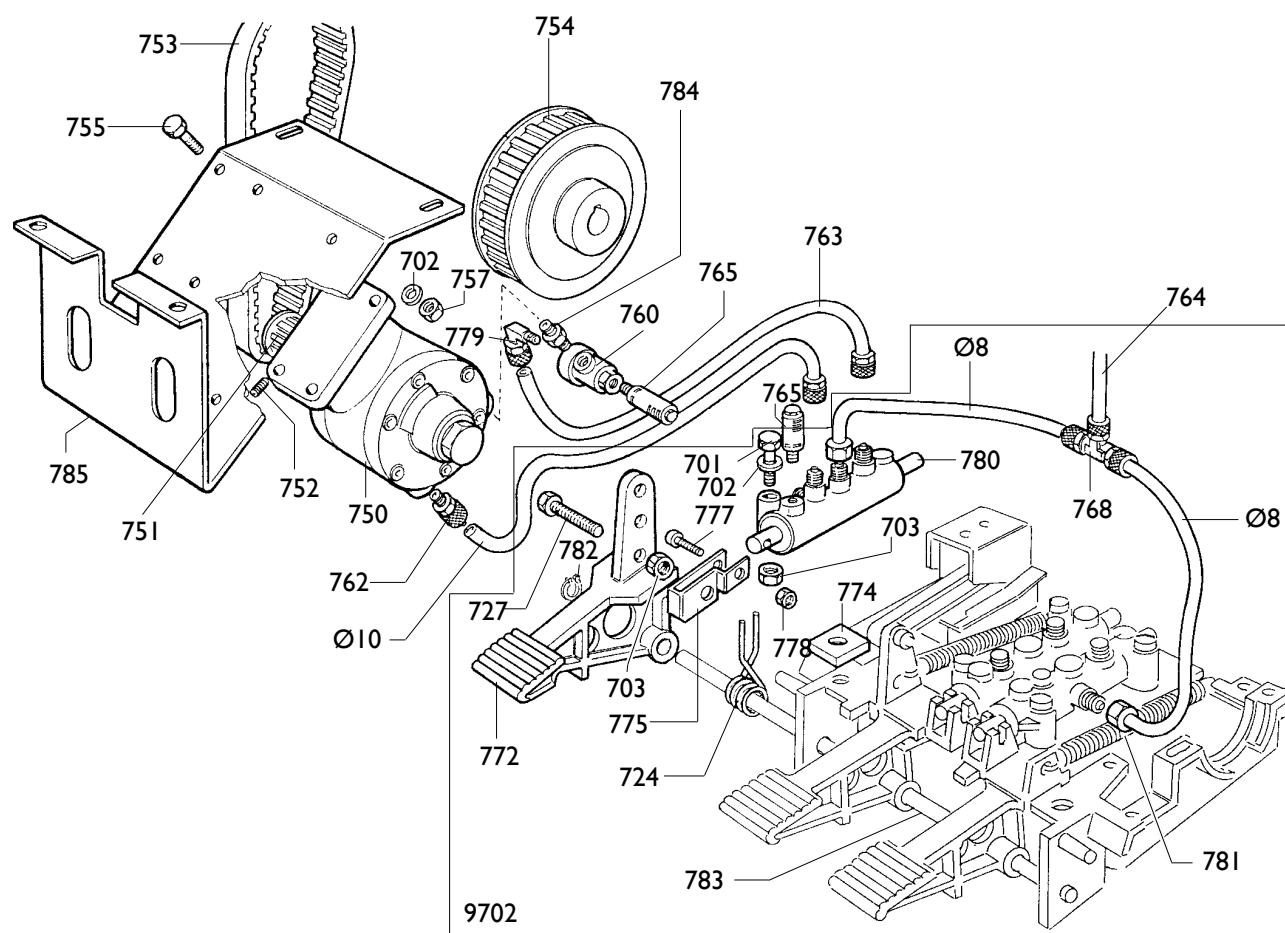
0211	425219	MANIGLIA	HANDLE	HANDGRIFF	POIGNEE
9503	5-100484	CILINDRO	CYLINDER	ZYLINDER	CYLINDRE
0231	3-00517	RACCORDO	CONNECTOR	ANSCHLUSS	RACCORD
0502	325561	RONDELLA	WASHER	UNTERLEGSCHEIBE	RONDELLE
0503	434031	ANELLO	RING	RING	ANNEAU
0522	3-00222	RACCORDO	CONNECTOR	ANSCHLUSS	RACCORD
0523	351905	FLANGIA	FLANGE	FLANSCH	FLASQUE
9502	245743	BRACCIO	ARM	ARM	BRAS
0504	224000	PALETTA	BEAD BREAKER	SCHAUFEL	PELLE
0505	245701	BRACCIO	ARM	ARM	BRAS
0506	323901	RONDELLA	WASHER	UNTERLEGSCHEIBE	RONDELLE
0507	339045	PERNO	PIN	ZAPFEN	PIVOT
0508	324008	VITE M12x90	SCREW		
0509	2-02249	RONDELLA	WASHER	UNTERLEGSCHEIBE	RONDELLE
0510	422255	DADO	NUT	MUTTER	ECROU
0516	2-00372	VITE	SCREW	SCHRAUBE	VIS
0517	345616	FERMO	RETAINER	ANSCHLAG	ARRET
0518	345617	PUNTE DI BLOC.	LOCKING PEAK	FESTKLEMMENSPIITZE	POINTE DE BLOC.
0519	345618	BLOCCHETTO	BLOCK	BLOCK	BLOC
0520	2-00308	VITE	SCREW	SCHRAUBE	VIS
0521	2-01299	RONDELLA	WASHER	UNTERLEGSCHEIBE	RONDELLE
0511	239061	TAMPONE	PAD	PUFFER	TAMPON
0513	323903	FULCRO	FULCRUM	DREHPUNKT	ENTABLURE
0515	238212	KIT GUARNIZIONI	SEALS KIT	DICHTUNGSATZ	KIT JOINTS
0524	4-101930	MOLLA	SPRING	FEDER	RESSORT
0525	4-101628	STELO	SHAFT	STEM	TIGE
0526	2-00989	DADO M18	NUT		
0527	330190	CAMICIA	LINER		
0528	337848	PISTONE	PISTON		
0529	2-01242	DADO M18	NUT		
0530	2-00211	RONDELLA D.6	WASHER		
0531	2-00310	VITE M6x20	SCREW		
0532	2-00992	DADO M14	NUT		
0533	431864	VITE	SCREW		
0534	333524	DADO 1/4	NUT 1/4		
0535	4-101742	SUPPORTO BRACCIO	ARM SUPPORT		
0536	435055	MOLLA D.2X10	SPRING		
0537	2-01045	RONDELLA D.16	WASHER		
0538	436779	DADO M6	NUT		

9701



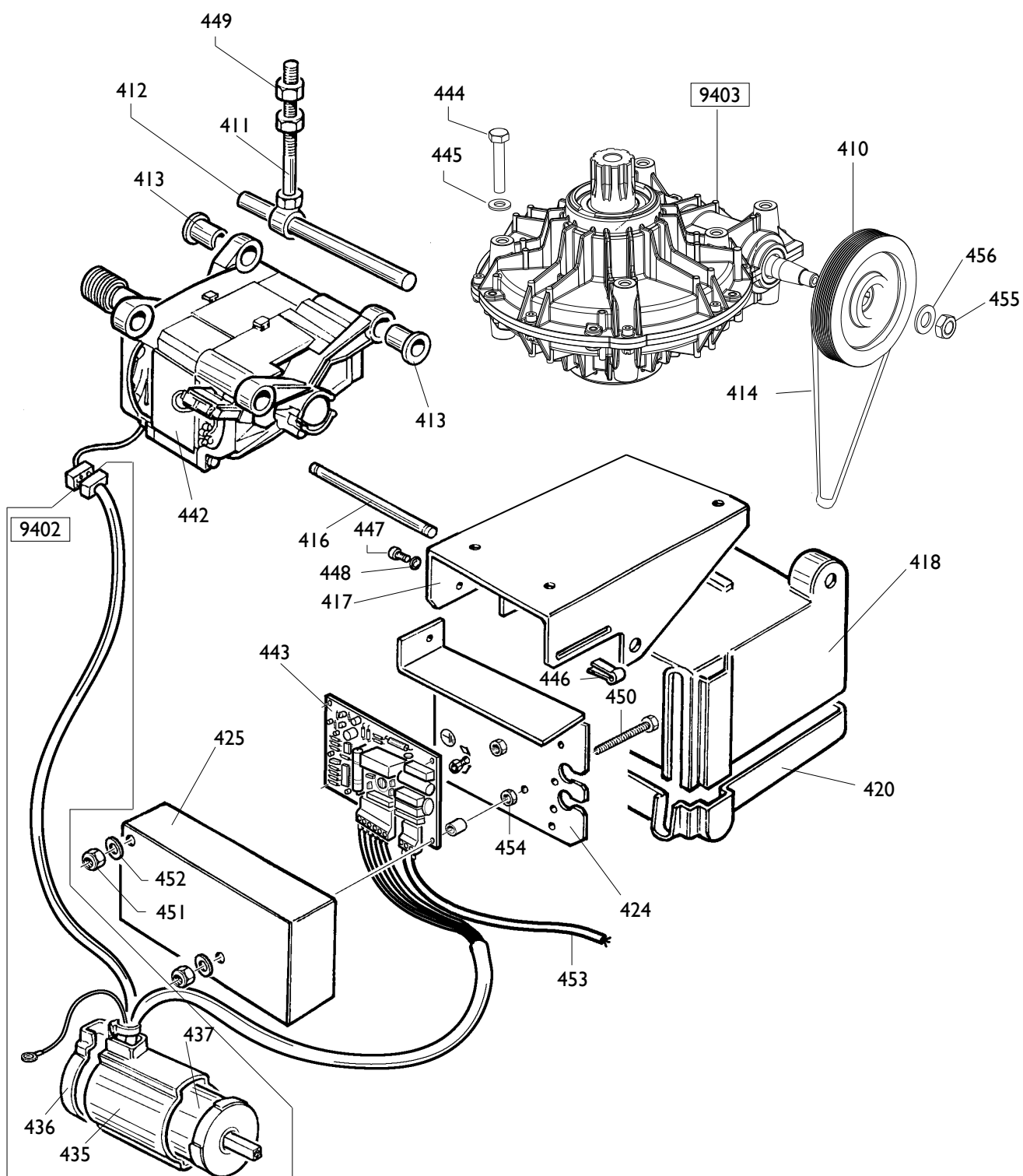
	A 9824 TI	Fig. F	03A / 03	Pedaliere
--	------------------	---------------	-----------------	------------------


9701	241201	PEDALIERA	CONTROL PEDAL	PEDALERIE	GR.PEDALES
0115	2-00025	ANELLO	RING	RING	ANNEAU
0521	2-00212	RONDELLA	WASHER	UNTERLEGSCHEIBE	RONDELLE
0700	5-102714	PEDALE INVERTITORE	PEDAL	PEDAL	PEDALE
0701	2-00411	VITE	SCREW	SCHRAUBE	VIS
0702	2-00211	RONDELLA	WASHER	UNTERLEGSCHEIBE	RONDELLE
0703	2-01979	DADO	NUT	MUTTER	ECROU
0707	2-00312	VITE	SCREW	SCHRAUBE	VIS
0708	325019	BALESTRA	LEAF SPRING	BLATTFEDER	RESSORT A LAMES
0709	425020	CAMMA	CAM	NOCKEN	CAME
0710	2-01272	VITE	SCREW	SCHRAUBE	VIS
0711	325018	CAVALLOTTO	U-BOLT	BUEGELBOLZEN	CRAMPILLON
0712	2-01137	DADO	NUT	MUTTER	ECROU
0714	425014	BIELLA	TRACE	PLEUELSTANGE	BIELLE
0716	2-02247	RONDELLA	WASHER	UNTERLEGSCHEIBE	RONDELLE
0717	309358	RONDELLA	WASHER	UNTERLEGSCHEIBE	RONDELLE
0719	325583	PERNO	PIN	ZAPFEN	PIVOT
0720	410628	MOLLA	SPRING	FEDER	RESSORT
0721	524273	SUPPORTO	SUPPORT	LAGER	SUPPORT
0722	325031	PEDALE AUTOCENT.	PEDAL	PEDAL	PEDALE
0723	325032	PEDALE STALLON.	PEDAL	PEDAL	PEDALE
0725	325050	DISTANZIALE	SPACER	ABSTANDSSTUECK	ENTRETOISE
0727	2-00366	VITE	SCREW	SCHRAUBE	VIS
0729	429009	BIELLA INVERT.	TRACE	PLEUELSTANGE	BIELLE
0730	2-00362	VITE	SCREW	SCHRAUBE	VIS
0731	334758	SUPPORTO	SUPPORT	LAGER	SUPPORT
0732	404283	LEVA	LEVER	HEBEL	LEVIER
0733	452011	BOCCOLA	BUSHING	LAGER	DOUILLE
0734	5-102739	RUBINETTO DOPPIO	COCK	HAHN	ROBINET
0735	4-109664	MOLLA	SPRING	FEDER	RESSORT



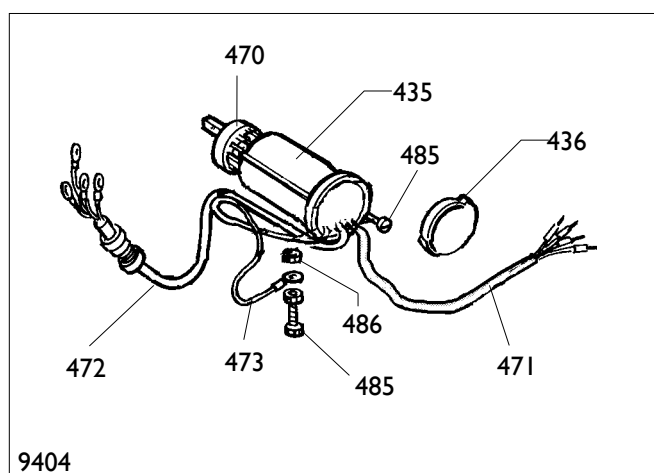
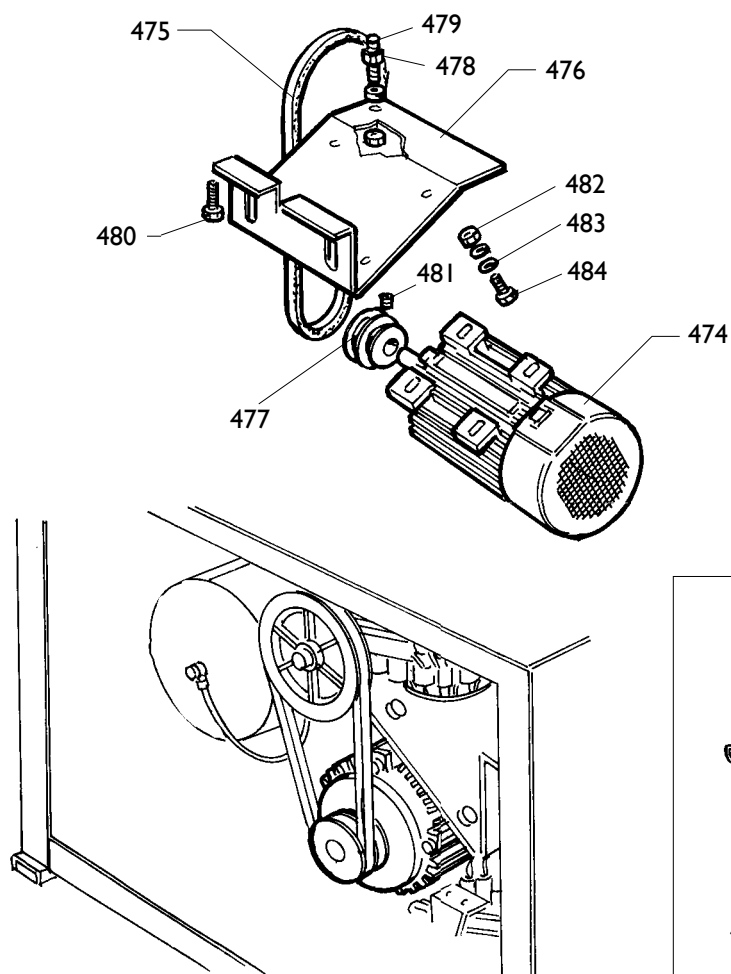
	A 9824 TI	Fig. G	03A / 03	Pedaliere pneumatica
--	------------------	---------------	-----------------	-----------------------------

9702	270526	PEDALIERA	CONTROL PEDAL	PEDALERIE	GR.PEDALES
0701	2-00411	VITE	SCREW	SCHRAUBE	VIS
0702	2-00211	RONDELLA	WASHER	UNTERLEGSCHEIBE	RONDELLE
0703	2-01979	DADO	NUT	MUTTER	ECROU
0724	4-109664	MOLLA	SPRING	FEDER	RESSORT
0727	2-00366	VITE	SCREW	SCHRAUBE	VIS
0768	3-00112	RACCORDO	CONNECTOR	ANSCHLUSS	RACCORD
0772	252030	PEDALE INVERT.	PEDAL	PEDAL	PEDALE
0774	329058	PIASTRINA	PLATE	PLAETTCHEN	PLAQUETTE
0775	331381	BIELLA	TRACE	PLEUELSTANGE	BIELLE
0777	2-00911	VITE	SCREW	SCHRAUBE	VIS
0778	2-01018	DADO	NUT	MUTTER	ECROU
0780	5-102740	RUBINETTO SINGOLO	COCK	HAHN	ROBINET
Ø8	1-01683	TUBO	PIPE	ROHR	TUYAU
Ø10	1-01685	TUBO	PIPE	ROHR	TUYAU
0750	319135	MOTORE	MOTOR	MOTOR	MOTEUR
0751	319076	PULEGGIA	PULLEY	RIEMENSCHIEBE	POULIE
0752	2-00801	VITE	SCREW	SCHRAUBE	VIS
0753	3-00585	CINGHIA	BELT	RIEMEN	COURROIE
0754	319073	PULEGGIA CONDOTTA	PULLEY	RIEMENSCHIEBE	POULIE
0755	2-00363	VITE	SCREW	SCHRAUBE	VIS
0757	422288	DADO	NUT	MUTTER	ECROU
0760	3-00316	VALVOLA	VALVE	VENTIL	VANNE
0762	3-00040	RACCORDO	CONNECTOR	ANSCHLUSS	RACCORD
0764	337328	TUBO L.840mm	PIPE	ROHR	TUYAU
0765	3-00183	SILENZIATORE	SILENCER	SCHALLDAEMPFER	SILENCIEUX
0779	3-00109	RACCORDO	CONNECTOR	ANSCHLUSS	RACCORD
0781	410628	MOLLA	SPRING		
0782	2-00025	SEEGER	SEEGER		
0783	325583	PERNO	PIN		
0784	3-00141	NIPPLO	NIPPLO		
0785	334768	CULLA	SUPPORT		

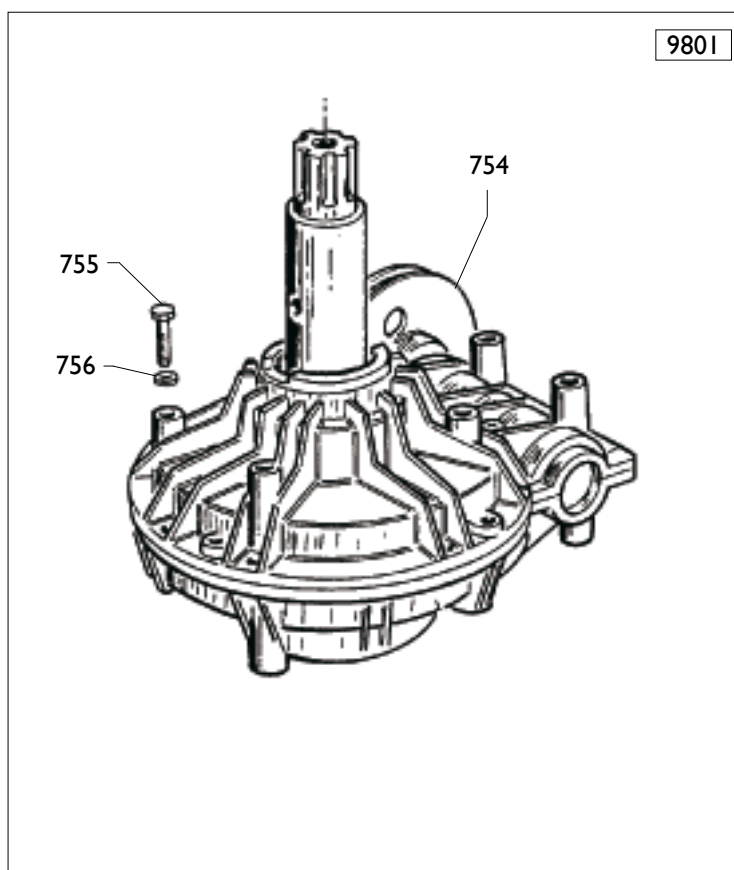


	A 9824 T.I.	Fig. H	03A / 03	Electric system with gear box
--	--------------------	---------------	-----------------	--------------------------------------

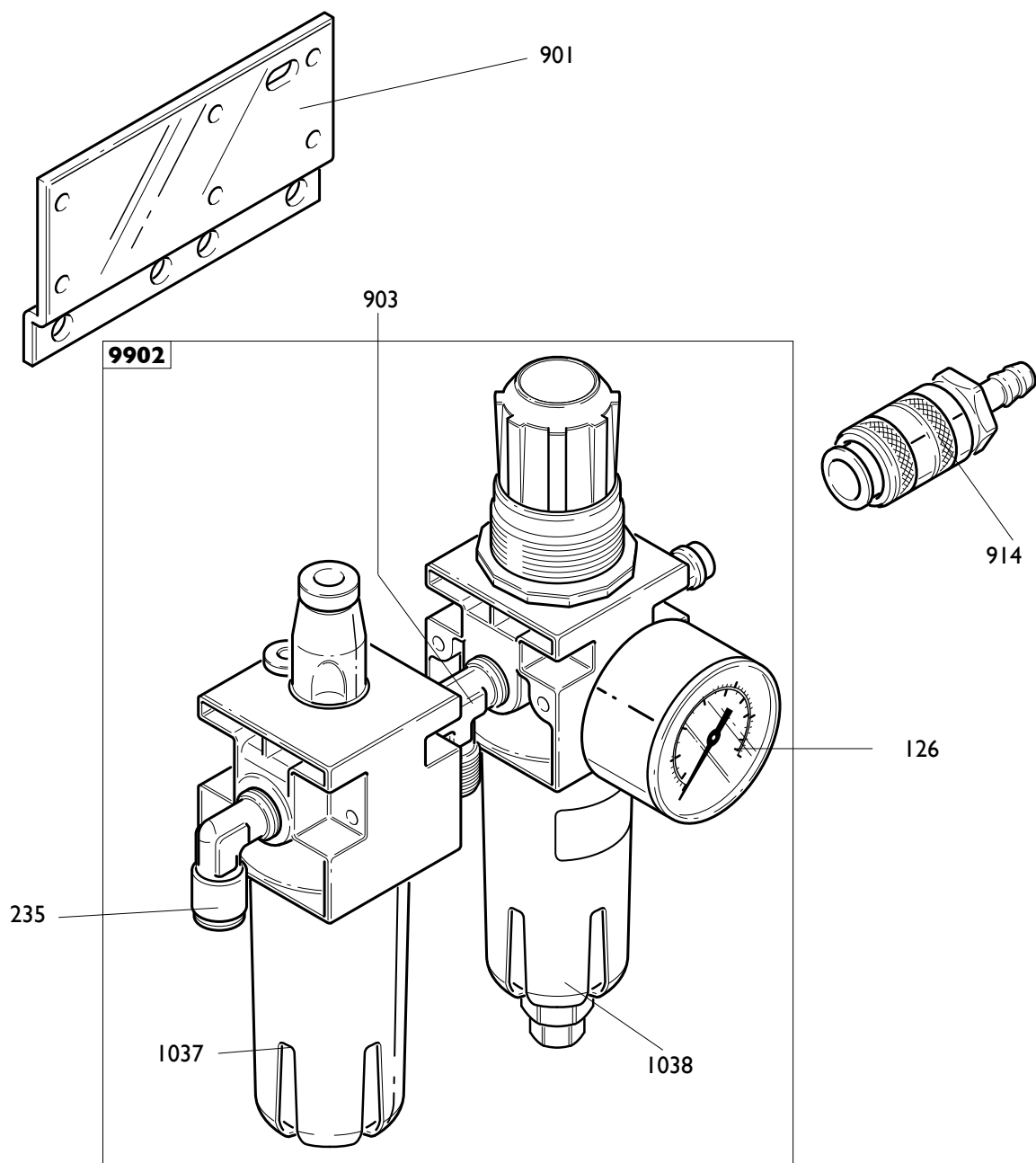
9403	5-102652	RIDUTTORE	GEAR BOX	GETRIEBE	REDUCTEUR
0410	354082	PULEGGIA	PULLEY	RIEMENSCHIEBE	POULIE
0411	5-100519	TIRANTE	STAY ROD	ZUGSTANGE	TIRANT
0412	340367	PERNO	PIN	ZAPFEN	PIVOT
0413	440365	BOCCOLA	BUSHING	LAGER	DOUILLE
0414	3-00575	CINGHIA	BELT	RIEMEN	COURROIE
0416	346012	PERNO	PIN	ZAPFEN	PIVOT
0417	346017	SUPPORTO	SUPPORT	LAGER	SUPPORT
0418	462572	COPERCHIO SUP.	LID	DECKEL	COUVERCLE
0420	462571	COPERCHIO INF.	LID	DECKEL	COUVERCLE
0424	349299	SUPPORTO	SUPPORT	LAGER	SUPPORT
0425	462573	COPERCHIO SK	LID	DECKEL	COUVERCLE
0442	462139	MOTORE 110V	MOTOR	MOTOR	MOTEUR
0443	462138	SK ELETTRON. 110V	P.C.BOARD	ELEKTR.PLATINE	FICHE ELECTR.
9402	262570	CAVO COLL.MOT.-INV.	CABLE	KABEL	CABLE
0435	432065	PROTEZIONE	SHIELD	ABDECKUNG	PROTECTION
0436	430991	COPERCHIO	LID	DECKEL	COUVERCLE
0437	5-102744	INVERTITORE	REVERSER	RICHTUNGSWENDER	INVERSEUR
0444	2-01046	VITE M10X55	SCREW		
0445	2-00213	RONDELLA M10	WASHER		
0446	2-01984	FERMAGLIO	STOP		
0447	2-00715	VITE M6X12	SCREW		
0448	2-71544	RONDELLA D.6	WASHER		
0449	2-91726	DADO M10	NUT		
0450	2-91645	VITE M4X70	SCREW		
0451	2-01018	DADO M4	NUT		
0452	2-00209	RONDELLA D.4	WASHER		
0453	247801	CAVO RETE	CABLE		
0454	2-00143	DADO M4	NUT		
0455	2-00941	DADO M14	NUT		
0456	2-00215	RONDELLA M14	WASHER		


9404

		IMPIANTO ELETTRICO	ELECTRIC SYSTEM	ELEKT.ANLAGE	INSTALL. ELECT.
9404	235574	3ph	3ph	3ph	3ph
0470	5-102742	INVERTITORE	REVERSER	RICHTUNGSWENDER	INVERSEUR
0471	235518	CAVO RETE	CABLE	KABEL	CABLE
0472	225390	CAVO MOTORE	CABLE	KABEL	CABLE
0473	225051	CAVALLOTTO	U-BOLT	BUEGELBOLZEN	CRAMPILLON
0485	2-00605	VITE M4X10	SCREW		
0486	2-00143	DADO M4	NUT		
0435	432065	PROTEZIONE	SHIELD	ABDECKUNG	PROTECTION
0436	430991	COPERCHIO	LID	DECKEL	COUVERCLE
0474	412959	MOTORE 3ph 400V	MOTOR 3ph 400V	MOTOR 3ph 400V	MOTEUR 3ph 400V
0475	3-00555	CINGHIA	BELT	RIEMEN	COURROIE
0476	334768	CULLA	CRADLE	WIEGE	BERCEAU
0477	325274	PULEGGIA	PULLEY	RIEMENSCHIEBE	POULIE
0478	2-00152	DADO M10	NUT		
0479	455920	VITE SPEC.M10X60	SCRE		
0480	2-00328	VITE M10X20	SCREW		
0481	2-01091	VITE M6X5	SCREW		
0482	421349	DADO M8	NUT		
0483	339208	RONDELLA M8	WASHER		
0484	2-00374	VITE M8X25	SCREW		

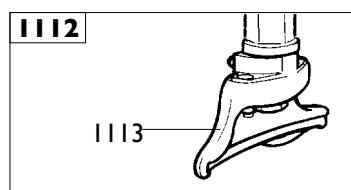
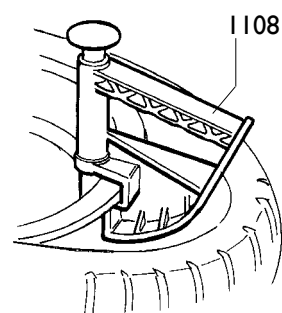
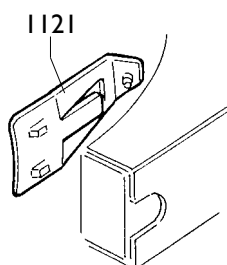
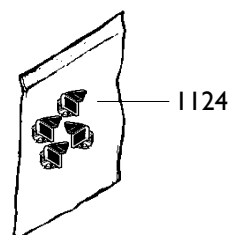
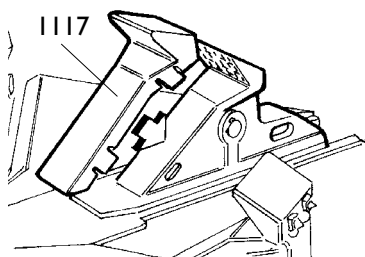
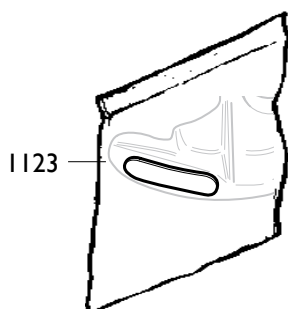
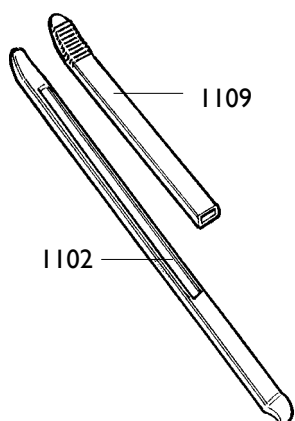
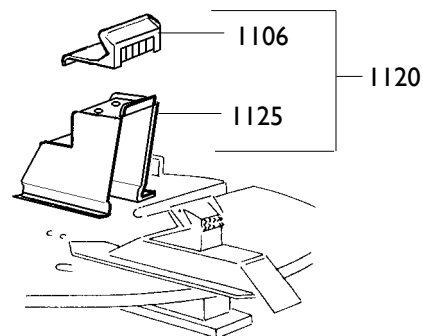
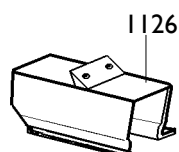
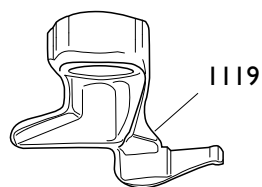
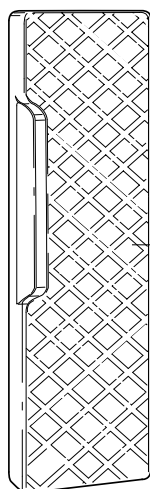
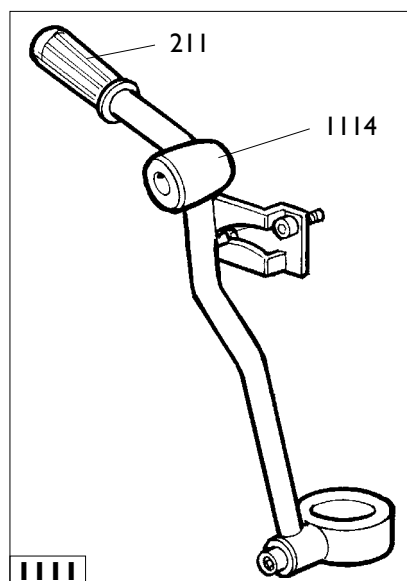


9801	5-102650	RIDUTTORE	GEAR BOX	GETRIEBE	REDUCTEUR
9801	5-102651	RIDUTTORE pneum.	GEAR BOX	GETRIEBE	REDUCTEUR
0754	319073	PULEGGIA (pneum.)	PULLEY	RIEMENSCHIEBE	POULIE
0754	314344	PULEGGIA	PULLEY	RIEMENSCHIEBE	POULIE
0755	2-01046	VITE M10X55	SCREW		
0756	2-00213	RONDELLA M10	WASHER		



	A 9824 TI	Fig. M	03A / 03	Gruppo filtro
--	------------------	---------------	-----------------	----------------------

0901	335695	STAFFA	BRACKET	KLAUE	ETRIER
0903	3-00001	RACCORDO	CONNECTOR	ANSCHLUSS	RACCORD
9902	456522	FILTRO	FILTER	FILTER	FILTRE
1037	457511	BICCHIERE LUBRIF.	BOWL	GLAS	BOL
1038	457512	BICCHIERE FILTRO	BOWL	GLAS	BOL
0914	3-00257	GIUNTO	CUOPLING	KUPPLUNG	ACCOUPLEMENT
0126	3-00488	MANOMETRO	PRESSURE GAUGE	DRUCKMESSER	MANOMETRE
0235	3-00221	RACCORDO	CONNECTOR	ANSCHLUSS	RACCORD

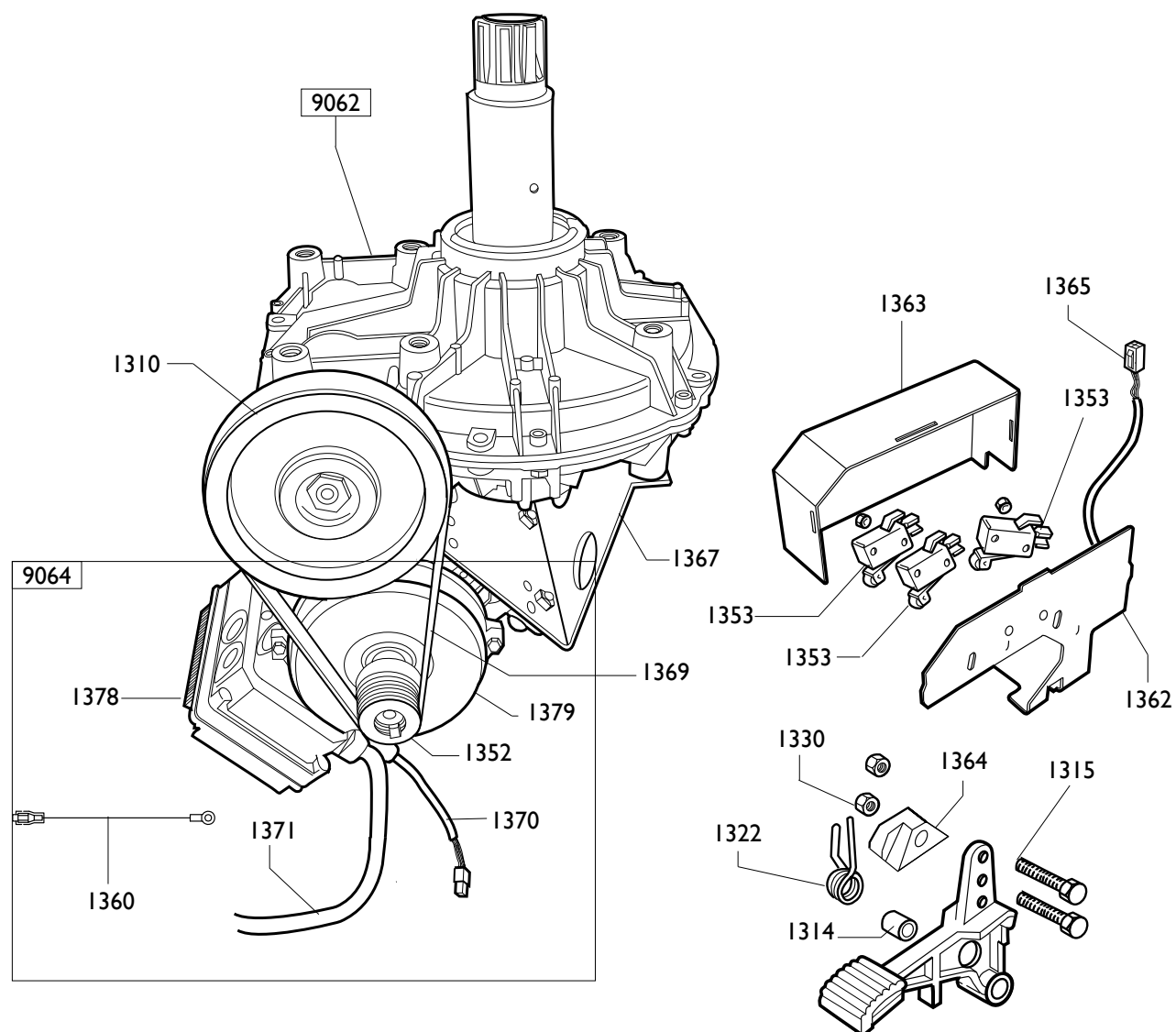


	A 9824 T.I.	Fig. N	01 / 10	Accessories
--	--------------------	---------------	----------------	--------------------

1102	4-108275	LEVA	LEVER	HEBEL	LEVIER
1106	435202	CUNEO	WEDGE	KEIL	COIN
1108	801435685	PINZA	PLIERS	ZANGE	PINCE
1109	8-11100104	KIT 6 PROT.LEVA	SHIELD	ABDECKUNG	PROTECTION
1115	8-11100105	KIT 6 PROT.PALETТА	SHIELD	ABDECKUNG	PROTECTION
1117	8-11100108	KIT 12 PROT.CUNEO	SHIELD	ABDECKUNG	PROTECTION
1118	801458663	PROTEZIONE	SHIELD	ABDECKUNG	PROTECTION
1119	801252083	TORRETTA 8"	M/D HEAD	DREHKOPF	TOURELLE
1120	801258650	KIT 4 ATTACCHI MOTO	ADAPTOR	HALTERUNG	ATTAQUE
1121	801260402	STALLONATORE	BEAD BREAKER	WULSTABDRUECKER	DEBALLONEUR
1123	8-11100107	KIT 5 PASTIGLIE	INSERT	EINLAGE	INSERT
1124	8-11100106	KIT 10 INSERTI	INSERT	EINLAGE	INSERT
1125	258649	BLOCCAGGIO	LOCKING	SPERRE	BLOCAGE
1126	801263517	KIT 4 ATTACCHI MOTO 8"-24"			

1111	801242834	LEVA premitallone	LEVER	HEBEL	LEVIER
0211	425219	MANOPOLA	KNOB	BALLENGRIFF	BOUTON
1114	440600	TESTINA	HEAD	KOPF	TETE

1112	801250309	KIT torretta plastica	Plastic m/d head	Kunststoffmontag.	Tour.plastique
1113	450310	Torretta plastica	Plastic m/d head	Kunststoffmontagekopf	Tourelle plastique



MOTORE+INV 2 CONDENSATORI				MOTOR+REV.	
9064	5-104986	200-230V 1ph	200-230V 1ph	200-230V 1ph	200-230V 1ph
1378	4-115396	SCHEDA ELETTR. 230V	P.C.BOARD	ELEKTR.PLATINE	FICHE ELECTR.
1352	4-102397	PULEGGIA	PULLEY	RIEMENSCHIEBE	POULIE
1370	4-109895	CAVO COMANDI 230V	CABLE		
1379	4-113412	MOTORE(SENZA SCHEDA)200-230/1/50-60HZ	MOTOR		
1360	4-101659	CAVO TERRA	CABLE		
1371	4-111586	CAVO RETE	CABLE		

		MOTORE+INV	MOTOR+REV.	MOTOR+RICHTUNGSW.	MOTEUR+INV.
9064	5-104995	115V 1ph	115V 1ph	115V 1ph	115V 1ph
1371	4-111586	CAVO RETE	CABLE	KABEL	CABLE
1378	4-113414	SCHEDA ELETTR. 115V	P.C.BOARD	ELEKTR.PLATINE	FICHE ELECTR.
1352	4-102397	PULEGGIA	PULLEY	RIEMENSCHIEBE	POULIE
1360	4-101659	CAVO TERRA	CABLE		
1370	4-109895	CAVO COMANDI 115V	CABLE		
1379	4-113412	MOTOINVERTER 115V	MOTOINVERTER 115V		

9062	5-101783	RIDUTTORE	GEAR BOX	GETRIEBE	REDUCTEUR
1310	339870	PULEGGIA	PULLEY	RIEMENSCHIEBE	POULIE

1315	5-102714	PEDALE	PEDAL	PEDAL	PEDALE
1314	325050	DISTANZIALE	SPACER	ABSTANDSSTUECK	ENTRETOISE
1322	4-109664	MOLLA	SPRING	FEDER	RESSORT
1353	440874	MICROINTERUTORE	MICROSWITCH	MIKROSCHALTER	MICROINTERRUPT.
1330	346008	BOCCOLA	BUSHING	LAGER	DOUILLE
1362	4-102401	SUPPORTO MICRO	SUPPORT		
1363	4-102402	COPERCHIO	CASING		
1364	461535	SUPPORTO MICRO	SUPPORT		
1365	4-101693	CAVO COMANDI PEDALIERA		CABLE	
1367	4-109965	CULLA MOTORE 230/115V		SUPPORT	
1369	3-00573	CINGHIA	BELT		

Il disegno è realizzato con tutti i particolari ma solo quelli codificati sono forniti come ricambi. L'Azienda si riserva la facoltà di apportare modifiche senza preavviso.



Via per Carpi, n°9 - 42015 Correggio (RE) ITALY
Tel. ++39 0522 639111 - Fax ++39 0522 639150
www.corgi.com - info@corgi.com

The drawing shows all parts but only the coded parts are supplied as spares. The Company reserves the right to make modifications without prior notice.

UTB - Cod. 4-I03962C - 09_2012