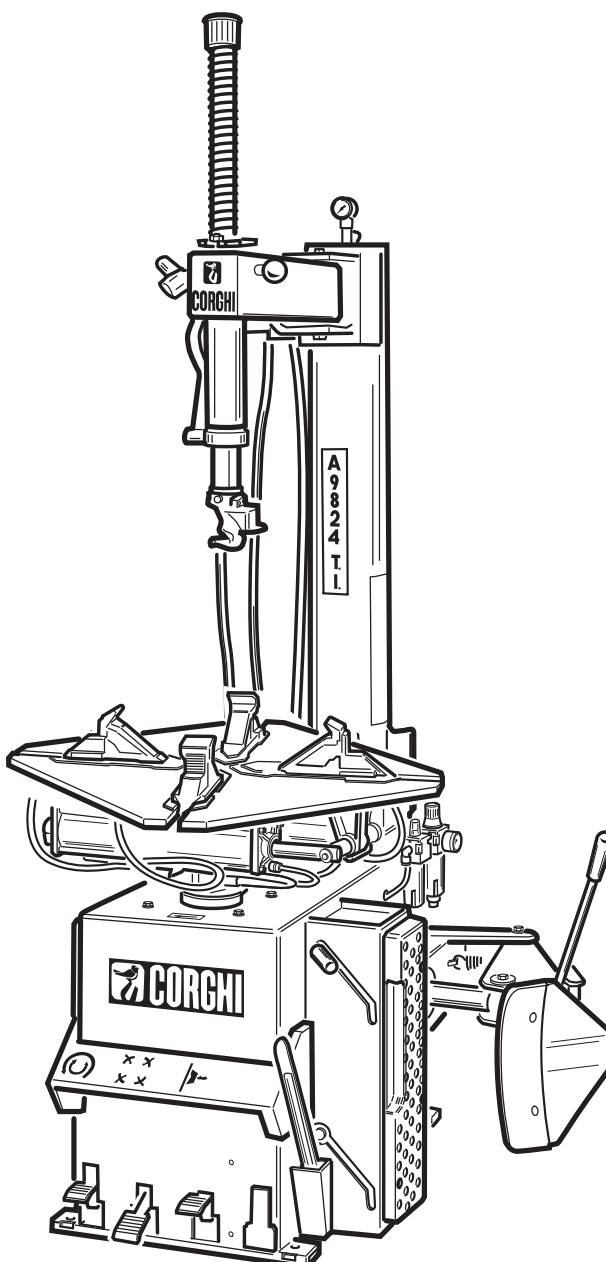


Questo libretto non autorizza l'utente ad intervenire sulle macchine ad esclusione di quanto esplicitamente descritto nel Manuale d'uso, ma consente all'utente di fornire informazioni precise all'Assistenza tecnica, al fine di ridurre i tempi di intervento.

A 9824

The "Spare parts" booklet does not authorize the user to carry out work on the machine unless expressly specified in the instruction manual, but does enable him to provide accurate information to the assistance service in order to reduce downtime.

PEZZI DI RICAMBIO SPARE PARTS LIST ERSATZTEILLISTE PIECES DE RECHANGE



Code

4-I03962D

Production from

04 / 2013

Der Katalog Ersatzteile stellt keine Genehmigung zu eigenmächtigen Eingriffen dar (mit Ausnahme jener im Handbuch beschrieben), sondern er soll den Anwender in die Lage versetzen, dem technischen Service präzise Informationen zu liefern, um die Reparaturzeiten zu verkürzen.



Le livret "Pièces de rechange", n'autorise pas l'utilisateur à intervenir sur les machines, sauf pour tout ce qui est clairement décrit dans le manuel d'utilisation, mais lui permet de fournir des informations précises à l'assistance technique, afin de diminuer les délais d'intervention.

I

Sul presente documento sono stati indicati in grassetto i codici che sono variati rispetto a quelli riportati nella precedente versione del 09/12

En

Codes that have changed from those given in the previous version dated 09/12 are indicated in bold type in this document

De

Die gegenüber der Vorgängerversion vom 09/12 geänderten Codes sind im vorliegenden Dokument fettgedruckt angegeben

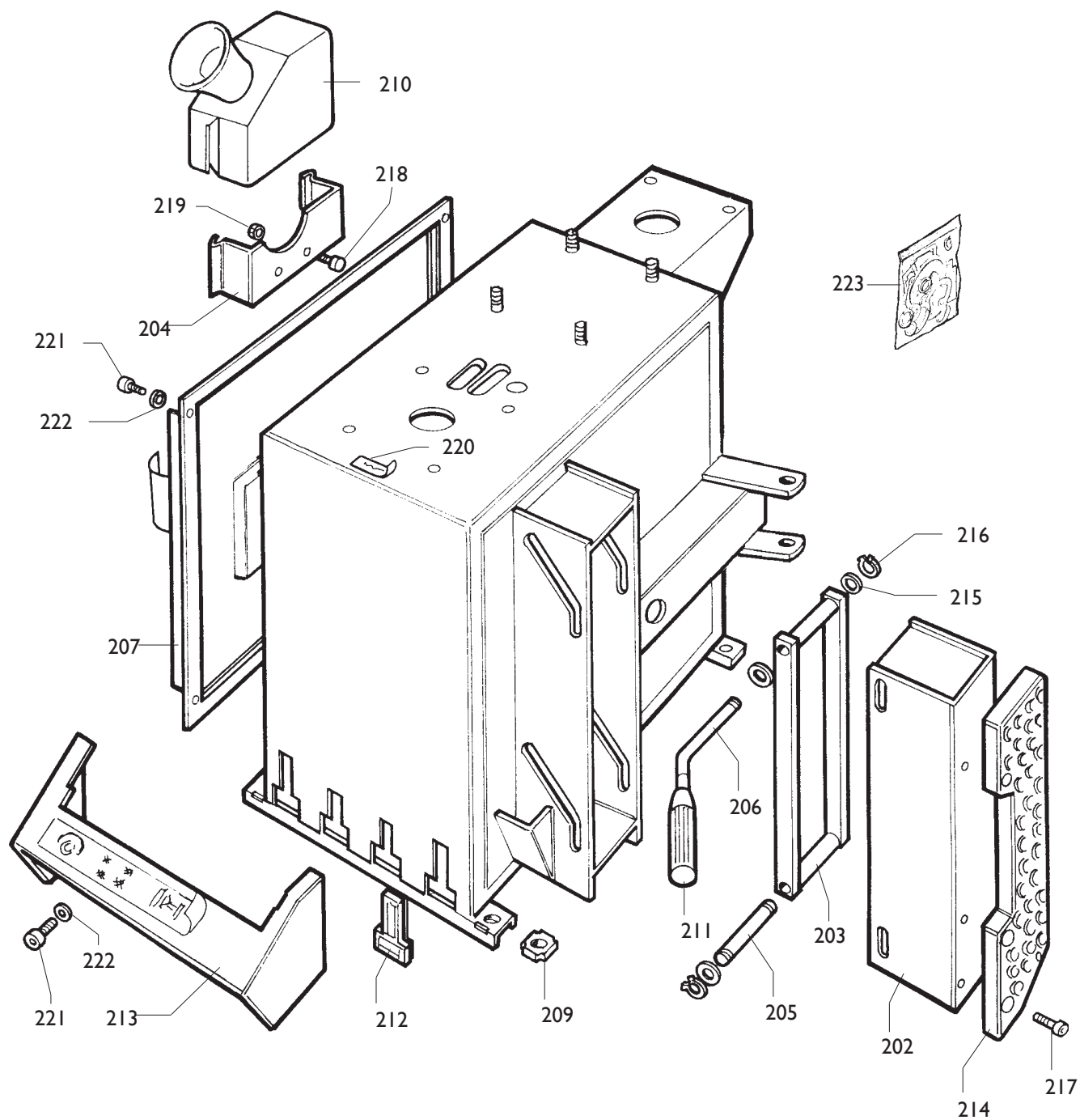
Fr


Ce document reporte en gras les codes qui ont été modifiés par rapport à ceux reportés dans la version précédente du mois de 09/12



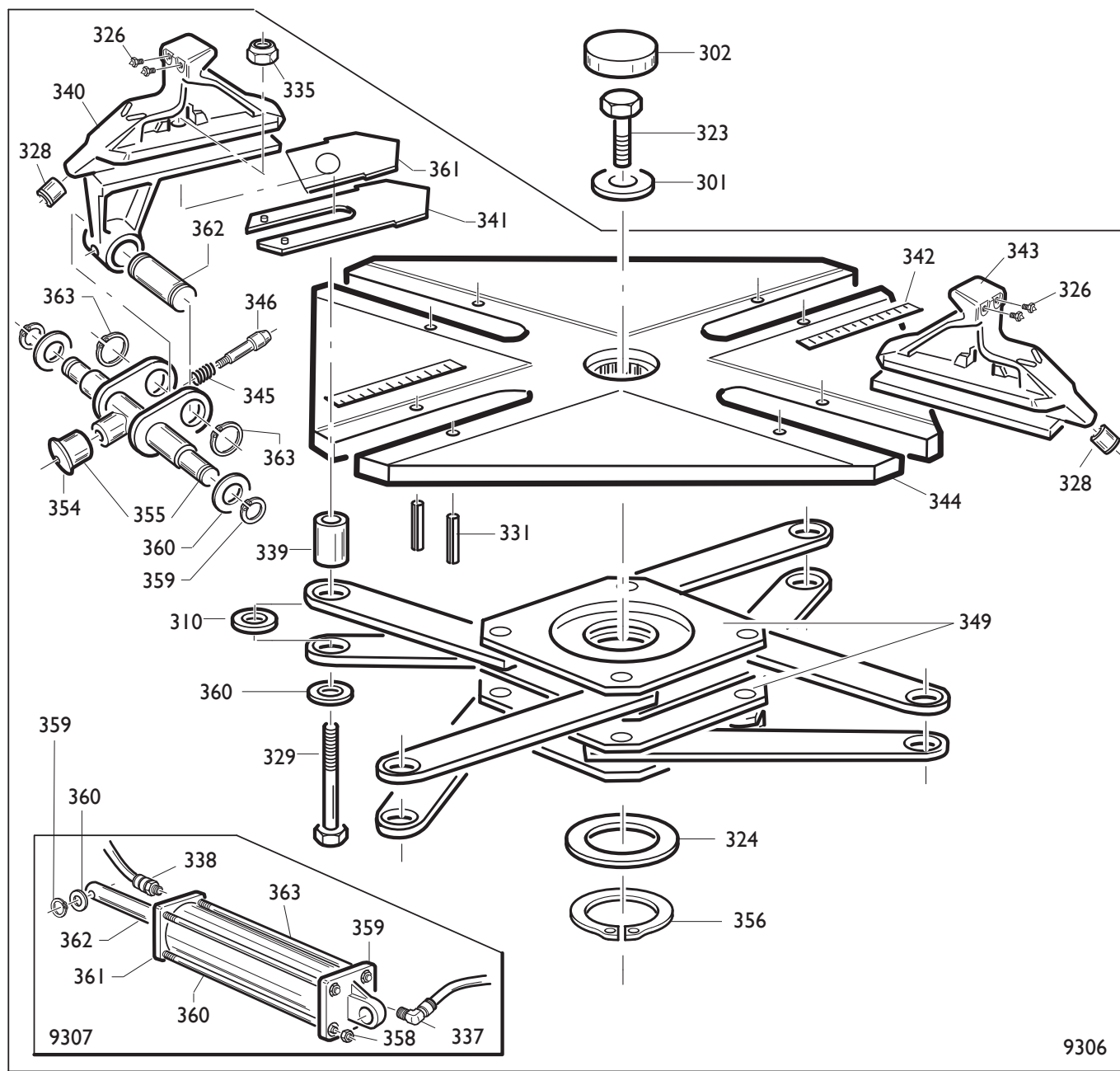
	A 9824 TI	Fig. A	03A / 03	Braccio operante
--	------------------	---------------	-----------------	-------------------------

0103	318216	RONDELLA	WASHER
0104	323881	PERNO	PIN
0105	429971	COPERCHIO	LID
0106	238779	BRACCIO	ARM
0107	223877	ECCENTRICO	ECCENTRIC
0108	340343	BRACCIO	ARM
0109	341001	BLOCCAGGIO	LOCKING
0110	341249	VITE	SCREW
0111	423889	POMOLO	KNOB
0113	428681	ANELLO	RING
0114	440341	MOLLA	SPRING
0115	2-00025	ANELLO	RING
0118	2-01019	DADO	NUT
0119	2-01225	VITE	SCREW
0120	2-00152	DADO	NUT
0121	2-00153	DADO	NUT
0122	2-00382	VITE	SCREW
0123	441580	MANOPOLA	KNOB
0130	338808	SUPPORTO	SUPPORT
0132	2-01312	VITE	SCREW
0133	346273	DISTANZIALE	SPACER
0134	258458	TORRETTA	MOUNT/DEMOUNT HEAD
0135	5-101130	PALO	SHAFT
0136	423907	POMOLO	HANDLE
0137	2-00213	RONDELLA M10	WASHER
0138	350194	VITE	SCREW
0139	350197	VITE	SCREW
0140	2-71357	VITE M12	SCREW
0141	2-01275	DADO M10	NUT
0143	441631	RODELLA	WASHER
0144	2-00381	VITE M10X35	SCREW
9050	241608	GR.MANOMETRO	PRESSURE GAUGE KIT
0124	3-00271	NIPPLO	CONNECTION
0125	3-00356	VALVOLA	VALVE
0126	3-00488	MANOMETRO	PRESSURE GAUGE
0127	3-00131	RACCORDO	CONNECTOR
0128	3-00138	RACCORDO	CONNECTOR



	A 9824 TI	Fig. B	05B / 09	Cassone.
--	------------------	---------------	-----------------	-----------------

0202	238911	PROLUNGA APPOGGIO	EXTENSION CORD
0203	239050	BIELLA	TRACE
0204	315522	SUPPORTO	SUPPORT
0205	339046	PERNO BIELLA	PIN
0206	339456	PERNO MANIGLIA	PIN
0207	341176	COFANO	HOOD
0209	422019	PIEDE	FOOT
0210	423405	CONTENITORE	CONTAINER
0211	425219	MANOPOLA	KNOB
0212	429006	TAPPO	SHIELD
0213	429976	PROTEZIONE	SHIELD
0214	436199	APPOGGIO	RIM SUPPORT
0215	2-00215	RONDELLA	WASHER
0216	2-01122	ANELLO	RING
0217	2-01885	VITE	SCREW
0218	2-01223	VITE M6X16	SCREW
0219	2-00127	DADO M6	NUT
0220	418135	ADESIVO ROTAZIONE	LABEL
0221	2-00310	VITE M6X20	SCREW
0222	2-00211	RONDELLA D.6	WASHER
0223	5-104791	KIT ADESIVI A9824 TI	LABEL KIT A9824 TI



	A 9824 TI	Fig. C	04 / 12	Autocentrante T.I. 10÷24"
--	------------------	---------------	----------------	--------------------------------------

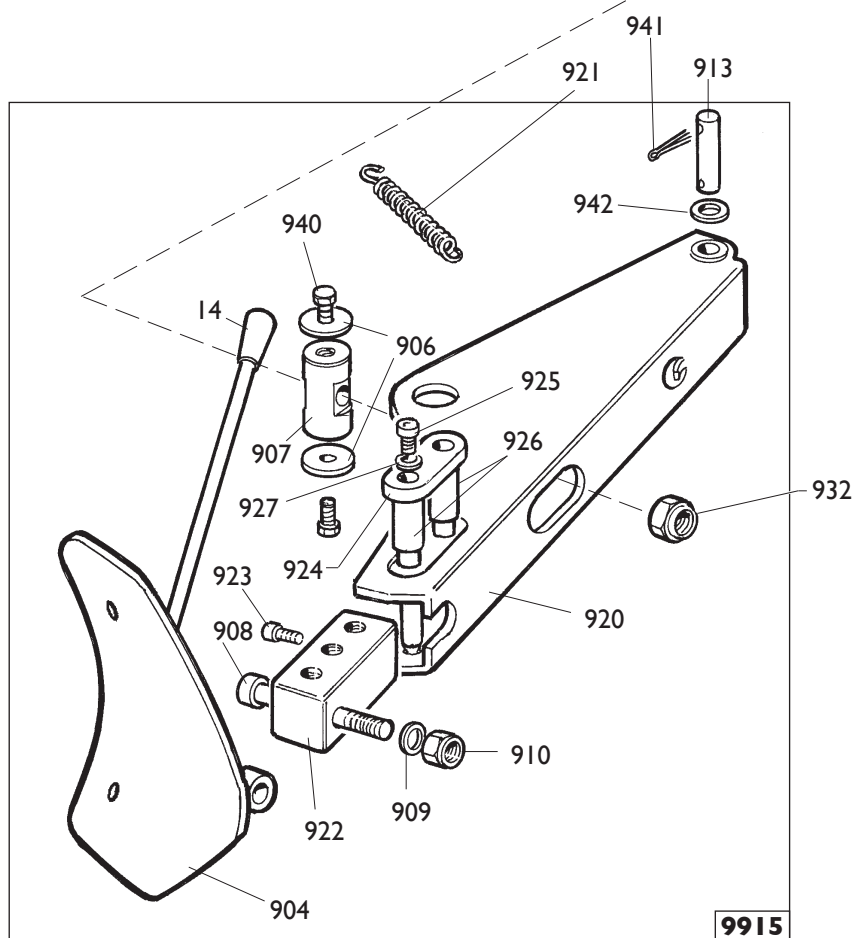
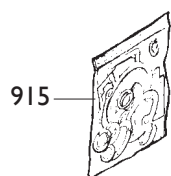
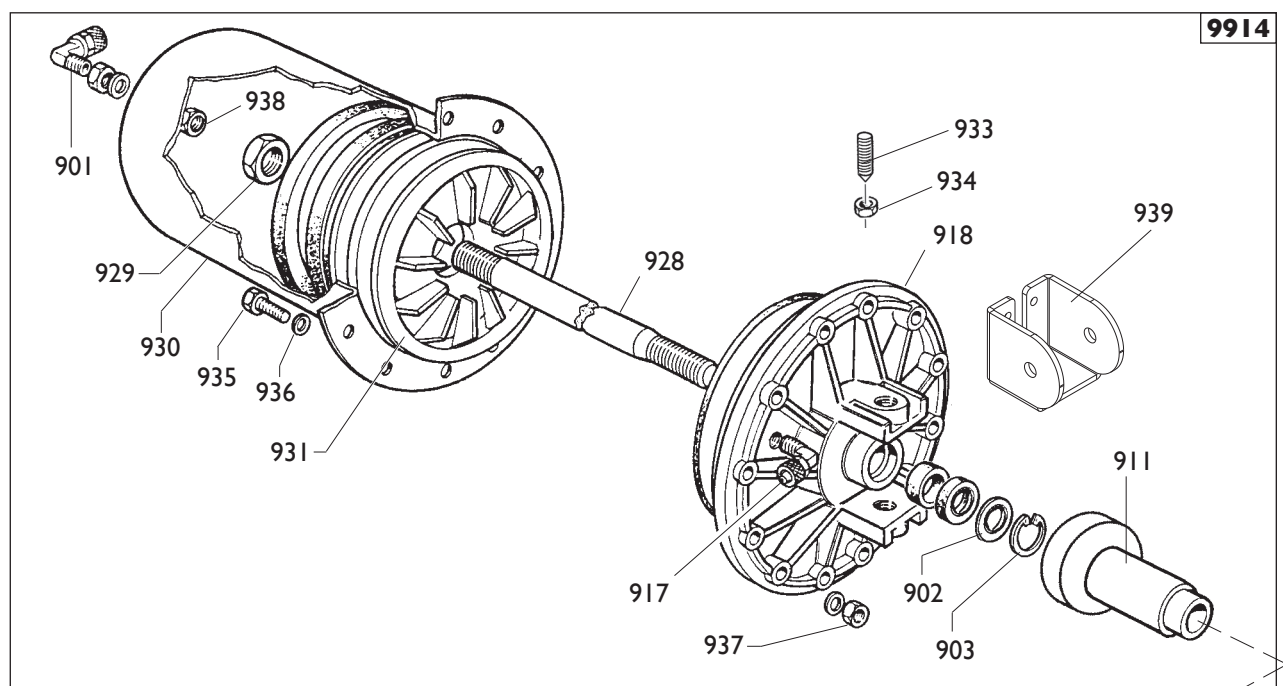
0300	238548	KIT GUARNIZIONI	SEALS KIT
0301	323363	RONDELLA	WASHER
0302	426514	TAPPO	PLUG
0323	2-01216	VITE	SCREW

9306	5-100461	AUTOCENTRANTE T.I.	TURNTABLE T.I.
0310	437964	RONDELLA	WASHER
0324	455082	RONDELLA	WASHER
0326	339146	PUNTE DI BLOCC.	LOCKING PEAK
0328	441100	RACCORDO T.I.	CONNECTOR T.I.
0329	2-02199	VITE	SCREW
0331	2-01059	SPINA	PLUG
0335	2-02200	DADO	NUT
0339	353803	BOCCOLA	BUSHING
0340	5-100460	APPOGGIO T.I. TRAINANTE	RIM SUPPORT T.I.
0341	4-101441	COPRIASOLA	COVER
0342	4-101456	TARGHETTA	DATA PLATE
0343	5-100459	APPOGGIO T.I. TRAINATO	RIM SUPPORT T.I.
0344	4-101438	PIATTO	PLATE
0345	4-101422	MOLLA	SPRING
0346	4-101444	INNESTO	PIN
0354	4-109384	POMOLO	KNOB
0355	5-103522	KIT MANOVELLE+POMOLI (2 PZ)	CRANK
0349	4-101651	FLANGIA	FLANGE
0356	2-01283	SEEGER D.65	SEEGER
0359	2-00025	SEEGER D.12	SEEGER
0360	2-00214	RONDELLA D.12	WASHER
0361	4-101453	SLITTA	COVER
0362	4-101442	PERNO	PIN
0363	2-71587	SEEGER D.20	SEEGER

9307	5-100455	CILINDRO DESTRO	CYLINDER RIGHT
9307	5-100454	CILINDRO SINISTRO	CYLINDER LEFT
0337	3-02044	RACCORDO	CONNECTOR
0338	3-02045	RACCORDO	CONNECTOR
0359	4-115948	FLANGIA POST.	FLANGE
0360	4-115951	CAMICIA	LINER
0361	5-105111	FLANGIA ANT.	FLANGE
0362	4-115959	STELO	ROD
0363	4-115949	TIRANTE	PIN
0358	2-01137	DADO M8	NUT



		A 9824 TI	Fig. D	04 / 13	Sistema di gonfiaggio
Ø6	I-01684	TUBO			PIPE
Ø8	I-01683	TUBO			PIPE
0223	252625	PEDALE			PEDAL
0224	346266	TUBO			PIPE
0225	342289	TUBO Ø10			PIPE
0245	I-04223	TUBO			PIPE
0230	241841	RACCORDO GIREVOLE T.I.			CONNECTOR
0262	3-00117	RACCORDO			CONNECTOR
9202	242290	VALVOLA DI SPARO			VALVE FIRING CPL
0226	3-00403	CARTUCCE			CARTRIDGE
0227	3-00287	RACCORDO			CONNECTOR
0228	243020	VALVOLA DI SPARO			VALVE FIRING
0243	3-00051	RACCORDO			CONNECTOR
0251	342286	STAFFA			BRACKET
0252	2-94066	VITE			SCREW
9201	252568	GRUPPO gonfiaggio			GROUP INFLATION
9204	5-105676	GRUPPO gonfiaggio			GROUP INFLATION
9205	5-105674	VALVOLA GONF. + STAFFA			VALVE WITH PLATE
0232	235463	VALVOLA DI SGONFIAGGIO			VALVE
0233	3-00365	VALVOLA			VALVE
0234	3-00389	VALVOLA DI GONFIAGGIO			VALVE
0235	3-00221	RACCORDO			CONNECTOR
0236	3-00138	RACCORDO			CONNECTION
0237	3-00004	INNESTO			CLUTCH
0238	352614	TUBO L.1900mm			PIPE
0245	338576	DISTANZIALE			SPACER
0246	3-00135	NIPPLO			CONNECTION
0247	452624	ANTIVIBRANTE			ANTISHOCK
0253	3-00460	RACCORDO D.6			CONNECTION D.6
0255	352619	CAPPELOTTO			CUP
0256	352698	SUPPORTO VALVOLA			SUPPORT
0258	2-00295	VITE M4X8			SCREW
0259	2-00209	RONDELLA D.4			WASHER
0260	2-00320	VITE M8			SCREW
0261	2-00212	RONDELLA			WASHER
0265	2-00289	VITE M4X10			SCREW
0266	3-00464	RACCORDO D.8			CONNECTOR D.8
0267	4-117416	SUPPORTO			SUPPORT
0268	2-00851	VITE M4X40			SCREW
0269	2-02804	DADO M4			NUT
0270	3-00478	RACCORDO D.8			CONNECTOR D.8
9203	252600	SCATOLA			BOX
0232	235463	VALVOLA			VALVE
0238	352614	TUBO L.1900mm			PIPE
0239	262971	TUBO			PIPE
0240	3-00489	MANOMETRO			PRESSURE GAUGE
0241	3-00103	RACCORDO			CONNECTOR
0244	3-00007	INNESTO			CLUTCH
0248	353537	SUPPORTO MANOMETRO			SUPPORT
0249	325035	TUBO D.6 L.180			PIPE
0250	2-71485	VITE M3,9X13			SCREW
0257	234171	SCATOLA MANOMETRO			PRESSURE GAUGE BOX
0263	3-00460	RACCORDO			CONNECTOR
0264	403571	FASCETTA			CONNECTOR



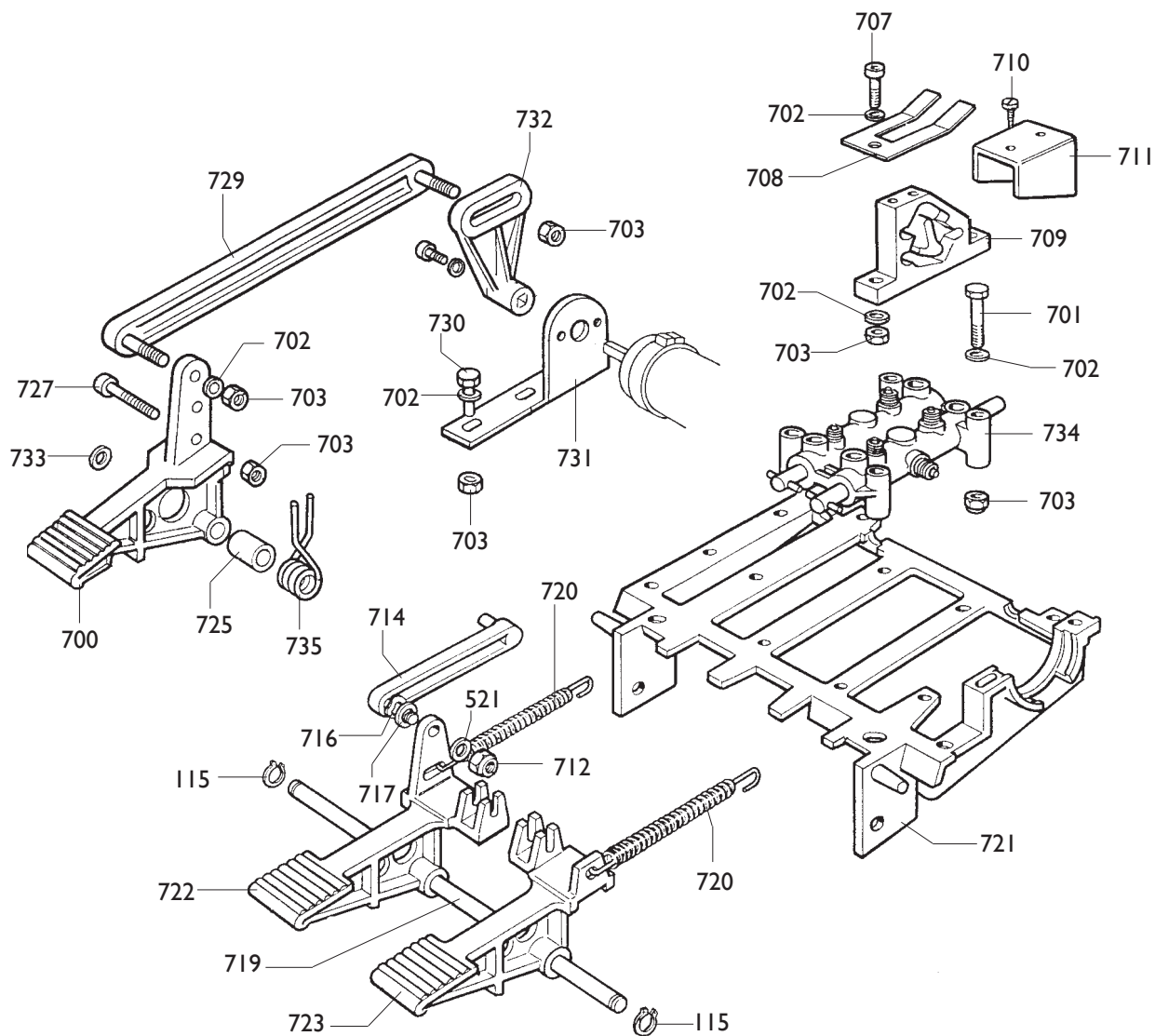
	A 9824 TI	Fig. E	05A / 04	Stallonatore
--	------------------	---------------	-----------------	---------------------

9914	5-100484	CILINDRO	CYLINDER
0901	3-00517	RACCORDO	CONNECTOR
0902	325561	RONDELLA	WASHER
0903	434031	ANELLO	RING
0917	3-001222	RACCORDO	CONNECTOR
0918	351905	FLANGIA	FLANGE
0935	2-00310	VITE M6x20	SCREW
0936	2-00211	RONDELLA D.6	WASHER
0937	436779	DADO M6	NUT
0938	333524	DADO 1/4	NUT

9915	245743	BRACCIO	ARM
0014	425219	MANIGLIA	HANDLE
0904	224000	PALETTA	BEAD BREAKER
0906	323901	RONDELLA	WASHER
0907	339045	PERNO	PIN
0908	324008	VITE M12x90	SCREW
0909	2-02249	RONDELLA	WASHER
0910	422255	DADO	NUT
0920	245701	BRACCIO	ARM
0922	345618	BLOCCHETTO	BLOCK
0923	2-00308	VITE	SCREW
0924	345616	FERMO	RETAINER
0925	2-00372	VITE	SCREW
0926	345617	PUNTE	LOCKING
0927	2-01299	RONDELLA	WASHER

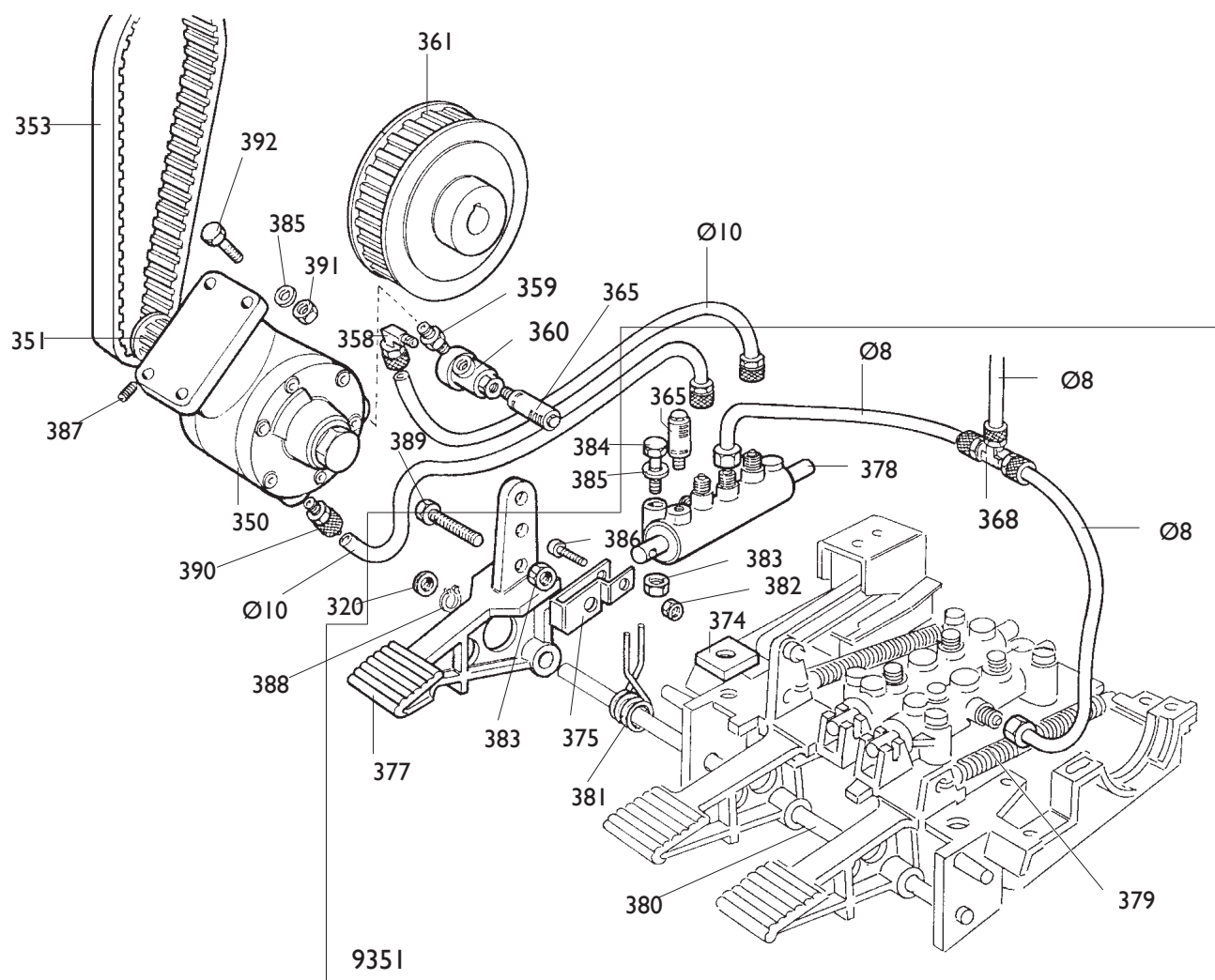
0911	239061	TAMPONE	PAD
0913	323903	FULCRO	FULCRUM
0915	238212	KIT GUARNIZIONI	SEALS KIT
0921	4-101930	MOLLA	SPRING
0928	4-101628	STELO	SHAFT
0929	2-00989	DAMO M18	NUT
0930	330190	CILINDRO	CYLINDER
0931	337848	PISTONE	PISTON
0932	2-01242	DADO M18	NUT
0933	431864	VITE	SCREW
0934	2-00992	DADO M14	NUT
0939	4-101742	SUPPORTO BRACCIO	ARM SUPPORT
0940	3-00372	VITE	SCREW
0941	435055	MOLLA D.2X10	SPRING
0942	2-01045	RONDELLA D.16	WASHER

9701



	A 9824 TI	Fig. F	03A / 03	Pedaliera
--	------------------	---------------	-----------------	------------------

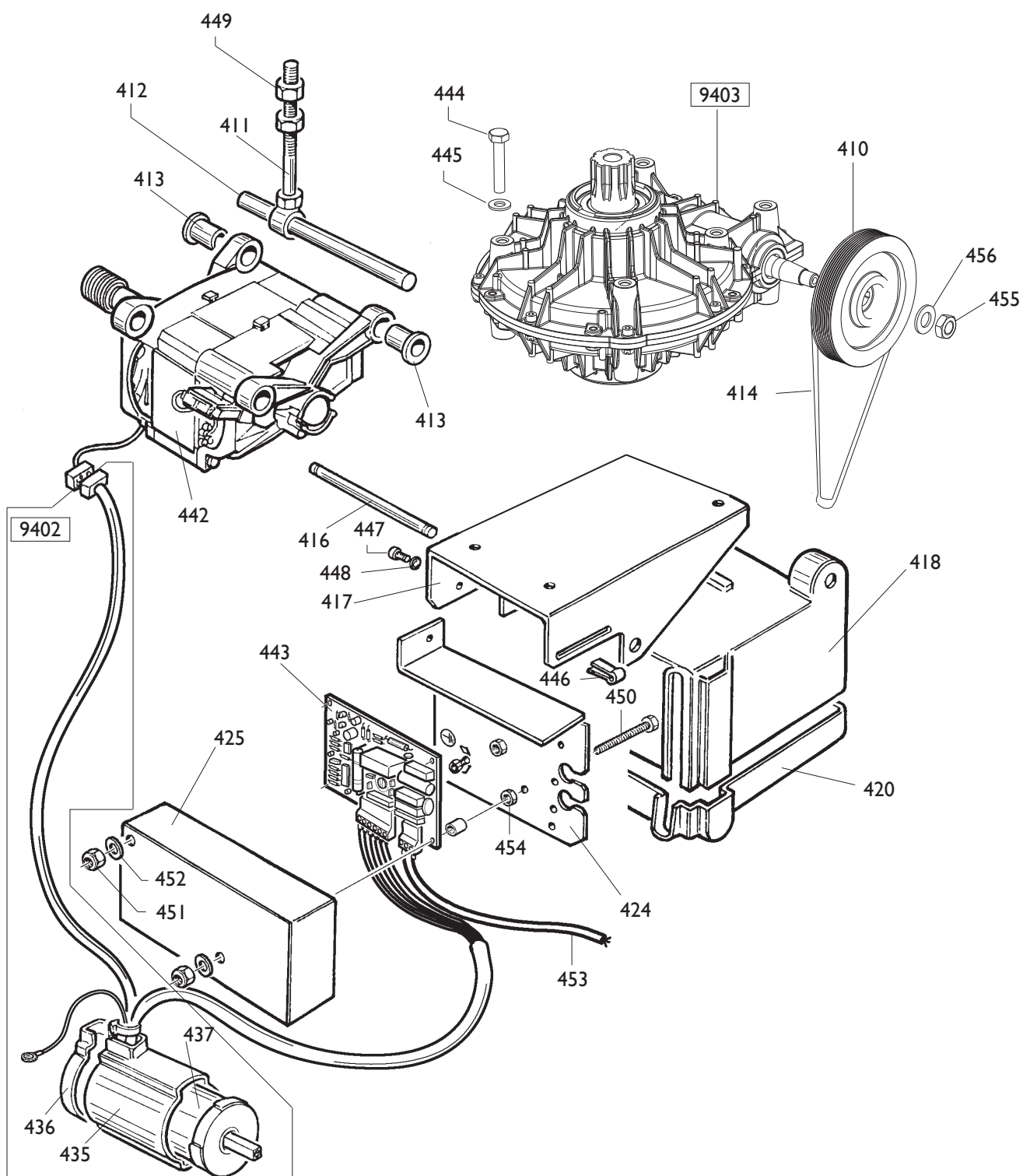
9701	241201	PEDALIERA	CONTROL PEDAL
9701	5-101614	PEDALIERA MOTOINVERTER	MOTOINVERTER CONTROL PEDAL
0115	2-00025	ANELLO	RING
0521	2-00212	RONDELLA	WASHER
0700	5-102714	PEDALE INVERTITORE	PEDAL
0701	2-00411	VITE	SCREW
0702	2-00211	RONDELLA	WASHER
0703	2-01979	DADO	NUT
0707	2-00312	VITE	SCREW
0708	325019	BALESTRA	LEAF SPRING
0709	425020	CAMMA	CAM
0710	2-01272	VITE	SCREW
0711	325018	CAVALLOTTO	U-BOLT
0712	2-01137	DADO	NUT
0714	425014	BIELLA	TRACE
0716	2-02247	RONDELLA	WASHER
0717	309358	RONDELLA	WASHER
0719	325583	PERNO	PIN
0720	410628	MOLLA	SPRING
0721	524273	SUPPORTO	SUPPORT
0722	325031	PEDALE AUTOCENT.	PEDAL
0723	325032	PEDALE STALLON.	PEDAL
0725	325050	DISTANZIALE	SPACER
0727	2-00366	VITE	SCREW
0729	429009	BIELLA INVERT.	TRACE
0730	2-00362	VITE	SCREW
0731	334758	SUPPORTO	SUPPORT
0732	404283	LEVA	LEVER
0733	452011	BOCCOLA	BUSHING
0734	5-102739	RUBINETTO DOPPIO	COCK
0735	4-109664	MOLLA	SPRING



	A 9824 TI	Fig. G	03A / 03	Pedaliere pneumatica
--	------------------	---------------	-----------------	-----------------------------

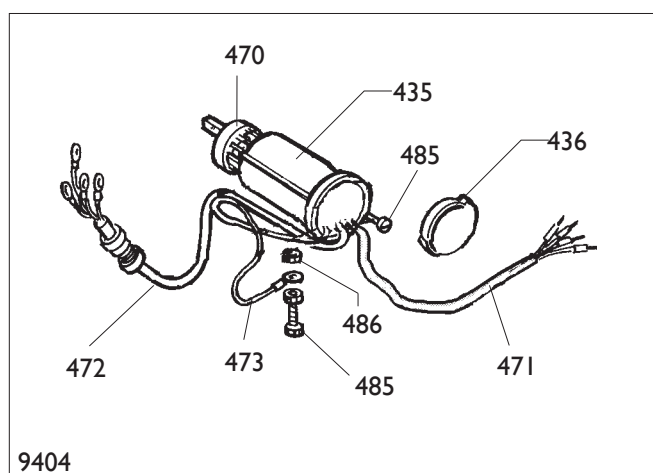
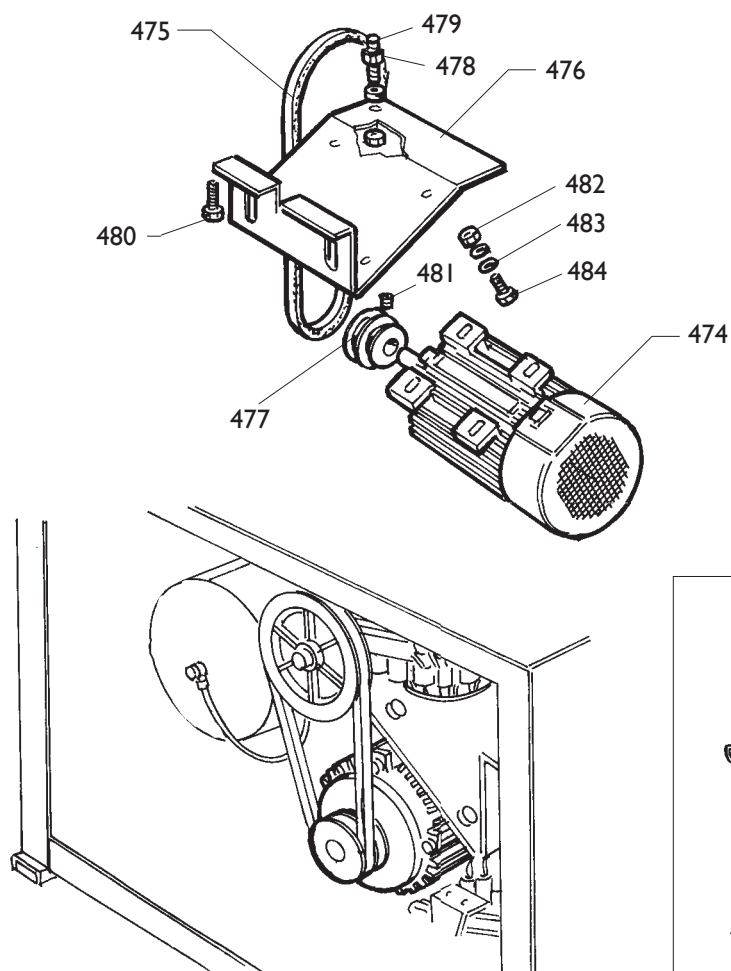
Ø8	1-01683	TUBO	PIPE
Ø10	1-01875	TUBO	PIPE
0350	319135	MOTORE	MOTOR
0351	319076	PULEGGIA	PULLEY
0353	3-00585	CINGHIA	BELT
0358	3-00109	RACCORDO	CONNECTOR
0359	3-00141	NIPPLO	CONNECTION
0360	3-00316	VALVOLA	VALVE
0361	319073	PULEGGIA	PULLEY
0387	2-00801	VITE M 6X6	SCREW M 6X6
0390	3-00040	RACCORDO	CONNECTOR
0391	422288	DADO	NUT
0392	2-00363	VITE M 6X25	SCREW M 6X25

9351	270526	PEDALIERA	CONTROL PEDAL
0320	452011	BOCCOLA	BUSHING
0365	3-00183	SILENZIATORE	SILENCER
0368	3-00112	RACCORDO	CONNECTOR
0374	329058	PIASTRINA	PLATE
0375	331381	BIELLA	TRACE
0377	252030	PEDALE	PEDAL
0378	5-102740	RUBINETTO	COCK
0379	410628	MOLLA	SPRING
0380	325583	PERNO	PIN
0381	4-109664	MOLLA	SPRING
0382	2-01018	DADO M 4	NUT M 4
0383	2-01979	DADO M 6	NUT M 6
0384	2-00411	VITE M 6X50	SCREW M 6X50
0385	2-00211	RONDELLA Ø 6	WASHER Ø 6
0386	2-00911	VITE M 4X25	SCREW M 4X25
0388	2-00025	ANELLO	RING
0389	2-00366	VITE M 6X40	SCREW M 6X40



	A 9824 T.I.	Fig. H	03A / 03	Electric system with gear box
--	--------------------	---------------	-----------------	--------------------------------------

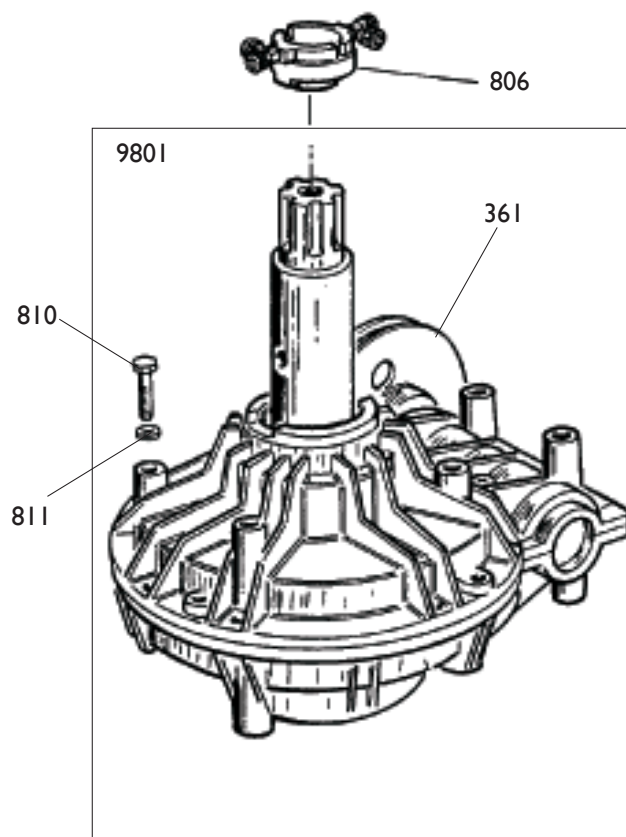
9403	5-102652	RIDUTTORE	GEAR BOX
0410	354082	PULEGGIA	PULLEY
0411	5-100519	TIRANTE	STAY ROD
0412	340367	PERNO	PIN
0413	440365	BOCCOLA	BUSHING
0414	3-00575	CINGHIA	BELT
0416	346012	PERNO	PIN
0417	346017	SUPPORTO	SUPPORT
0418	462572	COPERCHIO SUP.	LID
0420	462571	COPERCHIO INF.	LID
0424	349299	SUPPORTO	SUPPORT
0425	462573	COPERCHIO SK	LID
0442	462139	MOTORE 110V	MOTOR
0443	462138	SK ELETTRON. 110V	P.C.BOARD
9402	262570	CAVO COLL.MOT.-INV.	CABLE
0435	432065	PROTEZIONE	SHIELD
0436	430991	COPERCHIO	LID
0437	5-102744	INVERTITORE	REVERSER
0444	2-01046	VITE M10X55	SCREW
0445	2-00213	RONDELLA M10	WASHER
0446	2-01984	FERMAGLIO	STOP
0447	2-00715	VITE M6X12	SCREW
0448	2-71544	RONDELLA D.6	WASHER
0449	2-91726	DADO M10	NUT
0450	2-91645	VITE M4X70	SCREW
0451	2-01018	DADO M4	NUT
0452	2-00209	RONDELLA D.4	WASHER
0453	247801	CAVO RETE	CABLE
0454	2-00143	DADO M4	NUT
0455	2-00941	DADO M14	NUT
0456	2-00215	RONDELLA M14	WASHER


IMPIANTO ELETTRICO

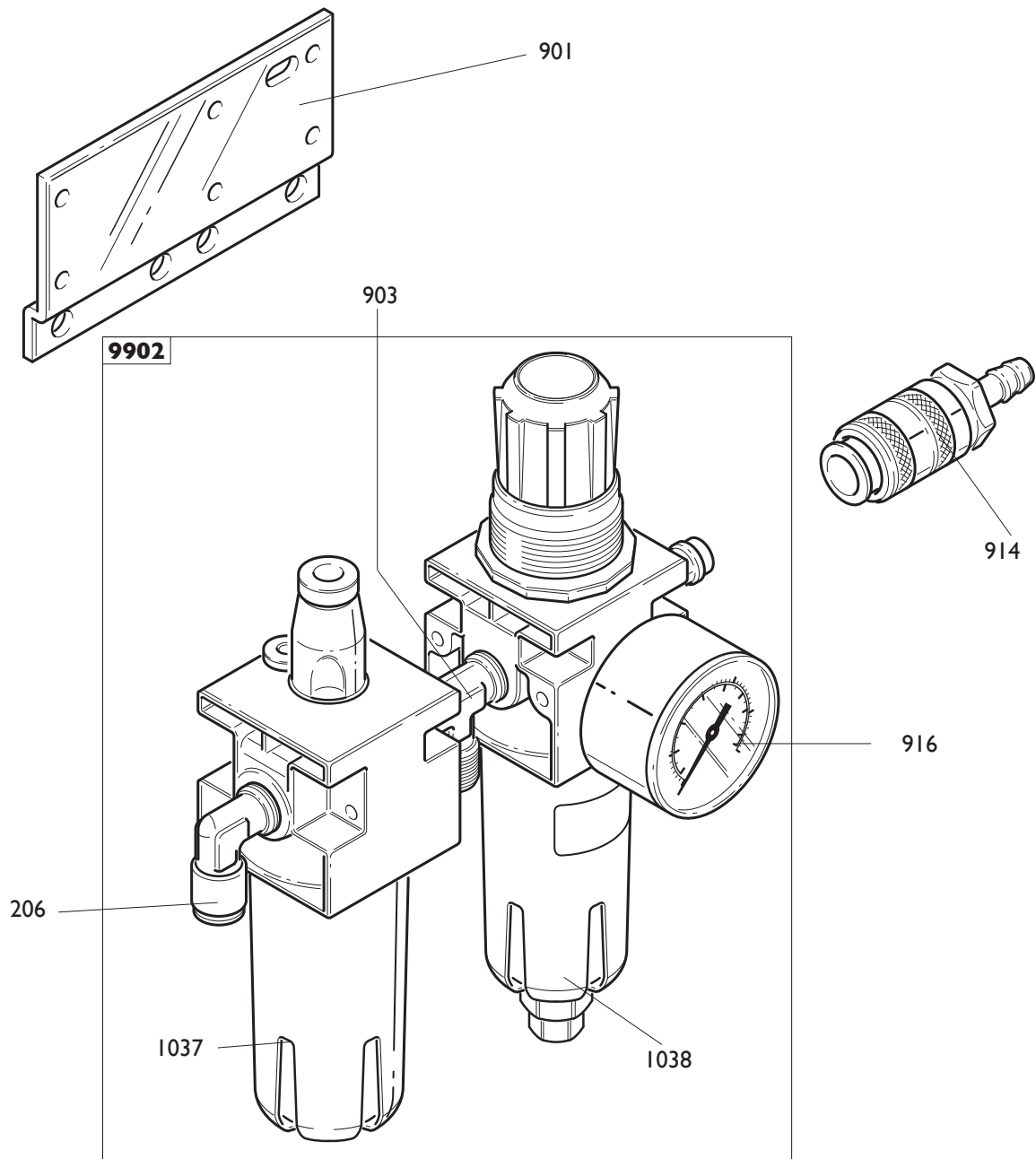
9404	235574	3ph
0470	5-102742	INVERTITORE
0471	235518	CAVO RETE
0472	225390	CAVO MOTORE
0473	225051	CAVALLOTTO
0485	2-00605	VITE M4X10
0486	2-00143	DADO M4
0435	432065	PROTEZIONE
0436	430991	COPERCHIO
0474	412959	MOTORE 3ph 400V
0475	3-00555	CINGHIA
0476	334768	CULLA
0477	325274	PULEGGIA
0478	2-00152	DADO M10
0479	455920	VITE SPEC.M10X60
0480	2-00328	VITE M10X20
0481	2-01091	VITE M6X5
0482	421349	DADO M8
0483	339208	RONDELLA M8
0484	2-00374	VITE M8X25

ELECTRIC SYSTEM

3ph
REVERSER
CABLE
CABLE
U-BOLT
SCREW
NUT
SHIELD
LID
MOTOR 3ph 400V
BELT
CRADLE
PULLEY
NUT
SCREW
SCREW
SCREW
NUT
WASHER
SCREW

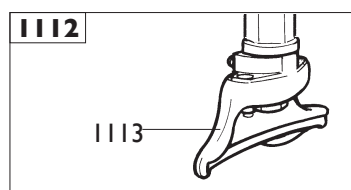
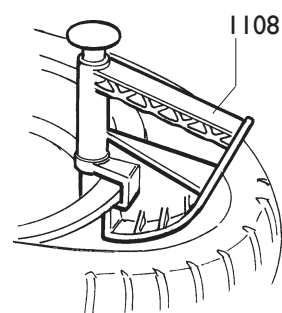
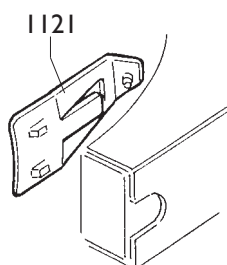
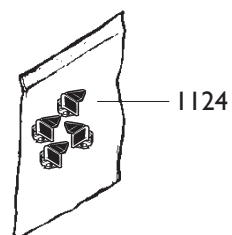
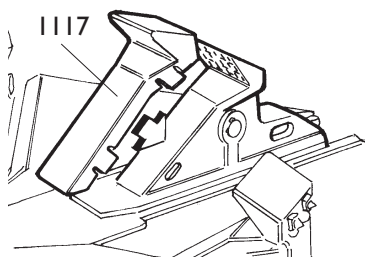
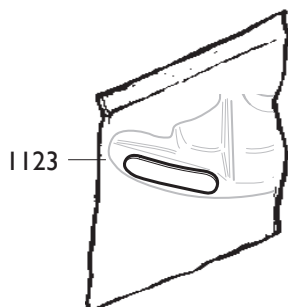
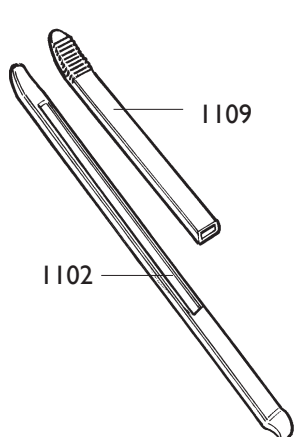
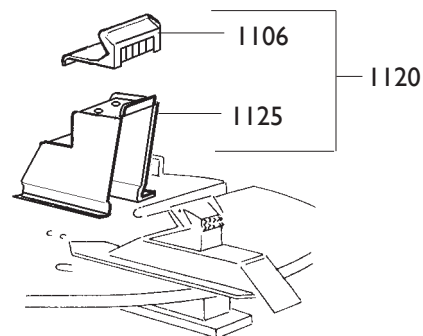
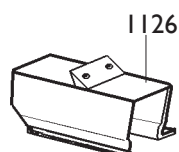
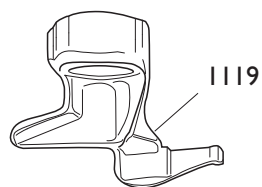
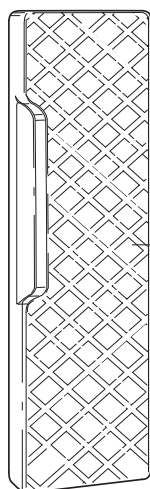
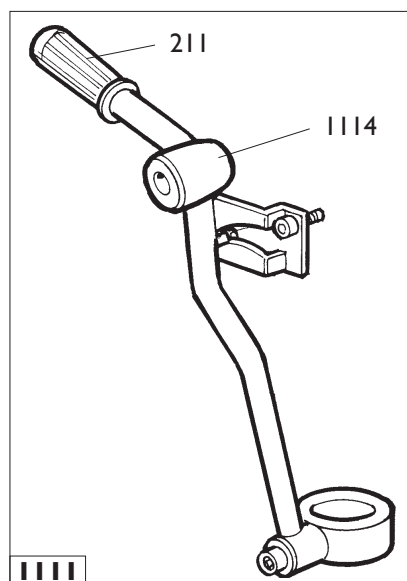


9801	5-102650	RIDUTTORE	GEAR BOX
9801	5-102651	RIDUTTORE pneum.	GEAR BOX
0361	319073	PULEGGIA (pneum.)	PULLEY
0361	314344	PULEGGIA	PULLEY
0806	228389	RACCORDO GIREVOLE (NO T.I.)	CONNECTOR
0810	2-01046	VITE M 10X55	SCREW M 10X55
0811	2-00213	RONDELLA Ø 10	WASHER Ø 10



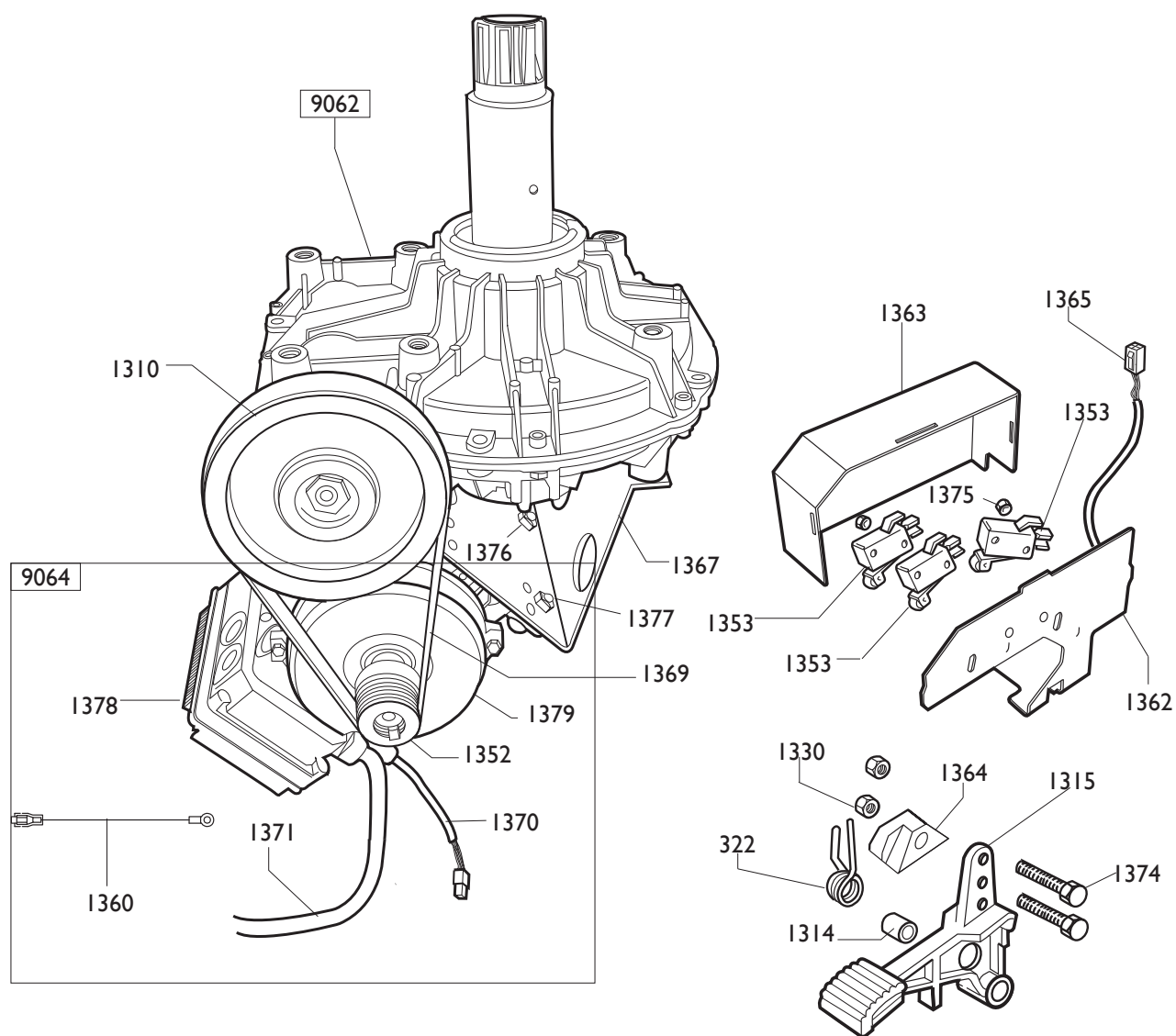
	A 9824 TI	Fig. M	03A / 03	Gruppo filtro
--	------------------	---------------	-----------------	----------------------

0901	335695	STAFFA	BRACKET
0914	3-00257	GIUNTO	CUOPLING
9902	456522	FILTRO	FILTER
1037	457511	BICCHIERE LUBRIF.	BOWL
1038	457512	BICCHIERE FILTRO	BOWL
0903	2-00001	RACCORDO	CONNECTOR
0916	3-00488	MANOMETRO	PRESSURE GAUGE
0206	3-00221	RACCORDO	CONNECTOR



	A 9824 T.I.	Fig. N	01 / 10	Accessories
--	--------------------	---------------	----------------	--------------------

1102	4-108275	LEVA	LEVER
1106	435202	CUNEO	WEDGE
1108	801435685	PINZA	PLIERS
1109	8-11100104	KIT 6 PROT.LEVA	SHIELD
1115	8-11100105	KIT 6 PROT.PALETТА	SHIELD
1117	8-11100108	KIT 12 PROT.CUNEO	SHIELD
1118	801458663	PROTEZIONE	SHIELD
1119	801252083	TORRETTA 8"	M/D HEAD
1120	801258650	KIT 4 ATTACCHI MOTO 15-23"	ADAPTOR 15-23"
1121	801260402	STALLONATORE	BEAD BREAKER
1123	8-11100107	KIT 5 PASTIGLIE	INSERT
1124	8-11100106	KIT 10 INSERTI	INSERT
1125	258649	BLOCCAGGIO	LOCKINGE
1126	801263517	KIT 4 ATTACCHI MOTO 8"-24"	ADAPTOR 8-24"
1111	801242834	LEVA PREMITALLONE	LEVER
0211	425219	MANOPOLA	KNOB
1114	440600	TESTINA	HEAD
1112	801250309	KIT TORRETTA PLASTICA	PLASTIC M/D HEAD
1113	450310	TORRETTA PLASTICA	PLASTIC M/D HEAD



MOTORE+INV 2 CONDENSATORI			MOTOR+REV.
9064	5-104986	200-230V Iph	200-230V Iph
1352	4-102397	PULEGGIA	PULLEY
1360	4-101659	CAVO TERRA	CABLE
1370	4-109895	CAVO COMANDI 230V	CABLE
1371	4-111586	CAVO RETE	CABLE
1378	4-115396	SCHEDA ELETTR. 230V	P.C.BOARD
1379	4-113412	MOTOINV. (NO SK) 200-230/1/50-60HZ	MOTOINVERTER 230V

MOTORE+INV			MOTOR+REV..
9064	5-104995	115V Iph	115V Iph
1352	4-102397	PULEGGIA	PULLEY
1360	4-101659	CAVO TERRA	CABLE
1371	4-111586	CAVO RETE	CABLE
1378	4-113414	SCHEDA ELETTR. 115V	P.C.BOARD
1370	4-109895	CAVO COMANDI 115V	CABLE
1379	4-113412	MOTOINV. (NO SK) 115V	MOTOINVERTER 115V

9062	5-102648	RIDUTTORE	GEAR BOX
1310	339870	PULEGGIA	PULLEY

0322	4-109664	MOLLA	SPRING
1314	325050	DISTANZIALE	SPACER
1315	5-102714	PEDALE	PEDAL
1330	346008	BOCCOLA	BUSHING
1353	440874	MICROINTERUTORE	MICROSWITCH
1362	4-102401	SUPPORTO MICRO	SUPPORT
1363	4-102402	COPERCHIO	CASING
1364	461535	SUPPORTO MICRO	SUPPORT
1365	4-101693	CAVO COMANDI PEDALIERA	CABLE
1367	4-109965	CULLA MOTORE 230/115V	SUPPORT
1369	3-00573	CINGHIA	BELT
1374	2-00441	VITE M6X50	SCREW
1375	2-00124	DADO M4	NUT
1376	421349	DADO M8	NUT
1377	2-00375	VITE M8X30	SCREW

Il disegno è realizzato con tutti i particolari ma solo quelli codificati sono forniti come ricambi. L'Azienda si riserva la facoltà di apportare modifiche senza preavviso.



Via per Carpi, n°9 - 42015 Correggio (RE) ITALY
Tel. ++39 0522 639111 - Fax ++39 0522 639150
www.corgi.com - info@corgi.com

The drawing shows all parts but only the coded parts are supplied as spares. The Company reserves the right to make modifications without prior notice.

UTB - Cod. 4-I03962D - 04_2013