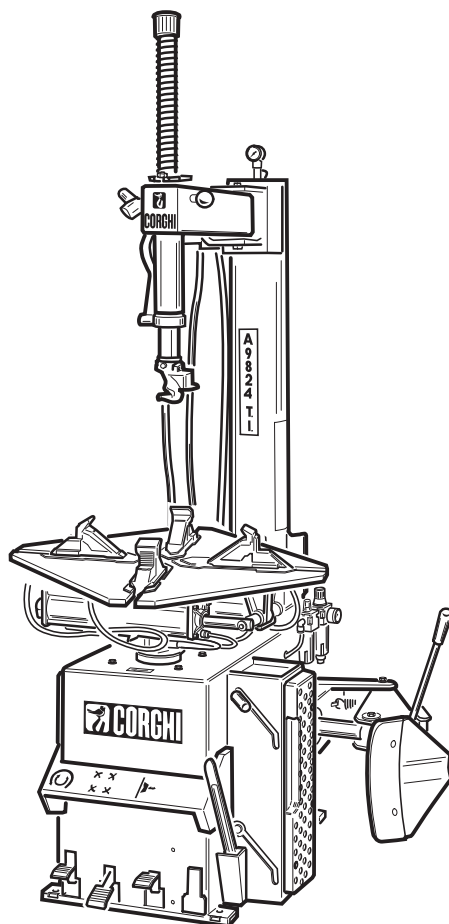


A 9824TI

Pezzi di ricambio / Spare parts list



Code: 4-103962E

Production date: 09 / 2014



I

Sul presente documento sono stati evidenziati con colore grigio i ricambi consigliati e indicati in grassetto i codici che sono variati rispetto a quelli riportati nella precedente versione del 04/13

EN

In this document, the recommended spare parts have been highlighted in gray, while in bold you find those codes which are different if compared with the previous version dated 04/13

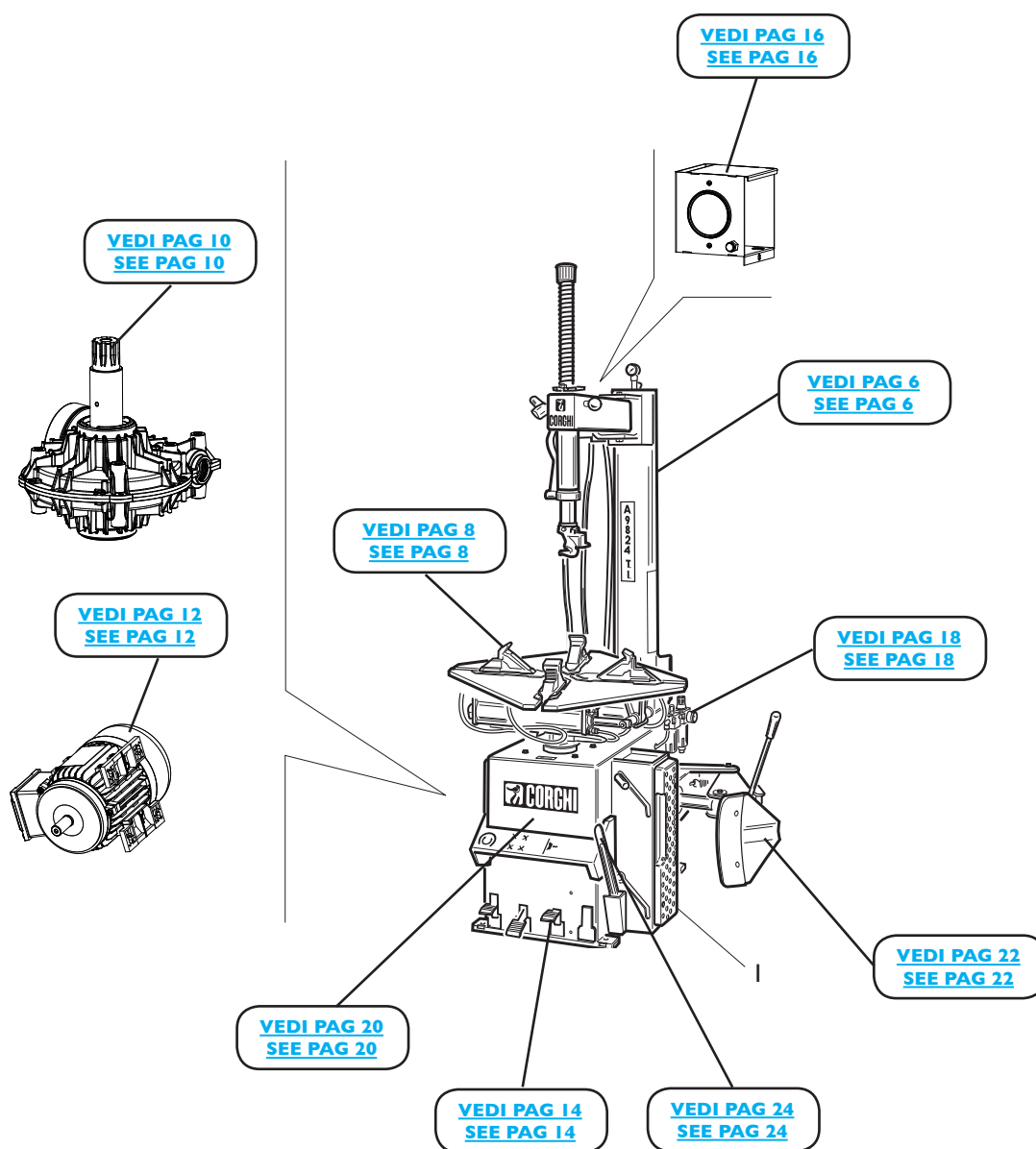
DE

Im vorliegenden Dokument wurden die empfohlenen Ersatzteile in grauer Farbe hervorgehoben; die Teilenummern in Fettdruck haben sich beziehend auf die vorherige Version vom 04/13 geändert.

FR

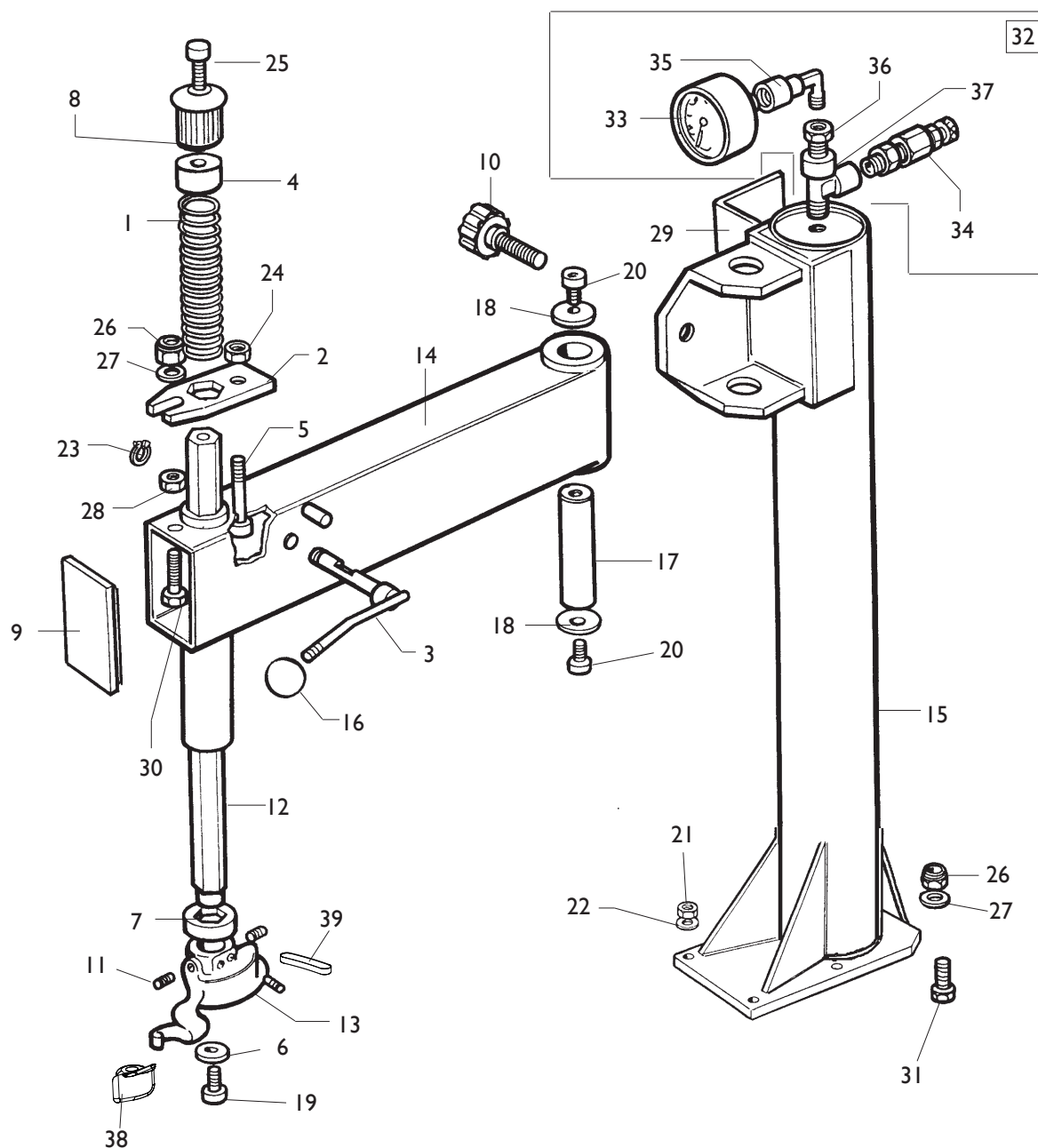
Dans ce document, les pièces de rechange préconisées sont soulignées en gris, tandis que les références différentes par rapport à la version précédente du 04/13 sont en gras

COMPLESSIVO A 9824TI A 9824TI OVERALL



| Rif. Ref. | Codice Code | Descrizione | Description |
|--------------|----------------|------------------|-------------|
| I | 436199 | APPOGGIO CERCHIO | RIM SUPPORT |

GRUPPO BRACCIO OPERANTE OPERATING ARM GROUP

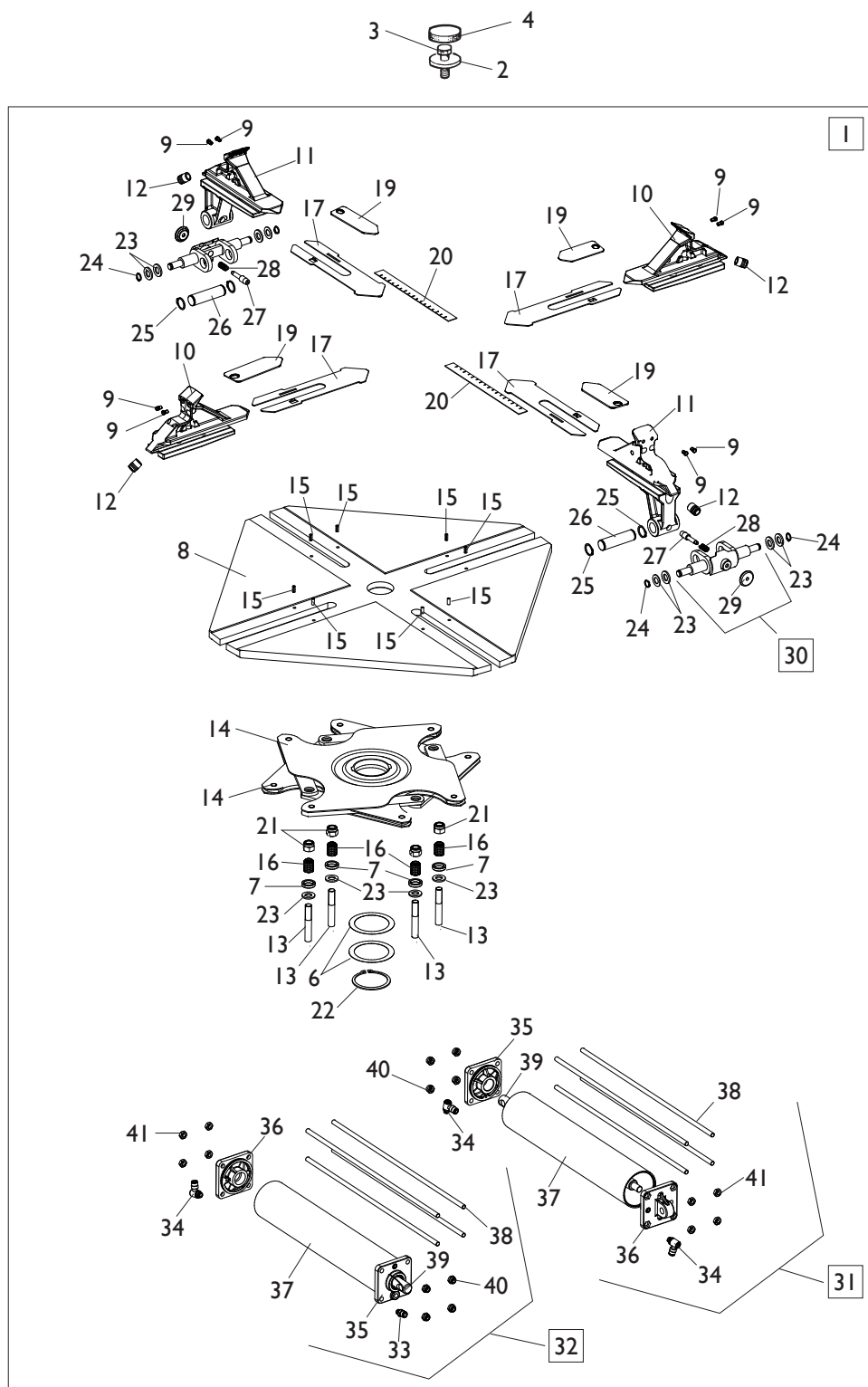


[TORNA AL COMPLESSIVO](#)
[RETURNS TO OVERALL](#)

| Rif. Ref. | Codice Code | Descrizione | Description |
|--------------|----------------|------------------------------------|--------------------------------------|
| 1 | 440341 | MOLLA D.44,5X3,2X532 | SPRING D.44,5X3,2X532 |
| 2 | 341001 | PIASTRA BLOCCAGGIO VERTICALE | VERTICAL LOCKING PLATE |
| 3 | 223877 | LEVA CON ECCENTRICO | LEVER |
| 4 | 346273 | PIASTRINA PER NOTTOLINO | PLATE |
| 5 | 341249 | VITE SPECIALE M12X50 | SPECIAL SCREW M12X50 |
| 6 | 350194 | RONDELLA D.12X33X5 | WASHER D.12X33X5 |
| 7 | 428681 | ANELLO AMMORTIZZATORE | DAMPING RING |
| 8 | 423907 | POMOLO | KNOB |
| 9 | 429971 | COPERCHIO | COVER |
| 10 | 441580 | MANOPOLA M20X1,5 | HANDLE M20X1,5 |
| 11 | 2-71537 | VSTEI M12X16 | CSK SCREW SOCKET M12X16 |
| 12 | 340343 | BRACCIO VERTICALE | VERTICAL ARM |
| 13 | 258458 | TORRETTA COMPLETA | HEAD ASSEMBLY |
| 14 | 238779 | BRACCIO A BANDIERA | ORIZONTAL ARM |
| 15 | 5-101130 | PALO | ARM |
| 16 | 423889 | MANOPOLA | HANDLE |
| 17 | 323881 | PERNO BRACCIO | ARM PIN |
| 18 | 318216 | RONDELLA D.12,5X50X4 | WASHER D.12,5X50X4 |
| 19 | 350197 | VITE SPECIALE FISS.TORRETTA M10X20 | SPECIAL SCREW M10X20 |
| 20 | 2-01225 | VTE M12X25 | HEXAGON HEAD SCREW M12X25 |
| 21 | 2-01275 | DADO ES.N. M10 | NORMAL HEXAGON NUT M10 |
| 22 | 441631 | RONDELLA D.48X13X3 | WASHER D.48X13X3 |
| 23 | 2-00025 | SEEGER D.12 | SEEGER D.12 |
| 24 | 2-00153 | DADO ES. M12 | HEXAGON NUT M12 |
| 25 | 2-01312 | VTCEI 1/2F M8X80 | HEXAGON SOCKET HEAD SCREW 1/2F M8X80 |
| 26 | 2-01019 | DADO ES.A. M10 | AUTOLOCKING HEXAGON NUT M10 |
| 27 | 2-00213 | RONDELLA D.10 | WASHER D.10 |
| 28 | 2-00152 | DADOES. M10 | HEXAGON NUT M10 |
| 29 | 338808 | SUPPORTO SCATOLA GONFIAGGIO | INFLATION BOX SUPPORT |
| 30 | 2-00382 | VTE M10X45 | HEXAGON HEAD SCREW M10X45 |
| 31 | 2-00430 | VTE 1/2F M10X65 | HEXAGON HEAD SCREW 1/2F M10X65 |
| 32 | 241608 | GRUPPO MANOMETRO | GAUGE ASSEMBLY |
| 33 | 3-00488 | MANOMETRO D.40 1/8 0-12 BAR/PSI | PRESSURE GAUGE D.40 1/8 0-12 BAR/PSI |
| 34 | 3-00356 | LIMITATORE DI PRESSIONE | VALVE |
| 35 | 3-00138 | RACCPN-L G1/8 | L-FITTING G1/8 |
| 36 | 3-00271 | RACCPN-G3/8-1/8F | FITTING G3/8-1/8F |
| 37 | 3-00131 | RACCPN-TL-G3/8CG-FF | TL-FITTING G3/8CG-FF |
| 38 | 4-104729 | INSERTO GIALLO | YELLOW INSERT |
| 39 | 4-104730 | INSERTO GIALLO | YELLOW INSERT |

GRUPPO AUTOCENTRANTE 10-24”

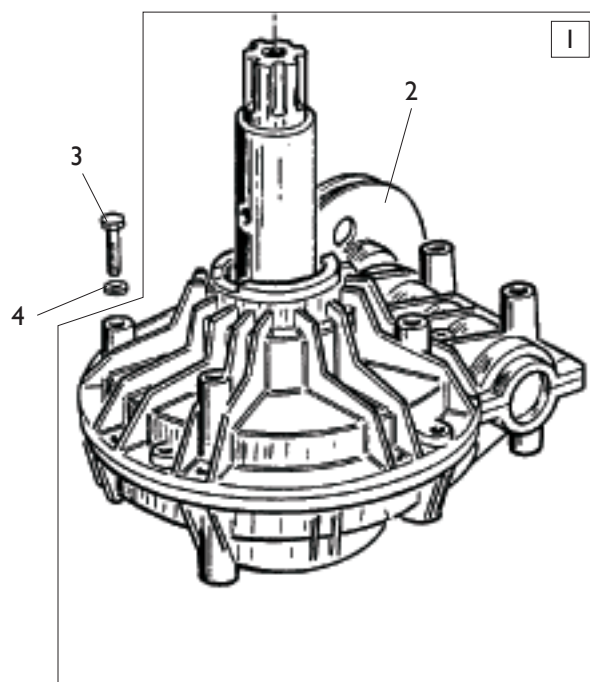
TURNTABLE GROUP 10-24”



[TORNA AL COMPLESSIVO](#)
[RETURNS TO OVERALL](#)

| Rif. Ref. | Codice Code | Descrizione | Description |
|--------------|-----------------|---|---|
| 1 | 5-100461 | GRUPPO AUTOCENTRANTE T.I. 10-24" | TURNTABLE T.I.ASSEMBLY 10-24" |
| 2 | 323363 | RONDELLA D.16,5X48X10 | WASHER D.16,5X48X10 |
| 3 | 2-01216 | VTE M16X1,5X35 | HEXAGON HEAD SCREW M16X1,5X35 |
| 4 | 426514 | TAPPO TONDO | ROUND CAP |
| 5 | 238548 | KIT GUARNIZIONI CILINDRI | CYLINDERS SEAL KIT |
| 6 | 455082 | RONDELLA D.65X85X0,4 | WASHER D.65X85X0,4 |
| 7 | 437964 | RONDELLA D.18,5X25X5 | WASHER D.18,5X25X5 |
| 8 | 4-101438 | PIATTO AUTOCENTRANTE 10-24" | TURNTABLE PLATE 10-24" |
| 9 | 339146 | PUNTA DI BLOCCAGGIO | LOCKING PEAK |
| 10 | 5-100485 | APP. SCORREVOLE TRAINATO T.I. | RIM SUPPORT T.I. |
| 11 | 5-100488 | APP. SCORREVOLE TRAINANTE T.I. | RIM SUPPORT T.I. |
| 12 | 441100 | RACCORDO T.10 | FITTING T.10 |
| 13 | 2-02199 | VTE 1/2F M12X1,25X75 | HEXAGON HEAD SCREW 1/2F M12X1,25X75 |
| 14 | 4-101651 | FLANGIA COMANDO BIELLE | FLANGE CONTROL RODS |
| 15 | 2-01059 | SPINA D.5X12 | PLUG D.5X12 |
| 16 | 353803 | BOCCOLA D.12X18X22,2 | BUSHING D.12X18X22,2 |
| 17 | 4-101441 | SLITTA COPRIASOLA 10-24" | PLATE 10-24" |
| 19 | 4-101453 | SLITTA | PLATE |
| 20 | 4-101456 | RIGHELLO MISURA POLLICI 10-24" | RULER MEASUREMENT INCHES 10-24" |
| 21 | 2-02200 | DADO ES.A. M12X1,25 | AUTOLOCKING HEXAGON NUT M12X1,25 |
| 22 | 2-01283 | ANELLO D.65 | SEEGER D.65 |
| 23 | 2-00214 | RONDELLA D.12 | WASHER D.12 |
| 24 | 2-00025 | SEEGER D.12 | SEEGER D.12 |
| 25 | 2-71587 | SEEGER D.20 | SEEGER D.20 |
| 26 | 4-101442 | PERNO | PIN |
| 27 | 4-101444 | INNESTO | CONNECTION |
| 28 | 4-101422 | MOLLA D.1,2X10X20 | SPRING D.1,2X10X20 |
| 29 | 4-109834 | POMOLO | KNOB |
| 30 | 5-103522 | KIT MANOVELLE + POMOLI (2PZ) | KNOB KIT (2 PIECES) |
| 31 | 5-100455 | CILINDRO DX D.70X304,5 10-24" | RIGHT CYLINDER D.70X304,5 10-24" |
| 32 | 5-100454 | CILINDRO SX D.70X304,5 10-24" | LEFT CYLINDER D.70X304,5 10-24" |
| 33 | 3-02045 | RACCPN-D- G1/8 T6 + O-RING | D-FITTING G1/8 WITH O-RING |
| 34 | 3-02044 | RACCPN-LO- G1/8 T6 + O-RING | LO-FITTING G1/8 WITH O-RING |
| 35 | 5-105111 | FLANGIA ANTERIORE D.70 | FRONT FLANGE D.70 |
| 36 | 4-115948 | FLANGIA POSTERIORE D.70 | REAR FLANGE D.70 |
| 37 | 4-115951 | CAMICIA D.70X338,5 10-24" | LINER D.70X338,5 10-24" |
| 38 | 4-115949 | TIRANTE D.7X368 M8 10-24" | TIE ROD D.7X368 M8 10-24" |
| 39 | 4-115959 | STELO D.20X437 | STEM D.20X437 |
| 40 | 2-01137 | DADO ES.A. M8 | AUTOLOCKING HEXAGON NUT M8 |
| 41 | 2-00156 | DADO ES. M8 | HEXAGON NUT M8 |

GRUPPO RIDUTTORE GEARBOX GROUP

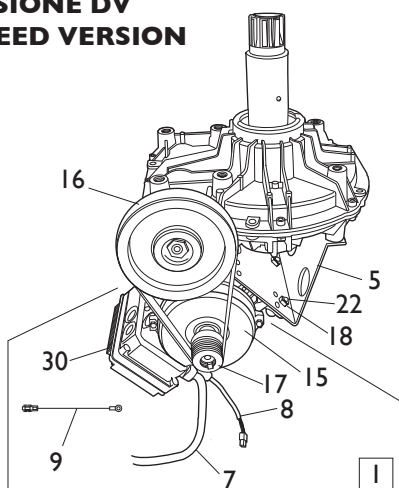


[TORNA AL COMPLESSIVO](#)
[RETURNS TO OVERALL](#)

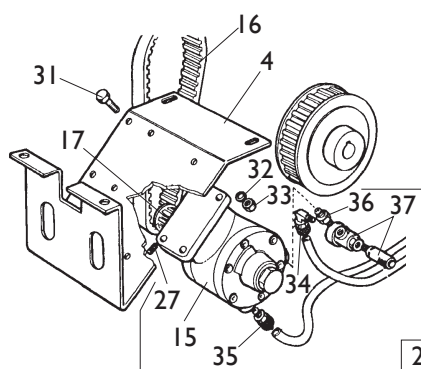
| Rif. Ref. | Codice Code | Descrizione | Description |
|--------------|----------------|-----------------------------|---------------------------|
| 1 | 5-102647 | RIDUTTORE IV | GEARBOX I SPEED |
| 1 | 5-102652 | RIDUTTORE CSA | GEARBOX CSA |
| 1 | 5-102651 | RIDUTTORE PNEUMATICO | GEARBOX PNEUMATIC |
| 1 | 5-101783 | RIDUTTORE 2V | GEARBOX 2 SPEED |
| 2 | 314344 | PULEGGIA IV | PULLEY I SPEED |
| 2 | 354082 | PULEGGIA CSA | PULLEY CSA |
| 2 | 319073 | PULEGGIA PNEUMATICA | PULLEY PNEUMETIC |
| 2 | 339870 | PULEGGIA 2V | PULLEY 2 SPEED |
| 3 | 2-01046 | VTE M10X55 | HEXAGON HEAD SCREW M10X55 |
| 4 | 2-00213 | RONDELLA D.10 | WASHER D.10 |

IMPIANTO ELETTRICO ELECTRICAL SYSTEM

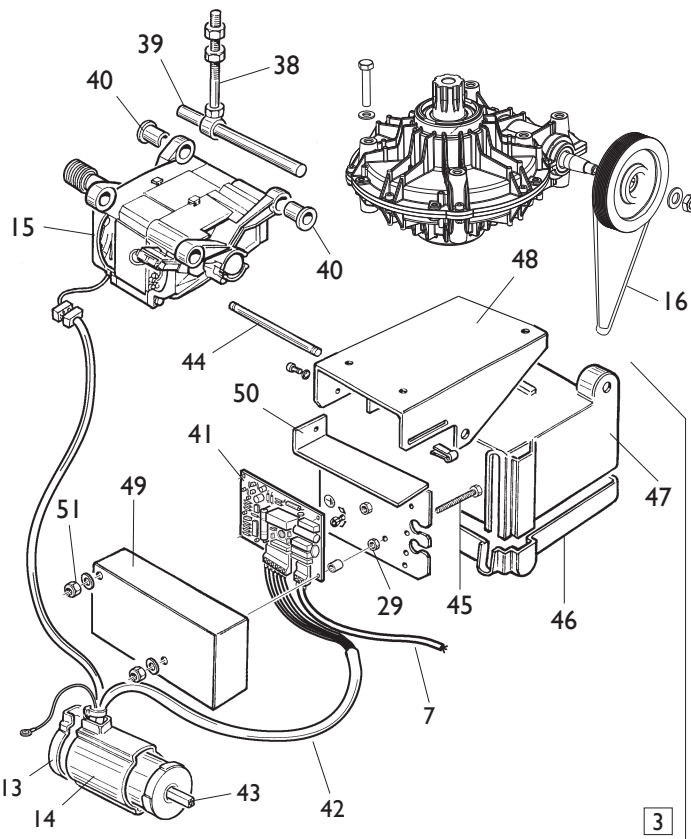
**VERSIONE DV
2 SPEED VERSION**



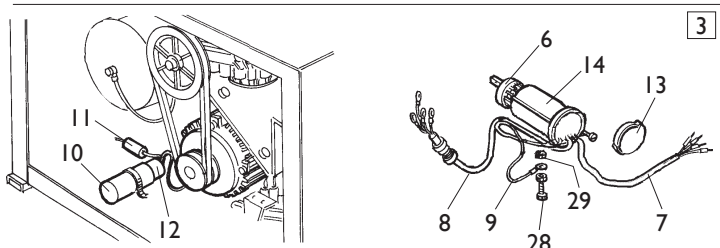
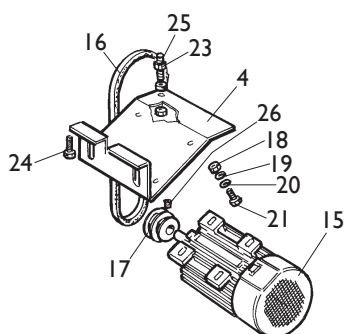
**VERSIONE PNEUMATICA
PNEUMATIC VERSION**



**VERSIONE CSA
CSA VERSION**



**VERSIONE 3ph / 1ph
3ph / 1ph VERSION**

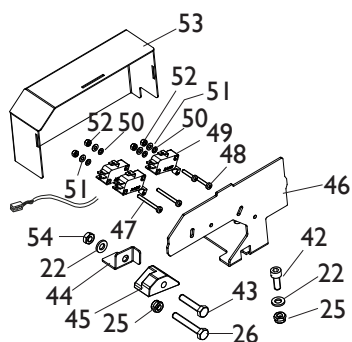


[TORNA AL COMPLESSIVO
RETURNS TO OVERALL](#)

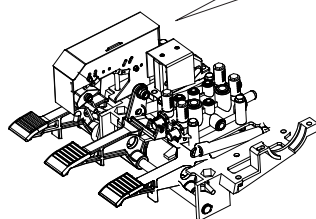
| Ref. | Code | Descrizione | Description |
|------|----------|--|--|
| 1 | 5-104995 | MOTOINVERTER DV 115V/1/50-60HZ | MOTOINVERTER 2 SPEED 115V/1/50-60HZ |
| 2 | 236726 | MOTORE PNEUMATICO CON PULEGGIA | PNEUMATIC MOTOR ASSEMBLY |
| 3 | 5-103989 | IMPIANTO ELETTRICO 115V 1ph | ELECTRICAL SYSTEM 115V 1ph |
| 3 | 235574 | IMPIANTO ELETTRICO 400/230V 3ph | ELECTRICAL SYSTEM 400/230V 3ph |
| 3 | 262569 | IMPIANTO ELETTRICO CSA | ELECTRICAL SYSTEM CSA |
| 4 | 334768 | CULLA MOTORE 12 | MOTOR SUPPORT |

| Ref. | Code | Descrizione | Description |
|------|----------|---|--|
| 5 | 4-109965 | CULLA MOTOINVERTER DV | MOTOINVERTER SUPPORT |
| 6 | 5-102742 | INVERTITORE | INVERTER |
| 7 | 447801 | CAVO RETE 115V 1ph | SUPPLY CABLE 115V 1ph |
| 7 | 247801 | CAVO RETE CSA | SUPPLY CABLE CSA |
| 7 | 235518 | CAVO RETE 400/230V 3ph | SUPPLY CABLE 440/230V 3ph |
| 7 | 4-111586 | CAVO RETE MOTOINVERTER | SUPPLY CABLE MOTOINVERTER |
| 8 | 249590 | CAVO MOTORE 115V 1ph | MOTOR CABLE 115V 1ph |
| 8 | 225390 | CAVO MOTORE 400/230V 3ph | MOTOR CABLE 400/230V 3ph |
| 8 | 4-109895 | CAVO COMANDI MOTOINVERTER | COMMAND CABLE MOTOINVERTER |
| 9 | 249601 | CAVO DI MASSA L.350mm 115V 1ph | U-BOLT L.350mm 115V 1ph |
| 9 | 225051 | CAVO DI MASSA L.350mm 400/230V 3ph | U-BOLT L.350mm 400/230V 3ph |
| 9 | 4-101659 | CAVO DI MASSA L.400mm MOTOINV. | U-BOLT L.400mm MOTOINVERTER |
| 10 | 430750 | CAPPELLOTTO D.45 115V 1ph | CAP NUT 115V 1ph |
| 11 | 430770 | RESISTENZA 330K OHM | RESISTANCE 330K OHM |
| 12 | 4-112706 | CONDENSATORE 50mf 115V 1ph | CAPACITOR 50mf 115V 1ph |
| 13 | 430991 | COPERCHIO PROTEZIONE | LID |
| 14 | 432065 | PROTEZIONE INVERTITORE | INVERTER COVER |
| 15 | 422013 | MOTORE 400/230V 3ph | MOTOR 400/230V 3ph |
| 15 | 4-112454 | MOTORE 115V 1ph | MOTOR 115V 1ph |
| 15 | 462139 | MOTORE CSA | MOTOR CSA |
| 15 | 4-113412 | MOTOINVERTER (NO SK) 230/115V | MOTOINVERTER (NO P.C. BOARD) 230/115V |
| 15 | 319135 | MOTORE PNEUMATICO | PNEUMATIC MOTOR |
| 16 | 3-00573 | CINGHIA MOTORE 2V | MOTOR BELT 2 SPEED |
| 16 | 3-00555 | CINGHIA MOTORE 3ph / 1ph | MOTOR BELT 3ph / 1ph |
| 16 | 3-00575 | CINGHIA MOTORE CSA | MOTOR BELT CSA |
| 16 | 3-00585 | CINGHIA MOTORE PNEUMATICO | BELT FOR PNEUMATIC MOTOR |
| 17 | 331067 | PULEGGIA MOTORE 3ph / 1ph | MOTOR PULLEY 3ph / 1ph |
| 17 | 319076 | PULEGGIA MOTORE PNEUMATICO | PULLEY FOR PNEUMATIC MOTOR |
| 17 | 4-102397 | PULEGGIA MOTOINVERTER | PULLEY FOR MOTOINVERTER |
| 18 | 421349 | DADO ES.A. M8 | AUTOLOCKING HEXAGON NUT M8 |
| 19 | 339208 | RONDELLA D.8,5X22X4 | WASHER D.8,5X22X4 |
| 20 | 2-00212 | RONDELLA D.8 | WASHER D.8 |
| 21 | 2-00374 | VTE M8X25 | HEXAGON HEAD SCREW M8X25 |
| 22 | 2-00375 | VTE M8X30 | HEXAGON HEAD SCREW M8X30 |
| 23 | 2-00152 | DADO ES. M10 | HEXAGON NUT M10 |
| 24 | 2-00328 | VTCEI M10X20 | HEXAGON SOCKET HEAD SCREW M10X20 |
| 25 | 455920 | VSTEI SPECIALE M10X60 | SPECIAL SCREW M10X60 |
| 26 | 2-01091 | VSTEI M6X5 | CSK SCREW SOCKET M6X5 |
| 27 | 2-00801 | VSTEI M6X6 | CSK SCREW SOCKET M6X6 |
| 28 | 2-00605 | VITE M4X10 | SCREW M4X10 |
| 29 | 2-00143 | DADO ES. M4 | HEXAGON NUT M4 |
| 30 | 4-113414 | SK MOTOINVERTER 115V | MOTOINVERTER P.C. BOARD 115V |
| 31 | 2-00363 | VTE M6X25 | HEXAGON HEAD SCREW M6X25 |
| 32 | 2-00211 | RONDELLA D.6 | WASHER D.6 |
| 33 | 422288 | DADO ES.A. M6 | AUTOLOCKING HEXAGON NUT M6 |
| 34 | 3-00109 | RACCPN-L G1/8C T10/8 | L-FITTING G1/8C T10/8 |
| 35 | 3-00040 | RACCPN-D G1/4C T10/8 | D-FITTING G1/4C T10/8 |
| 36 | 3-00141 | NIPPLO G1/4C | NIPPLES G1/4C |
| 37 | 3-00316 | VALVOLA G1/8 | VALVE G1/8 |
| 38 | 5-100519 | TIRANTE MOTORE | MOTOR TIE-ROD |
| 39 | 340367 | PERNO CORTO | SHORT PIN |
| 40 | 440365 | BOCCOLA D.12X20X28 | BUSH D.12X20X28 |
| 41 | 462138 | SK CSA | P.C. BOARD CSA |
| 42 | 262570 | CAVO COLL. MOTORE-SK CSA | CABLE CSA |
| 43 | 5-102744 | INVERTITORE CSA | INVERTER CSA |
| 44 | 346012 | PERNO FULCRO | FULCRUM PIN |
| 45 | 2-91645 | VTIC M4X70 | SCREW M4X70 |
| 46 | 462571 | COPERTURA MOTORE INFERIORE | REAR MOTOR COVER |
| 47 | 462572 | COPERTURA MOTORE SUPERIORE | FRONT MOTOR COVER |
| 48 | 346017 | CULLA MOTORE CSA | MOTOR SUPPORT CSA |
| 49 | 462573 | COPERCHIO SK CSA | P.C. BOARD COVER CSA |
| 50 | 349299 | SUPPORTO SK CSA | P.C. BOARD SUPPORT CSA |
| 51 | 2-01018 | DADO ES.A. M4 | AUTOLOCKING HEXAGON NUT M4 |

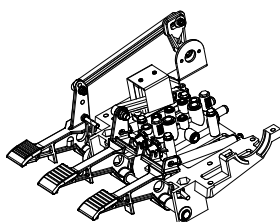
GRUPPO PEDALIERA
PEDAL GROUP



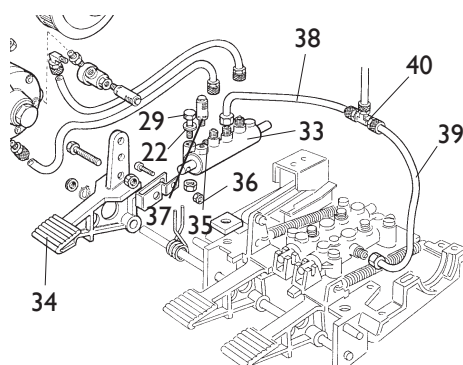
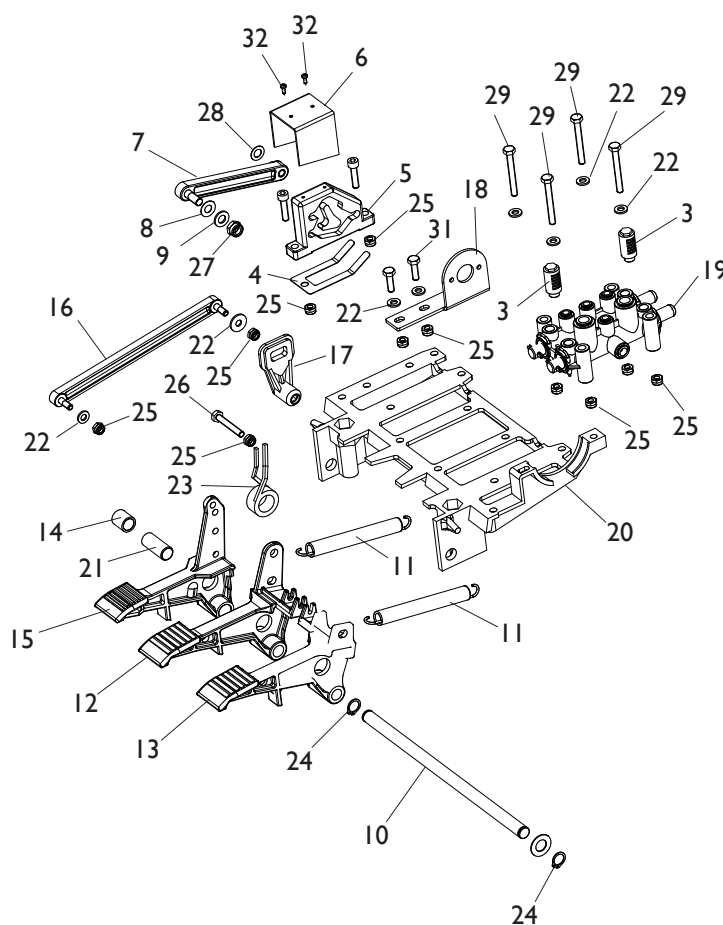
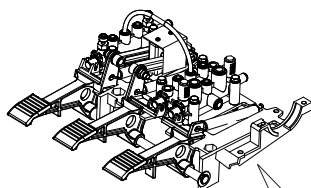
41 VERSIONE DV 2 SPEED VERSION



VERSIONE IV
I SPEED VERSION



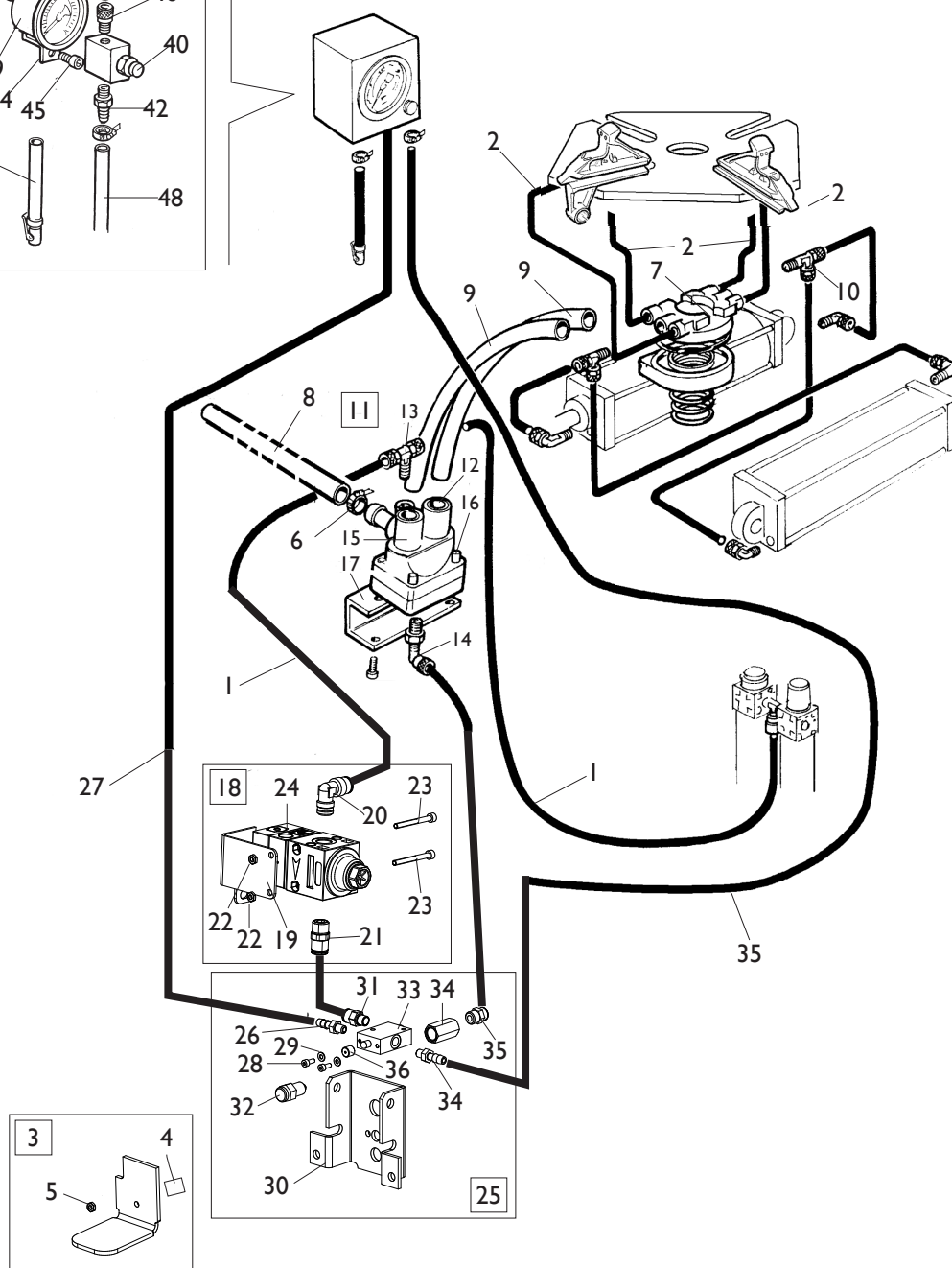
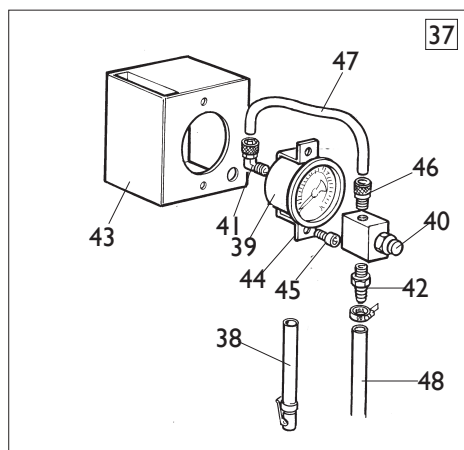
**2 VERSIONE PNEUMATICA
PNEUMATIC VERSION**



TORNA AL COMPLESSIVO
RETURNS TO OVERALL

| Rif. Ref. | Codice Code | Descrizione | Description |
|--------------|----------------|------------------------------|---------------------------------|
| 1 | 241201 | PEDALIERA 1 VELOCITA | PEDAL ASSEMBLY 1 SPEED |
| 2 | 270526 | PEDALIERA PNEUMATICA | PEDAL ASSEMBLY PNEUMATIC |
| 3 | 3-00183 | SILENZIATORE IN PLASTICA 1/8 | PLASTIC SILENCER 1/8 |
| 4 | 325019 | BALESTRA A FORCELLA | LEAF SPRING |
| 5 | 425020 | CAMMA DOPPIA | DOUBLE CAM |
| 6 | 325018 | CAVALLOTTO GUIDA BIELLE | U-BOLT |
| 7 | 425014 | BIELLA CAMMA | CAM ROD |
| 8 | 2-02247 | RONDELLA D.8,4X15 | WASHER D.8,4X15 |
| 9 | 309358 | RONDELLA D.8X16,5X0,5 | WASHER D.8X16,5X0,5 |
| 10 | 325583 | PERNO PEDALIERA | PEDAL PIN |
| 11 | 410628 | MOLLA D.14X2X105 | SPRING D.14X2X105 |
| 12 | 325031 | PEDALE AUTOCENTRANTE | TURNTABLE PEDAL |
| 13 | 325032 | PEDALE STALLONATORE | BEAD BRAKE PEDAL |
| 14 | 325050 | DISTANZIALE | SPACER |
| 15 | 5-102714 | PEDALE INVERTITORE | INVERTER PEDAL |
| 16 | 429009 | BIELLA | ROD |
| 17 | 404283 | LEVA INVERTITORE | INVERTER LEVER |
| 18 | 334758 | SUPPORTO INVERTITORE | INVERTER SUPPORT |
| 19 | 5-102739 | RUBINETTO DOPPIO | DOUBLE VALVE |
| 20 | 524273 | SUPPORTO COMANDI | COMMAND SUPPORT |
| 21 | 425011 | BOCCOLA D.12X14X33,5 | BUSH D.12X14X33,5 |
| 22 | 2-00211 | RONDELLA D.6 | WASHER D.6 |
| 23 | 4-109664 | MOLLA COMANDO INTERRUTTORE | INVERTER SPRING |
| 24 | 2-00025 | SEEGER D.12 | SEEGER D.12 |
| 25 | 2-01979 | DADO ES.A. M6 | AUTOLOCKING HEXAGON NUT M6 |
| 26 | 2-00366 | VTE M6X40 | HEXAGON HEAD SCREW M6X40 |
| 27 | 2-01137 | DADO ES.A. M8 | AUTOLOCKING HEXAGON NUT M8 |
| 28 | 2-00212 | RONDELLA D.8 | WASHER D.8 |
| 29 | 2-00411 | VTE 1/2F M6X50 | HEXAGON HEAD SCREW 1/2F M6X50 |
| 30 | 2-00312 | VTCEI M6X25 | HEXAGON SOCKET HEAD SCREW M6X25 |
| 31 | 2-00362 | VTE M6X20 | HEXAGON HEAD SCREW M6X20 |
| 32 | 2-01272 | VATBIC D.2,9X9,5 | SCREW D.2,9X9,5 |
| 33 | 5-102740 | RUBINETTO SINGOLO | SINGLE VALVE |
| 34 | 252030 | PEDALE PNEUMATICO | PNEUMATIC PEDAL |
| 35 | 331381 | BIELLA | ROD |
| 36 | 2-01018 | DADO ES.A. M4 | AUTOLOCKING HEXAGON NUT M4 |
| 37 | 2-00291 | VTCEI M4X20 | HEXAGON SOCKET HEAD SCREW M4X20 |
| 38 | 321200 | TUBO RYLSAN 8X1 L.300mm | RYLSAN HOSE 8X1 L.220mm |
| 39 | 332142 | TUBO RYLSAN 8X1 L.160mm | RYLSAN HOSE 8X1 L.120mm |
| 40 | 3-00112 | RACCPN-T T8/6 | T-FITTING T8/6 |
| 41 | 5-101614 | PEDALIERA 2 VELOCITA | PEDAL ASSEMBLY 2 SPEED |
| 42 | 2-00309 | VTCEI M6X16 | HEXAGON SOCKET HEAD SCREW M6X16 |
| 43 | 2-00364 | VTE M6X30 | HEXAGON HEAD SCREW M6X30 |
| 44 | 4-105045 | STAFFA ANTIROTAZIONE | ANTIROTATING PLATE |
| 45 | 461535 | BLOCCHETTO MICRO | MICRO BLOCK |
| 46 | 4-105044 | SUPPORTO MICRO | MICRO SUPPORT |
| 47 | 2-00578 | VTCIC M3X30 | SCREW M3X30 |
| 48 | 2-00576 | VTCIC M3X20 | SCREW M3X20 |
| 49 | 440874 | MICRO 16A 250V | MICRO 16A 250V |
| 50 | 2-71547 | ROSETTA D.3 | WASHER D.3 |
| 51 | 2-00208 | RONDELLA D.3 | WASHER D.3 |
| 52 | 2-00124 | DADO ES. M3 | HEXAGON NUT M3 |
| 53 | 4-102402 | COPERCHIO | COVER |
| 54 | 2-00155 | DADO ES. M6 | HEXAGON NUT M6 |

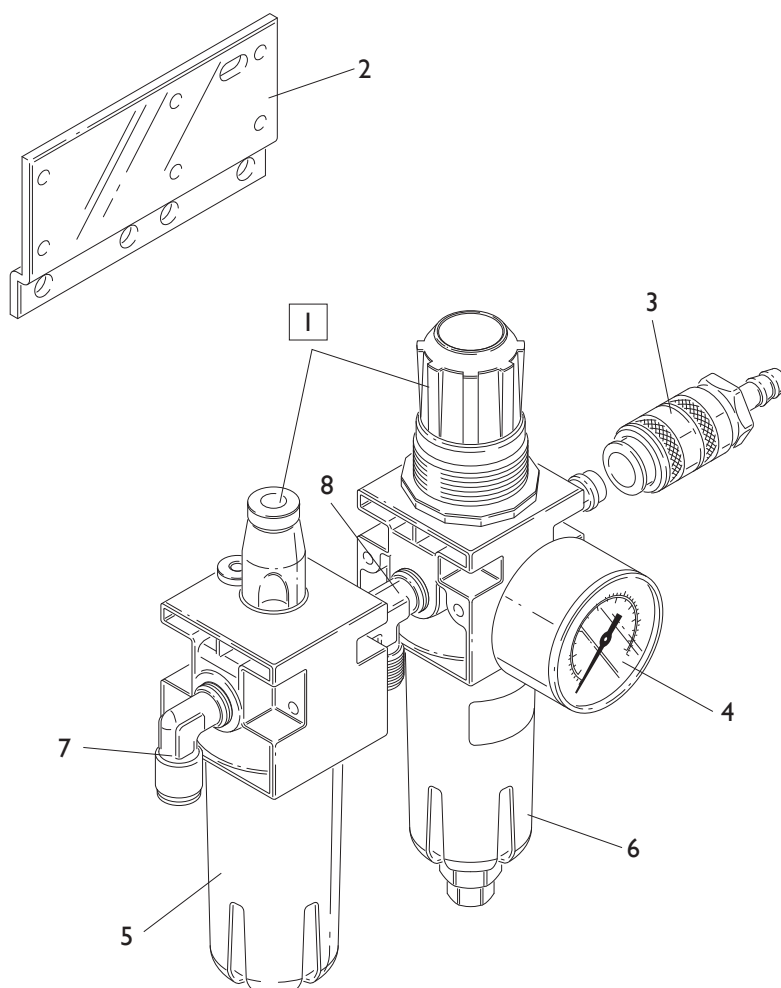
GRUPPO GONFIAGGIO T.I. T.I. INFLATION GROUP



[TORNA AL COMPLESSIVO](#)
[RETURNS TO OVERALL](#)

| Rif. Ref. | Codice Code | Descrizione | Description |
|--------------|-----------------|------------------------------------|---------------------------------------|
| 1 | 1-01683 | TUBO RYLSAN D8X1 | RYLSAN HOSE D.8X1 |
| 2 | 1-04223 | TUBO POLIUR.ARIA D.10X1,25 | HOSE D.10X1,25 |
| 3 | 252625 | PEDALE GONFIAGGIO | INFLATION PEDAL |
| 4 | 452624 | ANTIVIBRANTE M/F 20X11 M6X9 | VIBRATION DAMPING 20X11 M6X9 |
| 5 | 2-00150 | DADO ES. M6 | HEXAGON NUT M6 |
| 6 | 403751 | FASCETTA D.8-16 | FASTEN D.8-16 |
| 7 | 241841 | RACCORDO GIREVOLE T.I. | ROTATING JOINT T.I. |
| 8 | 346266 | TUBO IN GOMMA 25X37 18ATM. L.630mm | RUBBER HOSE 25X37 L.630mm |
| 9 | 342289 | TUBO RYLSAN TRASP. 14X1 L.650mm | RYLSAN HOSE 14X1 L.650mm |
| 10 | 3-00117 | RACCPN-TL G1/8C T6/4 | TL-FITTING G1/8C T6/4 |
| 11 | 242290 | VALVOLA DI GONFIAGGIO T.I. | T.I. INFLATION VALVE |
| 12 | 3-02945 | CARTUCCIA | CARTRIGE |
| 13 | 4-402799 | RACCPN-TO G1/4C T8 | T-FITTING G1/4C T8 |
| 14 | 4-402798 | RACCPN-LO G1/4C T8 | L-FITTING G1/4C T8 |
| 15 | 243020 | VALVOLA | VALVE |
| 16 | 2-94006 | VTCEI 1/2F M6X40 | HEXAGON SOCKET HEAD SCREW 1/2F M6X40 |
| 17 | 342286 | STAFFA PORTA VALVOLA | VALVE BRACKET |
| 18 | 5-105674 | LIMITATORE GONFIAGGIO CPL. | VALVE ASSEMBLY |
| 19 | 4-117416 | SUPPORTO VALVOLA | VALVE SUPPORT |
| 20 | 3-00221 | RACCPN-L G1/4C T8 | L-FITTING G1/4C T8 |
| 21 | 3-00478 | RACCPN-D G1/4C T8 | D-FITTING G1/4C T8 |
| 22 | 2-02804 | DADO ES. M4 | HEXAGON NUT M4 |
| 23 | 2-00851 | VTCEI M4X40 | HEXAGON SOCKET HEAD SCREW M4X40 |
| 24 | 3-00389 | LIMITATORE DI GONFIAGGIO | VALVE |
| 25 | 5-105676 | GRUPPO DI GONFIAGGIO CPL. | INFLATION ASSEMBLY |
| 26 | 3-00004 | RACCPN ATTACCO RESCA 7 G1/8 | RESCA FITTING G1/8 |
| 27 | 352614 | TUBO IN GOMMA L.3500mm | RUBBER HOSE L.3500mm |
| 28 | 2-00289 | VTCEI M4X10 | HEXAGON SOCKET HEAD SCREW M4X10 |
| 29 | 2-00209 | RONDELLA D.4 | WASHER D.4 |
| 30 | 352968 | SUPPORTO VALVOLA | VALVE SUPPORT |
| 31 | 3-00464 | RACCPN-D G1/8G T8 | D-FITTING G1/8G T8 |
| 32 | 235463 | VALVOLA SGONFIAGGIO | DEFLATION VALVE |
| 33 | 3-00365 | VALVOLA 3/2 1/8 | VALVE 3/2 1/8 |
| 34 | 338576 | DISTANZIALE 17X32 | SPACER 17X32 |
| 35 | 3-00460 | RACCPN-D G1/4 T6 | D-FITTING G1/4 T6 |
| 36 | 352619 | CAPPELLOTTO DISTANZIALE | SPACER |
| 37 | 252600 | SCATOLA GONFIAGGIO BAR/PSI | BAR/PSI INFLATION BOX ASSEMBLY |
| 38 | 262971 | TUBO GONFIAGGIO | INFLATION HOSE |
| 39 | 3-00489 | MANOMETRO BAR/PSI | BAR/PSI PRESSURE GAUGE |
| 40 | 235463 | VALVOLA SGONFIAGGIO | DEFLATION VALVE |
| 41 | 3-00261 | RACCPN-D G1/4F T6 | D-FITTING G1/4F T6 |
| 42 | 3-00007 | RACCPN ATTACCO RESCA 7 G1/4 | RESCA FITTING G1/4 |
| 43 | 234171 | SCATOLA MANOMETRO | GAUGE BOX |
| 44 | 353537 | SUPPORTO MANOMETRO | PRESSURE GAUGE SUPPORT |
| 45 | 2-71485 | VTABIC D.3,9X13 | SCREW D.3,9X13 |
| 46 | 3-00460 | RACCPN-D G1/4 T6 | D-FITTING G1/4 T6 |
| 47 | 315268 | TUBO RYLSAN 6X1 L.260mm | RYLSAN HOSE 6X1 L.260mm |
| 48 | 354410 | TUBO 18 ATM. D.6-14 L.3150mm | RUBBER HOSE D.6-14 L.3150mm |

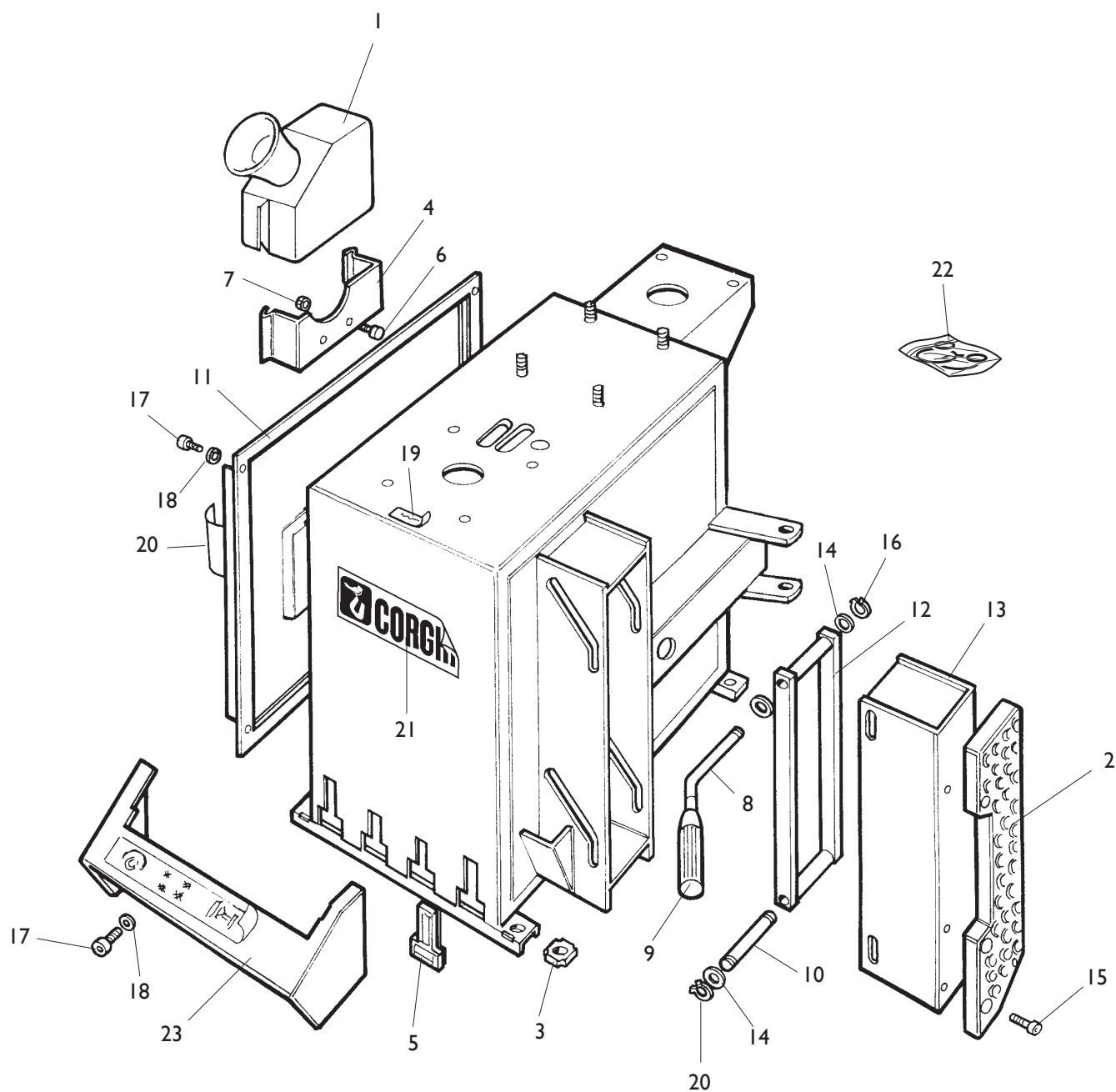
GRUPPO FILTRO FILTER GROUP



[TORNA AL COMPLESSIVO](#)
[RETURNS TO OVERALL](#)

| Rif. Ref. | Codice Code | Descrizione | Description |
|--------------|----------------|---|---|
| 1 | 456522 | FILTRO CPL (MANOMETRO ESCLUSO) | FILTER ASSEMBLY (GAUGE NOT INCLUDED) |
| 2 | 335695 | STAFFA FILTRO | FILTER BRACKET |
| 3 | 3-00257 | RACCORDO RAPIDO | FITTING |
| 4 | 3-00488 | MANOMETRO D.40 1/8 0-12 BAR/PSI | PRESSURE GAUGE D.40 1/8 0-12 BAR/PSI |
| 5 | 457511 | BICCHIERE LUBRIFICATORE | LUBRICATOR BOWL |
| 6 | 457512 | BICCHIERE FILTRO | FILTER BOWL |
| 7 | 3-00221 | RACCPN-L G1/4C T8 | L-FITTING G1/4C T8 |
| 8 | 3-00001 | RACCPN-T G1/4 M/M | T-FITTING G1/4 |

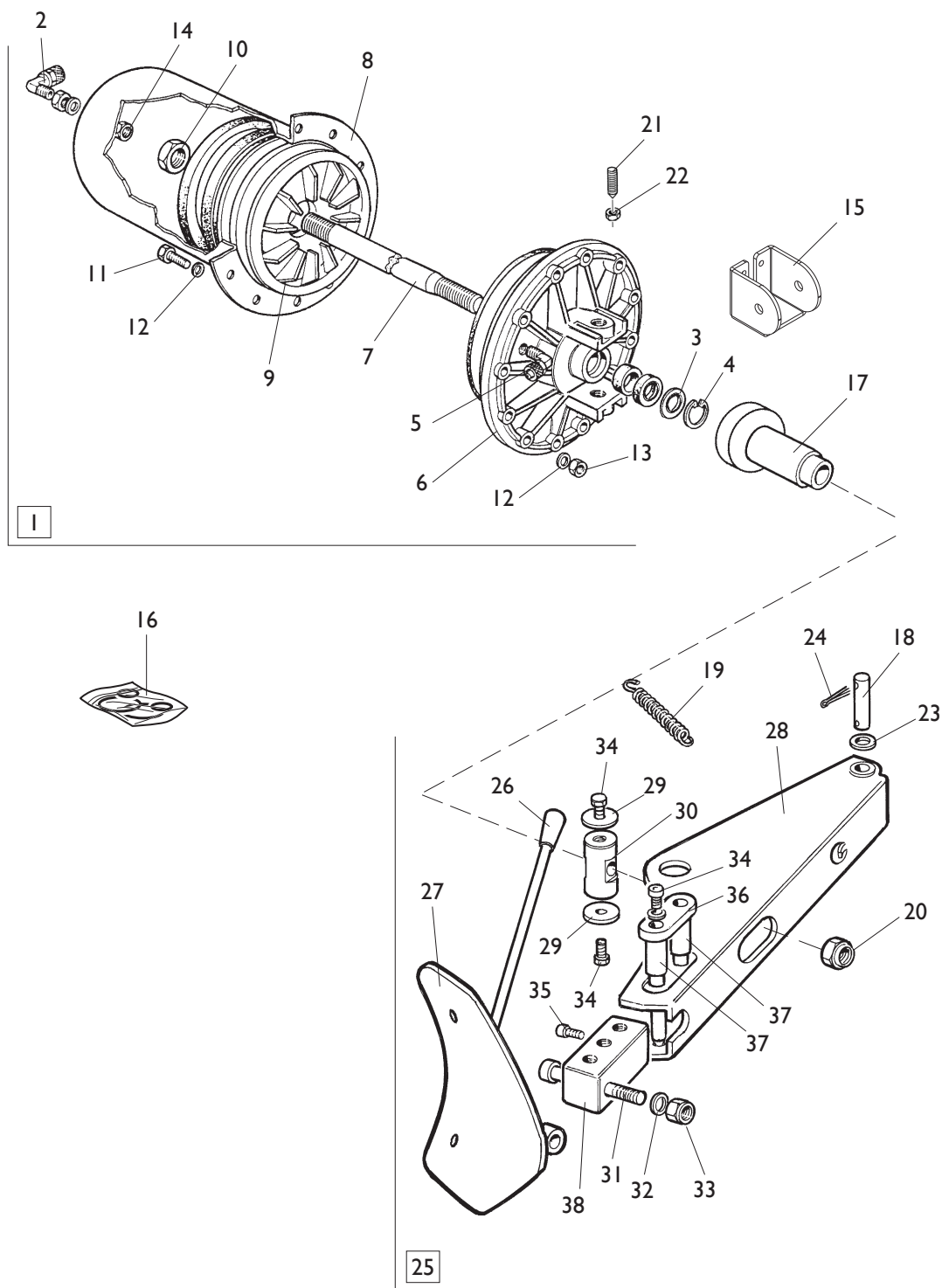
GRUPPO CASSONE FRAME GROUP



**TORNA AL COMPLESSIVO
RETURNS TO OVERALL**

| Rif. Ref. | Codice Code | Descrizione | Description |
|--------------|----------------|-----------------------------|---------------------------------|
| 1 | 423405 | CONTENITORE | LUBE BUCKET |
| 2 | 436199 | APPOGGIO CERCHIO LUNGO | RIM SUPPORT |
| 3 | 422019 | PIEDE | FOOT |
| 4 | 315522 | SUPPORTO CONTENITORE GRASSO | SUPPORT |
| 5 | 429006 | TAPPO | CAP |
| 6 | 2-01223 | VTE M6X16 | HEXAGON HEAD SCREW M6X16 |
| 7 | 2-00127 | DADO M6 | HEXAGON NUT M6 |
| 8 | 339456 | PERNO MANIGLIA | HANDLE PIN |
| 9 | 425219 | MANOPOLA | HANDLE |
| 10 | 339046 | PERNO CORTO | SHORT PIN |
| 11 | 341176 | COFANO | COVER |
| 12 | 239050 | BIELLA | ROD |
| 13 | 238911 | PROLUNGA APPOGGIO | EXTENTION |
| 14 | 2-01045 | RONDELLA D.16 | WASHER D.16 |
| 15 | 2-01885 | VTSPEI M6X25 | CSK SCREW SOCKET M6X25 |
| 16 | 2-00047 | COPIGLIA D.3X30 | PLUG D.3X30 |
| 17 | 2-00310 | VTCEI M6X20 | HEXAGON SOCKET HEAD SCREW M6X20 |
| 18 | 2-00211 | RONDELLA D.6 | WASHER D.6 |
| 19 | 418135 | ADESIVO ROTAZIONE | ROTATION LABEL |
| 20 | 461236 | ADESIVO CORGHI | CORGHI LABEL |
| 21 | 460384 | ADESIVO CORGHI | CORGHI LABEL |
| 22 | 5-104791 | KIT ADESIVI A9824TI | LABEL KIT A9824TI |
| 23 | 429976 | COVER | FRONT COVER |

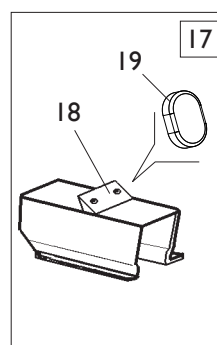
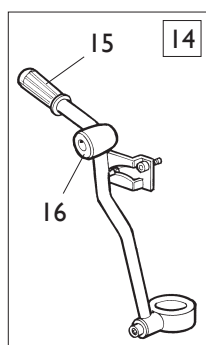
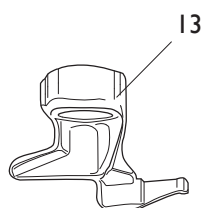
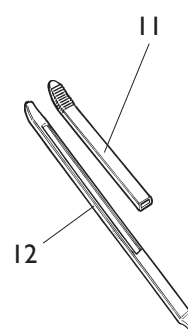
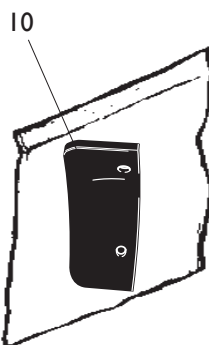
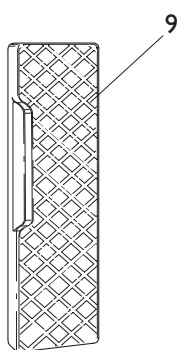
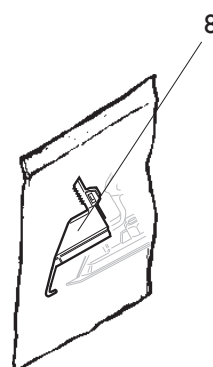
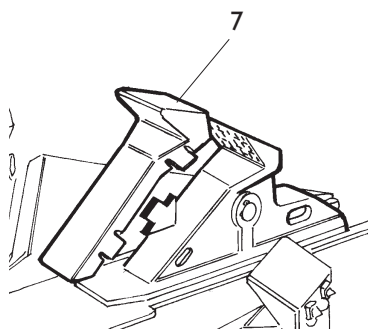
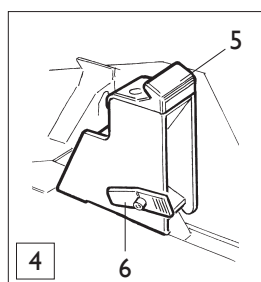
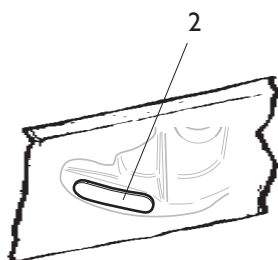
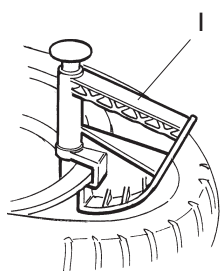
GRUPPO STALLONATORE BEAD BREAKING GROUP



[TORNA AL COMPLESSIVO](#)
[RETURNS TO OVERALL](#)

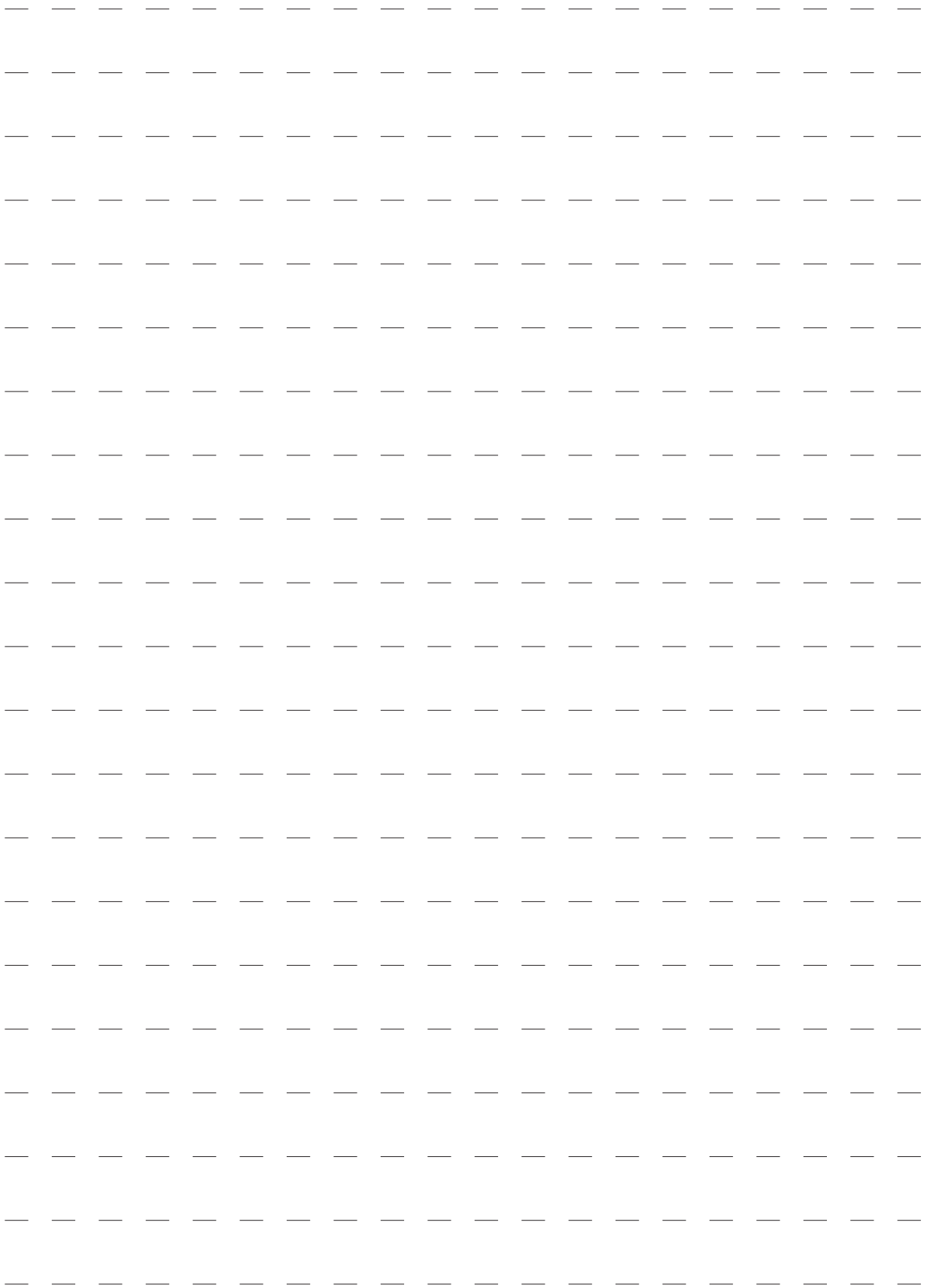
| Rif. Ref. | Codice Code | Descrizione | Description |
|--------------|----------------|-------------------------------------|---------------------------------|
| 1 | 5-100484 | CILINDRO STALLONATORE | BEAD BREAKER CYLINDER |
| 2 | 3-00517 | RACCPN-LO GI/4GO T10 | LO-FITTING GI/4GO T10 |
| 3 | 325561 | RONDELLA D.24X29,8X0,5 | WASHER D.24X29,8X0,5 |
| 4 | 434031 | ANELLO D.30 | SEGER D.30 |
| 5 | 3-00222 | RACCPN-L GI/4C T10 | L-FITTING GI/4C T10 |
| 6 | 351905 | FALNGIA D.186 | FLANGE D.186 |
| 7 | 4-101628 | STELO D.20X515 | STEM D.20X515 |
| 8 | 330190 | CILINDRO D.186 | CYLINDER D.186 |
| 9 | 337848 | PISTONE D.186X44 | PISTON D.186X44 |
| 10 | 2-00989 | DADO ES. M18X1,5 | HEXAGON NUT M18X1,5 |
| 11 | 2-00310 | VTCEI M6X20 | HEXAGON SOCKET HEAD SCREW M6X20 |
| 12 | 2-00211 | RONDELLA D.6 | WASHER D.6 |
| 13 | 436779 | DADO ES.A. M6 | AUTOLOCKING HEXAGON NUT M6 |
| 14 | 333524 | DADO 1/4 | NUT 1/4 |
| 15 | 4-101742 | SUPPORTO BRACCIO | ARM SUPPORT |
| 16 | 238212 | KIT GUARNIZIONI CILINDRO D.186 | SEAL KIT CYLINDER D.186 |
| 17 | 239061 | TAMPONE DISTANZIALE | SPACER |
| 18 | 323903 | FULCRO BRACCIO STALLONATORE | FULCRUM PIN |
| 19 | 4-104313 | MOLLA TRAZIONE D.23X3X133 | SPRING D.23X3X133 |
| 20 | 2-01242 | DADO ES.A. M18X1,5 | AUTOLOCKING HEXAGON NUT M18X1,5 |
| 21 | 431864 | VITE SPECIALE FISS. CILINDRO M14X42 | SPECIAL SCREW M14X42 |
| 22 | 2-00992 | DADO ES. M14 | HEXAGON NUT M14 |
| 23 | 2-01045 | RONDELLA D.16 | WASHER D.16 |
| 24 | 435055 | COPIGLIA D.2X40 | PLUG D.2X40 |
| 25 | 245743 | BRACCIO STALLONATORE | BEAD BREAKER ASSEMBLY |
| 26 | 425219 | MANOPOLA | KNOB |
| 27 | 224000 | PALETTA | BEAD BREAKER |
| 28 | 245701 | BRACCIO | ARM |
| 29 | 323901 | RONDELLA D. 8,25X40X3 | WASHER D. 8,25X40X3 |
| 30 | 339045 | PERNO ORIENTABILE | PIN |
| 31 | 324008 | VITE SPECIALE M12X90 | SPECIAL SCREW M12X90 |
| 32 | 2-02249 | RONDELLA ELASTICA 13X24 | ELASTIC WASHER 13X24 |
| 33 | 422255 | DADO AUTOFR. TRISTOP M12 | TRISTOP AUTOLOCKING NUT M12 |
| 34 | 2-00372 | VTE M8X12 | HEXAGON HEAD SCREW M8X12 |
| 35 | 2-01006 | VTCEI M6X8 | HEXAGON SOCKET HEAD SCREW M6X8 |
| 36 | 345616 | FISSAGGIO PUNTE | LOCKING PEAK RETAINER |
| 37 | 345617 | PUNTA DI BLOCCAGGIO | PEAK RETAINER |
| 38 | 345618 | BLOCCHETTO PROLUNGA | EXTENTION BLOCK |

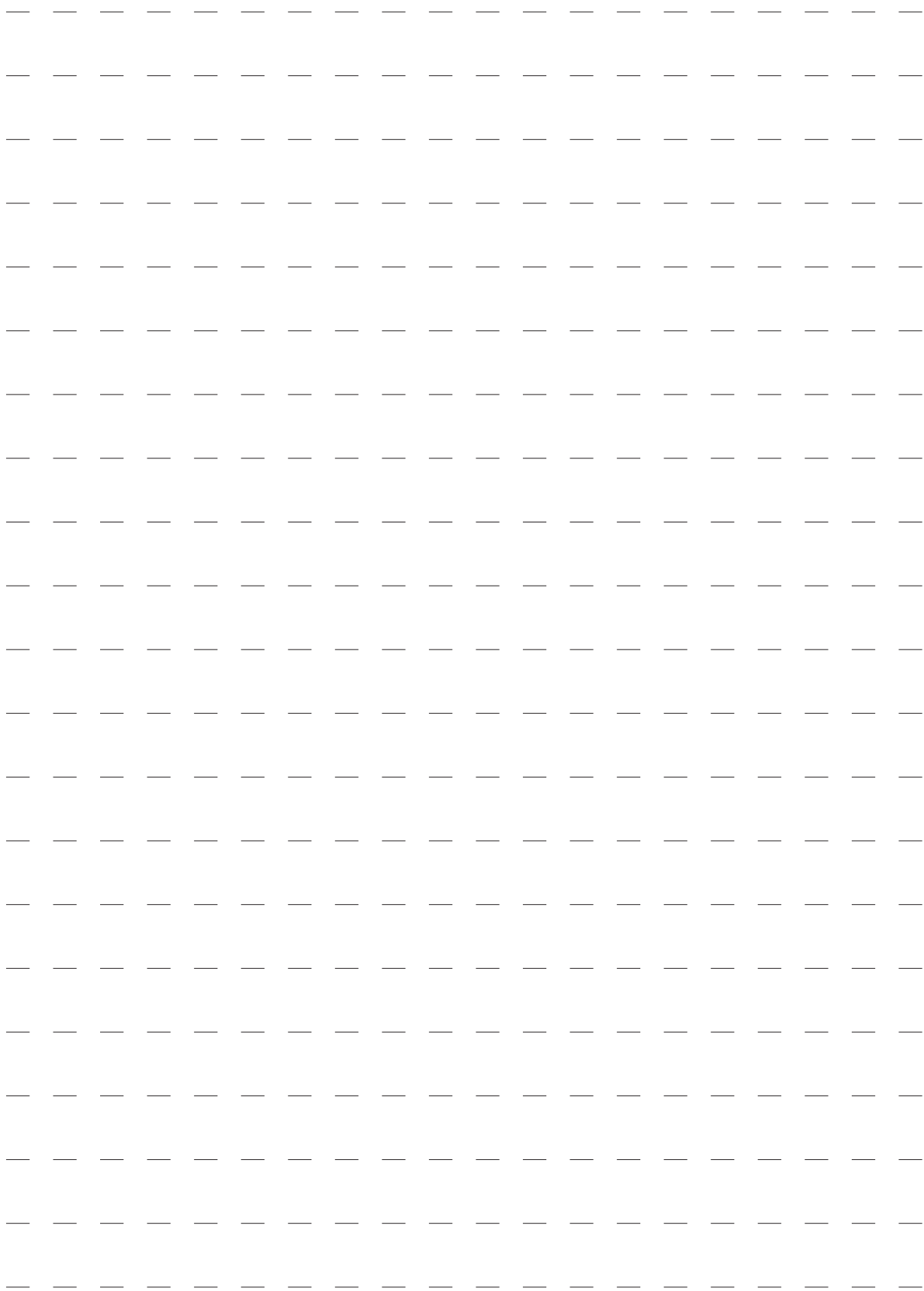
ACCESSORI ACCESSORIES



[TORNA AL COMPLESSIVO](#)
[RETURNS TO OVERALL](#)

| Rif. Ref. | Codice Code | Descrizione | Description |
|--------------|----------------|------------------------------------|------------------------------------|
| 1 | 801435685 | PINZA PREMITALLONE | PLIERS MOUNTING TOOL |
| 2 | 8-11100107 | KIT 5 PASTIGLIE TORRETTA | PROTECTION HEAD KIT (5 PZ) |
| 3 | 8-11100106 | KIT 10 INSERTI TORRETTA | PROTECTION HEAD KIT (10 PZ) |
| 4 | 801258650 | KIT 4 ATTACCHI MOTO 15-23" | MOTO ADAPTOR KIT 15-23" (4 PZ) |
| 5 | 435202 | CUNEO BLOCCAGGIO MOTO 15-23" | PLASTIC WEDGE 15-23" |
| 6 | 426746 | CRICCHETTO DI BLOCCAGGIO | LOCKING |
| 7 | 8-11100108 | KIT 12 PROTEZIONI INTERNE | INTERNAL PROTECTION KIT (12 PZ) |
| 8 | 8-11100109 | KIT 12 PROTEZIONI ESTERNE | EXTERNAL PROTECTION KIT (12 PZ) |
| 9 | 801458663 | PROTEZIONE APPOGGIO CERCHIO | RIM PROTECTION |
| 10 | 8-11100105 | KIT 6 PROTEZIONI PALETTA | BEAD BREAKER PROTECTION KIT (6 PZ) |
| 11 | 8-11100104 | KIT 6 PROTEZIONI LEVA | LEVER PROTECTION KIT (6 PZ) |
| 12 | 4-108275 | LEVA | LEVER |
| 13 | 801252083 | KIT TORRETTA 8" | HEAD KIT 8" |
| 14 | 801242834 | LEVA PREMITALLONE | LEVER |
| 15 | 425219 | MANOPOLA | KNOB |
| 16 | 440600 | TESTINA | HEAD |
| 17 | 801263517 | KIT 4 ATTACCHI MOTO 8-24" | MOTO ADAPTOR KIT 8-24" |
| 18 | 318916 | CUNEO BLOCCAGGIO MOTO 8-24" | PLASTIC WEDGE 8-24" |
| 19 | 413163 | INSERTO CUNEO 8-24" | WEDGE INSERT 8-24" |







Via per Carpi, n°9 - 42015 Correggio (RE) ITALY
Tel. ++39 0522 639111 - Fax ++39 0522 639150
www.corgchi.com - info@corgchi.com

Code 4-I03962E

Production date : 09 / 2014

Il disegno è realizzato con tutti i particolari ma solo quelli codificati sono forniti come ricambi. L'Azienda si riserva la facoltà di apportare modifiche senza preavviso.

The drawing shows all parts but only the coded parts are supplied as spares. The Company reserves the right to make modifications without prior notice.