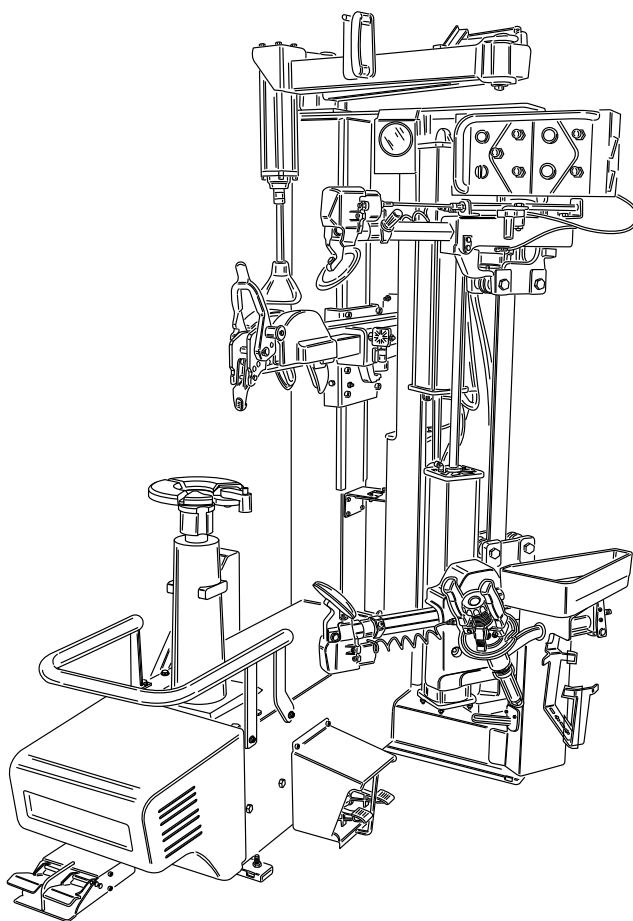


ARTIGLIO 5000

Pezzi di ricambio / Spare parts list



Code: 4-122511

Production date: 01 / 2018



www.corghi.com - info@corghi.com

I

Sul presente documento sono stati evidenziati con colore grigio i ricambi consigliati

EN

In this document, the recommended spare parts have been highlighted in gray

DE

Im vorliegenden Dokument wurden die empfohlenen Ersatzteile in grauer Farbe hervorgehoben.

FR

Dans ce document, les pièces de rechange préconisées sont soulignées en gris.

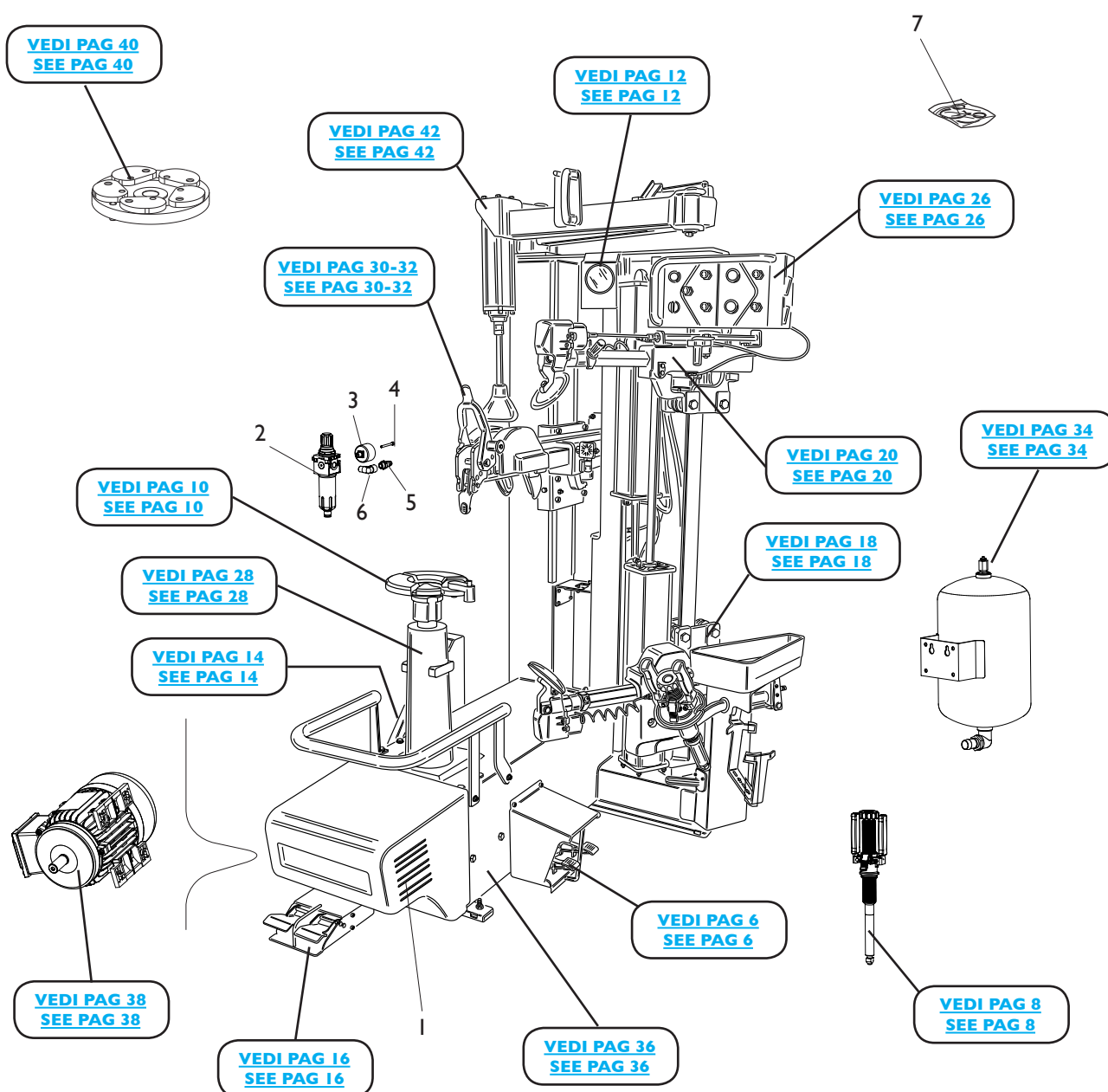
SOMMARIO

CONTENTS

COMPLESSIVO ARTIGLIO 5000	
ARTIGLIO 5000 OVERALL	4
GRUPPO PEDALIERA	
PEDAL GROUP	6
MANIGLIA BLOCCAGGIO RUOTA	
HANDLE LOCKING WHEEL	8
GRUPPO AUTOCENTRANTE	
TURNTABLE GROUP	10
GRUPPO MANOMETRO	
GAUGE GROUP	12
GRUPPO SOLLEVATORE	
LIFTER GROUP	14
GRUPPO PEDALIERA SOLLEVATORE	
PEDAL LIFTER GROUP	16
GRUPPO CARRELLI STALLONATORE	
BEAD BREAKER CARRIAGES GROUP	18
GRUPPO BRACCI STALLONATORI	
BEAD ARMS GROUP	20
DISCO STALLONATORE SUPERIORE	
UPPER BEAD BREAKER DISC	22
DISCO STALLONATORE INFERIORE	
LOWER BEAD BREAKER DISC	24
GRUPPO CONSOLLE COMANDI	
COMMAND CONSOLLE GROUP	26
GRUPPO RIDUTTORE CON MOTORE	
GROUP GEARBOX WITH MOTOR	28
GRUPPO UTENSILE	
TOOL GROUP	30
GRUPPO UTENSILE	
TOOL GROUP	32
GRUPPO T.I. SYSTEM	
T.I. SYSTEM GROUP	34
GRUPPO COVER	
COVER GROUP	36
IMPIANTO ELETTRICO	
ELECTRICAL SYSTEM	38
ACCESSORI	
ACCESSORIES	40
GRUPPO PREMITALLONE	
BEAD DEPRESSOR GROUP	42

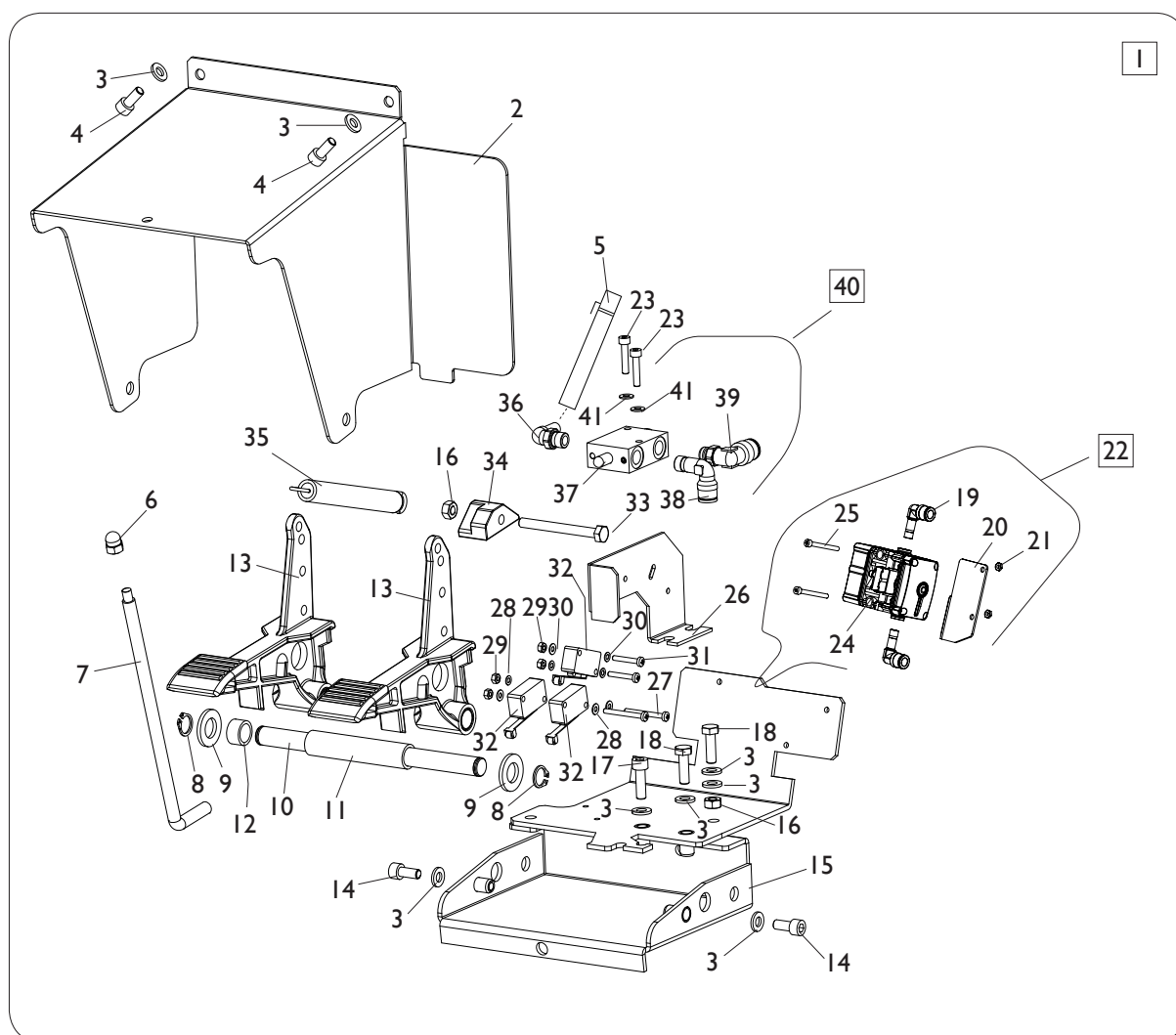
COMPLESSIVO ARTIGLIO 5000

ARTIGLIO 5000 OVERALL



Rif. Ref.	Codice Code	Descrizione	Description
1	5-122215	CARTER MOTORE	MOTOR COVER
2	3-00346	FILTRO COMPLETO	FILTER ASSEMBLY
3	3-00488	MANOMETRO D.40 BAR/PSI	PRESSURE GAUGE D.40 BAR/PSI
4	2-02286	VTCEI M4X45	HEXAGON SOCKET HEAD SCREW M4X45
5	3-00086	RACCPN-D-G1/4-GR7	D-FITTING-G1/4-GR7
6	3-00136	RACCPN-GIUNZIONE-L-G1/4C-G1/4 M/F	L-FITTING-G1/4C-G1/4 M/F
7	5-122216	KIT ADESIVI ARTIGLIO 5000	ARTIGLIO 5000 LABELS KIT

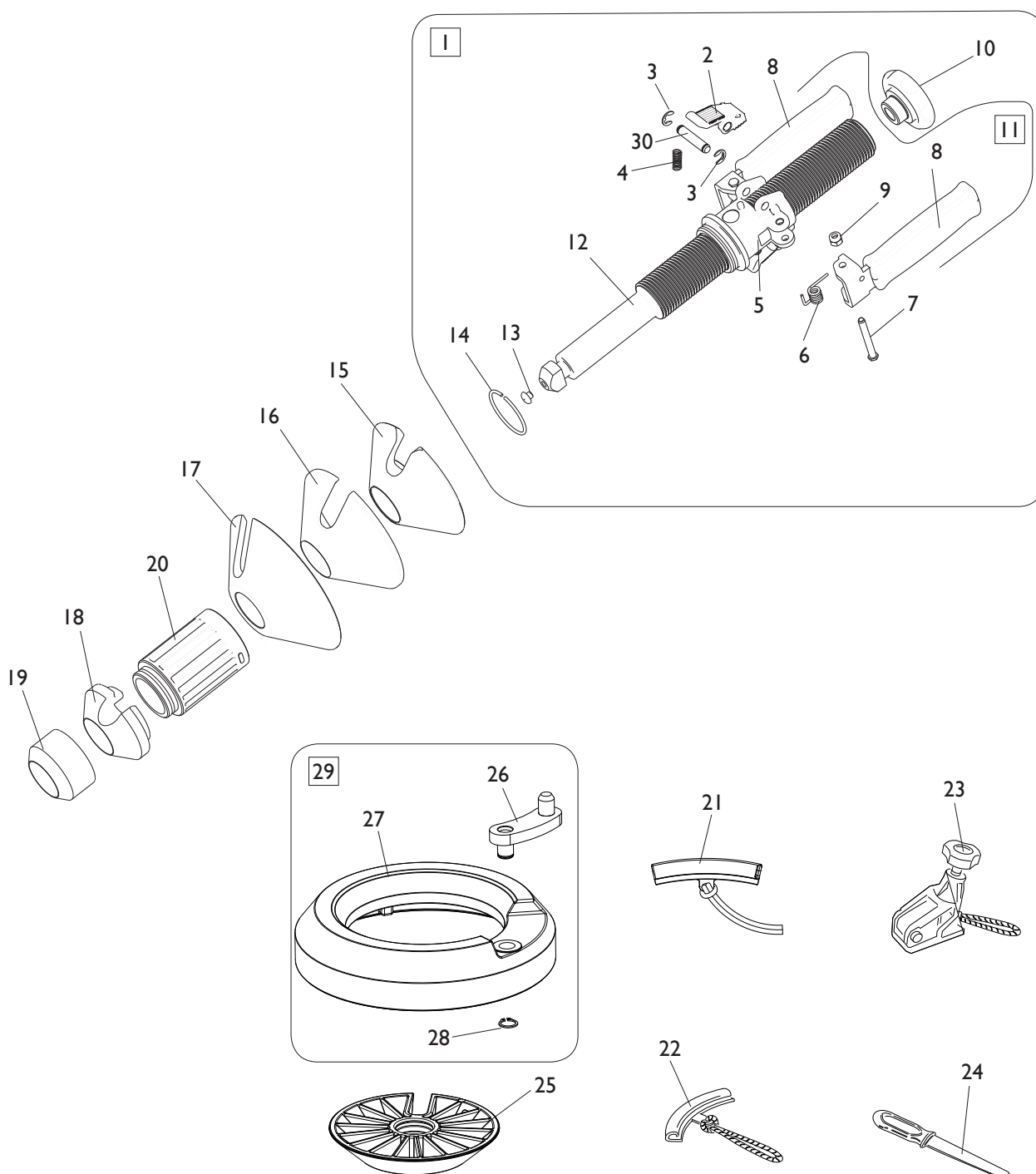
GRUPPO PEDALIERA PEDAL GROUP



[TORNA AL COMPLESSIVO](#)
[RETURNS TO OVERALL](#)

Rif. Ref.	Codice Code	Descrizione	Description
1	5-108304	PEDALIERA COMANDI COMPLETA	PEDAL ASSEMBLY
2	4-118200	COPERCHIO PEDALIERA	PEDAL COVER
3	2-00211	RONDELLA D.6	WASHER D.6
4	2-00309	VTCEI M6X16	CIRCULAR SOCKET HEAD SCREW M6X16
5	5-100129	TUBO DI GONFIAGGIO	INFLATING HOSE
6	2-00104	DADO ES.CIECO M6	HEXAGON NUT M6
7	361537	TONDO D.8	PIN D.8
8	2-00025	ANELLO D.12	SEEGER D.12
9	2-00214	RONDELLA D.14	WASHER D.14
10	4-103656	PERNO	PIN
11	340313	DISTANZIALE PEDALI	PEDALS SPACER
12	4-103658	DISTANZIALE FORATO D.12,1X16X9	SPACER D.12,1X16X9
13	5-102714	PEDALE	PEDAL
14	2-00728	VTCEI M6X14	CIRCULAR SOCKET HEAD SCREW M6X14
15	5-120136	BASAMENTO PEDALIERA	PEDAL BASE
16	2-00150	DADO ES.N. M6	NORMAL HEXAGON NUT M6
17	2-00310	VTCEI M6X20	CIRCULAR SOCKET HEAD SCREW M6X20
18	2-00362	VTE M6X20	HEXAGON SOCKET HEAD SCREW M6X20
19	3-03504	RACCPN-GOMITO-T-T-T8	FITTING T-T-T8
20	4-121270	STAFFA VALVOLA GONFIAGGIO	BRACKET
21	2-02804	DADO ES. M4	HEXAGON NUT M4
22	5-107453	LIMITATORE DI GONFIAGGIO CPL.	LIMITER INFLATION ASSEMBLY
23	2-00291	VTCEI M4X20	CIRCULAR SOCKET HEAD SCREW M4X20
24	3-03313	LIMITATORE DI GONFIAGGIO	LIMITER INFLATION
25	2-00851	VTCEI 1/2F M4X40	CIRCULAR SOCKET HEAD SCREW 1/2F M4X40
26	361524	LAMIERA SUPPORTO MICRO	MICRO SUPPORT
27	2-00578	VTCIC M3X30	SCREW M3X30
28	2-00208	RONDELLA D.3	WASHER D.3
29	2-00124	DADO ES.A. M3	AUTOLOCKING HEXAGON NUT M3
30	2-71547	ROSETTA D.3	WASHER D.3
31	2-00576	VTCIC M3X20	SCREW M3X20
32	440874	MICRO	MICROSWITCH
33	2-00369	VTE M6X60	HEXAGON SOCKET HEAD SCREW M6X60
34	461535	BLOCCHETTO MICRO	BLOCK
35	4-109664	MOLLA COMANDO INTERRUETTORE	COMMAND SPRING
36	3-01176	RACCPN-RESCA-L-G1/8-T6	RESCA FITTING 1/8
37	3-01178	VALVOLA	VALVE
38	3-00218	RACCPN-L-G1/8C-T8	FITTING 1/8
39	3-00049	RACCPN-LO-G1/8G-T8	FITTING 1/8
40	5-100628	VALVOLA DI GONFIAGGIO	INFLATING VALVE
41	2-00209	RONDELLA D.4	WASHER D.4

MANIGLIA BLOCCAGGIO RUOTA HANDLE LOCKING WHEEL

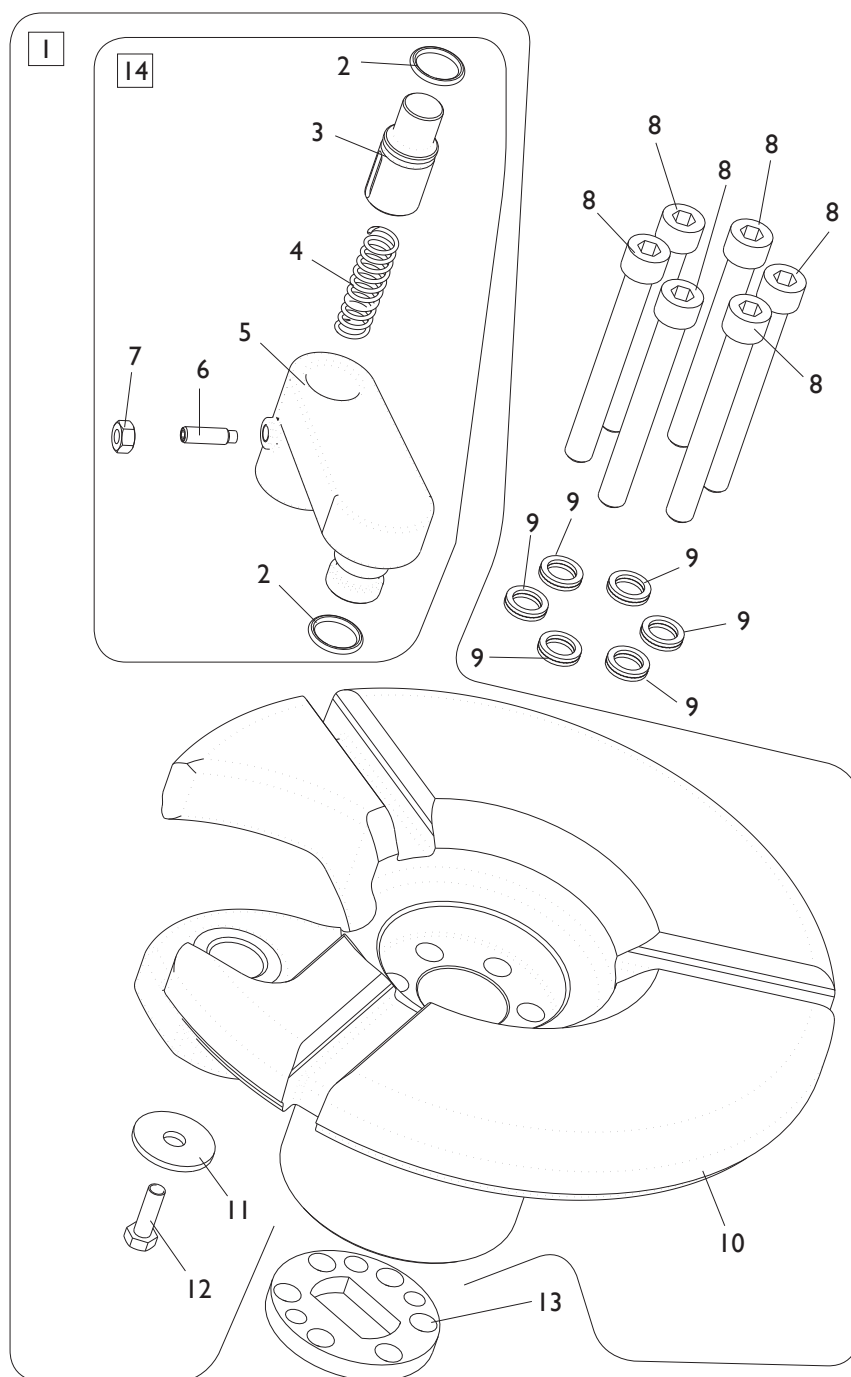


[TORNA AL COMPLESSIVO](#)
[RETURNS TO OVERALL](#)

Rif. Ref.	Codice Code	Descrizione	Description
1	5-101197	MANIGLIA BLOCCAGGIO RUOTA	HANDLE LOCKING WHEEL ASSEMBLY
2	4-104822	CRICCHETTO GHIERA D.8	CLAMPING NUT
3	2-00021	SEEGER D.8	SEEGER D.8
4	4-103675	MOLLA D.8X20X1	SPRING D.8X20X1
5	4-103226	CORPO GHIERA SERRAGGIO	BODY
6	4-103673	MOLLA RICHIAMO LEVA	LEVER RETURN SPRING
7	4-104809	PERNO FISSAGGIO LEVA MANIGLIA	FIXING PIN LEVER HANDLE
8	5-101931	MANOPOLA CON LEVA	HANDLE WITH LEVER
9	2-01257	DADO ES.N.A. M6	NORMAL AUTOLOCKING HEXAGON NUT M6
10	4-103669	MANOPOLA D.60 M24 NERA	BLACK HANDLE D.60 M24
11	5-103532	GHIERA DI SERRAGGIO	CLAMPING NUT
12	4-103668	BARRA BLOCCAGGIO RUOTA	LOCKING WHEEL BAR
13	461560	PROTEZIONE	RUBBER
14	4-119835	ANELLO TONDO D.50X45X2,5	RING D.48X2,5 D.50X45X2,5
15	4-103230	CONO D.120	CONE D.120
16	4-103232	CUFFIA PROTEZIONE CONO D.120	PROTECTION CONE D.120
17	4-103229	CONO D.145	CONE D.145
18	4-118294	CONO D.74	CONE D.74
19	4-103235	CONO D.58	CONE D.58
20	5-102722	PROLUNGA MANIGLIA	HANDLE EXTENTION
21	5-491007	KIT 3 PARABORDI CORTI	THREE SHORT FENDER KIT
22	2201716	KIT 3 PARABORDI	TREE FENDER KIT
23	262417	PINZA RUN FLAT	CLAMP RUN FLAT
24	4-405496	PROTEZIONE TALLONE	HEEL PROTECTION
25	4-103233	CONO D.187	CONE D.187
26	4-103110	MANOVELLA	CRANK
27	4-102360	ANELLO DISTANZIALE	SPACER RING
28	2-00026	SEEGER D.14	SEEGER D.14
29	5-100690	ANELLO DISTANZIALE COMPLETO	SPACER RING ASSEMBLY
30	4-108410	PERNO	PIN

GRUPPO AUTOCENTRANTE

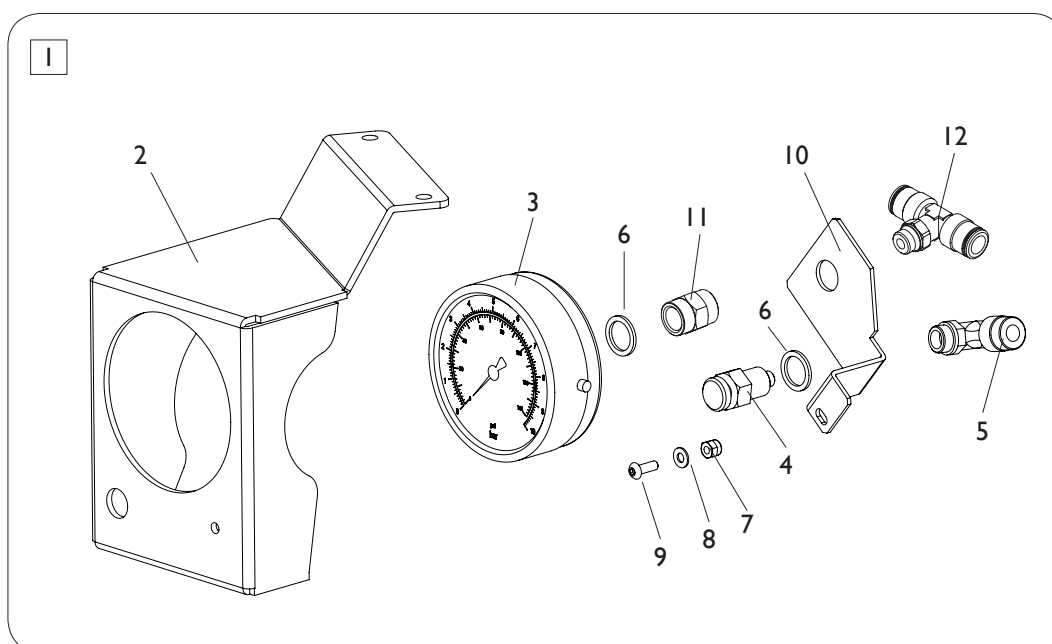
TURNTABLE GROUP



[TORNA AL COMPLESSIVO](#)
[RETURNS TO OVERALL](#)

Rif. Ref.	Codice Code	Descrizione	Description
1	5-101199	AUTOCENTRANTE COMPLETO	TURNTABLE ASSEMBLY
2	424630	OR D.12,42X1,78	O-RING D.12,42X1,78
3	4-102326	PERNO TRASCINATORE	PIN
4	4-102331	MOLLA PERNO TRASCINATORE	PIN SPRING
5	4-103143	LEVA	LEVER
6	2-02560	VSTEI M5X16	CSK SCREW SOCKET M5X16
7	2-00676	DADO ES.N. M5	NORMAL HEXAGON NUT M5
8	4-104811	VTCEI M8X70	CIRCULAR SOCKET HEAD SCREW M8X70
9	4-102752	RONDELLA ANTISVITAMENTO D.8	WASHER D.8
10	4-103152	CENTRAGGIO RUOTE	TURNTABLE
11	434168	RONDELLA D.6,6X24X2	WASHER D.6,6X24X2
12	2-00355	VTE M5X16	HEXAGON SOCKET HEAD SCREW M5X16
13	4-103142	RONDELLA AGGANCIO RAPIDO	WASHER
14	5-102707	KIT LEVA CON PERNO	LEVER KIT

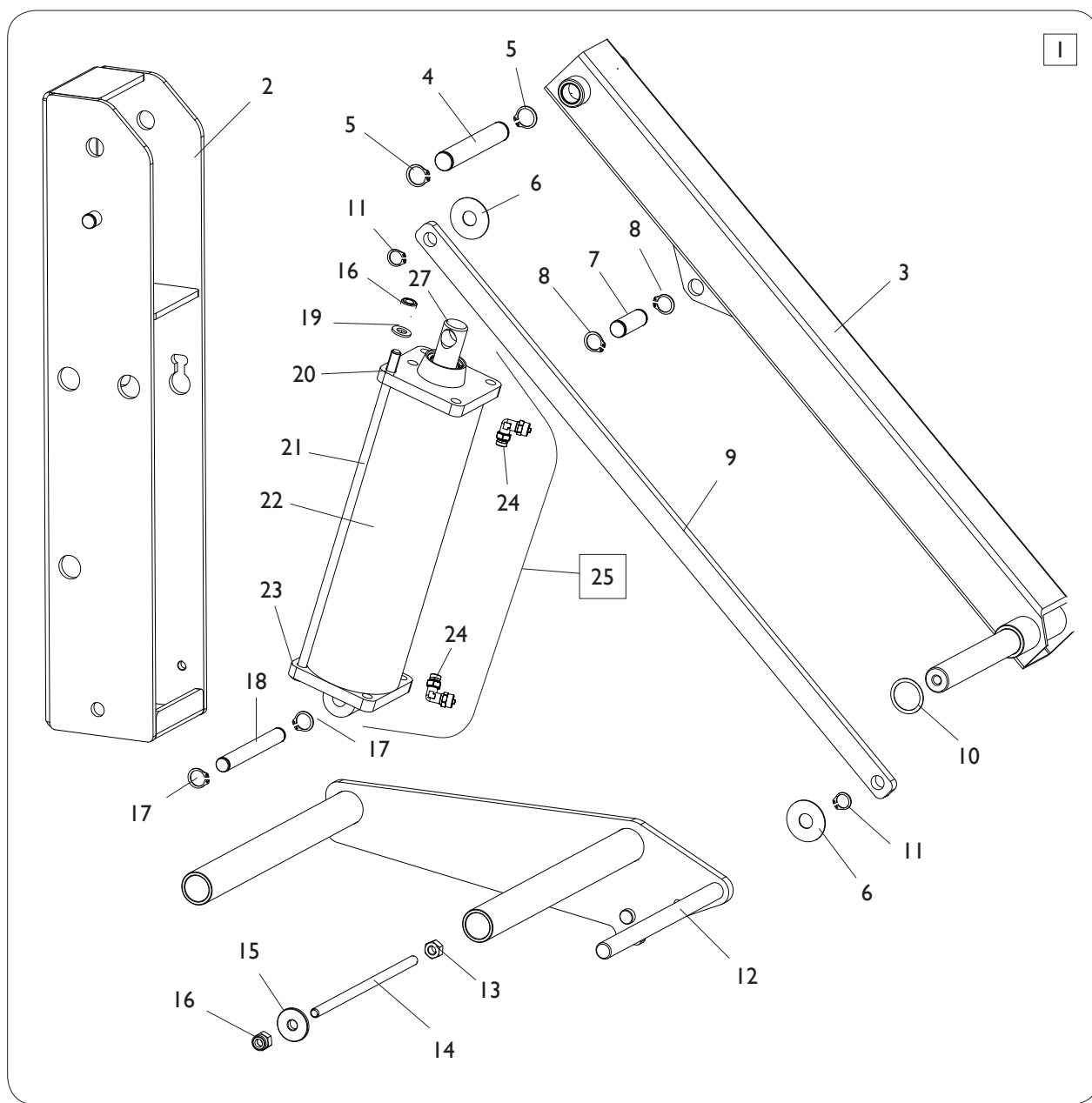
GRUPPO MANOMETRO GAUGE GROUP



[TORNA AL COMPLESSIVO](#)
[RETURNS TO OVERALL](#)

Rif. Ref.	Codice Code	Descrizione	Description
1	5-107973	COMANDO COMPLETO BAR/PSI	COMMAND ASSEMBLY BAR/PSI
2	4-122504	STAFFA SUPPORTO MANOMETRO	PLATE
3	3-00490	MANOMETRO BAR/PSI	PRESSURE GAUGE BAR/PSI
4	235463	VALVOLA SGONFIAGGIO	DEFLATION VALVE
5	3-00055	RACCPN-LO-G1/4G-T8	LO-FITTING-G1/4G-T8
6	3-00449	RONDELLA 1/4	WASHER 1/4
7	2-01018	DADO ES.A. M4	AUTOLOCKING HEXAGON NUT M4
8	2-00209	RONDELLA D.4	WASHER D.4
9	2-02146	VTBEI M4X12	SCREW M4X12
10	4-112449	SUPPORTO MANOMETRO	GAUGE PLATE
11	3-00101	RACCPN-MANICOTTO-G1/4-G1/4	FITTING G1/4-G1/4
12	3-00287	RACCPN-TO-G1/4CG-T8	T-FITTING-G1/4CG-T8

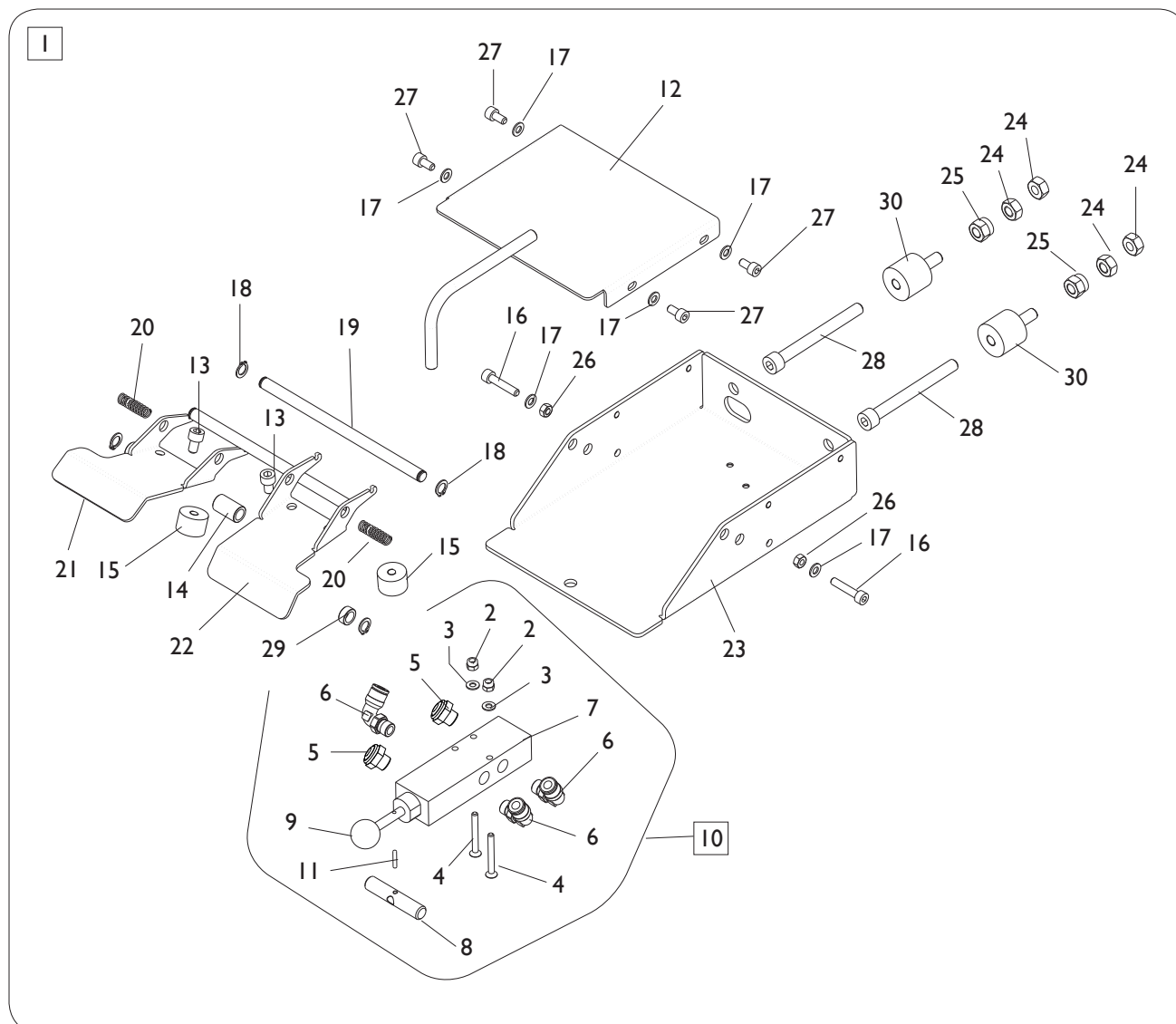
GRUPPO SOLLEVATORE LIFTER GROUP



[TORNA AL COMPLESSIVO](#)
[RETURNS TO OVERALL](#)

Rif. Ref.	Codice Code	Descrizione	Description
1	5-101212	SOLLEVATORE COMPLETO	LIFTER ASSEMBLY
2	4-103738	TELAIO SOLLEVATORE	LIFTER BODY
3	4-103733	BRACCIO SOLLEVATORE	LIFTER ARM
4	4-103725	PERNO	PIN
5	2-01130	SEEGER D.16	SEEGER D.16
6	344208	RONDELLA D.12,5X36X1	WASHER D.12,5X36X1
7	4-103723	PERNO	PIN
8	2-00026	SEEGER D.14	SEEGER D.14
9	4-103722	BIELLA	CONNECTING ROD
10	325561	RONDELLA D.24X29,8X0,5	WASHER D.24X29,8X0,5
11	2-00025	SEEGER D.12	SEEGER D.12
12	4-103728	SUPPORTO RUOTA	WHEEL SUPPORT
13	2-00151	DADO ES.N. M8	NORMAL HEXAGON NUT M8
14	4-103727	BARRA FILETTATA M8	THREADED BAR
15	4-103726	RONDELLA DI BLOCCAGGIO	WASHER
16	2-01020	DADO ES.N.A. M8	NORMAL AUTOLOCKING HEXAGON NUT M8
17	2-00026	SEEGER D.14	SEEGER D.14
18	4-103724	PERNO	PIN
19	2-00212	RONDELLA D.8	WASHER D.8
20	5-121316	FLANGIA ANT. D.75 + BOCCOLA	FRONT FLANGE D.75 WITH BUSH
21	4-130462	TIRANTE M8X295	TIE ROD M8X295
22	4-130460	CAMICIA D.75X266	LINER D.75X266
23	4-130464	FLANGIA POSTERIORE D.75	REAR FLANGE D.75
24	5-102686	RACCPN-LO-G1/8G-T6 + STROZZ. D.1,75	FITTING 1/8
25	5-101215	CILINDRO SOLLEVATORE COMPLETO	CYLINDER LIFTER ASSEMBLY
26	262382	KIT GUARNIZIONI CILINDRO D.75	SEALS KIT CYLINDER LIFTER
27	4-130459	STELO D.20X317	STEM D.20X317

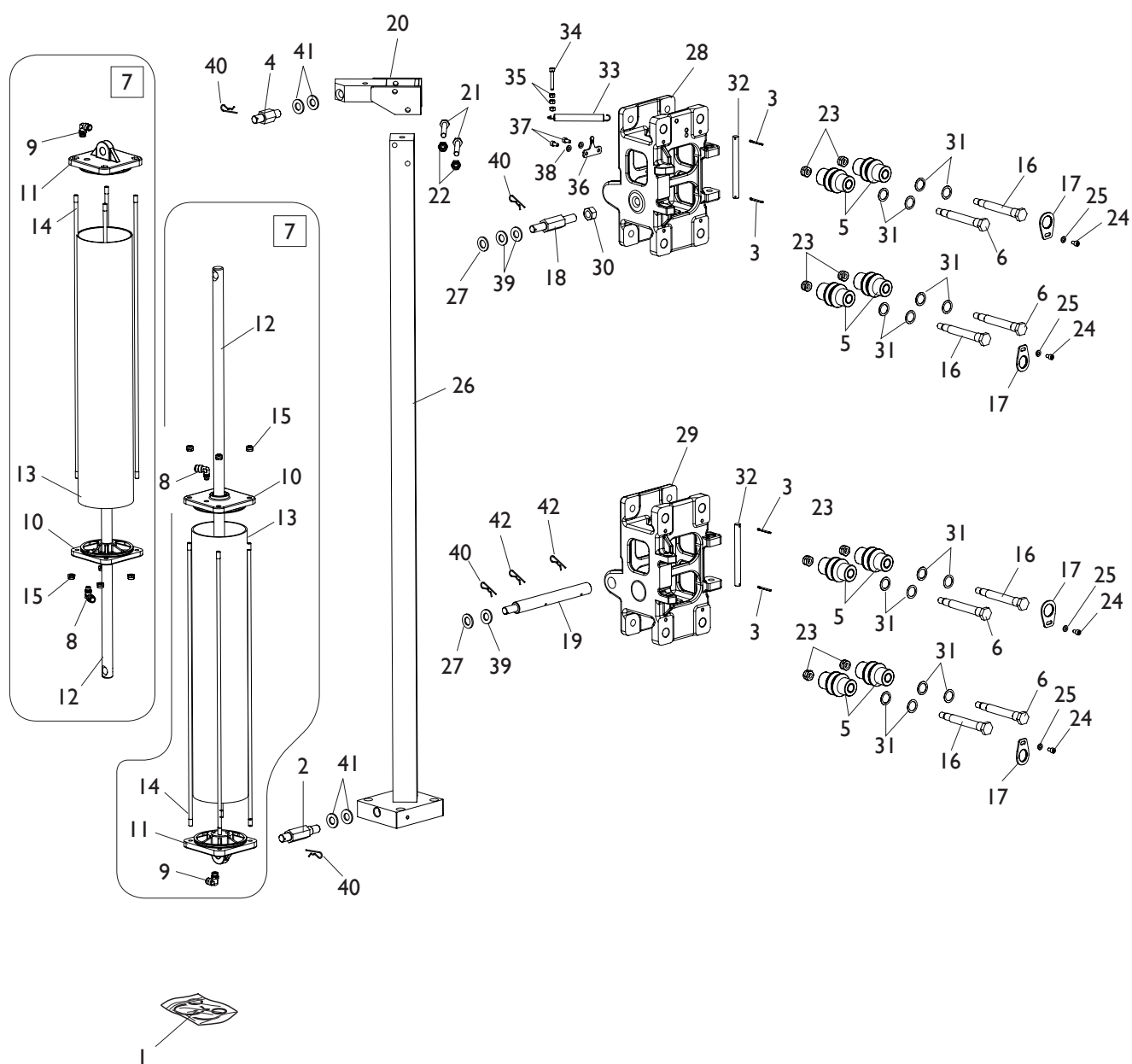
GRUPPO PEDALIERA SOLLEVATORE
PEDAL LIFTER GROUP



TORNA AL COMPLESSIVO
RETURNS TO OVERALL

Rif. Ref.	Codice Code	Descrizione	Description
1	5-101213	PEDALIERA SOLLEVATORE COMPLETA	PEDAL LIFTER ASSEMBLY
2	2-01018	DADO ES.N.A. M4	NORMAL AUTOLOCKING HEXAGON NUT M8
3	2-00209	RONDELLA D.4	WASHER D.4
4	2-01212	VTSPEI M4X35	CSK SCREW FLAT SOCKET M4X35
5	3-00181	SILENZIATORE 1/8	SILENCER 1/8
6	3-00053	RACCPN-LO-G1/8G-T6	FITTING 1/8
7	3-01642	VALVOLA SOLLEVATORE	LIFTER VALVE
8	4-103750	PERNO AZIONAMENTO VALVOLA	VALVE PIN
9	3-03029	POMOLO	KNOB
10	5-102696	VALVOLA SOLLEVATORE COMPLETA	LIFETR VALVE ASSEMBLY
11	2-01201	SPINA D.2,5X16	PIN D.2,5X16
12	4-103747	COPERTURA PEDALIERA	PEDAL COVER
13	2-00308	VTCEI M6X10	CIRCULAR SOCKET HEAD SCREW M6X10
14	4-103746	DISTANZIALE FORATO D.12X8,2X20	SPACER D.12X8,2X20
15	441675	ANTIVIBRANTE 20X13 M6X6	ANTIVIBRATION 20X13 M6X6
16	2-00299	VTCEI M5X25	CIRCULAR SOCKET HEAD SCREW M5X25
17	2-00210	RONDELLA D.5	WASHER D.5
18	2-00021	SEEGER D.8	SEEGER D.8
19	4-103742	PERNO	PIN
20	4-104551	MOLLA D.2X12X28	SPRING D.2X12X28
21	4-104835	PEDALE SOLLEVATORE SX	PEDAL LEFT
22	4-104836	PEDALE SOLLEVATORE DX	PEDAL RIGHT
23	4-103745	BASAMENTO PEDALIERA	PEDAL BASE
24	2-00151	DADO ES. M8	HEXAGON NUT M8
25	2-01020	DADO ES.A. M8	AUTOLOCKING HEAGON NUT M8
26	2-00676	DADO ES.N. M5	NORMAL HEXAGON NUT M5
27	2-00891	VTCEI M5X10	HEXAGON SOCKET HEAD SCREW M5X10
28	2-02826	VTE M8X80	HEXAGON HEAD SCREW M8X80
29	4-103744	DISTANZIALE D.12X8,2X20	SPACER D.12X8,2X20
30	4-104848	ANTIVIBRANTE 25X22 M8	ANTIVIBRATION 25X22 M8

GRUPPO CARRELLI STALLONATORE BEAD BREAKER CARRIAGES GROUP

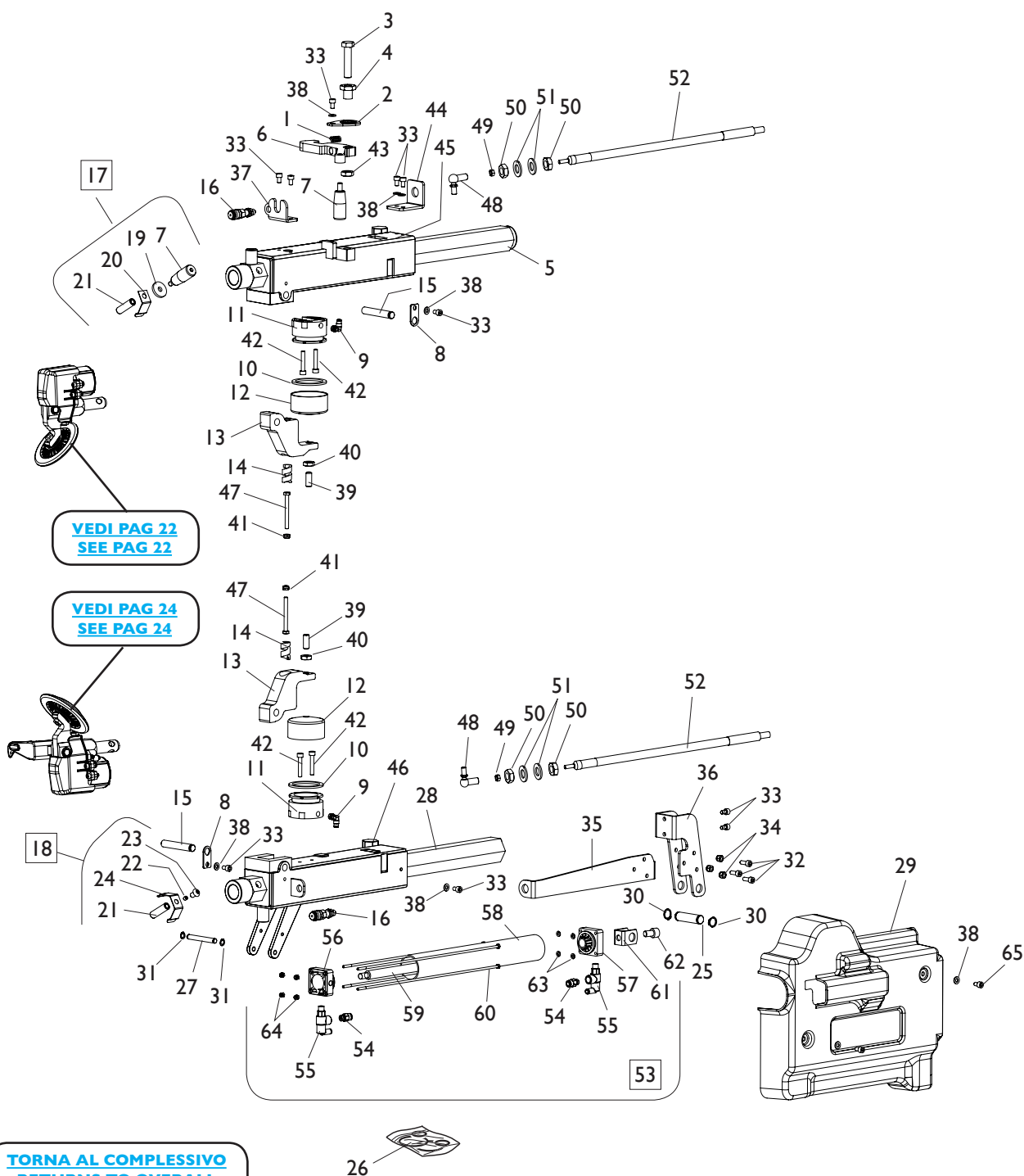


[TORNA AL COMPLESSIVO](#)
[RETURNS TO OVERALL](#)

Rif. Ref.	Codice Code	Descrizione	Description
1	245067	KIT GUARNIZIONI CILINDRO D.110	CYLINDER D.110 SEALS KIT
2	4-108234	PERNO D.16X105	PIN D.16X105
3	2-00047	COPIGLIA D.3X30	PIN D.3X30
4	4-108251	PERNO FULCRO CILINDRO	CYLINDER FULCRUM PIN
5	5-104000	RULLO CON BOCCOLA	ROLLER WITH BUSH
6	4-108167	PERNO FISSO	PIN
7	5-102902	CILINDRO CPL. D.110X538	CYLINDER ASSEMBLY D.110X538
8	3-00059	RACCPN-LO-G1/8C-T8	LO-FITTING-G1/8C-T8
9	3-00055	RACCPN-LO-G1/4M-T8	LO-FITTING-G1/4M-T8
10	5-107559	FLANGIA ANT. D.110	FRONT FLANGE D.110
11	4-130671	FLANGIA POST.D.110	REAR FLANGE D.110
12	4-130929	STELO D.22X633	STEM D.22X633
13	4-130966	CAMICIA D.110X581	LINER D.110X581
14	4-130676	TIRANTE M8X618,5	TIE ROD M8X618,5
15	2-01137	DADO ES.A. M8	AUTOLOCKING HEXAGON NUT M8
16	4-108168	PERNO ECCENTRICO	ECCENTRIC PIN
17	4-108165	LAMIERA FERMO ECCENTRICO	PLATE FOR ECCENTRIC PIN
18	4-108217	PERNO FULCRO CILINDRO	CYLINDER FULCRUM PIN
19	4-108164	PERNO CILINDRO	CYLINDER PIN
20	4-108252	STAFFA ATTACCO SUP. STALLONATORE	BEAD BRACKET
21	2-00996	VTE M10X80	HEXAGON HEAD SCREW M10X80
22	2-01019	DADO ES.A. M10	AUTOLOCKING HEXAGON NUT M10
23	2-01276	DADO ES.A. M12	AUTOLOCKING HEXAGON NUT M12
24	2-00308	VTCEI M6X10	HEXAGON SOCKET HEAD SCREW M6X10
25	2-01113	RONDELLA D.6	WASHER D.6
26	4-108233	MONTANTE STALLONATORE	BAR
27	2-01045	RONDELLA D.16	WASHER D.16
28	5-103534	CARRELLO SUPERIORE	UPPER CARRIAGE
29	5-103535	CARRELLO INFERIORE	LOWER CARRIAGE
30	2-00991	DADO ES. M16X1,5	HEXAGON NUT M16X1,5
31	429599	RONDELLA D. 20X28X0,2	WASHER D. 20X28X0,2
32	4-105687	PERNO FULCRO CONSOLLE	CONSOLLE FULCRUM PIN
33	410628	MOLLA D.14X2X105	SPRING D.14X2X105
34	2-00314	VTCEI M6X40	HEXAGON SOCKET HAED SCREW M6X40
35	2-00111	DADO ES. M6	HEXAGON NUT M6
36	4-109901	STAFFA ATTACCO MOLLA	SPRING BRACKET
37	2-02817	VTCEI M6X12	HEXAGON SOCKET HEAD SCREW M6X12
38	2-00211	RONDELLA D.6	WASHER D.6
39	354032	RONDELLA D.15,25X30X3	WASHER D.15,25X30X3
40	435055	COPIGLIA D.2X40	SPRING D.2X40
41	4-101681	RONDELLA D.17X22X1	WASHER D.17X22X1
42	2-02221	COPIGLIA D.4	SPRING D.4
43	2-01122	SEEGER D.15	ANELLO D.15
44	2-01045	RONDELLA D.16	WASHER D.16
45	2-01130	SEEGER D.16	SEEGER D.16

GRUPPO BRACCI STALLONATORI

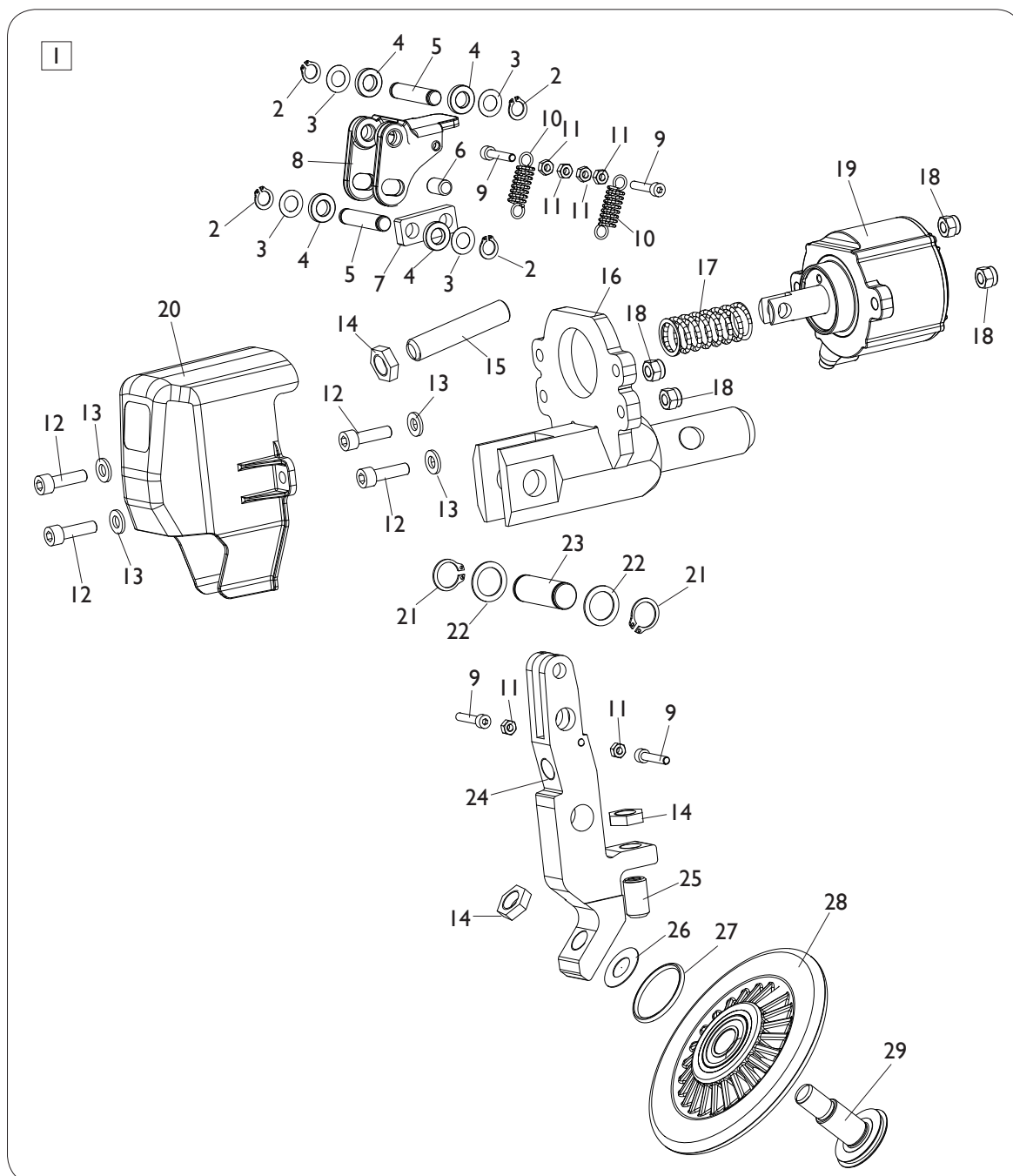
BEAD ARMS GROUP



Ref.	Code	Descrizione	Description
1	461435	MOLLA MANIGLIA	HANDLE SPRING
2	4-108219	LAMIERA FERMO ECCENTRICO	PLATE
3	2-01160	VTE 1/2F M12X55	HEXAGON HEAD SCREW 1/2F M12X55
4	4-108223	BOCCOLA ECCENTRICA	ECCENTRIC BUSH
5	4-118916	BARRA PORTA UTENSILE SUPERIORE	HEXAGON BAR

Ref.	Code	Descrizione	Description
6	4-108224	GANCIO STALLONATORE	HOOK
7	4-104541	MANOPOLA M8 H50	HANDLE M8 H50
8	4-108665	PIASTRINO	PLATE
9	3-00220	RACCPN-L-G1/8-C-T4	L-FITTING-G1/8-C-T4
10	443078	GUARNIZIONE A LABBRO D.60X47,6X6,35	O-RING D.60X47,6X6,35
11	443077	PISTONE D.60X38	PISTON D.60X38
12	326537	CILINDRO D.60	CYLINDER D.60
13	4-108218	LEVA BLOCCAGGIO	LEVER
14	431257	MOLLA COMPRESSIONE D.8X16X32	COMPRESSOR SPRING D.8X16X32
15	4-108173	PERNO L.75mm	PIN L.75mm
16	3-01645	RACCPN-D-T6/4-GR5F	D-FITTING-T6/4-GR5F
17	5-106298	PERNO BLOCC. UTENSILE SUPERIORE CPL.	UPPER TOOL PIN ASSEMBLY
18	5-106299	PERNO BLOCC. UTENSILE INFERIORE CPL.	LOWER TOOL PIN ASSEMBLY
19	307671	RONDELLA D.8,25X28X4	WASHER D.8,25X28X4
20	4-118919	STAFFA	BRACKET
21	4-118918	PERNO BLOCCAGGIO D.12X41	PIN D.12X41
22	2-02916	VSTEI M6X6	SCREW M6X6
23	2-02148	VTBEI M8X12	SCREW M8X12
24	4-105295	LAMIERINO	PLATE
25	4-108243	PERNO L.51mm	PIN L.51mm
26	5-103267	KIT GUARNIZIONI CILINDRO ACCOST.	CYLINDER SEALS KIT
27	4-108241	PERNO L.66mm	PIN L.66mm
28	4-108247	BARRA PORTA UTENSILE INFERIORE	HEXAGON BAR
29	4-108945	PROTEZIONE STALLONATORE INFERIORE	COVER
30	2-01122	SEEGER D.15	SEEGER D.15
31	2-00021	SEEGER D.8	SEEGER D.8
32	2-00309	VTCEI M6X16	HEXAGON SOCKET HEAD SCREW M6X16
33	2-01989	VTCEI M6X10	HEXAGON SOCKET HEAD SCREW M6X10
34	2-01257	DADO ES.A. M6	AUTOLOCKING HEXAGON NUT M6
35	4-108436	FORCELLA ATTACCO GUAINA CAVO	PLATE
36	4-108242	FORCELLA ATTACCO CILINDRO	PLATE
37	4-108272	STAFFA	BRACKET
38	2-00211	RONDELLA D.6	WASHER D.6
39	2-01291	VSTEI M10X25	SCREW M10X25
40	2-00157	DADO ES. M10	HEXAGON NUT M10
41	2-01979	DADO ES.A. M6	AUTOLOCKING HEXAGON NUT M6
42	2-00909	VTCEI M6X35	HEXAGON SOCKET HEAD SCREW M6X35
43	2-00158	DADO ES. M12	HEXAGON NUT M12
44	4-108216	STAFFA ATTACCO GUAINA	BRACKET
45	5-103536	SUPPORTO BRACCIO SUPERIORE	UPPER SUPPORT
46	5-103537	SUPPORTO BRACCIO INFERIORE	LOWER SUPPORT
47	2-00369	VTE M6X60	HEXAGON HEAD SCREW M6X60
48	5-105128	KIT SNODO M8	JOINT KIT M8
49	2-00146	DADO ES. M6	HEXAGON NUT M6
50	2-94030	DADO ES. M14X1,5	HEXAGON NUT M14X1,5
51	2-00215	RONDELLA D.14	WASHER D.14
52	4-108437	CAVO PUSH-PULL CORSA 280mm	PUSH-PULL CABLE 280mm
53	5-102904	CILINDRO CPL. D.40X280	CYLINDER ASSEMBLY D.40X280
54	3-00461	RACCPN-D-G1/8G-T6	D-FITTING-G1/8G-T6
55	3-03006	VALVOLA	VALVE
56	4-108322	FLANGIA POSTERIORE D.40	REAR FLANGE D.40
57	4-108323	FLANGIA ANTERIORE D.40	FRONT FLANGE D.40
58	4-108237	CAMICIA	LINER
59	4-108238	STELO D.15X333	STEM D.15X333
60	4-108239	TIRANTE M4X350	TIE-ROD M4X350
61	339908	CAVALLOTTO	PLATE
62	2-91723	VTCEI M10X16	HEXAGON SOCKET HEAD SCREW M10X16
63	2-00209	RONDELLA D.4	WASHER D.4
64	2-01018	DADO ES.A. M4	AUTOLOCKING HEXAGON NUT M4
65	2-00308	VTCEI M6X10	VTCEI M6X10

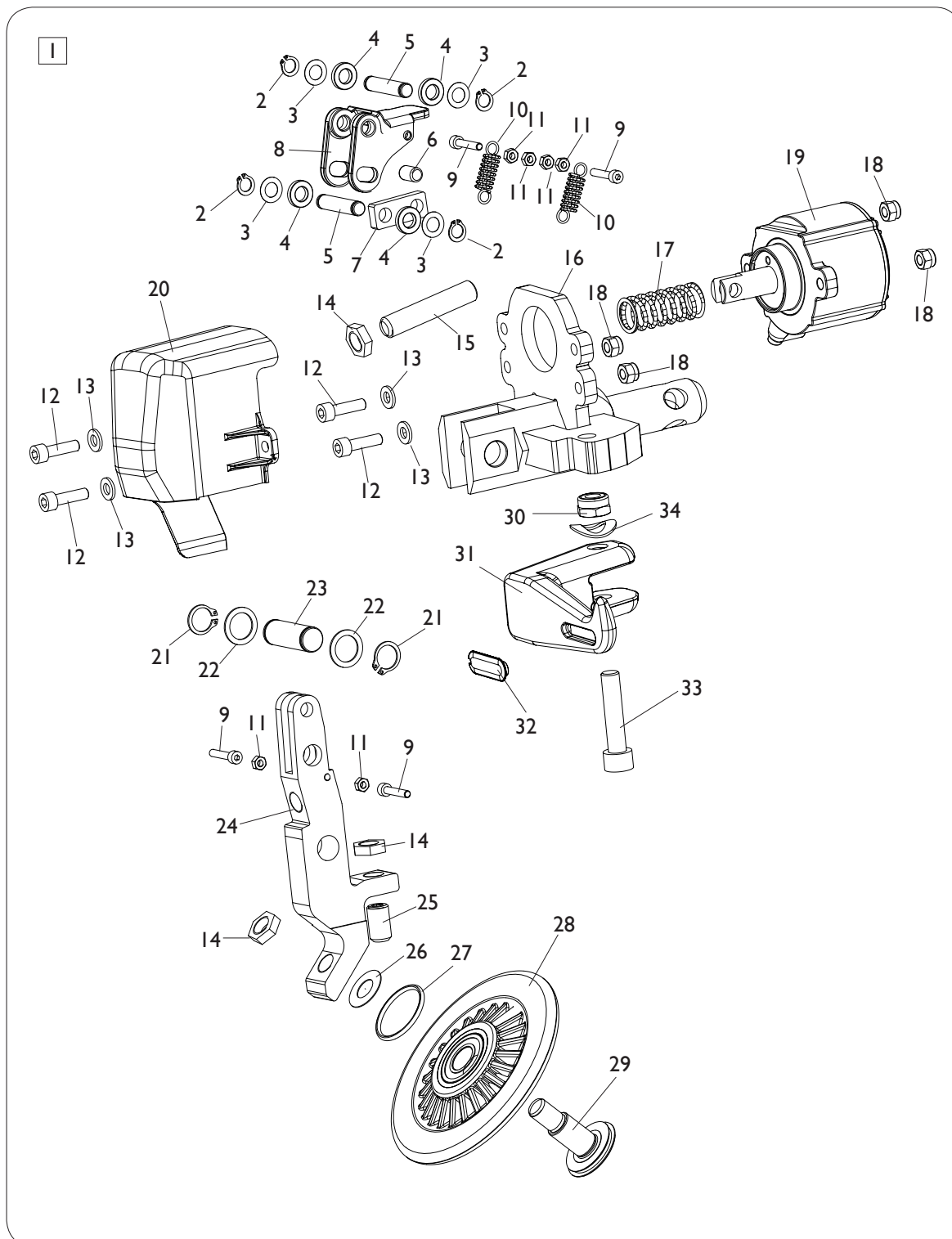
DISCO STALLONATORE SUPERIORE UPPER BEAD BREAKER DISC



[TORNA AL COMPLESSIVO](#)
[RETURNS TO OVERALL](#)

Rif. Ref.	Codice Code	Descrizione	Description
1	5-103062	DISCO STALLONATORE COMPLETO	BEAD BREAKER ASSEMBLY
2	2-00021	SEEGER D.8	SEEGER D.8
3	301694	RONDELLA D.14X8X0,2	WASHER D.14X8X0,2
4	339856	RONDELLA D.8,25X15X3	WASHER D.8,25X15X3
5	4-106224	PERNO	PIN
6	4-106234	PERNO FULCRO BIELLA	FULCRUM PIN
7	4-106199	BIELLA	CONNECTING ROD
8	4-106025	LAMIERA DI BLOCCO PENETRAZIONE	SHEET BLOCK
9	2-00927	VTCEI M4X22	CIRCULAR SOCKET HEAD SCREW M4X22
10	4-106238	MOLLA A TRAZIONE	SPRING
11	2-00143	DADO ES.N. M4	NORMAL HEXAGON NUT M4
12	2-00934	VTCEI M6X22	CIRCULAR SOCKET HEAD SCREW M6X22
13	2-00211	RONDELLA D.6	WASHER D.6
14	4-106024	DADO SPECIALE M12	SPECIAL NUT M12
15	2-02398	VSTEI M12X60	CSK SCREW SOCKET M12X60
16	4-105853	SUPPORTO	SUPPORT
17	4-106235	MOLLA D.20X45X2,2	SPRING D.20X45X2,2
18	2-01257	DADO ES.N.A. M6	NORMAL AUTOLOCKING HEXAGON NUT M6
19	5-102062	CILINDRO PNEUMATICO D.60	CYLINDER D.60
20	4-108676	CARTER	COVER
21	2-00026	SEEGER D.14	SEEGER D.14
22	435005	RONDELLA D.15X21X1	WASHER D.15X21X1
23	4-103723	PERNO	PIN
24	4-106181	SUPPORTO DISCO	DISK SUPPORT
25	2-02096	VSTEI M12X20	CSK SCREW SOCKET M12X20
26	462117	RONDELLA D.12X24X0,5	WASHER D.12X24X0,5
27	421833	OR D.29,82X2,62	O-RING D.29,82X2,62
28	5-100688	RULLO	ROLLER
29	4-106180	PERNO ANTISVITAMENTO	PIN

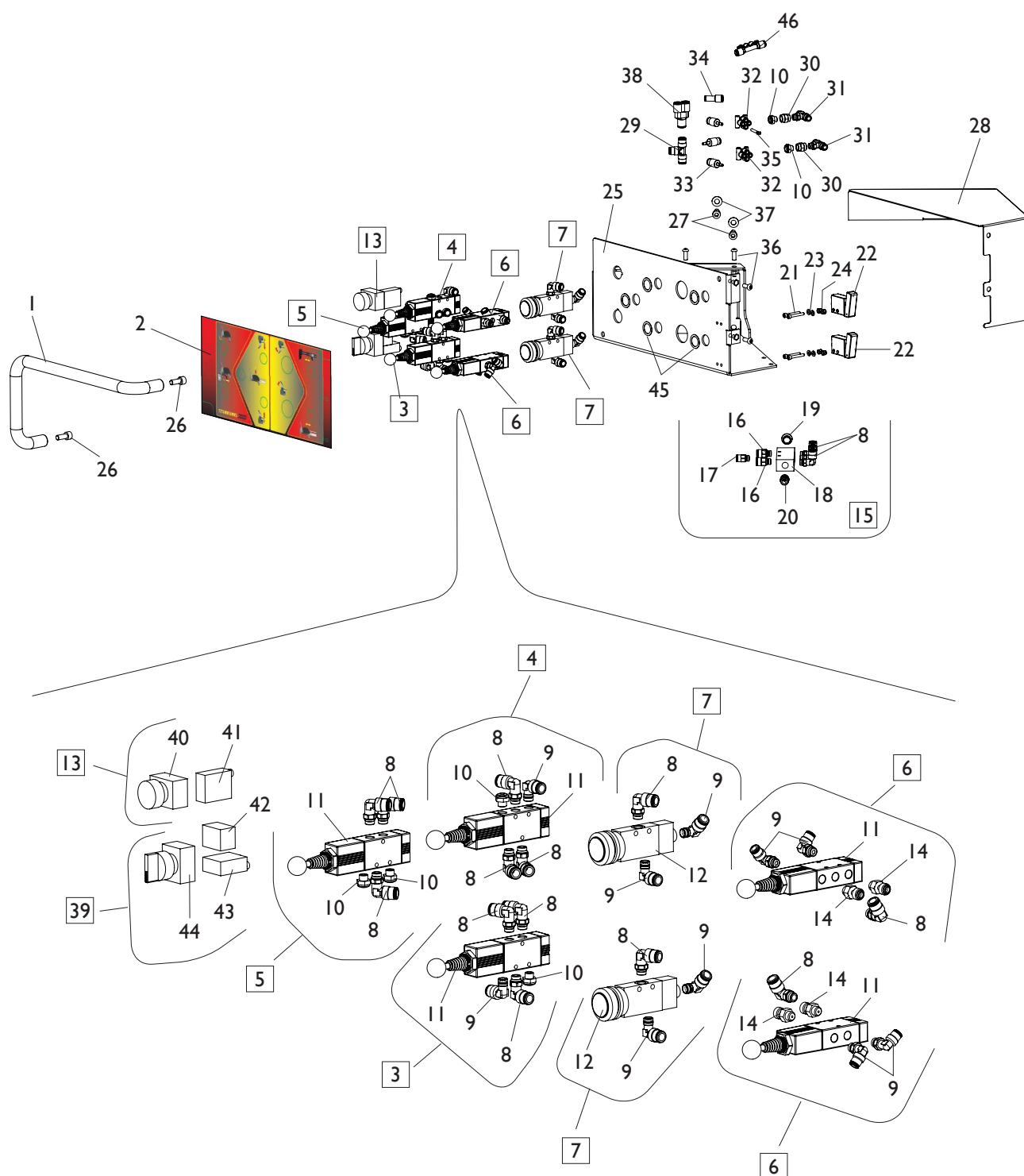
DISCO STALLONATORE INFERIORE LOWER BEAD BREAKER DISC



[TORNA AL COMPLESSIVO](#)
[RETURNS TO OVERALL](#)

Rif. Ref.	Codice Code	Descrizione	Description
1	5-107972	DISCO STALLONATORE COMPLETO	BEAD BREAKER ASSEMBLY
2	2-00021	SEEGER D.8	SEEGER D.8
3	301694	RONDELLA D.14X8X0,2	WASHER D.14X8X0,2
4	339856	RONDELLA D.8,25X15X3	WASHER D.8,25X15X3
5	4-106224	PERNO	PIN
6	4-106234	PERNO FULCRO BIELLA	FULCRUM PIN
7	4-106199	BIELLA	CONNECTING ROD
8	4-106025	LAMIERA DI BLOCCO PENETRAZIONE	SHEET BLOCK
9	2-00927	VTCEI M4X22	CIRCULAR SOCKET HEAD SCREW M4X22
10	4-106238	MOLLA A TRAZIONE	SPRING
11	2-00143	DADO ES.N. M4	NORMAL HEXAGON NUT M4
12	2-00934	VTCEI M6X22	CIRCULAR SOCKET HEAD SCREW M6X22
13	2-00211	RONDELLA D.6	WASHER D.6
14	4-106024	DADO SPECIALE M12	SPECIAL NUT M12
15	2-02398	VSTEI M12X60	CSK SCREW SOCKET M12X60
16	4-122500	SUPPORTO	SUPPORT
17	4-106235	MOLLA D.20X45X2,2	SPRING D.20X45X2,2
18	2-01257	DADO ES.N.A. M6	NORMAL AUTOLOCKING HEXAGON NUT M6
19	5-102062	CILINDRO PNEUMATICO D.60	CYLINDER D.60
20	4-122530	CARTER	COVER
21	2-00026	SEEGER D.14	SEEGER D.14
22	435005	RONDELLA D.15X21X1	WASHER D.15X21X1
23	4-103723	PERNO	PIN
24	4-106181	SUPPORTO DISCO	DISK SUPPORT
25	2-02096	VSTEI M12X20	CSK SCREW SOCKET M12X20
26	462117	RONDELLA D.12X24X0,5	WASHER D.12X24X0,5
27	421833	OR D.29,82X2,62	O-RING D.29,82X2,62
28	5-100688	RULLO	ROLLER
29	4-106180	PERNO ANTISVITAMENTO	PIN
30	2-71525	DADO ES.A. M10	AUTOLOCKING HEXAGON NUT M10
31	4-122499	UTENSILE	TOOL
32	4-107970	PROTEZIONE UTENSILE	INSERT
33	2-01224	VTCEI M10X45	HEAXGON SOCKET HEAD SCREW M10X45
34	2-02249	RONDELLA ELASTICA 13X24	ELASTIC WASHER 13X24

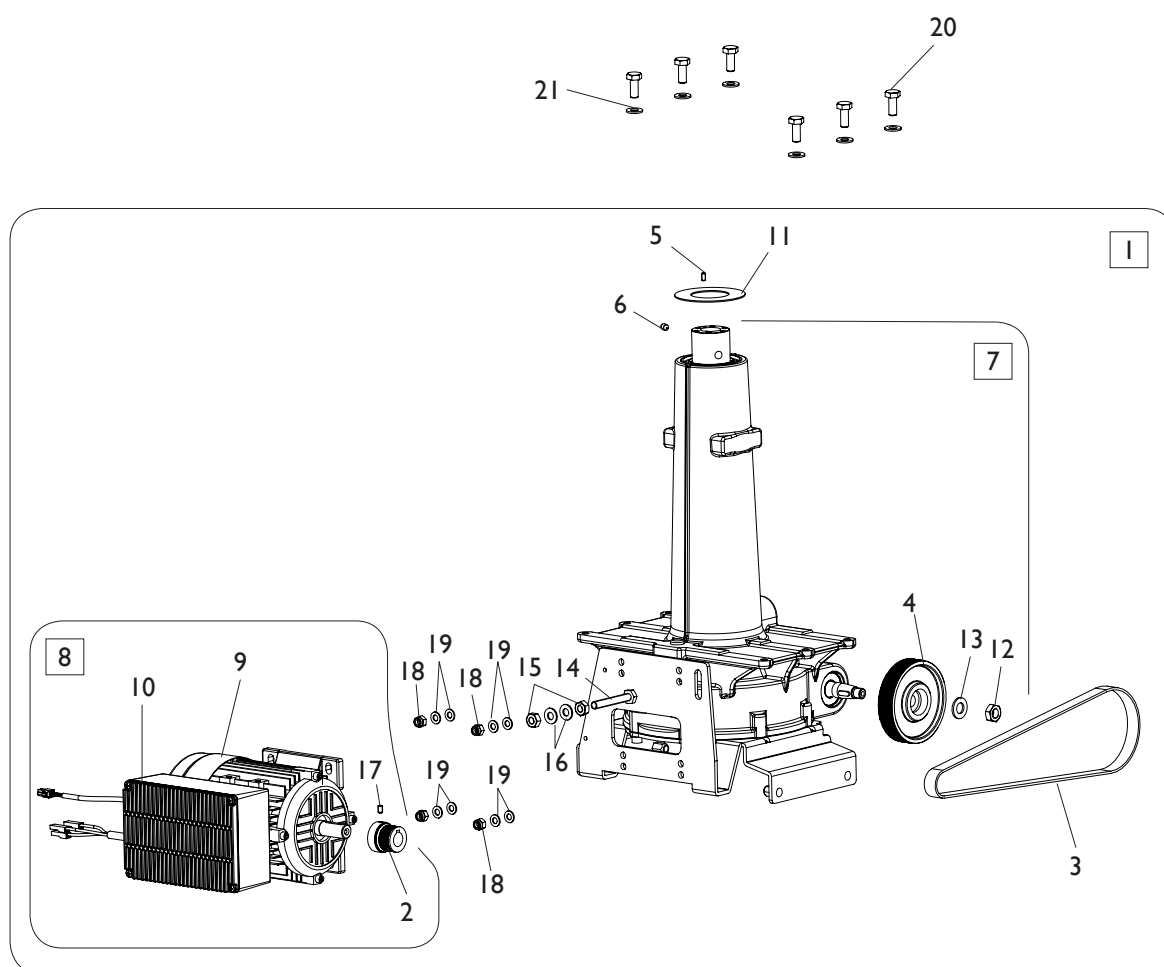
GRUPPO CONSOLLE COMANDI
COMMAND CONSOLLE GROUP



TORNA AL COMPLESSIVO
RETURNS TO OVERALL

Rif. Ref.	Codice Code	Descrizione	Description
1	4-122536	TUBO CONSOLLE	CONSOLLE PROTECTION
2	4-122537	ADESIVO CONSOLLE	CONSOLLE LABEL
3	5-102653	COMANDO STALLONATORE INFERIORE	COMMAND LOWER BEAD ASSEMBLY
4	5-102654	COMANDO STALLONATORE SUPERIORE	COMMAND UPPER BEAD ASSEMBLY
5	5-103033	COMANDO UNGHIA UTENSILE	COMMAND TOOL ASSEMBLY
6	5-103034	COMANDO TRASLAZIONE BRACCIO	COMMAND ARM ASSEMBLY
7	5-102655	VALVOLA COMANDO STALL. CPL.	BEAD COMMAND VALVE ASSEMBLY
8	3-00049	RACCPN-LO-G1/8G-T8	LO-FITTING-G1/8G-T8
9	3-00053	RACCPN-LO-G1/8-T6	LO-FITTING G1/8-T6
10	3-00181	SILENZIATORE IN ACCIAIO 1/8	SILENCER 1/8
11	3-01642	VALVOLA	VALVE
12	444227	VALVOLA	VALVE
13	261836	COMANDO RICERCA UTENSILE	TOOL COMMAND
14	433675	SILENZIATORE G1/8	SILENCER G1/8
15	5-103045	GRUPPO DISTRIBUZIONE	VALVE ASSEMBLY
16	3-00464	RACCPN-D-G1/8G-T8	D-FITTING-G1/8G-T8
17	3-00461	RACCPN-D-G1/8G-T6	D-FITTING-G1/8G-T6
18	3-03058	BLOCCETTO RIPARTITORE	BLOCK
19	437642	TAPPO G1/4	CAP G1/4
20	3-00459	RACCPN-D-G1/4G-T8	D-FITTING-G1/4G-T8
21	2-91668	VTCEI M4X30	HEXAGON SOCKET HEAD SCREW M4X30
22	3-01646	VALVOLA	VALVE
23	2-00209	RONDELLA D.4	WASHER D.4
24	2-01018	DADO ES.A. M4	AUTOLOCKING HEXAGON NUT M4
25	5-122223	CARTER CONSOLLE CON ADESIVO	CONSOLLE CARTER WITH LABEL
26	2-00320	VTCEI M8X20	HEXAGON SOCKET HEAD SCREW M8X20
27	2-02007	VTCEI M8X20	HEXAGON SOCKET HEAD SCREW M8X20
28	4-122549	COVER CONSOLLE	CONSOLLE COVER
29	3-00025	RACCPN-T-T8	T-FITTING-T8
30	3-00102	RACCPN-MANICOTTO-G1/8F	RACCPN-G1/8F
31	3-00290	RACCPN-TO-G1/8CG-T6	TO-FITTING-
32	3-02090	RACCPN-D-T6-4-T4	D-FITTING-T6-4-T4
33	3-01179	RACCPN-D-T6/C4	D-FITTING-T6/C4
34	3-01174	RACCPN-D-T4-T6	D-FITTING-T4-T6
35	3-02319	RACCPN-TAPPO-T4	FITTING-T4
36	2-02174	VTBEI M6X16	SCREW M6X16
37	2-03203	RONDELLA D.8,4X17X1,6	WASHER D.8,4X17X1,6
38	3-00048	RACCPN-Y-T8	Y-FITTING-T8
39	261835	COM. SMONTAGGIO/ARRETRAMENTO	DEMOUNTING COMMAND
40	461842	PULSANTE	BUTTON
41	461844	VALVOLA	VALVE
42	461843	CONTATTO	CONTACT
43	3-01647	VALVOLA	VALVE
44	4-100013	SELETTORE A LEVA	SWITCH
45	301289	RONDELLA D.17,25X24X0,3	WASHER D.17,25X24X0,3
46	3-10155	RACCPN-TL-T4 (DA 04-2018)	TL-FITTING-T4 (SINCE 04-2018)

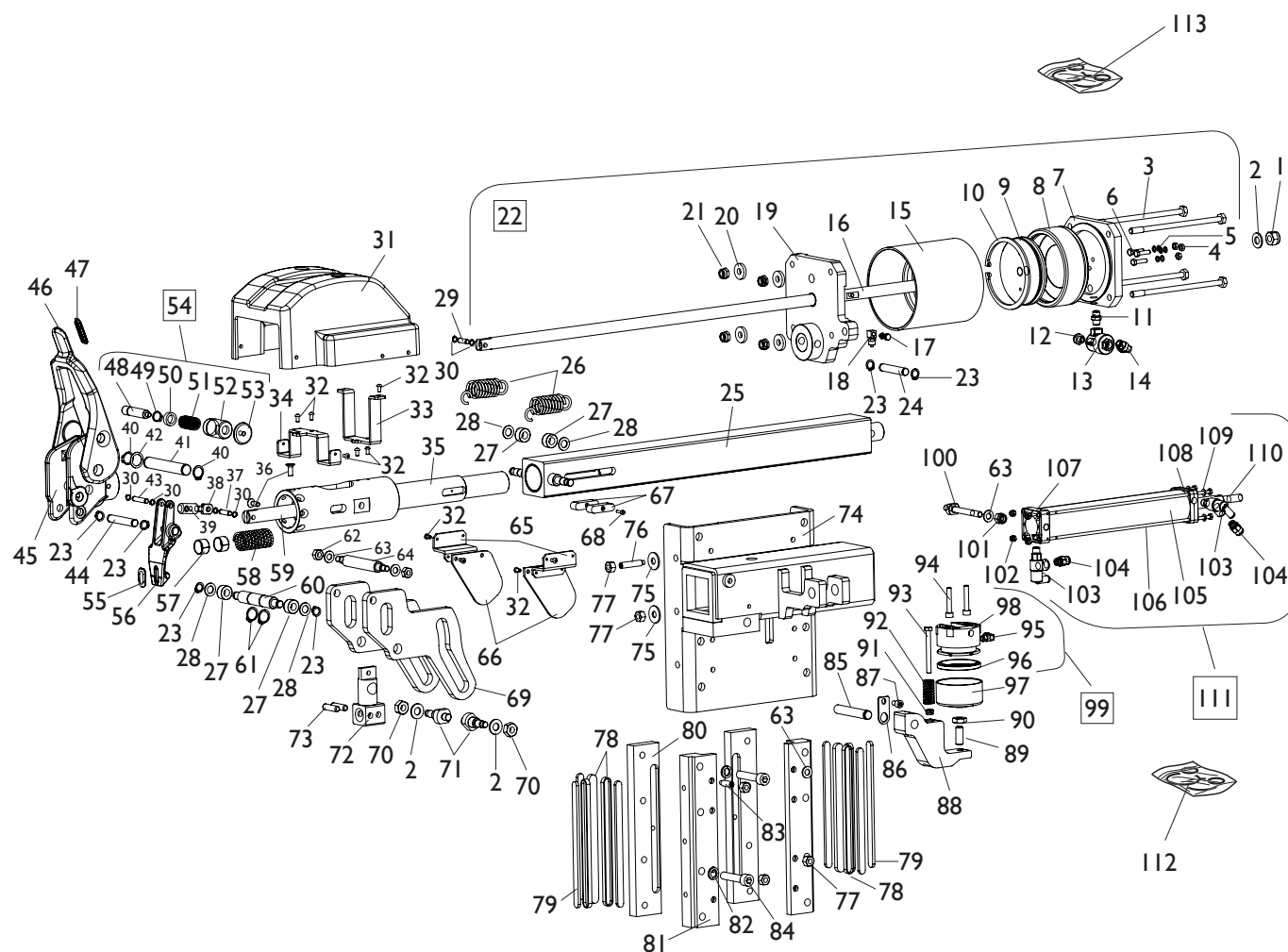
GRUPPO RIDUTTORE CON MOTORE GROUP GEARBOX WITH MOTOR



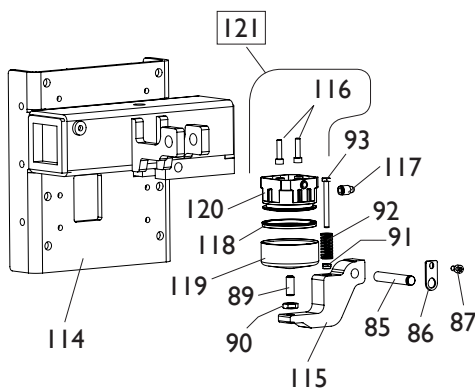
[TORNA AL COMPLESSIVO](#)
[RETURNS TO OVERALL](#)

Rif. Ref.	Codice Code	Descrizione	Description
1	5-104041	RIDUTTORE CON MOTORE 230V	GEARBOX WITH MOTOR 230V
1	5-104042	RIDUTTORE CON MOTORE 115V	GEARBOX WITH MOTOR 115V
2	4-104329	PULEGGIA MOTORE 50/60HZ	MOTOR PULLEY 50/60HZ
3	3-01649	CINGHIA 50/60HZ	BELT 50/60HZ
4	354082	PULEGGIA RIDUTTORE	GEARBOX PULLEY
5	2-00850	VSTEI M5X10	SCREW M5X10
6	2-71364	VSTEI M8X12	SCREW M8X12
7	5-105535	RIDUTTORE CPL. 115/230V (NO MOTORE)	GEARBOX ASSEMBLY 115/230V (NO MOTOR)
8	5-104966	MOTOINV. + CAVI 230V/1/50-60HZ	MOTOR WITH CABLE 230V/1/50-60HZ
8	5-103599	MOTOINV. + CAVI 115V/1/60HZ	MOTOR WITH CABLE 115V/1/60HZ
9	4-113412	MOTOINV. 115-230V (NO SCHEDA)	MOTOR 115-230V (NO P.C. BOARD)
10	4-115395	SCHEDA INVERTER+ FILTRO 230V 190HZ	INVERTER PC.BOARD + FILTER 230V 190HZ
10	4-111585	SCHEDA INVERTER 115V 190HZ	INVERTER PC.BOARD 115V 190HZ
11	4-100767	COPERTURA AUTOCENTRANTE	TURNTABLE COVER
12	2-00941	DADO ES. M14	HEXAGON NUT M14
13	2-00215	RONDELLA D.14	WASHER D.14
14	2-00384	VTE M10X70	HEXAGON HEAD SCREW M10X70
15	2-91726	DADO ES. M10	HEXAGON NUT M10
16	2-00213	RONDELLA D.10	WASHER D.10
17	2-00544	VSTEI M6X10	SCREW M6X10
18	2-01020	DADO ES.A. M8	AUTOLOCKING HEX. NUT M8
19	2-01299	RONDELLA D.9X24X2	WASHER D.9X24X2
20	2-00380	VTE M10X25	HEXAGON HEAD SCREW M10X25
21	2-02494	RONDELLA D.10	WASHER D.10

GRUPPO UTENSILE TOOL GROUP



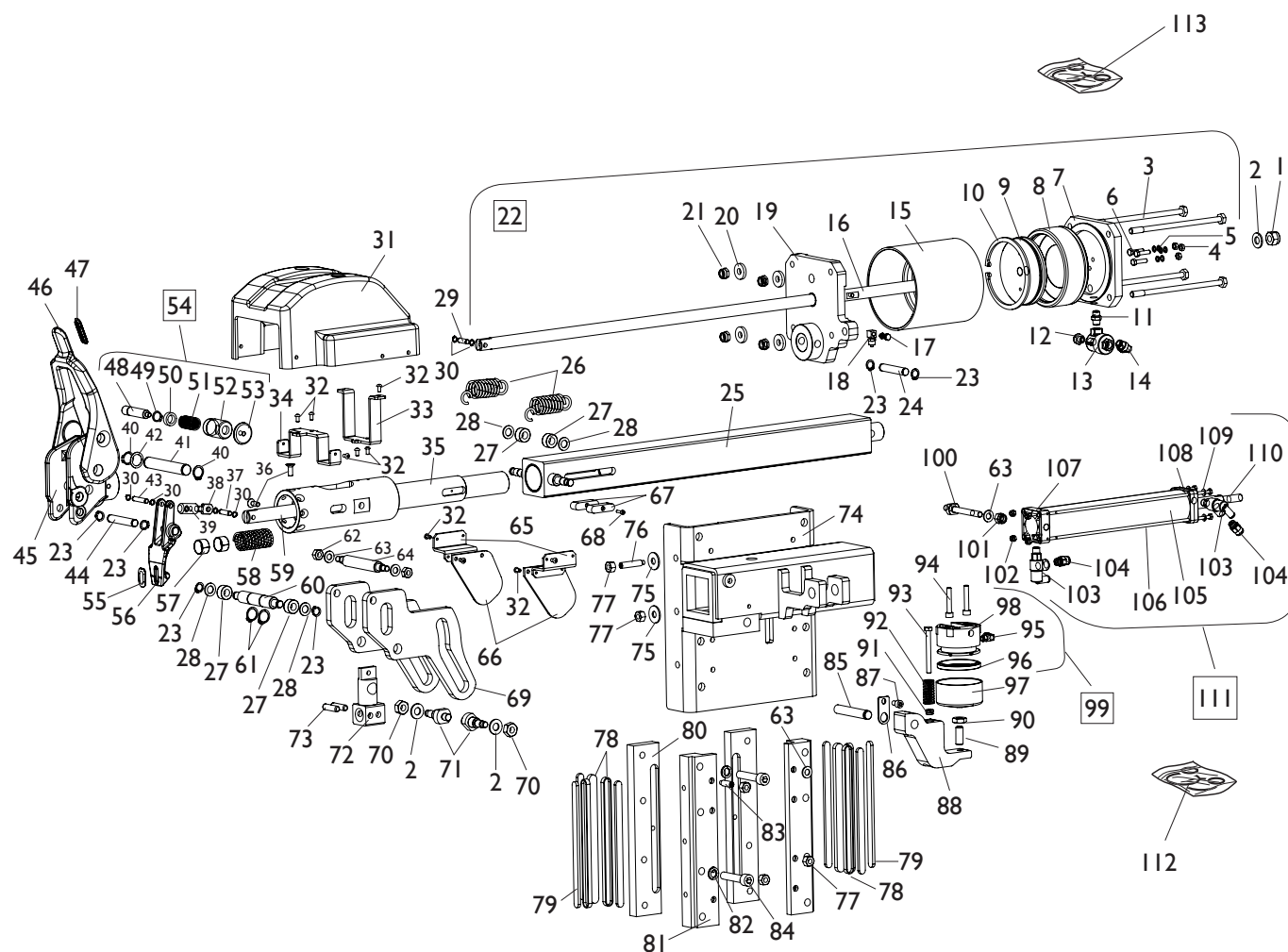
**IN PRODUZIONE DA 04-2018
PRODUCT SINCE 04-2018**



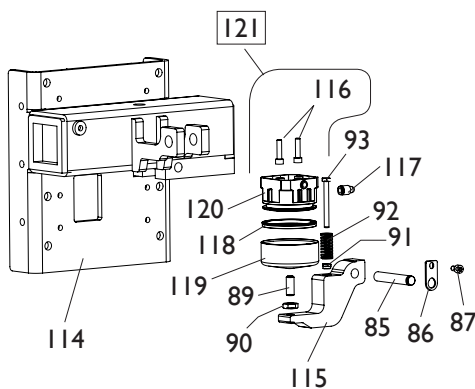
**[TORNA AL COMPLESSIVO](#)
[RETURNS TO OVERALL](#)**

Ref.	Code	Descrizione	Description
1	2-01019	DADO ES.A. M10	AUTOLOCKING HEXAGON NUT M10
2	2-00213	RONDELLA D.10	WASHER D.10
3	4-106257	TIRANTE M8X55	TIE-ROD M8X55
4	2-00144	DADO ES. M5	HEXAGON NUT M5
5	3-00452	RONDELLA IN NYLON D.5	NYLON WASHER D.5
6	2-00356	VTE M5X20	HEXAGON HEAD SCREW M5X20
7	361493	FLANGIA POSTERIORE D.110	REAR FLANGE D.110
8	361494	PISTONE FLOTTANTE D.110X38	PISTON D.110X38
9	361495	PISTONE D.95X12	PISTON D.95X12
10	2-03067	ANELLO ELASTICO D.95	ELASTIC WASHER D.95
11	3-00143	RACCPN-NIPPOLO-G1/8C	NIPPOLO-FITTING-G1/8C
12	3-00181	SILENZIATORE IN ACCIAIO 1/8	SILENCER 1/8
13	3-02403	VALVOLA DI SCARICO 1/8G	VALVE 1/8G
14	3-00053	RACCPN-LO-G1/8-T6	LO-FITTING-G1/8-T6
15	4-122473	CAMICIA D.110X115	LINER D.110X115
16	4-122472	STELO D.16X778,3	STEM D.16X778,3
17	3-00072	VITE FORATA M5	SCREW M5
18	3-00079	RACCPN-ANELLO-M5-T6/4	FITTING-M5-T6/4
19	5-122217	FLANGIA ATERIORE D.110	FRONT FLANGE D.110
20	339208	RONDELLA D.8,5X22X4	WASHER D.8,5X22X4
21	2-01137	DADO ES.A. M8	AUTOLOCKING HEXAGON NUT M8
22	5-107955	CILINDRO D.110 SCS-LIGHT	TOOL CYLINDER D.110
23	2-00023	SEEGER D.10	SEEGER D.10
24	4-122388	PERNO D.10 L.55mm	PIN D.10 L.55mm
25	5-122218	QUADRO 50X50	BAR 50X50
26	4-122382	MOLLA D.22X14X74	SPRING D.22X14X74
27	2-03061	ROTELLA RULLI	ROLLER
28	354588	RONDELLA D.10,5X18X1,5	WASHER D.10,5X18X1,5
29	361486	PERNO D.6X19,5	PIN D.6X19,5
30	2-00020	ANELLO D.6	SEEGER D.6
31	4-122375	PROTEZIONE	COVER
32	2-80009	VTBEI M4X8	SCREW M4X8
33	4-122419	PIASTRA SUPPORTO CENTRALE	PLATE
34	4-122418	PIASTRA SUPPORTO LATERALE	PLATE
35	4-122399	SUPPORTO TELESCOPICO	SUPPORT
36	2-00711	VTSP6I M6X16	SCREW M6X16
37	4-122416	PERNO BIELLA D.6X22	PIN D.6X22
38	361485	PERNO M8X37	PIN M8X37
39	361484	REGISTRO	PIN
40	2-01122	ANELLO ELASTICO D.15	ELASTIC WASHER D.15
41	4-122414	PERNO FULCRO D.15X90	FULCRUM PIN D.15X90
42	4-104696	RONDELLA D.16X22X0,2	WASHER D.16X22X0,2
43	361487	PERNO D.6X30	PIN D.6X30
44	4-122413	PERNO D.10X58	PIN D.10X58
45	4-122424	SUPPORTO UNGHIE	TOOLS SUPPORT
46	4-122422	UNGHIA DI MONTAGGIO	TOOL
47	4-107970	PROTEZIONE UTENSILE	INSERT
48	4-122434	PERNO D.12X63,5	PIN D.12X63,5
49	2-00025	ANELLO ELASTICO D.12	ELASTIC WASHER D.12
50	4-122435	RONDELLA SPECIALE D.12X18X6	SPECIAL WASHER D.12X18X6
51	4-122430	MOLLA D.15,5X1,5X32	SPRING D.15,5X1,5X32
52	4-122432	SUPPORTO CHIAVISTELLO	SUPPORT
53	4-109834	POMOLO	KNOB
54	5-122219	CHIAVISTELLO UTENSILE	PIN ASSEMBLY
55	461489	PROTEZIONE TESTINA	INSERT
56	361403	UTENSILE	TOOL
57	3-03048	BOCCOLA D.18X20X12	BUSH D.18X20X12
58	4-122427	MOLLA D.25,75X2,5X100	SPRING D.25,75X2,5X100
59	4-122409	PERNO D.18X165	PIN D.18X165
60	4-122405	PERNO D.16X104	PIN D.16X104
61	2-01130	ANELLO ELASTICO D.16	ELASTIC WASHER D.16

GRUPPO UTENSILE TOOL GROUP



**IN PRODUZIONE DA 04-2018
PRODUCT SINCE 04-2018**

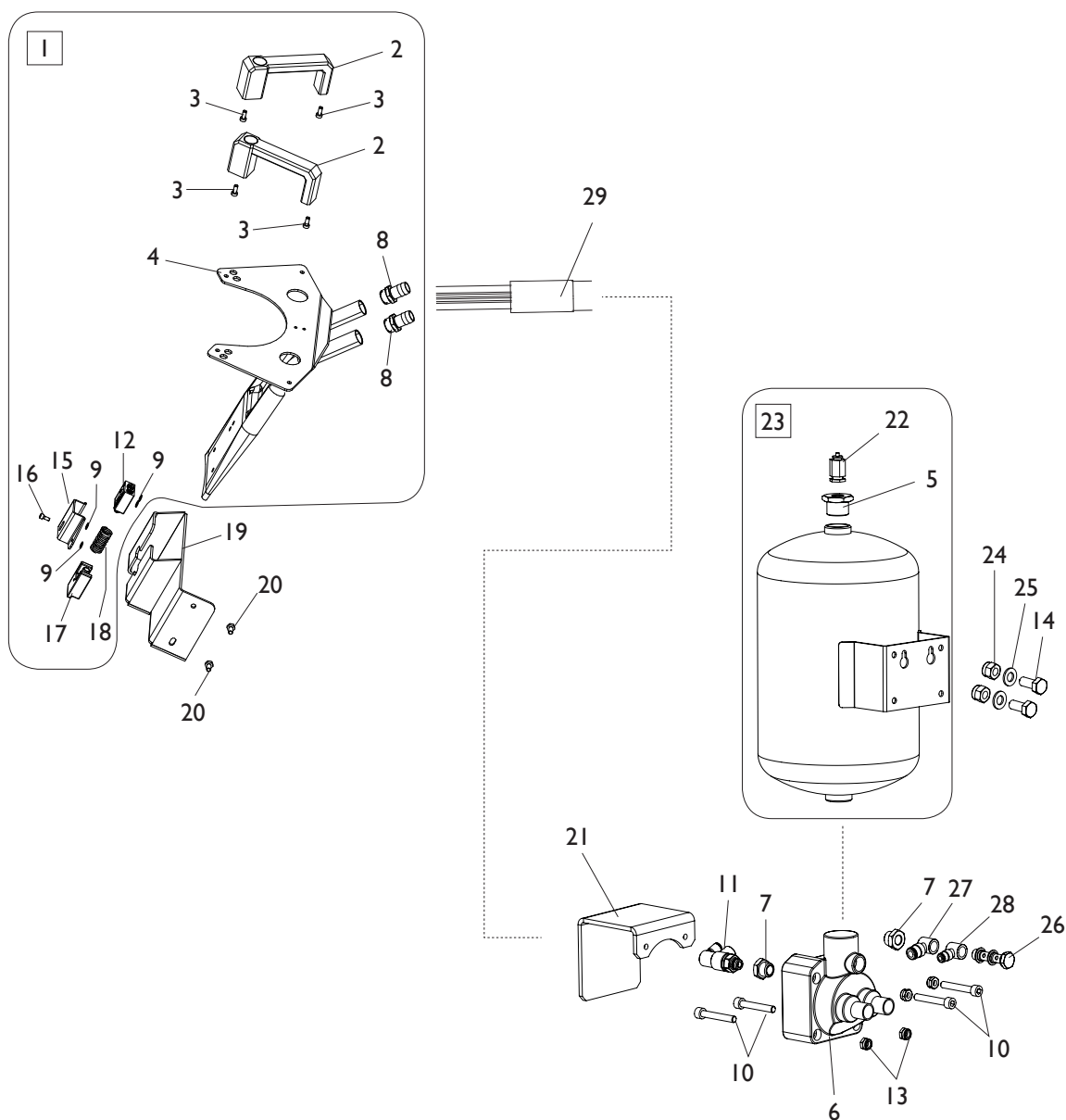


**[TORNA AL COMPLESSIVO](#)
[RETURNS TO OVERALL](#)**

Ref.	Code	Descrizione	Description
62	2-00151	DADO ES. M8	HEXAGON NUT M8
63	2-00212	RONDELLA D.8	WASHER D.8
64	4-122394	PERNO D.15X115	PIN D.15X115
65	4-122376	SUPPORTO LATERALE	SUPPORT
66	4-122377	PROTEZIONE IN GOMMA	RUBBER COVER
67	4-122389	LINGUETTA SPECIALE IN BRONZO 12X40	BRONZE PLUG 12X40
68	2-00922	VTCEI M3X12	HEXAGON SOCKET HEAD SCREW M3X12
69	4-122395	PIASTRA CAMMA ROTAZIONE	PLATE
70	2-01275	DADO ES. M10	HEXAGON NUT M10
71	4-122404	PERNO M10X50	PIN M10X50
72	4-122398	SCORREVOLE TRAINANTE	SLIDER
73	2-71580	SPINA D.8X30	PIN D.8X30
74	4-122365	CARRELLO	CARRIAGE
75	2-01299	RONDELLA D.9X24X2	WASHER D.9X24X2
76	2-01835	VSTCI M8X40	SCREW M8X40
77	2-00112	DADO ES. M8	HEXAGON NUT M8
78	4-105615	PATTINO	SLIDER
79	4-105614	LAMINA RIPRESA GIOCO	SHEET
80	4-122373	SUPPORTO PATTINO ESTERNO	SLIDER SUPPORT
81	4-122374	SUPPORTO PATTINO INTERNO	SLIDER SUPPORT
82	3-00699	RONDELLA NORD-LOCK D.10,7X16,6X2,5	NORD-LOCK WASHER D.10,7X16,6X2,5
83	2-01322	VSTCI M8X25	SCREW M8X25
84	2-00334	VTCEI M10X50	HEXAGON SOCKET HEAD SCREW M10X50
85	4-108173	PERNO L.75	PIN L.75
86	4-108665	PIASTRINO	PLATE
87	2-01989	VTCEI M6X10	HEXAGON SOCKET HEAD SCREW M6X10
88	4-108218	LEVA DI BLOCCAGGIO	LEVER
89	2-01291	VSTCI M10X25	SCREW M10X25
90	2-00157	DADO ES. M10	HEXAGON NUT M10
91	2-01979	DADO ES. A M6	AUTOLOCKING HEXAGON NUT M6
92	431257	MOLLA D.8X16X32	SPRING D.8X16X32
93	2-00369	VTE M6X60	HEXAGON HEAD SCREW M6X60
94	2-00909	VTCEI M6X35	HEXAGON SOCKET HEAD SCREW M6X35
95	3-00220	RACCPN-L-G1/8C-T4	L-FITTING-G1/8C-T4
96	443078	GUARNIZIONE D.60,33X47,63X6,35	SEAL D.60,33X47,63X6,35
97	326537	CILINDRO D.60	CYLINDER D.60
98	443077	PISTONE D.60X38	PISTON D.60X38
99	5-101581	PISTONE DI BLOCCAGGIO	PISTON ASSEMBLY
100	4-122369	PERNO M8X79,6	PIN M8X79,6
101	2-01020	DADO ES. A. M8	AUTOLOCKING HEXAGON NUT M8
102	2-01018	DADO ES. A. M4	AUTOLOCKING HEXAGON NUT M4
103	3-03006	VALVOLA 1/8	VALVE 1/8
104	3-00461	RACCPN-D-G1/8G-T6	D-FITTING-G1/8G-T6
105	4-122528	CAMICIA D.40X243	LINER D.40X243
106	4-122529	TIRANTE D.4X280	TIE-ROD D.4X280
107	4-108322	FLANGIA POSTERIORE D.40	REAR FLANGE D.40
108	4-108323	FLANGIA ANTERIORE D.40	FRONT FLANGE D.40
109	2-00209	RONDELLA D.4	WASHER D.4
110	4-122527	STELO D.15X300	STEM D.15X300
111	5-107981	CILINDRO TRASLAZIONE ORIZZ. D.40	CYLINDER ASSEMBLY D.40
112	5-103267	KIT GUARNIZIONI CILINDRO D.40	SEALS KIT FOR CYLINDER D.40
113	262525	KIT GUARNIZIONI CILINDRO D.110	SEALS KIT FOR CYLINDER D.110
114	4-135360	CARRELLO	CARRIAGE
115	4-135366	LEVA DI BLOCCAGGIO	LEVER
116	2-02808	VTCEI M6X25	HEXAGON SOCKET HEAD SCREW M6X25
117	3-00149	RACCPN-L-C6-T6	L-FITTING-C6-T6
118	3-02060	GUARNIZIONE D.70X60X5	SEAL D.70X60X5
119	4-404498	CILINDRO D.70X34	CYLINDER D.70X34
120	4-404781	PISTONE CON CARTUCCIA D.70X41	PISTON D.70X41
121	5-491113	CILINDRO D.70 CPL.	CYLINDER D.70 ASSEMBLY

GRUPPO T.I. SYSTEM

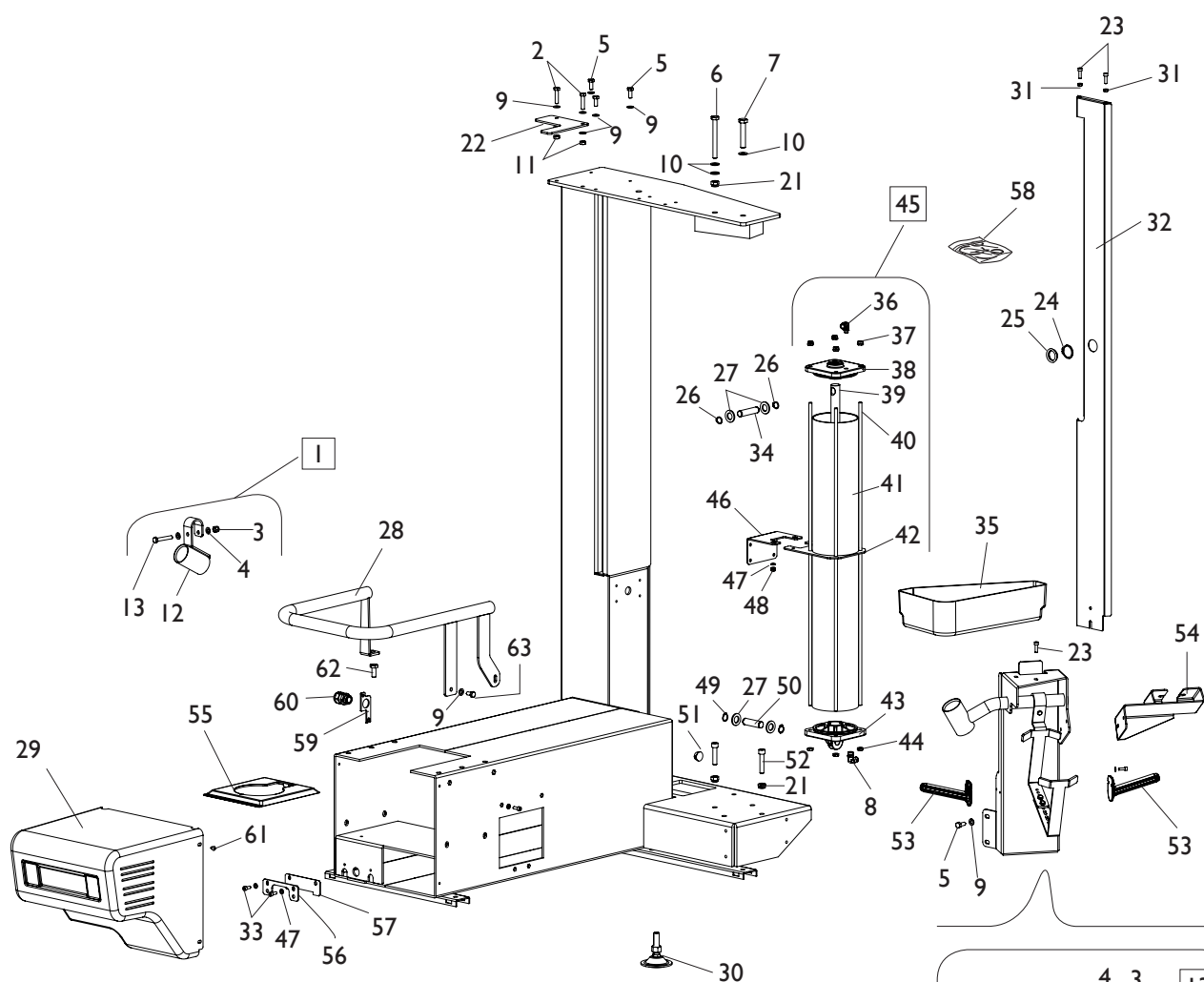
T.I. SYSTEM GROUP



[TORNA AL COMPLESSIVO](#)
[RETURNS TO OVERALL](#)

Rif. Ref.	Codice Code	Descrizione	Description
1	5-401574	UGELLO BLAST COMPLETO	NOZZLE ASSEMBLY
2	3-90014	MICROVALVOLA A MANIGLIA	HANDEL WITH VALVE
3	2-03106	VTCEI B. M5X12	LOW HEX. SOCKET HEAD SCREW M5X12
4	4-404655	UGELLO BLAST	NOZZLE
5	442239	RIDUZIONE M/F 3/8	FITTING M/F 3/8
6	243203	VALVOLA DI SPARO	VALVE FIRING
7	3-00269	RACCPN-RIDUZIONE-G1/4-1/8F	FITTING-G1/4-1/8F
8	3-00008	RACCPN-RESCA-G1/2-T17	RESCA-FITTING-G1/2-T17
9	2-00209	RONDELLA D.4	WASHER D.4
10	2-94006	VTCEI 1/2 M6X40	CIRCULAR SOCKET HEAD SCREW M6X40
11	3-01175	VALVOLA	VALVE
12	3-90108	VALVOLA	VALVE
13	2-01979	DADO ES.A. M6	AUTOLOCKING HEX. NUT M6
14	2-02047	VTE M8X20	HEXAGON SOCKET HEAD SCREW M8X20
15	4-405537	ASTUCCIO	COVER
16	2-02080	VTCEI M4X10	HEXAGON SOCKET HEAD SCREW M4X10
17	4-405538	CURSORE	GUIDE
18	3015546	MOLLA D.17X2X36	SPRING D.17X2X36
19	4-405585	SUPPORTO BLAST	SUPPORT
20	2-91767	VTE M6X12	HEXAGON HEAD SCREW M6X12
21	3020962	STAFFA PROTEZIONE VALVOLA	VALVE BRACKET
22	3-00356	VALVOLA CE	VALVE CE
23	262215	SERBATOIO CE	TANK CE
24	2-01020	DADO ES.N.A. M8	NORMAL AUTOLOCKING HEXAGON NUT M8
25	2-00212	RONDELLA D.8	WASHER D.8
26	3-00075	VITE FORATA DOPPIA G1/8	SCREW TWO HOLES G1/8
27	3-00515	RACCPN-ANELLO-G1/8-T6	FITTING-G1/8-T6
28	3-00514	RACCPN-ANELLO-G1/8-T4	FITTING-G1/8-T4
29	5-491045	TUBO GONFIAGGIO COMPLETO	INFLATION HOSE ASSEMBLY

GRUPPO COVER COVER GROUP



**TORNA AL COMPLESSIVO
RETURNS TO OVERALL**

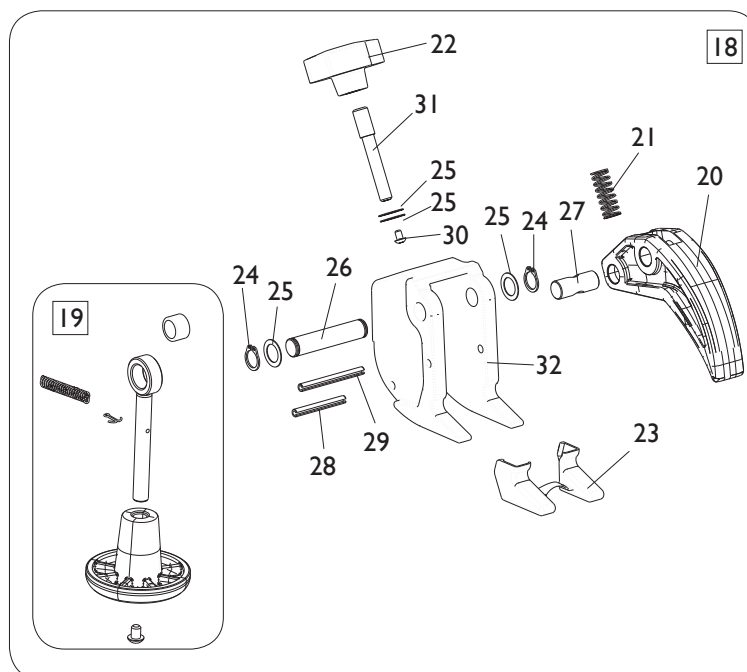
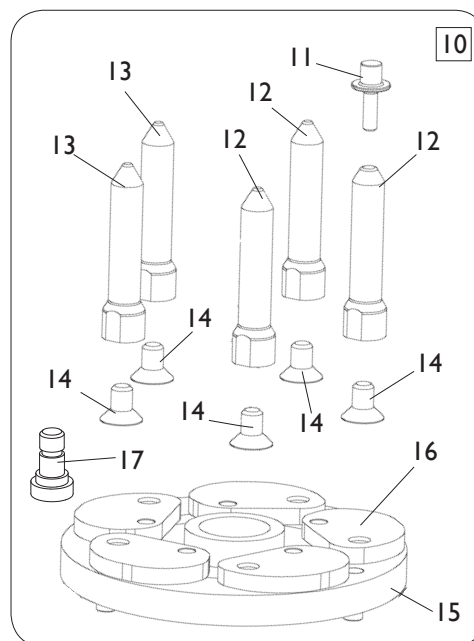
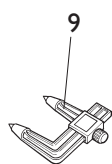
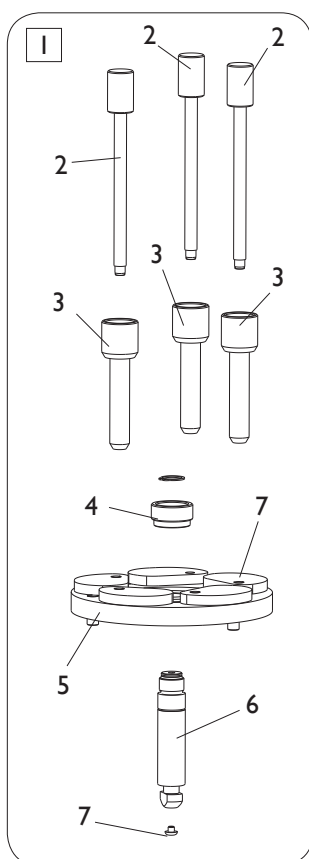
Ref.	Code	Descrizione	Description
1	5-101965	ATTACCO MANIGLIA	HANDLE SUPPORT
2	2-00795	VTE M8X35	HEXAGON HEAD SCREW M8X35
3	2-01020	DADO ES.A. M8	AUTOLOCKING HEXAGON NUT M8
4	2-00212	RONDELLA D.8,4X16X1,6	WASHER D.8,4X16X1,6
5	2-00373	VTE M8X20	HEXAGON HEAD SCREW M8X20
6	2-71400	VTE 1/2F M10X100	HEXAGON HEAD SCREW 1/2F M10X100
7	2-02596	VTE 1/2F M12X65	HEXAGON HEAD SCREW 1/2F M12X65
8	3-00055	RACCPN-LO-G 1/4-M/T-T8	LO-FITTING-G 1/4-M/T-T8
9	2-00212	RONDELLA D.8	WASHER D.8
10	2-02494	RONDELLA D.10	WASHER D.10
11	2-00151	DADO ES. M8	HEXAGON NUT M8
12	4-105803	STAFFA ATTACCO MANIGLIA	HANDLE SUPPORT

Ref.	Code	Descrizione	Description
13	5-101236	PORTAGRASSO UNIVERSALE	GREASER SUPPORT
14	2-02802	VTE 1/2F M8X50	HEXAGON HEAD SCREW M8X50
15	2-02339	VTE M6X20	HEXAGON HEAD SCREW M6X20
16	2-00211	RONDELLA D.6	WASHER D.6
17	4-103832	LAMIERA FERMO	BRACKET
18	4-103831	GANCIO FISS. CONTENITORE GRASSO	GREASER HOLDER
19	2-01257	DADO ES.A. M6	AUTOLOCKING HEAXAGON NUT M6
20	4-102642	ADATTATORE PORTAGRASSO	GREASER SUPPORT ADAPTOR
21	2-01019	DADO ES.A. M10	AUTOLOCKING HEXAGON NUT M10
22	4-122532	STAFFA FERMO PREMITALLONE	BEAD PRESSER BRACKET
23	2-00310	VTCEI M6X20	HEXAGON SOCKET HEAD SCREW M6X20
24	2-00034	SEEGER D.30	SEEGER D.30
25	4-108996	BOCCOLA D.25X35X8	BUSH D.25X35X8
26	2-01122	SEEGER D.15	SEEGER D.15
27	2-01045	RONDELLA D.16	WASHER D.16
28	4-105965	TUBO MULTIFUNZIONE	PROTECTION
29	5-122215	PROTEZIONE FRONTALE CON ADESIVI	FRONT COVER WITH LABELS
30	215022	PIEDE	FOOT
31	2-00150	DADO ES. M6	HEXAGON NUT M6
32	5-122224	PROTEZIONE VERTICALE	COVER
33	2-00309	VTCEI M6X16	HEXAGON SOCKET HEAD SCREW M6X16
34	4-122507	PERNO D.15 L.64mm	PIN D.15 L.64mm
35	4-108333	VASCHETTA PORTA OGGETTI	CASING
36	3-00059	RACCPN-LO-GI/8C-T8	LO-FITTING-GI/8C-T8
37	2-01137	DADO ES.A. M8	AUTOLOCKING HEXAGON NUT M8
38	5-107559	FLANGIA ANTERIORE D.110	FRONT FLANGE D.110
39	4-122545	STELO D.22X798	STEM D.22X798
40	4-122546	TIRANTE D.8X778	TIE-ROD D.8X778
41	4-122544	CAMICIA D.110X741	LINER D.110X741
42	4-122547	STAFFA ATTACCO CILINDRO	BRACKET
43	4-130671	FLANGIA POSTERIORE D.110	REAR FLANGE D.110
44	2-00156	DADO ES. M8	HEXAGON NUT M8
45	5-107990	CILINDRO D.110 CPL.	CYLINDER ASSEMBLY D.110
46	4-122509	PIASTRA ATTACCO CILINDRO	BRACKET
47	2-00211	RONDELLA D.6	WASHER D.6
48	2-01257	DADO ES.A. M6	AUTOLOCKING HEXAGON NUT M6
49	2-01130	SEEGER D.16	SEEGER D.16
50	4-122508	PERNO D.16 L.57mm	PIN D.16 L.57mm
51	430555	TAPPO D.19X8,7	CAP D.19X8,7
52	2-00334	VTCEI M10X50	HEXAGON SOCKET HEAD SCREW M10X50
53	460087	SUPPORTO CONI	SUPPORT
54	4-405585	SUPPORTO BLAST	SUPPORT
55	4-104230	COPERTURA RIDUTTORE	GEARBOX COVER
56	4-122503	PIASTRA ATTACCO PEDALE	PLATE
57	4-122584	PIASTRA CHIUSURA	PLATE
58	245067	KIT GUARNIZIONI CILINDRO D.110	SEALS KIT FOR CYLINDER D.110
59	4-104104	STAFFA	BRACKET
60	426542	PRESSACAVO	PG16
61	2-02151	VTBEI M6X8	SCREW M6X8
62	2-00380	VTE M10X25	HEXAGON HEAD SCREW M10X25
63	2-00372	VTE M8X16	HEXAGON HEAD SCREW M8X16

38

Rif. Ref.	Codice Code	Descrizione	Description
1	5-104966	MOTOINV. + CAVI 230V/1/50-60HZ	MOTOR WITH CABLE 230V/1/50-60HZ
1	5-103599	MOTOINV. + CAVI 115V/1/60HZ	MOTOR WITH CABLE 115V/1/60HZ
2	4-113412	MOTOINV. 115-230V (NO SCHEDA)	MOTOR 115-230V (NO P.C. BOARD)
3	4-115395	SCHEDA INVERTER+ FILTRO 230V 190HZ	INVERTER PC.BOARD + FILTER 230V 190HZ
3	4-111585	SCHEDA INVERTER 115V 190HZ	INVERTER PC.BOARD 115V 190HZ
4	4-109895	CAVO 4X0,5mm L. 400mm 115-230V	CABLE 4X0,5mm L. 400mm 115-230V
5	4-111587	CAVO ALIMENT. L. 600mm 115-230V	SUPPLY CABLE L. 600mm 115-230V
6	4-104526	CAVO 3X2,5mm L. 3700mm 115-230V	CABLE 3X2,5mm L. 3700mm 115-230V
7	5-100723	CAVO PEDALIERA 4X0,5mm L.900mm	PEDAL CABLE 4X0,5mm L.900mm

ACCESSORI ACCESORIES

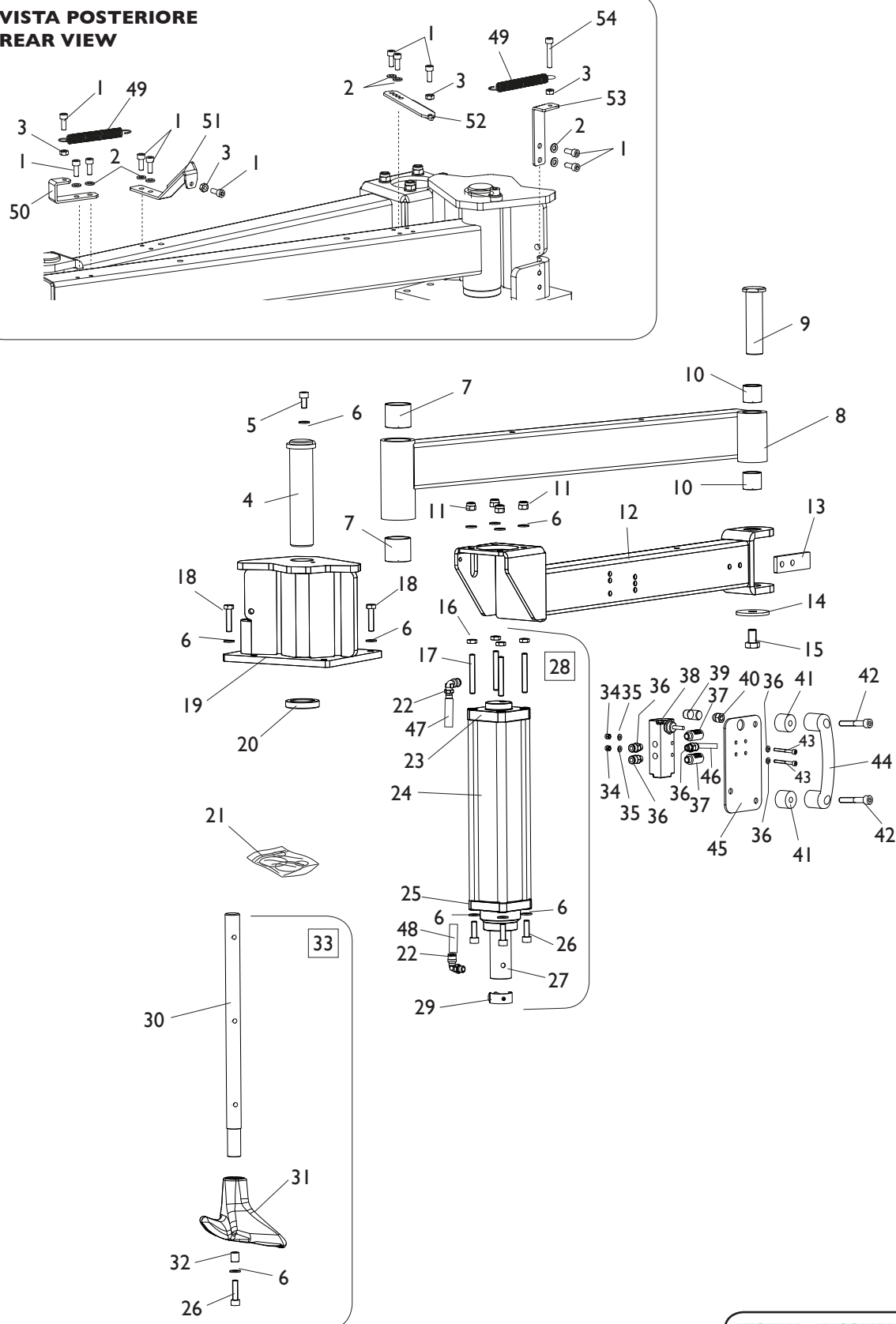


[TORNA AL COMPLESSIVO](#)
[RETURNS TO OVERALL](#)

Rif. Ref.	Codice Code	Descrizione	Description
1	8-11100087	KIT RUOTE CIECHE	WHEEL KIT BLIND
2	361647	VITE FISSAGGIO CERCHI CIECHI	FIXING BOLT RIMS BLIND
3	361648	GHIERA FISSAGGIO CERCHI CIECHI	FITTING NUT RIMS BLIND
4	4-103766	GHIERA SERRAGGIO FLANGIA	FITTING NUT
5	5-102422	FLANGIA UNIVERSALE 6 PETALI	UNIVERSAL FLANGE 6 PETALS
6	4-103765	BARRA BLOCCAGGIO FLANGE	BAR
7	461560	PROTEZIONE	PROTECTION
8	4-107023	BIELLA	PETAL
9	2008157	RILEVATORE FORI	DETECTOR HOLES
10	8-11100039	KIT RUOTE ROVESCE	REVERSE RIMS KIT
11	4-102377	GHIERA DI SERRAGGIO	FITTING NUT
12	5-102721	COLONNETTA CON SERRAGGIO	COLUMN WITH LOCKING
13	5-102720	COLONNETTA	COLUMN
14	2-71769	VTSPEI M12X20	CSK SCREW FLAT SOCKET M12X20
15	5-102421	FLANGIA CERCHI ROVESC	FLANGE REVERSE RIMS
16	4-107024	BIELLA	PETAL
17	4-101250	VITE FISSAGGIO BIELLA	SPECIAL SCREW
18	8-11100120	MORSETTO BASCULANTE	TILTING CLAMP
19	5-101642	DISCO DI SPINTA	DISK
20	4-104051	DITO	TOOL
21	3-01760	MOLLA D.11,5X30X1,5	SPRING D.11,5X30X1,5
22	3-01715	VOLANTINO	HANDLE
23	8-11100126	KIT 6 PROTEZIONI	6 PROTECTION KIT
24	2-00025	ANELLO D.12	SEEGER D.12
25	315274	RONDELLA D.12X18X0,5	WASHER D.12X18X0,5
26	4-104271	PERNO	PIN
27	4-104258	PERNO FORATO PICCOLO	SMALL PIN HOLES
28	2-71566	SPINA D.5X40	PLUG D.5X40
29	2-02219	SPINA D.5X50	PLUG D.5X50
30	2-03039	VTBEI M4X6	ROUNDED HEAD SCREW SOCKET M4X6
31	4-104259	PERNO DUE FILETTI	PIN TWO THREADS
32	4-104235	CORPO MORSETTO	BODY

GRUPPO PREMITALLONE BEAD DEPRESSOR GROUP

**VISTA POSTERIORE
REAR VIEW**



[TORNA AL COMPLESSIVO](#)
[RETURNS TO OVERALL](#)

Ref.	Code	Descrizione	Description
1	2-00309	VTCEI M6X16	HEXAGON SOCKET HEAD SCREW M6X16
2	2-00211	RONDELLA D.6	WASHER D.6
3	2-00150	DADO ES. M6	HEXAGON NUT M6
4	4-107888	PERNO FULCRO BRACCIO	PIVOT ARM
5	2-00319	VTCEI M8X16	CIRC. SOCKET HEAD SCREW M8X16
6	2-00212	RONDELLA D.8	WASHER D.8
7	3-80114	BOCCOLA D.35X35	BUSHING D.35X35
8	5-108000	BRACCIO CON BOCCOLE	ARM WITH BUSHING
9	4-106799	PERNO SNODO	PIN
10	3-80106	BOCCOLA D.25X25	BUSHING D.25X25
11	2-01020	DADO ES.N.A. M8	AUTOLOCKING HEX. NUT M8
12	4-122578	BRACCIO ROTANTE	ROTATION ARM
13	4-101897	LAMIERA ANTIROTAZIONE	ANTI-ROTATION PLATE
14	318216	RONDELLA D.12,5X50X4	WASHER D.12,5X50X4
15	2-00386	VTE M12X20	HEX. SOCKET HEAD SCREW M12X20
16	2-91680	DADO ES.B. M8	LOW HEXAGON NUT M8
17	2-02683	VSTEI M8X60	CSK SCREW FLAT SOCKET M8X60
18	2-02024	VTE M8X25	HEX. SOCKET HEAD SCREW M8X25
19	4-107868	PIASTRA ATTACCO PREMITALLONE	COUPLING PLATE MOUNTING TOOL
20	4-107890	ANELLO DISTANZIALE	SPACER
21	5-102410	KIT GUARNIZIONI CILINDRO D.63	CYLINDER SEALS KIT
22	3-00053	RACCPN-LO-G1/8G-T6	FITTING 1/8
23	4-106788	FLANGIA INFERIORE D.63	REAR FLANGE D.63
24	4-106790	CAMICIA D.63X277,5	LINER D.63X277,5
25	5-104568	FLANGIA SUPERIORE D.63	FRONT FLANGE D.63
26	2-02006	VTCEI M8X25	CIRC. SOCKET HEAD SCREW M8X25
27	5-104569	STELO CON BOCCOLE	ROD WITH BUSHING
28	5-102369	CILINDRO PREMITALLONE D.63	CYLINDER ASSEMBLY
29	5-103287	PERNO DI FERMO CON CLIP	STOP PIN
30	4-106794	STELO INTERNO REGOLABILE	INTERNAL ROD ADJUSTABLE
31	4-106888	PREMITALLONE SAGOMATO	BEAD DEPRESSOR
32	4-103846	DISTANZIALE PREMITALLONE	SPACER
33	5-102363	PREMITALLONE COMPLETO	BEAD DEPRESSOR ASSEMBLY
34	2-01018	DADO ES.N.A. M4	AUTOLOCKING HEX. NUT M4
35	2-00209	RONDELLA M4	WASHER M4
36	3-00461	RACCPN-D-G1/8G-T6	FITTING 1/8
37	3-00183	SILENZIATORE 1/8	SILENCER 1/8
38	3-01230	VALVOLA	VALVE
39	440585	IMPUGNATURA	HANDLE
40	2-00105	DADO ES.CIECO M8	NUT M8
41	461626	DISTANZIALE MANIGLIA	SPACER
42	2-80015	VTCEI M8X50	CIRC. SOCKET HEAD SCREW M8X50
43	2-02022	VTCEI M4X35	CIRC. SOCKET HEAD SCREW M4X35
44	458702	MANIGLIA APONTE D.8	HANDLE D.8
45	363396	PIATTO FISSAGGIO	PLATE
46	329874	TUBO D.6 L.3600MM	HOSE D.6 L.3600MM
47	315268	TUBO D.6 L.260MM	HOSE D.6 L.260MM
48	331060	TUBO D.6 L.500MM	HOSE D.6 L.500MM
49	4-122581	MOLLA D.12,5X1,3X63	SPRING D.12,5X1,3X63
50	4-122580	STAFFA AGGANCIO MOLLA ANT.	BRACKET
51	4-122572	STAFFA BIELLA	BRACKET
52	4-122579	STAFFA AGGANCIO MOLLA POST.	BRACKET
53	4-122576	STAFFA GANCIO MOLLA POST.	BRACKET
54	2-02218	VTCEI M6X35	HEXAGON SOCKET HEAD SCREW M6X35

Code 4-I22511

Production date : 01 / 2018

Il disegno è realizzato con tutti i particolari ma solo quelli codificati sono forniti come ricambi. L'Azienda si riserva la facoltà di apportare modifiche senza preavviso.

The drawing shows all parts but only the coded parts are supplied as spares. The Company reserves the right to make modifications without prior notice.