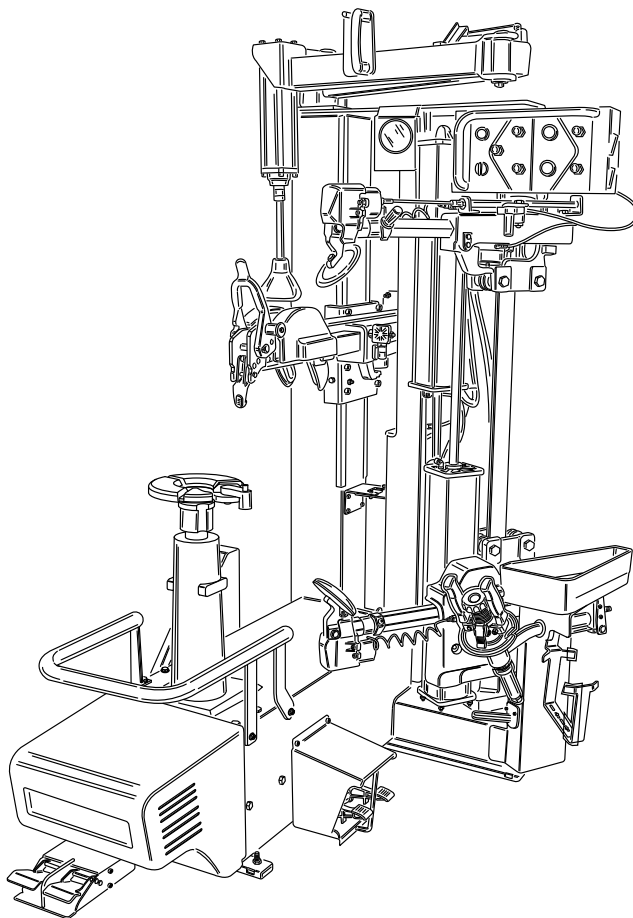


ARTIGLIO 5000

Pezzi di ricambio / Spare parts list



Code: 4-122511

Production date: 02 / 2020



www.corghi.com - info@corghi.com

I

Sul presente documento sono stati evidenziati con colore grigio i ricambi consigliati e indicati in grassetto i codici che sono variati rispetto a quelli riportati nella precedente versione del 01/18

EN

In this document, the recommended spare parts have been highlighted in gray, while in bold you find those codes which are different if compared with the previous version dated 01/18

DE

Im vorliegenden Dokument wurden die empfohlenen Ersatzteile in grauer Farbe hervorgehoben; die Teilenummern in Fettdruck haben sich beziehend auf die vorherige Version vom 01/18 geändert.

FR

Dans ce document, les pièces de rechange préconisées sont soulignées en gris, tandis que les références différentes par rapport à la version précédente du 01/18 sont en gras

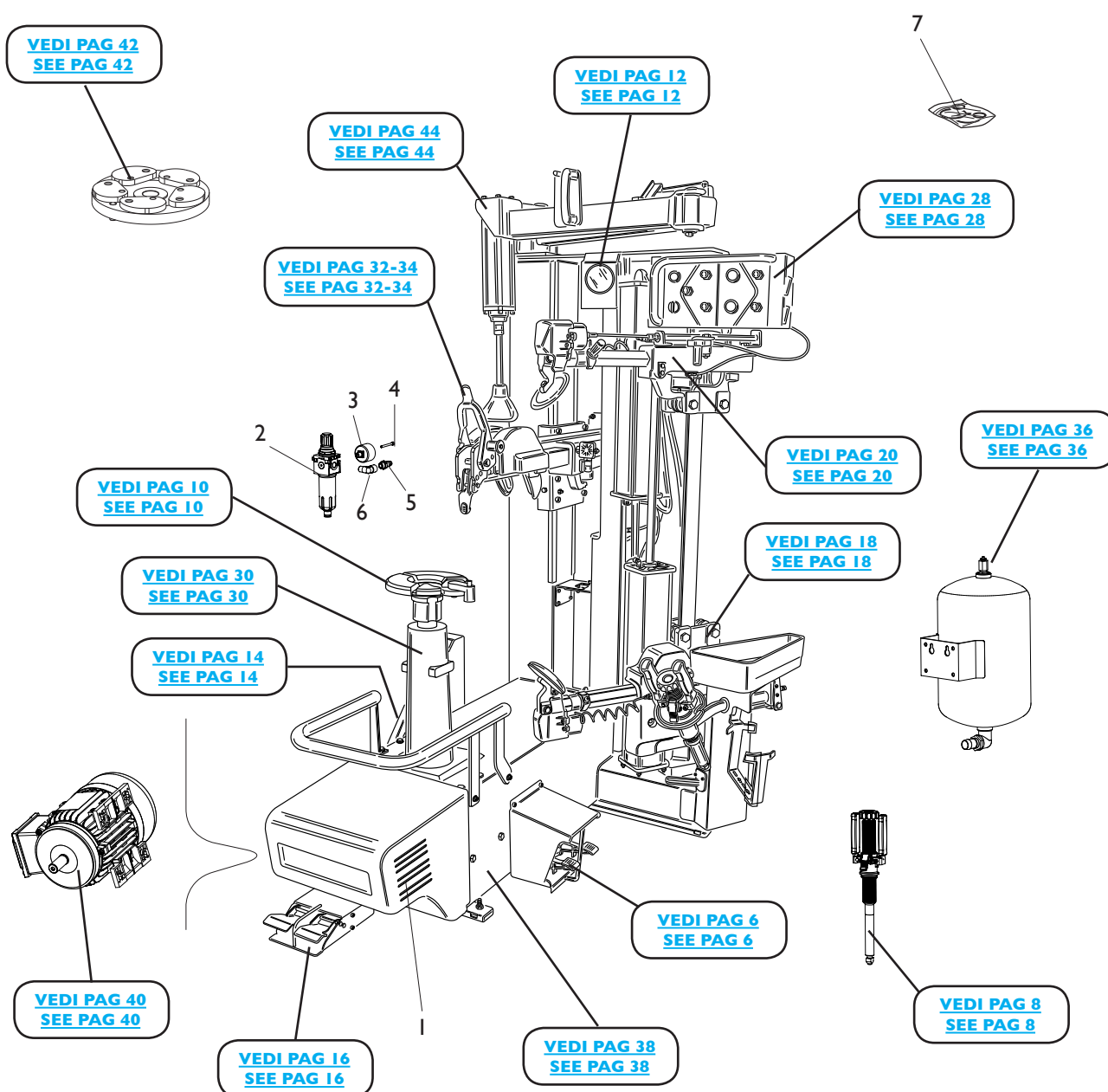
SOMMARIO

CONTENTS

| | |
|-------------------------------------|----|
| COMPLESSIVO ARTIGLIO 5000 | |
| ARTIGLIO 5000 OVERALL | 4 |
| GRUPPO PEDALIERA | |
| PEDAL GROUP | 6 |
| MANIGLIA BLOCCAGGIO RUOTA | |
| HANDLE LOCKING WHEEL | 8 |
| GRUPPO AUTOCENTRANTE | |
| TURNTABLE GROUP | 10 |
| GRUPPO MANOMETRO | |
| GAUGE GROUP | 12 |
| GRUPPO SOLLEVATORE | |
| LIFTER GROUP | 14 |
| GRUPPO PEDALIERA SOLLEVATORE | |
| PEDAL LIFTER GROUP..... | 16 |
| GRUPPO CARRELLI STALLONATORE | |
| BEAD BREAKER CARRIAGES GROUP..... | 18 |
| GRUPPO BRACCI STALLONATORI | |
| BEAD ARMS GROUP | 20 |
| DISCO STALLONATORE SUPERIORE | |
| UPPER BEAD BREAKER DISC | 22 |
| DISCO STALLONATORE INFERIORE (OLD) | |
| LOWER BEAD BREAKER DISC (OLD)..... | 24 |
| DISCO STALLONATORE INFERIORE (NEW) | |
| LOWER BEAD BREAKER DISC (NEW) | 26 |
| GRUPPO CONSOLLE COMANDI | |
| COMMAND CONSOLLE GROUP | 28 |
| GRUPPO RIDUTTORE CON MOTORE | |
| GROUP GEARBOX WITH MOTOR..... | 30 |
| GRUPPO UTENSILE | |
| TOOL GROUP | 32 |
| GRUPPO UTENSILE | |
| TOOL GROUP | 34 |
| GRUPPO T.I. SYSTEM | |
| T.I. SYSTEM GROUP..... | 36 |
| GRUPPO COVER | |
| COVER GROUP..... | 38 |
| IMPIANTO ELETTRICO | |
| ELECTRICAL SYSTEM..... | 40 |
| ACCESSORI | |
| ACCESORIES | 42 |
| GRUPPO PREMITALLONE | |
| BEAD DEPRESSOR GROUP..... | 44 |

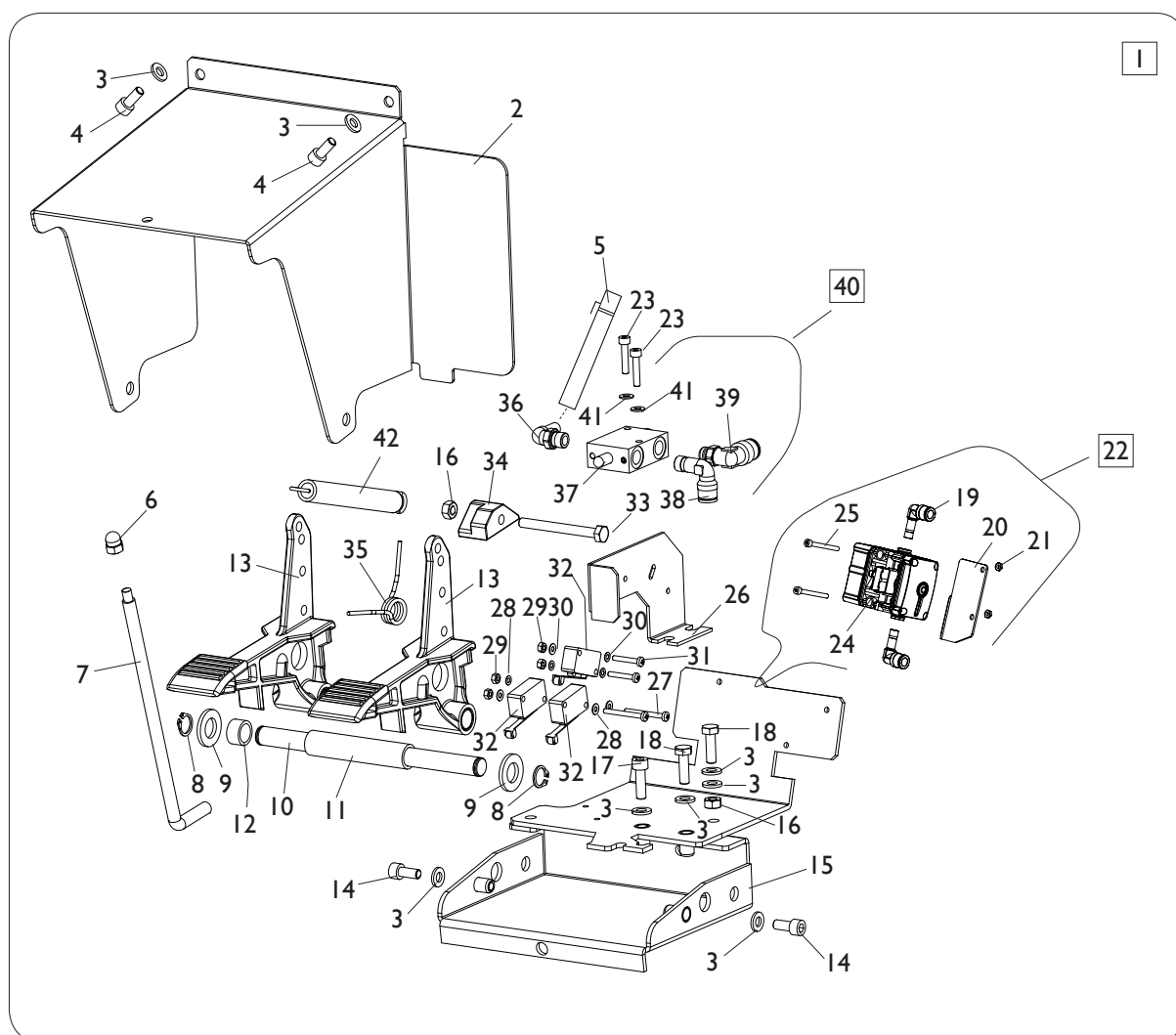
COMPLESSIVO ARTIGLIO 5000

ARTIGLIO 5000 OVERALL



| Rif. Ref. | Codice Code | Descrizione | Description |
|--------------|----------------|-----------------------------------|------------------------------------|
| 1 | 5-122215 | CARTER MOTORE | MOTOR COVER |
| 2 | 3-00346 | FILTRO COMPLETO | FILTER ASSEMBLY |
| 3 | 3-00488 | MANOMETRO D.40 BAR/PSI | PRESSURE GAUGE D.40 BAR/PSI |
| 3 | 3-00494 | MANIMETRO KPA | PRESSURE GAUGE D.40 KPA |
| 4 | 2-02286 | VTCEI M4X45 | HEXAGON SOCKET HEAD SCREW M4X45 |
| 5 | 3-00086 | RACCPN-D-G1/4-GR7 | D-FITTING-G1/4-GR7 |
| 6 | 3-00136 | RACCPN-GIUNZIONE-L-G1/4C-G1/4 M/F | L-FITTING-G1/4C-G1/4 M/F |
| 7 | 5-122216 | KIT ADESIVI ARTIGLIO 5000 | ARTIGLIO 5000 LABELS KIT |

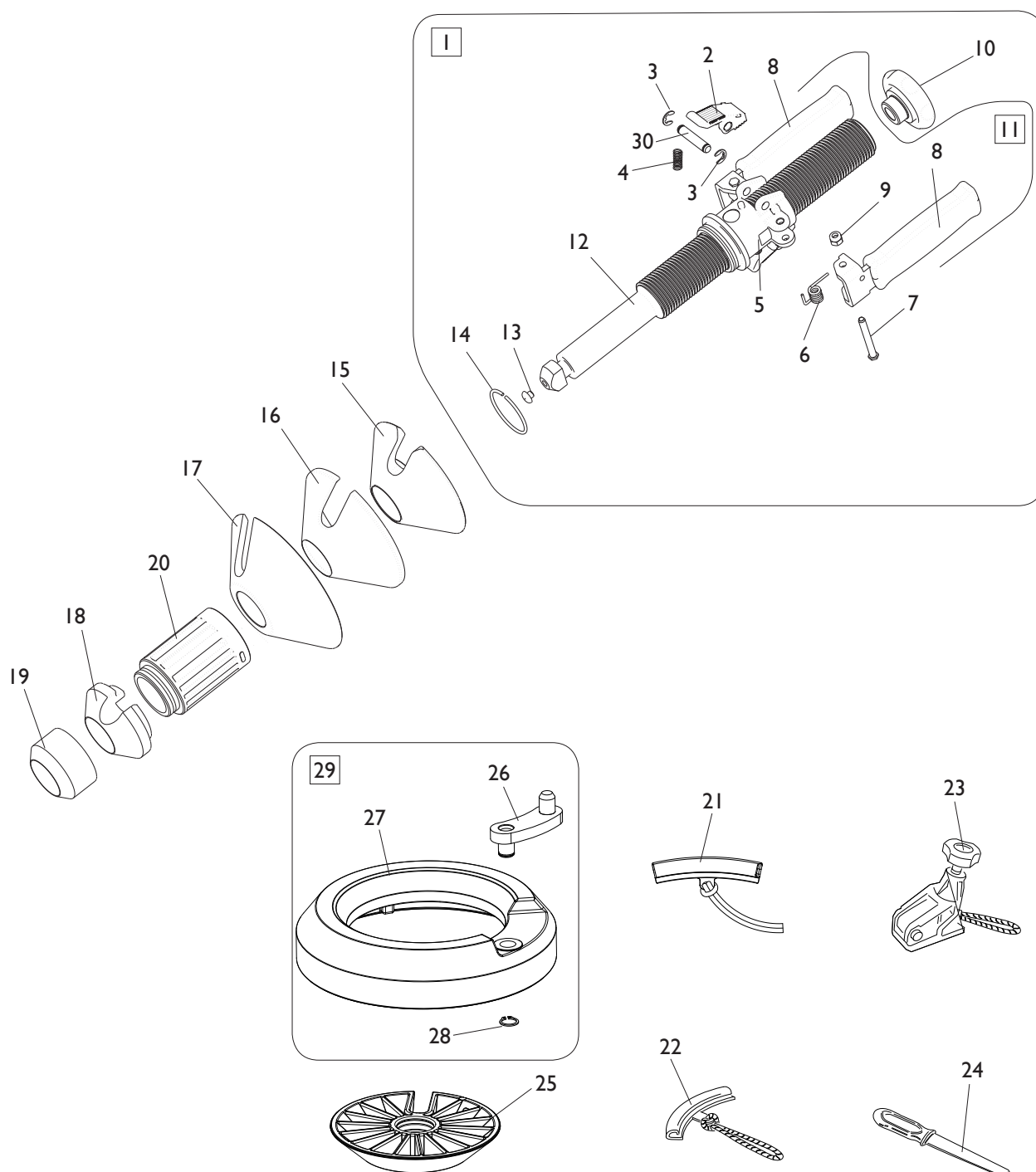
GRUPPO PEDALIERA PEDAL GROUP



[TORNA AL COMPLESSIVO](#)
[RETURNS TO OVERALL](#)

| Rif. Ref. | Codice Code | Descrizione | Description |
|--------------|----------------|--------------------------------|---------------------------------------|
| 1 | 5-108304/00 | PEDALIERA COMANDI COMPLETA | PEDAL ASSEMBLY |
| 2 | 4-118200 | COPERCHIO PEDALIERA | PEDAL COVER |
| 3 | 2-00211 | RONDELLA D.6 | WASHER D.6 |
| 4 | 2-00309 | VTCEI M6X16 | CIRCULAR SOCKET HEAD SCREW M6X16 |
| 5 | 5-100129 | TUBO DI GONFIAGGIO | INFLATING HOSE |
| 6 | 2-00104 | DADO ES.CIECO M6 | HEXAGON NUT M6 |
| 7 | 361537 | TONDO D.8 | PIN D.8 |
| 8 | 2-00025 | ANELLO D.12 | SEEGER D.12 |
| 9 | 2-00214 | RONDELLA D.14 | WASHER D.14 |
| 10 | 4-103656 | PERNO | PIN |
| 11 | 340313 | DISTANZIALE PEDALI | PEDALS SPACER |
| 12 | 4-103658 | DISTANZIALE FORATO D.12,1X16X9 | SPACER D.12,1X16X9 |
| 13 | 5-102714 | PEDALE | PEDAL |
| 14 | 2-00728 | VTCEI M6X14 | CIRCULAR SOCKET HEAD SCREW M6X14 |
| 15 | 5-120136 | BASAMENTO PEDALIERA | PEDAL BASE |
| 16 | 2-00150 | DADO ES.N. M6 | NORMAL HEXAGON NUT M6 |
| 17 | 2-00310 | VTCEI M6X20 | CIRCULAR SOCKET HEAD SCREW M6X20 |
| 18 | 2-00362 | VTE M6X20 | HEXAGON SOCKET HEAD SCREW M6X20 |
| 19 | 3-03504 | RACCPN-GOMITO-T-T-T8 | FITTING T-T-T8 |
| 20 | 4-121270 | STAFFA VALVOLA GONFIAGGIO | BRACKET |
| 21 | 2-02804 | DADO ES. M4 | HEXAGON NUT M4 |
| 22 | 5-107453 | LIMITATORE DI GONFIAGGIO CPL. | LIMITER INFLATION ASSEMBLY |
| 23 | 2-00291 | VTCEI M4X20 | CIRCULAR SOCKET HEAD SCREW M4X20 |
| 24 | 3-03313 | LIMITATORE DI GONFIAGGIO | LIMITER INFLATION |
| 25 | 2-00851 | VTCEI 1/2F M4X40 | CIRCULAR SOCKET HEAD SCREW 1/2F M4X40 |
| 26 | 361524 | LAMIERA SUPPORTO MICRO | MICRO SUPPORT |
| 27 | 2-00578 | VTCIC M3X30 | SCREW M3X30 |
| 28 | 2-00208 | RONDELLA D.3 | WASHER D.3 |
| 29 | 2-00124 | DADO ES.A. M3 | AUTOLOCKING HEXAGON NUT M3 |
| 30 | 2-71547 | ROSETTA D.3 | WASHER D.3 |
| 31 | 2-00576 | VTCIC M3X20 | SCREW M3X20 |
| 32 | 440874 | MICRO | MICROSWITCH |
| 33 | 2-00369 | VTE M6X60 | HEXAGON SOCKET HEAD SCREW M6X60 |
| 34 | 461535 | BLOCCHETTO MICRO | BLOCK |
| 35 | 4-109664 | MOLLA COMANDO INTERRUETTORE | COMMAND SPRING |
| 36 | 3-01176 | RACCPN-RESCA-L-G1/8-T6 | RESCA FITTING 1/8 |
| 37 | 3-01178 | VALVOLA | VALVE |
| 38 | 3-00218 | RACCPN-L-G1/8C-T8 | FITTING 1/8 |
| 39 | 3-00049 | RACCPN-LO-G1/8G-T8 | FITTING 1/8 |
| 40 | 5-100628 | VALVOLA DI GONFIAGGIO | INFLATING VALVE |
| 41 | 2-00209 | RONDELLA D.4 | WASHER D.4 |
| 42 | 410628 | MOLLA D.14X2X105 | SPRING D.14X2X105 |

MANIGLIA BLOCCAGGIO RUOTA HANDLE LOCKING WHEEL

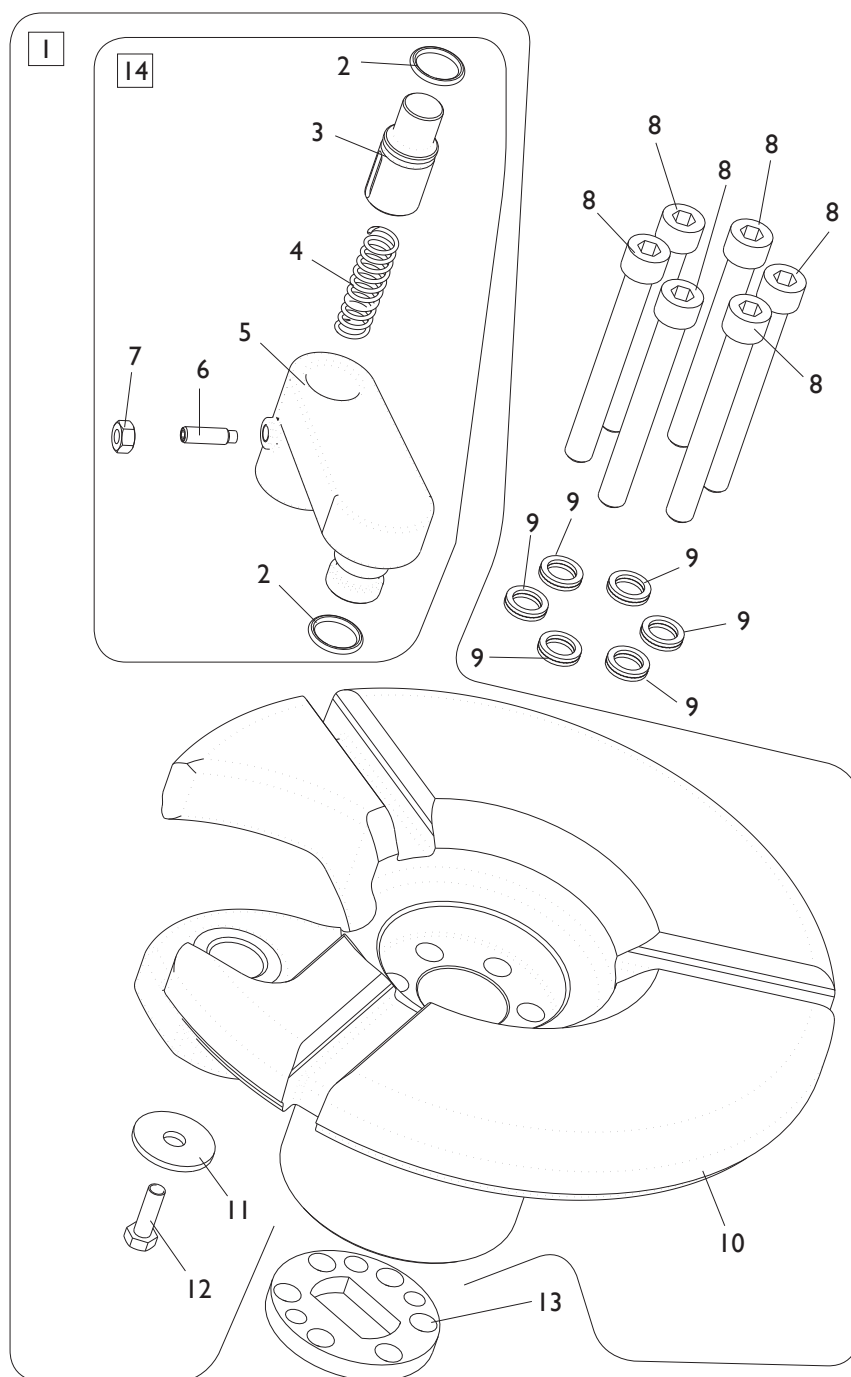


[TORNA AL COMPLESSIVO](#)
[RETURNS TO OVERALL](#)

| Rif. Ref. | Codice Code | Descrizione | Description |
|--------------|----------------|-------------------------------|-----------------------------------|
| 1 | 5-101197 | MANIGLIA BLOCCAGGIO RUOTA | HANDLE LOCKING WHEEL ASSEMBLY |
| 2 | 4-104822 | CRICCHETTO GHIERA D.8 | CLAMPING NUT |
| 3 | 2-00021 | SEEGER D.8 | SEEGER D.8 |
| 4 | 4-103675 | MOLLA D.8X20X1 | SPRING D.8X20X1 |
| 5 | 4-103226 | CORPO GHIERA SERRAGGIO | BODY |
| 6 | 4-103673 | MOLLA RICHIAMO LEVA | LEVER RETURN SPRING |
| 7 | 4-104809 | PERNO FISSAGGIO LEVA MANIGLIA | FIXING PIN LEVER HANDLE |
| 8 | 5-101931 | MANOPOLA CON LEVA | HANDLE WITH LEVER |
| 9 | 2-01257 | DADO ES.N.A. M6 | NORMAL AUTOLOCKING HEXAGON NUT M6 |
| 10 | 4-103669 | MANOPOLA D.60 M24 NERA | BLACK HANDLE D.60 M24 |
| 11 | 5-103532 | GHIERA DI SERRAGGIO | CLAMPING NUT |
| 12 | 4-103668 | BARRA BLOCCAGGIO RUOTA | LOCKING WHEEL BAR |
| 13 | 461560 | PROTEZIONE | RUBBER |
| 14 | 4-119835 | ANELLO TONDO D.50X45X2,5 | RING D.48X2,5 D.50X45X2,5 |
| 15 | 4-103230 | CONO D.120 | CONE D.120 |
| 16 | 4-103232 | CUFFIA PROTEZIONE CONO D.120 | PROTECTION CONE D.120 |
| 17 | 4-103229 | CONO D.145 | CONE D.145 |
| 18 | 4-118294 | CONO D.74 | CONE D.74 |
| 19 | 4-103235 | CONO D.58 | CONE D.58 |
| 20 | 5-102722 | PROLUNGA MANIGLIA | HANDLE EXTENTION |
| 21 | 5-491007 | KIT 3 PARABORDI CORTI | THREE SHORT FENDER KIT |
| 22 | 2201716 | KIT 3 PARABORDI | TREE FENDER KIT |
| 23 | 262417 | PINZA RUN FLAT | CLAMP RUN FLAT |
| 24 | 4-405496 | PROTEZIONE TALLONE | HEEL PROTECTION |
| 25 | 4-103233 | CONO D.187 | CONE D.187 |
| 26 | 4-103110 | MANOVELLA | CRANK |
| 27 | 4-102360 | ANELLO DISTANZIALE | SPACER RING |
| 28 | 2-00026 | SEEGER D.14 | SEEGER D.14 |
| 29 | 5-100690 | ANELLO DISTANZIALE COMPLETO | SPACER RING ASSEMBLY |
| 30 | 4-104810 | PERNO | PIN |

GRUPPO AUTOCENTRANTE

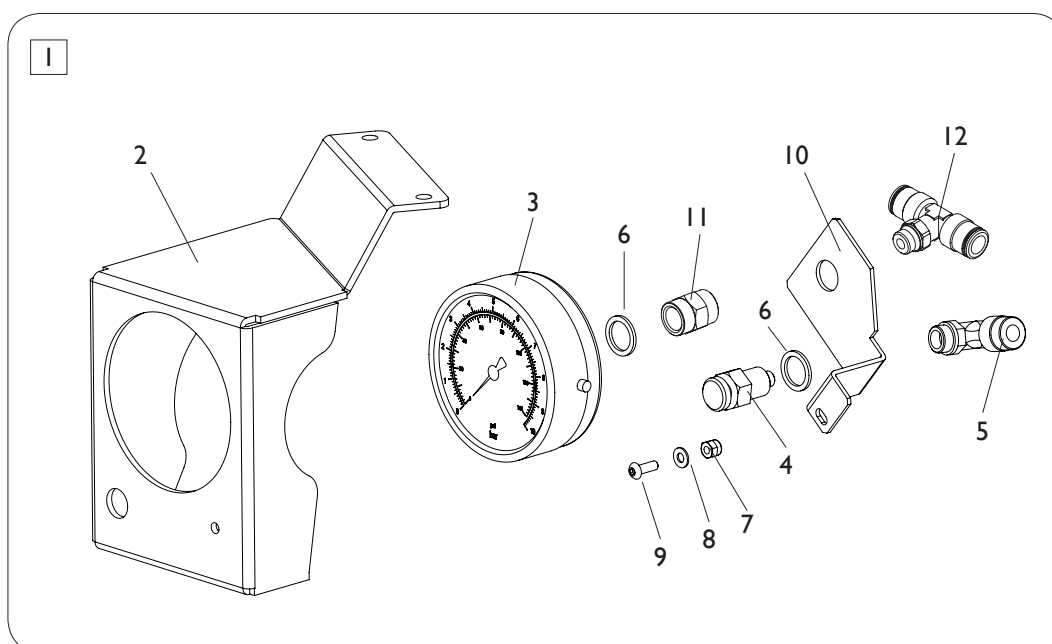
TURNTABLE GROUP



[TORNA AL COMPLESSIVO](#)
[RETURNS TO OVERALL](#)

| Rif. Ref. | Codice Code | Descrizione | Description |
|--------------|----------------|-----------------------------|----------------------------------|
| 1 | 5-101199 | AUTOCENTRANTE COMPLETO | TURNTABLE ASSEMBLY |
| 2 | 424630 | OR D.12,42X1,78 | O-RING D.12,42X1,78 |
| 3 | 4-102326 | PERNO TRASCINATORE | PIN |
| 4 | 4-102331 | MOLLA PERNO TRASCINATORE | PIN SPRING |
| 5 | 4-103143 | LEVA | LEVER |
| 6 | 2-02560 | VSTEI M5X16 | CSK SCREW SOCKET M5X16 |
| 7 | 2-00676 | DADO ES.N. M5 | NORMAL HEXAGON NUT M5 |
| 8 | 4-104811 | VTCEI M8X70 | CIRCULAR SOCKET HEAD SCREW M8X70 |
| 9 | 4-102752 | RONDELLA ANTISVITAMENTO D.8 | WASHER D.8 |
| 10 | 4-103152 | CENTRAGGIO RUOTE | TURNTABLE |
| 11 | 434168 | RONDELLA D.6,6X24X2 | WASHER D.6,6X24X2 |
| 12 | 2-00355 | VTE M5X16 | HEXAGON SOCKET HEAD SCREW M5X16 |
| 13 | 4-103142 | RONDELLA AGGANCIO RAPIDO | WASHER |
| 14 | 5-102707 | KIT LEVA CON PERNO | LEVER KIT |

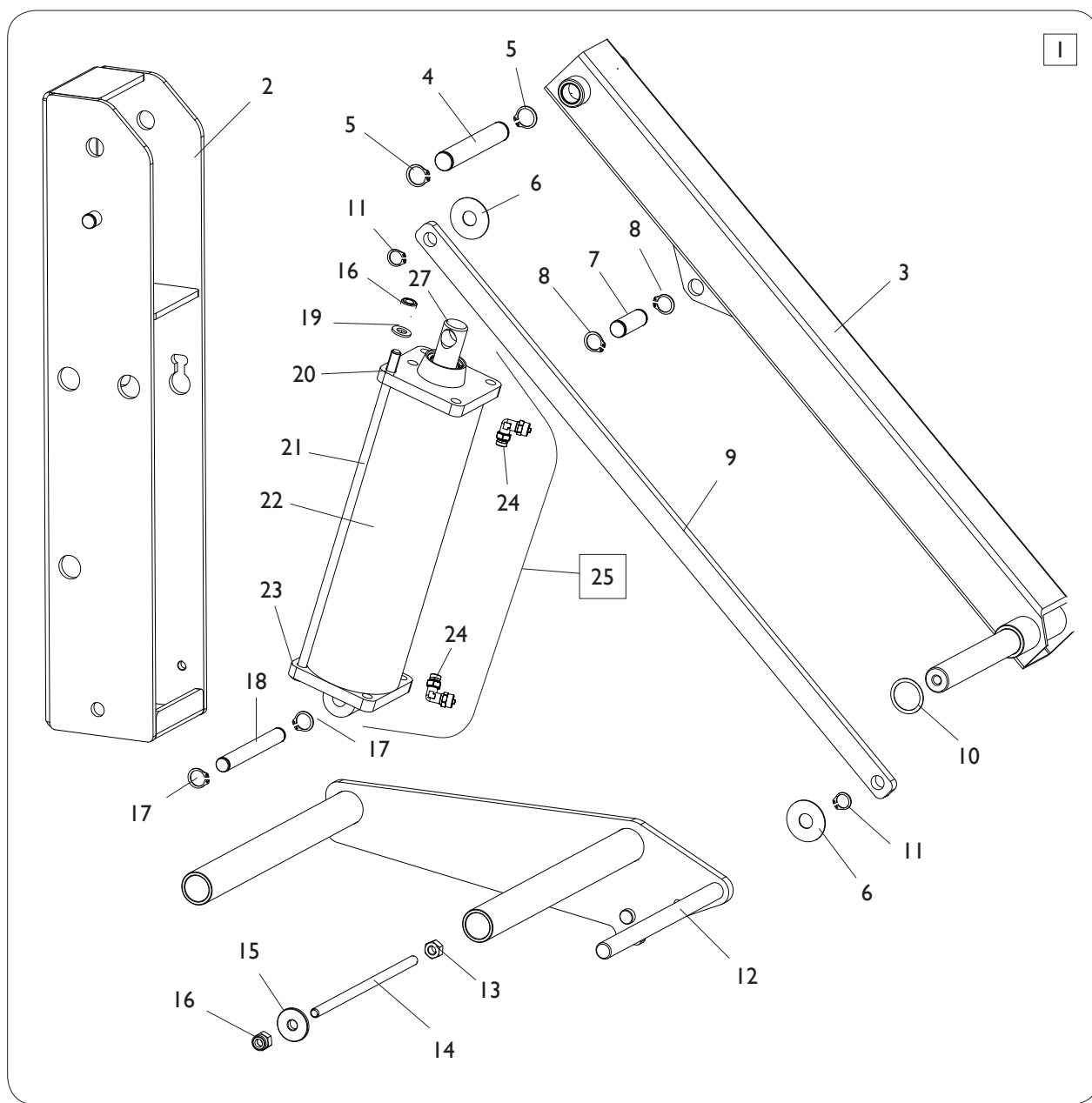
GRUPPO MANOMETRO GAUGE GROUP



[TORNA AL COMPLESSIVO](#)
[RETURNS TO OVERALL](#)

| Rif. Ref. | Codice Code | Descrizione | Description |
|--------------|--------------------|---------------------------------|---------------------------------|
| 1 | 5-107973/00 | COMANDO COMPLETO BAR/PSI | COMMAND ASSEMBLY BAR/PSI |
| 1 | 5-124770/00 | COMANDO COMPLETO KPA | COMMAND ASSEMBLY KPA |
| 2 | 4-122504 | STAFFA SUPPORTO MANOMETRO | PLATE |
| 3 | 3-00490 | MANOMETRO BAR/PSI | PRESSURE GAUGE BAR/PSI |
| 3 | 3-00493 | MANOMETRO KPA | PRESSURE GAUGE KPA |
| 4 | 235463 | VALVOLA SGONFIAGGIO | DEFLATION VALVE |
| 5 | 3-00055 | RACCPN-LO-G1/4G-T8 | LO-FITTING-G1/4G-T8 |
| 6 | 3-00449 | RONDELLA 1/4 | WASHER 1/4 |
| 7 | 2-01018 | DADO ES.A. M4 | AUTOLOCKING HEXAGON NUT M4 |
| 8 | 2-00209 | RONDELLA D.4 | WASHER D.4 |
| 9 | 2-02146 | VTBEI M4X12 | SCREW M4X12 |
| 10 | 4-112449 | SUPPORTO MANOMETRO | GAUGE PLATE |
| 11 | 3-00101 | RACCPN-MANICOTTO-G1/4-G1/4 | FITTING G1/4-G1/4 |
| 12 | 3-00287 | RACCPN-TO-G1/4CG-T8 | T-FITTING-G1/4CG-T8 |

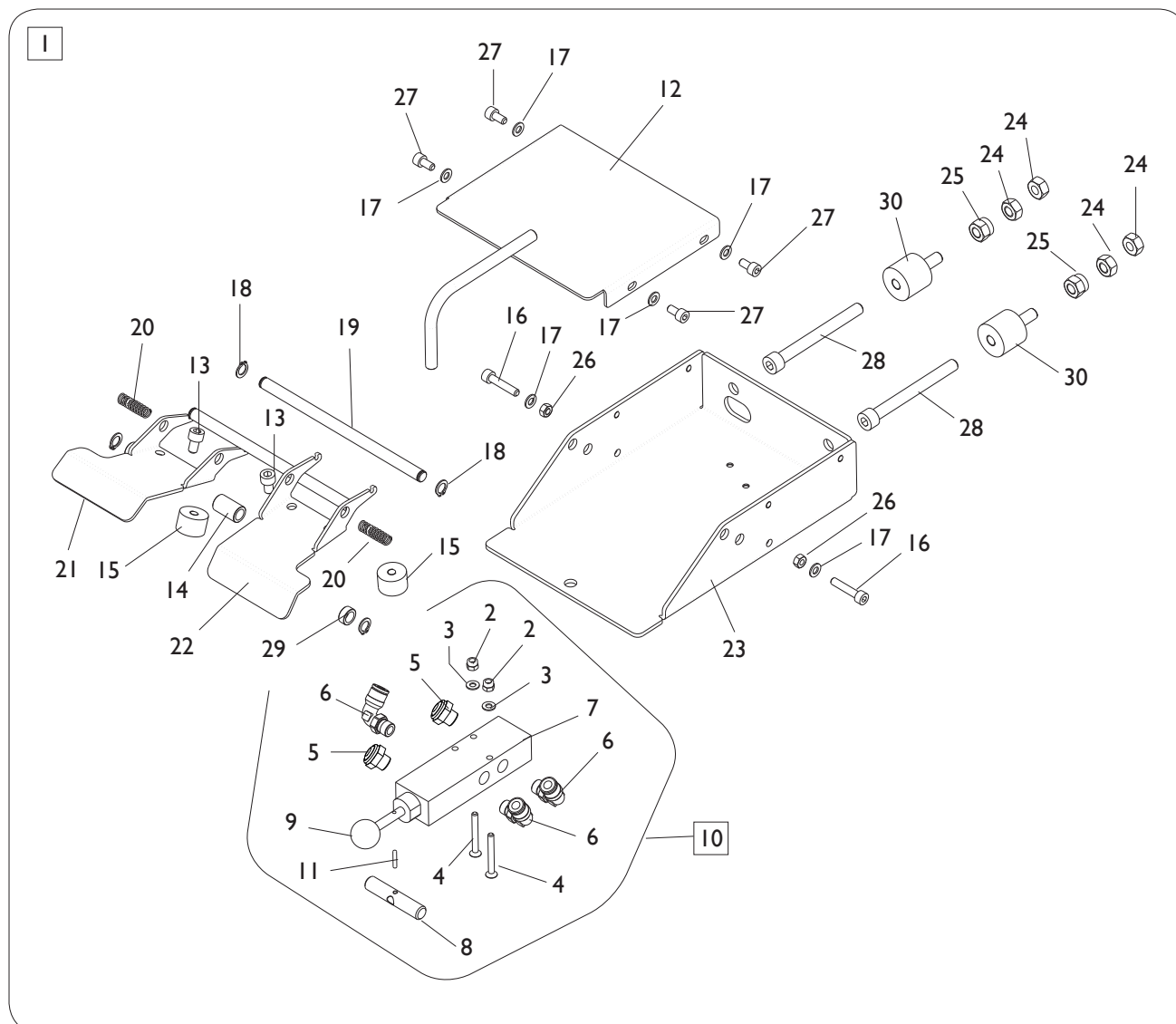
GRUPPO SOLLEVATORE LIFTER GROUP



[TORNA AL COMPLESSIVO](#)
[RETURNS TO OVERALL](#)

| Rif. Ref. | Codice Code | Descrizione | Description |
|--------------|----------------|-------------------------------------|-----------------------------------|
| 1 | 5-101212 | SOLLEVATORE COMPLETO | LIFTER ASSEMBLY |
| 2 | 4-103738 | TELAIO SOLLEVATORE | LIFTER BODY |
| 3 | 4-103733 | BRACCIO SOLLEVATORE | LIFTER ARM |
| 4 | 4-103725 | PERNO | PIN |
| 5 | 2-01130 | SEEGER D.16 | SEEGER D.16 |
| 6 | 344208 | RONDELLA D.12,5X36X1 | WASHER D.12,5X36X1 |
| 7 | 4-103723 | PERNO | PIN |
| 8 | 2-00026 | SEEGER D.14 | SEEGER D.14 |
| 9 | 4-103722 | BIELLA | CONNECTING ROD |
| 10 | 325561 | RONDELLA D.24X29,8X0,5 | WASHER D.24X29,8X0,5 |
| 11 | 2-00025 | SEEGER D.12 | SEEGER D.12 |
| 12 | 4-103728 | SUPPORTO RUOTA | WHEEL SUPPORT |
| 13 | 2-00151 | DADO ES.N. M8 | NORMAL HEXAGON NUT M8 |
| 14 | 4-103727 | BARRA FILETTATA M8 | THREADED BAR |
| 15 | 4-103726 | RONDELLA DI BLOCCAGGIO | WASHER |
| 16 | 2-01020 | DADO ES.N.A. M8 | NORMAL AUTOLOCKING HEXAGON NUT M8 |
| 17 | 2-00026 | SEEGER D.14 | SEEGER D.14 |
| 18 | 4-103724 | PERNO | PIN |
| 19 | 2-00212 | RONDELLA D.8 | WASHER D.8 |
| 20 | 5-121316 | FLANGIA ANT. D.75 + BOCCOLA | FRONT FLANGE D.75 WITH BUSH |
| 21 | 4-130462 | TIRANTE M8X295 | TIE ROD M8X295 |
| 22 | 4-130460 | CAMICIA D.75X266 | LINER D.75X266 |
| 23 | 4-130464 | FLANGIA POSTERIORE D.75 | REAR FLANGE D.75 |
| 24 | 5-102686 | RACCPN-LO-G1/8G-T6 + STROZZ. D.1,75 | FITTING 1/8 |
| 25 | 5-101215 | CILINDRO SOLLEVATORE COMPLETO | CYLINDER LIFTER ASSEMBLY |
| 26 | 262382 | KIT GUARNIZIONI CILINDRO D.75 | SEALS KIT CYLINDER LIFTER |
| 27 | 4-130459 | STELO D.20X317 | STEM D.20X317 |

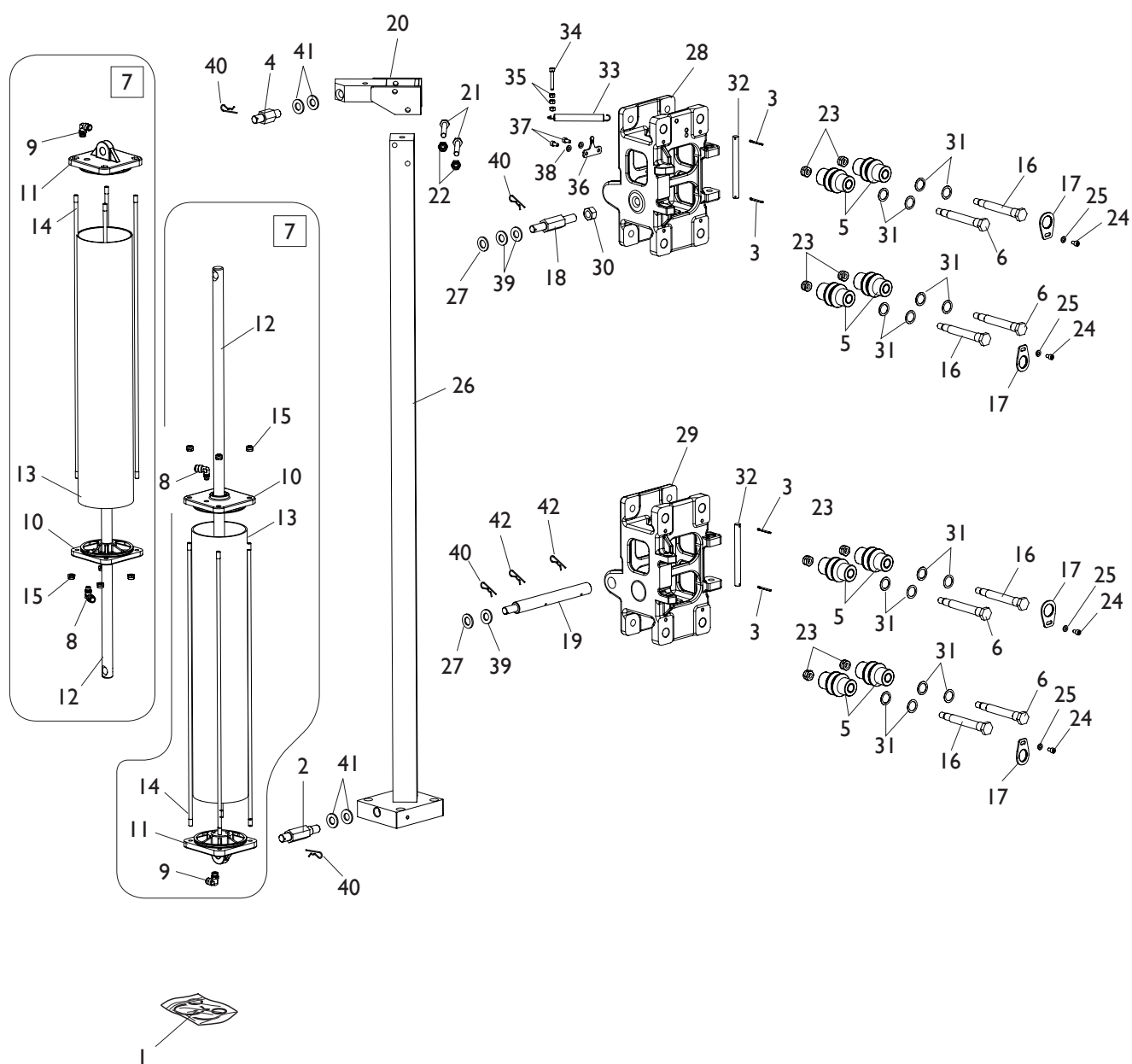
GRUPPO PEDALIERA SOLLEVATORE PEDAL LIFTER GROUP



[TORNA AL COMPLESSIVO](#)
[RETURNS TO OVERALL](#)

| Rif. Ref. | Codice Code | Descrizione | Description |
|--------------|----------------|--------------------------------|-----------------------------------|
| 1 | 5-101213 | PEDALIERA SOLLEVATORE COMPLETA | PEDAL LIFTER ASSEMBLY |
| 2 | 2-01018 | DADO ES.N.A. M4 | NORMAL AUTOLOCKING HEXAGON NUT M8 |
| 3 | 2-00209 | RONDELLA D.4 | WASHER D.4 |
| 4 | 2-01212 | VTSPEI M4X35 | CSK SCREW FLAT SOCKET M4X35 |
| 5 | 3-00181 | SILENZIATORE 1/8 | SILENCER 1/8 |
| 6 | 3-00053 | RACCPN-LO-G1/8G-T6 | FITTING 1/8 |
| 7 | 3-01642 | VALVOLA SOLLEVATORE | LIFTER VALVE |
| 8 | 4-103750 | PERNO AZIONAMENTO VALVOLA | VALVE PIN |
| 9 | 3-03029 | POMOLO | KNOB |
| 10 | 5-102696 | VALVOLA SOLLEVATORE COMPLETA | LIFETR VALVE ASSEMBLY |
| 11 | 2-01201 | SPINA D.2,5X16 | PIN D.2,5X16 |
| 12 | 4-103747 | COPERTURA PEDALIERA | PEDAL COVER |
| 13 | 2-00308 | VTCEI M6X10 | CIRCULAR SOCKET HEAD SCREW M6X10 |
| 14 | 4-103746 | DISTANZIALE FORATO D.12X8,2X20 | SPACER D.12X8,2X20 |
| 15 | 441675 | ANTIVIBRANTE 20X13 M6X6 | ANTIVIBRATION 20X13 M6X6 |
| 16 | 2-00299 | VTCEI M5X25 | CIRCULAR SOCKET HEAD SCREW M5X25 |
| 17 | 2-00210 | RONDELLA D.5 | WASHER D.5 |
| 18 | 2-00021 | SEEGER D.8 | SEEGER D.8 |
| 19 | 4-103742 | PERNO | PIN |
| 20 | 4-104551 | MOLLA D.2X12X28 | SPRING D.2X12X28 |
| 21 | 4-104835 | PEDALE SOLLEVATORE SX | PEDAL LEFT |
| 22 | 4-104836 | PEDALE SOLLEVATORE DX | PEDAL RIGHT |
| 23 | 4-103745 | BASAMENTO PEDALIERA | PEDAL BASE |
| 24 | 2-00151 | DADO ES. M8 | HEXAGON NUT M8 |
| 25 | 2-01020 | DADO ES.A. M8 | AUTOLOCKING HEAGON NUT M8 |
| 26 | 2-00676 | DADO ES.N. M5 | NORMAL HEXAGON NUT M5 |
| 27 | 2-00891 | VTCEI M5X10 | HEXAGON SOCKET HEAD SCREW M5X10 |
| 28 | 2-02826 | VTE M8X80 | HEXAGON HEAD SCREW M8X80 |
| 29 | 4-103744 | DISTANZIALE D.12X8,2X20 | SPACER D.12X8,2X20 |
| 30 | 4-104848 | ANTIVIBRANTE 25X22 M8 | ANTIVIBRATION 25X22 M8 |

GRUPPO CARRELLI STALLONATORE BEAD BREAKER CARRIAGES GROUP

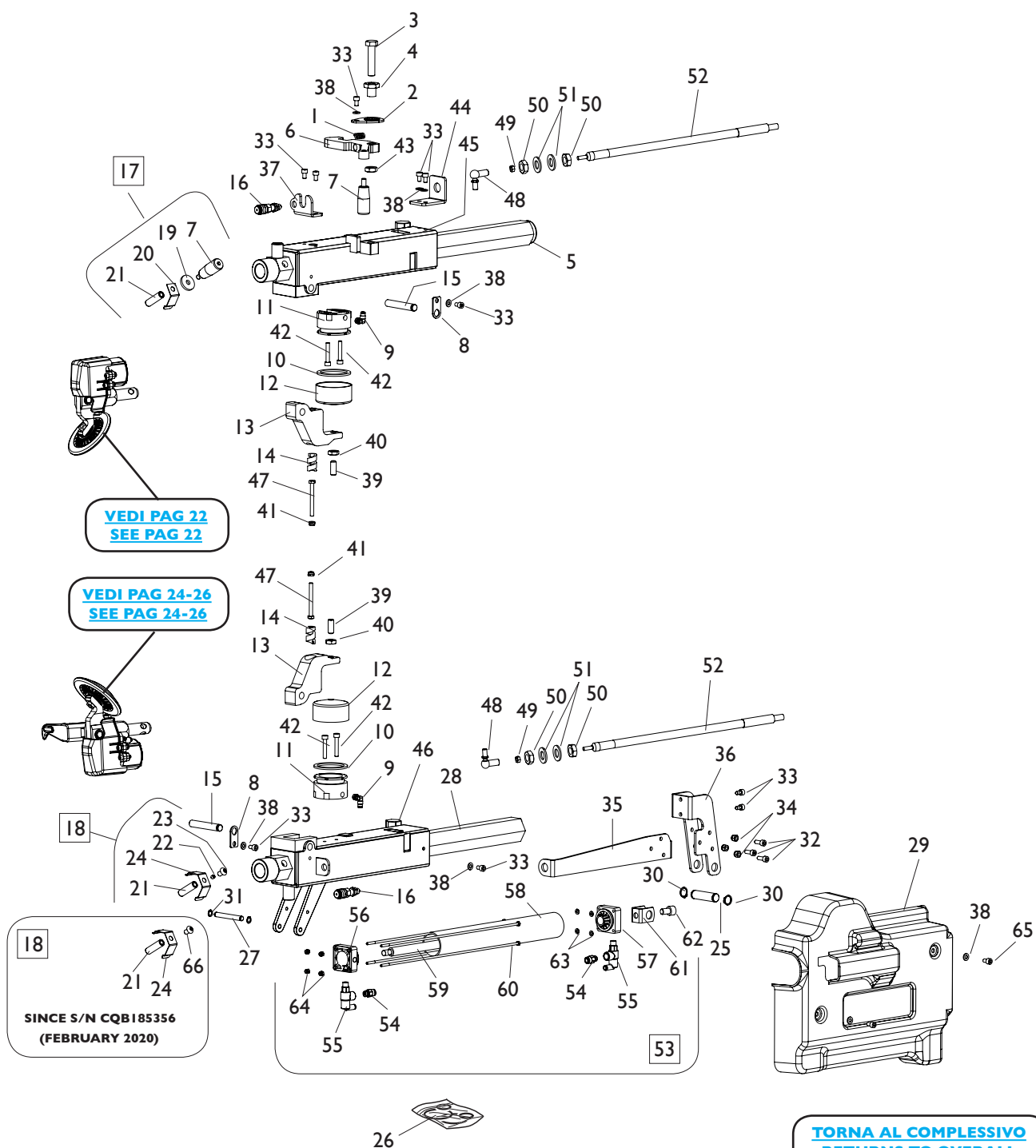


[TORNA AL COMPLESSIVO](#)
[RETURNS TO OVERALL](#)

| Rif. Ref. | Codice Code | Descrizione | Description |
|--------------|----------------|----------------------------------|---------------------------------|
| 1 | 245067 | KIT GUARNIZIONI CILINDRO D.110 | CYLINDER D.110 SEALS KIT |
| 2 | 4-108234 | PERNO D.16X105 | PIN D.16X105 |
| 3 | 2-00047 | COPIGLIA D.3X30 | PIN D.3X30 |
| 4 | 4-108251 | PERNO FULCRO CILINDRO | CYLINDER FULCRUM PIN |
| 5 | 5-104000 | RULLO CON BOCCOLA | ROLLER WITH BUSH |
| 6 | 4-108167 | PERNO FISSO | PIN |
| 7 | 5-102902 | CILINDRO CPL. D.110X538 | CYLINDER ASSEMBLY D.110X538 |
| 8 | 3-00059 | RACCPN-LO-G1/8C-T8 | LO-FITTING-G1/8C-T8 |
| 9 | 3-00055 | RACCPN-LO-G1/4M-T8 | LO-FITTING-G1/4M-T8 |
| 10 | 5-107559 | FLANGIA ANT. D.110 | FRONT FLANGE D.110 |
| 11 | 4-130671 | FLANGIA POST.D.110 | REAR FLANGE D.110 |
| 12 | 4-130929 | STELO D.22X633 | STEM D.22X633 |
| 13 | 4-130966 | CAMICIA D.110X581 | LINER D.110X581 |
| 14 | 4-130676 | TIRANTE M8X618,5 | TIE ROD M8X618,5 |
| 15 | 2-01137 | DADO ES.A. M8 | AUTOLOCKING HEXAGON NUT M8 |
| 16 | 4-108168 | PERNO ECCENTRICO | ECCENTRIC PIN |
| 17 | 4-108165 | LAMIERA FERMO ECCENTRICO | PLATE FOR ECCENTRIC PIN |
| 18 | 4-108217 | PERNO FULCRO CILINDRO | CYLINDER FULCRUM PIN |
| 19 | 4-108164 | PERNO CILINDRO | CYLINDER PIN |
| 20 | 4-108252 | STAFFA ATTACCO SUP. STALLONATORE | BEAD BRACKET |
| 21 | 2-00996 | VTE M10X80 | HEXAGON HEAD SCREW M10X80 |
| 22 | 2-01019 | DADO ES.A. M10 | AUTOLOCKING HEXAGON NUT M10 |
| 23 | 2-01276 | DADO ES.A. M12 | AUTOLOCKING HEXAGON NUT M12 |
| 24 | 2-00308 | VTCEI M6X10 | HEXAGON SOCKET HEAD SCREW M6X10 |
| 25 | 2-01113 | RONDELLA D.6 | WASHER D.6 |
| 26 | 4-108233 | MONTANTE STALLONATORE | BAR |
| 27 | 2-01045 | RONDELLA D.16 | WASHER D.16 |
| 28 | 5-103534 | CARRELLO SUPERIORE | UPPER CARRIAGE |
| 29 | 5-103535 | CARRELLO INFERIORE | LOWER CARRIAGE |
| 30 | 2-00991 | DADO ES. M16X1,5 | HEXAGON NUT M16X1,5 |
| 31 | 429599 | RONDELLA D. 20X28X0,2 | WASHER D. 20X28X0,2 |
| 32 | 4-105687 | PERNO FULCRO CONSOLLE | CONSOLLE FULCRUM PIN |
| 33 | 410628 | MOLLA D.14X2X105 | SPRING D.14X2X105 |
| 34 | 2-00314 | VTCEI M6X40 | HEXAGON SOCKET HAED SCREW M6X40 |
| 35 | 2-00111 | DADO ES. M6 | HEXAGON NUT M6 |
| 36 | 4-109901 | STAFFA ATTACCO MOLLA | SPRING BRACKET |
| 37 | 2-02817 | VTCEI M6X12 | HEXAGON SOCKET HEAD SCREW M6X12 |
| 38 | 2-00211 | RONDELLA D.6 | WASHER D.6 |
| 39 | 354032 | RONDELLA D.15,25X30X3 | WASHER D.15,25X30X3 |
| 40 | 435055 | COPIGLIA D.2X40 | SPRING D.2X40 |
| 41 | 4-101681 | RONDELLA D.17X22X1 | WASHER D.17X22X1 |
| 42 | 2-02221 | COPIGLIA D.4 | SPRING D.4 |
| 43 | 2-01122 | SEEGER D.15 | ANELLO D.15 |
| 44 | 2-01045 | RONDELLA D.16 | WASHER D.16 |
| 45 | 2-01130 | SEEGER D.16 | SEEGER D.16 |

GRUPPO BRACCI STALLONATORI

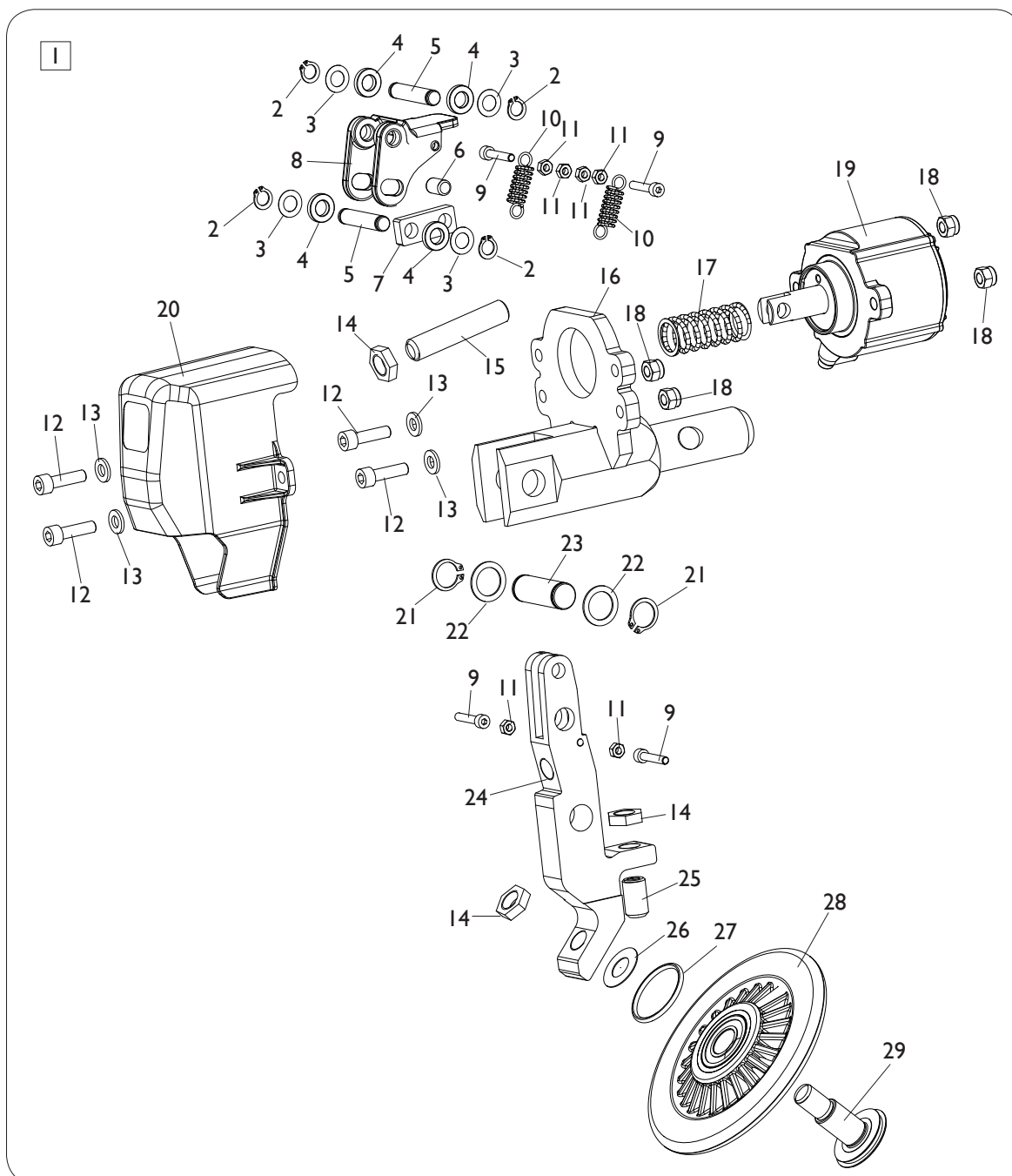
BEAD ARMS GROUP



| Ref. | Code | Descrizione | Description |
|------|----------|--------------------------------|--------------------------------|
| 1 | 461435 | MOLLA MANIGLIA | HANDLE SPRING |
| 2 | 4-108219 | LAMIERA FERMO ECCENTRICO | PLATE |
| 3 | 2-01160 | VTE 1/2F M12X55 | HEXAGON HEAD SCREW 1/2F M12X55 |
| 4 | 4-108223 | BOCCOLA ECCENTRICA | ECCENTRIC BUSH |
| 5 | 4-118916 | BARRA PORTA UTENSILE SUPERIORE | HEXAGON BAR |

| Ref. | Code | Descrizione | Description |
|------|----------|--------------------------------------|----------------------------------|
| 6 | 4-108224 | GANCIO STALLONATORE | HOOK |
| 7 | 4-104541 | MANOPOLA M8 H50 | HANDLE M8 H50 |
| 8 | 4-108665 | PIASTRINO | PLATE |
| 9 | 3-00220 | RACCPN-L-G1/8-C-T4 | L-FITTING-G1/8-C-T4 |
| 10 | 443078 | GUARNIZIONE A LABBRO D.60X47,6X6,35 | O-RING D.60X47,6X6,35 |
| 11 | 443077 | PISTONE D.60X38 | PISTON D.60X38 |
| 12 | 326537 | CILINDRO D.60 | CYLINDER D.60 |
| 13 | 4-108218 | LEVA BLOCCAGGIO | LEVER |
| 14 | 431257 | MOLLA COMPRESSIONE D.8X16X32 | COMPRESSOR SPRING D.8X16X32 |
| 15 | 4-108173 | PERNO L.75mm | PIN L.75mm |
| 16 | 3-01645 | RACCPN-D-T6/4-GR5F | D-FITTING-T6/4-GR5F |
| 17 | 5-106298 | PERNO BLOCC. UTENSILE SUPERIORE CPL. | UPPER TOOL PIN ASSEMBLY |
| 18 | 5-106299 | PERNO BLOCC. UTENSILE INFERIORE CPL. | LOWER TOOL PIN ASSEMBLY |
| 19 | 307671 | RONDELLA D.8,25X28X4 | WASHER D.8,25X28X4 |
| 20 | 4-118919 | STAFFA | BRACKET |
| 21 | 4-118918 | PERNO BLOCCAGGIO D.12X41 | PIN D.12X41 |
| 22 | 2-02916 | VSTEI M6X6 | SCREW M6X6 |
| 23 | 2-02148 | VTBEI M8X12 | SCREW M8X12 |
| 24 | 4-105295 | LAMIERINO | PLATE |
| 25 | 4-108243 | PERNO L.51mm | PIN L.51mm |
| 26 | 5-103267 | KIT GUARNIZIONI CILINDRO ACCOST. | CYLINDER SEALS KIT |
| 27 | 4-108241 | PERNO L.66mm | PIN L.66mm |
| 28 | 4-108247 | BARRA PORTA UTENSILE INFERIORE | HEXAGON BAR |
| 29 | 4-108945 | PROTEZIONE STALLONATORE INFERIORE | COVER |
| 30 | 2-01122 | SEEGER D.15 | SEEGER D.15 |
| 31 | 2-00021 | SEEGER D.8 | SEEGER D.8 |
| 32 | 2-00309 | VTCEI M6X16 | HEXAGON SOCKET HEAD SCREW M6X16 |
| 33 | 2-01989 | VTCEI M6X10 | HEXAGON SOCKET HEAD SCREW M6X10 |
| 34 | 2-01257 | DADO ES.A. M6 | AUTOLOCKING HEXAGON NUT M6 |
| 35 | 4-108436 | FORCELLA ATTACCO GUAINA CAVO | PLATE |
| 36 | 4-108242 | FORCELLA ATTACCO CILINDRO | PLATE |
| 37 | 4-108272 | STAFFA | BRACKET |
| 38 | 2-00211 | RONDELLA D.6 | WASHER D.6 |
| 39 | 2-01291 | VSTEI M10X25 | SCREW M10X25 |
| 40 | 2-00157 | DADO ES. M10 | HEXAGON NUT M10 |
| 41 | 2-01979 | DADO ES.A. M6 | AUTOLOCKING HEXAGON NUT M6 |
| 42 | 2-00909 | VTCEI M6X35 | HEXAGON SOCKET HEAD SCREW M6X35 |
| 43 | 2-00158 | DADO ES. M12 | HEXAGON NUT M12 |
| 44 | 4-108216 | STAFFA ATTACCO GUAINA | BRACKET |
| 45 | 5-103536 | SUPPORTO BRACCIO SUPERIORE | UPPER SUPPORT |
| 46 | 5-103537 | SUPPORTO BRACCIO INFERIORE | LOWER SUPPORT |
| 47 | 2-00369 | VTE M6X60 | HEXAGON HEAD SCREW M6X60 |
| 48 | 5-105128 | KIT SNODO M8 | JOINT KIT M8 |
| 49 | 2-00146 | DADO ES. M6 | HEXAGON NUT M6 |
| 50 | 2-94030 | DADO ES. M14X1,5 | HEXAGON NUT M14X1,5 |
| 51 | 2-00215 | RONDELLA D.14 | WASHER D.14 |
| 52 | 4-108437 | CAVO PUSH-PULL CORSA 280mm | PUSH-PULL CABLE 280mm |
| 53 | 5-102904 | CILINDRO CPL. D.40X280 | CYLINDER ASSEMBLY D.40X280 |
| 54 | 3-00461 | RACCPN-D-G1/8G-T6 | D-FITTING-G1/8G-T6 |
| 55 | 3-03006 | VALVOLA | VALVE |
| 56 | 4-108322 | FLANGIA POSTERIORE D.40 | REAR FLANGE D.40 |
| 57 | 4-108323 | FLANGIA ANTERIORE D.40 | FRONT FLANGE D.40 |
| 58 | 4-108237 | CAMICIA | LINER |
| 59 | 4-108238 | STELO D.15X333 | STEM D.15X333 |
| 60 | 4-108239 | TIRANTE M4X350 | TIE-ROD M4X350 |
| 61 | 339908 | CAVALLOTTO | PLATE |
| 62 | 2-91723 | VTCEI M10X16 | HEXAGON SOCKET HEAD SCREW M10X16 |
| 63 | 2-00209 | RONDELLA D.4 | WASHER D.4 |
| 64 | 2-01018 | DADO ES.A. M4 | AUTOLOCKING HEXAGON NUT M4 |
| 65 | 2-00308 | VTCEI M6X10 | VTCEI M6X10 |
| 66 | 2-02144 | VTBEI M8X16 | SCREW M8X16 |

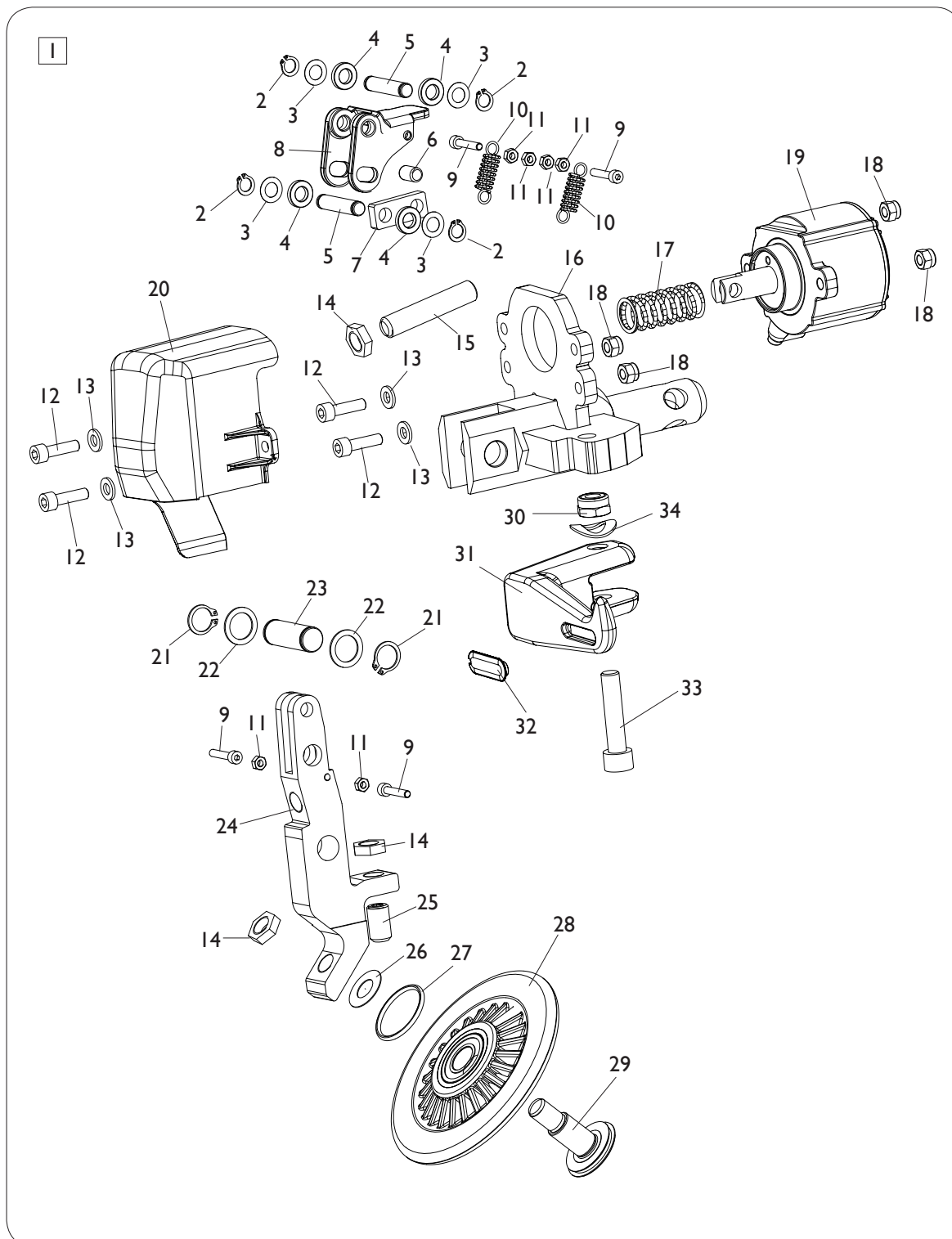
DISCO STALLONATORE SUPERIORE UPPER BEAD BREAKER DISC



[TORNA AL COMPLESSIVO](#)
[RETURNS TO OVERALL](#)

| Rif. Ref. | Codice Code | Descrizione | Description |
|--------------|----------------|--------------------------------|-----------------------------------|
| 1 | 5-103062 | DISCO STALLONATORE COMPLETO | BEAD BREAKER ASSEMBLY |
| 2 | 2-00021 | SEEGER D.8 | SEEGER D.8 |
| 3 | 301694 | RONDELLA D.14X8X0,2 | WASHER D.14X8X0,2 |
| 4 | 339856 | RONDELLA D.8,25X15X3 | WASHER D.8,25X15X3 |
| 5 | 4-106224 | PERNO | PIN |
| 6 | 4-106234 | PERNO FULCRO BIELLA | FULCRUM PIN |
| 7 | 4-106199 | BIELLA | CONNECTING ROD |
| 8 | 4-106025 | LAMIERA DI BLOCCO PENETRAZIONE | SHEET BLOCK |
| 9 | 2-00927 | VTCEI M4X22 | CIRCULAR SOCKET HEAD SCREW M4X22 |
| 10 | 4-106238 | MOLLA A TRAZIONE | SPRING |
| 11 | 2-00143 | DADO ES.N. M4 | NORMAL HEXAGON NUT M4 |
| 12 | 2-00934 | VTCEI M6X22 | CIRCULAR SOCKET HEAD SCREW M6X22 |
| 13 | 2-00211 | RONDELLA D.6 | WASHER D.6 |
| 14 | 4-106024 | DADO SPECIALE M12 | SPECIAL NUT M12 |
| 15 | 2-02398 | VSTEI M12X60 | CSK SCREW SOCKET M12X60 |
| 16 | 4-105853 | SUPPORTO | SUPPORT |
| 17 | 4-106235 | MOLLA D.20X45X2,2 | SPRING D.20X45X2,2 |
| 18 | 2-01257 | DADO ES.N.A. M6 | NORMAL AUTOLOCKING HEXAGON NUT M6 |
| 19 | 5-102062 | CILINDRO PNEUMATICO D.60 | CYLINDER D.60 |
| 20 | 4-108676 | CARTER | COVER |
| 21 | 2-00026 | SEEGER D.14 | SEEGER D.14 |
| 22 | 435005 | RONDELLA D.15X21X1 | WASHER D.15X21X1 |
| 23 | 4-103723 | PERNO | PIN |
| 24 | 4-106181 | SUPPORTO DISCO | DISK SUPPORT |
| 25 | 2-02096 | VSTEI M12X20 | CSK SCREW SOCKET M12X20 |
| 26 | 462117 | RONDELLA D.12X24X0,5 | WASHER D.12X24X0,5 |
| 27 | 421833 | OR D.29,82X2,62 | O-RING D.29,82X2,62 |
| 28 | 5-100688 | RULLO | ROLLER |
| 29 | 4-106180 | PERNO ANTISVITAMENTO | PIN |

DISCO STALLONATORE INFERIORE (OLD) LOWER BEAD BREAKER DISC (OLD)

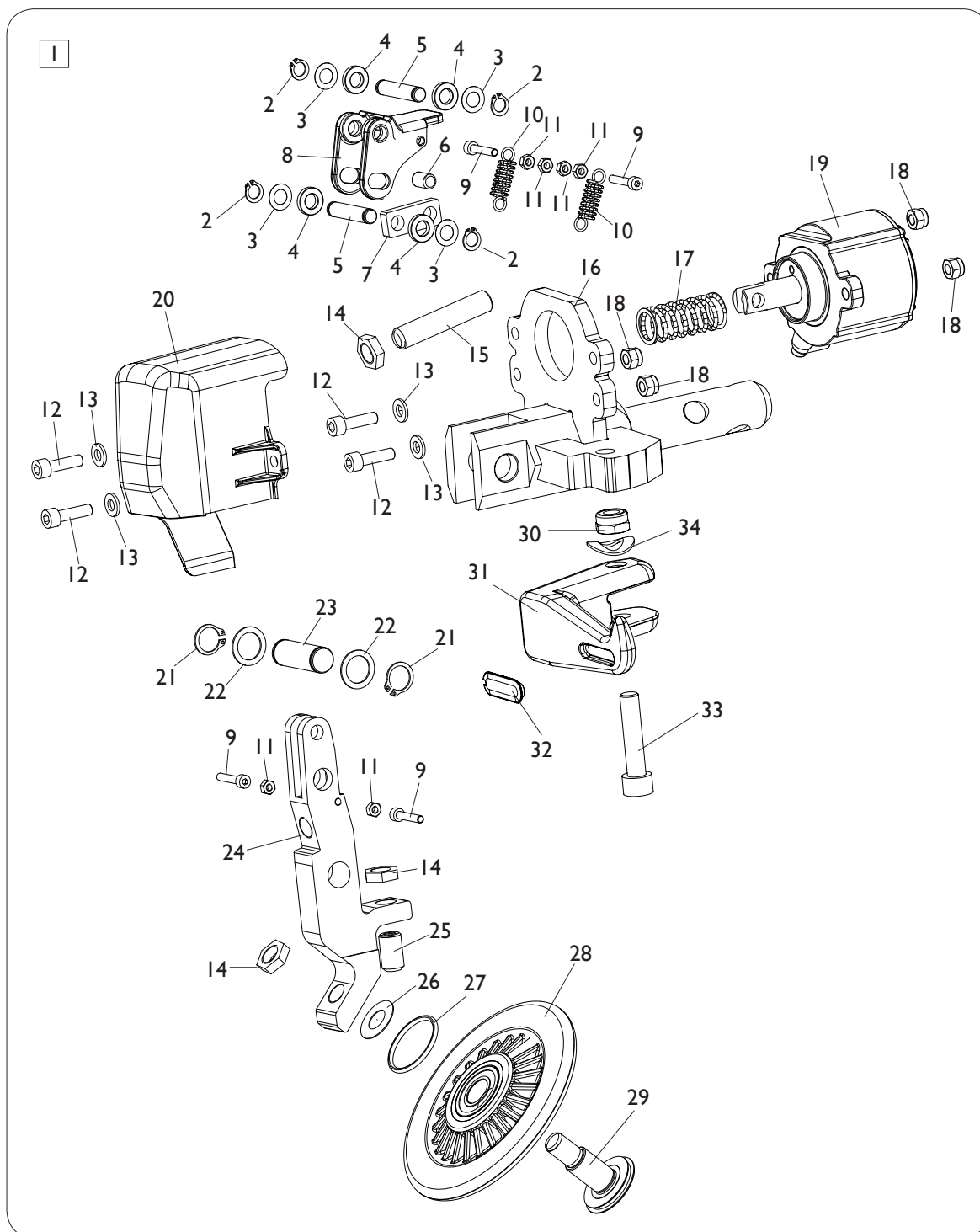


[TORNA AL COMPLESSIVO](#)
[RETURNS TO OVERALL](#)

| Rif. Ref. | Codice Code | Descrizione | Description |
|--------------|----------------|--------------------------------|-----------------------------------|
| 1 | 5-107972 | DISCO STALLONATORE COMPLETO | BEAD BREAKER ASSEMBLY |
| 2 | 2-00021 | SEEGER D.8 | SEEGER D.8 |
| 3 | 301694 | RONDELLA D.14X8X0,2 | WASHER D.14X8X0,2 |
| 4 | 339856 | RONDELLA D.8,25X15X3 | WASHER D.8,25X15X3 |
| 5 | 4-106224 | PERNO | PIN |
| 6 | 4-106234 | PERNO FULCRO BIELLA | FULCRUM PIN |
| 7 | 4-106199 | BIELLA | CONNECTING ROD |
| 8 | 4-106025 | LAMIERA DI BLOCCO PENETRAZIONE | SHEET BLOCK |
| 9 | 2-00927 | VTCEI M4X22 | CIRCULAR SOCKET HEAD SCREW M4X22 |
| 10 | 4-106238 | MOLLA A TRAZIONE | SPRING |
| 11 | 2-00143 | DADO ES.N. M4 | NORMAL HEXAGON NUT M4 |
| 12 | 2-00934 | VTCEI M6X22 | CIRCULAR SOCKET HEAD SCREW M6X22 |
| 13 | 2-00211 | RONDELLA D.6 | WASHER D.6 |
| 14 | 4-106024 | DADO SPECIALE M12 | SPECIAL NUT M12 |
| 15 | 2-02398 | VSTEI M12X60 | CSK SCREW SOCKET M12X60 |
| 16 | 4-122500 | SUPPORTO | SUPPORT |
| 17 | 4-106235 | MOLLA D.20X45X2,2 | SPRING D.20X45X2,2 |
| 18 | 2-01257 | DADO ES.N.A. M6 | NORMAL AUTOLOCKING HEXAGON NUT M6 |
| 19 | 5-102062 | CILINDRO PNEUMATICO D.60 | CYLINDER D.60 |
| 20 | 4-122530 | CARTER | COVER |
| 21 | 2-00026 | SEEGER D.14 | SEEGER D.14 |
| 22 | 435005 | RONDELLA D.15X21X1 | WASHER D.15X21X1 |
| 23 | 4-103723 | PERNO | PIN |
| 24 | 4-106181 | SUPPORTO DISCO | DISK SUPPORT |
| 25 | 2-02096 | VSTEI M12X20 | CSK SCREW SOCKET M12X20 |
| 26 | 462117 | RONDELLA D.12X24X0,5 | WASHER D.12X24X0,5 |
| 27 | 421833 | OR D.29,82X2,62 | O-RING D.29,82X2,62 |
| 28 | 5-100688 | RULLO | ROLLER |
| 29 | 4-106180 | PERNO ANTISVITAMENTO | PIN |
| 30 | 2-71525 | DADO ES.A. M10 | AUTOLOCKING HEXAGON NUT M10 |
| 31 | 4-122499 | UTENSILE | TOOL |
| 32 | 4-107970 | PROTEZIONE UTENSILE | INSERT |
| 33 | 2-01224 | VTCEI M10X45 | HEAXGON SOCKET HEAD SCREW M10X45 |
| 34 | 2-02249 | RONDELLA ELASTICA 13X24 | ELASTIC WASHER 13X24 |

DISCO STALLONATORE INFERIORE (NEW) LOWER BEAD BREAKER DISC (NEW)

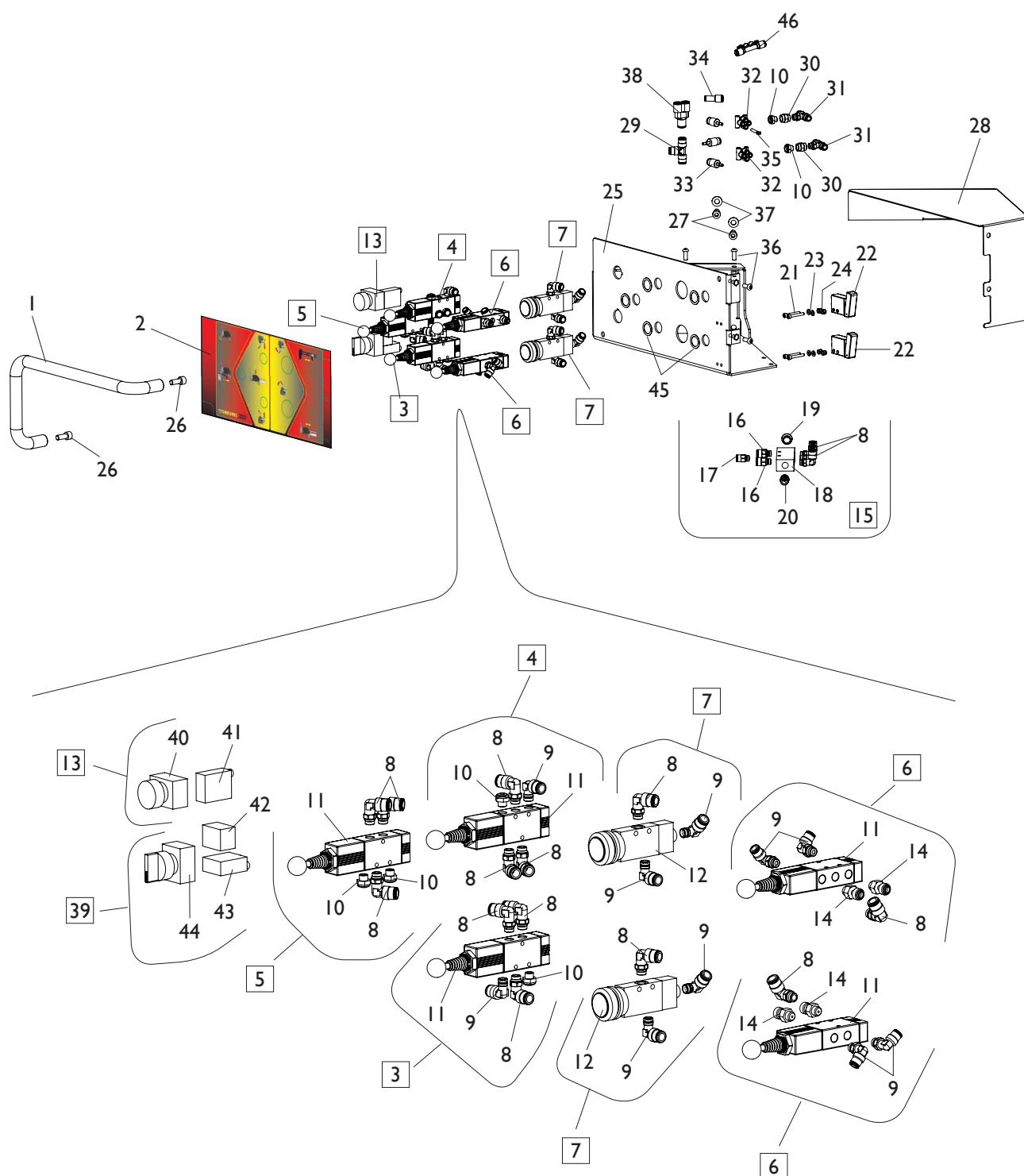
DALLA MATRICOLA CQB185356 (FEBBRAIO 2020)
SINCE S/N CQB185356 (FEBRUARY 2020)



[TORNA AL COMPLESSIVO](#)
[RETURNS TO OVERALL](#)

| Rif. Ref. | Codice Code | Descrizione | Description |
|--------------|-----------------|------------------------------------|-----------------------------------|
| 1 | 5-123637 | DISCO STALLONATORE COMPLETO | BEAD BREAKER ASSEMBLY |
| 2 | 2-00021 | SEEGER D.8 | SEEGER D.8 |
| 3 | 301694 | RONDELLA D.14X8X0,2 | WASHER D.14X8X0,2 |
| 4 | 339856 | RONDELLA D.8,25X15X3 | WASHER D.8,25X15X3 |
| 5 | 4-106224 | PERNO | PIN |
| 6 | 4-106234 | PERNO FULCRO BIELLA | FULCRUM PIN |
| 7 | 4-106199 | BIELLA | CONNECTING ROD |
| 8 | 4-106025 | LAMIERA DI BLOCCO PENETRAZIONE | SHEET BLOCK |
| 9 | 2-00927 | VTCEI M4X22 | CIRCULAR SOCKET HEAD SCREW M4X22 |
| 10 | 4-106238 | MOLLA A TRAZIONE | SPRING |
| 11 | 2-00143 | DADO ES.N. M4 | NORMAL HEXAGON NUT M4 |
| 12 | 2-00934 | VTCEI M6X22 | CIRCULAR SOCKET HEAD SCREW M6X22 |
| 13 | 2-00211 | RONDELLA D.6 | WASHER D.6 |
| 14 | 4-106024 | DADO SPECIALE M12 | SPECIAL NUT M12 |
| 15 | 2-02398 | VSTEI M12X60 | CSK SCREW SOCKET M12X60 |
| 16 | 4-138507 | SUPPORTO | SUPPORT |
| 17 | 4-106235 | MOLLA D.20X45X2,2 | SPRING D.20X45X2,2 |
| 18 | 2-01257 | DADO ES.N.A. M6 | NORMAL AUTOLOCKING HEXAGON NUT M6 |
| 19 | 5-102062 | CILINDRO PNEUMATICO D.60 | CYLINDER D.60 |
| 20 | 4-122530 | CARTER | COVER |
| 21 | 2-00026 | SEEGER D.14 | SEEGER D.14 |
| 22 | 435005 | RONDELLA D.15X21X1 | WASHER D.15X21X1 |
| 23 | 4-103723 | PERNO | PIN |
| 24 | 4-106181 | SUPPORTO DISCO | DISK SUPPORT |
| 25 | 2-02096 | VSTEI M12X20 | CSK SCREW SOCKET M12X20 |
| 26 | 462117 | RONDELLA D.12X24X0,5 | WASHER D.12X24X0,5 |
| 27 | 421833 | OR D.29,82X2,62 | O-RING D.29,82X2,62 |
| 28 | 5-100688 | RULLO | ROLLER |
| 29 | 4-106180 | PERNO ANTISVITAMENTO | PIN |
| 30 | 2-71525 | DADO ES.A. M10 | AUTOLOCKING HEXAGON NUT M10 |
| 31 | 4-122499 | UTENSILE | TOOL |
| 32 | 4-107970 | PROTEZIONE UTENSILE | INSERT |
| 33 | 2-01224 | VTCEI M10X45 | HEAXGON SOCKET HEAD SCREW M10X45 |
| 34 | 2-02249 | RONDELLA ELASTICA 13X24 | ELASTIC WASHER 13X24 |

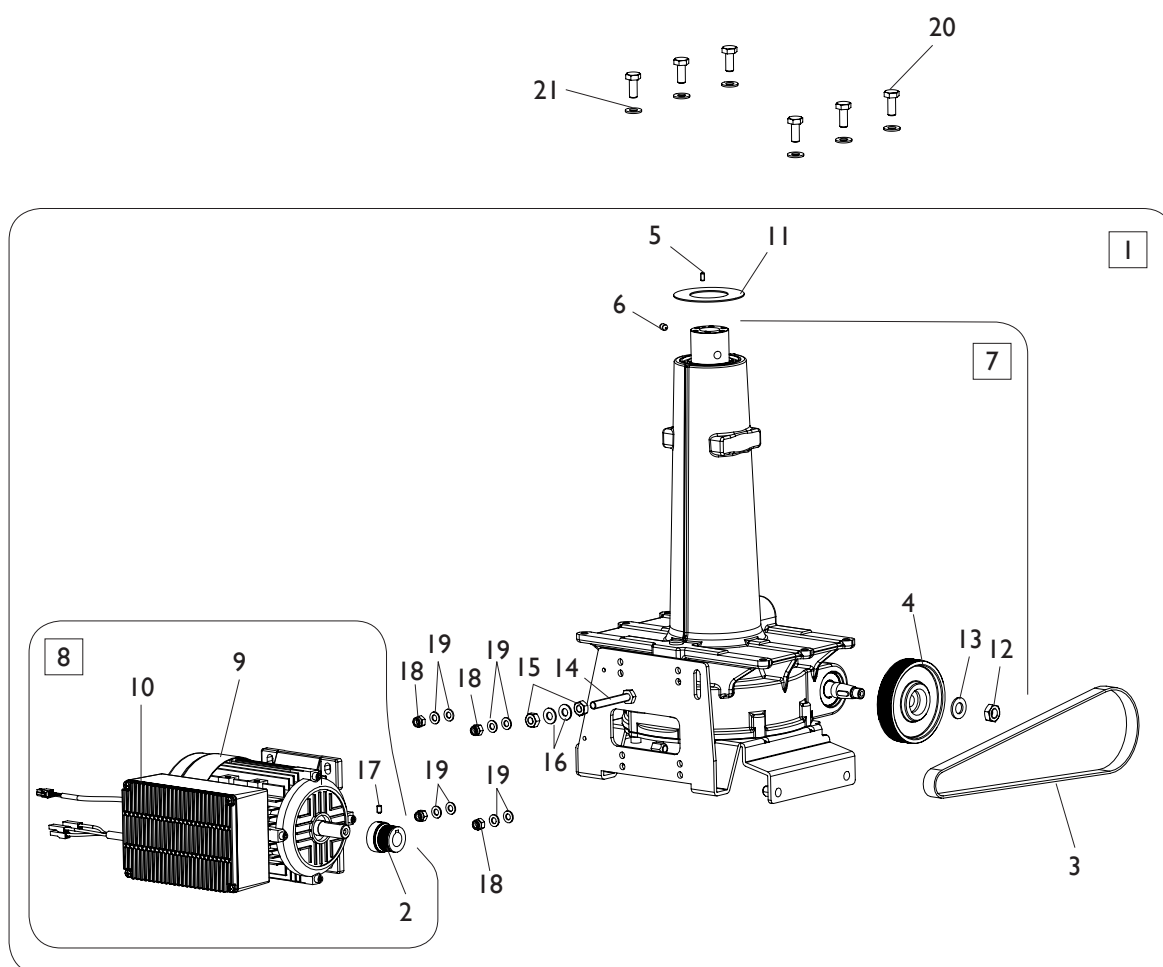
GRUPPO CONSOLLE COMANDI COMMAND CONSOLE GROUP



[TORNA AL COMPLESSIVO](#)
[RETURNS TO OVERALL](#)

| Rif. Ref. | Codice Code | Descrizione | Description |
|--------------|----------------|--------------------------------|---------------------------------|
| 1 | 4-122536 | TUBO CONSOLLE | CONSOLLE PROTECTION |
| 2 | 4-122537 | ADESIVO CONSOLLE | CONSOLLE LABEL |
| 3 | 5-102653 | COMANDO STALLONATORE INFERIORE | COMMAND LOWER BEAD ASSEMBLY |
| 4 | 5-102654 | COMANDO STALLONATORE SUPERIORE | COMMAND UPPER BEAD ASSEMBLY |
| 5 | 5-103033 | COMANDO UNGHIA UTENSILE | COMMAND TOOL ASSEMBLY |
| 6 | 5-103034 | COMANDO TRASLAZIONE BRACCIO | COMMAND ARM ASSEMBLY |
| 7 | 5-102655 | VALVOLA COMANDO STALL. CPL. | BEAD COMMAND VALVE ASSEMBLY |
| 8 | 3-00049 | RACCPN-LO-G1/8G-T8 | LO-FITTING-G1/8G-T8 |
| 9 | 3-00053 | RACCPN-LO-G1/8-T6 | LO-FITTING G1/8-T6 |
| 10 | 3-00181 | SILENZIATORE IN ACCIAIO 1/8 | SILENCER 1/8 |
| 11 | 3-01642 | VALVOLA | VALVE |
| 12 | 444227 | VALVOLA | VALVE |
| 13 | 261836 | COMANDO RICERCA UTENSILE | TOOL COMMAND |
| 14 | 433675 | SILENZIATORE G1/8 | SILENCER G1/8 |
| 15 | 5-103045 | GRUPPO DISTRIBUZIONE | VALVE ASSEMBLY |
| 16 | 3-00464 | RACCPN-D-G1/8G-T8 | D-FITTING-G1/8G-T8 |
| 17 | 3-00461 | RACCPN-D-G1/8G-T6 | D-FITTING-G1/8G-T6 |
| 18 | 3-03058 | BLOCCETTO RIPARTITORE | BLOCK |
| 19 | 437642 | TAPPO G1/4 | CAP G1/4 |
| 20 | 3-00459 | RACCPN-D-G1/4G-T8 | D-FITTING-G1/4G-T8 |
| 21 | 2-91668 | VTCEI M4X30 | HEXAGON SOCKET HEAD SCREW M4X30 |
| 22 | 3-01646 | VALVOLA | VALVE |
| 23 | 2-00209 | RONDELLA D.4 | WASHER D.4 |
| 24 | 2-01018 | DADO ES.A. M4 | AUTOLOCKING HEXAGON NUT M4 |
| 25 | 5-122223 | CARTER CONSOLLE CON ADESIVO | CONSOLLE CARTER WITH LABEL |
| 26 | 2-00320 | VTCEI M8X20 | HEXAGON SOCKET HEAD SCREW M8X20 |
| 27 | 2-02007 | VTCEI M8X20 | HEXAGON SOCKET HEAD SCREW M8X20 |
| 28 | 4-122549 | COVER CONSOLLE | CONSOLLE COVER |
| 29 | 3-00025 | RACCPN-T-T8 | T-FITTING-T8 |
| 30 | 3-00102 | RACCPN-MANICOTTO-G1/8F | RACCPN-G1/8F |
| 31 | 3-00290 | RACCPN-TO-G1/8CG-T6 | TO-FITTING- |
| 32 | 3-02090 | RACCPN-D-T6-4-T4 | D-FITTING-T6-4-T4 |
| 33 | 3-01179 | RACCPN-D-T6/C4 | D-FITTING-T6/C4 |
| 34 | 3-01174 | RACCPN-D-T4-T6 | D-FITTING-T4-T6 |
| 35 | 3-02319 | RACCPN-TAPPO-T4 | FITTING-T4 |
| 36 | 2-02174 | VTBEI M6X16 | SCREW M6X16 |
| 37 | 2-03203 | RONDELLA D.8,4X17X1,6 | WASHER D.8,4X17X1,6 |
| 38 | 3-00048 | RACCPN-Y-T8 | Y-FITTING-T8 |
| 39 | 261835 | COM. SMONTAGGIO/ARRETRAMENTO | DEMOUNTING COMMAND |
| 40 | 461842 | PULSANTE | BUTTON |
| 41 | 461844 | VALVOLA | VALVE |
| 42 | 461843 | CONTATTO | CONTACT |
| 43 | 3-01647 | VALVOLA | VALVE |
| 44 | 4-100013 | SELETTORE A LEVA | SWITCH |
| 45 | 301289 | RONDELLA D.17,25X24X0,3 | WASHER D.17,25X24X0,3 |
| 46 | 3-10155 | RACCPN-TL-T4 (DA 04-2018) | TL-FITTING-T4 (SINCE 04-2018) |

GRUPPO RIDUTTORE CON MOTORE GROUP GEARBOX WITH MOTOR

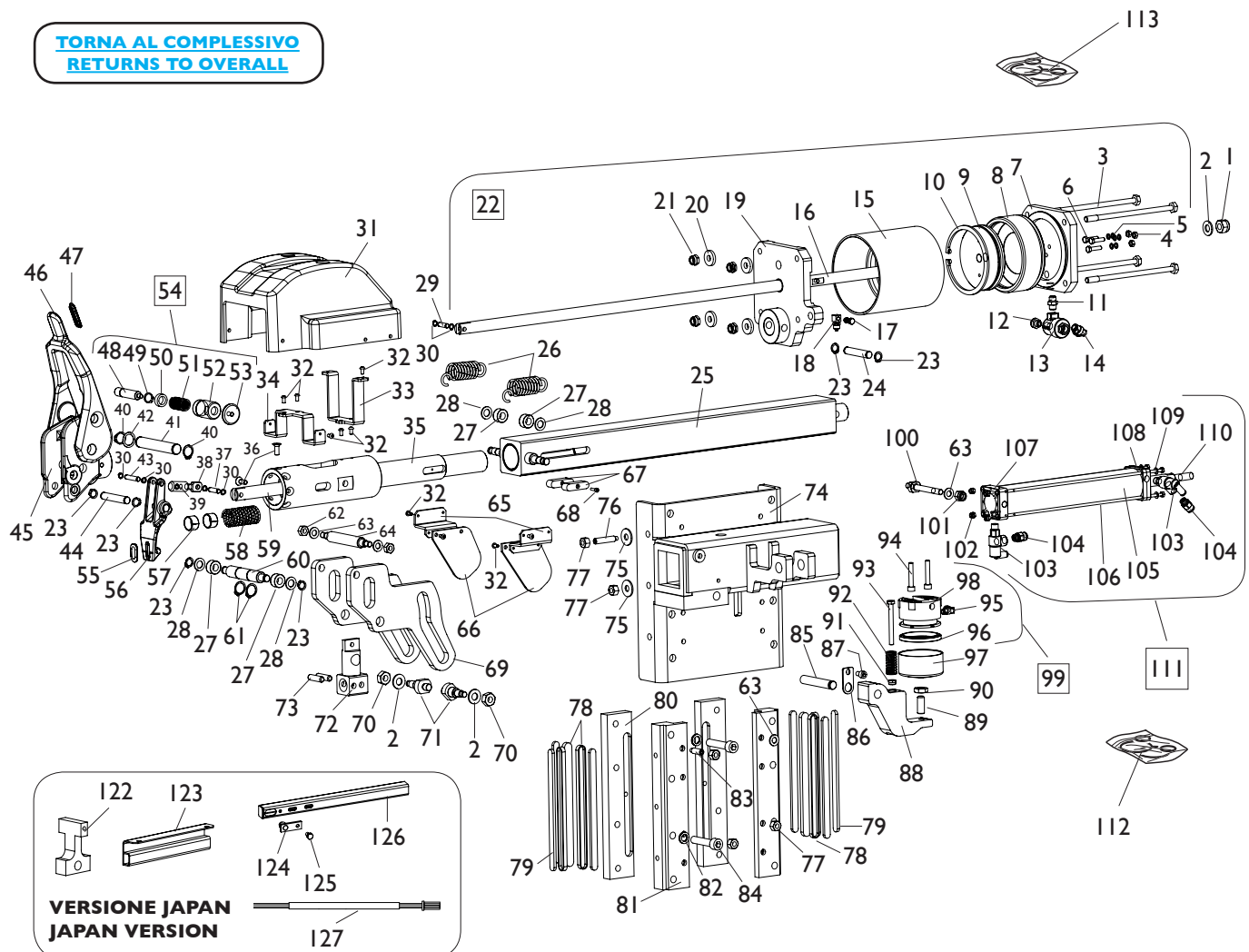


[TORNA AL COMPLESSIVO](#)
[RETURNS TO OVERALL](#)

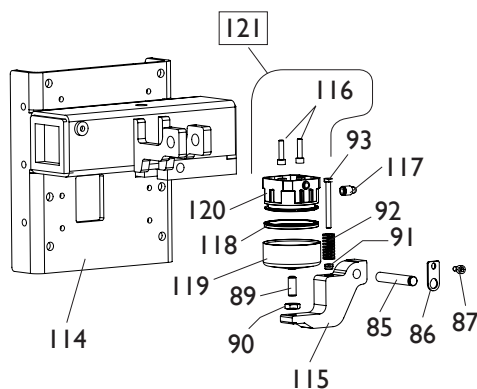
| Rif. Ref. | Codice Code | Descrizione | Description |
|--------------|----------------|--|--|
| 1 | 5-104041 | RIDUTTORE CON MOTORE 230V | GEARBOX WITH MOTOR 230V |
| 1 | 5-104042 | RIDUTTORE CON MOTORE 115V | GEARBOX WITH MOTOR 115V |
| 2 | 4-104329 | PULEGGIA MOTORE 50/60HZ | MOTOR PULLEY 50/60HZ |
| 3 | 3-01649 | CINGHIA 50/60HZ | BELT 50/60HZ |
| 4 | 354082 | PULEGGIA RIDUTTORE | GEARBOX PULLEY |
| 5 | 2-00850 | VSTEI M5X10 | SCREW M5X10 |
| 6 | 2-71364 | VSTEI M8X12 | SCREW M8X12 |
| 7 | 5-105535 | RIDUTTORE CPL. 115/230V (NO MOTORE) | GEARBOX ASSEMBLY 115/230V (NO MOTOR) |
| 8 | 5-104966 | MOTOINV. + CAVI 230V/1/50-60HZ | MOTOR WITH CABLE 230V/1/50-60HZ |
| 8 | 5-103599 | MOTOINV. + CAVI 115V/1/60HZ | MOTOR WITH CABLE 115V/1/60HZ |
| 9 | 4-113412 | MOTOINV. 115-230V (NO SCHEDA) | MOTOR 115-230V (NO P.C. BOARD) |
| 10 | 4-115395 | SCHEDA INVERTER+ FILTRO 230V 190HZ | INVERTER PC.BOARD + FILTER 230V 190HZ |
| 10 | 4-111585 | SCHEDA INVERTER 115V 190HZ | INVERTER PC.BOARD 115V 190HZ |
| 11 | 4-100767 | COPERTURA AUTOCENTRANTE | TURNTABLE COVER |
| 12 | 2-00941 | DADO ES. M14 | HEXAGON NUT M14 |
| 13 | 2-00215 | RONDELLA D.14 | WASHER D.14 |
| 14 | 2-00384 | VTE M10X70 | HEXAGON HEAD SCREW M10X70 |
| 15 | 2-91726 | DADO ES. M10 | HEXAGON NUT M10 |
| 16 | 2-00213 | RONDELLA D.10 | WASHER D.10 |
| 17 | 2-00544 | VSTEI M6X10 | SCREW M6X10 |
| 18 | 2-01020 | DADO ES.A. M8 | AUTOLOCKING HEX. NUT M8 |
| 19 | 2-01299 | RONDELLA D.9X24X2 | WASHER D.9X24X2 |
| 20 | 2-00380 | VTE M10X25 | HEXAGON HEAD SCREW M10X25 |
| 21 | 2-02494 | RONDELLA D.10 | WASHER D.10 |

GRUPPO UTENSILE TOOL GROUP

**TORNA AL COMPLESSIVO
RETURNS TO OVERALL**



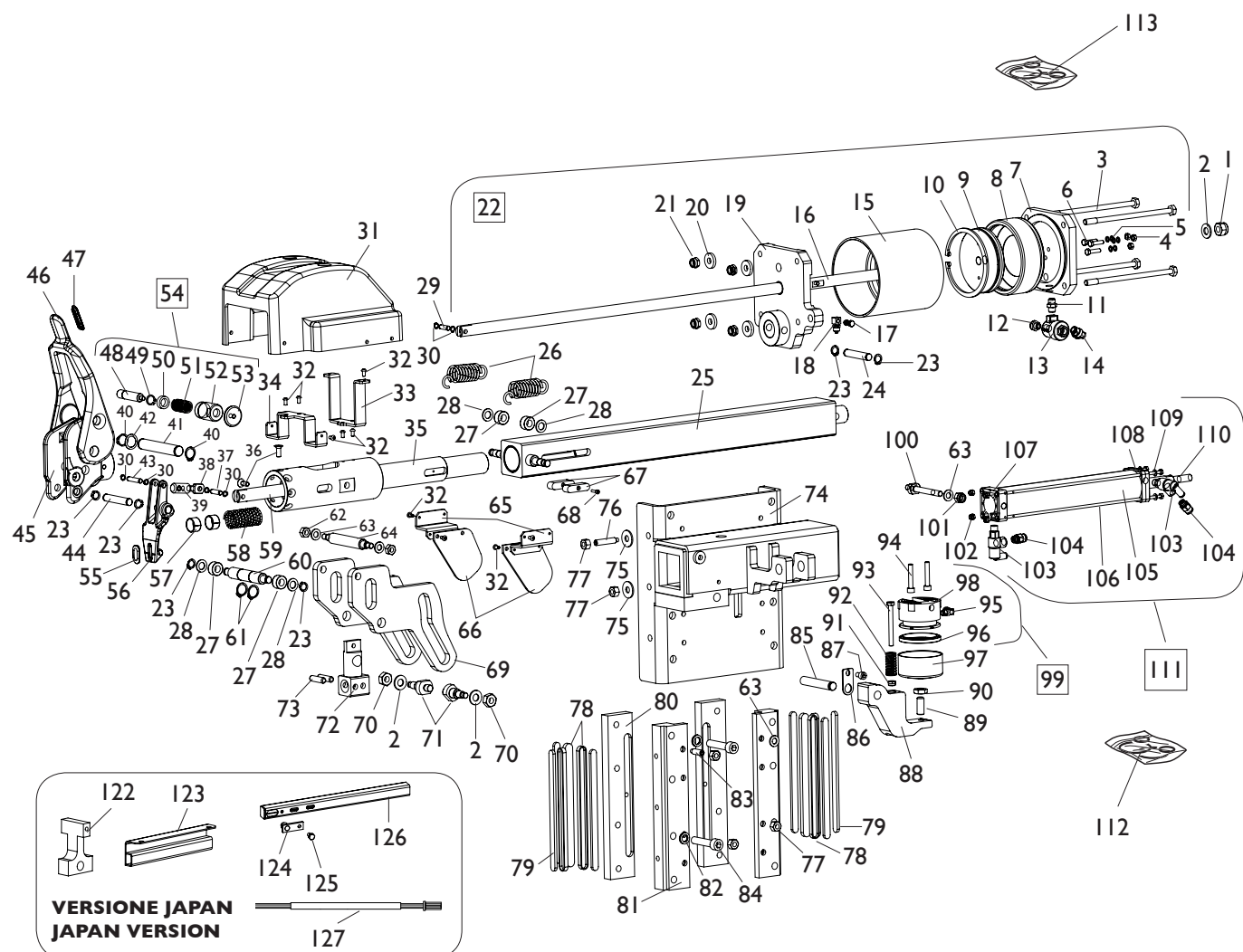
**IN PRODUZIONE DA 04-2018
PRODUCT SINCE 04-2018**



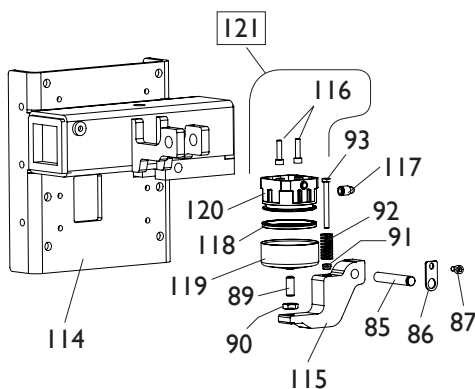
| Ref. | Code | Descrizione | Description |
|------|----------|--------------------------|-----------------------------|
| 1 | 2-01019 | DADO ES.A. M10 | AUTOLOCKING HEXAGON NUT M10 |
| 2 | 2-00213 | RONDELLA D.10 | WASHER D.10 |
| 3 | 4-106257 | TIRANTE M8X55 | TIE-ROD M8X55 |
| 4 | 2-00144 | DADO ES. M5 | HEXAGON NUT M5 |
| 5 | 3-00452 | RONDELLA IN NYLON D.5 | NYLON WASHER D.5 |
| 6 | 2-00356 | VTE M5X20 | HEXAGON HEAD SCREW M5X20 |
| 7 | 361493 | FLANGIA POSTERIORE D.110 | REAR FLANGE D.110 |

| Ref. | Code | Descrizione | Description |
|------|----------|------------------------------------|---------------------------------|
| 8 | 361494 | PISTONE FLOTTANTE D.110X38 | PISTON D.110X38 |
| 9 | 361495 | PISTONE D.95X12 | PISTON D.95X12 |
| 10 | 2-03067 | ANELLO ELASTICO D.95 | ELASTIC WASHER D.95 |
| 11 | 3-00143 | RACCPN-NIPPLO-G1/8C | NIPPLO-FITTING-G1/8C |
| 12 | 3-00181 | SILENZIATORE IN ACCIAIO 1/8 | SILENCER 1/8 |
| 13 | 3-02403 | VALVOLA DI SCARICO 1/8G | VALVE 1/8G |
| 14 | 3-00053 | RACCPN-LO-G1/8-T6 | LO-FITTING-G1/8-T6 |
| 15 | 4-122473 | CAMICIA D.110X115 | LINER D.110X115 |
| 16 | 4-122472 | STELO D.16X778,3 | STEM D.16X778,3 |
| 17 | 3-00072 | VITE FORATA M5 | SCREW M5 |
| 18 | 3-00079 | RACCPN-ANELLO-M5-T6/4 | FITTING-M5-T6/4 |
| 19 | 5-122217 | FLANGIA ATERIORE D.110 | FRONT FLANGE D.110 |
| 20 | 339208 | RONDELLA D.8,5X22X4 | WASHER D.8,5X22X4 |
| 21 | 2-01137 | DADO ES.A. M8 | AUTOLOCKING HEXAGON NUT M8 |
| 22 | 5-107955 | CILINDRO D.110 SCS-LIGHT | TOOL CYLINDER D.110 |
| 23 | 2-00023 | SEEGER D.10 | SEEGER D.10 |
| 24 | 4-122388 | PERNO D.10 L.55mm | PIN D.10 L.55mm |
| 25 | 5-122218 | QUADRO 50X50 | BAR 50X50 |
| 26 | 4-122382 | MOLLA D.22X14X74 | SPRING D.22X14X74 |
| 27 | 2-03061 | ROTELLA RULLI | ROLLER |
| 28 | 354588 | RONDELLA D.10,5X18X1,5 | WASHER D.10,5X18X1,5 |
| 29 | 361486 | PERNO D.6X19,5 | PIN D.6X19,5 |
| 30 | 2-00020 | ANELLO D.6 | SEEGER D.6 |
| 31 | 4-122375 | PROTEZIONE | COVER |
| 32 | 2-80009 | VTBEI M4X8 | SCREW M4X8 |
| 33 | 4-122419 | PIASTRA SUPPORTO CENTRALE | PLATE |
| 34 | 4-122418 | PIASTRA SUPPORTO LATERALE | PLATE |
| 35 | 4-122399 | SUPPORTO TELESCOPICO | SUPPORT |
| 36 | 2-00711 | VTSPFI M6X16 | SCREW M6X16 |
| 37 | 4-122416 | PERNO BIELLA D.6X22 | PIN D.6X22 |
| 38 | 361485 | PERNO M8X37 | PIN M8X37 |
| 39 | 361484 | REGISTRO | PIN |
| 40 | 2-01122 | ANELLO ELASTICO D.15 | ELASTIC WASHER D.15 |
| 41 | 4-122414 | PERNO FULCRO D.15X90 | FULCRUM PIN D.15X90 |
| 42 | 4-104696 | RONDELLA D.16X22X0,2 | WASHER D.16X22X0,2 |
| 43 | 361487 | PERNO D.6X30 | PIN D.6X30 |
| 44 | 4-122413 | PERNO D.10X58 | PIN D.10X58 |
| 45 | 4-122424 | SUPPORTO UNGHIE | TOOLS SUPPORT |
| 46 | 4-122422 | UNGHIA DI MONTAGGIO | TOOL |
| 47 | 4-107970 | PROTEZIONE UTENSILE | INSERT |
| 48 | 4-122434 | PERNO D.12X63,5 | PIN D.12X63,5 |
| 49 | 2-00025 | ANELLO ELASTICO D.12 | ELASTIC WASHER D.12 |
| 50 | 4-122435 | RONDELLA SPECIALE D.12X18X6 | SPECIAL WASHER D.12X18X6 |
| 51 | 4-122430 | MOLLA D.15,5X1,5X32 | SPRING D.15,5X1,5X32 |
| 52 | 4-122432 | SUPPORTO CHIAVISTELLO | SUPPORT |
| 53 | 4-109834 | POMOLO | KNOB |
| 54 | 5-122219 | CHIAVISTELLO UTENSILE | PIN ASSEMBLY |
| 55 | 461489 | PROTEZIONE TESTINA | INSERT |
| 56 | 361403 | UTENSILE | TOOL |
| 57 | 3-03048 | BOCCOLA D.18X20X12 | BUSH D.18X20X12 |
| 58 | 4-122427 | MOLLA D.25,75X2,5X100 | SPRING D.25,75X2,5X100 |
| 59 | 4-122409 | PERNO D.18X165 | PIN D.18X165 |
| 60 | 4-122405 | PERNO D.16X104 | PIN D.16X104 |
| 61 | 2-01130 | ANELLO ELASTICO D.16 | ELASTIC WASHER D.16 |
| 62 | 2-00151 | DADO ES. M8 | HEXAGON NUT M8 |
| 63 | 2-00212 | RONDELLA D.8 | WASHER D.8 |
| 64 | 4-122394 | PERNO D.15X115 | PIN D.15X115 |
| 65 | 4-122376 | SUPPORTO LATERALE | SUPPORT |
| 66 | 4-122377 | PROTEZIONE IN GOMMA | RUBBER COVER |
| 67 | 4-122389 | LINGUETTA SPECIALE IN BRONZO 12X40 | BRONZE PLUG 12X40 |
| 68 | 2-00922 | VTCEI M3X12 | HEXAGON SOCKET HEAD SCREW M3X12 |
| 69 | 4-122395 | PIASTRA CAMMA ROTAZIONE | PLATE |

GRUPPO UTENSILE TOOL GROUP



**IN PRODUZIONE DA 04-2018
PRODUCT SINCE 04-2018**

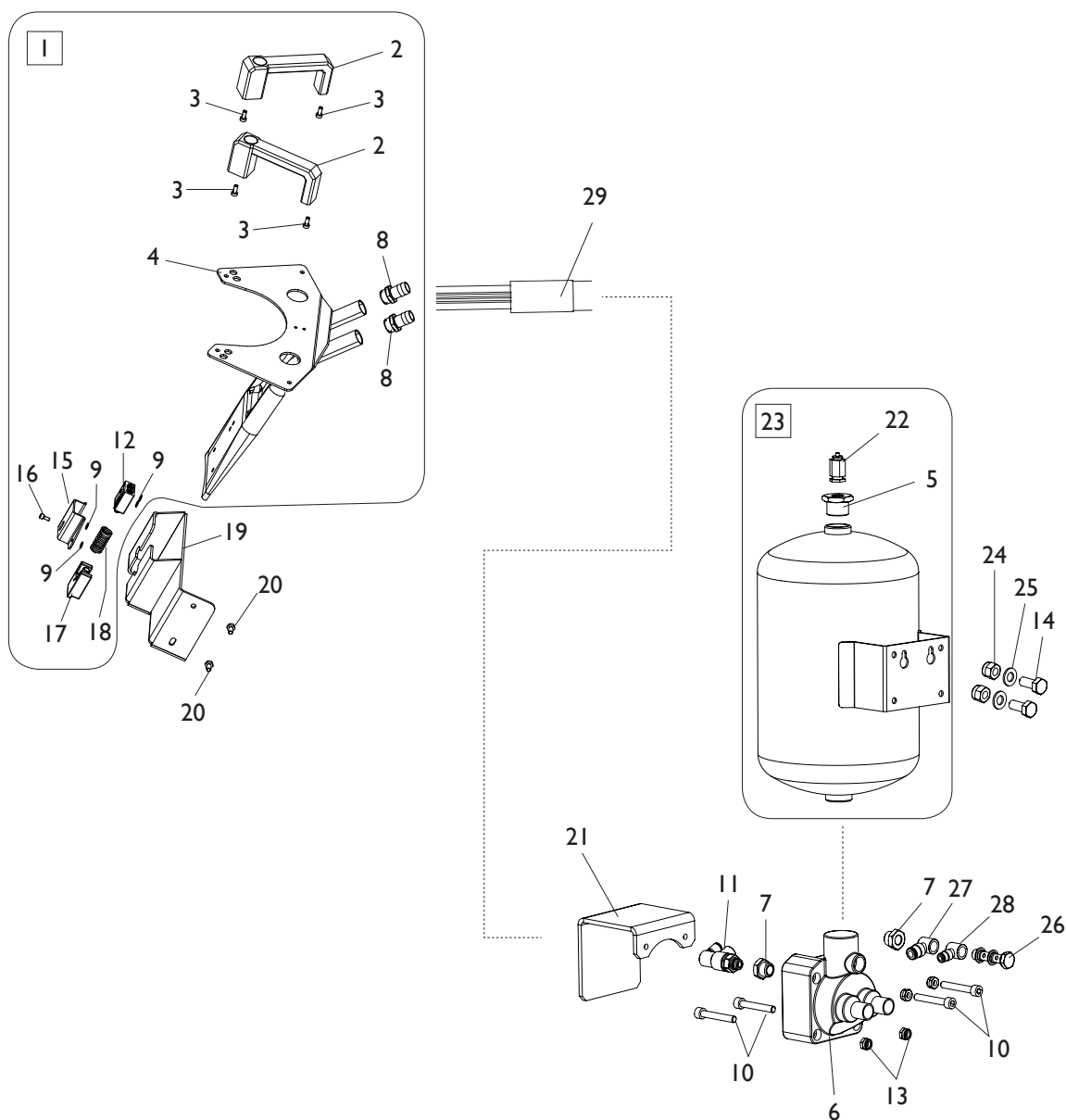


**[TORNA AL COMPLESSIVO](#)
[RETURNS TO OVERALL](#)**

| Ref. | Code | Descrizione | Description |
|------|----------|------------------------------------|----------------------------------|
| 70 | 2-01275 | DADO ES. M10 | HEXAGON NUT M10 |
| 71 | 4-122404 | PERNO M10X50 | PIN M10X50 |
| 72 | 4-122398 | SCORREVOLE TRAINANTE | SLIDER |
| 73 | 2-71580 | SPINA D.8X30 | PIN D.8X30 |
| 74 | 4-122365 | CARRELLO | CARRIAGE |
| 75 | 2-01299 | RONDELLA D.9X24X2 | WASHER D.9X24X2 |
| 76 | 2-01835 | VSTEI M8X40 | SCREW M8X40 |
| 77 | 2-00112 | DADO ES. M8 | HEXAGON NUT M8 |
| 78 | 4-105615 | PATTINO | SLIDER |
| 79 | 4-105614 | LAMINA RIPRESA GIOCO | SHEET |
| 80 | 4-122373 | SUPPORTO PATTINO ESTERNO | SLIDER SUPPORT |
| 81 | 4-122374 | SUPPORTO PATTINO INTERNO | SLIDER SUPPORT |
| 82 | 3-00699 | RONDELLA NORD-LOCK D.10,7X16,6X2,5 | NORD-LOCK WASHER D.10,7X16,6X2,5 |
| 83 | 2-01322 | VSTEI M8X25 | SCREW M8X25 |
| 84 | 2-00334 | VTCEI M10X50 | HEXAGON SOCKET HEAD SCREW M10X50 |
| 85 | 4-108173 | PERNO L.75 | PIN L.75 |
| 86 | 4-108665 | PIASTRINO | PLATE |
| 87 | 2-01989 | VTCEI M6X10 | HEXAGON SOCKET HEAD SCREW M6X10 |
| 88 | 4-108218 | LEVA DI BLOCCAGGIO | LEVER |
| 89 | 2-01291 | VSTEI M10X25 | SCREW M10X25 |
| 90 | 2-00157 | DADO ES. M10 | HEXAGON NUT M10 |
| 91 | 2-01979 | DADO ES. A M6 | AUTOLOCKING HEXAGON NUT M6 |
| 92 | 431257 | MOLLA D.8X16X32 | SPRING D.8X16X32 |
| 93 | 2-00369 | VTE M6X60 | HEXAGON HEAD SCREW M6X60 |
| 94 | 2-00909 | VTCEI M6X35 | HEXAGON SOCKET HEAD SCREW M6X35 |
| 95 | 3-00220 | RACCPN-L-G1/8C-T4 | L-FITTING-G1/8C-T4 |
| 96 | 443078 | GUARNIZIONE D.60,33X47,63X6,35 | SEAL D.60,33X47,63X6,35 |
| 97 | 326537 | CILINDRO D.60 | CYLINDER D.60 |
| 98 | 443077 | PISTONE D.60X38 | PISTON D.60X38 |
| 99 | 5-101581 | PISTONE DI BLOCCAGGIO | PISTON ASSEMBLY |
| 100 | 4-122369 | PERNO M8X79,6 | PIN M8X79,6 |
| 101 | 2-01020 | DADO ES. A. M8 | AUTOLOCKING HEXAGON NUT M8 |
| 102 | 2-01018 | DADO ES. A. M4 | AUTOLOCKING HEXAGON NUT M4 |
| 103 | 3-03006 | VALVOLA 1/8 | VALVE 1/8 |
| 104 | 3-00461 | RACCPN-D-G1/8G-T6 | D-FITTING-G1/8G-T6 |
| 105 | 4-122528 | CAMICIA D.40X243 | LINER D.40X243 |
| 106 | 4-122529 | TIRANTE D.4X280 | TIE-ROD D.4X280 |
| 107 | 4-108322 | FLANGIA POSTERIORE D.40 | REAR FLANGE D.40 |
| 108 | 4-108323 | FLANGIA ANTERIORE D.40 | FRONT FLANGE D.40 |
| 109 | 2-00209 | RONDELLA D.4 | WASHER D.4 |
| 110 | 4-122527 | STELO D.15X300 | STEM D.15X300 |
| 111 | 5-107981 | CILINDRO TRASLAZIONE ORIZZ. D.40 | CYLINDER ASSEMBLY D.40 |
| 112 | 5-103267 | KIT GUARNIZIONI CILINDRO D.40 | SEALS KIT FOR CYLINDER D.40 |
| 113 | 262525 | KIT GUARNIZIONI CILINDRO D.110 | SEALS KIT FOR CYLINDER D.110 |
| 114 | 4-135360 | CARRELLO | CARRIAGE |
| 115 | 4-135366 | LEVA DI BLOCCAGGIO | LEVER |
| 116 | 2-02808 | VTCEI M6X25 | HEXAGON SOCKET HEAD SCREW M6X25 |
| 117 | 3-00149 | RACCPN-L-C6-T6 | L-FITTING-C6-T6 |
| 118 | 3-02060 | GUARNIZIONE D.70X60X5 | SEAL D.70X60X5 |
| 119 | 4-404498 | CILINDRO D.70X34 | CYLINDER D.70X34 |
| 120 | 4-404781 | PISTONE CON CARTUCCIA D.70X41 | PISTON D.70X41 |
| 121 | 5-491113 | CILINDRO D.70 CPL. | CYLINDER D.70 ASSEMBLY |
| 122 | 4-140040 | SUPPORTO LASER | LASER SUPPORT |
| 123 | 4-140034 | SUPPORTO CANALINA | SUPPORT |
| 124 | 5-491015 | LASER | LASER |
| 125 | 2-91714 | VTE M6X10 | HEXAGON HEAD SCREW M6X10 |
| 126 | 4-140036 | STAFFA PORTA LASER | LASER BRACKET |
| 127 | 4-404569 | CAVO LASER L.4000mm | LASER CABLE L.4000mm |

GRUPPO T.I. SYSTEM

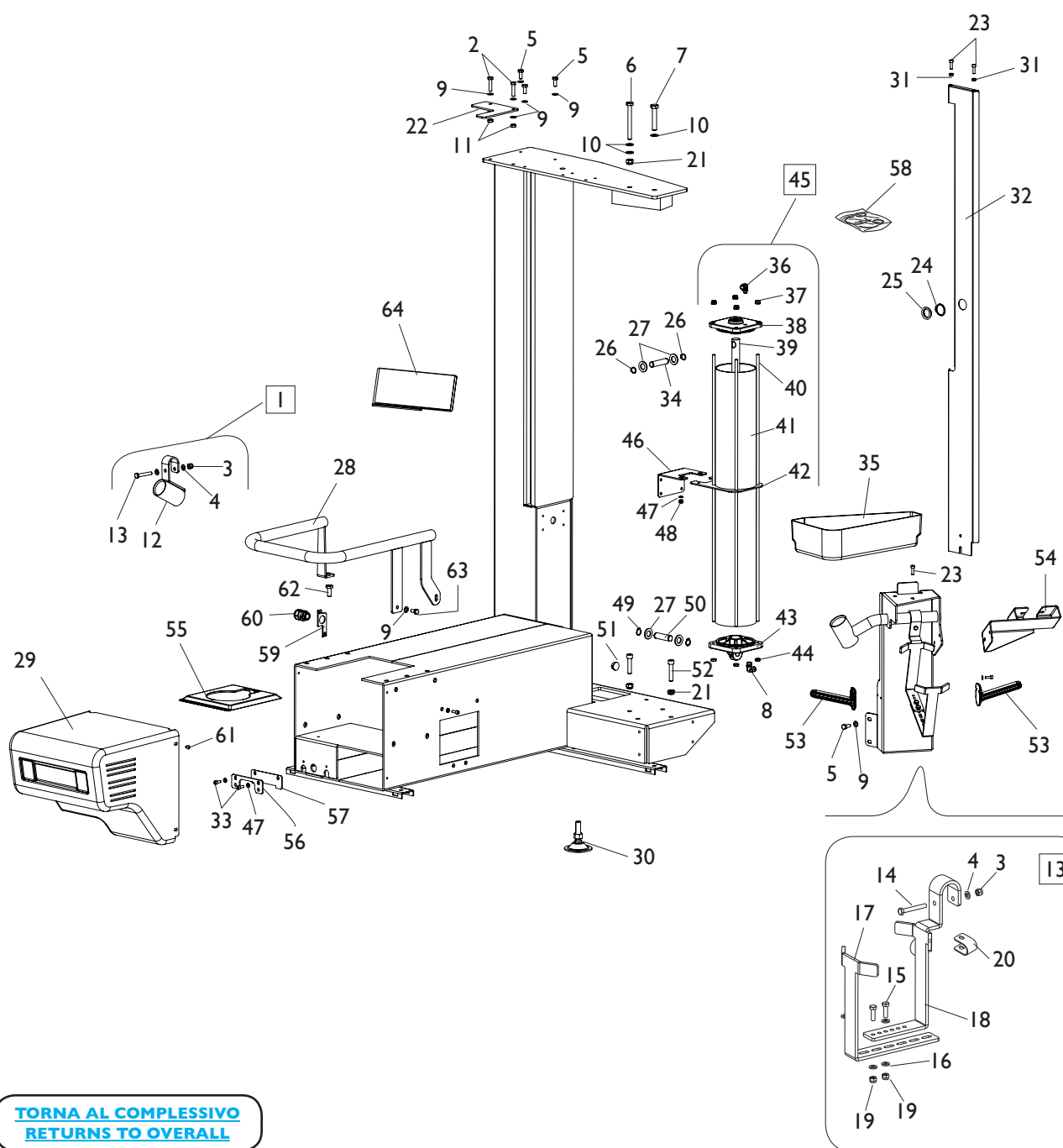
T.I. SYSTEM GROUP



[TORNA AL COMPLESSIVO](#)
[RETURNS TO OVERALL](#)

| Rif. Ref. | Codice Code | Descrizione | Description |
|--------------|----------------|----------------------------|-----------------------------------|
| 1 | 5-401574 | UGELLO BLAST COMPLETO | NOZZLE ASSEMBLY |
| 2 | 3-90014 | MICROVALVOLA A MANIGLIA | HANDEL WITH VALVE |
| 3 | 2-03106 | VTCEI B. M5X12 | LOW HEX. SOCKET HEAD SCREW M5X12 |
| 4 | 4-404655 | UGELLO BLAST | NOZZLE |
| 5 | 442239 | RIDUZIONE M/F 3/8 | FITTING M/F 3/8 |
| 6 | 243203 | VALVOLA DI SPARO | VALVE FIRING |
| 7 | 3-00269 | RACCPN-RIDUZIONE-G1/4-1/8F | FITTING-G1/4-1/8F |
| 8 | 3-00008 | RACCPN-RESCA-G1/2-T17 | RESCA-FITTING-G1/2-T17 |
| 9 | 2-00209 | RONDELLA D.4 | WASHER D.4 |
| 10 | 2-94006 | VTCEI 1/2 M6X40 | CIRCULAR SOCKET HEAD SCREW M6X40 |
| 11 | 3-01175 | VALVOLA | VALVE |
| 12 | 3-90108 | VALVOLA | VALVE |
| 13 | 2-01979 | DADO ES.A. M6 | AUTOLOCKING HEX. NUT M6 |
| 14 | 2-02047 | VTE M8X20 | HEXAGON SOCKET HEAD SCREW M8X20 |
| 15 | 4-405537 | ASTUCCIO | COVER |
| 16 | 2-02080 | VTCEI M4X10 | HEXAGON SOCKET HEAD SCREW M4X10 |
| 17 | 4-405538 | CURSORE | GUIDE |
| 18 | 3015546 | MOLLA D.17X2X36 | SPRING D.17X2X36 |
| 19 | 4-405585 | SUPPORTO BLAST | SUPPORT |
| 20 | 2-91767 | VTE M6X12 | HEXAGON HEAD SCREW M6X12 |
| 21 | 3020962 | STAFFA PROTEZIONE VALVOLA | VALVE BRACKET |
| 22 | 3-00356 | VALVOLA CE | VALVE CE |
| 23 | 262215 | SERBATOIO CE | TANK CE |
| 24 | 2-01020 | DADO ES.N.A. M8 | NORMAL AUTOLOCKING HEXAGON NUT M8 |
| 25 | 2-00212 | RONDELLA D.8 | WASHER D.8 |
| 26 | 3-00075 | VITE FORATA DOPPIA G1/8 | SCREW TWO HOLES G1/8 |
| 27 | 3-00515 | RACCPN-ANELLO-G1/8-T6 | FITTING-G1/8-T6 |
| 28 | 3-00514 | RACCPN-ANELLO-G1/8-T4 | FITTING-G1/8-T4 |
| 29 | 5-491045 | TUBO GONFIAGGIO COMPLETO | INFLATION HOSE ASSEMBLY |

GRUPPO COVER COVER GROUP

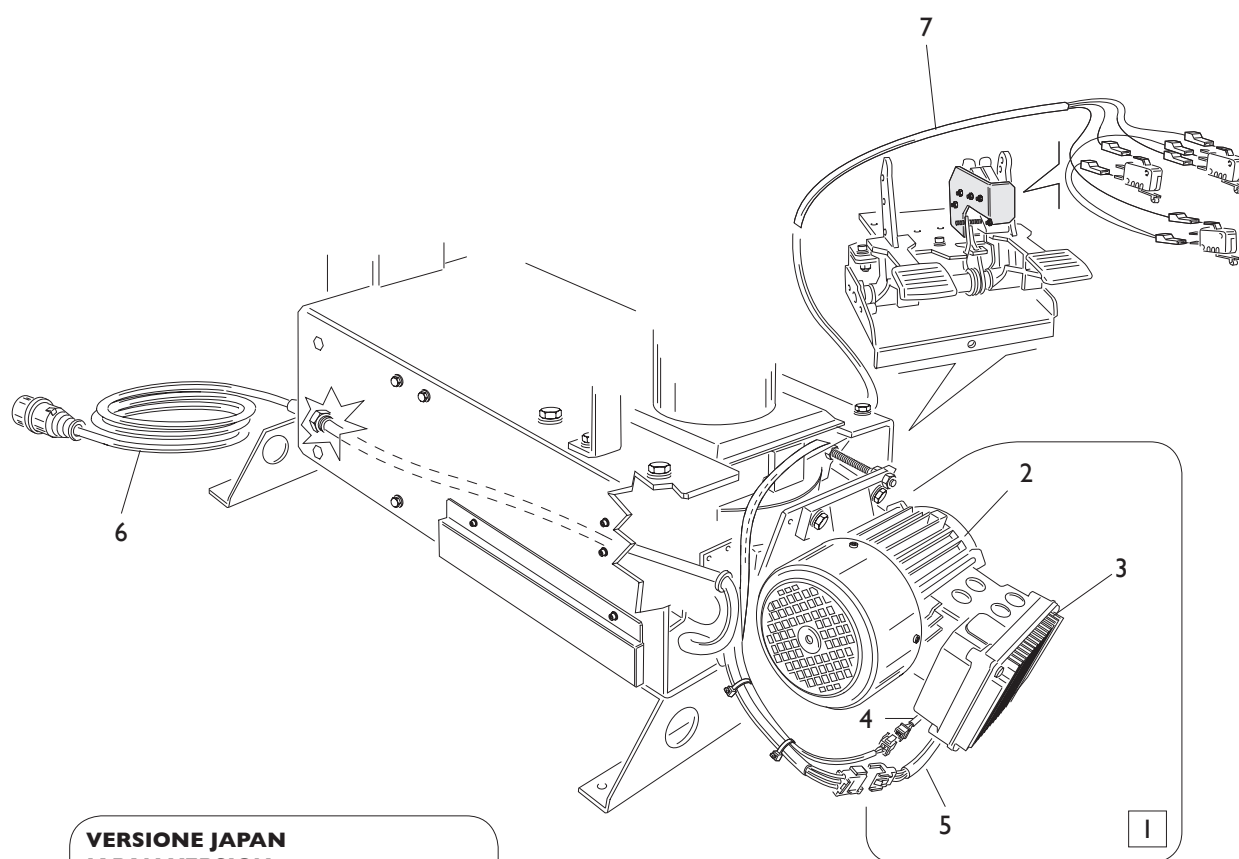


[TORNA AL COMPLESSIVO](#)
[RETURNS TO OVERALL](#)

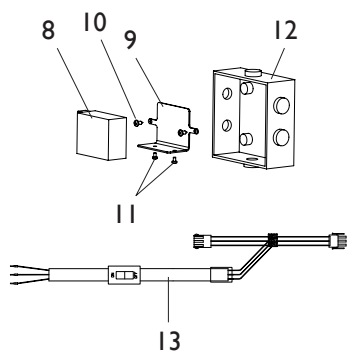
| Ref. | Code | Descrizione | Description |
|------|----------|-------------------------|---------------------------------|
| 1 | 5-101965 | ATTACCO MANIGLIA | HANDLE SUPPORT |
| 2 | 2-00795 | VTE M8X35 | HEXAGON HEAD SCREW M8X35 |
| 3 | 2-01020 | DADO ES.A. M8 | AUTOLOCKING HEXAGON NUT M8 |
| 4 | 2-00212 | RONDELLA D.8,4X16X1,6 | WASHER D.8,4X16X1,6 |
| 5 | 2-00373 | VTE M8X20 | HEXAGON HEAD SCREW M8X20 |
| 6 | 2-71400 | VTE 1/2F M10X100 | HEXAGON HEAD SCREW 1/2F M10X100 |
| 7 | 2-02596 | VTE 1/2F M12X65 | HEXAGON HEAD SCREW 1/2F M12X65 |
| 8 | 3-00055 | RACCPN-LO-G 1/4-M/T-T8 | LO-FITTING-G 1/4-M/T-T8 |
| 9 | 2-00212 | RONDELLA D.8 | WASHER D.8 |
| 10 | 2-02494 | RONDELLA D.10 | WASHER D.10 |
| 11 | 2-00151 | DADO ES. M8 | HEXAGON NUT M8 |
| 12 | 4-105803 | STAFFA ATTACCO MANIGLIA | HANDLE SUPPORT |

| Ref. | Code | Descrizione | Description |
|------|-------------|---------------------------------|----------------------------------|
| 13 | 5-101236 | PORTAGRASSO UNIVERSALE | GREASER SUPPORT |
| 14 | 2-02802 | VTE 1/2F M8X50 | HEXAGON HEAD SCREW M8X50 |
| 15 | 2-02339 | VTE M6X20 | HEXAGON HEAD SCREW M6X20 |
| 16 | 2-00211 | RONDELLA D.6 | WASHER D.6 |
| 17 | 4-103832 | LAMIERA FERMO | BRACKET |
| 18 | 4-103831 | GANCIO FISS. CONTENITORE GRASSO | GREASER HOLDER |
| 19 | 2-01257 | DADO ES.A. M6 | AUTOLOCKING HEAXAGON NUT M6 |
| 20 | 4-102642 | ADATTATORE PORTAGRASSO | GREASER SUPPORT ADAPTOR |
| 21 | 2-01019 | DADO ES.A. M10 | AUTOLOCKING HEXAGON NUT M10 |
| 22 | 4-122532 | STAFFA FERMO PREMITALLONE | BEAD PRESSER BRACKET |
| 23 | 2-00310 | VTCEI M6X20 | HEXAGON SOCKET HEAD SCREW M6X20 |
| 24 | 2-00034 | SEEGER D.30 | SEEGER D.30 |
| 25 | 4-108996 | BOCCOLA D.25X35X8 | BUSH D.25X35X8 |
| 26 | 2-01122 | SEEGER D.15 | SEEGER D.15 |
| 27 | 2-01045 | RONDELLA D.16 | WASHER D.16 |
| 28 | 4-105965 | TUBO MULTIFUNZIONE | PROTECTION |
| 29 | 5-122215 | PROTEZIONE FRONTALE CON ADESIVI | FRONT COVER WITH LABELS |
| 30 | 215022 | PIEDE | FOOT |
| 31 | 2-00150 | DADO ES. M6 | HEXAGON NUT M6 |
| 32 | 5-122224 | PROTEZIONE VERTICALE | COVER |
| 33 | 2-00309 | VTCEI M6X16 | HEXAGON SOCKET HEAD SCREW M6X16 |
| 34 | 4-122507 | PERNO D.15 L.64mm | PIN D.15 L.64mm |
| 35 | 4-108333 | VASCHETTA PORTA OGGETTI | CASING |
| 36 | 3-00059 | RACCPN-LO-GI/8C-T8 | LO-FITTING-GI/8C-T8 |
| 37 | 2-01137 | DADO ES.A. M8 | AUTOLOCKING HEXAGON NUT M8 |
| 38 | 5-107559 | FLANGIA ANTERIORE D.110 | FRONT FLANGE D.110 |
| 39 | 4-122545 | STELO D.22X798 | STEM D.22X798 |
| 40 | 4-122546 | TIRANTE D.8X778 | TIE-ROD D.8X778 |
| 41 | 4-122544 | CAMICIA D.110X741 | LINER D.110X741 |
| 42 | 4-122547 | STAFFA ATTACCO CILINDRO | BRACKET |
| 43 | 4-130671 | FLANGIA POSTERIORE D.110 | REAR FLANGE D.110 |
| 44 | 2-00156 | DADO ES. M8 | HEXAGON NUT M8 |
| 45 | 5-107990 | CILINDRO D.110 CPL. | CYLINDER ASSEMBLY D.110 |
| 46 | 4-122509 | PIASTRA ATTACCO CILINDRO | BRACKET |
| 47 | 2-00211 | RONDELLA D.6 | WASHER D.6 |
| 48 | 2-01257 | DADO ES.A. M6 | AUTOLOCKING HEXAGON NUT M6 |
| 49 | 2-01130 | SEEGER D.16 | SEEGER D.16 |
| 50 | 4-122508 | PERNO D.16 L.57mm | PIN D.16 L.57mm |
| 51 | 430555 | TAPPO D.19X8,7 | CAP D.19X8,7 |
| 52 | 2-00334 | VTCEI M10X50 | HEXAGON SOCKET HEAD SCREW M10X50 |
| 53 | 460087 | SUPPORTO CONI | SUPPORT |
| 54 | 4-405585 | SUPPORTO BLAST | SUPPORT |
| 55 | 4-104230 | COPERTURA RIDUTTORE | GEARBOX COVER |
| 56 | 4-122503 | PIASTRA ATTACCO PEDALE | PLATE |
| 57 | 4-122584 | PIASTRA CHIUSURA | PLATE |
| 58 | 245067 | KIT GUARNIZIONI CILINDRO D.110 | SEALS KIT FOR CYLINDER D.110 |
| 59 | 4-104104 | STAFFA | BRACKET |
| 60 | 426542 | PRESSACAVO | PG16 |
| 61 | 2-02151 | VTBEI M6X8 | SCREW M6X8 |
| 62 | 2-00380 | VTE M10X25 | HEXAGON HEAD SCREW M10X25 |
| 63 | 2-00372 | VTE M8X16 | HEXAGON HEAD SCREW M8X16 |
| 64 | 5-124459/00 | SPECCHIO | MIRROR |

IMPIANTO ELETTRICO ELECTRICAL SYSTEM



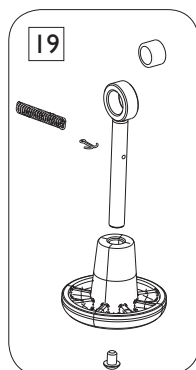
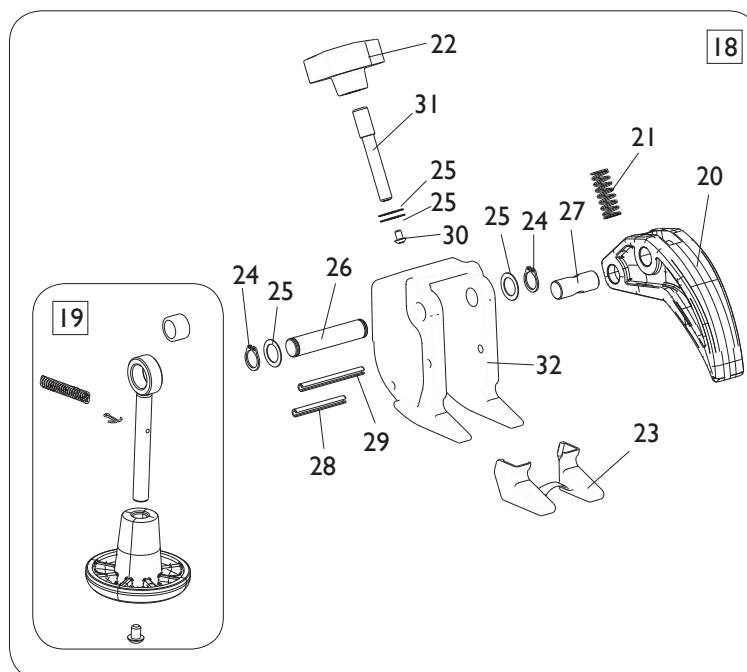
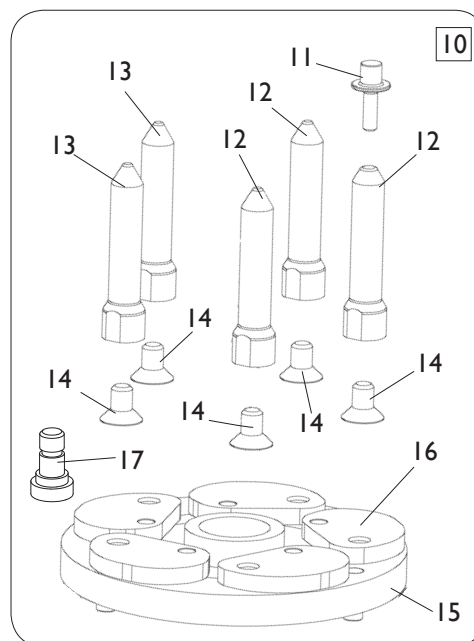
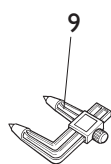
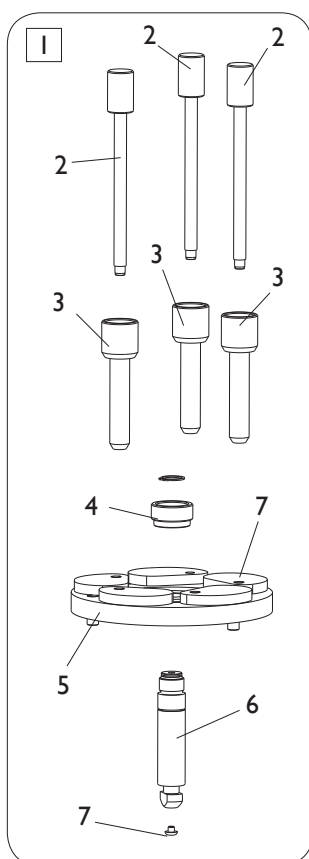
VERSIONE JAPAN JAPAN VERSION



[TORNA AL COMPLESSIVO](#)
[RETURNS TO OVERALL](#)

| Rif. Ref. | Codice Code | Descrizione | Description |
|--------------|----------------|---|--|
| 1 | 5-104966 | MOTOINV. + CAVI 230V/1/50-60HZ | MOTOR WITH CABLE 230V/1/50-60HZ |
| 1 | 5-103599 | MOTOINV. + CAVI 115V/1/60HZ | MOTOR WITH CABLE 115V/1/60HZ |
| 2 | 4-113412 | MOTOINV. 115-230V (NO SCHEDA) | MOTOR 115-230V (NO P.C. BOARD) |
| 3 | 4-115395 | SCHEDA INVERTER+ FILTRO 230V 190HZ | INVERTER PC.BOARD + FILTER 230V 190HZ |
| 3 | 4-111585 | SCHEDA INVERTER 115V 190HZ | INVERTER PC.BOARD 115V 190HZ |
| 4 | 4-109895 | CAVO 4X0,5mm L. 400mm 115-230V | CABLE 4X0,5mm L. 400mm 115-230V |
| 5 | 4-111587 | CAVO ALIMENT. L. 600mm 115-230V | SUPPLY CABLE L. 600mm 115-230V |
| 6 | 4-104526 | CAVO 3X2,5mm L. 3700mm 115-230V | CABLE 3X2,5mm L. 3700mm 115-230V |
| 7 | 5-100723 | CAVO PEDALIERA 4X0,5mm L.900mm | PEDAL CABLE 4X0,5mm L.900mm |
| 8 | 3-04450 | ALIMENTATORE RS 3,3 V 15 W | POWER SUPPLY RS 3,3V 15W |
| 9 | 4-140038 | LAMIERA | PLATE |
| 10 | 2-91656 | VATBIC D 3,9X9,5 | SCREW D.3,9X9,5 |
| 11 | 2-00651 | VTCIC M3X5 | SCREW M3X5 |
| 12 | 3-04448 | SCATOLA GEWISS | BOX |
| 13 | 4-140084 | CAVO LASER L.1800mm | LASER CALBE L.1800mm |

ACCESSORI ACCESSORIES

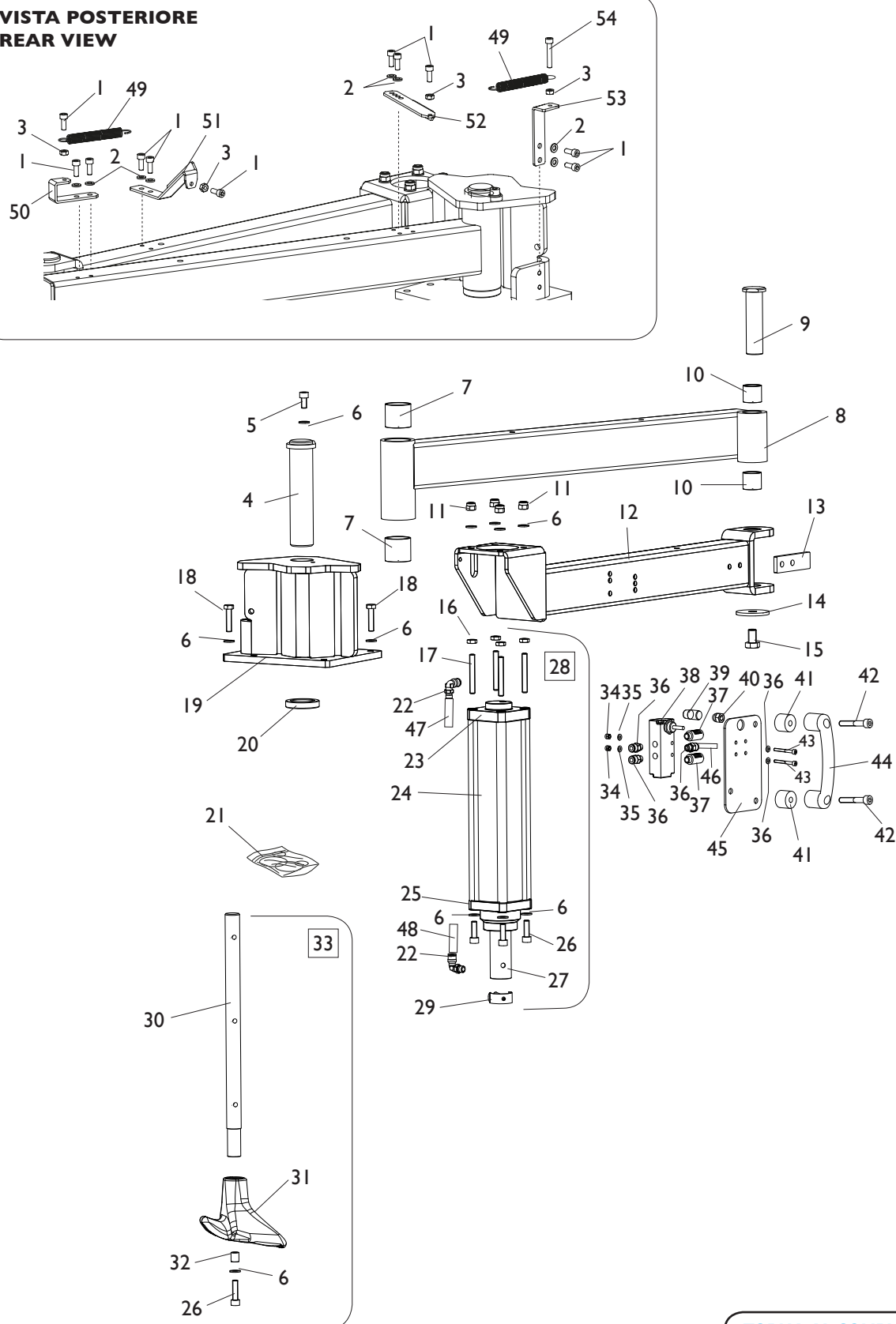


[TORNA AL COMPLESSIVO](#)
[RETURNS TO OVERALL](#)

| Rif. Ref. | Codice Code | Descrizione | Description |
|--------------|----------------|--------------------------------|--------------------------------|
| 1 | 8-11100087 | KIT RUOTE CIECHE | WHEEL KIT BLIND |
| 2 | 361647 | VITE FISSAGGIO CERCHI CIECHI | FIXING BOLT RIMS BLIND |
| 3 | 361648 | GHIERA FISSAGGIO CERCHI CIECHI | FITTING NUT RIMS BLIND |
| 4 | 4-103766 | GHIERA SERRAGGIO FLANGIA | FITTING NUT |
| 5 | 5-102422 | FLANGIA UNIVERSALE 6 PETALI | UNIVERSAL FLANGE 6 PETALS |
| 6 | 4-103765 | BARRA BLOCCAGGIO FLANGE | BAR |
| 7 | 461560 | PROTEZIONE | PROTECTION |
| 8 | 4-107023 | BIELLA | PETAL |
| 9 | 2008157 | RILEVATORE FORI | DETECTOR HOLES |
| 10 | 8-11100039 | KIT RUOTE ROVESCE | REVERSE RIMS KIT |
| 11 | 4-102377 | GHIERA DI SERRAGGIO | FITTING NUT |
| 12 | 5-102721 | COLONNETTA CON SERRAGGIO | COLUMN WITH LOCKING |
| 13 | 5-102720 | COLONNETTA | COLUMN |
| 14 | 2-71769 | VTSPEI M12X20 | CSK SCREW FLAT SOCKET M12X20 |
| 15 | 5-102421 | FLANGIA CERCHI ROVESCII | FLANGE REVERSE RIMS |
| 16 | 4-107024 | BIELLA | PETAL |
| 17 | 4-101250 | VITE FISSAGGIO BIELLA | SPECIAL SCREW |
| 18 | 8-11100120 | MORSETTO BASCULANTE | TILTING CLAMP |
| 19 | 5-101642 | DISCO DI SPINTA | DISK |
| 20 | 4-104051 | DITO | TOOL |
| 21 | 3-01760 | MOLLA D.11,5X30X1,5 | SPRING D.11,5X30X1,5 |
| 22 | 3-01715 | VOLANTINO | HANDLE |
| 23 | 8-11100126 | KIT 6 PROTEZIONI | 6 PROTECTION KIT |
| 24 | 2-00025 | ANELLO D.12 | SEEGER D.12 |
| 25 | 315274 | RONDELLA D.12X18X0,5 | WASHER D.12X18X0,5 |
| 26 | 4-104271 | PERNO | PIN |
| 27 | 4-104258 | PERNO FORATO PICCOLO | SMALL PIN HOLES |
| 28 | 2-71566 | SPINA D.5X40 | PLUG D.5X40 |
| 29 | 2-02219 | SPINA D.5X50 | PLUG D.5X50 |
| 30 | 2-03039 | VTBEI M4X6 | ROUNDED HEAD SCREW SOCKET M4X6 |
| 31 | 4-104259 | PERNO DUE FILETTI | PIN TWO THREADS |
| 32 | 4-104235 | CORPO MORSETTO | BODY |

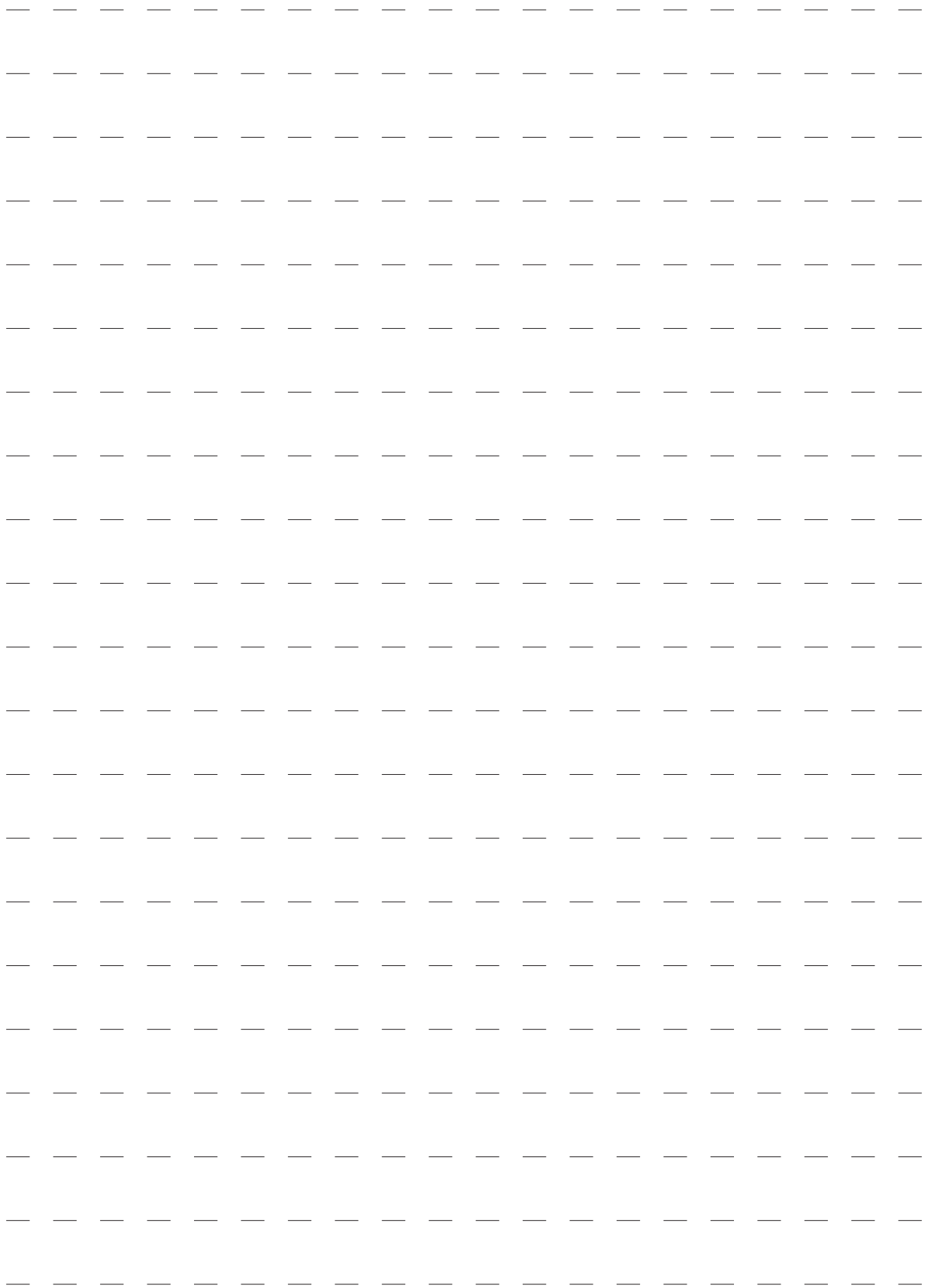
GRUPPO PREMITALLONE BEAD DEPRESSOR GROUP

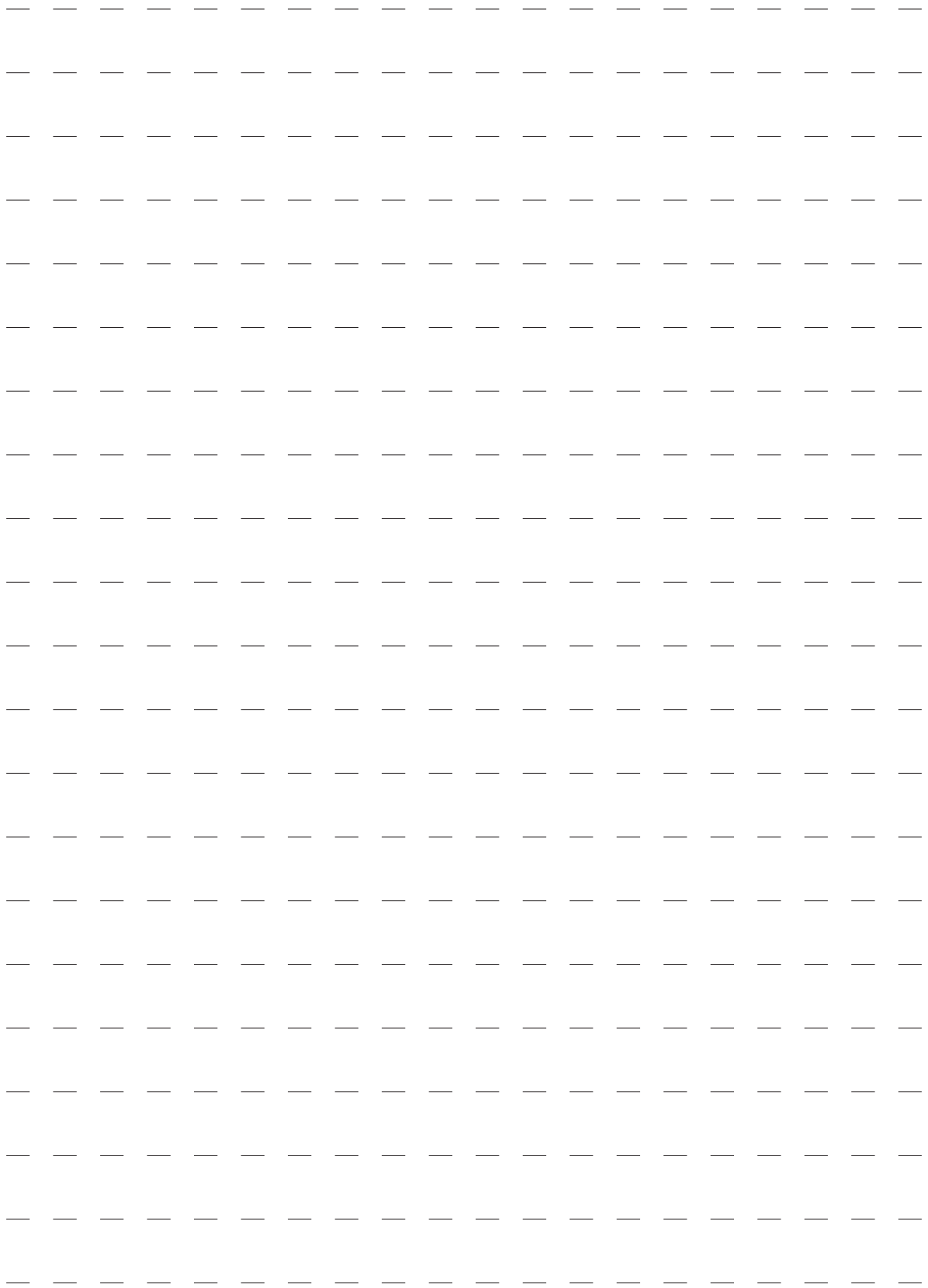
**VISTA POSTERIORE
REAR VIEW**



**[TORNA AL COMPLESSIVO](#)
[RETURNS TO OVERALL](#)**

| Ref. | Code | Descrizione | Description |
|------|----------|-------------------------------|---------------------------------|
| 1 | 2-00309 | VTCEI M6X16 | HEXAGON SOCKET HEAD SCREW M6X16 |
| 2 | 2-00211 | RONDELLA D.6 | WASHER D.6 |
| 3 | 2-00150 | DADO ES. M6 | HEXAGON NUT M6 |
| 4 | 4-107888 | PERNO FULCRO BRACCIO | PIVOT ARM |
| 5 | 2-00319 | VTCEI M8X16 | CIRC. SOCKET HEAD SCREW M8X16 |
| 6 | 2-00212 | RONDELLA D.8 | WASHER D.8 |
| 7 | 3-80114 | BOCCOLA D.35X35 | BUSHING D.35X35 |
| 8 | 5-108000 | BRACCIO CON BOCCOLE | ARM WITH BUSHING |
| 9 | 4-106799 | PERNO SNODO | PIN |
| 10 | 3-80106 | BOCCOLA D.25X25 | BUSHING D.25X25 |
| 11 | 2-01020 | DADO ES.N.A. M8 | AUTOLOCKING HEX. NUT M8 |
| 12 | 4-122578 | BRACCIO ROTANTE | ROTATION ARM |
| 13 | 4-101897 | LAMIERA ANTIROTAZIONE | ANTI-ROTATION PLATE |
| 14 | 318216 | RONDELLA D.12,5X50X4 | WASHER D.12,5X50X4 |
| 15 | 2-00386 | VTE M12X20 | HEX. SOCKET HEAD SCREW M12X20 |
| 16 | 2-91680 | DADO ES.B. M8 | LOW HEXAGON NUT M8 |
| 17 | 2-02683 | VSTEI M8X60 | CSK SCREW FLAT SOCKET M8X60 |
| 18 | 2-02024 | VTE M8X25 | HEX. SOCKET HEAD SCREW M8X25 |
| 19 | 4-107868 | PIASTRA ATTACCO PREMITALLONE | COUPLING PLATE MOUNTING TOOL |
| 20 | 4-107890 | ANELLO DISTANZIALE | SPACER |
| 21 | 5-102410 | KIT GUARNIZIONI CILINDRO D.63 | CYLINDER SEALS KIT |
| 22 | 3-00053 | RACCPN-LO-G1/8G-T6 | FITTING 1/8 |
| 23 | 4-106788 | FLANGIA INFERIORE D.63 | REAR FLANGE D.63 |
| 24 | 4-106790 | CAMICIA D.63X277,5 | LINER D.63X277,5 |
| 25 | 5-104568 | FLANGIA SUPERIORE D.63 | FRONT FLANGE D.63 |
| 26 | 2-02006 | VTCEI M8X25 | CIRC. SOCKET HEAD SCREW M8X25 |
| 27 | 5-104569 | STELO CON BOCCOLE | ROD WITH BUSHING |
| 28 | 5-102369 | CILINDRO PREMITALLONE D.63 | CYLINDER ASSEMBLY |
| 29 | 5-103287 | PERNO DI FERMO CON CLIP | STOP PIN |
| 30 | 4-106794 | STELO INTERNO REGOLABILE | INTERNAL ROD ADJUSTABLE |
| 31 | 4-106888 | PREMITALLONE SAGOMATO | BEAD DEPRESSOR |
| 32 | 4-103846 | DISTANZIALE PREMITALLONE | SPACER |
| 33 | 5-102363 | PREMITALLONE COMPLETO | BEAD DEPRESSOR ASSEMBLY |
| 34 | 2-01018 | DADO ES.N.A. M4 | AUTOLOCKING HEX. NUT M4 |
| 35 | 2-00209 | RONDELLA M4 | WASHER M4 |
| 36 | 3-00461 | RACCPN-D-G1/8G-T6 | FITTING 1/8 |
| 37 | 3-00183 | SILENZIATORE 1/8 | SILENCER 1/8 |
| 38 | 3-01230 | VALVOLA | VALVE |
| 39 | 440585 | IMPUGNATURA | HANDLE |
| 40 | 2-00105 | DADO ES.CIECO M8 | NUT M8 |
| 41 | 461626 | DISTANZIALE MANIGLIA | SPACER |
| 42 | 2-80015 | VTCEI M8X50 | CIRC. SOCKET HEAD SCREW M8X50 |
| 43 | 2-02022 | VTCEI M4X35 | CIRC. SOCKET HEAD SCREW M4X35 |
| 44 | 458702 | MANIGLIA APONTE D.8 | HANDLE D.8 |
| 45 | 363396 | PIATTO FISSAGGIO | PLATE |
| 46 | 329874 | TUBO D.6 L.3600MM | HOSE D.6 L.3600MM |
| 47 | 315268 | TUBO D.6 L.260MM | HOSE D.6 L.260MM |
| 48 | 331060 | TUBO D.6 L.500MM | HOSE D.6 L.500MM |
| 49 | 4-122581 | MOLLA D.12,5X1,3X63 | SPRING D.12,5X1,3X63 |
| 50 | 4-122580 | STAFFA AGGANCIO MOLLA ANT. | BRACKET |
| 51 | 4-122572 | STAFFA BIELLA | BRACKET |
| 52 | 4-122579 | STAFFA AGGANCIO MOLLA POST. | BRACKET |
| 53 | 4-122576 | STAFFA GANCIO MOLLA POST. | BRACKET |
| 54 | 2-02218 | VTCEI M6X35 | HEXAGON SOCKET HEAD SCREW M6X35 |





Code 4-I225I I

Production date : 02 / 2020

Il disegno è realizzato con tutti i particolari ma solo quelli codificati sono forniti come ricambi. L'Azienda si riserva la facoltà di apportare modifiche senza preavviso.

The drawing shows all parts but only the coded parts are supplied as spares. The Company reserves the right to make modifications without prior notice.