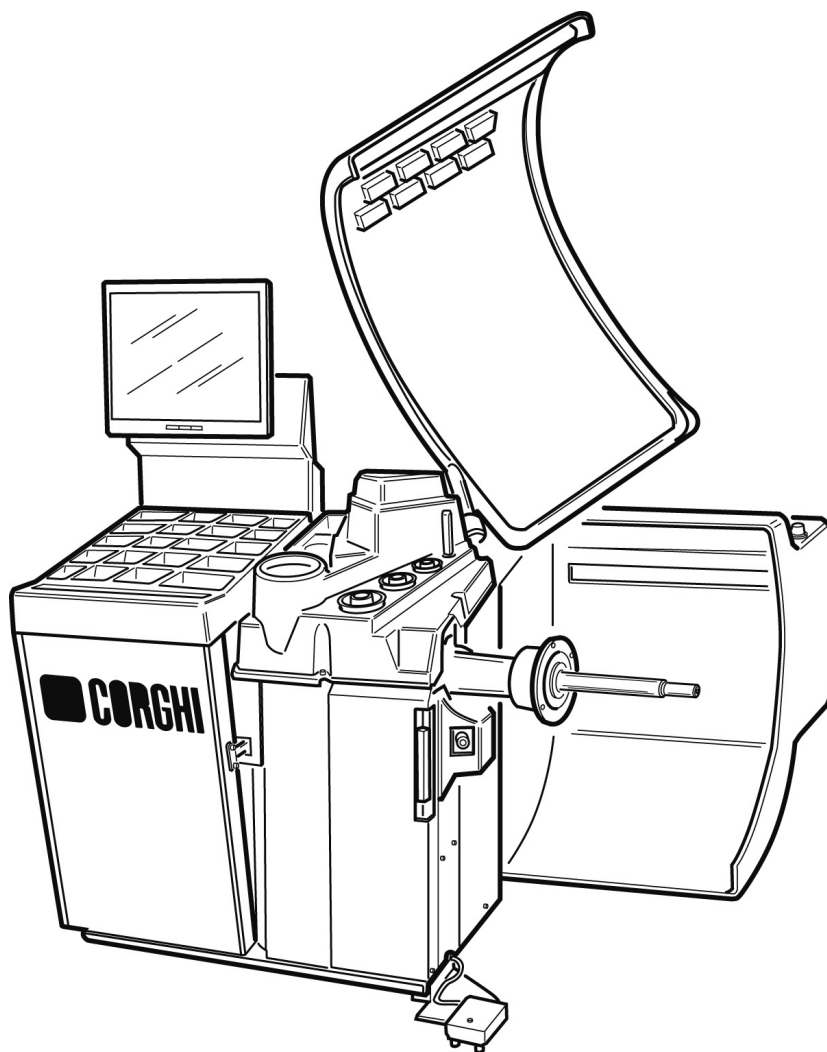


Questo libretto non autorizza l'utente ad intervenire sulle macchine ad esclusione di quanto esplicitamente descritto nel Manuale d'uso, ma consente all'utente di fornire informazioni precise all'Assistenza tecnica, al fine di ridurre i tempi di intervento.

BLUE LIGHT

The "Spare parts" booklet does not authorize the user to carry out work on the machine unless expressly specified in the instruction manual, but does enable him to provide accurate information to the assistance service in order to reduce downtime.

PEZZI DI RICAMBIO SPARE PARTS LIST ERSATZTEILLISTE PIECES DE RECHANGE



Code

4-108721

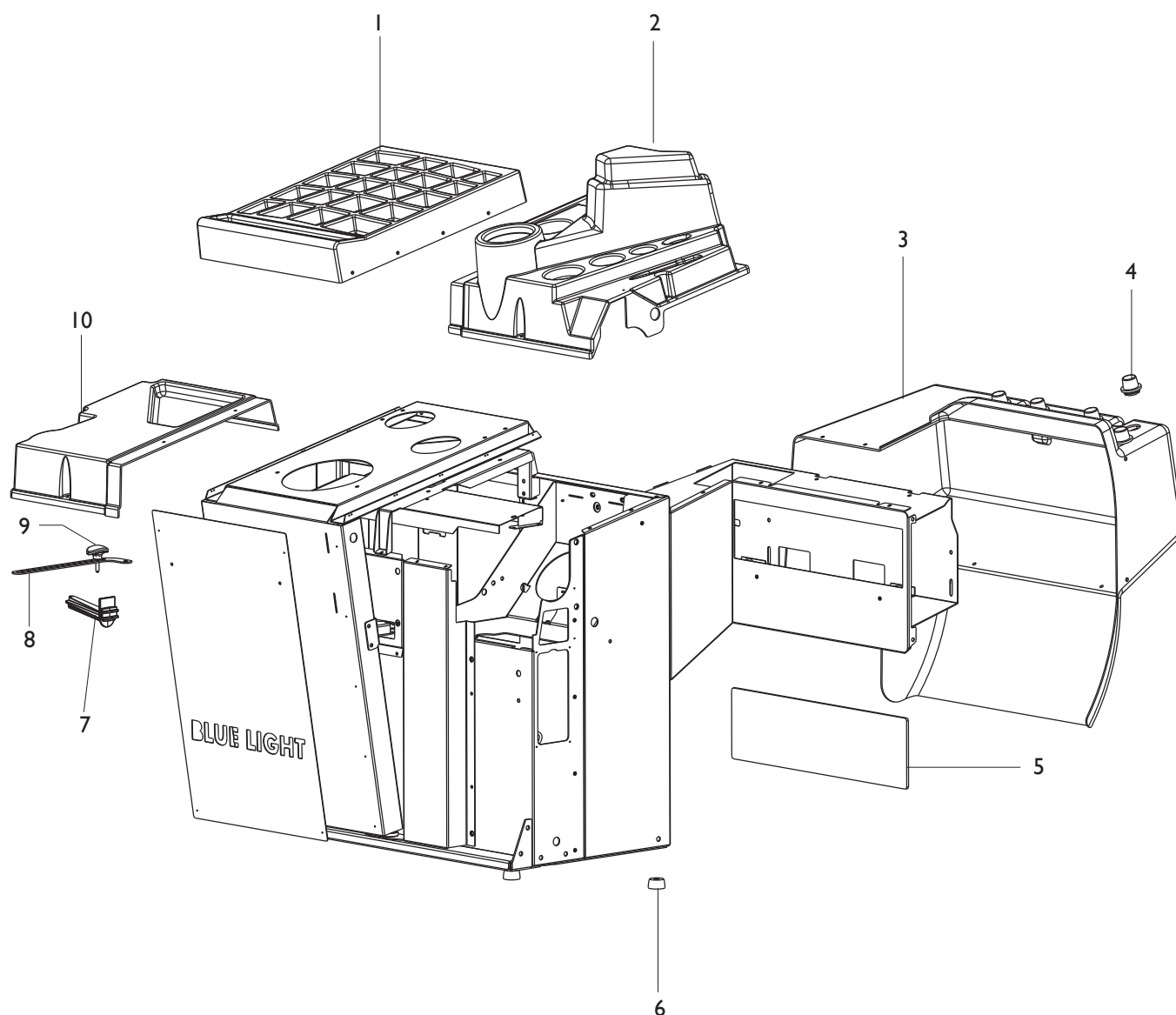
Production from

11 / 2008

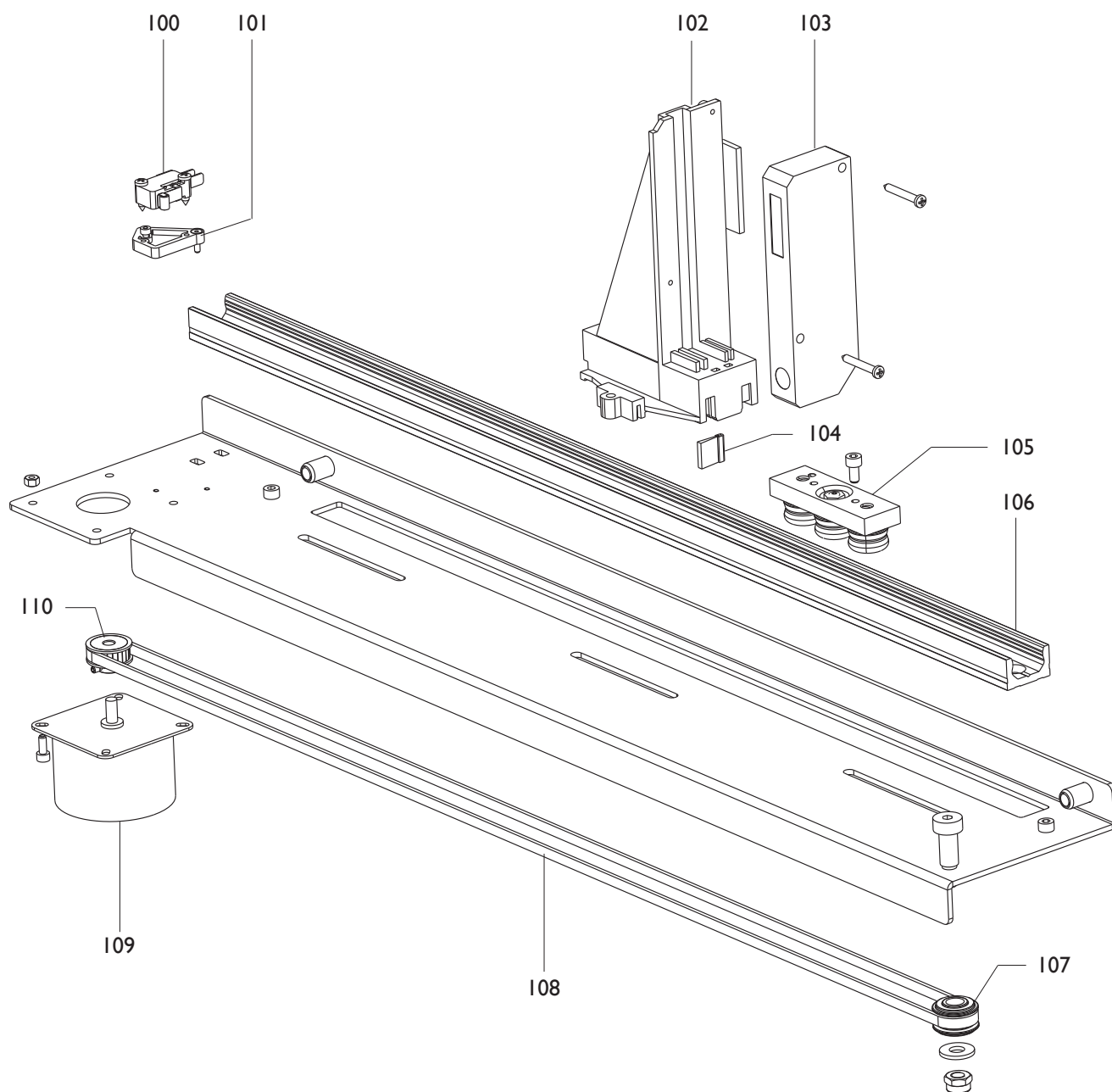
Der Katalog Ersatzteile stellt keine Genehmigung zu eigenmächtigen Eingriffen dar (mit Ausnahme jener im Handbuch beschriebenen), sondern er soll den Anwender in die Lage versetzen, dem technischen Service präzise Informationen zu liefern, um die Reparaturzeiten zu verkürzen.



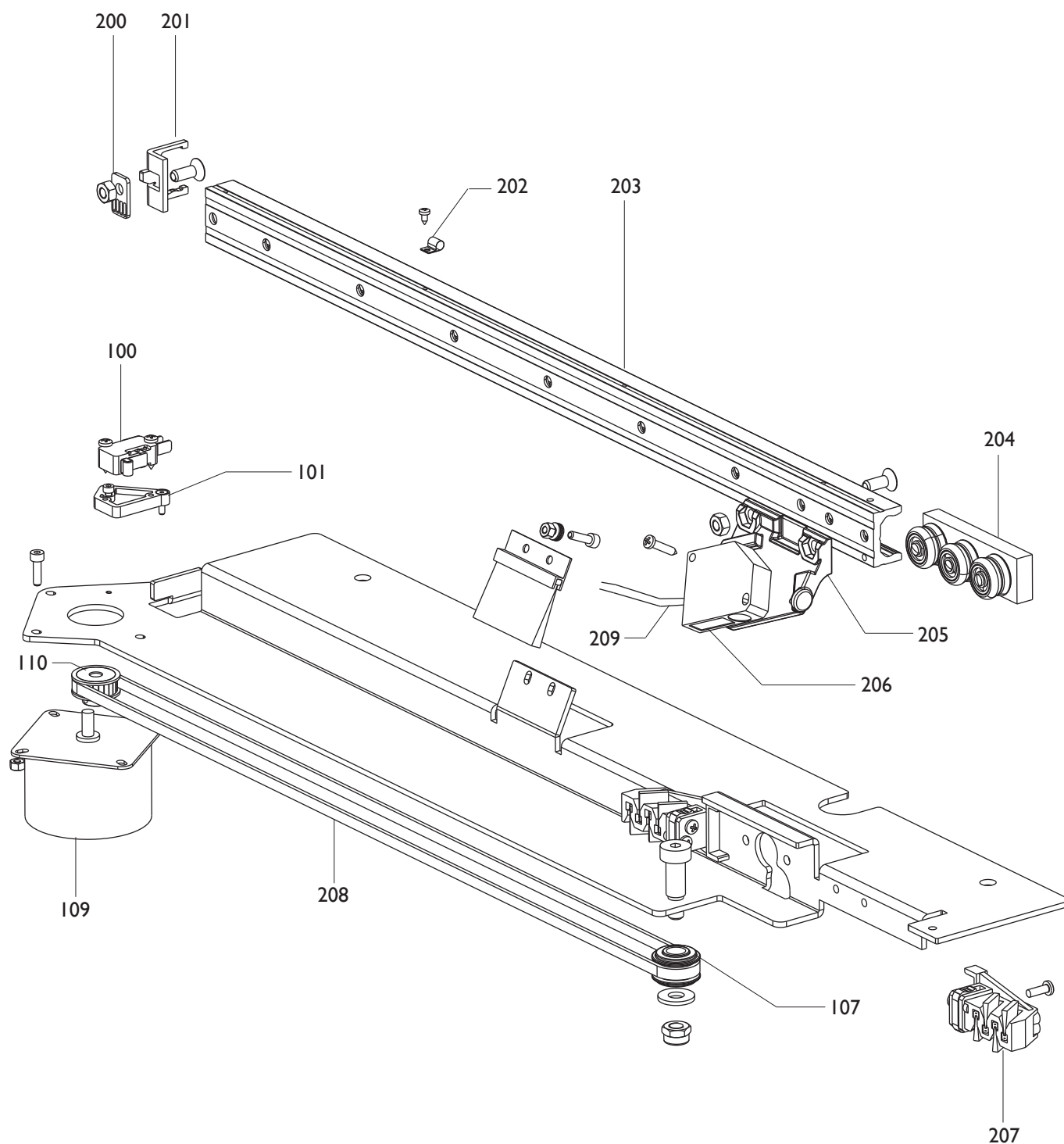
Le livret "Pièces de rechange", n'autorise pas l'utilisateur à intervenir sur les machines, sauf pour tout ce qui est clairement décrit dans le manuel d'utilisation, mais lui permet de fournir des informations précises à l'assistance technique, afin de diminuer les délais d'intervention.



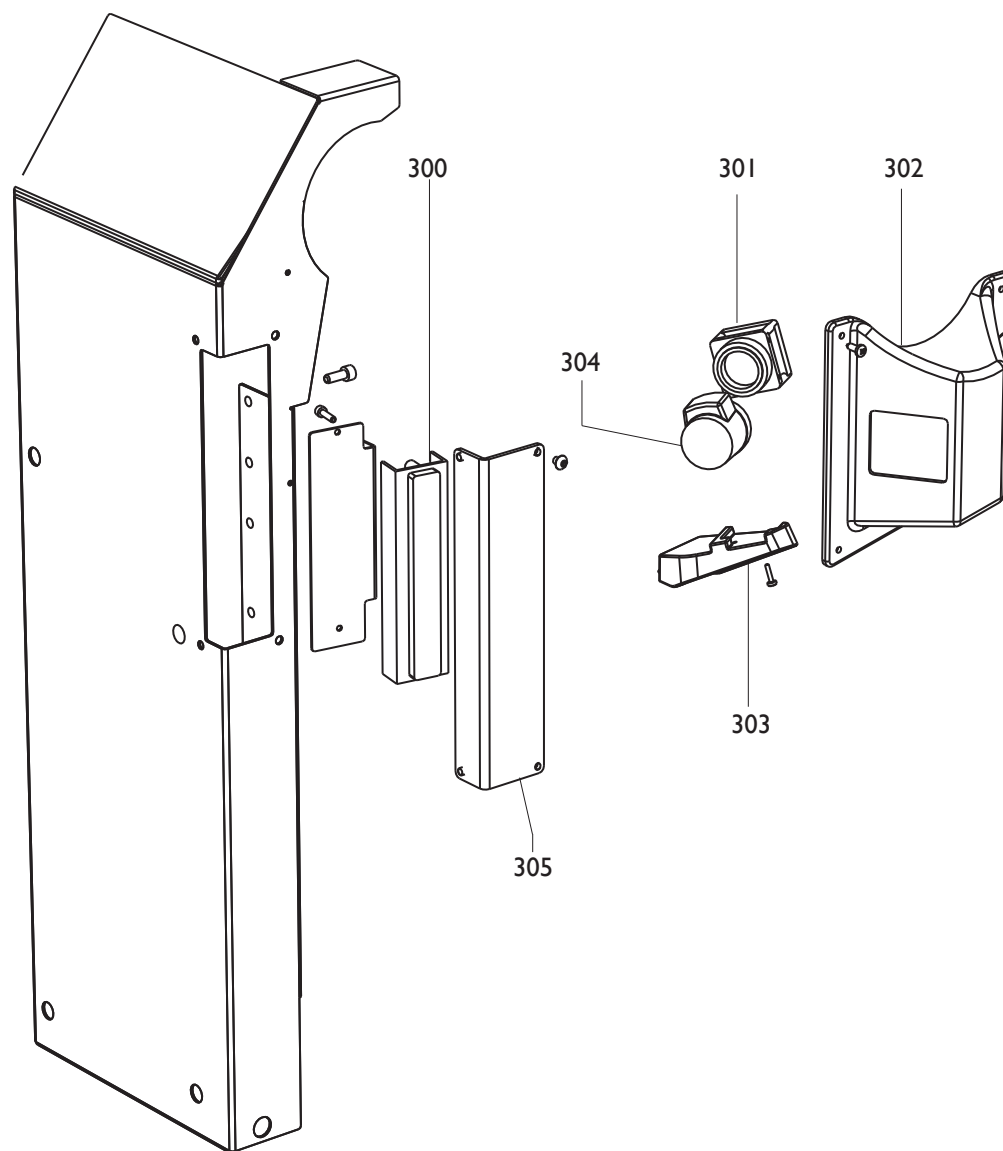
0001	4-107097	COPERCHIO P.PESI	LID
0002	4-107152	COPERCHIO P.PESI DX	RH LID
0003	4-108210	CARENATURA POSTERIORE	HOOD
0004	441224	PORTACONO	SUPPORT
0005	4-108263	VETRO	GLASS
0006	460029	PIEDE	FOOT
0007	438319	PORTAFLANGE	SUPPORT
0008	4-107073	BIELLA	ROD
0009	457928	MANOPOLA	KNOBE
0010	4-107151	COPERCHIO P.PESI SX	LH LID



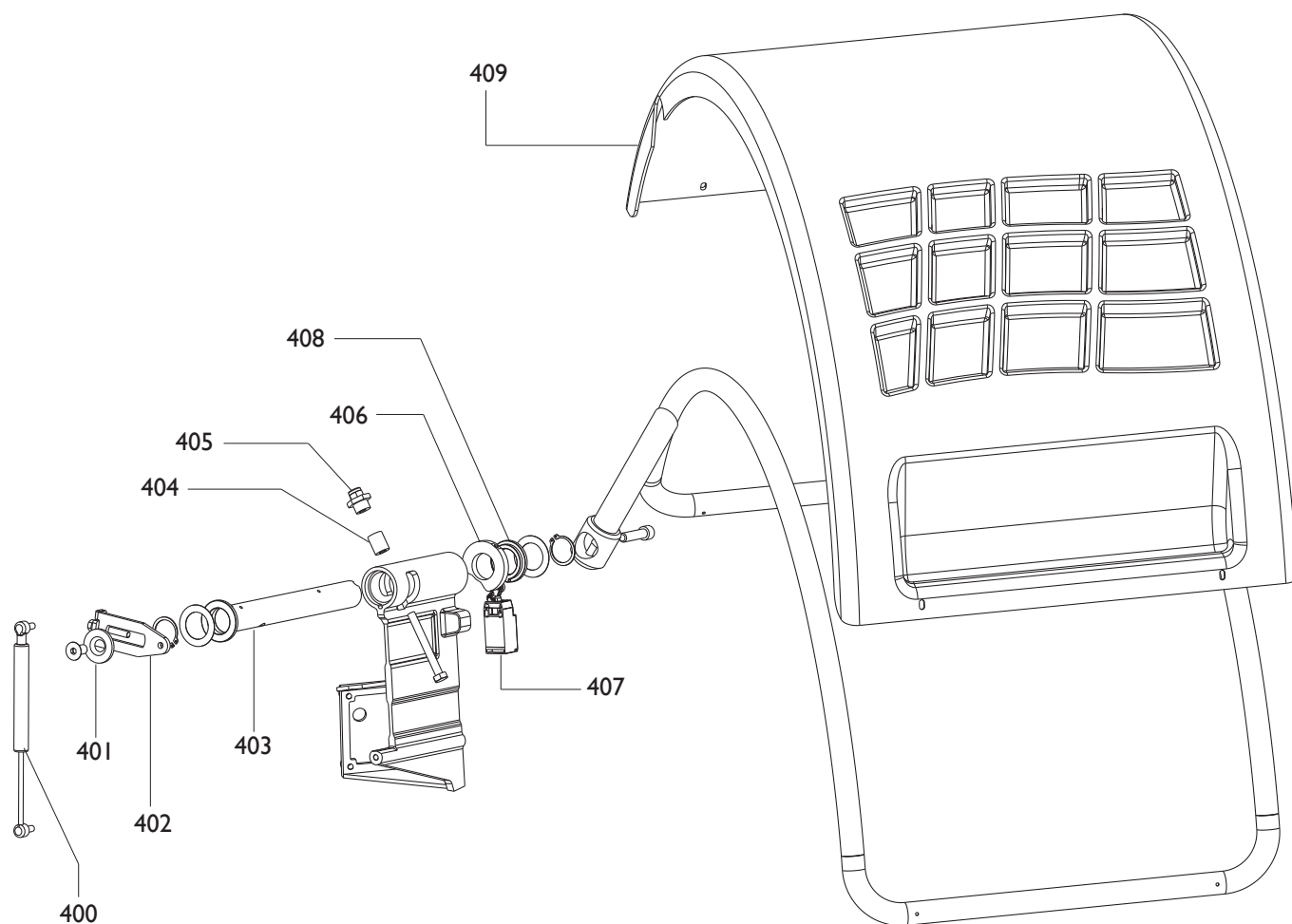
0100	4-102043	MICRO	MICROSWITCH
0101	435898	SUPPORTO MICRO	MICRO SUPPORT
0102	4-108259	SUPPORTO	SUPPORT
0103	5-102590	SENSORE	SENSOR
0104	4-108202	SPAZZOLA	BRUSH
0105	4-108158	CARRELLO	TROLLEY
0106	4-108258	GUIDA	GUIDE
0107	5-103053	PULEGGIA+CUSCINETTO	PULLEY+BEARING
0108	3-80139	CINGHIA	BELT
0109	5-103054	MOTORE	MOTOR
0110	4-107117	PULEGGIA	PULLEY



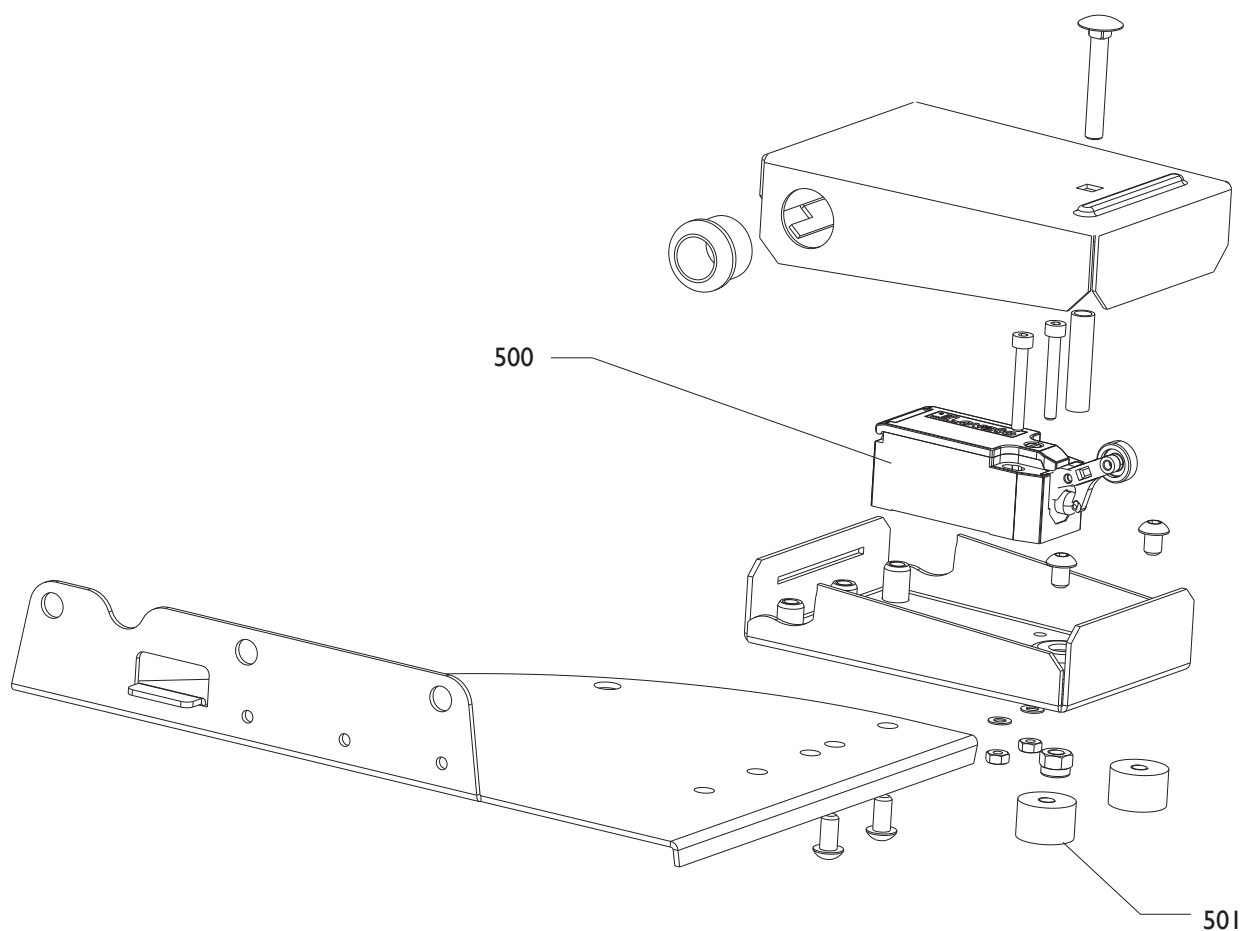
0100	4-102043	MICRO	MICROSWITCH
0101	435898	SUPPORTO MICRO	MICRO SUPPORT
0107	5-103053	PULEGGIA+CUSCINETTO	PULLEY+BEARING
0109	5-103054	MOTORE	MOTOR
0110	4-107117	PULEGGIA	PULLEY
0200	4-107120	PIASTRA	PALTE
0201	4-108170	DISTANZIALE	SPACER
0202	4-108204	COLLARINO	COLLAR
0203	4-108157	GUIDA	GUIDE
0204	4-108158	CARRELLO	TROLLEY
0205	4-108198	SUPPORTO	SUPPORT
0206	4-107134	SENSORE	SENSOR
0207	5-103055	TERGIGUIDA	GUIDE
0208	3-80138	CINGHIA	BELT
0209	5-102440	CAVO	CABLE



0300	4-107099	SK.ILLUM.A LED	LED BOARD
0301	4-107145	TELECAMERA	CAMERA
0302	5-103052	KIT CARTER TELECAMERA	CASIMG
0303	4-107147	SUPPORTO TELECAMERA	SUPPORT
0304	4-107146	OTTICA	OPTICS
0305	4-108324	VETRO	GLASS

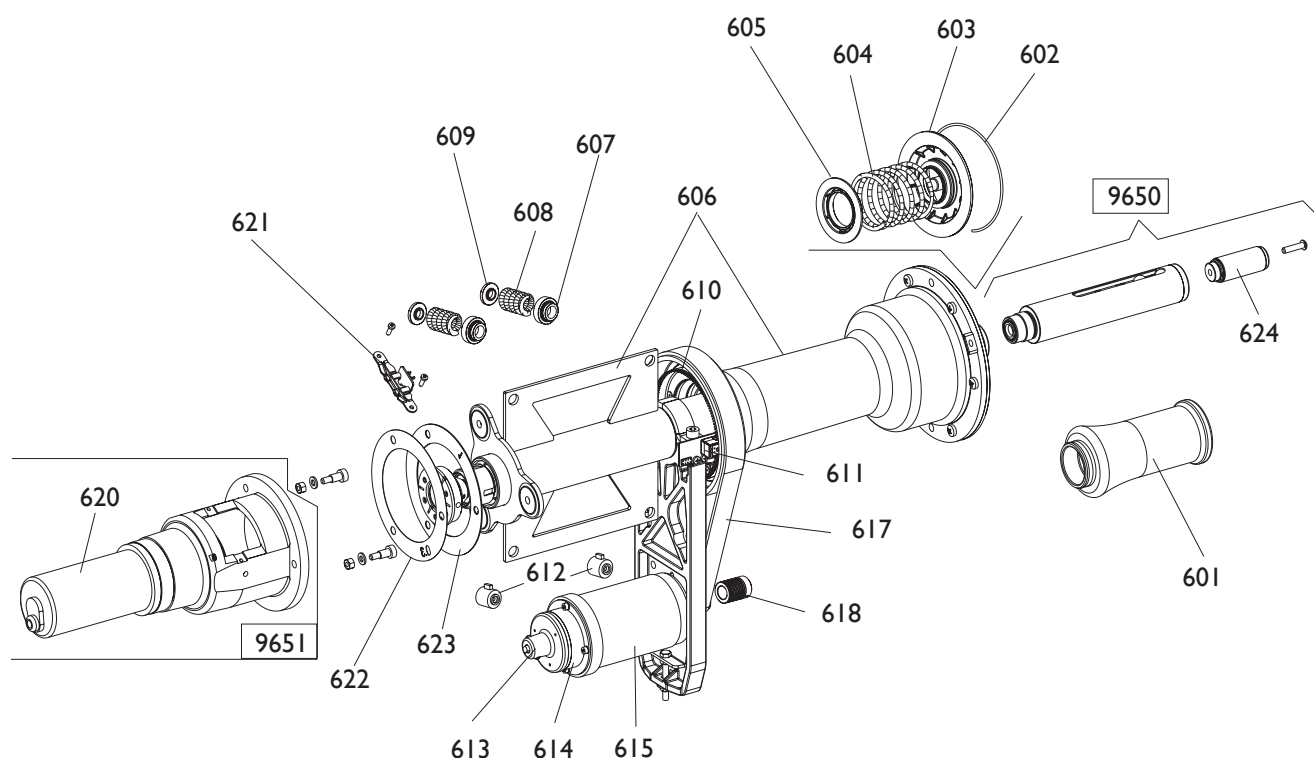


0400	4-107092	MOLLA	SPRING
0401	4-108066	RONDELLA	WASHER
0402	5-103081	BIELLA	ROD
0403	4-107094	PERNO	PIN
0404	4-107093	TUBO	HOSE
0405	4-103907	ESAGONO ECCENTRICO	EXAGONAL ECCENTRIC
0406	4-104570	CAMMA	CAM
0407	457753	MICROINTERRUTTORE	MICRO
0408	4-104554	BOCCOLA	BUSH
0409	4-107087	PROTEZIONE	PROTECTION

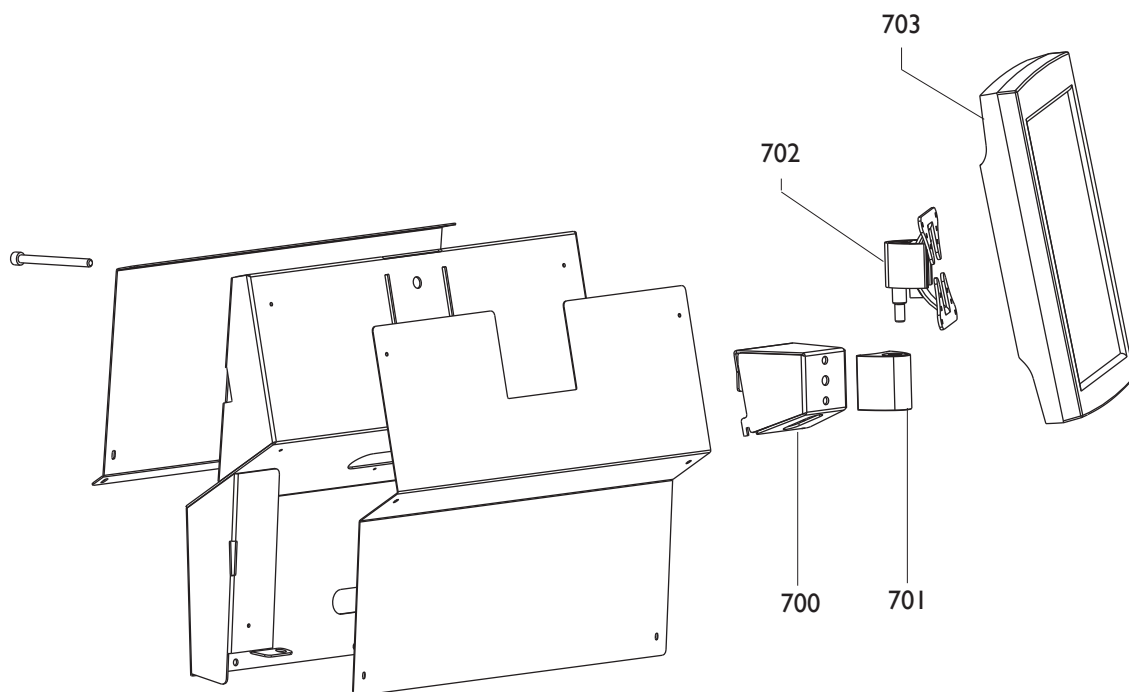
9550

9060	5-102030	PEDALE COMPLETO
0500	4-105962	MICROINTERRUT.
0501	441675	ANTIVIBRAZIONI

PEDAL
SWITCH
VIBRATION DAMPER



9650	5-101504	MOZZO	PIN
0624	4-105349	PROTEZIONE	PROTECTION
9651	5-101982	MOTORIDUTTORE CPL	CPL. GEAR BOX
0620	4-105403	MOTORIDUTTORE	GEAR BOX
0601	4-105397	MANICOTTO	MUFF
0602	4-101740	ANELLO	RING
0603	4-104590	DISCO	DISK
0604	4-104588	MOLLA	SPRING
0605	4-104589	DISCO	DISK
0606	5-103017	GRUPPO	ASSEMBLY
0607	4-104649	BOCCOLA	BUSHING
0608	4-104652	MOLLA	SPRING
0609	4-104650	BOCCOLA	BUSHING
0610	5-102161	DISCO	DISK
0611	5-101447	ENCODER	ENCODER
0612	5-102760	PICK-UP	PICK-UP
0613	4-104596	MOZZO	HUB
0614	4-104594	FRENO	BRAKE
0615	5-103007	MOTORE CC+PULEGIA	CC MOTOR+PULLEY
0617	3-01750	CINGHIA	BELT
0618	4-104599	PULEGIA	PULLEY
0621	5-101537	SCHEDA ENCODER	P.C. BOARD.
0622	4-105937	SPESSORE 0.3 MM	TICKNESS
0623	4-105936	SPESSORE 1 MM	TICKNESS

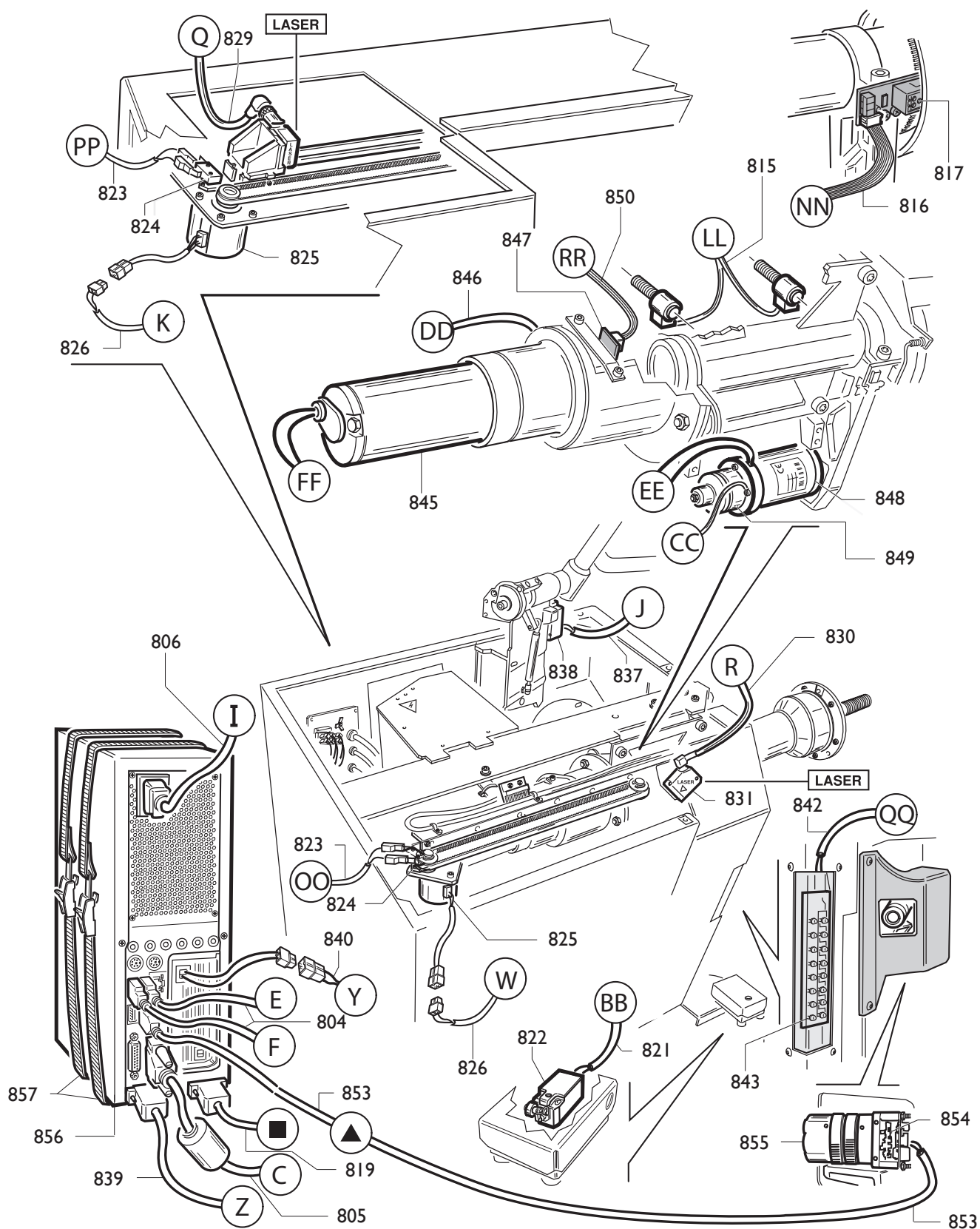


0700	4-107066	ATTACCO MONITOR
0701	4-105400	BLOCCHETTO
0702	4-105402	SUPPORTO
0703	4-107160	MONITOR LCD 19"

SUPPORT
BLOCK
SUPPORT
LCD MONITOR 19"

	BLUE LIGHT	Fig. I	12 / 07	Impianto Elettrico
--	-------------------	---------------	----------------	---------------------------

0801	4-108199	CAVO RETE SCHERM. SP.TED.-IECVDE	CABLE
0802	3-01942	CAVO ALIM.MONITOR PRESA IECVDE	CABLE
0803	4-107160	MONITOR TOUCHSCREEN	MONITOR TOUCHSCREEN
0804	4-107161	CAVO USB TIPO A M/F L.2 MT	CABLE
0805	4-107133	CAVO PROL.VASCH.15HD M/M L3000	CABLE
0807	448914	FILTRO RETE 115/250V 6A	FILTER
0808	4-107112	CAVO 2POLI PHOENIX - PUNTALINI L.500	CABLE
0809	5-103112	ALIMENTATORE SWITCHING 24V	POWER SUPPLY
0810	5-102761	SK ALIM.SWITCHING 400W/100-230V	SWITCHING BOARD
0811	4-105030	CAVO COLL.ALIM.SWITCH.-MCM 48V	CABLE
0812	4-104673	CAVO 4X0,34 MODUI/MODUI L.250	CABLE
0813	4-105032	CAVO 8X0,22 MODUII/MODUII L.270	CABLE
0814	5-103113	SK MBU + SW	MBU+SW BOARD
0815	5-102760	COPPIA PICK UP	PICK UP KIT
0816	454754	FLAT MOLEX 8VIE	FLAT
0818	5-103114	SK INTERFACCIA ENCODER	P.C. BOARD
0819	4-105051	CAVO SERIALE PROG C161	CABLE
0820	4-104683	CAVO FLAT 18VIE	FLAT
0821	4-105978	CAVO	CABLE
0823	4-107108	CAVO	CABLE
0826	4-107110	CAVO	CABLE
0827	5-103115	SK AZMUX	AZMUX P.C. BOARD
0828	4-107111	CAVO	CABLE
0829	5-102590	LASER ESTERNO + CAVO	LASER+CABLE
0830	5-102440	CAVO LASER INTERNO	CABLE
0832	4-107109	CAVO	CABLE
0833	4-107141	CAVO	CABLE
0834	4-107667	CAVO	CABLE
0835	4-107668	CAVO	CABLE
0836	5-103116	SK ACQSER	ACQSER P.C. BOARD
0837	4-107115	CAVO	CABLE
0839	463063	CAVO SERIALE	CABLE
0840	463192	CAVO ALIMENTAZIONE	CABLE
0841	5-103117	SK FLASH DRIVER	FLASH DRIVER P.C. BOARD
0842	4-107142	CAVO	CABLE
0844	5-102685	SK MOTORI	MOTORS P.C. BOARDS
0850	4-102558	CAVO FLAT	CABLE
0851	422083	VENTILATORE	FAN
0852	260763	CAVO	CABLE
0858	5-102043	FUSIBILI 8AT	FUSES 8AT
0859	3-01941	INTERRUTTORE	SWITCH



		BLUE LIGHT	Fig. I/I	II / 08	Impianto Elettrico
0804	4-107161	CAVO USB TIPO A M/F L_2 MT			CABLE
0805	4-107133	CAVO PROL.VASCH.15HD M/M L3000			CABLE
0806	4-107769	CAVO ALIM. PRESA VDE (FEM) - FD			CABLE
0815	5-102760	COPPIA PICK UP			PICK UP KIT
0816	454754	FLAT MOLEX 8VIE			FLAT
0817	5-101447	SK ENCODER			ENCODER BOARD
0819	4-105051	CAVO SERIALE PROG C161			CABLE
0821	4-105978	CAVO			CABLE
0822	4-105962	MICRO PEDALE			PEDAL
0823	4-107108	CAVO			CABLE
0824	4-102043	MICRO			MICROSWITCH
0825	5-103054	MOTORE PP			MOTOR
0826	4-107110	CAVO			CABLE
0829	5-102590	LASER ESTERNO + CAVO			LASER+CABLE
0830	5-102440	CAVO LASER INTERNO			CABLE
0831	4-107134	LASER INTERNO			INTERNAL LASER
0837	4-107115	CAVO			CABLE
0838	457753	MICRO			MICROSWITCH
0839	463063	CAVO SERIALE			CABLE
0840	463192	CAVO ALIMENTAZIONE			CABLE
0842	4-107142	CAVO			CABLE
0843	4-107099	SK ILLUMINATORE			ILLUM.P.C. BOARD
0845	4-105403	MOTORIDUTTORE			GEARBOX
0846	4-105133	FRIZIONE			CLUTCH
0848	5-103007	MOTORE CC + PULEGGIA			CC MOTOR + PULLEY
0849	4-104594	FRENO			BRAKE
0850	4-102558	CAVO FLAT			FLAT
0853	4-107148	CAVO TELECAMERA			CABLE
0854	4-107145	TELECAMERA			CAMERA
0855	4-107146	OTTICA			OPTICS
0856	5-103118	PC COMPLETO COLLAUDATO			CPL.PC
0857	461826	CINGHIA			BELT

Blank lined paper for writing.

Il disegno è realizzato con tutti i particolari ma solo quelli codificati sono forniti come ricambi. L'Azienda si riserva la facoltà di apportare modifiche senza preavviso.



S.S. 468 n°9 - 42015 Correggio (RE) ITALY
Tel. ++39 0522 639111 - Fax ++39 0522 639150
www.corgi.com - info@corgi.com

The drawing shows all parts but only the coded parts are supplied as spares. The Company reserves the right to make modifications without prior notice.

COMIM - Cod. 4-108721 - 1108