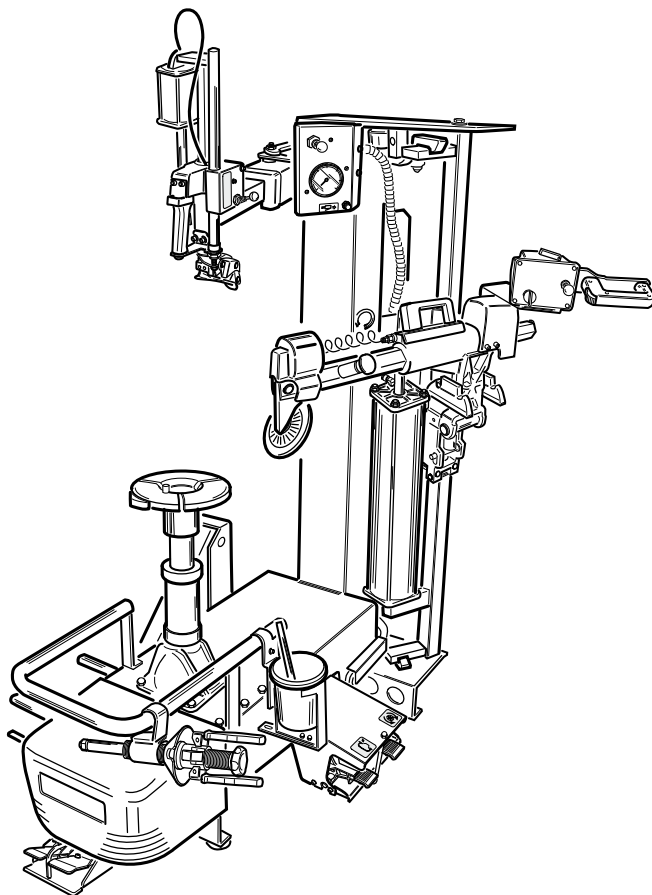


Questo libretto non autorizza l'utente ad intervenire sulle macchine ad esclusione di quanto esplicitamente descritto nel Manuale d'uso, ma consente all'utente di fornire informazioni precise all'Assistenza tecnica, al fine di ridurre i tempi di intervento.

# Artiglio 50

The "Spare parts" booklet does not authorize the user to carry out work on the machine unless expressly specified in the instruction manual, but does enable him to provide accurate information to the assistance service in order to reduce downtime.

## PEZZI DI RICAMBIO SPARE PARTS LIST ERSATZTEILLISTE PIECES DE RECHANGE



Code

4-I04760H

Production

09 / 12

Der Katalog Ersatzteile stellt keine Genehmigung zu eigenmächtigen Eingriffen dar (mit Ausnahme jener im Handbuch beschriebenen), sondern er soll den Anwender in die Lage versetzen, dem technischen Service präzise Informationen zu liefern, um die Reparaturzeiten zu verkürzen.



Le livret "Pièces de rechange", n'autorise pas l'utilisateur à intervenir sur les machines, sauf pour tout ce qui est clairement décrit dans le manuel d'utilisation, mais lui permet de fournir des informations précises à l'assistance technique, afin de diminuer les délais d'intervention.



I

Sul presente documento sono stati indicati in grassetto i codici che sono variati rispetto a quelli riportati nella precedente versione del 01/12

En

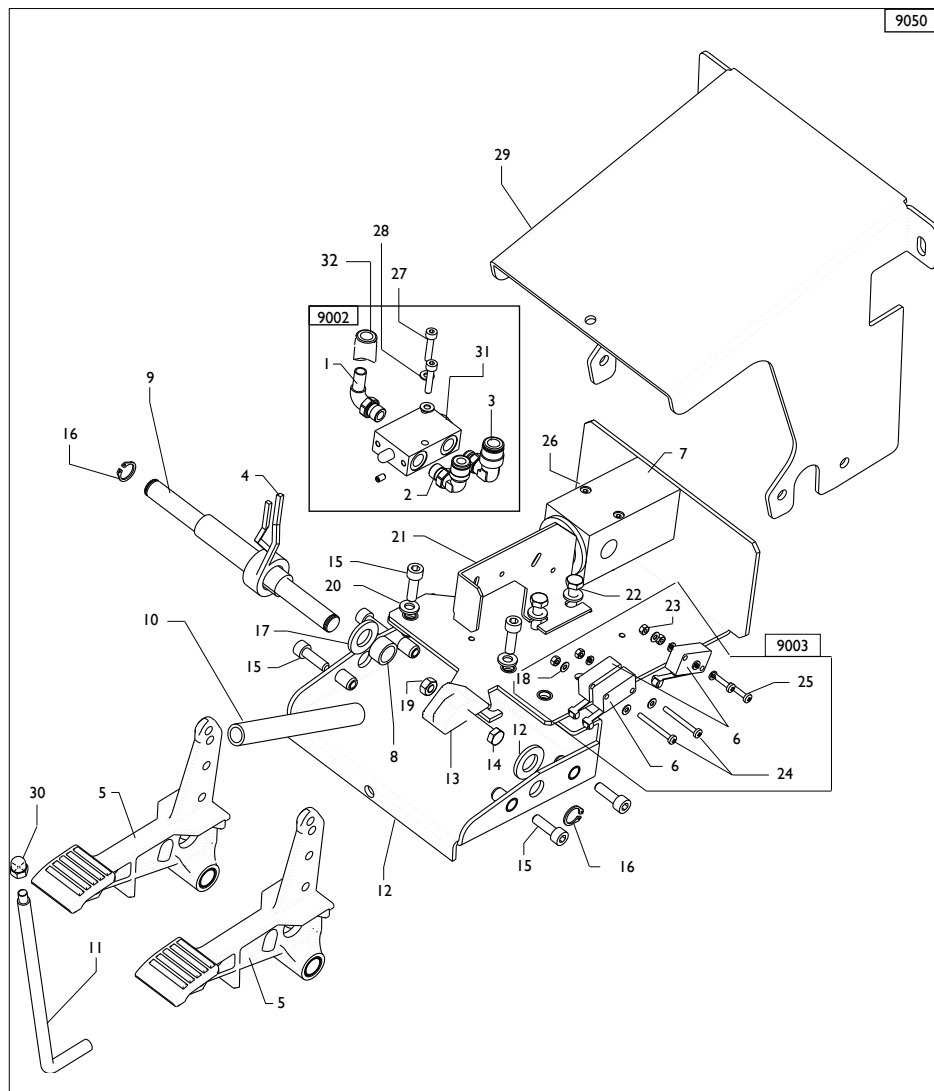
Codes that have changed from those given in the previous version dated 01/12 are indicated in bold type in this document

De

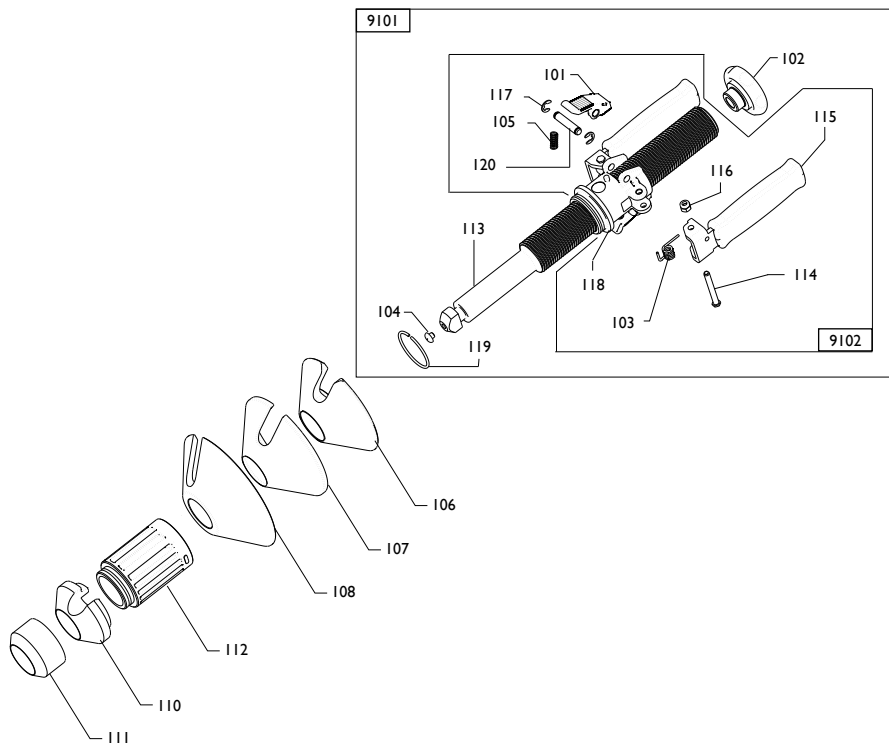
Die gegenüber der Vorgängerversion vom 01/12 geänderten Codes sind im vorliegenden Dokument fettgedruckt angegeben

Fr

Ce document reporte en gras les codes qui ont été modifiés par rapport à ceux reportés dans la version précédente du mois de 01/12

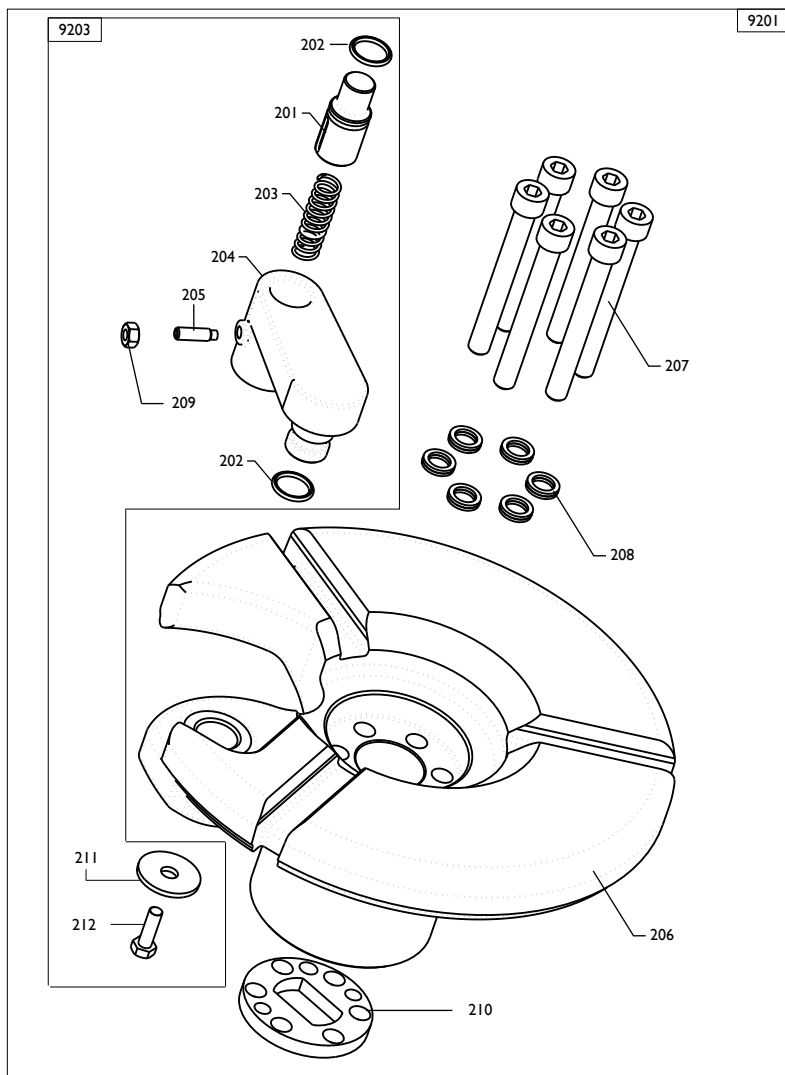


9050	5-101194	PEDALIERA CPL.	CONTROL PEDAL
9002	5-102712	VALVOLA	VALVE
0001	3-01176	RACCORDO RESCA L-G1/8-T6	CONNECTOR
0002	3-00218	RACCORDO L-G1/8C-T8	CONNECTOR
0003	3-00049	RACCORDO LO-G1/8G-T8	CONNECTOR
0031	3-01178	VALVOLA	VALVE
0004	4-109664	MOLLA	SPRING
0005	5-102714	PEDALE	PEDAL
0007	3-00432	VALVOLA	VALVE
0008	4-103658	DISTANZIALE	SPACER
0009	4-103656	PERNO	PIN
0010	410628	MOLLA	SPRING
0011	361537	PERNO	PIN
0012	5-103284	BASAMENTO PEDALIERA	PEDAL BASE
0013	461535	BLOCCETTO MICRO	SUPPORT
0014	2-00368	VITE M6x50	SCREW
0015	2-00310	VITE M6x20	SCREW
0016	2-00025	SEEGER D.12	SEEGER D.12
0017	2-00214	RONDELLA D.12	WASHER
0018	2-00208	RONDELLA D.3	WASHER
0019	2-00150	DADO M6	NUT
0020	2-00211	RONDELLA D.6	WASHER
0026	2-00851	VITE M4x40	SCREW
0027	2-00291	VITE M4x20	SCREW
0028	2-00209	RONDELLA D.4	WASHER
0029	4-103655	LAMIERA COPERTURA	PLATE
0030	2-00104	DADO CIECO M6	NUT
0032	5-101196	TUBO GONFIAGGIO CPL	TUBE
9003	261523	GRUPPO MICRO	KIT MICROSWITCH
0006	440874	MICROINTERRUT.	MICROSWITCH
0021	361524	LAMIERA	PLATE
0022	2-00362	VITE M6x20	SCREW
0023	2-00124	DADO M3	NUT
0024	2-00578	VITE M3x30	SCREW
0025	2-00575	VITE TE M3x16	SCREW



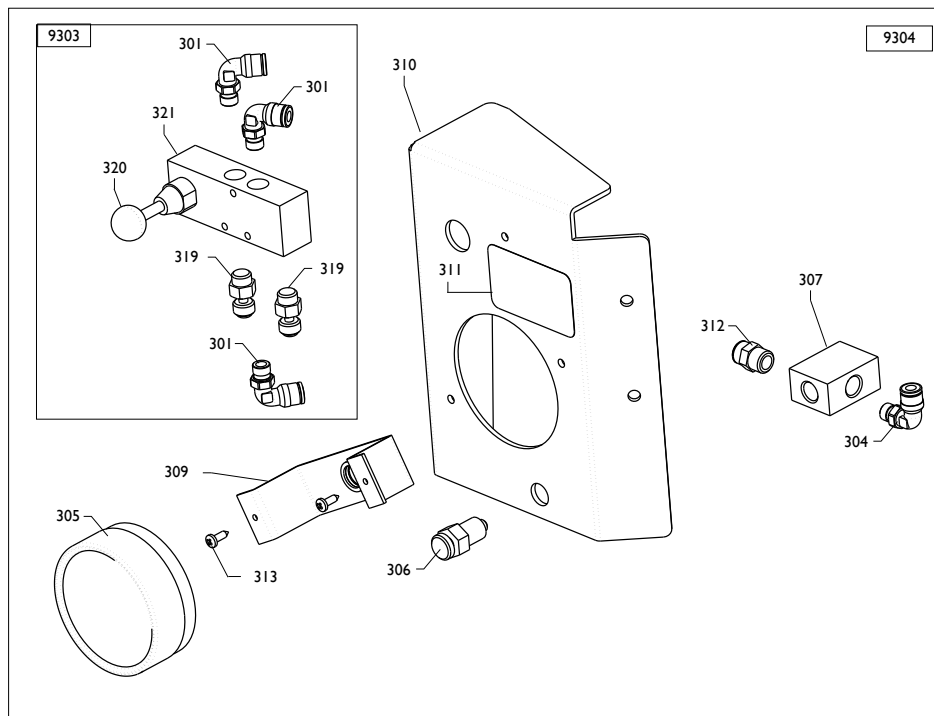
9101	5-101197	MANIGLIA	HANDLE
0102	4-103669	MANOPOLA	KNOB
0104	461560	PROTEZIONE	SHIELD
0113	4-103668	BARRA	PIN
9102	5-103532	GHIERA DI SERRAGGIO	NUT
0101	4-104822	CRICCHETTO	CRICK
0103	4-103673	MOLLA	SPRING
0105	4-103675	MOLLA	SPRING
0120	4-104810	PERNO	PIN
0114	4-104809	PERNO	PIN
0115	5-101931	LEVA+MANIGLIA	LEVER
0116	2-01257	DADO N.A. M6	NUT
0117	2-00021	ANELLO ELD.8	SEEGER
0118	4-103226	CORPO GHIERA	NUT
0119	4-103670	ANELLO FILO TONDO 48x2,5	RING


0106	4-103230	CONO ø120	CONE ø120
0107	4-103232	PROTEZIONE	SHIELD
0108	4-103229	CONO ø145	CONE ø145
0110	4-103234	CONO ø75	CONE ø75
0111	4-103235	CONO ø58	CONE ø58
0112	5-102722	PROLUNGA	EXTENSION CORD



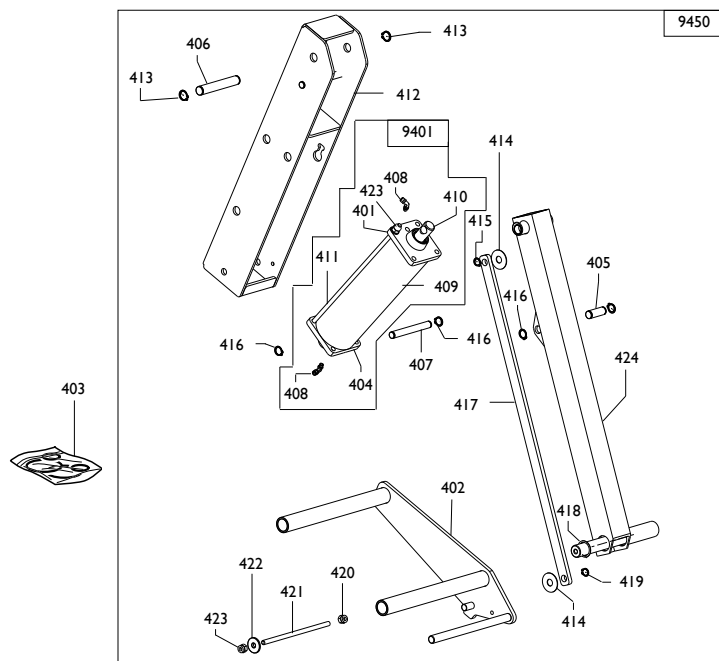


9201	5-101199	AUTOCENT.	TURNTABLE
0206	4-103152	CENTRAGGIO	SPIGOT
0207	4-104811	VITE	SCREW
0208	4-102752	RONDELLA	WASHER
0210	4-103142	RONDELLA	WASHER
9202	5-102707	LEVA	LEVER
0201	4-102326	PERNO	PIN
0202	424630	ANELLO	RING
0203	4-102331	MOLLA	SPRING
0204	4-103143	LEVA	LEVER
0205	2-02560	VITE	SCREW
0209	2-00676	DADO M5	NUT
0211	434168	RONDELLA D.6	WASHER
0212	2-00355	VITE M5x16	SCREW

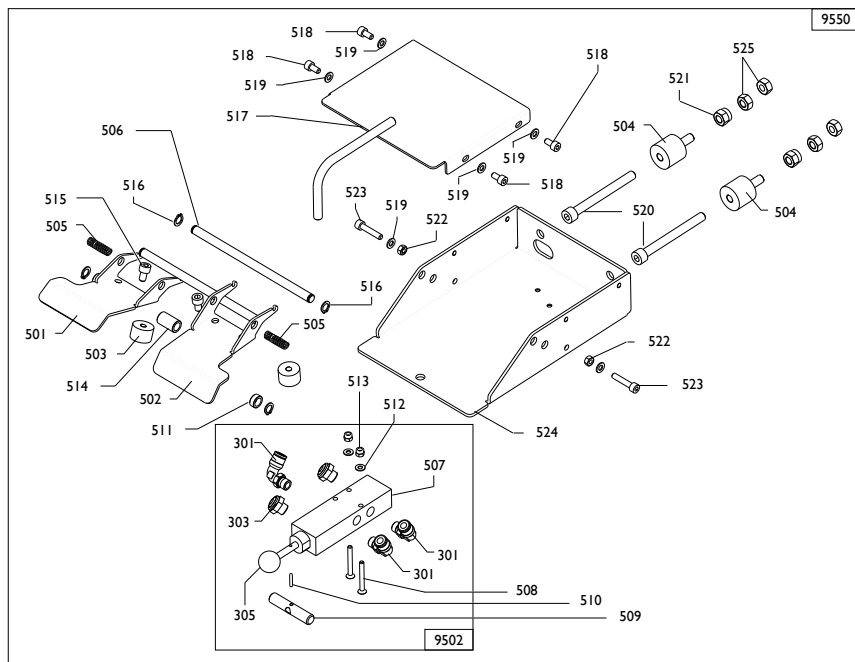


	Artiglio 50	Comando ribaltamento manometro	TAV.D - 09 / 12
--	-------------	-----------------------------------	-----------------

9304	5-101209	COMANDO RIBALT.+MANOMETRO	BAR/PSI	COMMAND	
<b>9304</b>	<b>5-105055</b>	<b>COMANDO RIBALT.+MANOMETRO</b>	<b>BAR</b>		<b>COMMAND</b>
0304	5-102687	RACC.+STROZZ.D.I	CONNECTOR	ANSCHLUSS	
0305	3-00490	MANOMETRO bar/psi	PRESSURE GAUGE		
<b>0305</b>	<b>3-00486</b>	<b>MANOMETRO bar</b>	<b>PRESSURE GAUGE</b>		
0306	235463	VALVOLA	VALVE	VENTIL	VANNE
0307	352586	BLOCCHETTO	BLOCK	BLOCK	BLOC
0309	353537	SUPPORTO MANOMETRO		SUPPORT	
0310	4-103719	LAMIERA SUPPORTO MANOM.		SUPPORT	
0311	4-103720	ADESIVO COMANDI RIBALTAMENTO		LABEL	
0313	2-71485	VITE D.3,9x12,7		SCREW	
0312	3-00459	RACCORDO	CONNECTOR	ANSCHLUSS	RACCORD
0320	3-00711	POMOLO		HANDLE	
0321	3-00374	VALVOLA		VALVE	
9303	5-103220	VALVOLA	VALVE	VENTIL	VANNE
0301	3-00053	RACCORDO	CONNECTOR	ANSCHLUSS	RACCORD
0319	433675	REGOLATORE 1/8	REGULATOR 1/8		

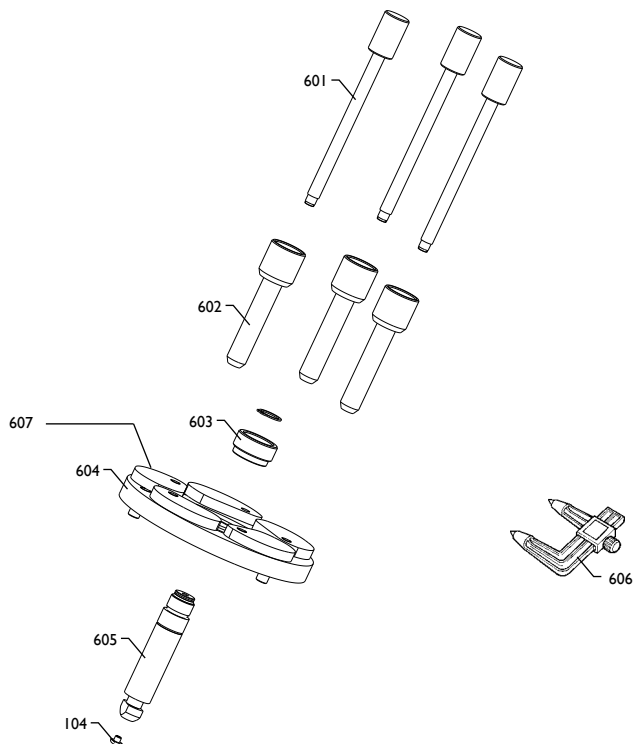


9450	5-101212	GRUPPO SOLLEVATORE	LIFT
0402	4-103728	SUPPORTO	SUPPORT
0405	4-103723	PERNO	PIN
0406	4-103725	PERNO	PIN
0407	4-103724	PERNO	PIN
0412	4-103738	TELAIO SOLLEV.	BODY
0413	2-01130	SEEGER D.16	SEEGER
0414	344208	RONDELLA	WASHER
0415	2-00025	SEEGER D.12	SEEGER
0416	2-00026	SEEGER D.14	SEEGER
0417	4-103722	BIELLA	ROD
0418	325561	RONDELLA	WASHER
0420	2-00151	DADO M8	NUT
0421	4-103727	BARRA FILETTATA M8	BAR
0422	4-103726	RONDELLA	WASHER
0423	2-01020	DADO M8	NUT
0424	4-103733	BRACCIO	ARM
9401	5-101215	CILINDRO	CYLINDER
0401	361519	FLANGIA ANT.	FLANGE
0404	361975	FLANGIA POST.	FLANGE
0408	5-102686	RACC.+STROZ.D.1.75	CONNECTOR
0409	4-103752	CAMICIA	LINER
0410	4-103754	STELO	ROD
0411	4-103753	TIRANTE M8x298	ROD
0403	262382	KIT GUARNIZIONI	SEALS KIT
0424	4-103733	BRACCIO	ARM



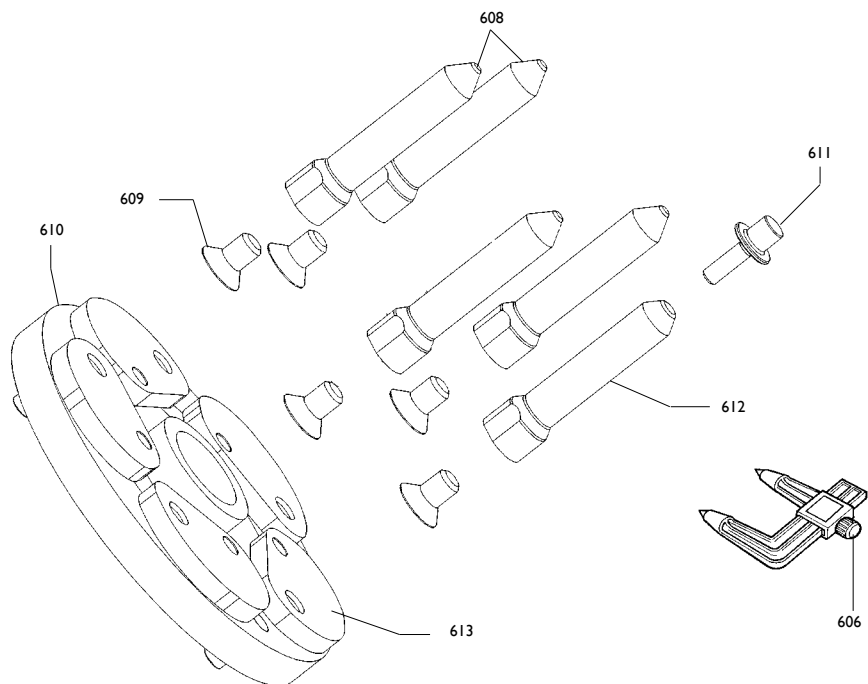
9550	5-101213	PEDALIERA	PEDAL
0501	4-104835	PEDALE SX	PEDAL SX
0502	4-104836	PEDALE DX	PEDAL DX
0503	441675	ANTIVIBRANTE	VIBRATION DAMPER
0504	4-104848	ANTIVIBRANTE	VIBRATION DAMPER
0505	4-104551	MOLLA	SPRING
0506	4-103742	PERNO	PIN
0508	2-01212	VITE M4x35	SCREW
0509	4-103750	PERNO AZION.VALVOLA	PIN
0510	2-01307	SPINA ELASTICA	SPIROL
0511	4-103744	DISTANZIALE	SPACER
0512	2-00209	RONDELLA	WASHER
0513	2-01018	DADO M4	NUT
0514	4-103746	DISTANZIALE	SPACER
0515	2-00308	VITE M6x10	SCREW
0516	2-00021	SEEGER D.8	SEEGER
0517	4-103747	COPERTURA PEDALIERA	COVER
0518	2-00891	VITE M5x10	SCREW
0519	2-00210	RONDELLA D.5	WASHER
0520	2-02647	VITE M8x80	SCREW

0521	2-01020	DADO M8	NUT
0522	2-00676	DADO M5	NUT
0523	2-00299	VITE M5x25	SCREW
0524	4-103745	LAMIERA PEDALIERA BASE	
0525	2-00151	DADO M8	NUT
9502	5-102696	VALVOLA	VALVE
0301	3-00053	RACCORDO LO-G1/8G-T6	CONNECTOR
0303	3-00181	SILENZIATORE fili acciaio	SILENCER
0305	3-03029	POMOLO	HANDLE
0507	3-01642	VALVOLA	VALVE

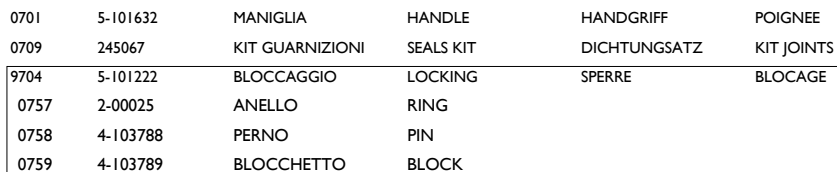



0104	461560	PROTEZIONE	SHIELD	ABDECKUNG	PROTECTION
0601	361647	VITE	SCREW	SCHRAUBE	VIS
0602	361648	GHIERA	NUT	NUTMUTTER	BAGUE
0603	4-103766	GHIERA	NUT	NUTMUTTER	BAGUE
0604	463082	FLANGIA 5 petali	FLANGE	FLANSCH	FLASQUE
0604	5-102422	FLANGIA 6 petali			
0605	4-103765	BARRA	BAR	STANGE	BARRE
0606	441286	RILEVATORE	SIGNAL TRACER	AUFNEHMER	MESUREUR
0607	4-107023	BIELLA 6 petali	ROD		
0607	4-100014	BIELLA 5 petali	ROD		

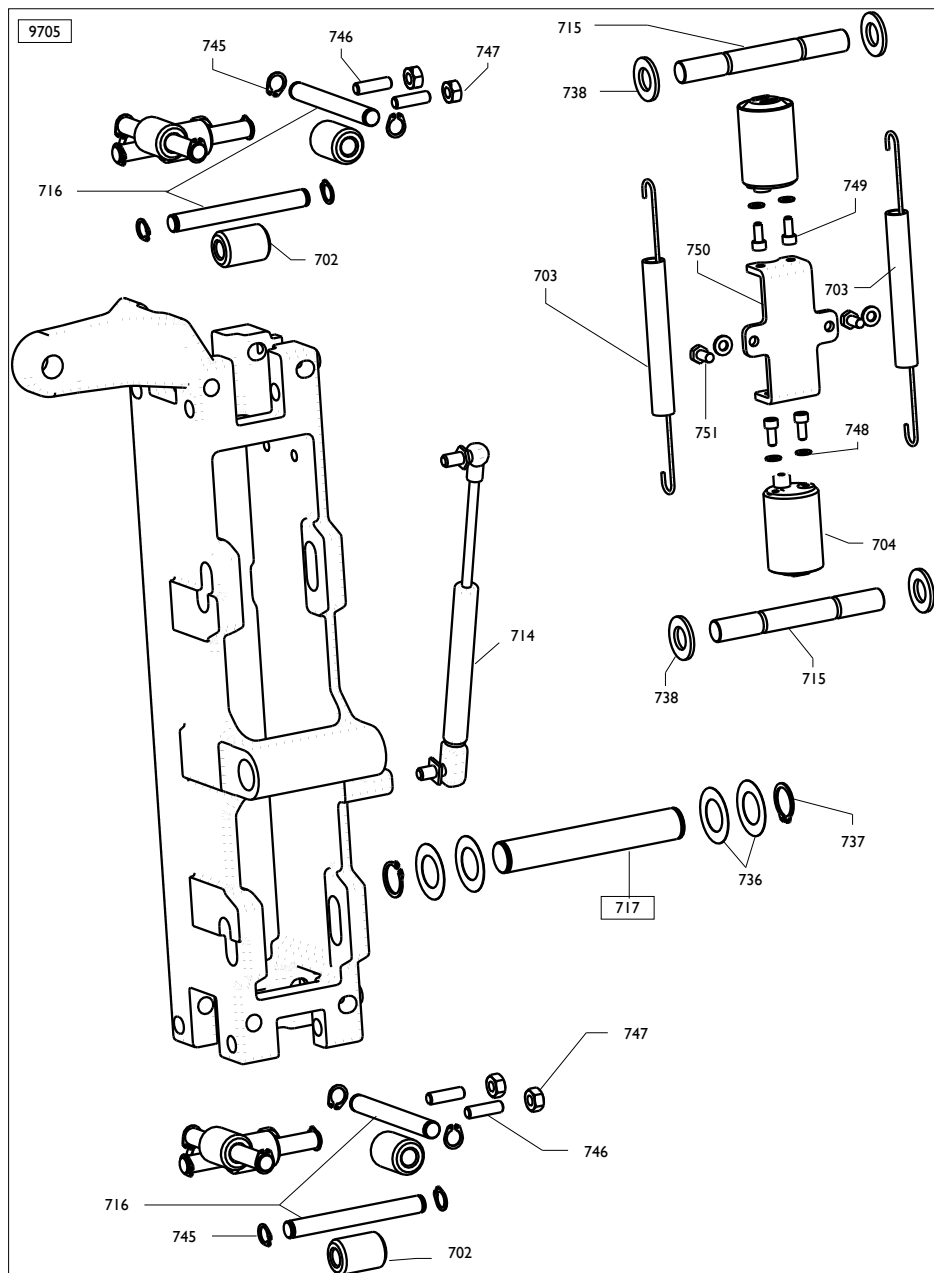




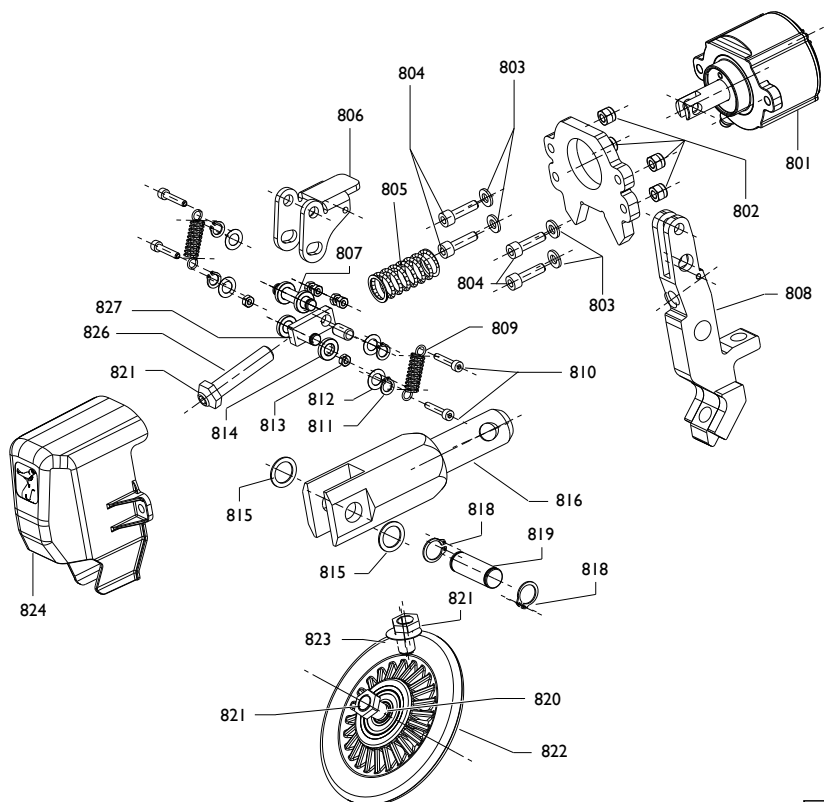
0606	441286	RILEVATORE	SIGNAL TRACER	AUFNEHMER	MESEUREUR
0608	463843	COLONNETTA 5 PETALI		STUD	
0608	5-102720	COLONNETTA 6 PETALI		STUD	
0609	2-71769	VITE	SCREW	SCHRAUBE	VIS
0610	5-100009	SET FLANGIA 5 PETALI	FLANGE SET	FLANSCH	FLASQUE
0610	5-102421	SET FLANGE 6 PETALI	FLANGE SET	FLANSCH	FLASQUE
0611	4-102377	GHIERA	NUT	NUTMUTTER	BAGUE
0612	463842	COL.CON SERRAGG.5PETALI		STUD	
0612	5-102721	COL.CON SERRAGG.6PETALI		STUD	
0613	4-107024	BIELLA 6 PETALI		STUD	
0613	4-101229	BIELLA 5 PETALI		STUD	



		Artiglio 50	Stallonatore	TAV. H - 01 / 12	
0760	4-103791	MOLLA	SPRING		
0761	3-02164	TAPPO	PLUG		
9703	5-101223	MANIGLIA CPL.	HANDLE		
0753	4-104906	LAMIERA	PLATE		
0754	2-00297	VITE	SCREW		
0755	2-00210	RONDELLA	WASHER		
9701	5-101221	CILINDRO	CYLINDER	ZYLINDER	CYLINDRE
0705	3-00059	RACCORDO	CONNECTOR	ANSCHLUSS	RACCORD
0706	3-00055	RACCORDO	CONNECTOR	ANSCHLUSS	RACCORD
0770	5-104739	FLANGIA	FLANGE	FLANSCH	FLASQUE
0708	363627	FLANGIA	FLANGE	FLANSCH	FLASQUE
0742	4-103787	STELO	ROD		
0743	4-103486	CAMICIA	LINER		
0744	457194	TIRANTE	SCREW		
9702	261436	PISTONE	PISTON	KOLBEN	PISTON
0748	2-00210	RONDELLA	WASHER		
0769	2-00853	VITE	SCREW		
0720	4-103783	PIASTRA	SLAB	PLAETTCHEN	PLAQUE
0721	4-103782	MOLLA	SPRING	FEDER	RESSORT
0722	4-103775	PERNO	PIN	ZAPFEN	PIVOT
0723	4-103778	PERNO	PIN	ZAPFEN	PIVOT
0724	4-103565	CARTER	SHIELD	ABDECKUNG	PROTECTION
0725	2-02902	VITE	SCREW		
0726	2-01225	VTE	SCREW		
0727	218216	RONDELLA	WASHER		
0728	4-103771	DISTANZIALE	SPACER		
0729	360474	RONDELLA	WASHER		
0730	4-104915	PIATTO AGG. SUP	PLATE		
0731	4-104893	PATTO AGG.INF.	PLATE.		
0732	4-103779	ATTACCO CILINDRO	SUPPORT		
0733	4-104892	GUIDA	GUIDE		
0735	4-103780	BARRA ESAGONALE	BAR	ARM	
0762	5-101067	BRACCIO TALLONATORE			
0763	2-01291	VITE	SCREW		
0764	2-00157	DADO	NUT		
0765	2-71333	VITE	SCREW		
0766	344207	RONDELLA	WASHER		
0767	2-01989	VITE	SCREW		
0768	2-00211	RONDELLA	WASHER		
0769	2-02132	VITE	SCREW		

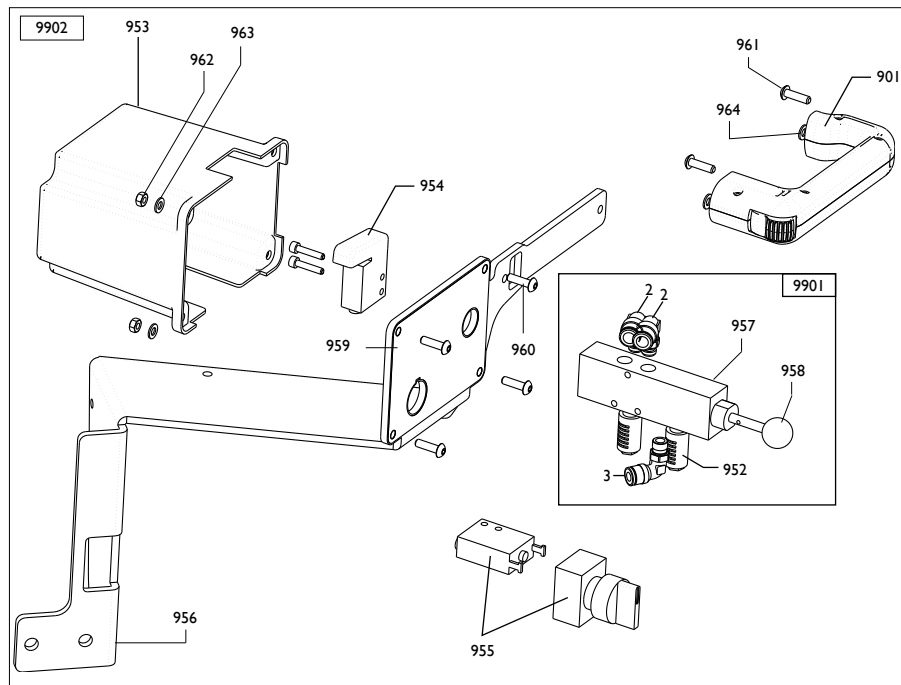


9705	5-103186	SCORREVOLE CPL.	ARM		
0702	361396	RULLO	ROLLER	WALZE	ROULEAU
0703	4-103773	MOLLA	SPRING	FEDER	RESSORT
0704	244969	CILINDRO	CYLINDER	ZYLINDER	CYLINDRE
0714	4-103785	MOLLA	SPRING	FEDER	RESSORT
0715	4-103772	PERNO	PIN	ZAPFEN	PIVOT
0716	4-103774	PERNO	PIN	ZAPFEN	PIVOT
0717	4-103777	PERNO	PIN	ZAPFEN	PIVOT
0736	436517	RONDELLA	WASHER		
0737	2-71587	ANELLO	RING		
0738	2-00215	RONDELLA	WASHER		
0739	2-01045	RONDELLA	WASHER		
0740	2-01130	ANELLO	RING		
0741	2-01122	ANELLO	RING		
0742	4-103787	STELO	ROD		
0743	4-103486	CAMICIA	LINER		
0744	457194	TIRANTE	SCREW		
0745	2-00024	ANELLO	RING		
0746	4-105509	VITE SPEC.M8	SCREW		
0747	2-00151	DADO	NUT		
0748	2-00210	RONDELLA	WASHER		
0749	2-00853	VITE	SCREW		
0750	4-103794	LAMIERA	SUPPORT		
0751	2-00360	VITE	SCREW		



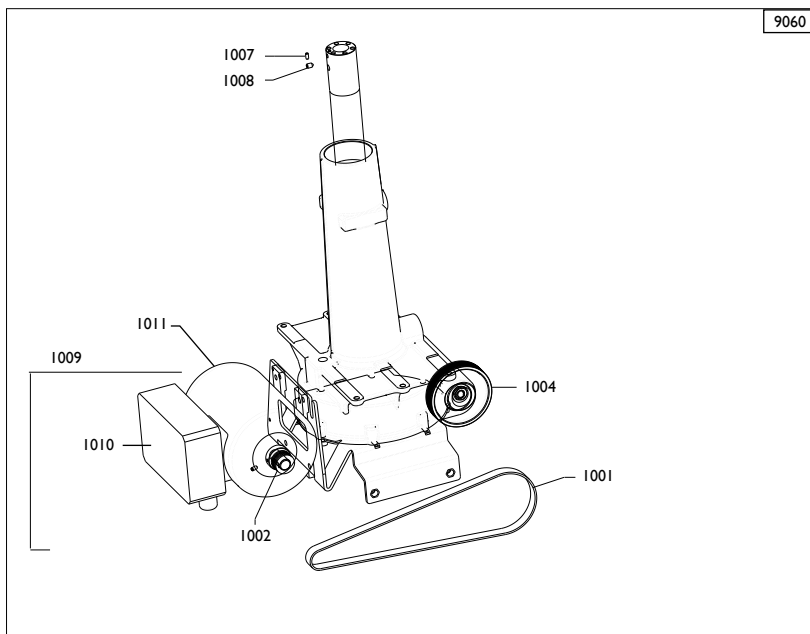
9800

9800	5-102002	DISCO STALLONATORE	DISK
0801	5-102062	CILINDRO	CYLINDER
0802	2-01257	DADO M6	NUT
0803	2-00211	RONDELLA D.6	WASHER
0804	2-00934	VITE M6X22	SCREW
0805	4-106235	MOLLA	SPRING
0806	4-106025	LAMIERA DI BLOCCO	PLATE
0807	4-106224	PERNO	PIN
0808	4-106181	SUPPORTO DISCO	SUPPORT
0809	4-106238	MOLLA	SPRING
0810	2-00927	VITE 4X22	SCREW
0811	2-00021	SEEGER D.8	SEEGER
0812	301694	RONDELLA D.14X8X0,2	WASHER
0813	2-00143	DADO M4	NUT
0814	339856	RONDELLA D.8,25X15X3	WASHER
0815	435005	RONDELLA D.15X21X1	WASHER
0816	4-105853	BARRA ESAGONALE	BAR
0818	2-00026	SEEGER D.14	SEEGER
0819	4-103723	PERNO	PIN
0820	4-106180	PERNO PORTARULLO	PIN
0821	4-106024	DADO SPECIALE M12	NUT
0822	5-100688	DISCO	DISC
0823	2-02096	VITE M12X20	SCREW
0824	4-106016	CARTER PENETRAZIONE	CASING
0826	2-02398	VITE M12X60	SCREW
0827	4-106199	BIELLA	ROD

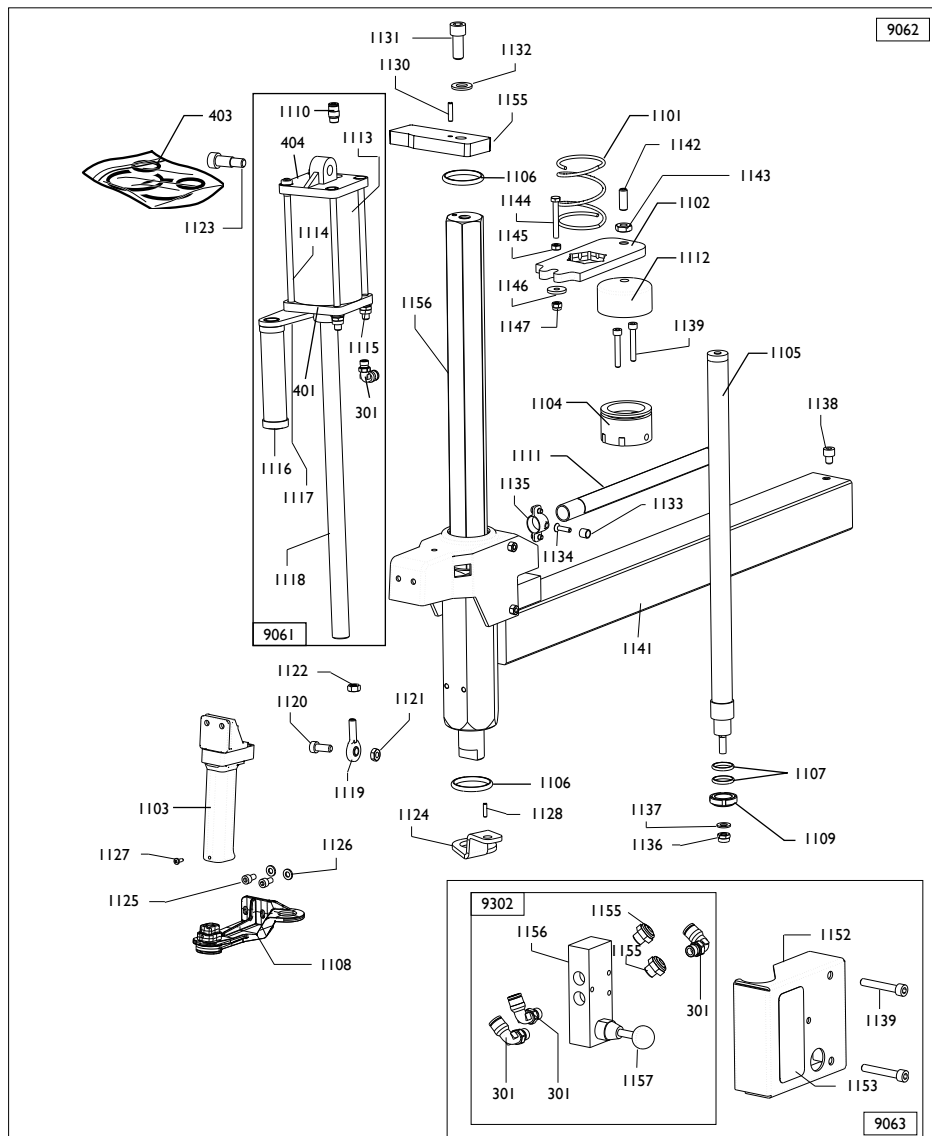


9902	5-102041	PULSANTIERA CPL.	BUTTONS		
0901	5-101632	MANIGLIA	HANDLE	HANDGRIFF	POIGNEE
0953	4-103563	COPERCHIO	LID	DECKEL	COUVERCLE
0954	3-02125	VALVOLA	VALVE	VENTIL	VANNE
0955	5-102724	BLOCCAGGIO	LOCKING	SPERRE	BLOCAGE
0956	5-103902	LAMIERA	SUPPORT		
0959	4-103803	ADESIVO PULSANTI	LABEL		
0960	2-03048	VITE	SCREW		
0961	2-80003	VITE	SCREW		
0962	2-00144	DADO	NUT		
0963	2-00210	RONDELLA	WASHER		
0964	2-00209	RONDELLA	WASHER		
9901	5-102725	VALVOLA PNEUM.	PNEUM. VALVE	PNEUM. VENTILE	PANNE PNEUM.
0002	3-00049	RACCORDO	CONNECTOR	ANSCHLUSS	RACCORD
0003	3-00218	RACCORDO	CONNECTOR	ANSCHLUSS	RACCORD
0952	3-00183	SILENZIATORE	SILENCER	SCHALLDAEMPFER	SILENCIEUX
0957	3-01642	VALVOLA	VALVE		
0958	3-03029	POMOLO	HANDLE		



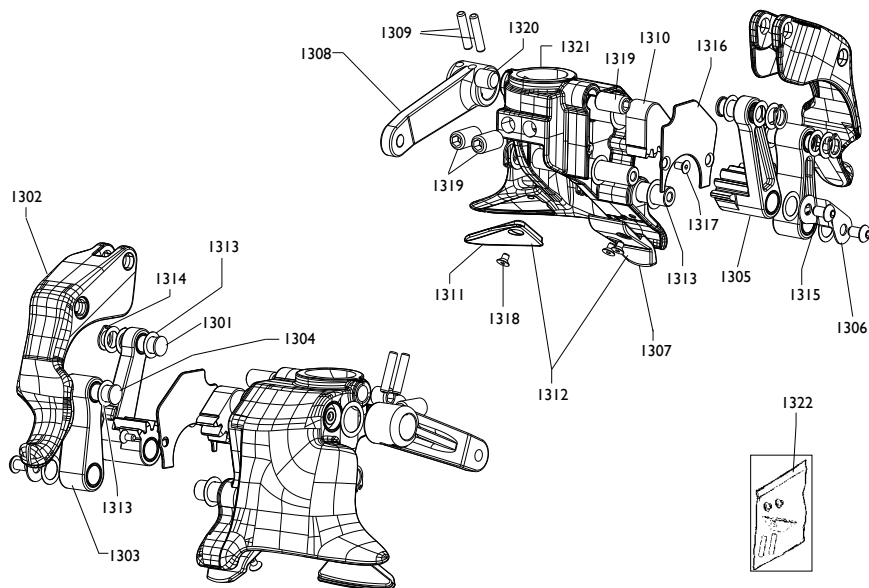


9060	5-104041	RIDUTTORE 230V	GEAR BOX 230V	GETRIEBE 230V
9060	5-104042	RIDUTTORE 115V	GEAR BOX 115V	GETRIEBE 115V
1001	3-01649	CINGHIA 50/60 HZ		BELT
1002	4-104329	PULEGGIA MOTORE 50/60HZ		PULLEY
1010	4-115395	SCHEDA MOTORE 230V		P.C. BOARD 230V
1010	4-111585	SCHEDA MOTORE 115V		P.C. BOARD 115V
1004	354082	PULEGGIA		PULLEY
1007	2-00850	GRANO M5x10		SCREW
1008	2-71364	GRANO M8x12		SCREW
		MOTORE+INVERTER +CAVI		MOTOR+REV.+CABLES
1009	5-104966	200-230V 1P <sub>H</sub> 50-60Hz		
1011	4-113412	MOTORE 230V(SENZASCHEDA)		
1009	5-103599	115V 1P <sub>H</sub> 60 Hz		

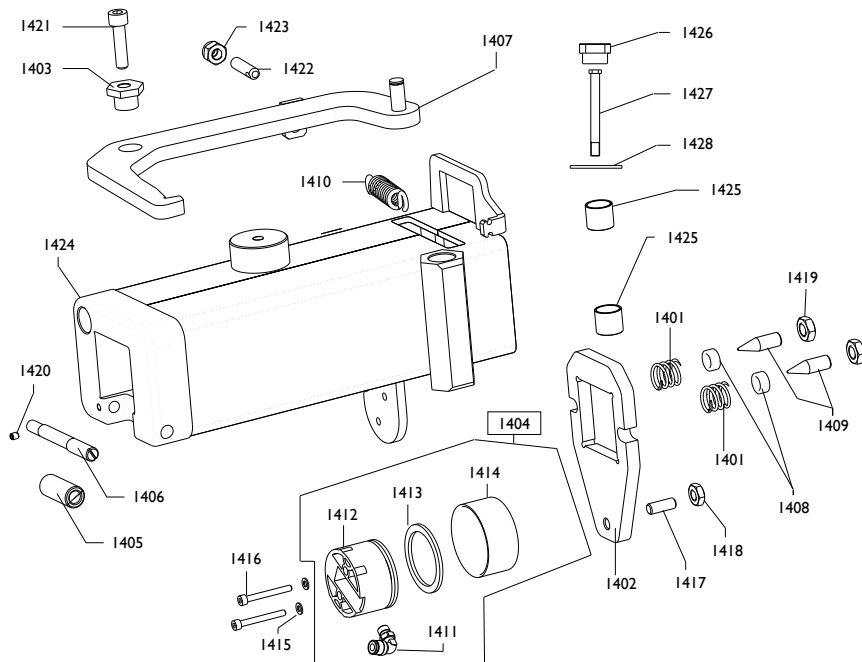


9062	5-101253	BRACCIO ORIZ,CPL	CPL. ARM		
0403	262382	KIT GUARNIZIONI	SEALS KIT		
1101	4-103898	MOLLA	SPRING	DICHTUNGSATZ	KIT JOINTS
1102	4-103899	PIASTRA	SLAB	FEDER	RESSORT
1103	5-101479	RUBINETTO	VALVE	PLATTE	PLAQUE
1104	5-101254	PISTONE	PISTON	HAHN	ROBINET
1105	4-103895	CILINDRO	CYLINDER	KOLBEN	PISTON
				ZYLINDER	CYLINDRE

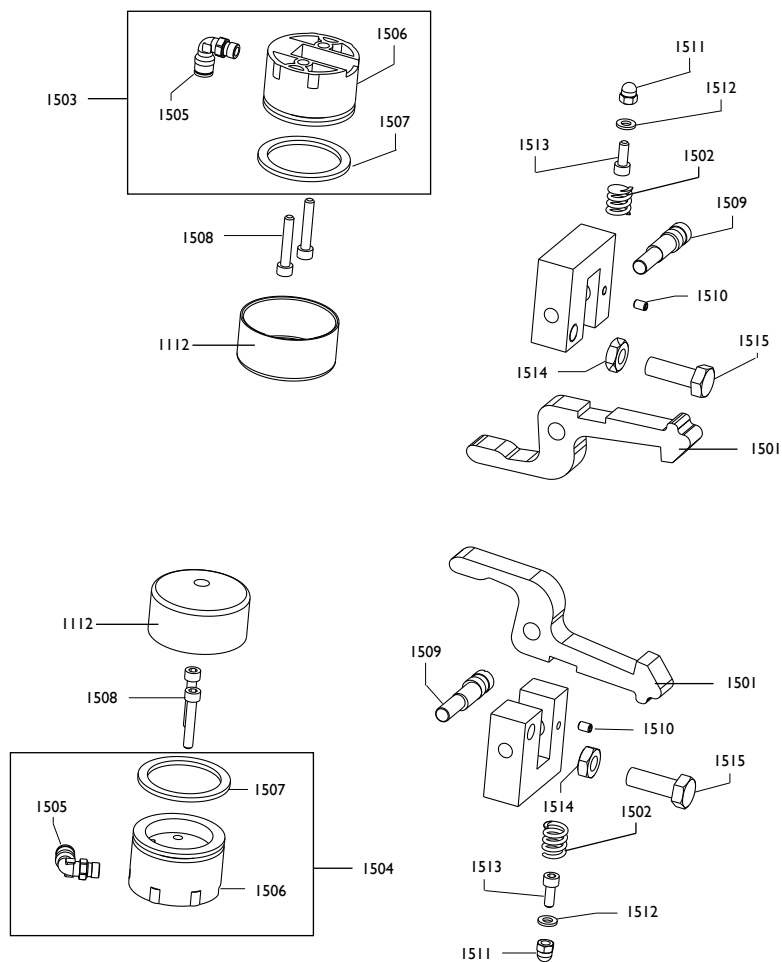
I106	444613	GUARNIZIONE	SEAL	DICHTUNG	JOINT
I107	441728	GUARNIZIONE	SEAL	DICHTUNG	JOINT
I108	5-101564	SUPPORTO	SUPPORT	LAGER	SUPPORT
I109	440946	GHIERA	NUT	NUTMUTTER	BAGUE
I110	3-00461	RACCORDO	CONNECTOR	ANSCHLUSS	RACCORD
I111	4-103887	TUBO GUIDA	PROTECTION		
	4-103901	ADESIVO	STICK		
I112	326537	CILINDRO	CYLINDER	ZYLINDER	CYLINDRE
9063	5-101255	GR.VALVOLA S/M	VALVE		
I139	2-00314	VITE	SCREW		
I152	4-103903	LAMIERA	SUPPORT		
I153	4-103904	ADESIVO	LABEL		
9302	5-102723	VALVOLA	VALVE	VENTIL	VANNE
0301	3-00053	RACCORDO	CONNECTOR	ANSCHLUSS	RACCORD
1155	3-00181	SILENZIATORE	SILENCER		
1156	3-00374	VALVOLA	VALVE		
1157	3-00711	POMOLO	HANDLE		
9061	5-101277	CILINDRO	CYLINDER	ZYLINDER	CYLINDRE
0404	361975	FLANGIA	FLANGE	FLANSCH	FLASQUE
0301	3-00053	RACCORDO	CONNECTOR	ANSCHLUSS	RACCORD
0401	361519	FLANGIA	FLANGE	FLANSCH	FLASQUE
I113	4-106258	CAMICIA	LINER		
I114	4-106257	TIRANTE	BOLT		
I115	2-00212	DADO	NUT		
I116	4-104722	MANOPOLA	HANDLE		
I117	4-104224	ATTAC.MANIGLIA	SUPPORT		
I118	4-103981	STELO	ROD		
I119	2-03391	TERMINALE	SCREW		
I120	2-02301	VITE	SCREW		
I121	2-91680	DADO	NUT		
I122	2-00723	DADO	NUT		
I123	4-103906	VITE	SCREW		
I124	4-103893	LAMIERA	SUPPORT		
I125	2-02817	VITE	SCREW		
I126	2-00211	RONDELLA	WASHER		
I127	2-02887	VITE	SCREW		
I128	2-00973	SPINA	SPIROL		
1155	4-115295	ATT.CILINDRO	SUPPORT		
I130	2-01058	SPINA	SPIROL		
I131	2-80101	VITE	SCREW		
I132	2-00214	RONDELLA	WASHER		
I133	4-103897	DISTANZIALE	SPACER		
I134	2-01053	VITE	SCREW		
I135	3-01656	COLLARE	PLUG		
I136	2-01137	DADO	NUT		
I137	2-00212	RONDELLA	WASHER		
I138	383372	FERMO	STOP		
1156	4-115297	ASTA	ROD		
I141	4-107720	BRACCIO	ARM		
I142	2-02586	VITE	SCREW		
I143	2-00157	DADO	NUT		
I144	2-00367	VITE	SCREW		
I145	2-01257	DADO	NUT		
I146	320574	RONDELLA	WASHER		
I147	2-01257	DADO	NUT		



9550	5-102266	TORRETTA	HEAD	DREHKOPF	TOURELLE
1301	4-103933	PERNO	PIN	ZAPFEN	PIVOT
1302	4-103266	GANCIO	HOOK	HAKEN	CROCHET
1303	5-101265	BIELLA	TRACE	PLEUELSTANGE	BIELLE
1304	4-103932	PERNO	PIN	ZAPFEN	PIVOT
1305	5-101266	BIELLA	TRACE	PLEUELSTANGE	BIELLE
1306	4-104981	LAMIERA	METAL SHEET	BLECH	TOLE
1307	4-103502	INSERTO	INSERT	EINLAGE	INSERT
1308	4-103256	LEVA	LEVER	HEBEL	LEVIER
1309	2-71581	SPINA	PLUG	STECKER	FICHE
1310	4-103264	INGRANAGGIO	GEAR	ZAHNRADGETRIEBE	ENGRENAGE
1311	4-106611	INSERTO	INSERT		
1312	5-102468	KIT INSERTI	KIT INSERTS		
1313	315274	RONDELLA	WASHER		
1314	2-00025	ANELLO	RING		
1315	2-02569	VITE	SCREW		
1316	4-106610	COPERTURA	CAP		
1317	2-72205	VITE	SCREW		
1318	2-03438	VITE	SCREW		
1319	2-02096	GRANO	SCREW		
1320	2-01040	GRANO	SCREW		
1321	4-106638	TORRETTA+PERNI	TOOL		
1322	5-102468	KIT PROTEZ.PLASTICA	PRETECTIONS		

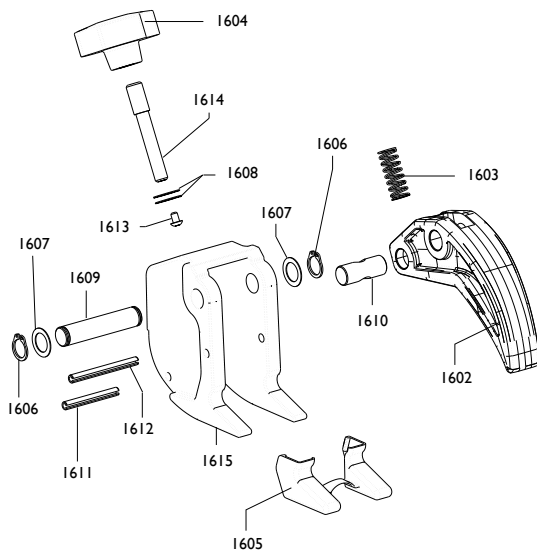
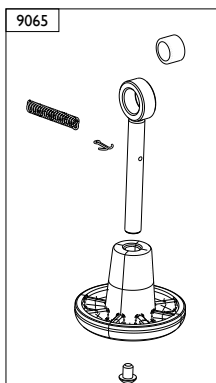


1401	439787	MOLLA	SPRING	FEDER	RESSORT
1402	4-102005	PIASTRA	SLAB	PLATTE	PLAQUE
1403	4-103907	ECCENTRICO	EXCENTRIC	NOCKEN	EXCENTRIQUE
1404	5-101258	PISTONE	PISTON	KOLBEN	PISTON
1411	3-01181	RACCORDO	CONNECTOR		
1412	443077	PISTONE	PISTON		
1413	443078	GUARNIZIONE	GASKET		
1414	326537	CILINDRO	CYLINDER		
1405	4-102007	RULLO	ROLLER	WALZE	ROULEAU
1406	4-102006	ECCENTRICO	EXCENTRIC	NOCKEN	EXCENTRIQUE
1407	4-103985	GANCIO	HOOKE		
1408	339803	BOCCOLA	BUSHING	LAGER	DOUILLE
1409	341836	VITE	SCREW	SCHRAUBE	VIS
1410	4-104011	MOLLA	SPRING		
1415	2-00210	RONDELLA	WASHER		
1416	2-02132	VITE	SCREW		
1417	2-01291	VITE	SCREW		
1418	2-00157	DADO	NUT		
1419	2-00158	DADO	NUT		
1420	2-01907	VITE	SCREW		
1421	2-80019	VITE	SCREW		
1422	4-103989	PERNO	PIN		
1423	2-01019	DADO	NUT		
1424	5-101170	SUPPORTO BRACCIO+BOCCOLE		SUPPORT	
1425	3-80100	BOCCOLA	BUSHING		
1426	4-103703	ECCENTRICO	WAY-OUT		
1427	4-103704	PERNO BR.ORIZZ.	PIN		
1428	4-103705	LAMIERA FERMO ECC.		PLATE	



I112	326537	CILINDRO	CYLINDER	ZYLINDER	CYLINDRE
I501	4-104869	GANCIO	HOOK	HAKEN	CROCHET
I502	4-104890	MOLLA	SPRING	FEDER	RESSORT
I503	5-101580	PISTONE SUP.	PISTON	KOLBEN	PISTON
I504	5-101581	PISTONE INF.	PISTON	KOLBEN	PISTON
I505	3-00220	RACCORDO	CONNECTOR		
I506	443077	PISTONE	PISTON		
I507	443078	GUARNIZIONE	GASKET		
I508	2-01266	VITE	SCREW		
I509	4-104870	PERNO ECCENTRICO	PIN		
I510	2-00543	VITE	SCREW		
I511	2-00104	DADO	NUT		
I512	2-00210	RONDELLA	WASHER		
I513	2-02037	VITE	SCREW		
I514	2-91640	DADO	NUT		
I515	2-01225	VITE	SCREW		

9064

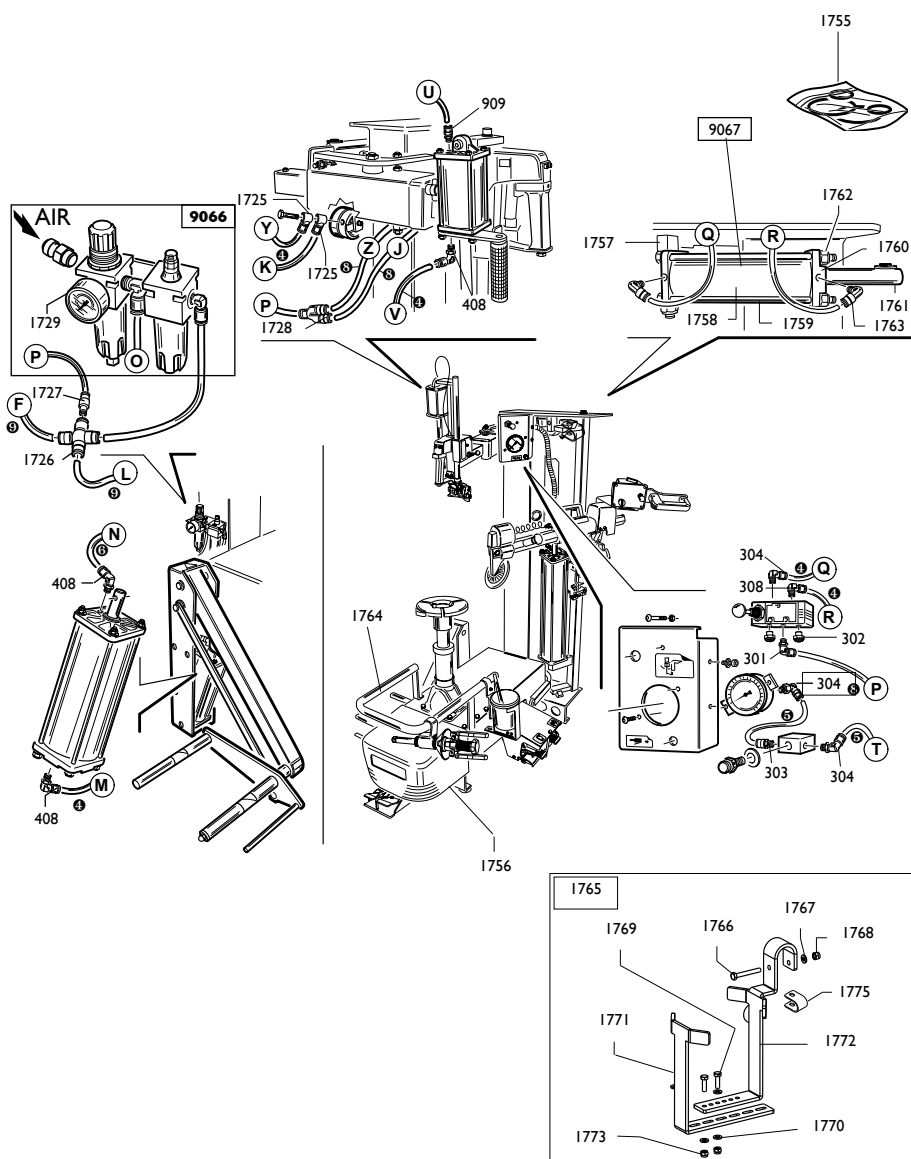




9064	8-11100120	MORSETTO	TERMINAL	KLEMME	BORNE
9065	5-101642	KIT TRASFORM.	TRANSFORM. KIT	VERWANDLUNGS.	KIT TRANSFORM.
1602	4-104051	DITO	U-BOLT	BUEGELBOLZEN	CRAMPILLON
1603	3-01760	MOLLA	SPRING	FEDER	RESSORT
1604	3-01715	VOLANTINO	HANDWHEEL	HANDRAD	PETIT VOLANT
1605	8-11100126	KIT 6 PROTEZIONI	SHIELD	ABDECKUNG	PROTECTION
1606	2-00025	SEEGER	SEEGER		
1607	315274	RONDELLA	WASHER		
1608	309358	RONDELLA	WASHER		
1609	4-104271	PERNO	PIN		
1610	4-104258	PERNO	PIN		
1611	2-71566	SPINA	SPIROL		
1612	2-02219	SPINA	SPIROL		
1613	2-02152	VITE	SCREW		
1614	4-104259	PERNO	PIN		
1615	4-104235	CORPO	BODY		



0002	3-00049	RACCORDO	CONNECTOR	ANSCHLUSS	RACCORD
0003	3-00218	RACCORDO	CONNECTOR	ANSCHLUSS	RACCORD
0705	3-00107	RACCORDO	CONNECTOR	ANSCHLUSS	RACCORD
0706	3-00055	RACCORDO	CONNECTOR	ANSCHLUSS	RACCORD
1700	3-00220	RACCORDO	CONNECTOR	ANSCHLUSS	RACCORD
1701	3-00023	RACCORDO	CONNECTOR	ANSCHLUSS	RACCORD
1702	3-00150	RACCORDO PNEUM.	PNEU.CONNECTION	PNEUM. ANSCHE.	RACCORD.PNEUM.
1703	3-00020	RACCORDO	CONNECTOR	ANSCHLUSS	RACCORD
1704	3-00238	RACCORDO PNEUM.	PNEU.CONNECTION	PNEUM. ANSCHE.	RACCORD.PNEUM.
1705	3-00183	SILENZIATORE	SILENCER	SCHALLDAEMPFER	SILENCIEUX
1706	3-01645	RACCORDO	CONNECTOR		
1707	3-01644	RACCORDO	CONNECTOR		
1708	3-00463	RACCORDO	CONNECTOR		
1709	3-00048	RACCORDO	CONNECTOR		
1710	3-00209	RACCORDO	CONNECTOR		
❶	4-103910	TUBO a spirale	PIPE		
❷	5-101196	TUBO gonggiaggio	PIPE		
❸	1-04035	TUBO 4x1 nero	PIPE 4x1 black	(max 1700 m)	
❹	1-01684	TUBO 6x1 nero	PIPE 6x1 black	(max 1500 m)	
❺	1-01683	TUBO 8x1 nero	PIPE 8x1 black	(max 2400 m)	
❻	1-04036	TUBO 6x1 giallo	PIPE 6x1 yellow	(max 1000 m)	
❼	1-03471	TUBO 4x1 rosso	PIPE 4x1 red	(max 1500 m)	
❽	1-04001	TUBO 6x1 rosso	PIPE 6x1 red	(max 1350 m)	
❾	1-04000	TUBO 8x1 rosso	PIPE 8x1 red	(max 2300 m)	

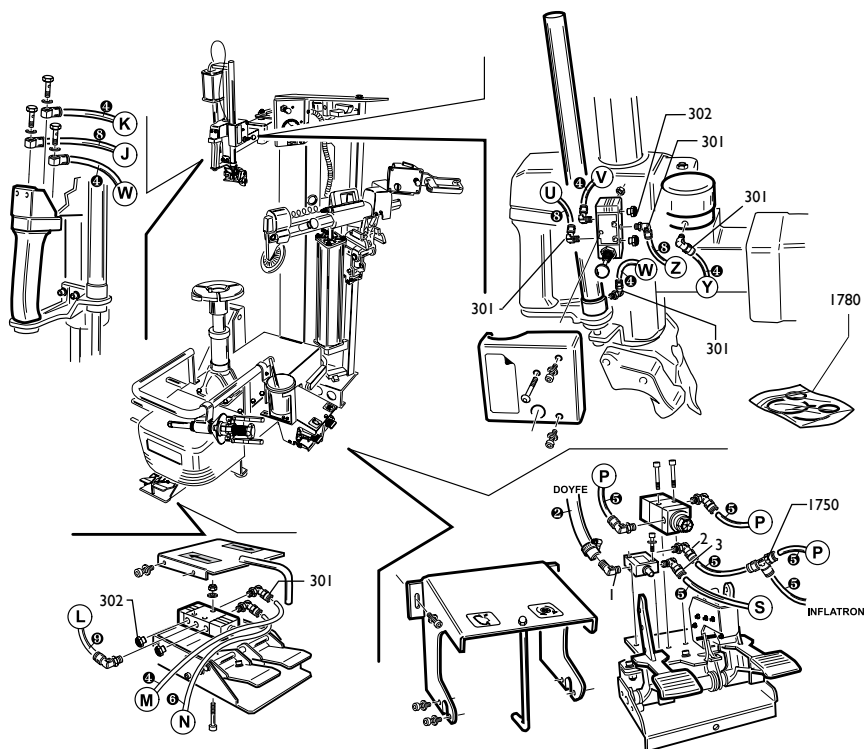



0408	5-102686	RACC.+STROZZ.D.I.75	CONNECTOR		
0301	3-00053	RACCORDO	CONNECTOR	ANSCHLUSS	RACCORD
0302	3-00181	SILENZIATORE fili acciaio		SILENCER	
0303	3-00459	RACCORDO	CONNECTOR	ANSCHLUSS	RACCORD
0304	5-102687	RACC.+STROZZ.D.I	CONNECTOR		
0308	5-102688	RACC.+STROZZ.D.0.8	CONNECTOR		
1110	3-00461	RACCORDO	CONNECTOR	ANSCHLUSS	RACCORD
1725	3-01181	RACCORDO PNEUM.	PNEU.CONNECTION	PNEUM. ANSCHE.	RACCORD.PNEUM.
1726	3-00021	RACCORDO	CONNECTOR	ANSCHLUSS	RACCORD
1727	3-00209	RACCORDO	CONNECTOR	ANSCHLUSS	RACCORD
1728	3-00047	RACCORDO	CONNECTOR	ANSCHLUSS	RACCORD
1750	3-00025	RACCORDO	CONNECTOR	ANSCHLUSS	RACCORD
1755	5-101641	KIT GUARNIZIONI			
1756	4-103528	COPERTURA	SHIELD	FEDER	RESSORT
1764	4-105965	TUBO MULTIFUNZIONE		PROTECTION	
1765	5-101236	ATTACCO IKG	ADAPTOR IKG	HALTERUNG IKG	ATTAQUE IKG
1766	2-02802	VITE	SCREW		
1767	2-00212	RONDELLA	WASHER		
1768	2-01020	DADO	NUT		
1769	2-02339	VITE	SCREW		
1770	2-00211	RONDELLA	WASHER		
1771	4-103832	LAMIERA	PROTECTION		
1772	4-103831	LAMIERA FERMO	PRETECTION		
1773	2-00309	VITE	SCREW		
1774	2-01257	DADO	NUT		
1775	4-102642	ADATT.PORTA GRASSO		SUPPORT	

9066	462929	FILTRO	FILTER	FILTER	FILTRE
1729	3-00488	MANOMETRO	PRESSURE GAUGE	DRUCKMESSER	MANOMETRE

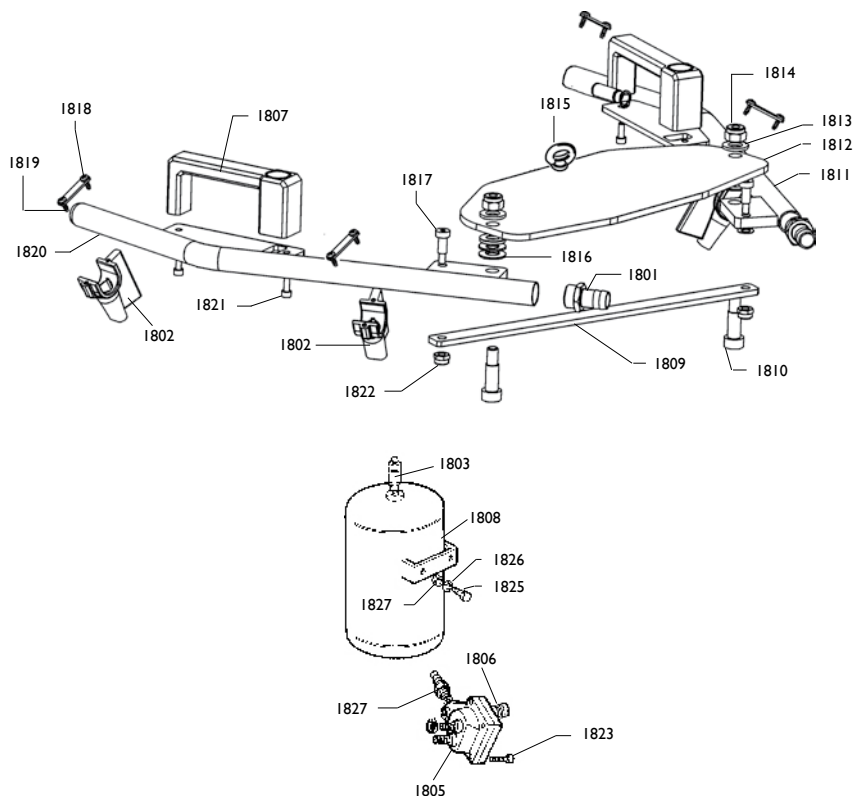
9067	5-101237	CILINDRO	CYLINDER	ZYLINDER	CYLINDRE
1757	356480	FLANGIA POST.	FLANGE		
1758	4-103837	CAMICIA	LINER		
1759	4-103838	TIRANTE	BOLT		
1760	356491	FLANGIA ANT.	FLANGE		
1761	4-103839	STELO	ROD		
1762	2-01020	DADO	NUT		

1763	3-00053	RACCORDO	CONNECTOR		
①	4-103910	TUBO a spirale	PIPE		
②	5-101196	TUBO gongaggio	PIPE		
③	1-04035	TUBO 4x1 nero	PIPE 4x1 black	(max 1700 m)	
④	1-01684	TUBO 6x1 nero	PIPE 6x1 black	(max 1500 m)	
⑤	1-01683	TUBO 8x1 nero	PIPE 8x1 black	(max 2400 m)	
⑥	1-04036	TUBO 6x1 giallo	PIPE 6x1 yellow	(max 1000 m)	
⑦	1-03471	TUBO 4x1 rosso	PIPE 4x1 red	(max 1500 m)	
⑧	1-04001	TUBO 6x1 rosso	PIPE 6x1 red	(max 1350 m)	
⑨	1-04000	TUBO 8x1 rosso	PIPE 8x1 red	(max 2300 m)	



	Artiglio 50	Giro tubi	TAV.T3 - 05a / 06
--	-------------	-----------	-------------------

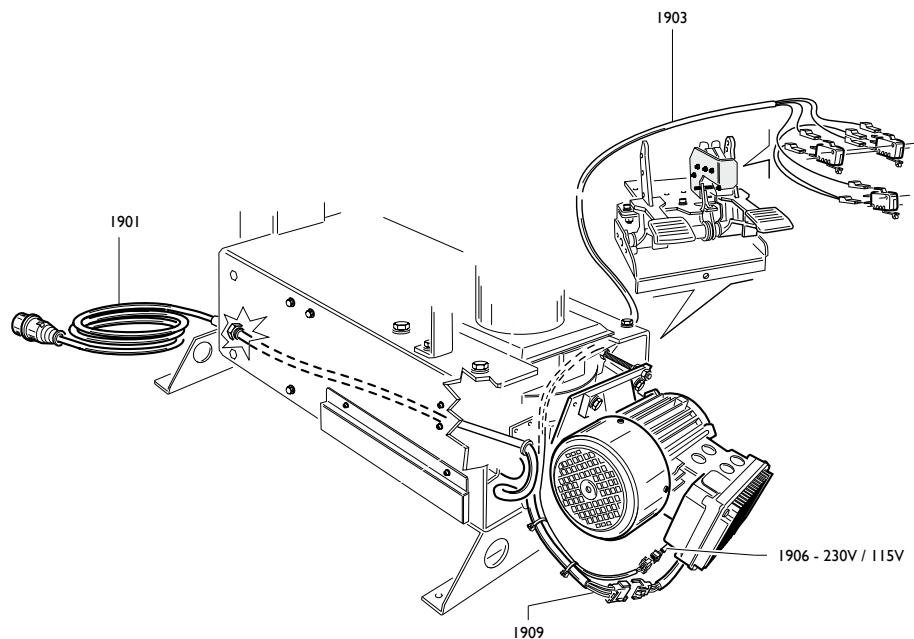
0001	3-01176	RACCORDO	CONNECTOR	ANSCHLUSS	RACCORD
0002	3-00049	RACCORDO	CONNECTOR	ANSCHLUSS	RACCORD
0003	3-00218	RACCORDO	CONNECTOR	ANSCHLUSS	RACCORD
0301	3-00053	RACCORDO	CONNECTOR	ANSCHLUSS	RACCORD
0302	3-00181	SILENZIATORE fili acciaio		SILENCER	
1750	3-00025	RACCORDO	CONNECTOR	ANSCHLUSS	RACCORD
1780	5-102951	KIT ADESIVI	LABEL KIT		
❶	4-103910	TUBO a spirale	PIPE		
❷	5-101196	TUBO gonggiaggio	PIPE		
❸	1-04035	TUBO 4x1 nero	PIPE 4x1 black	(max 1700 m)	
❹	1-01684	TUBO 6x1 nero	PIPE 6x1 black	(max 1500 m)	
❺	1-01683	TUBO 8x1 nero	PIPE 8x1 black	(max 2400 m)	
❻	1-04036	TUBO 6x1 giallo	PIPE 6x1 yellow	(max 1000 m)	
❼	1-03471	TUBO 4x1 rosso	PIPE 4x1 red	(max 1500 m)	
❽	1-04001	TUBO 6x1 rosso	PIPE 6x1 red	(max 1350 m)	
❾	1-04000	TUBO 8x1 rosso	PIPE 8x1 red	(max 2300 m)	



1801	3-00008	RACCORDO RESCA G1/2-T17	CONNECTOR
1802	462124	UGELLO	NOZZLE
1803	3-00356	VALVOLA CE	CE VALVE
1803	3-00278	VALVOLA ASME	ASME VALVE
1807	5-101632	MANIGLIA	HANDLE
1809	362122	TIRANTE	BOLT
1810	2-03090	VITE M12X25	SCREW
1811	262127	BRACCIO DX	ARM
1812	362121	PIASTRA	PLATE
1813	462117	RONDELLA D.12	WASHER
1814	2-01019	DADO N.A.M10	NUT
1815	2-02109	GOLFARE M10	SCREW



I816	2-03088	MOLLA A TAZZA	SPRING
I817	2-03091	VITE M8X16	SCREW
I818	362123	PIASTRA FISSAGGIO UGELLO	PLATE
I819	2-03121	VITE M4X12	SCREW
I820	262128	BRACCIO SX	ARM
I821	2-02037	VITE M5X14	SCREW
I822	2-01257	DADON.A. M6	NUT
I823	2-94006	VITE	NUT
I824	442239	RIDUZIONE M/F	CONNECTOR
I825	2-02047	VITE	SCREW
I826	2-00212	RONDELLA	WASHER
I827	2-01020	DADO	NUT
<b><u>CE</u></b>			
I808	262215	SERBATOIO CE	TANK CE
<b><u>ASME</u></b>			
I808	5-100559	SERBATOIO ASME+VALVOLA DI SPARO	TANK ASME
I805	243203	VALVOLA DI SPARO	VALVE
I806	3-01175	VALVOLA	VALVE



1901 4-104526

CAVO ALIMENTAZIONE 115V/230V

CABLE

1903 4-101698

CAVO MICRO

CABLE

1906 4-109895

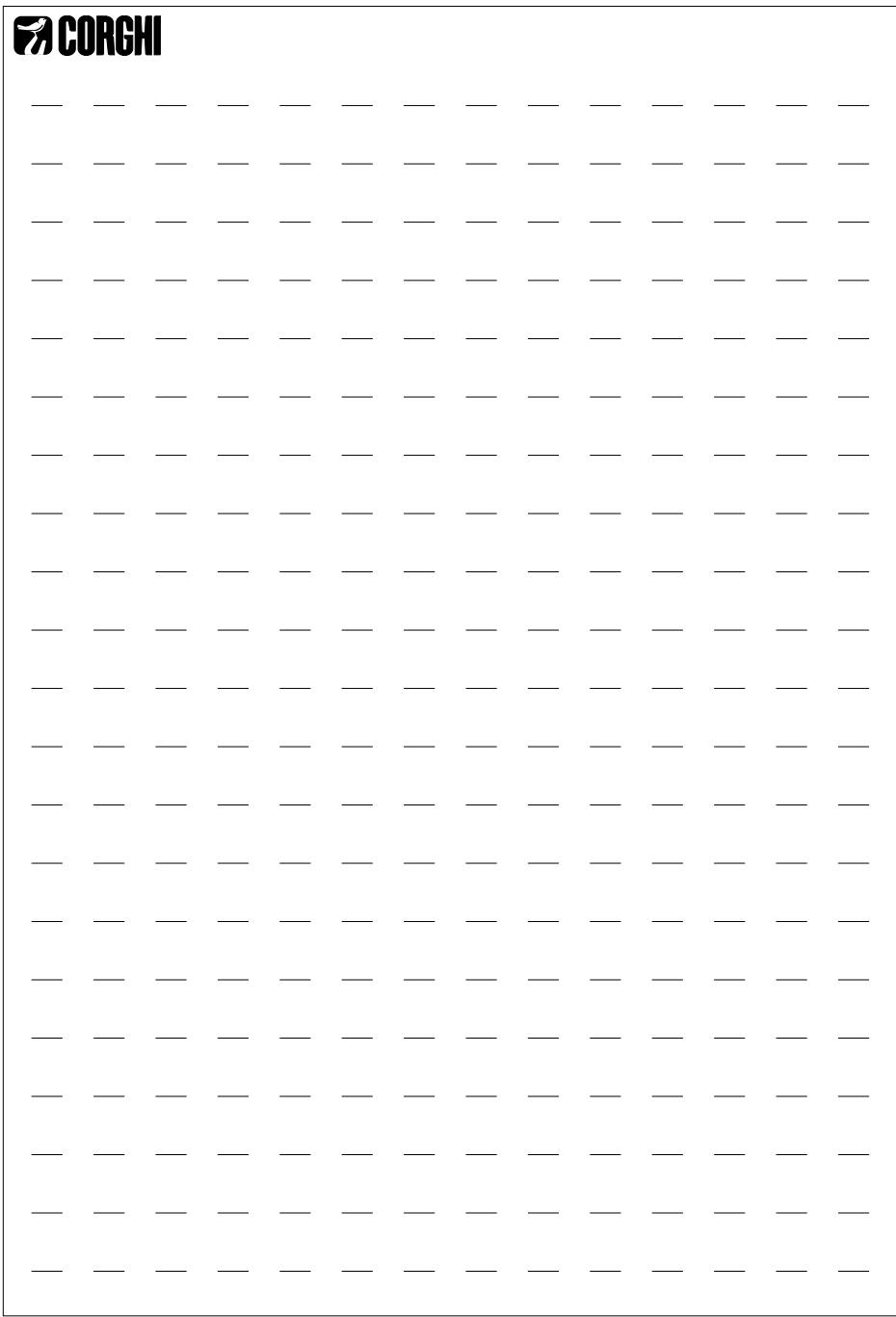
CAVO COMANDI MOTORE 230V - 115V

CABLE

1909 4-111587

CAVO ALIM. 115V/230V

CABLE



Il disegno è realizzato con tutti i particolari ma solo quelli codificati sono forniti come ricambi. L'Azienda si riserva la facoltà di apportare modifiche senza preavviso.



Via per Carpi, n°9 - 42015 Correggio (RE) ITALY  
Tel. ++39 0522 639111 - Fax ++39 0522 639150  
[www.corgi.com](http://www.corgi.com) - [info@corgi.com](mailto:info@corgi.com)

The drawing shows all parts but only the coded parts are supplied as spares. The Company reserves the right to make modifications without prior notice.