

Questo libretto non autorizza l'utente ad intervenire sulle macchine ad esclusione di quanto esplicitamente descritto nel Manuale d'uso, ma consente all'utente di fornire informazioni precise all'Assistenza tecnica, al fine di ridurre i tempi di intervento.

The "Spare parts" booklet does not authorize the user to carry out work on the machine unless expressly specified in the instruction manual, but does enable him to provide accurate information to the assistance service in order to reduce downtime.

# Artiglio

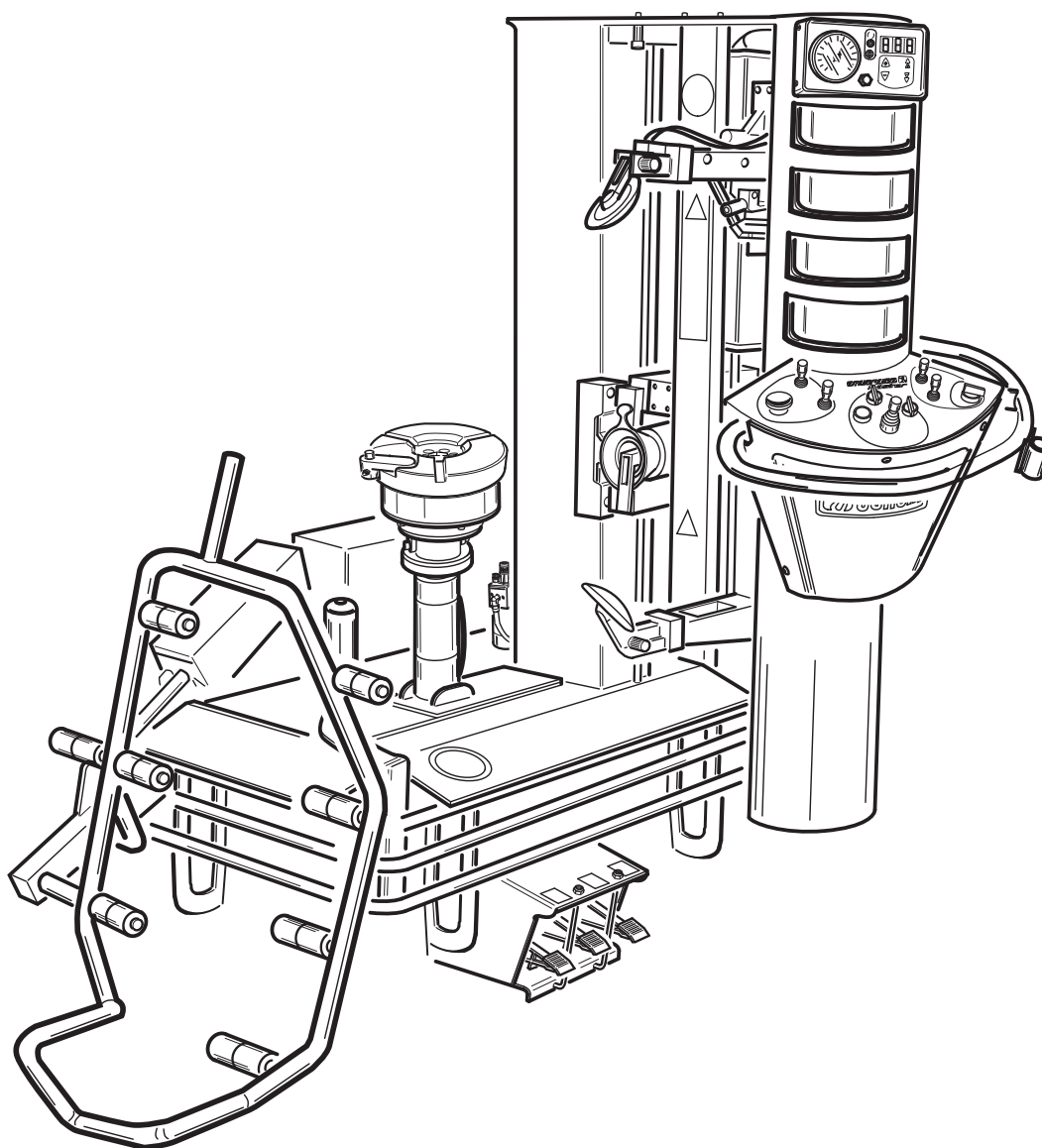
## Master 26" MI

### PEZZI DI RICAMBIO

### SPARE PARTS LIST

### ERSATZTEILLISTE

### PIECES DE RECHANGE



Code

**4-I04538H**

Production from

**04 / 2013**

Der Katalog Ersatzteile stellt keine Genehmigung zu eigenmächtigen Eingriffen dar (mit Ausnahme jener im Handbuch beschrieben), sondern er soll den Anwender in die Lage versetzen, dem technischen Service präzise Informationen zu liefern, um die Reparaturzeiten zu verkürzen.



Le livret "Pièces de rechange", n'autorise pas l'utilisateur à intervenir sur les machines, sauf pour tout ce qui est clairement décrit dans le manuel d'utilisation, mais lui permet de fournir des informations précises à l'assistance technique, afin de diminuer les délais d'intervention.



I

Sul presente documento sono stati indicati in grassetto i codici che sono variati rispetto a quelli riportati nella precedente versione del 09/12

En

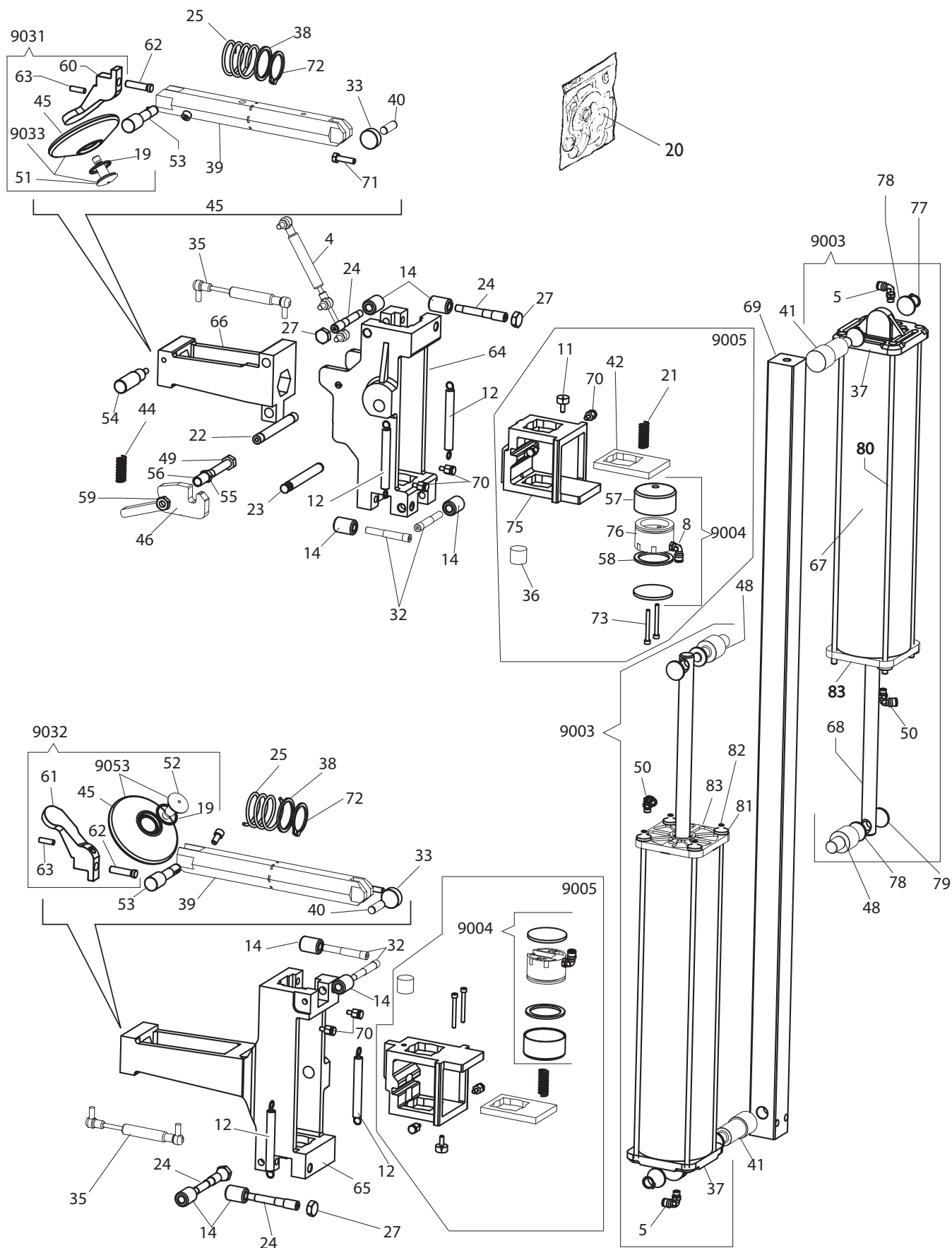
Codes that have changed from those given in the previous version dated 09/12 are indicated in bold type in this document


De

Die gegenüber der Vorgängerversion vom 09/12 geänderten Codes sind im vorliegenden Dokument fettgedruckt angegeben

Fr


Ce document reporte en gras les codes qui ont été modifiés par rapport à ceux reportés dans la version précédente du mois de 09/12



 CORGI		Artiglio Master 26" MI	Fig.A	09c / 04	Stallonatore
9031	5-100077	DISCO COMPL.			DISK
9033	5-100687	DISCO+PERNO SUP.			DISK+PIN
0019	421833	GUARNIZIONE			SEAL
0045	5-100688	RULLO			ROLLER
0051	4-100721	PERNO ANTISVIT.DX			PIN
0063	2-71768	VITE			SCREW
0060	4-100183	SUPP.DISCO SUP.			SUPPORT
9032	5-100078	DISCO COMPL.			DISK
9053	5-100686	DISCO+PERNO INF.			DISK+PIN
0019	421833	GUARNIZIONE			SEAL
0045	5-100688	RULLO			ROLLER
0052	4-100720	PERNO ANITISVIT.SX			PIN
0063	2-71768	VITE			SCREW
0061	4-100184	SUPP.DISCO INF.			SUPPORT
9003	261424	CILINDRO			CYLINDER
0005	3-00055	RACCORDO			CONNECTOR
0083	5-104739	FLANGIA			FLANGE
0037	363627	FLANGIA			FLANGE
0050	3-00059	RACCORDO			CONNECTOR
0067	361406	CAMICIA			LNER
0068	361407	STELO			ROD
0080	461408	TIRANTE			BOLT
0081	339208	RONDELLA			WASHER
0082	2-01137	DADO			NUT
9005	262261	MORSETTO CPL			CLAMP KIT
0011	461430	ANTIVIBRANTE			VIBRATION DAMPER
0021	462646	MOLLA			SPRING
0036	462713	ANTIVIBRANTE			VIBRATION DAMPER
0042	361415	STROZZATORE			THROTTLER
0075	361386	MORSETTO			CLAMP
9004	261436	PISTONE			PISTON
0008	3-00220	RACCORDO			CONNECTOR
0057	326537	CILINDRO			CYLINDER
0058	443078	GUARNIZIONE			GASKET
0073	2-71755	VITE			SCREW
0076	443077	PISTONE			PISTON

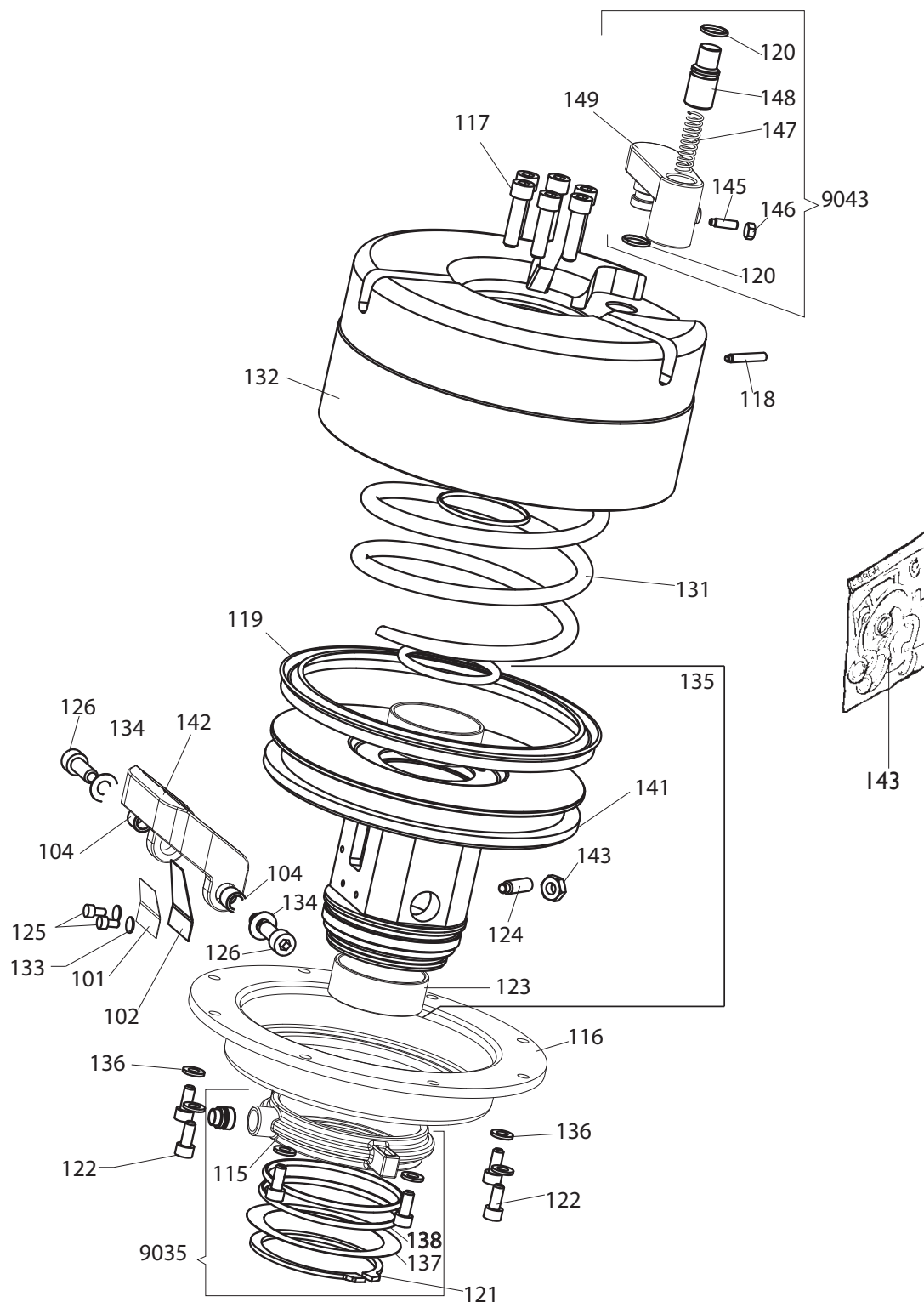
0004	461434	AMMORTIZZATORE	SHOCK ABSORB.
0012	461428	MOLLA	SPRING
0014	361396	RULLO ECCENTRICO	ROLLER
0020	245067	KIT GUARN.(9003)	SEALS KIT(9003)
0022	361422	PERNO	PIN
0023	361423	PERNO	PIN
0024	363190	ECCENTRICO M14	ECCENTRIC
0025	463167	MOLLA	SPRING
0027	2-03127	DADO	NUT
0032	363191	ECCENTRICO M10	ECCENTRIC
0033	361389	ROTELLA	WHEEL
0035	463164	AMMORTIZZATORE	SHOCK ABSORB.
0038	361395	RONDELLA	WASHER
0039	4-100182	BARRA ESAGONALE	BAR
0040	361390	PERNO	PIN
0041	361392	ATTACCO CILIND.	SUPPORT
0044	461435	MOLLA	SPRING
0046	361385	GANCIO STAL.	HOOK



	Artiglio Master 26" MI	Fig.A	09c / 04	Stallonatore
--	------------------------	-------	----------	--------------

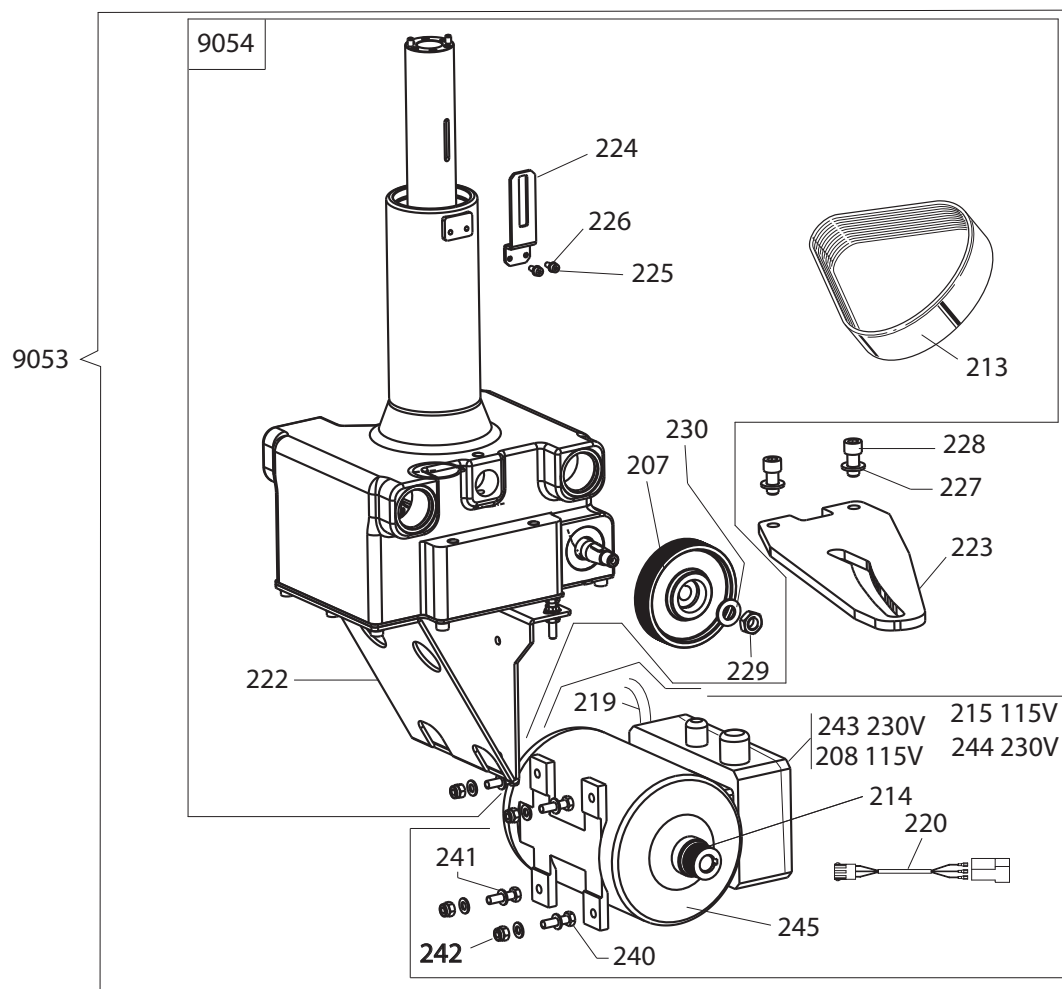
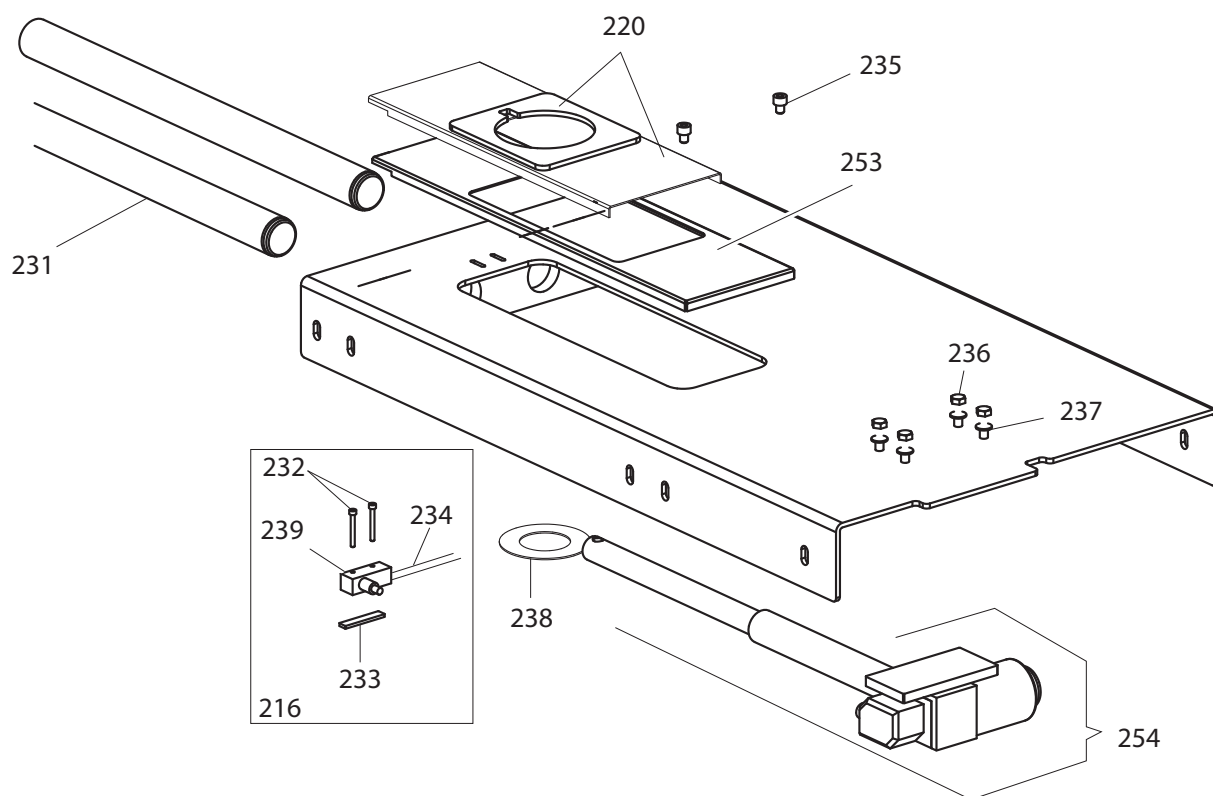
0048	361393	ATTACCO CILINDRO	ADAPTER
0049	2-01160	VITE	SCREW
0053	5-102704	PERNO	PIN
0054	4-100168	MANIGLIA	HANDLE
0055	447879	RONDELLA	WASHER
0056	361398	BOCCOLA	BUSAH
0057	326537	CILINDRO	CYLINDER
0058	443078	GUARNIZIONE	GASKET
0059	2-00158	DADO	NUT
0062	362310	REGISTRO	REGISTER
0064	361410	SUPP.MOBILE	SUPORT
0065	361412	SUPP.FISSO	SUPPORT
0066	361411	SUPP. BASCUL.	SUPPORT
0069	4-100340	GUIDA	GUIDE
0070	361391	ATTACCO MOLLA	SPRING
0071	320191	VITE TSPE M8X30	SCREW
0072	2-02131	ANELLO D.42	RING
0077	2-01130	ANELLO D.16	SEEGER D.16
0078	2-01045	RONDELLA	WASHER
0079	2-01122	ANELLO D.5	RING D.5

9041





9041	5-102705	AUTOCENTRANTE	TURNTABLE
9035	5-102706	RACCORDO	CONNECTOR
0115	4-100760	RACCORDO	CONNECTOR
0137	4-104408	RONDELLA	WASHER
0138	438689	GUARNIZIONE	GASKET
0119	433339	GUARNIZIONE	SEAL
0124	2-01322	VITE	SCREW
0141	4-106066	PISTONE	PISTON
0150	2-00156	DADO	NUT
9043	5-102707	LEVA	LEVER
0120	424630	ANELLO	RING
0145	2-02560	VITE	SCREW
0146	2-00676	DADO	NUT
0149	4-103143	LEVA	LEVER
0147	4-102331	MOLLA	SPRING
0148	4-102326	PERNO	PIN
0101	361285	BALESTRA	LEAF SPRING
0102	361279	BALESTRA	LEAF SPRING
0104	361278	DISTANZIALE	SPACER
0143	5-102708	KIT GUARN. (9041)	SEALS KIT (9041)
0116	4-101891	COPERCHIO	LID
0117	4-102325	VITE	SCREW
0118	2-03337	VITE	SCREW
0121	2-71590	ANELLO	RING
0122	2-03471	VITE	SCREW
0123	3-00647	BOCCOLA	BUSHING
0125	2-01965	VITE	SCREW
0126	2-03348	VITE	SCREW
0142	4-106063	CRICCHETTO	CRICK
0131	4-102327	MOLLA	SPRING
0132	4-102070	CENTRAGGIO	SPIGOT
0133	2-00209	RONDELLA	WASHER
0134	309358	RONDELLA	WASHER
0135	5-102683	KIT PISTONE+GUARN./CRICCHETTO	PISTON+WASHER
0136	4-105166	RONDELLA	WASHER



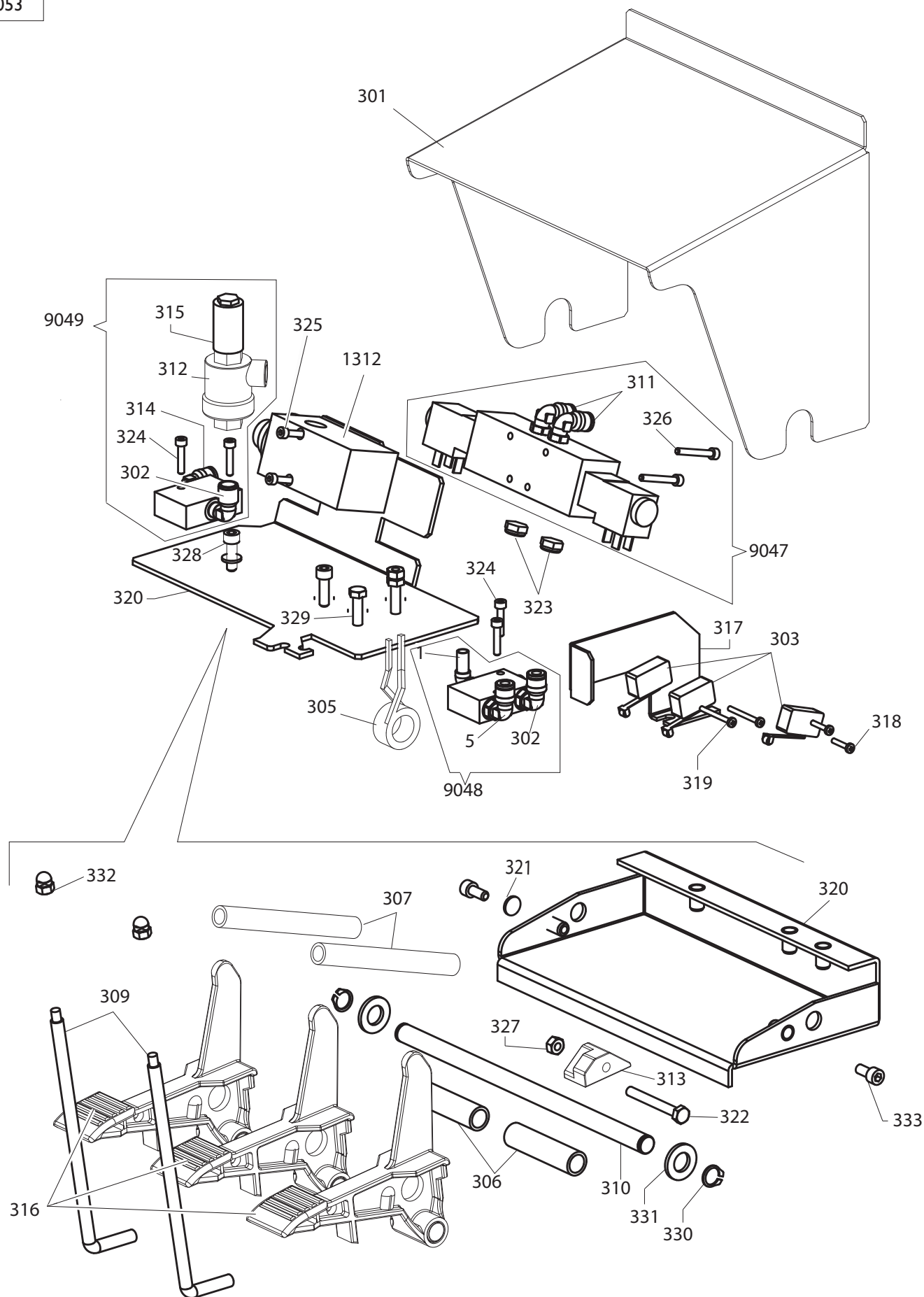
0216	5-102170	MICROINTERR.+CAVO	MICROSWITCH
0220	4-101410	PROTEZIONE	SHIELD
0253	4-100307	LAMIERA	METAL SHEET
0254	5-102709	ATTUATORE	ACTUATOR

9053	5-102710	RIDUTTORE 230V	GEAR BOX 230V
9054	5-190775	RIDUTTORE SENZA MOTORE 230/115V	GEAR BOX 230/115V NO MOTOR
0207	354082	PULEGGIA	PULLEY
0213	3-00575	CINGHIA	BELT
0243	4-115395	SK. MOTOINVERTER 230V	P.C.BOARD
0214	4-104329	PULEGGIA	PULLEY
0244	5-104966	MOTOINVERTER 230V	MOTOINVERTER 230V
0245	4-113412	MOTORE 230V (SENZA SK)	EL.MOTOR
0219	4-109895	CAVO COMANDI MOTORE 230V/115V	CABLE
0220	4-111587	CAVO ALM.MOTORE 115V / 230V	CABLE
0222	4-102396	SUPPORTO MOTORE 230 /115V	SUPPORT

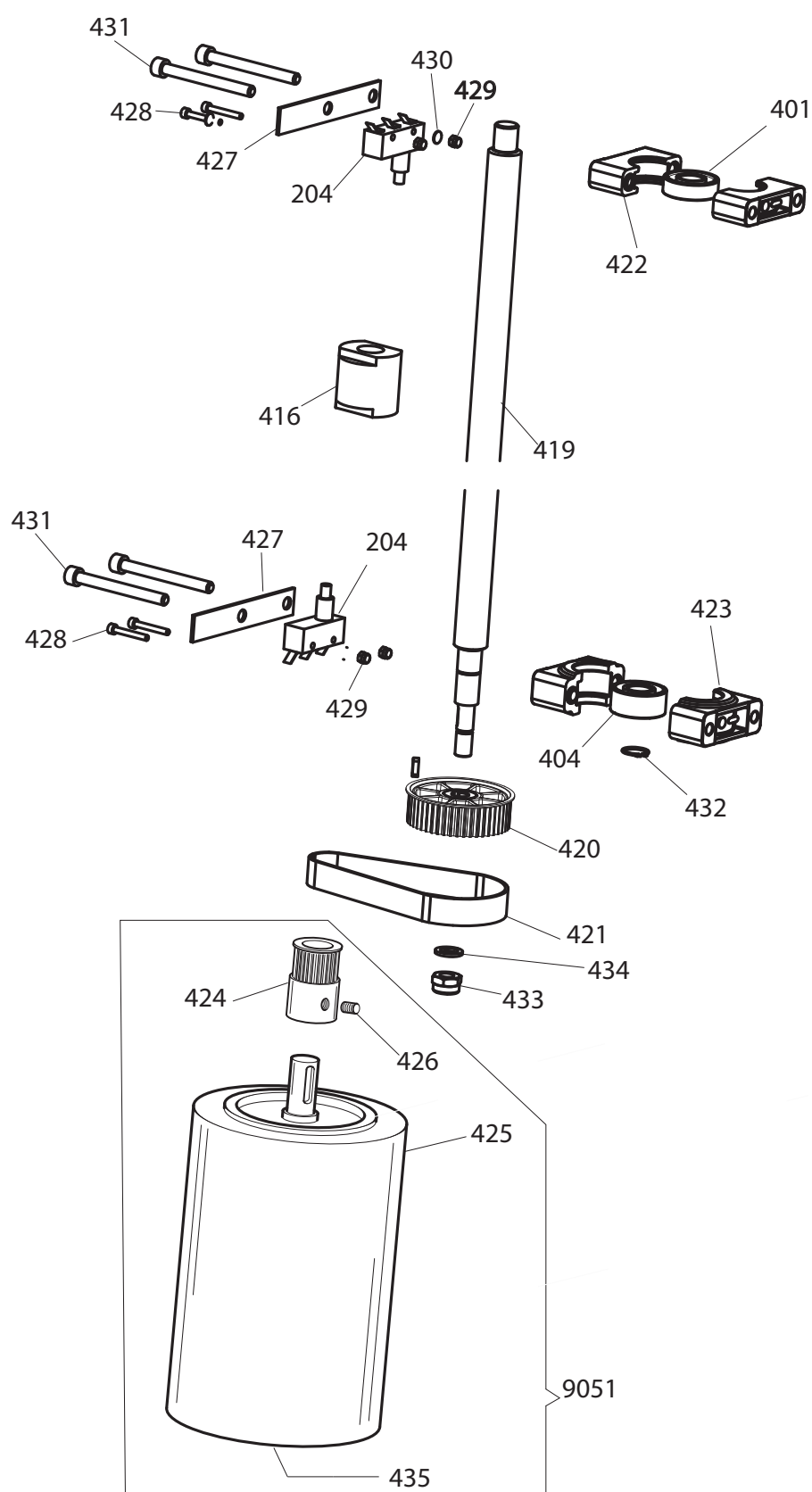
9053	5-102711	RIDUTTORE 115V	GEAR BOX 115V
9054	5-190775	RIDUTTORE 230/115V SENZA MOTORE	GEAR BOX 230/115V
0207	354082	PULEGGIA	PULLEY
0213	3-00575	CINGHIA	BELT
0208	4-111585	SK. MOTOINVERTER 115V	P.C.BOARD
0215	5-103599	MOTOINVERTER 115V	MOTOINVERTER
0214	4-104329	PULEGGIA	PULLEY
0245	4-113412	MOTORE 230V (SENZA SK)	EL.MOTOR
0219	4-109895	CAVO COMANDI MOTORE 230V/115V	CABLE
0220	4-111587	CAVO ALM.MOTORE 115V / 230V	CABLE
0222	4-102396	SUPPORTO MOTORE 230 /115V	SUPPORT


0223	4-110727	CAMMA	CAM
0224	4-102783	ANTIROTAZIONE	BRAKE
0225	2-00853	VITE	SCREW
0226	2-00210	RONDELLA	WASHER
0227	2-00214	RONDELLA	WASHER
0228	2-03144	VITE	SCREW
0229	2-00941	DADO	NUT
0230	2-00215	RONDELLA	WASHER
0231	4-100329	GUIDA ORIZZONTALE	GUIDE
0232	2-02078	VITE	SCREW
0233	361554	LAMIERINO FISS.MICRO	SUPPORT
0234	5-102151	CAVO MICRO	CABLE
0235	4-103071	VITE SPEC.M8	SCREW
0236	2-00372	VITE	SCREW
0237	2-01114	RONDELLA	WASHER
<b>0238</b>	<b>4-100767</b>	<b>COPERTURA</b>	<b>COVER</b>
0239	4-106284	MICRO	MICRO
0240	2-00319	VITE M8	SCREW
0241	2-01114	RONDELLA M8	WASHER
0242	2-01020	DADO M8	NUT

9053

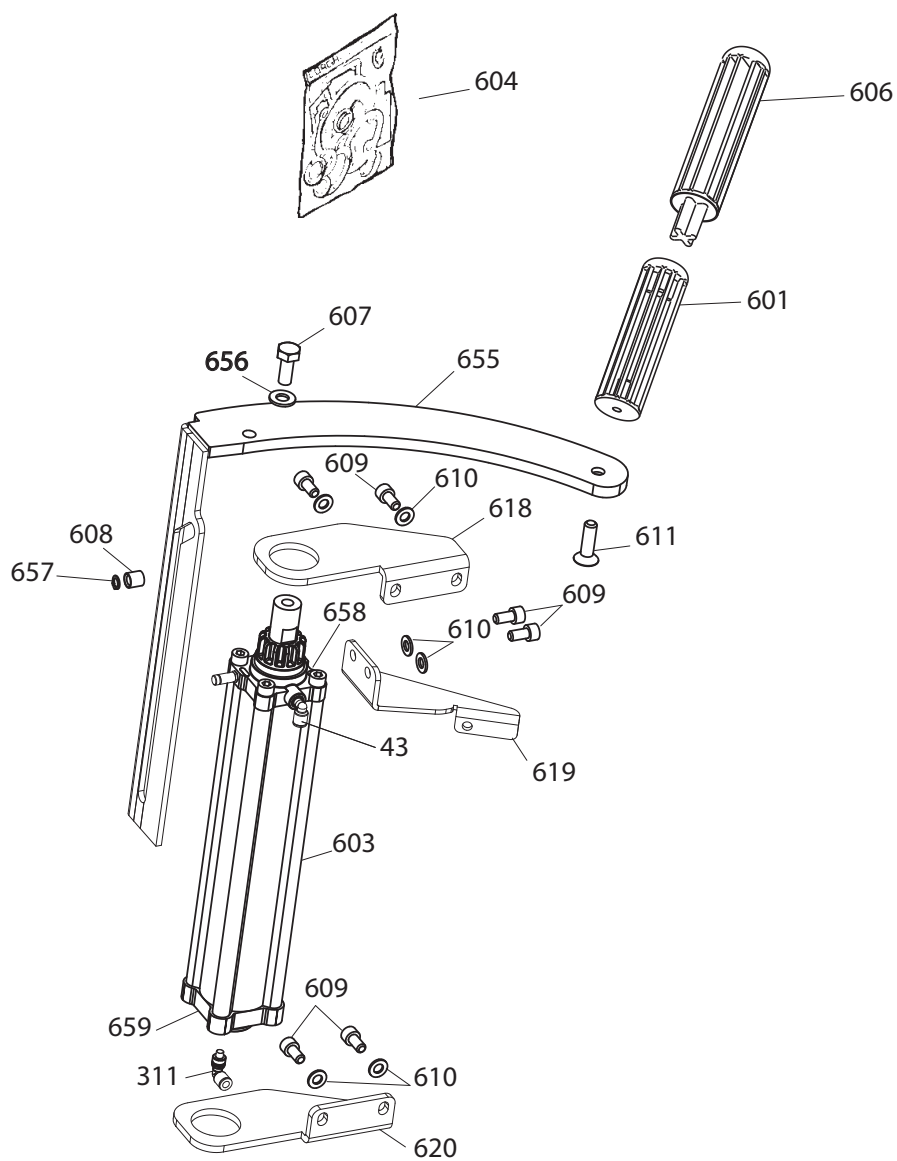


9053 5-100735		PEDALIERA	CONTROL PEDAL
9048	5-102712	VALVOLA	VALVE
0001	3-01176	RACCORDO	CONNECTOR
0302	3-00218	RACCORDO	CONNECTOR
0005	3-00049	RACCORDO	CONNECTOR
9049	5-102713	VALVOLA	VALVE
0302	3-00218	RACCORDO	CONNECTOR
0312	3-00317	VALVOLA	VALVE
0314	3-00138	RACCORDO	CONNECTOR
0315	3-00182	SILENZIATORE	SILENCER
0324	2-00291	VITE	SCREW
9047	5-100625	VALVOLA	VALVE
0311	3-00053	RACCORDO	CONNECTOR
0301	361536	COPERCHIO	LID
0303	440874	MICROINTERR.	MICROSWITCH
0305	4-109664	MOLLA	SPRING
0306	361534	DISTANZIALE	SPACER
0307	410628	MOLLA	SPRING
0309	361537	PROTEZIONE	SHIELD
0310	4-102179	PERNO	PIN
0313	461535	BLOCCHETTO	BLOCK
1312	3-00432	VALVOLA	VALVE
0316	5-102714	PEDALE	PEDAL
0317	361524	LAMIERA SUPP.MICRO	SUPPORT
0318	2-00575	VITE	SCREW
0319	2-00578	VITE	SCREW
0320	5-101167	BASAMENTO+PIASTR.SUP	BASE+PLATE
0321	2-00211	RONDELLA	WASHER
0322	2-00368	VITE	SCREW
0323	3-00181	SILENZIATORE	CONNECTOR
0325	2-00851	VITE	SCREW
0326	2-91668	VITE	SCREW
0327	2-00150	DADO	NUT
0328	2-00310	VITE	SCREW
0329	2-00362	VITE	SCREW
0330	2-00025	ANELLO	RING
0331	315274	RONDELLA	WASHER
0332	2-00104	DADO	NUT
0333	2-00309	VITE	SCREW




	Artiglio Master 26" MI	Fig. F	09b / 04	Gr. Traslazione Verticale
--	------------------------	--------	----------	---------------------------

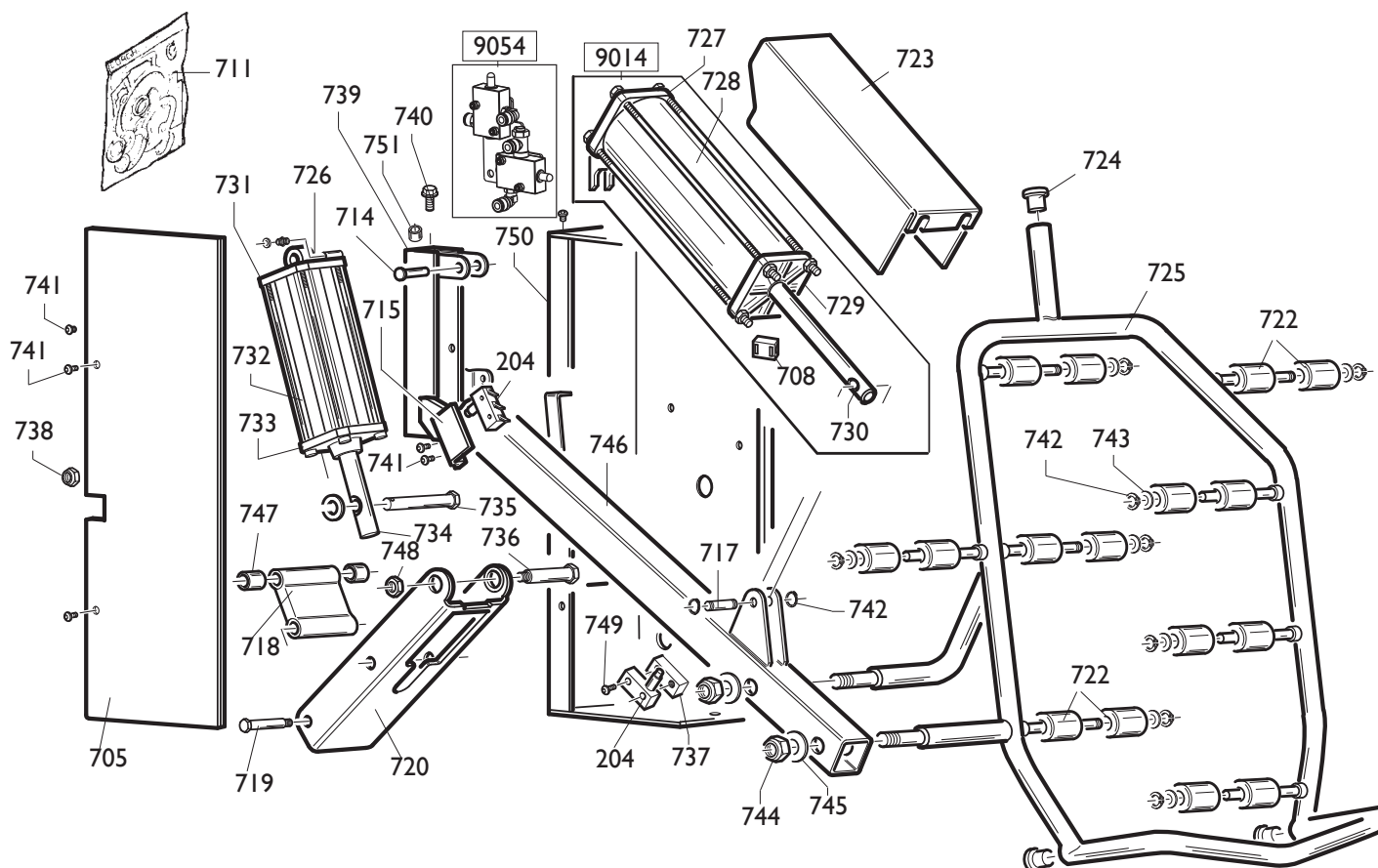
9051	5-102715	MOTORE	MOTOR
0424	4-102630	PULEGGIA	PULLEY
0425	4-102627	MOTORE	MOTOR
0426	2-02401	VITE	SCREW
0435	3-03208	FRENO MOTORE	BRAKE
0204	461380	MICROINTERR.	MICROSWITCH
0401	2-03071	CUSCINETTO	BEARING
0404	2-03070	CUSCINETTO	BEARING
0416	361603	CHIOCCIOLA	SCROLL
0419	361598	ALBERO TRASL	SHAFT
0420	4-102438	PULEGGIA	PULLEY
0421	3-01477	CINGHIA	BELT
0422	4-100630	SEMIPROTEZIONE sup.	SHIELD
0423	4-100631	SEMIPROTEZIONE inf.	SHIELD
0427	361608	LAMIERA MICRO	SUPPORT
0428	2-91668	VITE	SCREW
0429	2-01018	DADO	NUT
0430	2-00209	RONDELLA	WASHER
0431	2-03332	VITE	SCREW
0432	2-00889	ANELLO	RING
0433	2-01276	DADO	NUT
0434	434207	RONDELLA	WASHER






	Artiglio Master 26" MI	Fig. H	05a / 07	Alzatalloni
--	------------------------	--------	----------	-------------

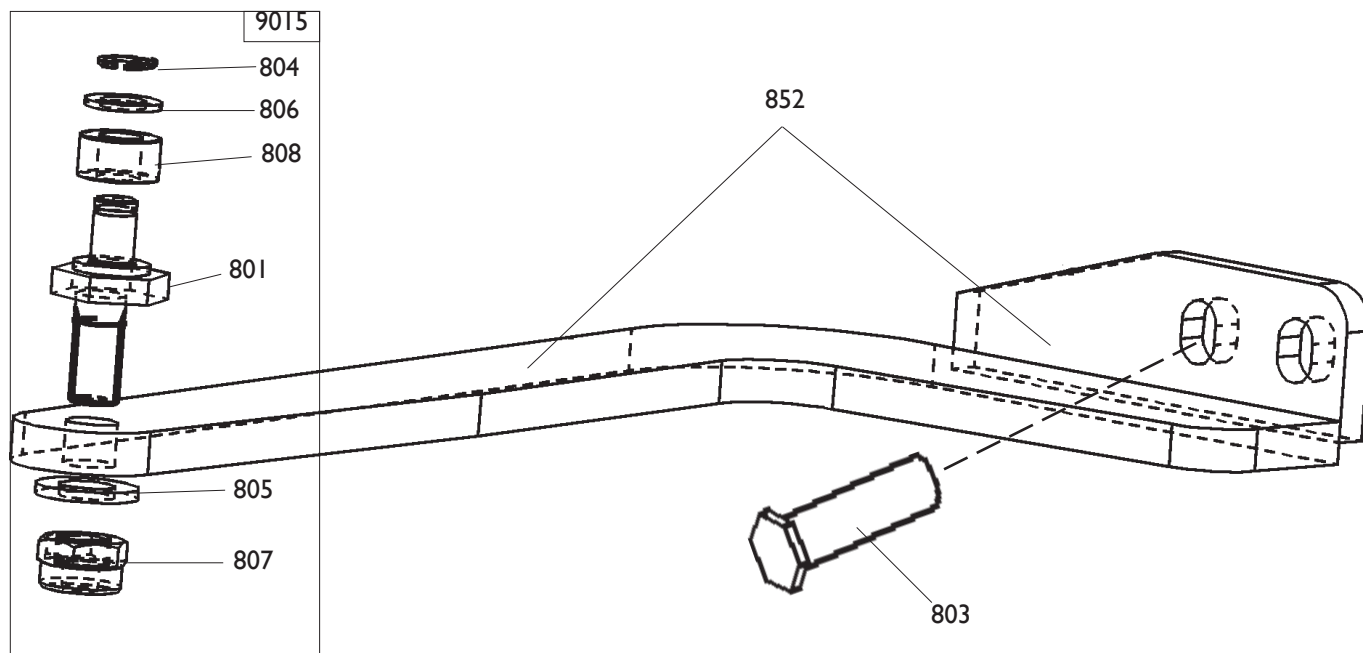
0601	361315	SUPPORTO	SUPPORT
0603	261326	CILINDRO	CYLINDER
0604	262384	KIT GUARN.(603)	SEALS KIT(603)
0606	362850	PROLUNGA	EXTENSION CORD
0607	2-02184	VITE	SCREW
0608	361320	RULLO	ROLLER
0609	2-00319	VITE	SCREW
0610	2-00212	RONDELLA	WASHER
0611	2-00837	VITE	SCREW
0618	2-00837	STAFFA	BRACKET
0619	361322	LAMIERA	METAL SHEET
0620	361317	STAFFA	BRACKET
0655	4-100345	LAMIERA	METAL SHEET
0656	2-00213	RONDELLA	WASHER
0657	2-00021	ANELLO	RING
0658	4-100637	FLANGIA SUP.	FLANGE
0659	4-100633	FLANGIA INF.	FLANGE
0043	3-00217	RACCORDO	CONNECTOR
0311	3-00053	RACCORDO	CONNECTOR



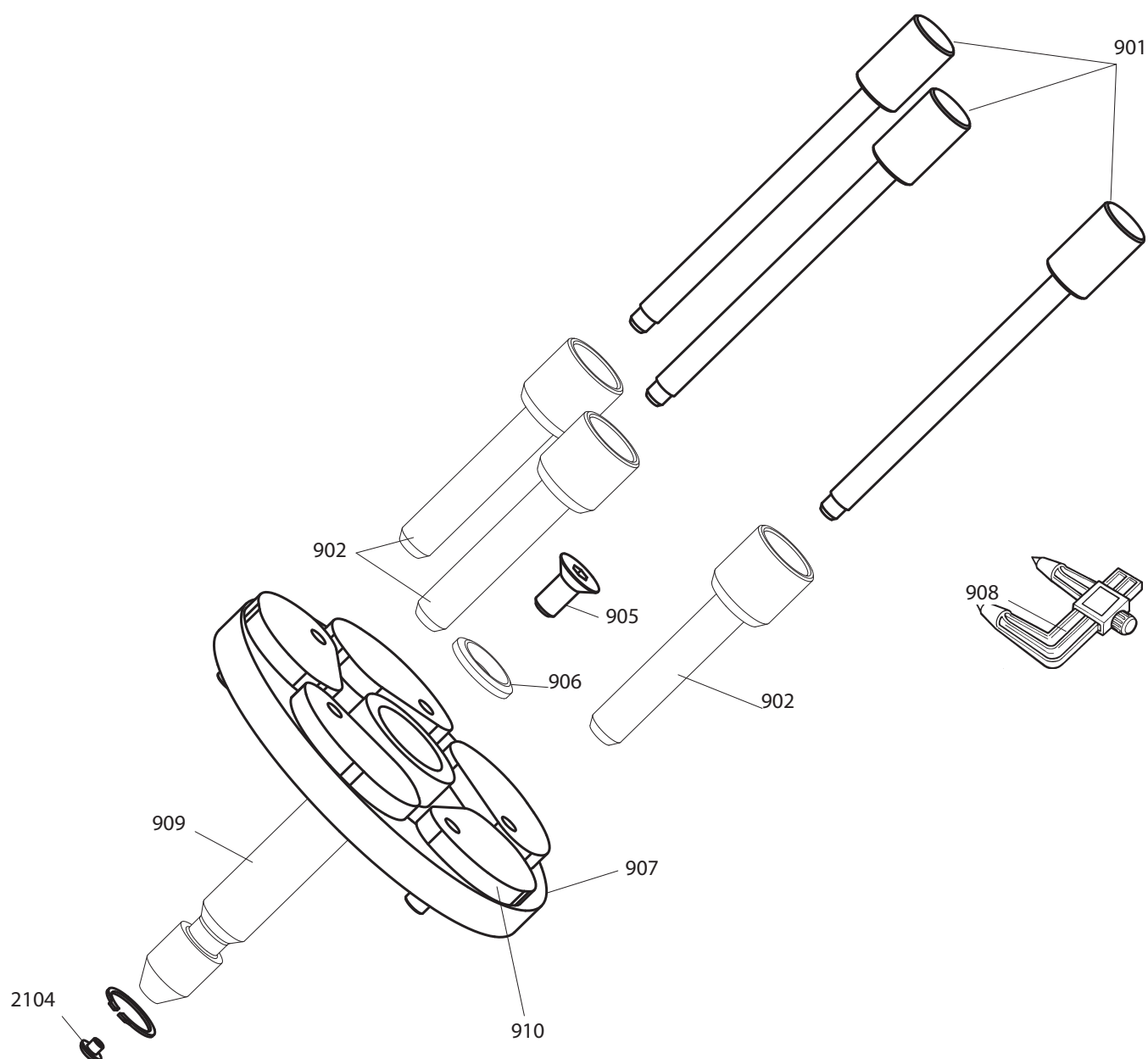
9054	5-101522	VALVOLA	VALVE
9014	5-101184	CILINDRO	CYLINDER
0708	3-01175	VALVOLA	VALVE
0727	339152	FLANGIA POST.	FLANGE
0728	4-103620	CAMICIA	LINER
0729	338300	FLANGIA ANT.	FLANGE
0730	361338	STELO	ROD
0204	461380	MICROINTERR.	MICROSWITCH
0726	5-101529	CILINDRO	CYLINDER
0705	361356	LAMIERA	METAL SHEET
0711	262382	KIT GUARN. (726)	SEALS KIT (726)
0711	241484	KIT GUARN. (9014)	SEALS KIT (9014)
0714	361350	PERNO	PIN
0715	361345	LAMIERA	METAL SHEET
0717	361349	PERNO	PIN
0718	4-100627	BIELLA	TRACE
0719	361348	PERNO	PIN
0720	361333	BIELLA	TRACE
0722	4-103619	RULLO SOLLEVATORE	ROLLER
0723	4-103618	LAMIERA	METAL SHEET
0724	456036	TAPPO	PLUG
0725	4-103623	TUBO SOLLEVATORE	HOIST
0731	361975	FLANGIA POST.	FLANGE
0732	361374	CAMICIA	LINER

	Artiglio Master 26" MI	Fig. I	I 0a / 06	Sollevatore
--	------------------------	--------	-----------	-------------

0733	361519	FLANGIA ANT.	FLANGE
0734	361375	STELO	ROD
0735	361353	PERNO	PIN
0736	361346	PERNO	PIN
0737	361371	DISTANZIALE	SPACER
0738	422289	DADO	NUT
0739	261732	SUPPORTO SCORR.	SUPPORT
0740	2-02155	VITE	SCREW
0741	2-02151	VITE	SCREW
0742	2-00025	ANELLO	RING
0743	315274	RONDELLA	WASHER
0744	2-71526	DADO	NUT
0745	2-01045	RONDELLA	WASHER
0746	4-103621	TUBO SOLL.	TUBE
0747	462117	RONDELLA	WASHER
0748	2-01092	DADO	NUT
0749	2-71389	VITE	SCREW
0750	261370	LAMIERA	PLATE
0751	3-00623	BOCCOLA	BUSH



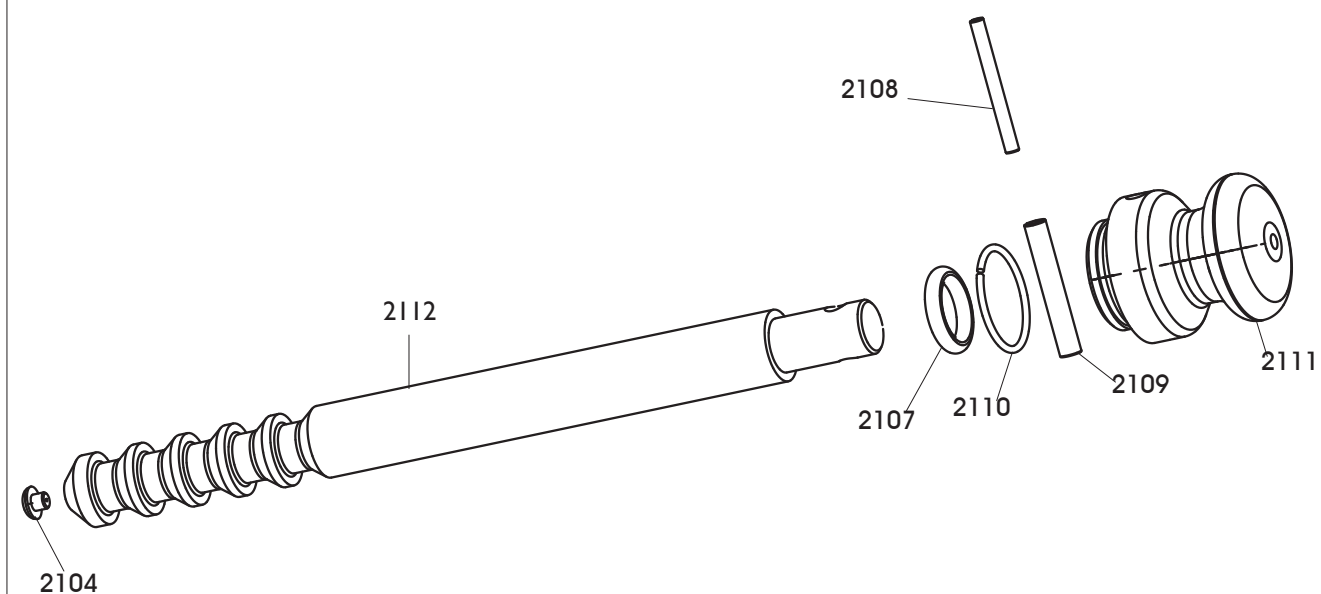
9015	262387	ECCENTRICO	ECCENTRIC
0801	361308	ECCENTRICO	ECCENTRIC
0804	2-00024	ANELLO	RING
0805	2-00214	RONDELLA	WASHER
0806	354588	RONDELLA	WASHER
0807	2-01276	DADO	NUT
0808	2-03061	ROTELLA	WHEEL
0803	2-03157	VITE	SCREW
0852	4-100337	BRACCIO	ARM




0901	361647	VITE
0902	361648	GHIERA
0905	2-03074	VITE
0906	361662	RONDELLA
0907	5-102422	SET FLANGIA 6 PETALI
<b>0908</b>	<b>2008157</b>	<b>RILEVATORE</b>
0909	4-102372	BARRA
0910	4-107023	BIELLA 6 PETALI
2104	461560	PROTEZIONE

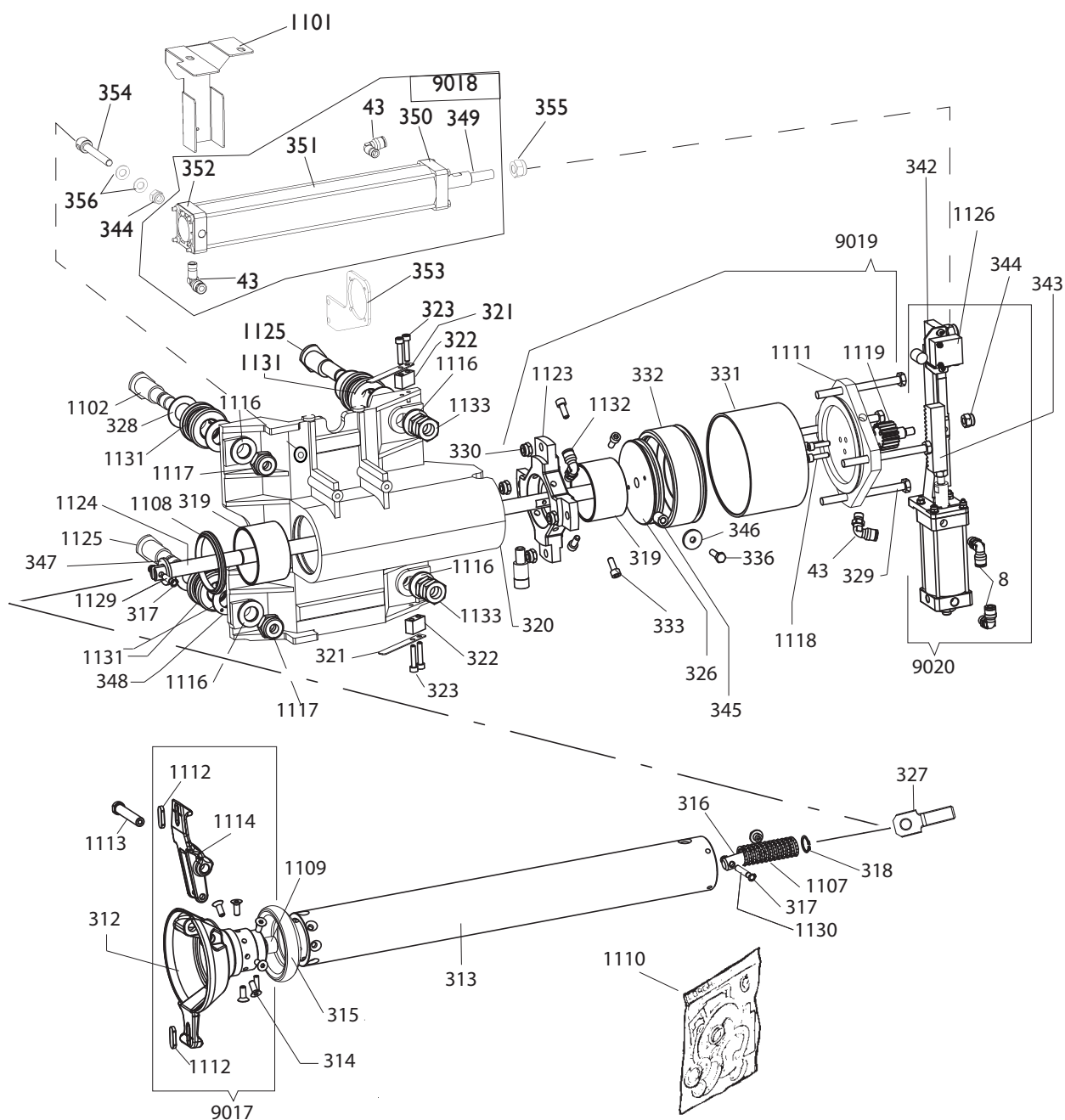
SCREW
NUT
SCREW
WASHER
FLANGE SET
<b>SIGNAL TRACER</b>
BAR
ROD
SHIELD

9048



	Artiglio Master 26" MI	Fig. N	09b / 04	Maniglia
--	------------------------	--------	----------	----------

9048	5-100683	MANIGLIA COMP.	HANDLE
2104	461560	PROTEZIONE	SHIELD
2107	3-01164	GUARNIZIONE	SEAL
2108	2-02896	SPINA	PLUG
2109	2-01932	SPINA	PLUG
2110	2-03236	ANELLO	RING
2111	362464	MANOPOLA	KNOB
2112	4-102345	BARRA	BAR




9017	262390	TESTINA	HEAD
1109	3-01158	BOCCOLA	BUSHING
1112	461489	INSERTO	INSERT
1114	361403	UTENSILE	TOOL
0312	361404	SUPP.TESTINA	SUPPORT
0314	2-00711	VITE	SCREW
9020	5-102716	CILINDRO	CYLINDER
0008	3-00220	RACCORDO	CONNECTOR
9019	261613	UTENSILE	TOOL
0043	3-00217	RACCORDO	CONNECTOR
1111	361493	FLANGIA	FLANGE
1119	361492	INGRANAGGIO	GEAR

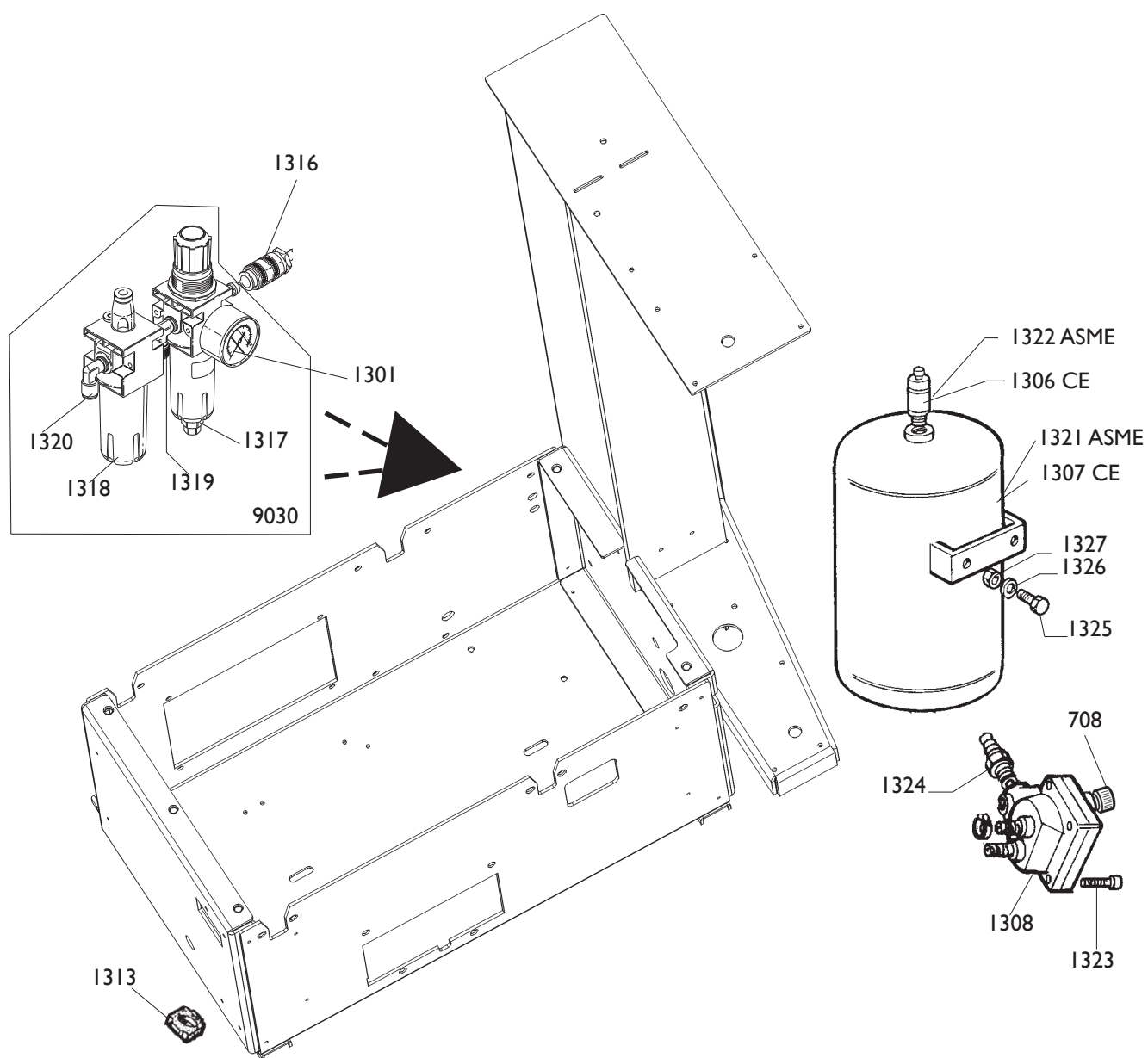



		Artiglio Master 26" MI	Fig. O	04 / 13	Gruppo utensili
1123	361499	SUPPORTO			SUPPORT
1118	2-00298	VITE			SCREW
0319	3-01159	BOCCOLA			BUSH
0326	361495	PISTONE FLOTTANTE			PISTON
0329	2-71394	VITE			SCREW
0331	361483	CAMICIA			LINER
0332	361494	PISTONE			PISTON
0333	2-00299	VITE			SCREW
0336	2-00362	VITE			SCREW
0345	361480	BOCCOLA			BUSH
0346	320574	RONDELLA			WASHER
0043	3-00217	RACCORDO			CONNECTOR
<b>1101</b>	<b>5-105584</b>	<b>LAMIERA+FELTRO</b>			<b>METAL SHEET</b>
1102	361496	PERNO			PIN
1107	461510	MOLLA			SPRING
1108	3-01173	RASCHIAOLIO			SCRAPER RING
1110	245486	KIT GUARN.(9020)			SEALS KIT(9020)
<b>1110</b>	<b>5-103267</b>	<b>KIT GUARN.(9018)</b>			<b>SEALS KIT(9018)</b>
1110	262525	KIT GUARN.(9019)			SEALS KIT(9019)
1113	361488	FULCRO			FULCRUM
1116	2-01045	RONDELLA			WASHER
1117	2-71526	DADO			NUT
1124	361475	STELO			STEM
1125	356012	PERNO ECCENTRICO			PIN
1126	3-01408	VALVOLA			VALVE
1129	361486	SPINA CORTA			PLUG
1130	361487	SPINA LUNGA			PLUG
1131	5-102717	RULLO			ROLLER
1132	5-102718	RACCORDO			CONNECTOR
1133	2-00663	DADO			NUT
0311	3-00053	RACCORDO			CONNECTOR
0313	361477	TUBO			TUBE
0315	461476	RULLO			ROLLER
0316	361484	REGISTRO			CONTROLLER
0317	2-00020	ANELLO			RING
0318	2-01130	ANELLO			RING
<b>0320</b>	<b>5-106097</b>	<b>CARRELLO + BOCCOLE</b>			<b>TROLLEY+BUSHES</b>
0321	4-102831	MOLLA A BALESTRA			SPRING
0322	4-102830	BLOCCHETTO ATT.MOLLA			BLOCK
0323	2-00299	VITE			SCREW
0327	361485	BIELLA			ROD
0328	4-103075	RONDELLA SPESS.			WASHER
0330	2-01137	DADO			NUT
0337	2-00309	VITE			SCREW
0342	262530	PIASTRA			PLATE
0343	361479	CREMAGLIERA			SUPPORT
0344	2-01020	DADO			NUT
0347	307643	RONDELLA			WASHER
0348	3-01195	RONDELLA IN RAME			WASHER
<b>9018</b>	<b>5-105163</b>	<b>CILINDRO TRASLAZIONE</b>			<b>CYLINDER</b>
<b>0349</b>	<b>4-1116197</b>	<b>STELO D.15</b>			<b>ROD</b>
<b>0350</b>	<b>4-108323</b>	<b>FLANGIA ANT. D40</b>			<b>FLANGE</b>
<b>0351</b>	<b>4-1116196</b>	<b>CAMICIA D.40X273,5</b>			<b>LINER</b>
<b>0352</b>	<b>4-108322</b>	<b>FLANGIA POST. D.40</b>			<b>FLANGE</b>
<b>0353</b>	<b>4-1116202</b>	<b>SUPPORTO CILINDRO</b>			<b>SUPPORT</b>
<b>0354</b>	<b>4-1116200</b>	<b>PERNO</b>			<b>PIN</b>
<b>0355</b>	<b>2-01019</b>	<b>DADO M10</b>			<b>NUT</b>
<b>0356</b>	<b>2-00212</b>	<b>RONDELLA D.8</b>			<b>WASHER</b>



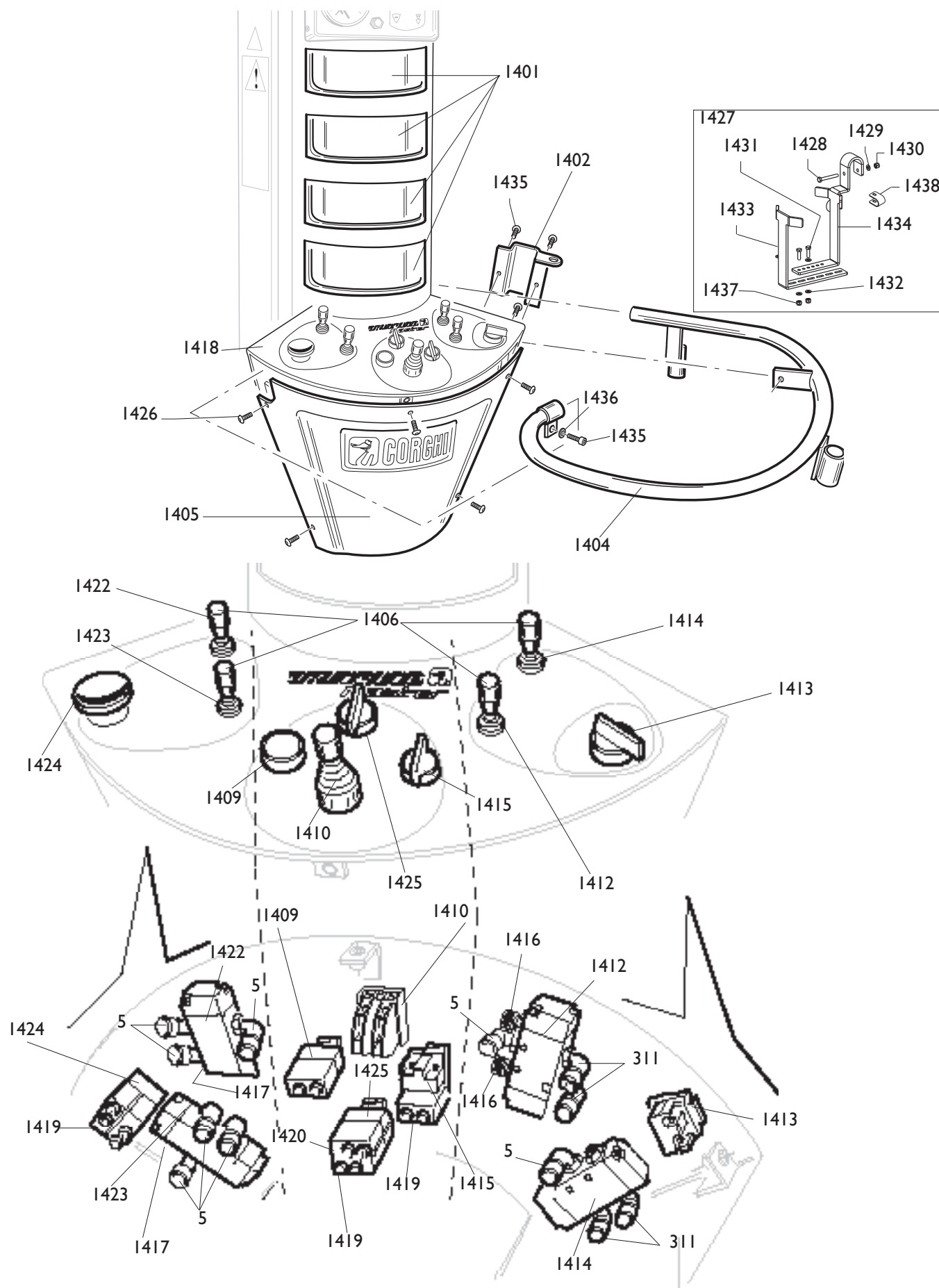
	Artiglio Master 26" MI	Fig. P	02a / 06	Gr.gonfiaggio T.I.
--	------------------------	--------	----------	--------------------


I201	362122	TIRANTE	TIE ROD
I203	362194	FORCELLA	FORK
I204	3-00008	RACCORDO	CONNECTOR
I205	462124	UGELLO	NOZZLE
I206	462140	MOLLA	SPRING
I207	4-101815	ATTACCO T.I.	ADAPTER
I208	262134	ASTA T.I.	SHAFT
I209	4-101825	TERMINALE	TERMINAL
I210	5-101632	MANIGLIA	HANDLE
I211	2-91715	VITE	SCREW
I212	2-91680	DADO	NUT
I213	2-01276	DADO	NUT
I214	2-03089	TERMINALE	TERMINAL
I215	2-91640	DADO	NUT
I216	478247	PERNO	PIN
I217	2-03088	MOLLA	SPRING
I218	362121	PIASTRA	PLATE
I219	2-03090	VITE	SCREW
I220	2-03091	VITE	SCREW
I221	2-01257	DADO	NUT
I222	2-01019	DADO	NUT
I223	2-00214	RONDELLA	WASHER
I224	2-00025	ANELLO	RING
I225	462117	RONDELLA	WASHER
I226	2-00211	RONDELLA	WASHER
I227	262127	BRACCIO DX	ARM
I228	362123	PIASTRA	PLATE
I229	2-02037	VITE	SCREW
I230	2-03121	VITE	SCREW
I231	262128	BRACCIO SX	ARM
I232	2-03065	PERNO	PIN



	Artiglio Master 26" MI	Fig. Q	05 / 10	Gr. cassone +filtro+T.I.
--	------------------------	--------	---------	--------------------------

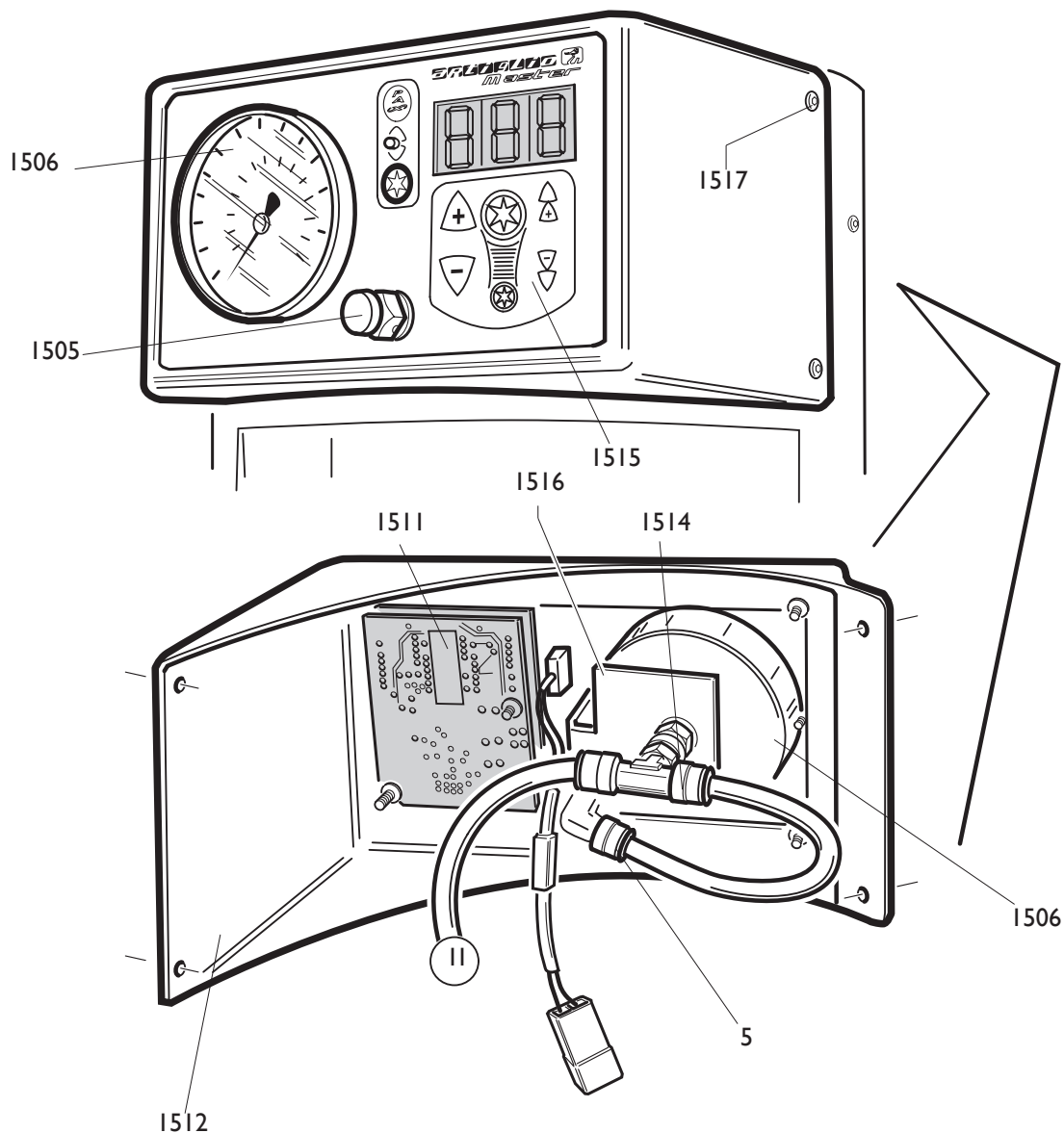
9030 462929	FILTRO	FILTER
1317 457512	BICCHIERE	BOWL
1318 457511	BICCHIERE	BOWL
1319 3-00001	RACCORDO	CONNECTOR
1301 3-00488	MANOMETRO	PRESSURE GAUGE
1320 3-00221	RACCORDO	CONNECTOR
1306 3-00356	VALVOLA CE	VALVE
<b>CE</b>		
1307 262215	SERBATOIO	TANK
<b>ASME</b>		
1321 5-100552	SERBATOIO	TANK
1308 243203	VALVOLA CE/ASME	VALVE
1313 422019	PIEDE	FOOT
1316 3-00257	RACCORDO	CONNECTOR
1322 3-00278	VALVOLA ASME	VALVE
1323 2-94006	VITE	SCREW
1324 442239	RIDUZIONE MF	CONNECTOR
1325 2-02047	VITE	SCREW
1326 2-00212	RONDELLA	WASHER
1327 2-01020	DADO	SCREW
0708 3-01175A	VALVOLA	VALVE



	Artiglio Master 26" MI	Fig. R	05 / 10	Consolle
--	------------------------	--------	---------	----------

0005	3-00049	RACCORDO	CONNECTOR
0311	3-00053	RACCORDO	CONNECTOR
1401	461850	VASCHETTA	CUP
1402	361271	SUPPORTO	SUPPORT
1427	5-101236	ATTACCO 1KG	ADAPTOR 1KG
1427	261060	ATTACCO 5KG	ADAPTOR 5KG
1404	4-102637	TUBO	PIPE
1405	461849	COFANO	HOODE
1406	440585	MANOPOLA	KNOB
1409	261836	INVERT.UTENSILE	REVERSER
1410	261838	INVERT.TESTINA	REVERSER
1412	261834	INVERT.SPINGITORE	REVERSER
1413	261839	INVERT.PAX	REVERSER
	461843	CONTATTO	CONTACT
1414	261833	INVERT.SOLLEVAT.	REVERSER
1415	261835	INVERT.ARRETRAM.	REVERSER
	461843	CONTATTO	CONTACT
1416	433675	REGOLATORE	REGULATOR
1417	3-00181	SILENZIATORE	SILENCER
1418	461848	ADESIVO PANNELLO	PANEL
1419	461841	VALVOLA 304	VALVE
1420	461844	VALVOLA 314	VALVE
1422	5-100089	COMAN. STAL.INF.	REVERSER
1423	5-100085	COMAN. STAL.SUP.	REVERSER
1424	5-100087	INVERT.PENETRAZ.	REVERSER
1425	5-102719	INVERT.ROTAZIONE	REVERSER
1426	2-02177	VITE	SCREW
1428	2-02802	VITE	SCREW
1429	2-00212	RONDELLA	WASHER
1430	2-01020	DADO	NUT
1431	2-02339	VITE	SCREW
1432	2-00211	RONDELLA	WASHER
1433	4-103832	LAMIERA	PROTECTION
1434	4-103831	LAMIERA FERMO	PRETECTION
1435	2-00309	VITE	SCREW
1436	2-00211	RONDELLA	WASHER
1437	2-01257	DADO	NUT
1438	4-102642	LAMIERA ADATT.PORTA GRASSO	SUPPORT

9049



9049 5-100642

PANNELLO COMP. BAR/PSI

PANEL

9049 5-105053

PANNELLO COMP. BAR

PANEL

0005 3-00055

RACCORDO

CONNECTOR

1505 235463

VALVOLA

VALVE

1506 3-00490

MANOMETRO BAR/PSI

PRESSURE GAUGE

1506 3-00493

MANOMETRO KPA

PRESSURE GAUGE

1506 3-00486

MANOMETRO BAR

PRESSURE GAUGE

1511 4-101923

SCHEDA DISPLAY

P.C.BOARD

1512 4-101139

CARTER

CASING

1514 3-00287

RACCORDO

CONNECTOR

1515 4-100148

PANNELLO

PANEL

1516 361797

LAMIERA

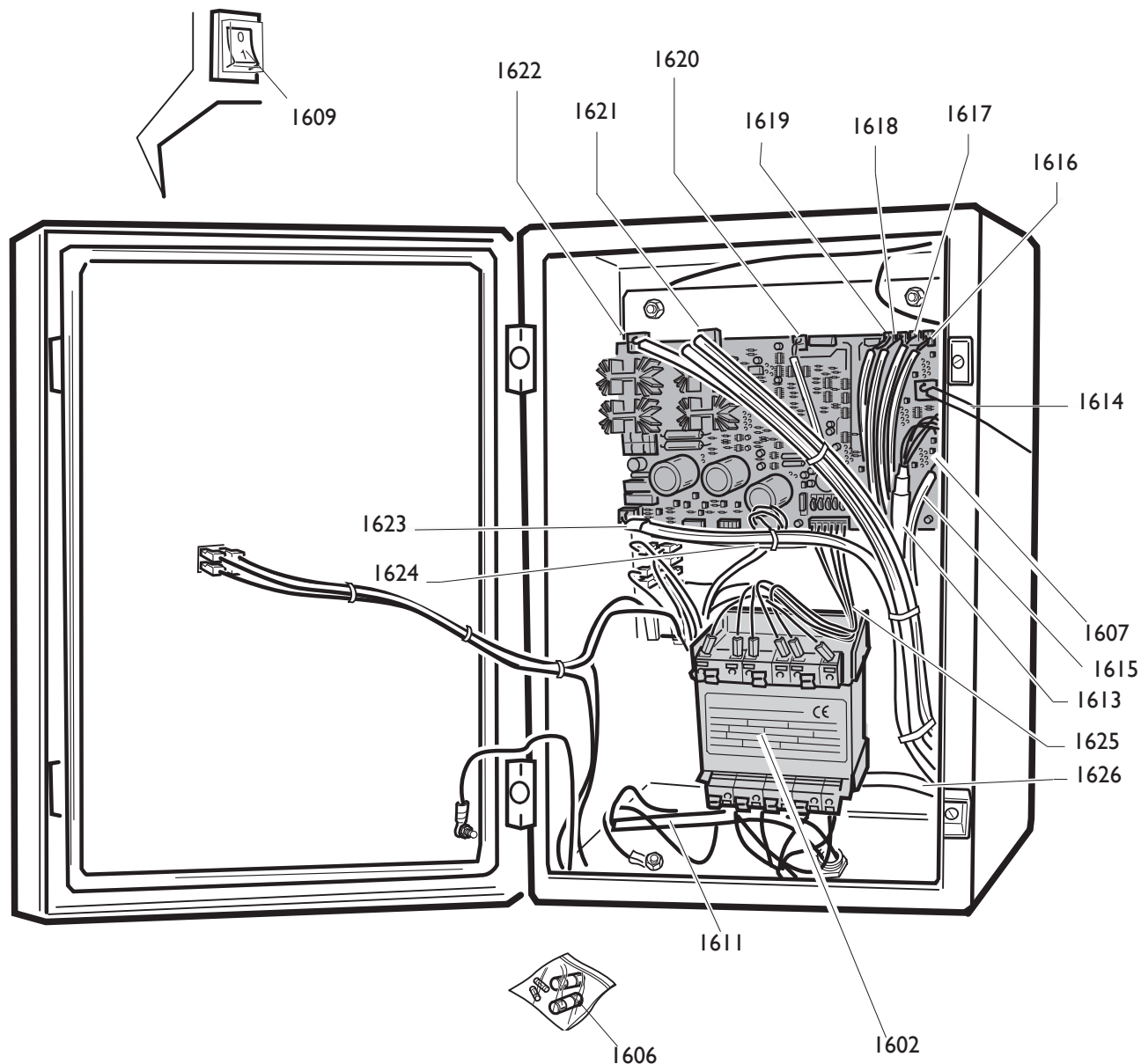
SUPPORT

1517 2-02145

VITE

SCREW






1602	461829	TRASFORMATORE
1606	5-100196	SET FUSIBILI
1607	4-101919	SCHEDA ELETTRON.
1609	433848	INTERRUTTORE
1611	5-100654	CAVO RETE
1613	5-100665	CAVO CONSOLLE
1614	5-100664	CAVO ENCODER
1615	5-100671	CAVO DISPLAY
1616	5-100666	CAVO MICRO SOLLEV.
1617	5-100668	CAVO ASSE Y DOWN
1618	5-100667	CAVO ASSE Y UP
1619	5-100669	CAVO AZZERAMENTO
1620	5-100722	CAVO ROTAZIONE
1621	5-100663	CAVO MOTORE ASSE Y
1622	5-100662	CAVO ATT.ASSE X
1623	5-100689	CAVO BRAKEY
1624	5-100660	CAVO EV1/EV2
1625	5-101471	CAVO SEC.TRASF.
1626	5-105010	CAVO ALIM.MOTOINV.

1602	461829	TRASFORMATORE
1606	5-100196	SET FUSIBILI
1607	4-101919	SCHEDA ELETTRON.
1609	433848	INTERRUTTORE
1611	5-100654	CAVO RETE
1613	5-100665	CAVO CONSOLLE
1614	5-100664	CAVO ENCODER
1615	5-100671	CAVO DISPLAY
1616	5-100666	CAVO MICRO SOLLEV.
1617	5-100668	CAVO ASSE Y DOWN
1618	5-100667	CAVO ASSE Y UP
1619	5-100669	CAVO AZZERAMENTO
1620	5-100722	CAVO ROTAZIONE
1621	5-100663	CAVO MOTORE ASSE Y
1622	5-100662	CAVO ATT.ASSE X
1623	5-100689	CAVO BRAKEY
1624	5-100660	CAVO EV1/EV2
1625	5-101471	CAVO SEC.TRASF.
1626	5-105010	CAVO ALIM.MOTOINV.



	Artiglio Master 26" MI	Fig. U	04A / 04	Giro Tubi
--	------------------------	--------	----------	-----------


a	I-04567	Tubo PA11 azzurro D.4xI	Pipe PA11 blue D.4xI	(max 2000mm)
b	I-04333	Tubo PA12 nero D.8xI	Pipe PA12 black D.8xI	(max 2800mm)
c	I-04036	Tubo PA11 giallo D.6xI	Tubo PA11 yellow D.6xI	(max 2100mm)
d	I-04283	Tubo PA12 nero D.6xI	Pipe PA12 black D.6xI	(max 2300mm)
e	I-04035	Tubo PA11 nero D.4xI	Pipe PA11 black D.4xI	(max 2700mm)
f	I-04002	Tubo PA11 trasparente D.6xI	Pipe PA11 white D.6xI	(max 3300mm)
g	I-04001	Tubo PA11 rosso D.6xI	Pipe PA11 red D.6xI	(max 1500mm)
h	I-04551	Tubo PA11 verde D.4xI	Pipe PA11 green D.4xI	(max 800mm)
i	I-04003	Tubo PA11 blu D.6xI	Pipe PA11 blue D.6xI	(max 600mm)

I702 3-01174  
**I703 5-100337**

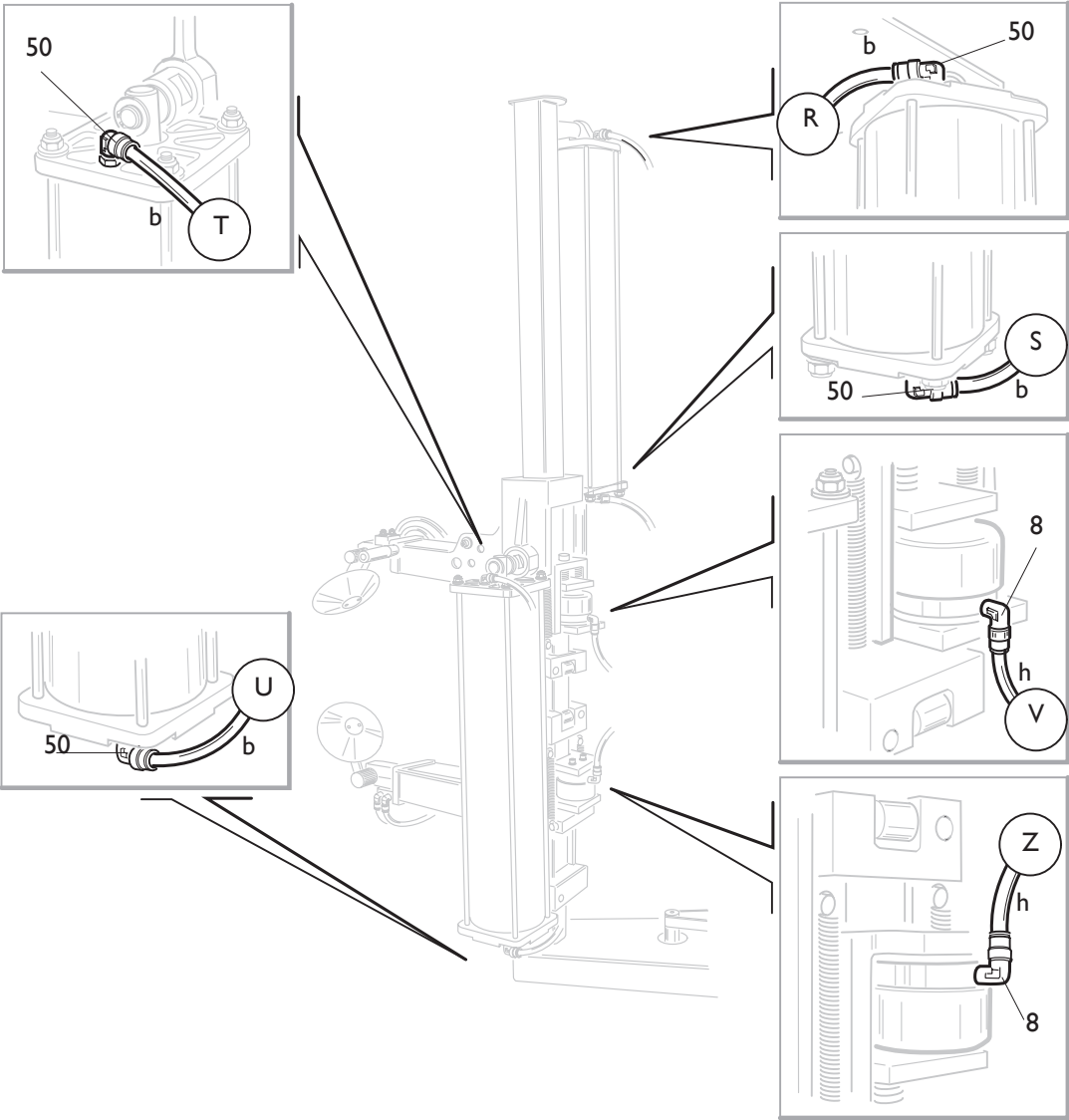
RACCORDO  
**DISTRIBUTORE**


CONNECTOR  
**DISTRIBUTOR**



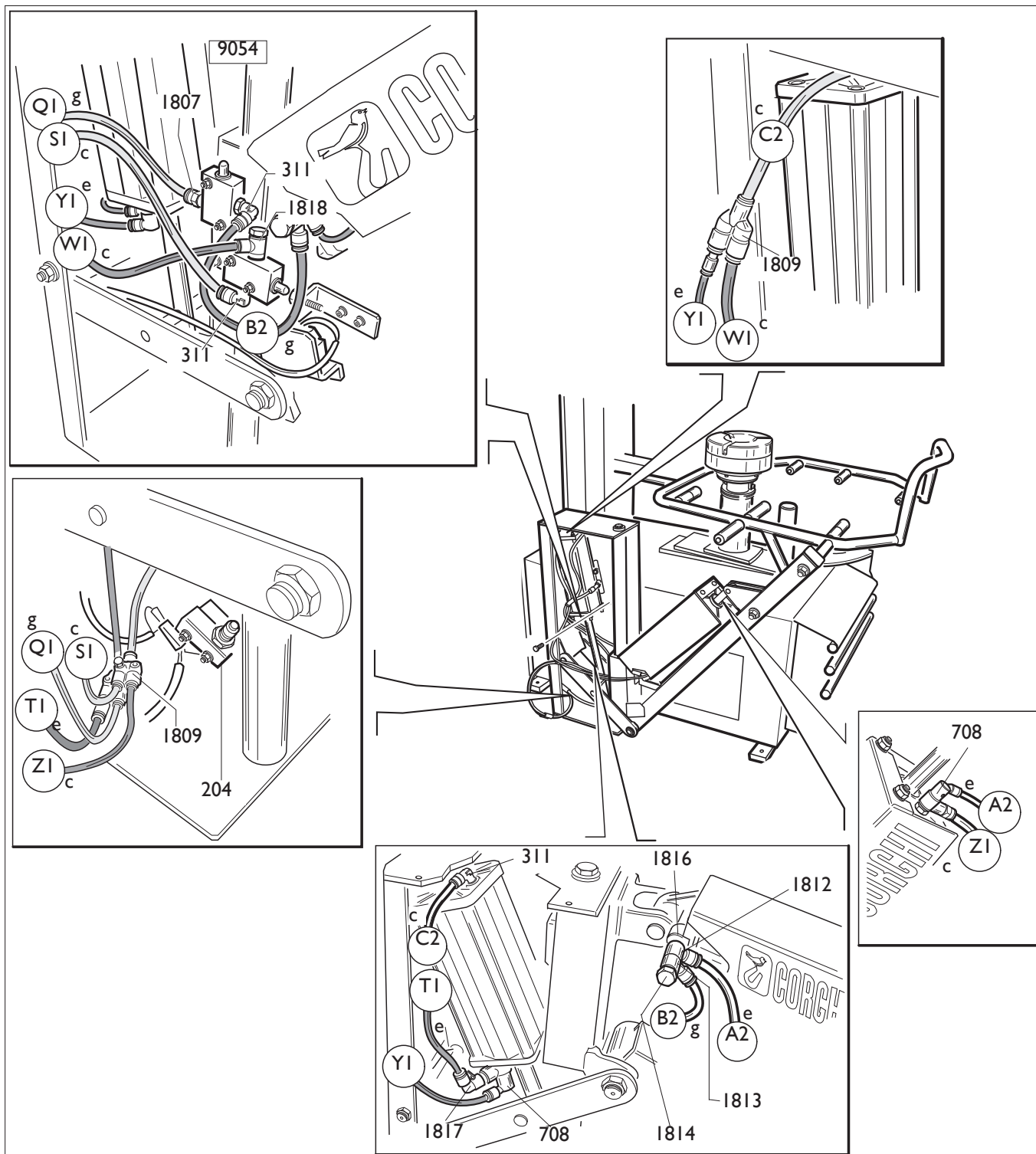
	Artiglio Master 26" MI	Fig. U	05 / 07	Giro Tubi
--	------------------------	--------	---------	-----------

a	I-04567	Tubo PA I I azzurro D.4xI	Pipe PA I I blue D.4xI (max 2000mm)
b	I-04333	Tubo PA I 2 nero D.8xI	Pipe PA I 2 black D.8xI (max 2800mm)
c	I-04036	Tubo PA I I giallo D.6xI	Pipe PA I I yellow D.6xI (max 2100mm)
d	I-04283	Tubo PA I 2 nero D.6xI	Pipe PA I 2 black D.6xI (max 2300mm)
e	I-04035	Tubo PA I I nero D.4xI	Pipe PA I I black D.4xI (max 2700mm)
f	I-04002	Tubo PA I I trasparente D.6xI	Pipe PA I I white D.6xI (max 3300mm)
g	I-04001	Tubo PA I I rosso D.6xI	Pipe PA I I red D.6xI (max 1500mm)
h	I-04551	Tubo PA I I verde D.4xI	Pipe PA I I green D.4xI (max 800mm)
i	I-04003	Tubo PA I I blu D.6xI	Pipe PA I I blue D.6xI (max 600mm)
0005	3-00055	RACCORDO	CONNECTOR
0008	3-00220	RACCORDO	CONNECTOR
0302	3-00218	RACCORDO	CONNECTOR
0311	3-00053	RACCORDO	CONNECTOR
0314	3-00138	RACCORDO	CONNECTOR
0043	3-00217	RACCORDO	CONNECTOR
1704	3-00021	RACCORDO	CONNECTOR
1705	3-00459	RACCORDO	CONNECTOR
1706	3-00288	RACCORDO	CONNECTOR
1707	3-00048	RACCORDO	CONNECTOR
1708	5-100129	TUBO DI GONFIAGGIO	PIPE




	Artiglio Master 26" MI	Fig.V	09a / 04	Giro Tubi
--	------------------------	-------	----------	-----------

a	I-04567	Tubo PA11 azzurro D.4xI	Pipe PA11 blue D.4xI	(max 2000mm)
b	I-04333	Tubo PA12 nero D.8xI	Pipe PA12 black D.8xI	(max 2800mm)
c	I-04036	Tubo PA11 giallo D.6xI	Tubo PA11 yellow D.6xI	(max 2100mm)
d	I-04283	Tubo PA12 nero D.6xI	Pipe PA12 black D.6xI	(max 2300mm)
e	I-04035	Tubo PA11 nero D.4xI	Pipe PA11 black D.4xI	(max 2700mm)
f	I-04002	Tubo PA11 trasparente D.6xI	Pipe PA11 white D.6xI	(max 3300mm)
g	I-04001	Tubo PA11 rosso D.6xI	Pipe PA11 red D.6xI	(max 1500mm)
h	I-04551	Tubo PA11 verde D.4xI	Pipe PA11 green D.4xI	(max 800mm)
✕	I-04003	Tubo PA11 blu D.6xI	Pipe PA11 blue D.6xI	(max 600mm)
0050	3-00059	RACCORDO	CONNECTOR	
0008	3-00220	RACCORDO	CONNECTOR	



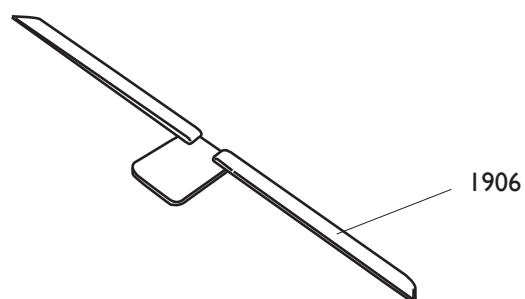
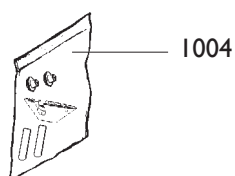
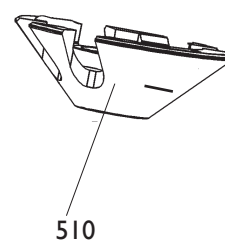
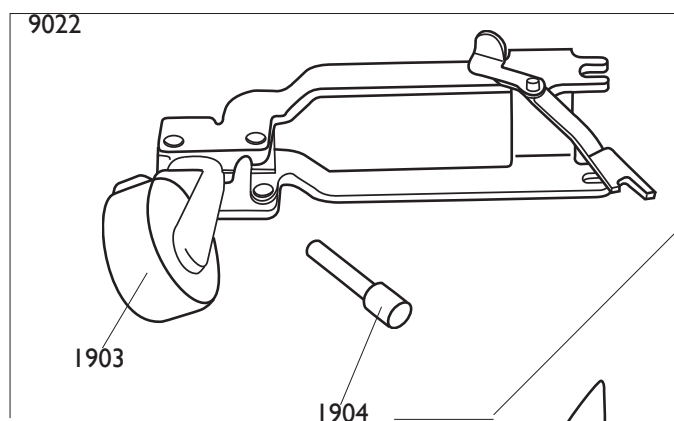
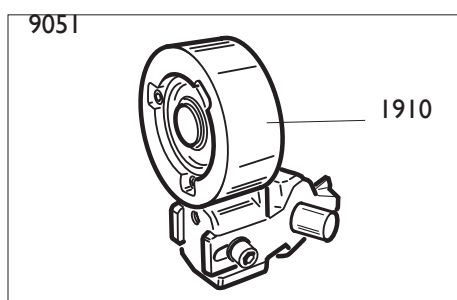
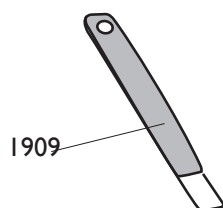


	Artiglio Master 26" MI	Fig.V	10 / 06	Giro Tubi
--	------------------------	-------	---------	-----------

a	I-04567	Tubo PA11 azzurro D.4xI	Pipe PA11 blue D.4xI	(max 2000mm)
b	I-04333	Tubo PA12 nero D.8xI	Pipe PA12 black D.8xI	(max 2800mm)
c	I-04036	Tubo PA11 giallo D.6xI	Tubo PA11 yellow D.6xI	(max 2100mm)
d	I-04283	Tubo PA12 nero D.6xI	Pipe PA12 black D.6xI	(max 2300mm)
e	I-04035	Tubo PA11 nero D.4xI	Pipe PA11 black D.4xI	(max 2700mm)
f	I-04002	Tubo PA11 trasparente D.6xI	Pipe PA11 white D.6xI	(max 3300mm)
g	I-04001	Tubo PA11 rosso D.6xI	Pipe PA11 red D.6xI	(max 1500mm)
h	I-04551	Tubo PA11 verde D.4xI	Pipe PA11 green D.4xI	(max 800mm)
i	I-04003	Tubo PA11 blu D.6xI	Pipe PA11 blue D.6xI	(max 600mm)

9054	5-101522	VALVOLA	VALVE
1818	4-104740	STROZZATORE	THROTTLER
1807	3-00461	RACCORDO	CONNECTOR
0311	3-00053	RACCORDO	CONNECTOR

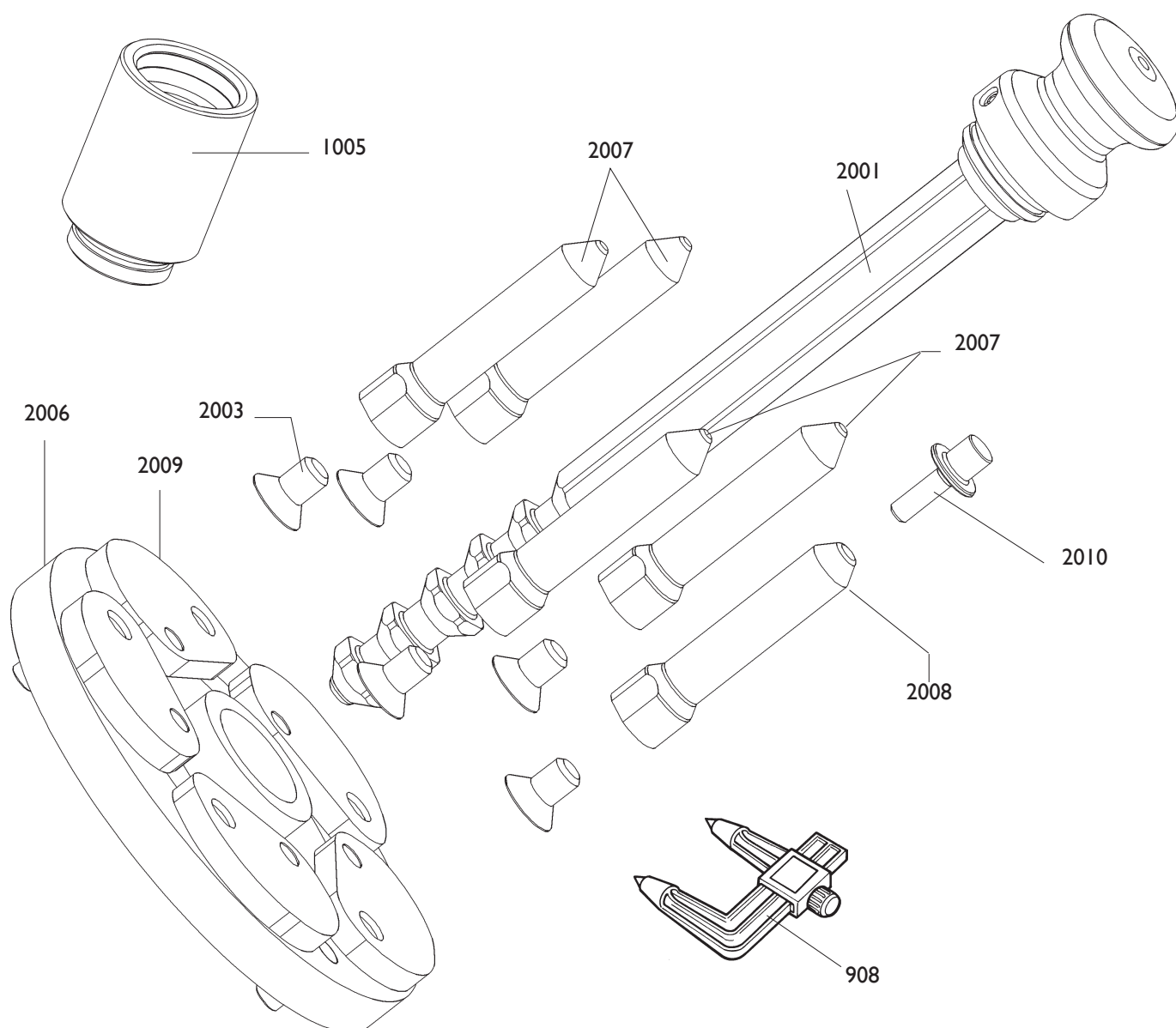
0708	3-01175	VALVOLA	VALVE
0204	461380	MICROINTERRUTTORE	MICROSWITCH
0311	3-00053	RACCORDO	CONNECTOR
1813	3-00515	RACCORDO	CONNECTOR
1814	3-00075	RACCORDO	CONNECTOR
1816	3-00451	RONDELLA	WASHER
1817	3-00054	RACCORDO	CONNECTOR
1809	3-01866	RACCORDO	CONNECTOR



9051	5-101216	RULLO	ROLLER
1910	4-103525	RULLO	ROLLER

9022	261991	SUPPORTO	SUPPORT
1903	8-11100090	RULLO	ROLLER
1904	362007	PERNO	PIN

1905	461826	CINGHIA	BELT
1906	801260235	KIT REGLETTE	REGLETTE KIT
1004	262389	KIT PROT.PLASTICA	PLASTIC PROT.KIT
0510	461668	PROTEZIONE	SHIELD
1909	4-102462	LEVA PAX	PAX LEVER


**0908 2008157**

1005 263436  
2001 262468  
2003 2-71769  
2006 5-102421  
2007 5-102720  
2008 5-102721  
2009 4-107024  
2010 4-102377

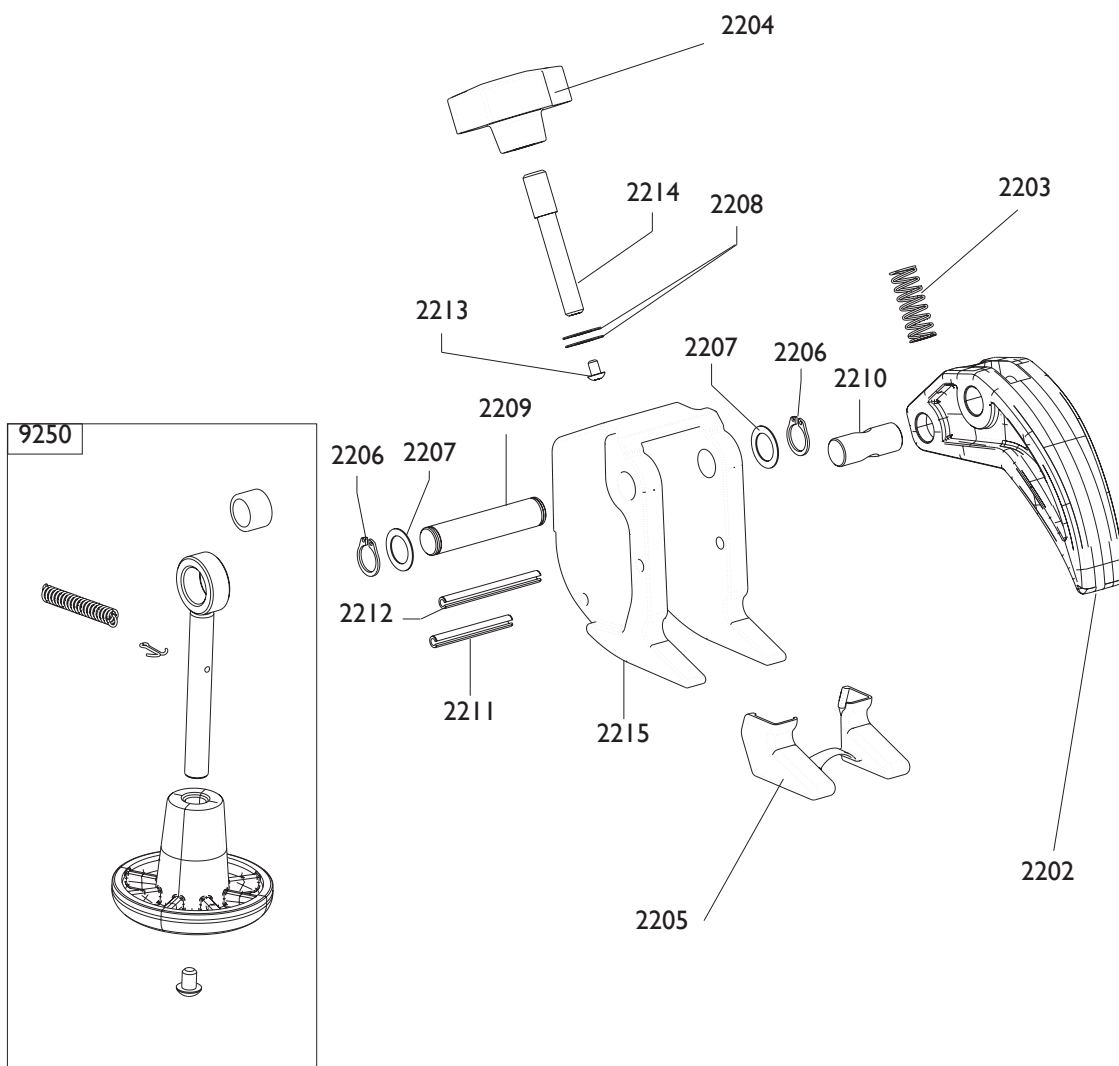
**RILEVATORE**

PROLUNGA  
MANIGLIA  
VITE  
SET FLANGIA 6 PETALI  
COLONNETTA 6PETALI  
COL.CON SERRAGG.6PETALI  
BIELLA 6 PETALI  
GHIERA

**SIGNAL TRACER**

EXTENSION CORD  
HANDLE  
SCREW  
FLANGE SET  
STUD  
STUD  
STUD  
NUT

9251



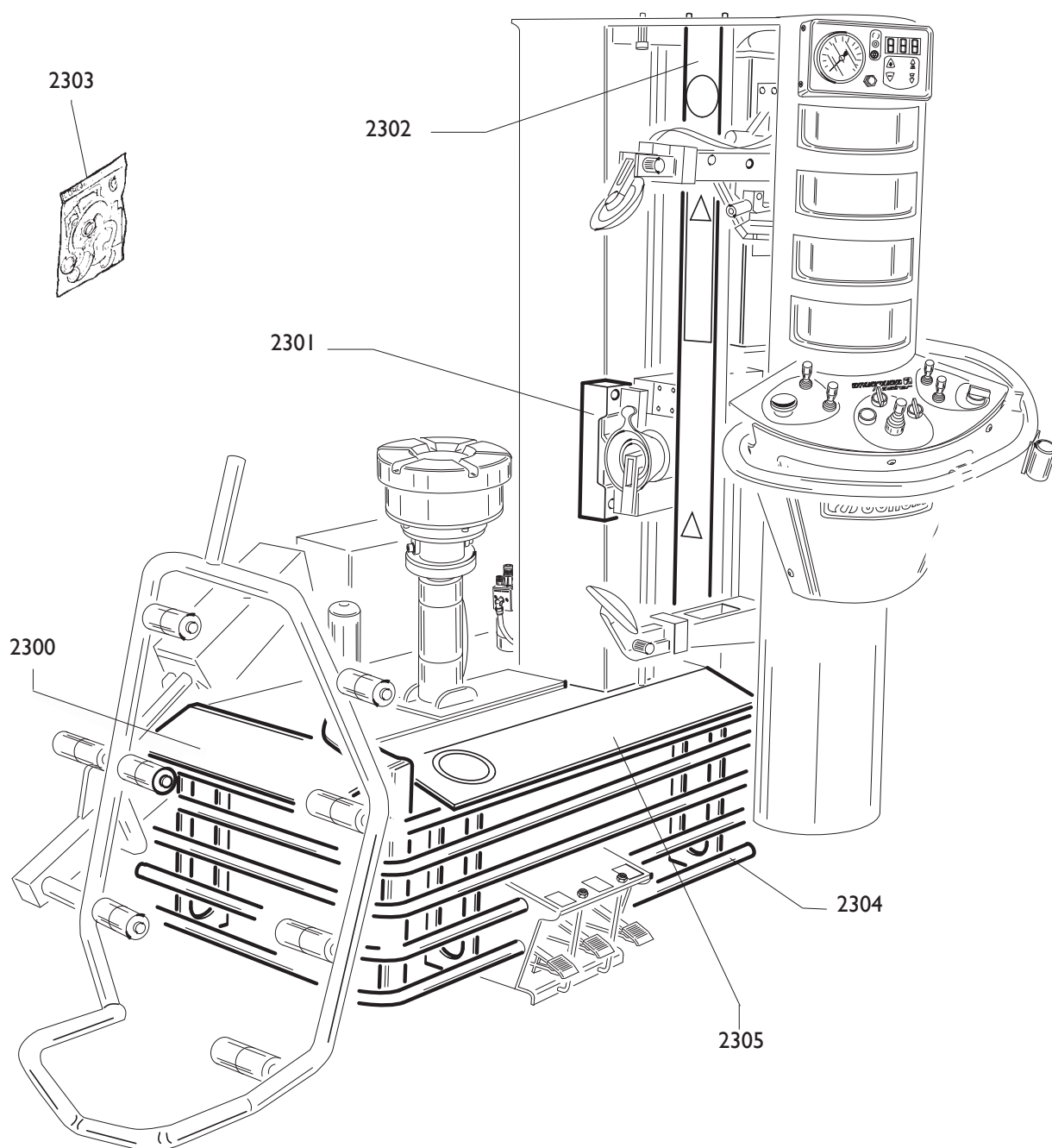
9251	8-11100120	MORSETTO
2202	4-104051	DITO
2203	3-01760	MOLLA
2204	3-01715	VOLANTINO
2205	8-11100126	KIT 6 PROTEZIONI
2206	2-00025	SEEGER
2207	315274	RONDELLA
2208	309358	RONDELLA
2209	4-104271	PERNO
2210	4-104258	PERNO
2211	2-71566	SPINA
2212	2-02219	SPINA
2213	2-02152	VITE
2214	4-104259	PERNO
2215	4-104235	CORPO

TERMINAL
U-BOLT
SPRING
HANDWHEEL
SHIELD
SEEGER
WASHER
WASHER
PIN
PIN
PIN
SPIROL
SPIROL
SCREW
PIN
BODY

9250 5-101642

KIT TRASFORM.

TRASFORM.KIT



2300 4-100336

2301 361242

2302 361241

2303 5-102924

2304 4-104705

2305 361247

LAMIERA CORTA

PROTEZIONE TESTINA

PROTEZIONE LUNGA

KIT ADESIVI

PROTEZIONE INFERIORE

LAMIERA LUNGA

PROTECTION

PROTECTION

PROTECTION

LABELS KIT

PROTECTION

PROTECTION

A series of horizontal dotted lines spanning the width of the page, providing a template for writing.

A series of horizontal dotted lines for writing, spanning the width of the page.

Il disegno è realizzato con tutti i particolari ma solo quelli codificati sono forniti come ricambi. L'Azienda si riserva la facoltà di apportare modifiche senza preavviso.



Via per Carpi, n°9 - 42015 Correggio (RE) ITALY  
Tel. ++39 0522 639111 - Fax ++39 0522 639150  
[www.corgi.com](http://www.corgi.com) - [info@corgi.com](mailto:info@corgi.com)

The drawing shows all parts but only the coded parts are supplied as spares. The Company reserves the right to make modifications without prior notice.

COMIM - Cod. 4-104538H - 04\_2013.