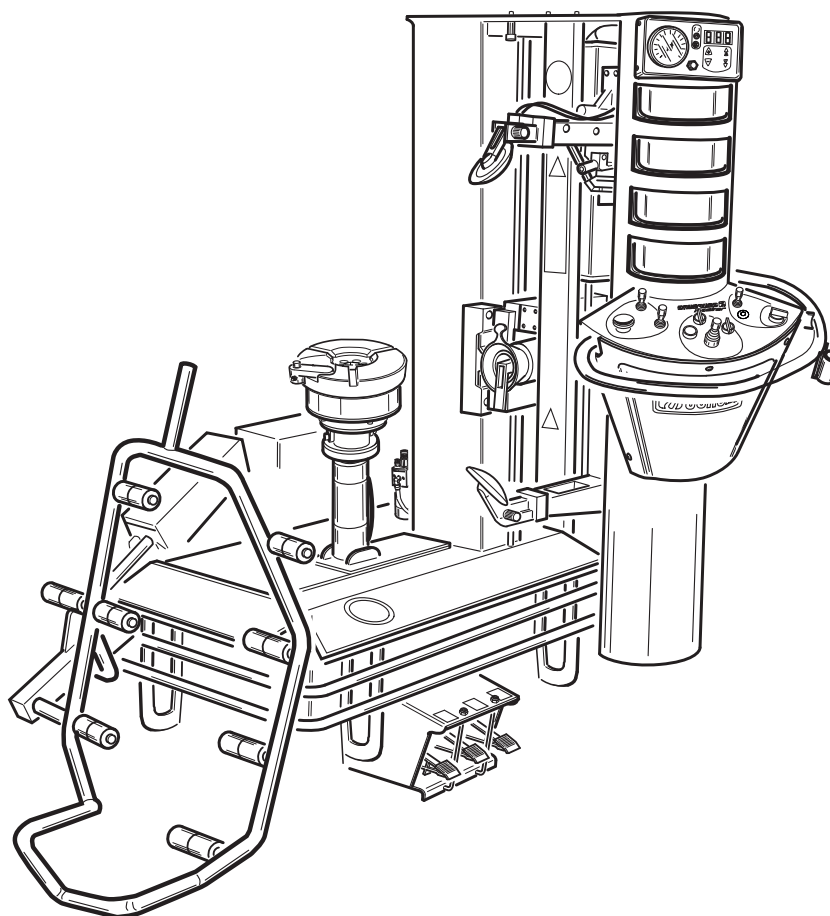


ARTIGLIO MASTER

Pezzi di ricambio / Spare parts list



Code: 4-104538K

Production date: 02 / 2018



www.corghi.com - info@corghi.com

I

Sul presente documento sono stati evidenziati con colore grigio i ricambi consigliati e indicati in grassetto i codici che sono variati rispetto a quelli riportati nella precedente versione del 01/17

EN

In this document, the recommended spare parts have been highlighted in gray, while in bold you find those codes which are different if compared with the previous version dated 01/17

DE

Im vorliegenden Dokument wurden die empfohlenen Ersatzteile in grauer Farbe hervorgehoben; die Teilenummern in Fettdruck haben sich bezugnehmend auf die vorherige Version vom 01/17 geändert.

FR

Dans ce document, les pièces de rechange préconisées sont soulignées en gris, tandis que les références différentes par rapport à la version précédente du 01/17 sont en gras

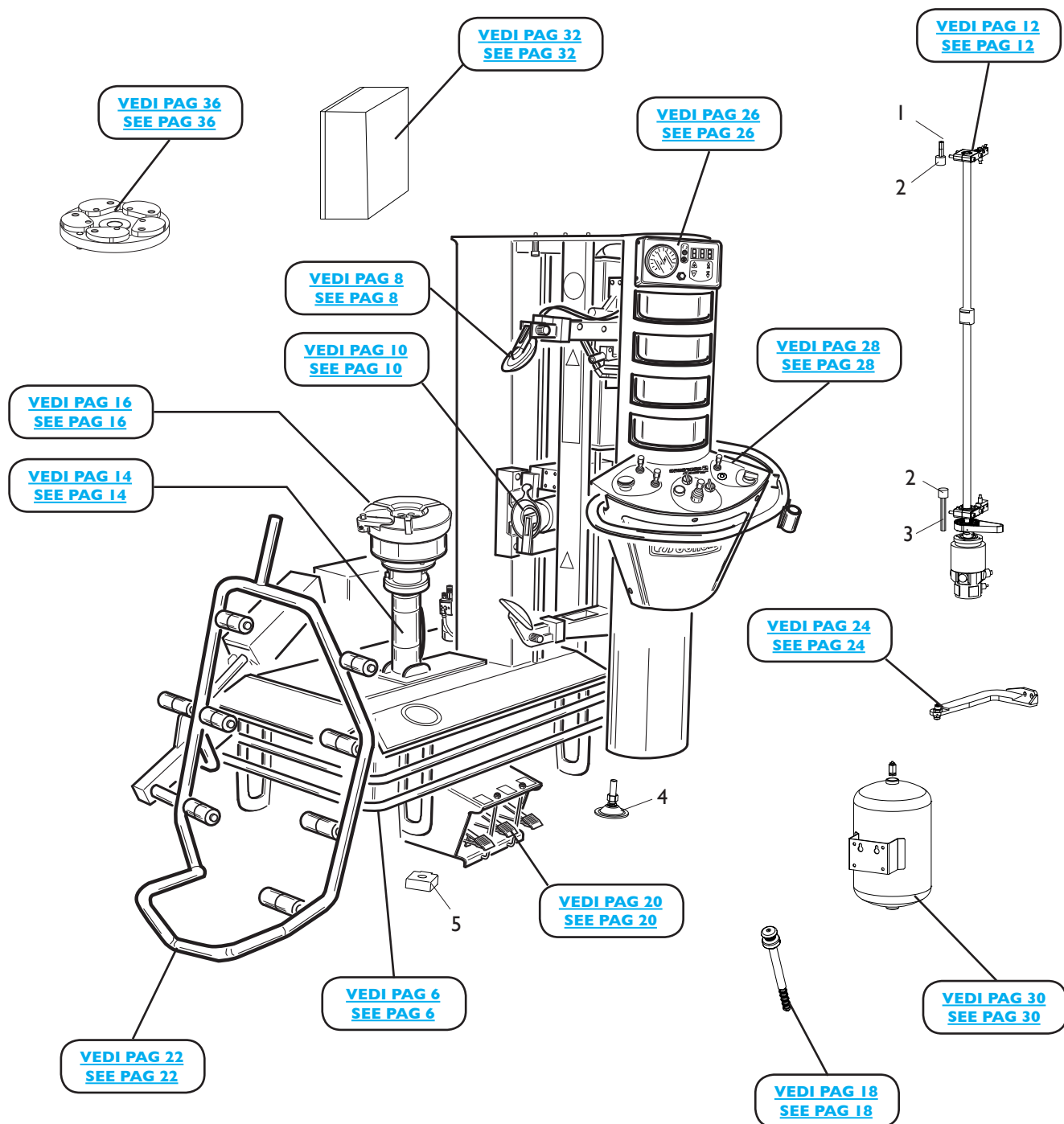
SOMMARIO

CONTENTS

COMPLESSIVO ARTIGLIO MASTER	
ARTIGLIO MASTER OVERALL.....	4
GRUPPO COVER	
COVER GROUP.....	6
GRUPPO STALLONATORE	
BEAD BREAKER GROUP	8
GRUPPO TESTINA	
HEAD GROUP.....	10
GRUPPO TRASLAZIONE VERTICALE	
VERTICAL TRANSLATION GROUP	12
GRUPPO TRASLAZIONE RUOTA	
WHEEL TRANSLATION GROUP	14
GRUPPO AUTOCENTRANTE	
TURNTABLE GROUP	16
MANIGLIA BLOCCAGGIO RUOTA	
HANDLE LOCKING WHEEL	18
GRUPPO PEDALIERA	
PEDAL GROUP	20
GRUPPO SOLLEVATORE	
LIFTER GROUP	22
GRUPPO ROTAZIONE STALLONATORE	
BEAD BREAKER ROTATION GROUP	24
GRUPPO MANOMETRO	
PRESSURE GAUGE GROUP	26
GRUPPO CONSOLLE COMANDI	
COMMAND CONSOLLE GROUP	28
GRUPPO T.I. SYSTEM	
T.I. SYSTEM GROUP	30
GRUPPO IMPIANTO ELETTRICO	
ELECTRIC PANEL GROUP	32
IMPIANTO PNEUMATICO	
PNEUMATIC SYSTEM	34
ACCESSORI	
ACCESSORIES	36

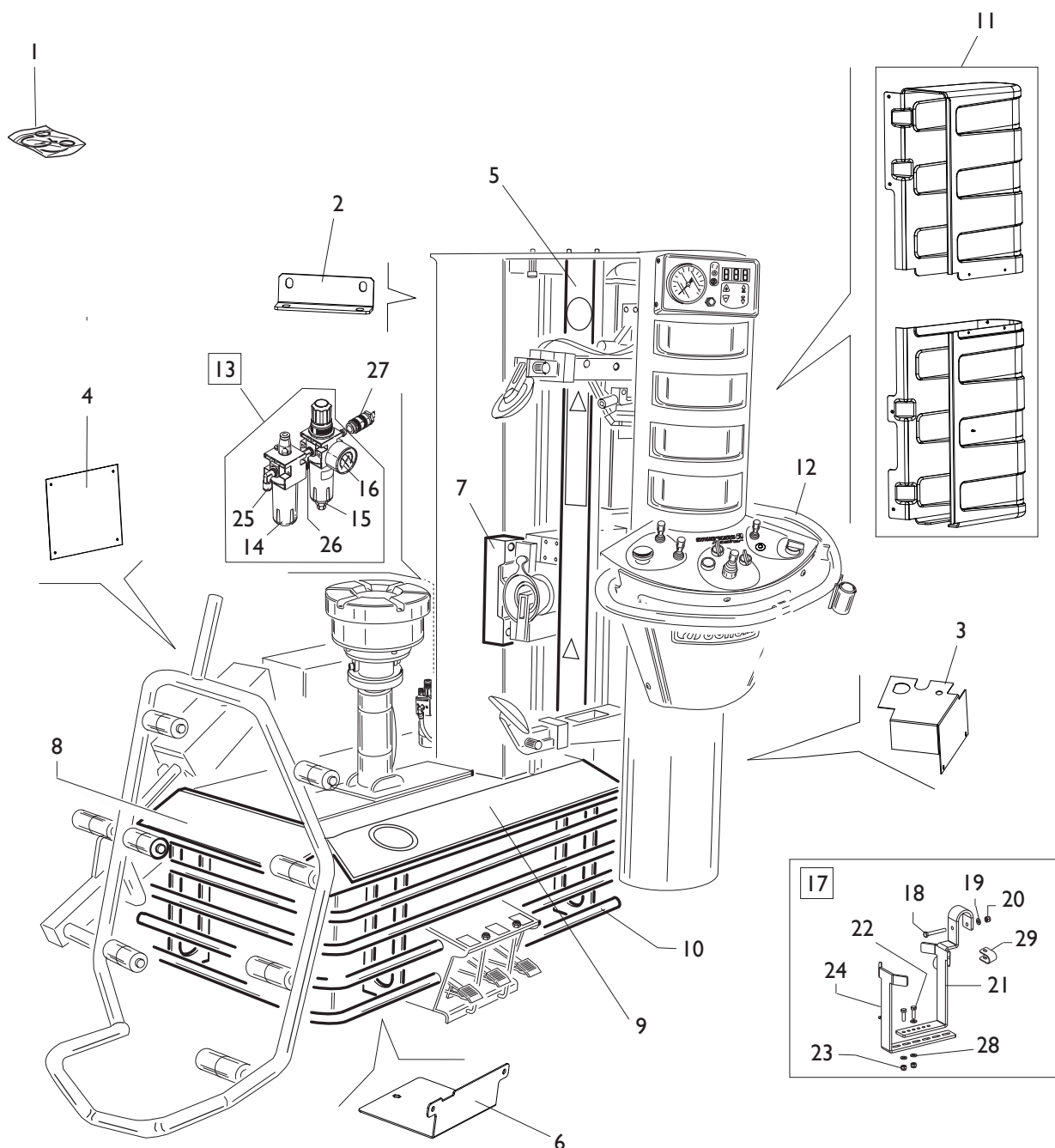
COMPLESSIVO ARTIGLIO MASTER

ARTIGLIO MASTER OVERALL



Rif. Ref.	Codice Code	Descrizione	Description
1	361607	DISTANZIALE M8 H45	SPACER M8 H45
2	461612	ANTIVIBRANTE 30X25 M8X20	ANTIVIBRATION 30X25 M8X20
3	361606	COLONNETA ESAGONALE LUNGA	LONG COLUMN HEX
4	215022	PIEDE REGOLABILE	ADJUSTABLE FOOT
5	422019	PIEDE	FOOT

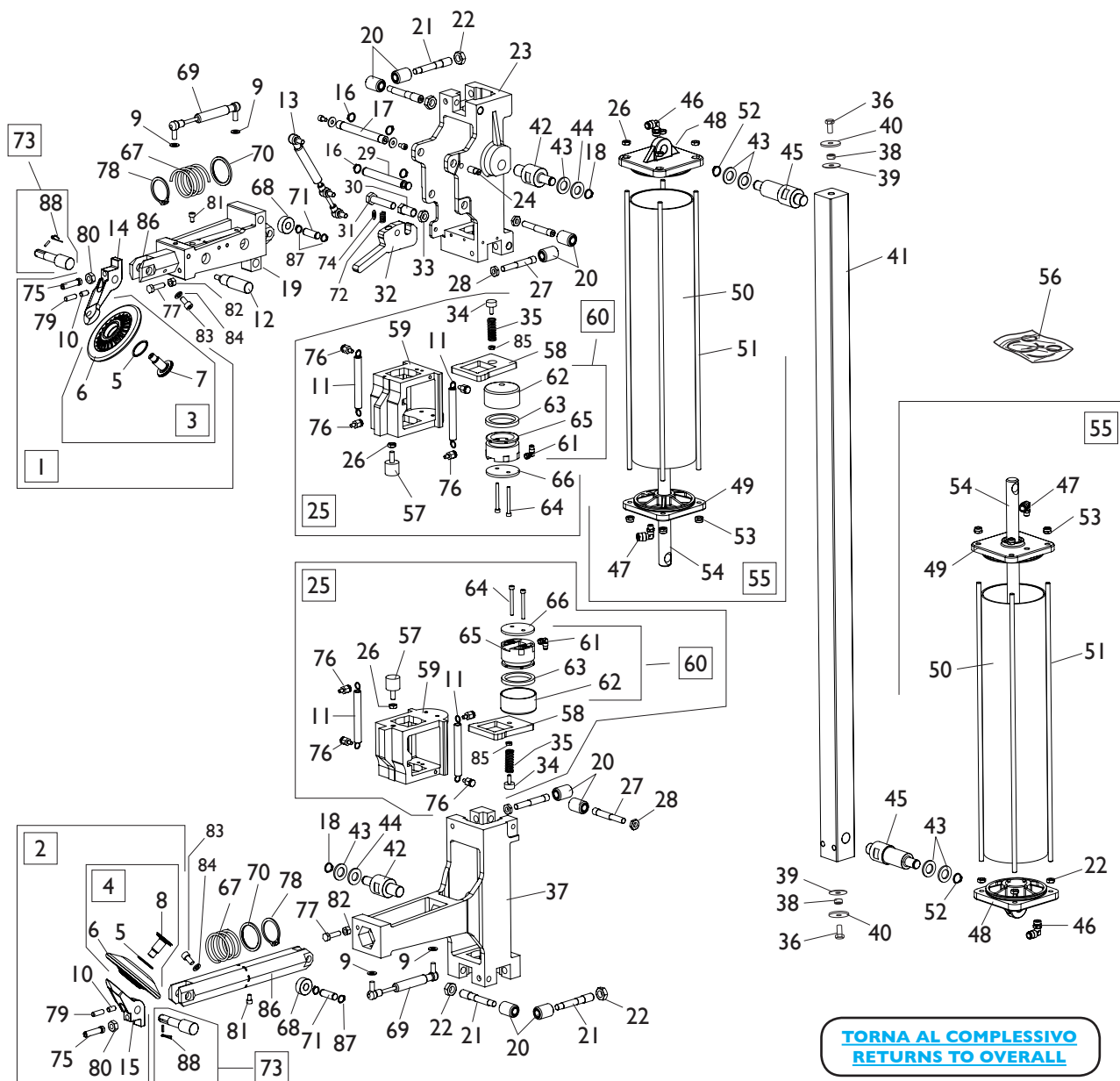
GRUPPO COVER COVER GROUP



**TORNA AL COMPLESSIVO
RETURNS TO OVERALL**

Rif. Ref.	Codice Code	Descrizione	Description
1	5-102924	KIT ADESIVI MASTER	MASTER LABELS KIT
2	4-100181	SUPPORTO CASSETTA ELETTRICA	SUPPORT ELECTRICAL BOX
3	361269	LAMIERA PROTEZIONE PULEGGIA	SHEET METAL PULLEY GUARD
4	361246	COPERCHIO LATERALE	LATERAL COVER
5	263115	LAMIERA PROTEZIONE LUNGA	PROTECTION SHEET LONG
6	4-118132	LAMIERA CHIUSURA PEDALE SOLLEVATORE	SHEET CLOSING PEDAL LIFTER
7	361242	LAMIERA PROTEZIONE TESTINA	SHEET METAL HEAD GUARD
8	4-118569	LAMIERA PROTEZIONE CORTA	PROTECTION SHEET SHORT
9	4-118570	LAMIERA PROTEZIONE LUNGA	PROTECTION SHEET LONG
10	4-104705	PROTEZIONE INFERIORE 3 TUBI	PROTECTION
11	5-101545	PROTEZIONE POSTERIORE (2 PZ)	REAR COVER (2 PZ)
12	4-102637	TUBO PROTEZIONE CONSOLLE	CONSOLLE PROTECTION
13	462929	FILTRO REGOLATORE	FILTER
14	457511	BICCHIERE LUBRIFICATORE	LUBRIFICATOR BOWL
15	457512	BICCHIERE FILTRO	FILTER BOWL
16	3-00488	MANOMETRO D.40	PRESSURE GAUGE D.40
17	5-101236	SUPPORTO GRASSO 1 KG	GREASER SUPPORT 1 KG
17	801261060	SUPPORTO GRASSO 3,5-5 KG	GREASER SUPPORT 3,5-5 KG
18	2-02802	VTE 1/2F M8X50	HEXAGON SOCKET HEAD SCREW 1/2F M8X50
19	2-00212	RONDELLA D.8	WASHER D.8
20	2-01020	DADO ES.N.A. M8	NORMAL AUTOLOCKING HEXAGON NUT M8
21	4-103831	GANCIO	HOOK
22	2-02339	VTE M6X20	HEXAGON SOCKET HEAD SCREW M6X20
23	2-01257	DADO ES.N.A. M6	NORMAL AUTOLOCKING HEXAGON NUT M6
24	4-103832	LAMIERA FERMO	PLATE
25	3-00221	RACCPN-L G1/4C T8	L-FITTING G1/4C T8
26	3-00001	RACCPN-T G1/4 M/M	T-FITTING G1/4
27	3-00257	RACCORDO RAPIDO	FITTING
28	2-00211	RONDELLAD.6	WASHER D.6
29	4-102642	LAMIERA PORTA GRASSO	BRACKET

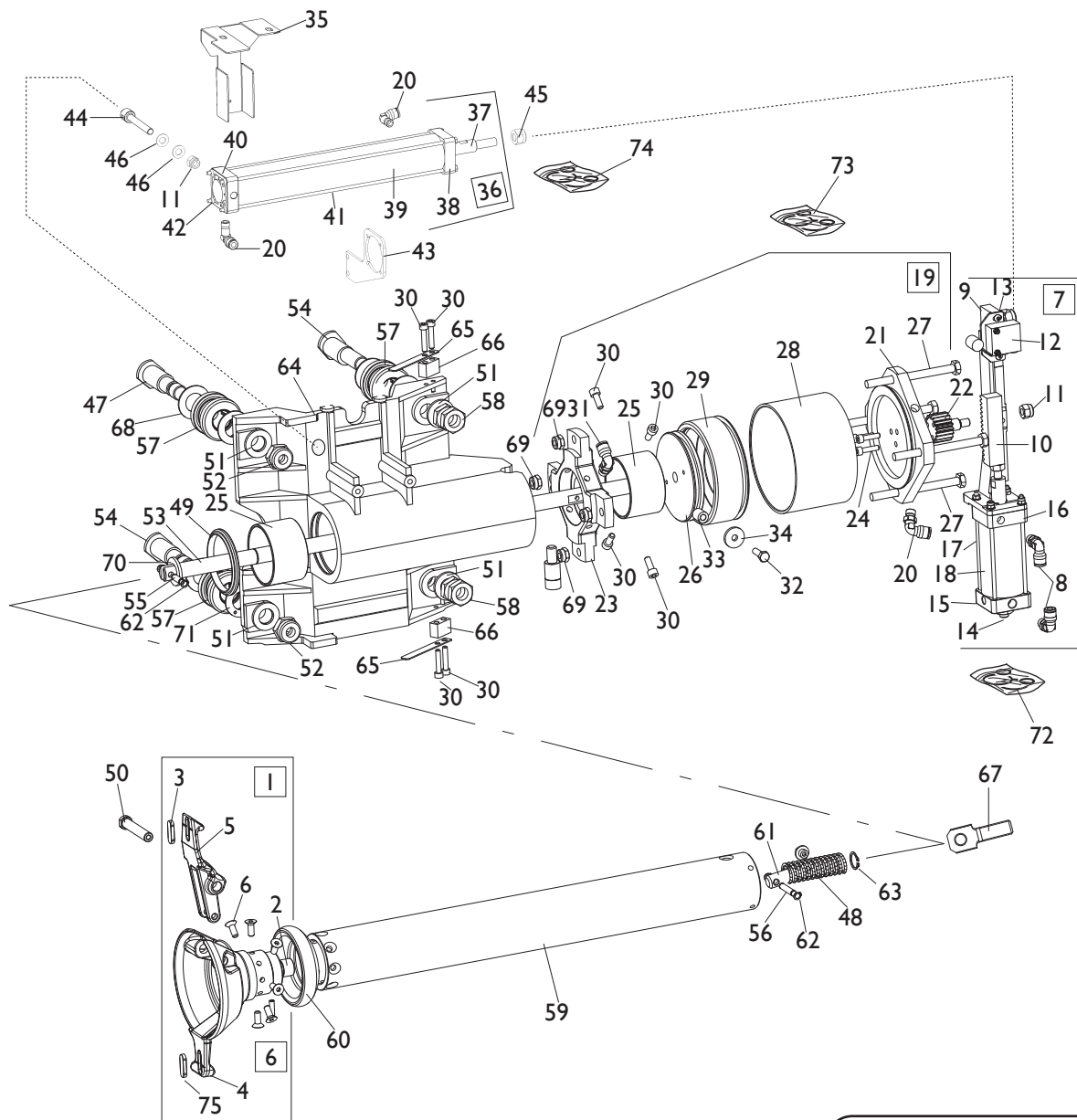
GRUPPO STALLONATORE BEAD BREAKER GROUP



Ref.	Code	Descrizione	Description
1	5-100077	DISCO STALL. SUPERIORE CPL.	UPPER BEAD BREAKER DISC ASSEMBLY
2	5-100078	DISCO STALL. INFERIORE CPL.	LOWER BEAD BREAKER ASSEMBLY
3	5-100687	DISCO SUPERIORE CON PERNO	UPPER DISC WITH PIN
4	5-100686	DISCO INFERIORE CON PERNO	LOWER DISC WITH PIN
5	421833	O-RING D.29,82X2,62	O-RING D.29,82X2,62
6	5-100688	DISCO CON CUSCINETTI	DISC WITH BEARING
7	4-100721	PERNO FISS. DISCO SUPERIORE (DX)	UPPER PIN (DX)
8	4-100720	PERNO FISS. DISCO INFERIORE (SX)	LOWER PIN (SX)
9	2-00212	RONDELLA D.8	WASHER D.8
10	2-71768	VSTEI M8X16	SCREW M8X16
11	461428	MOLLA D.15,8X1,5X99,6	SPRING D.15,8X1,5X99,6
12	4-100168	MANOPOLA GIREVOLE	HANDLE
13	461434	AMMORTIZZATORE STABILUS 1345	STABILUS DAMPER 1345
14	4-100183	SUPPORTO DISCO SUPERIORE	UPPER DISC SUPPORT
15	4-100184	SUPPORTO DISCO INFERIORE	LOWER DISC SUPPORT
16	2-00026	SEEGER D.14	SEEGER D.14
17	361422	PERNO FULCRO	FULCRUM PIN
18	2-01122	SEEGER D.15	SEEGER D.15
19	361411	SUPPORTO BASCULANTE	TILTING SUPPORT
20	361396	RULLO ECCENTRICO	ECCENTRIC ROLLER
21	363190	ECCENTRICO M14	ECCENTRIC M14

Ref.	Code	Descrizione	Description
22	2-71520	DADO ES.B. M14X1,5	LOW HEXAGON NUT M14X1,5
23	361410	SUPPORTO MOBILE	MOBILE SUPPORT
24	361414	ARRESTO	STOPPING
25	262261	MORSETTO CPL.	CLAMP ASSEMBLY
26	2-00156	DADO ES.B. M8	LOW HEXAGON NUT M8
27	363191	ECCENTRICO M10	ECCENTRIC M10
28	2-03127	DADO ES. M10X1,5	HEXAGON NUT M10X1,5
29	361423	PERNO FULCRO	FULCRUM PIN
30	361398	BOCCOLA	BUSHING
31	2-01160	VTE 1/2F M12X55	HEX. SOCKET HEAD SCREW 1/2F M12X55
32	361385	GANCIO STALLONATORE	HOOK
33	2-00158	DADO ES.B. M12	LOW HEXAGON NUT M12
34	461430	ANTIVIBRANTE 18X8,5 M6X16	ANTIVIBRATION 18X8,5 M6X16
35	462646	MOLLA STRANGOLO	SPRING
36	2-01225	VTE M12X25	HEXAGON SOCKET HEAD SCREW M12X25
37	361412	SUPPORTO FISSO	FIXED SUPPORT
38	361419	BOCCOLA D.20X6,5	BUSHING D.20X6,5
39	360474	RONDELLA D.12,5X45X1,5	WASHER D.12,5X45X1,5
40	318216	RONDELLA D.12,5X50X1,5	WASHER D.12,5X50X1,5
41	4-100340	ASTA	ROD
42	361393	ATTACCO CILINDRO	CYLINDER PORT
43	2-01045	RONDELLA D.16	RONDELLA D.16
44	345032	RONDELLA D.15,25X30X3	WASHER D.15,25X30X3
45	361392	ATTACCO CILINDRO	CYLINDER PORT
46	3-00055	RACCPN-LO-G1/4G-T8	FITTING 1/4
47	3-00059	RACCPN-LO-G1/8C-T8	FITTING 1/8
48	4-130671	FLANGIA POST.D.110	REAR FLANGE D.110
49	5-107559	FLANGIA ANT. D.110	FRONT FLANGE D.110
50	4-130680	CAMICIA D.110X495	LINER D.110X495
51	4-130682	TIRANTE M8X531,5	TIE ROD M8X531,5
52	2-01130	SEEGER D.16	SEEGER D.16
53	2-01137	DADO ES.B.A. M8	NORMAL AUTOLOCKING HEXAGON NUT M8
54	4-130681	STELO D.22X549,5	STEM D.22X549,5
55	261424	CILINDRO STALLONATORE	BEAD BREAKER CYLINDER
56	245067	KIT GUARNIZIONI CIL.STALLONATORE	CYLINDER SEALS KIT
57	462713	ANTIVIBRANTE 25X22 M8X20	ANTIVIBRATION 25X22 M8X20
58	361415	PIASTRA STRANGOLO	PLATE
59	361386	MORSETTO	CLAMP
60	261436	PISTONE CPL.	PISTON ASSEMBLY
61	3-00220	RACCPN-L-G1/8C-T4	L-FITTING-G1/8C-T4
62	326537	CILINDRO D.60	CYLINDER D.60
63	443078	GUARNIZIONE D.60X47,6X6,35	SEAL D.60X47,6X6,35
64	2-71755	VTCEI 1/2F M5X50	HEXAGON SOCKET HEAD SCREW 1/2F M5X50
65	443077	PISTONE D.60X38	PISTON D.60X38
66	361399	RONDELLA D.6,5X60X4	WASHER D.6,5X60X4
67	463167	MOLLA BARRA ESAGONALE	SPRING FOR HEXAGON BAR
68	361389	ROTELLA	WHEEL
69	463164	AMMORTIZZATORE STABILUS 4853	STABILUS DAMPER 4853
70	361395	RONDELLA CONT. MOLLA D.43,7X53X3	SPRING WASHER D.43,7X53X3
71	361390	PERNO	PIN
72	461435	MOLLA MANIGLIA	HANDLE SPRING
73	5-102704	PERNO CPL.	PIN ASSEMBLY
74	447879	RONDELLA DI SICUREZZA D.13	SECURITY WASHER D.13
75	362310	REGISTRO	REGISTER
76	361391	SUPPORTO ATTACCO MOLLA	SUPPORT
77	320191	VITE SPECIALE M8X30	SPECIAL SCREW M8X30
78	2-02131	SEEGER D.42	SEEGER D.42
79	2-01290	VSTEI M8X25	SCREW M8X25
80	2-03101	DADO ES. M10X1,25	HEXAGON NUT M10X1,25
81	2-00308	VTCEI M6X10	HEX. SOCKET HEAD SCREW M6X10
82	2-00112	DADO ES. M8	HEXAGON NUT M8
83	2-00319	VTCEI M8X16	HEX. SOCKET HEAD SCREW M8X16
84	2-00205	ROSETTA EL. D.8	ELASTIC WASHER D.8
85	2-00155	DADO ES. M6	HEXAGON NUT M6
86	4-100182	BARRA ESAGONALE	HEXAGON BAR
87	2-00025	SEEGER D.25	SEEGER D.25
88	461504	MOLLA TORSIONE D.9,4X1,3X25	SPRING D.9,4X1,3X25

GRUPPO TESTINA HEAD GROUP



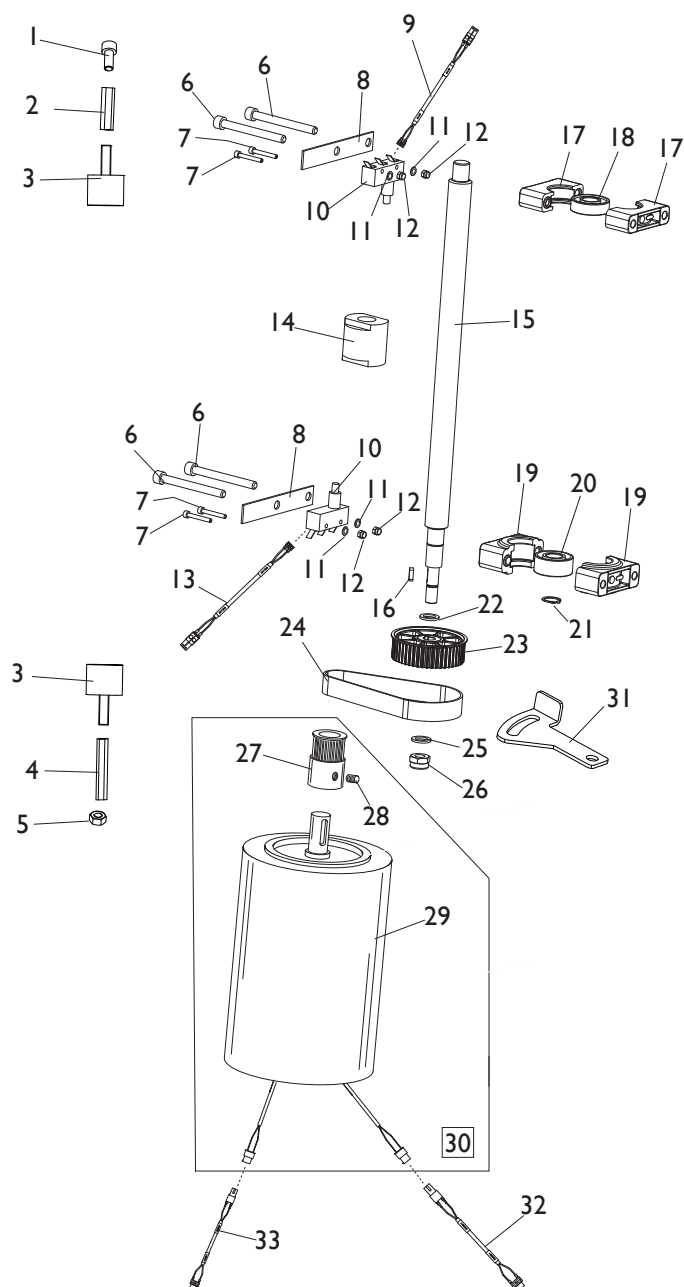
[TORNA AL COMPLESSIVO](#)
[RETURNS TO OVERALL](#)

Ref.	Code	Descrizione	Description
1	262390	TESTINA COMPLETA	HEAD ASSEMBLY
2	3-01158	BOCCOLA D.16X12	BUSHING D.16X12
3	461489	INSERTO TESTINA GIALLO	YELLOW INSERT
4	361404	SUPPORTO TESTINA	HEAD SUPPORT
5	361403	UTENSILE	TOOL
6	2-00711	VTSPei M6X16	CSK FLAT HEAD SCREW SOCKET M6X16
7	5-102716	CIINDRO ROTAZIONE COMPLETO	CYLINDER ROTATION ASSEMBLY
8	3-00220	RACCPN-L-G1/8C-T4	FITTING 1/4
9	5-106874	PIASTRA	PLATE
10	361479	CREMAGLIERA	RACK
11	2-01020	DADO ES.N.A. M8	NORMAL AUTOLOCKING HEXAGON NUT M8
12	3-01408	VALVOLA	VALVE
13	4-102267	PIASTRA FISSAGGIO MICRO	MICRO SUPPORT
14	4-102259	REGISTRO	REGISTER

Ref.	Code	Descrizione	Description
15	4-102255	FLANGIA POSTERIORE D.40	REAR FLANGE D.40
16	463204	FLANGIA ANTERIORE D.40	FRONT FLANGE D.40
17	461509	TIRANTE M4X120	TIE ROD M4X120
18	361508	CAMICIA D.40X79	LINER D.40X79
19	261613	CIL. MOVIMENTO UTENSILE COMPLETO	CYLINDER TOOL MOVING ASSEMBLY
20	3-00217	RACCPN-L-G1/8C-T6	FITTING 1/8
21	361493	FLANGIA POSTERIORE D.110	REAR FLANGE D.110
22	361492	INGRANAGGIO	GEAR
23	361499	ATTACCO PISTONE	PISTON PORT
24	2-00298	VTCEI M5X20	CIRCULAR SOCKET HEAD SCREW M5X20
25	3-01159	BOCCOLA D.60X40	BUSHING D.60X40
26	361495	PISTONE	PISTON
27	2-71394	VTE 1/2F M8X100	HEX. SOCKET HEAD SCREW 1/2F M8X100
28	361483	CAMICIA D.110X70	LINER D.110X70
29	361494	PISTONE	PISTON
30	2-00299	VTCEI M5X25	CIRCULAR SOCKET HEAD SCREW M5X25
31	5-102718	RACCORDO M5 +VITE M5	FITTING M5 WITH SCREW M5
32	2-00360	VTE M6X12	HEXAGON SOCKET HEAD SCREW M6X12
33	361481	BOCCOLA FINE CORSA	BUSHING
34	320574	RONDELLA D.6,5X22X3	WASHER D.6,5X22X3
35	5-105584	LAMIERA+FELTRO	SHEET
36	5-105163	CILINDRO TRASLAZIONE COMPLETO	CYLINDER TRANSLATION ASSEMBLY
37	4-116197	STELO D.15	STEM D.15
38	4-108323	FLANGIA ANTERIORE D.40	FRONT FLANGE D.40
39	4-116196	CAMICIA D.40X273,5	LINER D.40X273,5
40	4-108322	FLANGIA POSTERIORE D.40	REAR FLANGE D.40
41	4-116198	TIRANTE M4X310	TIE ROD M4X310
42	2-01018	DADO ES.N.A M4	NORMAL AUTOLOCKING HEXAGON NUT M4
43	4-116202	SUPPORTO CILINDRO TRASLAZIONE	CYLINDER TRANSLATION SUPPORT
44	4-116200	PERNO CILINDRO TRASLAZIONE	PIN
45	2-01019	DADO ES.N.A. M10	NORMAL AUTOLOCKING HEX. NUT M10
46	2-00212	RONDELLA D.8	WASHER D.8
47	361496	PERNO RULLINO CARRELLO	ROLLER PIN
48	461510	MOLLA	SPRING
49	3-01173	RASCHIATORE	SCRAPER RING
50	361488	FULCRO	FULCRUM
51	2-01045	RONDELLA D.16	WASHER D.16
52	2-71526	DADO ES.B.A. M16	LOWER AUTOLOCKING HEXAGON NUT M16
53	361475	STELO	STEM
54	356012	PERNO ECCENTRICO	ECCENTRIC PIN
55	361486	SPINA CORTA	SHORT PIN
56	361487	SPINA LUNGA	LONG PIN
57	5-102717	RULLO	ROLLER
58	2-00663	DADO ES.B M16	LOWER HEXAGON NUT M16
59	361477	TUBO	TUBE
60	461476	RULLO	ROLLER
61	361484	REGISTRO	REGISTER
62	2-00020	SEEGER D.4	SEEGER D.4
63	2-01130	SEEGER D.16	SEEGER D.16
64	5-106097	CARRELLO CON BOCCOLE	TROLLEY+BUSHES
65	4-102831	MOLLA A BALESTRA	LEAF SPRING
66	4-102830	BLOCCHETTO ATTACCO MOLLA	BLOCK
67	361485	BIELLA	CONNECTING ROD
68	4-103075	RONDELLA DI SPESSORAMENTO	WASHER
69	2-01137	DADO ES.B.A. M8	NORMAL AUTOLOCKING HEXAGON NUT M8
70	307643	RONDELLA D.11,1X17X0,6	WASHER D.11,1X17X0,6
71	3-01195	RONDELLA IN RAME	COPPER WASHER
72	245486	KIT GUARNIZIONI CILINDRO ROTAZIONE	CYLINDER ROTATION SEALS KIT
73	262525	KIT GUARNIZIONI CIL. MOVIMENTO UT.	CYLINDER TOOL MOVING SEALS KIT
74	5-103267	KIT GUARNIZIONI CILINDRO TRASLAZIONE	CYLINDER TRANSLATION SEALS KIT
75	4-121167	INSERTO TESTINA ROSSO	RED INSERT

GRUPPO TRASLAZIONE VERTICALE

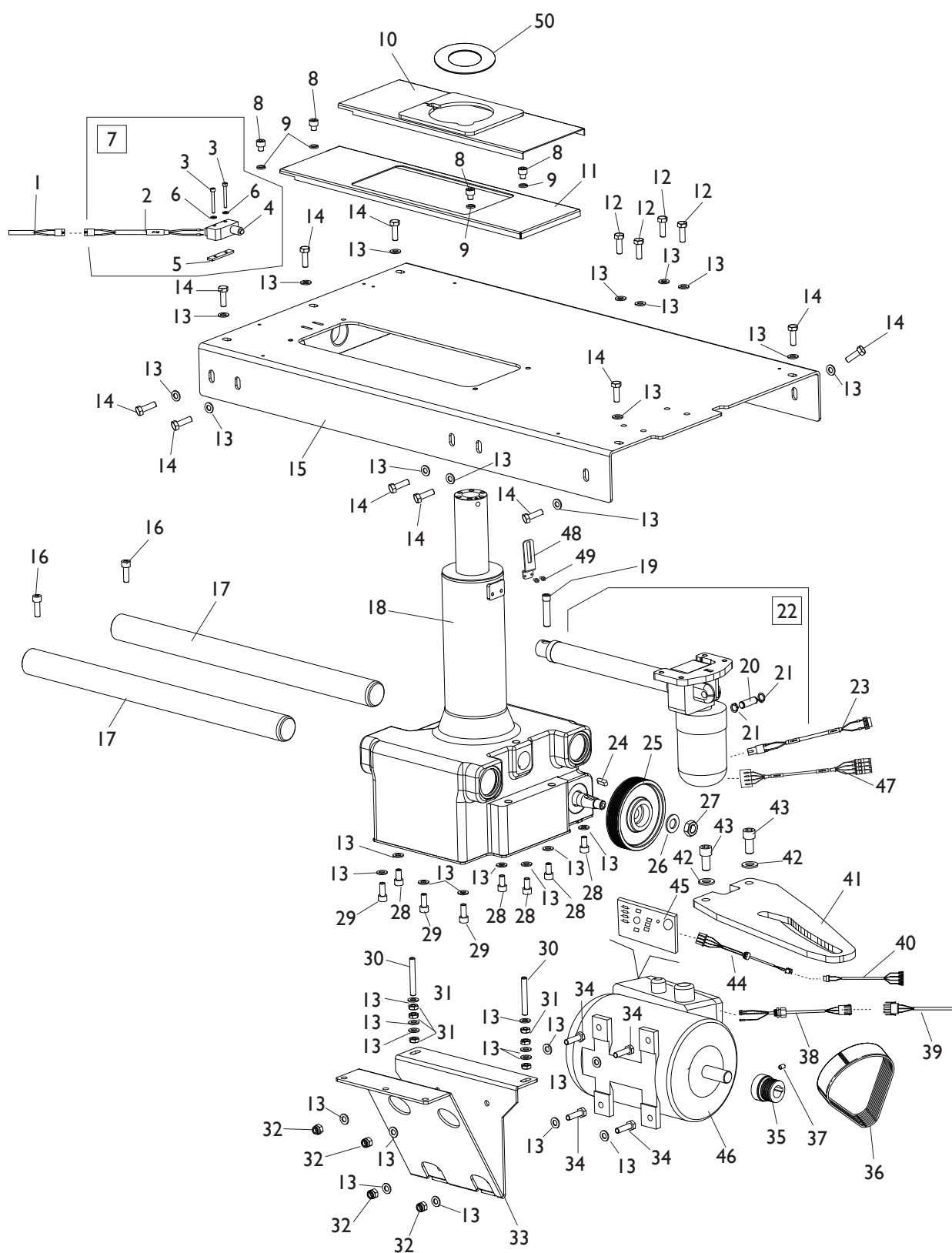
VERTICAL TRANSLATION GROUP



[TORNA AL COMPLESSIVO](#)
[RETURNS TO OVERALL](#)

Rif. Ref.	Codice Code	Descrizione	Description
1	2-00320	VTCEI M8X20	CIRCULAR SOCKET HEAD SCREW M8X20
2	361607	DISTANZIALE M8 H45	SPACER M8 H45
3	461612	ANTIVIBRANTE 30X25 M8X20	ANTIVIBRATION 30X25 M8X20
4	361606	COLONNETA ESAGONALE LUNGA	LONG COLUMN HEX
5	2-00112	DADO ES.A. M8	AUTOLOCKING HEXAGON NUT M8
6	2-03332	VTCEI 1/2F M8X80	CIRCULAR SOCKET HEAD SCREW 1/2F M8X80
7	2-91668	VTCEI M4X30	CIRCULAR SOCKET HEAD SCREW M4X30
8	361608	LAMIERA SOSTEGNO	MICRO SUPPORT
9	5-100667	CAVO COLL.SK - ASSEY UP	PC BOARD CABLE - Y AXIS UP
10	461380	MICRO	MICROSWITCH
11	2-00209	RONDELLA D.4	WASHER D.4
12	2-01018	DADO ES.N.A. M4	NORMAL AUTOLOCKING HEXAGON NUT M4
13	5-100668	CAVO COLL.SK - ASSEY DOWN	PC BOARD CABLE - Y AXIS DOWN
14	361603	CHIOCCIOLA	SPIRAL
15	361598	ALBERO DI TRASLAZIONE	SHAFT VERTICAL TRANSLATION
16	2-03072	LINGUETTA 4X4X14	KEY 4X4X14
17	4-100630	SEMISUPPORTO CUSCINETTO PICCOLO	HALF SMALL BEARING SUPPORT
18	2-03071	CUSCINETTO RADIALE RIGIDO 17X40X12	BEARING 17X40X12
19	4-100631	SEMISUPPORTO CUSCINETTO GRANDE	HALF BIG BEARING SUPPORT
20	2-03070	CUSCINETTO OBLIQUO 17X40X17,5	BEARING 17X40X17,5
21	2-00889	SEEGER D.17	SEEGER D.17
22	3-01677	RONDELLA D.17X24X0,1	WASHER D.17X24X0,1
23	4-102438	PULEGGIA CONDOTTA Z48	PULLEY Z48
24	3-01477	CINGHIA DENTATA	TOOTHED BELT
25	434207	RONDELLA D.13X20X2	RONDELLA D.13X20X2
26	2-01276	DADO ES.B.A. M12	LOW AUTOLOCKING HEXAGON NUT M12
27	4-102630	PULEGGIA MOTRICE Z18	PULLEY Z18
28	2-02401	VSTEI M6X12	CSK SCREW SOCKET M6X12
29	5-122229	MOT.AUTOFR.B14/63 48V D.14	BRAKE MOTOR B14/63 D.14(4P)
30	5-102715	MOTORE TRASLAZ. VERTICALE COMPLETO	MOTOR TRANSLATON ASSEMBLY
31	4-102194	TENDICINGHIA	BELT TENSIONER
32	5-100689	CAVO COLL.SK - BRAKEY	PC BOARD CABLE - BRAKEY
33	5-100663	CAVO COLL.SK - MOTORE ASSEY	PC BOARD CABLE - ASSEY MOTOR

GRUPPO TRASLAZIONE RUOTA WHEEL TRANSLATION GROUP

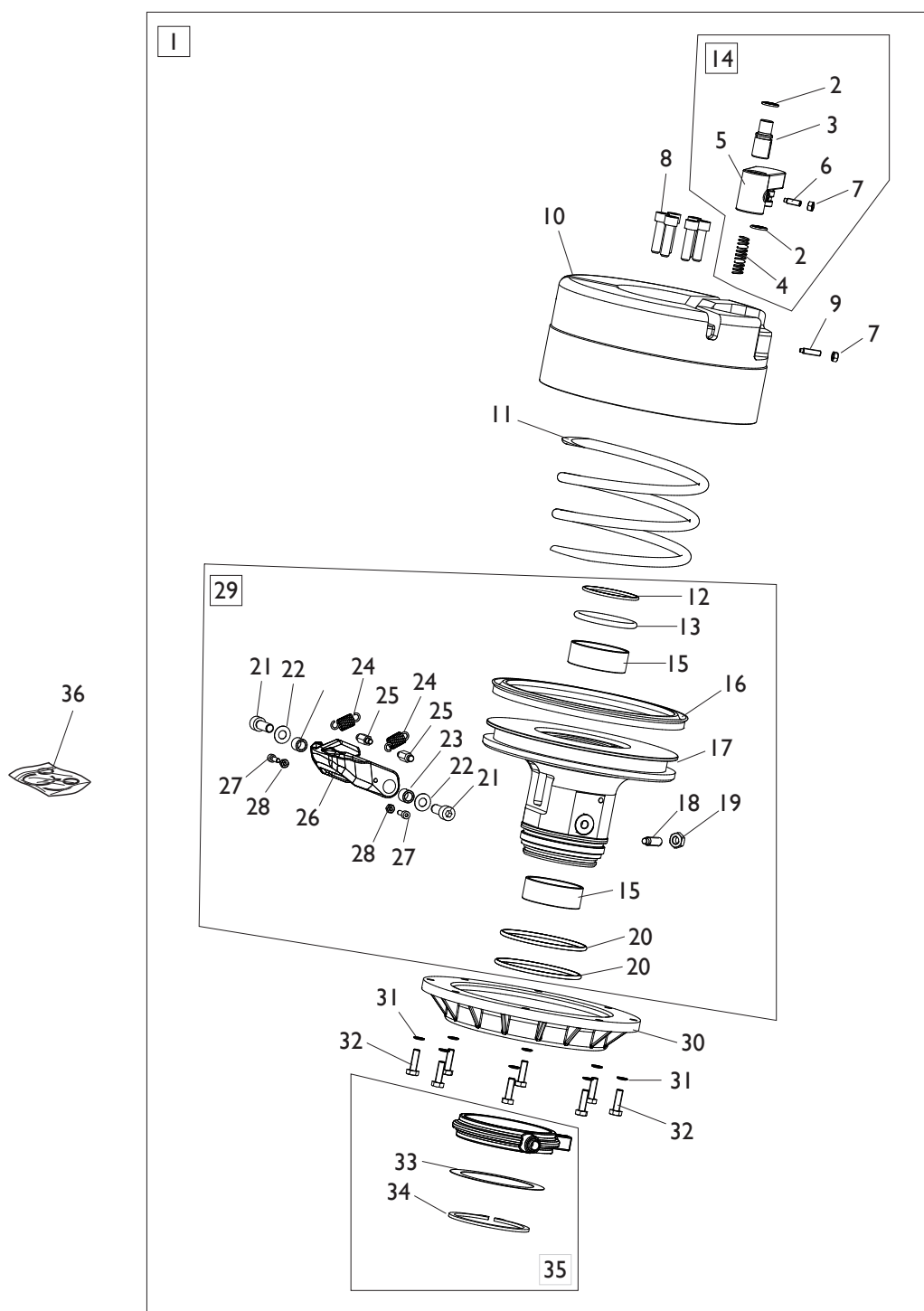


[TORNA AL COMPLESSIVO](#)
[RETURNS TO OVERALL](#)

Rif. Ref.	Codice Code	Descrizione	Description
1	5-100669	CAVO COLL.SK - MICRO AZZERAMENTO	PC BOARD CABLE - MICRO RESET
2	5-102151	CAVO MICRO AZZERAMENTO	MICRO RESET CABLE
3	2-02078	VTCEI 1/2F M4X30	CIRCULAR SOCKET HEAD SCREW 1/2F M4X30
4	4-106284	MICRO	MICROSWITCH
5	361554	PIASTRINA MICRO	MICRO SUPPORT
6	2-00209	RONDELLA D.4	WASHER D.4
7	5-102170	KIT MICRO AZZERAMENTO	KIT MICRO RESET
8	4-103071	VTCEI SPECIALE M8X8	SPECIAL CIRC. SOCKET HEAD SCREW M8X8
9	2-02779	ROSETTA D.8	WASHER D.8
10	4-101410	PROTEZIONE TRASLAZIONE	TRANSLATION PROTECTION
11	4-100307	LAMIERA INFERIORE	REAR SHEET
12	2-00372	VTE M8X16	HEXAGON SOCKET HEAD SCREW M8X16
13	2-01114	RONDELLA D.8	WASHER D.8
14	2-01131	VTE M8X22	HEXAGON SOCKET HEAD SCREW M8X22
15	4-118100	COPERCHIO	COVER
16	2-00321	VTCEI M8X25	CIRCULAR SOCKET HEAD SCREW M8X25
17	4-100329	GUIDA ORIZZONTALE	HORIZONTAL GUIDE
18	5-190775	RIDUTTORE CPL.	GEARBOX ASSEMBLY
19	361552	VSTEI M12X1,25	CSK SCREW SOCKET M12X1,25
20	4-103512	PERNO ATTUATORE	ACTUATOR PIN
21	2-00023	SEEGER D.10	SEEGER D.10
22	5-102709	ATTUATORE COMPLETO	ACTUATOR ASSEMBLY
23	5-100662	CAVO COLL.SK - ATTUATORE ASSE X	PC BOARD CABLE - X AXIS ACTUATOR
24	2-01950	LINGUETTA D.6X6X18	KEY D.6X6X18
25	354082	PULEGGIA RIDUTTORE D.110	GEARBOX PULLEY D.110
26	2-00215	RONDELLA D.14	WASHER D.14
27	2-00941	DADO ES.B. M14	LOW HEXAGON NUT M14
28	2-00319	VTCEI M8X16	CIRCULAR SOCKET HEAD SCREW M8X16
29	2-00320	VTCEI M8X20	CIRCULAR SOCKET HEAD SCREW M8X20
30	2-02683	VSTEI M6X10	CSK SCREW SOCKET M6X10
31	2-00156	DADO ES.B. M8	LOW HEXAGON NUT M8
32	2-01020	DADO ES.N.A. M8	NORMAL AUTOLOCKING HEXAGON NUT M8
33	4-102396	SUPPORTO MOTORE	MOTOR SUPPORT
34	2-00322	VTCEI M8X30	CIRC. SOCKET HEAD SCREW M8X30
35	4-104329	PULEGGIA MOTORE	MOTOR PULLEY
36	3-00575	CINGHIA	BELT
37	2-00544	VSTEI M6X10	CSK SCREW SOCKET M6X10
38	4-111587	CAVO ALIMENTAZIONE MOTOINVETER	POWER CABLE MOTOINVERTER
39	5-105010	CAVO ALIM.MOTOINV - SK	MOTOINVERTER POWER CABLE - PC BOARD
40	5-100723	CAVO COMANDI PEDALIERA	PEDAL COMMAND CABLE
41	4-102727	MOVIMENTAZIONE A CAMMA	HANDLING CAM
42	2-00214	RONDELLA D.12	WASHER D.12
43	2-03144	VTCEI M12X1,25X25	CIRC. SOCKET HEAD SCREW M12x1,25x25
44	4-109895	CAVO COMANDI MOTORE	MOTOR COMMAND CABLE
45	4-115395	SCHEDA MOTOINVERTER 230V	MOTOINVERTER PC BOARD 230V
45	4-111585	SCHEDA MOTOINVERTER 115V	MOTOINVERTER PC BOARD 115V
46	5-104966	MOTOINVERTER CON CAVI 230V	MOTOINVERTER ASSEMBLY 230V
46	5-103599	MOTOINVERTER CON CAVI 115V	MOTOINVERTER ASSEMBLY 115V
47	5-100664	CAVO COLL.SK - ENCODER ATTUATORE	PC BOARD CABLE - ACTUATOR ENCODER
48	4-102783	ANTIROTAZIONE	BRACKET
49	2-00853	VTCEI M5X12	HEX. SOCKET HEAD SCREW M5X12
50	4-100767	COPERTURA	COVER

GRUPPO AUTOCENTRANTE

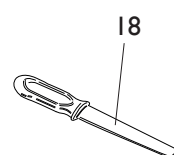
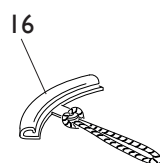
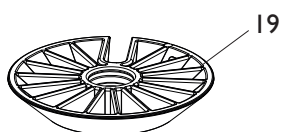
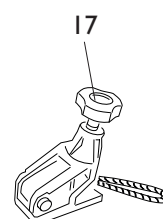
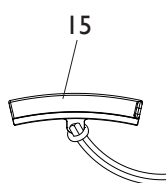
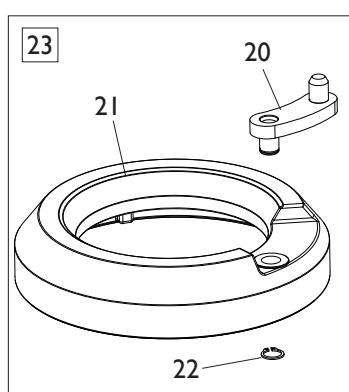
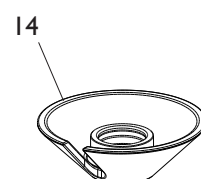
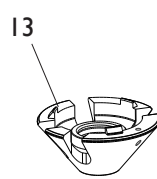
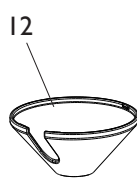
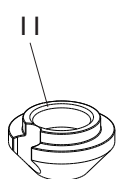
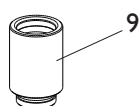
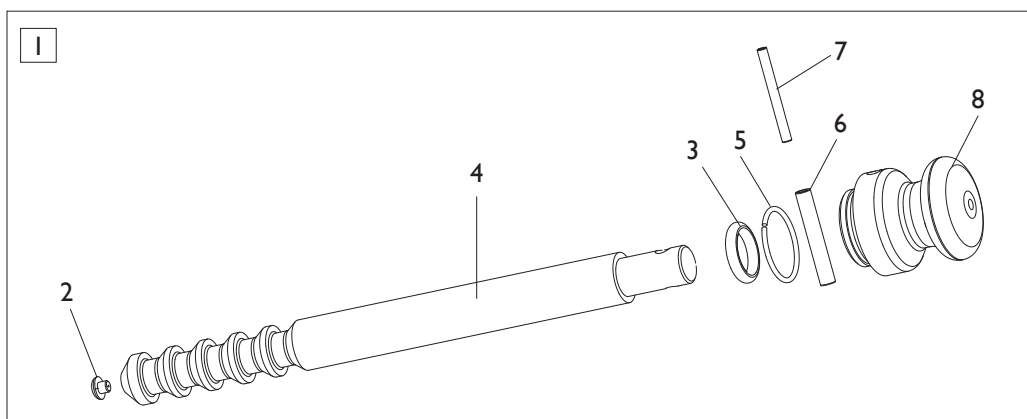
TURNTABLE GROUP



[TORNA AL COMPLESSIVO](#)
[RETURNS TO OVERALL](#)

Rif. Ref.	Codice Code	Descrizione	Description
1	5-102705	AUTOCENTRANTE COMPLETO	TURNTABLE ASSEMBLY
2	424630	OR D.12,42X1,78	O-RING D.12,42X1,78
3	4-102326	PERNO TRASCINATORE	PIN
4	4-102331	MOLLA PERNO TRASCINATORE	PIN SPRING
5	4-103143	LEVA	LEVER
6	2-02560	VSTEI M5X16	CSK SCREW SOCKET M5X16
7	2-00676	DADO ES.N. M5	NORMAL HEXAGON NUT M5
8	4-102325	VTCEI SPECIALE M8X30	SPEC. HEX. HEAD SCREW M8X70
9	2-03337	VSTEI M5X20	SCREW M5X20
10	4-102070	CENTRAGGIO RUOTE	TURNTABLE
11	4-102327	MOLLA COMPR. D.143X9X110	COMPRESSOR SPRING D.143X9X110
12	3-01150	O-RING D.48,89X2,62	O-RING D.48,89X2,62
13	3-01152	GUARNIZIONE M5 D.60X50X5	SEAL M5 D.60X50X5
14	5-102707	KIT LEVA CON PERNO	LEVER KIT
15	3-00647	BOCCOLA D.50X20	BUSH D.50X20
16	433339	GUARNIZIONE D.184X165X11,11	SEAL D.184X165X11,11
17	4-106066	PISTONE D.184X117	PISTON D.184X117
18	2-01322	VTSTEI M8X25	SCREW M8X25
19	2-00156	DADO ES. M8	HEXAGON NUT M8
20	438689	O-RING D.75,80X3,53	O-RING D.75,80X3,53
21	2-03348	VTCEI M8X22	HEX. SOCKET HEAD SCREW M8X22
22	309358	RONDELLA D.8X16,5X0,5	WASHER D.8X16,5X0,5
23	361278	DISTANZIALE D.11,85X8X10	SPACER D.11,85X8X10
24	3-10008	MOLLA TRAZIONE	SPRING
25	4-130262	GANCIO ATTACCO MOLLA	SPRING HOOK
26	4-106063	CRICCHETTO	HOOK
27	2-00733	VTCEI M4X12	HEX. SOCKET HEAD SCREW M4X12
28	2-00143	DADO ES. M4	HEXAGON NUT M4
29	5-102683	KIT PISTONE	PISTON KIT
30	4-101891	COPERCHIO CILINDRO	CYLINDER COVER
31	4-105166	RONDELLA D.6,4X10X1,3	WASHER D.6,4X10X1,3
32	2-03471	VTE M6X20	HEXAGON HEAD SCREW M6X20
33	4-104408	RONDELLA D.70X90X0,5	WASHER D.70X90X0,5
34	2-71590	SEEGER D.70	SEEGER D.70
35	5-102706	RACCORDO GIREVOLE	ROTATING JOINT
36	5-102708	KIT GUARNIZIONI CILINDRO	CYLINDER SEALS KIT

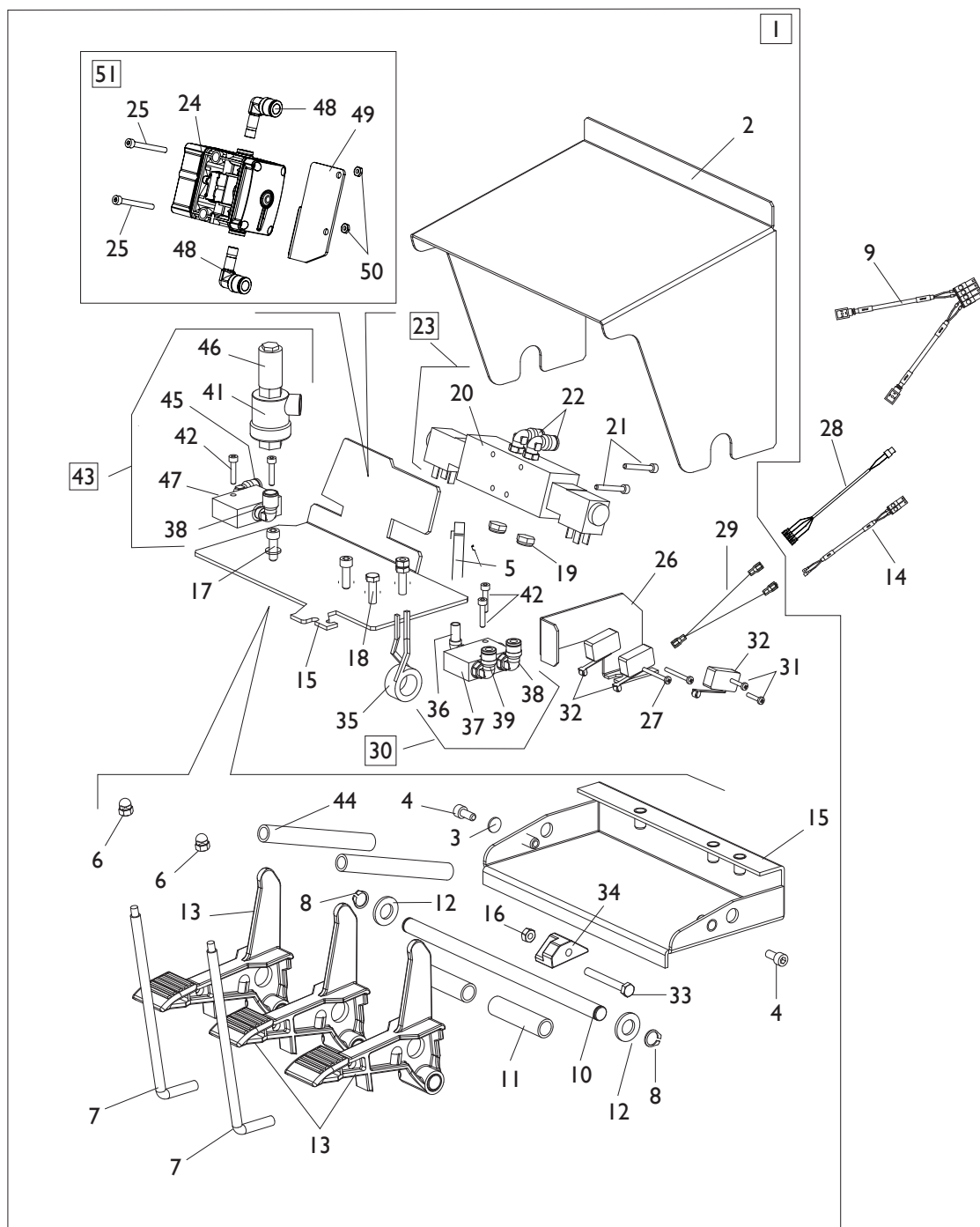
MANIGLIA BLOCCAGGIO RUOTA HANDLE LOCKING WHEEL



[TORNA AL COMPLESSIVO](#)
[RETURNS TO OVERALL](#)

Rif. Ref.	Codice Code	Descrizione	Description
1	5-100683	MANIGLIA BLOCCAGGIO RUOTA	HANDLE LOCKING WHEEL ASSEMBLY
2	461560	PROTEZIONE	RUBBER
3	3-01164	O-RING D.20X6	O-RING D.20X6
4	4-102345	BARRA D.26,5	BAR D.26,5
5	2-03236	SEEGER D.40	SEEGER D.40
6	2-01932	SPINA D.8X55	PIN D.8X55
7	2-02896	SPINA D.5X55	PIN D.5X55
8	362464	IMPUGNATURA	KNOB
9	263436	PROLUNGA MANIGLIA	HANDLE EXTENTION
10	462414	CONO D.54	CONE D.54
11	4-118295	CONO D.74	CONE D.74
12	461668	CUFFIA PROTEZIONE CONO D.120	PROTECTION CONE D.120
13	4-102353	CONO D.120	CONE D.120
14	4-102346	CONO D.145	CONE D.145
15	5-491007	KIT 3 PARABORDI CORTI	THREE SHORT FENDER KIT
16	2201716	KIT 3 PARABORDI	TREE FENDER KIT
17	262417	PINZA RUN FLAT	CLAMP RUN FLAT
18	4-405496	PROTEZIONE TALLONE	HEEL PROTECTION
19	461667	CONO D.187	CONE D.187
20	4-103110	MANOVELLA	CRANK
21	4-102360	ANELLO DISTANZIALE	SPACER RING
22	2-00026	SEEGER D.14	SEEGER D.14
23	5-100690	ANELLO DISTANZIALE COMPLETO	SPACER RING ASSEMBLY

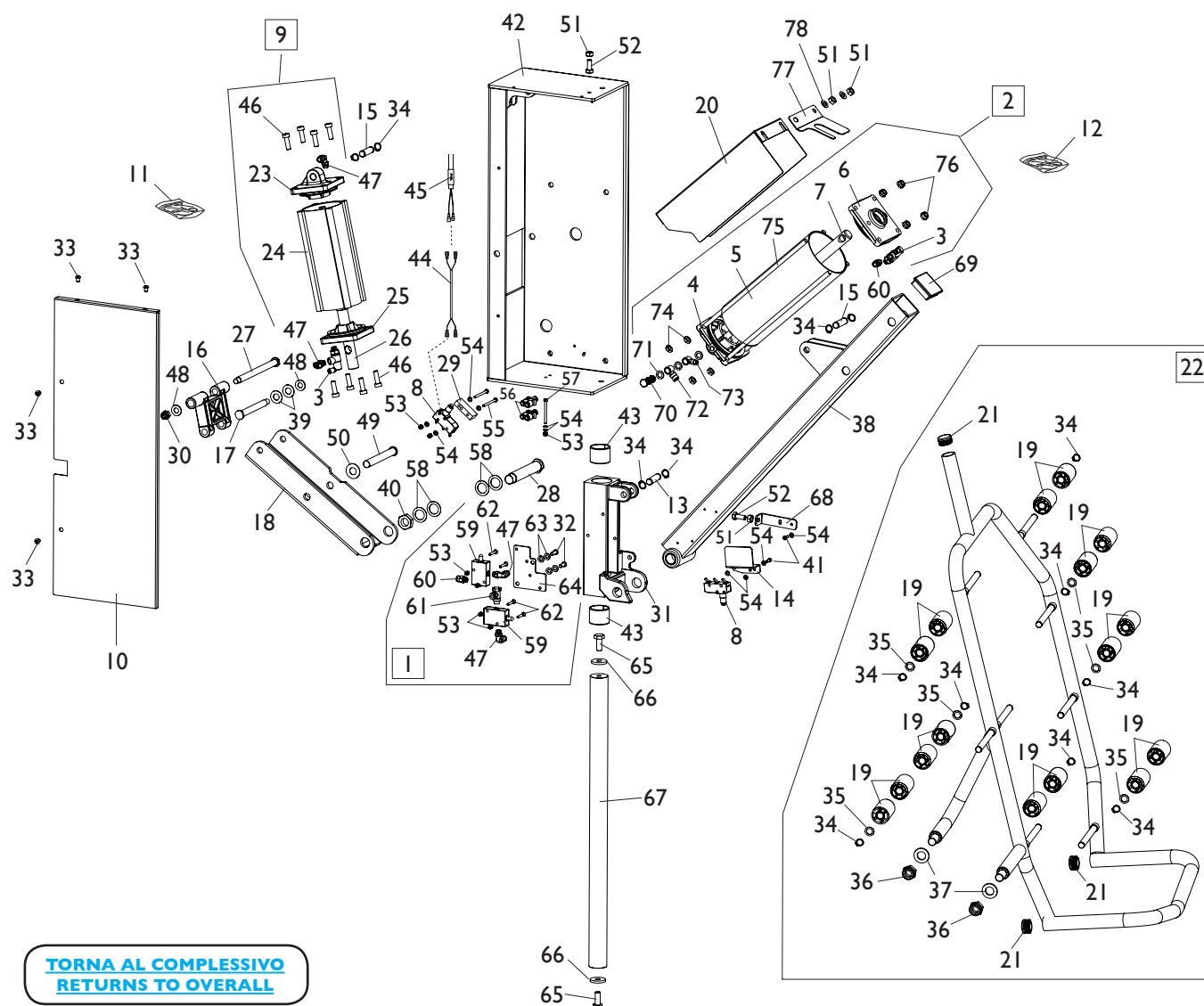
GRUPPO PEDALIERA PEDAL GROUP



[TORNA AL COMPLESSIVO](#)
[RETURNS TO OVERALL](#)

Rif. Ref.	Codice Code	Descrizione	Description
1	5-100735	PEDALIERA COMANDI COMPLETA	PEDAL ASSEMBLY
2	361536	COPERCHIO PEDALIERA	PEDAL COVER
3	2-00211	RONDELLA D.6	WASHER D.6
4	2-00309	VTCEI M6X16	CIRC. SOCKET HEAD SCREW M6X16
5	5-100129	TUBO DI GONFIAGGIO	INFLATING HOSE
6	2-00104	DADO ES.CIECO M6	HEXAGON NUT M6
7	361537	TONDO D.8	PIN D.8
8	2-00025	ANELLO D.12	SEGER D.12
9	5-100660	CAVO COLL.SK - EV1/EV2	PC BOARD CABLE - EV1/EV2
10	4-102179	PERNO	PIN
11	361534	DISTANZIALE PEDALI D.16X64	PEDALS SPACER D.16X64
12	2-00214	RONDELLA D.14	WASHER D.14
13	5-102714	PEDALE	PEDAL
14	5-100722	CAVO ROT.AUTOCENTRANTE	CABLE TURNTABLE ROTATION
15	5-101167	BASAMENTO PEDALIERA	PEDAL BASE
16	2-00150	DADO ES.N. M6	NORMAL HEXAGON NUT M6
17	2-00310	VTCEI M6X20	CIRC. SOCKET HEAD SCREW M6X20
18	2-00362	VTE M6X20	HEX. SOCKET HEAD SCREW M6X20
19	3-00181	SILENZIATORE 1/8	SILENCER 1/8
20	3-01168	ELETTROVALVOLA	ELECTRIC VALVE
21	2-91668	VTCEI M4X30	CIRC. SOCKET HEAD SCREW M4X30
22	3-00053	RACCPN-LO-G1/8G-T6	FITTING 1/8
23	5-100625	VALVOLA MOVIMENTO UTENSILE	VALVE TOOL MOVEMENT
24	3-03313	LIMITATORE DI GONFIAGGIO	LIMITER INFLATION
25	2-00851	VTCEI 1/2F M4X40	CIRC. HEAD SCREW 1/2F M4X40
26	361524	LAMIERA SUPPORTO MICRO	MICRO SUPPORT
27	2-00578	VTCIC M3X30	SCREW M3X30
28	5-100723	CAVO COMANDI PEDALIERA	PEDAL COMMAND CABLE
29	4-101698	CAVO PONTE	CABLE
30	5-100628	VALVOLA DI GONFIAGGIO	INFLATING VALVE
31	2-00576	VTCIC M3X20	SCREW M3X20
32	440874	MICRO	MICROSWITCH
33	2-00368	VTE M6X50	HEX. SOCKET HEAD SCREW M6X60
34	461535	BLOCCETTO MICRO	BLOCK
35	4-109664	MOLLA COMANDO INTERRUETTORE	COMMAND SPRING
36	3-01176	RACCPN-RESCA-L-G1/8-T6	RESCA FITTING 1/8
37	3-01178	VALVOLA	VALVE
38	3-00218	RACCPN-L-G1/8C-T8	FITTING 1/8
39	3-00049	RACCPN-LO-G1/8G-T8	FITTING 1/8
41	3-00317	VALVOLA G1/4	VALVE G1/4
42	2-00291	VTCEI M4X20	CIRC. SOCKET HEAD SCREW M4X20
43	5-102713	VALVOLA SCARICO RAPIDO	VALVE ASSEMBLY
44	410628	MOLLA D.14X2X105	SPRING D.14X2X105
45	3-00138	RACCPN-L-G1/8"C- G1/8" M/F	L-FITTING-G1/8"C- G1/8" M/F
46	3-00186	SILENZATORE G1/4	SILENCER G1/4
47	3-00365	VALVOLA 1/8	VALVE 1/8
48	3-03504	RACCPN-GOMITO-T-T-T8	FITTING T-T-T8
49	4-121270	STAFFA VALVOLA GONFIAGGIO	BRACKET
50	2-02804	DADO ES. M4	HEXAGON NUT M4
51	5-107578	LIMITATORE DI GONFIAGGIO CPL.	LIMITER INFLATION ASSEMBLY

GRUPPO SOLLEVATORE LIFTER GROUP

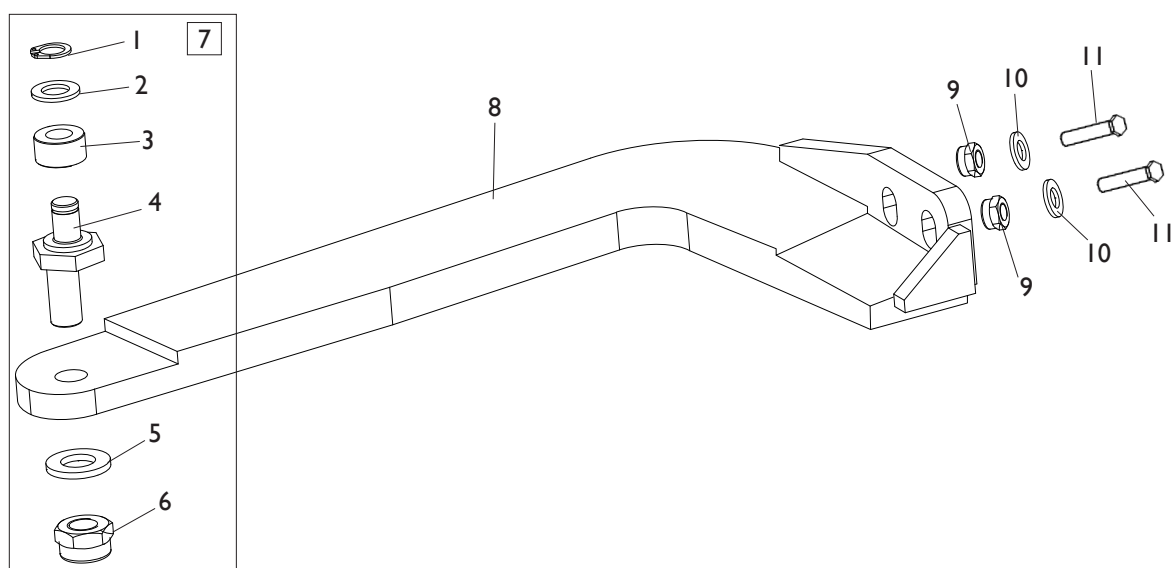


**TORNA AL COMPLESSIVO
RETURNS TO OVERALL**

Ref.	Code	Descrizione	Description
1	5-101522	GRUPPO VALVOLE	VALVES ASSEMBLY
2	5-101184	CILINDRO D.95X217,5	CYLINDER ASSEMBLY D.95X217,5
3	3-01175	VLAVOLA PILOTA	VALVE
4	4-116980	FLANGIA POST. D.95	REAR FLANGE D.95
5	4-116999	CAMICIA D.95X256,5	LINER D.95X256,5
6	5-105114	FLANGIA ANT. D.95	FRONT FLANGE D.95
7	4-116979	STELO D.20X364	STEM D.20X364
8	461380	MICRO 16A	MICRO 16A
9	5-101529	CILINDRO D.75X158	CYLINDER D.75X158
10	361356	LAMIERA DI CHIUSURA	METAL SHEET
11	262382	KIT GUARNIZIONI CILINDRO D.75	SEALS KIT FOR CYLINDER D.75
12	241484	KIT GUARNIZIONI CILINDRO D.95	SEALS KIT FOR CYLINDER D.95
13	361350	PERNO FLANGIA	FLANGE PIN
14	361345	LAMIERA SUPPORTO MICRO	MICRO PLATE
15	361349	PERNO STELO	STEM PIN
16	4-100627	BIELLA CORTA	SHORT TRACE
17	361348	PERNO FULCRO D.12	FULCRUM PIN D.12
18	361333	BIELLA	TRACE

Ref.	Code	Descrizione	Description
19	4-103619	RULLO SOLLEVATORE	ROLLER
20	4-103618	LAMIERA PROTEZIONE	CYLINDER COVER
21	456036	TAPPO TONDO D.25 H.14	ROUND CAP D.25 H.14
22	5-101241	SUPPORTO RUOTA CPL.	WHEEL SUPPORT ASSEMBLY
23	4-130464	FLANGIA POST. D.81X81X56,5	REAR FLANGE D.81X81X56,5
24	4-130461	CAMICIA D.75X201	LINER D.75X201
25	5-121316	FLANGIA ANT. D.81X81X32,5	FRONT FLANGE D.81X81X32,5
26	4-130458	STELO D.20X327,5	STEM D.20X327,5
27	361353	PERNO	PIN
28	361346	PERNO FULCRO D.20	FULCRUM PIN D.20
29	361371	PIASTRA DISTANZIALE 45X20	SPACER 45X20
30	422289	DADO ES.A. M10	AUTOLOCKING HEXAGON NUT M10
31	261732	SUPPORTO CON BOCCOLE	SUPPORT WITH BUSH
32	2-02155	VTBEI M6X16	SCREW M6X16
33	2-02151	VTBEI M6X8	SCREW M6X8
34	2-00025	SEEGER D.12	SEEGER D.12
35	315274	RONDELLA D.12X18X0,5	WASHER D.12X18X0,5
36	2-71526	DADO ES.A. M16	AUTOLOCKING HEAXAGON NUT M16
37	2-01045	RONDELLA D.17	WASHER D.17
38	4-103621	TUBO SOLLEVATORE	LIFTER ARM
39	462117	RONDELLA D.12X24X0,5	WASHER D.12X24X0,5
40	2-01092	DADO ES. M18X1,5	HEXAGO NUT M18X1,5
41	2-71389	VTE 1/2F M4X45	HEXAGON HEAD SCREW 1/2F M4X45
42	261370	LAMIERA TELAIO	BODY
43	3-00623	BOCCOLA D.35X39X30	BUSH D.35X39X30
44	262169	CAVO 2XI L.1000mm	CABLE 2XI L.1000mm
45	5-100666	CAVO COLL. SK - MICRO SOLLEVATORE	PC BOARD CABLE - MICRO LIFTER
46	2-02301	VTCEI B. M8X25	HEX. SOCKET HEAD SCREW M8X25
47	3-00053	RACCPN-LO- G1/8-T6	LO-FITTING-G1/8-T6
48	2-00213	RONDELLA D.10	WASHER D.10
49	361347	PERNO FULCRO D.14	FULCRUM PIN D.14
50	354594	RONDELLA D.14,2X30X1	WASHER D.14,2X30X1
51	2-00151	DADO ES. M8	HEXAGON NUT M8
52	2-00373	VTE M8X20	HEXAGON HEAD SCREW M8X20
53	2-01018	DADO ES.A. M4	AUTOLOCKING HEX. NUT M4
54	2-00209	RONDELLA D.4	WASHER D.4
55	2-02207	VTE M4X50	HEXAGON HEAD SCREW M4X50
56	3-01866	RACCPN-Y-T6-PLASTICA	Y-PLASTIC FITTING-T6
57	2-02588	VTCEI M4X35	HEX. SOCKET HEAD SCREW M4X35
58	319921	RONDELLA D.20X30X0,3	WASHER D.20X30X0,3
59	3-01865	VALVOLA	VALVE
60	3-00461	RACCPN-D-G1/8G-T6	D-FITTING-G1/8G-T6
61	4-104740	REGOLATORE DI FLUSSO G1/8	FLOW REGULATOR G1/8
62	2-02637	VTSPFI M4X25	SCREW M4X25
63	2-00211	RONDELLA D.6	WASHER D.6
64	4-104737	LAMIERA FISS.VALVOLE	PLATE
65	2-00380	VTE M10X25	HEXAGON HEAD SCREW M10X25
66	312873	RONDELLA D.10X30X4	WASHER D.10X30X4
67	361339	BARRA VERTICALE	BAR
68	4-104741	LAMIERA MICRO	PLATE
69	460854	TAPPO QUADRO 50X14	CAP 50X14
70	3-00075	VITE FORATA DOPPIA G1/8	SCREW TWO HOLES G1/8
71	3-00451	RONDELLA ALLUMINIO 1/8	ALUMINIUM WASHER 1/8
72	3-00515	RACCPN-ANELLO-G1/8-T6	FITTING-G1/8-T6
73	3-00514	RACCPN-ANELLO-G1/8-T4	FITTING-G1/8-T4
74	2-00156	DADO ES. M8	HEXAGON NUT M8
75	4-116978	TIRANTE D.7X313 M8	TIE ROD D.7X313 M8
76	2-01137	DADO ES.A. M8	AUTOLOCKING HEXAGON NUT M8
77	4-105510	LAMIERA PROT. CILINDRO	PLATE
78	2-00212	RONDELLA D.8	WASHER D.8

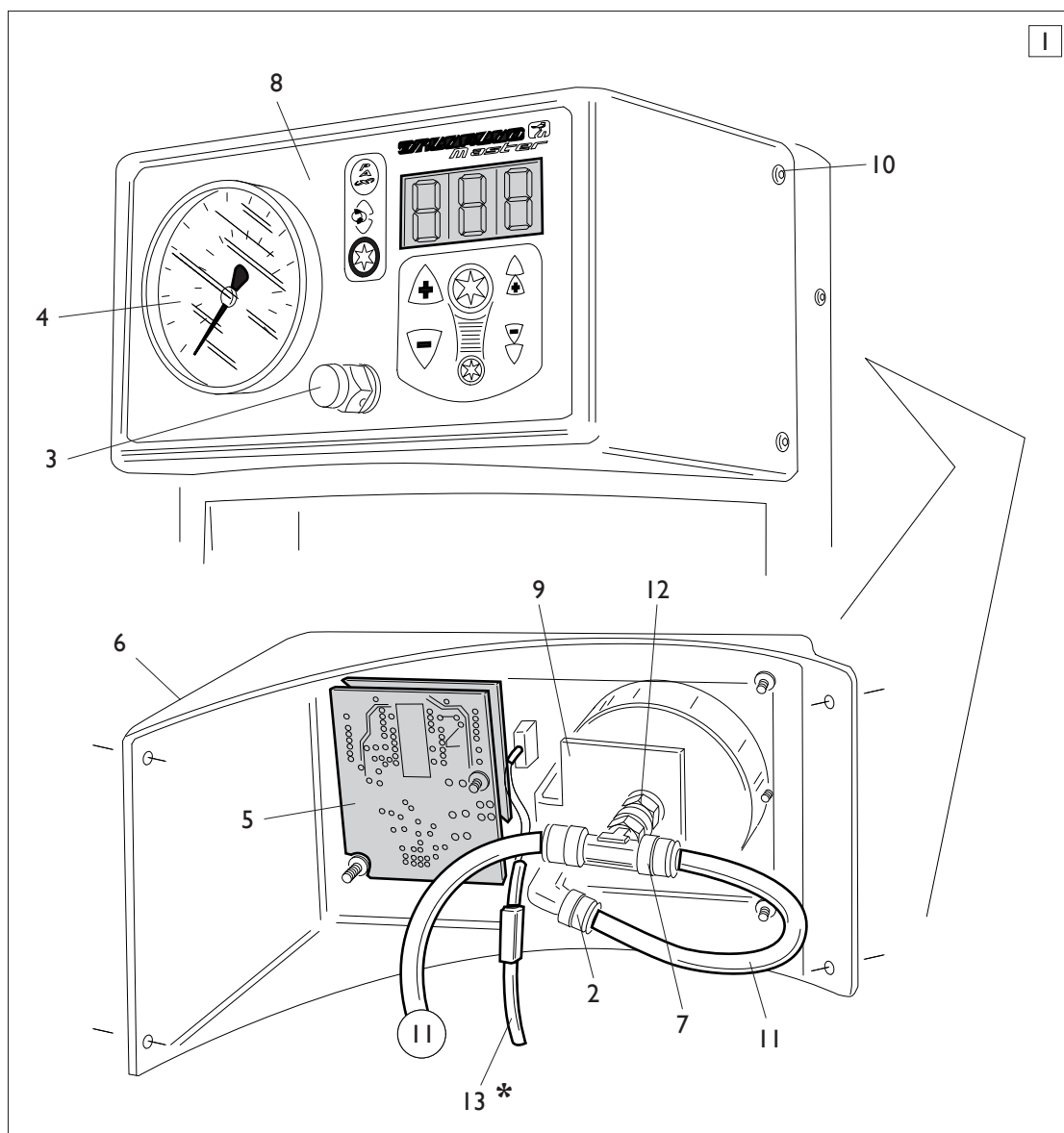
GRUPPO ROTAZIONE STALLONATORE BEAD BREAKER ROTATION GROUP



[TORNA AL COMPLESSIVO](#)
[RETURNS TO OVERALL](#)

Rif. Ref.	Codice Code	Descrizione	Description
1	2-00023	SEEGER D.10	SEEGER D.10
2	2-00214	RONDELLA D.12	WASHER D.12
3	2-03061	ROTELLA	ROLLER
4	361308	ECCENTRICO	ECCENTRIC
5	354588	RONDELLA D.10,5X18X1,5	WASHER D.10,5X18X1,5
6	2-01276	DADO ES.B.A. M12	LOW AUTOLOCKING HEXAGON NUT M12
7	262387	ECCENTRICO COMPLETO	ECCENTRIC ASSEMBLY
8	4-100337	BRACCIO ROTAZIONE	ROTATION ARM
9	2-71525	DADO ES.B.A. M10	LOW AUTOLOCKING HEXAGON NUT M10
10	2-02494	RONDELLA D.10	WASHER D.10
11	2-03157	VTE M10X70	HEXAGON SOCKET HEAD SCREW M10X70

GRUPPO MANOMETRO PRESSURE GAUGE GROUP



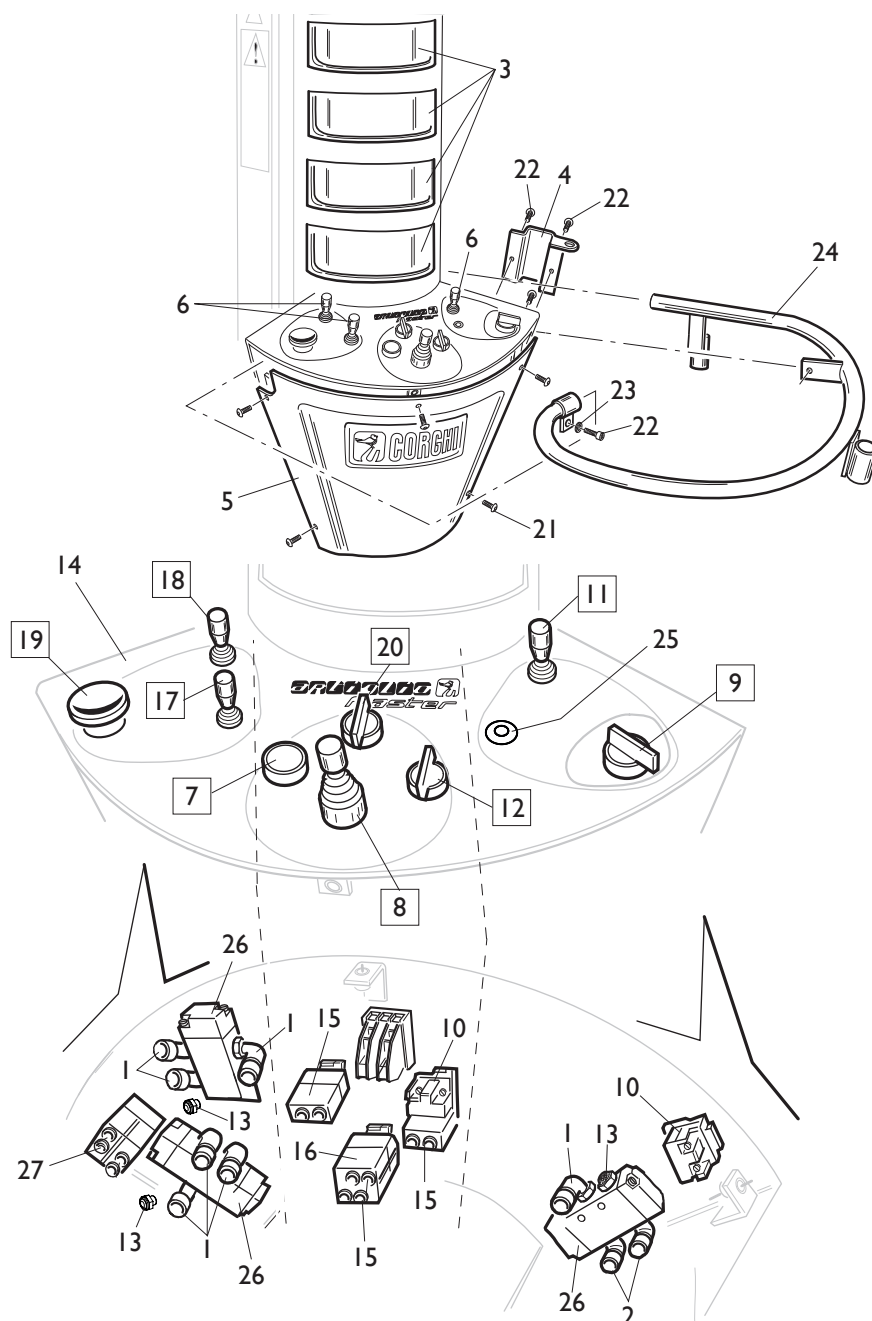
*** NON INCLUSO
NO INCLUDED**

[TORNA AL COMPLESSIVO
RETURNS TO OVERALL](#)

Rif. Ref.	Codice Code	Descrizione	Description
1	5-100642	GRUPPO MANOMETRO BAR/PSI	PRESSURE GAUGE BAR/PSI PRESSURE
1	5-105053	GRUPPO MANOMETRO BAR	PRESSURE GAUGE BAR ASSEMBLY
2	3-00055	RACCPN-LO-G1/4G-T8	FITTING 1/4
3	235463	VALVOLA DI SGONFIAGGIO	DEFLATION VALVE
4	3-00486	MANOMETRO BAR	PRESSURE GAUGE BAR
4	3-00490	MANOMETRO BAR/PSI	PREUSSRE GAUGE BAR/PSI
4	3-00493	MANOMETRO KPA	PREUSSRE GAUGE KPA
5	4-101923	SK P2K	BOARD P2K
6	4-101139	CARTER	COVER
7	3-00287	RACCPN-TO-G1/4CG-T8	TO-FITTING-G1/4CG-T8
8	4-100148	PANNELLO DISPLAY	DISPLAY PANEL
9	361797	LAMIERA SUPPORTO MANOMETRO	PRESSURE GAUGE COVER
10	2-02145	VTBEI M4X10	ROUNDED HEAD SCREW SOCKET M4X10
11	362900	TUBO 8X1 L.260mm	PIPE 8X1 L.260mm
12	3-00101	RACCPN-MANICOTTO-G1/4-G1/4	RACCPN-G1/4-G1/4
* 13	5-100648	CAVO CONSOLLE	CONSOLE CABLE

*** NON INCLUSO**
NO INCLUDED

GRUPPO CONSOLLE COMANDI COMMAND CONSOLE GROUP

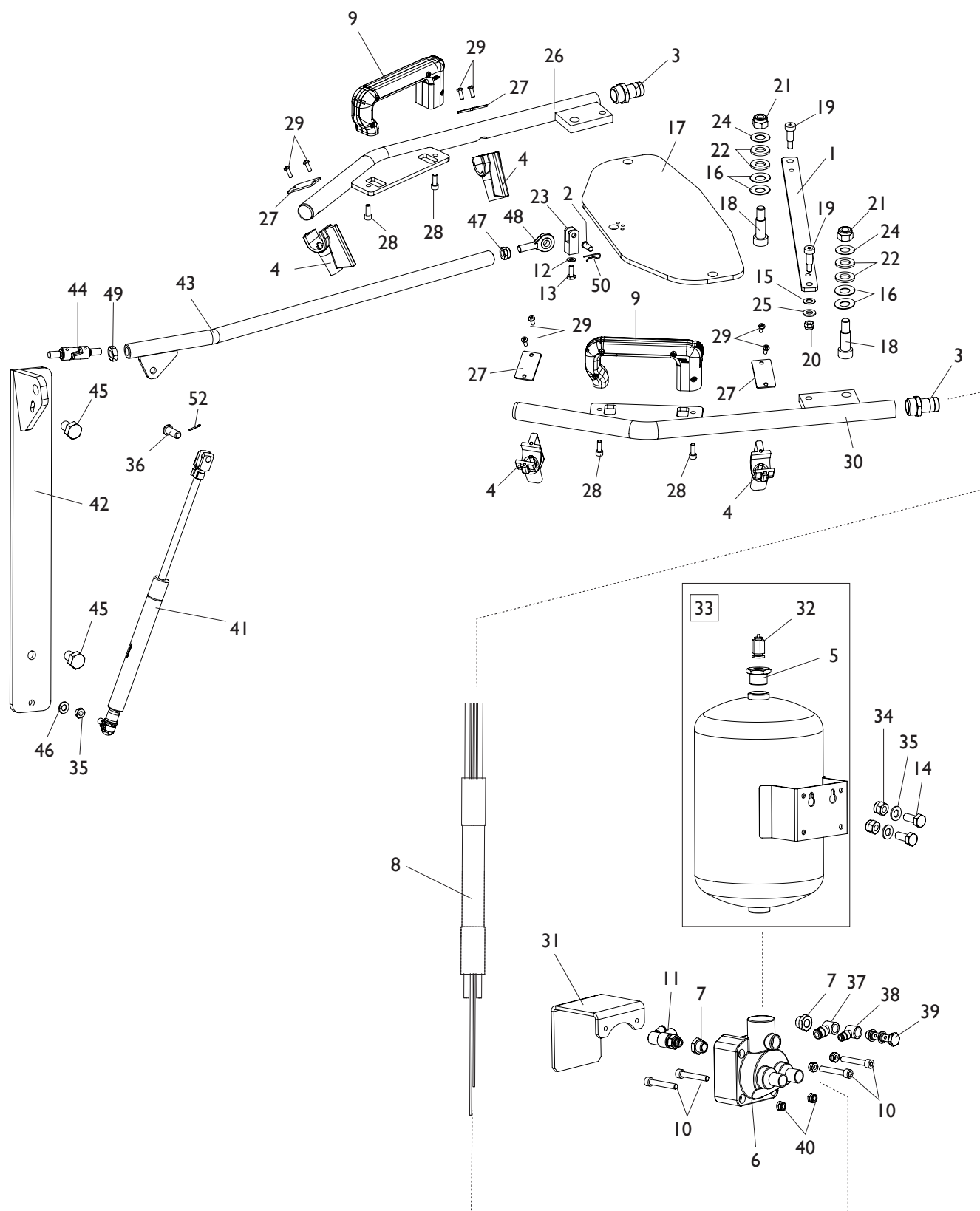


[TORNA AL COMPLESSIVO](#)
[RETURNS TO OVERALL](#)

Rif. Ref.	Codice Code	Descrizione	Description
1	3-00049	RACCPN-LO-G1/8G-T8	LO-FITTING-G1/8G-T8
2	3-00053	RACCPN-LO-G1/8-T6	LO-FITTING-G1/8-T6
3	461850	VASCHETTA	HOLDER
4	361271	SUPPORTO ATTREZZI	SUPPORT
5	461849	COFANO	COVER
6	440585	IMPUGNATURA	HANDLE
7	261836	COMANDO RICERCA UTENSILE	TOOL COMMAND
8	261838	MANIPOLATORE TESTINA	HEAD COMMAND
9	261839	COMANDO PAX	PAX COMMAND
10	461843	CONTATTO	CONTACT
11	261833	COMANDO SOLLEVATORE	LIFTER COMMAND
12	261835	COM. SMONT./ARRETRAMENTO	DEMOUNTING COMMAND
13	3-00181	SILENZIATORE IN ACCIAIO 1/8	SILENCER 1/8
14	461848	ADESIVO PANNELLO	PANEL LABEL
15	461841	VALVOLA NC	VALVE NC
16	461844	VALVOLA NO	VALVE NO
17	5-100089	COMANDO STALLONATORE INF.	LOWER BEAD COMMAND
18	5-100085	COMANDO STALLONATORE SUP.	UPPER BEAD COMMAND
19	5-100087	COMANDO PENETRAZIONE	INSERTION COMMAND
20	5-102719	COMANDO ROTAZIONE TESTINA	ROTATION TOOL COMMNAD
21	2-02177	VTBEI M4X12	SCREW M4X12
22	2-00309	VTCEI M6X16	HEXAGON SOCKET HEAD SCREW M6X16
23	2-00211	RONDELLA D.6	WASHER D.6
24	4-102637	TUBO PROTEZIONE CONSOLLE	CONSOLLE PROTECTION
25	4-101337	TAPPO TONDO D.15,9X8,7	CAP D.15,9X8,7
26	3-00371	VALVOLA	VALVE
27	3-01207	VALVOLA	VALVE

GRUPPO T.I. SYSTEM

T.I. SYSTEM GROUP

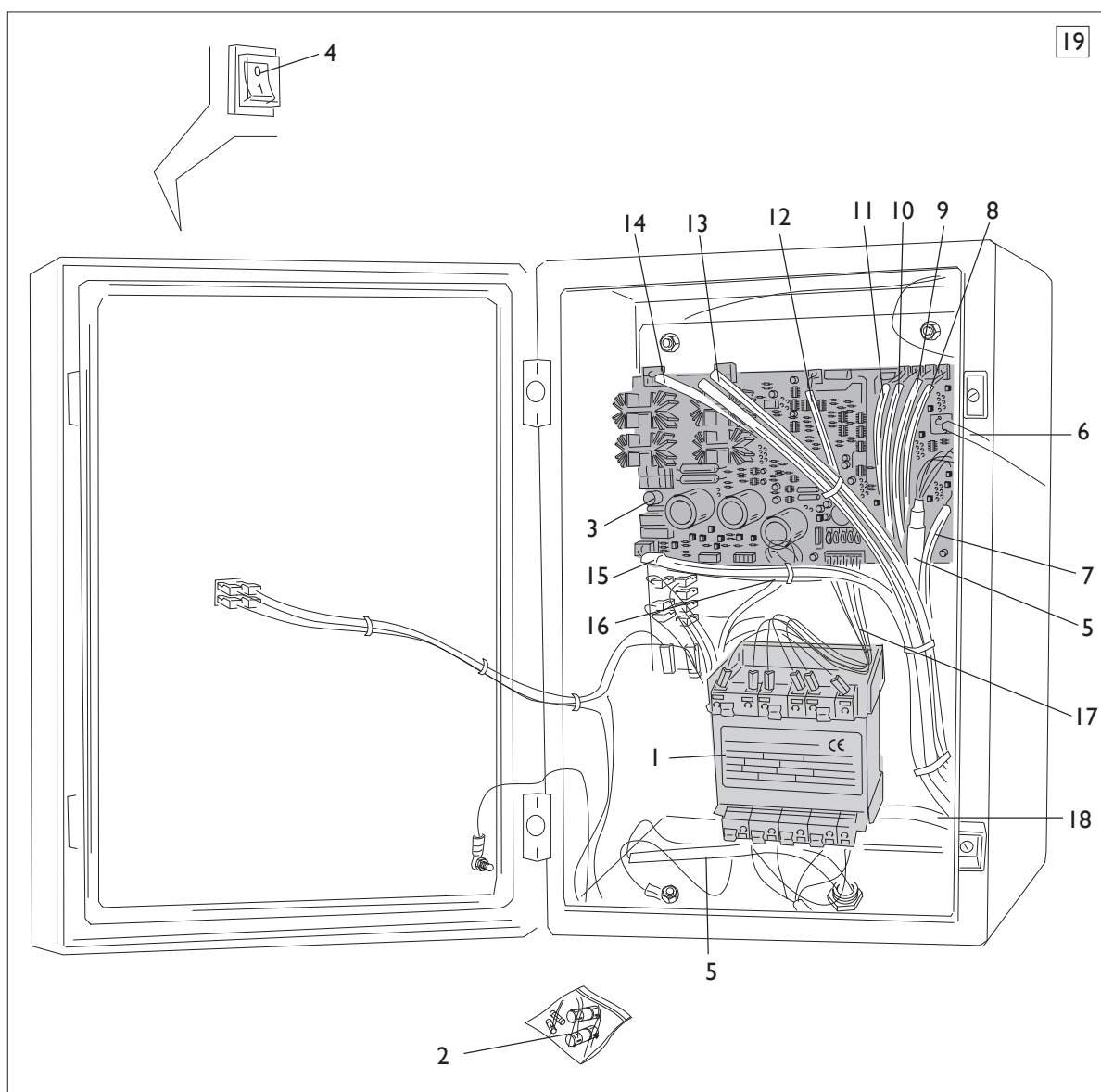


[TORNA AL COMPLESSIVO](#)
[RETURNS TO OVERALL](#)

Ref.	Code	Descrizione	Description
1	362122	TIRANTE	TIE ROD
2	478247	PERNO FORCELLA	FORK PIN
3	3-00008	RACCORDO-RESCA G1/2-T17	RESCA FITTING G1/2 T17
4	462124	UGELLO	NOZZLE
5	442239	RIDUZIONE M/F 3/8	FITTING M/F 3/8
6	243203	VALVOLA DI SPARO	VALVE FIRING
7	3-00269	RACCPN-RIDUZIONE-G1/4-1/8F	FITTING-G1/4-1/8F
8	5-103624	TRECCIA TUBI PNEUMATICI	BRAIDED PNEUMATIC TUBES
9	5-101632	MANIGLIA	HANDLE
10	2-94006	VTCEI 1/2 M6X40	CIRCULAR SOCKET HEAD SCREW M6X40
11	3-01175	VALVOLA	VALVE
12	2-00213	RONDELLA D.10	WASHER D.10
13	2-02184	VTE M10X25	HEXAGON HEAD SCREW M10X25
14	2-02047	VTE M8X20	HEXAGON SOCKET HEAD SCREW M8X20
15	2-02247	RONDELLA ELASTICA D.8,4X15	ELASTIC WASHER D.8,4X15
16	2-03088	MOLLA A TAZZA	WASHER
17	362121	PIASTRA CENTRALE	CENTRAL PLATE
18	2-03090	VSTCCE M10	CIRCULAR SOCKET HEAD SCREW M10
19	2-03091	VSTCCE M6	CIRCULAR SOCKET HEAD SCREW M6
20	2-01257	DADO ES.N.A. M6	NORMAL AUTOLOCKING HEXAGON NUT M6
21	2-01019	DADO ES.N.A. M10	NORMAL AUTOLOCKING HEXAGON NUT M10
22	2-00214	RONDELLA D.12	WASHER D.12
23	362194	FORCELLA ATTACCO PIASTRA	FORK
24	462117	RONDELLA D.12X24X0,5	WASHER D.12X24X0,5
25	2-00211	RONDELLA D.6	WASHER D.6
26	262127	BRACCIO DX	ARM DX
27	362123	PIASTRA FISSAGGIO UGELLO	NOZZLE PLATE
28	2-02037	VTCEI M5X14	CIRCULAR SOCKET HEAD SCREW M5X14
29	2-03121	VATCCIC D4X12	SCREW TAPPING HEAD CUTTING CIRC. CROSS M4X12
30	262128	BRACCIO SX	ARM SX
31	3020962	STAFFA PROTEZIONE VALVOLA	VALVE BRACKET
32	3-00356	VALVOLA CE	VALVE CE
32	3-00278	VALVOLA ASME	VALVE ASME
33	262215	SERBATOIO CE	TANK CE
33	5-100552	SERBATOIO ASME	TANK ASME
34	2-01020	DADO ES.N.A. M8	NORMAL AUTOLOCKING HEXAGON NUT M8
35	2-00212	RONDELLA D.8	WASHER D.8
36	2-03065	PERNO D.8X22X18,5	PIN D.8X22X18,5
37	3-00515	RACCPN-ANELLO-G1/8-T6	FITTING-G1/8-T6
38	3-00514	RACCPN-ANELLO-G1/8-T4	FITTING-G1/8-T4
39	3-00075	VITE FORATA DOPPIA G1/8	SCREW TWO HOLES G1/8
40	2-01979	DADO ES.A. M6	AUTOLOCKING HEX. NUT M6
41	462140	MOLLA GAS	GAS SPRING
42	4-101815	ATTACCO T.I.	T.I. PLATE
43	262134	ASTA	BAR
44	4-101825	SNODO ASTA	JOINT
45	2-91715	VTE M8X12	HEXAGON SOCKET HEAD SCREW M8X12
46	2-91680	DADO ES.B. M8	LOW HEXAGON NUT M8
47	2-01276	DADO ES.B.A. M12	LOW AUTOLOCKING HEXAGON NUT M12
48	2-03089	TERMINALE FILETTATO	THREADED TERMINAL
49	2-91640	DADO ES.B. M12	LOW HEXAGON NUT M12
50	435055	COPIGLIA D.2X40	PIN D.2X40

GRUPPO IMPIANTO ELETTRICO

ELECTRIC PANEL GROUP



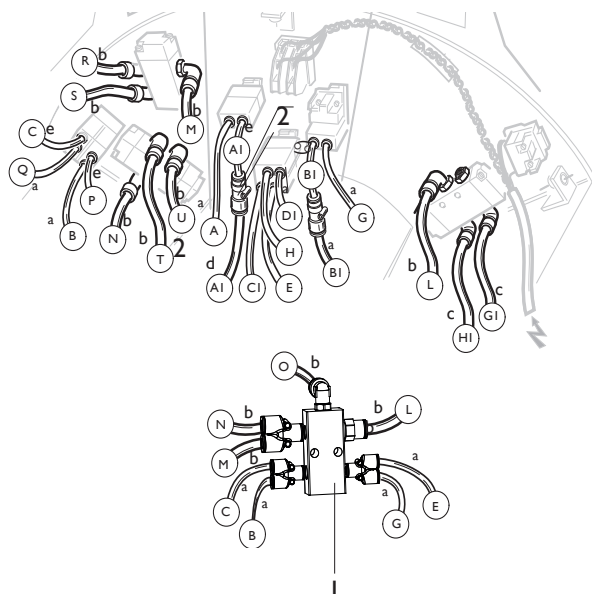
[TORNA AL COMPLESSIVO](#)
[RETURNS TO OVERALL](#)

Rif. Ref.	Codice Code	Descrizione	Description
1	461829	TRASFORMATORE	TRANSFORMER
2	263565	KIT FUSIBILI	FUSES KIT
3	4-101919	SK P2K	PC BOARD P2K
4	433848	INTERRUTTORE	SWITCH
4	5-100654	CAVO RETE	POWER CABLE
5	5-100665	CAVO COLL. SK - CONSOLLE	PC BOARD CABLE - CONSOLE
6	5-100664	CAVO COLL.SK - ENCODER ATTUATORE	PC BOARD CABLE - ACTUATOR ENCODER
7	5-100671	CAVO COLL. SK - DISPLAY	PC BOARD CABLE - DISPLAY
8	5-100666	CAVO COLL. SK - MICRO SOLLEVATORE	PC BOARD CABLE - MICRO LIFTER
9	5-100668	CAVO COLL.SK - ASSE Y DOWN	PC BOARD CABLE - Y AXIS DOWN
10	5-100667	CAVO COLL.SK - ASSE Y UP	PC BOARD CABLE - Y AXIS UP
11	5-100669	CAVO COLL. SK - MICRO AZZERAMENTO	PC BOARD CABLE - MICRO RESET
12	5-100722	CAVO ROTAZIONE AUTOCENTRANTE	CABLE TURNTABLE ROTATION
13	5-100663	CAVO COLL.SK - MOTORE ASSE Y	PC BOARD CABLE - ASSE Y MOTOR
14	5-100662	CAVO COLL.SK - ATTUATORE ASSE X	PC BOARD CABLE - X AXIS ACTUATOR
15	5-100689	CAVO COLL. SK - BRAKEY	PC BOARD CABLE - BRAKEY
16	5-100660	CAVO COLL.SK - EV1/EV2	PC BOARD CABLE - EV1/EV2
17	5-101471	CAVO SECONDARIO TRASFORMATORE	TRANSFORMER CABLE
18	5-105010	CAVO ALIM.MOTOINV - SK	MOTOINVERTER POWER CABLE - PC BOARD
19	5-100726	IMPIANTO ELETTRICO COMPLETO	ELECTRIC PANEL ASSEMBLY

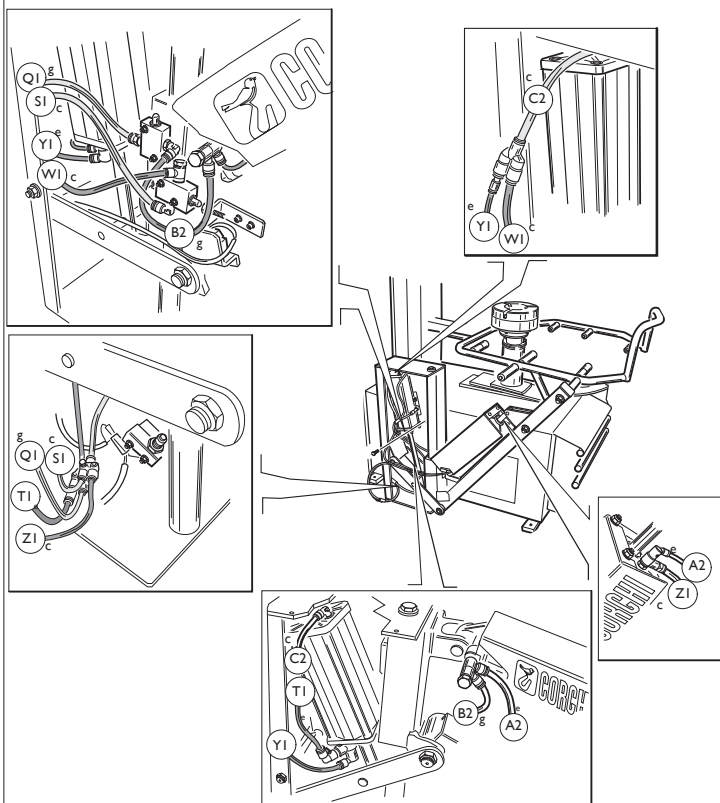
IMPIANTO PNEUMATICO

PNEUMATIC SYSTEM

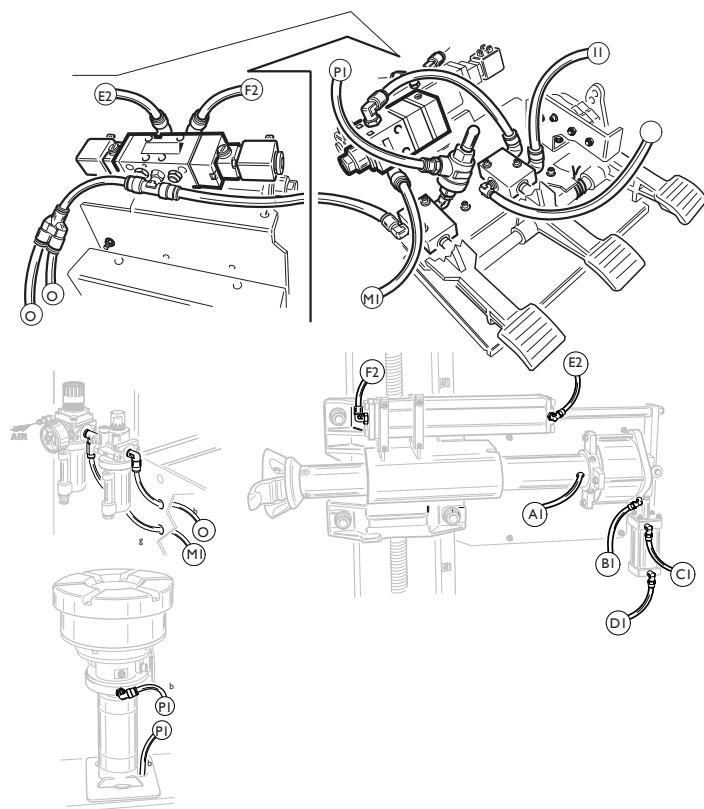
CONSOLLE COMANDI COMAND CONSOLE



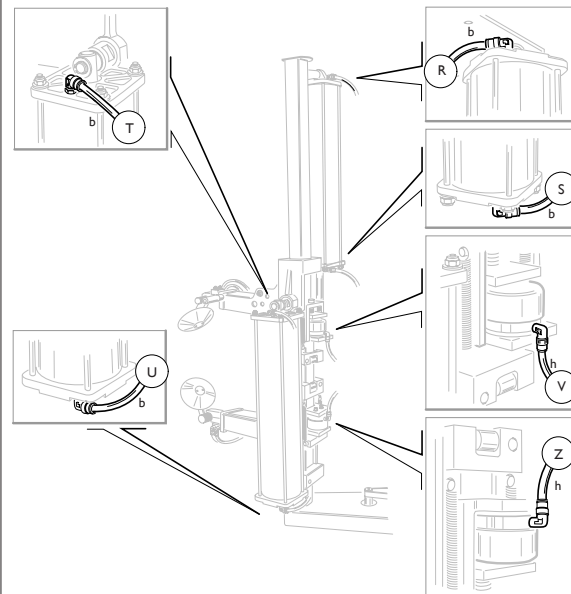
SOLLEVATORE LIFTER



PEDALIERA PEDAL



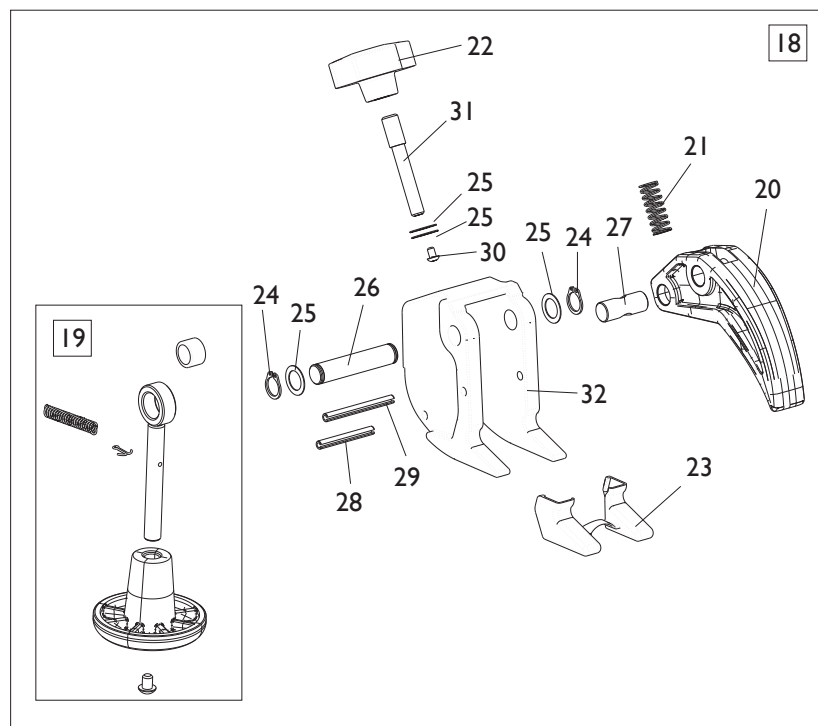
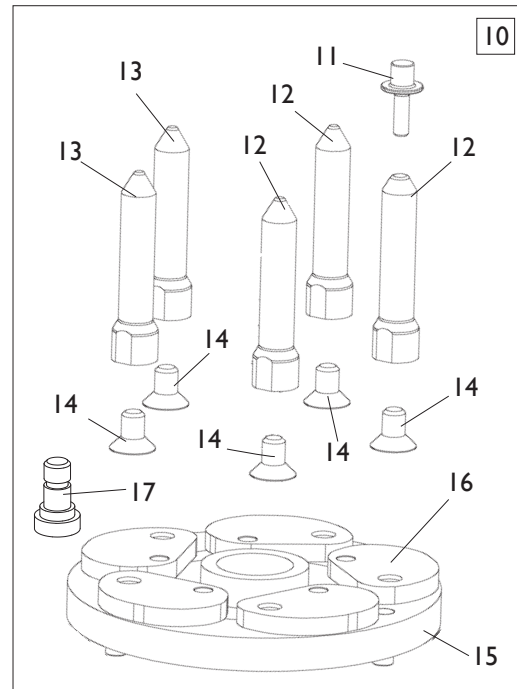
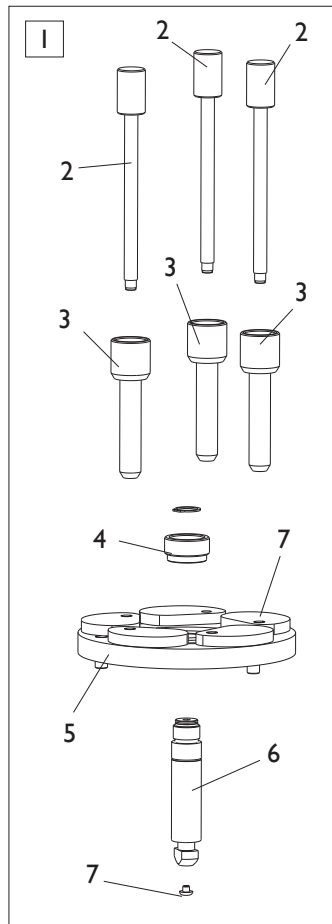
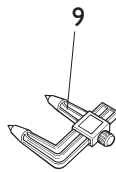
STALLONATORE BEAD BREAKER



**TORNA AL COMPLESSIVO
RETURNS TO OVERALL**

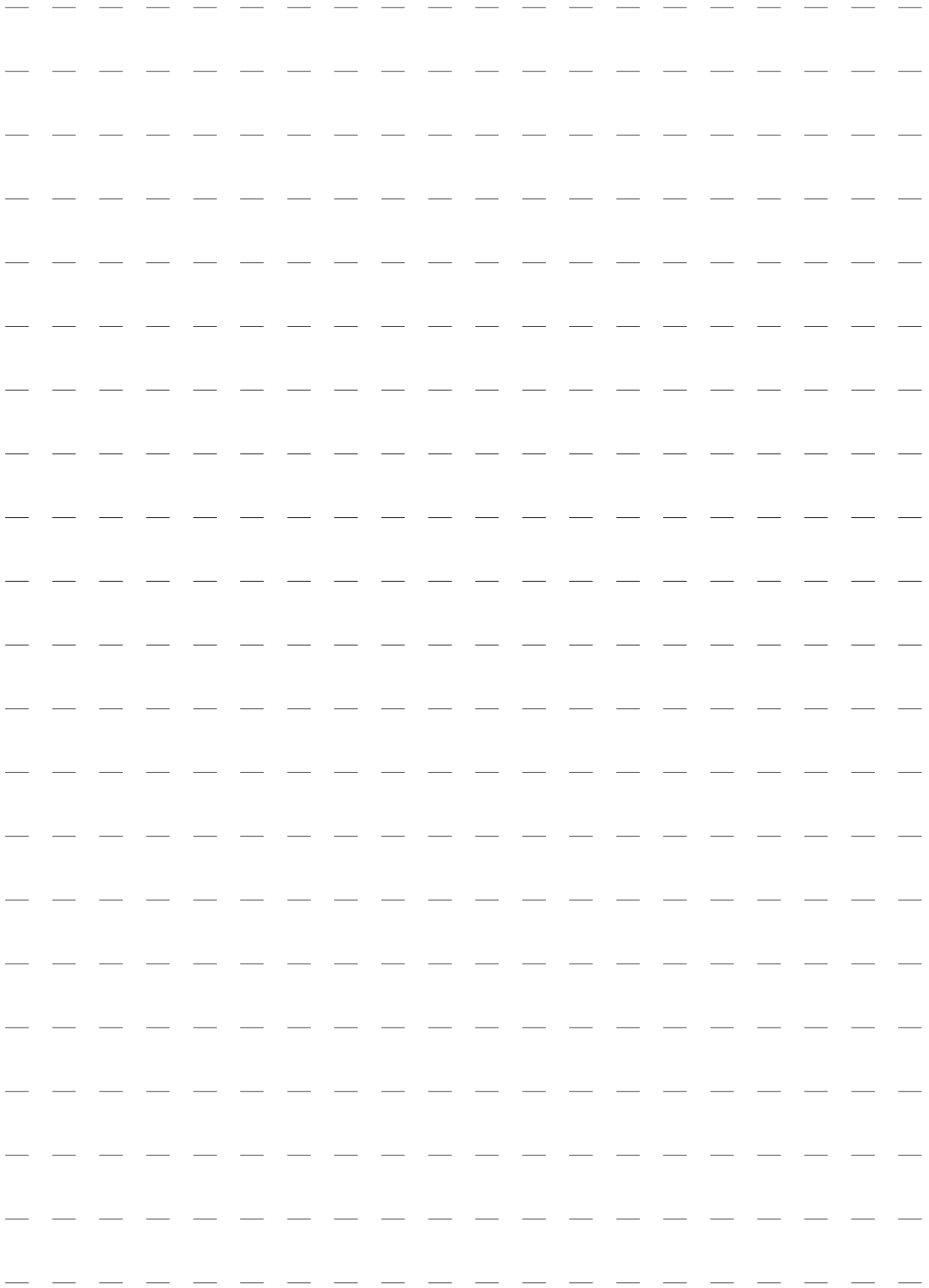
Rif. Ref.	Codice Code	Descrizione	Description
A	I-04567	TUBO AZZURRO D.4X1	BLUE PIPE D.4X1
B	I-04333	TUBO NERO D.8X1	BLACK PIPE D.8X1
C	I-04036	TUBO GIALLO D.6X1	YELLOW PIPE D.6X1
D	I-04283	TUBO NERO D.6X1	BLACK PIPE D.6X1
E	I-04035	TUBO NERO D.4X1	BLACK PIPE D.4X1
F	I-04002	TUBO TRASPARENTE D.6X1	TRASPARENT PIPE D.6X1
G	I-04001	TUBO ROSSO D.6X1	RED PIPE D.6X1
H	I-04551	TUBO VERDE D.4X1	GREEN PIPE D.4X1
I	I-04003	TUBO BLU D.6X1	BLUE PIPE D.6X1
1	5-106241	DISTRIBUTORE	VALVE
2	3-01174	RACCPN-D-T4-T6	D-FITTING-T4-T6

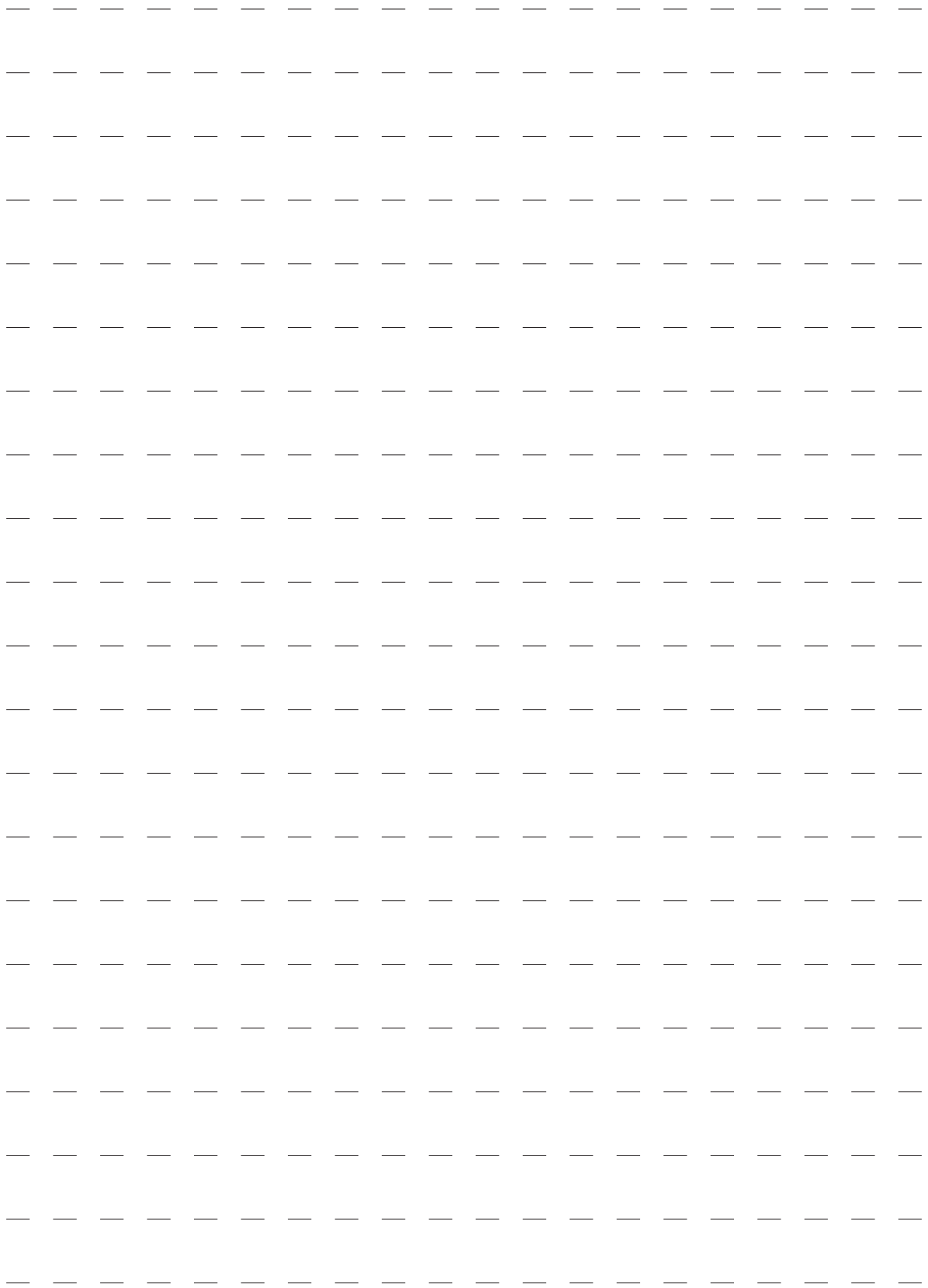
ACCESSORI ACCESSORIES



[TORNA AL COMPLESSIVO](#)
[RETURNS TO OVERALL](#)

Rif. Ref.	Codice Code	Descrizione	Description
1	8-11100038	KIT RUOTE CIECHE	WHEEL KIT BLIND
2	361647	VITE FISSAGGIO CERCHI CIECHI	FIXING BOLT RIMS BLIND
3	361648	GHIERA FISSAGGIO CERCHI CIECHI	FITTING NUT RIMS BLIND
4	4-103766	GHIERA SERRAGGIO FLANGIA	FITTING NUT
5	5-102422	FLANGIA UNIVERSALE 6 PETALI	UNIVERSAL FLANGE 6 PETALS
6	4-102372	BARRA BLOCC. FLANGE	BAR
7	461560	PROTEZIONE	PROTECTION
8	4-107023	BIELLA	PETAL
9	2008157	RILEVATORE FORI	DETECTOR HOLES
10	8-11100039	KIT RUOTE ROVESCE	REVERSE RIMS KIT
11	4-102377	GHIERA DI SERRAGGIO	FITTING NUT
12	5-102721	COLONNETTA CON SERRAGGIO	COLUMN WITH LOCKING
13	5-102720	COLONNETTA	COLUMN
14	2-71769	VTSPEI M12X20	CSK SCREW FLAT SOCKET M12X20
15	5-102421	FLANGIA CERCHI ROVESCII	FLANGE REVERSE RIMS
16	4-107024	BIELLA	PETAL
17	4-101250	VITE FISSAGGIO BIELLA	SPECIAL SCREW
18	8-11100120	MORSETTO BASCULANTE	TILTING CLAMP
19	5-101642	DISCO DI SPINTA	DISK
20	4-104051	DITO	TOOL
21	3-01760	MOLLA D.11,5X30X1,5	SPRING D.11,5X30X1,5
22	3-01715	VOLANTINO	HANDLE
23	8-11100126	KIT 6 PROTEZIONI	6 PROTECTION KIT
24	2-00025	ANELLO D.12	SEEGER D.12
25	315274	RONDELLA D.12X18X0,5	WASHER D.12X18X0,5
26	4-104271	PERNO	PIN
27	4-104258	PERNO FORATO PICCOLO	SMALL PIN HOLES
28	2-71566	SPINA D.5X40	PLUG D.5X40
29	2-02219	SPINA D.5X50	PLUG D.5X50
30	2-03039	VTBEI M4X6	ROUNDED HEAD SCREW SOCKET M4X6
31	4-104259	PERNO DUE FILETTI	PIN TWO THREADS
32	4-104235	CORPO MORSETTO	BODY





Code 4-I04538K



Il disegno è realizzato con tutti i particolari ma solo quelli codificati sono forniti come ricambi. L'Azienda si riserva la facoltà di apportare modifiche senza preavviso.

Production date : 02 / 2018

The drawing shows all parts but only the coded parts are supplied as spares. The Company reserves the right to make modifications without prior notice.