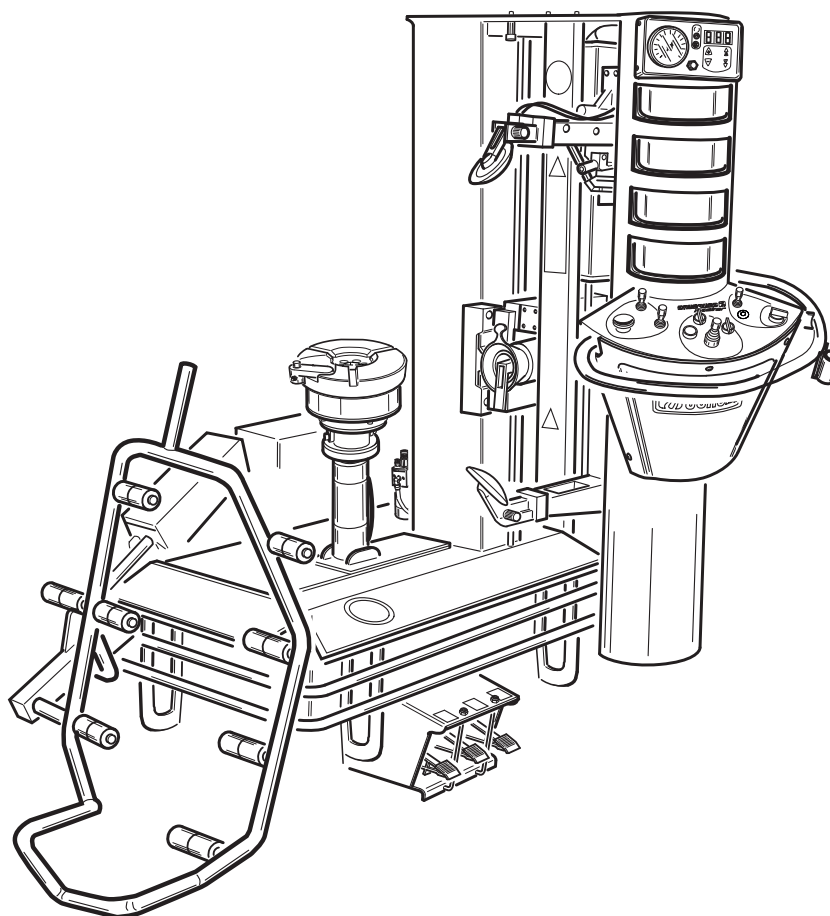


# ARTIGLIO MASTER

Pezzi di ricambio / Spare parts list



Code: 4-104538K

Production date: 01 / 2017



## I

**Sul presente documento sono stati evidenziati con colore grigio i ricambi consigliati e indicati in grassetto i codici che sono variati rispetto a quelli riportati nella precedente versione del 03/16**

## EN

**In this document, the recommended spare parts have been highlighted in gray, while in bold you find those codes which are different if compared with the previous version dated 03/16**

## DE

**Im vorliegenden Dokument wurden die empfohlenen Ersatzteile in grauer Farbe hervorgehoben; die Teilenummern in Fettdruck haben sich beziehend auf die vorherige Version vom 03/16 geändert.**

## FR

**Dans ce document, les pièces de rechange préconisées sont soulignées en gris, tandis que les références différentes par rapport à la version précédente du 03/16 sont en gras**

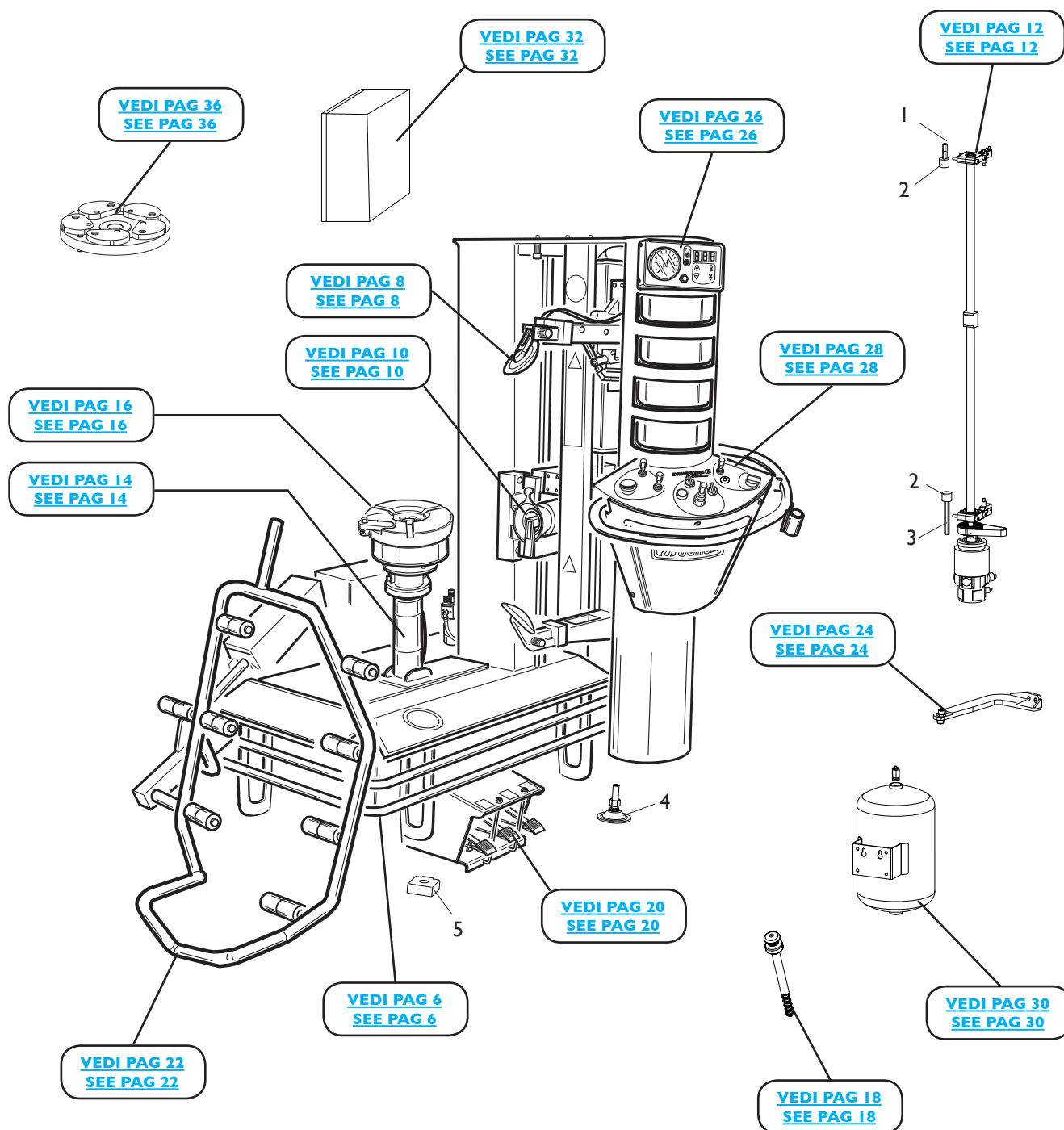
# SOMMARIO

# CONTENTS

|                                   |    |
|-----------------------------------|----|
| COMPLESSIVO ARTIGLIO MASTER       |    |
| ARTIGLIO MASTER OVERALL.....      | 4  |
| GRUPPO COVER                      |    |
| COVER GROUP.....                  | 6  |
| GRUPPO STALLONATORE               |    |
| BEAD BREAKER GROUP .....          | 8  |
| GRUPPO TESTINA                    |    |
| HEAD GROUP.....                   | 10 |
| GRUPPO TRASLAZIONE VERTICALE      |    |
| VERTICAL TRANSLATION GROUP.....   | 12 |
| GRUPPO TRASLAZIONE RUOTA          |    |
| WHEEL TRANSLATION GROUP .....     | 14 |
| GRUPPO AUTOCENTRANTE              |    |
| TURNTABLE GROUP .....             | 16 |
| MANIGLIA BLOCCAGGIO RUOTA         |    |
| HANDLE LOCKING WHEEL .....        | 18 |
| GRUPPO PEDALIERA                  |    |
| PEDAL GROUP .....                 | 20 |
| GRUPPO SOLLEVATORE                |    |
| LIFTER GROUP .....                | 22 |
| GRUPPO ROTAZIONE STALLONATORE     |    |
| BEAD BREAKER ROTATION GROUP ..... | 24 |
| GRUPPO MANOMETRO                  |    |
| PRESSURE GAUGE GROUP.....         | 26 |
| GRUPPO CONSOLLE COMANDI           |    |
| COMMAND CONSOLLE GROUP.....       | 28 |
| GRUPPO T.I. SYSTEM                |    |
| T.I. SYSTEM GROUP.....            | 30 |
| GRUPPO IMPIANTO ELETTRICO         |    |
| ELECTRIC PANEL GROUP.....         | 32 |
| IMPIANTO PNEUMATICO               |    |
| PNEUMATIC SYSTEM .....            | 34 |
| ACCESSORI                         |    |
| ACCESSORIES .....                 | 36 |

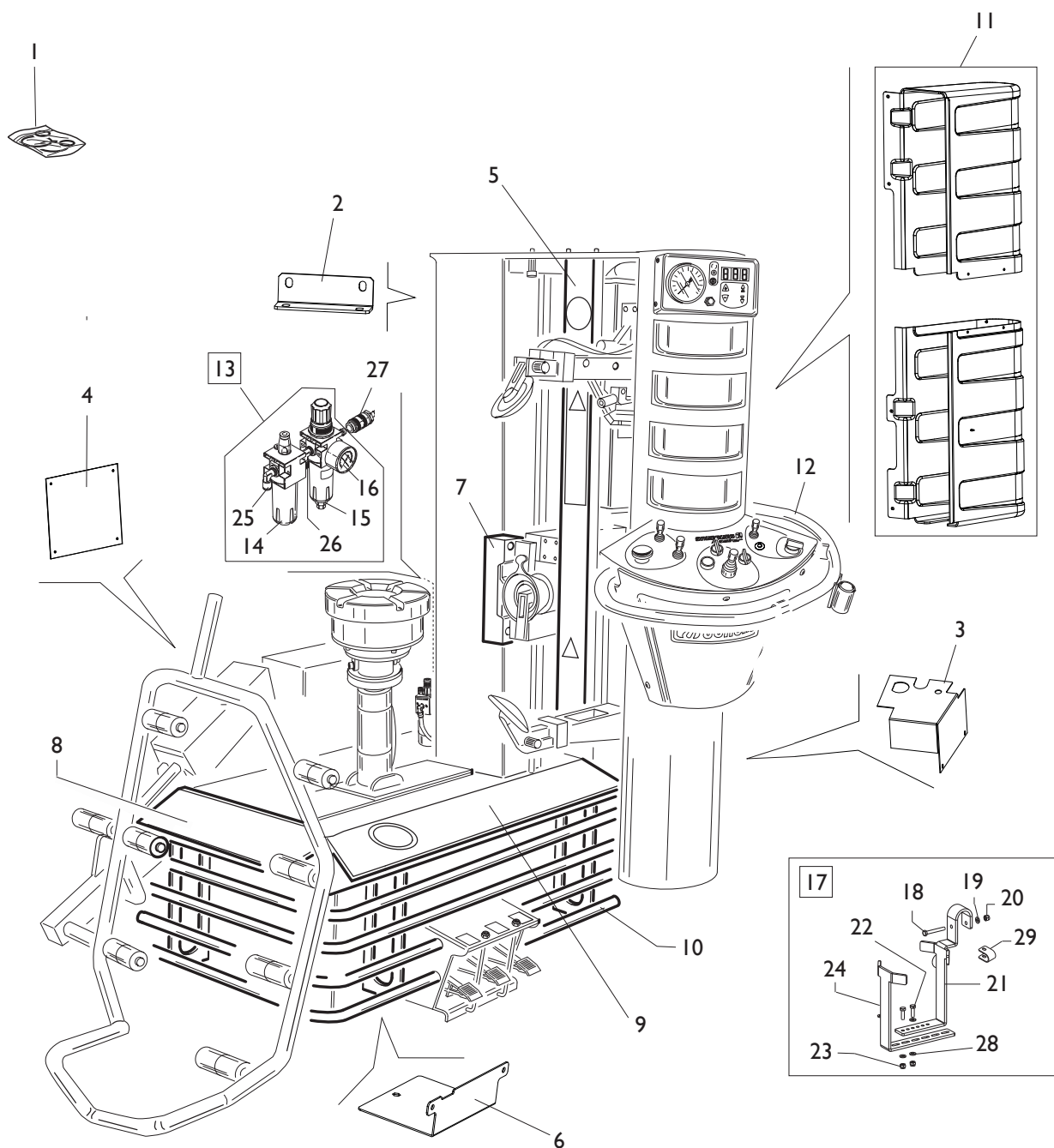
# COMPLESSIVO ARTIGLIO MASTER

## ARTIGLIO MASTER OVERALL



| Rif.<br>Ref. | Codice<br>Code | Descrizione               | Description               |
|--------------|----------------|---------------------------|---------------------------|
| 1            | 361607         | DISTANZIALE M8 H45        | SPACER M8 H45             |
| 2            | 461612         | ANTIVIBRANTE 30X25 M8X20  | ANTIVIBRATION 30X25 M8X20 |
| 3            | 361606         | COLONNETA ESAGONALE LUNGA | LONG COLUMN HEX           |
| 4            | <b>215022</b>  | <b>PIEDE REGOLABILE</b>   | <b>ADJUSTABLE FOOT</b>    |
| 5            | 422019         | PIEDE                     | FOOT                      |

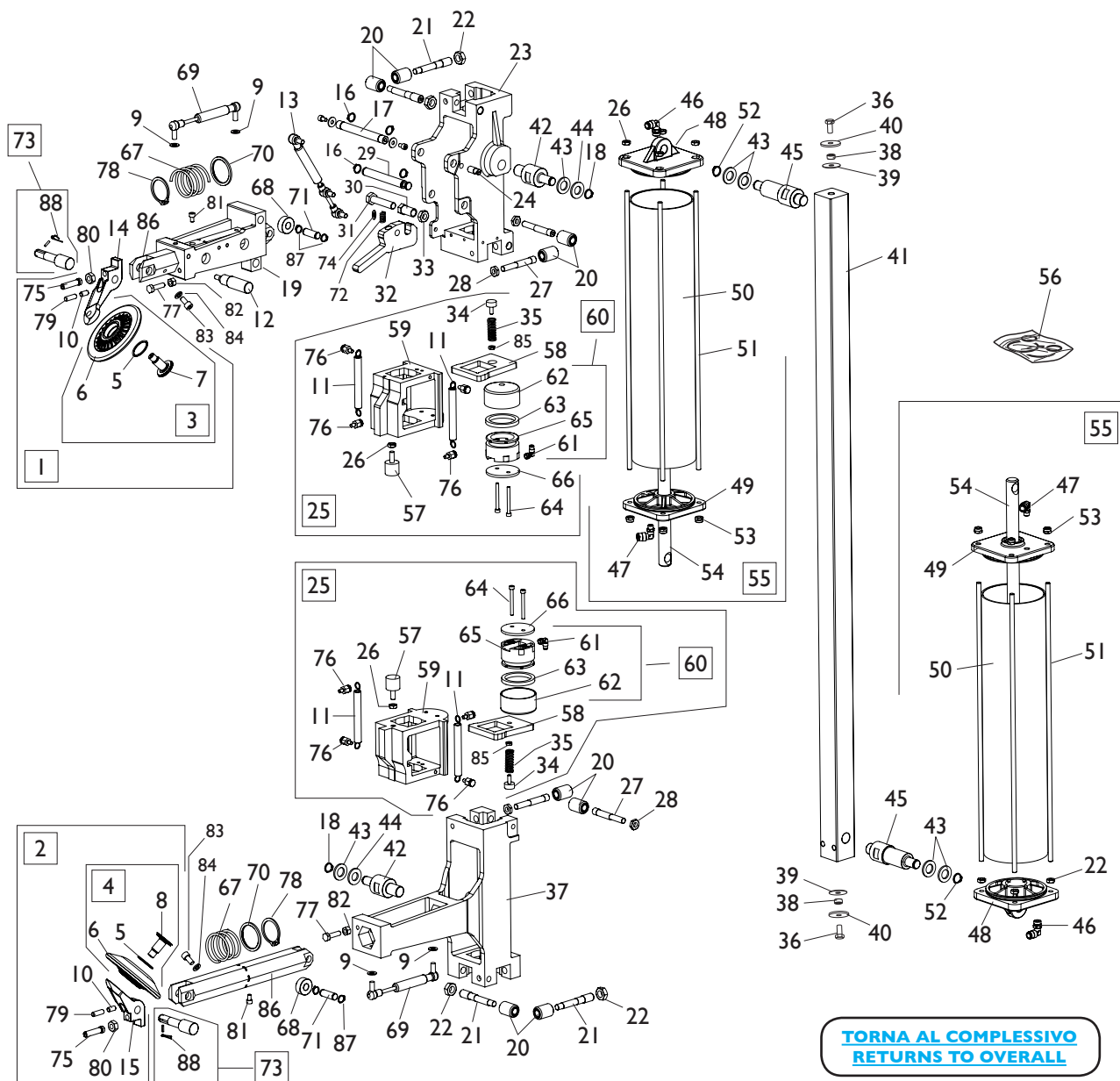
# GRUPPO COVER COVER GROUP



**TORNA AL COMPLESSIVO  
RETURNS TO OVERALL**

| Rif.<br>Ref. | Codice<br>Code | Descrizione                         | Description                          |
|--------------|----------------|-------------------------------------|--------------------------------------|
| 1            | 5-102924       | KIT ADESIVI MASTER                  | MASTER LABELS KIT                    |
| 2            | 4-100181       | SUPPORTO CASSETTA ELETTRICA         | SUPPORT ELECTRICAL BOX               |
| 3            | 361269         | LAMIERA PROTEZIONE PULEGGIA         | SHEET METAL PULLEY GUARD             |
| 4            | 361246         | COPERCHIO LATERALE                  | LATERAL COVER                        |
| <b>5</b>     | <b>263115</b>  | <b>LAMIERA PROTEZIONE LUNGA</b>     | <b>PROTECTION SHEET LONG</b>         |
| 6            | 4-118132       | LAMIERA CHIUSURA PEDALE SOLLEVATORE | SHEET CLOSING PEDAL LIFTER           |
| 7            | 361242         | LAMIERA PROTEZIONE TESTINA          | SHEET METAL HEAD GUARD               |
| 8            | 4-118569       | LAMIERA PROTEZIONE CORTA            | PROTECTION SHEET SHORT               |
| 9            | 4-118570       | LAMIERA PROTEZIONE LUNGA            | PROTECTION SHEET LONG                |
| 10           | 4-104705       | PROTEZIONE INFERIORE 3 TUBI         | PROTECTION                           |
| 11           | 5-101545       | PROTEZIONE POSTERIORE (2 PZ)        | REAR COVER (2 PZ)                    |
| 12           | 4-102637       | TUBO PROTEZIONE CONSOLLE            | CONSOLLE PROTECTION                  |
| 13           | 462929         | FILTRO REGOLATORE                   | FILTER                               |
| 14           | 457511         | BICCHIERE LUBRIFICATORE             | LUBRIFICATOR BOWL                    |
| 15           | 457512         | BICCHIERE FILTRO                    | FILTER BOWL                          |
| 16           | 3-00488        | MANOMETRO D.40                      | PRESSURE GAUGE D.40                  |
| 17           | 5-101236       | SUPPORTO GRASSO <b>1 KG</b>         | GREASER SUPPORT <b>1 KG</b>          |
| 17           | 801261060      | SUPPORTO GRASSO <b>3,5-5 KG</b>     | GREASER SUPPORT <b>3,5-5 KG</b>      |
| 18           | 2-02802        | VTE 1/2F M8X50                      | HEXAGON SOCKET HEAD SCREW 1/2F M8X50 |
| 19           | 2-00212        | RONDELLA D.8                        | WASHER D.8                           |
| 20           | 2-01020        | DADO ES.N.A. M8                     | NORMAL AUTOLOCKING HEXAGON NUT M8    |
| 21           | 4-103831       | GANCIO                              | HOOK                                 |
| 22           | 2-02339        | VTE M6X20                           | HEXAGON SOCKET HEAD SCREW M6X20      |
| 23           | 2-01257        | DADO ES.N.A. M6                     | NORMAL AUTOLOCKING HEXAGON NUT M6    |
| 24           | 4-103832       | LAMIERA FERMO                       | PLATE                                |
| 25           | 3-00221        | RACCPN-L G1/4C T8                   | L-FITTING G1/4C T8                   |
| 26           | 3-00001        | RACCPN-T G1/4 M/M                   | T-FITTING G1/4                       |
| 27           | 3-00257        | RACCORDO RAPIDO                     | FITTING                              |
| 28           | 2-00211        | RONDELLAD.6                         | WASHER D.6                           |
| 29           | 4-102642       | LAMIERA PORTA GRASSO                | BRACKET                              |

# GRUPPO STALLONATORE BEAD BREAKER GROUP

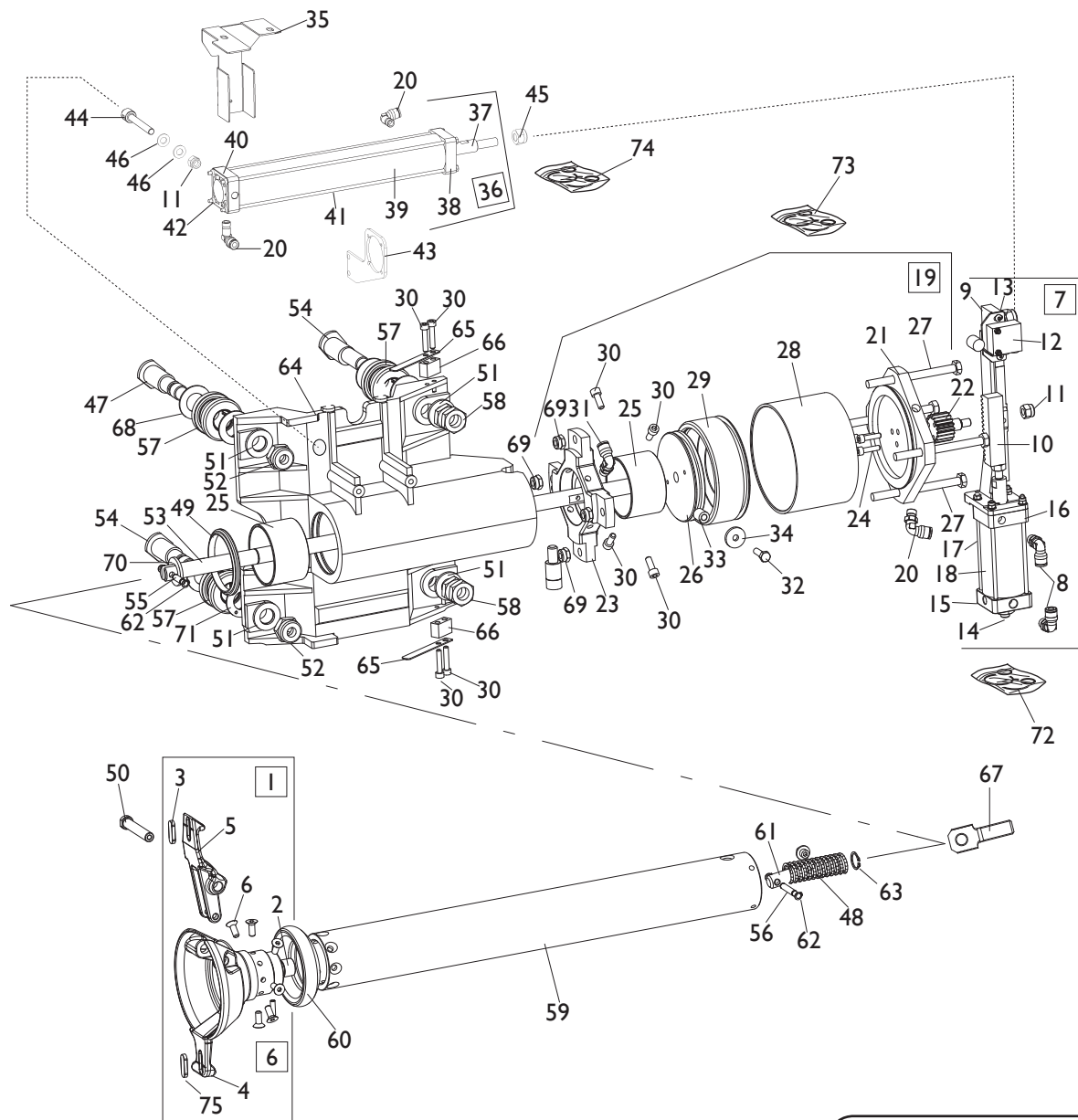


| Ref. | Code     | Descrizione                             | Description                             |
|------|----------|---|---|
| 1    | 5-100077 | DISCO STALL. <b>SUPERIORE</b> CPL.      | <b>UPPER</b> BEAD BREAKER DISC ASSEMBLY |
| 2    | 5-100078 | DISCO STALL. <b>INFERIORE</b> CPL.      | <b>LOWER</b> BEAD BREAKER ASSEMBLY      |
| 3    | 5-100687 | DISCO <b>SUPERIORE</b> CON PERNO        | <b>UPPER</b> DISC WITH PIN              |
| 4    | 5-100686 | DISCO <b>INFERIORE</b> CON PERNO        | <b>LOWER</b> DISC WITH PIN              |
| 5    | 421833   | O-RING D.29,82X2,62                     | O-RING D.29,82X2,62                     |
| 6    | 5-100688 | DISCO CON CUSCINETTI                    | DISC WITH BEARING                       |
| 7    | 4-100721 | PERNO FISS. DISCO <b>SUPERIORE</b> (DX) | <b>UPPER</b> PIN (DX)                   |
| 8    | 4-100720 | PERNO FISS. DISCO <b>INFERIORE</b> (SX) | <b>LOWER</b> PIN (SX)                   |
| 9    | 2-00212  | RONDELLA D.8                            | WASHER D.8                              |
| 10   | 2-71768  | VSTEI M8X16                             | SCREW M8X16                             |
| 11   | 461428   | MOLLA D.15,8X1,5X99,6                   | SPRING D.15,8X1,5X99,6                  |
| 12   | 4-100168 | MANOPOLA GIREVOLE                       | HANDLE                                  |
| 13   | 461434   | AMMORTIZZATORE STABILUS 1345            | STABILUS DAMPER 1345                    |
| 14   | 4-100183 | SUPPORTO DISCO <b>SUPERIORE</b>         | <b>UPPER</b> DISC SUPPORT               |
| 15   | 4-100184 | SUPPORTO DISCO <b>INFERIORE</b>         | <b>LOWER</b> DISC SUPPORT               |
| 16   | 2-00026  | <b>SEEGER D.14</b>                      | <b>SEEGER D.14</b>                      |
| 17   | 361422   | PERNO FULCRO                            | FULCRUM PIN                             |
| 18   | 2-01122  | <b>SEEGER D.15</b>                      | <b>SEEGER D.15</b>                      |
| 19   | 361411   | SUPPORTO BASCULANTE                     | TILTING SUPPORT                         |
| 20   | 361396   | RULLO ECCENTRICO                        | ECCENTRIC ROLLER                        |
| 21   | 363190   | ECCENTRICO M14                          | ECCENTRIC M14                           |



| Ref.      | Code            | Descrizione                        | Description                          |
|-----------|-----------------|------------------------------------|--------------------------------------|
| 22        | 2-71520         | DADO ES.B. M14X1,5                 | LOW HEXAGON NUT M14X1,5              |
| 23        | 361410          | SUPPORTO MOBILE                    | MOBILE SUPPORT                       |
| <b>24</b> | <b>361414</b>   | <b>ARRESTO</b>                     | <b>STOPPING</b>                      |
| 25        | 262261          | MORSETTO CPL.                      | CLAMP ASSEMBLY                       |
| <b>26</b> | <b>2-00156</b>  | <b>DADO ES.B. M8</b>               | <b>LOW HEXAGON NUT M8</b>            |
| 27        | 363191          | ECCENTRICO M10                     | ECCENTRIC M10                        |
| <b>28</b> | <b>2-03127</b>  | <b>DADO ES. M10X1,5</b>            | <b>HEXAGON NUT M10X1,5</b>           |
| 29        | 361423          | PERNO FULCRO                       | FULCRUM PIN                          |
| 30        | 361398          | BOCCOLA                            | BUSHING                              |
| 31        | 2-01160         | VTE 1/2F M12X55                    | HEX. SOCKET HEAD SCREW 1/2F M12X55   |
| 32        | 361385          | GANCIO STALLONATORE                | HOOK                                 |
| 33        | 2-00158         | DADO ES.B. M12                     | LOW HEXAGON NUT M12                  |
| 34        | 461430          | ANTIVIBRANTE 18X8,5 M6X16          | ANTIVIBRATION 18X8,5 M6X16           |
| 35        | 462646          | MOLLA STRANGOLO                    | SPRING                               |
| 36        | 2-01225         | VTE M12X25                         | HEXAGON SOCKET HEAD SCREW M12X25     |
| 37        | 361412          | SUPPORTO FISSO                     | FIXED SUPPORT                        |
| 38        | 361419          | BOCCOLA D.20X6,5                   | BUSHING D.20X6,5                     |
| 39        | 360474          | RONDELLA D.12,5X45X1,5             | WASHER D.12,5X45X1,5                 |
| 40        | 318216          | RONDELLA D.12,5X50X1,5             | WASHER D.12,5X50X1,5                 |
| 41        | 4-100340        | ASTA                               | ROD                                  |
| 42        | 361393          | ATTACCO CILINDRO                   | CYLINDER PORT                        |
| 43        | 2-01045         | RONDELLA D.16                      | RONDELLA D.16                        |
| <b>44</b> | <b>345032</b>   | <b>RONDELLA D.15,25X30X3</b>       | <b>WASHER D.15,25X30X3</b>           |
| 45        | 361392          | ATTACCO CILINDRO                   | CYLINDER PORT                        |
| 46        | 3-00055         | RACCPN-LO-G1/4G-T8                 | FITTING 1/4                          |
| 47        | 3-00059         | RACCPN-LO-G1/8C-T8                 | FITTING 1/8                          |
| <b>48</b> | <b>4-130671</b> | <b>FLANGIA POST.D.110</b>          | <b>REAR FLANGE D.110</b>             |
| <b>49</b> | <b>5-107559</b> | <b>FLANGIA ANT. D.110</b>          | <b>FRONT FLANGE D.110</b>            |
| <b>50</b> | <b>4-130680</b> | <b>CAMICIA D.110X495</b>           | <b>LINER D.110X495</b>               |
| <b>51</b> | <b>4-130682</b> | <b>TIRANTE M8X531,5</b>            | <b>TIE ROD M8X531,5</b>              |
| <b>52</b> | <b>2-01130</b>  | <b>SEEGER D.16</b>                 | <b>SEEGER D.16</b>                   |
| 53        | 2-01137         | DADO ES.B.A. M8                    | NORMAL AUTOLOCKING HEXAGON NUT M8    |
| <b>54</b> | <b>4-130681</b> | <b>STELO D.22X549,5</b>            | <b>STEM D.22X549,5</b>               |
| 55        | 261424          | CILINDRO STALLONATORE              | BEAD BREAKER CYLINDER                |
| 56        | 245067          | KIT GUARNIZIONI CIL.STALLONATORE   | CYLINDER SEALS KIT                   |
| 57        | 462713          | ANTIVIBRANTE 25X22 M8X20           | ANTIVIBRATION 25X22 M8X20            |
| 58        | 361415          | PIASTRA STRANGOLO                  | PLATE                                |
| 59        | 361386          | MORSETTO                           | CLAMP                                |
| 60        | 261436          | PISTONE CPL.                       | PISTON ASSEMBLY                      |
| 61        | 3-00220         | RACCPN-L-G1/8C-T4                  | L-FITTING-G1/8C-T4                   |
| 62        | 326537          | CILINDRO D.60                      | CYLINDER D.60                        |
| 63        | 443078          | GUARNIZIONE D.60X47,6X6,35         | SEAL D.60X47,6X6,35                  |
| 64        | 2-71755         | VTCEI 1/2F M5X50                   | HEXAGON SOCKET HEAD SCREW 1/2F M5X50 |
| 65        | 443077          | PISTONE D.60X38                    | PISTON D.60X38                       |
| <b>66</b> | <b>361399</b>   | <b>RONDELLA D.6,5X60X4</b>         | <b>WASHER D.6,5X60X4</b>             |
| 67        | 463167          | MOLLA BARRA ESAGONALE              | SPRING FOR HEXAGON BAR               |
| 68        | 361389          | ROTELLA                            | WHEEL                                |
| 69        | 463164          | AMMORTIZZATORE STABILUS 4853       | STABILUS DAMPER 4853                 |
| 70        | 361395          | RONDELLA CONT. MOLLA D.43,7X53X3   | SPRING WASHER D.43,7X53X3            |
| 71        | 361390          | PERNO                              | PIN                                  |
| 72        | 461435          | MOLLA MANIGLIA                     | HANDLE SPRING                        |
| 73        | 5-102704        | PERNO CPL.                         | PIN ASSEMBLY                         |
| 74        | 447879          | RONDELLA DI SICUREZZA D.13         | SECURITY WASHER D.13                 |
| 75        | 362310          | REGISTRO                           | REGISTER                             |
| 76        | 361391          | SUPPORTO ATTACCO MOLLA             | SUPPORT                              |
| 77        | 320191          | VITE SPECIALE M8X30                | SPECIAL SCREW M8X30                  |
| 78        | 2-02131         | SEEGER D.42                        | SEEGER D.42                          |
| <b>79</b> | <b>2-01290</b>  | <b>VSTEI M8X25</b>                 | <b>SCREW M8X25</b>                   |
| <b>80</b> | <b>2-03101</b>  | <b>DADO ES. M10X1,25</b>           | <b>HEXAGON NUT M10X1,25</b>          |
| <b>81</b> | <b>2-00308</b>  | <b>VTCEI M6X10</b>                 | <b>HEX. SOCKET HEAD SCREW M6X10</b>  |
| <b>82</b> | <b>2-00112</b>  | <b>DADO ES. M8</b>                 | <b>HEXAGON NUT M8</b>                |
| <b>83</b> | <b>2-00319</b>  | <b>VTCEI M8X16</b>                 | <b>HEX. SOCKET HEAD SCREW M8X16</b>  |
| <b>84</b> | <b>2-00205</b>  | <b>ROSETTA EL. D.8</b>             | <b>ELASTIC WASHER D.8</b>            |
| <b>85</b> | <b>2-00155</b>  | <b>DADO ES. M6</b>                 | <b>HEXAGON NUT M6</b>                |
| 86        | 4-100182        | BARRA ESAGONALE                    | HEXAGON BAR                          |
| <b>87</b> | <b>2-00025</b>  | <b>SEEGER D.25</b>                 | <b>SEEGER D.25</b>                   |
| <b>88</b> | <b>461504</b>   | <b>MOLLA TORSIONE D.9,4X1,3X25</b> | <b>SPRING D.9,4X1,3X25</b>           |

# GRUPPO TESTINA HEAD GROUP



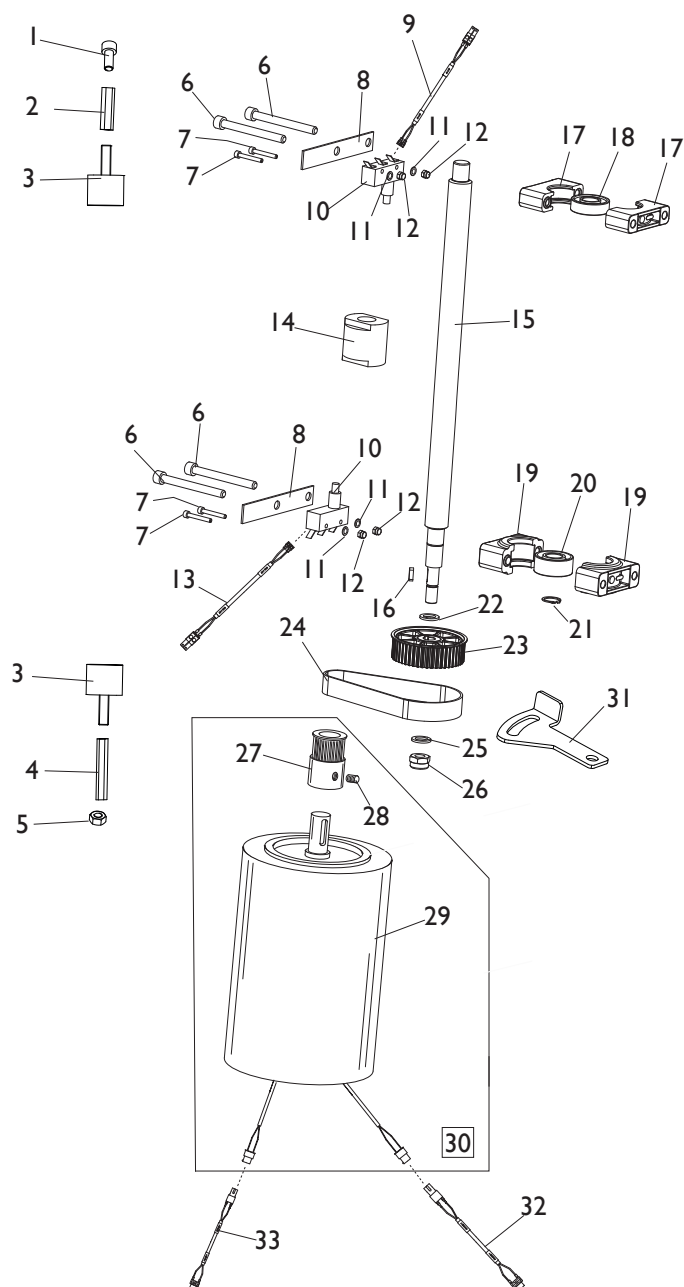
[TORNA AL COMPLESSIVO](#)  
[RETURNS TO OVERALL](#)

| Ref. | Code     | Descrizione                   | Description                       |
|------|----------|-------------------------------|-----------------------------------|
| 1    | 262390   | TESTINA COMPLETA              | HEAD ASSEMBLY                     |
| 2    | 3-01158  | BOCCOLA D.16X12               | BUSHING D.16X12                   |
| 3    | 461489   | INSERTO TESTINA <b>GIALLO</b> | <b>YELLOW</b> INSERT              |
| 4    | 361404   | SUPPORTO TESTINA              | HEAD SUPPORT                      |
| 5    | 361403   | UTENSILE                      | TOOL                              |
| 6    | 2-00711  | VTSPei M6X16                  | CSK FLAT HEAD SCREW SOCKET M6X16  |
| 7    | 5-102716 | CIINDRO ROTAZIONE COMPLETO    | CYLINDER ROTATION ASSEMBLY        |
| 8    | 3-00220  | RACCPN-L-G1/8C-T4             | FITTING 1/4                       |
| 9    | 5-106874 | PIASTRA                       | PLATE                             |
| 10   | 361479   | CREMAGLIERA                   | RACK                              |
| 11   | 2-01020  | DADO ES.N.A. M8               | NORMAL AUTOLOCKING HEXAGON NUT M8 |
| 12   | 3-01408  | VALVOLA                       | VALVE                             |
| 13   | 4-102267 | PIASTRA FISSAGGIO MICRO       | MICRO SUPPORT                     |
| 14   | 4-102259 | REGISTRO                      | REGISTER                          |

| Ref. | Code     | Descrizione                          | Description                        |
|------|----------|--------------------------------------|------------------------------------|
| 15   | 4-102255 | FLANGIA POSTERIORE D.40              | REAR FLANGE D.40                   |
| 16   | 463204   | FLANGIA ANTERIORE D.40               | FRONT FLANGE D.40                  |
| 17   | 461509   | TIRANTE M4X120                       | TIE ROD M4X120                     |
| 18   | 361508   | CAMICIA D.40X79                      | LINER D.40X79                      |
| 19   | 261613   | CIL. MOVIMENTO UTENSILE COMPLETO     | CYLINDER TOOL MOVING ASSEMBLY      |
| 20   | 3-00217  | RACCPN-L-G1/8C-T6                    | FITTING 1/8                        |
| 21   | 361493   | FLANGIA POSTERIORE D.110             | REAR FLANGE D.110                  |
| 22   | 361492   | INGRANAGGIO                          | GEAR                               |
| 23   | 361499   | ATTACCO PISTONE                      | PISTON PORT                        |
| 24   | 2-00298  | VTCEI M5X20                          | CIRCULAR SOCKET HEAD SCREW M5X20   |
| 25   | 3-01159  | BOCCOLA D.60X40                      | BUSHING D.60X40                    |
| 26   | 361495   | PISTONE                              | PISTON                             |
| 27   | 2-71394  | VTE 1/2F M8X100                      | HEX. SOCKET HEAD SCREW 1/2F M8X100 |
| 28   | 361483   | CAMICIA D.110X70                     | LINER D.110X70                     |
| 29   | 361494   | PISTONE                              | PISTON                             |
| 30   | 2-00299  | VTCEI M5X25                          | CIRCULAR SOCKET HEAD SCREW M5X25   |
| 31   | 5-102718 | RACCORDO M5 +VITE M5                 | FITTING M5 WITH SCREW M5           |
| 32   | 2-00360  | VTE M6X12                            | HEXAGON SOCKET HEAD SCREW M6X12    |
| 33   | 361481   | BOCCOLA FINE CORSA                   | BUSHING                            |
| 34   | 320574   | RONDELLA D.6,5X22X3                  | WASHER D.6,5X22X3                  |
| 35   | 5-105584 | LAMIERA+FELTRO                       | SHEET                              |
| 36   | 5-105163 | CILINDRO TRASLAZIONE COMPLETO        | CYLINDER TRANSLATION ASSEMBLY      |
| 37   | 4-116197 | STELO D.15                           | STEM D.15                          |
| 38   | 4-108323 | FLANGIA ANTERIORE D.40               | FRONT FLANGE D.40                  |
| 39   | 4-116196 | CAMICIA D.40X273,5                   | LINER D.40X273,5                   |
| 40   | 4-108322 | FLANGIA POSTERIORE D.40              | REAR FLANGE D.40                   |
| 41   | 4-116198 | TIRANTE M4X310                       | TIE ROD M4X310                     |
| 42   | 2-01018  | DADO ES.N.A M4                       | NORMAL AUTOLOCKING HEXAGON NUT M4  |
| 43   | 4-116202 | SUPPORTO CILINDRO TRASLAZIONE        | CYLINDER TRANSLATION SUPPORT       |
| 44   | 4-116200 | PERNO CILINDRO TRASLAZIONE           | PIN                                |
| 45   | 2-01019  | DADO ES.N.A. M10                     | NORMAL AUTOLOCKING HEX. NUT M10    |
| 46   | 2-00212  | RONDELLA D.8                         | WASHER D.8                         |
| 47   | 361496   | PERNO RULLINO CARRELLO               | ROLLER PIN                         |
| 48   | 461510   | MOLLA                                | SPRING                             |
| 49   | 3-01173  | RASCHIATORE                          | SCRAPER RING                       |
| 50   | 361488   | FULCRO                               | FULCRUM                            |
| 51   | 2-01045  | RONDELLA D.16                        | WASHER D.16                        |
| 52   | 2-71526  | DADO ES.B.A. M16                     | LOWER AUTOLOCKING HEXAGON NUT M16  |
| 53   | 361475   | STELO                                | STEM                               |
| 54   | 356012   | PERNO ECCENTRICO                     | ECCENTRIC PIN                      |
| 55   | 361486   | SPINA CORTA                          | SHORT PIN                          |
| 56   | 361487   | SPINA LUNGA                          | LONG PIN                           |
| 57   | 5-102717 | RULLO                                | ROLLER                             |
| 58   | 2-00663  | DADO ES.B M16                        | LOWER HEXAGON NUT M16              |
| 59   | 361477   | TUBO                                 | TUBE                               |
| 60   | 461476   | RULLO                                | ROLLER                             |
| 61   | 361484   | REGISTRO                             | REGISTER                           |
| 62   | 2-00020  | SEEGER D.4                           | SEEGER D.4                         |
| 63   | 2-01130  | SEEGER D.16                          | SEEGER D.16                        |
| 64   | 5-106097 | CARRELLO CON BOCCOLE                 | TROLLEY+BUSHES                     |
| 65   | 4-102831 | MOLLA A BALESTRA                     | LEAF SPRING                        |
| 66   | 4-102830 | BLOCCHETTO ATTACCO MOLLA             | BLOCK                              |
| 67   | 361485   | BIELLA                               | CONNECTING ROD                     |
| 68   | 4-103075 | RONDELLA DI SPESSORAMENTO            | WASHER                             |
| 69   | 2-01137  | DADO ES.B.A. M8                      | NORMAL AUTOLOCKING HEXAGON NUT M8  |
| 70   | 307643   | RONDELLA D.11,1X17X0,6               | WASHER D.11,1X17X0,6               |
| 71   | 3-01195  | RONDELLA IN RAME                     | COPPER WASHER                      |
| 72   | 245486   | KIT GUARNIZIONI CILINDRO ROTAZIONE   | CYLINDER ROTATION SEALS KIT        |
| 73   | 262525   | KIT GUARNIZIONI CIL. MOVIMENTO UT.   | CYLINDER TOOL MOVING SEALS KIT     |
| 74   | 5-103267 | KIT GUARNIZIONI CILINDRO TRASLAZIONE | CYLINDER TRANSLATION SEALS KIT     |
| 75   | 4-121167 | INSERTO TESTINA ROSSO                | RED INSERT                         |

# GRUPPO TRASLAZIONE VERTICALE

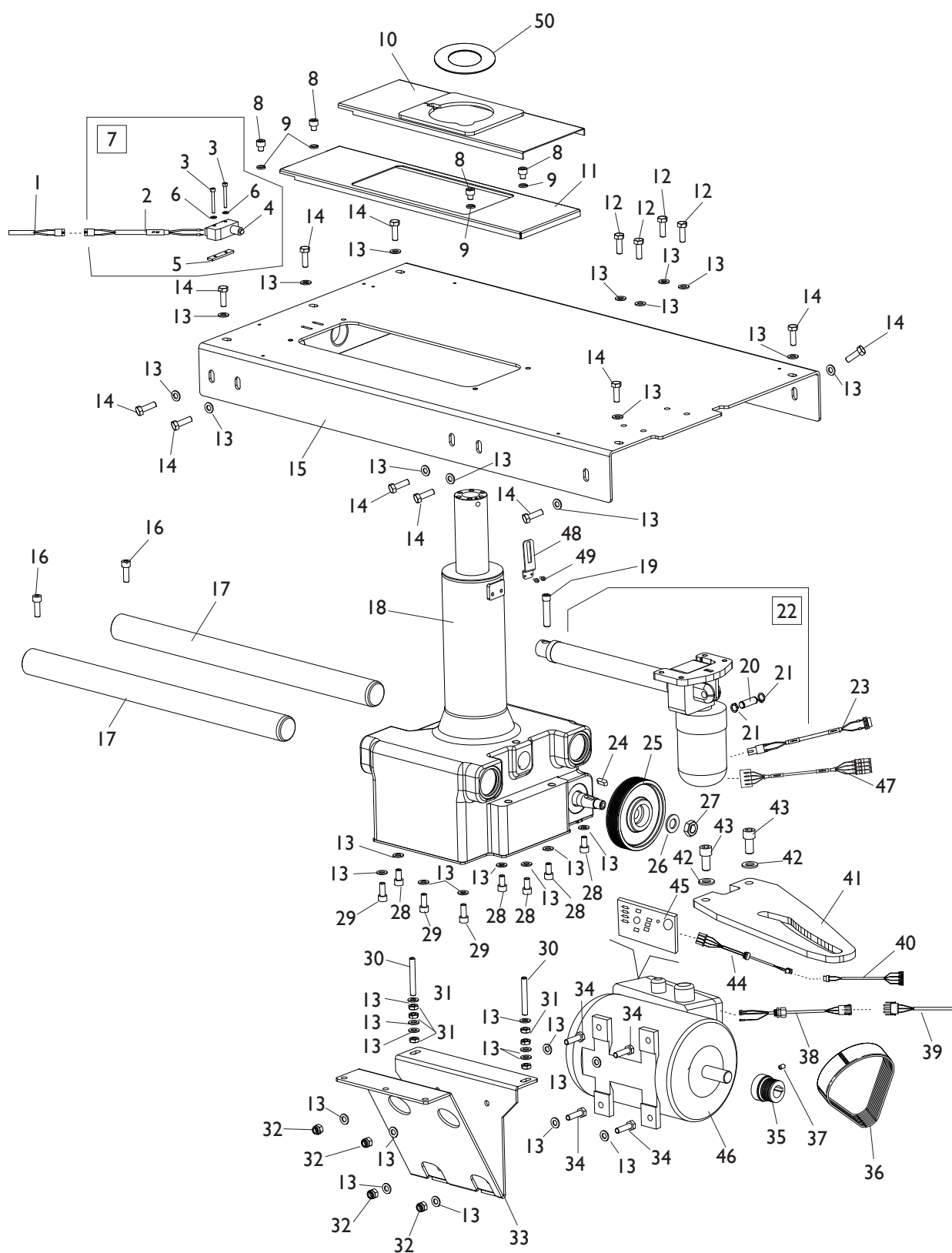
## VERTICAL TRANSLATION GROUP



[TORNA AL COMPLESSIVO](#)  
[RETURNS TO OVERALL](#)

| Rif.<br>Ref. | Codice<br>Code | Descrizione                        | Description                           |
|--------------|----------------|------------------------------------|---------------------------------------|
| 1            | 2-00320        | VTCEI M8X20                        | CIRCULAR SOCKET HEAD SCREW M8X20      |
| 2            | 361607         | DISTANZIALE M8 H45                 | SPACER M8 H45                         |
| 3            | 461612         | ANTIVIBRANTE 30X25 M8X20           | ANTIVIBRATION 30X25 M8X20             |
| 4            | 361606         | COLONNETA ESAGONALE LUNGA          | LONG COLUMN HEX                       |
| 5            | 2-00112        | DADO ES.A. M8                      | AUTOLOCKING HEXAGON NUT M8            |
| 6            | 2-03332        | VTCEI 1/2F M8X80                   | CIRCULAR SOCKET HEAD SCREW 1/2F M8X80 |
| 7            | 2-91668        | VTCEI M4X30                        | CIRCULAR SOCKET HEAD SCREW M4X30      |
| 8            | 361608         | LAMIERA SOSTEGNO                   | MICRO SUPPORT                         |
| 9            | 5-100667       | CAVO COLL.SK - ASSEY UP            | PC BOARD CABLE - Y AXIS UP            |
| 10           | 461380         | MICRO                              | MICROSWITCH                           |
| 11           | 2-00209        | RONDELLA D.4                       | WASHER D.4                            |
| 12           | 2-01018        | DADO ES.N.A. M4                    | NORMAL AUTOLOCKING HEXAGON NUT M4     |
| 13           | 5-100668       | CAVO COLL.SK - ASSEY DOWN          | PC BOARD CABLE - Y AXIS DOWN          |
| 14           | 361603         | CHIOCCIOLA                         | SPIRAL                                |
| 15           | 361598         | ALBERO DI TRASLAZIONE              | SHAFT VERTICAL TRANSLATION            |
| 16           | 2-03072        | LINGUETTA 4X4X14                   | KEY 4X4X14                            |
| 17           | 4-100630       | SEMISUPPORTO CUSCINETTO PICCOLO    | HALF SMALL BEARING SUPPORT            |
| 18           | 2-03071        | CUSCINETTO RADIALE RIGIDO 17X40X12 | BEARING 17X40X12                      |
| 19           | 4-100631       | SEMISUPPORTO CUSCINETTO GRANDE     | HALF BIG BEARING SUPPORT              |
| 20           | 2-03070        | CUSCINETTO OBLIQUO 17X40X17,5      | BEARING 17X40X17,5                    |
| 21           | 2-00889        | SEEGER D.17                        | SEEGER D.17                           |
| 22           | 3-01677        | RONDELLA D.17X24X0,1               | WASHER D.17X24X0,1                    |
| 23           | 4-102438       | PULEGGIA CONDOTTA Z48              | PULLEY Z48                            |
| 24           | 3-01477        | CINGHIA DENTATA                    | TOOTHED BELT                          |
| 25           | 434207         | RONDELLA D.13X20X2                 | RONDELLA D.13X20X2                    |
| 26           | 2-01276        | DADO ES.B.A. M12                   | LOW AUTOLOCKING HEXAGON NUT M12       |
| 27           | 4-102630       | PULEGGIA MOTRICE Z18               | PULLEY Z18                            |
| 28           | 2-02401        | VSTEI M6X12                        | CSK SCREW SOCKET M6X12                |
| 29           | 4-102627       | MOTORE AUTOFRENANTE 48V D.14       | BRAKE MOTOR 48V D.14                  |
| 30           | 5-102715       | MOTORE TRASLAZ. VERTICALE COMPLETO | MOTOR TRANSLATON ASSEMBLY             |
| 31           | 4-102194       | TENDICINGHIA                       | BELT TENSIONER                        |
| 32           | 5-100689       | CAVO COLL. SK - BRAKEY             | PC BOARD CABLE - BRAKEY               |
| 33           | 5-100663       | CAVO COLL.SK - MOTORE ASSEY        | PC BOARD CABLE - ASSEY MOTOR          |

# GRUPPO TRASLAZIONE RUOTA WHEEL TRANSLATION GROUP



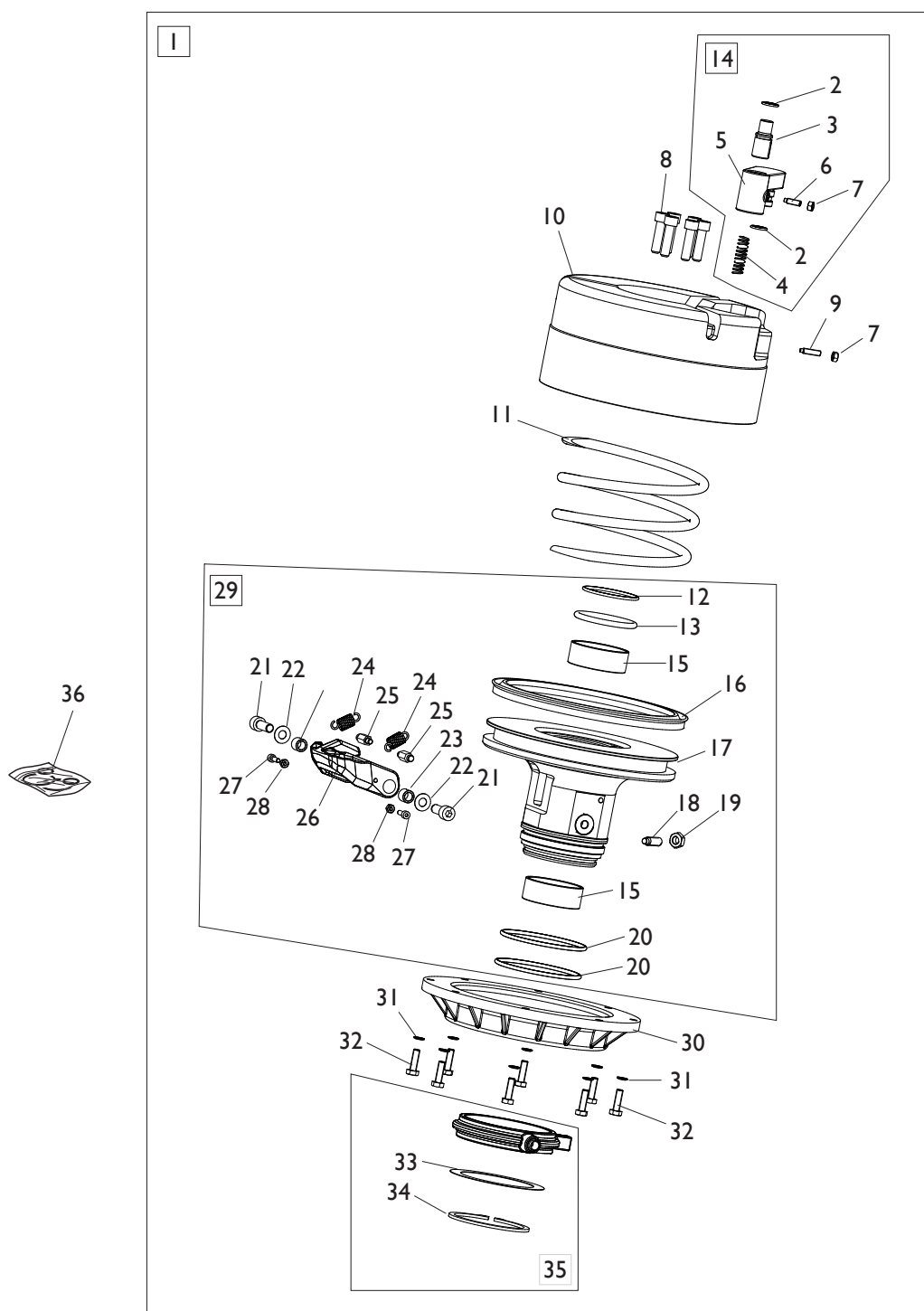
[TORNA AL COMPLESSIVO](#)  
[RETURNS TO OVERALL](#)

| Rif.<br>Ref. | Codice<br>Code  | Descrizione                      | Description                           |
|--------------|-----------------|----------------------------------|---------------------------------------|
| 1            | 5-100669        | CAVO COLL.SK - MICRO AZZERAMENTO | PC BOARD CABLE - MICRO RESET          |
| 2            | 5-102151        | CAVO MICRO AZZERAMENTO           | MICRO RESET CABLE                     |
| 3            | 2-02078         | VTCEI 1/2F M4X30                 | CIRCULAR SOCKET HEAD SCREW 1/2F M4X30 |
| 4            | 4-106284        | MICRO                            | MICROSWITCH                           |
| 5            | 361554          | PIASTRINA MICRO                  | MICRO SUPPORT                         |
| <b>6</b>     | <b>2-00209</b>  | <b>RONDELLA D.4</b>              | <b>WASHER D.4</b>                     |
| 7            | 5-102170        | KIT MICRO AZZERAMENTO            | KIT MICRO RESET                       |
| 8            | 4-103071        | VTCEI SPECIALE M8X8              | SPECIAL CIRC. SOCKET HEAD SCREW M8X8  |
| 9            | 2-02779         | ROSETTA D.8                      | WASHER D.8                            |
| 10           | 4-101410        | PROTEZIONE TRASLAZIONE           | TRANSLATION PROTECTION                |
| 11           | 4-100307        | LAMIERA INFERIORE                | REAR SHEET                            |
| 12           | 2-00372         | VTE M8X16                        | HEXAGON SOCKET HEAD SCREW M8X16       |
| 13           | 2-01114         | RONDELLA D.8                     | WASHER D.8                            |
| 14           | 2-01131         | VTE M8X22                        | HEXAGON SOCKET HEAD SCREW M8X22       |
| <b>15</b>    | <b>4-118100</b> | <b>COPERCHIO</b>                 | <b>COVER</b>                          |
| 16           | 2-00321         | VTCEI M8X25                      | CIRCULAR SOCKET HEAD SCREW M8X25      |
| 17           | 4-100329        | GUIDA ORIZZONTALE                | HORIZONTAL GUIDE                      |
| 18           | 5-190775        | RIDUTTORE CPL.                   | GEARBOX ASSEMBLY                      |
| 19           | 361552          | VSTEI M12X1,25                   | CSK SCREW SOCKET M12X1,25             |
| 20           | 4-103512        | PERNO ATTUATORE                  | ACTUATOR PIN                          |
| 21           | 2-00023         | SEEGER D.10                      | SEEGER D.10                           |
| 22           | 5-102709        | ATTUATORE COMPLETO               | ACTUATOR ASSEMBLY                     |
| 23           | 5-100662        | CAVO COLL.SK - ATTUATORE ASSE X  | PC BOARD CABLE - X AXIS ACTUATOR      |
| 24           | 2-01950         | LINGUETTA D.6X6X18               | KEY D.6X6X18                          |
| 25           | 354082          | PULEGGIA RIDUTTORE D.110         | GEARBOX PULLEY D.110                  |
| 26           | 2-00215         | RONDELLA D.14                    | WASHER D.14                           |
| 27           | 2-00941         | DADO ES.B. M14                   | LOW HEXAGON NUT M14                   |
| 28           | 2-00319         | VTCEI M8X16                      | CIRCULAR SOCKET HEAD SCREW M8X16      |
| 29           | 2-00320         | VTCEI M8X20                      | CIRCULAR SOCKET HEAD SCREW M8X20      |
| 30           | 2-02683         | VSTEI M6X10                      | CSK SCREW SOCKET M6X10                |
| 31           | 2-00156         | DADO ES.B. M8                    | LOW HEXAGON NUT M8                    |
| 32           | 2-01020         | DADO ES.N.A. M8                  | NORMAL AUTOLOCKING HEXAGON NUT M8     |
| 33           | 4-102396        | SUPPORTO MOTORE                  | MOTOR SUPPORT                         |
| <b>34</b>    | <b>2-00322</b>  | <b>VTCEI M8X30</b>               | <b>CIRC. SOCKET HEAD SCREW M8X30</b>  |
| 35           | 4-104329        | PULEGGIA MOTORE                  | MOTOR PULLEY                          |
| 36           | 3-00575         | CINGHIA                          | BELT                                  |
| 37           | 2-00544         | VSTEI M6X10                      | CSK SCREW SOCKET M6X10                |
| 38           | 4-111587        | CAVO ALIMENTAZIONE MOTOINVETER   | POWER CABLE MOTOINVERTER              |
| 39           | 5-105010        | CAVO ALIM.MOTOINV - SK           | MOTOINVERTER POWER CABLE - PC BOARD   |
| 40           | 5-100723        | CAVO COMANDI PEDALIERA           | PEDAL COMMAND CABLE                   |
| 41           | 4-102727        | MOVIMENTAZIONE A CAMMA           | HANDLING CAM                          |
| 42           | 2-00214         | RONDELLA D.12                    | WASHER D.12                           |
| 43           | 2-03144         | VTCEI M12X1,25X25                | CIRC. SOCKET HEAD SCREW M12x1,25x25   |
| 44           | 4-109895        | CAVO COMANDI MOTORE              | MOTOR COMMAND CABLE                   |
| 45           | 4-115395        | SCHEDA MOTOINVERTER 230V         | MOTOINVERTER PC BOARD 230V            |
| 45           | 4-111585        | SCHEDA MOTOINVERTER 115V         | MOTOINVERTER PC BOARD 115V            |
| 46           | 5-104966        | MOTOINVERTER CON CAVI 230V       | MOTOINVERTER ASSEMBLY 230V            |
| 46           | 5-103599        | MOTOINVERTER CON CAVI 115V       | MOTOINVERTER ASSEMBLY 115V            |
| 47           | 5-100664        | CAVO COLL.SK - ENCODER ATTUATORE | PC BOARD CABLE - ACTUATOR ENCODER     |
| 48           | 4-102783        | ANTIROTAZIONE                    | BRACKET                               |
| 49           | 2-00853         | VTCEI M5X12                      | HEX. SOCKET HEAD SCREW M5X12          |
| 50           | 4-100767        | COPERTURA                        | COVER                                 |



# GRUPPO AUTOCENTRANTE

## TURNTABLE GROUP

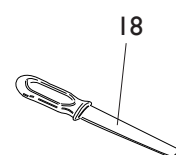
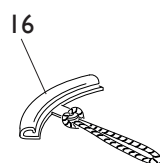
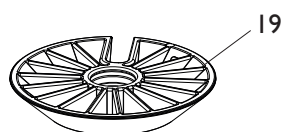
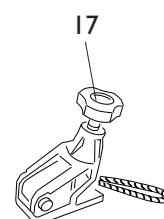
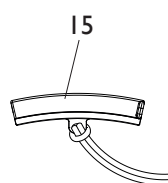
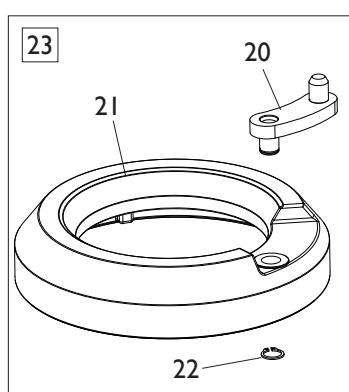
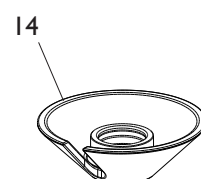
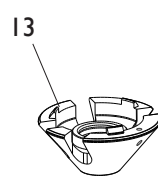
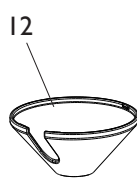
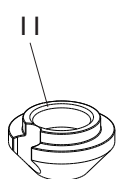
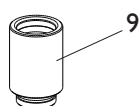
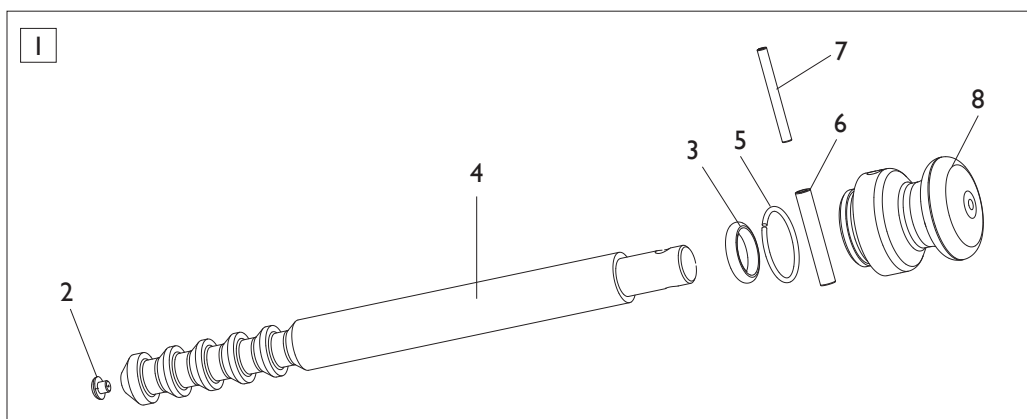


[TORNA AL COMPLESSIVO](#)  
[RETURNS TO OVERALL](#)



| Rif.<br>Ref. | Codice<br>Code | Descrizione                 | Description                   |
|--------------|----------------|-----------------------------|-------------------------------|
| 1            | 5-102705       | AUTOCENTRANTE COMPLETO      | TURNTABLE ASSEMBLY            |
| 2            | 424630         | OR D.12,42X1,78             | O-RING D.12,42X1,78           |
| 3            | 4-102326       | PERNO TRASCINATORE          | PIN                           |
| 4            | 4-102331       | MOLLA PERNO TRASCINATORE    | PIN SPRING                    |
| 5            | 4-103143       | LEVA                        | LEVER                         |
| 6            | 2-02560        | VSTEI M5X16                 | CSK SCREW SOCKET M5X16        |
| 7            | 2-00676        | DADO ES.N. M5               | NORMAL HEXAGON NUT M5         |
| 8            | 4-102325       | VTCEI SPECIALE M8X30        | SPEC. HEX. HEAD SCREW M8X70   |
| 9            | 2-03337        | VSTEI M5X20                 | SCREW M5X20                   |
| 10           | 4-102070       | CENTRAGGIO RUOTE            | TURNTABLE                     |
| 11           | 4-102327       | MOLLA COMPR. D.143X9X110    | COMPRESSOR SPRING D.143X9X110 |
| 12           | 3-01150        | O-RING D.48,89X2,62         | O-RING D.48,89X2,62           |
| 13           | 3-01152        | GUARNIZIONE M5 D.60X50X5    | SEAL M5 D.60X50X5             |
| 14           | 5-102707       | KIT LEVA CON PERNO          | LEVER KIT                     |
| 15           | 3-00647        | BOCCOLA D.50X20             | BUSH D.50X20                  |
| 16           | 433339         | GUARNIZIONE D.184X165X11,11 | SEAL D.184X165X11,11          |
| 17           | 4-106066       | PISTONE D.184X117           | PISTON D.184X117              |
| 18           | 2-01322        | VTSTEI M8X25                | SCREW M8X25                   |
| 19           | 2-00156        | DADO ES. M8                 | HEXAGON NUT M8                |
| 20           | 438689         | O-RING D.75,80X3,53         | O-RING D.75,80X3,53           |
| 21           | 2-03348        | VTCEI M8X22                 | HEX. SOCKET HEAD SCREW M8X22  |
| 22           | 309358         | RONDELLA D.8X16,5X0,5       | WASHER D.8X16,5X0,5           |
| 23           | 361278         | DISTANZIALE D.11,85X8X10    | SPACER D.11,85X8X10           |
| 24           | 3-10008        | MOLLA TRAZIONE              | SPRING                        |
| 25           | 4-130262       | GANCIO ATTACCO MOLLA        | SPRING HOOK                   |
| 26           | 4-106063       | CRICCHETTO                  | HOOK                          |
| 27           | 2-00733        | VTCEI M4X12                 | HEX. SOCKET HEAD SCREW M4X12  |
| 28           | 2-00143        | DADO ES. M4                 | HEXAGON NUT M4                |
| 29           | 5-102683       | KIT PISTONE                 | PISTON KIT                    |
| 30           | 4-101891       | COPERCHIO CILINDRO          | CYLINDER COVER                |
| 31           | 4-105166       | RONDELLA D.6,4X10X1,3       | WASHER D.6,4X10X1,3           |
| 32           | 2-03471        | VTE M6X20                   | HEXAGON HEAD SCREW M6X20      |
| 33           | 4-104408       | RONDELLA D.70X90X0,5        | WASHER D.70X90X0,5            |
| 34           | 2-71590        | SEEGER D.70                 | SEEGER D.70                   |
| 35           | 5-102706       | RACCORDO GIREVOLE           | ROTATING JOINT                |
| 36           | 5-102708       | KIT GUARNIZIONI CILINDRO    | CYLINDER SEALS KIT            |

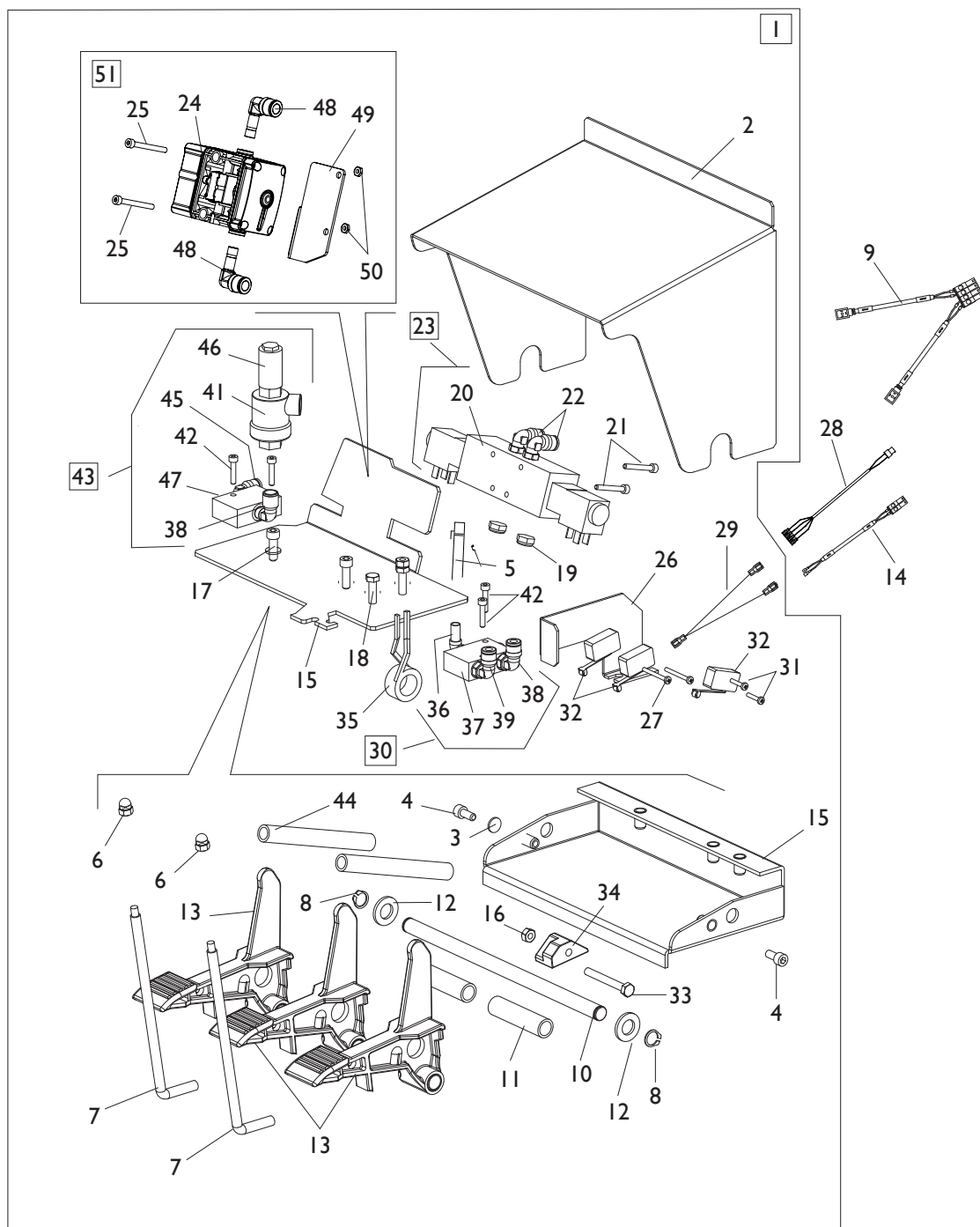
# MANIGLIA BLOCCAGGIO RUOTA HANDLE LOCKING WHEEL



[TORNA AL COMPLESSIVO](#)  
[RETURNS TO OVERALL](#)

| Rif.<br>Ref. | Codice<br>Code | Descrizione                        | Description                   |
|--------------|----------------|------------------------------------|-------------------------------|
| 1            | 5-100683       | MANIGLIA BLOCCAGGIO RUOTA          | HANDLE LOCKING WHEEL ASSEMBLY |
| 2            | 461560         | PROTEZIONE                         | RUBBER                        |
| 3            | 3-01164        | O-RING D.20X6                      | O-RING D.20X6                 |
| 4            | 4-102345       | BARRA D.26,5                       | BAR D.26,5                    |
| 5            | 2-03236        | SEEGER D.40                        | SEEGER D.40                   |
| 6            | 2-01932        | SPINA D.8X55                       | PIN D.8X55                    |
| 7            | 2-02896        | SPINA D.5X55                       | PIN D.5X55                    |
| 8            | 362464         | IMPUGNATURA                        | KNOB                          |
| 9            | 263436         | PROLUNGA MANIGLIA                  | HANDLE EXTENTION              |
| 10           | 462414         | CONO D.54                          | CONE D.54                     |
| 11           | 4-118295       | CONO D.74                          | CONE D.74                     |
| 12           | 461668         | CUFFIA PROTEZIONE CONO D.120       | PROTECTION CONE D.120         |
| 13           | 4-102353       | CONO D.120                         | CONE D.120                    |
| 14           | 4-102346       | CONO D.145                         | CONE D.145                    |
| 15           | 5-491007       | <b>KIT 3 PARABORDI CORTI</b>       | <b>THREE SHORT FENDER KIT</b> |
| 16           | 2201716        | <b>KIT 3 PARABORDI</b>             | <b>TREE FENDER KIT</b>        |
| 17           | 262417         | <b>PINZA RUN FLAT</b>              | <b>CLAMP RUN FLAT</b>         |
| 18           | 4-405496       | <b>PROTEZIONE TALLONE</b>          | <b>HEEL PROTECTION</b>        |
| 19           | 461667         | <b>CONO D.187</b>                  | <b>CONE D.187</b>             |
| 20           | 4-103110       | <b>MANOVELLA</b>                   | <b>CRANK</b>                  |
| 21           | 4-102360       | <b>ANELLO DISTANZIALE</b>          | <b>SPACER RING</b>            |
| 22           | 2-00026        | <b>SEEGER D.14</b>                 | <b>SEEGER D.14</b>            |
| 23           | 5-100690       | <b>ANELLO DISTANZIALE COMPLETO</b> | <b>SPACER RING ASSEMBLY</b>   |

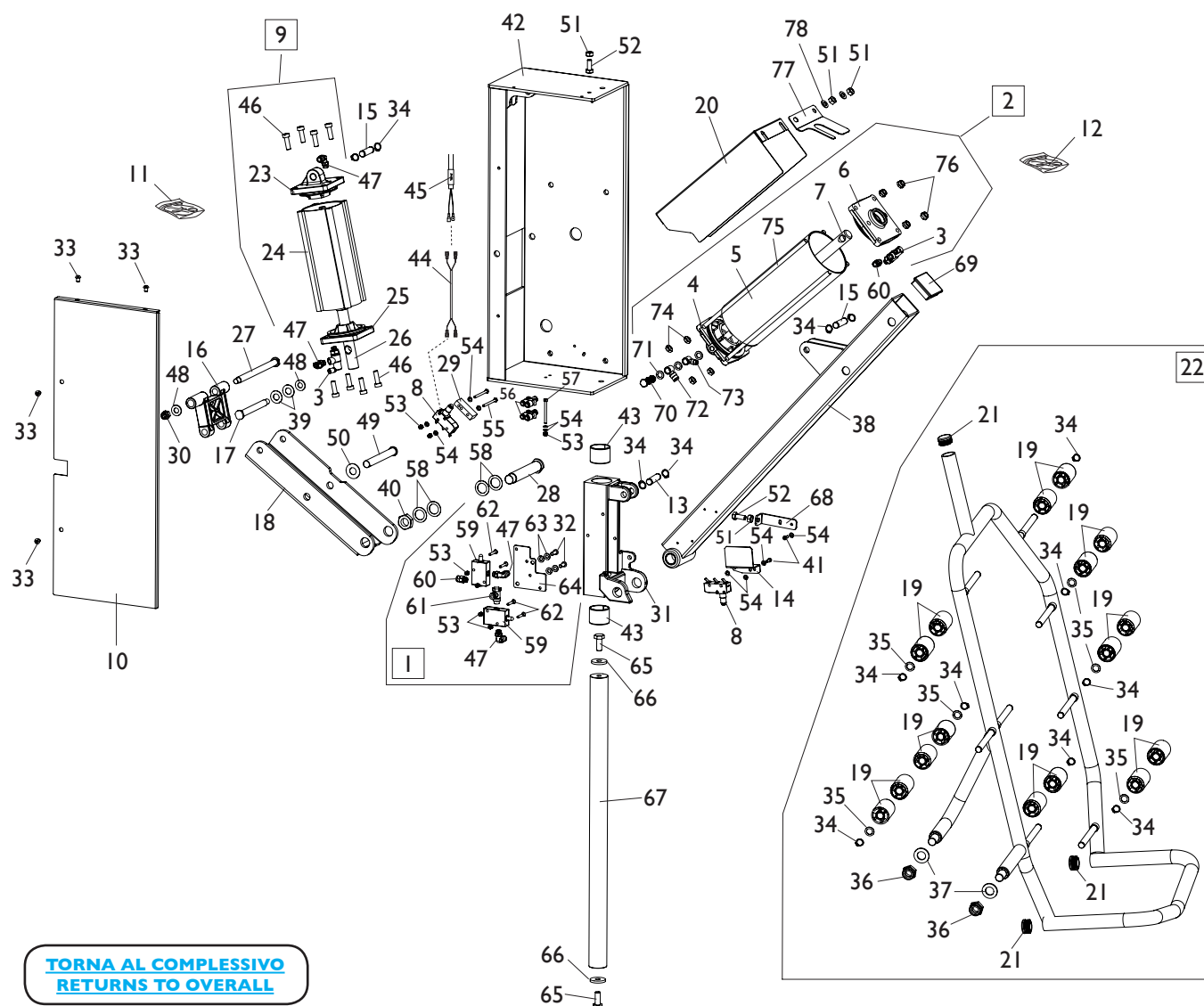
# GRUPPO PEDALIERA PEDAL GROUP



[TORNA AL COMPLESSIVO](#)  
[RETURNS TO OVERALL](#)

| Rif.<br>Ref. | Codice<br>Code | Descrizione                          | Description                       |
|--------------|----------------|--------------------------------------|-----------------------------------|
| 1            | 5-100735       | PEDALIERA COMANDI COMPLETA           | PEDAL ASSEMBLY                    |
| 2            | 361536         | COPERCHIO PEDALIERA                  | PEDAL COVER                       |
| 3            | 2-00211        | RONDELLA D.6                         | WASHER D.6                        |
| 4            | 2-00309        | VTCEI M6X16                          | CIRC. SOCKET HEAD SCREW M6X16     |
| 5            | 5-100129       | TUBO DI GONFIAGGIO                   | INFLATING HOSE                    |
| 6            | 2-00104        | DADO ES.CIECO M6                     | HEXAGON NUT M6                    |
| 7            | 361537         | TONDO D.8                            | PIN D.8                           |
| 8            | 2-00025        | ANELLO D.12                          | SEGER D.12                        |
| 9            | 5-100660       | CAVO COLL.SK - EV1/EV2               | PC BOARD CABLE - EV1/EV2          |
| 10           | 4-102179       | PERNO                                | PIN                               |
| 11           | 361534         | DISTANZIALE PEDALI D.16X64           | PEDALS SPACER D.16X64             |
| 12           | 2-00214        | RONDELLA D.14                        | WASHER D.14                       |
| 13           | 5-102714       | PEDALE                               | PEDAL                             |
| 14           | 5-100722       | CAVO ROT.AUTOCENTRANTE               | CABLE TURNTABLE ROTATION          |
| 15           | 5-101167       | BASAMENTO PEDALIERA                  | PEDAL BASE                        |
| 16           | 2-00150        | DADO ES.N. M6                        | NORMAL HEXAGON NUT M6             |
| 17           | 2-00310        | VTCEI M6X20                          | CIRC. SOCKET HEAD SCREW M6X20     |
| 18           | 2-00362        | VTE M6X20                            | HEX. SOCKET HEAD SCREW M6X20      |
| 19           | 3-00181        | SILENZIATORE 1/8                     | SILENCER 1/8                      |
| 20           | 3-01168        | ELETTROVALVOLA                       | ELECTRIC VALVE                    |
| 21           | 2-91668        | VTCEI M4X30                          | CIRC. SOCKET HEAD SCREW M4X30     |
| 22           | 3-00053        | RACCPN-LO-G1/8G-T6                   | FITTING 1/8                       |
| 23           | 5-100625       | VALVOLA MOVIMENTO UTENSILE           | VALVE TOOL MOVEMENT               |
| 24           | 3-03313        | <b>LIMITATORE DI GONFIAGGIO</b>      | <b>LIMITER INFLATION</b>          |
| 25           | 2-00851        | VTCEI 1/2F M4X40                     | CIRC. HEAD SCREW 1/2F M4X40       |
| 26           | 361524         | LAMIERA SUPPORTO MICRO               | MICRO SUPPORT                     |
| 27           | 2-00578        | VTCIC M3X30                          | SCREW M3X30                       |
| 28           | 5-100723       | CAVO COMANDI PEDALIERA               | PEDAL COMMAND CABLE               |
| 29           | 4-101698       | CAVO PONTE                           | CABLE                             |
| 30           | 5-100628       | VALVOLA DI GONFIAGGIO                | INFLATING VALVE                   |
| 31           | 2-00576        | VTCIC M3X20                          | SCREW M3X20                       |
| 32           | 440874         | MICRO                                | MICROSWITCH                       |
| 33           | 2-00368        | VTE M6X50                            | HEX. SOCKET HEAD SCREW M6X60      |
| 34           | 461535         | BLOCCETTO MICRO                      | BLOCK                             |
| 35           | 4-109664       | MOLLA COMANDO INTERRUETTORE          | COMMAND SPRING                    |
| 36           | 3-01176        | RACCPN-RESCA-L-G1/8-T6               | RESCA FITTING 1/8                 |
| 37           | 3-01178        | VALVOLA                              | VALVE                             |
| 38           | 3-00218        | RACCPN-L-G1/8C-T8                    | FITTING 1/8                       |
| 39           | 3-00049        | RACCPN-LO-G1/8G-T8                   | FITTING 1/8                       |
| 41           | 3-00317        | VALVOLA G1/4                         | VALVE G1/4                        |
| 42           | 2-00291        | VTCEI M4X20                          | CIRC. SOCKET HEAD SCREW M4X20     |
| 43           | 5-102713       | VALVOLA SCARICO RAPIDO               | VALVE ASSEMBLY                    |
| 44           | 410628         | MOLLA D.14X2X105                     | SPRING D.14X2X105                 |
| 45           | 3-00138        | RACCPN-L-G1/8"C- G1/8" M/F           | L-FITTING-G1/8"C- G1/8" M/F       |
| 46           | 3-00186        | SILENZATORE G1/4                     | SILENCER G1/4                     |
| 47           | 3-00365        | VALVOLA 1/8                          | VALVE 1/8                         |
| 48           | 3-03504        | <b>RACCPN-GOMITO-T-T-T8</b>          | <b>FITTING T-T-T8</b>             |
| 49           | 4-121270       | <b>STAFFA VALVOLA GONFIAGGIO</b>     | <b>BRACKET</b>                    |
| 50           | 2-02804        | <b>DADO ES. M4</b>                   | <b>HEXAGON NUT M4</b>             |
| 51           | 5-107578       | <b>LIMITATORE DI GONFIAGGIO CPL.</b> | <b>LIMITER INFLATION ASSEMBLY</b> |

# GRUPPO SOLLEVATORE LIFTER GROUP

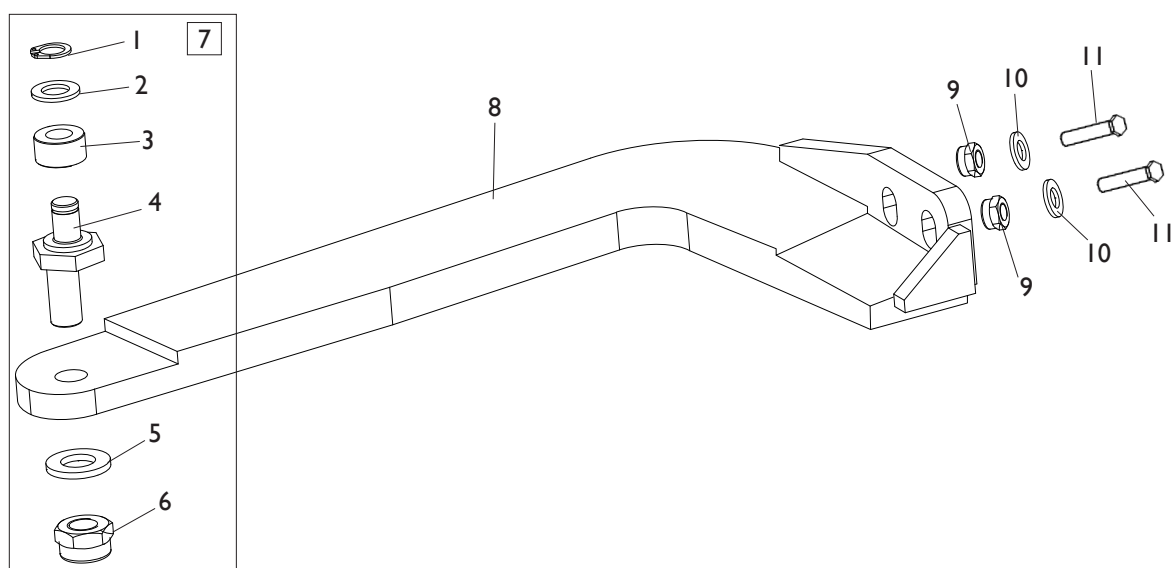


**TORNA AL COMPLESSIVO  
RETURNS TO OVERALL**

| Ref. | Code     | Descrizione                   | Description                  |
|------|----------|-------------------------------|------------------------------|
| 1    | 5-101522 | GRUPPO VALVOLE                | VALVES ASSEMBLY              |
| 2    | 5-101184 | CILINDRO D.95X217,5           | CYLINDER ASSEMBLY D.95X217,5 |
| 3    | 3-01175  | VLAVOLA PILOTA                | VALVE                        |
| 4    | 4-116980 | FLANGIA POST. D.95            | REAR FLANGE D.95             |
| 5    | 4-116999 | CAMICIA D.95X256,5            | LINER D.95X256,5             |
| 6    | 5-105114 | FLANGIA ANT. D.95             | FRONT FLANGE D.95            |
| 7    | 4-116979 | STELO D.20X364                | STEM D.20X364                |
| 8    | 461380   | MICRO 16A                     | MICRO 16A                    |
| 9    | 5-101529 | CILINDRO D.75X158             | CYLINDER D.75X158            |
| 10   | 361356   | LAMIERA DI CHIUSURA           | METAL SHEET                  |
| 11   | 262382   | KIT GUARNIZIONI CILINDRO D.75 | SEALS KIT FOR CYLINDER D.75  |
| 12   | 241484   | KIT GUARNIZIONI CILINDRO D.95 | SEALS KIT FOR CYLINDER D.95  |
| 13   | 361350   | PERNO FLANGIA                 | FLANGE PIN                   |
| 14   | 361345   | LAMIERA SUPPORTO MICRO        | MICRO PLATE                  |
| 15   | 361349   | PERNO STELO                   | STEM PIN                     |
| 16   | 4-100627 | BIELLA CORTA                  | SHORT TRACE                  |
| 17   | 361348   | PERNO FULCRO D.12             | FULCRUM PIN D.12             |
| 18   | 361333   | BIELLA                        | TRACE                        |

| Ref. | Code            | Descrizione                       | Description                         |
|------|-----------------|-----------------------------------|-------------------------------------|
| 19   | 4-103619        | RULLO SOLLEVATORE                 | ROLLER                              |
| 20   | 4-103618        | LAMIERA PROTEZIONE                | CYLINDER COVER                      |
| 21   | 456036          | TAPPO TONDO D.25 H.14             | ROUND CAP D.25 H.14                 |
| 22   | 5-101241        | SUPPORTO RUOTA CPL.               | WHEEL SUPPORT ASSEMBLY              |
| 23   | <b>4-130464</b> | <b>FLANGIA POST. D.81X81X56,5</b> | <b>REAR FLANGE D.81X81X56,5</b>     |
| 24   | <b>4-130461</b> | <b>CAMICIA D.75X201</b>           | <b>LINER D.75X201</b>               |
| 25   | <b>5-121316</b> | <b>FLANGIA ANT. D.81X81X32,5</b>  | <b>FRONT FLANGE D.81X81X32,5</b>    |
| 26   | <b>4-130458</b> | <b>STELO D.20X327,5</b>           | <b>STEM D.20X327,5</b>              |
| 27   | 361353          | PERNO                             | PIN                                 |
| 28   | 361346          | PERNO FULCRO D.20                 | FULCRUM PIN D.20                    |
| 29   | 361371          | PIASTRA DISTANZIALE 45X20         | SPACER 45X20                        |
| 30   | 422289          | DADO ES.A. M10                    | AUTOLOCKING HEXAGON NUT M10         |
| 31   | 261732          | SUPPORTO CON BOCCOLE              | SUPPORT WITH BUSH                   |
| 32   | 2-02155         | VTBEI M6X16                       | SCREW M6X16                         |
| 33   | 2-02151         | VTBEI M6X8                        | SCREW M6X8                          |
| 34   | 2-00025         | SEEGER D.12                       | SEEGER D.12                         |
| 35   | 315274          | RONDELLA D.12X18X0,5              | WASHER D.12X18X0,5                  |
| 36   | 2-71526         | DADO ES.A. M16                    | AUTOLOCKING HEAXAGON NUT M16        |
| 37   | 2-01045         | RONDELLA D.17                     | WASHER D.17                         |
| 38   | 4-103621        | TUBO SOLLEVATORE                  | LIFTER ARM                          |
| 39   | 462117          | RONDELLA D.12X24X0,5              | WASHER D.12X24X0,5                  |
| 40   | 2-01092         | DADO ES. M18X1,5                  | HEXAGO NUT M18X1,5                  |
| 41   | 2-71389         | VTE 1/2F M4X45                    | HEXAGON HEAD SCREW 1/2F M4X45       |
| 42   | 261370          | LAMIERA TELAIO                    | BODY                                |
| 43   | 3-00623         | BOCCOLA D.35X39X30                | BUSH D.35X39X30                     |
| 44   | 262169          | CAVO 2XI L.1000mm                 | CABLE 2XI L.1000mm                  |
| 45   | 5-100666        | CAVO COLL. SK - MICRO SOLLEVATORE | PC BOARD CABLE - MICRO LIFTER       |
| 46   | <b>2-02301</b>  | <b>VTCEI B. M8X25</b>             | <b>HEX. SOCKET HEAD SCREW M8X25</b> |
| 47   | <b>3-00053</b>  | <b>RACCPN-LO- GI/8-T6</b>         | <b>LO-FITTING-GI/8-T6</b>           |
| 48   | <b>2-00213</b>  | <b>RONDELLA D.10</b>              | <b>WASHER D.10</b>                  |
| 49   | <b>361347</b>   | <b>PERNO FULCRO D.14</b>          | <b>FULCRUM PIN D.14</b>             |
| 50   | <b>354594</b>   | <b>RONDELLA D.14,2X30X1</b>       | <b>WASHER D.14,2X30X1</b>           |
| 51   | <b>2-00151</b>  | <b>DADO ES. M8</b>                | <b>HEXAGON NUT M8</b>               |
| 52   | <b>2-00373</b>  | <b>VTE M8X20</b>                  | <b>HEXAGON HEAD SCREW M8X20</b>     |
| 53   | <b>2-01018</b>  | <b>DADO ES. A. M4</b>             | <b>AUTOLOCKING HEX. NUT M4</b>      |
| 54   | <b>2-00209</b>  | <b>RONDELLA D.4</b>               | <b>WASHER D.4</b>                   |
| 55   | <b>2-02207</b>  | <b>VTE M4X50</b>                  | <b>HEXAGON HEAD SCREW M4X50</b>     |
| 56   | <b>3-01866</b>  | <b>RACCPN-Y-T6-PLASTICA</b>       | <b>Y-PLASTIC FITTING-T6</b>         |
| 57   | <b>2-02588</b>  | <b>VTCEI M4X35</b>                | <b>HEX. SOCKET HEAD SCREW M4X35</b> |
| 58   | <b>319921</b>   | <b>RONDELLA D.20X30X0,3</b>       | <b>WASHER D.20X30X0,3</b>           |
| 59   | <b>3-01865</b>  | <b>VALVOLA</b>                    | <b>VALVE</b>                        |
| 60   | <b>3-00461</b>  | <b>RACCPN-D-GI/8G-T6</b>          | <b>D-FITTING-GI/8G-T6</b>           |
| 61   | <b>4-104740</b> | <b>REGOLATORE DI FLUSSO GI/8</b>  | <b>FLOW REGULATOR GI/8</b>          |
| 62   | <b>2-02637</b>  | <b>VTSPEI M4X25</b>               | <b>SCREW M4X25</b>                  |
| 63   | <b>2-00211</b>  | <b>RONDELLA D.6</b>               | <b>WASHER D.6</b>                   |
| 64   | <b>4-104737</b> | <b>LAMIERA FISS. VALVOLE</b>      | <b>PLATE</b>                        |
| 65   | <b>2-00380</b>  | <b>VTE M10X25</b>                 | <b>HEXAGON HEAD SCREW M10X25</b>    |
| 66   | <b>312873</b>   | <b>RONDELLA D.10X30X4</b>         | <b>WASHER D.10X30X4</b>             |
| 67   | <b>361339</b>   | <b>BARRA VERTICALE</b>            | <b>BAR</b>                          |
| 68   | <b>4-104741</b> | <b>LAMIERA MICRO</b>              | <b>PLATE</b>                        |
| 69   | <b>460854</b>   | <b>TAPPO QUADRO 50X14</b>         | <b>CAP 50X14</b>                    |
| 70   | <b>3-00075</b>  | <b>VITE FORATA DOPPIA GI/8</b>    | <b>SCREW TWO HOLES GI/8</b>         |
| 71   | <b>3-00451</b>  | <b>RONDELLA ALLUMINIO 1/8</b>     | <b>ALUMINIUM WASHER 1/8</b>         |
| 72   | <b>3-00515</b>  | <b>RACCPN-ANELLO-GI/8-T6</b>      | <b>FITTING-GI/8-T6</b>              |
| 73   | <b>3-00514</b>  | <b>RACCPN-ANELLO-GI/8-T4</b>      | <b>FITTING-GI/8-T4</b>              |
| 74   | <b>2-00156</b>  | <b>DADO ES. M8</b>                | <b>HEXAGON NUT M8</b>               |
| 75   | <b>4-116978</b> | <b>TIRANTE D.7X313 M8</b>         | <b>TIE ROD D.7X313 M8</b>           |
| 76   | <b>2-01137</b>  | <b>DADO ES.A. M8</b>              | <b>AUTOLOCKING HEXAGON NUT M8</b>   |
| 77   | <b>4-105510</b> | <b>LAMIERA PROT. CILINDRO</b>     | <b>PLATE</b>                        |
| 78   | <b>2-00212</b>  | <b>RONDELLA D.8</b>               | <b>WASHER D.8</b>                   |

# GRUPPO ROTAZIONE STALLONATORE BEAD BREAKER ROTATION GROUP

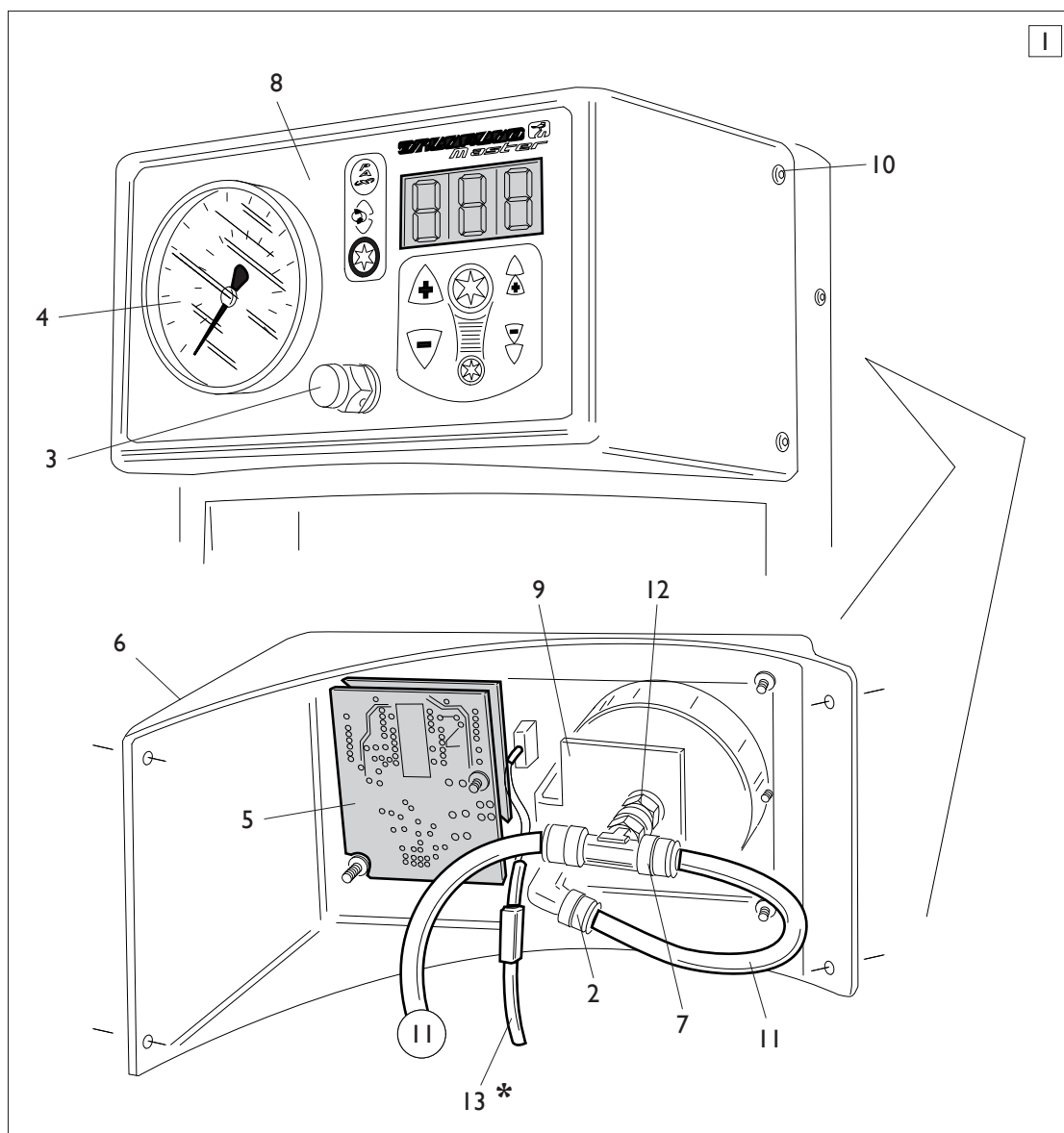


[TORNA AL COMPLESSIVO](#)  
[RETURNS TO OVERALL](#)



| Rif.<br>Ref. | Codice<br>Code | Descrizione            | Description                      |
|--------------|----------------|------------------------|----------------------------------|
| 1            | 2-00023        | SEEGER D.10            | SEEGER D.10                      |
| 2            | 2-00214        | RONDELLA D.12          | WASHER D.12                      |
| 3            | 2-03061        | ROTELLA                | ROLLER                           |
| 4            | 361308         | ECCENTRICO             | ECCENTRIC                        |
| 5            | 354588         | RONDELLA D.10,5X18X1,5 | WASHER D.10,5X18X1,5             |
| 6            | 2-01276        | DADO ES.B.A. M12       | LOW AUTOLOCKING HEXAGON NUT M12  |
| 7            | 262387         | ECCENTRICO COMPLETO    | ECCENTRIC ASSEMBLY               |
| 8            | 4-100337       | BRACCIO ROTAZIONE      | ROTATION ARM                     |
| 9            | 2-71525        | DADO ES.B.A. M10       | LOW AUTOLOCKING HEXAGON NUT M10  |
| 10           | 2-02494        | RONDELLA D.10          | WASHER D.10                      |
| 11           | 2-03157        | VTE M10X70             | HEXAGON SOCKET HEAD SCREW M10X70 |

# GRUPPO MANOMETRO PRESSURE GAUGE GROUP



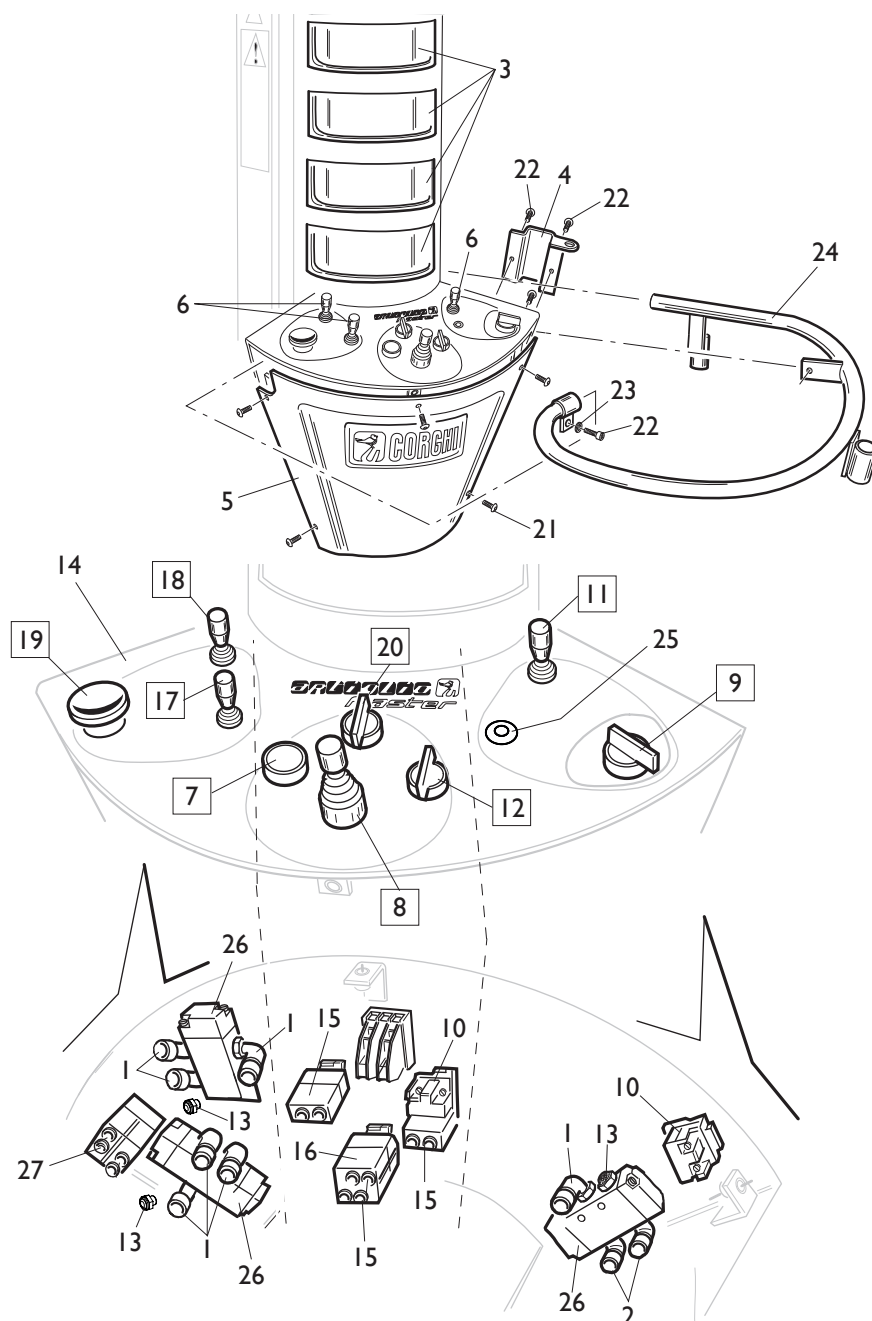
**\* NON INCLUSO  
NO INCLUDED**

[TORNA AL COMPLESSIVO  
RETURNS TO OVERALL](#)

| Rif.<br>Ref. | Codice<br>Code | Descrizione                       | Description                            |
|--------------|----------------|-----------------------------------|--|
| 1            | 5-100642       | GRUPPO MANOMETRO <b>BAR/PSI</b>   | PRESSURE GAUGE <b>BAR/PSI</b> PRESSURE |
| 1            | 5-105053       | GRUPPO MANOMETRO <b>BAR</b>       | PRESSURE GAUGE <b>BAR</b> ASSEMBLY     |
| 2            | 3-00055        | RACCPN-LO-G1/4G-T8                | FITTING 1/4                            |
| 3            | 235463         | VALVOLA DI SGONFIAGGIO            | DEFLATION VALVE                        |
| 4            | 3-00486        | MANOMETRO <b>BAR</b>              | PRESSURE GAUGE <b>BAR</b>              |
| 4            | 3-00490        | MANOMETRO <b>BAR/PSI</b>          | PREUSSRE GAUGE <b>BAR/PSI</b>          |
| 4            | 3-00493        | MANOMETRO <b>KPA</b>              | PREUSSRE GAUGE <b>KPA</b>              |
| 5            | 4-101923       | SK P2K                            | BOARD P2K                              |
| 6            | 4-101139       | CARTER                            | COVER                                  |
| 7            | 3-00287        | RACCPN-TO-G1/4CG-T8               | TO-FITTING-G1/4CG-T8                   |
| 8            | 4-100148       | PANNELLO DISPLAY                  | DISPLAY PANEL                          |
| 9            | 361797         | LAMIERA SUPPORTO MANOMETRO        | PRESSURE GAUGE COVER                   |
| 10           | 2-02145        | VTBEI M4X10                       | ROUNDED HEAD SCREW SOCKET M4X10        |
| 11           | 362900         | <b>TUBO 8X1 L.260mm</b>           | <b>PIPE 8X1 L.260mm</b>                |
| 12           | 3-00101        | <b>RACCPN-MANICOTTO-G1/4-G1/4</b> | <b>RACCPN-G1/4-G1/4</b>                |
| * 13         | 5-100648       | <b>CAVO CONSOLLE</b>              | <b>CONSOLE CABLE</b>                   |

**\* NON INCLUSO**  
**NO INCLUDED**

# GRUPPO CONSOLLE COMANDI COMMAND CONSOLE GROUP

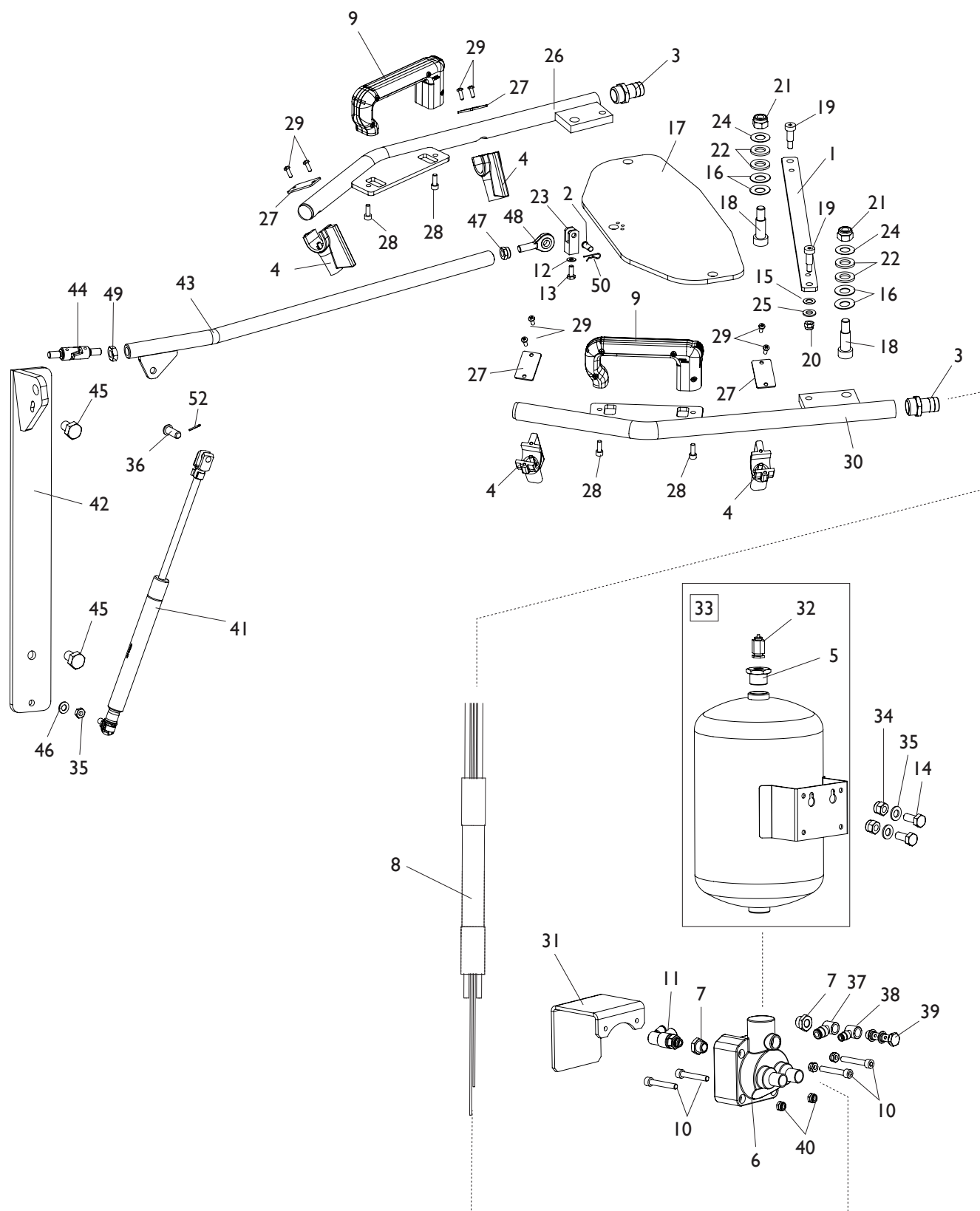


[TORNA AL COMPLESSIVO](#)  
[RETURNS TO OVERALL](#)

| Rif.<br>Ref. | Codice<br>Code  | Descrizione                      | Description                     |
|--------------|-----------------|----------------------------------|---------------------------------|
| 1            | 3-00049         | RACCPN-LO-G1/8G-T8               | LO-FITTING-G1/8G-T8             |
| 2            | 3-00053         | RACCPN-LO-G1/8-T6                | LO-FITTING-G1/8-T6              |
| 3            | 461850          | VASCHETTA                        | HOLDER                          |
| 4            | 361271          | SUPPORTO ATTREZZI                | SUPPORT                         |
| 5            | 461849          | COFANO                           | COVER                           |
| 6            | 440585          | IMPUGNATURA                      | HANDLE                          |
| 7            | 261836          | COMANDO <b>RICERCA UTENSILE</b>  | <b>TOOL</b> COMMAND             |
| 8            | 261838          | MANIPOLATORE <b>TESTINA</b>      | <b>HEAD</b> COMMAND             |
| 9            | 261839          | COMANDO <b>PAX</b>               | <b>PAX</b> COMMAND              |
| 10           | 461843          | CONTATTO                         | CONTACT                         |
| 11           | 261833          | COMANDO <b>SOLLEVATORE</b>       | <b>LIFTER</b> COMMAND           |
| 12           | 261835          | COM. <b>SMONT./ARRETRAMENTO</b>  | <b>DEMOUNTING</b> COMMAND       |
| 13           | 3-00181         | SILENZIATORE IN ACCIAIO 1/8      | SILENCER 1/8                    |
| 14           | 461848          | ADESIVO PANNELLO                 | PANEL LABEL                     |
| 15           | 461841          | VALVOLA <b>NC</b>                | VALVE <b>NC</b>                 |
| 16           | 461844          | VALVOLA <b>NO</b>                | VALVE <b>NO</b>                 |
| 17           | 5-100089        | COMANDO <b>STALLONATORE INF.</b> | <b>LOWER BEAD</b> COMMAND       |
| 18           | 5-100085        | COMANDO <b>STALLONATORE SUP.</b> | <b>UPPER BEAD</b> COMMAND       |
| 19           | 5-100087        | COMANDO <b>PENETRAZIONE</b>      | <b>INSERTION</b> COMMAND        |
| 20           | 5-102719        | COMANDO <b>ROTAZIONE TESTINA</b> | <b>ROTATION TOOL</b> COMMNAD    |
| 21           | 2-02177         | VTBEI M4X12                      | SCREW M4X12                     |
| 22           | 2-00309         | VTCEI M6X16                      | HEXAGON SOCKET HEAD SCREW M6X16 |
| 23           | 2-00211         | RONDELLA D.6                     | WASHER D.6                      |
| 24           | 4-102637        | TUBO PROTEZIONE CONSOLLE         | CONSOLLE PROTECTION             |
| <b>25</b>    | <b>4-101337</b> | <b>TAPPO TONDO D.15,9X8,7</b>    | <b>CAP D.15,9X8,7</b>           |
| <b>26</b>    | <b>3-00371</b>  | <b>VALVOLA</b>                   | <b>VALVE</b>                    |
| <b>27</b>    | <b>3-01207</b>  | <b>VALVOLA</b>                   | <b>VALVE</b>                    |

# GRUPPO T.I. SYSTEM

## T.I. SYSTEM GROUP

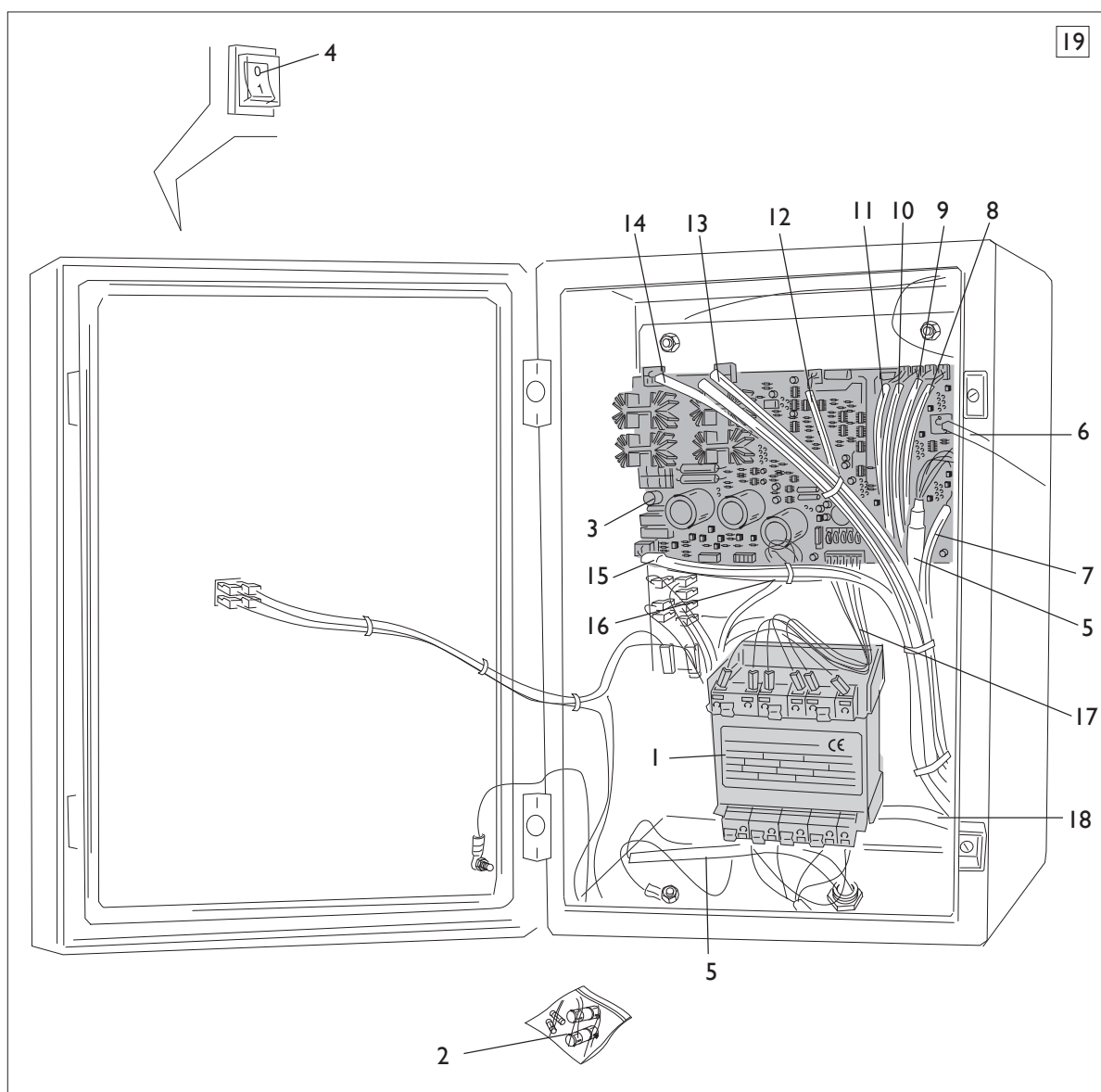


**[TORNA AL COMPLESSIVO](#)**  
**[RETURNS TO OVERALL](#)**

| Ref.      | Code            | Descrizione                       | Description                                  |
|-----------|-----------------|-----------------------------------|--|
| 1         | 362122          | TIRANTE                           | TIE ROD                                      |
| <b>2</b>  | <b>478247</b>   | <b>PERNO FORCELLA</b>             | <b>FORK PIN</b>                              |
| 3         | 3-00008         | RACCORDO-RESCA GI/2-T17           | RESCA FITTING GI/2 T17                       |
| 4         | 462124          | UGELLO                            | NOZZLE                                       |
| 5         | 442239          | RIDUZIONE M/F 3/8                 | FITTING M/F 3/8                              |
| 6         | 243203          | VALVOLA DI SPARO                  | VALVE FIRING                                 |
| <b>7</b>  | <b>3-00269</b>  | <b>RACCPN-RIDUZIONE-GI/4-I/8F</b> | <b>FITTING-GI/4-I/8F</b>                     |
| <b>8</b>  | <b>5-103624</b> | <b>TRECCIA TUBI PNEUMATICI</b>    | <b>BRAIDED PNEUMATIC TUBES</b>               |
| 9         | 5-101632        | MANIGLIA                          | HANDLE                                       |
| 10        | 2-94006         | VTCEI 1/2 M6X40                   | CIRCULAR SOCKET HEAD SCREW M6X40             |
| 11        | 3-01175         | VALVOLA                           | VALVE  |
| <b>12</b> | <b>2-00213</b>  | <b>RONDELLA D.10</b>              | <b>WASHER D.10</b>                           |
| <b>13</b> | <b>2-02184</b>  | <b>VTE M10X25</b>                 | <b>HEXAGON HEAD SCREW M10X25</b>             |
| 14        | 2-02047         | VTE M8X20                         | HEXAGON SOCKET HEAD SCREW M8X20              |
| <b>15</b> | <b>2-02247</b>  | <b>RONDELLA ELASTICA D.8,4X15</b> | <b>ELASTIC WASHER D.8,4X15</b>               |
| 16        | 2-03088         | MOLLA A TAZZA                     | WASHER                                       |
| 17        | 362121          | PIASTRA CENTRALE                  | CENTRAL PLATE                                |
| 18        | 2-03090         | VSTCCE M10                        | CIRCULAR SOCKET HEAD SCREW M10               |
| 19        | 2-03091         | VSTCCE M6                         | CIRCULAR SOCKET HEAD SCREW M6                |
| 20        | 2-01257         | DADO ES.N.A. M6                   | NORMAL AUTOLOCKING HEXAGON NUT M6            |
| 21        | 2-01019         | DADO ES.N.A. M10                  | NORMAL AUTOLOCKING HEXAGON NUT M10           |
| 22        | 2-00214         | RONDELLA D.12                     | WASHER D.12                                  |
| 23        | 362194          | FORCELLA ATTACCO PIASTRA          | FORK   |
| 24        | 462117          | RONDELLA D.12X24X0,5              | WASHER D.12X24X0,5                           |
| 25        | 2-00211         | RONDELLA D.6                      | WASHER D.6                                   |
| 26        | 262127          | BRACCIO DX                        | ARM DX                                       |
| 27        | 362123          | PIASTRA FISSAGGIO UGELLO          | NOZZLE PLATE                                 |
| 28        | 2-02037         | VTCEI M5X14                       | CIRCULAR SOCKET HEAD SCREW M5X14             |
| 29        | 2-03121         | VATCCIC D4X12                     | SCREW TAPPING HEAD CUTTING CIRC. CROSS M4X12 |
| 30        | 262128          | BRACCIO SX                        | ARM SX                                       |
| <b>31</b> | <b>3020962</b>  | <b>STAFFA PROTEZIONE VALVOLA</b>  | <b>VALVE BRACKET</b>                         |
| 32        | 3-00356         | VALVOLA <b>CE</b>                 | VALVE <b>CE</b>                              |
| 32        | 3-00278         | VALVOLA <b>ASME</b>               | VALVE <b>ASME</b>                            |
| 33        | 262215          | SERBATOIO <b>CE</b>               | TANK <b>CE</b>                               |
| 33        | 5-100552        | SERBATOIO <b>ASME</b>             | TANK <b>ASME</b>                             |
| 34        | 2-01020         | DADO ES.N.A. M8                   | NORMAL AUTOLOCKING HEXAGON NUT M8            |
| 35        | 2-00212         | RONDELLA D.8                      | WASHER D.8                                   |
| 36        | 2-03065         | PERNO D.8X22X18,5                 | PIN D.8X22X18,5                              |
| <b>37</b> | <b>3-00515</b>  | <b>RACCPN-ANELLO-GI/8-T6</b>      | <b>FITTING-GI/8-T6</b>                       |
| <b>38</b> | <b>3-00514</b>  | <b>RACCPN-ANELLO-GI/8-T4</b>      | <b>FITTING-GI/8-T4</b>                       |
| <b>39</b> | <b>3-00075</b>  | <b>VITE FORATA DOPPIA GI/8</b>    | <b>SCREW TWO HOLES GI/8</b>                  |
| <b>40</b> | <b>2-01979</b>  | <b>DADO ES.A. M6</b>              | <b>AUTOLOCKING HEX. NUT M6</b>               |
| 41        | 462140          | MOLLA GAS                         | GAS SPRING                                   |
| 42        | 4-101815        | ATTACCO T.I.                      | T.I. PLATE                                   |
| 43        | 262134          | ASTA                              | BAR  |
| 44        | 4-101825        | SNODO ASTA                        | JOINT  |
| 45        | 2-91715         | VTE M8X12                         | HEXAGON SOCKET HEAD SCREW M8X12              |
| 46        | 2-91680         | DADO ES.B. M8                     | LOW HEXAGON NUT M8                           |
| 47        | 2-01276         | DADO ES.B.A. M12                  | LOW AUTOLOCKING HEXAGON NUT M12              |
| 48        | 2-03089         | TERMINALE FILETTATO               | THREADED TERMINAL                            |
| 49        | 2-91640         | DADO ES.B. M12                    | LOW HEXAGON NUT M12                          |
| 50        | 435055          | COPIGLIA D.2X40                   | PIN D.2X40                                   |

# GRUPPO IMPIANTO ELETTRICO

## ELECTRIC PANEL GROUP



[TORNA AL COMPLESSIVO](#)  
[RETURNS TO OVERALL](#)

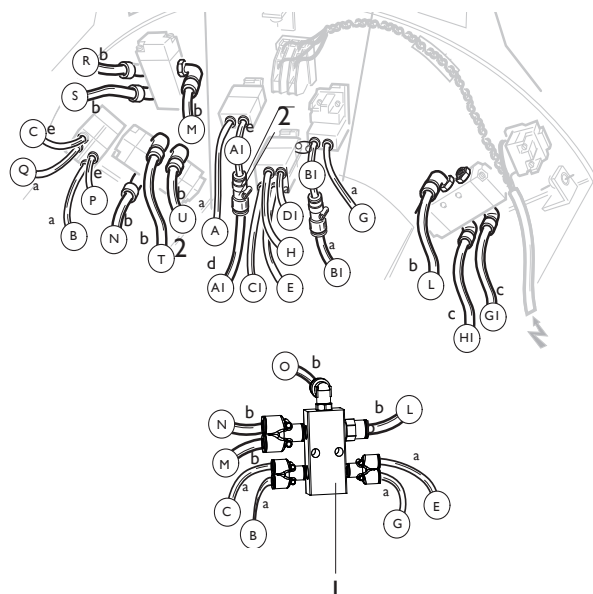


| Rif.<br>Ref. | Codice<br>Code | Descrizione                       | Description                         |
|--------------|----------------|-----------------------------------|-------------------------------------|
| 1            | 461829         | TRASFORMATORE                     | TRANSFORMER                         |
| <b>2</b>     | <b>263565</b>  | <b>KIT FUSIBILI</b>               | <b>FUSES KIT</b>                    |
| 3            | 4-101919       | SK P2K                            | PC BOARD P2K                        |
| 4            | 433848         | INTERRUTTORE                      | SWITCH                              |
| 4            | 5-100654       | CAVO RETE                         | POWER CABLE                         |
| 5            | 5-100665       | CAVO COLL. SK - CONSOLLE          | PC BOARD CABLE - CONSOLE            |
| 6            | 5-100664       | CAVO COLL.SK - ENCODER ATTUATORE  | PC BOARD CABLE - ACTUATOR ENCODER   |
| 7            | 5-100671       | CAVO COLL. SK - DISPLAY           | PC BOARD CABLE - DISPLAY            |
| 8            | 5-100666       | CAVO COLL. SK - MICRO SOLLEVATORE | PC BOARD CABLE - MICRO LIFTER       |
| 9            | 5-100668       | CAVO COLL.SK - ASSE Y DOWN        | PC BOARD CABLE - Y AXIS DOWN        |
| 10           | 5-100667       | CAVO COLL.SK - ASSE Y UP          | PC BOARD CABLE - Y AXIS UP          |
| 11           | 5-100669       | CAVO COLL. SK - MICRO AZZERAMENTO | PC BOARD CABLE - MICRO RESET        |
| 12           | 5-100722       | CAVO ROTAZIONE AUTOCENTRANTE      | CABLE TURNTABLE ROTATION            |
| 13           | 5-100663       | CAVO COLL.SK - MOTORE ASSE Y      | PC BOARD CABLE - ASSE Y MOTOR       |
| 14           | 5-100662       | CAVO COLL.SK - ATTUATORE ASSE X   | PC BOARD CABLE - X AXIS ACTUATOR    |
| 15           | 5-100689       | CAVO COLL. SK - BRAKEY            | PC BOARD CABLE - BRAKEY             |
| 16           | 5-100660       | CAVO COLL.SK - EV1/EV2            | PC BOARD CABLE - EV1/EV2            |
| 17           | 5-101471       | CAVO SECONDARIO TRASFORMATORE     | TRANSFORMER CABLE                   |
| 18           | 5-105010       | CAVO ALIM.MOTOINV - SK            | MOTOINVERTER POWER CABLE - PC BOARD |
| 19           | 5-100726       | IMPIANTO ELETTRICO COMPLETO       | ELECTRIC PANEL ASSEMBLY             |

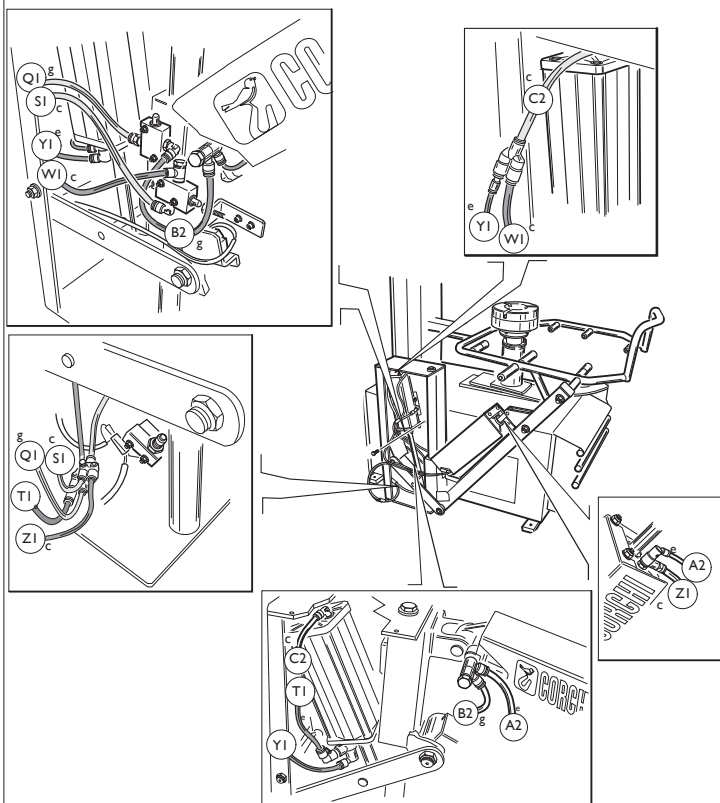
# IMPIANTO PNEUMATICO

## PNEUMATIC SYSTEM

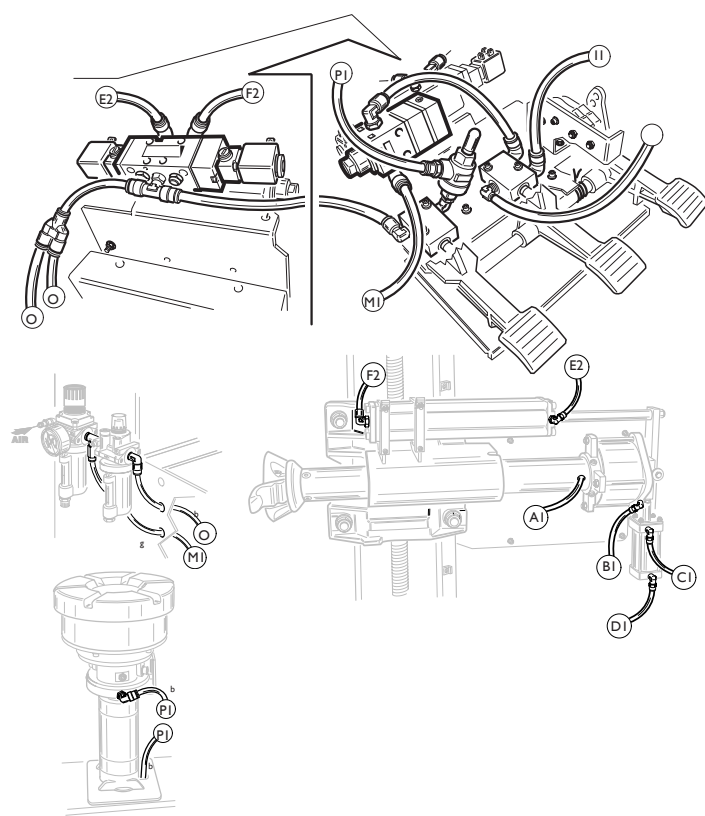
### CONSOLE COMANDI COMAND CONSOLE



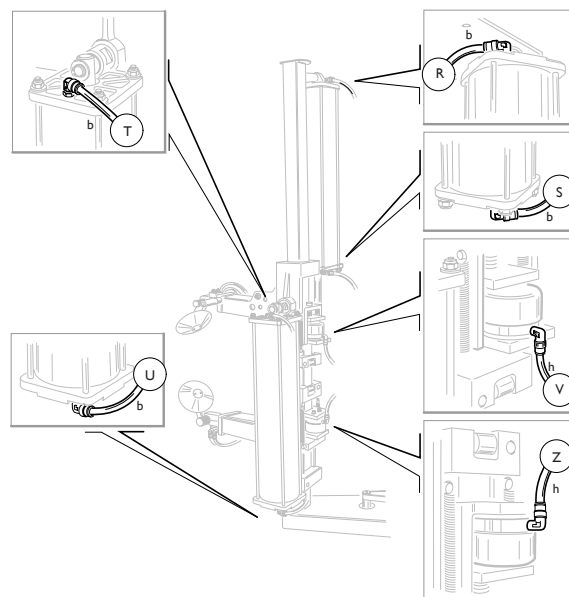
### SOLLEVATORE LIFTER



### PEDALIERA PEDAL



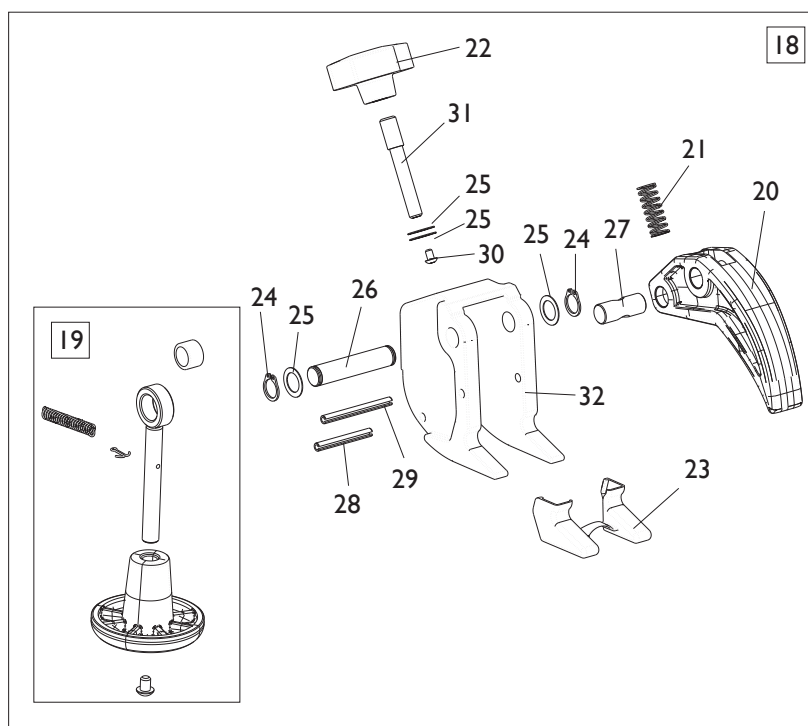
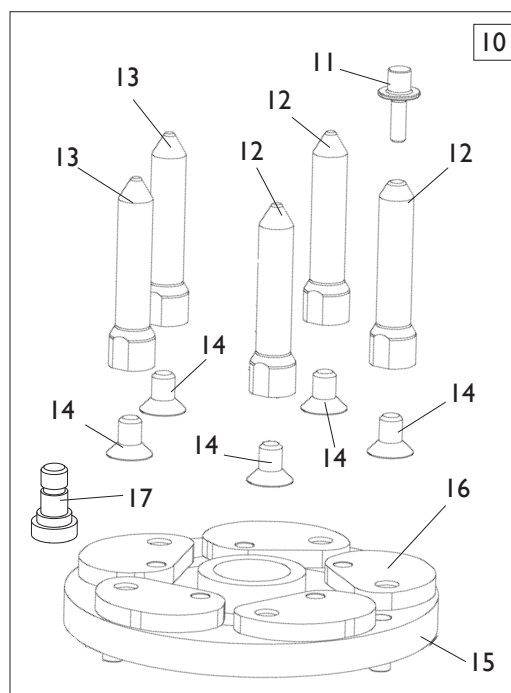
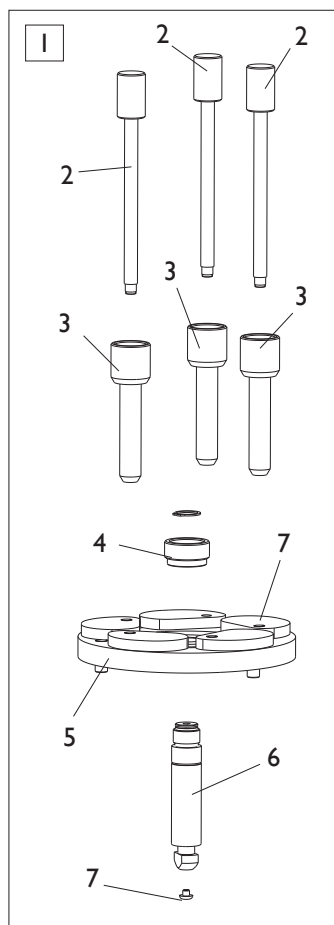
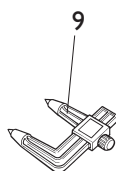
### STALLONATORE BEAD BREAKER



**TORNA AL COMPLESSIVO  
RETURNS TO OVERALL**

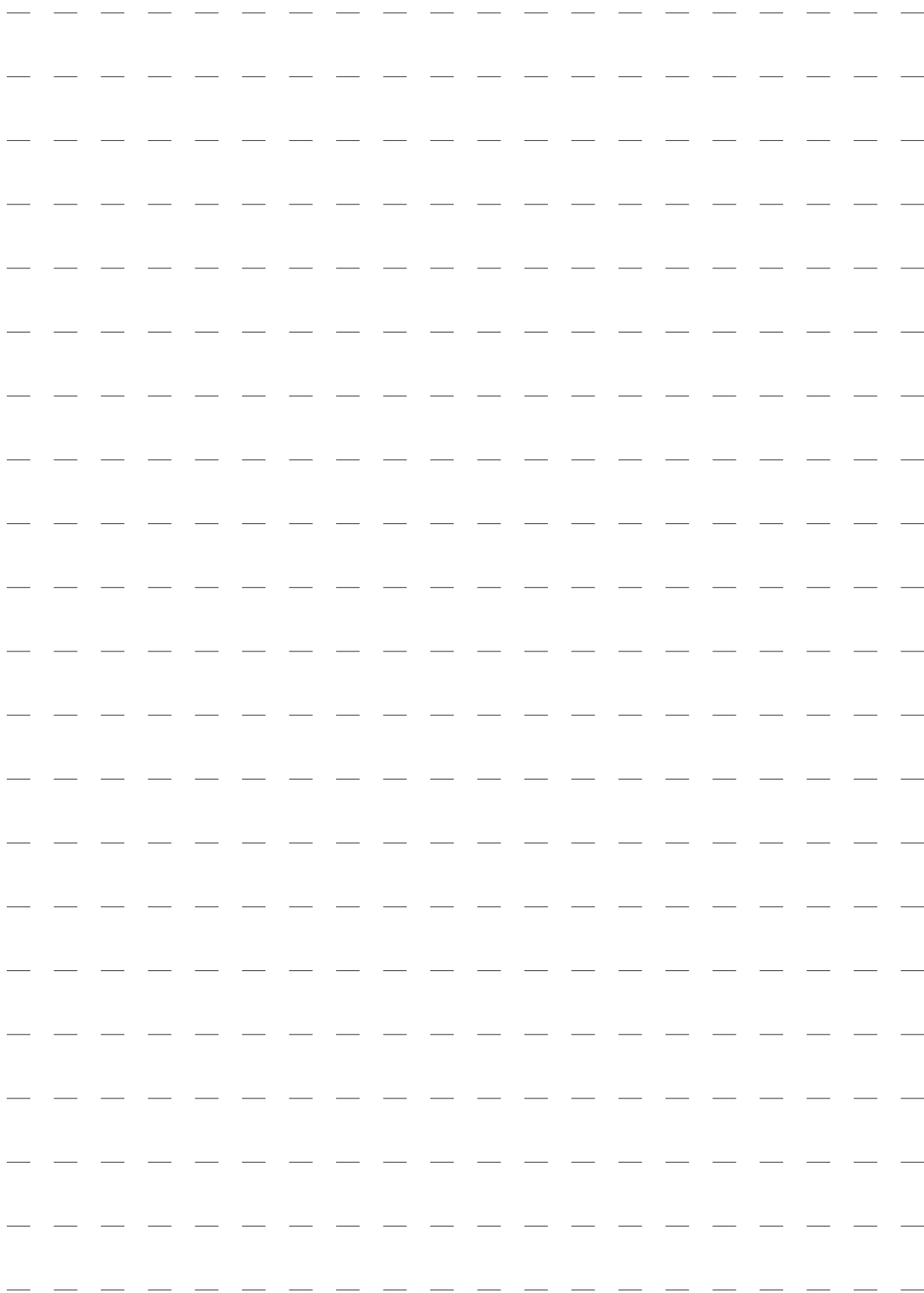
| Rif.<br>Ref. | Codice<br>Code | Descrizione            | Description           |
|--------------|----------------|------------------------|-----------------------|
| <b>A</b>     | I-04567        | TUBO AZZURRO D.4X1     | BLUE PIPE D.4X1       |
| <b>B</b>     | I-04333        | TUBO NERO D.8X1        | BLACK PIPE D.8X1      |
| <b>C</b>     | I-04036        | TUBO GIALLO D.6X1      | YELLOW PIPE D.6X1     |
| <b>D</b>     | I-04283        | TUBO NERO D.6X1        | BLACK PIPE D.6X1      |
| <b>E</b>     | I-04035        | TUBO NERO D.4X1        | BLACK PIPE D.4X1      |
| <b>F</b>     | I-04002        | TUBO TRASPARENTE D.6X1 | TRASPARENT PIPE D.6X1 |
| <b>G</b>     | I-04001        | TUBO ROSSO D.6X1       | RED PIPE D.6X1        |
| <b>H</b>     | I-04551        | TUBO VERDE D.4X1       | GREEN PIPE D.4X1      |
| <b>I</b>     | I-04003        | TUBO BLU D.6X1         | BLUE PIPE D.6X1       |
| 1            | 5-106241       | DISTRIBUTORE           | VALVE                 |
| 2            | 3-01174        | RACCPN-D-T4-T6         | D-FITTING-T4-T6       |

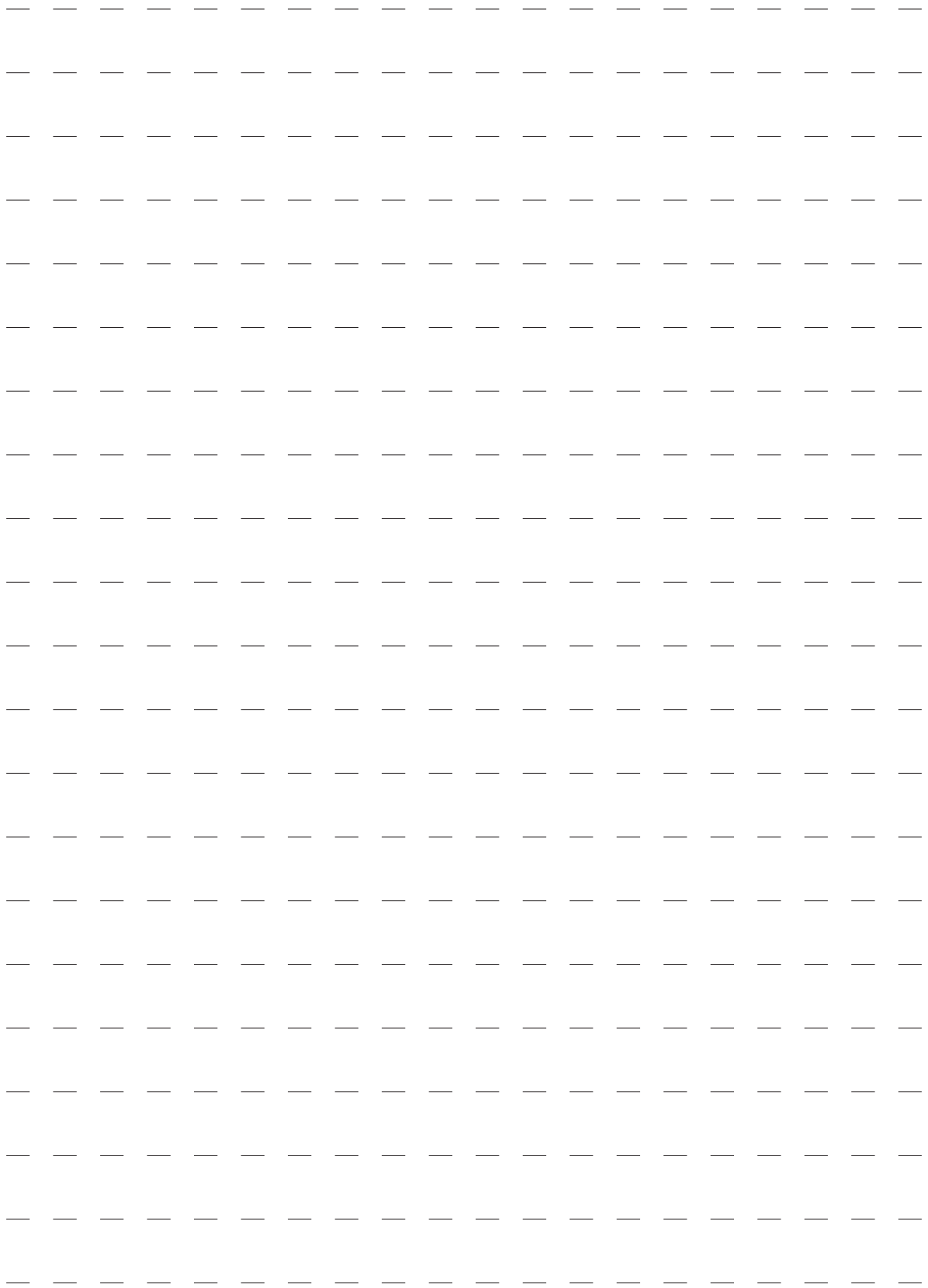
# ACCESSORI ACCESSORIES



[TORNA AL COMPLESSIVO](#)  
[RETURNS TO OVERALL](#)

| Rif.<br>Ref. | Codice<br>Code | Descrizione                    | Description                    |
|--------------|----------------|--------------------------------|--------------------------------|
| 1            | 8-11100038     | KIT RUOTE CIECHE               | WHEEL KIT BLIND                |
| 2            | 361647         | VITE FISSAGGIO CERCHI CIECHI   | FIXING BOLT RIMS BLIND         |
| 3            | 361648         | GHIERA FISSAGGIO CERCHI CIECHI | FITTING NUT RIMS BLIND         |
| 4            | 4-103766       | GHIERA SERRAGGIO FLANGIA       | FITTING NUT                    |
| 5            | 5-102422       | FLANGIA UNIVERSALE 6 PETALI    | UNIVERSAL FLANGE 6 PETALS      |
| 6            | 4-102372       | BARRA BLOCC. FLANGE            | BAR                            |
| 7            | 461560         | PROTEZIONE                     | PROTECTION                     |
| 8            | 4-107023       | BIELLA                         | PETAL                          |
| 9            | 2008157        | RILEVATORE FORI                | DETECTOR HOLES                 |
| 10           | 8-11100039     | KIT RUOTE ROVESCE              | REVERSE RIMS KIT               |
| 11           | 4-102377       | GHIERA DI SERRAGGIO            | FITTING NUT                    |
| 12           | 5-102721       | COLONNETTA CON SERRAGGIO       | COLUMN WITH LOCKING            |
| 13           | 5-102720       | COLONNETTA                     | COLUMN                         |
| 14           | 2-71769        | VTSPEI M12X20                  | CSK SCREW FLAT SOCKET M12X20   |
| 15           | 5-102421       | FLANGIA CERCHI ROVESCIO        | FLANGE REVERSE RIMS            |
| 16           | 4-107024       | BIELLA                         | PETAL                          |
| 17           | 4-101250       | VITE FISSAGGIO BIELLA          | SPECIAL SCREW                  |
| 18           | 8-11100120     | MORSETTO BASCULANTE            | TILTING CLAMP                  |
| 19           | 5-101642       | DISCO DI SPINTA                | DISK                           |
| 20           | 4-104051       | DITO                           | TOOL                           |
| 21           | 3-01760        | MOLLA D.11,5X30X1,5            | SPRING D.11,5X30X1,5           |
| 22           | 3-01715        | VOLANTINO                      | HANDLE                         |
| 23           | 8-11100126     | KIT 6 PROTEZIONI               | 6 PROTECTION KIT               |
| 24           | 2-00025        | ANELLO D.12                    | SEEGER D.12                    |
| 25           | 315274         | RONDELLA D.12X18X0,5           | WASHER D.12X18X0,5             |
| 26           | 4-104271       | PERNO                          | PIN                            |
| 27           | 4-104258       | PERNO FORATO PICCOLO           | SMALL PIN HOLES                |
| 28           | 2-71566        | SPINA D.5X40                   | PLUG D.5X40                    |
| 29           | 2-02219        | SPINA D.5X50                   | PLUG D.5X50                    |
| 30           | 2-03039        | VTBEI M4X6                     | ROUNDED HEAD SCREW SOCKET M4X6 |
| 31           | 4-104259       | PERNO DUE FILETTI              | PIN TWO THREADS                |
| 32           | 4-104235       | CORPO MORSETTO                 | BODY                           |







Via per Carpi, n°9 - 42015 Correggio (RE) ITALY  
Tel. ++39 0522 639111 - Fax ++39 0522 639150  
[www.corgchi.com](http://www.corgchi.com) - [info@corgchi.com](mailto:info@corgchi.com)

Code 4-I04538K



Il disegno è realizzato con tutti i particolari ma solo quelli codificati sono forniti come ricambi. L'Azienda si riserva la facoltà di apportare modifiche senza preavviso.

Production date : 01 / 2017

The drawing shows all parts but only the coded parts are supplied as spares. The Company reserves the right to make modifications without prior notice.