

PEZZI DI RICAMBIO SPARE PARTS LIST

SWING ARM 10" - 22"

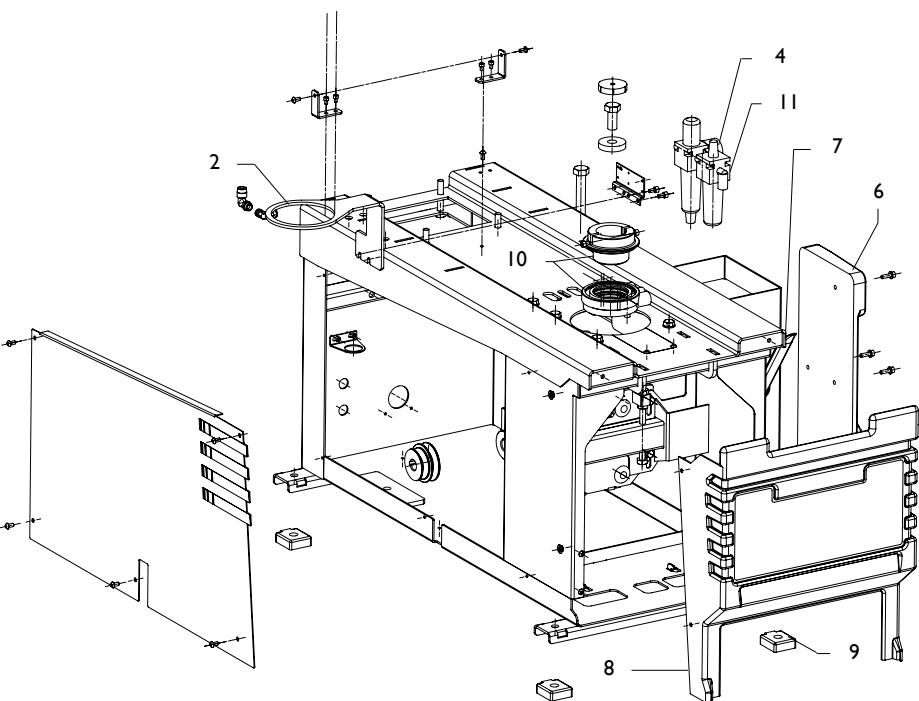
Code

4-109928A

Production from

07 / 2012

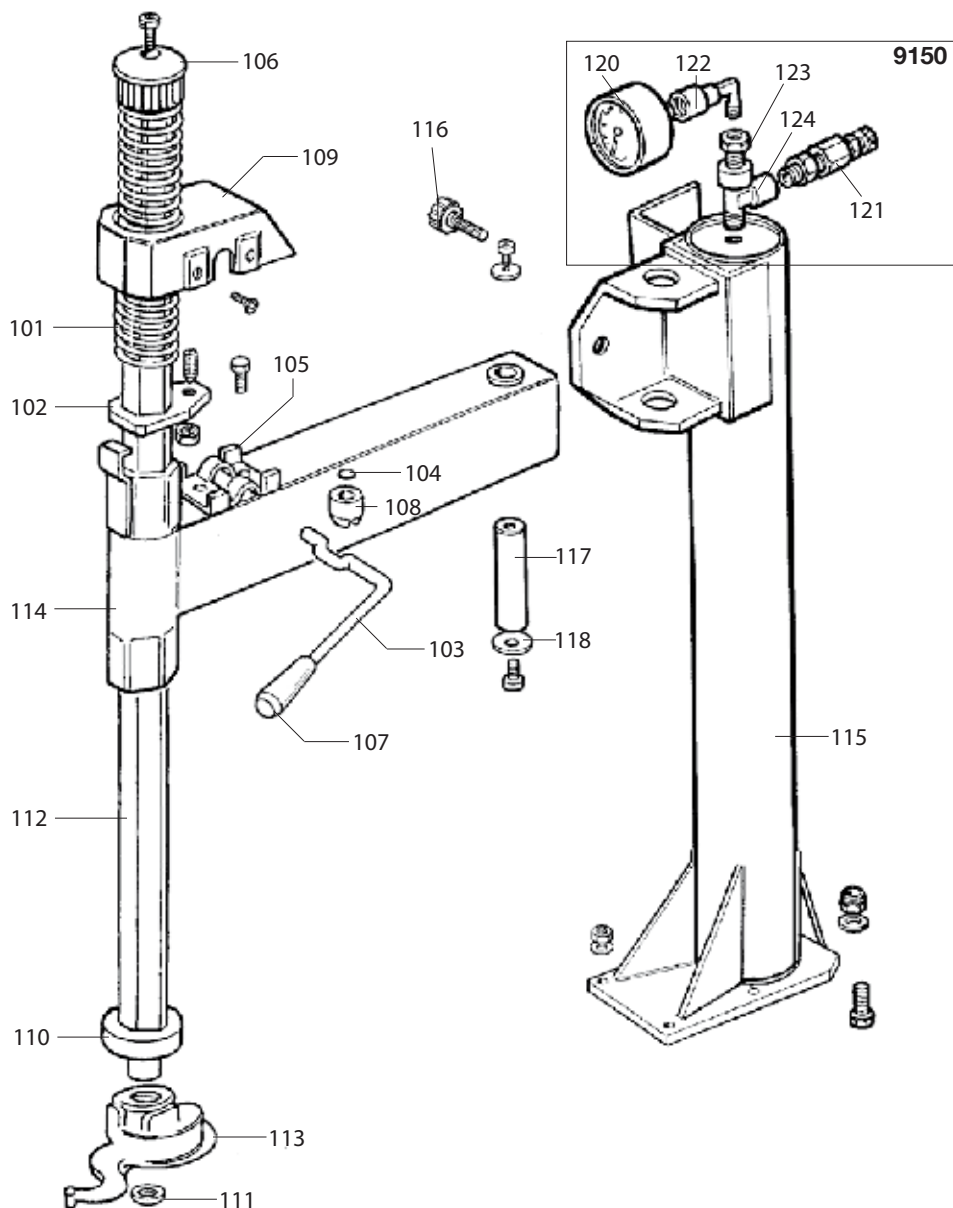
TAV.A	Complessivo	07/12
-------	-------------	-------



TAV.A	Complessivo	07/12
-------	-------------	-------

0002	358135	PORTAGRASSO	GREASE SUPPORT
0004	3-00488	MANOMETRO	PRESSURE GAUGE
0006	4-103556	APPOGGIO CERCHIO	RUBBER PAD
0007	444288	LEVA ALZATALLONI	LEVER
0008	4-102221	CARTER PEDALIERA	CASING
0009	422019	PIEDE	FOOT
0010	241841	RACCORDO GIREVOLE TI	DISTRIBUTOR
0011	5-191166	FILTRO	FILTER

TAV.B	Testata	10/10
-------	---------	-------

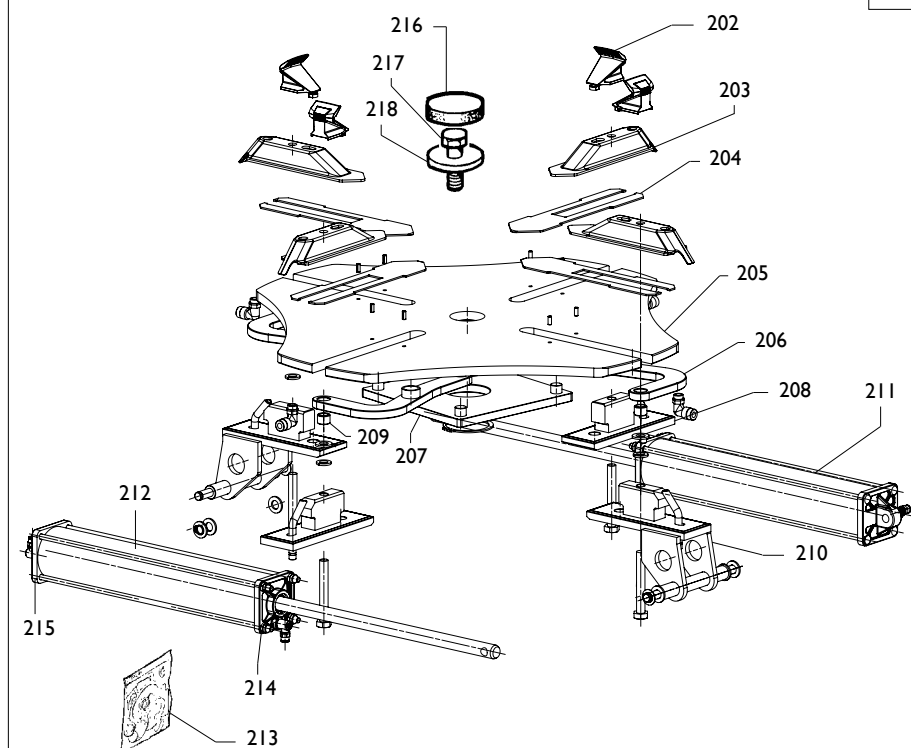


TAV.B	Testata	10/10
-------	---------	-------

0101	4-100230	MOLLA	SPRING
0102	340278	PIATTO	PLATE
0103	440279	LEVA	LEVER
0104	440280	PIASTRINA	PLATE
0105	440281	PIASTRINA eccentrico	PLATE
0106	423907	POMOLO	KNOB
0107	441580	MANOPOLA	KNOB
0108	440284	NOTTOLINO	PAWL
0109	440285	CARTER	CASING
0110	428681	ANELLO	RING
0111	350194	RONDELLA	WASHER
0112	343105	BRACCIO	ARM
0113	257483	TORRETTA	M/D HEAD
0114	4-111171	BRACCIO	ARM
0115	4-106575	PALO	SHAFT
0116	441580	MANOPOLA	KNOB
0117	4-112856	PERNO	PIN
0118	318216	RONDELLA	WASHER

9150	241608	GRUPPO MANOMETRO	ASSEMBLY
0120	3-00488	MANOMETRO	PRESSURE GAUGE
0121	3-00356	VALVOLA	VALVE
0122	3-00138	RACCORDO	CONNECTOR
0123	3-00271	NIPPLO	CONNECTION
0124	3-00131	RACCORDO	CONNECTOR

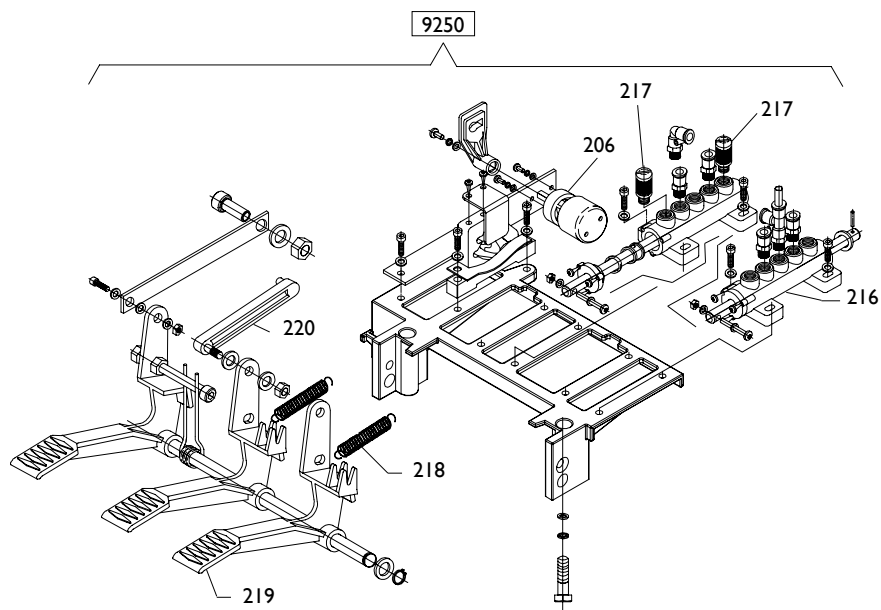
9250



TAV.C	Gruppo Autocentrante	10/10
-------	----------------------	-------

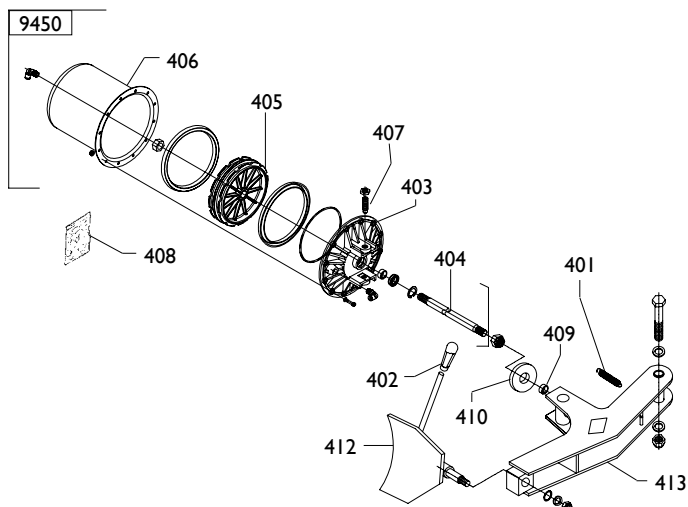
9250	5-100101	AUTOCENTRANTE 10-22	CUCK
	5-100183	AUTOCENTRANTE 10-22 TI	TI CUCK
0202	3008225	UNGHIA	JAW
0203	4-101872	SCORREVOLE	SLIDE
0203	4-101871	SCORREVOLE TI	TI SLIDE
0204	4-105367	SLITTA	SLIDE
0205	4-105731	AUTOCENTRNATE	CUCK
0206	4-105371	BIELLA	ROD
0207	4-105471	FLANGIA	FLANGE
0208	4-105019	APPOGGIO TRAINATO	SUPPORT
0208	4-100077	APPOGGIO TRAINATO TI	TI SUPPORT
0209	4-105320	DISTANZIALE	SPACER
0210	4-105332	APPOGGIO TRAINANTE	SUPPORT
0210	4-106148	APPOGGIO TRAINANTE TI	TI SUPPORT
0211	5-100121	CILINDRO DX	CYLINDER RIGHT
0212	5-100106	CILINDRO SX	CYLINDER LEFT
0213	238548	KIT GUARN.CIL.AUTOC.	GASKET KIT
0214	328572	FLANGIA ANT.	FLANGE
0215	328573	FLANGIA POST.	FLANGE
0216	426514	TAPPO	PLUG
0217	2-01216	VITE	SCREW
0218	323363	RONDELLA	WASHER

TAV.D	Pedaliere	10/10
-------	-----------	-------



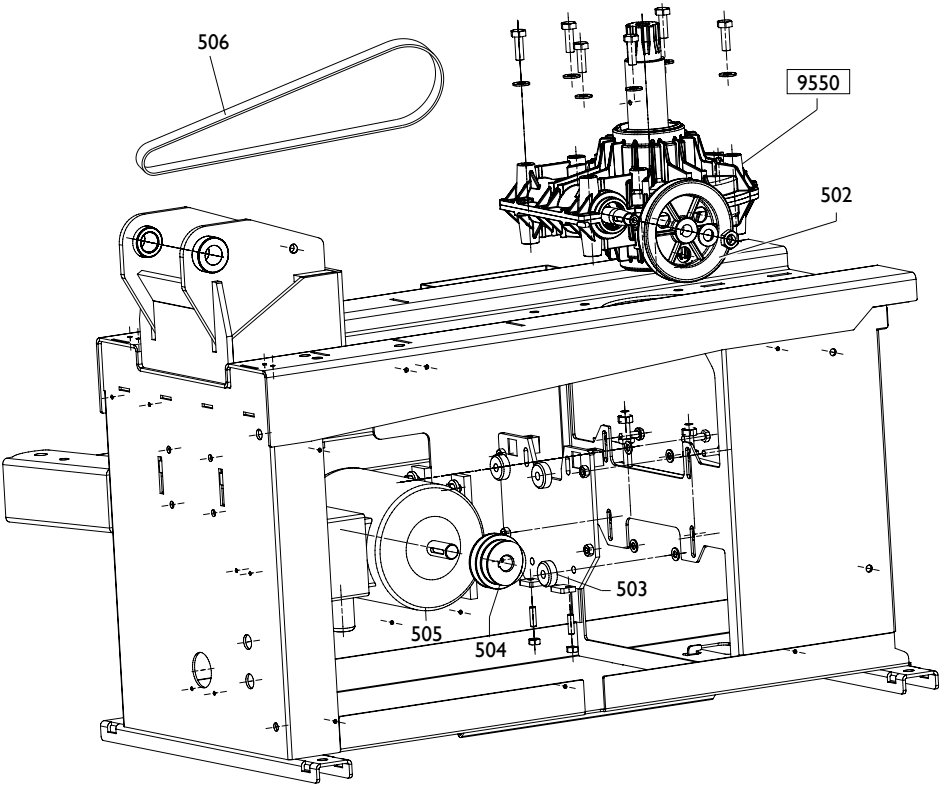
9250	5-101363	PEDALIERA	CONTROL PEDAL
0206	5-102742	INVERTITORE	REVERSER
0216	5-103892	VALVOLA	VALVE BODY
0217	3-00183	SILENZIATORE	SILENCER
0218	4-112555	MOLLA	SPRING
0219	4-112636	PEALE	PEDAL
0220	4-112859	BIELLA	ROD

TAV.E	Cilindro stallonatore	07/12
-------	-----------------------	-------



9450	5-101089	CILINDRO STALLONATORE	CYLINDER
0403	351905	FLANGIA ANT.	FLANGE
0404	4-104405	STELO	ROD
0405	337848	PISTONE	PISTON
0406	4-104500	CAMICIA	LINER
0401	4-112430	MOLLABRACCIO STALL.	SPRING
0402	425219	MANOPOLA	HANDLE
0407	431864	VITE	SCREW
0408	238212	KIT GUARNIZIONI	GASKETS KIT
0409	425003	ANELLO	RING
0410	35009784	RONDELA IN GOMMA	WASHER
0412	4-109824	PALETTA	BEAD BREAKER
0413	4-115375	BRACCIO STALLONATORE	ARM

TAV.F	Gruppo motoriduttore	10/10
-------	----------------------	-------

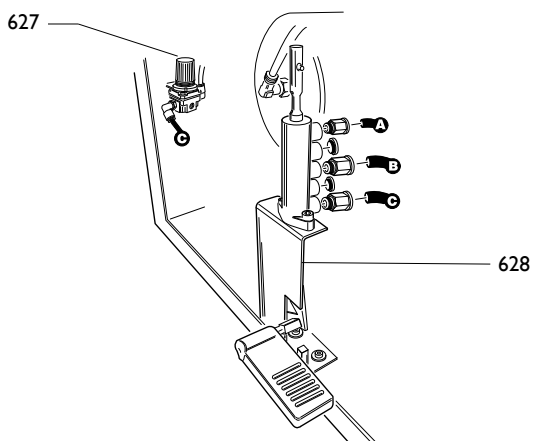
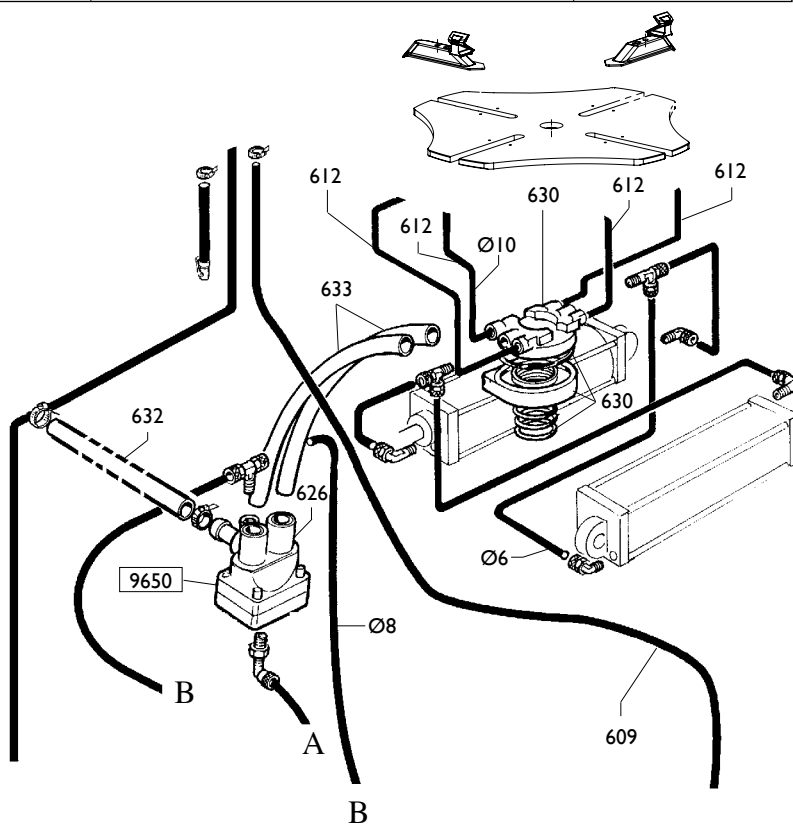


TAV.F	Gruppo motoriduttore	10/10
-------	----------------------	-------

9550	5-102647	RIDUTTORE+PULEGGIA	GEAR BOX +PULLEY
0502	314344	PULEGGIA	PULLEY

0503	4-108050	ANTIVIBRANTE	ANTISHOCK
0504	325274	PULEGGIA MOTORE 60HZ	60HZ MOTOR PULLEY
0504	331067	PULEGGIA MOTORE 50HZ	50HZ MOTOR PULLEY
0505	4-104634	MOTORE 230/1/50HZ	MOTOR
0505	4-112969	MOTORE 115/1/60HZ	MOTOR
0505	422013	MOTORE 230-400/3/50-60HZ	MOTOR
0505	4-110900	MOTORE 230/1/60HZ	MOTOR
0506	3-00554	CINGHIA 50/60 HZ	BELT
0506	3-00540	CINGHIA	BELT

TAV.G	Impianto pneumatico TI	10/10
-------	------------------------	-------

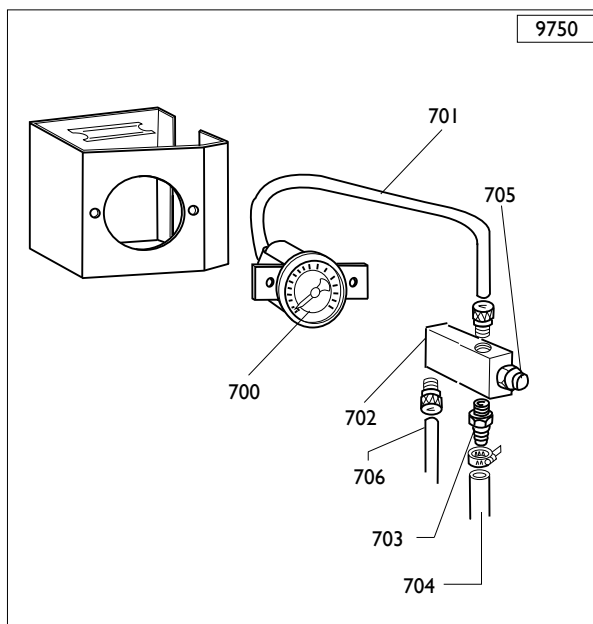


TAV.G	Impianto pneumatico TI	10/10
-------	------------------------	-------

9650 0626	5-101347 3-00403	VALVOLA CARTUCCE	VALVE CARTRIDGE
--------------	---------------------	---------------------	--------------------

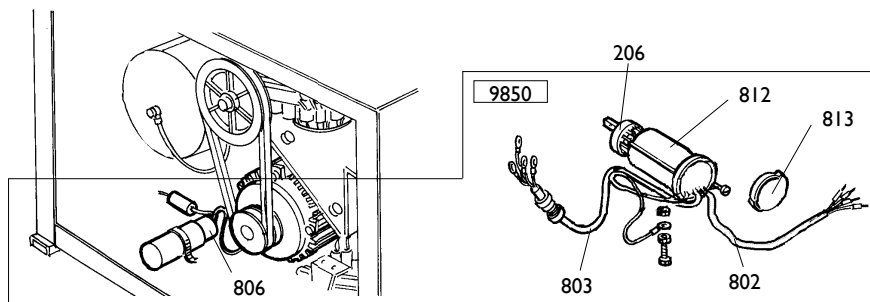
0609	339425	TUBO L.1600mm	PIPE	
0612	353999	TUBO	PIPE	ROHR TUYAU
0630	241841	RACCORDO	CONNECTOR	ANSCHLUSS RACCORD
0632	387776	TUBO	PIPE	ROHR TUYAU
0633	4-103544	TUBO	PIPE	ROHR TUYAU
0627	3-00516	REGOLATORE DI PRESSIONE	PRESSURE REGULATOR	
0628	5-101440	GR,GONFIAGGIO PEDALE	ASSEMBLY	
Ø6	1-01684	TUBO	PIPE	
Ø8	1-01683	TUBO	PIPE	

TAV.H	Manometro	10/10
-------	-----------	-------



9750	5-101190	SCATOLA - BAR PSI	BOX - BAR PSI
0700	3-00489	MANOMETRO	PRESSURE GAUGE
0701	325035	TUBO	PIPE
0702	4-109936	BLOCCHETTO	BLOCK
0703	3-00007	RACCORDO	CONNECTOR
0704	339425	TUBO	PIPE
0705	235463	VALVOLA	VALVE
0706	323042	TUBO	PIPE

TAV.I	Impianto elettrico	10/10
-------	--------------------	-------



9850	5-190350	IMP.ELETTR. 3PH	ELEC. SYSTEM
0802	235518	CAVO RETE	CABLE
0803	225390	CAVO MOTORE	CABLE
0812	432065	PROTEZIONE	SHIELD
0813	430991	COPERCHIO	LID
9850	5-190348	IMP.ELETTR. 230V 1PH	ELEC. SYSTEM
9850	5-190349	IMP.ELETTR. 110V 1PH	ELEC.SYSTEM
0802	258746	CAVO RETE	CABLE
0803	5-101127	CAVO MOTORE	CABLE
0812	432065	PROTEZIONE	SHIELD
0813	430991	COPERCHIO	LID
0806	4-112631	CONDENSATORE 60MicF(450V) per mot. 220V	RUNNING CAPACITOR
	4-112632	CONDENSATORE 80MicF(250V) per mot. 110V	RUNNING CAPACITOR

0206	5-102742	INVERTITORE	REVERSER
------	----------	-------------	----------

cod.4-I09928A - 07_2012

Il disegno è realizzato con tutti i particolari ma solo quelli codificati sono forniti come ricambi. L'Azienda si riserva la facoltà di apportare modifiche senza preavviso.

The drawing shows all parts but only the coded parts are supplied as spares. The Company reserves the right to make modifications without prior notice.