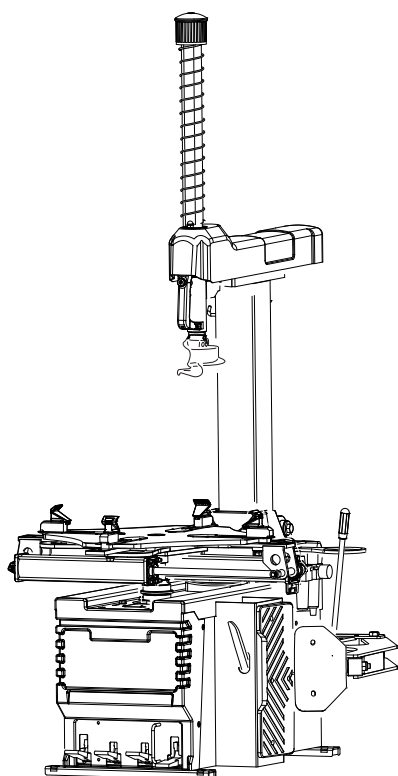


TILTING BACK

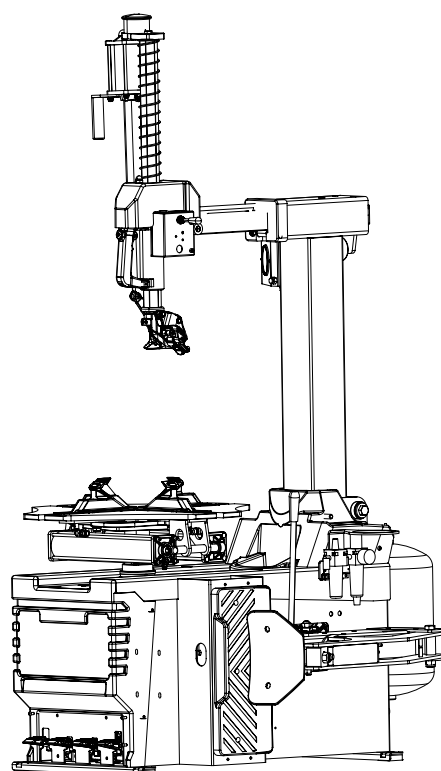
TILTING BACK LL

Pezzi di ricambio / Spare parts list

TILTING BACK



TILTING BACK LL



Code: 4-109927C

Production date: 09 / 2014

I

Sul presente documento sono stati evidenziati con colore grigio i ricambi consigliati e indicati in grassetto i codici che sono variati rispetto a quelli riportati nella precedente versione del 07/12

EN

In this document, the recommended spare parts have been highlighted in gray, while in bold you find those codes which are different if compared with the previous version dated 07/12

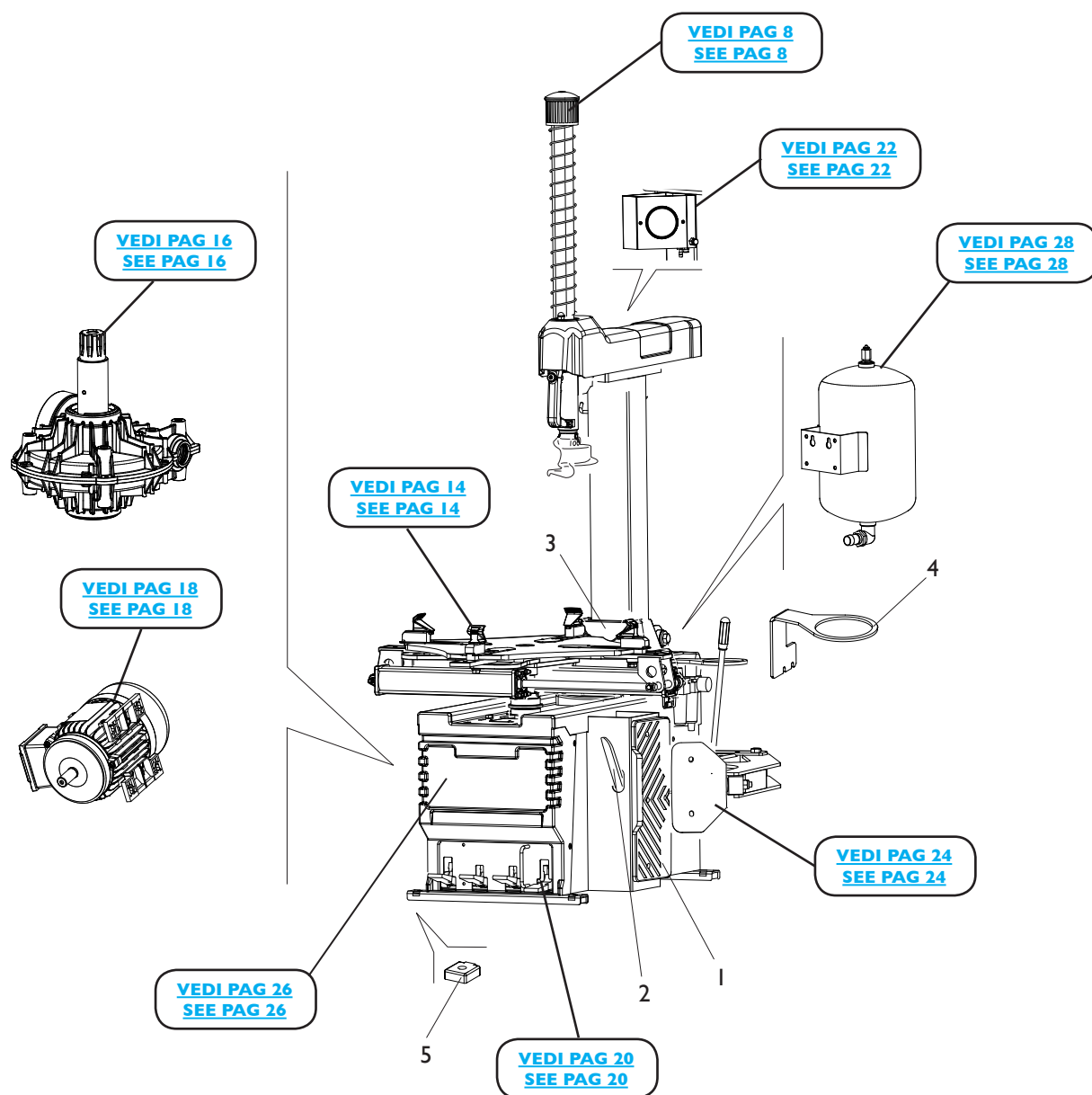
DE

Im vorliegenden Dokument wurden die empfohlenen Ersatzteile in grauer Farbe hervorgehoben; die Teilenummern in Fettdruck haben sich beziehend auf die vorherige Version vom 07/12 geändert.

FR

Dans ce document, les pièces de rechange préconisées sont soulignées en gris, tandis que les références différentes par rapport à la version précédente du 07/12 sont en gras

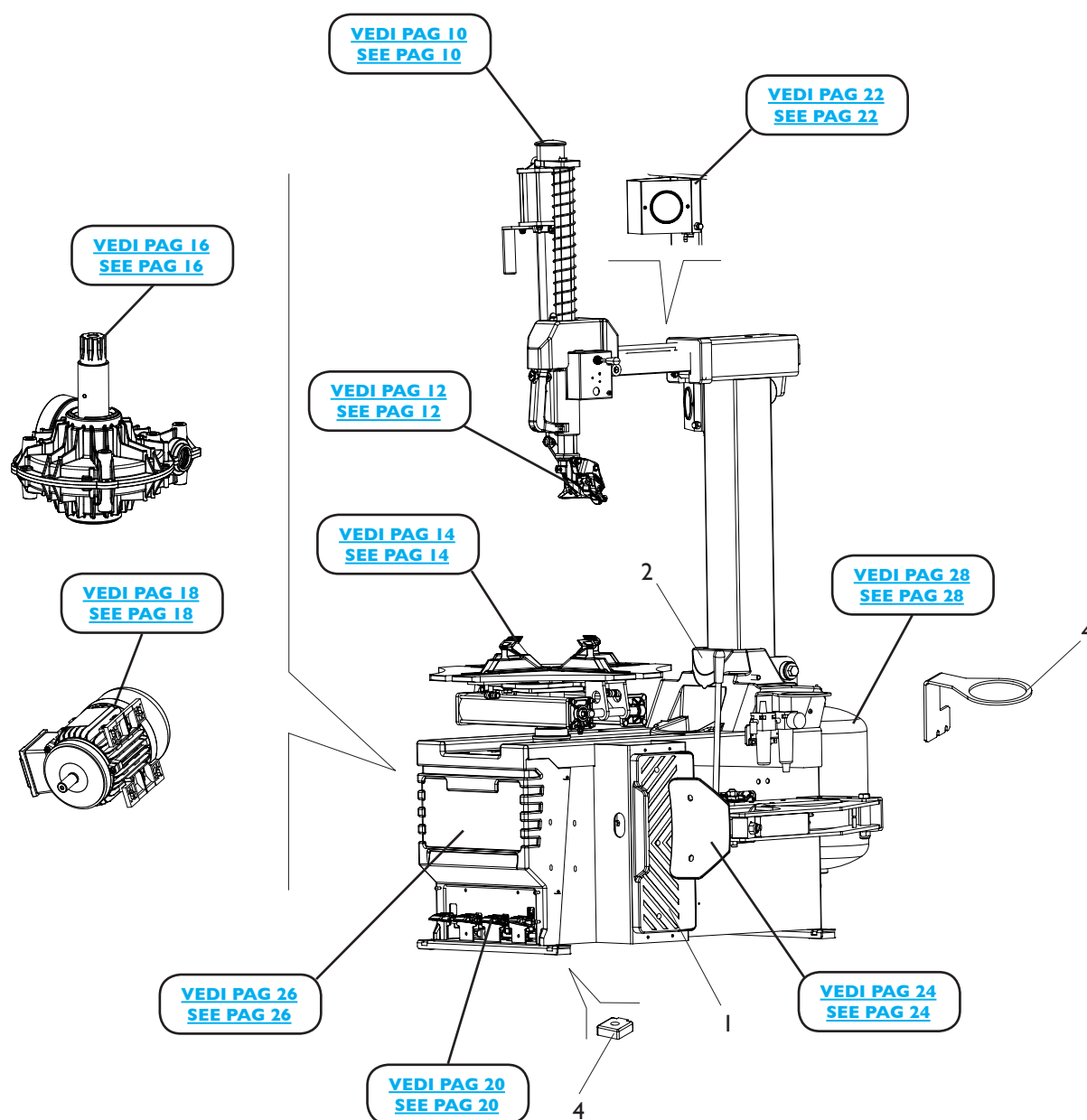
COMPLESSIVO TILTING BACK TILTING BACK OVERALL



Rif. Ref.	Codice Code	Descrizione	Description
1	4-103556	APPOGGIO CERCHIO	RIM SUPPORT
2	444288	LEVA	LEVER
3	4-103555	PROTEZIONE PALO	ARM COVER
4	358135	PORTAGRASSO	GREASER
5	422019	PIEDE	FOOT

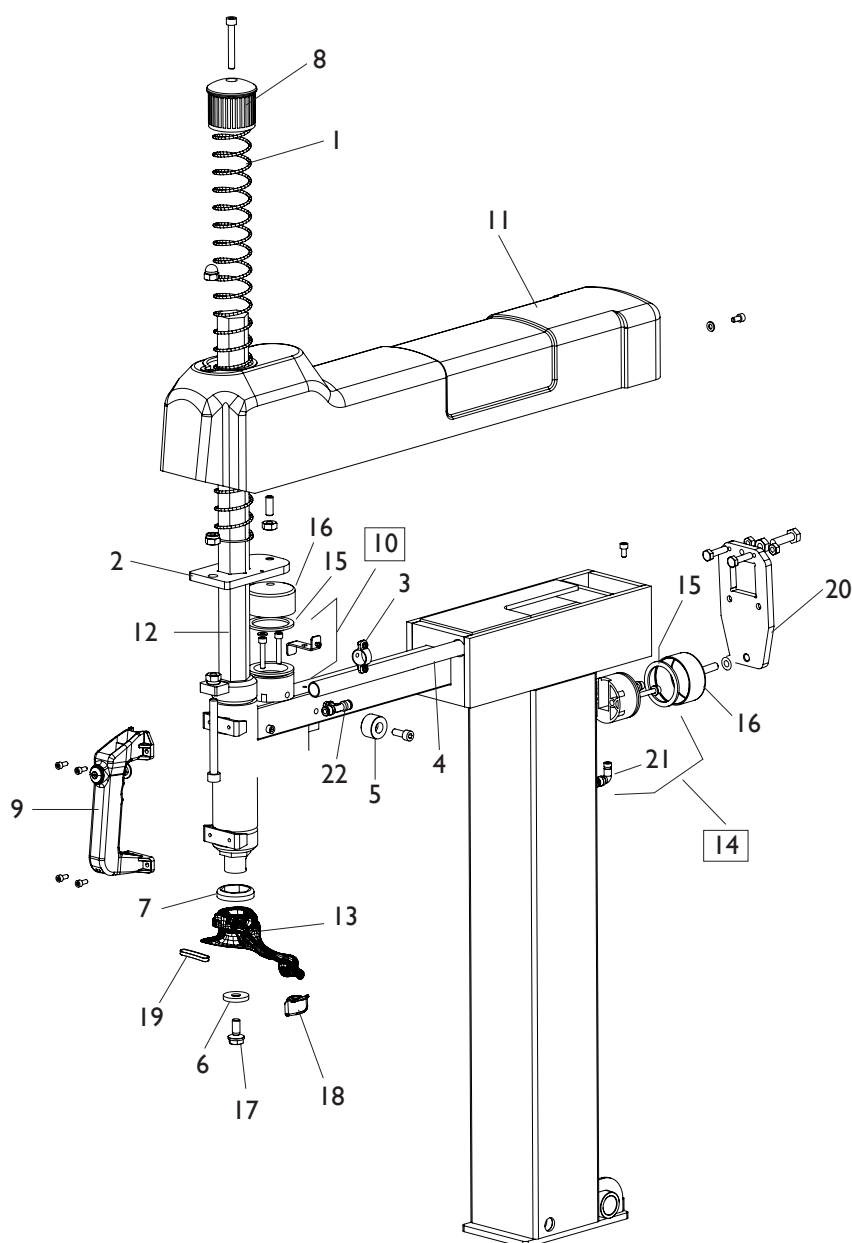
COMPLESSIVO TILTING BACK LL

TILTING BACK LL OVERALL



Rif. Ref.	Codice Code	Descrizione	Description
1	4-103556	APPOGGIO CERCHIO	RIM SUPPORT
2	4-103555	PROTEZIONE PALO	ARM COVER
3	358135	PORTAGRASSO	GREASER
4	422019	PIEDE	FOOT

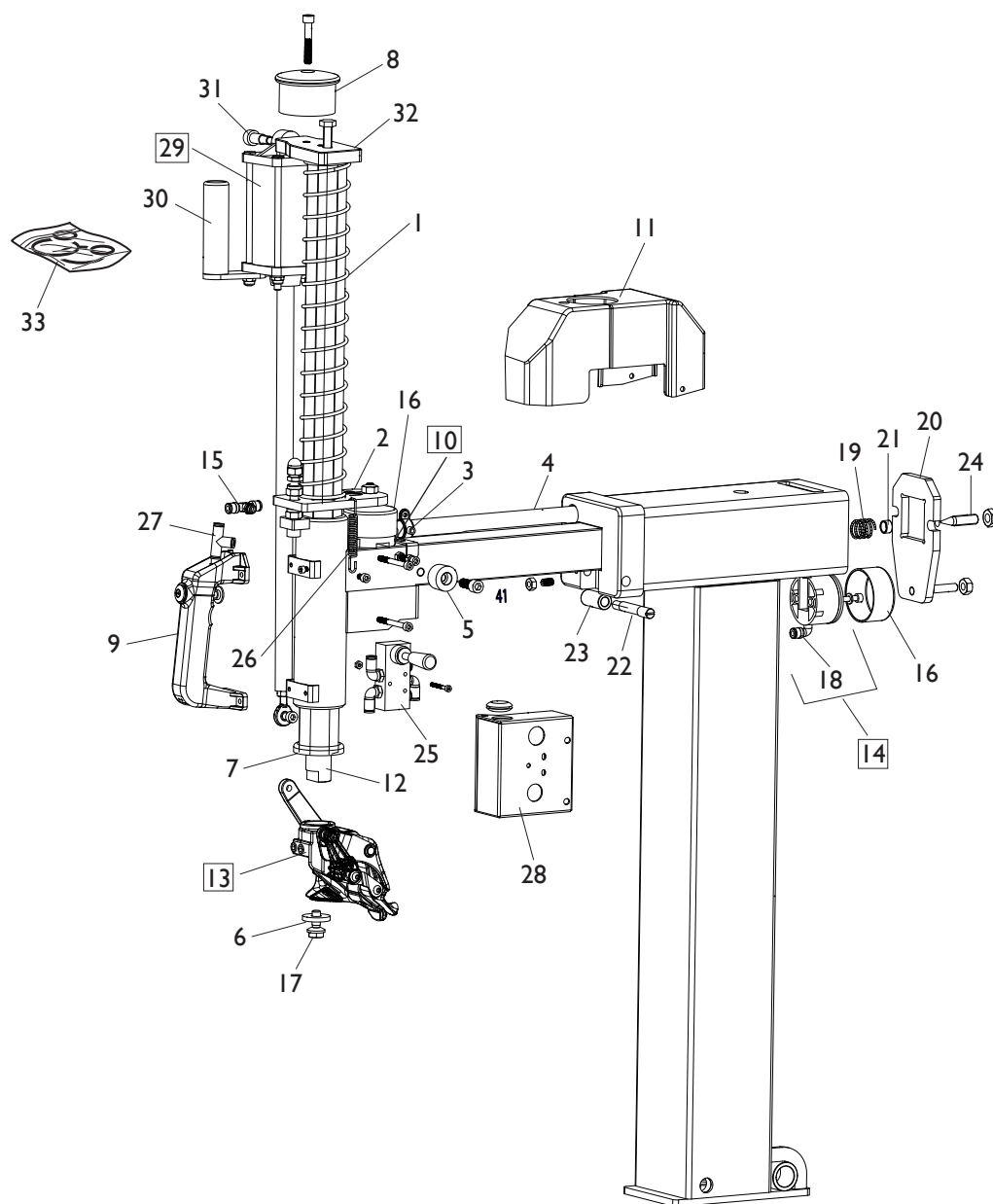
GRUPPO BRACCIO OPERANTE OPERATING ARM GROUP



[TORNA AL COMPLESSIVO](#)
[RETURNS TO OVERALL](#)

Rif. Ref.	Codice Code	Descrizione	Description
1	4-100086	MOLLA	SPRING
2	4-107303	PIASTRA BLOCCAGGIO VERTICALE	VERTICAL LOCKING PLATE
3	3-01656	COLLARE	COLLAR
4	4-103887	TUBO GUIDA	GUIDE
5	383372	RULLO	ROLLER
6	350194	RONDELLA D.12X33X5	WASHER D.12X33X5
7	428681	ANELLO AMMORTIZZATORE	DAMPING RING
8	423907	POMOLO	KNOB
9	2312380	MANOPOLA	HANDLE
10	239806	ASSIEME PIST. BLOCC.VERTICALE D.60X38	PISTON VERTICAL LOCKING D.60X38
11	4-105205	CARTER TESTATA	HEAD COVER
12	4-106225	BRACCIO VERTICALE	VERTICAL ARM
13	257899	TORRETTA COMPLETA	HEAD ASSEMBLY
14	239805	ASSIEME PISTONE BLOCC. POST. D.60X38	PISTON REAR LOCKING D.60X38
15	443078	GUARNIZIONE D.60X47,6X6,35	SEAL D.60X47,6X6,35
16	326537	CILINDRO D.60	CYLINDER D.60
17	350197	VITE SPECIALE FISS.TORRETTA M10X20	SPECIAL SCREW M10X20
18	442019	INSERTO NERO	BLACK INSERT
19	456533	INSERTO NERO	BLACK INSERT
20	4-111101	PIASTRA BLOCCAGGIO ORIZZONTALE	ORIZONTAL LOCKING PLATE
21	3-00106	RACCPN-L GI/8C T6/4	L-FITTING GI/8C
22	3-00119	RACCPN-T GI/8C T6/4	T-FITTING GI/8C

GRUPPO BRACCIO OPERANTE LL LL OPERATING ARM GROUP



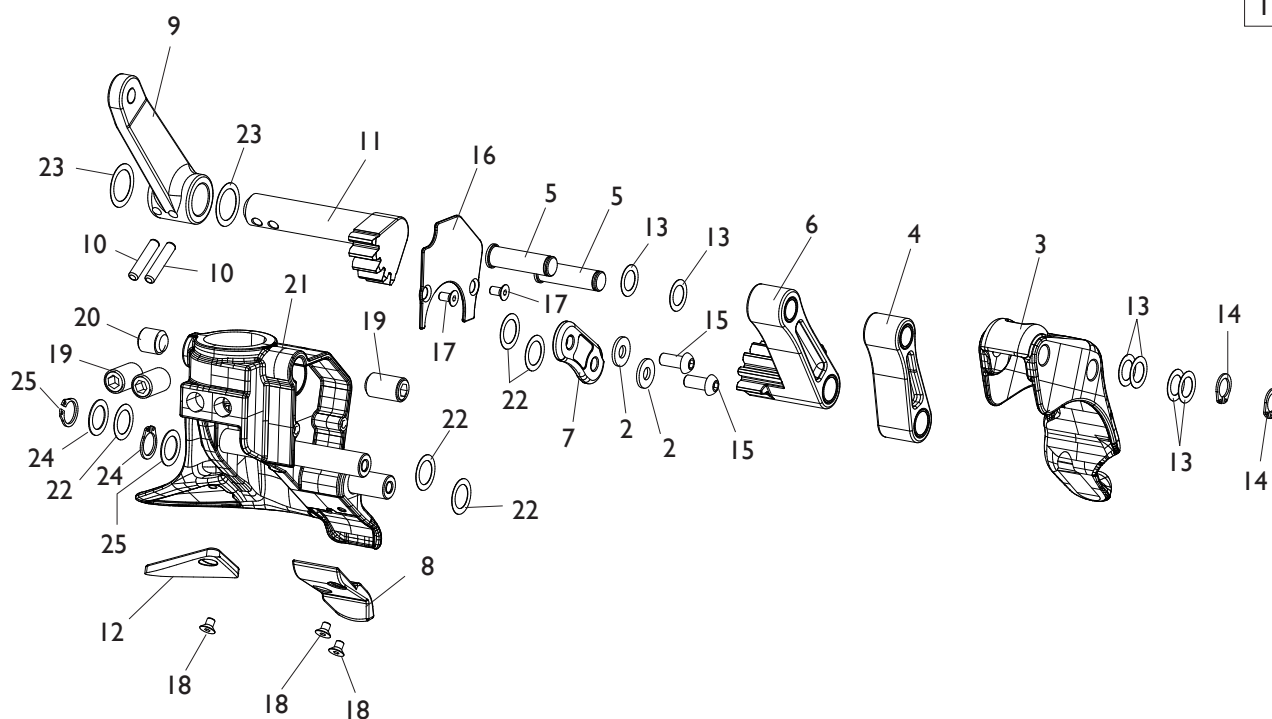
[TORNA AL COMPLESSIVO](#)
[RETURNS TO OVERALL](#)

Rif. Ref.	Codice Code	Descrizione	Description
1	4-900308	MOLLA	SPRING
2	4-900058	PIASTRA BLOCCAGGIO VERTICALE	VERTICAL LOCKING PLATE
3	3-01656	COLLARE	COLLAR
4	4-900317	TUBO GUIDA	GUIDE
5	383372	RULLO	ROLLER
6	350194	RONDELLA D.12X33X5	WASHER D.12X33X5
7	4-900059	ANELLO AMMORTIZZATORE	DAMPING RING
8	423907	POMOLO	KNOB
9	2312380	MANOPOLA	HANDLE
10	239806	ASSIEME PIST. BLOCC.VERT. D.60X38	PISTON VERTICAL LOCKING D.60X38
11	4-900307	CARTER TESTATA	HEAD COVER
12	4-900304	BRACCIO VERTICALE	VERTICAL ARM
13	5-104774	TORRETTA COMPLETA	HEAD ASSEMBLY
14	239805	ASS. PIST. BLOCC. POST. D.60X38	PISTON REAR LOCKING D.60X38
15	3-00119	RACCPN-T GI/8C T6/4	T-FITTING GI/8C
16	326537	CILINDRO D.60	CYLINDER D.60
17	350197	VITE SPEC. FISS.TORRETTA M10X20	SPECIAL SCREW M10X20
18	3-00106	RACCPN-L GI/8C T6/4	L-FITTING GI/8C
19	439787	MOLLA	SPRING
20	4-900319	PIASTRA BLOCC. ORIZZONTALE	ORIZONTAL LOCKING PLATE
21	339803	BOCCOLA	BUSH
22	339786	PERNO	PIN
23	339782	RULLO	ROLLER
24	341836	VITE	SCREW
25	5-900115	VALVOLA COMPLETA	VALVE ASSEMBLY
26	4-111644	MOLLA	SPRING
27	3-900150	RACCORDO-T	T-FITTING
28	4-900305	PIASTRA	PLATE
29	5-900114	CILINDRO COMPLETO	CYLINDER ASSEMBLY
30	4-900301	MANIGLIA	HANDLE
31	4-103906	VITE	SCREW
32	4-900318	PIASTRA	PLATE
33	4-900329	KIT GUARNIZIONI CILINDRO	CYLINDER SEALS KIT

GRUPPO TORRETTA

HEAD GROUP

I

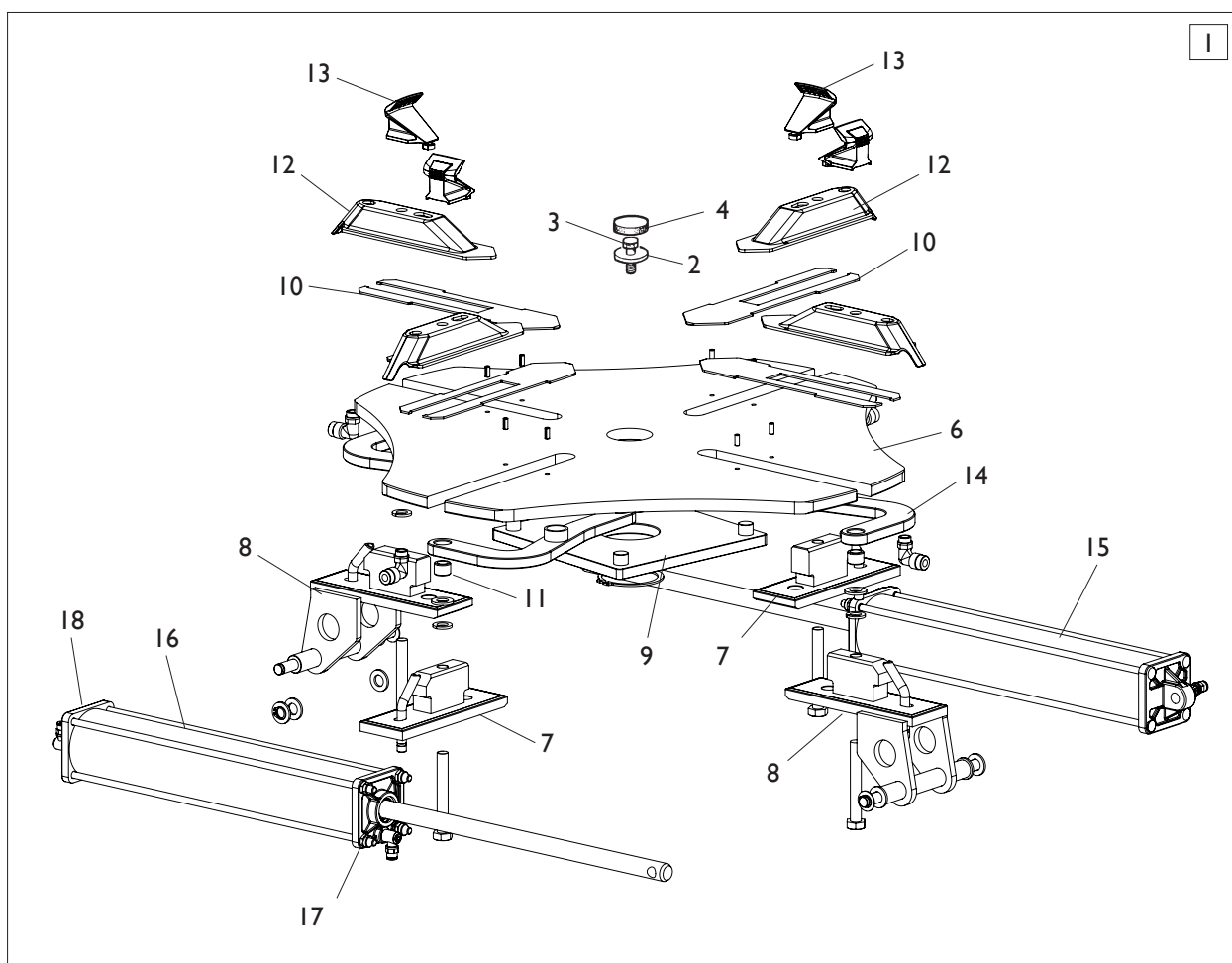


[TORNA AL COMPLESSIVO](#)
[RETURNS TO OVERALL](#)

Rif. Ref.	Codice Code	Descrizione	Description
1	5-104774	GRUPPO TORRETTA	HEAD ASSEMBLY
2	453469	RONDELLA D.6,3X14,8X1,5	WASHER D.6,3X14,8X1,5
3	4-115079	GANCIO	HOOK
4	5-101265	BIELLA	ROD
5	4-103932	PERNO ANTERIORE	FRONT PIN
6	5-104772	BIELLA	ROD
7	4-115080	STAFFA RINFORZO BIELLE	ROD BRACKET
8	4-103502	INSERTO	INSERT
9	4-103256	LEVA DI COMANDO	COMMAND LEVER
10	2-03737	SPINA D.5X24	PLUG D.5X24
11	4-103264	INGRANAGGIO DI COMANDO	COMMAND GEAR
12	4-106611	INSERTO	INSERT
13	314589	RONDELLA D.10X16X0,2	WASHER D.10X16X0,2
14	2-00023	SEEGER D.10	SEEGER D.10
15	2-03409	VTBEI M6X20	ROUND. HEX. HEAD SCREW M6X20
16	4-106610	COPERTURA INGRANAGGI	GEAR COVER
17	2-72205	VTSPEI M4X8	CSK SCREW SOCKET M4X8
18	2-03438	VTSPEI M4X6	CSK SCREW SOCKET M4X6
19	2-02096	VSTEI M12X20	CSK SCREW SOCKET M12X20
20	2-01040	VSTEI M12X12	CSK SCREW SOCKET M12X12
21	4-115182	TORRETTA CON PERNI	HEAD BODY WITH PINS
22	4-103928	RONDELLA D.12,2X18X0,2	WASHER D.12,2X18X0,2
23	4-104696	RONDELLA D.16X22X0,2	WASHER D.16X22X0,2
24	315274	RONDELLA D.12X18X0,5	WASHER D.12X18X0,5
25	2-00025	SEEGER D.12	SEEGER D.12

GRUPPO AUTOCENTRANTE 10-22”

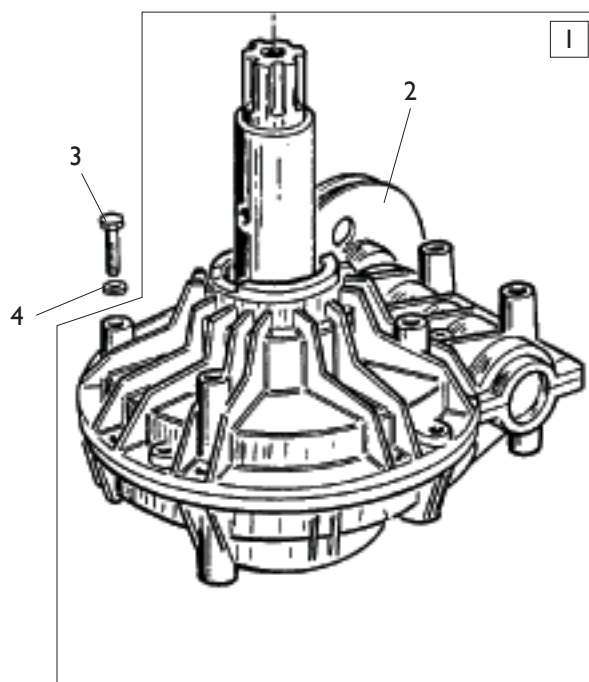
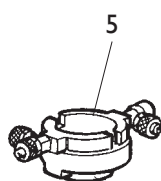
TURNTABLE GROUP 10-22”



[TORNA AL COMPLESSIVO](#)
[RETURNS TO OVERALL](#)

Rif. Ref.	Codice Code	Descrizione	Description
1	5-100101	GRUPPO AUTOCENTRANTE 10-22"	TURNTABLE ASSEMBLY 10-22"
1	5-100183	GRUPPO AUTOCENTRANTE 10-22" T.I.	TURNTABLE ASSEMBLY 10-22" T.I.
2	323363	RONDELLA D.16,5X48X10	WASHER D.16,5X48X10
3	2-01216	VTE M16X1,5X35	HEXAGON HEAD SCREW M16X1,5X35
4	426514	TAPPO TONDO	ROUND CAP
5	4-900200	KIT GUARNIZIONI CILINDRI	CYLINDERS SEAL KIT
6	4-105731	PIATTO AUTOCENTRANTE	TURNTABLE PLATE
7	4-105019	APP. SCORREVOLE TRAINATO	RIM SUPPORT
7	4-100077	APP. SCORREVOLE TRAINATO T.I.	RIM SUPPORT T.I.
8	4-105332	APP. SCORREVOLE TRAINANTE	RIM SUPPORT
8	4-106148	APP. SCORREVOLE TRAINANTE T.I.	RIM SUPPORT T.I.
9	4-105471	FLANGIA COMANDO BIELLE	FLANGE CONTROL RODS
10	4-105367	SLITTA COPRIASOLA	PLATE
11	4-105320	DISTANZIALE	SPACER
12	4-101872	SCORREVOLE	SLIDE
12	4-101871	SCORREVOLE T.I.	SLIDE T.I.
13	3008225	UNGHIA	TOOL
14	4-105371	BIELLA	ROD
15	5-100121	CILINDRO DX	RIGHT CYLINDER
16	5-100106	CILINDRO SX	LEFT CYLINDER
17	4-900193	FLANGIA ANTERIORE	FRONT FLANGE
18	4-900194	FLANGIA POSTERIORE	REAR FLANGE

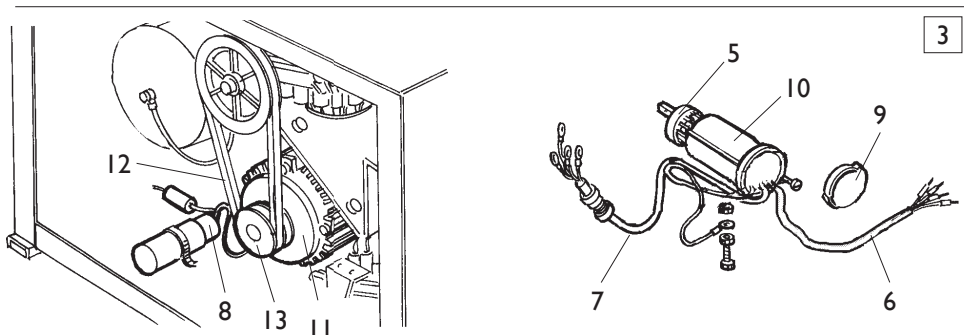
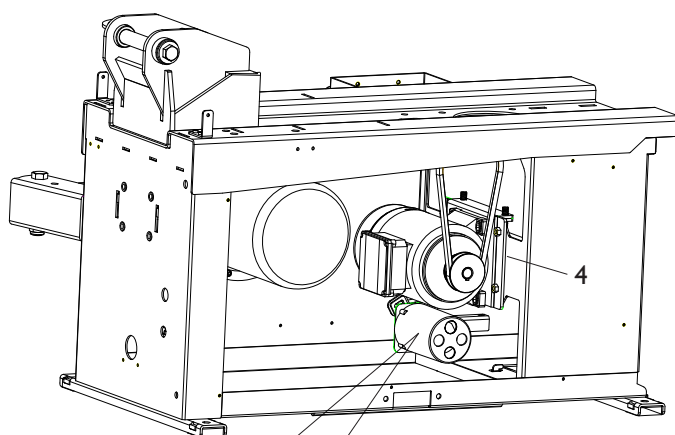
GRUPPO RIDUTTORE GEARBOX GROUP



[TORNA AL COMPLESSIVO](#)
[RETURNS TO OVERALL](#)

Rif. Ref.	Codice Code	Descrizione	Description
1	5-102647	RIDUTTORE	GEARBOX
2	314344	PULEGGIA	PULLEY
3	2-01046	VTE M10X55	HEXAGON HEAD SCREW M10X55
4	2-00213	RONDELLA D.10	WASHER D.10
5	228389	RACCORDO GIREVOLE (NO T.I.)	ROTATING JOINT (NO T.I.)

IMPIANTO ELETTRICO ELECTRICAL SYSTEM

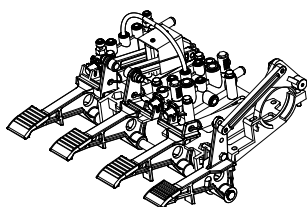


[TORNA AL COMPLESSIVO](#)
[RETURNS TO OVERALL](#)

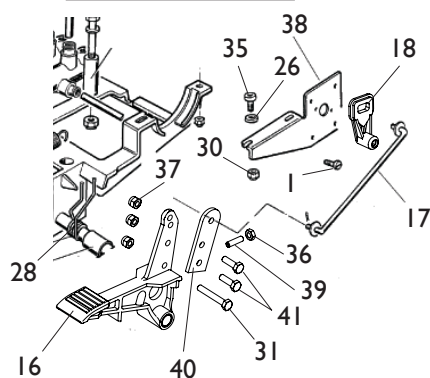
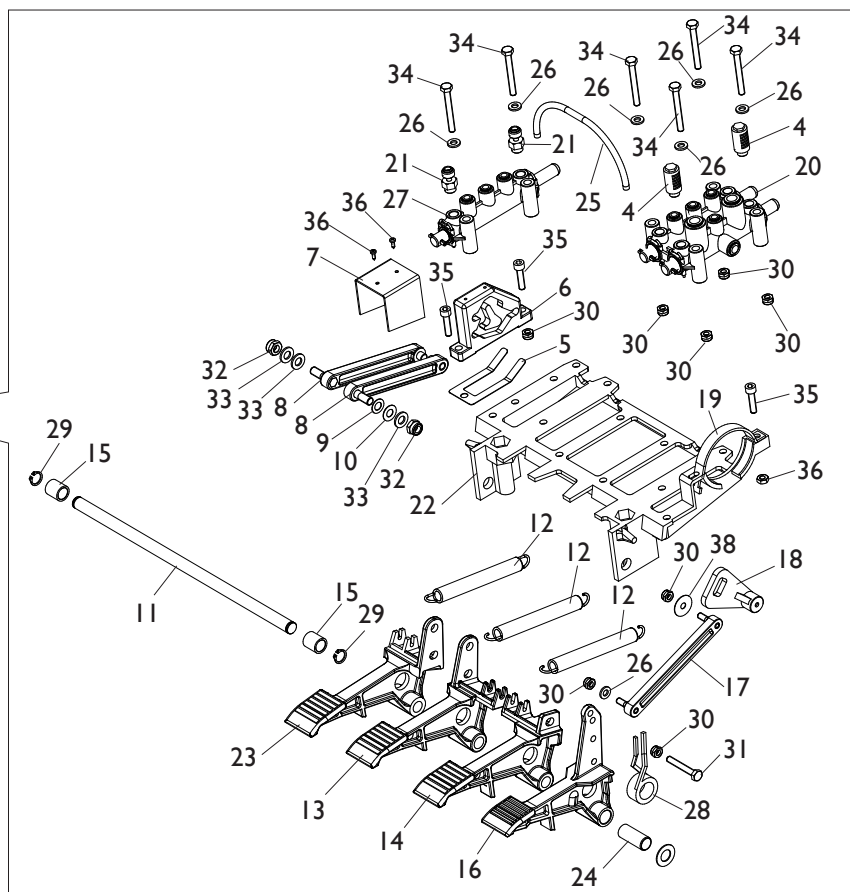
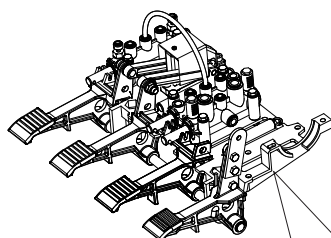
Rif. Ref.	Codice Code	Descrizione	Description
3	5-190349	IMPIANTO ELETTRICO 110V 1ph	ELECTRICAL SYSTEM 110V 1ph
3	5-190348	IMPIANTO ELETTRICO 230V 1ph	ELECTRICAL SYSTEM 230V 1ph
3	5-190350	IMPIANTO ELETTRICO 400/230V 3ph	ELECTRICAL SYSTEM 400/230V 3ph
3	283446	IMPIANTO ELETTRICO 3ph 2v	ELECTRICAL SYSTEM 3ph 2 speed
4	4-101462	STAFFA MOTORE	MOTOR BRACKET
5	5-102742	INVERTITORE 1ph / 3ph	INVERTER 1ph / 3ph
5	5-102745	INVERTITORE 3ph 2v	INVERTER 3ph 2v
6	258746	CAVO RETE 110V/ 230V 1ph	SUPPLY CABLE 110V/ 230V 1ph
6	235518	CAVO RETE 3ph	SUPPLY CABLE 3ph
6	383460	CAVO RETE 3ph 2v	SUPPLY CABLE 3ph 2 speed
7	5-101127	CAVO MOTORE 110V/ 230V 1ph	MOTOR CABLE 110V/ 230V 1ph
7	225390	CAVO MOTORE 3ph	MOTOR CABLE 3ph
7	381517	CAVO MOTORE 4P 3ph 2v	MOTOR CABLE 4P 3ph 2 speed
7	381516	CAVO MOTORE 2P 3ph 2v	MOTOR CABLE 2P 3ph 2 speed
8	4-112632	CONDENSATORE 80mf 110V 1ph	CAPACITOR 80mf 110V 1ph
8	4-112631	CONDENSATORE 60mf 230V 1ph	CAPACITOR 60mf 230V 1ph
9	430991	COPERCHIO PROTEZIONE	LID
10	432065	PROTEZIONE INVERTITORE 1ph / 3ph	INVERTER COVER 1ph / 3ph
10	484447	PROT. INVERTITORE 3ph 2v	INVERTER COVER 3ph 2 speed
11	4-112969	MOTORE 110V 1ph	MOTOR 110V 1ph
11	422013	MOTORE 400/230V 3ph	MOTOR 400/230V 3ph
11	4-104634	MOTORE 230V 1ph 50HZ	MOTOR 230V 1ph 50HZ
11	4-110900	MOTORE 230V 1ph 60HZ	MOTOR 230V 1ph 60HZ
11	4-900034	MOTORE 400 3ph 2v	MOTOR 400 3ph 2 speed
11	4-900096	MOTORE 230 3ph 2v	MOTOR 230 3ph 2 speed
12	3-00554	CINGHIA MOTORE 1ph / 3ph / 3ph 2v	MOTOR BELT 1ph / 3ph / 3ph 2 speed
12	3-00540	CINGHIA MOTORE 110v / 1ph	MOTOR BELT 110v / 1ph
13	331067	PULEGGIA MOTORE 50hz	MOTOR PULLEY 50hz
13	325274	PULEGGIA MOTORE 60hz	MOTOR PULLEY 60hz

GRUPPO PEDALIERA PEDAL GROUP

2 VERSIONE 1 VELOCITA
1 SPEED VERSION



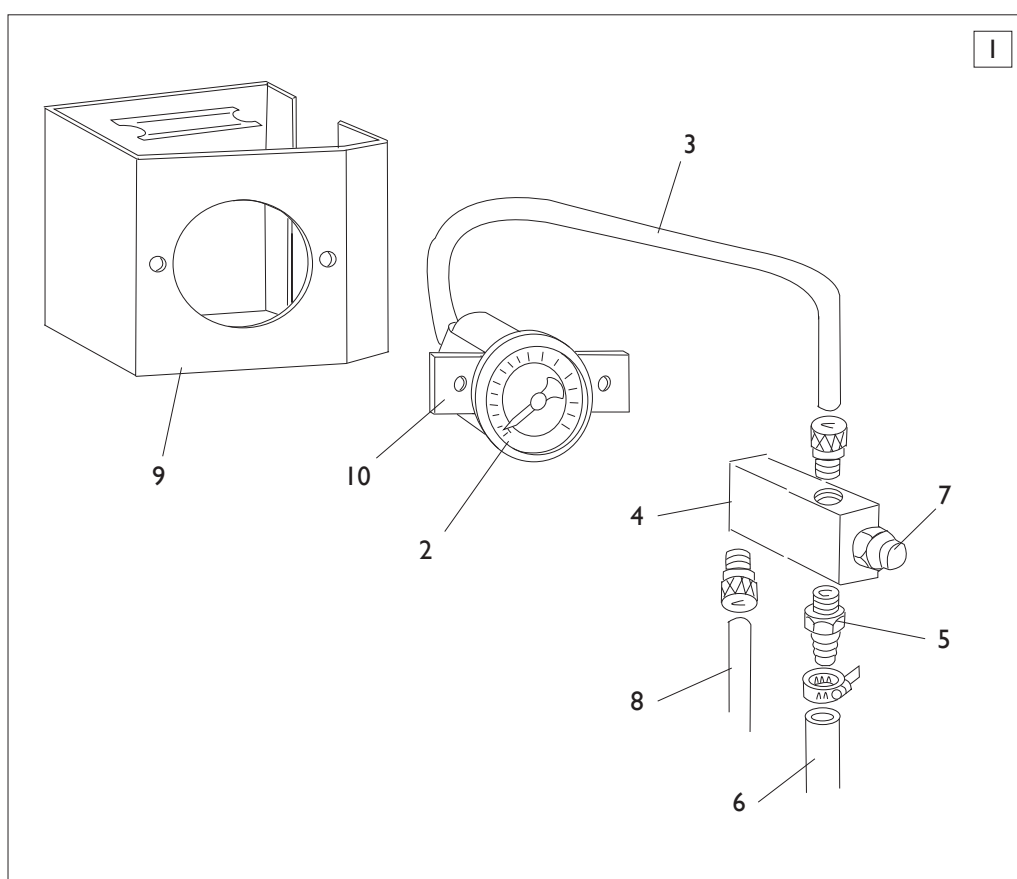
3 VERSIONE 2 VELOCITA
2 SPEED VERSION



[TORNA AL COMPLESSIVO](#)
[RETURNS TO OVERALL](#)

Rif. Ref.	Codice Code	Descrizione	Description
1	2-00310	VTCEI M6X20	HEXAGON SOCKET HEAD SCREW M6X20
2	5-105188	PEDALIERA 1 VELOCITA	PEDAL ASSEMBLY 1 SPEED
3	5-900024	PEDALIERA 2 VELOCITA	PEDAL ASSEMBLY 2 SPEED
4	3-00183	SILENZIATORE IN PLASTICA 1/8	PLASTIC SILENCER 1/8
5	325019	BALESTRA A FORCELLA	LEAF SPRING
6	425020	CAMMA DOPPIA	DOUBLE CAM
7	325018	CAVALLOTTO GUIDA BIELLE	U-BOLT
8	425014	BIELLA CAMMA	CAM ROD
9	2-02247	RONDELLA D.8,4X15	WASHER D.8,4X15
10	309358	RONDELLA D.8X16,5X0,5	WASHER D.8X16,5X0,5
11	325005	PERNO PEDALIERA	PEDAL PIN
12	410628	MOLLA D.14X2X105	SPRING D.14X2X105
13	325031	PEDALE AUTOCENTRANTE	TURNTABLE PEDAL
14	325032	PEDALE STALLONATORE	BEAD BRAKE PEDAL
15	325050	DISTANZIALE	SPACER
16	5-102714	PEDALE INVERTITORE 1 velocità	INVERTER PEDAL 1 SPEED
16	5-104900	PEDALE INVERTITORE 2 velocità	INVERTER PEDAL 2 SPEED
17	425010	BIELLA 1 velocità	ROD 1 SPEED
17	4-115291	BIELLA 2 velocità	ROD 2 SPEED
18	425027	LEVA INVERTITORE 1 velocità	INVERTER LEVER 1 SPEED
18	404283	LEVA INVERTITORE 2 velocità	INVERTER LEVER 2 SPEED
19	332495	CAVALLOTTO BLOCC. INVERTITORE	INVERTER LOCKING
20	5-102739	RUBINETTO DOPPIO	DOUBLE VALVE
21	433675	REGOLATORE 1/8	REGULATOR 1/8
22	524273	SUPPORTO COMANDI	COMMAND SUPPORT
23	325030	PEDALE ALZAPALO	TILTING PEDAL
24	425011	BOCCOLA D.12X14X33,5	BUSH D.12X14X33,5
25	315268	TUBO D.6X1 L.260mm	RYLSAN HOSE D.6X1 L.260mm
26	2-00211	RONDELLA D.6	WASHER D.6
27	257137	RUBINETTO SINGOLO	SINGLE VALVE
28	4-109664	MOLLA COMANDO INTERRUOTORE 1v	INVERTER SPRING 1 SPEED
28	428682	MOLLA COM. INTERRUOTORE 2v	INVERTER SPRING 2 SPEED
29	2-00025	SEEGER D.12	SEEGER D.12
30	2-01979	DADO ES.A. M6	AUTOLOCKING HEXAGON NUT M6
31	2-00366	VTE M6X40	HEXAGON HEAD SCREW M6X40
32	2-01137	DADO ES.A. M8	AUTOLOCKING HEXAGON NUT M8
33	2-00212	RONDELLA D.8	WASHER D.8
34	2-00411	VTE 1/2F M6X50	HEXAGON HEAD SCREW 1/2F M6X50
35	2-00312	VTCEI M6X25	HEXAGON SOCKET HEAD SCREW M6X25
36	2-01272	VATBIC D.2,9X9,5	SCREW D.2,9X9,5
37	2-01257	DADO ES.A. M6	AUTOLOCKING HEXAGON NUT M6
38	4-101638	SUPPORTO INVERTITORE 2 velocità	INVERTER SUPPORT 2 SPEED
39	2-00688	VSTEI M6X20	CSK SCREW SOCKET M6X20
40	4-115273	PROLUNGA BIELLA 2 velocità	ROD EXTENTION 2 SPEED
41	2-02339	VTE M6X20	HEXAGON HEAD SCREW M6X20

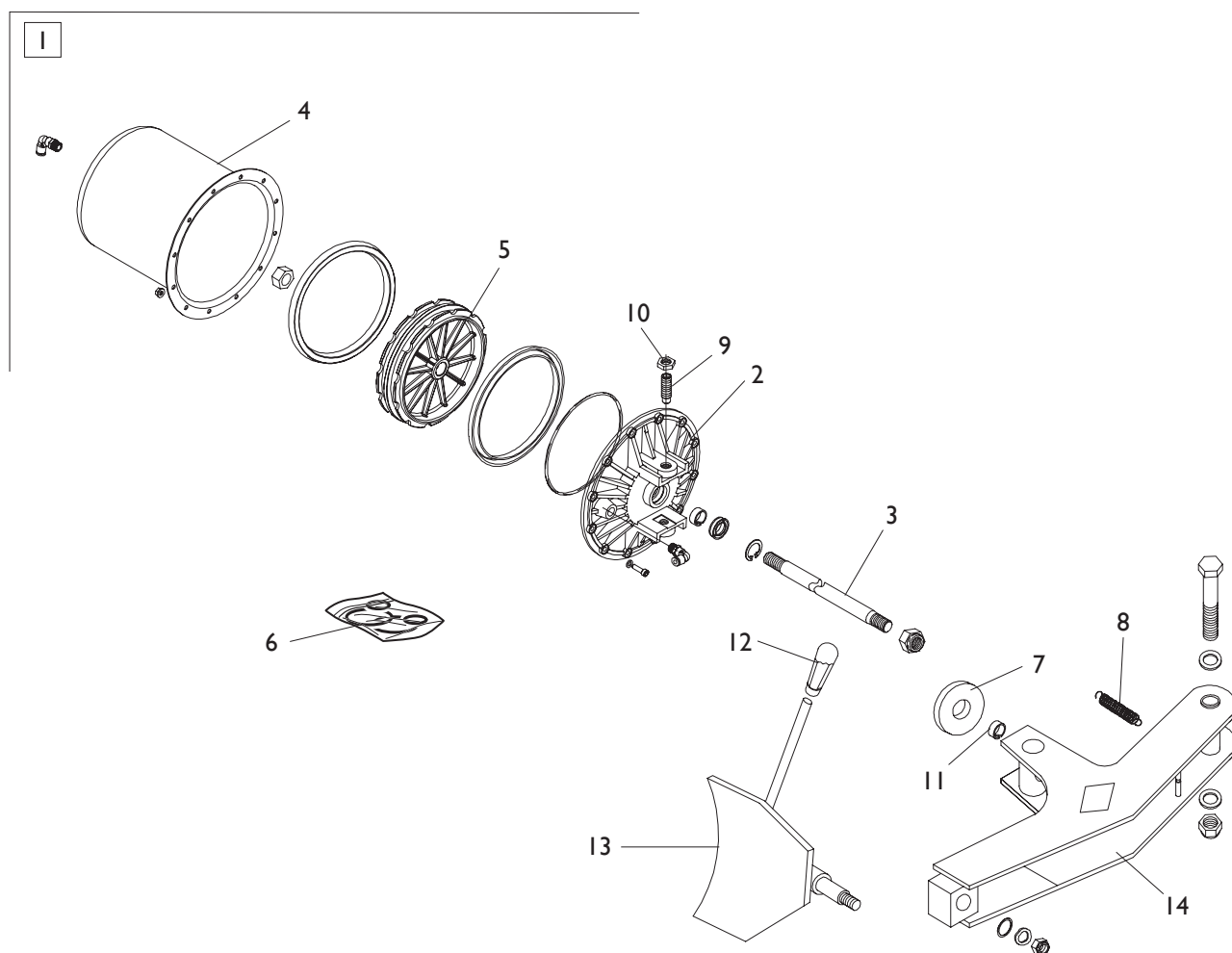
GRUPPO GONFIAGGIO INFLATION GROUP



[TORNA AL COMPLESSIVO](#)
[RETURNS TO OVERALL](#)

Rif. Ref.	Codice Code	Descrizione	Description
1	5-101190	SCATOLA GONFIAGGIO BAR/PSI	BAR/PSI INFLATION BOX ASSEMBLY
2	3-00489	MANOMETRO BAR/PSI	BAR/PSI PRESSURE GAUGE
3	315267	TUBO RYLSAN 6XI L.220mm	RYLSAN HOSE 6XI L.220mm
4	4-109936	BLOCCHETTO	BLOCK
5	3-00007	RACCPN ATTACCO RESCA 7 GI/4	RESCA FITTING GI/4
6	339425	TUBO 18 ATM. D.6-14 L.1600mm	RUBBR HOSE D.6-14 L.1600mm
7	235463	VALVOLA SGONFIAGGIO	DEFLATION VALVE
8	323042	TUBO RYLSAN 8XI L.900mm	RYLSAN HOSE 8XI L.900mm
9	4-102371	SCATOLA MANOMETRO	GAUGE BOX
10	353537	SUPPORTO MANOMETRO	PRESSURE GAUGE SUPPORT

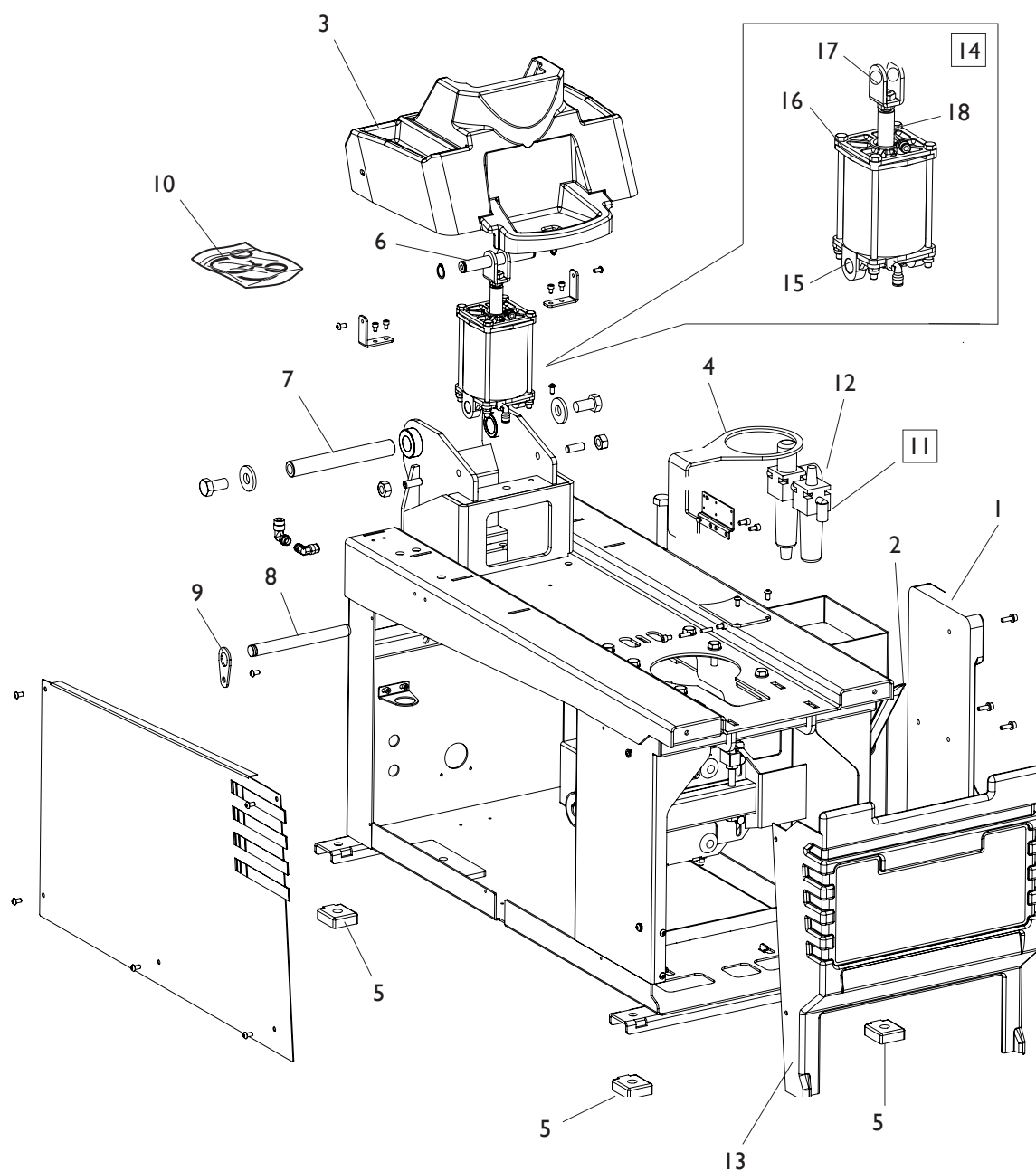
GRUPPO STALLONATORE BEAD BREAKING GROUP



[TORNA AL COMPLESSIVO](#)
[RETURNS TO OVERALL](#)

Rif. Ref.	Codice Code	Descrizione	Description
1	5-101089	CILINDRO STALLONATORE D.186	BEAD BREAKER CYLINDER D.186
2	351905	FALNGIA D.186	FLANGE D.186
3	4-104405	STELO	STEM
4	4-104500	CILINDRO D.186	CYLINDER D.186
5	337848	PISTONE D.186X44	PISTON D.186X44
6	238212	KIT GUARNIZIONI CILINDRO D.186	SEAL KIT CYLINDER D.186
7	35009784	TAMPONE DISTANZIALE	SPACER
8	4-112430	MOLLA TRAZIONE	SPRING
9	431864	VITE SPECIALE FISS. CILINDRO M14X42	SPECIAL SCREW M14X42
10	2-00992	DADO ES. M14	HEXAGON NUT M14
11	425003	ANELLO	RING
12	425219	MANOPOLA	KNOB
13	4-109824	PALETTA	BEAD BREAKER
14	4-115375	BRACCIO	ARM

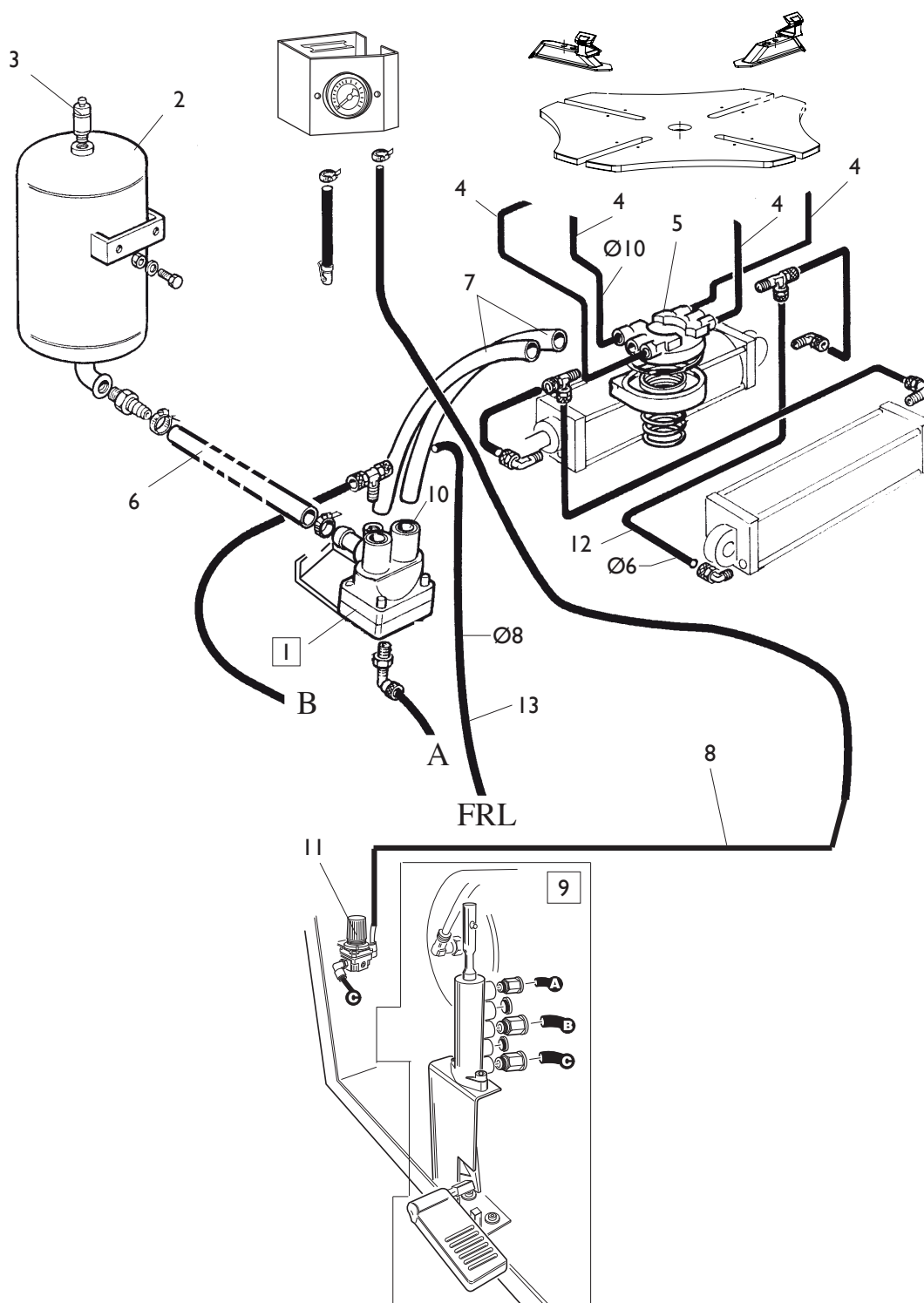
GRUPPO CASSONE FRAME GROUP



[TORNA AL COMPLESSIVO](#)
[RETURNS TO OVERALL](#)

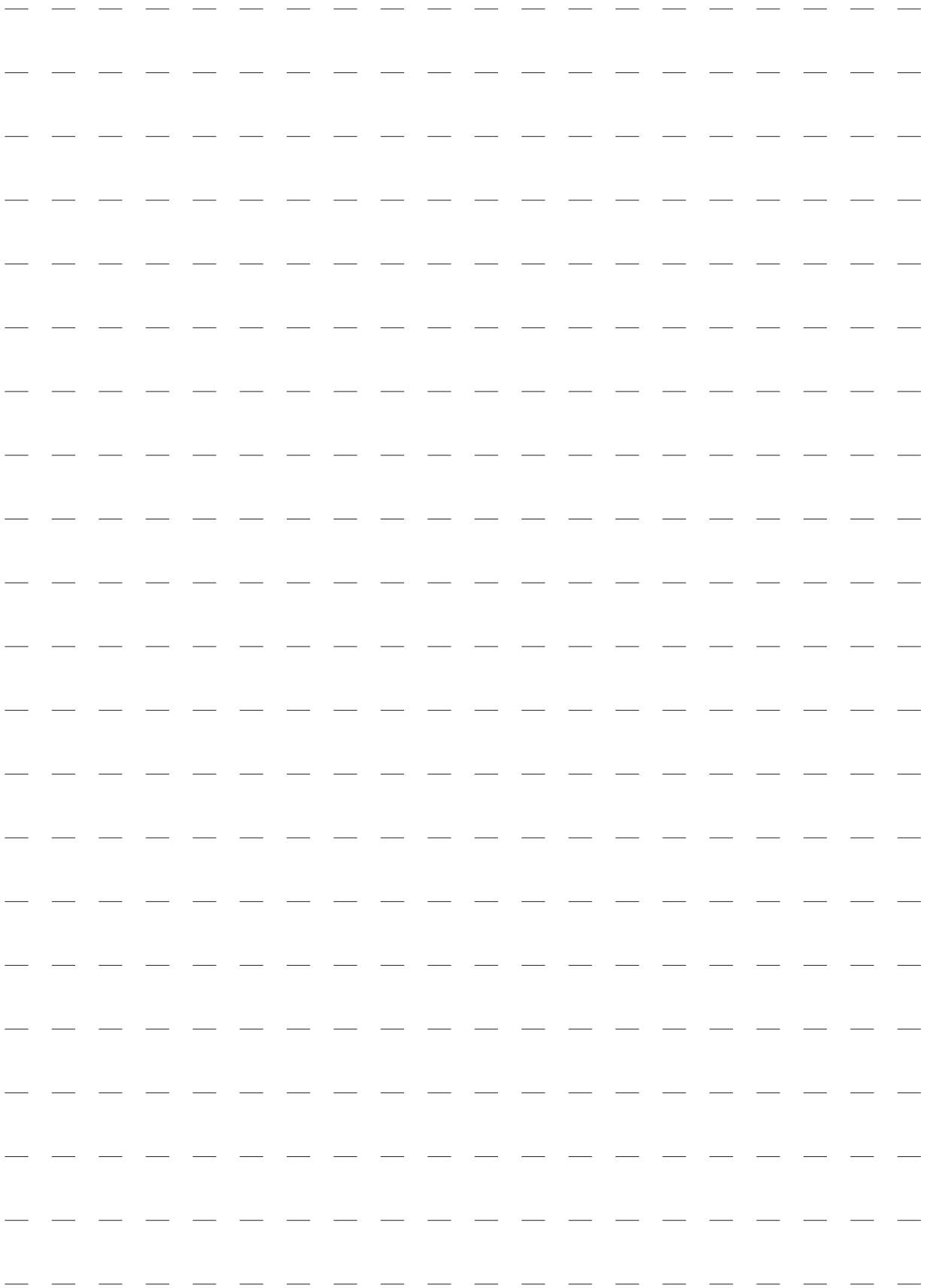
Rif. Ref.	Codice Code	Descrizione	Description
1	4-103556	APPOGGIO CERCHIO	RIM SUPPORT
2	444288	LEVA	LEVER
3	4-103555	PROTEZIONE PALO	ARM COVER
4	358135	PORTAGRASSO	GREASER
5	422019	PIEDE	FOOT
6	4-105837	PERNO SUP. CIL. RIBALTO PALO	CYLINDER UPPER PIN
7	4-105836	PERNO PALO	ARM PIN
8	4-105786	PERNO FULCRO CILINDRO	CYLINDER FULCRUM PIN
9	4-105787	PIASTRINO DI FERMO	PLATE
10	241484	KIT GUARNIZIONI CIL. RIB. PALO	CYLINDER SEAL KIT
11	5-191166	FILTRO COMPLETO	FILTER ASSEMBLY
12	3-00488	MANOMETRO D.40 1/8 0-12 BAR/PSI	PRESSURE GAUGE D.40 1/8 0-12 BAR/PSI
13	4-102221	CARTER PEDALIERA	PEDAL COVER
14	5-100553	CILINDRO RIBALTO PALO	CYLINDER ASSEMBLY
15	338299	FLANGIA POSTERIORE D.95	REAR FLANGE D.95
16	338300	FLANGIA ANTERIORE D.95	FRONT FLANGE D.95
17	4-115954	SUPPORTO ATTACCO CILINDRO	CYLINDER ATTACK
18	4-115953	STELO	STEM

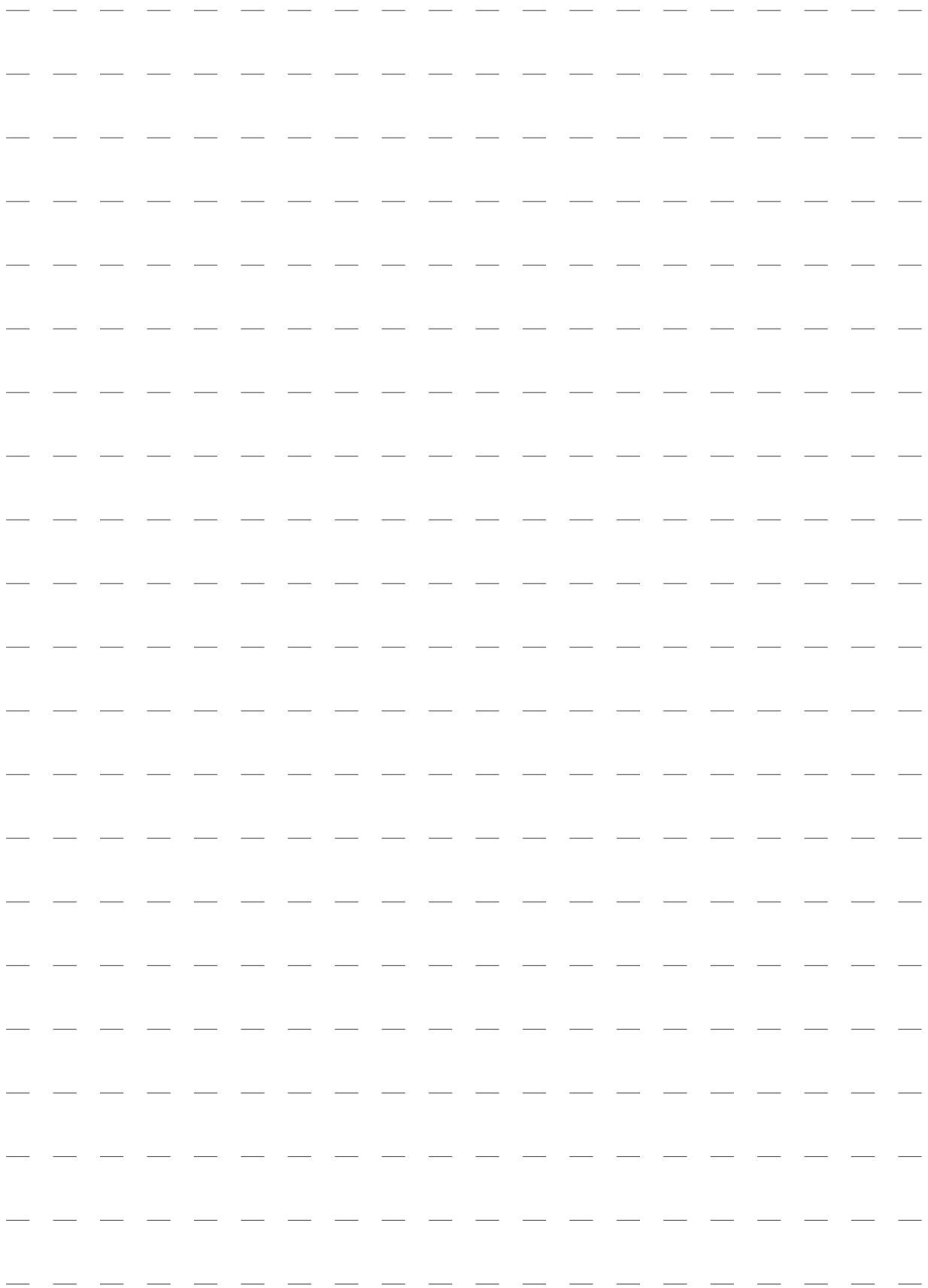
GRUPPO GONFIAGGIO T.I. T.I. INFLATION GROUP



[TORNA AL COMPLESSIVO](#)
[RETURNS TO OVERALL](#)

Rif. Ref.	Codice Code	Descrizione	Description
1	5-101201	VALVOLA DI GONFIAGGIO T.I.	T.I. INFLATION VALVE
2	240968	SERBATOIO CON VALVOLA	TANK ASSEMBLY
3	3-00356	VALVOLA DI MAX 11 BAR	VALVE 11 BAR
4	353999	TUBO POLIUR.ARIA D.10X1,25	HOSE D.10X1,25
5	241841	RACCORDO GIREVOLE T.I.	ROTATING JOINT T.I.
6	4-113030	TUBO IN GOMMA 25X37 18ATM. L.175mm	RUBBER HOSE 25X37 L.175mm
7	4-103544	TUBO RYLSAN TRASP. 14X1 L.750mm	RYLSAN HOSE 14X1 L.750mm
8	339425	TUBO 18 ATM. D.6-14 L.1600mm	RUBBER HOSE D.6-14 L.1600mm
9	5-101193	GRUPPO DI GONFIAGGIO CPL.	INFLATION ASSEMBLY
10	3-02945	CARTUCCIA	CARTRIGE
11	3-00516	REGOLATORE DI PRESSIONE	PRESSURE REGULATOR
12	1-01684	TUBO RYLSAN D6X1	RYLSAN HOSE D.6X1
13	1-01683	TUBO RYLSAN D8X1	RYLSAN HOSE D.8X1





Code 4-I09927C

Production date : 09 / 2014

Il disegno è realizzato con tutti i particolari ma solo quelli codificati sono forniti come ricambi. L'Azienda si riserva la facoltà di apportare modifiche senza preavviso.

The drawing shows all parts but only the coded parts are supplied as spares. The Company reserves the right to make modifications without prior notice.