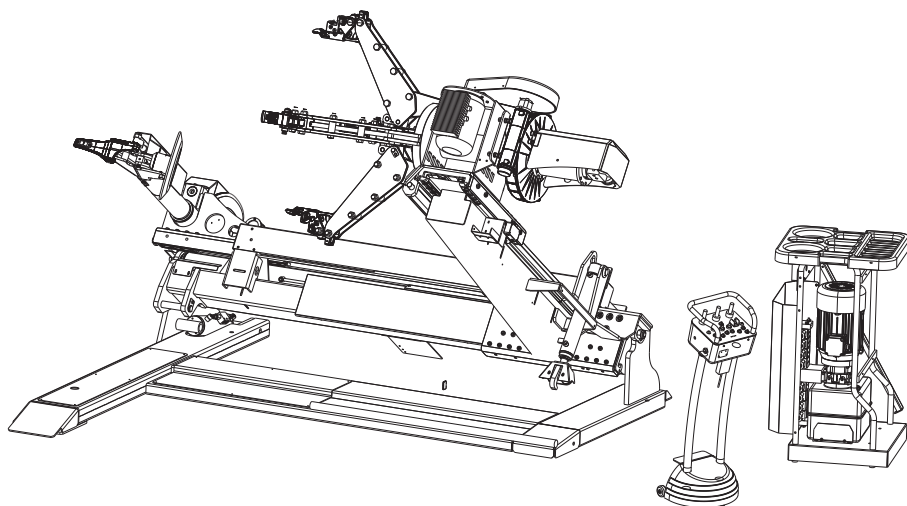


Questo libretto non autorizza l'utente ad intervenire sulle macchine ad esclusione di quanto esplicitamente descritto nel Manuale d'uso, ma consente all'utente di fornire informazioni precise all'Assistenza tecnica, al fine di ridurre i tempi di intervento.

MONSTER AGTT

The "Spare parts" booklet does not authorize the user to carry out work on the machine unless expressly specified in the instruction manual, but does enable him to provide accurate information to the assistance service in order to reduce downtime.

PEZZI DI RICAMBIO SPARE PARTS LIST ERSATZTEILLISTE PIECES DE RECHANGE



Code

4-329711E

Production

01 / 13

Der Katalog Ersatzteile stellt keine Genehmigung zu eigenmächtigen Eingriffen dar (mit Ausnahme jener im Handbuch beschriebenen), sondern er soll den Anwender in die Lage versetzen, dem technischen Service präzise Informationen zu liefern, um die Reparaturzeiten zu verkürzen.



Le livret "Pièces de rechange", n'autorise pas l'utilisateur à intervenir sur les machines, sauf pour tout ce qui est clairement décrit dans le manuel d'utilisation, mais lui permet de fournir des informations précises à l'assistance technique, afin de diminuer les délais d'intervention.

I

Sul presente documento sono stati indicati in grassetto i codici che sono variati rispetto a quelli riportati nella precedente versione del 09/12

En

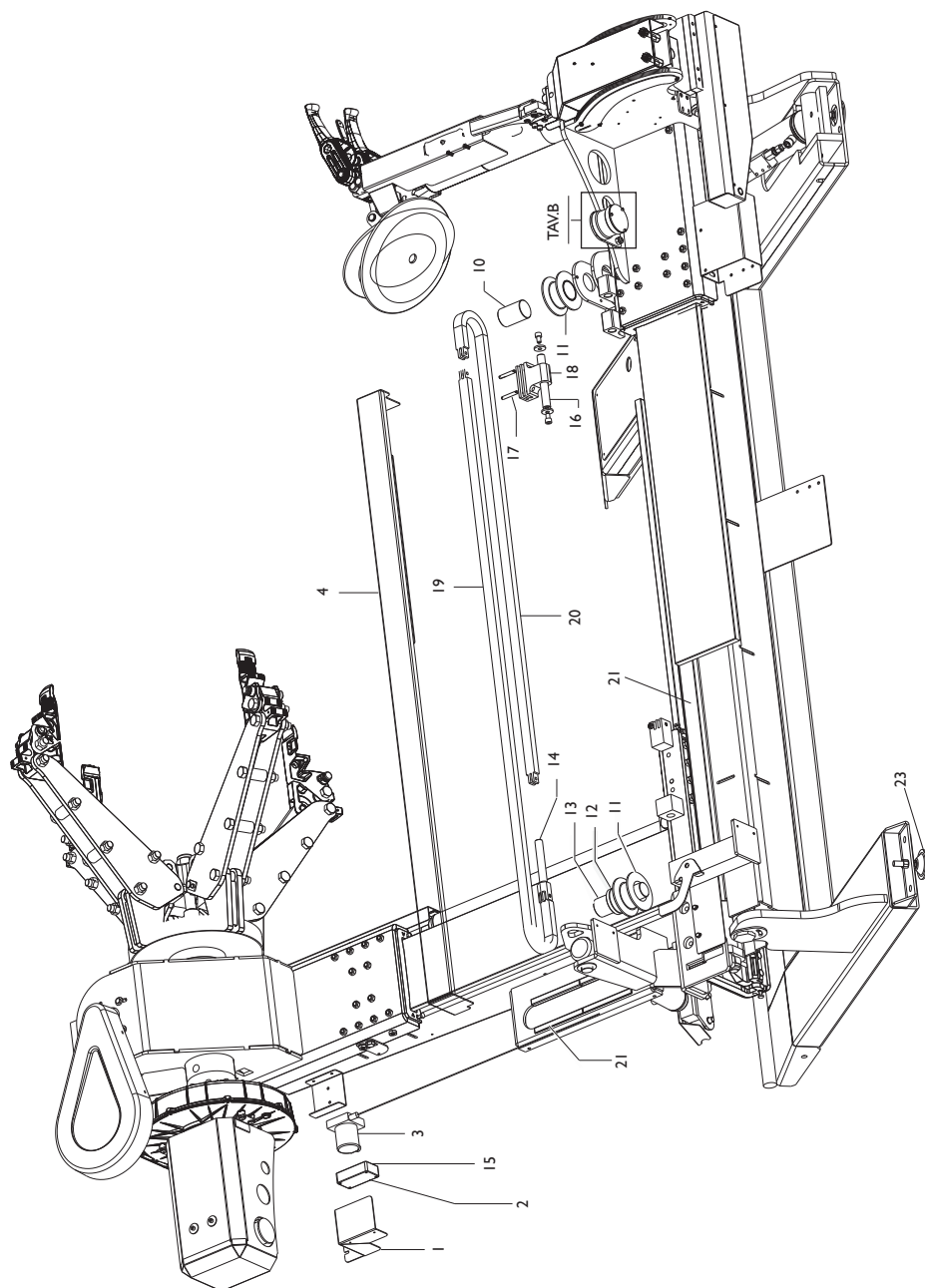
Codes that have changed from those given in the previous version dated 09/12 are indicated in bold type in this document

De

Die gegenüber der Vorgängerversion vom 09/12 geänderten Codes sind im vorliegenden Dokument fettgedruckt angegeben

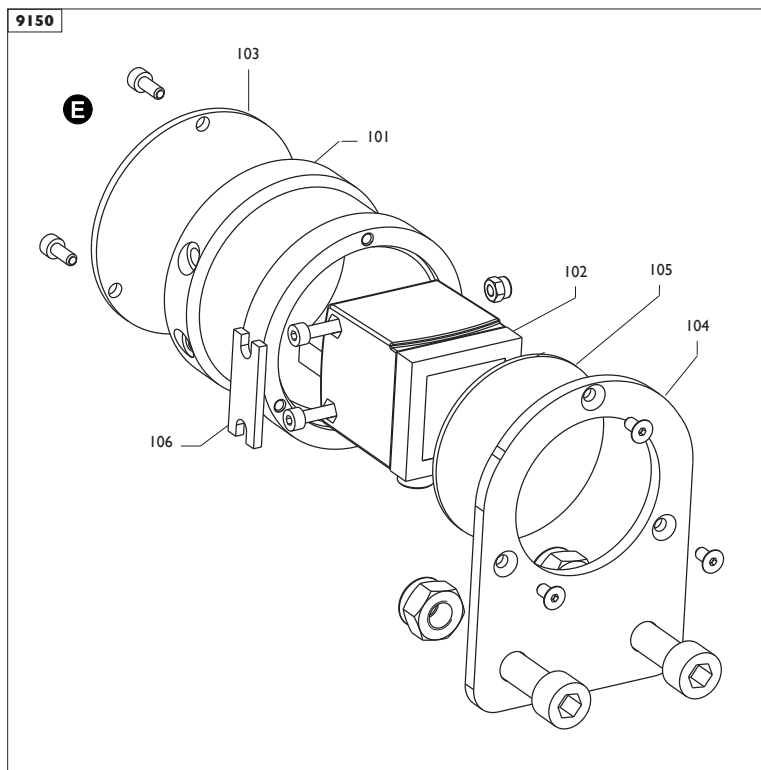
Fr

Ce document reporte en gras les codes qui ont été modifiés par rapport à ceux reportés dans la version précédente du mois de 09/12

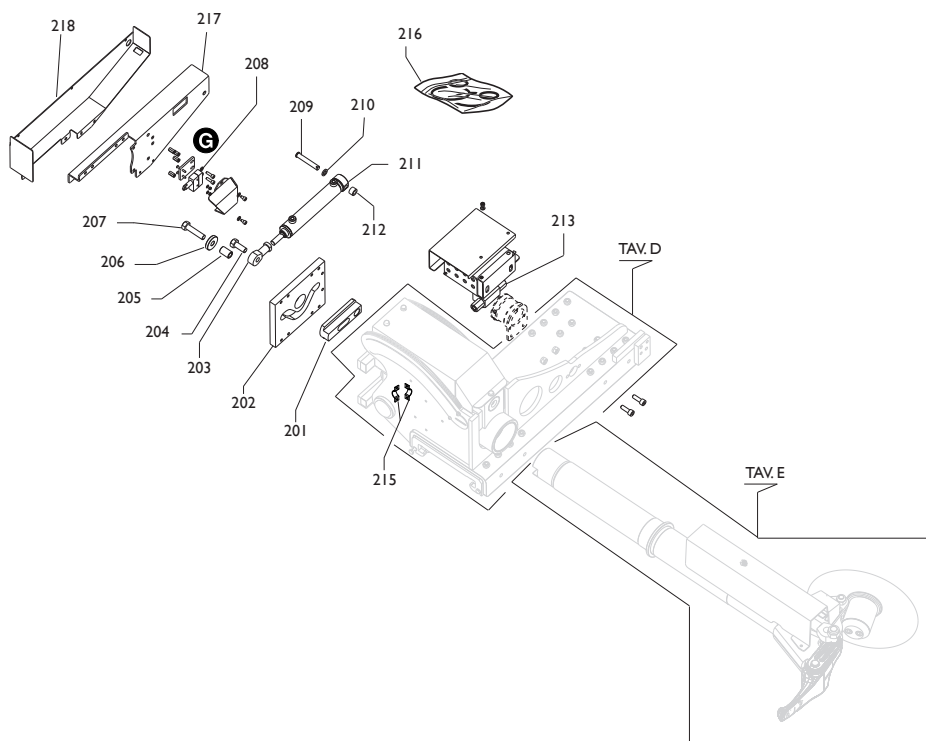


| | | | |
|--|--------------|-------------|----------------|
|  | MONSTER AGTT | Complessivo | TAV.A - 03B/10 |
|--|--------------|-------------|----------------|

| | | | |
|----------|-------------|------------------------------|------------------|
| 0001 | 4-329954/16 | CARTER PROTEZIONE SENSORE | CASING |
| 0002 | 4-330076 | SCATOLA POTENZIOMETRO | BOX |
| 0003 | 4-330066 | POTENZIOMETRO | POTENZIOMETER |
| 0004 | 4-329683/90 | CARTER CATENA/PULEGGE | CASING |
| 0010 | 4-329692 | PERNO PULEGGIA CORTO | PIN |
| 0011 | 5-103301 | PULEGGIA+BOCCOLA | PULLEY+BUSCHING |
| 0012 | 4-329694 | RONDELLA D.70 | WASHER |
| 0013 | 4-329691 | PERNO PULEGGIA LUNGO | PIN |
| 0014 | 4-329689 | TENSIONATORE CATENA | SUPPORT |
| 0015 | 4-330067 | SCHEDA AMPLIF.BUFFER | P.C.BOARD BUFFER |
| B | | | |
| | 4-108976 | CAVO CON SENSORE PROXIMITY | CABLE |
| 0016 | 4-109344 | PERNO ATTACCO CATENA | PIN |
| 0017 | 4-109346 | PERNO FISS.CATENA | PIN |
| 0018 | 4-109345 | ATTACCO CATENA | BLOCK |
| 0019 | 4-109356 | CATENA SUPERIORE 73" | CHAIN |
| 0020 | 4-109357 | CATENA INFERIORE 58" | CHAIN |
| 0021 | 4-329543 | PROFILATO DI SCORRIMENTO | SUPPORT |
| 0022 | 4-108992 | LAMIERA CARTER CILINDRO D.80 | CASING |
| 0023 | 259031 | PIEDE | FOOT |



| | | | |
|----------|-------------|---------------------------|---------|
| 9150 | 5-300867 | GRUPPO LASER | LASER |
| 0101 | 4-330090 | SUPPORTO LASER | SUPPORT |
| 0102 | 4-330068 | SENSORE DISTANZA OTTICO | SENSOR |
| 0103 | 4-330089/90 | FONDELLO | PLATE |
| 0104 | 4-330086/90 | LAMIERA CHIUSURA | PLUG |
| 0105 | 4-330087 | VETRO X LASER | GLASS |
| 0106 | 4-330088 | SPESSORE X LASER | WASHER |
| E | 4-330063 | CAVO COLLEG.SENSORE LASER | CABLE |



0201
0202
0203
0204
0205
0206
0207
0208
0209
0210
0211
0212
0213
0215
0216
0217
0218

4-329785
4-329896
4-329916
2-91715
4-329784
4-329782
2-03601
4-329798
4-329780
4-329783
5-300824/90
4-329781
442912
441258
298116
4-329895
4-329894

PIASTRA RITEGNO
PIASTRA PERCORSO ROT.
SNODO SFERICO M14
VITE M8x12
Distanziale
RONDELLA
VITE M14x1,5x60
MICRO
PERNO ROT.CILINDRO
RONDELLA BASSA
CILINDRO ROT.UTENSILE
RONDELLA ALTA
VALVOLA DI BLOCCO PILOTATA
COLLARE
KIT GUARNIZIONI CIL.ROT.UTENSILE (0211)
LAMIERA SOST.CILINDRO
COPERTURA CILINDRO

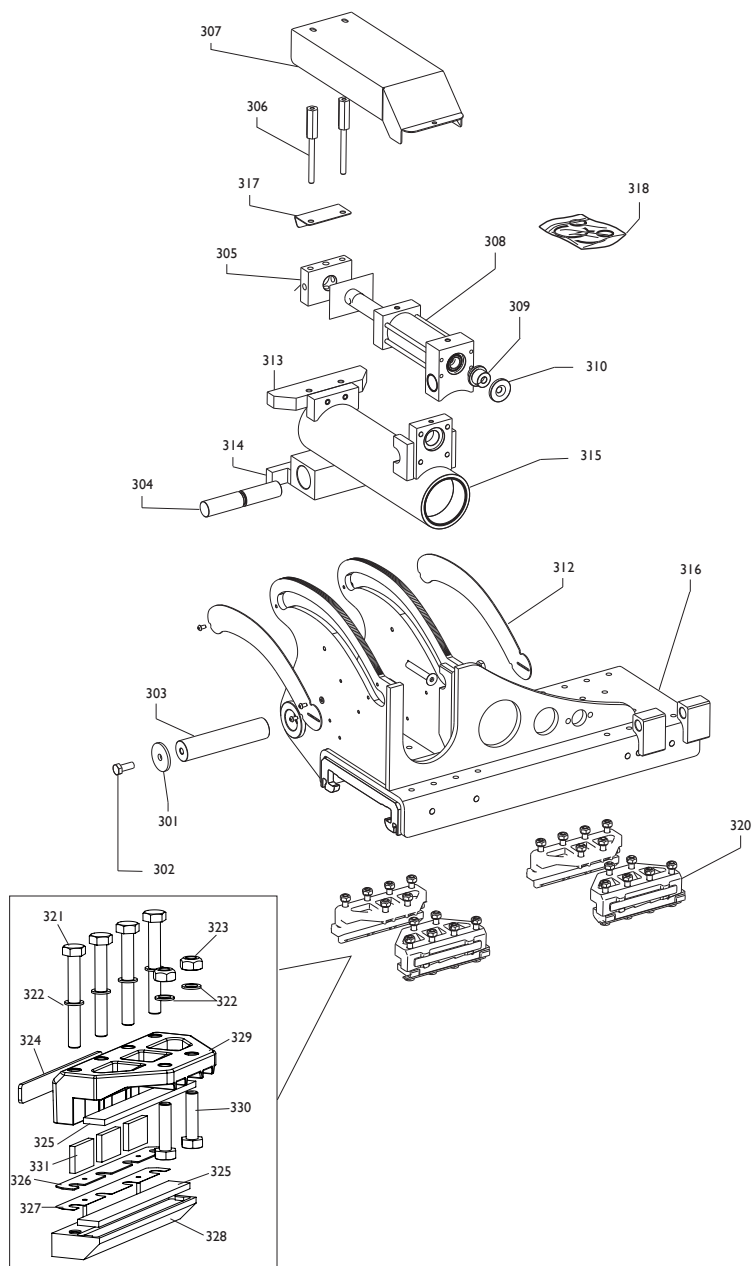
PLATE
PLATE
JOINT
SCREW
SPACER
WASHER
SCREW
SWITCH
PIN
WASHER
CYLINDER
WASHER
VALVE
COLLAR
GASKETS
PLATE
COVER



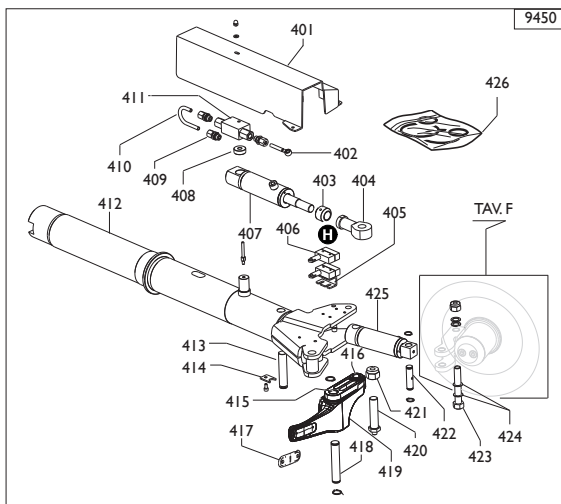
4-108975

CAVO MICRO POST.DISCO STALL.

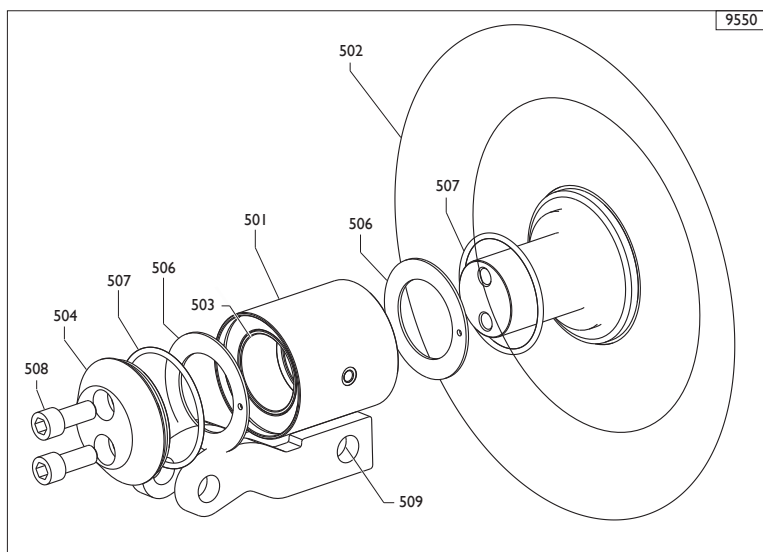
CABLE



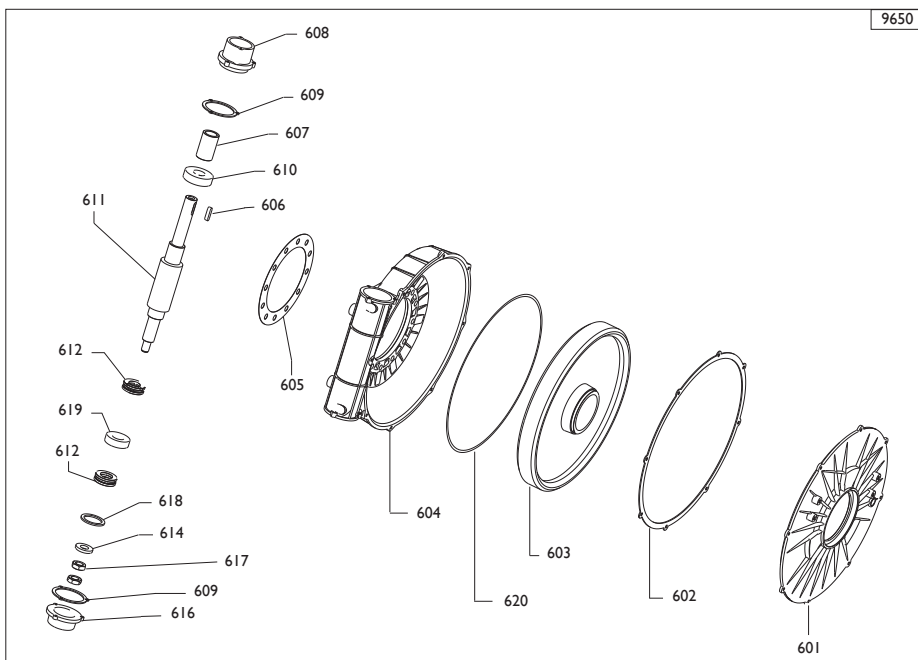
| | | | |
|-------------|-----------------|--------------------------------------|-------------------------|
| 0301 | 4-329883 | RONDELLA DI BLOCCAGGIO | WASHER |
| 0302 | 2-80043 | VITE M12x30 | SCREW |
| 0303 | 4-329884 | PERNO FULCRO | PIN |
| 0304 | 4-329885 | PERNO GUIDA SOLLEVAMENTO BRACCIO UT. | PIN |
| 0305 | 4-329886 | SUPPORTO CILINDRO | SUPPORT |
| 0306 | 4-329903 | DISTANZIALE | SPACER |
| 0307 | 4-329904/90 | CARTER CILINDRO SOLL. | CASING |
| 0308 | 5-300839 | CILINDRO SOLL.+BOCCOLE | CYLINDER |
| 0309 | 4-329881 | ATTACCO CLINDRO | SUPPORT |
| 0310 | 4-329882 | RONDELLA | SUPPORT |
| 0312 | 4-329905 | LAMIERA COPERTURE ASOLE | SHIELD |
| 0313 | 4-109370 | ATTACCO SUP. | TOP CONNECTION |
| 0314 | 4-109369 | ATTACCO INF. | BOTTOM |
| 0315 | 5-103516 | SUPP.BRACCIO+BOCCOLE | SUPPORT |
| 0316 | 4-109362 | CARRELLO UTENSILE | TOOL TROLLEY |
| 0317 | 4-109790 | LAMIERA PROTEZIONE TUBI | PROTECTION |
| 0318 | 298117 | KIT GUARNIZIONI CIL.SOLL.(0308) | GASKETS |
| 0320 | 5-105617 | PATTINO | SLIDE |
| 0321 | 2-03577 | VITE 1/2F M10X80 | SCREW |
| 0322 | 2-03633 | RONDELLA D.10 | WASHER |
| 0323 | 2-02070 | DADO M10 | NUT |
| 0324 | 4-329843 | PIATTO DI RISCONTRO | PLATE |
| 0325 | 4-116471 | INSERTO SUP/INFERIORE | INSERT |
| 0326 | 4-116469 | RASAMENTO PATTINO IMM | SLIDE SHIM IMM |
| 0327 | 4-116470 | RASAMENTO PATTINO 0,3 MM | SLIDE SHIM 0,3MM |
| 0328 | 5-105621 | PATTINO INFERIORE CON INSERTO | LOWER SLIDE |
| 0329 | 5-105622 | PATTINO SUPERIORE CON INSERTI | UPPER SLIDE |
| 0330 | 2-01073 | VITE 1/2F M10X40 | SCREW |
| 0331 | 4-116476 | INSERTO INTERMEDIO | INSERT |



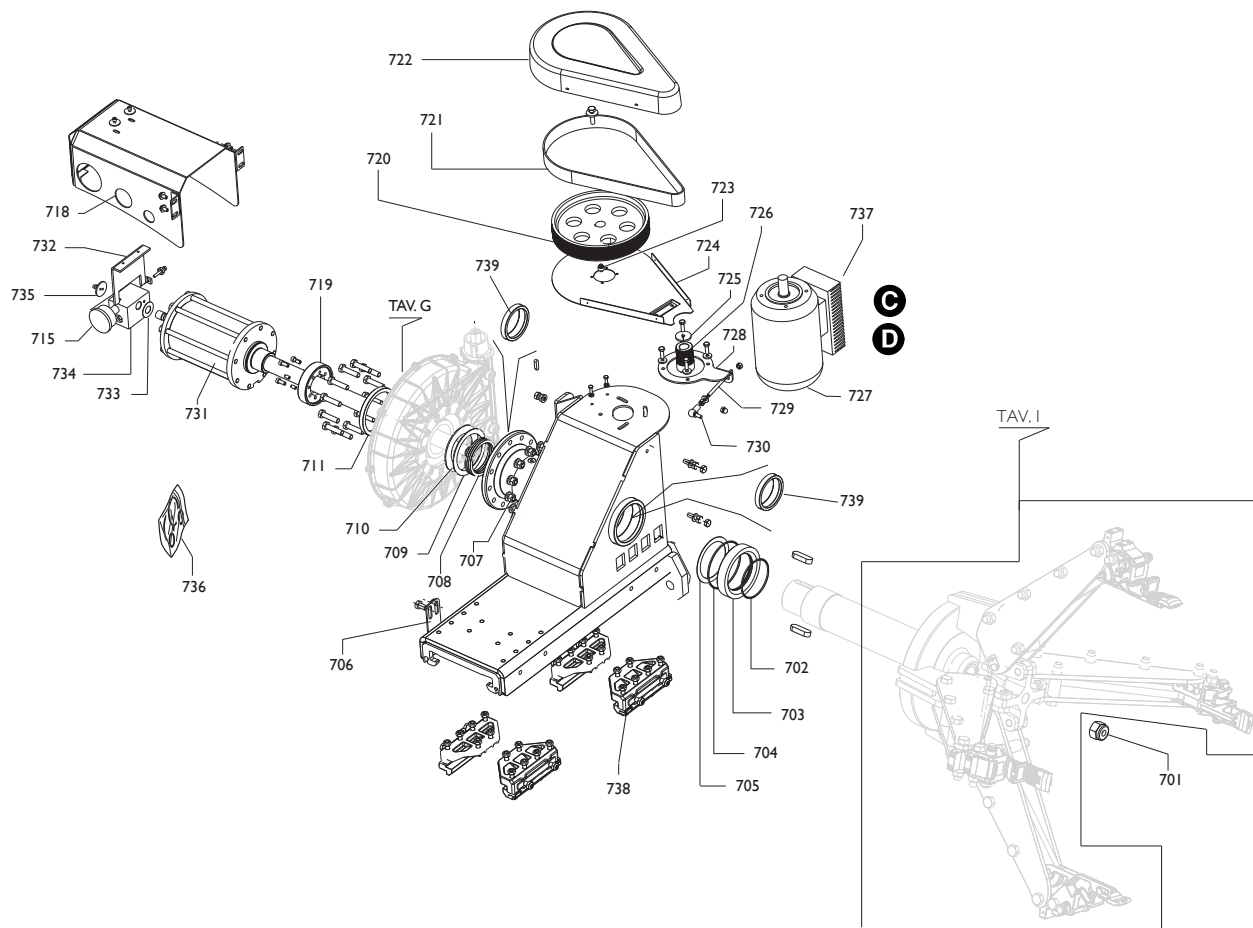
| | | | |
|------|-------------|------------------------------------|--------------|
| 9450 | 5-103521 | BR.UTENSILE CPL. | TOOL ARM |
| 0401 | 4-329906 | LAMIERA CARTER | CASING |
| 0402 | 4-330119/90 | TUBO DRIITTO | HOSE |
| 0403 | 4-329799 | CAMMA MICRO | MICRO CAM |
| 0404 | 4-329802 | SNODO M20 | JOINT |
| 0405 | 4-329797 | STAFFA | BRACKET |
| 0406 | 4-329798 | MICRO | MICRO |
| 0407 | 5-300835/90 | CILINDRO UNGHIA | CYLINDER |
| 0408 | 4-330075 | DISTANZIALE | SPACER |
| 0409 | 4210089 | RACCORDO | CONNECTOR |
| 0410 | 4-330118/90 | TUBO | HOSE |
| 0411 | 454414 | VALVOLA | VALVE |
| 0412 | 5-104234 | ALBERO UTENSILE | TOOL SHAFT |
| 0413 | 4-329819 | PERNO UTENSILE | PIN |
| 0414 | 4-329640 | LAMIERA DI FERMO | SLIDE |
| 0415 | 3-80101 | BOCCOLA | BUSHING |
| 0416 | 3-80150 | BOCCOLA | BUSHING |
| 0417 | 4-329746 | TASSELLO UNGHIA | SLIDE |
| 0418 | 4-329821 | PERNO UNGHIA | PIN |
| 0419 | 5-103294 | UNGHIA+BOCCOLE | TOOL+BUSHING |
| 0420 | 4-329820 | PERNO CIL.UNGHIA | PIN |
| 0421 | 2-71527 | DADO M20 | NUT |
| 0422 | 4-329822 | PERNO SUP. | PIN |
| 0423 | 4-108814 | PERNO DISCO | PIN |
| 0424 | 451144 | RONDELLA | WASHER |
| 0425 | 5-300837/90 | CILINDRO DISCO STALL. | CYLINDER |
| 0426 | 298115 | KIT GUARNIZ.CIL.DISCO STALL.(0425) | GASKETS |
| 0426 | 298124 | KIT GUARNIZ.CIL.UNGHIA(0407) | GASKETS |
| | 4-330051 | CAVO MICRO UTENSILE | CABLE |




| | | | |
|------|----------|---------------------------|-----------------|
| 9550 | 5-103295 | GR.BRACCIO STALL.+BOCCOLE | ARM+BUSHING |
| 0501 | 5-103296 | SUPPORTO+BOCCOLE | SUPPORT+BUSHING |
| 0502 | 4-329814 | DISCO STALL. | DISK |
| 0503 | 3-01421 | BOCCOLA | BUSHING |
| 0504 | 4-326405 | RONDELLA | WASHER |
| 0506 | 4-329813 | RONDELLA | WASHER |
| 0507 | 3-80152 | OR | OR |
| 0508 | 2-80165 | VITE | SCREW |
| 0509 | 3-01158 | BOCCOLA | BUSHING |

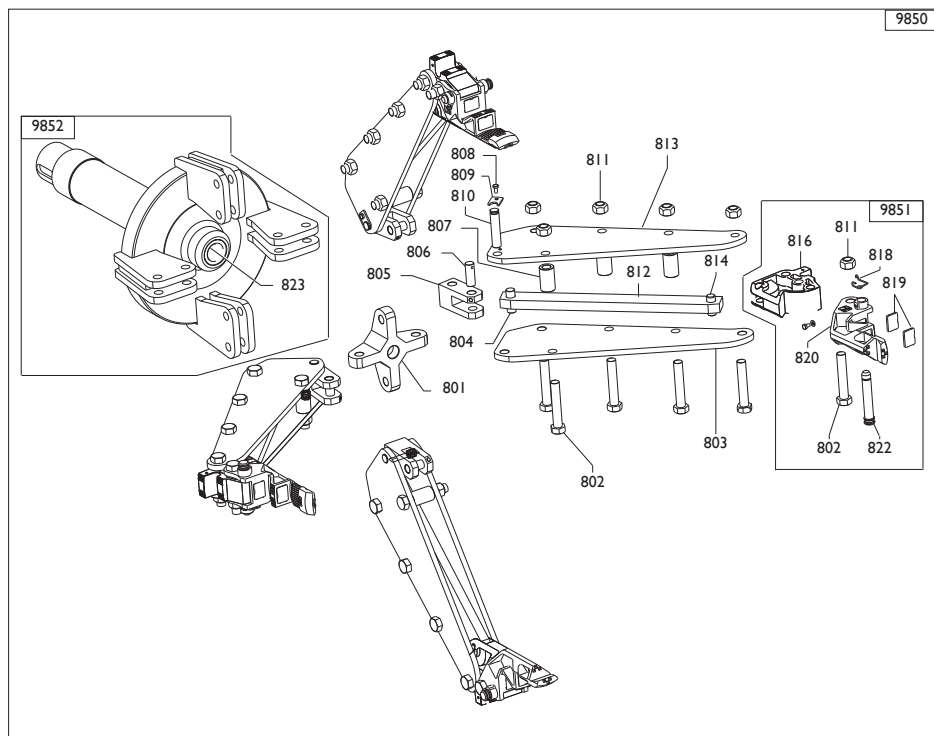


| | | | |
|------|----------|---------------------|----------|
| 9650 | 5-103289 | RIDUTTORE | GEAR BOX |
| 0601 | 354213 | COPERCHIO RIDUTTORE | CASING |
| 0602 | 4-329053 | GUARNIZIONE | GASKET |
| 0603 | 341541 | RUOTA ELICOIDALE | GEAR |
| 0604 | 4-329636 | SCATOLA RID. | BOX |
| 0605 | 4-329637 | GUARNIZIONE | GASKET |
| 0606 | 2-00716 | LINGUETTA | TANG |
| 0607 | 354881 | BOCCOLA | BUSCHING |
| 0608 | 354876 | FONDELLO ATT.CARTER | CASING |
| 0609 | 4-329212 | GUARNIZIONE | GASKET |
| 0610 | 2-02213 | CUSCINETTO | BEARING |
| 0611 | 5-327657 | KIT VITE SENZA FINE | SCREW |
| 0612 | 2-01035 | CUSCINETTO ASSIALE | BEARING |
| 0614 | 4-329224 | RONDELLA | WASHER |
| 0616 | 354875 | FONDELLO ASSE VITE | CASING |
| 0617 | 2-91971 | DADO | NUT |
| 0618 | 317281 | RONDELLA | WASHER |
| 0619 | 2-01034 | CUSCINETTO | BEARING |
| 0620 | 454882 | OR | OR |

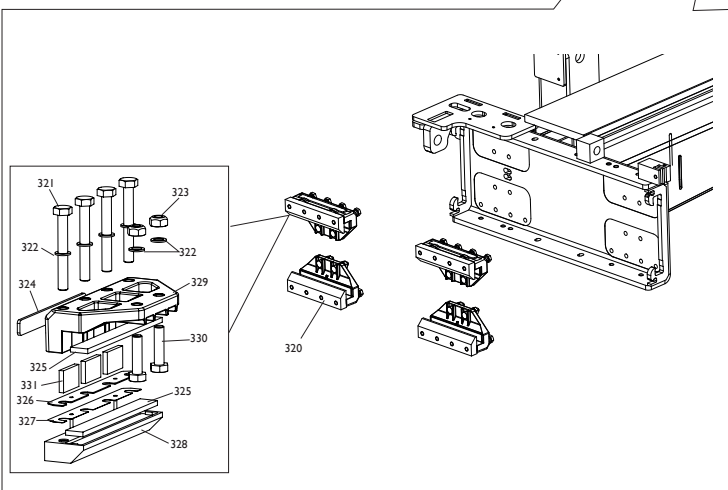
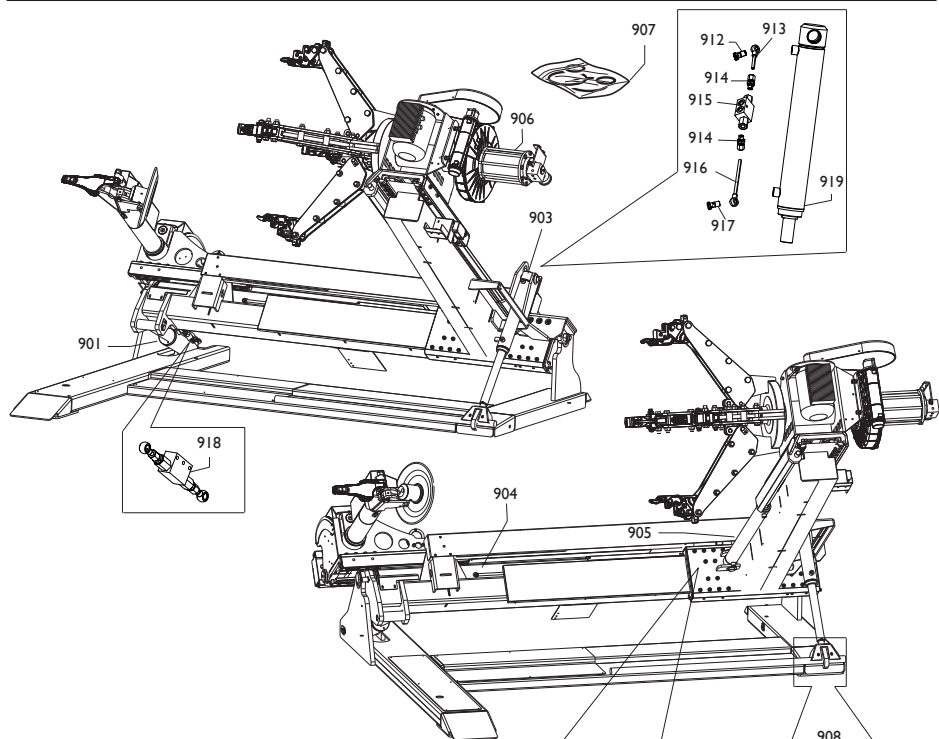


| | | | |
|--|--------------|------------------------|---------------|
|  | MONSTER AGTT | Carrello autocentrante | TAV.H - 01/13 |
|--|--------------|------------------------|---------------|

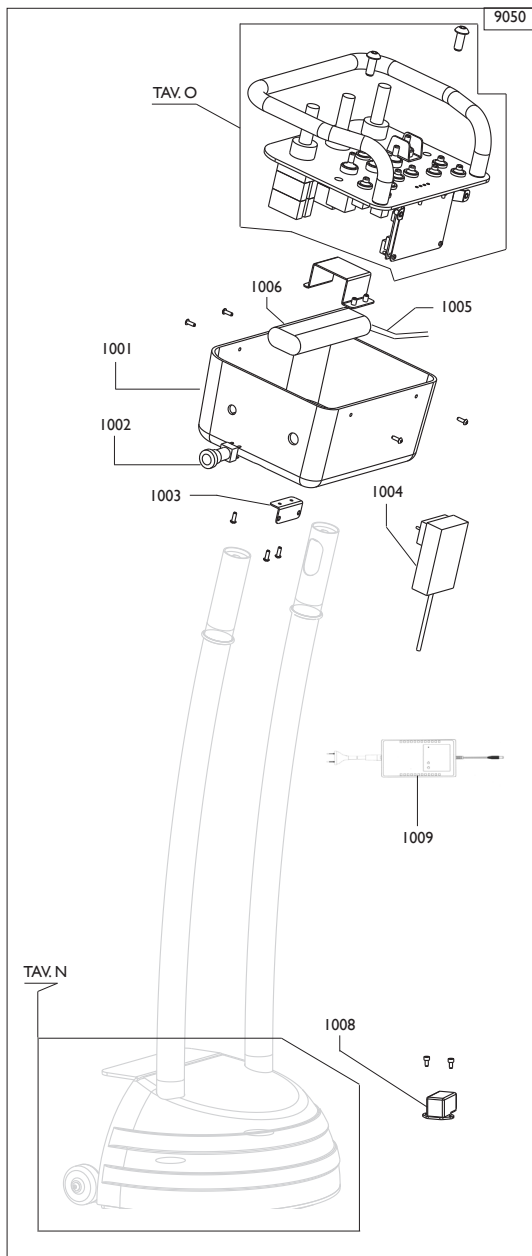
| | | | |
|---|-----------------|---------------------------------------|----------------|
| 0701 | 2-03592 | DADO M27 | NUT |
| 0702 | 85604400 | OR | OR |
| 0703 | 4-329662 | ANELLO DISTANZIALE | SPACER |
| 0704 | 85604487 | OR | OR |
| 0705 | 4-329773 | RONDELLA D.125X100.2X1 | WASHER |
| 0706 | 4-329953/16 | STAFFA COLLEG.FILO | BRACKET |
| 0707 | 422255 | DADO M12 | NUT |
| 0708 | 4-329776 | RONDELLA D.99.5X83.5X0.2 | WASHER |
| 0709 | 4-329775 | RONDELLA BRONZO D.127X100.5X2 | WASHER |
| 0710 | 4-329774 | RONDELLA D.127X83.2X3 | WASHER |
| 0711 | 453350 | ANELLO DI TENUTA | GASKET |
| 0715 | 3-00491 | MANOMETRO | PRESSURE GAUGE |
| 0718 | 4-329631 | CARTER | CASING |
| 0719 | 353343 | FLANGIA BLOCCAGGIO | FLANGE |
| 0720 | 4-329616 | PULEGGIA CONDOTTA | PULLEY |
| 0721 | 4-329615 | CINGHIA | BELT |
| 0722 | 4-329613 | CARTER CINGHIA | CASING |
| 0723 | 361219 | DISTANZIALE FORATO | SPACER |
| 0724 | 4-329614 | LAMIERA SUPP.CARTER | CASING |
| 0725 | 337622 | RONDELLA | WASHER |
| 0726 | 4-329617 | PULEGGIA MOTRICE | PULLEY |
| 0727 | 4-329778 | MOTOINVERTER 400/3/50-60hz | MOTOINVERTER |
| 0728 | 4-329611 | LAMIERA MOTORE | SUPPORT |
| 0729 | 4-329610 | BARRA FILETTATA | BAR |
| 0730 | 3-02981 | SNODO SFERICO | JOINT |
| 0731 | 5-103488 | CILINDRO AUTOC.D.130 | CYLINDER |
| 0732 | 4-109780 | FERMO RACCORDO | BRACKET |
| 0733 | 33020103 | DISTANZIALE | WASHER |
| 0734 | 32019618 | DISTRIBUTORE | DISTRIBUTOR |
| 0735 | 34019841 | RONDELLA | WASHER |
| 0736 | 4-112892 | KIT GUARNIZ.CIL.AUTOCENTRANTE | GASKETS KIT |
| 0737 | 4-115407 | SK MOTOINVERTER | BOARD |
| 0738 | 5-105631 | PATTINO CARRELLO AUTOCENTRANTE | SLIDE |
| 0739 | 3-01238 | BOCCOLA D.100X60 | BUSH |
|  | 4-109381 | CAVO ALIMENT.MOTORE AUTOCENTRANTE | CABLE |
|  | 4-330058 | CAVO CONTROLLO MOTORE AUTOCENTRANTE | CABLE |



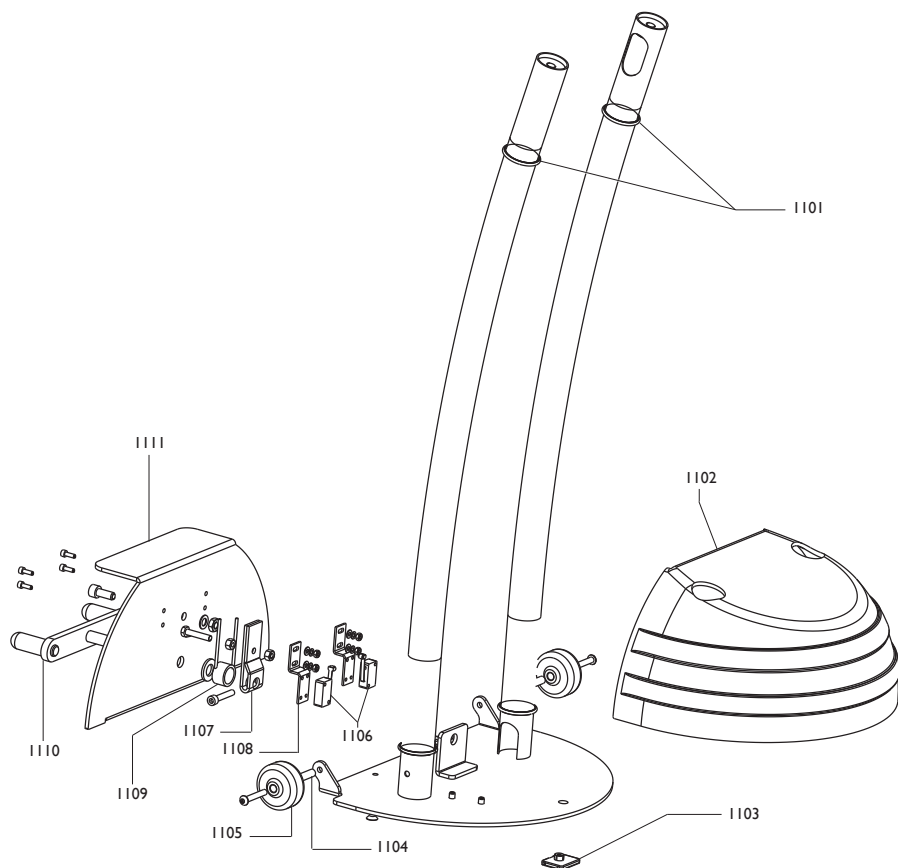
| | | | |
|------|----------|-----------------------|---------|
| 9850 | 5-300805 | MORSA AUTOCENTRANTE | SPINDLE |
| 0801 | 4-329661 | CROCIERA | CROSS |
| 0802 | 2-03580 | VITE | SCREW |
| 0803 | 4-329652 | LAMIERA AUTOC.FORATA | CASING |
| 0804 | 4-329639 | SPINOTTO | SCREW |
| 0805 | 4-329658 | BIELLA CORTA | SLAB |
| 0806 | 4-329650 | SPINOTTO FORATO | SCREW |
| 0807 | 4-329642 | DISTANZIALE | SPACER |
| 0808 | 2-00360 | VITE | SCREW |
| 0809 | 4-329640 | LAMIERA DI FERMO | CASING |
| 0810 | 4-329641 | PERNO LUNGO | PIN |
| 0811 | 424974 | DADO | NUT |
| 0812 | 4-329654 | BIELLA LUNGA | SLAB |
| 0813 | 4-329659 | LAMIERA AUT.FILETT. | CASING |
| 0814 | 4-329651 | SPINOTTO GRIFFA FISSA | SCREW |
| 9851 | 5-300845 | GR.GRIFFA 58" | BLOCK |
| 0811 | 424974 | DADO | NUT |
| 0816 | 4-329755 | GRIFFA FISSA | BLOCK |
| 0818 | 4-329766 | MOLLA | SPRING |
| 0819 | 4-329541 | TASSELLO | BLOCK |
| 0820 | 4-329756 | GRIFFA | BLOCK |
| 0822 | 4-329657 | PERNO | PIN |
| 0802 | 2-03580 | VITE | SCREW |
| 9852 | 5-103290 | MANDRINO+BOCCOLA | SPINDLE |
| 0823 | 438592 | BRONZINA | BRASS |



| | | | |
|-------------|-----------------|--------------------------------------|-------------------------|
| 0901 | 5-300820/90 | CILINDRO D.80 CORSA 198 | CYLINDER |
| 0903 | 5-104907 | CILINDRO D.55 CORSA 90+VALVOLA | CYLINDER |
| 0904 | 5-300821/90 | CILINDRO D.85 CORSA 1060 | CYLINDER |
| 0905 | 5-104183 | CILINDRO D.55 CORSA 670 | CYLINDER |
| 0906 | 5-103488 | CILINDRO AUTOCENTRANTE | CYLINDER |
| 0907 | 298118 | KIT GUARNIZ.CIL.D.80 CORSA 198 | GASKETS |
| 0907 | 298119 | KIT GUARNIZ.CIL.D.55 CORSA 90 | GASKETS |
| 0907 | 298120 | KIT GUARNIZ.CIL.D.85 CORSA 1060 | GASKETS |
| 0907 | 298121 | KIT GUARNIZ.CIL.D.55 CORSA 670 | GASKETS |
| 0907 | 4-112892 | KIT GUARNIZIONI CIL. AUTOCENTRANTE | GASKET |
| 0908 | 4-329705 | PERNO PATTINO | PIN |
| 0909 | 4-115275 | PATTINO | SLIDE |
| 0910 | 4-329701 | ATTACCO PATTINO | SUPPORT |
| 0911 | 2-71520 | DADO | NUT |
| 0912 | 4-330135 | VITE FORATA 1/4+STROZZ.D.1,25 | HYD.SCREW |
| 0913 | 4-115212 | TUBO CON OCCHIO L.68 | HYDRAULIC HOSE |
| 0914 | 4210089 | RACCD. 1/4 | CONNECTION |
| 0915 | 454414 | VALVOLA DI BLOCCO | VALVE |
| 0916 | 4-404675 | TUBO CON OCCHIO L.142,5 | HYDRAULIC HOSE |
| 0917 | 424650 | VITA CAVA 1/4 | HYD.SCREW |
| 0918 | 4-330120 | VALVOLA CIL.SOLL.TRAVE | VALVE |
| 0919 | 5-300818/90 | CILINDRO D.55 CORSA 90 | CYLINDER |
| 0320 | 5-105617 | PATTINO | SLIDE |
| 0321 | 2-03577 | VITE 1/2F M10X80 | SCREW |
| 0322 | 2-03633 | RONDELLA D.10 | WASHER |
| 0323 | 2-02070 | DADO M10 | NUT |
| 0324 | 4-329843 | PIATTO DI RISCONTRO | PLATE |
| 0325 | 4-116471 | INSERTO SUP/INFERIORE | INSERT |
| 0326 | 4-116469 | RASAMENTO PATTINO IMM | SLIDE SHIM IMM |
| 0327 | 4-116470 | RASAMENTO PATTINO 0,3 MM | SLIDE SHIM 0,3MM |
| 0328 | 5-105621 | PATTINO INFERIORE CON INSERTO | LOWER SLIDE |
| 0329 | 5-105622 | PATTINO SUPERIORE CON INSERTI | UPPER SLIDE |
| 0330 | 2-01073 | VITE 1/2F M10X40 | SCREW |
| 0331 | 4-116476 | INSERTO INTERMEDIO | INSERT |

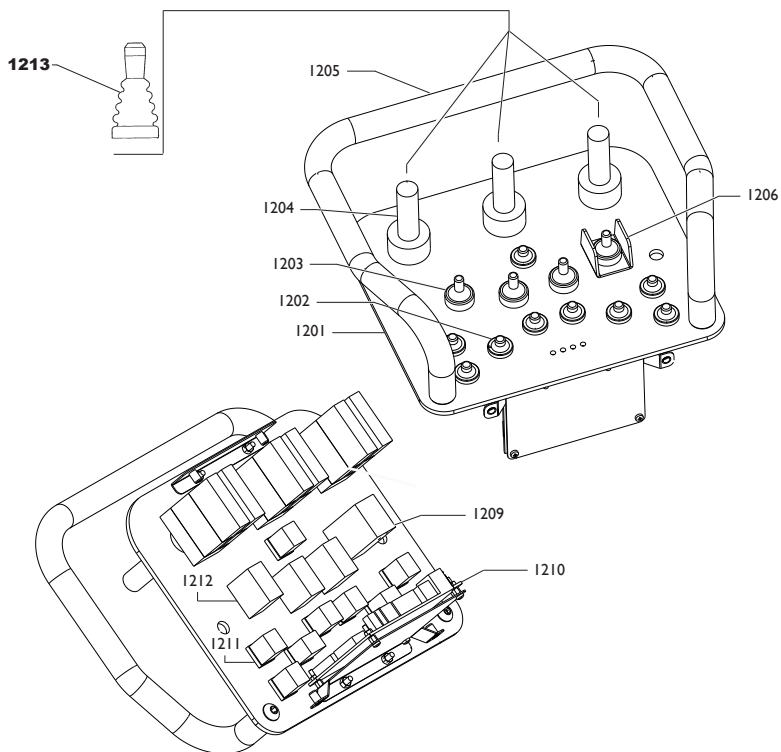


| | | | |
|------|-------------|--------------------------------|-------------|
| 9050 | 5-103088 | GR.MANIPOLATORE RX CPL. | MANIPULATOR |
| 1001 | 4-108729 | COVER PLANCIA | COVER |
| 1002 | 5-100619 | PULSANTE ROSSO | RED BUTTON |
| 1003 | 4-108727/90 | SUPPORTO RADIO | SUPPORT |
| 1004 | 5-300501 | RADIO MODEM | RADIO MODEM |
| 1005 | 4-327146 | CAVO CARICA BATTERIA | CABLE |
| 1006 | 4-330049 | BATTERIA 7,2V 3800mA | BATTERY |
| 1008 | 4-330060 | CAVO SERIALE INTERNO | CABLE |
| 1009 | 4-330050 | CARICABATTERIE 100-240V 1200ma | CABLE |

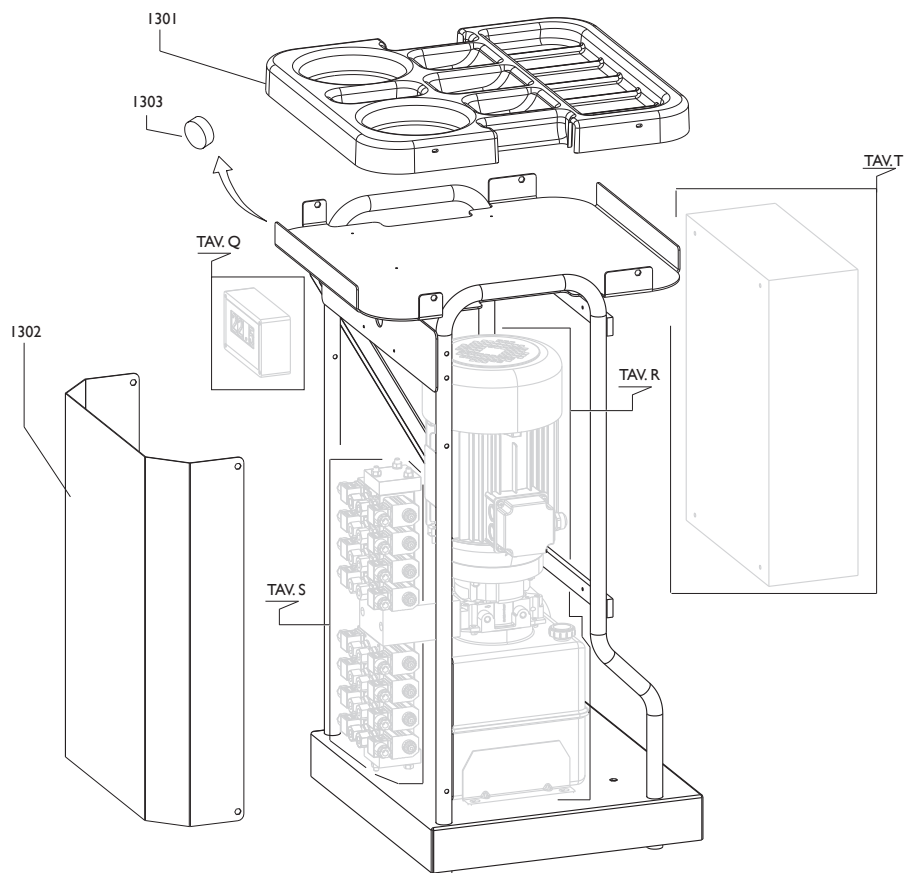


| | | |
|------|-------------|-------------------|
| 1101 | 433248 | OR |
| 1102 | 4-108751 | COVER PEDALI |
| 1103 | 4-329541 | TASSELLO |
| 1104 | 4-108753 | TUBO GUIDA |
| 1105 | 3-03067 | RUOTA |
| 1106 | 440874 | MICRO |
| 1107 | 317491 | LEVA |
| 1108 | 355786 | STAFFA |
| 1109 | 401270 | MOLLA |
| 1110 | 4-108754/90 | PEDALE |
| 1111 | 4-108752 | PROTEZIONE PEDALE |

| |
|------------|
| OR |
| COVER |
| SLIDE |
| GUIDE HOSE |
| WHEEL |
| MICRO |
| LEVER |
| BRACKET |
| SPRING |
| PEDAL |
| PROTECTION |



| | | | |
|------|----------|----------------------------------|---------------|
| 1201 | 4-108730 | PIASTRA CONSOLE | SLAB |
| 1202 | 3-03086 | PROT.IN GOMMA X PULSANTE | PROTECTION |
| 1203 | 3-03085 | PROT.IN GOMMA | PROTECTION |
| 1204 | 3-03079 | MANIPOLATORE CPL. | MANIPULATOR |
| 1205 | 4-108735 | TUBO CONSOLE | CONSOLE HOSE |
| 1206 | 340747 | PROTEZIONE | PROTECTION |
| 1209 | 3-03084 | INTERR.BIPOLARE | SWITCH |
| 1210 | 4-108731 | SCHEDA CPU | P.C.BOARD CPU |
| 1211 | 3-03083 | PULSANTE N.A | BUTTON |
| 1212 | 3-03082 | INTERR. A LEVA | SWITCH |
| 1213 | 3-03143 | PROTEZIONE IN GOMMA MANIPOLATORE | PROTECTION |

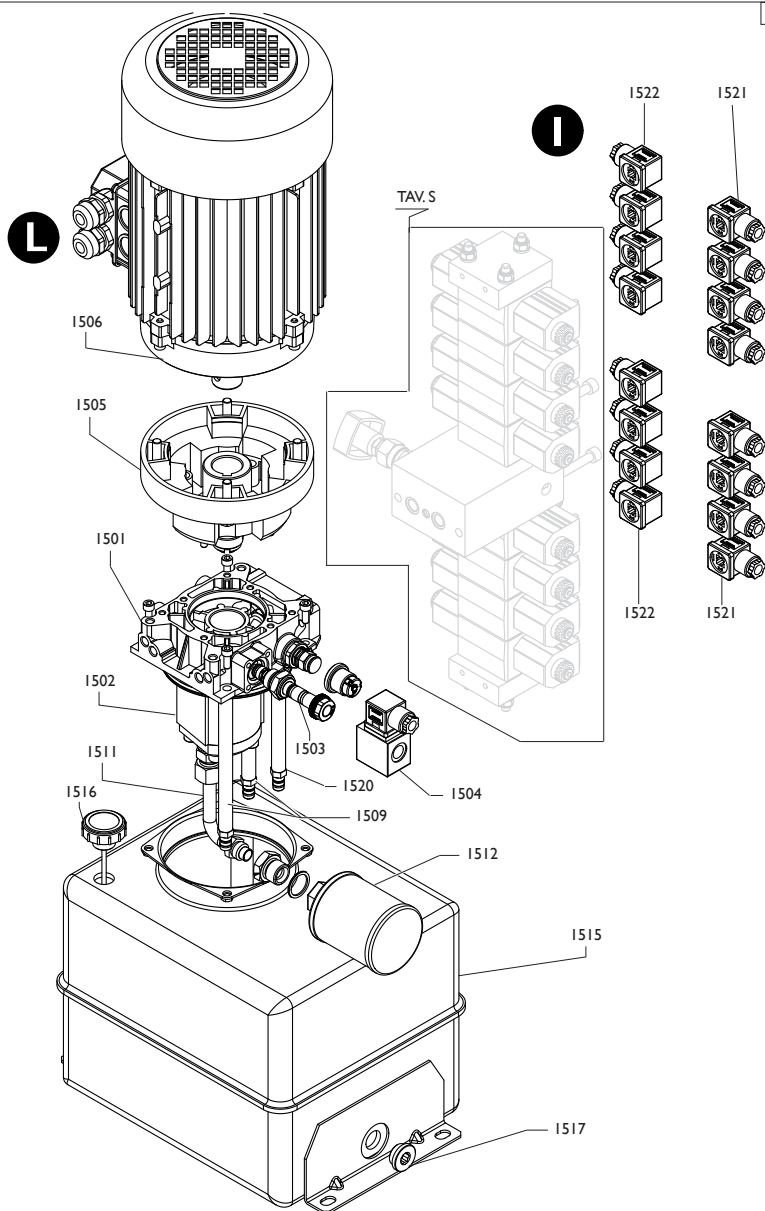




| | | |
|------|----------|------------------|
| 1301 | 4-106002 | PIANALE |
| 1302 | 4-330035 | LAMIERA |
| 1303 | 3-03078 | SEGNALE ACUSTICO |

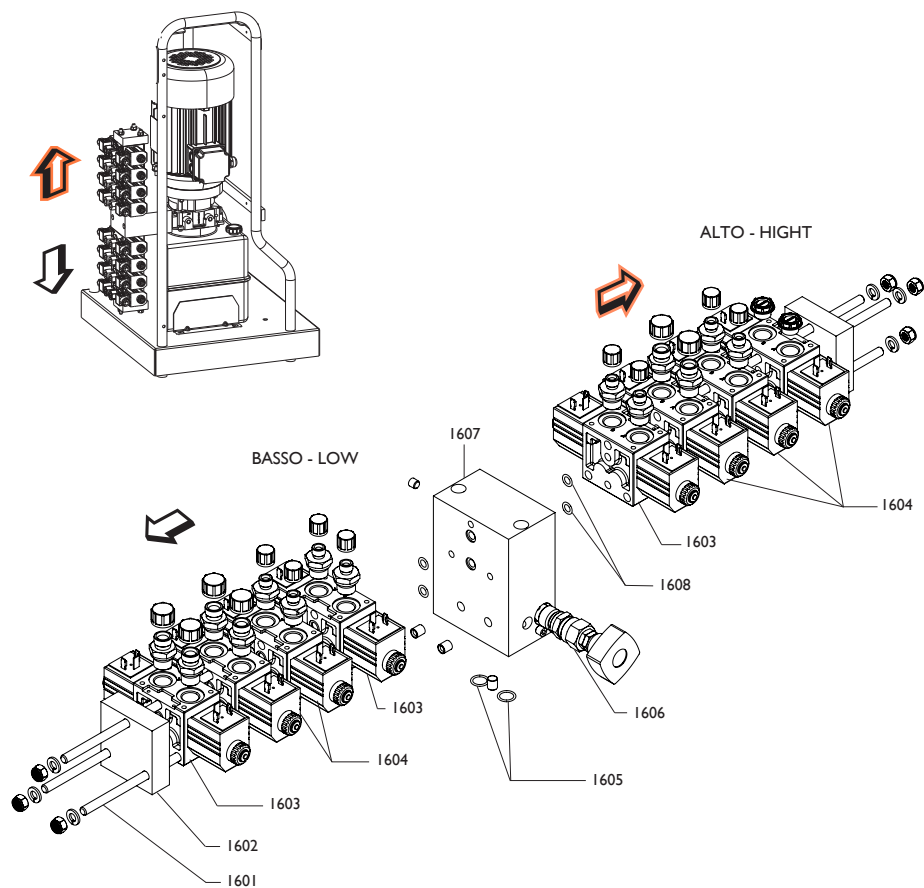
| |
|------------|
| SUPPORT |
| PROTEZIONE |
| ALARM |



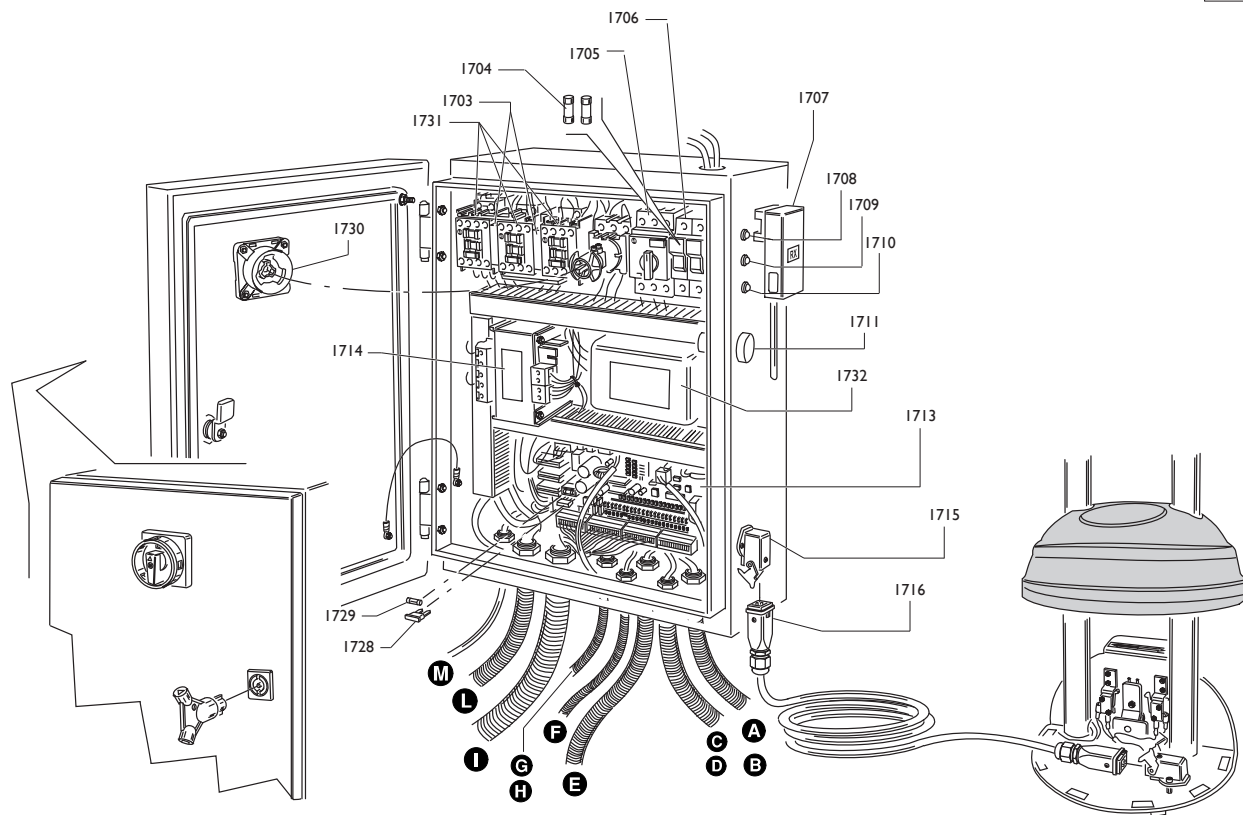
9065



| | | | |
|---|----------|--------------------------------|------------------|
| 9065 | 5-300863 | CENTRALINA IDR.400-230V/3/50hz | HYDR.UNIT |
| | 5-300870 | CENTRALINA IDR.400-230V/3/60hz | HYDR.UNIT |
| 1501 | 4-109301 | COLLETTORE | MANIFOLD |
| 1502 | 4-109302 | POMPA 7.4 cc+VITE M8x110 50hz | PUMP |
| | 4-109303 | POMPA 6.1 cc+VITE M8x105 60hz | PUMP |
| 1503 | 4-109304 | ELETTROVALVOLA | SOLENOIDVALVE |
| 1504 | 4-109305 | SOLENOIDE+CONNETTORE | SOLENOID+CONNEC. |
| 1505 | 4-109306 | KIT TRASCINAMENTO | COUPLING |
| 1506 | 4-109307 | MOTORE EL.400-230/3/50-60hz | MOTOR |
| 1509 | 86990239 | TUBO SCARICO | HOSE |
| 1511 | 4-109308 | TUBO ASPIRAZIONE | HOSE |
| 1512 | 4-109309 | FILTRO | FILTER |
| 1515 | 4-109310 | SERBATOIO 15LT | TANK |
| 1516 | 4-109311 | TAPPO CARICO OLIO | HOSE |
| 1517 | 3-02275 | TAPPO SCARICO | HOSE |
| 1520 | 86990279 | TUBO SCARICO | HOSE |
| 1521 | 418062 | CONNETTORE NERO | BLACK CONNECTOR |
| 1522 | 424693 | CONNETTORE GRIGIO | GRAY CONNECTOR |
|  | 4-109382 | CAVO ELETTROVALVOLE | CABLE |
|  | 4-109383 | CAVO MOTORE CENTRALINA | CABLE |



| | | | |
|------|----------|---------------------|---------------|
| I601 | 4-109300 | TIRANTE M8x240 | ROD |
| I602 | 86990345 | PIASTRA DI CHIUSURA | PLATE |
| I603 | 86990340 | ELETTROVALVOLA 24V | SOLENOIDVALVE |
| I604 | 86990341 | ELETTROVALVOLA 24V | SOLENOIDVALVE |
| I605 | 417749 | OR | OR |
| I606 | 86990350 | VALVOLA PILOTATA | VALVE |
| I607 | 4-109299 | BLOCCO+VALVOLA | BLOCK+VALVE |
| I608 | 423078 | OR | OR |

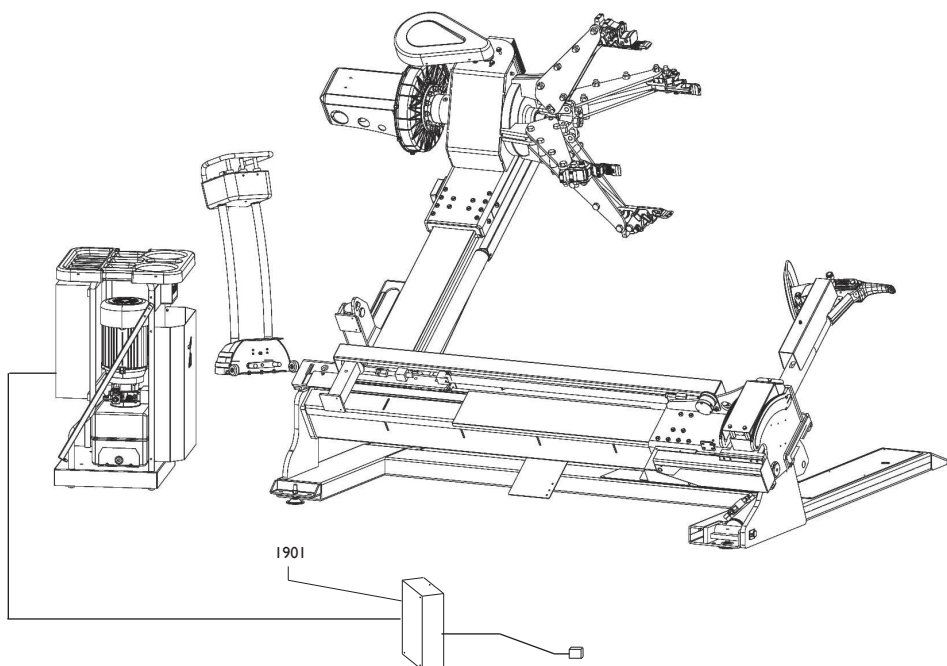


| | | | |
|------|----------|---------------------------------|----------------|
| 9070 | 5-300864 | IMPIANTO EL. 230-400V/3/50-60hz | EL.PLANT |
| 1703 | 3-03075 | INTERBLOCCO MECCANICO | BLOCK |
| 1704 | 3-03077 | FUSIBILE 10,3x38 1A | FUSE |
| 1705 | 3-80143 | TERMICA 6,3-10A | CUT OUT |
| 1706 | 84990781 | PORTAFUSIBILE 2POLI | FUSE CARRIER |
| 1707 | 5-300502 | RADIOMODEM | RADIOMODEM |
| 1708 | 4-330057 | LED VERDE | GREEN LED |
| 1709 | 4-327260 | LED BIANCO | WHITE LED |
| 1710 | 4-330056 | LED ROSSO | RED LED |
| 1711 | 3-80144 | SPIA LUMINOSA+LED | PILOT LAMP+LED |
| 1713 | 4-330064 | SCHEDA CPU | P.CP BOARD CPU |
| 1714 | 4-330040 | TRASFORMATORE | TRANSFORMER |
| 1715 | 4-330045 | CAVO SERIALE | CABLE |
| 1716 | 4-330069 | CAVO EMERGENZA | CABLE |
| 1728 | 4-109327 | FUSIBILE 10A | FUSE |
| 1729 | 84800202 | FUSIBILE RIT.2A | FUSE |
| 1730 | 3-00156 | INTERRUTTORE GENERALE | SWITCH |
| 1731 | 3-80146 | TELERUTTORE 24VAC-16A | REMOTE CONTROL |
| 1732 | 3-03272 | FILTRO 10A | FLTER |

| | | | |
|----------|----------|-----------------------------|-------|
| A | 4-330053 | CAVO COLL.POTENZIOMETRO | CABLE |
| B | 4-108976 | CAVO PROX. | CABLE |
| C | 4-109381 | CAVO ALIM.MOT.AUTOCENTRANTE | CABLE |
| D | 4-330058 | CAVO CONTROLLO MOT.AUTOC. | CABLE |
| E | 4-330063 | CAVO COLL.SENSORE LASER | CABLE |
| F | 4-330055 | CAVO COLL.CPU/DISPLAY | CABLE |
| G | 4-108975 | CAVO MICRO POS.DISCO STALL. | CABLE |
| H | 4-330051 | CAVO MICRO UTENSILE | CABLE |
| I | 4-109382 | CAVO ELETTROVALVOLE | CABLE |
| L | 4-109383 | CAVO MOT.CENTRALINA | CABLE |
| M | 4-109384 | CAVO RETE | CABLE |



| | | | |
|------|-------------|--------------------------------|----------|
| 0211 | 5-300284/90 | CILINDRO ROT.UTENSILE | CYLINDER |
| 0308 | 5-103303 | CILINDRO ALZA BRACCIO UTENSILE | CYLINDER |
| 0407 | 5-300835/90 | CILINDRO UNGHIA | CYLINDER |
| 0425 | 5-300837 | CILINDRO DISCO STALL. | CYLINDER |
| 0712 | 5-103488 | CILINDRO AUTOCENTRANTE | CYLINDER |
| 0901 | 5-300820/90 | CILINDRO D.80 | CYLINDER |
| 0903 | 5-104907 | CILINDRO D.55+VALVOLA | CYLINDER |
| 0904 | 5-300821/90 | CILINDRO D.80 | CYLINDER |
| 0905 | 5-104183 | CILINDRO D.55 | CYLINDER |
| 1801 | 4-330092 | TUBO CILINDRO UNGHIA | HOSE |
| 1802 | 4-330093 | TUBO CILINDRO DISCO UNGHI | HOSE |
| 1803 | 4-330094 | TUBO CIL.DISCO STALL. | HOSE |
| 1804 | 4-330095 | TUBO UTENSILE | HOSE |
| 1807 | 4-330098 | TUBO CIL.SOLL. | HOSE |
| 1808 | 4-330099 | TUBO CIL.SOLL.PRINC. | HOSE |
| 1809 | 4-330100 | TUBO CIL.TRASLAUTOC. | HOSE |
| 1810 | 4-330101 | TUBO CIL.TRASLAUTOC. | HOSE |
| 1811 | 4-330102 | TUBO AUTOCENTRANTE | HOSE |
| 1812 | 4-330103 | TUBO CIL.SOLL.BRACCIO UT. | HOSE |
| 1813 | 4-330104 | TUBO CIL.SOLL.BRACCIO UT. | HOSE |
| 1814 | 4-330105 | TUBO CILINDRO ROTAZIONE | HOSE |
| 1815 | 4-330106 | TUBO VALVOLA DI BLOCCO DISCO | HOSE |
| 1816 | 4-113309 | TUBO CIL.AUTOCENTRANTE | HOSE |



1901

5-103237

AUTOTRASFORMATORE

AUTOTRANSFORMER



2000 4-329949

PROT. CATENA 15 MAGLIE

PROTECTION

2001 4-329946

PROT. CATENA 30 MAGLIE

PROTECTION

2002 4-329945

PROT. CATENA 20 MAGLIE

PROTECTION

2003 4-108995

GUAINA RTA PROT.TUBI L.1400MM

PROTECTION

2004 4-112704

GUAINA RTA PROT.TUBI L.100MM

PROTECTION

Il disegno è realizzato con tutti i particolari ma solo quelli codificati sono forniti come ricambi. L'Azienda si riserva la facoltà di apportare modifiche senza preavviso.



Via per Carpi, n°9 - 42015 Correggio (RE) ITALY
Tel. ++39 0522 639111 - Fax ++39 0522 639150
www.corgi.com - info@corgi.com

The drawing shows all parts but only the coded parts are supplied as spares. The Company reserves the right to make modifications without prior notice.