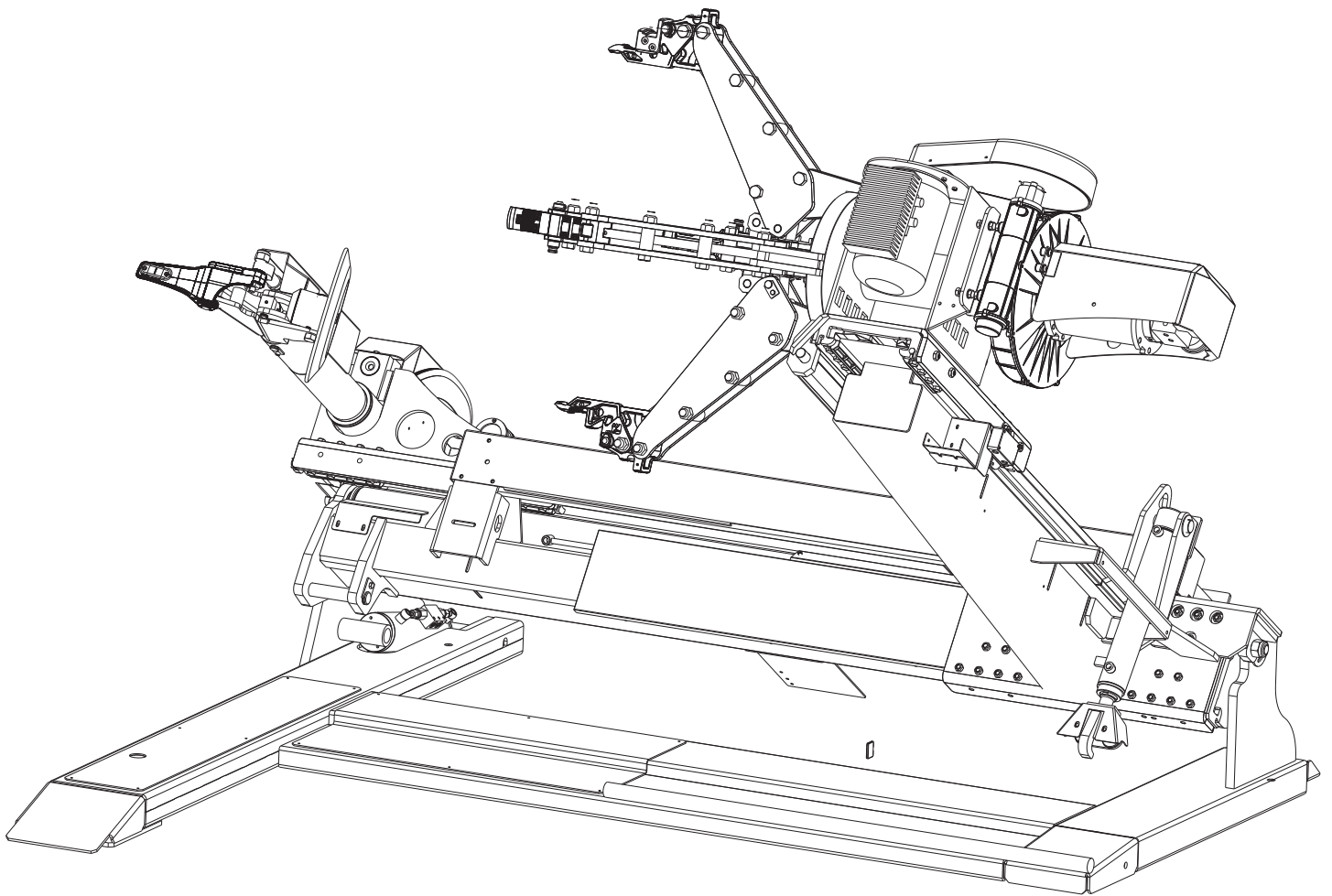


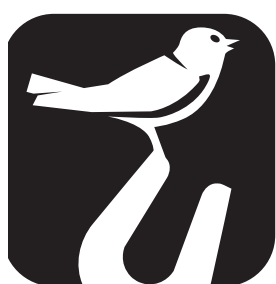
# MONSTER AGTT

Pezzi di ricambio / Spare parts list



Code: 4-329711F

Production date: 06 / 2014



# CORGI



**I**

**Sul presente documento sono stati evidenziati con colore grigio i ricambi consigliati e indicati in grassetto i codici che sono variati rispetto a quelli riportati nella precedente versione del 01/13**

**EN**

**In this document, the recommended spare parts have been highlighted in gray, while in bold you find those codes which are different if compared with the previous version dated 01/13**

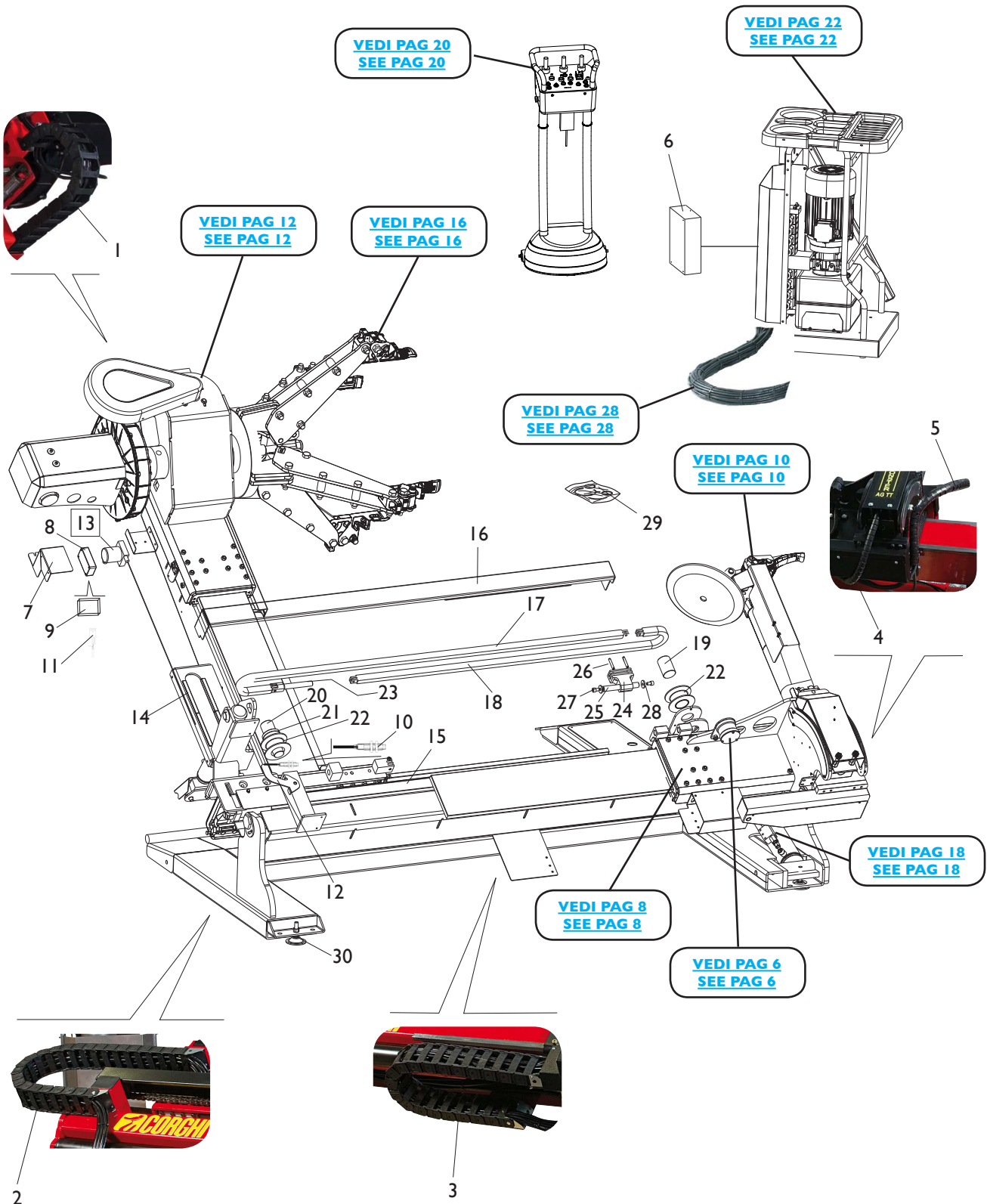
**DE**

**Im vorliegenden Dokument wurden die empfohlenen Ersatzteile in grauer Farbe hervorgehoben; die Teilenummern in Fettdruck haben sich beziehend auf die vorherige Version vom 01/13 geändert.**

**FR**

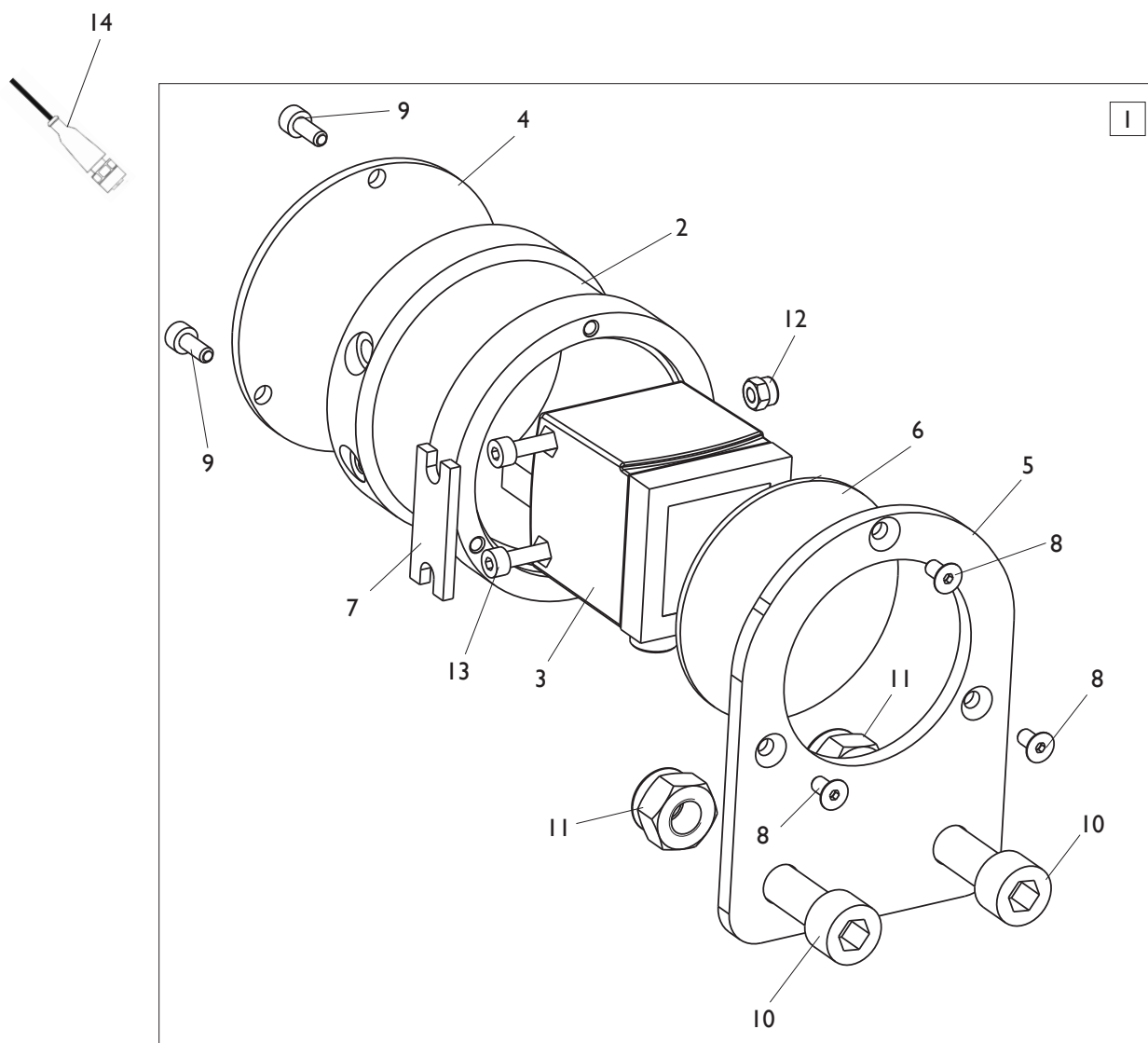
**Dans ce document, les pièces de rechange préconisées sont soulignées en gris, tandis que les références différentes par rapport à la version précédente du 01/13 sont en gras**

# COMPLESSIVO OVERALL



Rif. Ref.	Codice Code	Descrizione	Description
1	4-329949	PROTEZIONE CATENA 15 MAGLIE	CHAIN COVER
2	4-329946	PROTEZIONE CATENA 30 MAGLIE	CHAIN COVER
3	4-329945	PROTEZIONE CATENA 20 MAGLIE	CHAIN COVER
4	4-112704	GUAINA PROTEZIONE TUBI L.100mm	HOSE COVER L.100mm
5	4-108995	GUAINA PROTEZIONE TUBI L.1400mm	HOSE COVER L.1400mm
6	5-103237	AUTOTRASFORMATORE 400-230V / 7,5KW	AUTOTRANSFORMER 400-230V / 7,5KW
7	4-329954/16	CARTER PROTEZIONE SENSORE	SENSOR COVER
8	4-330076	SCATOLA SK BUFFER	P.C. BOARD BOX
9	4-330067	SK AMPLI. BUFFER	P.C. BOARD
10	4-108976	SENSORE PROXIMITY	PROXIMITY SENSOR
11	4-330053	CAVO POTENZIOMETRO	POTENTIOMETER CABLE
12	4-109324	SUPPORTO SENSORE PROXIMITY	PROXIMITY SENSOR SUPPORT
<b>13</b>	<b>5-105679</b>	<b>POTENZIOMETRO A FILO CPL.</b>	<b>POTENTIOMETR ASSEMBLY</b>
14	4-329543	PROFILO DI SCORRIMENTO	PROTECTION
15	4-108992	CARTER CILINDRO D.80	CYLINDER D.80 COVER
16	4-329683	CARTER PULEGGE	PULLEY COVER
<b>17</b>	<b>4-329681</b>	<b>CATENA SUPERIORE</b>	<b>UPPER CHAIN</b>
18	4-109357	CATENA INFERIORE	LOWER CHAIN
19	4-329692	PERNO PULEGGIA CORTO	SHORT PIN
20	4-329691	PERNO PULEGGIA LUNGO	LONG PIN
21	4-329694	RONDELLA D.10,1X70X11,5	WASHER D.10,1X70X11,5
22	5-103301	PULEGGIA CON BOCCOLA	PULLEY WITH BUSH
23	4-329689	FORCELLA TENDICATENA	SENSOR CHAIN
24	4-109345	SUPPORTO CATENA	CHAIN SUPPORT
25	4-109344	PERNO D.20X150	PIN D.20X150
26	4-109346	PERNO FISSAGGIO CATENA D.8	CHAIN PIN D.8
27	2-02007	VTCEI M8X20	HEXAGON SOCKET HEAD SCREW M8X20
28	3-00699	RONDELLA D.10,7X16,6X2,5	WASHER D.10,7X16,6X2,5
29	5-104994	KIT ADESIVI MONSTER AGTT	KIT ADHESIVE MONSETR AGTT
30	259031	PIEDE	FOOT

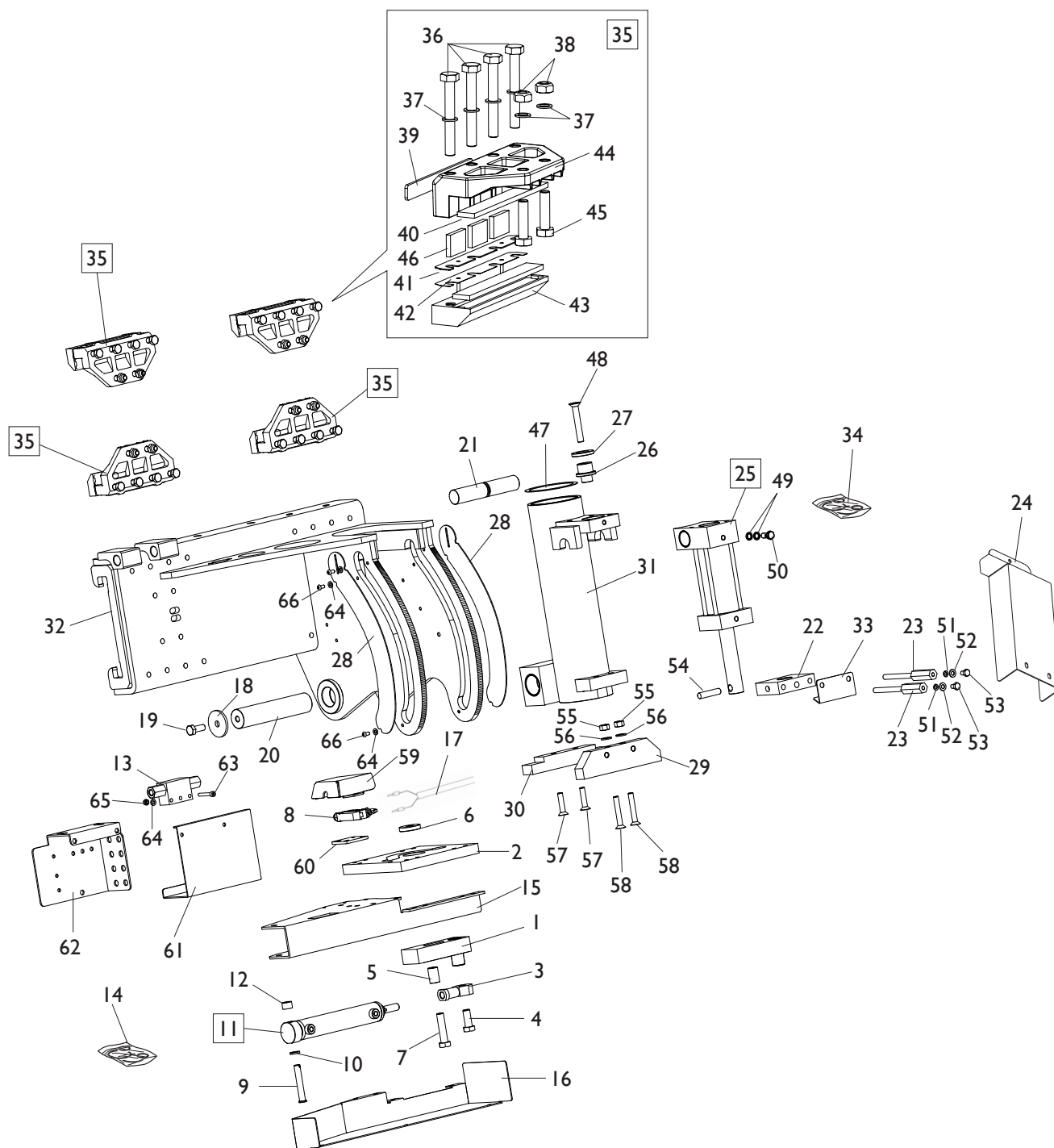
# GRUPPO LASER LASER GROUP



[TORNA AL COMPLESSIVO](#)  
[RETURNS TO OVERALL](#)

Rif. Ref.	Codice Code	Descrizione	Description
1	5-300867	GRUPPO LASER	LASER ASSEMBLY
2	4-330090	SUPPORTO LASER	LASER SUPPORT
3	4-330068	SENSORE OTTICO	OPTICAL SENSOR
4	4-330089	FONDELLO LASER	LASER PLATE
5	4-330086	LAMIERA CHIUSURA	LOCKING PLATE
6	4-330087	VETRO LASER	LASER GLASS
7	4-330088	SPESSORE LASER	LASER PLARE
8	<b>2-02389</b>	<b>VT SPEI M4X8</b>	<b>SCREW M4X8</b>
9	<b>2-00289</b>	<b>VT CEI M4X10</b>	<b>HEXAGON SOCKET HEAD SCREW M4X10</b>
10	<b>2-00330</b>	<b>VT CEI M10X30</b>	<b>HEXAGON SOCKET HEAD SCREW M10X30</b>
11	<b>2-01019</b>	<b>DADO ES.A. M10</b>	<b>AUTOLOCKING HEXAGON NUT M10</b>
12	<b>2-01018</b>	<b>DADO ES.A. M4</b>	<b>AUTOLOCKING HEXAGON NUT M4</b>
13	<b>2-02036</b>	<b>VT CEI M4X55</b>	<b>HEXAGON SOCKET HEAD SCREW M4X55</b>
14	4-330063	CAVO 4X0,22mm L.7 mt	CABLE 4X0,22mm L.7 mt

# GRUPPO CARRELLO CARRIAGE GROUP



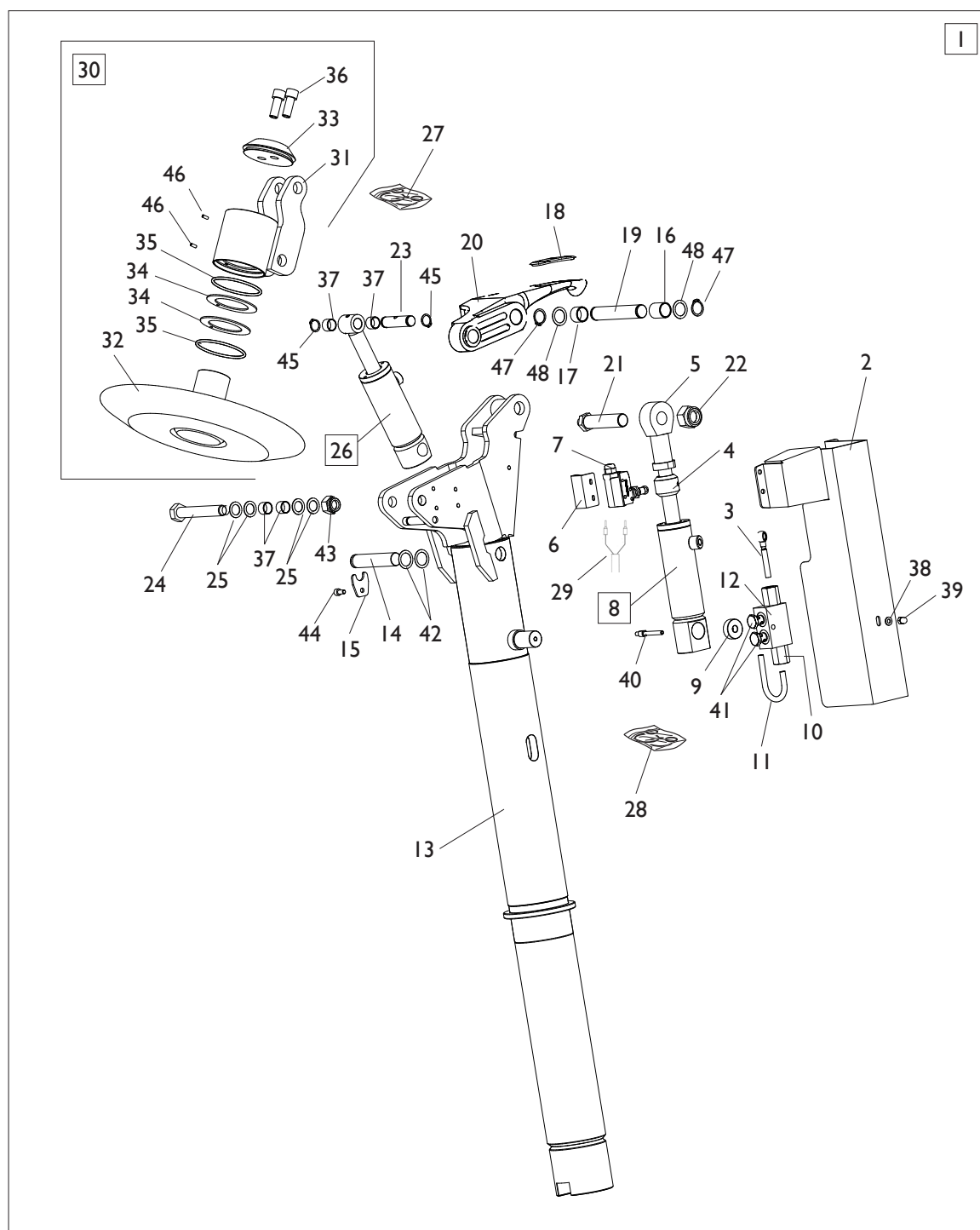
Ref.	Code	Descrizione	Description
1	4-329785	PIASTRA RITEGNO	PLATE
2	4-329896	PIASTRA ROTAZIONE	ROTATING PLATE
3	4-329916	SNODO M14	JOINT M14
4	2-03602	VTE M14X35	HEXAGON HEAD SCREW M14X35
5	4-329784	DISTANZIALE D.20X30,6	SPACER D.20X30,6

[TORNA AL COMPLESSIVO](#)  
[RETURNS TO OVERALL](#)



Ref.	Code	Descrizione	Description
6	4-329782	RONDELLA D.14,2X43X8	WASHER D.14,2X43X8
7	2-03601	VTE M14X1,5X60	HEXAGON HEAD SCREW M14X1,5X60
8	4-329798	MICRO	MICROSWITCH
9	4-329780	PERNO ROTAZIONE CILINDRO	CYLINDER PIN
10	4-329783	RONDELLA D.12,5X20X12,7	WASHER D.12,5X20X12,7
11	5-300824/90	CILINDRO ROTAZIONE UTENSILE	TOOL CYLINDER ROTATING
12	4-329781	RONDELLA ALTA D.12,5X20X12,7	HIGH WASHER D.12,5X20X12,7
13	442912	VALVOLA DI BLOCCO PILOTATA	VALVE
14	298116	KIT GUARNIZIONI CIL. ROT. UTENSILE	SEALS KIT FOR ROTATING CYLINDER
15	4-329895	LAMIERA SOSTEGNO CILINDRO	CYLINDER PLATE
16	4-329894	COPERTURA CILINDRO	CYLINDER COVER
17	4-108975	CAVO MICRO POSIZIONE DISCO STALL.	MICRO CABLE
18	4-329883	RONDELLA D.12,5X55X5	WASHER D.12,5X55X5
19	2-80043	VTE M12X30	HEXAGON HEAD SCREW M12X30
20	4-329884	PERNO FULCRO CARRELLO	FULCRUM PIN
21	4-329885	PERNO GUIDA	GUIDE PIN
22	4-329886	SUPPORTO CILINDRO SOLLEVAMENTO	SUPPORT CYLINDER LIFTING
23	4-329903	DISTANZIALE	SPACER
24	4-329904	CARTER CILINDRO SOLLEVAMENTO	LIFTING CYLINDER COVER
25	5-103303	<b>CILINDRO SOLLEVAMENTO</b>	<b>CYLINDER LIFT ASSEMBLY</b>
26	4-329881	FLANGIA D.40X30X38	FLANGE D.40X30X38
27	4-329882	RONDELLA D.13X45X6	WASHER D.13X45X6
28	4-329905	LAMIERA COPERTURA ASOLE	PLATE
29	4-109370	ATTACCO SUPERIORE	UPPER PLATE
30	4-109369	ATTACCO INFERIORE	LOWER PLATE
31	5-103516	SUPPORTO BRACCIO	ARM SUPPORT
32	4-109362	CARRELLO	CARRIAGE
33	4-109790	LAMIERA PROTEZIONE TUBI	HOSE COVER
34	298117	KIT GUARNIZIONI CIL. SOLLEVAMENTO	SEALS KIT CYLINDER LIFT
35	5-105617	PATTINO COMPLETO	SLIDE ASSEMBLY
36	2-03577	VTE 1/2F M10X80	HEXAGON HEA DSCREW 1/2F M10X80
37	2-03633	RONDELLA D.10	WASHER D.10
38	2-02070	DADO ES.A. M10	AUTOLOCKING HEXAGON NUT M10
39	4-329843	PIATTO DI RISCONTRO	PLATE
40	4-116471	INSERTO	INSERT
41	4-116469	RASAMENTO PATTINO 1mm	SLIDE SHIM 1mm
42	4-117772	<b>RASAMENTO PATTINO 1,5mm</b>	<b>SLIDE SHIM 1,5mm</b>
43	5-105621	PATTINO INFERIORE	LOWER SLIDE
44	5-105622	PATTINO SUPERIORE	UPPER SLIDE
45	2-01073	VTE 1/2F M10X40	HEXAGON HEAD SCREW 1/2F M10X40
46	4-116476	INSERTO INTERMEDIO D.23,2X35X5	INSERT D.23,2X35X5
47	439136	<b>RONDELLA D.91X108X1</b>	<b>WASHER D.91X108X1</b>
48	2-02675	<b>VTSPEI M12X80</b>	<b>SCREW M12X80</b>
49	86500152	<b>BONDED SEALS 1/8</b>	<b>BONDED SEALS 1/8</b>
50	4-116192	<b>VITE CON STROZZATORE D.0,9</b>	<b>SCREW</b>
51	2-00203	<b>RONDELLA D.6</b>	<b>WASHER D.6</b>
52	2-03203	<b>RONDELLA D.8,4X16X1,6</b>	<b>WASHER D.8,4X16X1,6</b>
53	2-91715	<b>VTE M8X12</b>	<b>HEAXAGON HEAD SCREW M8X12</b>
54	2-01954	<b>SPINA D.12X55</b>	<b>PLUG D.12X55</b>
55	2-00129	<b>DADO ES. M10</b>	<b>HEXAGON NUT M10</b>
56	2-00213	<b>RONDELLA D.10</b>	<b>RONDELLA D.10</b>
57	2-03617	<b>VTSPEI M10X45</b>	<b>SCREW M10X45</b>
58	2-01974	<b>VTSPEI M10X65</b>	<b>SCREW M10X65</b>
59	4-109288	<b>LAMIERA PROTEZIONE MICRO</b>	<b>MICRO COVER</b>
60	4-109287	<b>LAMIERA REGOLAZIONE</b>	<b>PLATE</b>
61	4-330111	<b>LAMIERA PROTEZIONE RACCORDI</b>	<b>PROTECTION PLATE</b>
62	4-329707	<b>LAMIERA PASSAPARETE</b>	<b>PLATE</b>
63	2-00314	<b>VTCEI M6X40</b>	<b>HEXAGON HEAD SCREW M6X40</b>
64	2-00211	<b>RONDELLA D.6</b>	<b>WASHER D.6</b>
65	2-00150	<b>DADO ES. M6</b>	<b>HEXAGON NUT M6</b>
66	2-02679	<b>VTBEI M6X12</b>	<b>SCREW M6X12</b>

# GRUPPO BRACCIO STALLONATORE BEAD BREAKING GROUP

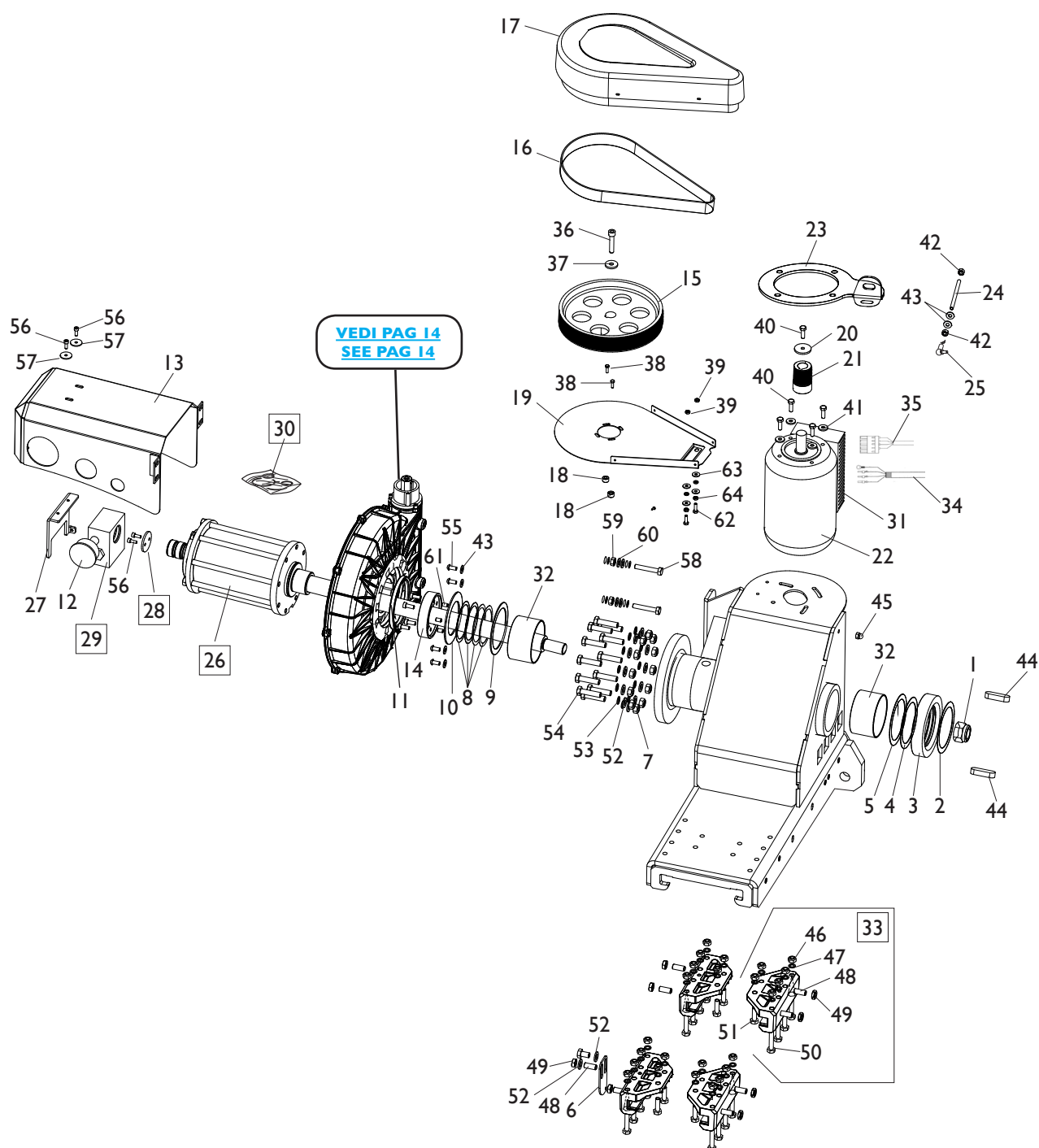


[TORNA AL COMPLESSIVO](#)  
[RETURNS TO OVERALL](#)

Rif. Ref.	Codice Code	Descrizione	Description
<b>1</b>	<b>5-104233</b>	<b>BRACCIO STALLONAT. COMPLETO</b>	<b>BEAD BREAKING ASSEMBLY</b>
2	4-329906	CARTER CILINDRO UNGHIA	CYLINDER COVER
3	4-330119	TUBO L. 62,5mm	HOSE L. 62,5mm
4	4-329799	CAMMA MICRO	MICRO CAM
5	4-329802	SNODO SFERICO M20	JOINT M20
6	4-329797	STAFFA SUPPORTO MICRO	MICRO SUPPORT
7	4-329798	MICRO	MICROSWITCH
8	5-300835/90	CILINDRO UNGHIA	TOOL CYLINDER ASSEMBLY
9	4-330075	DISTANZIALE D.30X10,5	SPACER D.30X10,5
10	4210089	RACCORDO DRITTO 1/4	FITTING 1/4
11	4-330118	TUBO PIEGATO L.75mm	HOSE L.75mm
12	454414	VALVOLA	VALVE
13	5-104234	BRACCIO STALLONATORE	BEAD BREAKER ARM
14	4-329819	PERNO UTENSILE	TOOL PIN
15	4-329640	GANCIO DI FERMO	PLATE
16	3-80101	BOCCOLA D.20X25	BUSH D.20X25
17	3-80150	BOCCOLA	BUSH
18	4-329746	INSERTO UTENSILE	TOOL INSERT
19	4-329821	PERNO UTENSILE	TOOL PIN
20	5-103294	UNGHIA CON BOCCOLE	TOOL WITH BUSH
21	4-329820	PERNO CILINDRO UNGHIA	CYLINDER PIN
22	2-71527	DADO ES.A. M20X1,5	AUTOLOCKING HEXAGON NUT M20X1,5
23	4-329822	PERNO CIL.DISCO STALLONATORE	CYLINDER PIN
24	4-108814	VITE SPECIALE M16X100	SPECIAL SCREW M16X100
25	451144	RONDELLA D.16X24X1	WASHER D.16X24X1
26	5-300837/90	CILINDRO DISCO STALLONATORE	CYLINDER DISC ASSEMBLY
27	298115	KIT GUARNIZIONI CIL. DISCO STALL.	SEALS KIT CYLINDER DISK
28	298124	KIT GUARNIZIONI CILINDRO UNGHIA	SEALS KIT CYLINDER TOOL
29	4-330051	CAVO MICRO UTENSILE	MICRO CABLE
30	5-103295	DISCO STALLONATORE COMPLETO	DISK ASSEMBLY
31	5-103296	SUPPORTO CON BOCCOLE	SUPPORT WITH BUSH
32	4-329814	DISCO STALLONATORE	DISK
33	4-326405	RONDELLA BLOCC. DISCO	LOCKING WASHER
34	4-329813	RONDELLA D.52X78X2	WASHER D.52X78X2
35	3-80152	O-RING	O-RING
36	2-80165	VTCEI M12X30	HEXAGON SOCKET HEAD SCREW M12X30
37	3-01158	BOCCOLA D.16X12	BUSH D.16X12
<b>38</b>	<b>2-00211</b>	<b>RONDELLA D.6</b>	<b>WASHER D.6</b>
<b>39</b>	<b>2-00104</b>	<b>DADO ES. CIECO M6</b>	<b>NUT M6</b>
<b>40</b>	<b>4-109291</b>	<b>PERNO DUE FILETTI</b>	<b>PIN</b>
<b>41</b>	<b>424650</b>	<b>VITE FORATA DOPPIA G1/4</b>	<b>SCREW 2 HOLES G1/4</b>
<b>42</b>	<b>429599</b>	<b>RONDELLA D.20X28X0,2</b>	<b>WASHER D.20X28X0,2</b>
<b>43</b>	<b>2-01163</b>	<b>DADO ES.A. M16</b>	<b>AUTOLOCKING HEXAGON NUT M16</b>
<b>44</b>	<b>2-02817</b>	<b>VTCEI M6X12</b>	<b>HEXAGON SOCKET HEAD SCREW M6X12</b>
<b>45</b>	<b>2-01130</b>	<b>SEEGER D.16</b>	<b>SEEGER D.16</b>
<b>46</b>	<b>2-03307</b>	<b>SPINA D.4X10</b>	<b>PLUG D.4X10</b>
<b>47</b>	<b>2-71587</b>	<b>SEEGER D.20</b>	<b>SEEGER D.20</b>
<b>48</b>	<b>434592</b>	<b>RONDELLA D.20X28X0,5</b>	<b>WASHER D.20X28X0,5</b>

# GR.CARRELLO AUTOCENTRANTE

## TURNTABLE CARRIGE GROUP

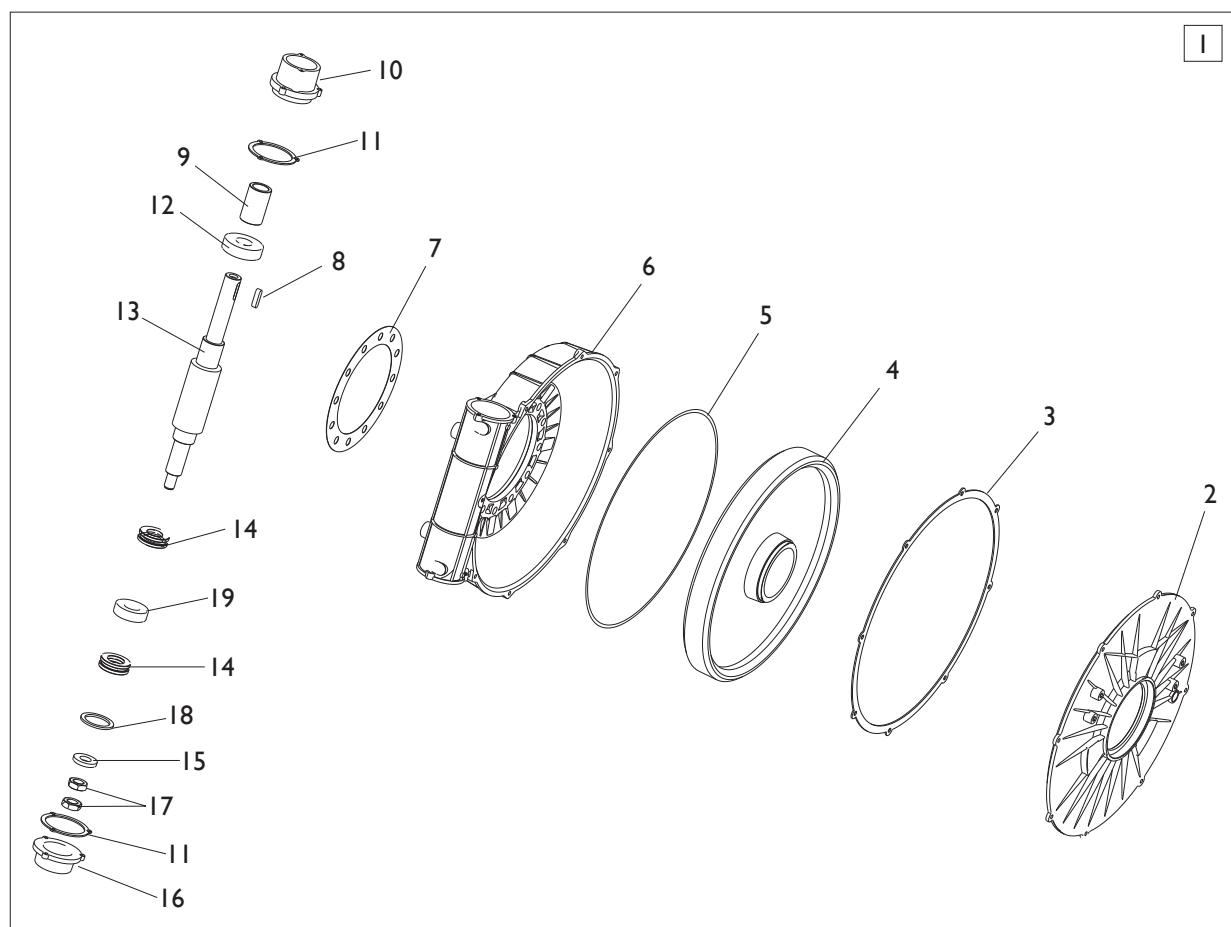


Ref.	Code	Descrizione	Description
<b>I</b>	<b>2-71528</b>	<b>DADO ES.N.A. D.27X2</b>	<b>AUTOLOCKING HEXAGON NUT M27X2</b>
2	85604400	O-RING 4400	O-RING 4400
3	4-329662	ANELLO DISTANZIALE	SPACER
4	85604487	O-RING D.123,40X3,53	O-RING D.123,40X3,53

[TORNA AL COMPLESSIVO](#)  
[RETURNS TO OVERALL](#)

Ref.	Code	Descrizione	Description
5	4-329773	RONDELLA D.100,2X125X1	WASHER D.100,2X125X1
6	4-329953/16	STAFFA COLLEGAMENTO FILO	BRACKET
7	422255	DADO AUTOFRENANTE TRISTOP M12	AUTOLOCKING HEXAGON NUT M12
8	4-329776	RONDELLA D.83,5X99,5X0,2	WASHER D.83,5X99,5X0,2
9	4-329775	RONDELLA IN BRONZO D.100,5X127X2	BRONZE WASHER D.100,5X127X2
10	4-329774	RONDELLA D.83,2X127X3	WASHER D.83,2X127X3
11	453350	ANELLO DI TENUTA D.110 H12	SEAL D.110 H12
12	3-00491	MANOMETRO D.63 1/4" 0-250 BAR/PSI	PRESSURE GAUGE D.63 1/4" 0-250 BAR/PSI
13	4-329631	CARTER CILINDRO	CYLINDER COVER
14	353343	FLANGIA BLOCC. RUOTA ELICOIDALE	LOCKING FLANGE
15	4-329616	PULEGGIA D.248X73,5	PULLEY D.248X73,5
16	4-329615	CINGHIA	BELT
17	4-329613	CARTER CINGHIA	BELT COVER
18	361219	DISTANZIALE FORATO D.15X6,5X9,2	SPACER D.15X6,5X9,2
19	4-329614	LAMIERA CHIUSURA CARTER	PLATE
20	337622	RONDELLA D.8,25X40X4	WASHER D.8,25X40X4
21	4-329617	PULEGGIA MOTORE D.42X66,5	MOTOR PULLEY D.42X66,5
22	4-329778	MOTOINVERTER 180HZ 440V	MOTOINVERTER 180HZ 440V
23	4-329611	LAMIERA INTERFACCIA MOTORE	MOTOR PLATE
24	4-329610	BARRA FILETTATA	THREADED BAR
25	3-02981	SNODO M8	JOINT M8
26	5-103488	CILINDRO AUTOCENTRANTE CPL D.130	TURNTABLE CYLINDER ASSEMBLY D.130
27	4-109780	FERMO RACCORDO GIREVOLE	ROTATING JOINT PLATE
28	34019841	RONDELLA TENUTA	WASHER
29	32019618	DISTRIBUTORE	ROTATING JOINT
30	4-112892	KIT GUARNIZIONI CIL.AUTOCENTRANTE	SEALS KIT FOR TURNTABLE CYLINDER
31	4-115407	SK MOTOINVERTER	MOTOINVERTER P.C. BOARD
32	3-01238	BOCCOLA D.100X60	BUSH D.100X60
33	5-105631	PATTINO COMPLETO	SLIDE ASSEMBLY
34	4-109381	CAVO ALIM. MOTORE	MOTOR SUPPLY CABLE
35	4-330058	CAVO COMANDI MOTORE	MOTOR COMMAND CABLE
36	2-03084	<b>VTCEI 1/2F M10X50</b>	<b>HEX.SOCKET HEAD SCREW 1/2F M10X50</b>
37	312873	<b>RONDELLA D.10X30X4</b>	<b>WASHER D.10X30X4</b>
38	2-02337	<b>VTE M5X16</b>	<b>HEXAGON HEAD SCREW M5X16</b>
39	2-00167	<b>DADO ES. M6</b>	<b>HEXAGON NUT M6</b>
40	2-02024	<b>VTE M8X25</b>	<b>HEXAGON HEAD SCREW M8X25</b>
41	305972	<b>RONDELLA D.8,25X22X3</b>	<b>WASHER D.8,25X22X3</b>
42	2-00128	<b>DADO ES. M8</b>	<b>HEXAGON NUT M8</b>
43	344207	<b>RONDELLA D.8,4X19X2</b>	<b>WASHER D.8,4X19X2</b>
44	2-01162	<b>CHIAVETTA D.20X12X60</b>	<b>KEY D.20X12X60</b>
45	2-00105	<b>DADO ES. CAL. M8</b>	<b>HEXAGON NUT M8</b>
46	2-02070	<b>DADO ES.A. M10</b>	<b>AUTOLOCKING HEXAGON NUT M10</b>
47	2-03633	<b>RONDELLA D.10</b>	<b>WASHER D.10</b>
48	2-02863	<b>VSTEI M12X30</b>	<b>SCREW M12X30</b>
49	2-91640	<b>DADO ES. M12</b>	<b>HEXAGON NUT M12</b>
50	2-03248	<b>VTE 1/2F M10X75</b>	<b>HEXAGON HEAD SCREW 1/2F M10X75</b>
51	2-01054	<b>VTE 1/2F M10X35</b>	<b>HEXAGON HEAD SCREW 1/2F M10X35</b>
52	2-00214	<b>RONDELLA D.12</b>	<b>WASHER D.12</b>
53	2-03634	<b>RONDELLA D.12</b>	<b>WASHER D.12</b>
54	2-01124	<b>VTE 1/2F M12X50</b>	<b>HEXAGON HEAD SCREW 1/2F M12X50</b>
55	2-02157	<b>VTBEI M8X18</b>	<b>SCREW M8X18</b>
56	2-02378	<b>VTCEI M6X16</b>	<b>HEAXAGON HEAD SCREW M6X16</b>
57	329007	<b>RONDELLA D.6,25X28X2</b>	<b>WASHER D.6,25X28X2</b>
58	2-80181	<b>VTE M10X60</b>	<b>HEAXAGON HEAD SCREW M10X60</b>
59	2-91726	<b>DADO ES. M10</b>	<b>HEXAGON NUT M10</b>
60	2-00213	<b>RONDELLA D.10</b>	<b>WASHER D.10</b>
61	2-01001	<b>VSTEI M8X8</b>	<b>SCREW M8X8</b>
62	2-01223	<b>VTE M6X16</b>	<b>HEXAGON HEAD SCREW M6X16</b>
63	2-00211	<b>RONDELLA D.6</b>	<b>WASHER D.6</b>
64	2-00146	<b>DADO ES. M6</b>	<b>HEXAGON NUT M6</b>

# GRUPPO RIDUTTORE GEARBOX GROUP

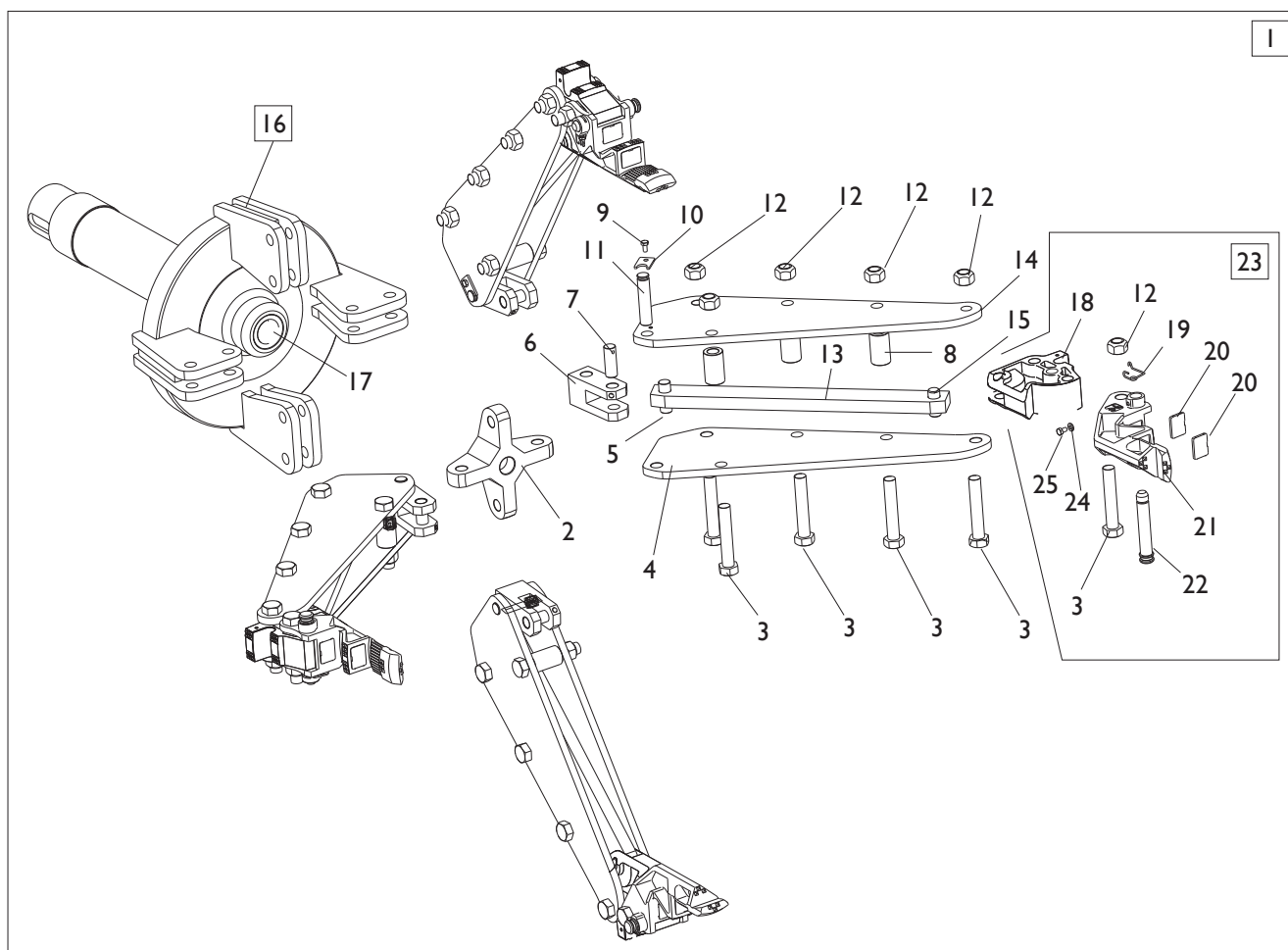


[TORNA AL COMPLESSIVO](#)  
[RETURNS TO OVERALL](#)

Rif. Ref.	Codice Code	Descrizione	Description
1	5-103289	RIDUTTORE COMPLETO	GEARBOX ASSEMBLY
2	354213	COPERCHIO	COVER
3	4-329053	GUARNIZIONE D.407- D.382X2	SEAL D.407- D.382X2
4	341541	RUOTA D.378X43	WHEEL D.378X43
5	454882	O-RING D.380,59X3,53	O-RING D.380,59X3,53
6	4-329636	SCATOLA	BOX
7	4-329637	GUARNIZIONE D.210 - D.150,5X0,5	SEAL D.210 - D.150,5X0,5
8	2-00716	CHIAVETTA D.8X7X30	KEY D.8X7X30
9	354881	BOCCOLA D.25,3X35X56	BUSH D.25,3X35X56
10	354876	FONDELLO	CASING
11	4-329212	GUARNIZIONE D.76 - D.43X2	SEAL D.76 - D.43X2
12	2-02213	CUSCINETTO RADIALE D.25X62X17	RADIAL BEARING D.25X62X17
13	5-327657	KIT VITE SENZA FINE	SCREW KIT
14	2-01035	CUSCINETTO ASSIALE D.25X47X15	AXIAL BEARING D.25X47X15
<b>15</b>	<b>3015726</b>	<b>RONDELLA D.20,2X38X7</b>	<b>WASHER D.20,2X38X7</b>
16	354875	FONDELLO	CASING
<b>17</b>	<b>2-91794</b>	<b>DADO ES. M20X1,5</b>	<b>HEXAGON NUT M20X1,5</b>
18	317281	RONDELLA D.40X52X4	WASHER D.40X52X4
19	2-01034	CUSCINETTO RADIALE D.25X52X15	RADIAL BEARING D.25X52X15

# GRUPPO AUTOCENTRANTE

## TURNTABLE GROUP

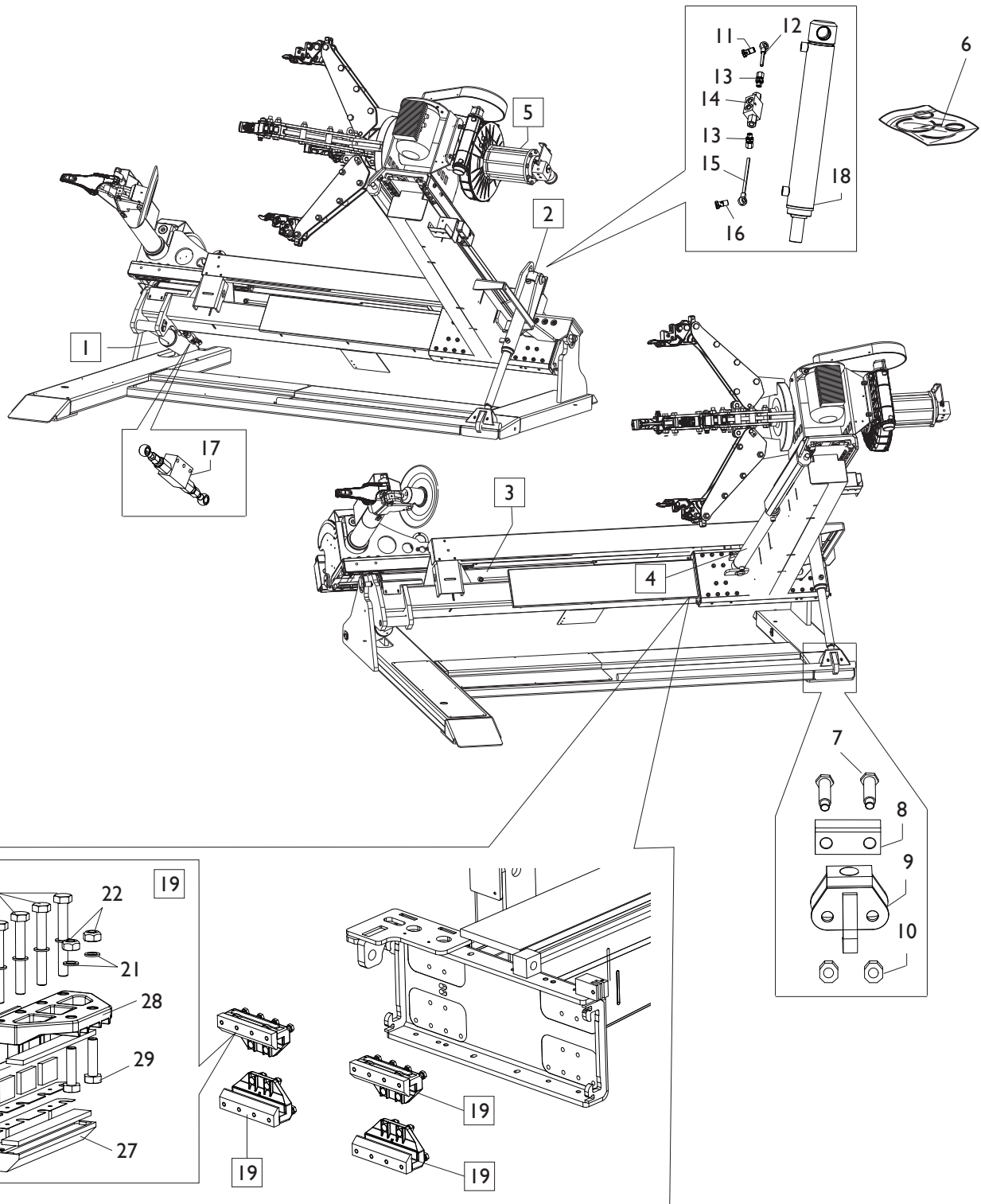


[TORNA AL COMPLESSIVO](#)  
[RETURNS TO OVERALL](#)



Rif. Ref.	Codice Code	Descrizione	Description
1	5-300805	AUTOCENTRANTE COMPLETO	TURNTABLE ASSEMBLY
2	4-329661	CROCIERA MANDRINO	TURNTABLE CROSS
3	2-03580	VTE M18X1,5 L.100mm 1/2F	HEXAGON HEAD SCREW M18X1,5 L.100mm 1/2F
4	4-329652	LAMIERA FORATA	PLATE
5	4-329639	SPINOTTO	PIN
6	4-329658	BIELLA	SHORT ROD
7	4-329650	SPINOTTO FORATO	PIN
8	4-329642	DISTANZIALE D.30X50,5	SPACER D.30X50,5
9	2-00360	VTE M6X12	HEXAGON HEAD SCREW M6X12
10	4-329640	GANCIO DI FERMO	PLATE
11	4-329641	PERNO LUNGO D.18	LONG PIN D.18
12	424974	DADO ES.A. M18X1,5	AUTOLOCKING HEXAGON NUT M18X1,5
13	4-329654	BIELLA	ROD
14	4-329659	LAMIERA FILETTATA	PLATE
15	4-329651	SPINOTTO GRIFFA FISSA	PIN
16	5-103290	MANDRINO CON BOCCOLA	TURNTABLE WITH BUSH
17	438592	BRONZINA D.40,25X55X30	BUSH D.40,25X55X30
18	4-329755	GRIFFA FISSA	SUPPORT
19	4-329766	MOLLA TORSIONE D.10X2X4	TORSION SPRING D.10X2X4
20	4-329541	TASSELLO D.27X36X4,5	INSERT D.27X36X4,5
21	4-329756	GRIFFA MOBILE	MOBILE SUPPORT
22	4-329657	PERNO BLOCCAGGIO GRIFFA	PIN
23	5-300845	GRIFFA COMPLETA	SUPPORT ASSEMBLY
24	2-00211	<b>RONDELLA D.6</b>	<b>WASHER D.6</b>
25	2-01006	<b>VTCEI M6X8</b>	<b>HEXAGON SOCKET HEAD SCREW M6X8</b>

# GRUPPO CILINDRI CYLINDER GROUP

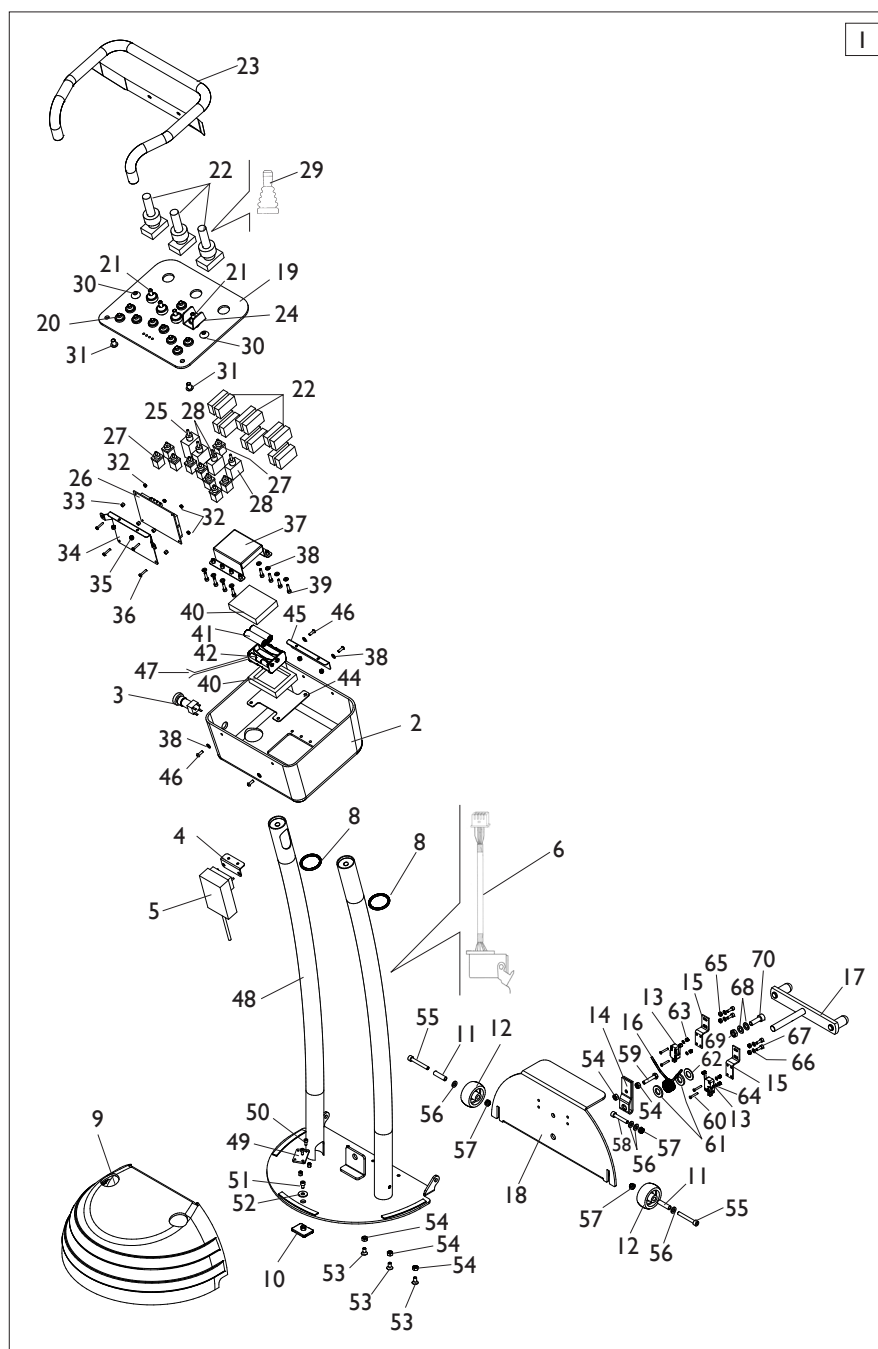


[TORNA AL COMPLESSIVO](#)  
[RETURNS TO OVERALL](#)

Rif. Ref.	Codice Code	Descrizione	Description
1	5-300820/90	CILINDRO COMPLETO D.80 CORSA 198	CYLINDER ASSEMBLY D.80
2	5-104907	CILINDRO COMPLETO D.55 CORSA 309	CYLINDER ASSEMBLY D.55
<b>3</b>	<b>5-120394</b>	<b>CILINDRO COMPLETO D.85 C.1060</b>	<b>CYLINDER ASSEMBLY D.85</b>
4	5-104183	CILINDRO COMPLETO D.55 CORSA 670	CYLINDER ASSEMBLY D.55
5	5-103488	CILINDRO AUTOCENTRANTE CPL D.130	TURNTABLE CYLINDER ASSEMBLY D.130
6	298118	KIT GUARNIZIONI CIL. D.80 CORSA 198	SEALS KIT CYLINDER D.80
6	298119	KIT GUARNIZ. CIL. D.55 CORSA 309 E 90	SEALS KIT CYLINDER D.55
6	298120	KIT GUARNIZIONI CIL. D.85 CORSA 1060	SEALS KIT CYLINDER D.85
6	298121	KIT GUARNIZIONI CIL. D.55 CORSA 670	SEALS KIT CYLINDER D.55
6	4-112892	KIT GUARNIZIONI CIL.AUTOCENTRANTE	SEALS KIT FOR TURNTABLE CYLINDER
7	4-329705	PERNO PATTINO	SLIDE PIN
8	4-115275	PATTINO	SLIDE
9	4-329701	STAFFA ATTACCO PATTINO	SLIDE PLATE
10	2-71520	DADO ES. M14X1,5	HEXAGON NUT M14X1,5
11	4-330135	VITE FORATA G1/4+STROZZ D.1,25	SCREW G1/4 WITH THROTTLE D.1,25
12	4-115212	TUBO D.8 L.68mm	HOSE D.8 L.68mm
13	4210089	RACCORDO DRITTO G1/4	D-FITTING G1/4
14	454414	VALVOLA DOPPIA G1/4	VALVE G1/4
15	4-404675	TUBO D.8 L.142,5mm	HOSE D.8 L.142,5mm
16	424650	VITE FORATA DOPPIA G1/4	SCREW 2 HOLES G1/4
17	4-330120	VALVOLA CILINDRO SOLL.TRAVE	VALVE
18	5-300818/90	CILINDRO COMPLETO D.55 CORSA 90	CYLINDER ASSEMBLY D.55
19	5-105617	PATTINO COMPLETO	SLIDE ASSEMBLY
20	2-03577	VTE 1/2F M10X80	HEXAGON HEA DSCREW 1/2F M10X80
21	2-03633	RONDELLA D.10	WASHER D.10
22	2-02070	DADO ES.A. M10	AUTOLOCKING HEXAGON NUT M10
23	4-329843	PIATTO DI RISCONTRO	PLATE
24	4-116471	INSERTO	INSERT
25	4-116469	RASAMENTO PATTINO 1mm	SLIDE SHIM 1mm
<b>26</b>	<b>4-117772</b>	<b>RASAMENTO PATTINO 1,5mm</b>	<b>SLIDE SHIM 1,5mm</b>
27	5-105621	PATTINO INFERIORE	LOWER SLIDE
28	5-105622	PATTINO SUPERIORE	UPPER SLIDE
29	2-01073	VTE 1/2F M10X40	HEXAGON HEAD SCREW 1/2F M10X40
30	4-116476	INSERTO INTERMEDIO D.23,2X35X5	INSERT D.23,2X35X5

# GRUPPO PEDALIERA

## PEDAL GROUP

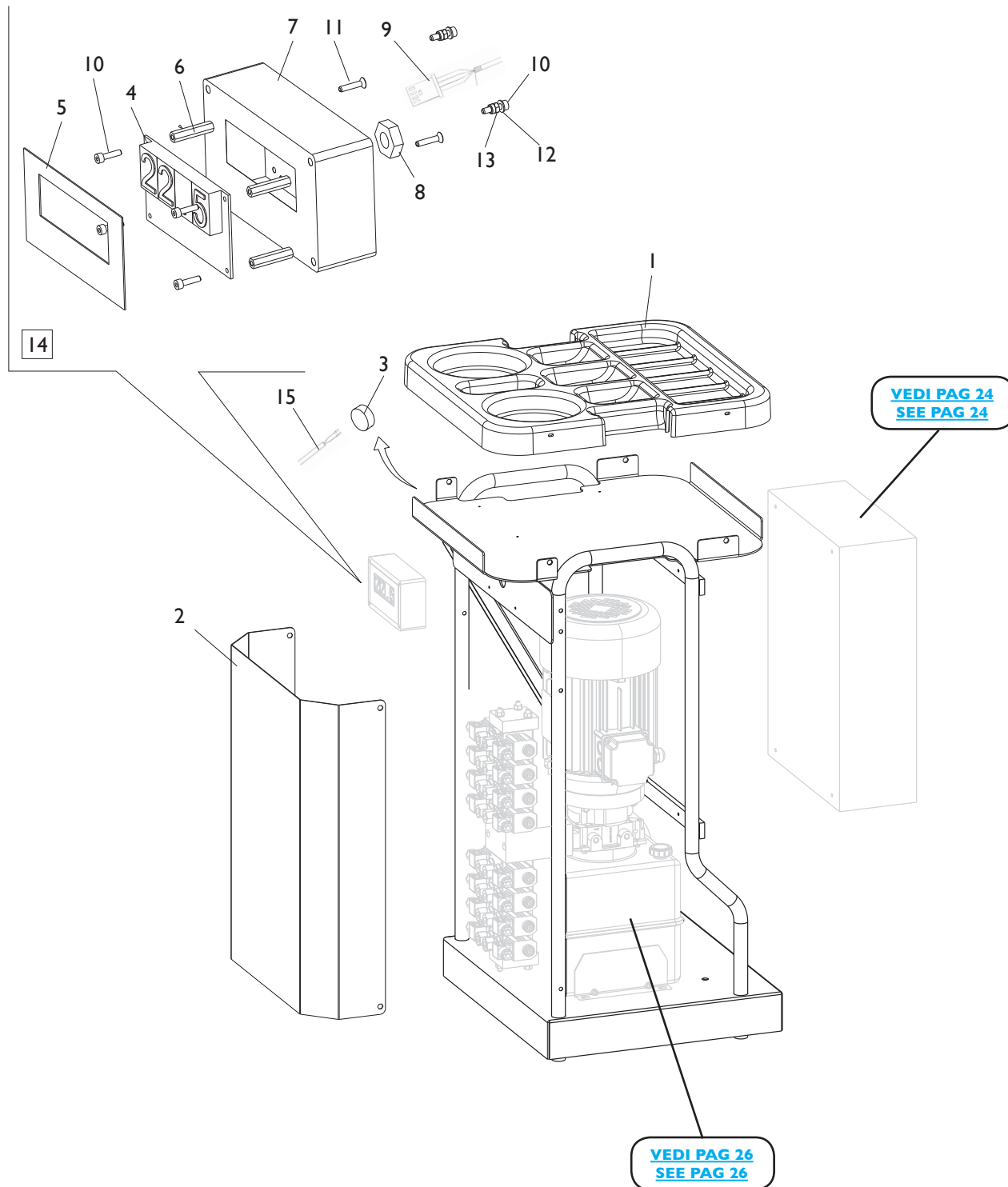


Ref.	Code	Descrizione	Description
1	5-103088	MANIPOLATORE COMPLETO	CONTROL UNIT ASSEMBLY
2	4-108729	COVER PLANCIA	COVER
3	5-100619	PULSANTE EMERGENZA	EMERGENCY BUTTON
4	4-108727/90	SUPPORTO RADIO MODEM	RADIO MODEM SUPPORT
5	5-300501	RADIO MODEM	RADIO MODEM
6	4-330060	CAVO SERIALE INTERNO	INTERNAL CABLE
7	4-330050	CARICABATTERIE 100-240V	BATTERY CHARGER 100-240V
8	433248	O-RING D.34,52X3,53	O-RING D.34,52X3,53
9	4-108751	COVER PEDALI	PEDAL COVER

[TORNA AL COMPLESSIVO](#)  
[RETURNS TO OVERALL](#)

Ref.	Code	Descrizione	Description
10	4-329541	TASSELLO D.27X36X4,5	INSERT D.27X36X4,5
11	4-108753	DISTANZIALE D.8X29	SPACER D.8X29
12	3-03067	RUOTA D.50X22	WHEEL D.50X22
13	440874	MICROINTERRUTTORE	MICROSWTICH
14	317491	LEVA COMANDI MICRO	COMMAND LEVER
15	355786	STAFFA PORTA MICRO	MICRO BRACKET
16	401270	MOLLA PEDALE D.18X2,8X14	PEDAL SPRING D.18X2,8X14
17	4-108754/90	PEDALE	PEDAL
18	4-108752	PROTEZIONE PEDALE	PEDAL COVER
19	4-108730	PIASTRA CONSOLLE	CONSOLLE PLATE
20	3-03086	PROTEZIONE IN GOMMA PULSANTE	RUBBER COVER
21	3-03085	PROTEZIONE IN GOMMA	RUBBER COVER
22	3-03079	MANIPOLATORE 4 POSIZIONI	JOYSTICK FOUR POSITION
23	4-108735	TUBO CONSOLLE	CONSOLLE PLATE
24	340747	PROTEZIONE DEVIATORE	SWITCH COVER
25	3-03084	COMMUTATORE BIPOLARE	BIPOLAR SWITCH
26	4-108731	SK CPU	CPU P.C. BOARD
27	3-03083	PULSANTE N.A.	BUTTON NORMAL-OPEN
28	3-03082	COMMUTATORE UNIPOLARE	UNIPOLAR SWITCH
29	3-03143	PROTEZ. IN GOMMA MANIPOLATORE	JOYSTICK RUBBER COVER
30	2-02572	VTBEI M10X25	SCREW M10X25
31	2-02148	VTBEI M8X12	SCREW M8X12
32	2-00124	DADO ES. M3	HEXAGON NUT M3
33	430100	DISTANZIALE	SPACER
34	4-108738	SUPPORTO SK	P.C. BOARD SUPPORT
35	2-00125	DADO ES. M4	HEXAGON NUT M4
36	2-00575	VTCIC M3X16	SCREW M3X16
37	4-132000	CARTER BATTERIE	BATTERY PLATE
38	2-00209	RONDELLA D.4	WASHER D.4
39	2-00290	VTCEI M4X16	HEX. SOCKET HEAD SCREW M4X16
40	4-131822	PROTEZIONE BATTERIE	BATTERY COVER
41	4-110935	BLISTER 4 BATTERIE	BATTERY (4 PZ)
42	4-116398	PORTABATTERIE	BATTERY HOLDER
43	4-113077	ADATTATORE SPINE UNIVERSALE	UNIVERSAL ADAPTOR PLUG
44	4-131820	CARTER CHIUSURA	PLATE
45	4-108739	SUPPORTO COVER	COVER SUPPORT
46	2-02146	VTBEI M4X12	SCREW M4X12
47	4-132001	CAVO BATTERIA	BATTERY CABLE
48	4-108745	TELAIO CONSOLLE	CONSOLLE BODY
49	4-105988	LAMIERA FISS. CONNETTORE	CONNECTOR PLATE
50	2-00295	VTCEI M4X8	HEXAGON SOCKET HEAD SCREW M4X8
51	2-00995	VTCEI M5X8	HEXAGON SOCKET HEAD SCREW M5X8
52	2-00679	ROSETTA D.6,6X18X1,5	WASHER D.6,6X18X1,5
53	2-02010	VSTEI M6X12	CKS SCREW SOCKET M6X12
54	2-00146	DADO ES. M6	HEXAGON NUT M6
55	2-02846	VTCEI M6X45	HEX. SOCKET HEAD SCREW M6X45
56	2-00211	RONDELLA D.6	WASHER D.6
57	2-01979	DADO ES.A. M6	AUTOLOCKING HEXAGON NUT M6
58	2-00909	VTCEI M6X35	HEX. SOCKET HEAD SCREW M6X35
59	2-00364	VTE M6X30	HEXAGON HEAD SCREW M6X30
60	2-02961	VTSPIC M3X20	SCREW M3X20
61	2-00214	RONDELLA D.12	WASHER D.12
62	2-02249	RONDELLA ELASTICA D.13X24	ELASTIC WASHER D.13X24
63	2-01017	DADO ES. M3	HEXAGON NUT M3
64	2-71547	ROSETTA D.3	WASHER D.3
65	2-00143	DADO ES. M4	HEXAGON NUT M4
66	2-71541	ROSETTA D.4	WASHER D.4
67	2-00733	VTCEI M4X12	HEX. SOCKET HEAD SCREW M4X12
68	2-71542	ROSETTA D.8	WASHER D.8
69	2-00156	DADO ES. M8	HEXAGON NUT M8
70	2-02006	VTCEI M8X25	HEX. SOCKET HEAD SCREW M8X25

# GRUPPO CENTRALINA POWER GROUP



[VEDI PAG 24](#)  
[SEE PAG 24](#)

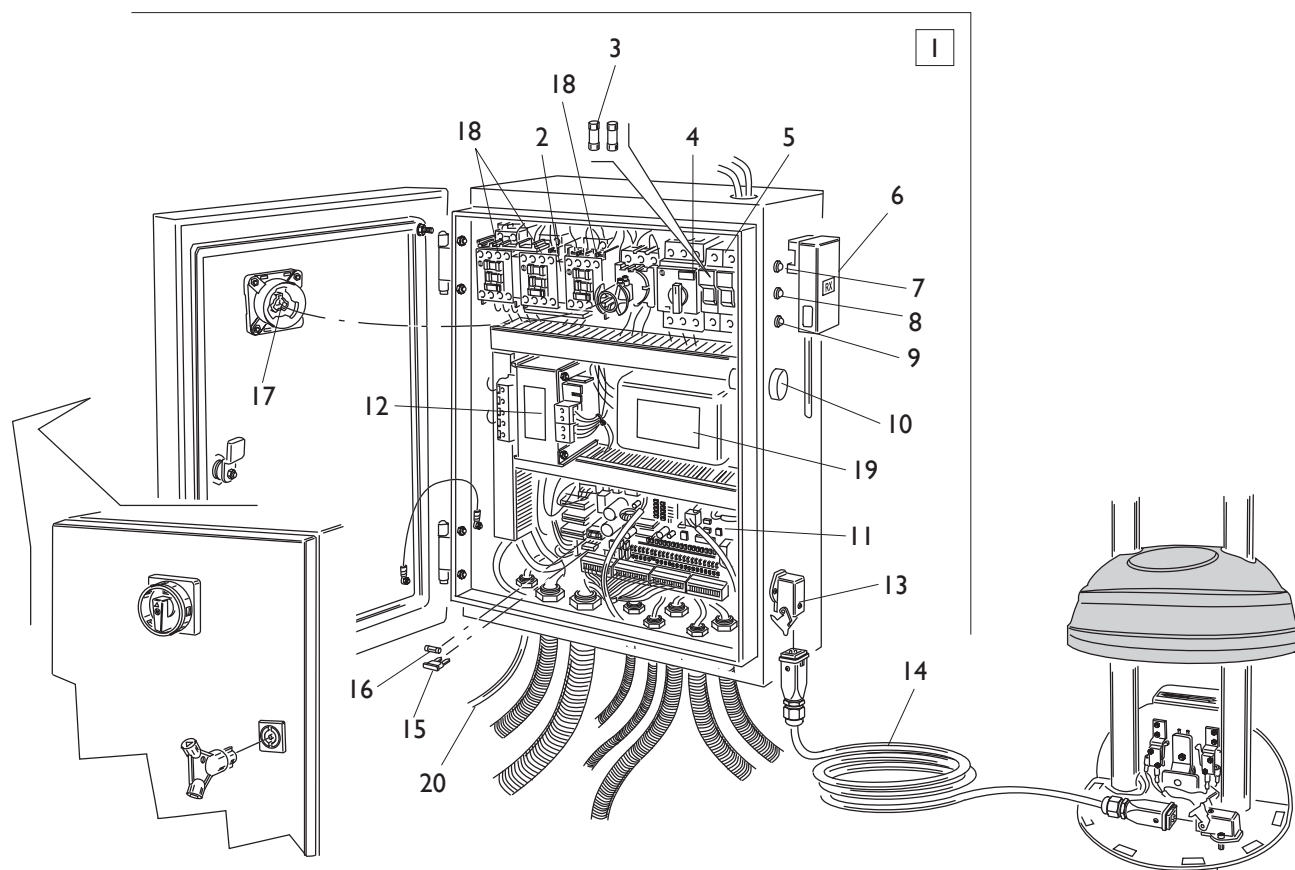
[VEDI PAG 26](#)  
[SEE PAG 26](#)

[TORNA AL COMPLESSIVO](#)  
[RETURNS TO OVERALL](#)

Rif. Ref.	Codice Code	Descrizione	Description
1	4-106002	PIANALE PORTAUTENSILI	TOOL HOLDER
2	4-330035	LAMIERA CHIUSURA CENTRALINA	LOCKING PLATE
3	3-03078	SEGNALATORE ACUSTICO	ALARM
4	4-330037	SK DISPLAY	DISPLAY P.C. BOARD
5	4-108817	TARGHETTA DISPLAY	DISPLAY
6	4-330038	DISTANZILE L.33mm	SPACER L.33mm
7	4-330036	SCATOLA DISPLAY	DISPLAY BOX
8	420677	CONTRODADO PG13,5X3	NUT PG13,5X3
9	4-330055	CAVO COLL. DISPLAY	DISPLAY CABLE
<b>10</b>	<b>2-00290</b>	<b>VTCEI M4X16</b>	<b>HEX. SOCKET HEAD SCREW M4X16</b>
<b>11</b>	<b>2-01956</b>	<b>VTSPEI M4X20</b>	<b>CKS SCREW SOCKET M4X20</b>
<b>12</b>	<b>2-00209</b>	<b>RONDELLA D.4</b>	<b>WASHER D.4</b>
<b>13</b>	<b>2-01018</b>	<b>DADO ES.A. M4</b>	<b>AUTOLOCKING HEXAGON NUT M4</b>
14	5-300859	DISPLAY COMPLETO	DISPLAY ASSEMBLY
<b>15</b>	<b>4-109046</b>	<b>CAVO SEGNALATORE ACUSTICO</b>	<b>ALARM CABLE</b>

# GRUPPO IMPIANTO ELETTRICO

# ELECTRIC SYSTEM GROUP

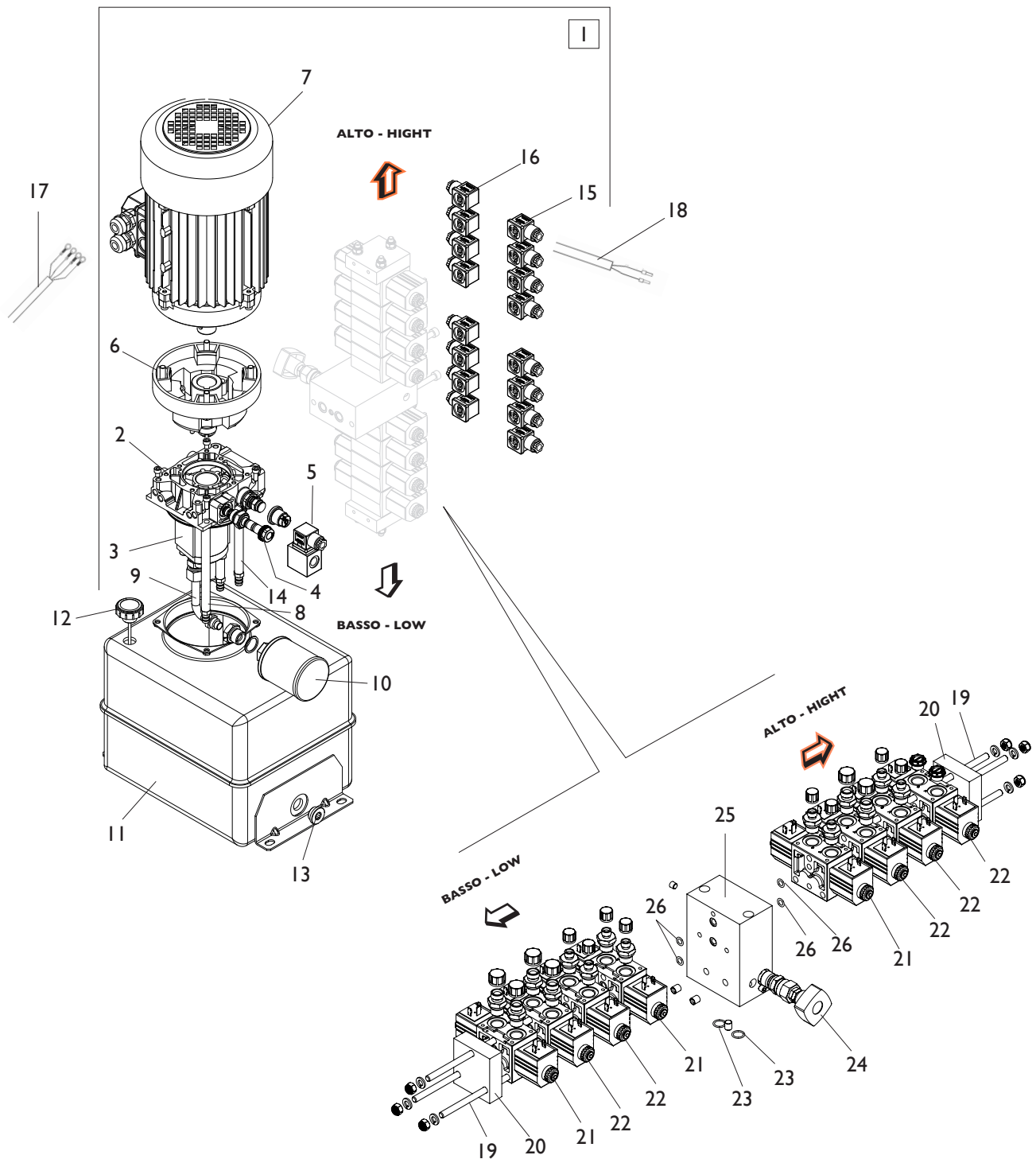


[TORNA AL COMPLESSIVO](#)  
[RETURNS TO OVERALL](#)



Rif. Ref.	Codice Code	Descrizione	Description
1	5-300864	IMP. ELETTRICO CPL .230-400V/3/50-60HZ	ELECTRIC SYSTEM ASSEMBLY 230-400V/3/50-60HZ
2	3-03075	INTERBLOCCO MECCANICO	MECANIC BLOCK
3	3-03077	FUSIBILE 10,3X38GG 1A	FUSE 10,3X38GG 1A
4	3-80143	SALVAMOTORE 6,3-10A	OVERLOAD CUTOOUT 6,3-10A
<b>5</b>	<b>84990792</b>	<b>PORTAFUSIBILI 2 POLI</b>	<b>FUSE HOLER 2P</b>
<b>6</b>	<b>5-300458</b>	<b>KIT RADIOMODEM</b>	<b>RADIOMODEM KIT</b>
7	4-330057	LED VERDE	GREEN LED
8	4-327260	LED BIANCO	WHITE LED
9	4-330056	LED ROSSO	RED LED
10	3-80144	SPIA LUMINOSA	PILOT LAMP
11	4-330064	SK CPU	CPU P.C. BOARD
12	4-330040	TRASFORMATORE	TRANSFORMER
13	4-330045	CAVO SERIALE INTERNO	INTERNAL CABLE
14	4-330069	CAVO COMANDI	COMMAND CABLE
15	4-109327	FUSIBILE 10A	FUSE 10A
<b>16</b>	<b>4-102580</b>	<b>FUSIBILE RITARDATO 3A</b>	<b>FUSE 3A</b>
<b>17</b>	<b>3-80140</b>	<b>INTERRUTTORE GENERALE</b>	<b>POWER SWITCH</b>
18	3-80146	TELERUTTORE 24VAC-16A	REMOTE CONTROL
19	3-03272	FILTRO RETE 10A	FILTER 10A
20	4-109384	CAVO RETE	POWER CABLE

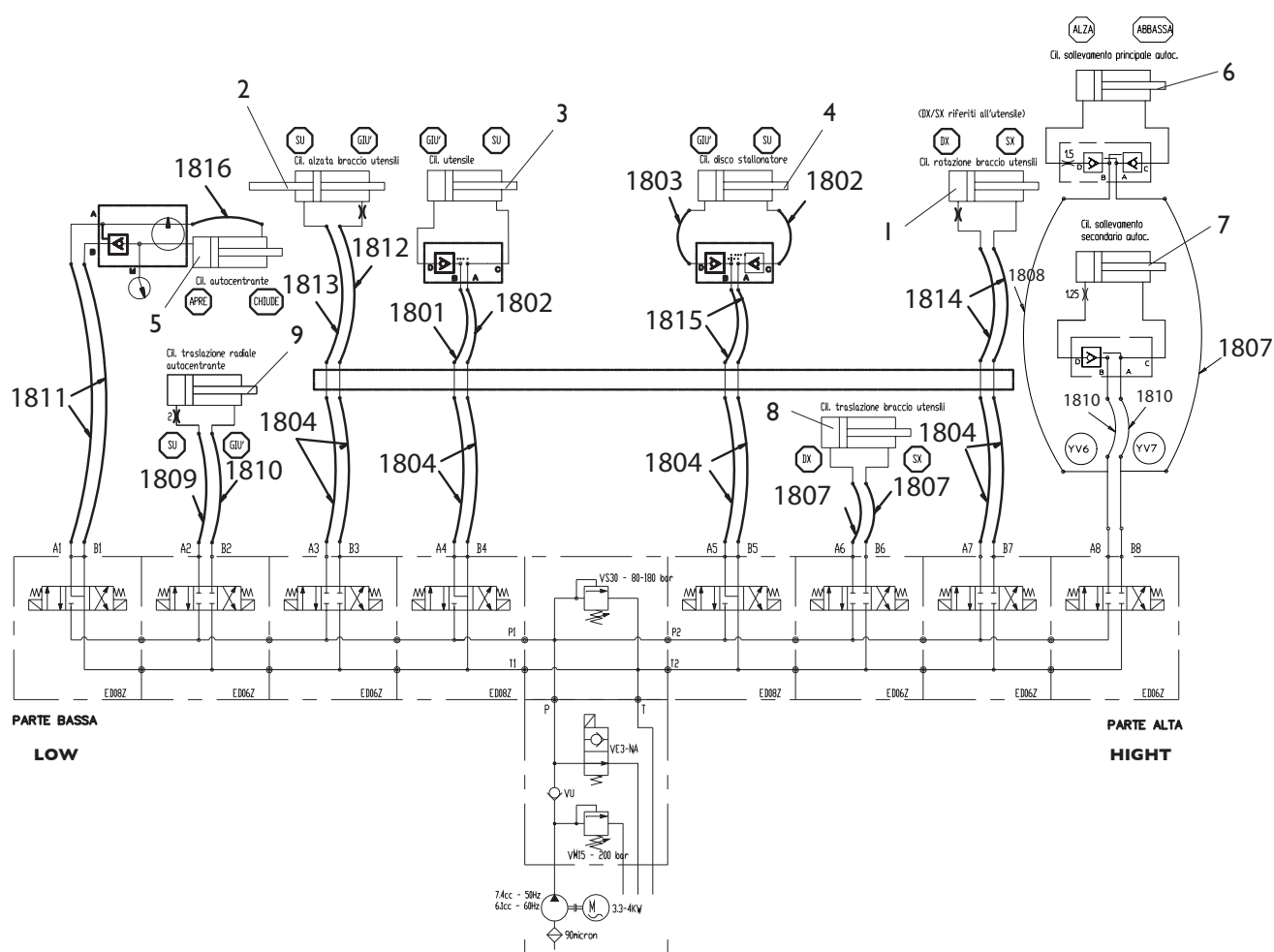
# GRUPPO CENTRALINA IDRAULICA HYDRAULIC POWER GROUP



[TORNA AL COMPLESSIVO](#)  
[RETURNS TO OVERALL](#)

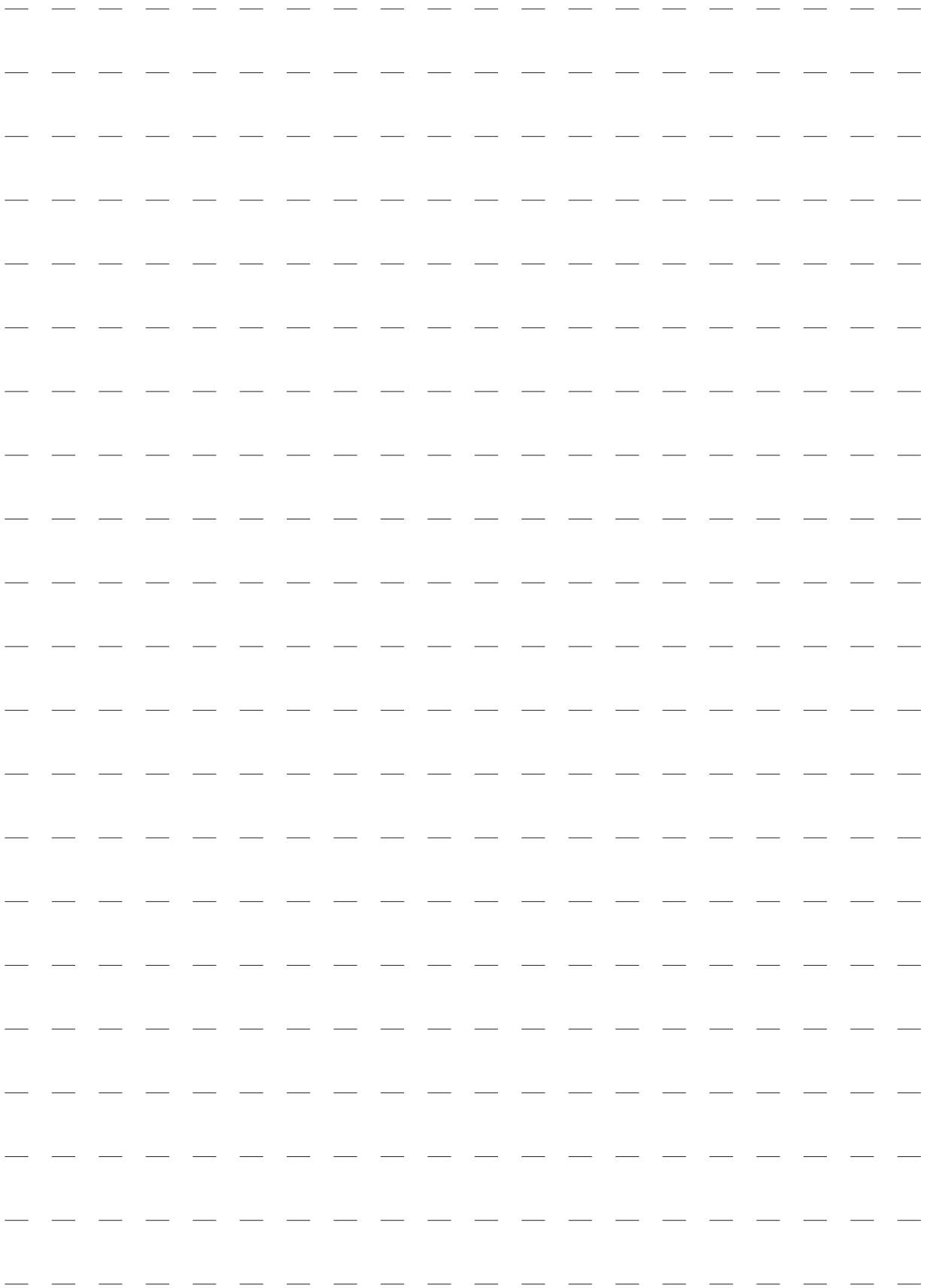
Rif. Ref.	Codice Code	Descrizione	Description
1	5-300863	CENTR. IDRAULICA CPL <b>400V/3/50HZ</b>	HYDRAULIC POWER ASSEMBLY <b>400V/3/50HZ</b>
1	5-300870	CENTR. IDRAULICA CPL <b>230V/3/60HZ</b>	HYDRAULIC POWER ASSEMBLY <b>230V/3/60HZ</b>
2	4-109301	COLLETTORE	MAINFOLD
3	4-109302	POMPA 7,4CC <b>50HZ</b>	PUMP 7,4CC <b>50HZ</b>
3	4-109303	POMPA 6,1CC <b>60HZ</b>	PUMP 6,1CC <b>60HZ</b>
4	4-109304	VALVOLA PILOTATA	CHECK VALVE
<b>5</b>	<b>86990346</b>	<b>SOLENOIDE 24V</b>	<b>SOLENOID 24V</b>
6	4-109306	KIT TRASCINAMENTO	FLANGE KIT
7	4-109307	MOTORE <b>230-400V/50-60HZ</b>	MOTOR <b>230-400V/50-60HZ</b>
8	86990239	TUBO DI SCARICO L.200mm	HOSE L.200mm
9	4-109308	TUBO ASPIRAZIONE L.83mm	HOSE L.83mm
10	4-109309	FILTRO	FILTER
11	4-109310	SERBATOIO RETTANGOLARE 15L.	RECTANGULAR TANK 15 LITER
12	4-109311	TAPPO CARICO OLIO	OIL CAP
13	3-02275	TAPPO SCARICO OLIO	OIL CAP
14	86990279	TUBO DI SCARICO L.150mm	HOSE L.150mm
15	418062	CONNETTORE NERO	BLACK CONNECTOR
16	424693	CONNETTORE GRIGIO	GREY CONNECTOR
17	4-109383	CAVO ALIMENTAZIONE MOTORE	MOTOR SUPPLY CABLE
18	4-109382	CAVO ELETTROVALVOLE	SOLENOID VALVE CABLE
19	4-109300	TIRANTE M8X240	TIE ROD M8X240
20	86990345	PIASTRA CHIUSURA	LOCKING PLATE
21	86990340	DISTRIBUTORE 24V	SOLENOID VALVE ASSEMBLY 24V
22	86990341	DISTRIBUTORE 24V	SOLENOID VALVE ASSEMBLY 24V
23	417749	O-RING D.14X1,78	O-RING D.14X1,78
24	86990350	VALVOLA DI MAX	RELIEF VALVE
25	4-109299	BLOCCO CON VALVOLA	BLOCK WITH VALVE
26	423078	O-RING D.8,73X1,78	O-RING D.8,73X1,78

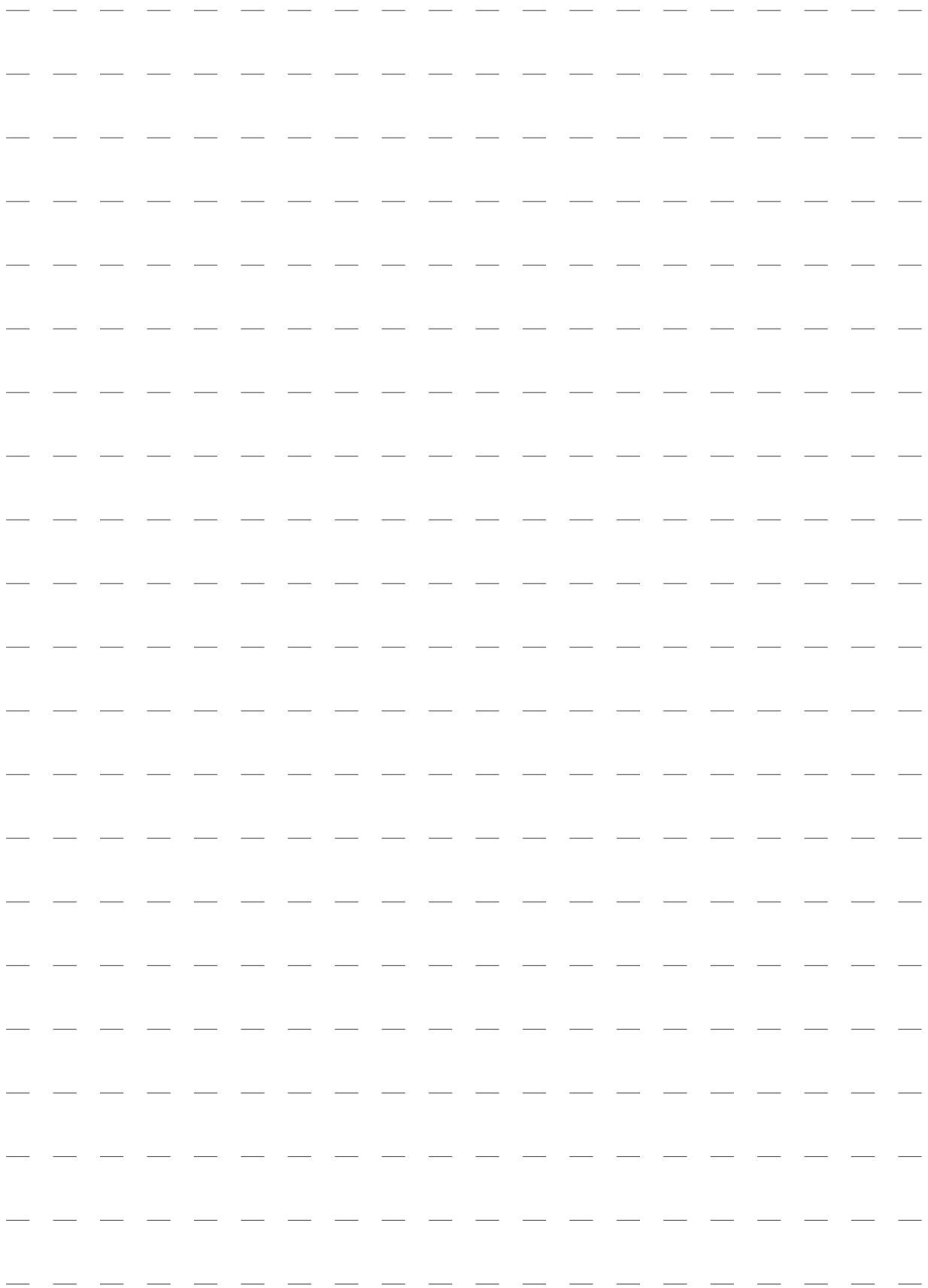
# SCHEMA IDRAULICO HYDRAULIC DIAGRAM



**TORNA AL COMPLESSIVO  
RETURNS TO OVERALL**

Rif. Ref.	Codice Code	Descrizione	Description
1	5-300824/90	CILINDRO ROTAZIONE UTENSILE	TOOL CYLINDER ROTATING
<b>2</b>	<b>5-103303</b>	<b>CILINDRO SOLLEVAMENTO</b>	<b>CYLINDER LIFT ASSEMBLY</b>
3	5-300835/90	CILINDRO UNGHIA	TOOL CYLINDER ASSEMBLY
4	5-300837/90	CILINDRO DISCO STALLONATORE	CYLINDER DISC ASSEMBLY
5	5-103488	CILINDRO AUTOCENTRANTE CPL D.130	TURNTABLE CYLINDER ASSEMBLY D.130
6	5-300820/90	CILINDRO COMPLETO D.80 CORSA 198	CYLINDER ASSEMBLY D.80
7	5-104907	CILINDRO COMPLETO D.55 CORSA 309	CYLINDER ASSEMBLY D.55
<b>8</b>	<b>5-120394</b>	<b>CILINDRO COMPLETO D.85 C.1060</b>	<b>CYLINDER ASSEMBLY D.85</b>
9	5-104183	CILINDRO COMPLETO D.55 CORSA 670	CYLINDER ASSEMBLY D.55
1801	4-330092	TUBO CILINDRO UNGHIA	HOSE TOOL CYLINDER
1802	4-330093	TUBO CILINDRO DISCO UNGHIA	HOSE CYLINDER DISC
1803	4-330094	TUBO CILINDRO DISCO STALLONATORE	HOSE BEAD CYLINDER
1804	4-330095	TUBO UTENSILE L.5200mm	HOSE TOOL L.5200mm
1807	4-330098	TUBO CILINDRO SOLLEVAMENTO	HOSE CYLINDER LIFT
1808	4-330099	TUBO CILINDRO SOLLEVAMENTO	HOSE CYLINDER LIFT
1809	4-330100	TUBO CILINDRO TRASLAZIONE	HOSE CYLINDER SHIFT
1810	4-330101	TUBO CILINDRO TRASLAZIONE	HOSE CYLINDER SHIFT
1811	4-330102	TUBO CILINDRO AUTOCENTRANTE	HOSE CYLINDER TURNTABLE
1812	4-330103	TUBO CILINDRO SOLLEVAMENTO	HOSE CYLINDER LIFT
1813	4-330104	TUBO CILINDRO SOLLEVAMENTO	HOSE CYLINDER LIFT
1814	4-330105	TUBO CILINDRO ROTAZIONE UT.	HOSE TOOL CYLINDER ROTATING
1815	4-330106	TUBO VALVOLA DI BLOCCO DISCO	HOSE VALVE
<b>1816</b>	<b>422674</b>	<b>TUBO CIL. AUTOCENTRANTE</b>	<b>HOSE CYLINDER TURNTABLE</b>







Via per Carpi, n°9 - 42015 Correggio (RE) ITALY  
Tel. ++39 0522 639111 - Fax ++39 0522 639150  
[www.corgchi.com](http://www.corgchi.com) - [info@corgchi.com](mailto:info@corgchi.com)

Code 4-329711F

Production date : 06 / 2014

Il disegno è realizzato con tutti i particolari ma solo quelli codificati sono forniti come ricambi. L'Azienda si riserva la facoltà di apportare modifiche senza preavviso.

The drawing shows all parts but only the coded parts are supplied as spares. The Company reserves the right to make modifications without prior notice.