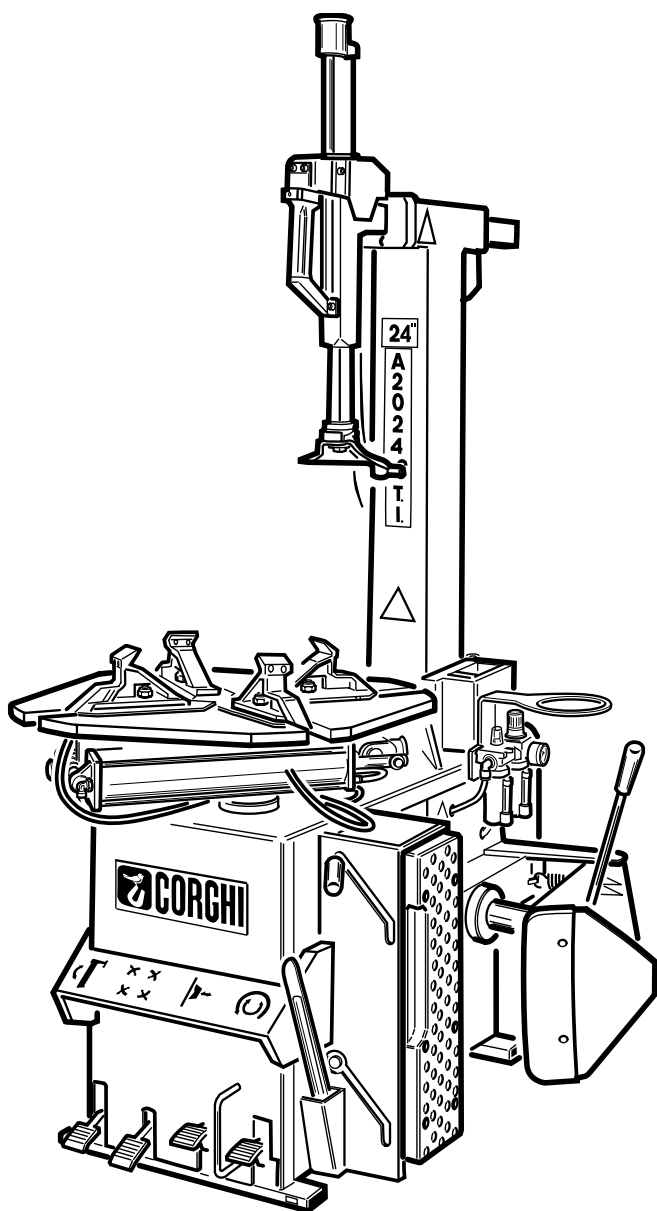


Questo libretto non autorizza l'utente ad intervenire sulle macchine ad esclusione di quanto esplicitamente descritto nel Manuale d'uso, ma consente all'utente di fornire informazioni precise all'Assistenza tecnica, al fine di ridurre i tempi di intervento.

A2024 T.I.

The "Spare parts" booklet does not authorize the user to carry out work on the machine unless expressly specified in the instruction manual, but does enable him to provide accurate information to the assistance service in order to reduce downtime.

PEZZI DI RICAMBIO SPARE PARTS LIST ERSATZTEILLISTE PIECES DE RECHANGE



Code

4-I03961C

In produzione da
Production from
Herstellung ab
Production

04 / 2010

Der Katalog Ersatzteile stellt keine Genehmigung zu eigenmächtigen Eingriffen dar (mit Ausnahme jener im Handbuch beschriebenen), sondern er soll den Anwender in die Lage versetzen, dem technischen Service präzise Informationen zu liefern, um die Reparaturzeiten zu verkürzen.



Le livret "Pièces de rechange", n'autorise pas l'utilisateur à intervenir sur les machines, sauf pour tout ce qui est clairement décrit dans le manuel d'utilisation, mais lui permet de fournir des informations précises à l'assistance technique, afin de diminuer les délais d'intervention.

I

Sul presente documento sono stati indicati in grassetto i codici che sono variati rispetto a quelli riportati nella precedente versione del 06/09

En

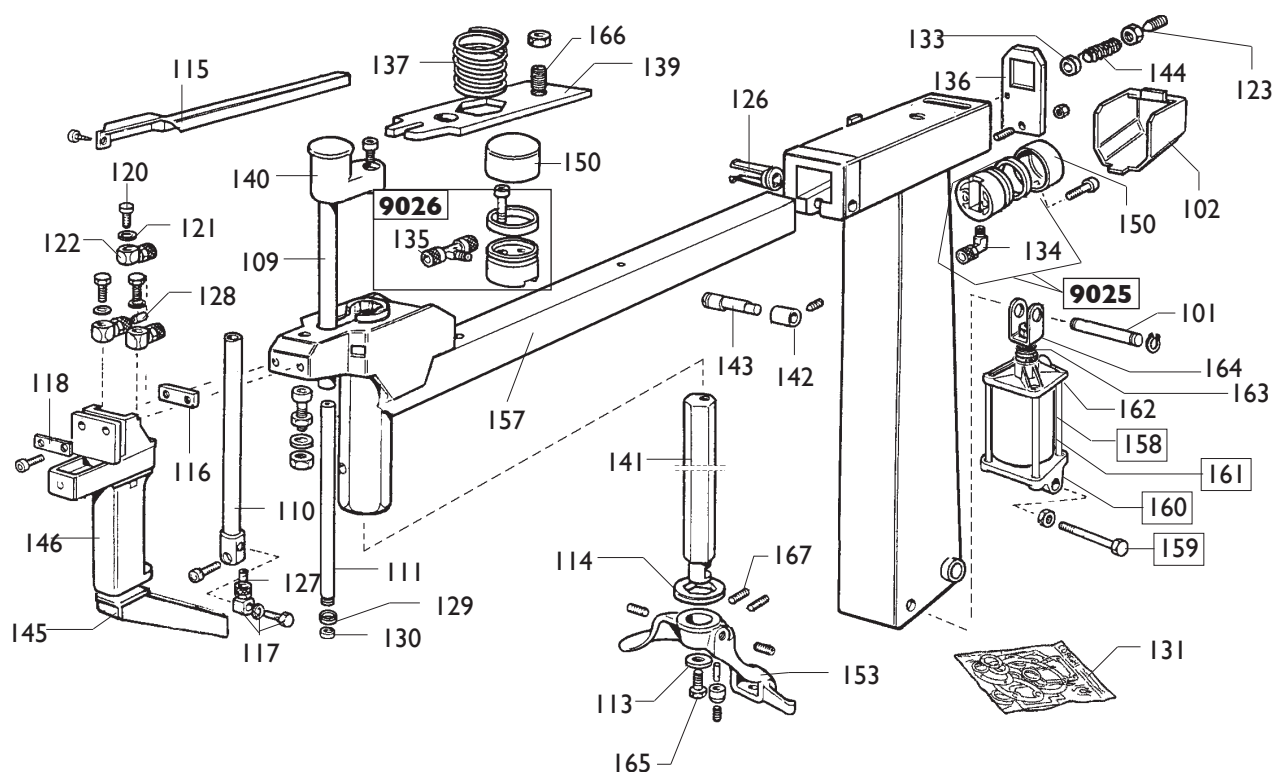
Codes that have changed from those given in the previous version dated 06/09 are indicated in bold type in this document

De

Die gegenüber der Vorgängerversion vom 06/09 geänderten Codes sind im vorliegenden Dokument fettgedruckt angegeben

Fr

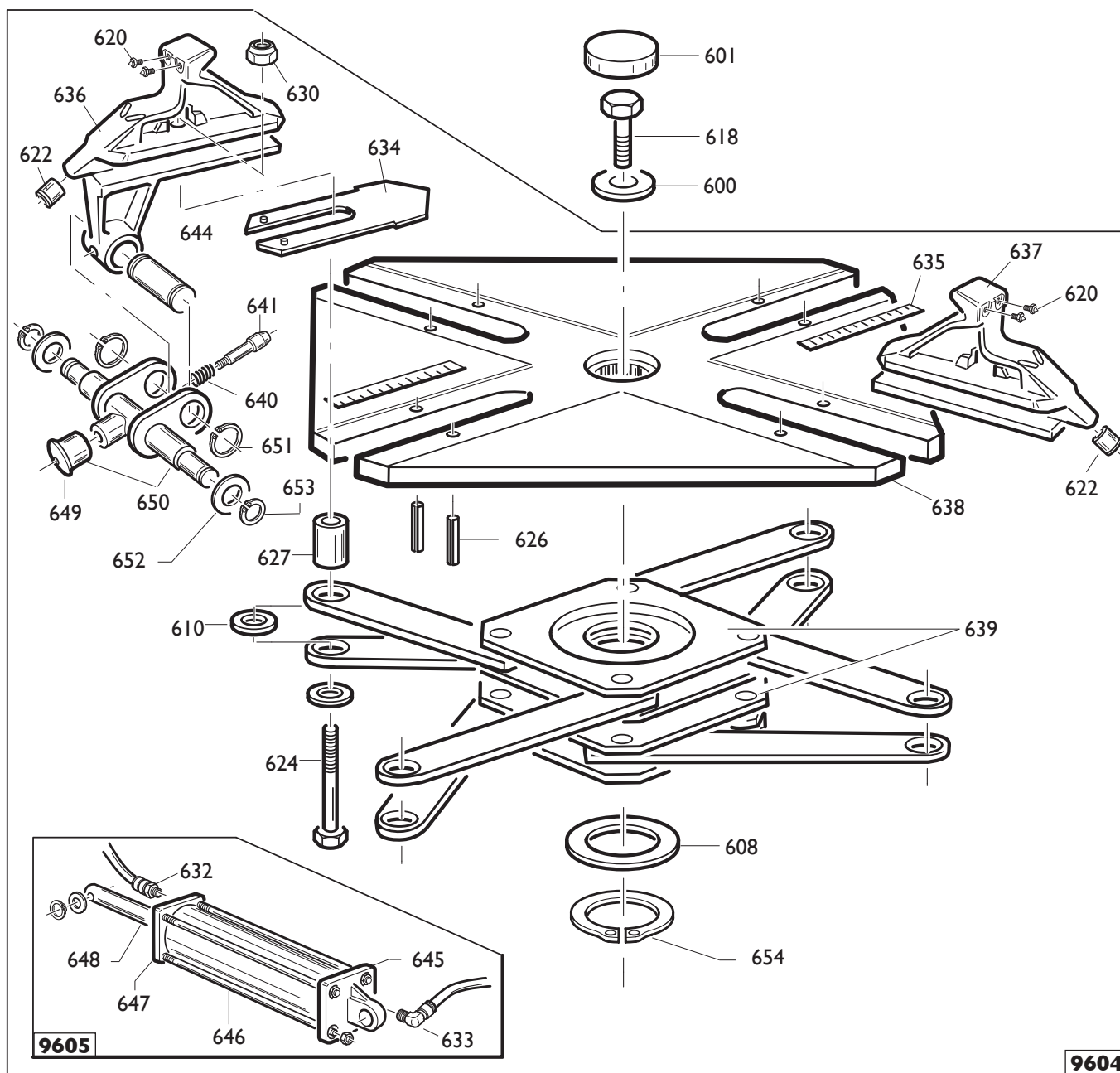
Ce document reporte en gras les codes qui ont été modifiés par rapport à ceux reportés dans la version précédente du mois de 06/09



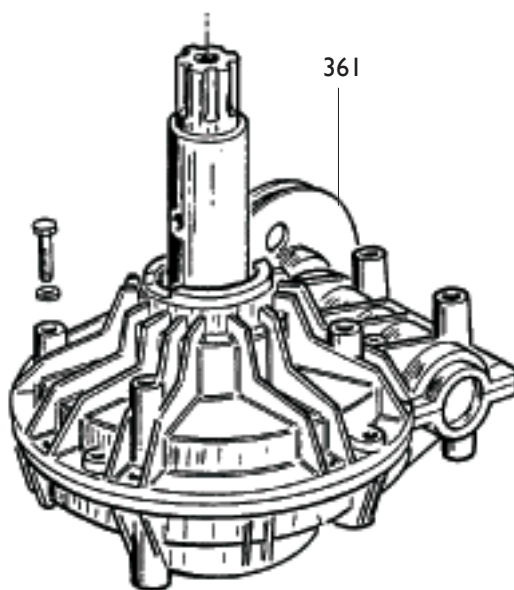
| | | | | | |
|------|----------|--------------------|-----------|-----------------|------------|
| 0101 | 326667 | PERNO SUP. | PIN | ZAPFEN | PIVOT |
| 0102 | 426773 | PROTEZIONE | SHIELD | ABDECKUNG | PROTECTION |
| 0109 | 338858 | TUBO | PIPE | ROHR | TUYAU |
| 0110 | 238856 | SUPPORTO | SUPPORT | LAGER | SUPPORT |
| 0111 | 338855 | STELO | STEM | SCHAFT | TIGE |
| 0113 | 350194 | RONDELLA | WASHER | UNTERLEGSCHIEBE | RONDELLE |
| 0114 | 428681 | ANELLO | RING | RING | ANNEAU |
| 0115 | 426763 | GUIDA | GUIDE | FUEHRUNG | GLISSIERE |
| 0116 | 327284 | PIASTRINA | PLATE | PLAETTCHEN | PLAQUETTE |
| 0117 | 5-102718 | RACCORDO | CONNECTOR | ANSCHLUSS | RACCORD |
| 0118 | 327283 | PIASTRINA | PLATE | PLAETTCHEN | PLAQUETTE |
| 0120 | 3-00070 | VITE | SCREW | SCHRAUBE | VIS |
| 0121 | 3-00452 | RONDELLA | WASHER | UNTERLEGSCHIEBE | RONDELLE |
| 0122 | 3-00079 | ANELLO | RING | RING | ANNEAU |
| 0123 | 341836 | VITE M12 | SCREW | | |
| 0126 | 431061 | BOCCOLA | BUSHING | LAGER | DOUILLE |
| 0127 | 327753 | STROZZATORE D.0,65 | THROTTLER | DROSSELKLAPPE | ETRANGLEUR |
| 0128 | 331783 | STROZZATORE D.1,25 | THROTTLER | DROSSELKLAPPE | ETRANGLEUR |
| 0129 | 427299 | GUARNIZIONE | SEAL | DICHTUNG | JOINT |
| 0130 | 432090 | ANELLO | RING | RING | ANNEAU |
| 0131 | 241484 | KIT GUARNIZIONI | SEALS KIT | DICHTUNGSATZ | KIT JOINTS |

| | | | | |
|--|--------------------|---------------|-----------------|-------------------------|
|  | A 2024 T.I. | Fig. A | 05B / 04 | Braccio operante |
|--|--------------------|---------------|-----------------|-------------------------|

| | | | | | |
|-------------|----------------|-----------------|----------------|---------------|----------|
| 0133 | 339803 | BOCCOLA | BUSHING | LAGER | DOUILLE |
| 9025 | 239805 | PISTONE | PISTON | KOLBEN | PISTON |
| 0134 | 3-00106 | RACCORDO | CONNECTOR | ANSCHLUSS | RACCORD |
| 9026 | 239806 | PISTONE | PISTON | KOLBEN | PISTON |
| 0135 | 3-00119 | RACCORDO | CONNECTOR | ANSCHLUSS | RACCORD |
| 0136 | 336142 | PIASTRA | SLAB | PLATTE | PLAQUE |
| 0137 | 440342 | MOLLA | SPRING | FEDER | RESSORT |
| 0139 | 340429 | PIASTRA | SLAB | PLATTE | PLAQUE |
| 0140 | 440428 | POMOLO | KNOB | BALLENGRIFF | POMMEAU |
| 0141 | 340430 | BRACCIO | ARM | ARM | BRAS |
| 0142 | 339782 | RULLO | ROLLER | WALZE | ROULEAU |
| 0143 | 339786 | PERNO | PIN | ZAPFEN | PIVOT |
| 0144 | 439787 | MOLLA | SPRING | FEDER | RESSORT |
| 0145 | 440692 | PROLUNGA | EXTENSION CORD | VERLAENGERUNG | RALLONGE |
| 0146 | 231744 | RUBINETTO | COCK | HAHN | ROBINET |
| 0150 | 326537 | CILINDRO | CYLINDER | ZYLINDER | CYLINDRE |
| 0153 | 258458 | TORRETTA | HEAD | DREHKOPF | TOURELLE |
| 0157 | 4-101588 | BRACCIO | ARM | ARM | BRAS |
| 0158 | 4-100825 | CILINDRO | CYLINDER | ZYLINDER | CYLINDRE |
| 0159 | 4-101715 | PERNO INFERIORE | PIN | | |
| 0160 | 338299 | FLANGIA POST. | FLANGE | | |
| 0161 | 4-100828 | CAMICIA | LINER | | |
| 0162 | 338300 | FLANGIA ANT. | FLANGE | | |
| 0163 | 4-100826 | STELO | ROD | | |
| 0164 | 323350 | CAVALLOTTO | SUPPORT | | |
| 0165 | 350197 | VITE | SCREW | | |
| 0166 | 2-01291 | VITE | SCREW | | |
| 0167 | 2-71357 | VITE M12 | SCREW | | |

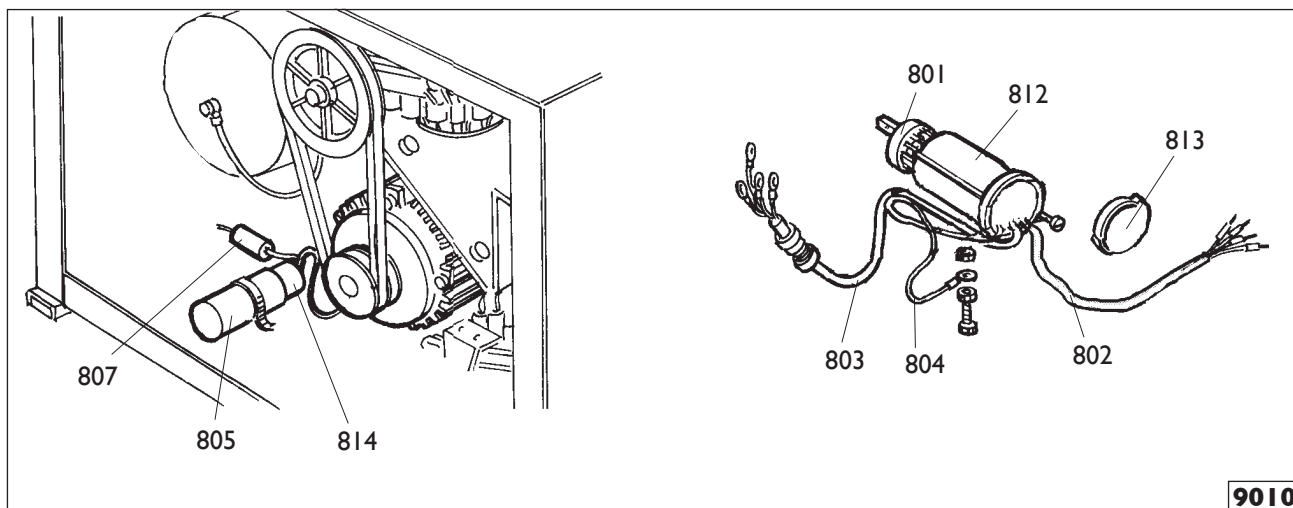
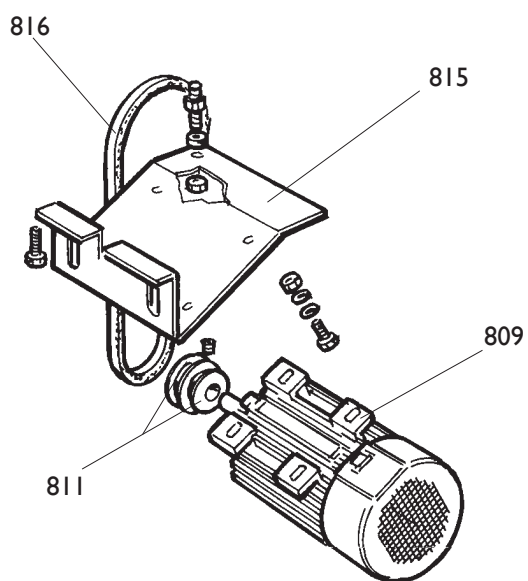


| | | | | | |
|------|----------|------------------------|------------------|--------------------|-------------------|
| 0600 | 323363 | RONDELLA | WASHER | UNTERLEGSCHIEBE | RONDELLE |
| 0601 | 426514 | TAPPO | PLUG | STOPFEN | BOUCHON |
| 0613 | 238548 | KIT GUARNIZIONI | SEALS KIT | DICHTUNGSATZ | KIT JOINTS |
| 0618 | 2-01216 | VITE | SCREW | SCHRAUBE | VIS |
| 9604 | 5-100507 | AUTOCENTRANTE T.I. | TURNTABLE T.I. | SPANNFUTTER T.I. | PLAT.AUTOC. T.I. |
| 0608 | 455082 | RONDELLA | WASHER | UNTERLEGSCHIEBE | RONDELLE |
| 0610 | 437964 | RONDELLA | WASHER | UNTERLEGSCHIEBE | RONDELLE |
| 0620 | 339146 | PUNTE DI BLOCC. | LOCKING PEAK | FESTKLEMMENSPIITZE | POINTE DE BLOCAGE |
| 0622 | 441100 | RACCORDO | CONNECTOR | ANSCHLUSS | RACCORD |
| 0624 | 2-02199 | VITE | SCREW | SCHRAUBE | VIS |
| 0626 | 2-01059 | SPINA | PLUG | STECKER | FICHE |
| 0627 | 353803 | BOCCOLA | BUSHING | LAGER | DOUILLE |
| 0630 | 2-02200 | DADO | NUT | MUTTER | ECROU |
| 0634 | 4-101441 | COPRIASOLA | COVER | LOCHSTOPFEN | BOUCHON |
| 0635 | 4-101456 | TARGHETTA | DATA PLATE | TYPENSHIELD | PLAQUETTE |
| 0636 | 5-100460 | APPOGG. T.I. TRAINANTE | RIM SUPPORT T.I. | STUETZE T.I. | APPUI T.I. |
| 0637 | 5-100459 | APPOGG. T.I. TRAINATO. | RIM SUPPORT T.I. | STUETZE T.I. | APPUI T.I. |
| 0638 | 4-101438 | PIATTO | PLATE | TELLER | PLAT |
| 0639 | 4-101651 | FLANGIA | FLANGE | FLANSCH | FLASQUE |
| 0640 | 4-101422 | MOLLA | SPRING | FEDER | RESSORT |
| 0641 | 4-101444 | INNESTO | PIN | ZAPFEN | PIVOT |
| 0649 | 4-109834 | POMOLO | KNOB | BALLENGRIFF | POMMEAU |
| 0650 | 5-103522 | MANOVELLA+POMOLO | CRANK | KURBEL | MANIVELLE |
| 0651 | 2-71587 | SEEGER D.20 | SEEGER | | |
| 0652 | 2.00214 | RONDELLA 12 | WASHER | | |
| 0653 | 2-00025 | SEEGER D.12 | SEEGER | | |
| 0654 | 2-01283 | SEEGER D.65 | SEEGER | | |
| 9605 | 5-100455 | CILINDRO DESTRO | CYLINDER RIGHT | ZYLINDER | CYLINDRE |
| 9605 | 5-100454 | CILINDRO SINISTRO | CYLINDER LEFT | ZYLINDER | CYLINDRE |
| 0632 | 3-02045 | RACCORDO | CONNECTOR | ANSCHLUSS | RACCORD |
| 0633 | 3-02044 | RACCORDO | CONNECTOR | ANSCHLUSS | RACCORD |
| 0644 | 4-101442 | PERNO | PIN | | |
| 0645 | 328573 | FLANGIA POST. | FLANGE | | |
| 0646 | 353785 | CAMICIA | LINER | | |
| 0647 | 328572 | FLANGIA ANT. | FLANGE | | |
| 0648 | 4-101430 | STELO | ROD | | |

9009

| | | | | |
|--|--------------------|---------------|-----------------|------------------|
|  | A 2024 T.I. | Fig. C | 05A / 04 | Riduttore |
|--|--------------------|---------------|-----------------|------------------|

| | | | | | |
|------|----------|-------------------------|---------------------|---------------|-----------|
| 9009 | 5-102647 | RIDUTTORE | GEAR BOX | GETRIEBE | REDUCTEUR |
| 9009 | 239555 | RIDUTTORE <i>pneum.</i> | GEAR BOX <i>air</i> | GETRIEBE | REDUCTEUR |
| 9009 | 5-102648 | RIDUTTORE DV | GEAR BOX | GETRIEBE | REDUCTEUR |
| 0361 | 319073 | PULEGGIA (pneum.) | PULLEY (air) | RIEMENSCHIEBE | POULIE |
| 0361 | 314344 | PULEGGIA | PULLEY | RIEMENSCHIEBE | POULIE |



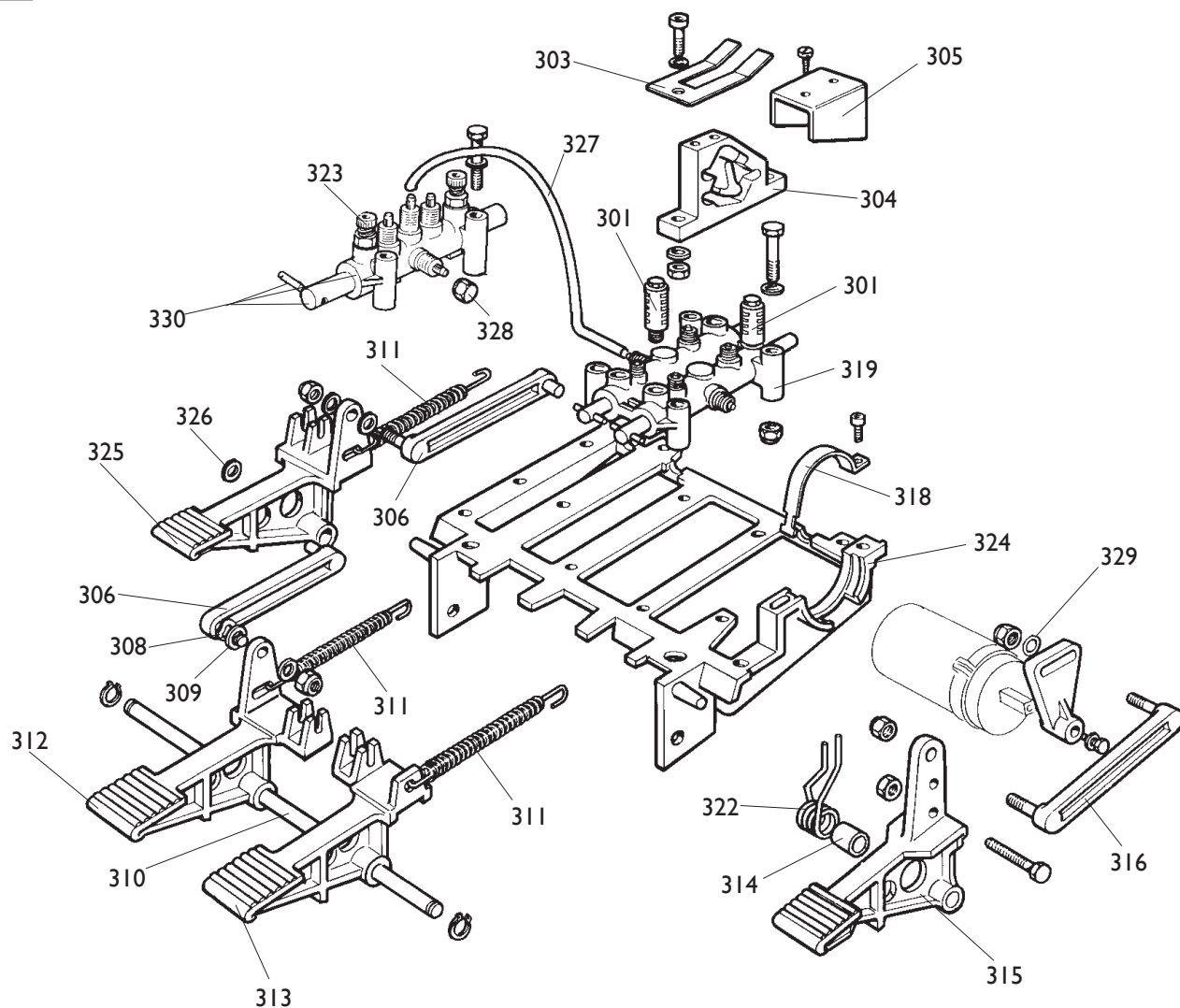
9010

| | | IMP. ELETTRICO | ELECTRIC SYSTEM | ELEKTRIS. ANLAGE | INS. ELECTRIQUE |
|------|----------|-----------------------|------------------------|-------------------------|------------------------|
| 9010 | 249882 | 110V I _{ph} | 110V I _{ph} | 110V I _{ph} | 110V I _{ph} |
| 0801 | 5-102741 | INVERTITORE | REVERSER | RICHTUNGSWENDER | INVERSEUR |
| 0802 | 230709 | CAVO RETE | CABLE | KABEL | CABLE |
| 0803 | 225419 | CAVO MOTORE | CABLE | KABEL | CABLE |
| 0804 | 225051 | CAVALLOTTO | U-BOLT | BUEGELBOLZEN | CRAMPILLON |
| 0805 | 430750 | CAPPELOTTO | CAP NUT | ABSCHLUSSKAPPE | CAPUCHON |
| 0807 | 430770 | RESISTENZA | RESISTANCE | WIDERSTAND | RESISTANCE |
| 0814 | 449751 | CONDENSATORE | CAPACITOR | KONDENSATOR | CONDENSATEUR |

| | C.S.A. | IMP. ELETTRICO | ELECTRIC SYSTEM | ELEKTRIS. ANLAGE | INS. ELECTRIQUE |
|------|---------------|-----------------------|------------------------|-------------------------|------------------------|
| 9010 | 5-101068 | 110V I _{ph} | 110V I _{ph} | 110V I _{ph} | 110V I _{ph} |
| 0801 | 5-102741 | INVERTITORE | REVERSER | RICHTUNGSWENDER | INVERSEUR |
| 0802 | 447801 | CAVO | CABLE | KABEL | CABLE |
| 0803 | 249590 | CAVO | CABLE | KABEL | CABLE |
| 0804 | 225051 | CAVALLOTTO | U-BOLT | BUEGELBOLZEN | CRAMPILLON |
| 0805 | 430750 | CAPPELOTTO | CAP NUT | ABSCHLUSSKAPPE | CAPUCHON |
| 0807 | 430770 | RESISTENZA | RESISTANCE | WIDERSTAND | RESISTANCE |
| 0814 | 449751 | CONDENSATORE | CAPACITOR | KONDENSATOR | CONDENSATEUR |

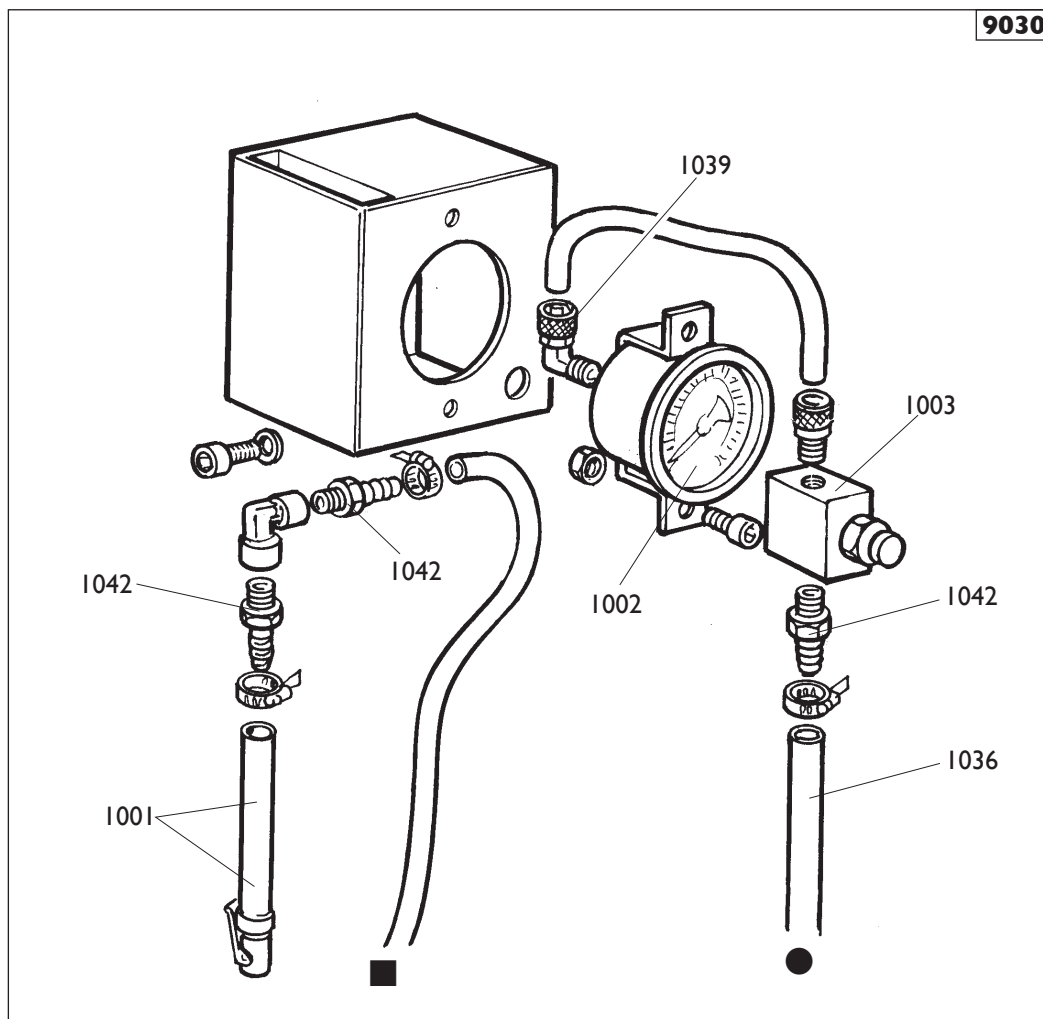
| | | MOTORE | MOTOR | MOTOR | MOTEUR |
|------|---------|---------------|--------------|----------------|---------------|
| 0809 | 451842 | 110V 60Hz | 110V 60Hz | 110V 60Hz | 110V 60Hz |
| 0811 | 331067 | PULEGGIA | PULLEY | RIEMENSCHLEIBE | POULIE |
| 0812 | 432065 | PROTEZIONE | SHIELD | ABDECKUNG | PROTECTION |
| 0813 | 430991 | COPERCHIO | LID | DECKEL | COUVERCLE |
| 0815 | 334768 | CULLA | CRADLE | WIEGE | BERCEAU |
| 0816 | 3-00555 | CINGHIA | BELT | RIEMEN | COURROIE |

9018

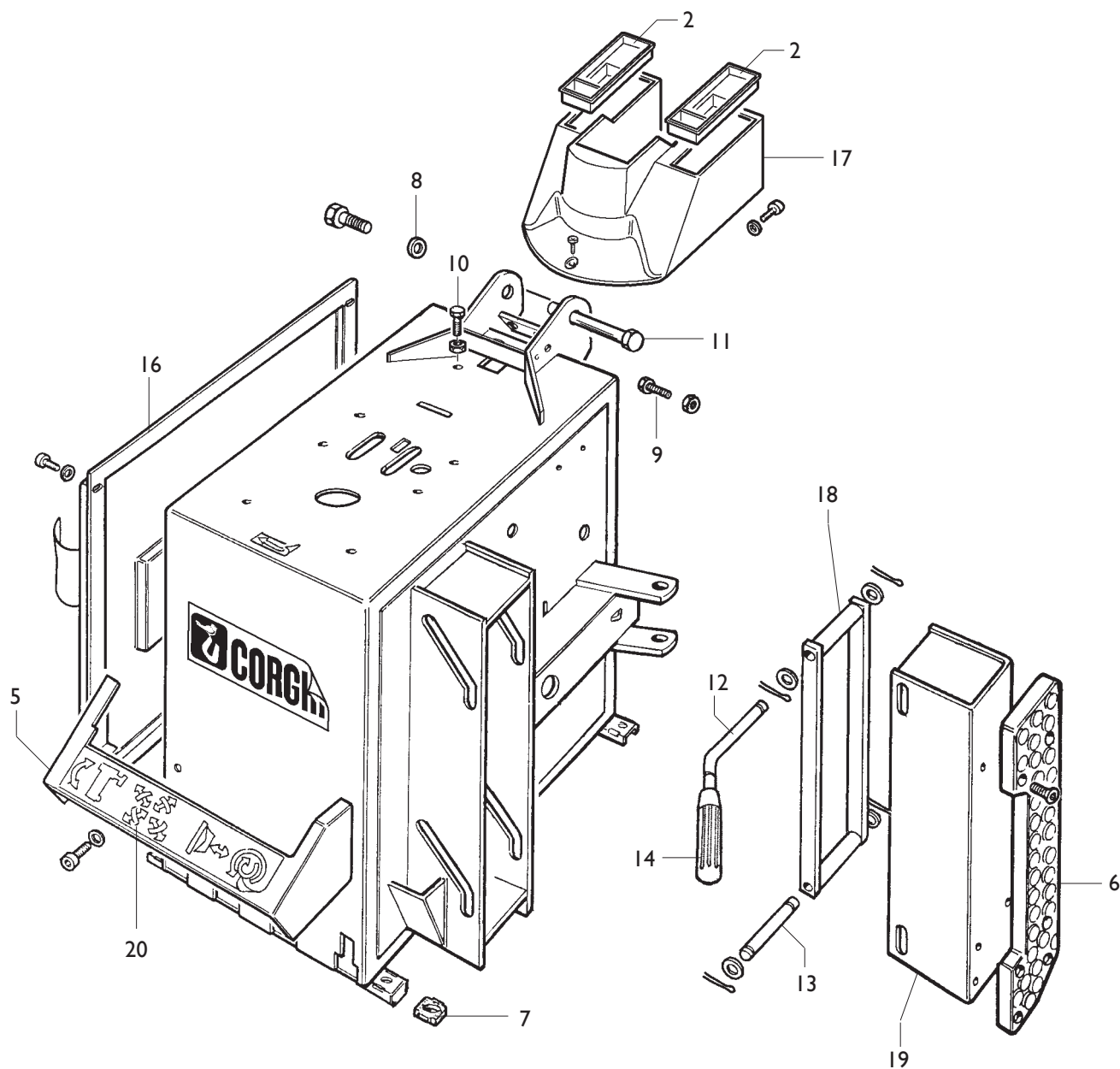


| | | | | |
|--|--------------------|---------------|-----------------|------------------|
|  | A 2024 T.I. | Fig. E | 05A / 04 | Pedaliere |
|--|--------------------|---------------|-----------------|------------------|

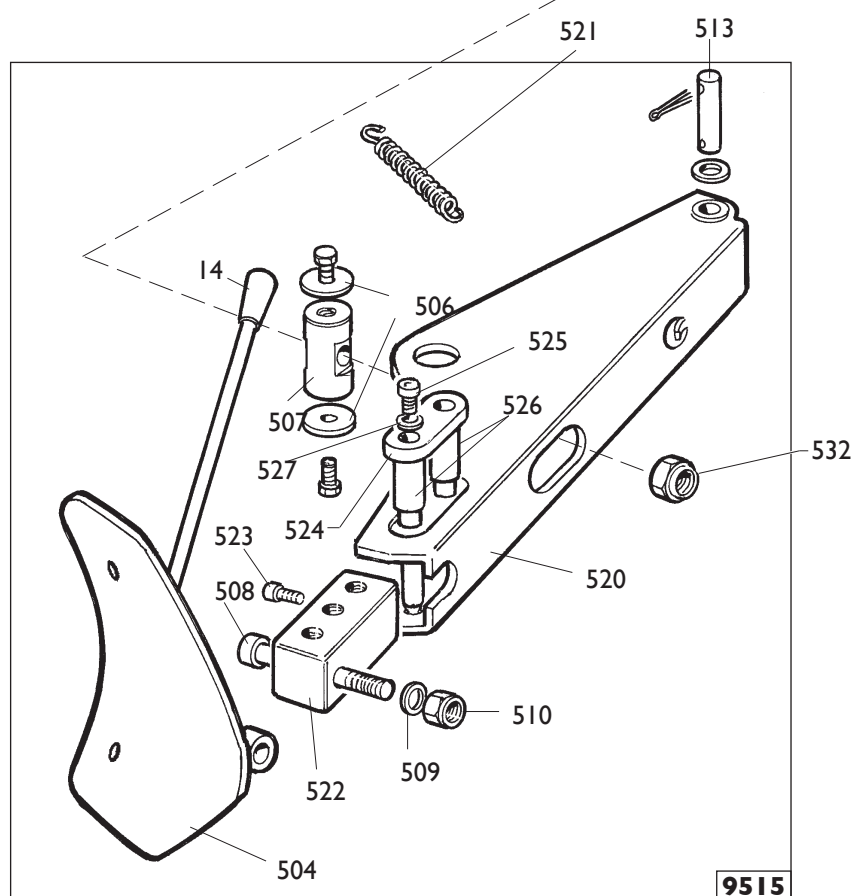
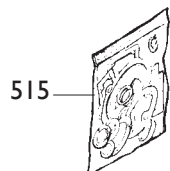
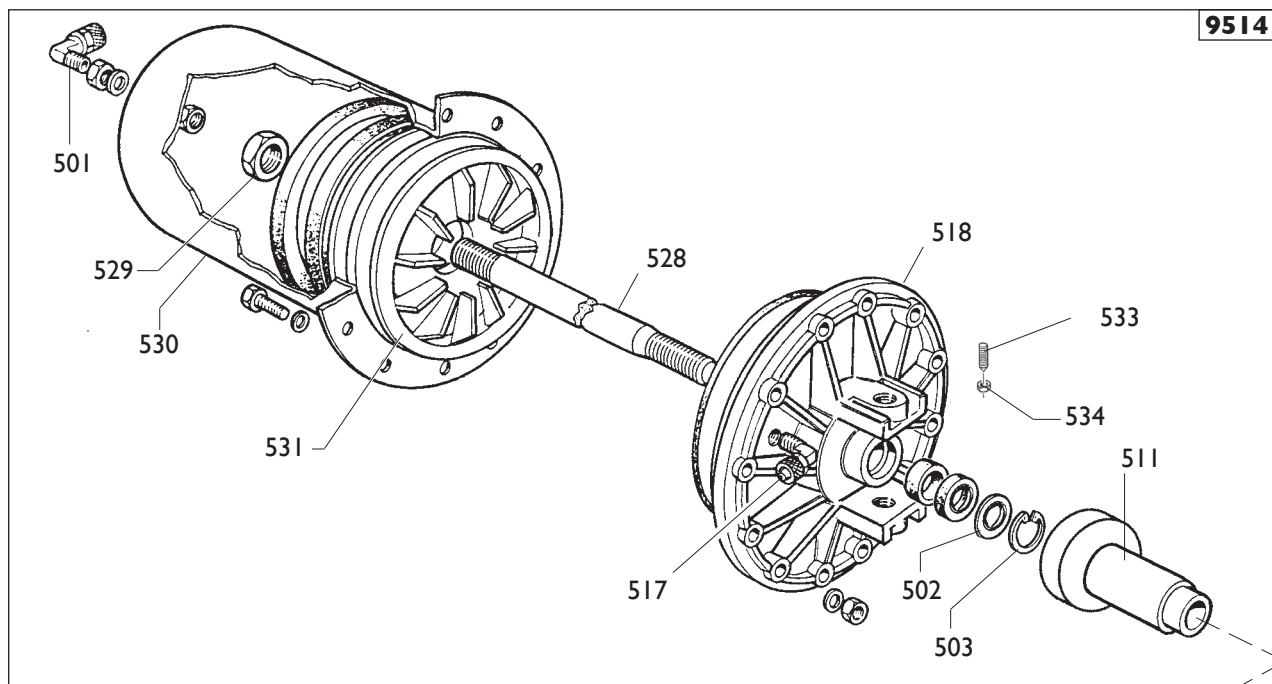
| | | | | | |
|------|----------|-------------------|---------------|-----------------|-------------------|
| 9018 | 233678 | PEDALIERA | CONTROL PEDAL | PEDALERIE | GR.PEDALES |
| 0301 | 3-00183 | SILENZIATORE | SILENCER | SCHALLDAEMPFER | SILENCIEUX |
| 0303 | 325019 | BALESTRA | LEAF SPRING | BLATTFEDER | RESSORT A LAMES |
| 0304 | 425020 | CAMMA | CAM | NOCKEN | CAME |
| 0305 | 325018 | CAVALLOTTO | U-BOLT | BUEGELBOLZEN | CRAMPILLON |
| 0306 | 425014 | BIELLA | TRACE | PLEUELSTANGE | BIELLE |
| 0308 | 2-02247 | RONDELLA | WASHER | UNTERLEGSCHIEBE | RONDELLE |
| 0309 | 309358 | RONDELLA | WASHER | UNTERLEGSCHIEBE | RONDELLE |
| 0310 | 325005 | PERNO | PIN | ZAPFEN | PIVOT |
| 0311 | 410628 | MOLLA | SPRING | FEDER | RESSORT |
| 0312 | 325031 | PEDALE AUTOCENTR. | PEDAL | PEDAL | PEDALE |
| 0313 | 325032 | PEDALE STALL. | PEDAL | PEDAL | PEDALE |
| 0314 | 325050 | DISTANZIALE | SPACER | ABSTANDSSTUECK | ENTRETOISE |
| 0315 | 5-102714 | PEDALE INVERT. | PEDAL | PEDAL | PEDALE |
| 0316 | 425010 | BIELLA | TRACE | PLEUELSTANGE | BIELLE |
| 0317 | 425027 | LEVA | LEVER | HEBEL | LEVIER |
| 0318 | 332495 | CAVALLOTTO | U-BOLT | BUEGELBOLZEN | CRAMPILLON |
| 0319 | 5-102739 | RUBINETTO DOPPIO | COCK | HAHN | ROBINET |
| 0321 | 316199 | GHIERA | NUT | NUTMUTTER | BAGUE |
| 0322 | 428682 | MOLLA | SPRING | FEDER | RESSORT |
| 0323 | 433675 | REGOLATORE | REGULATOR | REGLER | REGULATEUR |
| 0324 | 524273 | SUPPORTO | SUPPORT | LAGER | SUPPORT |
| 0325 | 325030 | PEDALE ALZAPALO | PEDAL | PEDAL | PEDALE |
| 0326 | 452011 | BOCCOLA | BUSHING | LAGER | DOUILLE |
| 0327 | 317610 | TUBO | PIPE | ROHR | TUYAU |
| 0328 | 383173 | TAPPO | PLUG | STOPFEN | BOUCHON |
| 0330 | 257137 | RUBINETTO SINGOLO | COCK | HAHN | ROBINET |



| | | | | | |
|------------------|---------|--------------------|---------------|---------------------|-----------------|
| Ø 6 | I-01684 | TUBO | PIPE | ROHR | TUYAU |
| Ø 8 | I-01683 | TUBO | PIPE | ROHR | TUYAU |
| Ø 10 | I-01875 | TUBO | PIPE | ROHR | TUYAU |
| 9030 | 252599 | SCATOLA - BAR/PSI | BOX - BAR/PSI | SCHACHTEL - BAR/PSI | BOITE - BAR/PSI |
| 9030 | 259565 | SCATOLA - KPA | BOX - KPA | SCHACHTEL - KPA | BOITE - KPA |
| 1001 | 235462 | TUBO | PIPE | ROHR | TUYAU |
| MANOMETRO | | | | | |
| 1002 | 3-00490 | BAR - PSI | BAR - PSI | BAR - PSI | BAR - PSI |
| 1002 | 3-00493 | KPA | KPA | KPA | KPA |
| 1003 | 235463 | VALVOLA | VALVE | VENTIL | VANNE |
| 1036 | 352614 | TUBO aria L.1900mm | PIPE | ROHR | TUYAU |
| 1039 | 3-00103 | RACCORDO | CONNECTOR | ANSCHLUSS | RACCORD |
| 1042 | 3-00007 | INNESTO | CLUTCH | KUPPLUNG | EMBRAYAGE |



| | | | | | |
|------|-----------|-------------------|-------------|-----------------|------------|
| 0002 | 428845 | COPERCHIO | LID | DECKEL | COUVERCLE |
| 0005 | 426768 | PROTEZIONE | SHIELD | ABDECKUNG | PROTECTION |
| 0006 | 436199 | APPOGGIO | RIM SUPPORT | STUETZE | APPUI |
| 0007 | 422019 | PIEDE | FOOT | FUSS | PIED |
| 0008 | 318183 | RONDELLA | WASHER | UNTERLEGSCHIEBE | RONDELLE |
| 0009 | 322348 | VITE M10x20 | SCREW | SCHRAUBE | VIS |
| 0010 | 900320191 | VITE M8x30 | SCREW | SCHRAUBE | VIS |
| 0011 | 900331055 | PERNO PALO | PIN | ZAPFEN | PIVOT |
| 0012 | 900339456 | PERNO MANIGLIA | PIN | ZAPFEN | PIVOT |
| 0013 | 900339046 | PERNO BIELLA | PIN | ZAPFEN | PIVOT |
| 0014 | 900425219 | MANOPOLA | KNOB | BALLENGRIFF | BOUTON |
| 0016 | 900341176 | COFANO | HOOD | HAUBE | COFFRE |
| 0017 | 4-109098 | PROTEZIONE | SHIELD | ABDECKUNG | PROTECTION |
| 0018 | 239050 | BIELLA | ROD | | |
| 0019 | 238911 | PROLUNGA APPOGGIO | SUPPORT | | |
| 0020 | 4-102232 | ADESIVO | LABEL | | |

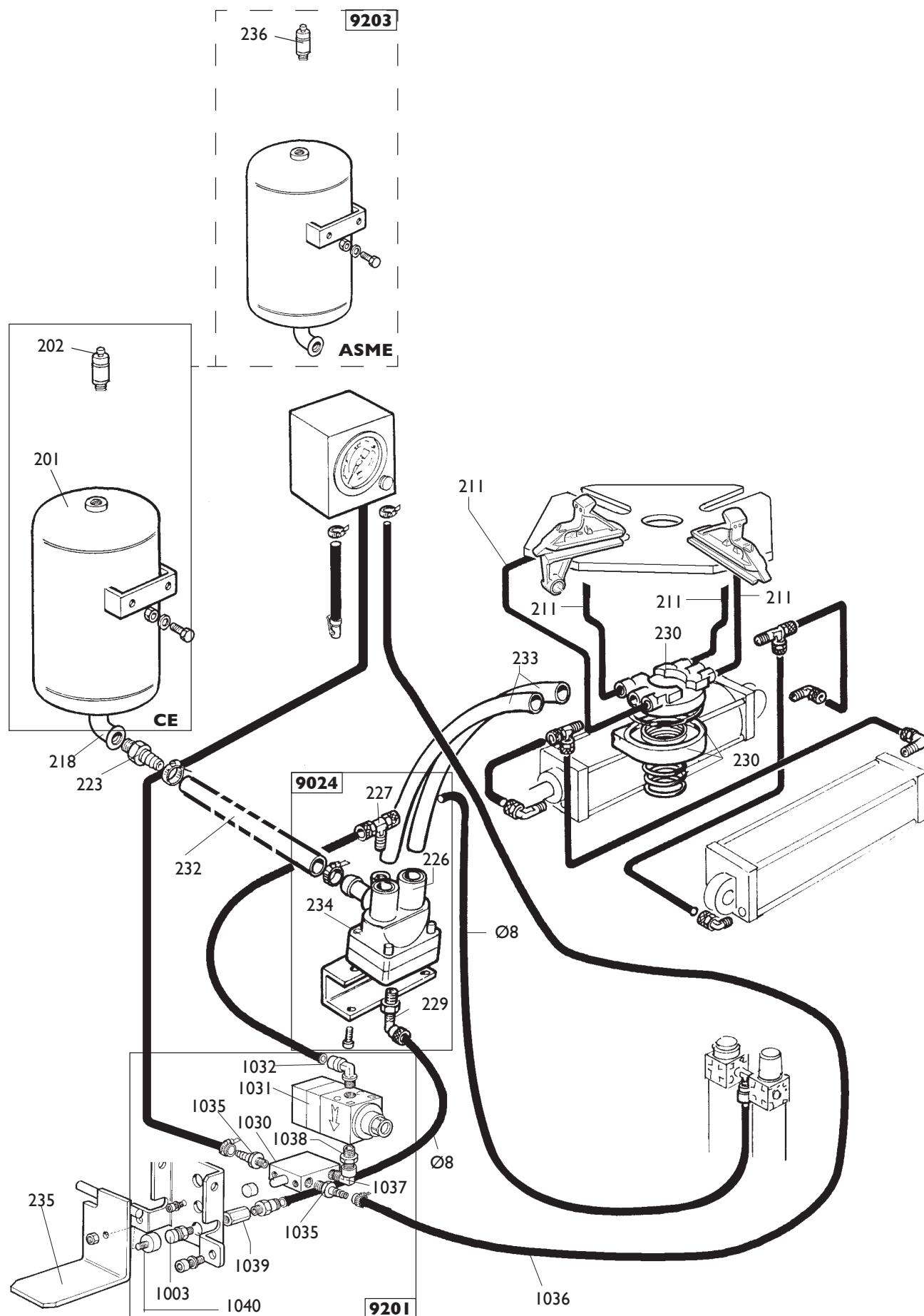


| | | | | |
|--|--------------------|---------------|-----------------|---------------------|
|  | A 2024 T.I. | Fig. I | 05B / 04 | Stallonatore |
|--|--------------------|---------------|-----------------|---------------------|

| | | | | | |
|------|----------|----------|-----------|-----------------|----------|
| 9514 | 5-100484 | CILINDRO | CYLINDER | ZYLINDER | CYLINDRE |
| 0501 | 3-00517 | RACCORDO | CONNECTOR | ANSCHLUSS | RACCORD |
| 0502 | 325561 | RONDELLA | WASHER | UNTERLEGSCHEIBE | RONDELLE |
| 0503 | 434031 | ANELLO | RING | RING | ANNEAU |
| 0517 | 3-001222 | RACCORDO | CONNECTOR | ANSCHLUSS | RACCORD |
| 0518 | 351905 | FLANGIA | FLANGE | FLANSCH | FLASQUE |

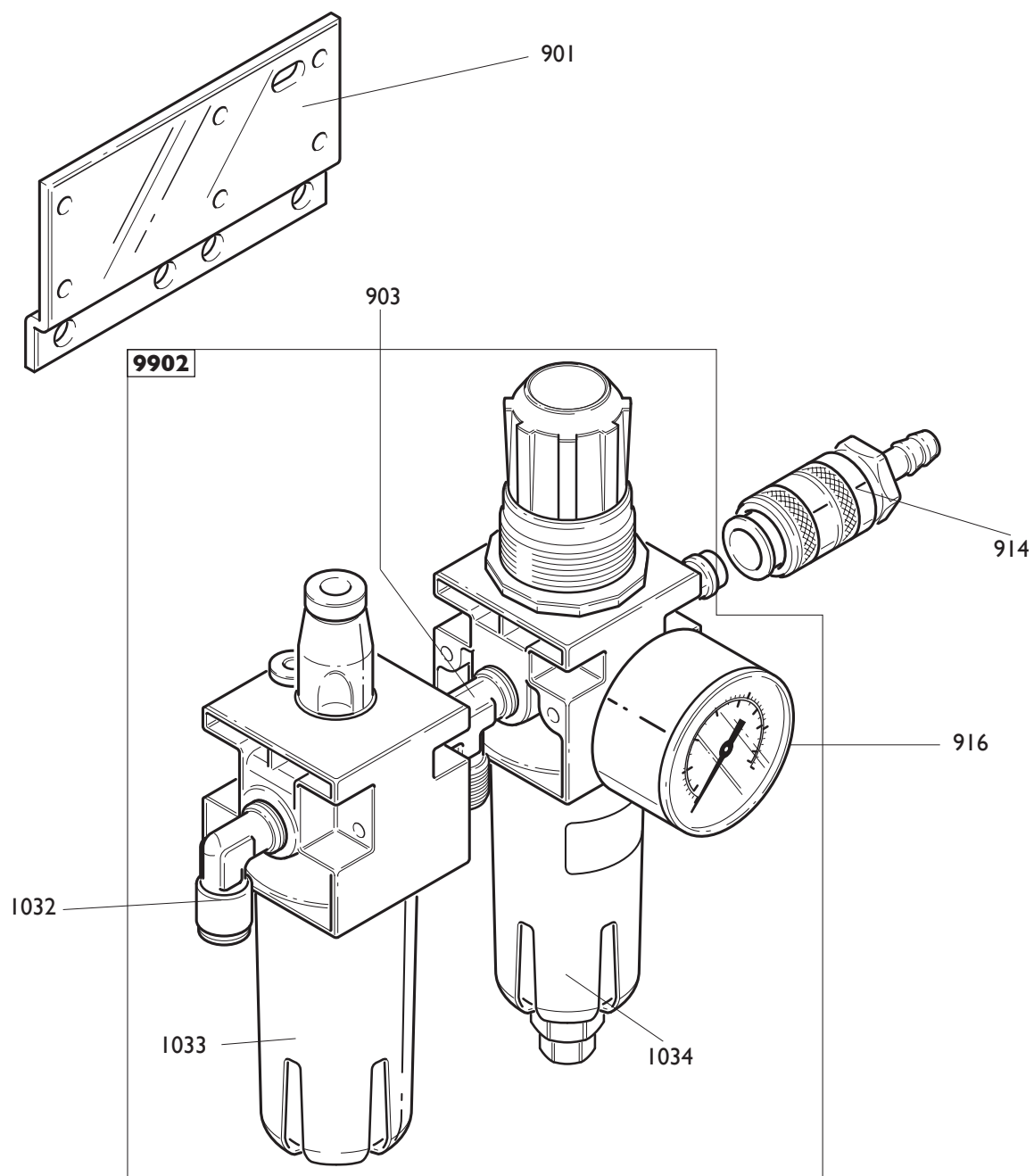
| | | | | | |
|------|---------|-------------|--------------|--------------------|----------|
| 9515 | 245743 | BRACCIO | ARM | ARM | BRAS |
| 0014 | 425219 | MANIGLIA | HANDLE | HANDGRIFF | POIGNEE |
| 0504 | 224000 | PALETTA | BEAD BREAKER | SCHAUFEL | PELLE |
| 0506 | 323901 | RONDELLA | WASHER | UNTERLEGSCHEIBE | RONDELLE |
| 0507 | 339045 | PERNO | PIN | ZAPFEN | PIVOT |
| 0508 | 324008 | VITE M12x90 | SCREW | | |
| 0509 | 2-02249 | RONDELLA | WASHER | UNTERLEGSCHEIBE | RONDELLE |
| 0510 | 422255 | DADO | NUT | MUTTER | ECROU |
| 0520 | 245701 | BRACCIO | ARM | ARM | BRAS |
| 0522 | 345618 | BLOCCHETTO | BLOCK | BLOCK | BLOC |
| 0523 | 2-00308 | VITE | SCREW | SCHRAUBE | VIS |
| 0524 | 345616 | FERMO | RETAINER | ANSCHLAG | ARRET |
| 0525 | 2-00372 | VITE | SCREW | SCHRAUBE | VIS |
| 0526 | 345617 | PUNTE | LOCKING | FESTKLEMMENSPIITZE | POINTE |
| 0527 | 2-01299 | RONDELLA | WASHER | UNTERLEGSCHEIBE | RONDELLE |

| | | | | | |
|-------------|----------------|-----------------|--------------|--------------|------------|
| 0511 | 239061 | TAMPONE | PAD | PUFFER | TAMPON |
| 0513 | 323903 | FULCRO | FULCRUM | DREHPUNKT | ENTABLURE |
| 0515 | 238212 | KIT GUARNIZIONI | SEALS KIT | DICHTUNGSATZ | KIT JOINTS |
| 0521 | 4-101930 | MOLLA | SPRING | FEDER | RESSORT |
| 0528 | 4-101628 | STELO | SHAFT | STEM | TIGE |
| 0529 | 2-00989 | DAMO M18 | NUT | | |
| 0530 | 330190 | CILINDRO | CYLINDER | | |
| 0531 | 337848 | PISTONE | PISTON | | |
| 0532 | 2-01242 | DADO M18 | NUT | | |
| 0533 | 431864 | VITE | SCREW | | |
| 0534 | 2-00992 | DADO M14 | NUT | | |



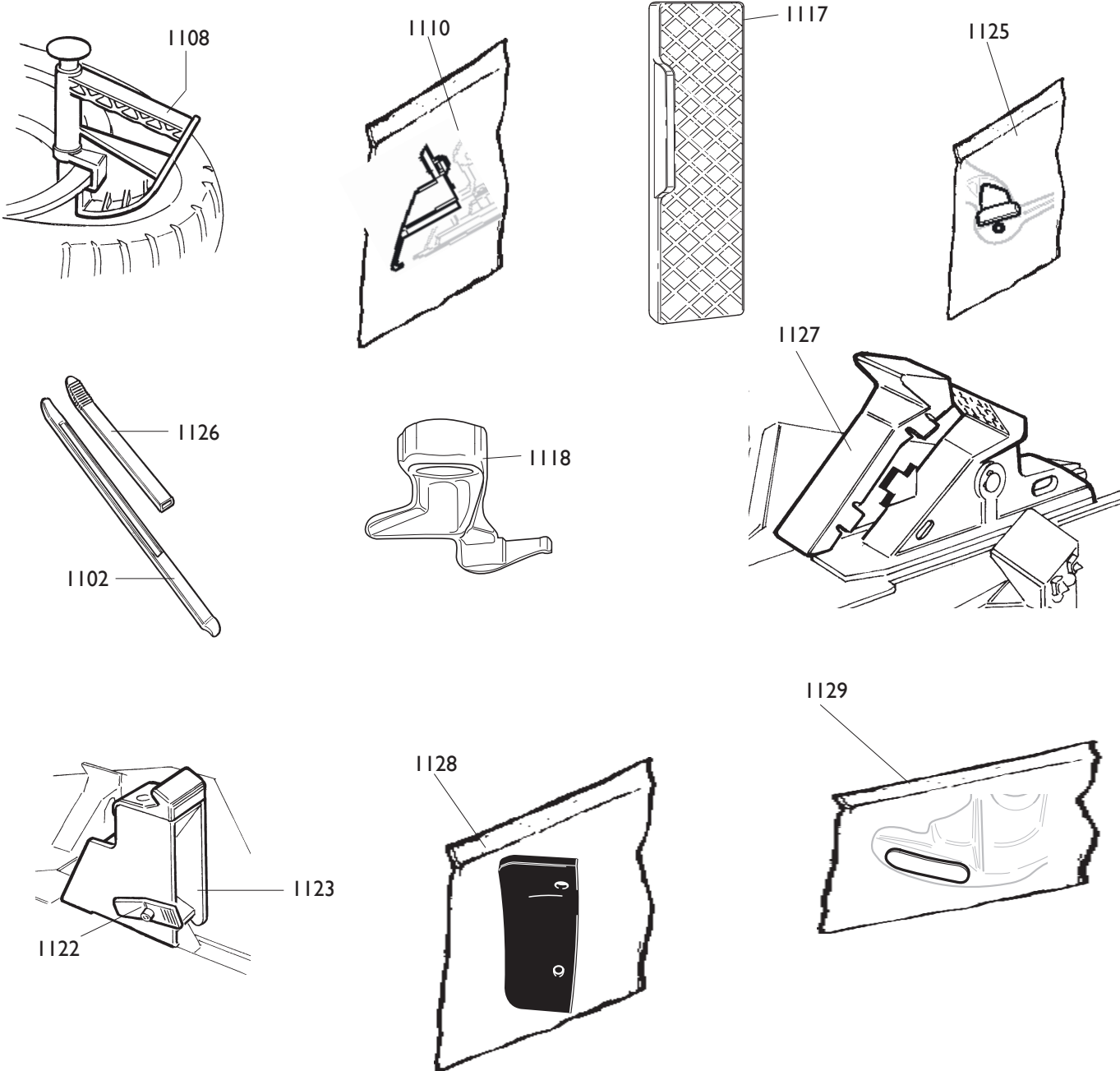
| | | | | |
|--|--------------------|---------------|----------------|----------------------|
|  | A 2024 T.I. | Fig. L | 04 / 10 | Versione T.I. |
|--|--------------------|---------------|----------------|----------------------|

| | | | | | |
|-------------|-----------------|-----------------------|------------------|------------------|-----------------------|
| Ø 6 | I-01684 | TUBO | PIPE | ROHR | TUYAU |
| Ø 8 | I-01683 | TUBO | PIPE | ROHR | TUYAU |
| 9203 | 5-100580 | SERBATOIO ASME | TANK ASME | TANK ASME | RESERVOIR ASME |
| 0236 | 3-00278 | VALVOLA | VALVE | VENTIL | VANNE |
| 0201 | 240968 | SERBATOIO CE | TANK | TANK | RESERVOIR |
| 0202 | 3-00356 | VALVOLA | VALVE | VENTIL | VANNE |
| 0211 | I-04223 | TUBO | PIPE | ROHR | TUYAU |
| 0218 | 438995 | RACCORDO | CONNECTOR | ANSCHLUSS | RACCORD |
| 0223 | 337704 | RACCORDO | CONNECTOR | ANSCHLUSS | RACCORD |
| 0235 | 252625 | PEDALE | PEDAL | PEDAL | PEDALE |
| 9024 | 242290 | VALVOLA | VALVE | VENTIL | VANNE |
| 0226 | 3-00403 | CARTUCCIA | CARTRIDGE | EINSATZ | CARTOUCHE |
| 0227 | 3-00287 | RACCORDO | CONNECTOR | ANSCHLUSS | RACCORD |
| 0229 | 3-00051 | RACCORDO | CONNECTOR | ANSCHLUSS | RACCORD |
| 0234 | 243020 | VALVOLA | VALVE | VENTIL | VANNE |
| 0230 | 241841 | RACCORDO | CONNECTOR | ANSCHLUSS | RACCORD |
| 0232 | 342288 | TUBO | PIPE | ROHR | TUYAU |
| 0233 | 342289 | TUBO | PIPE | ROHR | TUYAU |
| 9201 | 252568 | GRUPPO gonfiaggio | ASSEMBLY | GRUPPE | GROUPE |
| 1003 | 235463 | VALVOLA | VALVE | VENTIL | VANNE |
| 1030 | 3-00365 | VALVOLA | VALVE | VENTIL | VANNE |
| 1031 | 3-00432 | VALVOLA | VALVE | VENTIL | VANNE |
| 1032 | 3-00221 | RACCORDO | CONNECTOR | ANSCHLUSS | RACCORD |
| 1035 | 3-00004 | INNESTO | CLUTCH | KUPPLUNG | EMBRAYAGE |
| 1036 | 352614 | TUBO aria L.1900mm | PIPE | ROHR | TUYAU |
| 1037 | 3-00138 | RACCORDO | CONNECTION | | |
| 1038 | 3-00135 | NIPPLO | CONNECTION | NIPPEL | NIPPLE |
| 1039 | 338576 | DISTANZIALE | SPACE | | |
| 1040 | 452624 | ANTIVIBRANTE | ANTISHOCK | | |



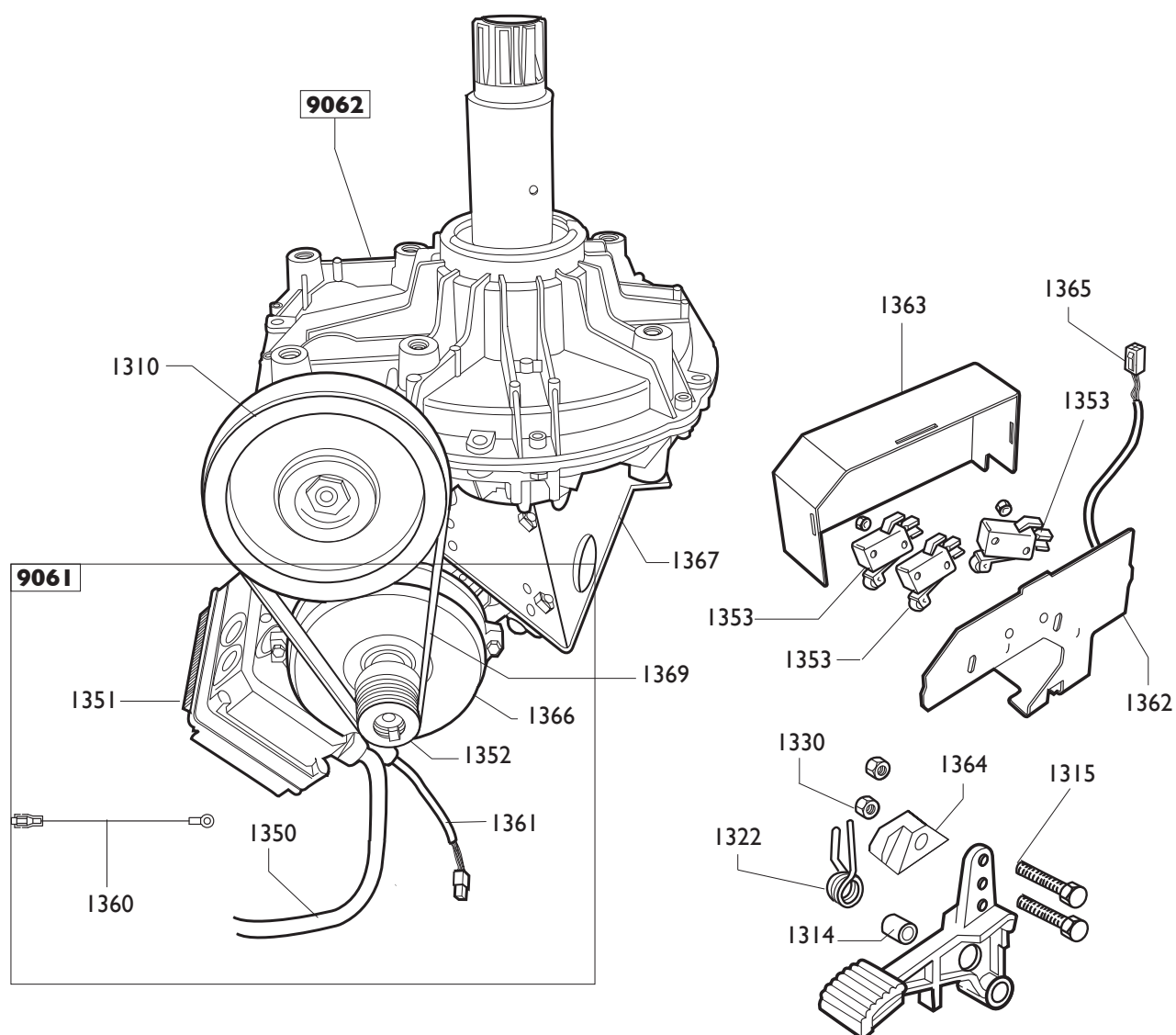
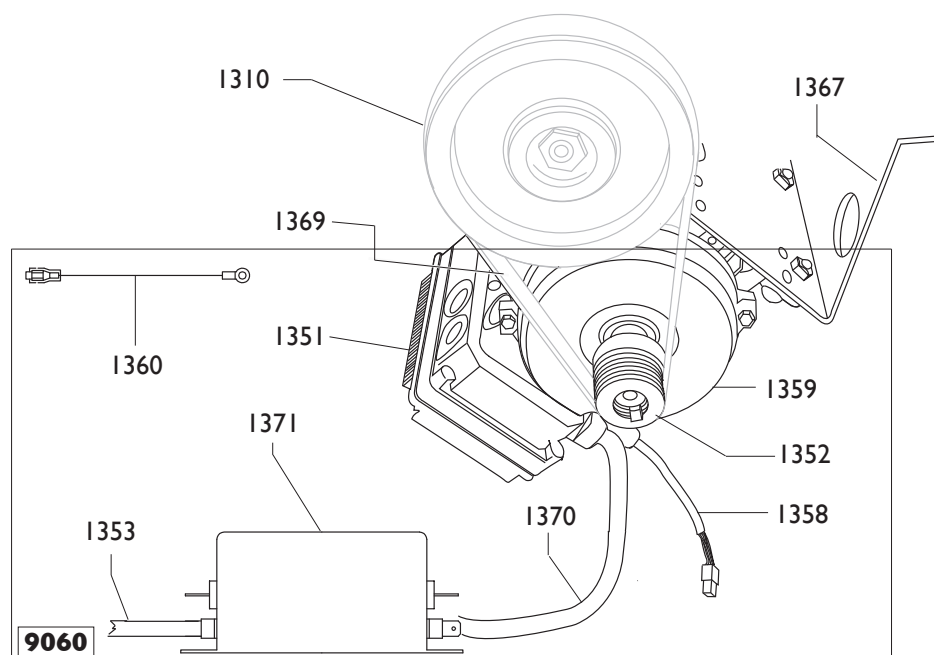
| | | | | |
|--|--------------------|---------------|-----------------|----------------------|
|  | A 2024 T.I. | Fig. M | 05A / 04 | Gruppo filtro |
|--|--------------------|---------------|-----------------|----------------------|

| | | | | | |
|------|---------|-------------------|----------------|-------------|--------------|
| 0901 | 335695 | STAFFA | BRACKET | KLAUE | ETRIER |
| 0903 | 3-00001 | RACCORDO | CONNECTOR | ANSCHLUSS | RACCORD |
| 9902 | 456522 | FILTRO | FILTER | FILTER | FILTRE |
| 1033 | 457511 | BICCHIERE LUBRIF. | BOWL | GLAS | BOL |
| 1034 | 457512 | BICCHIERE FILTRO | BOWL | GLAS | BOL |
| 0914 | 3-00257 | GIUNTO | CUOPLING | KUPPLUNG | ACCOUPLEMENT |
| 0916 | 3-00488 | MANOMETRO | PRESSURE GAUGE | DRUCKMESSER | MANOMETRE |
| 1032 | 3-00221 | RACCORDO | CONNECTOR | ANSCHLUSS | RACCORD |



| | | | | |
|--|--------------------|---------------|-----------------|------------------|
|  | A 2024 T.I. | Fig. N | 01A / 06 | Accessori |
|--|--------------------|---------------|-----------------|------------------|

| | | | | | |
|------|------------|---------------------|-------------|-----------------|---------------|
| 1102 | 4-108275 | LEVA | LEVER | HEBEL | LEVIER |
| 1108 | 801435685 | PINZA | PLIERS | ZANGE | PINCE |
| 1110 | 8-11100109 | KIT 12 PROT.EST. | SHIELD | ABDECKUNG | PROTECTION |
| 1117 | 801458663 | PROTEZIONE | SHIELD | ABDECKUNG | PROTECTION |
| 1118 | 801252083 | KIT TORRETTA 8" | HEAD KIT 8" | DREHKOPF KIT 8" | TOUREL KIT 8" |
| 1122 | 801258650 | KIT 4 ATTACCHI MOTO | ADAPTOR | HALTERUNG | ATTACHE |
| 1123 | 426746 | CRICCHETTO | CRICK | SPERRKLINKE | CLIQUET |
| 1125 | 8-11100106 | KIT 10 INSERTI | INSERT | EINLAGE | INSERT |
| 1126 | 8-11100104 | KIT 6 PROT.LEVA | SHIELD | ABDECKUNG | PROTECTION |
| 1127 | 8-11100108 | KIT 12 PROT.CUNEO | SHIELD | ABDECKUNG | PROTECTION |
| 1128 | 8-11100105 | KIT 6 PROT.PALETТА | SHIELD | ABDECKUNG | PROTECTION |
| 1129 | 8-11100107 | KIT 5 PASTIGLIE | INSERT | EINLAGE | INSERT |



| <i>MOTORE+INV 2 CONDENSATORI</i> | | | | <i>MOTOR+REV.</i> | |
|----------------------------------|----------|---------------------------------------|--------------|-------------------|---------------|
| 9060 | 5-101153 | 200-230V 1ph | 200-230V 1ph | 200-230V 1ph | 200-230V 1ph |
| 1351 | 4-108154 | SCHEDA ELETTR. 230V | P.C.BOARD | ELEKTR.PLATINE | FICHE ELECTR. |
| 1352 | 4-102397 | PULEGGIA | PULLEY | RIEMENSCHIEBE | POULIE |
| 1353 | 4-109893 | CAVO RETE | CABLE | | |
| 1358 | 4-109895 | CAVO COMANDI 230V | CABLE | | |
| 1359 | 4-109821 | MOTORE(SENZA SCHEDA)200-230/1/50-60HZ | | MOTOR | |
| 1360 | 4-103316 | CAVO TERRA | CABLE | | |
| 1370 | 4-109894 | CAVO ALIM.MOTORE | CABLE | | |
| 1371 | 4-109914 | FILTRO RETE | FILTER | | |

| <i>MOTORE+INV</i> | | <i>MOTOR+REV.</i> | <i>MOTOR+RICHTUNGSW.</i> | <i>MOTEUR+INV.</i> |
|-------------------|----------|---------------------|--------------------------|--------------------|
| 9061 | 5-101507 | 115V 1ph | 115V 1ph | 115V 1ph |
| 1350 | 4-104806 | CAVO RETE | CABLE | CABLE |
| 1351 | 4-105910 | SCHEDA ELETTR. 115V | P.C.BOARD | ELEKTR.PLATINE |
| 1352 | 4-102397 | PULEGGIA | PULLEY | RIEMENSCHIEBE |
| 1360 | 4-101659 | CAVO TERRA | CABLE | |
| 1361 | 4-101692 | CAVO COMANDI 115V | CABLE | |
| 1366 | 4-103880 | MOTOINVERTER 115V | MOTOINVERTER 115V | |

| | | | | | |
|------|----------|-----------|----------|---------------|-----------|
| 9062 | 5-102648 | RIDUTTORE | GEAR BOX | GETRIEBE | REDUCTEUR |
| 1310 | 339870 | PULEGGIA | PULLEY | RIEMENSCHIEBE | POULIE |

| | | | | | |
|------|----------|------------------------|-------------|----------------|-----------------|
| 1315 | 5-102714 | PEDALE | PEDAL | PEDAL | PEDALE |
| 1314 | 325050 | DISTANZIALE | SPACER | ABSTANDSSTUECK | ENTRETOISE |
| 1322 | 428682 | MOLLA | SPRING | FEDER | RESSORT |
| 1353 | 440874 | MICROINTERUTORE | MICROSWITCH | MIKROSCHALTER | MICROINTERRUPT. |
| 1330 | 346008 | BOCCOLA | BUSHING | LAGER | DOUILLE |
| 1362 | 4-102401 | SUPPORTO MICRO | SUPPORT | | |
| 1363 | 4-102402 | COPERCHIO | CASING | | |
| 1364 | 461535 | SUPPORTO MICRO | SUPPORT | | |
| 1365 | 4-101693 | CAVO COMANDI PEDALIERA | | CABLE | |
| 1367 | 4-109965 | CULLA MOTORE 230/115V | | SUPPORT | |
| 1369 | 3-00573 | CINGHIA | BELT | | |

A large rectangular area containing 20 horizontal dotted lines, spaced evenly, intended for writing or drawing.

.....

.....

.....

.....

.....

.....

.....

.....

.....

.....

.....

.....

.....

.....

.....

.....

.....

.....

.....

.....

.....

Il disegno è realizzato con tutti i particolari ma solo quelli codificati sono forniti come ricambi. L'Azienda si riserva la facoltà di apportare modifiche senza preavviso.



Strada Statale 468, n°9 - 42015 Correggio (RE) ITALY
Tel. ++39 0522 639111 - Fax ++39 0522 639150
www.corgi.com - info@corgi.com

The drawing shows all parts but only the coded parts are supplied as spares. The Company reserves the right to make modifications without prior notice.

COMIM - Cod. 4-103961C - 0410.