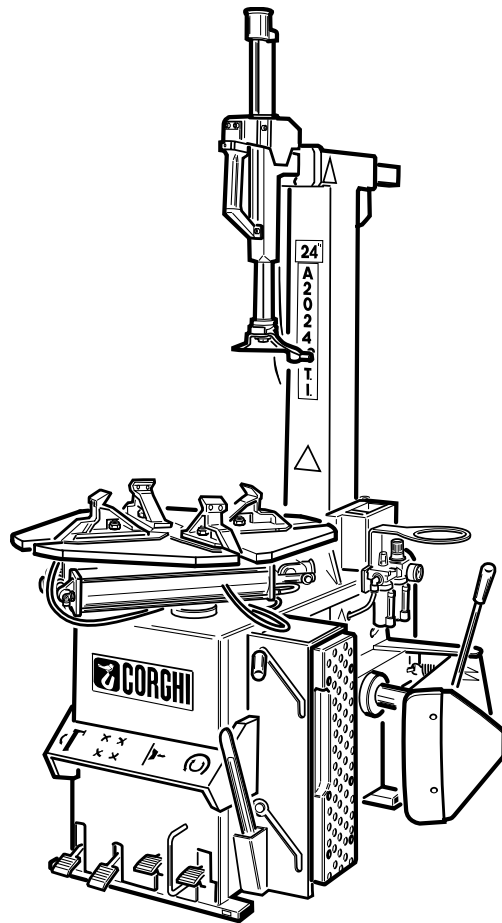


A2024 TI

Pezzi di ricambio / Spare parts list



Code: 4-103961J

Production date: 07 / 2019



www.corgi.com - info@corgi.com

I

Sul presente documento sono stati evidenziati con colore grigio i ricambi consigliati e indicati in grassetto i codici che sono variati rispetto a quelli riportati nella precedente versione del 04/17

EN

In this document, the recommended spare parts have been highlighted in gray, while in bold you find those codes which are different if compared with the previous version dated 04/17

DE

Im vorliegenden Dokument wurden die empfohlenen Ersatzteile in grauer Farbe hervorgehoben; die Teilenummern in Fettdruck haben sich beziehend auf die vorherige Version vom 04/17 geändert.

FR

Dans ce document, les pièces de rechange préconisées sont soulignées en gris, tandis que les références différentes par rapport à la version précédente du 04/17 sont en gras

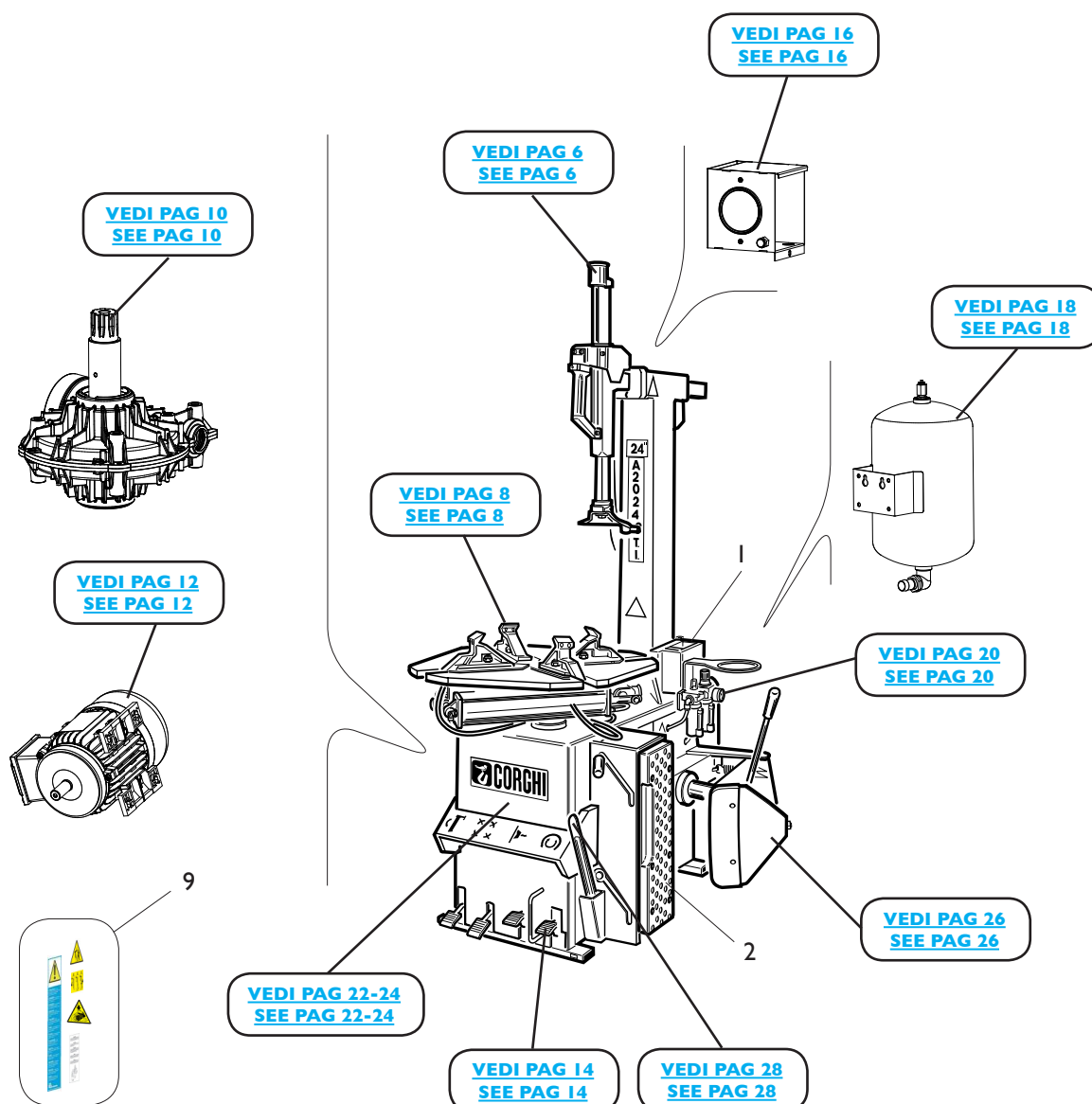
SOMMARIO

CONTENTS

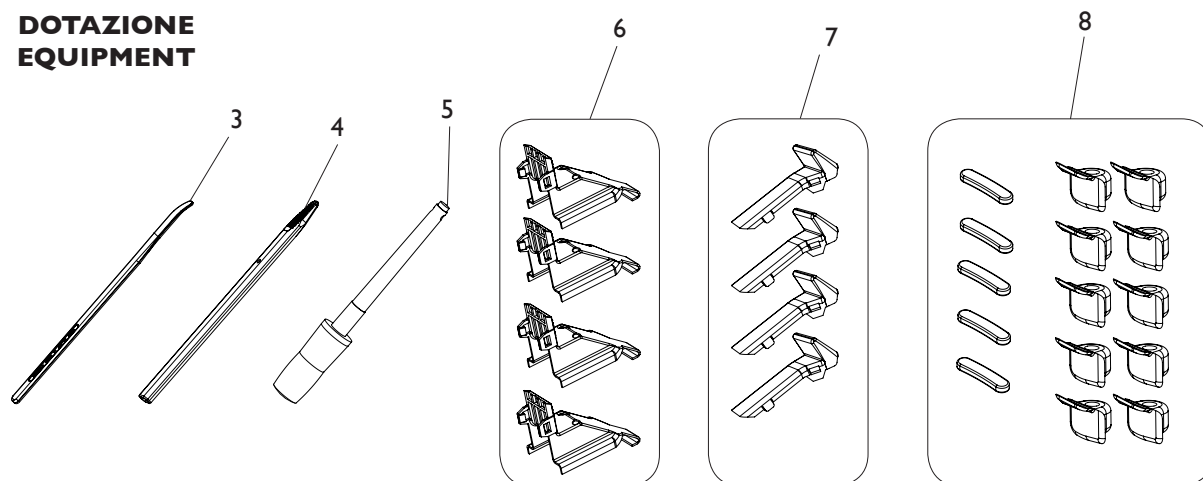
| | |
|------------------------------|----|
| COMPLESSIVO A2024 TI | |
| A2024 TI OVERALL..... | 4 |
| GRUPPO BRACCIO OPERANTE | |
| OPERATING ARM GROUP | 6 |
| GR. AUTOCENTRANTE 10-24” | |
| TURNTABLE GROUP 10-24” | 8 |
| GRUPPO RIDUTTORE | |
| GEARBOX GROUP | 10 |
| IMPIANTO ELETTRICO | |
| ELECTRICAL SYSTEM | 12 |
| GRUPPO PEDALIERA | |
| PEDAL GROUP | 14 |
| GRUPPO GONFIAGGIO | |
| INFLATION GROUP | 16 |
| GRUPPO GONFIAGGIO T.I. | |
| T.I. INFLATION GROUP | 18 |
| GRUPPO FILTRO | |
| FILTER GROUP | 20 |
| GRUPPO CASSONE OLD | |
| OLD FRAME GROUP | 22 |
| GRUPPO CASSONE NEW | |
| NEW FRAME GROUP | 24 |
| GRUPPO STALLONATORE | |
| BEAD BREAKING GROUP | 26 |
| ACCESSORI | |
| ACCESSORIES | 28 |

COMPLESSIVO A2024 TI

A2024 TI OVERALL

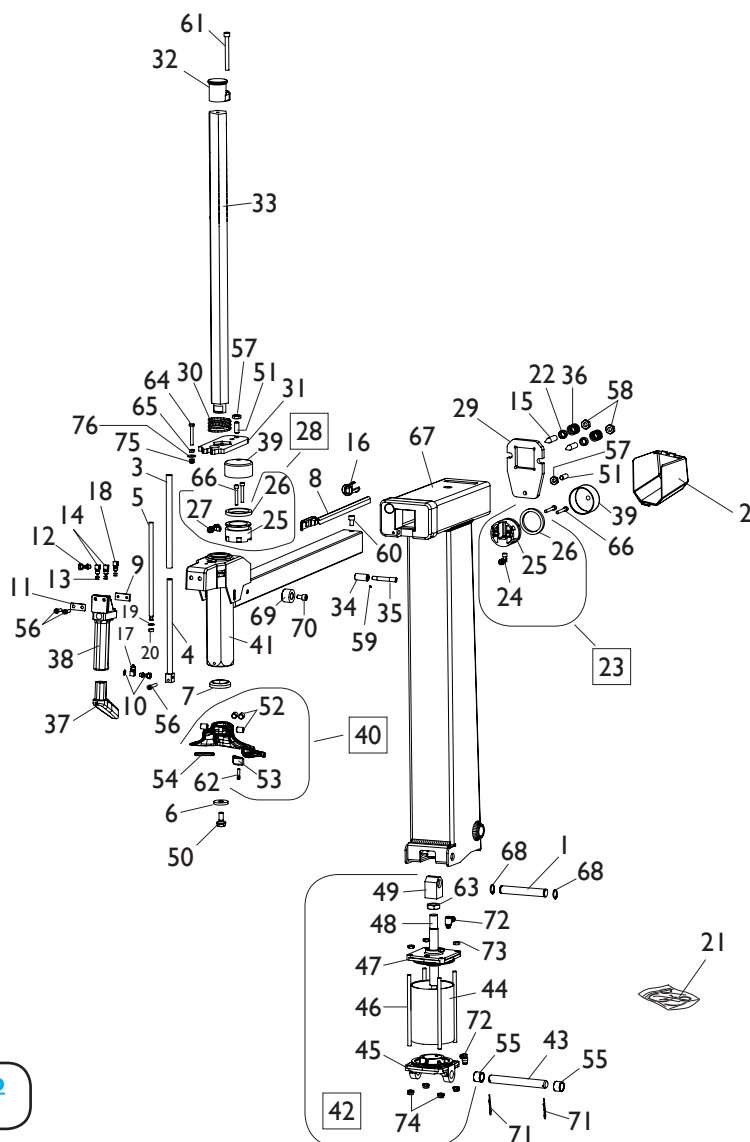


DOTAZIONE EQUIPMENT



| Rif. Ref. | Codice Code | Descrizione | Description |
|--------------|-----------------|---------------------------------|---------------------------------------|
| 1 | 4-109098 | PROTEZIONE PALO | ARM COVER |
| 2 | 436199 | APPOGGIO CERCHIO | RIM SUPPORT |
| 3 | 4-108275 | LEVA | LEVER |
| 4 | 4-401081 | PROTEZIONE LEVA | LEVER PORTECTION |
| 5 | 415248 | PENNELLO | BRUSH |
| 6 | 5-101528 | KIT 4 PROTEZIONI ESTERNE | EXTERNAL PROTECTION KIT (4 PZ) |
| 7 | 5-101526 | KIT 4 PROTEZIONI INTERNE | INTERNAL PROTECTION KIT (4 PZ) |
| 8 | 5-101563 | KIT 15 NSERTI TORRETTA | HEAD INSERTS KIT (15 PZ) |
| 9 | 5-104618 | KIT ADESIVI A2024TI | LABEL KIT A2024TI |

GRUPPO BRACCIO OPERANTE OPERATING ARM GROUP

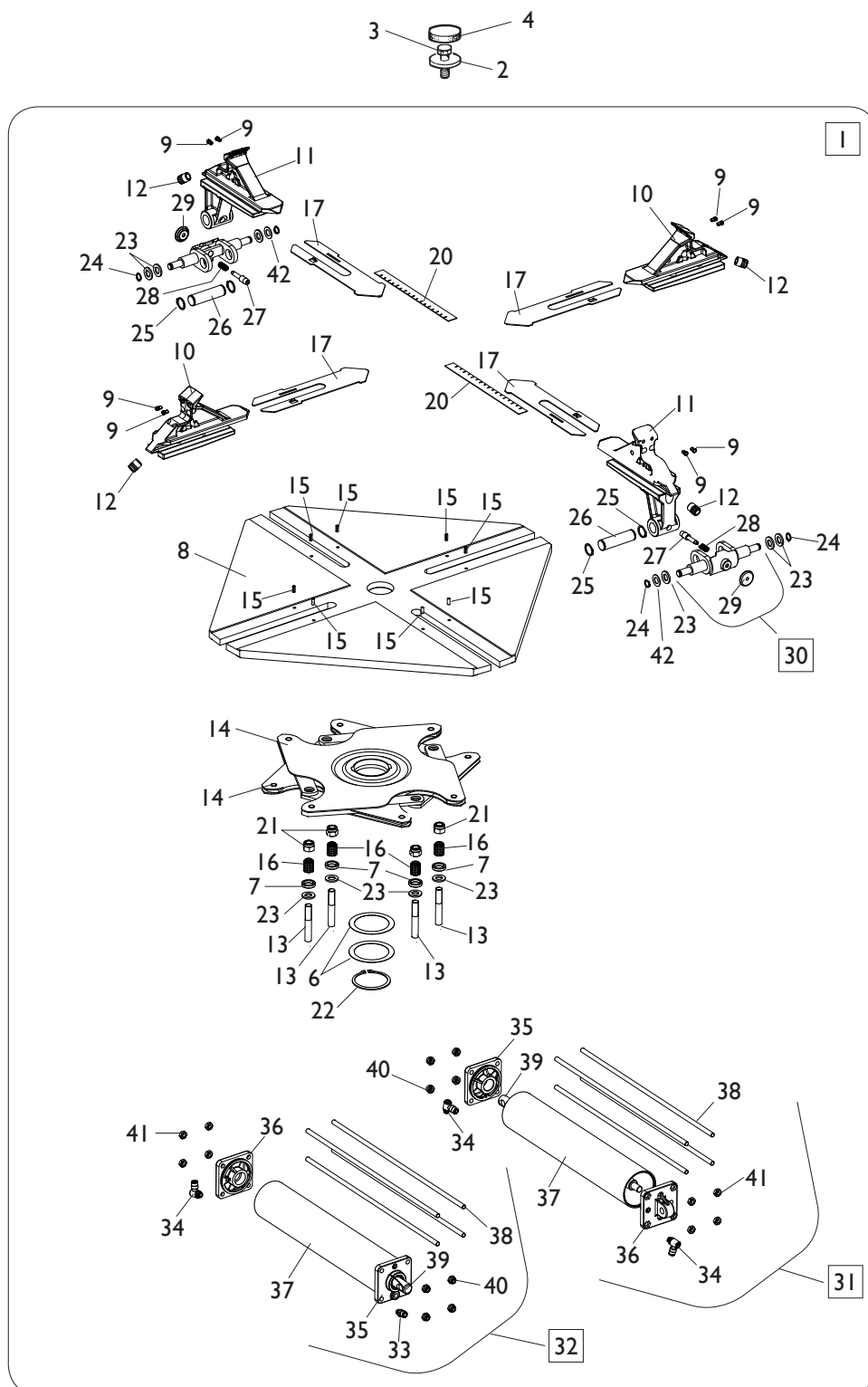


**TORNA AL COMPLESSIVO
RETURNS TO OVERALL**

| Ref. | Code | Descrizione | Description |
|------|----------|------------------------------|----------------------|
| 1 | 326667 | PERNO SUP. CIL. RIBALTO PALO | CYLINDER UPPER PIN |
| 2 | 426773 | PROTEZIONE CILINDRO D.60 | CYLINDER D.60 COVER |
| 3 | 338858 | TUBO SUPERIORE D.17 | UPPER PIPE D.17 |
| 4 | 238856 | SUPPORTO CON TUBO | SUPPORT |
| 5 | 338855 | STELO D.12X295 | STEM D.12X295 |
| 6 | 350194 | RONDELLA D.12X33X5 | WASHER D.12X33X5 |
| 7 | 428681 | ANELLO AMMORTIZZATORE | DAMPING RING |
| 8 | 426763 | GUIDA TUBI | PIPE GUIDE |
| 9 | 327284 | PIASTRINA POSTERIORE | REAR PLATE |
| 10 | 5-102718 | GRUPPO RACCORDO | FITTING ASSEMBLY |
| 11 | 327283 | PIASTRINA ANTERIORE | FRONT PLATE |
| 12 | 3-00070 | VITE FORATA M5 | SCREW M5 |
| 13 | 3-00452 | RONDELLA IN NYLON M5 | NYLON WASHER M5 |
| 14 | 3-00079 | RACCORDO M5 T.6/4 | FITTING M5 |
| 15 | 341836 | VITE SPECIALE M12X50 | SPECIAL SCREW M12X50 |
| 16 | 431061 | BOCCOLA DI GUIDA | GUIDE BUSHING |
| 17 | 4-133344 | STROZZATORE D. 0,65 | THROTTLER D. 0,65 |
| 18 | 4-133345 | STROZZATORE D. 1,25 | THROTTLER D. 1,25 |

| Ref. | Code | Descrizione | Description |
|------|----------|--|---------------------------------|
| 19 | 427299 | GUARNIZIONE D.14X5,8X4,5 | SEAL D.14X5,8X4,5 |
| 20 | 432090 | ANELLO DI GUIDA | GUIDE RING |
| 21 | 241484 | KIT GUARNIZIONI CIL. RIB. PALO | CYLINDER SEAL KIT |
| 22 | 339803 | BOCCOLA D.12X18X8 | BUSHING D.12X18X8 |
| 23 | 239805 | ASSIEME PISTONE BLOCC. POST. D.60X38 | PISTON REAR LOCKING D.60X38 |
| 24 | 3-00106 | RACCPN-L G1/8C T6/4 | L-FITTING G1/8C |
| 25 | 443077 | PISTONE D.60X38 | PISTON D.60X38 |
| 26 | 443078 | GUARNIZIONE D.60X47,6X6,35 | SEAL D.60X47,6X6,35 |
| 27 | 3-00119 | RACCPN-T G1/8C T6/4 | T-FITTING G1/8C |
| 28 | 239806 | ASSIEME PIST. BLOCC. VERTICALE D.60X38 | PISTON VERTICAL LOCKING D.60X38 |
| 29 | 336142 | PIASTRA BLOCCAGGIO ORIZZONTALE | ORIZONTAL LOCKING PLATE |
| 30 | 4-130853 | MOLLA COMPRESS. D.45X52,3X3,5 | COMPRESSOR SPRING D.45X52,3X3,5 |
| 31 | 340429 | PIASTRA BLOCCAGGIO VERTICALE | VERTICAL LOCKING PLATE |
| 32 | 440428 | POMOLO | KNOB |
| 33 | 340430 | BRACCIO VERTICALE | VERTICAL ARM |
| 34 | 339782 | RULLO | ROLLER |
| 35 | 339786 | PERNO ECCENTRICO | ECCENTRIC PIN |
| 36 | 439787 | MOLLA COMPRESSIONE D.22,6X2,3X22 | COMPRESSOR SPRING D.22,6X2,3X22 |
| 37 | 440692 | PROLUNGA MANIGLIA | EXTENSION HANDLE |
| 38 | 231744 | RUBINETTO CON MANIGLIA | HANDLE |
| 39 | 326537 | CILINDRO D.60 | CYLINDER D.60 |
| 40 | 258458 | TORRETTA COMPLETA | HEAD ASSEMBLY |
| 41 | 4-101588 | BRACCIO ORIZZONTALE 10-26" | ORIZONTAL ARM 10-26" |
| 42 | 4-100825 | CILINDRO RIBALTO PALO D.95 | CYLINDER ASSEMBLY D.95 |
| 43 | 4-101715 | PERNO FULCRO CILINDRO | CYLINDER FULCRUM PIN |
| 44 | 4-115967 | CAMICIA D.95X130 | LINER D.95X130 |
| 45 | 4-115956 | FLANGIA POSTERIORE D.95 | REAR FLANGE D.95 |
| 46 | 4-115997 | TIRANTE D.7X167 | TIE-ROD D.7X167 |
| 47 | 5-105114 | FLANGIA ANTERIORE D.95 | FRONT FLANGE D.95 |
| 48 | 4-115953 | STELO D.20X185 | STEM D.20X185 |
| 49 | 4-115954 | SUPPORTO ATTACCO CILINDRO | CYLINDER ATTACK |
| 50 | 350197 | VITE SPECIALE FISS. TORRETTA M10X20 | SPECIAL SCREW M10X20 |
| 51 | 2-01291 | VSTEI M10X25 | CSK SCREW SOCKET M10X25 |
| 52 | 2-71357 | VSTEI M12X16 | CSK SCREW SOCKET M12X16 |
| 53 | 4-104729 | INSERTO GIALLO | YELLOW INSERT |
| 54 | 4-104730 | INSERTO GIALLO | YELLOW INSERT |
| 55 | 4-101716 | TUBO DISTANZIALE D.22 | SPACER D.22 |
| 56 | 2-00310 | VTCEI M6X20 | HEXAGON SOCKET HEAD SCREW M6X20 |
| 57 | 2-00157 | DADO ES. M10 | HEXAGON NUT M10 |
| 58 | 2-00158 | DADO ES. M12 | HEXAGON NUT M12 |
| 59 | 2-00542 | VSTEI M6X6 | CSK SCREW SOCKET M6X6 |
| 60 | 2-01295 | VTCEI M8X14 | HEX. SOCKET HEAD SCREW M8X14 |
| 61 | 2-00909 | VTCEI M6X35 | HEXAGON SOCKET HEAD SCREW M6X20 |
| 62 | 342051 | PERNO TORRETTA | PIN |
| 63 | 2-00656 | DADO ES. M18X1,5 | HEXAGON NUT M18X1,5 |
| 64 | 2-00367 | VTE M6X45 | HEXAGON HEAD SCREW M6X45 |
| 65 | 2-00150 | DADO ES. M6 | HEXAGON NUT M6 |
| 66 | 2-00314 | VTCEI M6X40 | HEXAGON SOCKET HEAD SCREW M6X40 |
| 67 | 4-100799 | PALO 8-24" | ARM 8-24" |
| 68 | 2-00821 | SEEGER D.18 | SEEGER D.18 |
| 69 | 383372 | FERMO SCORREVOLE BR. OPERANTE | OPERATING ARM STOP |
| 70 | 2-01098 | VTCEI M8X22 | HEXAGON SOCKET HEAD SCREW M8X22 |
| 71 | 435055 | MOLLA A SPILLO D.2X10 | CLIP D.2X10 |
| 72 | 3-00217 | RACCPN-L-G1/8-CT6 | L-FITTING-G1/8-CT6 |
| 73 | 2-00156 | DADO ES. M8 | HEXAGON NUT M8 |
| 74 | 2-01137 | DADO ES. A. M8 | AUTOLOCKING HEX. NUT M8 |
| 75 | 2-01257 | DADO ES. A. M6 | AUTOLOCKING HEX. NUT M6 |
| 76 | 2-00679 | RONDELLA D.6,6X18X1,6 | WASHER D.6,6X18X1,6 |

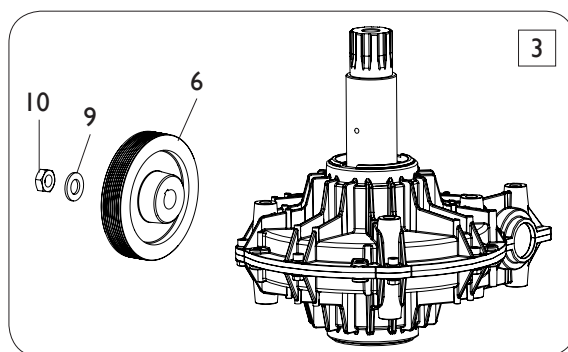
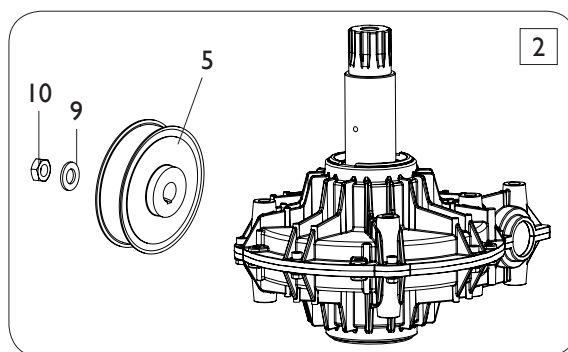
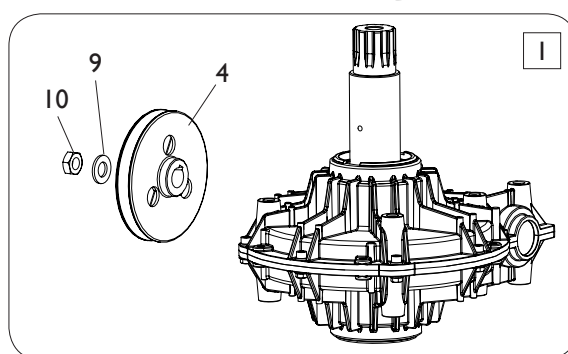
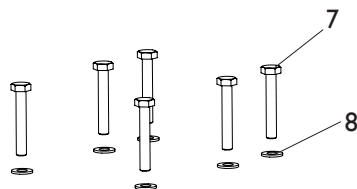
GR. AUTOCENTRANTE 10-24" TURNTABLE GROUP 10-24"



[TORNA AL COMPLESSIVO](#)
[RETURNS TO OVERALL](#)

| Rif. Ref. | Codice Code | Descrizione | Description |
|--------------|----------------|---|---|
| 1 | 5-100461 | GRUPPO AUTOCENTRANTE T.I. 10-24" | TURNTABLE T.I.ASSEMBLY 10-24" |
| 2 | 323363 | RONDELLA D.16,5X48X10 | WASHER D.16,5X48X10 |
| 3 | 2-01216 | VTE M16X1,5X35 | HEXAGON HEAD SCREW M16X1,5X35 |
| 4 | 426514 | TAPPO TONDO | ROUND CAP |
| 5 | 238548 | KIT GUARNIZIONI CILINDRI | CYLINDERS SEAL KIT |
| 6 | 455082 | RONDELLA D.65X85X0,4 | WASHER D.65X85X0,4 |
| 7 | 437964 | RONDELLA D.18,5X25X5 | WASHER D.18,5X25X5 |
| 8 | 4-101438 | PIATTO AUTOCENTRANTE 10-24" | TURNTABLE PLATE 10-24" |
| 9 | 339146 | PUNTA DI BLOCCAGGIO | LOCKING PEAK |
| 10 | 5-100485 | APP. SCORREVOLE TRAINATO T.I. | RIM SUPPORT T.I. |
| 11 | 5-100488 | APP. SCORREVOLE TRAINANTE T.I. | RIM SUPPORT T.I. |
| 12 | 441100 | RACCORDO T.10 | FITTING T.10 |
| 13 | 2-02199 | VTE 1/2F M12X1,25X75 | HEXAGON HEAD SCREW 1/2F M12X1,25X75 |
| 14 | 4-101651 | FLANGIA COMANDO BIELLE | FLANGE CONTROL RODS |
| 15 | 2-01059 | SPINA D.5X12 | PLUG D.5X12 |
| 16 | 353803 | BOCCOLA D.12X18X22,2 | BUSHING D.12X18X22,2 |
| 17 | 4-101441 | SLITTA COPRIASOLA 10-24" | PLATE 10-24" |
| 20 | 4-101456 | RIGHELLO MISURA POLLICI 10-24" | RULER MEASUREMENT INCHES 10-24" |
| 21 | 2-02200 | DADO ES.A. M12X1,25 | AUTOLOCKING HEXAGON NUT M12X1,25 |
| 22 | 2-01283 | ANELLO D.65 | SEEGER D.65 |
| 23 | 2-00214 | RONDELLA D.12 | WASHER D.12 |
| 24 | 2-00025 | SEEGER D.12 | SEEGER D.12 |
| 25 | 2-71587 | SEEGER D.20 | SEEGER D.20 |
| 26 | 4-101442 | PERNO | PIN |
| 27 | 4-101444 | INNESTO | CONNECTION |
| 28 | 4-101422 | MOLLA D.1,2X10X20 | SPRING D.1,2X10X20 |
| 29 | 4-109834 | POMOLO | KNOB |
| 30 | 5-103522 | KIT MANOVELLE + POMOLI (2PZ) | KNOB KIT (2 PIECES) |
| 31 | 5-100455 | CILINDRO DX D.70X304,5 10-24" | RIGHT CYLINDER D.70X304,5 10-24" |
| 32 | 5-100454 | CILINDRO SX D.70X304,5 10-24" | LEFT CYLINDER D.70X304,5 10-24" |
| 33 | 3-02045 | RACCPN-D- G1/8 T6 + O-RING | D-FITTING G1/8 WITH O-RING |
| 34 | 3-02044 | RACCPN-LO- G1/8 T6 + O-RING | LO-FITTING G1/8 WITH O-RING |
| 35 | 5-105111 | FLANGIA ANTERIORE D.70 | FRONT FLANGE D.70 |
| 36 | 4-115948 | FLANGIA POSTERIORE D.70 | REAR FLANGE D.70 |
| 37 | 4-115951 | CAMICIA D.70X338,5 10-24" | LINER D.70X338,5 10-24" |
| 38 | 4-115949 | TIRANTE D.7X368 M8 10-24" | TIE ROD D.7X368 M8 10-24" |
| 39 | 4-115959 | STELO D.20X437 | STEM D.20X437 |
| 40 | 2-01137 | DADO ES.A. M8 | AUTOLOCKING HEXAGON NUT M8 |
| 41 | 2-00156 | DADO ES. M8 | HEXAGON NUT M8 |
| 42 | 428636 | ROND D.12.3 x 22.8 x 1 | WASHER D.12.3 x 22.8 x 1 |

GRUPPO RIDUTTORE GEARBOX GROUP

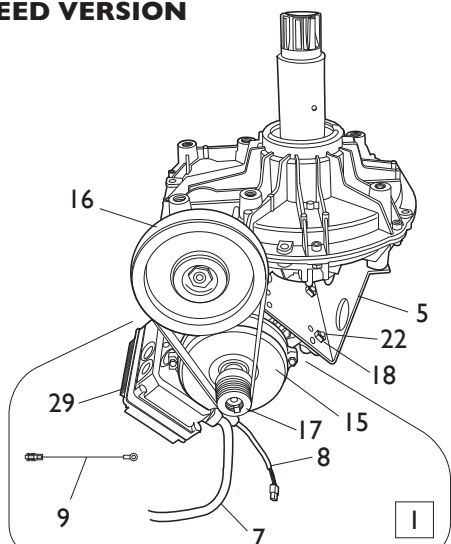


[TORNA AL COMPLESSIVO](#)
[RETURNS TO OVERALL](#)

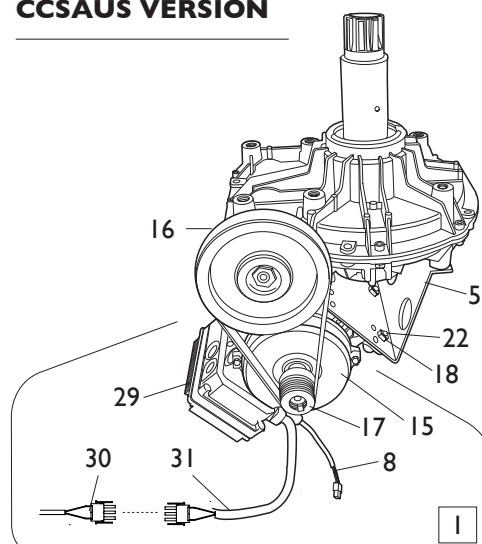
| Rif. Ref. | Codice Code | Descrizione | Description |
|--------------|----------------|-----------------------------|---------------------------|
| 1 | 5-102647 | RIDUTTORE 1 VELOCITA | 1 SPEED GEARBOX |
| 2 | 239555 | RIDUTTORE PNEUMATICO | PNEUMATIC GEARBOX |
| 3 | 5-102648 | RIDUTTORE 2 VELOCITA | 2 SPEED GEARBOX |
| 4 | 314344 | PULEGGIA 1 VELOCITA | 1 SPEED PULLEY |
| 5 | 319073 | PULEGGIA PNEUMATICA | PNEUMATIC PULLEY |
| 6 | 339870 | PULEGGIA 2 VELOCITA | 2 SPEED PULLEY |
| 7 | 2-01046 | VTE M10X55 | HEXAGON HEAD SCREW M10X55 |
| 8 | 2-00213 | RONDELLA D.10 | WASHER D.10 |
| 9 | 2-00215 | RONDELLA D.14 | WASHER D.14 |
| 10 | 2-00941 | DADO ES. M14 | HEXAGON NUT M14 |

IMPIANTO ELETTRICO ELECTRICAL SYSTEM

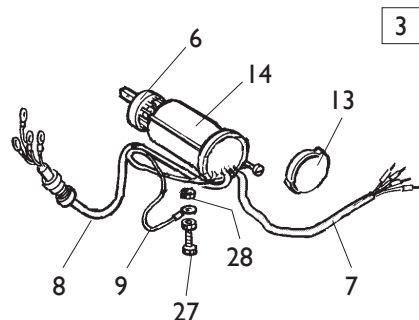
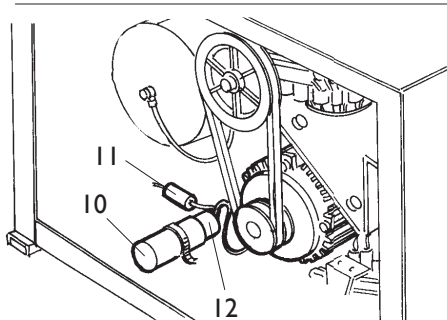
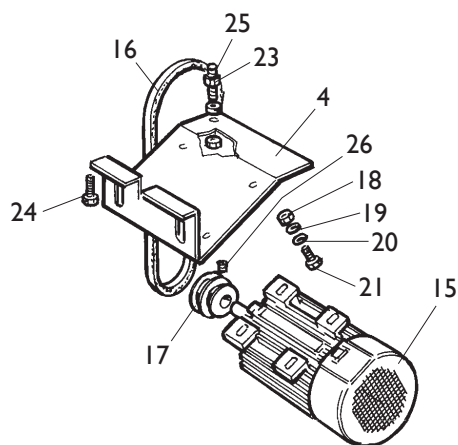
**VERSIONE DV
2 SPEED VERSION**



**VERSIONE CCSAUS
CCSAUS VERSION**



**VERSIONE Iph
Iph VERSION**



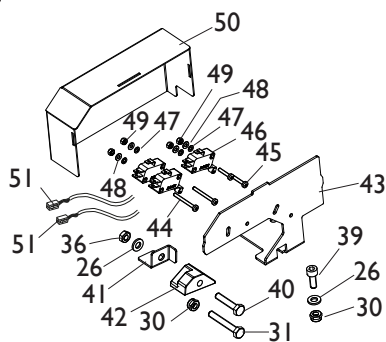
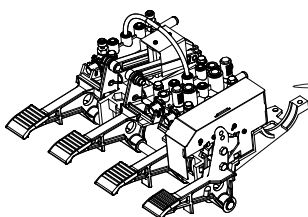
[TORNA AL COMPLESSIVO](#)
[RETURNS TO OVERALL](#)

| Rif. Ref. | Codice Code | Descrizione | Description |
|--------------|----------------|---------------------------------------|--|
| 1 | 5-104986 | MOTOINVERTER DV 230V/1/50-60HZ | MOTOINVERTER 2 SPEED 230V/1/50-60HZ |
| 1 | 5-104995 | MOTOINVERTER DV 115V/1/50-60HZ | MOTOINVERTER 2 SPEED 115V/1/50-60HZ |
| 1 | 5-107592 | MOTOINVERTER 115V CCSAUS | MOTOINVERTER 115V CCSAUS |
| 3 | 5-103989 | IMPIANTO ELETTRICO 115V 1ph | ELECTRICAL SYSTEM 115V 1ph |
| 4 | 334768 | CULLA MOTORE | MOTOR SUPPORT |
| 5 | 4-109965 | CULLA MOTOINVERTER DV | MOTOINVERTER SUPPORT |
| 6 | 5-102742 | INVERTITORE 1ph | INVERTER 1ph |
| 7 | 447801 | CAVO RETE 115V 1ph | SUPPLY CABLE 115V 1ph |
| 7 | 4-111586 | CAVO RETE MOTOINVERTER | SUPPLY CABLE MOTOINVERTER |
| 8 | 249590 | CAVO MOTORE 115V 1ph | MOTOR CABLE 115V 1ph |
| 8 | 4-109895 | CAVO COMANDI MOTOINVERTER | COMMAND CABLE MOTOINVERTER |
| *8 | 4-121510 | CAVO COMANDI CCSAUS | COMMAND CABLE CCSAUS |
| 9 | 249601 | CAVO DI MASSA L.350mm 115V 1ph | U-BOLT L.350mm 115V 1ph |
| 9 | 4-101659 | CAVO DI MASSA L.400mm MOTOINV. | U-BOLT L.400mm MOTOINVERTER |
| 10 | 430750 | CAPPELLOTTO D.45 115V 1ph | CAP NUT 115V 1ph |
| 11 | 430770 | RESISTENZA 330K OHM | RESISTANCE 330K OHM |
| 12 | 4-112706 | CONDENSATORE 50mf 115V 1ph | CAPACITOR 50mf 115V 1ph |
| 13 | 430991 | COPERCHIO PROTEZIONE | LID |
| 14 | 432065 | PROTEZIONE INVERTITORE | INVERTER COVER |
| 15 | 4-112454 | MOTORE 115V 1ph | MOTOR 115V 1ph |
| 15 | 4-113412 | MOTOINVERTER (NO SK) 230/115V | MOTOINVERTER (NO P.C. BOARD) 230/115V |
| 15 | 4-121508 | MOTOINVERTER (NO SK) CCSAUS | MOTOINVERTER (NO P.C. BOARD) CCSAUS |
| 16 | 3-00573 | CINGHIA MOTORE 2V | MOTOR BELT 2 SPEED |
| 16 | 3-10068 | CINGHIA MOTORE 1ph 50hz | MOTOR BELT 1ph 50hz |
| 16 | 3-00555 | CINGHIA MOTORE 1ph 60hz | MOTOR BELT 1ph 60hz |
| 17 | 331067 | PULEGGIA MOTORE 1ph | MOTOR PULLEY 1ph |
| 17 | 4-102397 | PULEGGIA MOTOINVERTER | PULLEY FOR MOTOINVERTER |
| 18 | 421349 | DADO ES.A. M8 | AUTOLOCKING HEXAGON NUT M8 |
| 19 | 339208 | RONDELLA D.8,5X22X4 | WASHER D.8,5X22X4 |
| 20 | 2-00212 | RONDELLA D.8 | WASHER D.8 |
| 21 | 2-00374 | VTE M8X25 | HEXAGON HEAD SCREW M8X25 |
| 22 | 2-00375 | VTE M8X30 | HEXAGON HEAD SCREW M8X30 |
| 23 | 2-00152 | DADO ES. M10 | HEXAGON NUT M10 |
| 24 | 2-00328 | VTCEI M10X20 | HEXAGON SOCKET HEAD SCREW M10X20 |
| 25 | 455920 | VSTEI SPECIALE M10X60 | SPECIAL SCREW M10X60 |
| 26 | 2-01091 | VSTEI M6X5 | CSK SCREW SOCKET M6X5 |
| 27 | 2-00605 | VITE M4X10 | SCREW M4X10 |
| 28 | 2-00143 | DADO ES. M4 | HEXAGON NUT M4 |
| 29 | 4-115396 | SK MOTOINVERTER 230V | MOTOINVERTER P.C. BOARD 230V |
| 29 | 4-113414 | SK MOTOINVERTER 115V | MOTOINVERTER P.C. BOARD 115V |
| 29 | 4-121512 | SK MOTOINVERTER CCSAUS | MOTOINVERTER P.C. BOARD CCSAUS |
| 30 | 4-121502 | CAVO ALIM. CCSAUS L.3950mm | SUPPLY CABLE CCSAUS L.3950mm |
| 31 | 4-121511 | CAVO ALIM. CCSAUS L.3700mm | SUPPLY CABLE CCSAUS L.3700mm |

GRUPPO PEDALIERA PEDAL GROUP

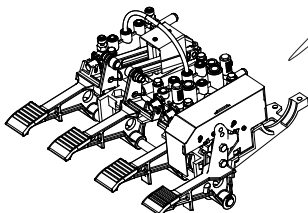
3

VERSIONE CCSAUS
CCSAUS VERSION



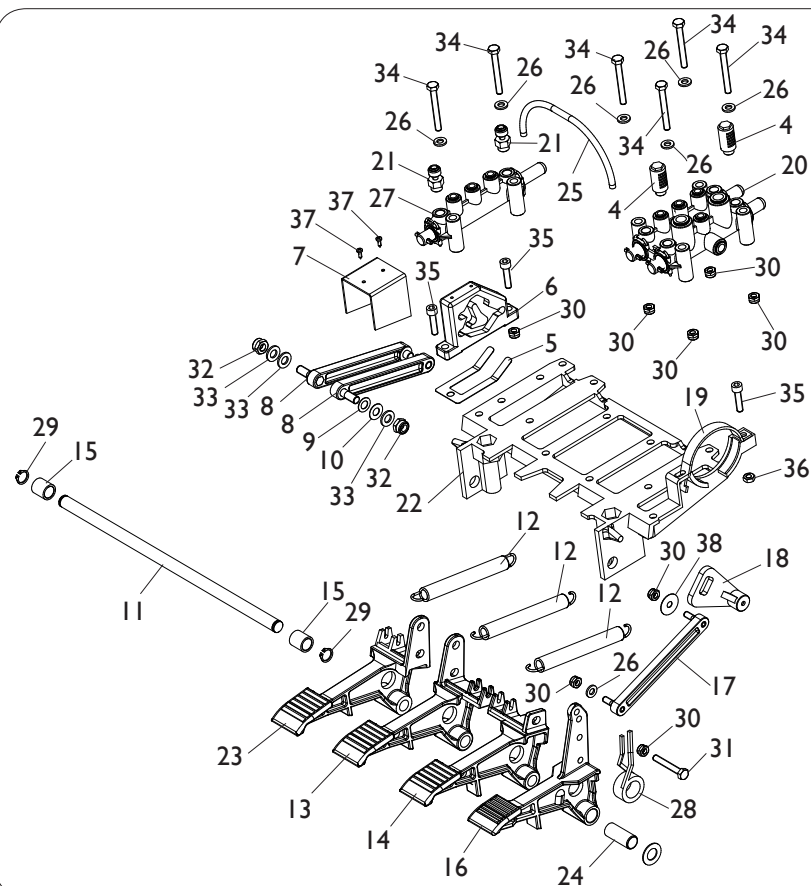
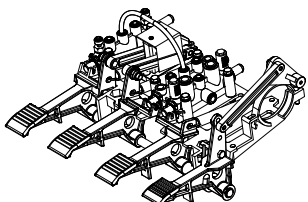
1

VERSIONE DV
2 SPEED VERSION



2

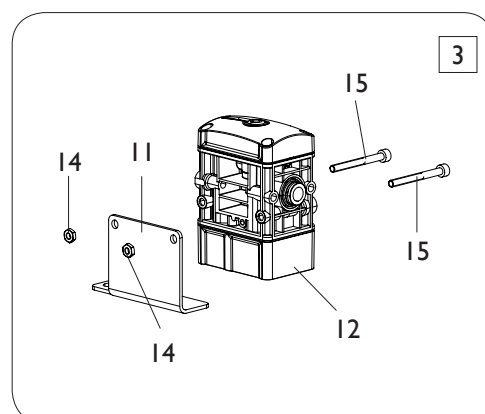
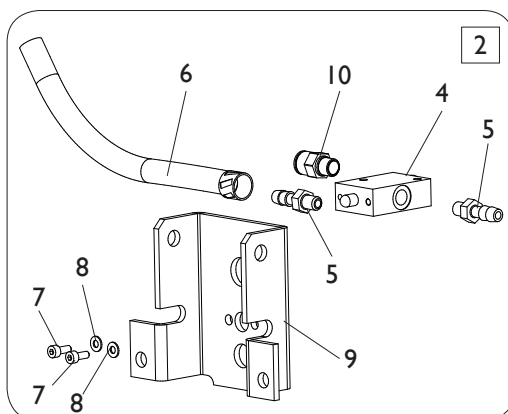
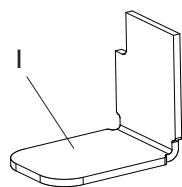
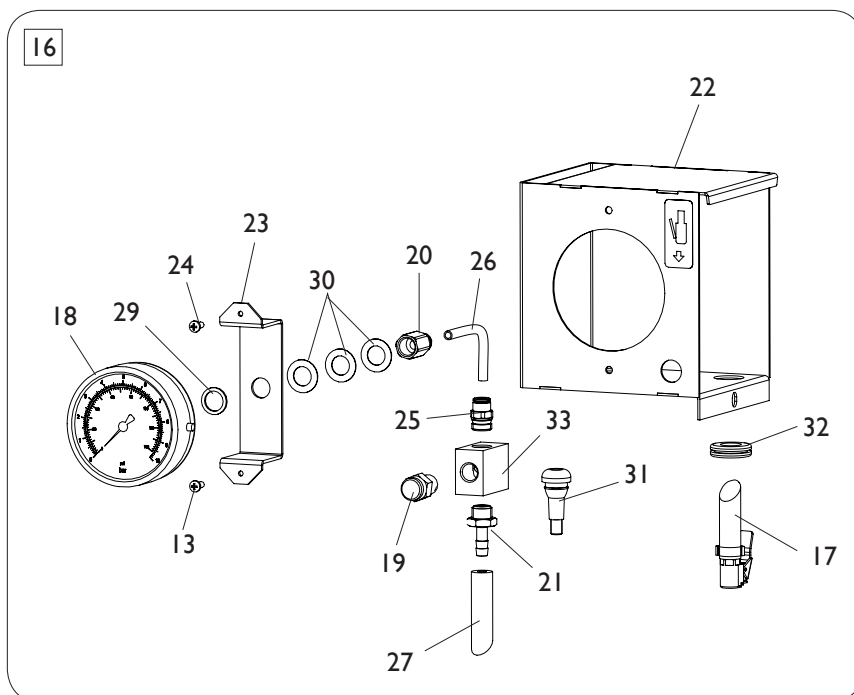
VERSIONE IV
I SPEED VERSION



[TORNA AL COMPLESSIVO](#)
[RETURNS TO OVERALL](#)

| Rif. Ref. | Codice Code | Descrizione | Description |
|--------------|----------------|-------------------------------|---------------------------------|
| 1 | 5-106268 | PEDALIERA 2 VELOCITA | 2 SPEED PEDAL ASSEMBLY |
| 2 | 5-105188 | PEDALIERA 1 VELOCITA | 1 SPEED PEDAL ASSEMBLY |
| 3 | 5-107616 | PEDALIERA CCSAUS | PEDAL ASSEMBLY CCSAUS |
| 4 | 3-00183 | SILENZIATORE IN PLASTICA 1/8 | PLASTIC SILENCER 1/8 |
| 5 | 325019 | BALESTRA A FORCELLA | LEAF SPRING |
| 6 | 425020 | CAMMA DOPPIA | DOUBLE CAM |
| 7 | 325018 | CAVALLOTTO GUIDA BIELLE | U-BOLT |
| 8 | 425014 | BIELLA CAMMA | CAM ROD |
| 9 | 2-02247 | RONDELLA D.8,4X15 | WASHER D.8,4X15 |
| 10 | 309358 | RONDELLA D.8X16,5X0,5 | WASHER D.8X16,5X0,5 |
| 11 | 325005 | PERNO PEDALIERA | PEDAL PIN |
| 12 | 410628 | MOLLA D.14X2X105 | SPRING D.14X2X105 |
| 13 | 325031 | PEDALE AUTOCENTRANTE | TURNTABLE PEDAL |
| 14 | 325032 | PEDALE STALLONATORE | BEAD BRAKE PEDAL |
| 15 | 325050 | DISTANZIALE | SPACER |
| 16 | 5-102714 | PEDALE INVERTITORE | INVERTER PEDAL |
| 17 | 425010 | BIELLA | ROD |
| 18 | 425027 | LEVA INVERTITORE | INVERTER LEVER |
| 19 | 332495 | CAVALLOTTO BLOCC. INVERTITORE | INVERTER LOCKING |
| 20 | 5-102739 | RUBINETTO DOPPIO | DOUBLE VALVE |
| 21 | 433675 | REGOLATORE 1/8 | REGULATOR 1/8 |
| 22 | 524273 | SUPPORTO COMANDI | COMMAND SUPPORT |
| 23 | 325030 | PEDALE ALZAPALO | TILTING PEDAL |
| 24 | 452011 | BOCCOLA D.12X14X33,5 | BUSH D.12X14X33,5 |
| 25 | 315268 | TUBO D.6X1 L.260mm | RYLSAN HOSE D.6X1 L.260mm |
| 26 | 2-00211 | RONDELLA D.6 | WASHER D.6 |
| 27 | 257137 | RUBINETTO SINGOLO | SINGLE VALVE |
| 28 | 4-109664 | MOLLA COMANDO INTERRUTTORE | INVERTER SPRING |
| 29 | 2-00025 | SEEGER D.12 | SEEGER D.12 |
| 30 | 2-01979 | DADO ES.A. M6 | AUTOLOCKING HEXAGON NUT M6 |
| 31 | 2-00366 | VTE M6X40 | HEXAGON HEAD SCREW M6X40 |
| 32 | 2-01137 | DADO ES.A. M8 | AUTOLOCKING HEXAGON NUT M8 |
| 33 | 2-00212 | RONDELLA D.8 | WASHER D.8 |
| 34 | 2-00411 | VTE 1/2F M6X50 | HEXAGON HEAD SCREW 1/2F M6X50 |
| 35 | 2-00312 | VTCEI M6X25 | HEXAGON SOCKET HEAD SCREW M6X25 |
| 36 | 2-00155 | DADO ES. M6 | HEXAGON NUT M6 |
| 37 | 2-01272 | VATBIC D.2,9X9,5 | SCREW D.2,9X9,5 |
| 38 | 315286 | RONDELLA D.6X22X0,5 | WASHER D.6X22X0,5 |
| 39 | 2-00309 | VTCEI M6X16 | HEXAGON SOCKET HEAD SCREW M6X16 |
| 40 | 2-00364 | VTE M6X30 | HEXAGON HEAD SCREW M6X30 |
| 41 | 4-102403 | STAFFA ANTIROTAZIONE | ANTIROTATING PLATE |
| 42 | 461535 | BLOCCHETTO MICRO | MICRO BLOCK |
| 43 | 4-102401 | SUPPORTO MICRO | MICRO SUPPORT |
| 44 | 2-00578 | VTCIC M3X30 | SCREW M3X30 |
| 45 | 2-00576 | VTCIC M3X20 | SCREW M3X20 |
| 46 | 440874 | MICRO 16A 250V | MICRO 16A 250V |
| 47 | 2-71547 | ROSETTA D.3 | WASHER D.3 |
| 48 | 2-00208 | RONDELLA D.3 | WASHER D.3 |
| 49 | 2-00124 | DADO ES. M3 | HEXAGON NUT M3 |
| 50 | 4-102402 | COPERCHIO | COVER |
| 51 | 4-101693 | CAVO 4X0,5 L.400mm | CABLE 4X0,5 L.400mm |
| 51 | 4-121504 | CAVO CCSAUS L.400mm | CABLE CCSAUS L.400mm |

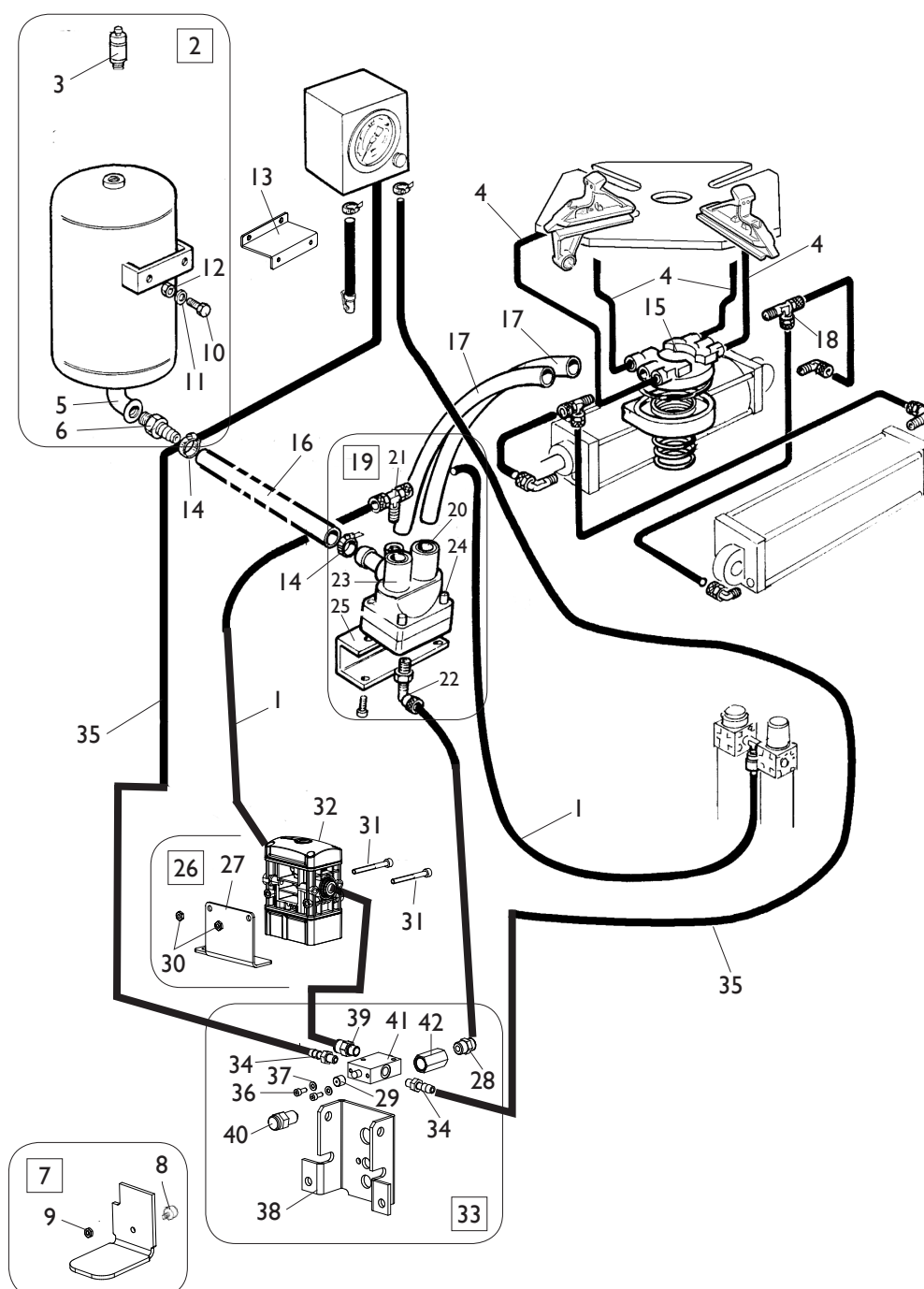
GRUPPO GONFIAGGIO INFLATION GROUP



[TORNA AL COMPLESSIVO](#)
[RETURNS TO OVERALL](#)

| Rif. Ref. | Codice Code | Descrizione | Description |
|--------------|----------------|-----------------------------------|---------------------------------------|
| 1 | 234771 | PEDALE DI GONFIAGGIO | INFLATION PEDAL |
| 2 | 5-105673 | GRUPPO DI GONFIAGGIO CPL. | INFLATION ASSEMBLY |
| 3 | 5-106703 | LIMITATORE GONFIAGGIO CPL. | VALVE ASSEMBLY |
| 4 | 3-00365 | VALVOLA 3/2 1/8 | VALVE 3/2 1/8 |
| 5 | 3-00004 | RACCPN ATTACCO RESCA 7 G1/8 | RESCA FITTING G1/8 |
| 6 | 352614 | TUBO IN GOMMA L.1900mm | RUBBER HOSE L.1900mm |
| 7 | 2-00289 | VTCEI M4X10 | HEXAGON SOCKET HEAD SCREW M4X10 |
| 8 | 2-00209 | RONDELLA D.4 | WASHER D.4 |
| 9 | 352968 | SUPPORTO VALVOLA | VALVE SUPPORT |
| 10 | 3-00464 | RACCPN-D G1/8G T8 | D-FITTING G1/8G T8 |
| 11 | 4-119680 | SUPPORTO VALVOLA | VALVE SUPPORT |
| 12 | 3-03313 | LIMITATORE DI GONFIAGGIO | VALVE |
| 13 | 352586 | BLOCCHETTO | BLOCK |
| 14 | 2-02804 | DADO ES. M4 | HEXAGON NUT M4 |
| 15 | 2-00851 | VTCEI M4X40 | HEXAGON SOCKET HEAD SCREW M4X40 |
| 16 | 252599 | SCATOLA GONFIAGGIO BAR/PSI | BAR/PSI INFLATION BOX ASSEMBLY |
| 16 | 259565 | SCATOLA GONFIAGGIO KPA | KPA INFLATION BOX ASSEMBLY |
| 17 | 262971 | TUBO GONFIAGGIO | INFLATION HOSE |
| 18 | 3-00490 | MANOMETRO BAR/PSI | BAR/PSI PRESSURE GAUGE |
| 18 | 3-00493 | MANOMETRO KPA | KPA PRESSURE GAUGE |
| 19 | 235463 | VALVOLA SGONFIAGGIO | DEFLATION VALVE |
| 20 | 3-00261 | RACCPN-D G1/4F T6 | D-FITTING G1/4F T6 |
| 21 | 3-00007 | RACCPN ATTACCO RESCA 7 G1/4 | RESCA FITTING G1/4 |
| 22 | 234171 | SCATOLA MANOMETRO | GAUGE BOX |
| 23 | 353537 | SUPPORTO MANOMETRO | PRESSURE GAUGE SUPPORT |
| 24 | 2-71485 | VTABIC D.3,9X13 | SCREW D.3,9X13 |
| 25 | 3-00460 | RACCPN-D G1/4 T6 | D-FITTING G1/4 T6 |
| 26 | 315268 | TUBO RYLSAN 6X1 L.260mm | RYLSAN HOSE 6X1 L.260mm |
| 27 | 354410 | TUBO 18 ATM. D.6-14 L.3150mm | RUBBR HOSE D.6-14 L.3150mm |
| 28 | 340775 | SUPPORTO SCATOLA GONFIAGGIO | INFLATION BOX SUPPORT |
| 29 | 3-00449 | RONDELLA 1/4 | WASHER 1/4 |
| 30 | 301109 | RONDELLA D.13X22X0,6 | WASHER D.13X22X0,6 |
| 31 | 3-01568 | VALVOLA TUBLESS | TUBLESS VALVE |
| 32 | 454412 | PASSACAVO D.14X22X1,5 | RUBBER D.14X22X1,5 |
| 33 | 352586 | BLOCCHETTO | BLOCK |

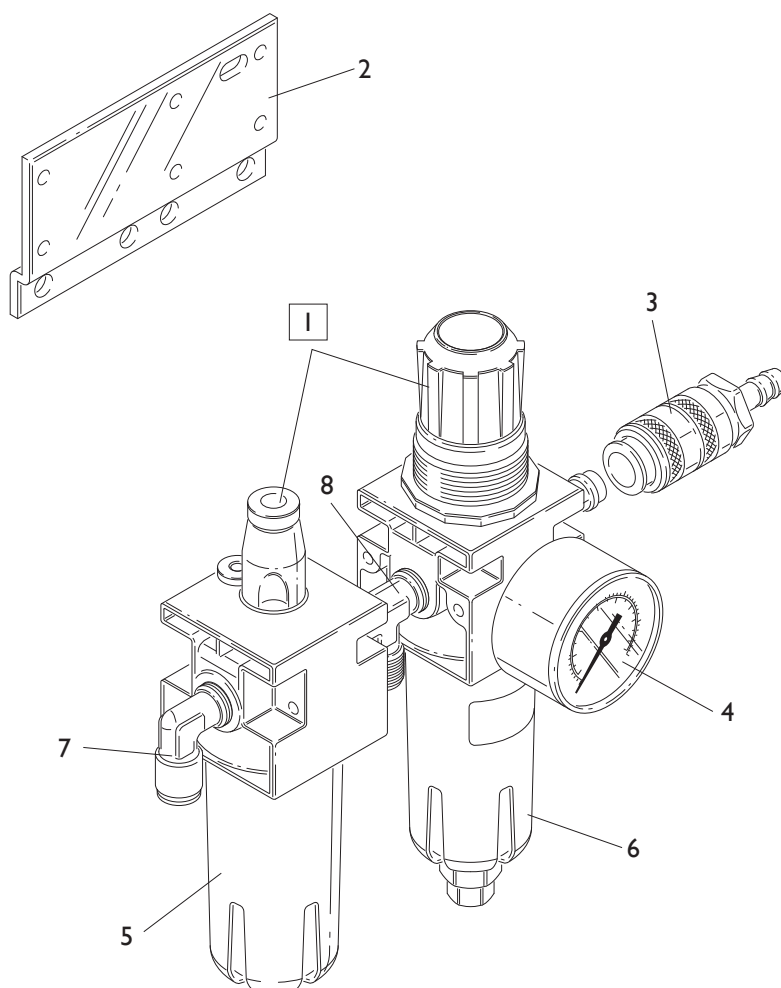
GRUPPO GONFIAGGIO T.I. T.I. INFLATION GROUP



[TORNA AL COMPLESSIVO](#)
[RETURNS TO OVERALL](#)

| Rif. Ref. | Codice Code | Descrizione | Description |
|--------------|----------------|------------------------------------|--------------------------------------|
| 1 | 1-01683 | TUBO RYLSAN D8X1 | RYLSAN HOSE D.8X1 |
| 2 | 240968 | SERBATOIO CON VALVOLA CE | CE TANK ASSEMBLY |
| 2 | 5-100580 | SERBATOIO CON VALVOLA ASME | ASME TANK ASSEMBLY |
| 3 | 3-00356 | VALVOLA DI MAX 11BAR CE | CE VALVE 11BAR |
| 3 | 3-00278 | VALVOLA DI MAX 11BAR ASME | ASME VALVE 11BAR |
| 4 | 1-04223 | TUBO POLIUR.ARIA D.10X1,25 | HOSE D.10X1,25 |
| 5 | 438995 | RACCPN-L M/F | L-FITTING |
| 6 | 337704 | RACCPN-RESCA GI-TG26 L67 | RESCA FITTING GI-TG26 L67 |
| 7 | 252625 | PEDALE GONFIAGGIO | INFLATION PEDAL |
| 8 | 452624 | ANTIVIBRANTE M/F 20X11 M6X9 | VIBRATION DAMPING 20X11 M6X9 |
| 9 | 2-00150 | DADO ES. M6 | HEXAGON NUT M6 |
| 10 | 2-00373 | VTE M8X20 | HEXAGON HEAD SCREW M8X20 |
| 11 | 2-00212 | RONDELLA D.8 | WASHER D.8 |
| 12 | 2-00112 | DADO ES. M8 | HEXAGON NUT M8 |
| 13 | 4-100833 | STAFFA SERBATOIO | TANK BRACKET |
| 14 | 403751 | FASCETTA D.8-16 | FASTEN D.8-16 |
| 15 | 241841 | RACCORDO GIREVOLE T.I. | T.I. ROTATING JOINT |
| 16 | 4-102573 | TUBO IN GOMMA 25X37 18ATM. L.340mm | RUBBER HOSE 25X37 L.340mm |
| 17 | 342289 | TUBO RYLSAN TRASP. 14X1 L.650mm | RYLSAN HOSE 14X1 L.650mm |
| 18 | 3-00117 | RACCPN-TL GI/8C T6/4 | TL-FITTING GI/8C T6/4 |
| 19 | 242290 | VALVOLA DI GONFIAGGIO T.I. | T.I. INFLATION VALVE |
| 20 | 3-02945 | CARTUCCIA | CARTRIGE |
| 21 | 4-402799 | RACCPN-TO GI/4C T8 | T-FITTING GI/4C T8 |
| 22 | 4-402798 | RACCPN-LO GI/4C T8 | L-FITTING GI/4C T8 |
| 23 | 243020 | VALVOLA | VALVE |
| 24 | 2-94006 | VTCEI 1/2F M6X40 | HEXAGON SOCKET HEAD SCREW 1/2F M6X40 |
| 25 | 342286 | STAFFA PORTA VALVOLA | VALVE BRACKET |
| 26 | 5-106703 | LIMITATORE GONFIAGGIO CPL. | VALVE ASSEMBLY |
| 27 | 4-119680 | SUPPORTO VALVOLA | VALVE SUPPORT |
| 28 | 3-00460 | RACCPN-D GI/4 T6 | D-FITTING GI/4 T6 |
| 29 | 352619 | CAPPELOTTO DISTANZIALE | SPACER |
| 30 | 2-02804 | DADO ES. M4 | HEXAGON NUT M4 |
| 31 | 2-00851 | VTCEI M4X40 | HEXAGON SOCKET HEAD SCREW M4X40 |
| 32 | 3-03313 | LIMITATORE DI GONFIAGGIO | VALVE |
| 33 | 5-105676 | GRUPPO DI GONFIAGGIO CPL. | INFLATION ASSEMBLY |
| 34 | 3-00004 | RACCPN ATTACCO RESCA 7 GI/8 | RESCA FITTING GI/8 |
| 35 | 352614 | TUBO IN GOMMA L.3500mm | RUBBER HOSE L.3500mm |
| 36 | 2-00289 | VTCEI M4X10 | HEXAGON SOCKET HEAD SCREW M4X10 |
| 37 | 2-00209 | RONDELLA D.4 | WASHER D.4 |
| 38 | 352968 | SUPPORTO VALVOLA | VALVE SUPPORT |
| 39 | 3-00464 | RACCPN-D GI/8G T8 | D-FITTING GI/8G T8 |
| 40 | 235463 | VALVOLA SGONFIAGGIO | DEFLATION VALVE |
| 41 | 3-00365 | VALVOLA 3/2 1/8 | VALVE 3/2 1/8 |
| 42 | 338576 | DISTANZIALE 17X32 | SPACER 17X32 |

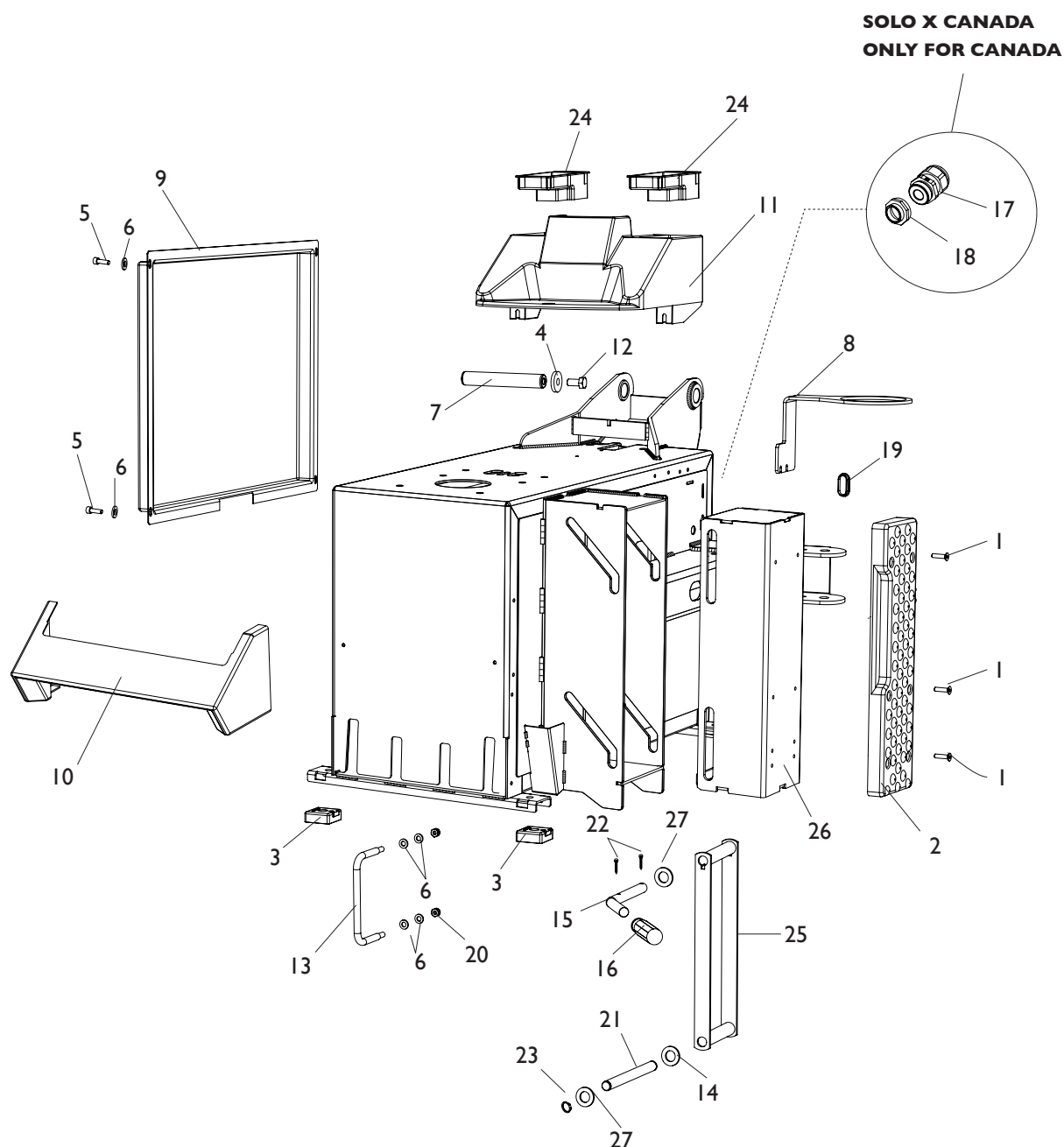
GRUPPO FILTRO FILTER GROUP



[TORNA AL COMPLESSIVO](#)
[RETURNS TO OVERALL](#)

| Rif. Ref. | Codice Code | Descrizione | Description |
|--------------|----------------|--------------------------------------|---|
| 1 | 456522 | FILTRO CPL (MANOM. ESCLUSO) | FILTER ASSEMBLY (GAUGE NOT INCLUDED) |
| 2 | 335695 | STAFFA FILTRO | FILTER BRACKET |
| 3 | 3-00257 | RACCORDO RAPIDO | FITTING |
| 4 | 3-00488 | MANOMETRO D.40 BAR/PSI | BAR/PSI D.40 PRESSURE GAUGE |
| 4 | 3-00494 | MANOMETRO D.40 KPA | KPA D.40 PRESSURE GAUGE |
| 5 | 457511 | BICCHIERE LUBRIFICATORE | LUBRIFICATOR BOWL |
| 6 | 457512 | BICCHIERE FILTRO | FILTER BOWL |
| 7 | 3-00221 | RACCPN-L G1/4C T8 | L-FITTING G1/4C T8 |
| 8 | 3-00001 | RACCPN-T G1/4 M/M | T-FITTING G1/4 |

GRUPPO CASSONE OLD OLD FRAME GROUP

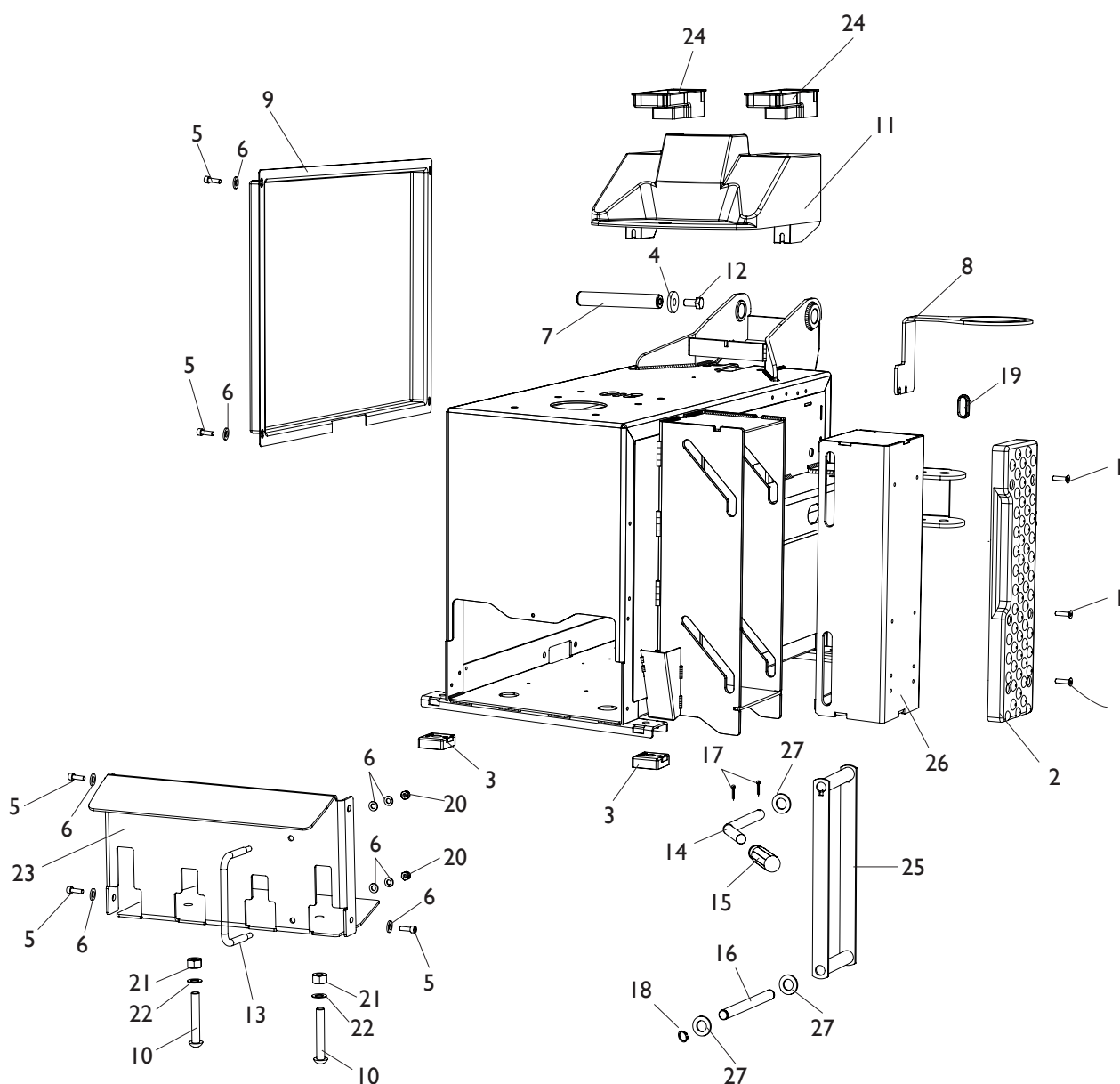


**[TORNA AL COMPLESSIVO
RETURNS TO OVERALL](#)**

| Rif. Ref. | Codice Code | Descrizione | Description |
|--------------|----------------|--------------------------------|---------------------------------|
| 1 | 2-01885 | VTSP EI M6X25 | CSK SCREW SOCKET M6X25 |
| 2 | 436199 | APPOGGIO CERCHIO LUNGO | RIM SUPPORT |
| 3 | 422019 | PIEDE | FOOT |
| 4 | 318183 | RONDELLA D.12,5X37,5X6 | WASHER D.12,5X37,5X6 |
| 5 | 2-00310 | VTCEI M6X20 | HEXAGON SOCKET HEAD SCREW M6X20 |
| 6 | 2-00211 | RONDELLA D.6 | WASHER D.6 |
| 7 | 331055 | PERNO PALO | ARM PIN |
| 8 | 358135 | PORTAGRASSO | BRACKET |
| 9 | 5-101008 | COFANO CON ADESIVI | COVER WITH LABEL |
| 10 | 426768 | PROTEZIONE PEDALI | PEDAL COVER |
| 11 | 4-109098 | PROTEZIONE PALO | ARM COVER |
| 12 | 2-01225 | VTE M12X25 | HEXAGON HEAD SCREW M12X25 |
| 13 | 346545 | CAVALLOTTO SEPARATORE | PROTECTION |
| 14 | 2-01045 | RONDELLA D.16 | WASHER D.16 |
| 15 | 339456 | PERNO MANIGLIA | HANDLE PIN |
| 16 | 425219 | MANOPOLA | HANDLE |
| 17 | 3-03548 | PRESSAVAVO PG21 (OLD) | CABLE GLAND PG21 (OLD) |
| 17 | 426542 | PRESSACAVO PG16 (NEW) | CABLE GLAND PG16 (NEW) |
| 18 | 3-03547 | RACC-DRITTO-M-F-PG16-21 (OLD) | FITTING-M-F-PG16-21 (OLD) |
| 19 | 437830 | TAPPO OVALE D.45X20 H10 | CAP D.45X20 H10 |
| 20 | 2-01979 | DADO ES.A. M6 | AULOCKING HEXAGON NUT M6 |
| 21 | 339046 | PERNO CORTO | SHORT PIN |
| 22 | 2-00047 | COPIGLIA D.3X30 | PLUG D.3X30 |
| 23 | 2-01122 | SEEGER D.15 | SEEGER D.15 |
| 24 | 428845 | COPERCHIO PORTA PINZA | LID |
| 25 | 239050 | BIELLA | ROD |
| 26 | 238911 | PROLUNGA APPOGGIO | EXTENTION |

GRUPPO CASSONE NEW NEW FRAME GROUP

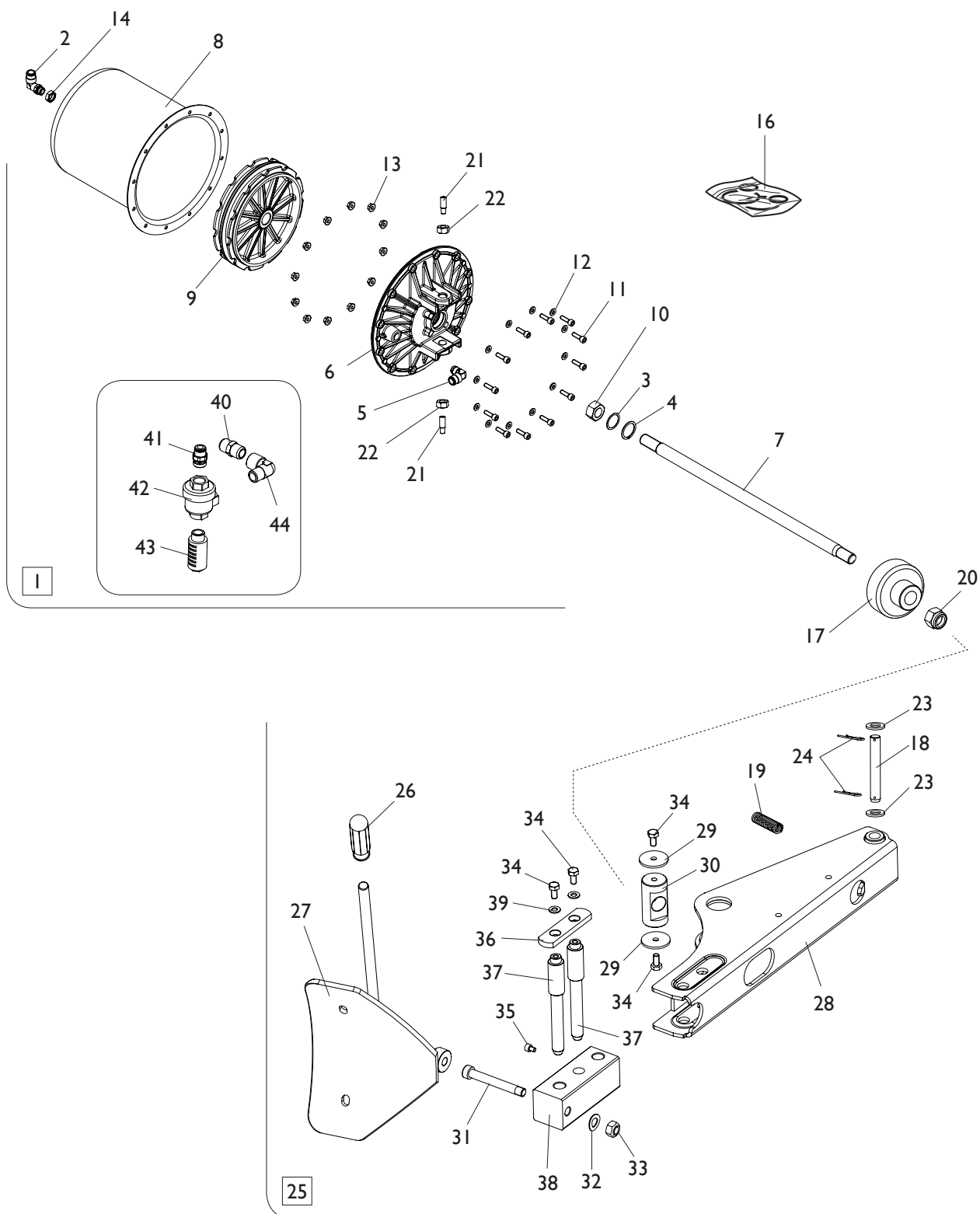
IN PRODUZIONE DA LUGLIO 2019
PRODUCTION SINCE JULY 2019



[TORNA AL COMPLESSIVO](#)
[RETURNS TO OVERALL](#)

| Rif. Ref. | Codice Code | Descrizione | Description |
|--------------|-----------------|--------------------------------|---------------------------------|
| 1 | 2-01885 | VTSP EI M6X25 | CSK SCREW SOCKET M6X25 |
| 2 | 436199 | APPOGGIO CERCHIO LUNGO | RIM SUPPORT |
| 3 | 422019 | PIEDE | FOOT |
| 4 | 318183 | RONDELLA D.12,5X37,5X6 | WASHER D.12,5X37,5X6 |
| 5 | 2-00310 | VTCEI M6X20 | HEXAGON SOCKET HEAD SCREW M6X20 |
| 6 | 2-00211 | RONDELLA D.6 | WASHER D.6 |
| 7 | 331055 | PERNO PALO | ARM PIN |
| 8 | 358135 | PORTAGRASSO | BRACKET |
| 9 | 5-101008 | COFANO CON ADESIVI | COVER WITH LABEL |
| 10 | 2-03816 | VTBEI M10X65 | SCREW M10X65 |
| 11 | 4-109098 | PROTEZIONE PALO | ARM COVER |
| 12 | 2-01225 | VTE M12X25 | HEXAGON HEAD SCREW M12X25 |
| 13 | 346545 | CAVALLOTTO SEPARATORE | PROTECTION |
| 14 | 339456 | PERNO MANIGLIA | HANDLE PIN |
| 15 | 425219 | MANOPOLA | HANDLE |
| 16 | 339046 | PERNO CORTO | SHORT PIN |
| 17 | 2-00047 | COPIGLIA D.3X30 | PLUG D.3X30 |
| 18 | 2-01122 | SEEGER D.15 | SEEGER D.15 |
| 19 | 437830 | TAPPO OVALE D.45X20 H10 | CAP D.45X20 H10 |
| 20 | 2-01979 | DADO ES.A. M6 | AULOCKING HEXAGON NUT M6 |
| 21 | 2-00113 | DADO ES. M10 | HEXAGON NUT M10 |
| 22 | 2-71543 | ROSETTA D.10 | WASHER D.10 |
| 23 | 4-137170 | SUPPORTO PEDALIERA | PEDAL SUPPORT |
| 24 | 428845 | COPERCHIO PORTA PINZA | LID |
| 25 | 239050 | BIELLA | ROD |
| 26 | 238911 | PROLUNGA APPOGGIO | EXTENTION |
| 27 | 2-01045 | RONDELLA D.16 | WASHER D.16 |

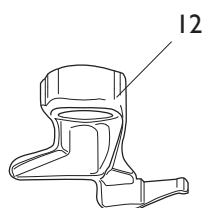
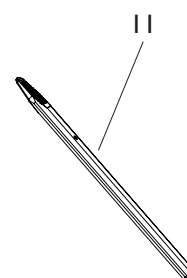
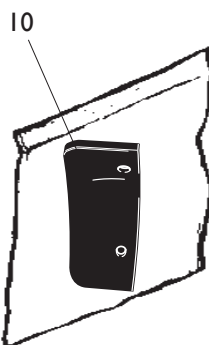
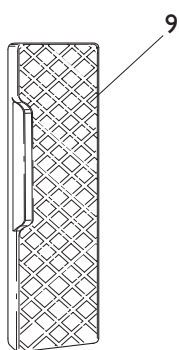
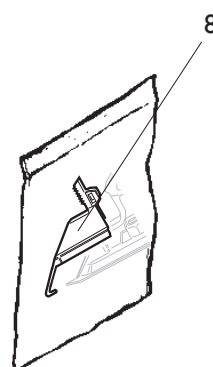
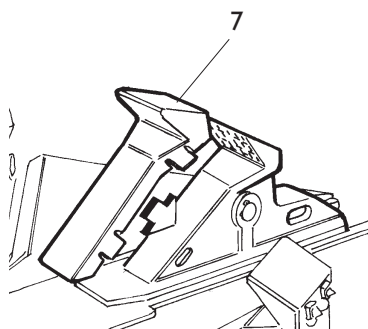
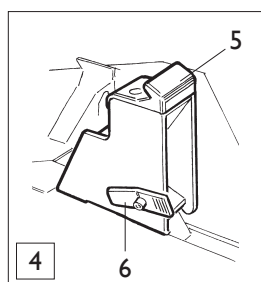
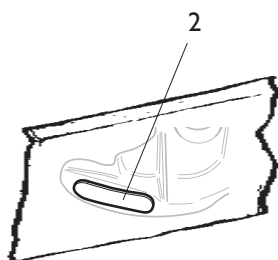
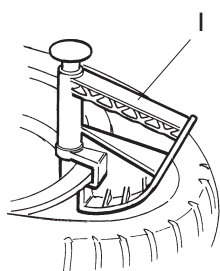
GRUPPO STALLONATORE BEAD BREAKING GROUP



[TORNA AL COMPLESSIVO
RETURNS TO OVERALL](#)

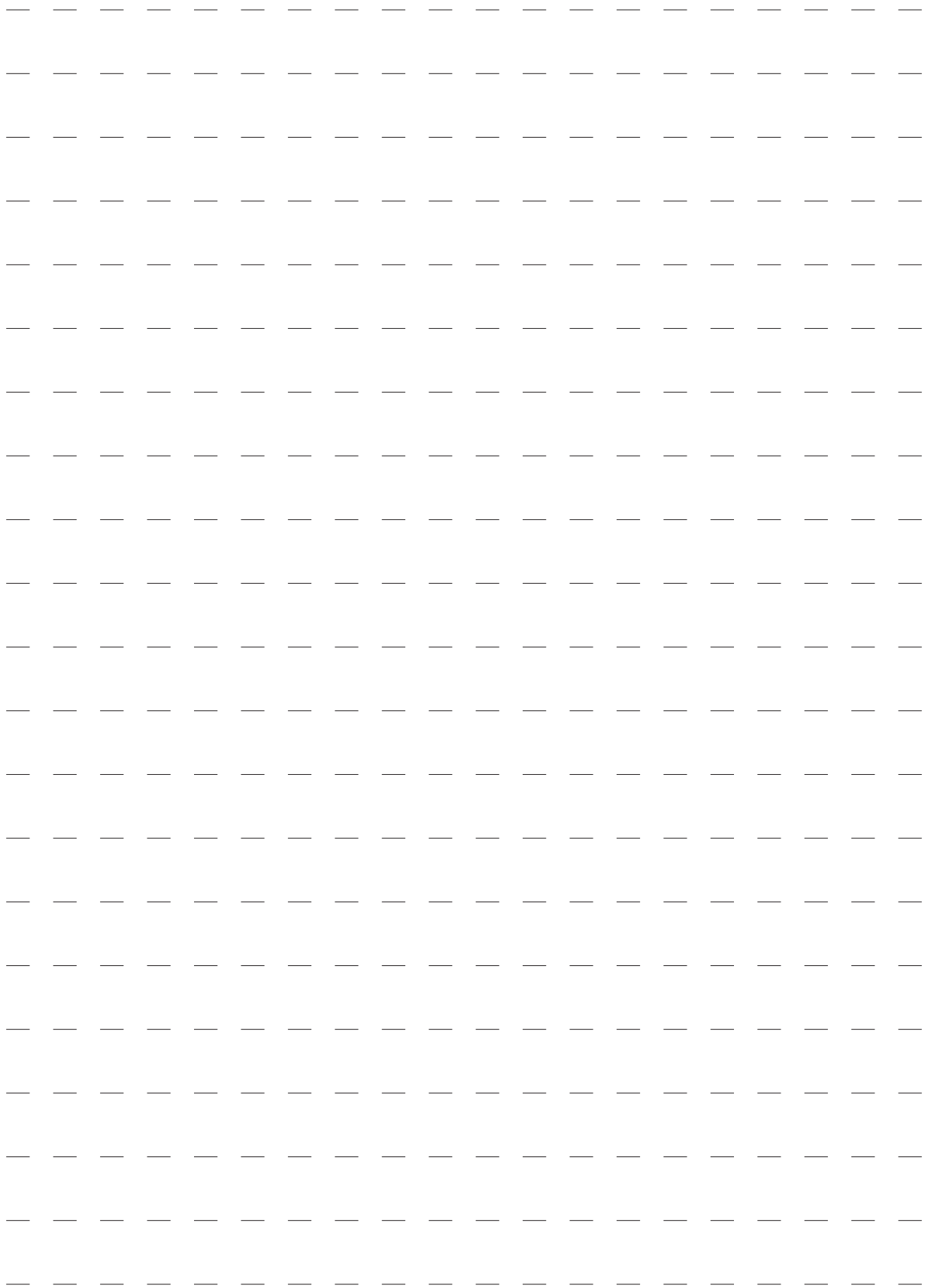
| Rif. Ref. | Codice Code | Descrizione | Description |
|--------------|-----------------|--|---|
| 1 | 5-100484 | CILINDRO STALL. (NO VALVOLA) | BEAD BREAKER CYL. (VALVE NOT INCLUDED) |
| 1 | 5-100511 | CILINDRO STALL. (CON VALVOLA) | BEAD BREAKER CYL. (VALVE INCLUDED) |
| 2 | 3-00517 | RACCPN-LO G1/4GO T10 | LO-FITTING G1/4GO T10 |
| 3 | 325561 | RONDELLA D.24X29,8X0,5 | WASHER D.24X29,8X0,5 |
| 4 | 434031 | ANELLO D.30 | SEEGER D.30 |
| 5 | 3-00222 | RACCPN-L G1/4C T10 | L-FITTING G1/4C T10 |
| 6 | 351905 | FLANGIA D.186 | FLANGE D.186 |
| 7 | 4-101628 | STELO D.20X515 | STEM D.20X515 |
| 8 | 330190 | CILINDRO D.186 | CYLINDER D.186 |
| 9 | 337848 | PISTONE D.186X44 | PISTON D.186X44 |
| 10 | 2-00989 | DADO ES. M18X1,5 | HEXAGON NUT M18X1,5 |
| 11 | 2-00310 | VTCEI M6X20 | HEXAGON SOCKET HEAD SCREW M6X20 |
| 12 | 2-00211 | RONDELLA D.6 | WASHER D.6 |
| 13 | 436779 | DADO ES.A. M6 | AUTOLOCKING HEXAGON NUT M6 |
| 14 | 333524 | DADO 1/4 | NUT 1/4 |
| 16 | 238212 | KIT GUARNIZIONI CILINDRO D.186 | SEAL KIT CYLINDER D.186 |
| 17 | 5-122642 | TAMPONE DISTANZIALE | SPACER |
| 18 | 323903 | FULCRO BRACCIO STALLONATORE | FULCRUM PIN |
| 19 | 4-104313 | MOLLA TRAZIONE D.23X3X133 | SPRING D.23X3X133 |
| 20 | 2-01242 | DADO ES.A. M18X1,5 | AUTOLOCKING HEXAGON NUT M18X1,5 |
| 21 | 431864 | VITE SPECIALE FISS. CILINDRO M14X42 | SPECIAL SCREW M14X42 |
| 22 | 2-00992 | DADO ES. M14 | HEXAGON NUT M14 |
| 23 | 2-01045 | RONDELLA D.16 | WASHER D.16 |
| 24 | 435055 | COPIGLIA D.2X40 | PLUG D.2X40 |
| 25 | 245743 | BRACCIO STALLONATORE | BEAD BREAKER ASSEMBLY |
| 26 | 425219 | MANOPOLA | KNOB |
| 27 | 224000 | PALETTA | BEAD BREAKER |
| 28 | 245701 | BRACCIO | ARM |
| 29 | 323901 | RONDELLA D. 8,25X40X3 | WASHER D. 8,25X40X3 |
| 30 | 339045 | PERNO ORIENTABILE | PIN |
| 31 | 324008 | VITE SPECIALE M12X90 | SPECIAL SCREW M12X90 |
| 32 | 2-02249 | RONDELLA ELASTICA 13X24 | ELASTIC WASHER 13X24 |
| 33 | 422255 | DADO AUTOFR. TRISTOP M12 | TRISTOP AUTOLOCKING NUT M12 |
| 34 | 2-00372 | VITE M8X12 | HEXAGON HEAD SCREW M8X12 |
| 35 | 2-01006 | VTCEI M6X8 | HEXAGON SOCKET HEAD SCREW M6X8 |
| 36 | 345616 | FISSAGGIO PUNTE | LOCKING PEAK RETAINER |
| 37 | 345617 | PUNTA DI BLOCCAGGIO | PEAK RETAINER |
| 38 | 345618 | BLOCCHETTO PROLUNGA | EXTENSION BLOCK |
| 39 | 2-01299 | RONDELLA D.9X24X2 | WASHER D.9X24X2 |
| 40 | 3-00141 | RACCPN-NIPPLO-G1/4C | FITTING-NIPPLO-G1/4C |
| 41 | 3-00462 | RACCPN-D-G1/4C-T10 | D-FITTING-G1/4C-T10 |
| 42 | 3-00317 | VALVOLA VSR G1/4 | VALVE VSR G1/4 |
| 43 | 3-00182 | SILENZIATORE PLASTICA G1/4 | PLASTIC SILENCER G1/4 |
| 44 | 3-00136 | RACCPN-L-G1/4 | L-FITTING-G1/4 |

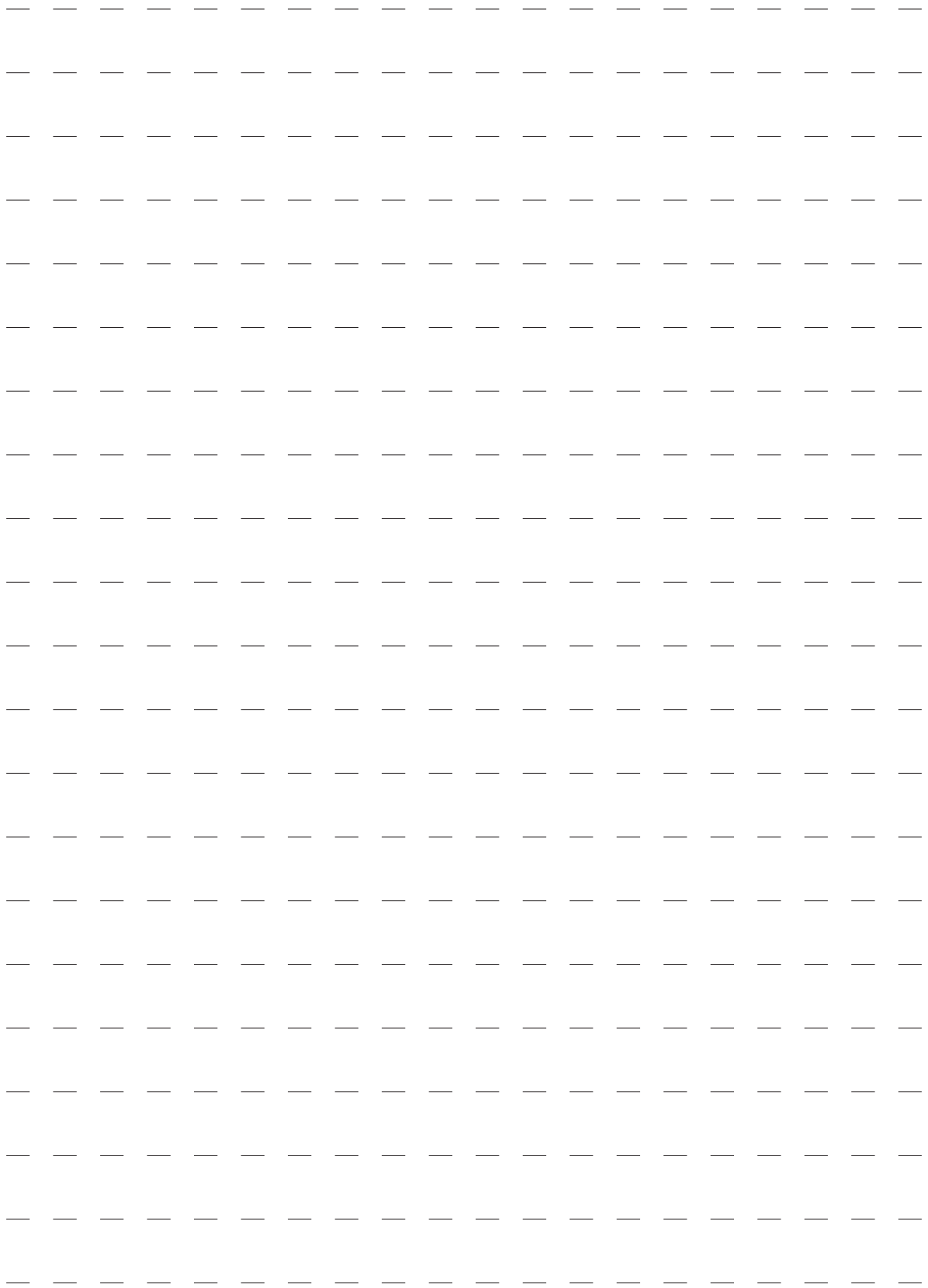
ACCESSORI ACCESSORIES



[TORNA AL COMPLESSIVO](#)
[RETURNS TO OVERALL](#)

| Rif. Ref. | Codice Code | Descrizione | Description |
|--------------|----------------|-----------------------------|------------------------------------|
| 1 | 801435685 | PINZA PREMITALLONE | PLIERS MOUNTING TOOL |
| 2 | 8-11100107 | KIT 5 PASTIGLIE TORRETTA | PROTECTION HEAD KIT (5 PZ) |
| 3 | 8-11100106 | KIT 10 INSERTI TORRETTA | PROTECTION HEAD KIT (10 PZ) |
| 4 | 801258650 | KIT 4 ATTACCHI MOTO 15-23" | MOTO ADAPTOR KIT 15-23" (4 PZ) |
| 5 | 435202 | CUNEO BLOCCAGGIO MOTO | PLASTIC WEDGE |
| 6 | 426746 | CRICCHETTO DI BLOCCAGGIO | LOCKING |
| 7 | 8-11100108 | KIT 12 PROTEZIONI INTERNE | INTERNAL PROTECTION KIT (12 PZ) |
| 8 | 8-11100109 | KIT 12 PROTEZIONI ESTERNE | EXTERNAL PROTECTION KIT (12 PZ) |
| 9 | 801458663 | PROTEZIONE APPOGGIO CERCHIO | RIM PROTECTION |
| 10 | 8-11100105 | KIT 6 PROTEZIONI PALETTA | BEAD BREAKER PROTECTION KIT (6 PZ) |
| 11 | 8-11100104 | KIT 6 PROTEZIONI LEVA | LEVER PROTECTION KIT (6 PZ) |
| 12 | 801252083 | KIT TORRETTA 8" | HEAD KIT 8" |





Code 4-103961J



Il disegno è realizzato con tutti i particolari ma solo quelli codificati sono forniti come ricambi. L'Azienda si riserva la facoltà di apportare modifiche senza preavviso.

Production date : 07 / 2019

The drawing shows all parts but only the coded parts are supplied as spares. The Company reserves the right to make modifications without prior notice.