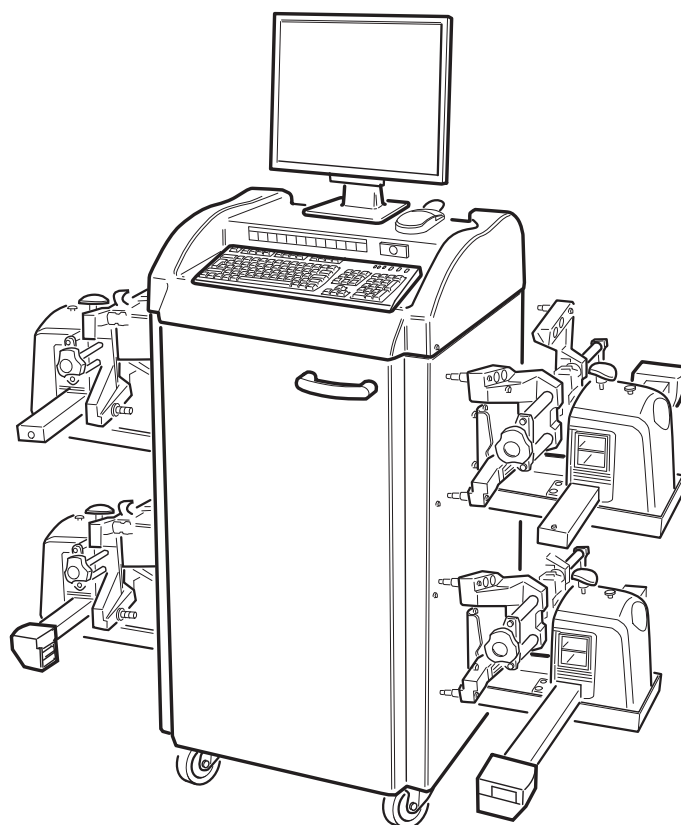


# EXACT 70 PLUS

Pezzi di ricambio / Spare parts list



Code: 4-116474C

Production date: 01 / 2020



[www.corghi.com](http://www.corghi.com) - [info@corghi.com](mailto:info@corghi.com)

## I

**Sul presente documento sono stati evidenziati con colore grigio i ricambi consigliati e indicati in grassetto i codici che sono variati rispetto a quelli riportati nella precedente versione del 07/17**

## EN

**In this document, the recommended spare parts have been highlighted in gray, while in bold you find those codes which are different if compared with the previous version dated 07/17**

## DE

**Im vorliegenden Dokument wurden die empfohlenen Ersatzteile in grauer Farbe hervorgehoben; die Teilenummern in Fettdruck haben sich beziehend auf die vorherige Version vom 07/17 geändert.**

## FR

**Dans ce document, les pièces de rechange préconisées sont soulignées en gris, tandis que les références différentes par rapport à la version précédente du 07/17 sont en gras**

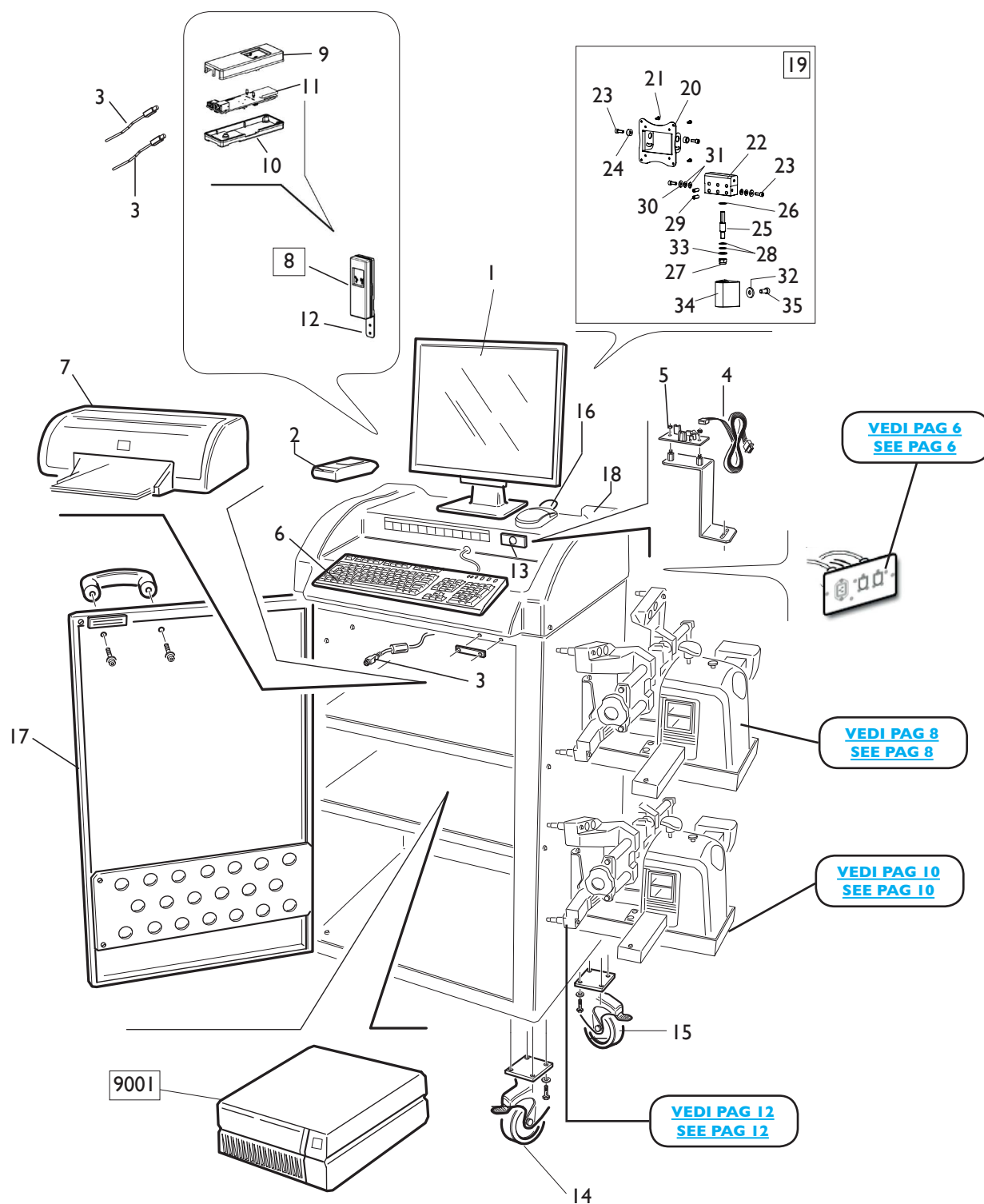
# SOMMARIO

# CONTENTS

COMPLESSIVO EX70 PLUS	
EX70 PLUS OVERALL .....	4
IMPIANTO ELETTRICO	
ELECTRICAL WIRING .....	6
GRUPPO TESTINA	
WHEEL MEASURING UNIT .....	8
GRUPPO RICARICA TESTINA	
MEASURING CHARGING GROUP .....	10
ACCESSORI	
ACCESSORIES .....	12
STAFFA VETTURA 10-19" - STAFFA CAMION 17,5-25"	
CAR BRACKET 10-19" - TRUCK BRACKET 17,5-25" .....	14
STAFFA VETTURA 10-21"	
CAR BRACKET 10-21" .....	16
STAFFA VETTURA 10-26"	
CAR BRACKET 10-26" .....	18
STAFFE VETTURA RAPIDE	
FAST CAR BRACKETS .....	20
PIATTO ROTANTE BASSO-MEDIO-ALTO	
ROTATING PLATFORM LOW-MEDIUM-HIGH .....	22
PIATTO ROTANTE CON ENCODER	
ROTATING PLATFORM WITH ENCODER .....	24
PIATTO ROTANTE H.50	
ROTATING PLATFORM H.50 .....	26
PIATTO ROTANTE PRO ELETTRONICO	
PRO ELECTRONIC ROTATING PLATFORM .....	28
PIATTO ROTANTE AUTOBLOCCANTE	
SELF-CENTERING ROTATING PLATFORM .....	30

# COMPLESSIVO EX70 PLUS

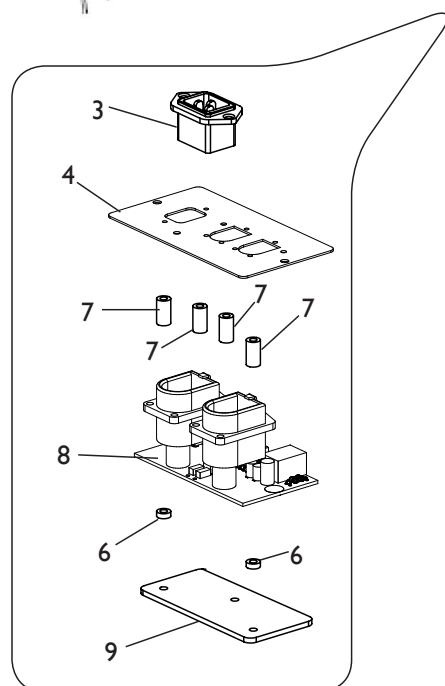
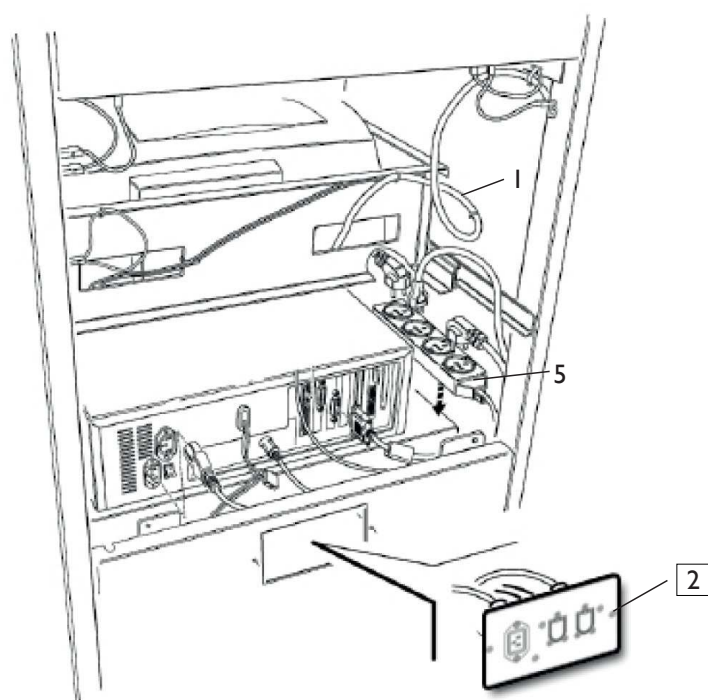
## EX70 PLUS OVERALL



Rif. Ref.	Codice Code	Descrizione	Description
9001	5-101416	PC CON LICENZA WINDOWS 7	PC WITH WINDOWS 7 LICENSE
<b>9001</b>	<b>5-122937</b>	<b>PC CON LICENZA WINDOWS 10</b>	<b>PC WITH WINDOWS 10 LICENSE</b>
9001	5-102836	PC CON LICENZA WINDOWS 7 +SW	PC WITH WINDOWS 7 LICENSE WITH SW
<b>9001</b>	<b>5-124655</b>	<b>PC CON LICENZA WIN. 10 +SW</b>	<b>PC WITH WIN. 10 LICENSE WITH SW</b>
9001.1	4-105812	HARD DISK	HARD DISK
9001.2	4-100068	LETTORE DVD	DRIVE DVD
9001.3	5-200659	ALIMENTATORE	POWER SUPPLY
1	4-103594	MONITOR LCD <b>17"</b>	MONITOR LCD <b>17"</b>
1	3-01952	MONITOR LCD <b>19"</b>	MONITOR LCD <b>19"</b>
2	5-102673	TELECOMANDO AD INFRAROSSI	INFRARED REMOTE CONTROL
3	5-102743	CAVO STAMPANTE USB CON FERRITI	USB PRINTER CABLE WITH FERRITES
4	4-111350	CAVO FLAT L.1,5 MT	FLAT CABLE L.1,5 MT
5	5-102681	SK RX TELECOMANDO	BOARD RADIO REMOTE CONTROL
6	4-104387	TASTIERA PC NERA CONNESSIONE USB	PC KEYBOARD USB-BLACK
7	5-106283	STAMPANTE USB	USB PRINTER
8	5-100000	HARDLOCK COMPLETO	COMPLETE HARDLOCK
9	4-101142	COVER ANTERIORE HARDLOCK	HARDLOCK FRONT COVER
10	4-101143	COVER POSTERIORE HARDLOCK	HARDLOCK REAR COVER
11	5-103671	SK HARDLOCK	HARDLOCK BOARD
12	4-111056	STAFFA FISSAGGIO HARDLOCK	HARDLOCK PLATE
13	448513	FILTRO SK RX	BOARD RADIO FILTER
14	444736	RUOTA D.100X35	WHEEL D.100X35
15	435332	RUOTA D.100X40	WHEEL D.100X40
16	489632	MOUSE OTTICO USB	USB OPTICAL MOUSE
17	4-106664/16	SPORTELLLO COMPLETO <b>ROSSO</b>	COMPLETE <b>RED</b> DOOR
17	4-106664/31	SPORTELLLO COMPLETO <b>GRIGIO</b>	COMPLETE <b>GREY</b> DOOR
18	4-106663	PIANALE SUPERIORE <b>ROSSO</b>	<b>RED</b> TOP COVER
18	4-106897	PIANALE SUPERIORE <b>GRIGIO</b>	<b>GREY</b> TOP COVER
19	5-121005	GRUPPO SOSTEGNO MONITOR	MONITOR SUPPORT GROUP
20	4-119950	FLANGIA SUPPORTO MONITOR	MONITOR SUPPORT FLANGE
21	2-00605	VTCIC M4X10	HEAD SCREW CROSS CUT M4X10
22	4-119949	CERNIERA SNODO	SUPPORT
23	2-02378	VTCEI M6X16	HEX. SOCKET HEAD SCREW M6X16
24	4-118830	BOCCOLA D.6,1X15X9	BUSH D.6,1X15X9
25	4-118828	PERNO M10X69,5	PIN M10X69,5
26	310842	RONDELLA D.10,25X20X0,3	WASHER D.10,25X20X0,3
27	2-01019	DADO ES.A. M10	AUTOLOCKING HEX. NUT M10
28	2-02993	ROSETTA D.10	WASHER D.10
29	2-00994	VSTEI M8X20	SCREW M8X20
30	309139	RONDELLA D.6,25X16X2	WASHER D.6,25X16X2
31	3-01756	RONDELLA D.6,2X14X1	WASHER D.6,2X14X1
32	305972	RONDELLA D.8,25X22X3	WASHER D.8,25X22X3
33	2-00213	RONDELLA D.10	WASHER D.10
34	4-105400	BLOCCETTO	BLOCK
35	2-03137	VTBEI M8X16	SCREW M8X16

# IMPIANTO ELETTRICO

## ELECTRICAL WIRING



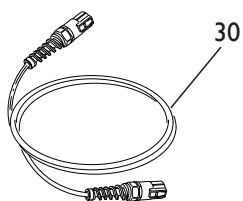
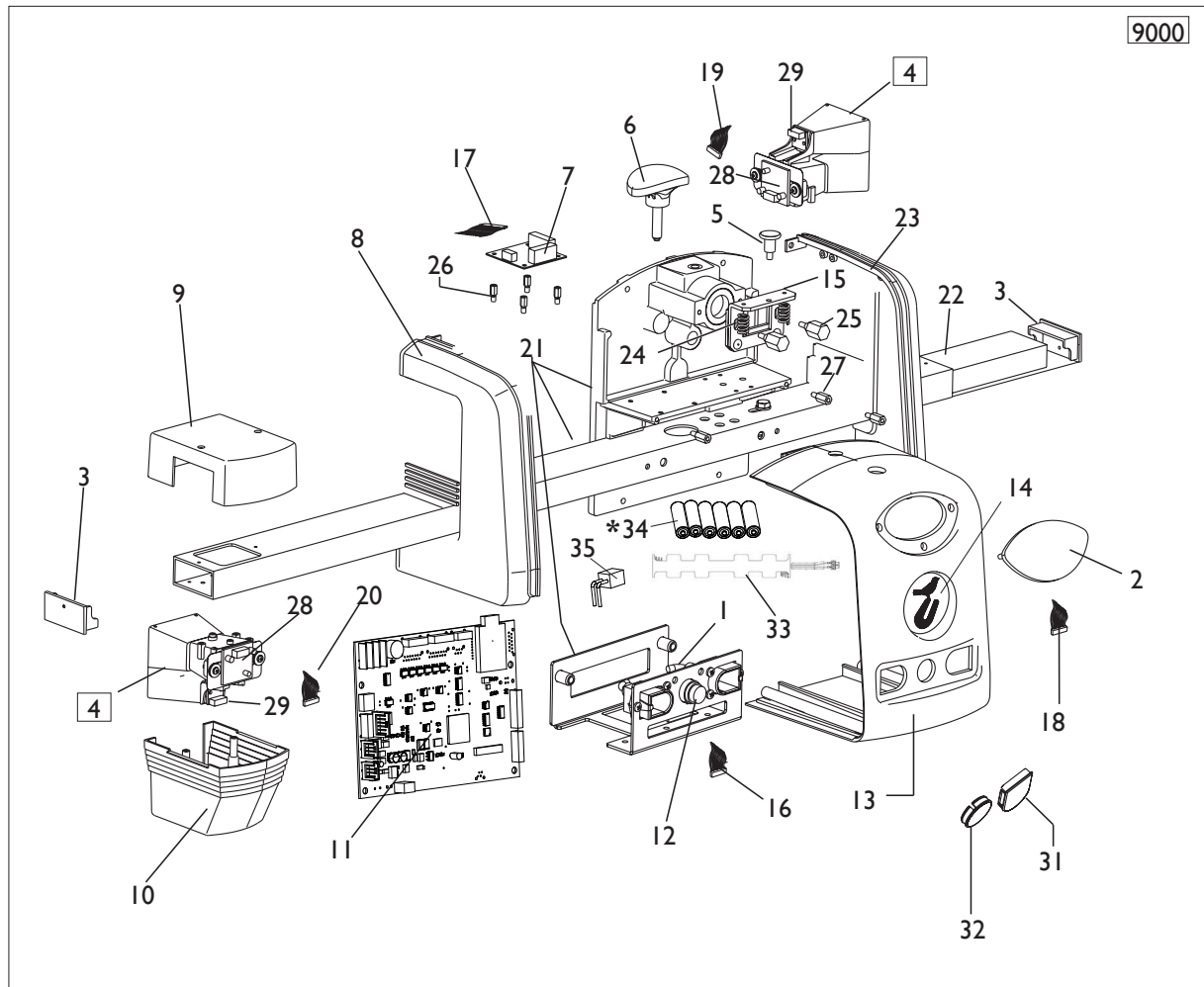
[TORNA AL COMPLESSIVO](#)  
[RETURNS TO OVERALL](#)

Rif. Ref.	Codice Code	Descrizione	Description
1	5-102743	CAVO STAMPANTE USB CON FERRITI	USB PRINTER CABLE WITH FERRITES
2	5-105244	PANNELLO ELETTRICO COMPLETO	COMPLETE ELETTRIC PANEL
3	450708	PRESA APANNELLO	PLUG
4	4-116421	LAMIERA	PLATE
5	5-100446	PRESA MULTIPLA	PLUG
6	445623	DISTANZIALE D. 4X8 L. 3 MM	SPACER D.4X8 L.3MM
7	3-00338	DISTANZIALE D. 4,2X8 L. 15 MM	SPACER D.4,2X8 L. 15 MM
8	5-106044	SK CONCENTRATORE	CONCENTRATOR BOARD
9	4-101637	PANNELLO PROTEZIONE SK	BOARD PROTECTION

# GRUPPO TESTINA WHEEL MEASURING UNIT

**\* Per ogni testina ordinare n.2 pz del codice 4-110935**

**For each sensor head order 2 pcs of code 4-110935**

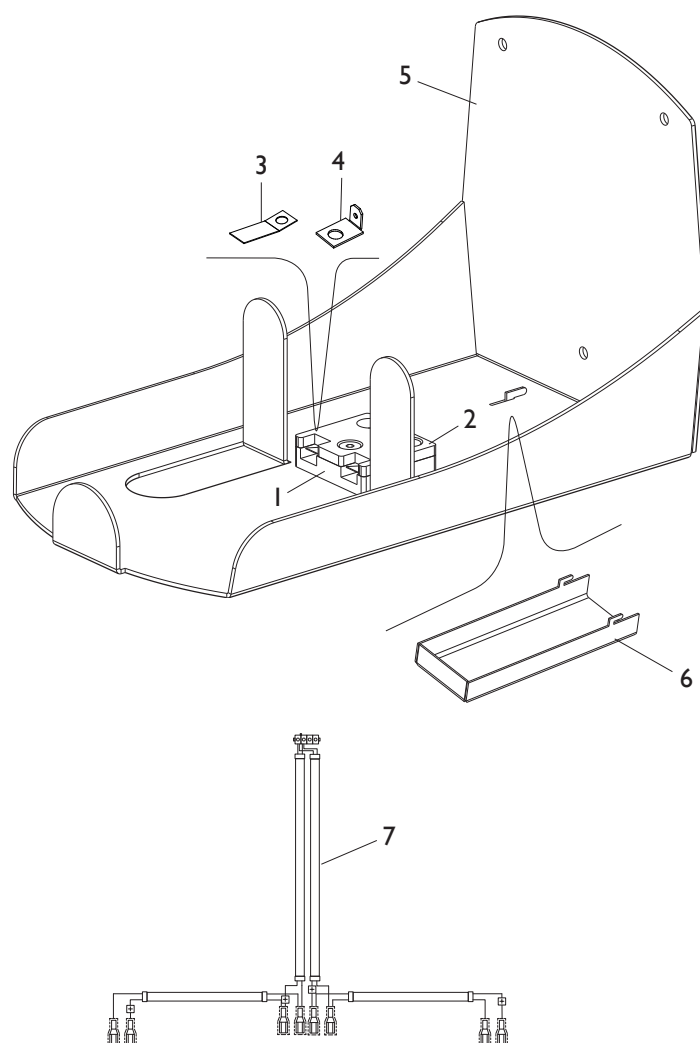


[TORNA AL COMPLESSIVO](#)  
[RETURNS TO OVERALL](#)



Rif. Ref.	Codice Code	Descrizione	Description
9000	5-106064	TESTINA ANTERIORE DX RX <b>ROSSA</b>	<b>RED</b> RX SENSOR HEAD FRONT RH
9000	5-106066	TESTINA POSTERIORE DX RX <b>ROSSA</b>	<b>RED</b> RX SENSOR HEAD REAR RH
9000	5-106063	TESTINA ANTERIORE SX RX <b>ROSSA</b>	<b>RED</b> RX SENSRO HEAD FRONT LH
9000	5-106065	TESTINA POSTERIORE SX RX <b>ROSSA</b>	<b>RED</b> RX SENSOR HEAD REAR LH
9000	5-106068	TESTINA ANTERIORE DX RX <b>GRIGIA</b>	<b>GREY</b> RX SENSOR HEAD FRONT RH
9000	5-106070	TESTINA POSTERIORE DX RX <b>GRIGIA</b>	<b>GREY</b> RX SENSOR HEAD REAR RH
9000	5-106067	TESTINA ANTERIORE SX RX <b>GRIGIA</b>	<b>GREY</b> RX SENSOR HEAD FRONT LH
9000	5-106069	TESTINA POSTERIORE SX RX <b>GRIGIA</b>	<b>GREY</b> RX SENSOR HEAD REAR LH
1	4-102133	CAVO INGRESSO TESTINE	CABLE INPUT SENSOR
2	4-106736	PANNELLO COMANDI	COMAND PANEL
3	456882	TAPPO CHIUSURA CALOTTE	CLOSING CAP CAPS
4	5-101726	GONIOMETRO COMPLETO	COMPLETE GONIOMETER
5	356891	PULSANTE DI SGANCIO	EMERGENCY POWER OFF
6	457928	MANOPOLA M.8 D.30	KNOB M.8 D.30
7	4-100105	INCLINOMETRO	INCLINOMETER
8	456871	CALOTTA TESTINA ANT.SX - POST.DX	COVER SENSOR HEAD FRONT LH - HEAD REAR RH
8	456872	CALOTTA TESTINA ANT.DX - POST.SX	COVER SENSOR HEAD FRONT RH - HEAD REAR LH
9	456876	CALOTTA ESTERNA SUPERIORE	TOP COVER
10	456875	CALOTTA ESTERNA INFERIORE	LOWER COVER
11	4-116000	SK CPU CON MODULO RX	CPU BOARD WITH RADIO MODULE
12	4-101133	SK CON CONNETTORE DIN 8 VIE	BOARD WITH CONNECTOR DIN 8-WAY
13	4-105387	CALOTTA TESTINA ROSSA	RED HEAD COVER
13	4-105573	CALOTTA TESTINA GRIGIA	GREY HEAD COVER
14	457667	ADESIVO LOGO	LABEL
15	260084	FERMO ROC A SPINTA	ROC RETAINER
16	457794	CAVO FLAT 10VIE L.150 MM	FLAT CABLE 10WAY L. 150 MM
17	4-101094	CAVO FLAT 8VIE L. 250 MM	FLAT CABLE 8WAY L. 250 MM
18	4-201613	CAVO FLAT PANNELLO COMANDI	COMAND PANEL FLAT CABLE
19	4-105379	CAVO FLAT L. 150 MM	FLAT CABLE L.150 MM
20	4-105378	CAVO FLAT L. 850 MM	FLAT CABLE L. 850 MM
21	5-102495	MECC.TESTINA ANT.SX - POST. DX+BR E SUPP.	BODY SENSOR FRONT LH - REAR RH
21	5-102496	MECC.TESTINA ANT.DX - POST. SX+BR E SUPP.	BODY SENSOR FRONT RH - REAR LH
22	357025	CONTRAPPESO	COUNTERWEIGHT
23	356871	CALOTTA TESTINA ANT.DX - POST.SX	COVER SENSOR HEAD FRONT RH - HEAD REAR LH
23	356872	CALOTTA TESTINA ANT.SX - POST.DX	COVER SENSOR HEAD FRONT LH - HEAD REAR RH
24	456888	MOLLA	SPRING
25	360087	PERNO SICURA	SECURITY PIN
26	357791	DISTANZIALE INCLINOMETRO	INCLINOMETER SPACER
27	449005	DISTANZANZIALE GONIOMETRO	GONIOMETER SPACER
28	4-101000	SK OTTICA	OPTICAL BOARD
29	456664	SK FARI	BOARD
30	4-101019	CAVO COLL. SENSORI L.4,5 MT	SENSOR CABLE L.4,5 MT
30	4-101018	CAVO COLL. SENSORI L.6,5 MT	SENSOR CABLE L.6,5 MT
30	8-33200012	CAVO COLL. SENSORI L.16 MT	SENSOR CABLE L.16 MT
31	4-105409	TAPPO CONNETTORE 4 VIE	PLUG CONNECTOR 4WAY
32	4-105410	TAPPO CONNETTORE DIN 8VIE	PLUG CONNECTOR 8WAY
33	5-107736	PORTA BATTERIE CON CONNETTORE	BATTERY HOLDER WITH CONNECTOR
*34	4-110935	BLISTER 4 BATTERIE RICARICABILE	BLISTER 4 RECHARGEABLE BATTERIES
35	4-201657	CAVO ALIMENTAZIONE BATTERIA	BATTERY POWER CABLE

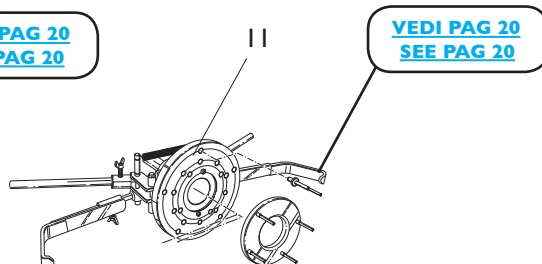
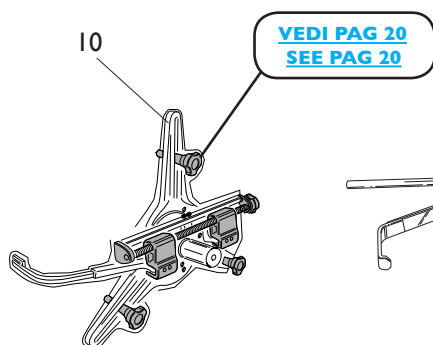
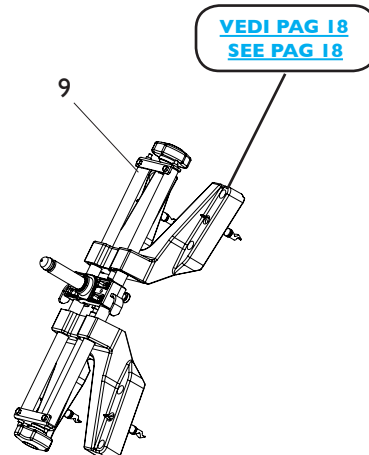
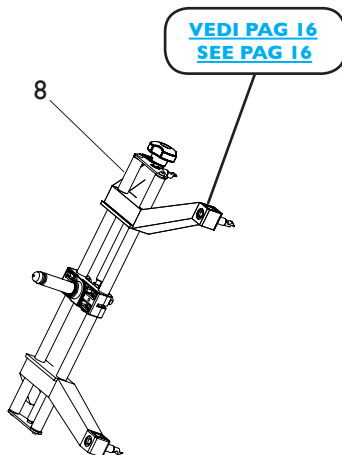
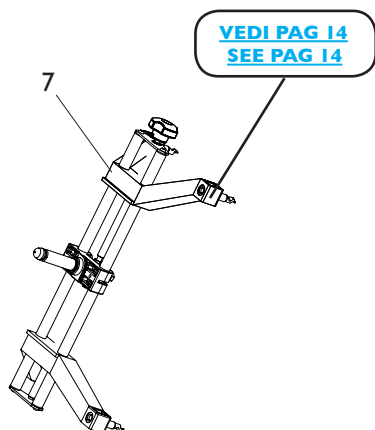
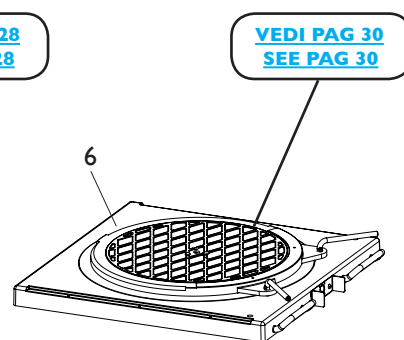
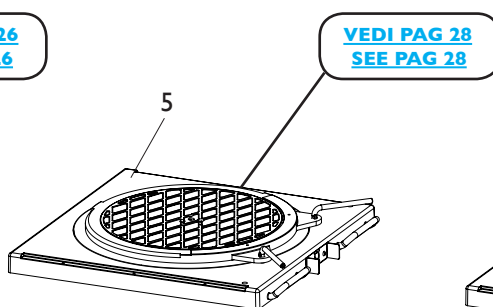
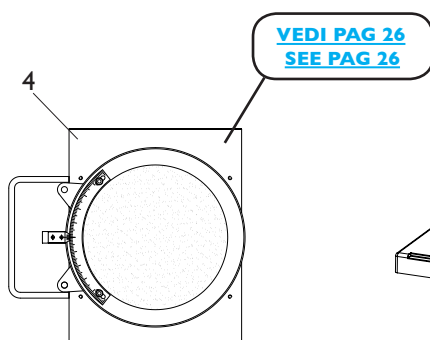
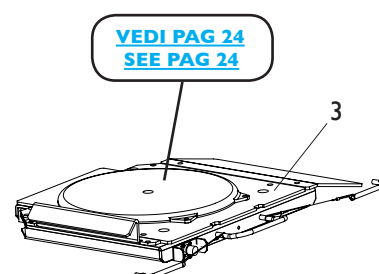
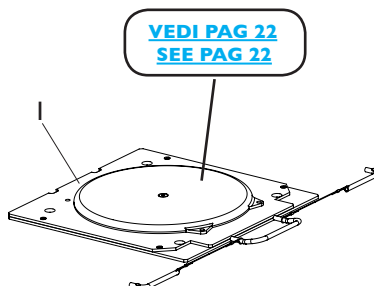
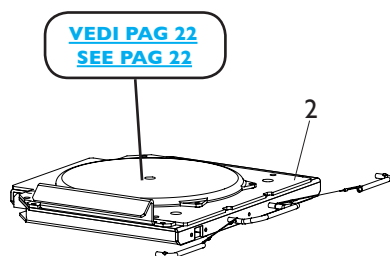
# GRUPPO RICARICA TESTINA MEASURING CHARGING GROUP



[TORNA AL COMPLESSIVO](#)  
[RETURNS TO OVERALL](#)

Rif. Ref.	Codice Code	Descrizione	Description
1	4971	PIASTRA INFERIORE	LOWER PLATE
2	4972	PIASTRA SUPERIORE	TOP PLATE
3	4985	LAMELLA PRESA CORRENTE 15°	PLATE POWER SOCKET 15°
4	4986	LAMELLA PRESA CORRENTE 90°	PLATE POWER SOCKET 90°
5	4-106933	SUPPORTO STAFFA	BRACKET SUPPORT
6	4-106654	CARTER INFERIORE	LOWER COVER
7	4-106896	CAVO RICARICA SENSORI	CHARGING CABLE SENSORS

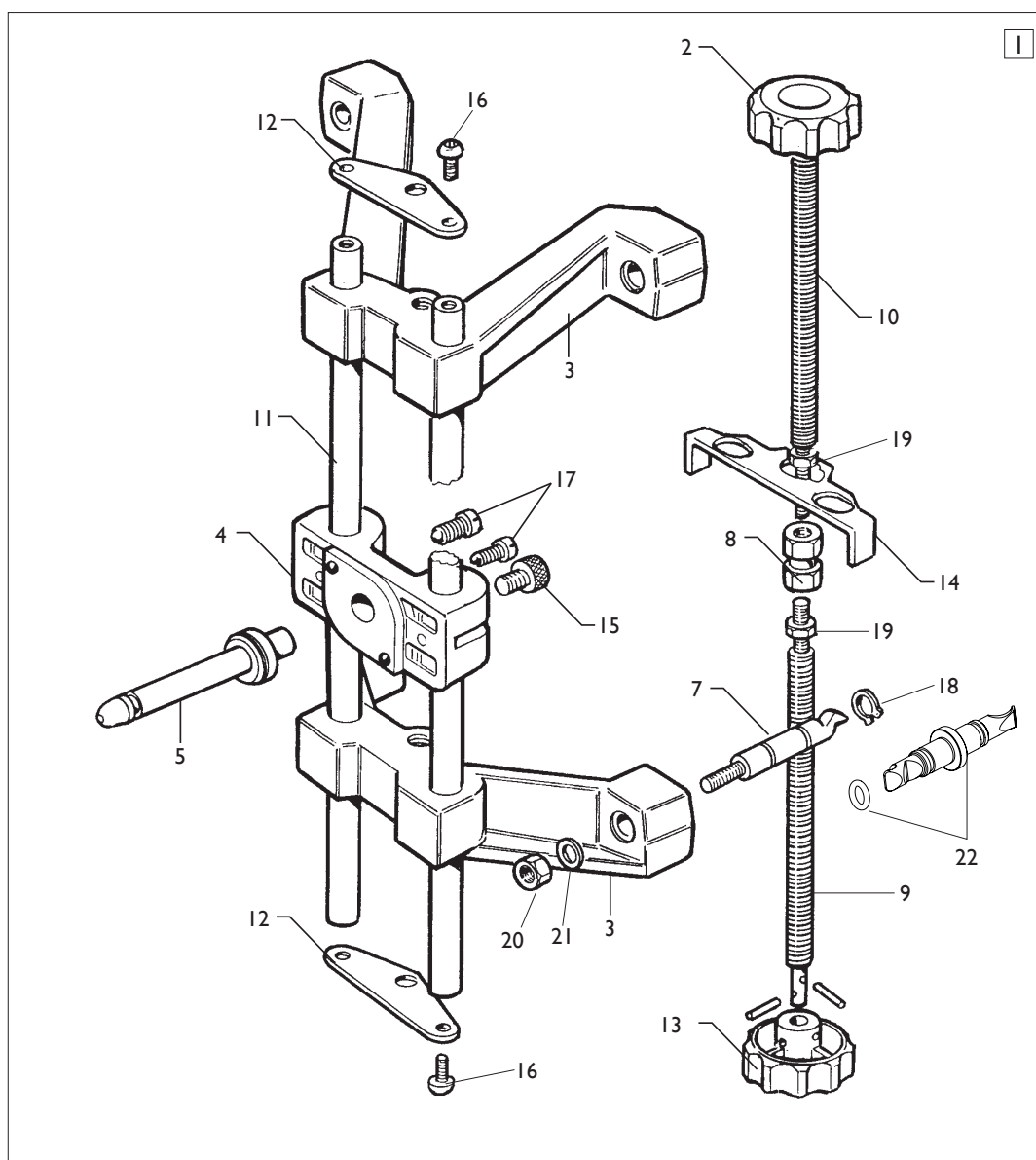
# ACCESSORI ACCESSORIES



**TORNA AL COMPLESSIVO  
RETURNS TO OVERALL**

Rif. Ref.	Codice Code	Descrizione	Description
1	803229274	PIATTO ROTANTE <b>BASSO</b>	ROTATING PLATFORM <b>LOW</b>
1	801227745	PIATTO ROTANTE <b>MEDIO</b>	ROTATING PLATFORM <b>MEDIUM</b>
2	804241069	PIATTO ROTANTE <b>ALTO</b>	ROTATING PLATFORM <b>HIGH</b>
2	5-105579	PIATTO ROTANTE <b>ALTO H.50</b>	ROTATING PLATFORM <b>HIGH H.50</b>
3	248593	PIATTO ROTANTE <b>CON ENCODER</b>	ROTATING PLATFORM <b>WITH ENCODER</b>
4	268864	PIATTO ROTANTE <b>SCALA GRADUATA</b>	ROTATING PLATFORM <b>GRADUATED SCALE</b>
5	261976	PIATTO ROTANTE <b>PRO ELETTRONICO</b>	<b>PRO ELECTRONIC</b> ROTATING PLATFORM
6	5-100395	PIATTO ROTANTE <b>AUTOBLOCCANTE</b>	<b>SELF CENTERING</b> ROTATING PLATFORM
7	250353	STAFFA AUTOCEN. VETTURA <b>10-19"</b>	COACH CHUCK BRACKET <b>10-19"</b>
8	8-33100130	STAFFA AUTOCEN. VETTURA <b>10-21"</b>	COACH CHUCK BRACKET <b>10-21"</b>
9	8-33100035	STAFFA AUTOCEN. VETTURA <b>10-26"</b>	COACH CHUCK BRACKET <b>10-26"</b>
10	8-33100025	STAFFA RAPIDA <b>9-21"</b>	FAST BRACKET <b>9-21"</b>
11	8-33100041	STAFFA <b>BMW-MERCEDES</b>	<b>BMW-MERCEDES</b> BRACKET

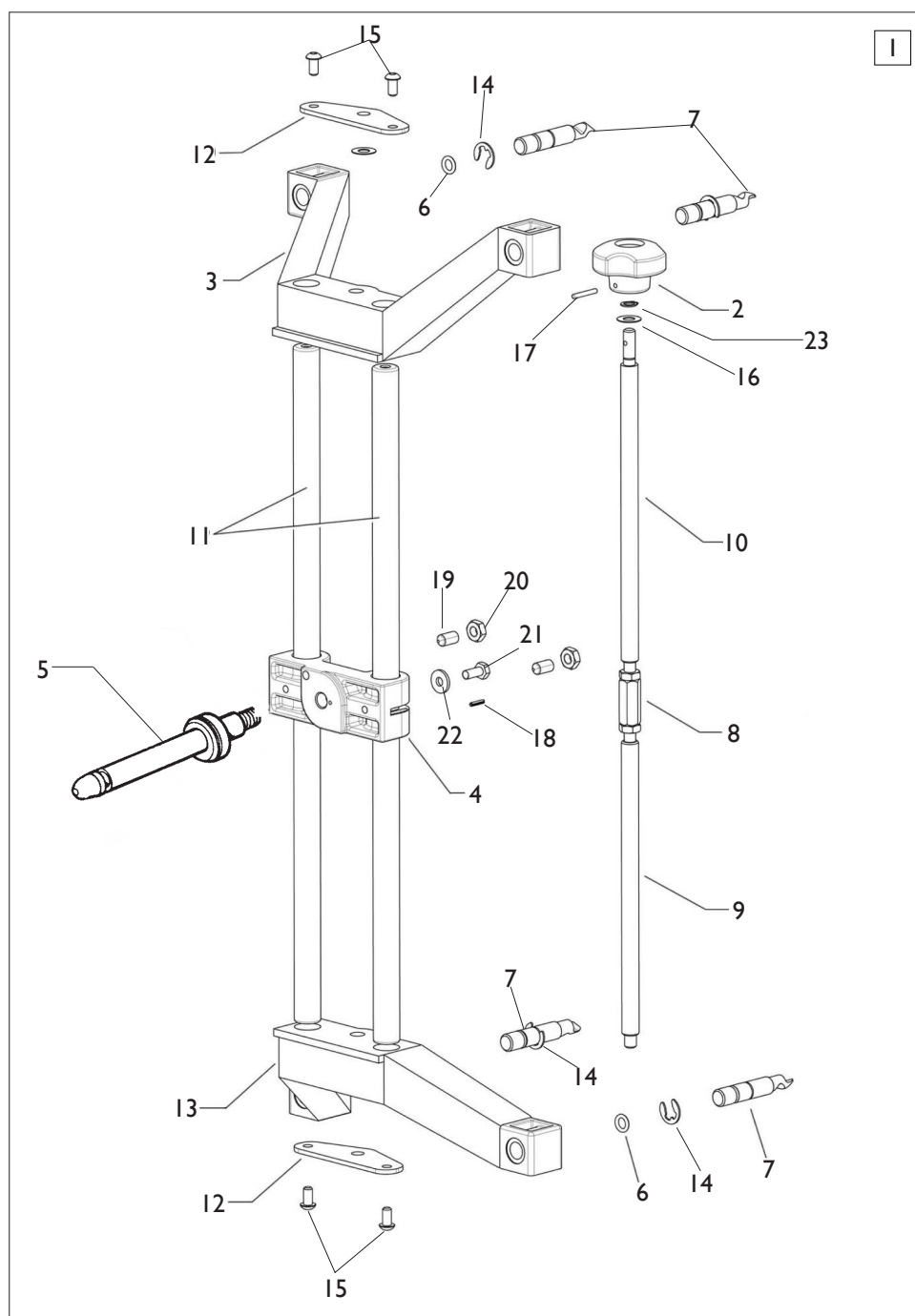
# STAFFA VETTURA 10-19" - STAFFA CAMION 17,5-25" CAR BRACKET 10-19" - TRUCK BRACKET 17,5-25"



[TORNA AL COMPLESSIVO](#)  
[RETURNS TO OVERALL](#)

Rif. Ref.	Codice Code	Descrizione	Description
1	250353	STAFFA AUTOCEN. <b>VETTURA</b> 10-19"	<b>CAR</b> COACH CHUCK BRACKET 10-19"
1	803250354	STAFFA AUTOCEN. <b>CAMION</b> 17,5-25"	<b>TRUCK</b> COACH CHUCK BRACKET 17,5-25"
2	354079	MANOPOLA D.50 NERA FORATA	BLACK PERFORATED KNOB D.50
3	354028	STAFFA <b>VETTURA</b> DX	<b>CAR</b> BRACKET DX
3	354029	STAFFA <b>VETTURA</b> SX	<b>CAR</b> BRACKET SX
3	5-106274	STAFFA <b>CAMION</b> DX	<b>TRUCK</b> BRACKET DX
3	5-106275	STAFFA <b>CAMION</b> SX	<b>TRUCK</b> BRACKET SX
4	362564	BLOCCHETTO LAVORATO	MACHINED BLOCK
5	362565	PERNO	PIN
7	330998	PUNTALE STAFFA <b>CAMION</b>	<b>TRUCK</b> BRACKET FERRULE
8	337837	ATTACCO BARRA FILETTATA M8	M8 THREADED BAR ATTACK
9	337840	VITE CON FILETTO SX	LEFT-HAND THREAD BAR
10	337839	VITE CON FILETTO DX	RIGHT-HAND THREAD BAR
11	354031	GUIDA	GUIDE
12	354030	PIASTRINA DI COLLEGAMENTO	CONNECTING PLATE
13	354078	MANOPOLA D.50 ROSSA FORATA	RED PERFORATED KNOB D.50
14	354032	INNESTO AUTOCENTRANTE	SPINDLE MOUNT
15	337846	VITE OTTONE ZIGRINATA	KNURLED BRASS SCREW
16	2-02182	VTCEI B. 8.8 ZI M5X6	HEAD SCREW HEX. SOCKET LOW M5X6
17	421227	VITE CON SFERA M8X16	BALL SCREW M8X16
18	2-00025	ANELLO EL. D.12	SEGER D.12
19	2-00151	DADO ES.N. BR M8	NORMAL HEXAGONAL NUT M8
20	2-01257	DADO ES.N.A. ZI M6	AUTO LOCKING HEXAGONAL NUT M6
21	309139	RONDELLA D.6,25X16X2	WASHER D.6,25X16X2
22	5-101106	PUNTALE DOPPIO CON OR <b>VETTURA</b>	<b>CAR</b> DOUBLE FERRURE WITH O-RING

# STAFFA VETTURA 10-21” CAR BRACKET 10-21”

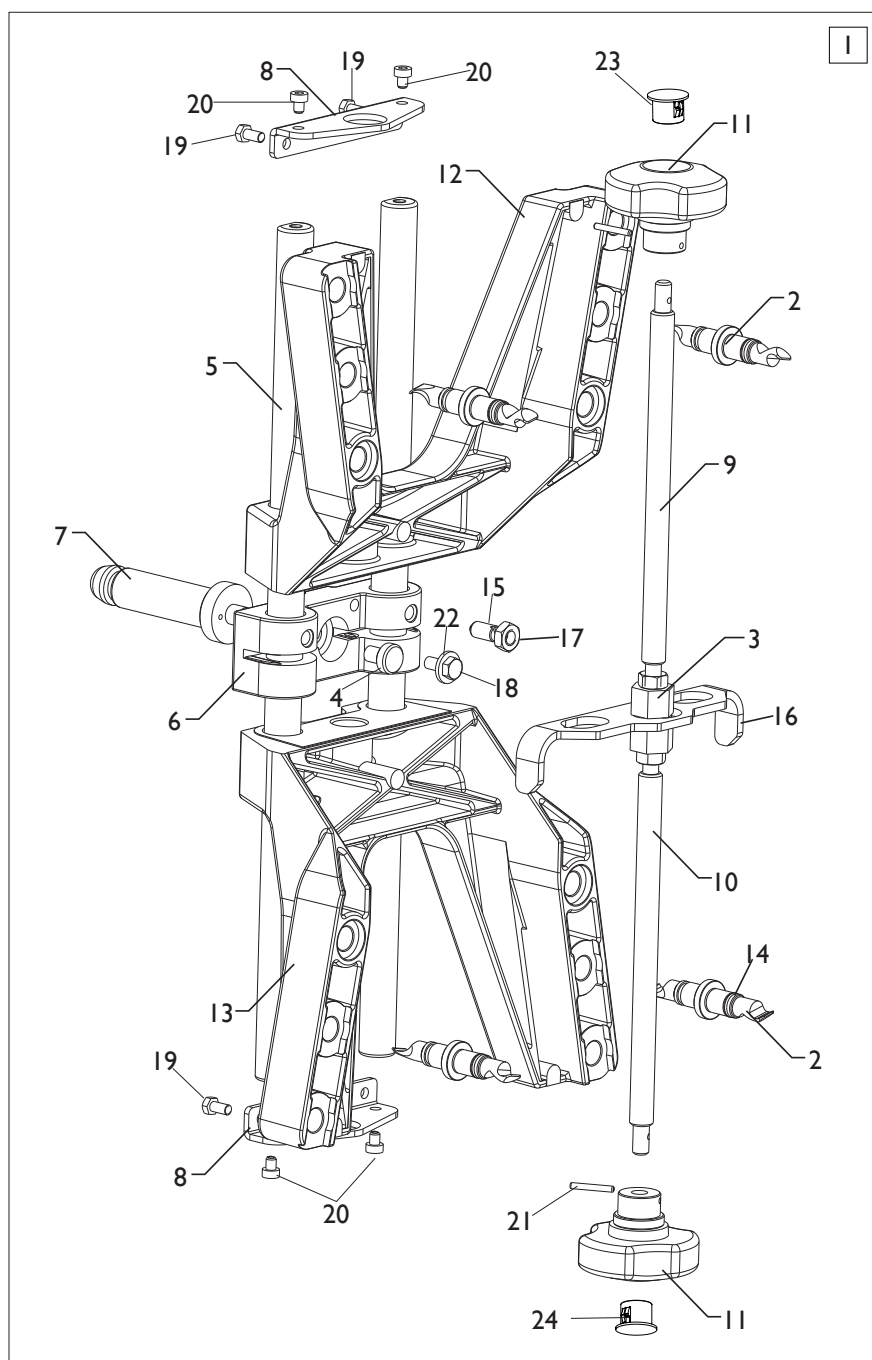


[TORNA AL COMPLESSIVO](#)  
[RETURNS TO OVERALL](#)



Rif. Ref.	Codice Code	Descrizione	Description
1	8-33100130	STAFFA AUTOCEN. VETTURA 10-21"	COACH CHUCK BRACKET 10-21"
2	354079	MANOPOLA D.50 NERA FORATA	BLACK PERFORATED KNOB D.50
3	354029	STAFFA FILETTO SX	LEFT THREAD BRACKET
4	362564	BLOCCHETTO LAVORATO	MACHINED BLOCK
5	362565	PERNO	PIN
6	4-103225	GUARNIZIONE OR D.7,6X2,4	O-RING D.7,6X2,4
7	4-113001	PUNTALE STAFFA	BRACKET FERRULE
8	4-113000	ATTACCO BARRA FILETTATA M8	M8 THREADED BAR ATTACK
9	4-112999	VITE CON FILETTO SX	LEFT-HAND THREAD BAR
10	4-112998	VITE CON FILETTO DX	RIGHT-HAND THREAD BAR
11	4-112996	GUIDA	GUIDE
12	4-112997	PIASTRINA DI COLLEGAMENTO	CONNECTING PLATE
13	354028	STAFFA FILETTO DX	RIGHT THREAD BRACKET
14	2-01013	ANELLO ELASTICO D.9	SEEGER D.9
15	2-02679	VTBEI ZI M6X12	HEXAGON SOCKET BUTTON HEAD SCREW
16	309358	RONDELLA D.8X16,5X0,5	WASHER D.8X16,5X0,5
17	2-02193	SPINA CILINDRICA D.3X22	CYLINDRICAL PLUG D.3X22
18	2-00957	SPINA CILINDRICA D.2,5X12	CYLINDRICAL PLUG D.2,5X12
19	2-02740	VSTEI P.CN. BR M8X16	CSK SCREW HEXAGON HEAD M8X16
20	2-91680	DADO ES.B. ZI M8	LOWER HEXAGONAL NUT M8
21	2-02671	VTE 8.8 BR M6X14	HEXAGONAL HEAD SCREW M6X14
22	309139	RONDELLA D.6,25X16X2	WASHER D.6,25X16X2
23	2-00021	ANELLO EL. D.8	SEEGER D.8

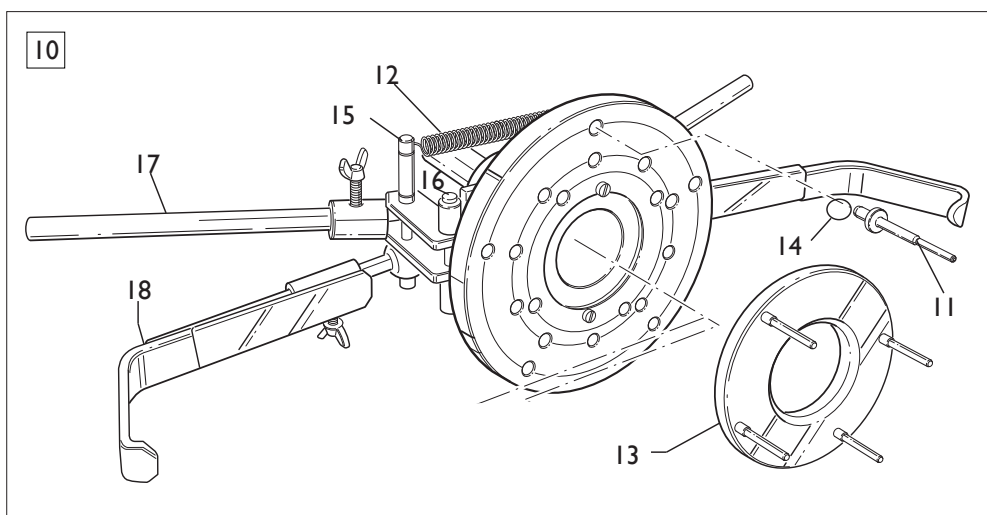
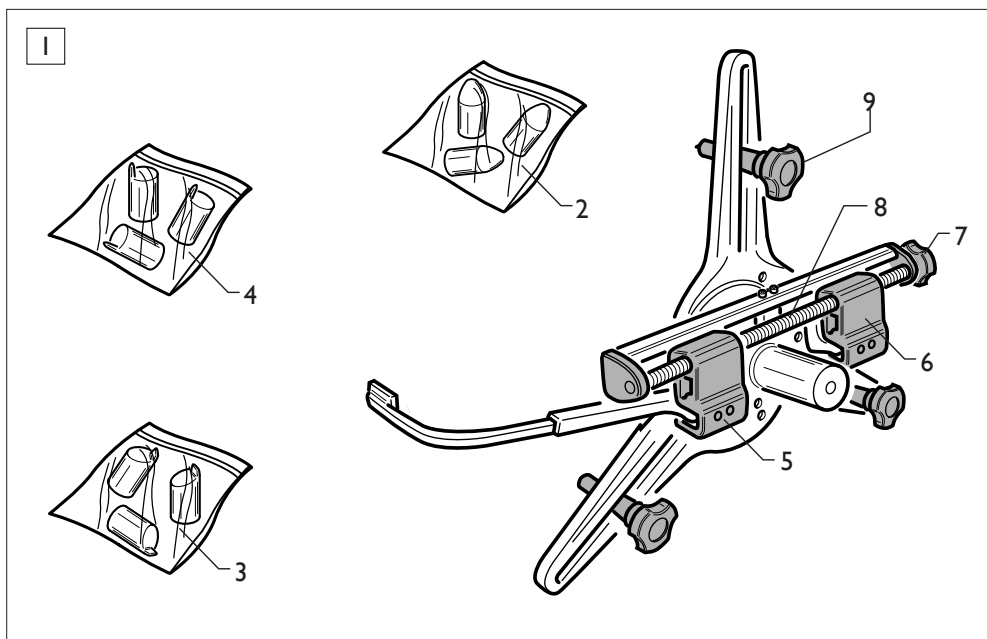
# STAFFA VETTURA 10-26” CAR BRACKET 10-26”



[TORNA AL COMPLESSIVO](#)  
[RETURNS TO OVERALL](#)

Rif. Ref.	Codice Code	Descrizione	Description
1	8-33100035	STAFFA AUTOCENTRANTE VETTURA 10-26"	COACH CHUCK BRACKET 10-26"
2	5-101106	PUNTALE DOPPIO CON OR	DOUBLE FERRURE WITH O-RING
3	337837	ATTACCO BARRA FILETTATA M8	M8 THREADED BAR ATTACK
4	337846	VITE OTTONE ZIGRINATA	KNURLED BRASS SCREW
5	354031	GUIDA	GUIDE
6	362564	BLOCCHETTO LAVORATO	MACHINED BLOCK
7	362565	PERNO	PIN
8	4-103101	PIASTRINA DI COLLEGAMENTO	CONNECTING PLATE
9	4-103103	VITE CON FILETTO DX	RIGHT-HAND THREAD BAR
10	4-103104	VITE CON FILETTO SX	LEFT-HAND THREAD BAR
11	4-103102	MANOPOLA DINAMOMETRICA	TORQUE KNOB
12	5-100954	STAFFA FILETTO DX	RIGHT THREAD BRACKET
13	5-100955	STAFFA FILETTO SX	LEFT THREAD BRACKET
14	4-103225	GUARNIZIONE OR D.7,6X2,4	O-RING D.7,6X2,4
15	421227	VITE CON SFERA M8X16	BALL SCREW M8X16
16	354032	INNESTO AUTOCENTRANTE	SPINDLE MOUNT
17	2-91680	DADO ES.B. ZI M8	LOWER HEXAGONAL NUT M8
18	2-02761	VITE 8.8 BR M6X14	HEXAGONAL HEAD SCREW M6X14
19	2-02183	VITE 8.8 ZI M5X10	HEXAGONAL HEAD SCREW M5X10
20	2-02182	VITE B. 8.8 ZI M5X6	CYLIN. HEAD SCREW HEX. SOCKET M5X6
21	2-02193	SPINA CILINDRICA D3X22	CYLINDRICAL PLUG D.3X22
22	309139	RONDELLA D.6,25X16X2	WASHER D.6,25X16X2
23	4-103112	TAPPO ROSSO	RED CAP
24	4-103113	TAPPO NERO	BLACK CAP

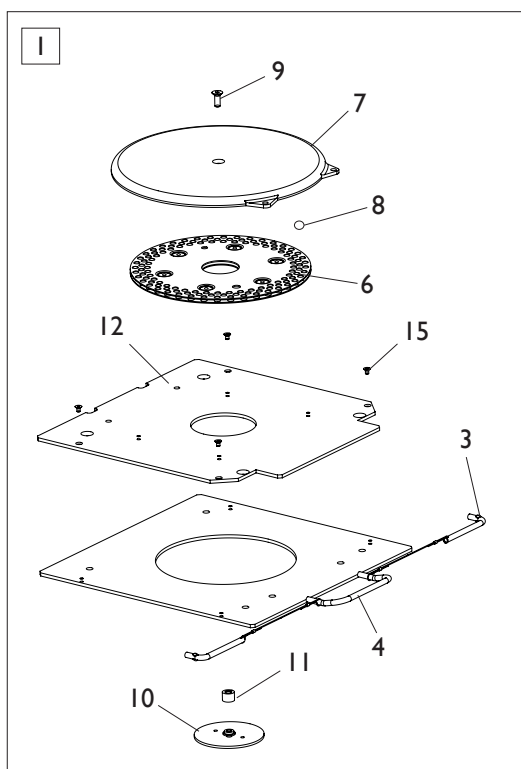
# STAFFE VETTURA RAPIDE FAST CAR BRACKETS



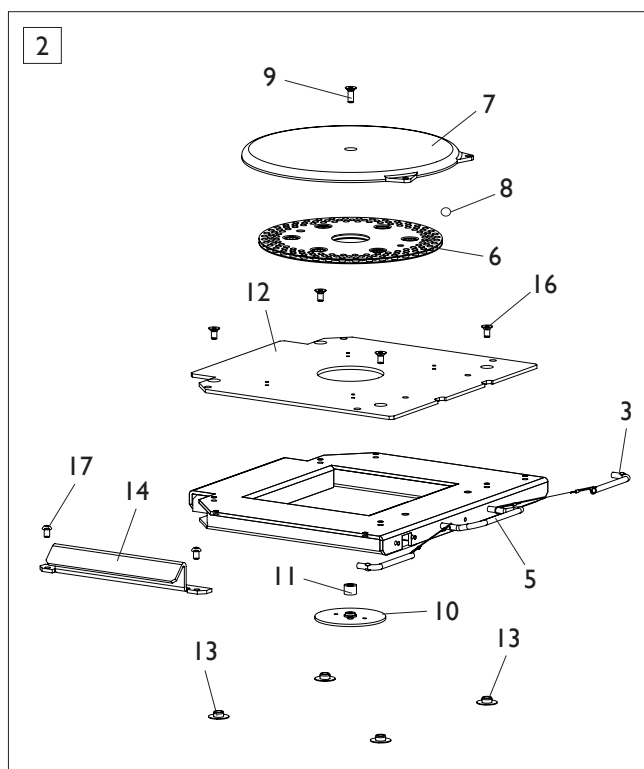
[TORNA AL COMPLESSIVO](#)  
[RETURNS TO OVERALL](#)

Rif. Ref.	Codice Code	Descrizione	Description
1	8-33100025	STAFFA RAPIDA 9-21"	FAST BRACKET 9-21"
2	2001761	KIT PROT. CERCHI STANDARD 9-21" (3 PZ)	STANDARD RIMS PROTECTION KIT (3 PZ)
3	2000436	KIT PROTEZIONI CERCHI BR. LUNGO (3 PZ)	LONG ARM RIMS PROTECTION KIT (3 PZ)
4	2001655	KIT PROTEZIONI PLASTICA CORTA (3 PZ)	KIT PLASTIC SHORT PROTECTION (3 PZ)
5	3001571	SLITTA SX	SLIDE LEFT
6	3001573	SLITTA DX	SLIDE RIGHT
7	3000801	MANOPOLA	KNOB
8	3002004	MOZZO FILETTATTO	HUB NUT
9	3002075	MANOPOLA	KNOB
10	8-33100041	STAFFA BMW-MERCEDES	BMW-MERCEDES BRACKET
11	4-103945	SPINOTTO BMW-MERCEDES	PIN MERCEDES-BMW
12	410628	MOLLA D.2X14X105	SPRING D.2X14X105
13	237379	FLANGIA CON PUNTALI	FLANGE TIPS
14	428489	GUARNIZIONE OR D.6,75X1,78	O-RING D.6,75X1,78
15	337359	PERNO MOLLA	SPRING PIN
16	337360	PERNO CERNIERA	HINGE PIN
17	337362	IMPUGNATURA	HANDLE
18	244099	BRACCIO DI BLOCCAGGIO	ARM LOCKING

# PIATTO ROTANTE BASSO-MEDIO-ALTO ROTATING PLATFORM LOW-MEDIUM-HIGH



**VERSIONE BASSO-MEDIO  
LOW-MEDIUM VERSION**

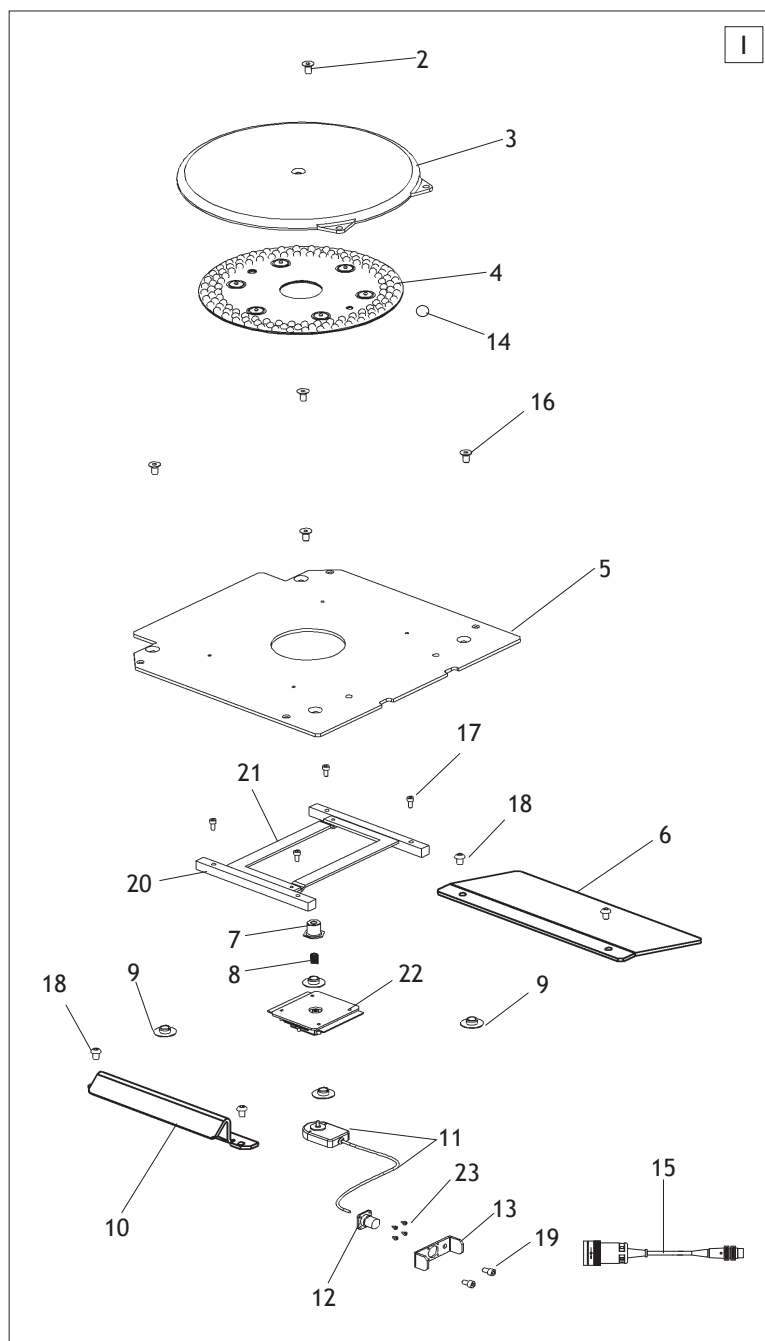


**VERSIONE ALTO-ALTO H.50  
HIGH-HIGH H.50 VERSION**

[TORNA AL COMPLESSIVO](#)  
[RETURNS TO OVERALL](#)

Rif. Ref.	Codice Code	Descrizione	Description
1	803229274	PIATTO ROTANTE <b>BASSO</b>	ROTATING PLATFORM <b>LOW</b>
1	801227745	PIATTO ROTANTE <b>MEDIO</b>	ROTATING PLATFORM <b>MEDIUM</b>
2	804241069	PIATTO ROTANTE <b>ALTO</b>	ROTATING PLATFORM <b>HIGH</b>
2	5-105579	PIATTO ROTANTE <b>ALTO H.50</b>	ROTATING PLATFORM <b>HIGH H.50</b>
3	328699	FERMO PEDANA	STATIONARY PLATFORM
4	247323	BASAMENTO	BASE
5	247379	BASAMENTO <b>ALTO</b>	<b>HIGH</b> BASE
5	4-109611	BASAMENTO <b>ALTO H.50</b>	<b>HIGH H.50</b> BASE
6	250049	GABBIA CON SFERE	CAGE WITH SPHERE
7	347324	COPERCHIO	COVER
8	2-00758	SFERA 3/8	SPHERE 3/8
9	2-02129	VTSPEI 8.8 ZI M8X22	HEX.SOCKET HEAD SCREW
10	345467	RISCONTRO PER DISCO GIREVOLE	ABUTMENT FOR ROTATING DISK
11	347827	DISTANZIALE PER RISCONTRO	SPACER FOR ABUTMENT
12	347325	BASAMENTO	BASE
13	450101	TAPPO TONDO CAVA ES. D.30X14,5	ROUND CAP D.30X14,5
14	351942	FERMO RUOTA	WHEEL RETAINER
15	2-00902	VTSPEI M5X8	SCREW M5X8
16	2-02046	VTSPEI M8X16	SCREW M8X16
17	2-02148	VTBEI M8X12	SCREW M8X12

## PIATTO ROTANTE CON ENCODER ROTATING PLATFORM WITH ENCODER

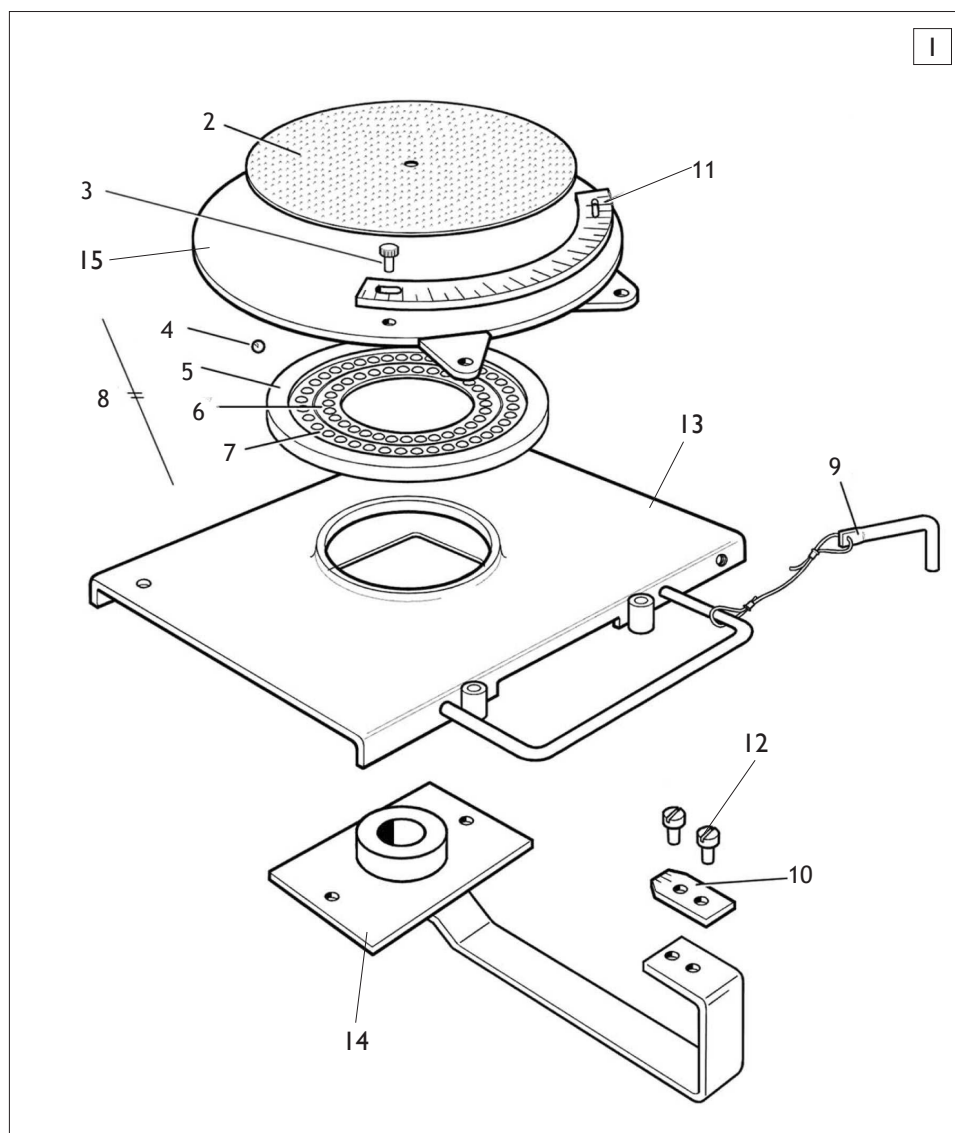


[TORNA AL COMPLESSIVO](#)  
[RETURNS TO OVERALL](#)



Rif. Ref.	Codice Code	Descrizione	Description
1	248593	PIATTO ROTANTE CON ENCODER	ROTATING PLATFORM WITH ENCODER
2	2-01989	VTCEI 8.8 ZI M6X10	CYLIN. HEAD SCREW HEX.SOCKET M6X10
3	347324	COPERCHIO	COVER
4	250049	GABBIA CON SFERE	CAGE WITH SPHERE
5	347325	BASAMENTO	BASE
6	348601	RAMPA	RAMP
7	348540	SUPPORTO DISTANZIALE	SPACER SUPPORT
8	417507	MOLLA D.10X22X0,8	SPRING D.10X22X0,8
9	450101	TAPPO TONDO CAVA ES. D.30X14,5	ROUND CAP D.30X14,5
10	351942	FERMO RUOTA SU PIATTO ROTANTE	WHEEL RETAINER ON ROTATING PLATE
11	249523	ENCODER CON CONNETTORE	ENCODER WITH CONNECTOR
12	427829	CONNETTORE FEMMINA	FEMALE CONNECTOR
13	349811	PROTEZIONE CONNETTORE	CONNECTOR PROTECTION
14	2-00758	SFERA 3/8	SPHERE 3/8
15	4-200721	CAVO PROLUNGA CONNEY/DIN	CONNEY/DIN EXTENTION CABLE
16	2-02046	VTSPEI M8X16	SCREW M8X16
17	2-00853	VTCEI M5X12	HEX. SOCKET HEAD SCREW M5X12
18	2-02148	VTBEI M8X12	SCREW M8X12
19	2-00995	VTCEI M5X8	HEX. SOCKET HEAD SCREW M5X8
20	348543	GUIDA	GUIDE
21	348544	GIUDA "L"	GUIDE "L"
22	348537	SUPPORTO ENCODER	ENCODER SUPPORT
23	2-00640	VATBIC D.2,9X6,5	SCREW D.2,9X6,5

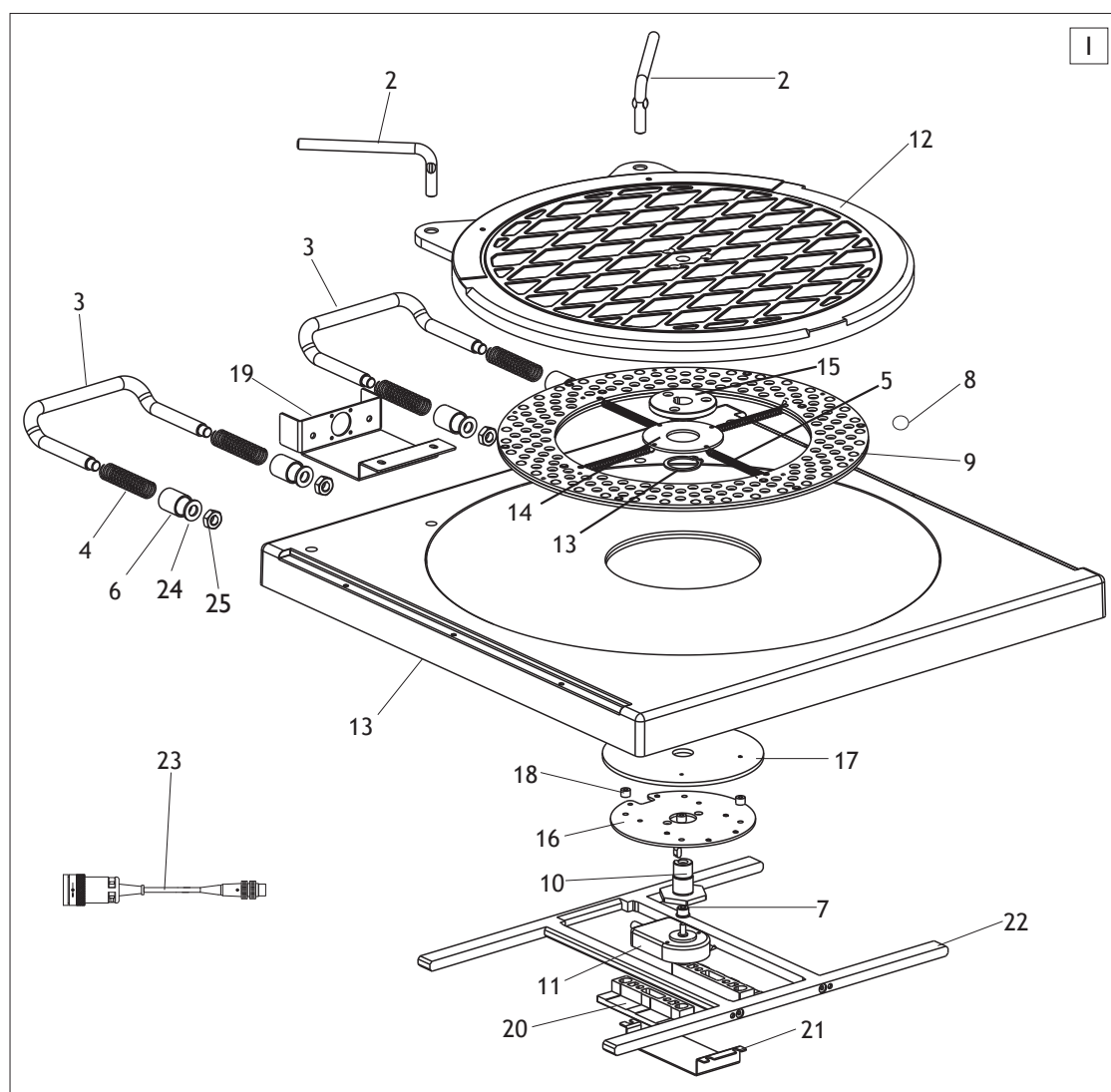
## PIATTO ROTANTE H.50 ROTATING PLATFORM H.50



[TORNA AL COMPLESSIVO](#)  
[RETURNS TO OVERALL](#)

Rif. Ref.	Codice Code	Descrizione	Description
1	268864	PIATTO ROT. SING. H.50 SCALA GRADUATA	ROTATING PLATFORM SINGLE H.50
2	5994	DISCO ABRASIVO D.250 ADESIVO CH24	ABRASIVE DISC D.250
3	5746	MANOPOLA ZIGRINATA ZINCATA	ZINC-PLATED KNURLED KNOB
4	228010700	SFERA IN NYLON 6,6-DIAMETRO 5/16"	NYLON SPHERE DIAMETER 6.6 5/16"
5	5379	ANELLO	RING
6	5495	GUIDA SFERE INTERNA	INTERNAL GUIDE SPHERE
7	5494	GUIDA SFERE ESTERNA	EXTERNAL GUIDE SPHERE
8	30091	GUIDA SFERE COMPLETA	COMPLETE GUIDE SPHERE
9	5378	PERNI DI FERMO	RETAINER PINS
10	5870	INDICE	INDEX
11	551	SETTORE GRADUATO PER PIATTO	GRADUATED SCALE FOR PLATFORM
12	2-00651	VTCIC M3X5	SCREW M3X5
13	268865	BASE	BASE
14	287788	PIASTRA CON INDICE	PLATE
15	287792	PIASTRA ROTANTE	ROTATING PLATE

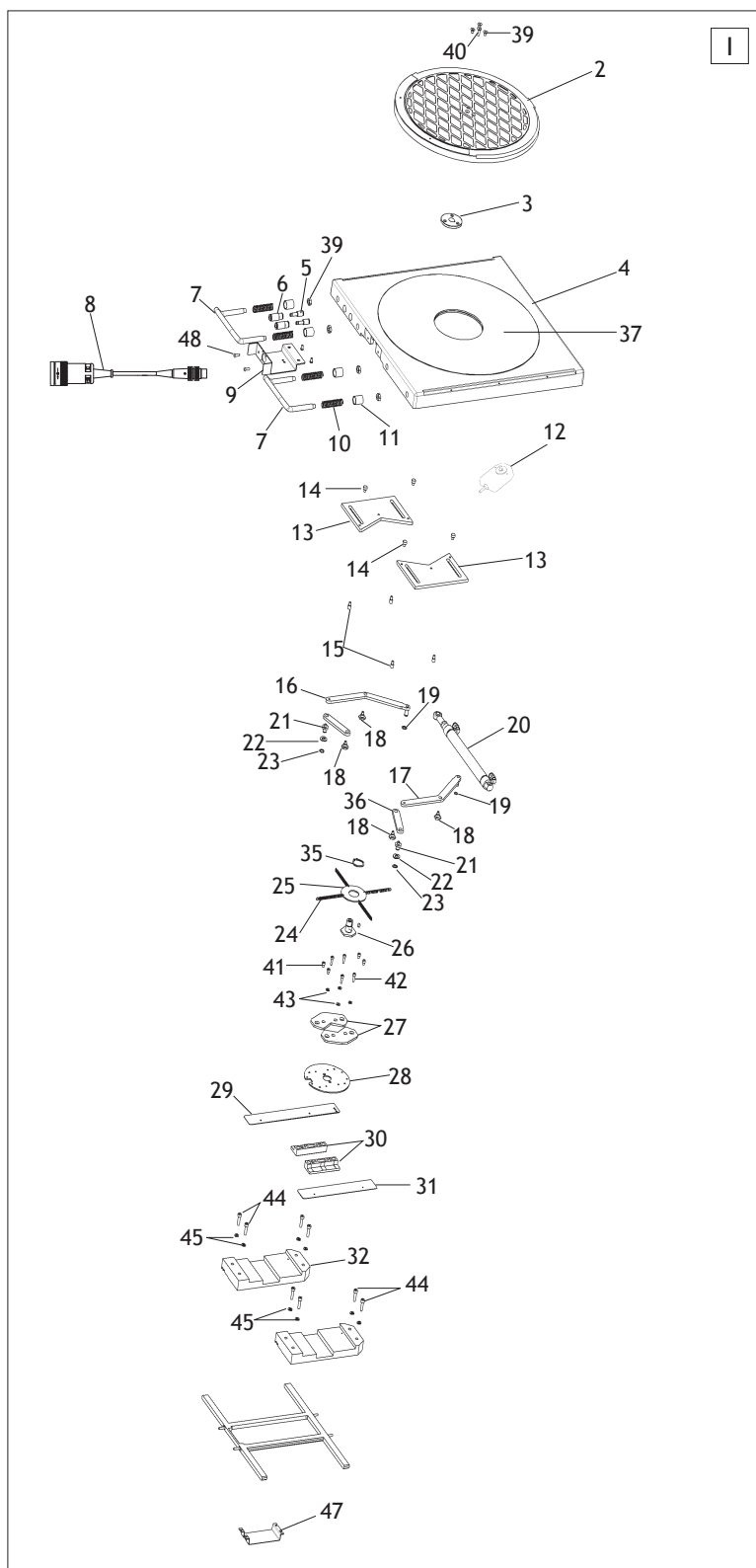
# PIATTO ROTANTE PRO ELETTRONICO PRO ELECTRONIC ROTATING PLATFORM



[TORNA AL COMPLESSIVO](#)  
[RETURNS TO OVERALL](#)

Rif. Ref.	Codice Code	Descrizione	Description
1	261976	PIATTO ROTANTE PRO ELETTRONICO	ELECTRONIC ROTATING PLATFOPRM
2	261928	FERMO CON CORDELLA	FIRM WITH STRAP
3	4-100992	MANIGLIA	HANDLE
4	4-100991	MOLLA D.13,2X56X1,2	SPRING D.13,2X56X1,2
5	4-101736	MOLLA D.0,5X5X25	SPRING D.0,5X5X25
6	4-100990	TUBO DI PROTEZIONE	PROTECTIVE TUBE
7	417507	MOLLA D.10X22X0,8	SPRING D.10X22X0,8
8	2-00243	SFERA 5/16"	SPHERE 5/16"
9	261973	DISCO PIATTO ROTANTE CON SFERE	CAGE WITH SPHERE
10	4-100871	SUPPORTO DISTANZIALE	SPACER SUPPORT
11	5-100541	ENCODER CON CAVO SPIRALATO	ENCODER WITH SPIRAL CABLE
12	5-100305	DISCO SUP. CON DISCO DI RINFORZO	UPPER DISC
13	2-71593	ANELLO D.24	SEEGER D.24
14	4-100875	DISCO PORTA MOLLE	DISK SPRING HOLDER
15	4-100870	DISPOSITIVO DI BLOCCAGGIO	LOCKING DEVICE
16	4-100872	SUPPORTO ENCODER CIRCOLARE	ENCODER SUPPORT CIRCULAR
17	4-100874	DISCO DI CONTRASTO	CONTRAST DISK
18	4-100873	DIST.CIL.NON FILETTATO PLAST. 3,5X7,0 L.5	NON-THREADED CYLIN. SPACER 3,5X7,0 L.5
19	361962	SUPPORTO	SUPPORT
20	4-100878	BLOCCHETTO	BLOCK
21	4-100877	PIASTRA PROTEZIONE ENCODER	PLATE PROTECTION ENCODER
22	261970	GRUPPO GUIDE	GROUP GUIDE
23	4-200721	CAVO PROLUNGA CONNEY/DIN	CONNEY/DIN EXTENTION CABLE
24	2-00212	RONDELLA D.8	WASHER D.8
25	2-91680	DADO ES. M8	HEXAGON NUT M8

# PIATTO ROTANTE AUTOBLOCCANTE SELF-CENTERING ROTATING PLATFORM



[TORNA AL COMPLESSIVO](#)  
[RETURNS TO OVERALL](#)

Rif. Ref.	Codice Code	Descrizione	Description
1	5-100395	PIATTO ROT.PRO ELETTR.AUTOBLOCC.	PLATFORM PRO ELECTRONIC LOCKING
2	5-100413	PIATTO SUP. CON DISCO DI RINFORZO	TOP PLATE WITH SUPPORT DISC
3	4-100870	DISPOSITIVO DI BLOCCAGGIO	LOCKING DEVICE
4	5-100394	PIATTO BASSO CON DISCO DI RINFORZO	PLATE BOTTOM WITH SUPPORT DISC
5	3-00210	RACCPN-D-C6-T4	FITTING-D-C6-T4
6	3-00017	RACCPN-PASSAPARETE M14X1-T6	BULKHEAD FITTING M14X1-T6
7	4-100992	MANIGLIA	HANDLE
8	4-200721	CAVO PROLUNGA CONNEY/DIN	CONNEY/DIN EXTENTION CABLE
9	361962	SUPPORTO	SUPPORT
10	4-100991	MOLLA D.13,2X56X1,2	SPRING D.13,2X56X1,2
11	4-100990	TUBO DI PROTEZIONE	PROTECTIVE TUBE
12	5-100541	ENCODER CON CAVO SPIRALATO	ENCODER WITH SPIRAL CABLE
13	4-101182	PIASTRA DI BLOCCAGGIO	LOCK PLATE
14	4-101176	PERNO SOSTEGNO PIASTRA	PIN SUPPORT PLATE
15	4-101180	PERNO D.7X14	PIN D.7X14
16	5-100539	BIELLA DX	PISTON ROD DX
17	5-100540	BIELLA SX	PISTON ROD SX
18	4-101179	PERNO ESAGONALE CH 14	HEXAGONAL PIN CH 14
19	2-00020	ANELLO EL. D.6	SEEGER D.6
20	5-100393	CILINDRO PNEUMATICO	PNEUMATIC CYLINDER
21	4-101181	PERNO ESAGONALE CH13	HEXAGONAL PIN CH 13
22	2-00212	RONDELLA D.8	WASHER D.8
23	2-00021	ANELLO EL. D.8	SEEGER D.8
24	4-101736	MOLLA D.0,5X5X25	SPRING D.0,5X5X25
25	4-100875	DISCO PORTA MOLLE	DISK SPRING HOLDER
26	4-100871	SUPPORTO DISTANZIALE	SPACER SUPPORT
27	4-101174	LEVA BLOCCAGGIO PERNO CIRCOLARE	LEVER LOCKING PIN CIRCULAR
28	4-100872	SUPPORTO ENCODER CIRCOLARE	ENCODER SUPPORT CIRCULAR
29	4-101800	LAMIERA DI PROTEZIONE DX	PROTECTIVE PLATE RIGHT
30	4-100878	BLOCCHETTO	BLOCK
31	4-101801	LAMIERA DI PROTEZIONE SX	PROTECTIVE PLATE LEFT
32	4-101187	GUIDA DI SCORRIMENTO DX/SX	RUNNER RIGHT/LEFT
33	261970	GRUPPO GUIDE	GROUP GUIDE
34	4-100877	PIASTRA PROTEZIONE ENCODER	PLATE PROTECTION ENCODER
35	2-71593	ANELLO D.24	SEEGER D.24
36	4-101178	BIELLA	PISTON ROD
37	261973	DISCO PIATTO ROTANTE CON SFERE	CAGE WITH SPHERE
38	2-00902	VTSPei M5X8	SCREW M5X8
39	2-91680	DADO ES. M8	HEXAGON NUT M8
40	2-00692	VTSPei M5X16	SCREW M5X16
41	2-02819	VTCEI M4X6	HEX. SOCKET HEAD SCREW M4X6
42	2-00757	VTCEI M4X14	HEX. SOCKET HEAD SCREW M4X14
43	2-00209	RONDELLA D.4	WASHER D.4
44	2-03003	VTCEI M5X20	HEX. SOCKET HEAD SCREW M5X20
45	2-00210	RONDELLA D.5	WASHER D.5
46	261970	GRUPPO GUIDE	GUIDE
47	4-100877	PIASTRA PROT. ENCODER	ENCODER PLATE
48	2-02676	VTBEI M4X8	SCREW M4X8

Code 4-116474C



Il disegno è realizzato con tutti i particolari ma solo quelli codificati sono forniti come ricambi. L'Azienda si riserva la facoltà di apportare modifiche senza preavviso.

Production date : 01 / 2020

The drawing shows all parts but only the coded parts are supplied as spares. The Company reserves the right to make modifications without prior notice.