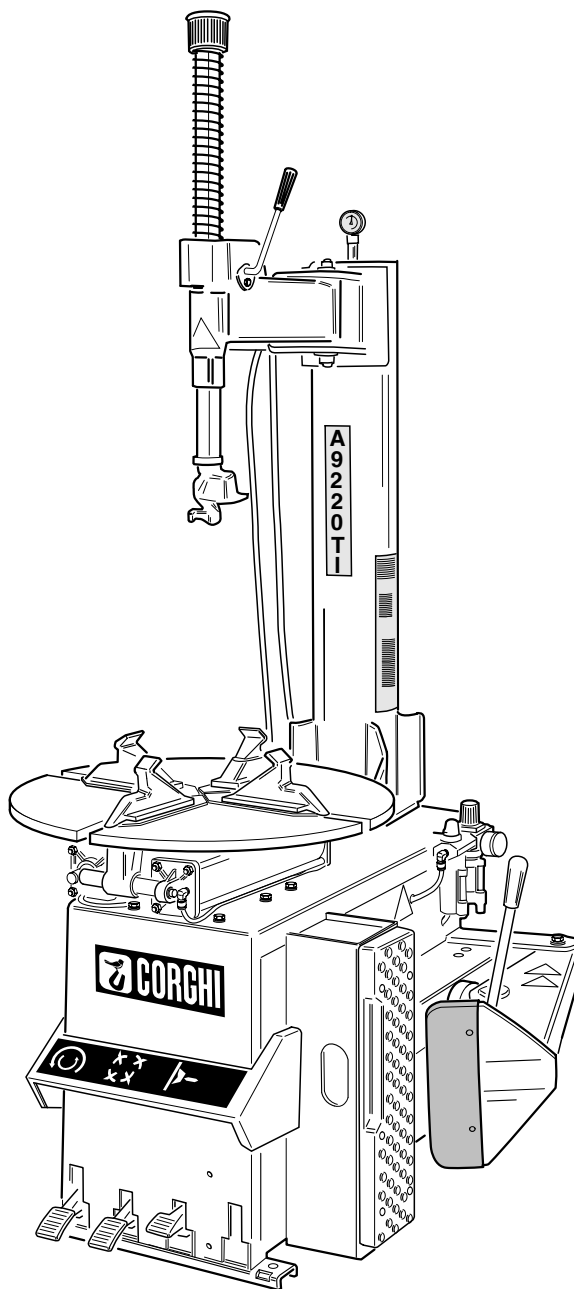


Questo libretto non autorizza l'utente ad intervenire sulle macchine ad esclusione di quanto esplicitamente descritto nel Manuale d'uso, ma consente all'utente di fornire informazioni precise all'Assistenza tecnica, al fine di ridurre i tempi di intervento.

# A9220 TI

The "Spare parts" booklet does not authorize the user to carry out work on the machine unless expressly specified in the instruction manual, but does enable him to provide accurate information to the assistance service in order to reduce downtime.

## PEZZI DI RICAMBIO SPARE PARTS LIST ERSATZTEILLISTE PIECES DE RECHANGE



Code

**4-100548C**

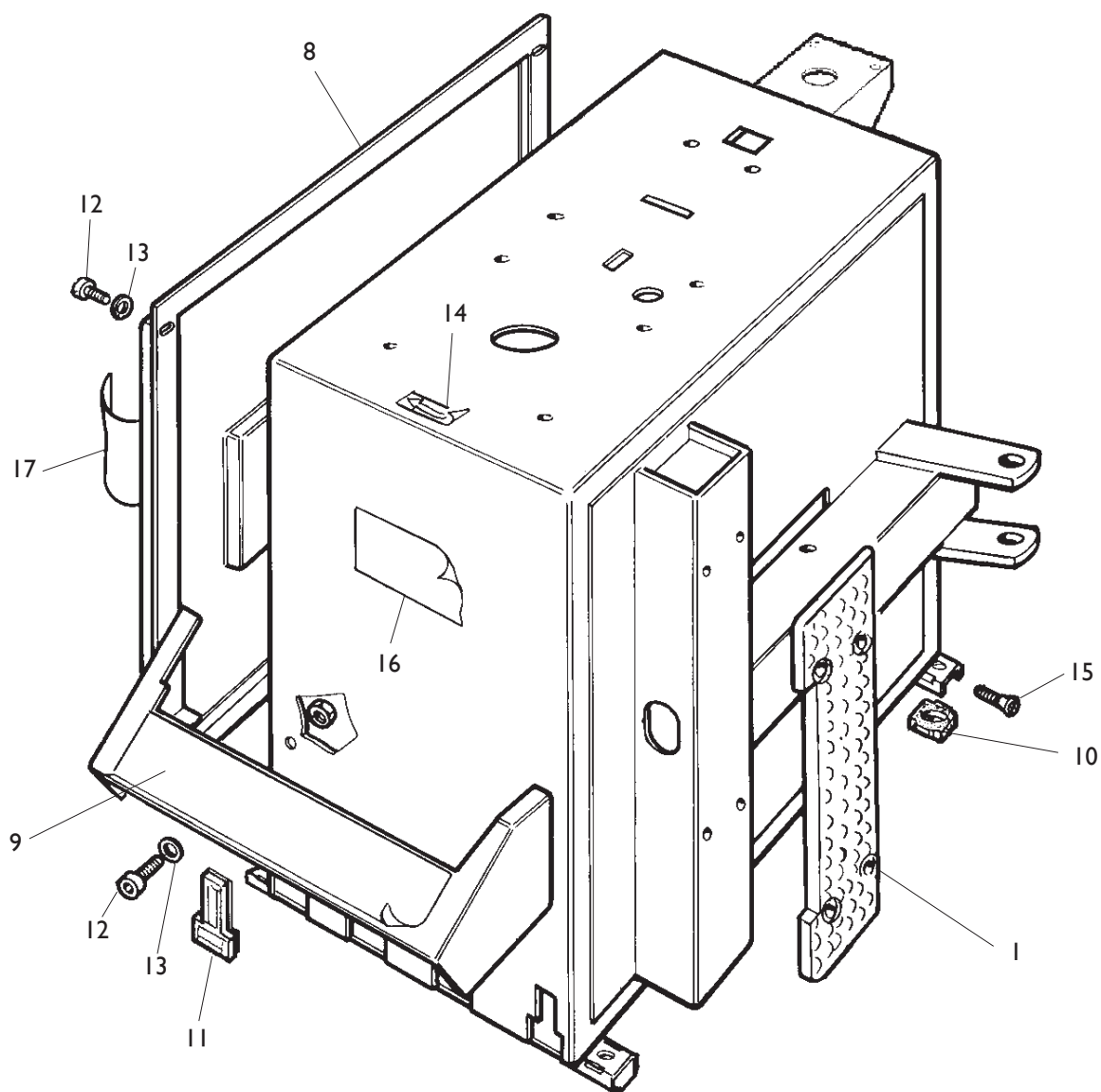
Production from

**04 / 12**

Der Katalog Ersatzteile stellt keine Genehmigung zu eigenmächtigen Eingriffen dar (mit Ausnahme jener im Handbuch beschriebenen), sondern er soll den Anwender in die Lage versetzen, dem technischen Service präzise Informationen zu liefern, um die Reparaturzeiten zu verkürzen.

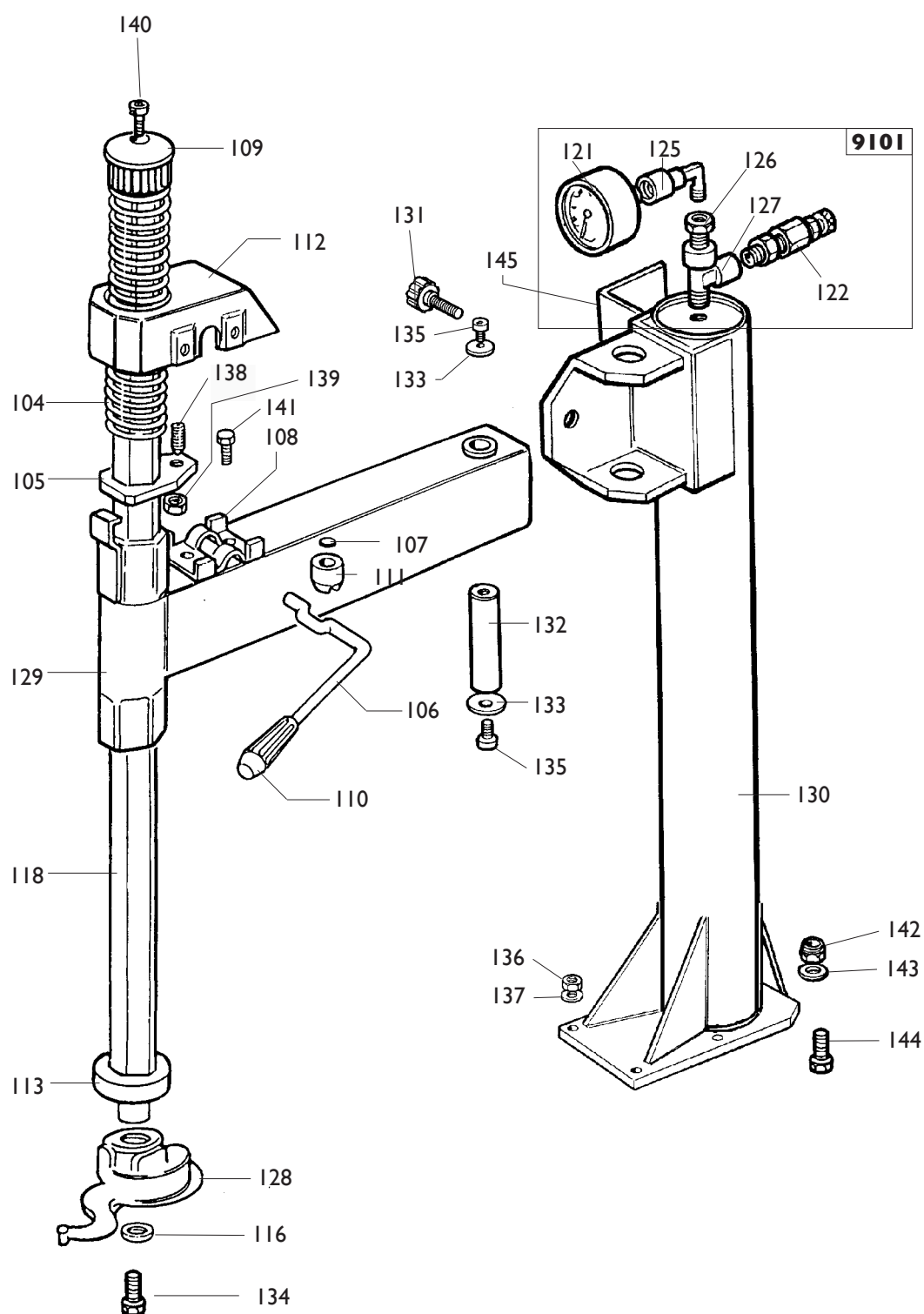



Le livret "Pièces de rechange", n'autorise pas l'utilisateur à intervenir sur les machines, sauf pour tout ce qui est clairement décrit dans le manuel d'utilisation, mais lui permet de fournir des informations précises à l'assistance technique, afin de diminuer les délais d'intervention.



	<b>A 9220 T.I.</b>	<b>Fig. A</b>	<b>03A / 03</b>	<b>Cassone</b>
--	--------------------	---------------	-----------------	----------------

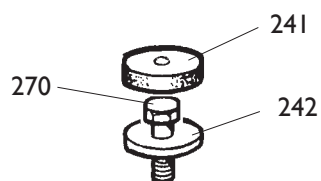
0001	436199	APPOGGIO	RIM SUPPORT	STUETZE	APPUI
0008	341176	COFANO	HOOD	HAUBE	COFFRE
0009	429976	PROTEZIONE	SHIELD	ABDECKUNG	PROTECTION
0010	422019	PIEDE	FOOT	FUSS	PIED
0011	429006	TAPPO	PLUG		
0012	2-00310	VITE M6X20	SCREW		
0013	2-00211	RONDELLA D.6	WASHER		
0014	418135	AD.ROTAZIONE	LABEL		
0015	2-01885	VITE M6X25	SCREW		
0016	460384	TARGHETTA	LABEL		
0017	461236	TARGHETTA	LABEL		



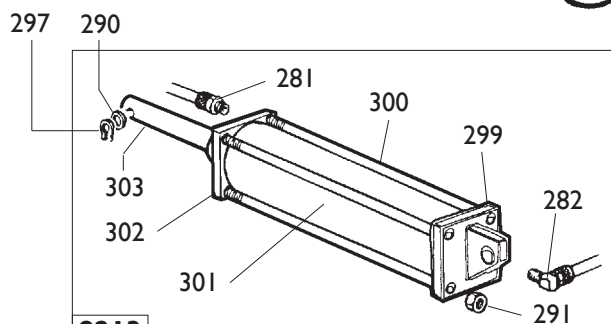
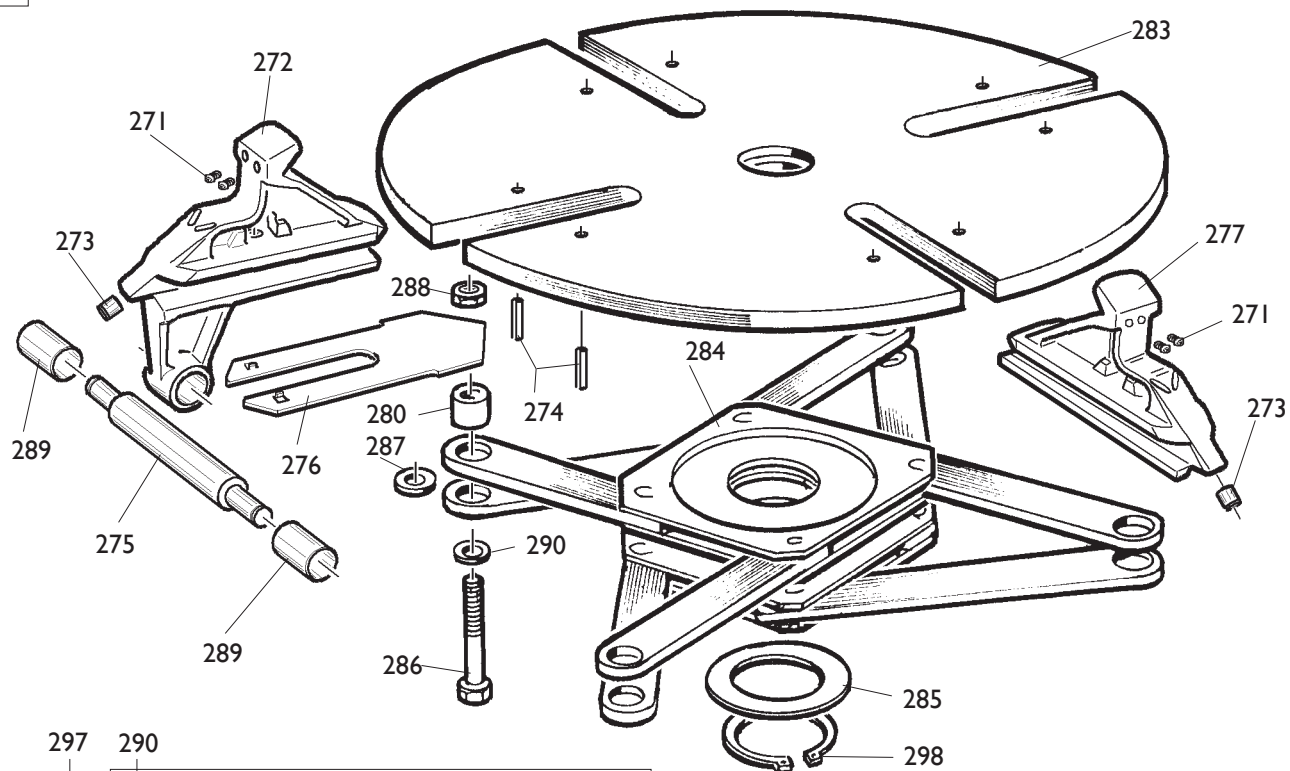
	<b>A 9220 T.I.</b>	<b>Fig. B</b>	<b>03B/ 03</b>	<b>Palo + braccio operante</b>
--	--------------------	---------------	----------------	--------------------------------

0104	423765	MOLLA	SPRING	FEDER	RESSORT
0105	340278	PIATTO	PLATE	TELLER	PLAT
0106	440279	LEVA	LEVER	HEBEL	LEVIER
0107	440280	PIASTRINA	PLATE	PLAETTCHEN	PLAQUETTE
0108	440281	PIASTRINA	PLATE	PLAETTCHEN	PLAQUETTE
0109	423907	POMOLO	KNOB	BALLENGRIFF	POMMEAU
0110	417351	MANOPOLA	KNOB	BALLENGRIFF	BOUTON
0111	440284	NOTTOLINO	PAWL	KLINKE	CLIQUET
0112	440285	CARTER	CASING	GEHAUSE	CARTER
0113	428681	ANELLO	RING	RING	ANNEAU
0116	350194	RONDELLA	WASHER	UNTERLEGSCHIEBE	RONDELLE
0118	343105	BRACCIO	ARM	ARM	BRAS
0128	258458	TORRETTA	M/D HEAD	DREHKOPF	TOURELLE
0129	261228	BRACCIO	ARM	ARM	BRAS
0130	5-101130	PALO	SHAFT	MAST	POTEAU
0131	441580	MANOPOLA	KNOB	BALLENGRIFF	BOUTON
0132	323881	PERNO	PIN	ZAPFEN	PIVOT
0133	318216	RONDELLA	WASHER	UNTERLEGSCHIEBE	RONDELLE
0134	350197	VITE	SCREW		
0135	2-01225	VITE M12X25	SCREW		
0136	2-01275	DADO M10	NUT		
0137	441631	RONDELLA	WASHER		
0138	2-71370	VITE M12X30	SCREW		
0139	2-00153	DADO M12	NUT		
0140	2-00373	VITE M8X20	SCREW		
0141	2-01267	VITE M8X12	SCREW		
0142	2-01019	DADO M10	NUT		
0143	2-00213	RONDELLA M10	WASHER		
0144	2-00381	VITE M8X35	SCREW		
0145	338808	SUPPORTO	SUPPORT		

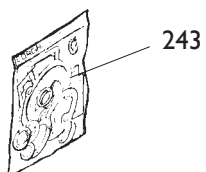
9101	241608	GRUPPO	ASSEMBLY	GRUPPE	GROUPE
0121	3-00488	MANOMETRO	PRESSURE GAUGE	DRUCKMESSER	MANOMETRE
0122	3-00356	VALVOLA	VALVE	VENTIL	VANNE
0125	3-00138	RACCORDO	CONNECTOR	ANSCHLUSS	RACCORD
0126	3-00271	NIPPLO	CONNECTION	NIPPEL	NIPPLE
0127	3-00131	RACCORDO	CONNECTOR	ANSCHLUSS	RACCORD



9212



9213



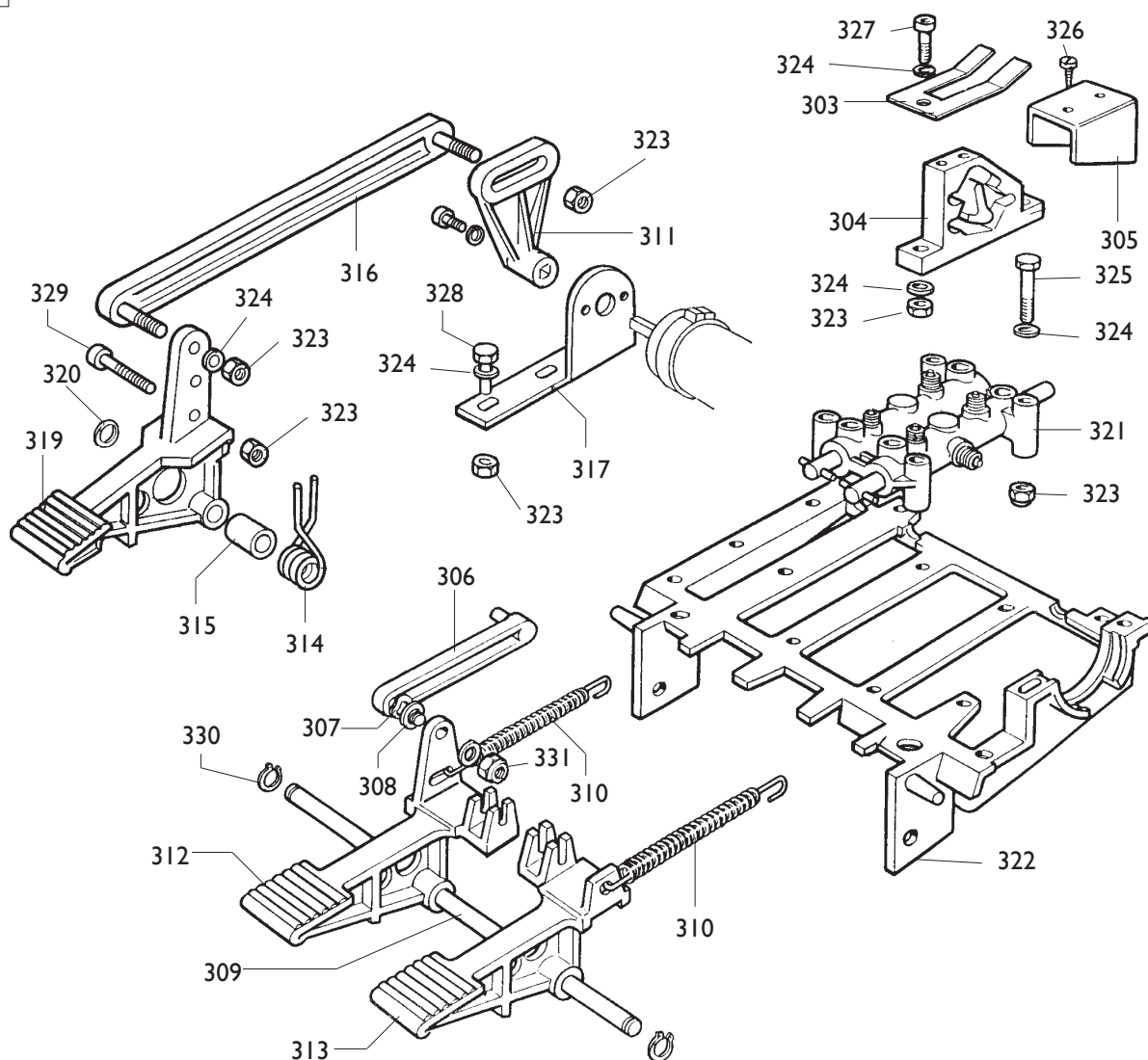
	<b>A 9220 T.I.</b>	<b>Fig. C</b>	<b>04 / 12</b>	<b>Autocentrante 20" T.I.</b>
--	--------------------	---------------	----------------	-------------------------------

0242	323363	RONDELLA	WASHER	UNTERLEGSCHEIBE	RONDELLE
0241	426514	TAPPO	PLUG	STOPFEN	BOUCHON
0243	238548	KIT GUARNIZIONI	SEALS KIT	DICHTUNGSATZ	KIT JOINTS
0270	2-01016	VITE	SCREW	SCHRAUBE	VIS

9212	253801	AUTOCENTRANTE T.I.	TURNTABLE T.I.	SPANNFUTTER T.I.	PLATEAU AUT.TI
0271	339146	PUNTE DI BLOCC.	LOCKING PEAK	FESTKLEMMENSPIITZE	POINTE DE BLOCAG
0272	253813	APPOGGIO T.I.TRAINANTE	RIM SUPPORT T.I.	STUETZE T.I.	APPUI T.I.
0273	441100	RACCORDO	CONNECTOR	ANSCHLUSS	RACCORD
0274	2-01059	SPINA	PLUG	STECKER	FICHE
0275	353804	PERNO	PIN	ZAPFEN	PIVOT
0276	354638	COPRIASOLA	COVER	LOCHSTOPFEN	BOUCHON
0277	253812	APPOGGIO T.I.TRAINATO	RIM SUPPORT T.I.	STUETZE T.I.	APPUI T.I.
0280	353803	BOCCOLA	BUSHING	LAGER	DOUILLE
0283	253758	PIATTO	PLATE	TELLER	PLAT
0284	253776	FLANGIA	FLANGE	FLANSCH	FLASQUE
0285	455082	RONDELLA	WASHER	UNTERLEGSCHEIBE	RONDELLE
0286	2-02199	VITE	SCREW	SCHRAUBE	VIS
0287	437964	RONDELLA	WASHER	UNTERLEGSCHEIBE	RONDELLE
0288	2-02200	DADO	NUT	MUTTER	ECROU
0289	354308	TUBO	TUBE		
0290	2-00214	RONDELLA	WASHER		
0297	2-00025	SEEGER D.12	SEEGER		
0298	2-01283	SEEGER D.65	SEEGER		

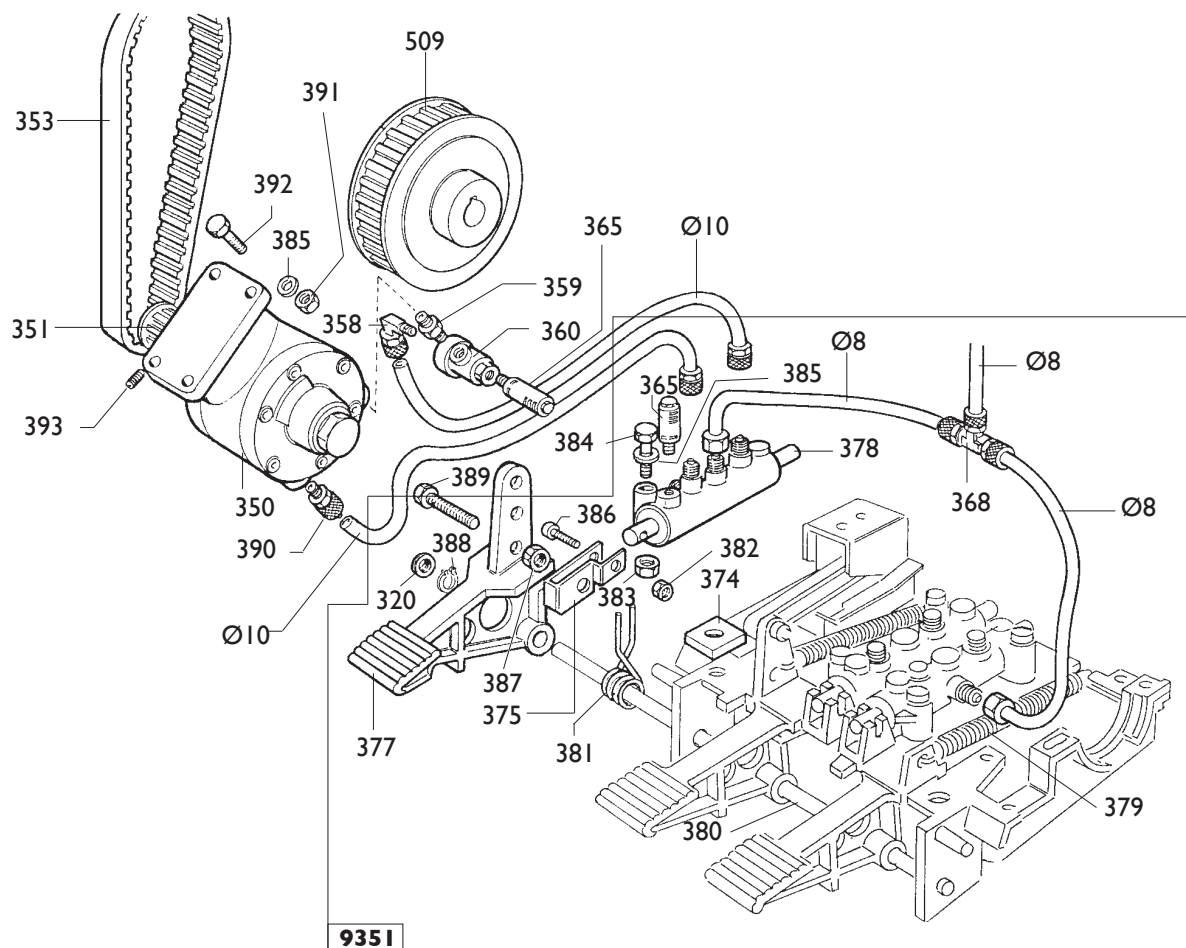
9213	253784	CILINDRO DESTRO	CYLINDER RIGHT	ZYLINDER	CYLINDRE
9213	253783	CILINDRO SINISTRO	CYLINDER LEFT	ZYLINDER	CYLINDRE
0281	3-02045	RACCORDO	CONNECTOR	ANSCHLUSS	RACCORD
0282	3-02044	RACCORDO	CONNECTOR	ANSCHLUSS	RACCORD
0291	2-01137	DADO M8	NUT		
<b>0299</b>	<b>4-115948</b>	<b>FLANGIA POST.</b>	<b>FLANGE</b>		
<b>0300</b>	<b>4-115949</b>	<b>TIRANTE</b>	<b>BOLT</b>		
<b>0301</b>	<b>4-115951</b>	<b>CAMICIA</b>	<b>LINER</b>		
<b>0302</b>	<b>5-105111</b>	<b>FLANGIA ANT.</b>	<b>FLANGE</b>		
<b>0303</b>	<b>4-115950</b>	<b>STELO</b>	<b>ROD</b>		

9301



9301	241201	PEDALIERA	CONTROL PEDAL	PEDALERIE	GR.PEDALES
0303	325019	BALESTRA	LEAF SPRING	BLATTFEDER	RESSORT A LAMES
0304	425020	CAMMA	CAM	NOCKEN	CAME
0305	325018	CAVALLOTTO	U-BOLT	BUEGELBOLZEN	CRAMPILLON
0306	425014	BIELLA	TRACE	PLEUELSTANGE	BIELLE
0307	2-02247	RONDELLA	WASHER	UNTERLEGSCHIEBE	RONDELLE
0308	309358	RONDELLA	WASHER	UNTERLEGSCHIEBE	RONDELLE
0309	325583	PERNO	PIN	ZAPPEN	PIVOT
0310	410628	MOLLA	SPRING	FEDER	RESSORT
0311	404283	LEVA	LEVER	HEBEL	LEVIER
0312	325031	PEDALE AUTOCENTR.	PEDAL	PEDAL	PEDALE
0313	325032	PEDALE STALL.	PEDAL	PEDAL	PEDALE
0314	4-109664	MOLLA	SPRING	FEDER	RESSORT
0315	325050	DISTANZIALE	SPACER	ABSTANDSSTUECK	ENTRETOISE
0316	429009	BIELLA	TRACE	PLEUELSTANGE	BIELLE
0317	334758	SUPPORTO	SUPPORT	LAGER	SUPPORT
0319	5-102714	PEDALE INVERT.	PEDAL	PEDAL	PEDALE
0320	452011	BOCCOLA	BUSHING	LAGER	DOUILLE
0321	5-102739	RUBINETTO	COCK	HAHN	ROBINET
0322	524273	SUPPORTO	SUPPORT		
0323	2-01979	DADO	NUT		
0324	2-00211	RONDELLA	WASHER		
0325	2-00411	VITE	SCREW		
0326	2-01272	VITE	SCREW		
0327	2-00312	VITE	SCREW		
0328	2-00362	VITE	SCREW		
0329	2-00366	VITE	SCREW		
0330	2-00025	VITE	SCREW		
0331	2-01137	DADO	NUT		





Ø8	1-01683
Ø10	1-01685
0350	319135
0351	319076
0353	3-00585
0358	3-00109
0359	3-00141
0360	3-00316
0509	319073
0390	3-00040
0391	422288
0392	2-00363
0393	2-00801

TUBO
TUBO
MOTORE
PULEGGIA
CINGHIA
RACCORDO
NIPPLO
VALVOLA
PULEGGIA
RACCORDO
DADO
VITE
VITE

PIPE
PIPE
MOTOR
PULLEY
BELT
CONNECTOR
CONNECTION
VALVE
PULLEY
CONNETION
NUT
SCREW
SCREW

ROHR
ROHR
MOTOR
RIEMENSCHIEBE
RIEMEN
ANSCHLUSS
NIPPEL
VENTIL
RIEMENSCHIEBE

TUYAU
TUYAU
MOTEUR
POULIE
COURROIE
RACCORD
NIPPLE
VANNE
POULIE

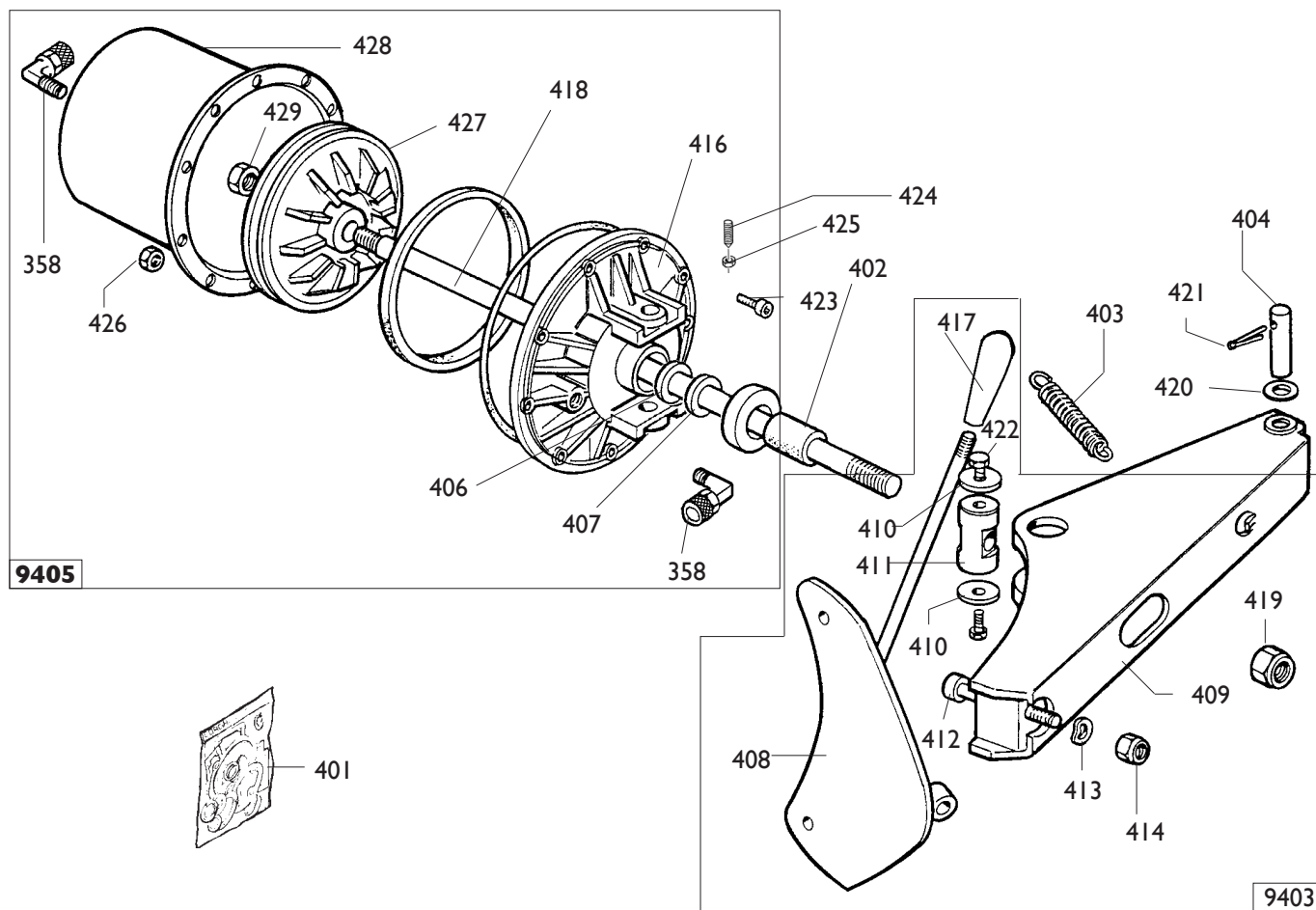
9351	270526
0320	452011
0365	3-00183
0368	3-00112
0374	329058
0375	331381
0377	252030
0378	5-102740
0379	410628
0380	325583
0381	4-109664
0382	2-01018
0383	2-01979
0384	2-00411
0385	2-00211
0386	2-00911
0387	2-01979
0388	2-00025
0389	2-00366

PEDALIERA
BOCCOLA
SILENZIATORE
RACCORDO
PIASTRINA
BIELLA
PEDALE
RUBINETTO
MOLLA
PERNO
MOLLA
DADO
DADO
VITE
RONDELLA
VITE
DADO
SEGER
VITE

CONTROL PEDAL
BUSHING
SILENCER
CONNECTOR
PLATE
TRACE
PEDAL
COCK
SPRING
PIN
SPRING
NUT
NUT
SCREW
WASHER
SCREW
NUT
SEGER
SCREW

PEDALERIE
LAGER
SCHALLDAEMPFER
ANSCHLUSS
PLAETTCHEN
PLEUELSTANGE
PEDAL
HAHN

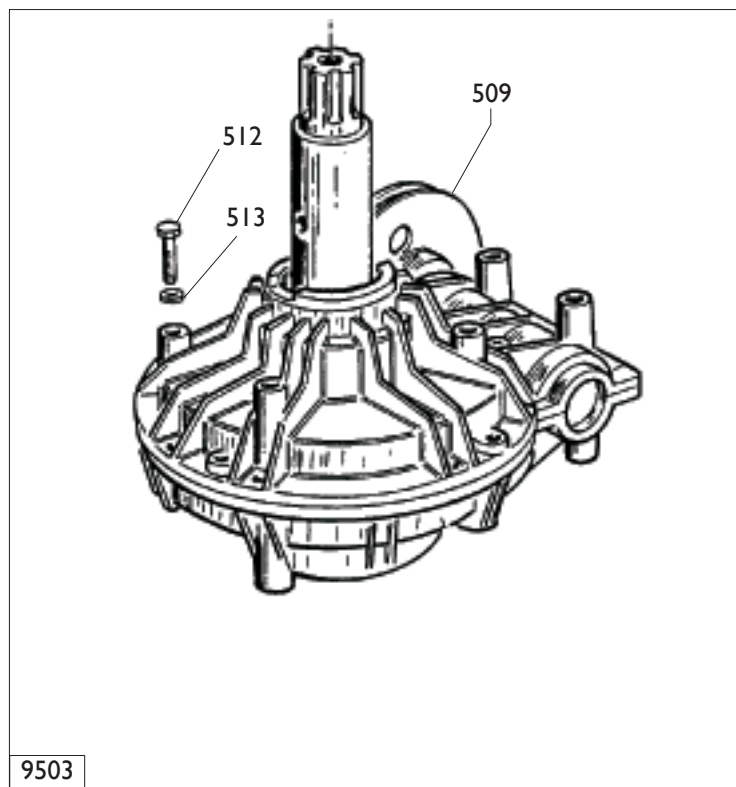
GR.PEDALES
DOUILLE
SILENCIEUX
RACCORD
PLAQUETTE
BIELLE
PEDALE
ROBINET



0401	238212	KIT GUARNIZIONI	SEALS KIT	DICHTUNGSATZ	KIT JOINTS
0402	424096	TAMPONE	PAD	PUFFER	TAMPON
0403	424364	MOLLA	SPRING	FEDER	RESSORT
0404	323903	FULCRO	FULCRUM	DREHPUNKT	ENTABLURE
0419	2-01242	DADO	NUT		
0420	2-01045	RONDELLA	WASHER		
0421	435055	SPINA	SPIROL		

9403	249612	BRACCIO	ARM	ARM	BRAS
0408	224000	PALETTA	BEAD BREAKER	SCHAUFEL	PELLE
0409	224003	BRACCIO	ARM	ARM	BRAS
0410	323901	RONDELLA	WASHER	UNTERLEGSCHIEBE	RONDELLE
0411	323902	PERNO	PIN	ZAPFEN	PIVOT
0412	324008	VITE M12X90	SCREW		
0413	2-02247	RONDELLA	WASHER	UNTERLEGSCHIEBE	RONDELLE
0414	422255	DADO	NUT	MUTTER	ECROU
0417	425219	MANOPOLA	KNOB	BALLENGRIFF	BOUTON
0422	2-00372	VITE M8X16	SCREW		

9405	5-100483	CILINDRO	CYLINDER	ZYLINDER	CYLINDRE
0358	3-00222	RACCORDO	CONNECTOR	ANSCHLUSS	RACCORD
0406	325561	RONDELLA	WASHER	UNTERLEGSCHIEBE	RONDELLE
0407	434031	ANELLO	RING	RING	ANNEAU
0416	351905	FLANGIA	FLANGE	FLANSCH	FLASQUE
0418	4-101627	STELO	STEM	SHAFT	TIGE
0423	2-00310	VITE M6X20	SCREW		
0424	431864	VITE FISS.CILINDRO	SCREW		
0425	2-00992	DADO M14	NUT		
0426	436779	DADO M6	NUT		
0427	337848	PISTONE	PISTON		
0428	330190	CAMICIA	LINER		
0429	2-00989	DADO	NUT		

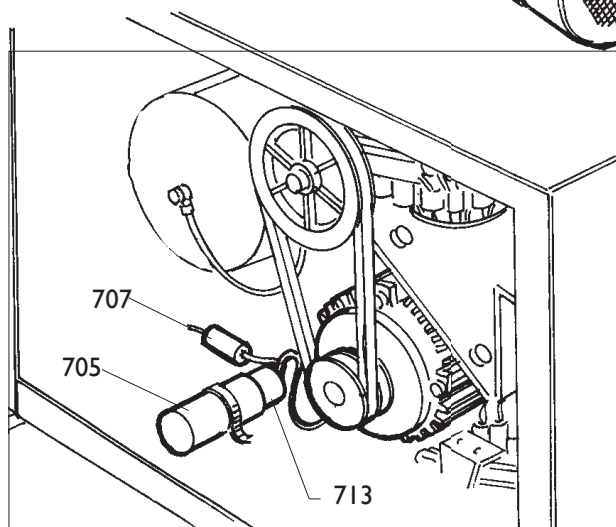
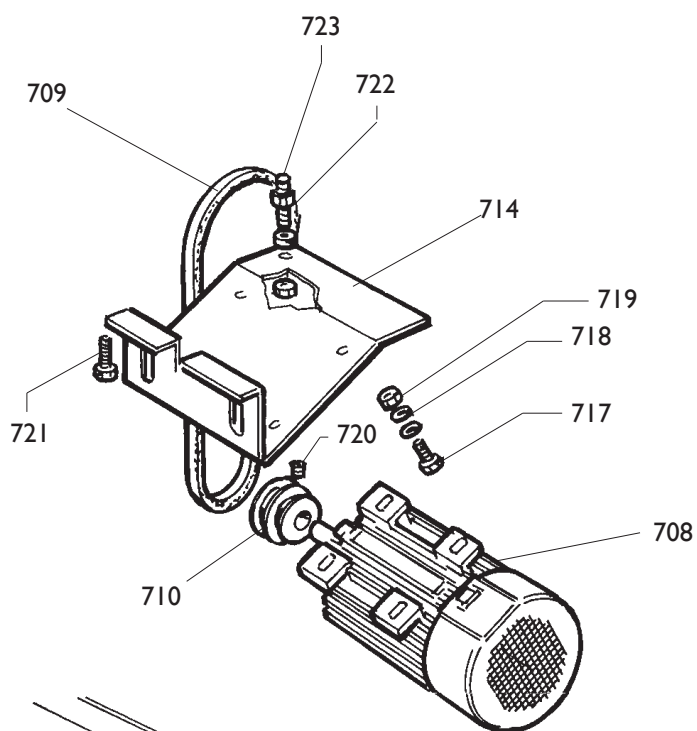


9503	5-102650	RIDUTTORE	GEAR BOX	GETRIEBE	REDUCTEUR
9503	5-102651	RIDUTTORE (pneum.)	GEAR BOX(pn.)	GETRIEBE (pneum.)	REDUCTEUR
0509	314344	PULEGGIA	PULLEY	RIEMENSCHIEBE	POULIE
0509	319073	PULEGGIA (pneum.)	PULLEY (pneum.)	RIEMENSCHIEBE (pn.)	POULIE (pneum.)
0512	2-01046	VITE M10X45	SCREW		
0513	2-00213	RONDELLA D.10	WASHER		

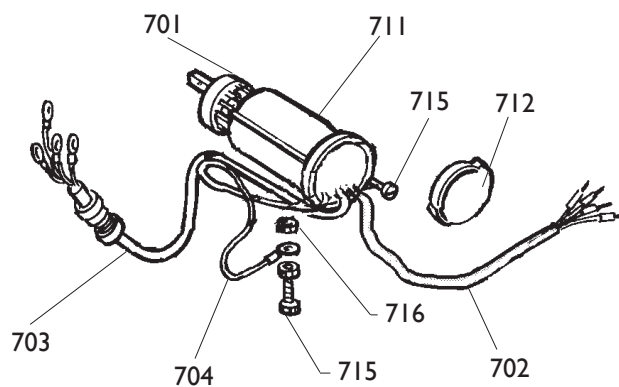


	<b>A 9220 T.I.</b>	<b>Fig. G</b>	<b>03A / 03</b>	<b>Impianto pneumatico</b>
--	--------------------	---------------	-----------------	----------------------------

Ø6	1-01684	TUBO	PIPE	ROHR	TUYAU
Ø8	1-01683	TUBO	PIPE	ROHR	TUYAU
Ø10	1-01685	TUBO	PIPE	ROHR	TUYAU
0253	241841	RACCORDO	CONNECTOR	ANSCHLUSS	RACCORD
0601	252625	PEDALE	PEDAL	PEDAL	PEDALE
0602	346266	TUBO	PIPE	ROHR	TUYAU
0603	342289	TUBO D.10	PIPE	ROHR	TUYAU
0622	3-00117	RACCORDO	CONNECTOR		
9601	242290	VALVOLA	VALVE	VENTIL	VANNE
0604	3-00287	RACCORDO	CONNECTOR	ANSCHLUSS	RACCORD
0605	3-00051	RACCORDO	CONNECTOR	ANSCHLUSS	RACCORD
0628	3-00403	CARTUCCIA	CONNECTOR		
0629	243020	VALVOLA	VALVE		
0630	2-94066	VITE	SCREW		
0631	342286	STAFFA	BRACKET		
9602	252568	GRUPPO	ASSEMBLY	GRUPPE	GROUPE
0607	235463	VALVOLA	VALVE	VENTIL	VANNE
0608	3-00365	VALVOLA	VALVE	VENTIL	VANNE
0609	3-00432	VALVOLA	VALVE	VENTIL	VANNE
0610	3-00221	RACCORDO	CONNECTOR	ANSCHLUSS	RACCORD
0611	3-00135	NIPPLO	CONNECTION	NIPPEL	NIPPLE
0612	3-00004	INNESTO	CLUTCH	KUPPLUNG	EMBAYAGE
0613	352614	TUBO L.1800 mm	PIPE	ROHR	TUYAU
0620	3-00138	RACCORDO	CONNECTOR		
0621	3-00460	RACCORDO	CONNECTOR		
0632	352619	CAPPELOTTO	CUP		
0633	338576	DISTANZIALE	SPACER		
0634	352968	SUPPORTO	SUPPORT		
0635	2-00212	RONDELLA D.8	WASHER		
0636	2-00320	VITE M8X20	SCREW		
0637	452624	ANITVIBRAZIONE	ANTISHOCK		
0638	2-00209	RONDELLA D.4	WASHER		
0639	2-002295	VITE M4X8	SCREW		
9603	252600	SCATOLA	BOX	SCHACHTEL	BOITE
0607	235463	VALVOLA	VALVE	VENTIL	VANNE
0613	352614	TUBO L.1900 mm	PIPE	ROHR	TUYAU
0616	262971	TUBO	PIPE	ROHR	TUYAU
0617	3-00489	MANOMETRO	PRESSURE GAUGE	DRUCKMESSER	MANOMETRE
0618	3-00103	RACCORDO	CONNECTOR	ANSCHLUSS	RACCORD
0619	3-00007	INNESTO	CLUTCH	KUPPLUNG	EMBAYAGE
0621	3-00460	RACCORDO	CONNECTOR		
0623	325035	TUBO D.6 L.180 mm	PIPE		
0624	403571	FASCETTA	RING		
0625	2-71485	VITE M3,9X13	SCREW		
0626	353537	SUPPORTO	SUPPORT		
0627	234171	SCATOLA	BOX		



9702

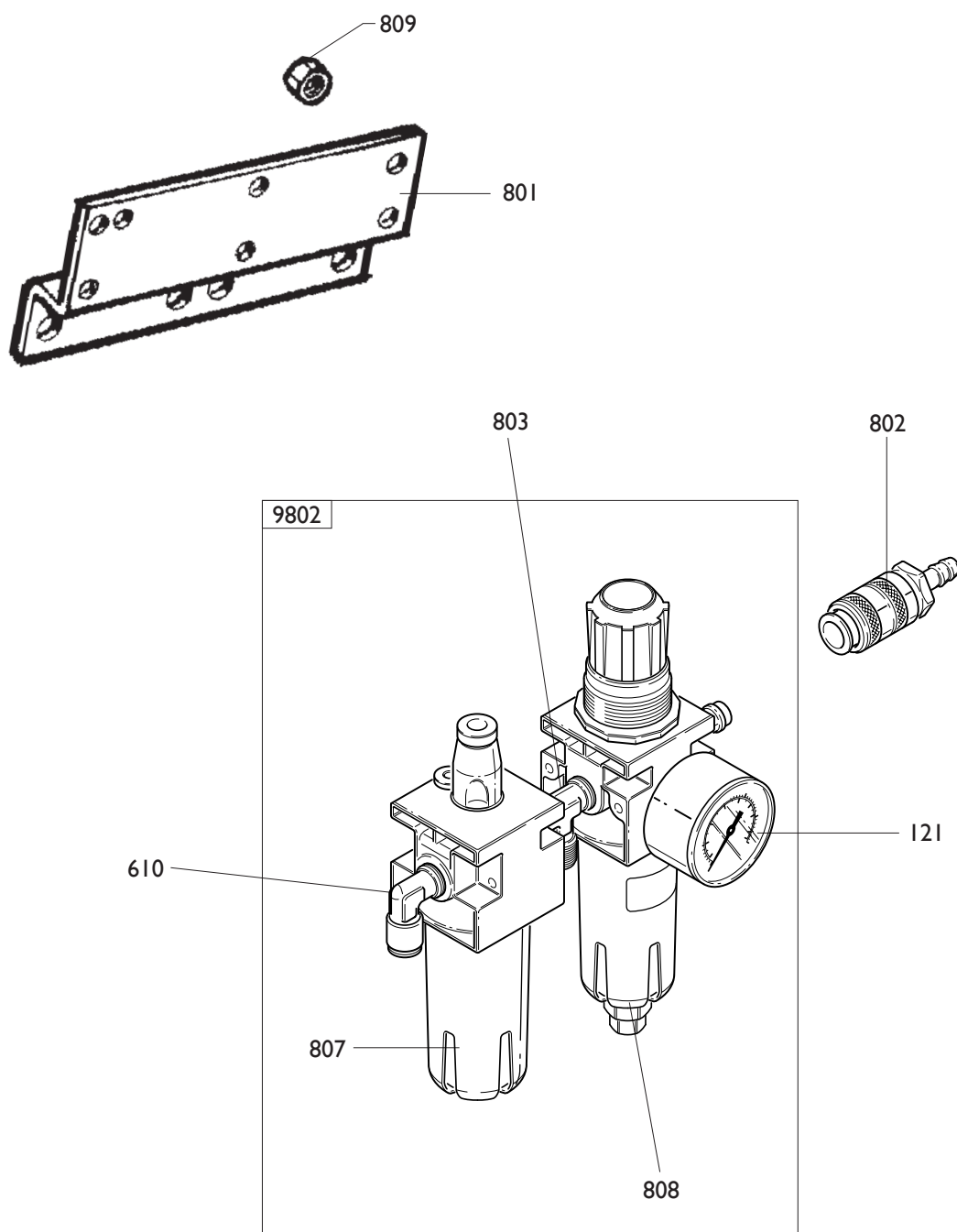


**IMPIANTO ELETTRICO**
**ELECTRIC SYSTEM**
**ELEKTRISCHE ANLAGE INSTALL. ELECTRIQUE**

9702	235574	3ph	3ph	3ph	3ph
0701	5-102742	INVERTITORE	REVERSER	RICHTUNGSWENDER	INVERSEUR
0702	235518	CAVO RETE	CABLE	KABEL	CABLE
0703	225390	CAVO MOTORE	CABLE	KABEL	CABLE
0704	225051	CAVALLOTTO	U-BOLT	BUEGELBOLZEN	CRAMPILLON
0715	2-00605	VITE M4X10	SCREW		
0716	2-00143	DADO	NUT		

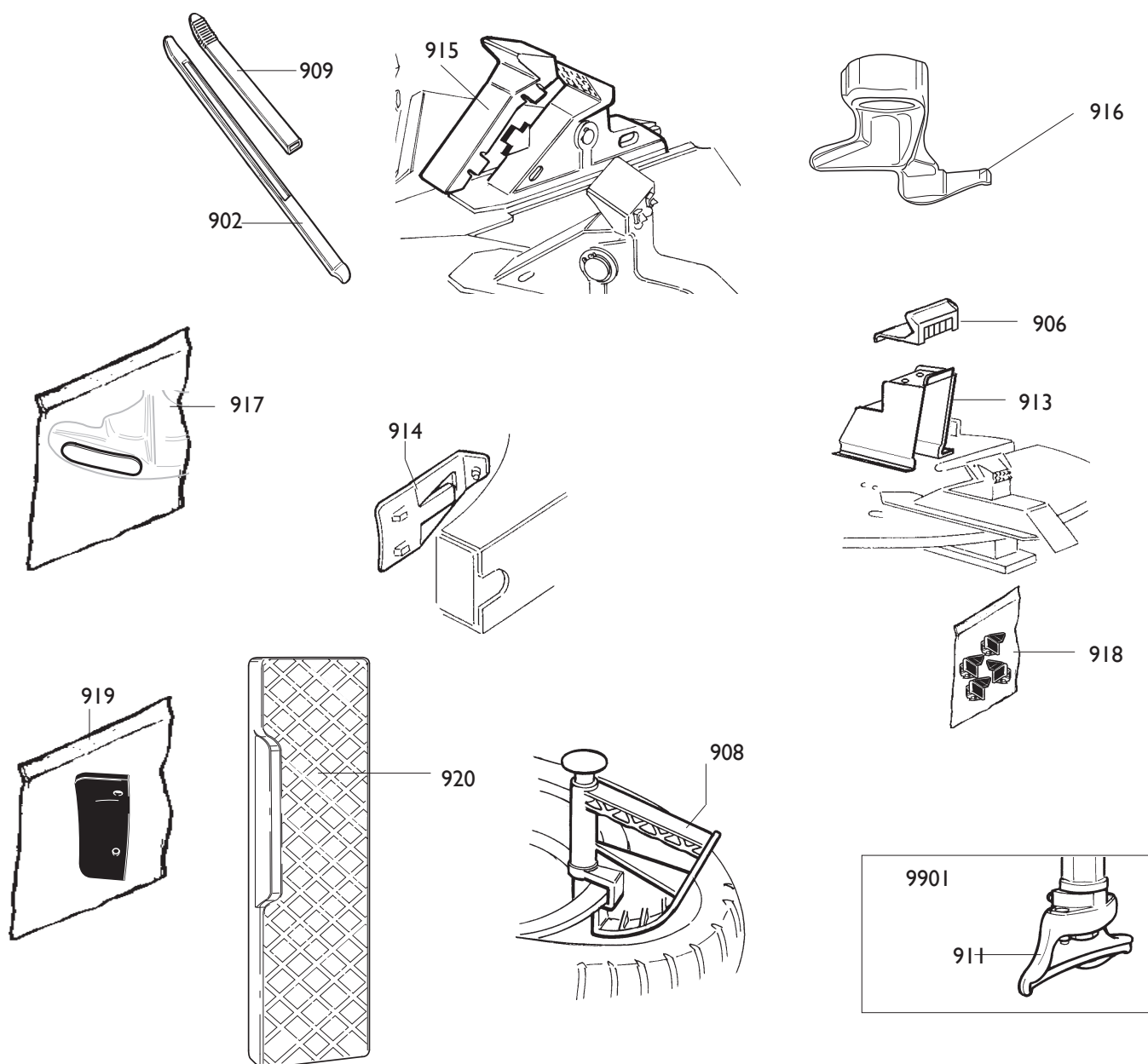
9702	5-103989	110V 1ph C.S.A.	110V 1ph	110V 1ph	110V 1ph
0701	5-102741	INVERTITORE	REVERSER	RICHTUNGSWENDER	INVERSEUR
0702	447801	CAVO	CABLE	KABEL	CABLE
0703	249590	CAVO	CABLE	KABEL	CABLE
0704	249601	CAVALLOTTO	U-BOLT	BUEGELBOLZEN	CRAMPILLON
0705	430750	CAPPELOTTO	CAP NUT	ABSCHLUSSKAPPE	CAPUCHON
0707	430770	RESISTENZA	RESISTANCE	WIDERSTAND	RESISTANCE
0713	4-112706	CONDENSATORE 50MF	CAPACITOR	KONDENSATOR	CONDENSATEUR
0715	2-00605	VITE M4X10	SCREW		
0716	2-00143	DADO	NUT		

	<b>MOTORE</b>	<b>MOTOR</b>	<b>MOTOR</b>	<b>MOTEUR</b>	
0708	412959	380V 3ph	380V 3ph	380V 3ph	380V 3ph
0708	4-112454	110V 1ph 60Hz C.S.A.	110V 1ph 60Hz	110V 1ph 60Hz	110V 1ph 60Hz
0709	3-00555	CINGHIA	BELT	RIEMEN	COURROIE
0710	325274	PULEGGIA	PULLEY	RIEMENSCHIEBE	POULIE
0711	432065	PROTEZIONE	SHIELD	ABDECKUNG	PROTECTION
0712	430991	COPERCHIO	LID	DECKEL	COUVERCLE
0714	334768	CULLA	CRADLE	WIEGE	BERCEAU
0717	2-00374	VITE M 8X25	SCREW		
0718	339208	RONDELLA M8	WASHER		
0719	421349	DADO M8	NUT		
0720	2-01091	VITE M6X5	SCREW		
0721	2-00328	VITE M10X20	SCREW		
0722	2-00152	DADO M10	NUT		
0723	455920	VITE SPEC.M10X60	SCREW		



0121	3-00488	MANOMETRO	PRESSURE GAUGE	DRUCKMESSER	MANOMETRE
0801	335695	STAFFA	BRACKET	KLAUE	ETRIER
0802	3-00257	GIUNTO	COUPLING	KUPPLUNG	ACCOUPLEMENT
0803	3-00001	RACCORDO	CONNECTOR	ANSCHLUSS	RACCORD
0610	3-00221	RACCORDO	CONNECTOR	ANSCHLUSS	RACCORD
0809	2-00125	DADO M4	NUT		
9802	456522	FILTRO	FILTER	FILTER	FILTRE
0807	457512	BICCHIERE FILTRO	BOWL	GLAS	BOL
0808	457511	BICCHIERE LUBRIF.	BOWL	GLAS	BOL





0902	4-108275	LEVA	LEVER	HEBEL	LEVIER
0906	435202	CUNEO	WEDGE	KEIL	COIN
0908	801435685	PINZA	PLIERS	ZANGE	PINCE
0909	8-11100104	KIT 6 PROT.LEVA	SHIELD	ABDECKUNG	PROTECTION
0913	801258650	KIT 4 ATTACCHI MOTO 15-24		ADAPTOR	
0914	801260402	STALLONATORE	BEAD BREAKER	WULSTABDRUECKER	DEBALLONEUR
0915	8-11100108	KIT 12 PROTEZ.CUNEO	SHIELD	ABDECKUNG	PROTECTION
0916	801252083	KI TORRETTA 8"	M/D HEAD	DREHKOPF	TOURELLE
0917	8-11100107	KIT 5 PASTIGLIE	INSERT	EINLAGE	INSERT
0918	8-11100106	KIT 10 INSERTI	INSERT	EINLAGE	INSERT
0919	8-11100105	KIT PROTEZ.PALETTA	SHIELD	ABDECKUNG	PROTECTION
0920	801458663	PROTEZIONE	SHIELD	ABDECKUNG	PROTECTION

9901	801250309	KIT torretta plastica	Plastic m/d head	Kunststoffmontagek.	Tourelle plastique
0911	450310	Torretta plastica	Plastic m/d head	Kunststoffmontagekopf	Tourelle plastique

				<b>NOTE</b>
---	--	--	--	-------------

Handwriting practice lines consisting of 20 sets of three horizontal dashed lines.



Il disegno è realizzato con tutti i particolari ma solo quelli codificati sono forniti come ricambi. L'Azienda si riserva la facoltà di apportare modifiche senza preavviso.



Via per Carpi n°9 - 42015 Correggio (RE) ITALY  
Tel. ++39 0522 639111 - Fax ++39 0522 639150  
[www.corgi.com](http://www.corgi.com) - [info@corgi.com](mailto:info@corgi.com)

The drawing shows all parts but only the coded parts are supplied as spares. The Company reserves the right to make modifications without prior notice.

**COMIM** - Cod. 4-100548C 04\_2012.