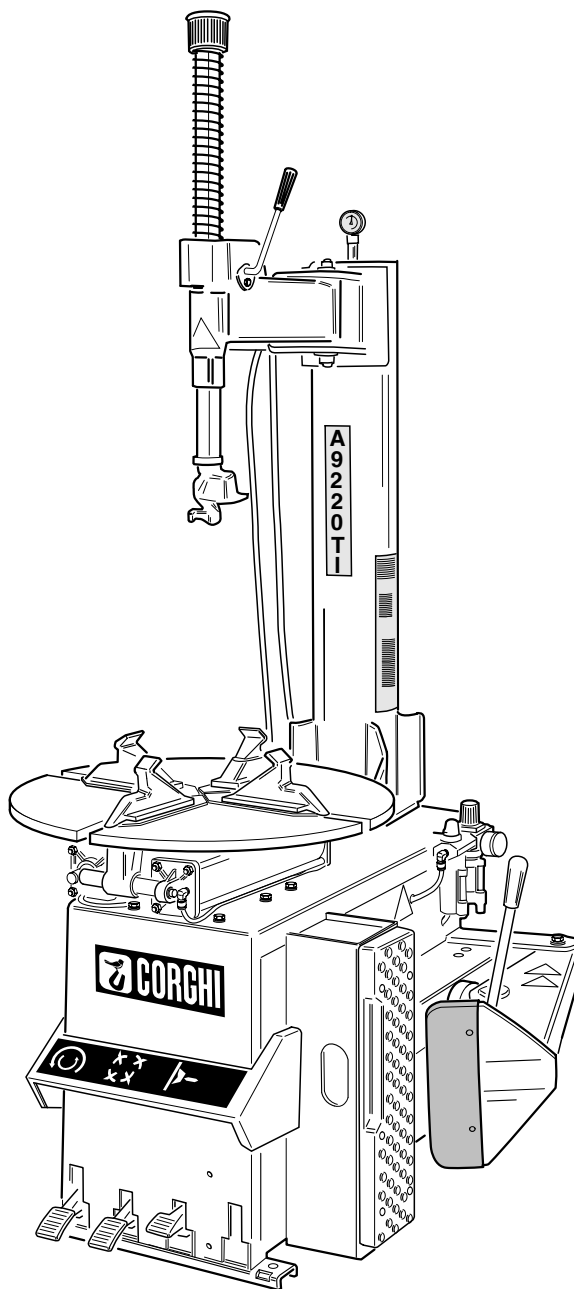


Questo libretto non autorizza l'utente ad intervenire sulle macchine ad esclusione di quanto esplicitamente descritto nel Manuale d'uso, ma consente all'utente di fornire informazioni precise all'Assistenza tecnica, al fine di ridurre i tempi di intervento.

# A9220 TI

The "Spare parts" booklet does not authorize the user to carry out work on the machine unless expressly specified in the instruction manual, but does enable him to provide accurate information to the assistance service in order to reduce downtime.

## PEZZI DI RICAMBIO SPARE PARTS LIST ERSATZTEILLISTE PIECES DE RECHANGE



Code

**4-I00548E**

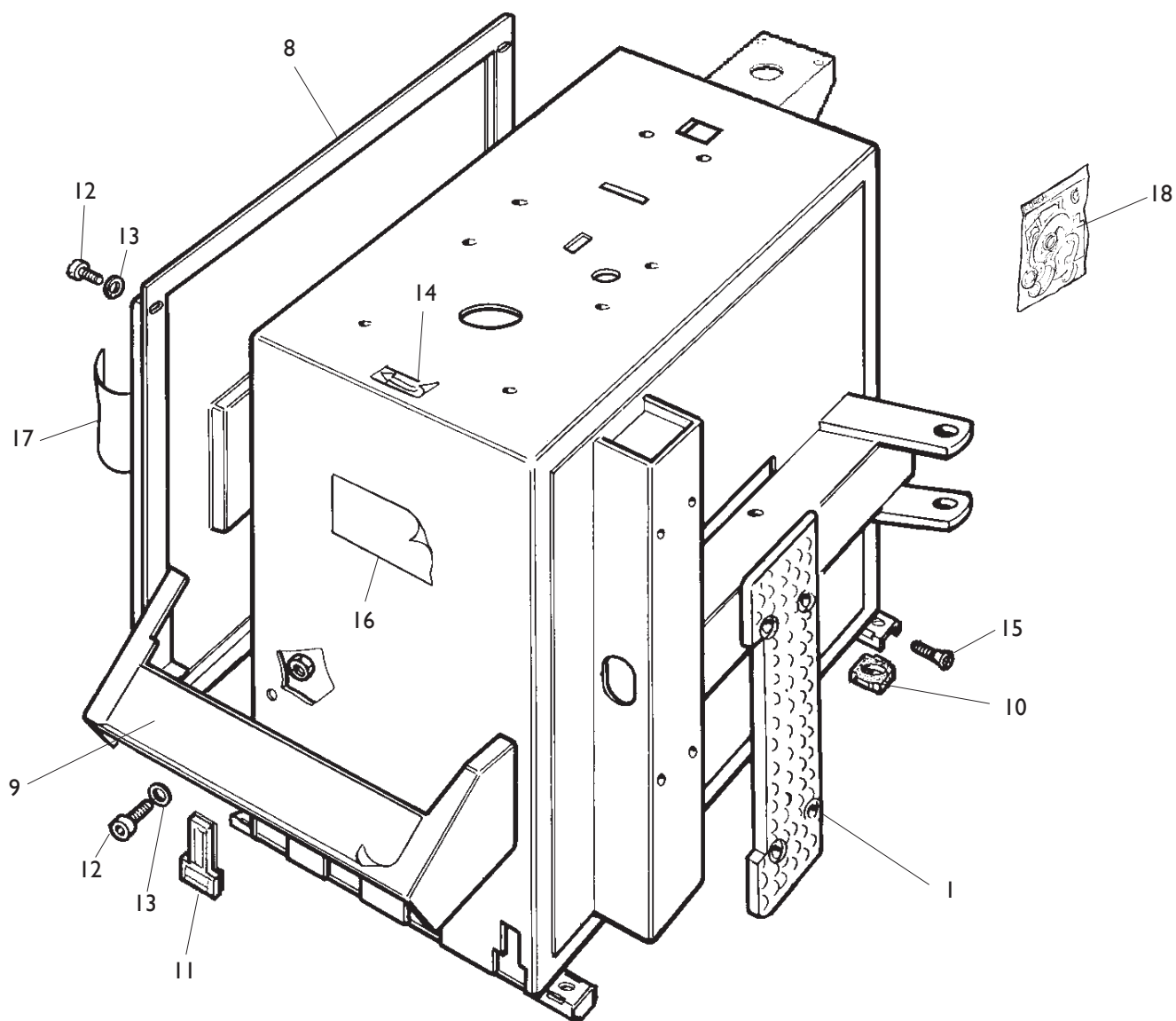
Production from

**11 / 13**

Der Katalog Ersatzteile stellt keine Genehmigung zu eigenmächtigen Eingriffen dar (mit Ausnahme jener im Handbuch beschriebenen), sondern er soll den Anwender in die Lage versetzen, dem technischen Service präzise Informationen zu liefern, um die Reparaturzeiten zu verkürzen.

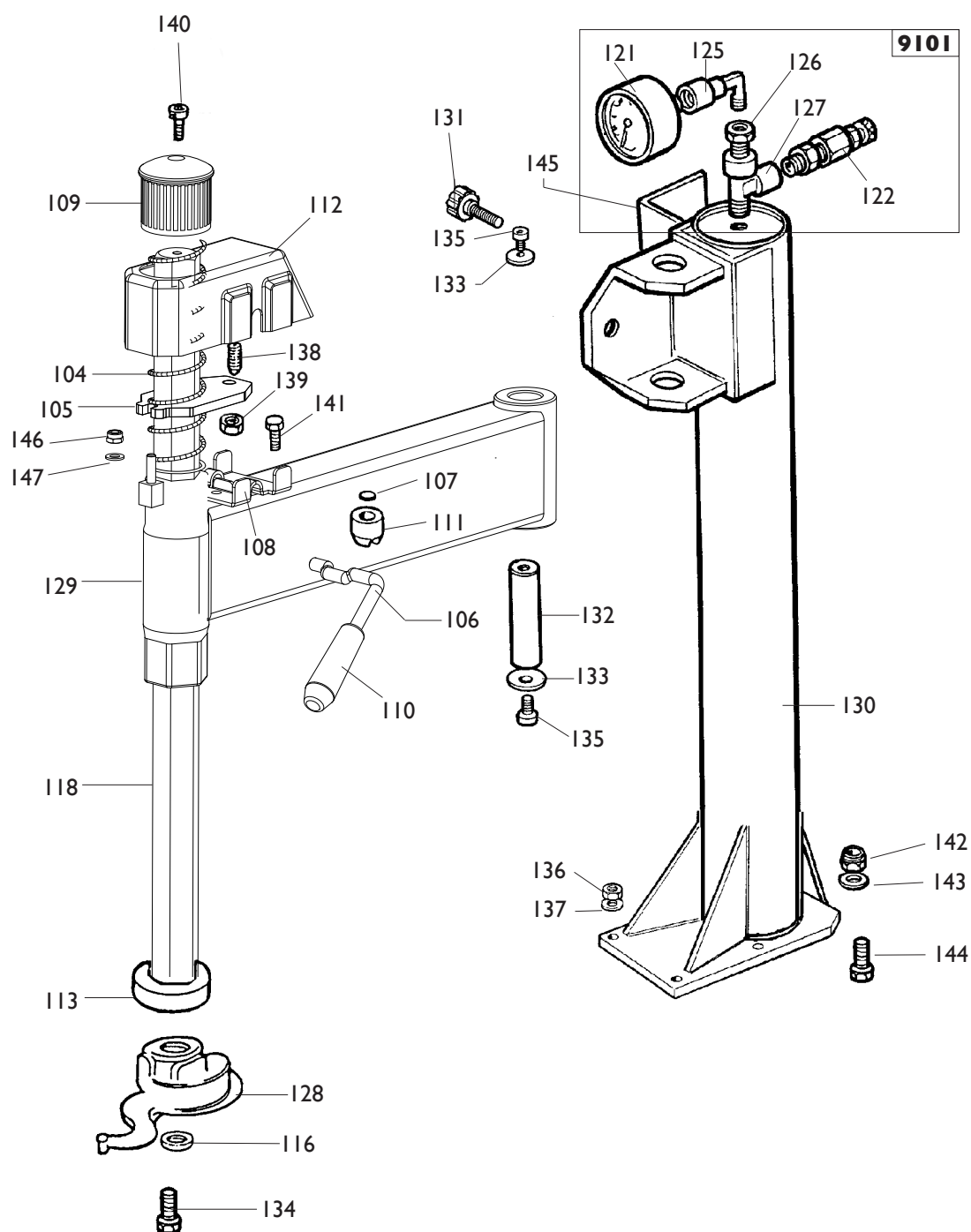



Le livret "Pièces de rechange", n'autorise pas l'utilisateur à intervenir sur les machines, sauf pour tout ce qui est clairement décrit dans le manuel d'utilisation, mais lui permet de fournir des informations précises à l'assistance technique, afin de diminuer les délais d'intervention.



	<b>A 9220 T.I.</b>	<b>Fig. A</b>	<b>03B / 03</b>	<b>Cassone</b>
--	--------------------	---------------	-----------------	----------------

0001	436199	APPOGGIO	RIM SUPPORT
0008	341176	COFANO	HOOD
0009	429976	PROTEZIONE	SHIELD
0010	422019	PIEDE	FOOT
0011	429006	TAPPO	PLUG
0012	2-00310	VITE M6X20	SCREW
0013	2-00211	RONDELLA D.6	WASHER
0014	418135	AD.ROTAZIONE	LABEL
0015	2-01885	VITE M6X25	SCREW
0016	460384	TARGHETTA	LABEL
0017	461236	TARGHETTA	LABEL
0018	5-104895	KIT ADESIVI A9220 TI	LABEL KIT A9220 TI



	<b>A 9220 T.I.</b>	<b>Fig. B</b>	<b>10 / 13</b>	<b>Palo + braccio operante</b>
--	--------------------	---------------	----------------	--------------------------------

0104	423765	MOLLA	SPRING
<b>0105</b>	<b>4-117906</b>	<b>PIATTO</b>	<b>PLATE</b>
0106	440279	LEVA	LEVER
0107	440280	PIASTRINA	PLATE
0108	440281	PIASTRINA	PLATE
0109	423907	POMOLO	KNOB
0110	417351	MANOPOLA	KNOB
0111	440284	NOTTOLINO	PAWL
0112	440285	CARTER	CASING
0113	428681	ANELLO	RING
0116	350194	RONDELLA	WASHER
0118	343105	BRACCIO	ARM
0128	258458	TORRETTA	M/D HEAD
<b>0129</b>	<b>4-117931</b>	<b>BRACCIO</b>	<b>ARM</b>
0130	5-101130	PALO	SHAFT
0131	441580	MANOPOLA	KNOB
0132	323881	PERNO	PIN
0133	318216	RONDELLA	WASHER
0134	350197	VITE	SCREW
0135	2-01225	VITE M12X25	SCREW
0136	2-01275	DADO M10	NUT
0137	441631	RONDELLA	WASHER
0138	2-71370	VITE M12X30	SCREW
0139	2-00153	DADO M12	NUT
0140	2-00373	VITE M8X20	SCREW
<b>0141</b>	<b>2-00372</b>	<b>VITE M8X16</b>	<b>SCREW</b>
0142	2-01019	DADO M10	NUT
0143	2-00213	RONDELLA M10	WASHER
0144	2-00381	VITE M8X35	SCREW
0145	338808	SUPPORTO	SUPPORT
<b>0146</b>	<b>2-01137</b>	<b>DADO M8</b>	<b>NUT</b>
<b>0147</b>	<b>2-00212</b>	<b>RONDELLA D.8</b>	<b>WASHER D.8</b>

9101	241608	GRUPPO DI GONFIAGGIO	GROUP INFLATION
0121	3-00488	MANOMETRO	PRESSURE GAUGE
0122	3-00356	VALVOLA	VALVE
0125	3-00138	RACCORDO	CONNECTOR
0126	3-00271	NIPPLO	CONNECTION
0127	3-00131	RACCORDO	CONNECTOR



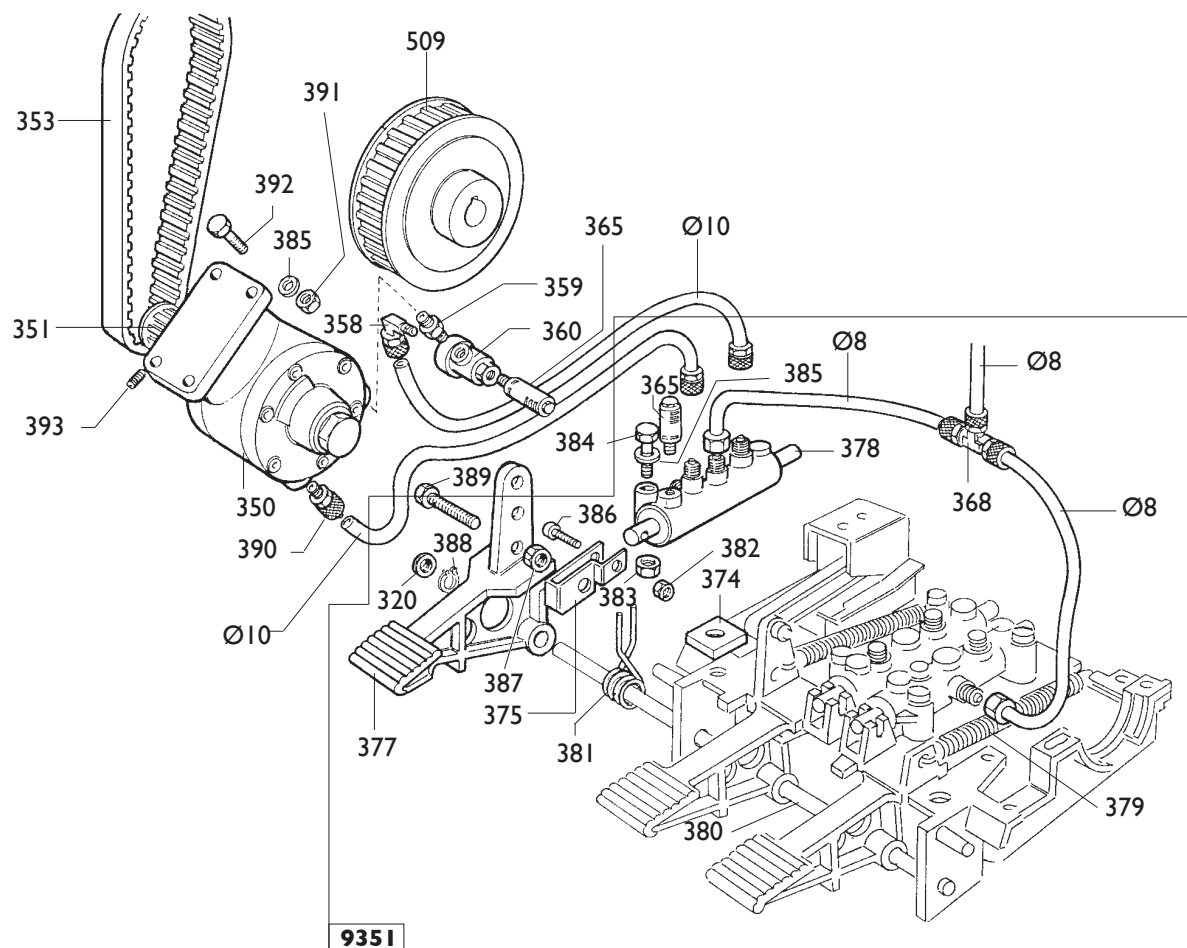
0242	323363	RONDELLA	WASHER
0241	426514	TAPPO	PLUG
0243	238548	KIT GUARNIZIONI	SEALS KIT
0270	2-01016	VITE	SCREW

9212	253801	AUTOCENTRANTE T.I	TURNTABLE T.I
0271	339146	PUNTE DI BLOCC.	LOCKING PEAK
0272	253813	APPOGGIO T.I.TRAINANTE	RIM SUPPORT T.I.
0273	441100	RACCORDO	CONNECTOR
0274	2-01059	SPINA	PLUG
0275	353804	PERNO	PIN
0276	354638	COPRIASOLA	COVER
0277	253812	APPOGGIO T.I.TRAINATO	RIM SUPPORT T.I.
0280	353803	BOCCOLA	BUSHING
0283	253758	PIATTO	PLATE
0284	253776	FLANGIA	FLANGE
0285	455082	RONDELLA	WASHER
0286	2-02199	VITE	SCREW
0287	437964	RONDELLA	WASHER
0288	2-02200	DADO	NUT
0289	354308	TUBO	TUBE
0290	2-00214	RONDELLA	WASHER
0297	2-00025	SEEGER D.12	SEEGER
0298	2-01283	SEEGER D.65	SEEGER

9213	253784	CILINDRO DESTRO	CYLINDER RIGHT
9213	253783	CILINDRO SINISTRO	CYLINDER LEFT
0281	3-02045	RACCORDO	CONNECTOR
0282	3-02044	RACCORDO	CONNECTOR
0291	2-01137	DADO M8	NUT
0299	4-115948	FLANGIA POST.	FLANGE
0300	4-115949	TIRANTE	BOLT
0301	4-115951	CAMICIA	LINER
0302	5-105111	FLANGIA ANT.	FLANGE
0303	4-115950	STELO	ROD

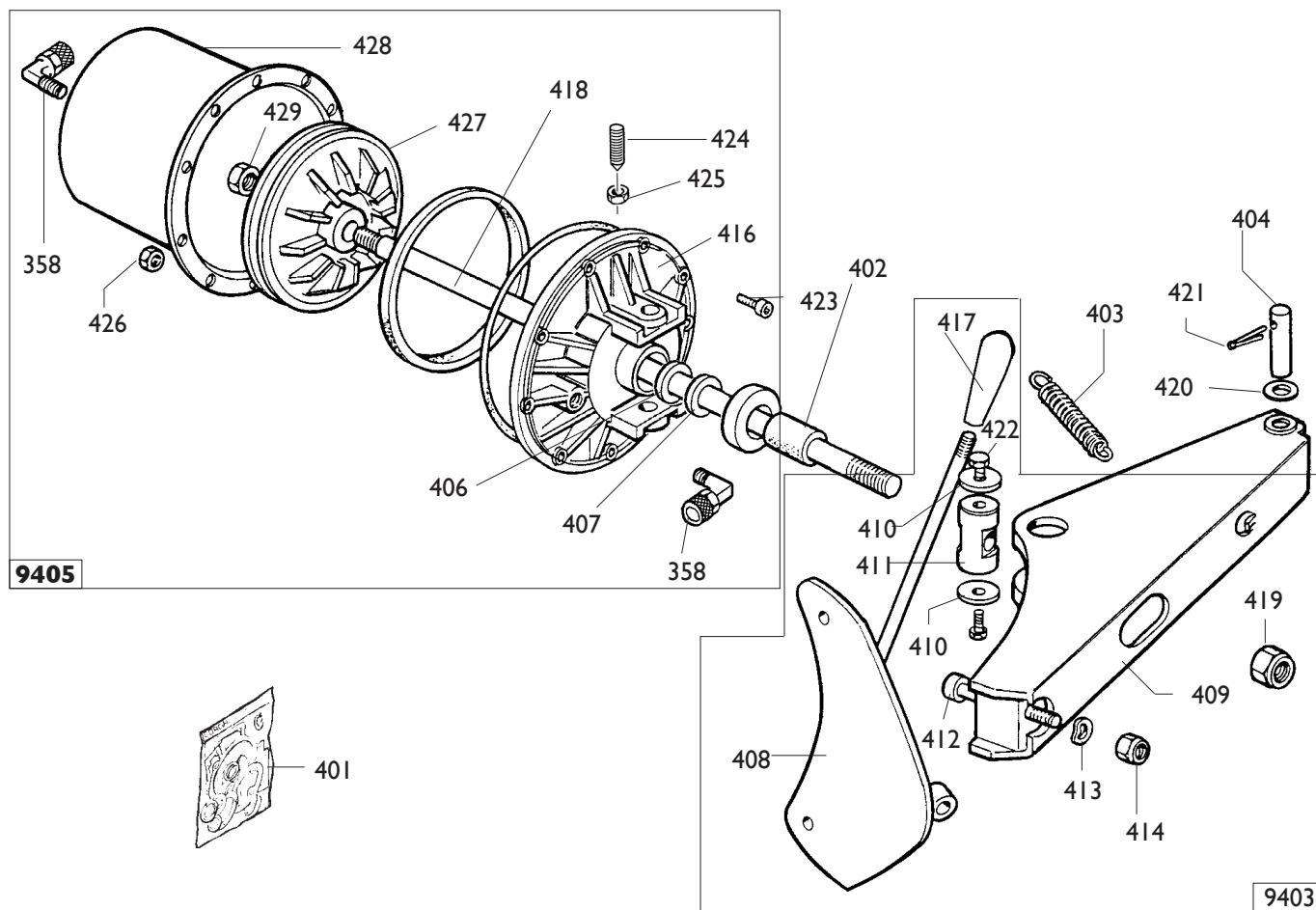






Ø8	1-01683	TUBO	PIPE
Ø10	1-01685	TUBO	PIPE
0350	319135	MOTORE	MOTOR
0351	319076	PULEGGIA	PULLEY
0353	3-00585	CINGHIA	BELT
0358	3-00109	RACCORDO	CONNECTOR
0359	3-00141	NIPPLO	CONNECTION
0360	3-00316	VALVOLA	VALVE
0509	319073	PULEGGIA	PULLEY
0390	3-00040	RACCORDO	CONNECTION
0391	422288	DADO	NUT
0392	2-00363	VITE	SCREW
0393	2-00801	VITE	SCREW

9351	270526	PEDALIERA	CONTROL PEDAL
0320	452011	BOCCOLA	BUSHING
0365	3-00183	SILENZIATORE	SILENCER
0368	3-00112	RACCORDO	CONNECTOR
0374	329058	PIASTRINA	PLATE
0375	331381	BIELLA	TRACE
0377	252030	PEDALE	PEDAL
0378	5-102740	RUBINETTO	COCK
0379	410628	MOLLA	SPRING
0380	325583	PERNO	PIN
0381	4-109664	MOLLA	SPRING
0382	2-01018	DADO	NUT
0383	2-01979	DADO	NUT
0384	2-00411	VITE	SCREW
0385	2-00211	RONDELLA	WASHER
0386	2-00911	VITE	SCREW
0387	2-01979	DADO	NUT
0388	2-00025	SEGER	SEGER
0389	2-00366	VITE	SCREW



0401	238212	KIT GUARNIZIONI
0402	424096	TAMPONE
0403	424364	MOLLA
0404	323903	FULCRO
0419	2-01242	DADO
0420	2-01045	RONDELLA
0421	435055	SPINA
0424	431864	VITE FISS.CILINDRO
0425	2-00992	DADO M14

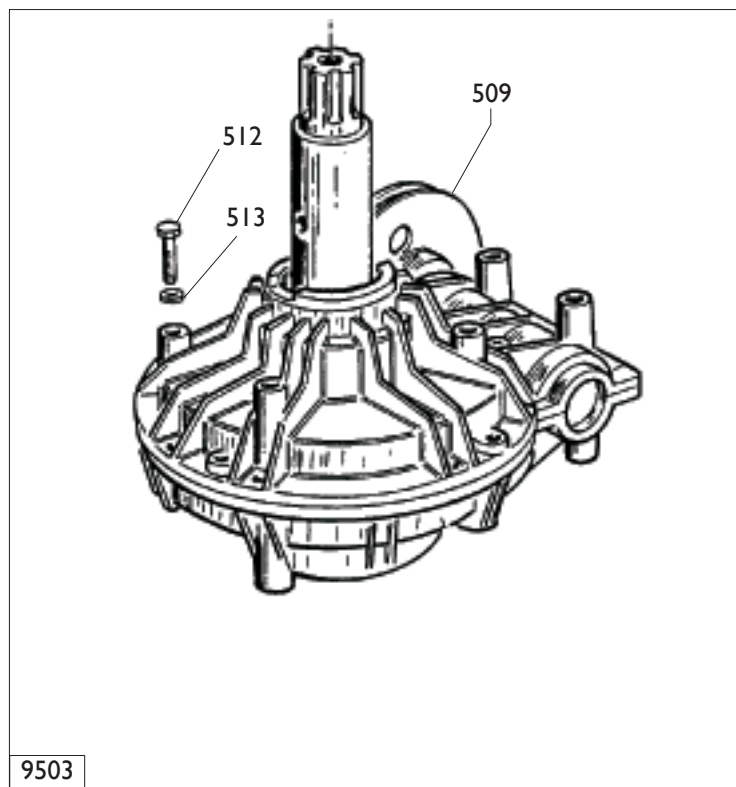
SEALS KIT
PAD
SPRING
FULCRUM
NUT
WASHER
SPIROL
SCREW
NUT

9403	249612	BRACCIO
0408	224000	PALETTA
0409	224003	BRACCIO
0410	323901	RONDELLA
0411	323902	PERNO
0412	324008	VITE M12X90
0413	2-02247	RONDELLA
0414	422255	DADO
0417	425219	MANOPOLA
0422	2-00372	VITE M8X16

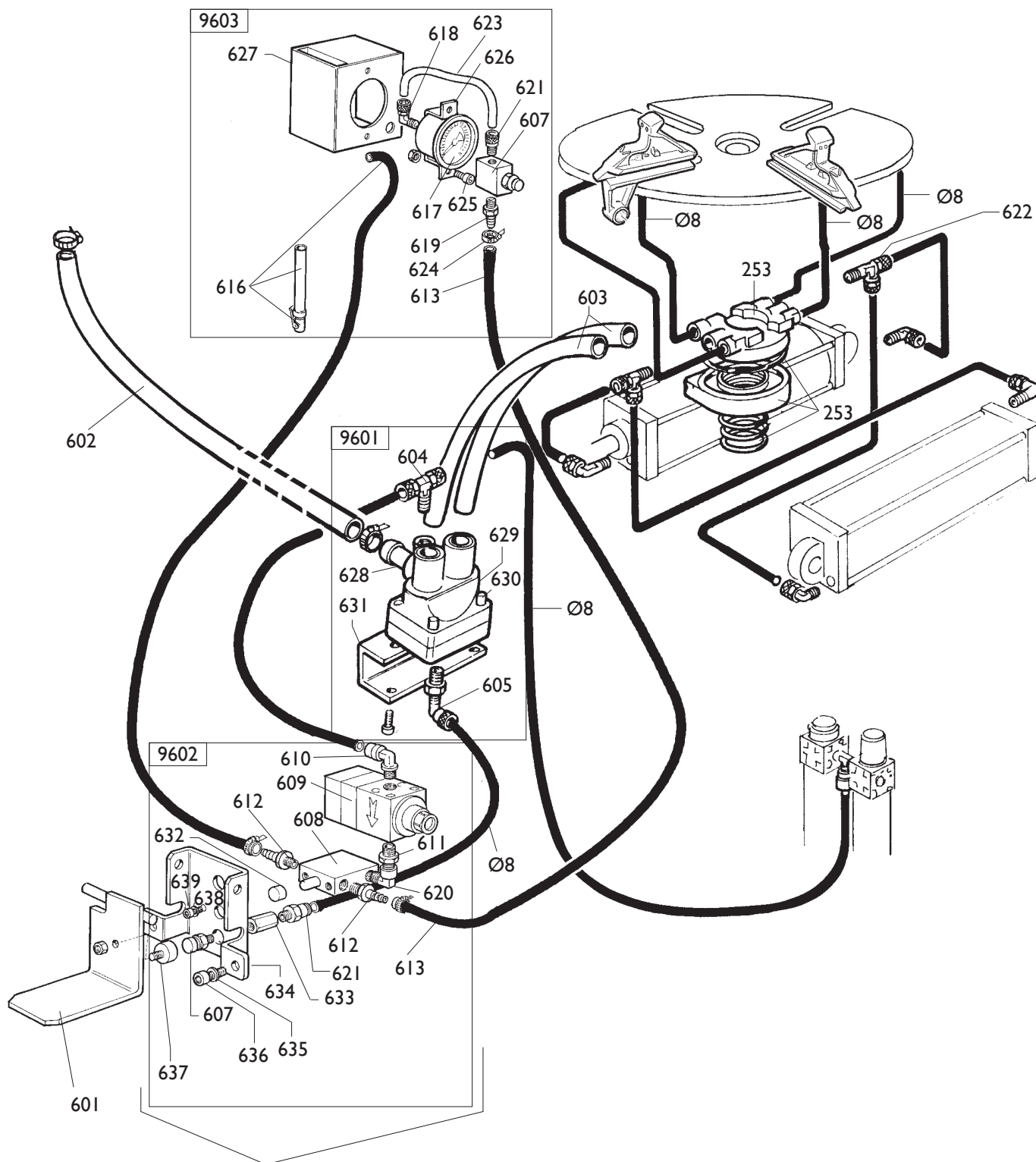
ARM
BEAD BREAKER
ARM
WASHER
PIN
SCREW
WASHER
NUT
KNOB
SCREW

9405	5-100483	CILINDRO
0358	3-00222	RACCORDO
0406	325561	RONDELLA
0407	434031	ANELLO
0416	351905	FLANGIA
0418	4-101627	STELO
0423	2-00310	VITE M6X20
0426	436779	DADO M6
0427	337848	PISTONE
0428	330190	CAMICIA
0429	2-00989	DADO

CYLINDER
CONNECTOR
WASHER
RING
FLANGE
STEM
SCREW
NUT
PISTON
LINER
NUT

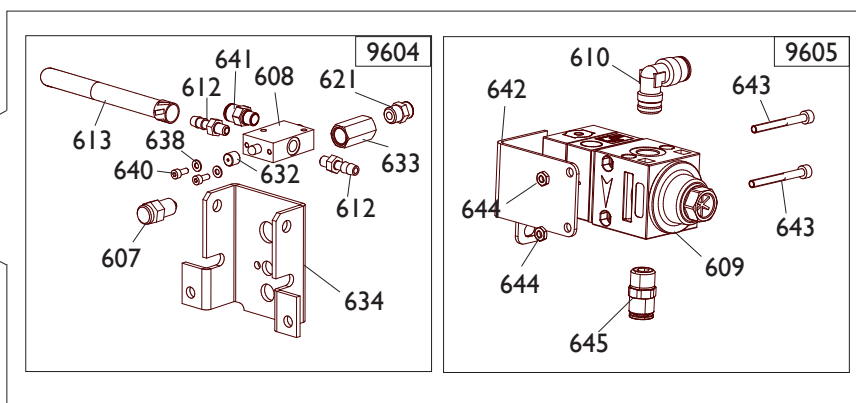


9503	5-102650	RIDUTTORE	GEAR BOX
9503	5-102651	RIDUTTORE (pneum.)	GEAR BOX(pn.)
0509	314344	PULEGGIA	PULLEY
0509	319073	PULEGGIA (pneum.)	PULLEY (pneum.)
0512	2-01046	VITE M10X45	SCREW
0513	2-00213	RONDELLA D.10	WASHER



**FINO A 03-2013  
UP TO 03-2013**

**IN PROD. DA 04-2013  
SINCE 04-2013**

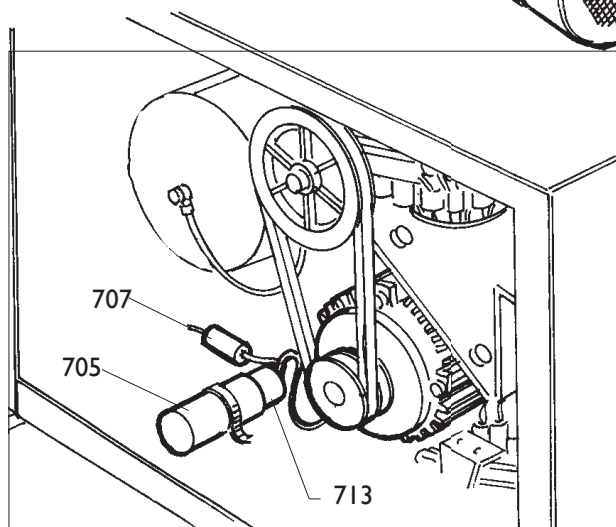
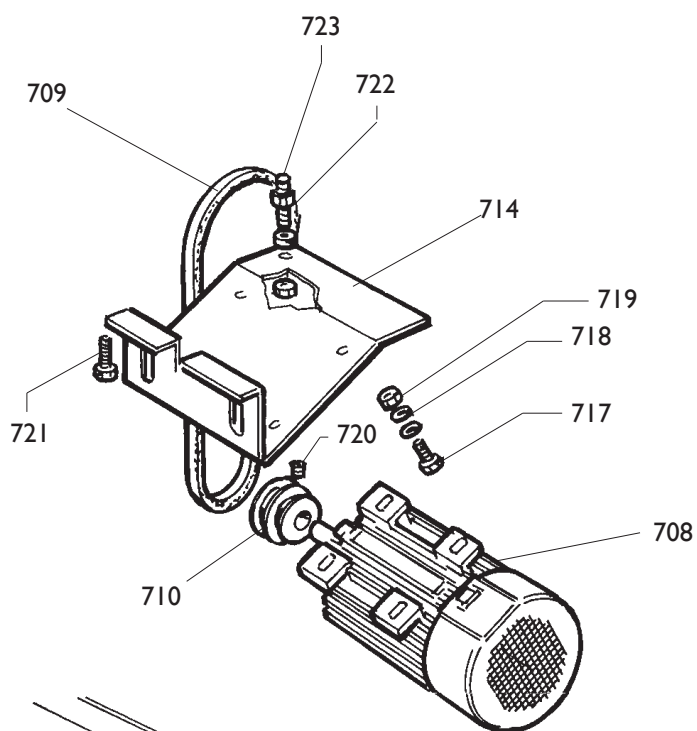


Ø6	1-01684	TUBO	PIPE
Ø8	1-01683	TUBO	PIPE
Ø10	1-01685	TUBO	PIPE
0253	241841	RACCORDO GIREVOLE T.I.	CONNECTOR
0601	252625	PEDALE	PEDAL
0602	346266	TUBO	PIPE
0603	342289	TUBO D.10	PIPE
0622	3-00117	RACCORDO	CONNECTOR

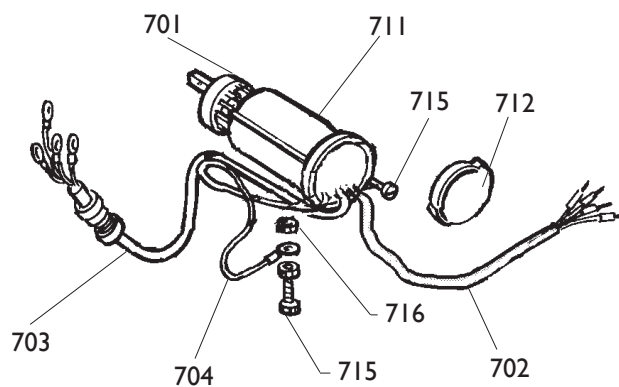
9601	242290	VALVOLA DI SPARO CPL	VALVE FIRING CPL
0604	3-00287	RACCORDO	CONNECTOR
0605	3-00051	RACCORDO	CONNECTOR
0628	3-00403	CARTUCCIA	CONNECTOR
0629	243020	VALVOLA DI SPARO	VALVE
0630	2-94066	VITE	SCREW
0631	342286	STAFFA	BRACKET

9602	252568	GRUPPO GONFIAGGIO	GROUP INFLATION
9604	5-105676	GRUPPO gonfiaggio	GROUP INFLATION
9605	5-105674	VALVOLA GONF. + STAFFA	VALVE WITH PLATE
0607	235463	VALVOLA SGONFIAGGIO	VALVE
0608	3-00365	VALVOLA	VALVE
0609	3-00389	VALVOLA GONFIAGGIO	VALVE
0610	3-00221	RACCORDO	CONNECTOR
0611	3-00135	NIPPOLO	CONNECTION
0612	3-00004	INNESTO	CLUTCH
0613	352614	TUBO L.1800 mm	PIPE
0620	3-00138	RACCORDO	CONNECTOR
0621	3-00460	RACCORDO	CONNECTOR
0632	352619	CAPPELLOTTO	CUP
0633	338576	DISTANZIALE	SPACER
0634	352968	SUPPORTO	SUPPORT
0635	2-00212	RONDELLA D.8	WASHER
0636	2-00320	VITE M8X20	SCREW
0637	452624	ANITVIBRAZIONE	ANTISHOCK
0638	2-00209	RONDELLA D.4	WASHER
0639	2-00295	VITE M4X8	SCREW
0640	2-00289	VITE M4X10	SCREW
0641	3-00464	RACCORDO D.8	CONNECTOR D.8
0642	4-117416	SUPPORTO	SUPPORT
0643	2-00851	VITE M4X40	SCREW
0644	2-02804	DADO M4	NUT
0645	3-00478	RACCORDO D.8	CONNECTOR D.8

9603	252600	SCATOLA	BOX
0607	235463	VALVOLA SGONFIAGGIO	VALVE
0613	352614	TUBO L.1900 mm	PIPE
0616	262971	TUBO	PIPE
0617	3-00489	MANOMETRO	PRESSURE GAUGE
0618	3-00103	RACCORDO	CONNECTOR
0619	3-00007	INNESTO	CLUTCH
0621	3-00460	RACCORDO	CONNECTOR
0623	325035	TUBO D.6 L.180 mm	PIPE
0624	403571	FASCETTA	RING
0625	2-71485	VITE M3,9X13	SCREW
0626	353537	SUPPORTO	SUPPORT
0627	234171	SCATOLA	BOX



9702



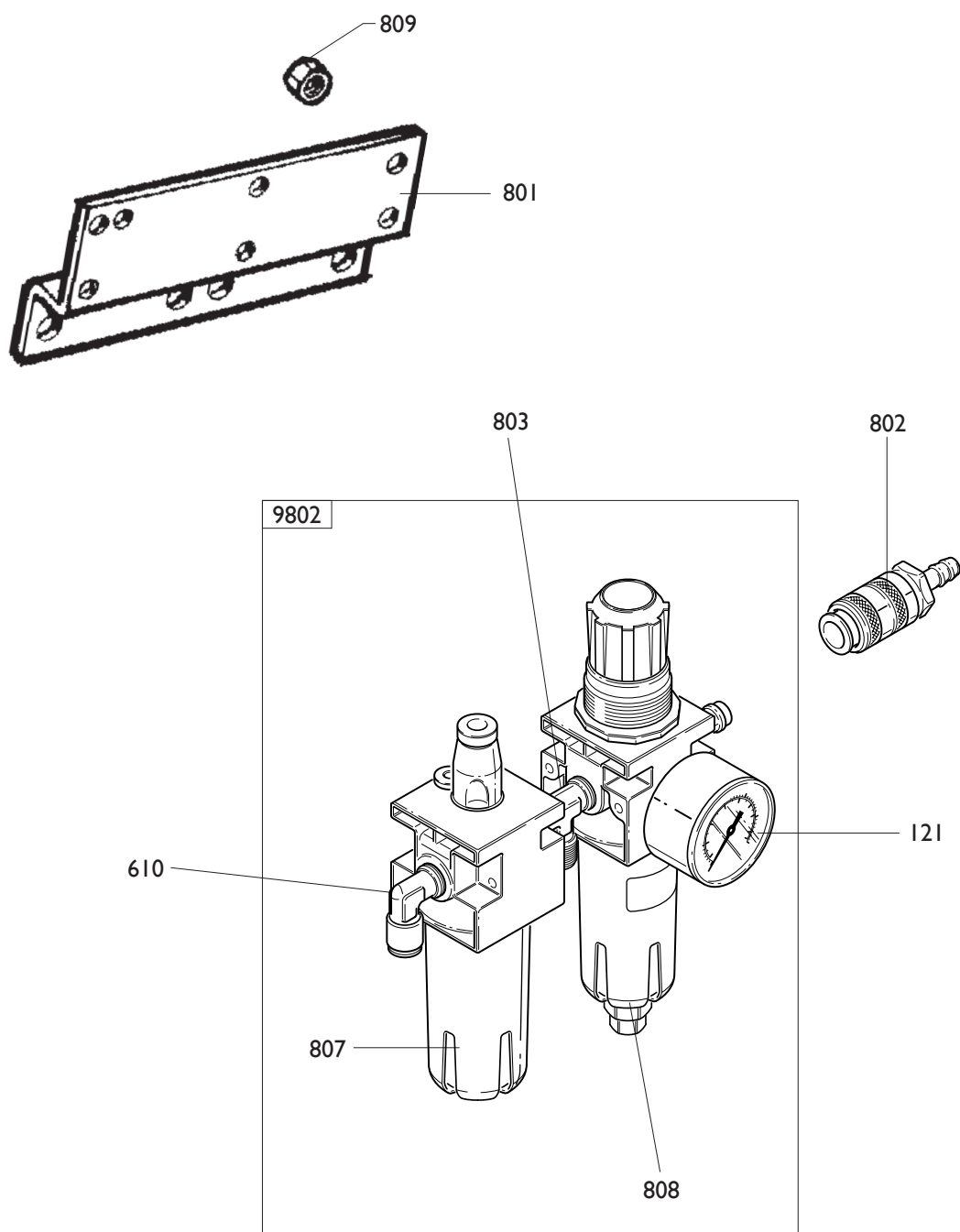
**IMPIANTO ELETTRICO**
**ELECTRIC SYSTEM**

9702	235574	3ph	3ph
0701	5-102742	INVERTITORE	REVERSER
0702	235518	CAVO RETE	CABLE
0703	225390	CAVO MOTORE	CABLE
0704	225051	CAVALLOTTO	U-BOLT
0715	2-00605	VITE M4X10	SCREW
0716	2-00143	DADO	NUT

9702	5-103989	110V 1ph C.S.A.	110V 1ph
0701	5-102741	INVERTITORE	REVERSER
0702	447801	CAVO	CABLE
0703	249590	CAVO	CABLE
0704	249601	CAVALLOTTO	U-BOLT
0705	430750	CAPPELOTTO	CAP NUT
0707	430770	RESISTENZA	RESISTANCE
0713	4-112706	CONDENSATORE 50MF	CAPACITOR
0715	2-00605	VITE M4X10	SCREW
0716	2-00143	DADO	NUT

**MOTORE**
**MOTOR**

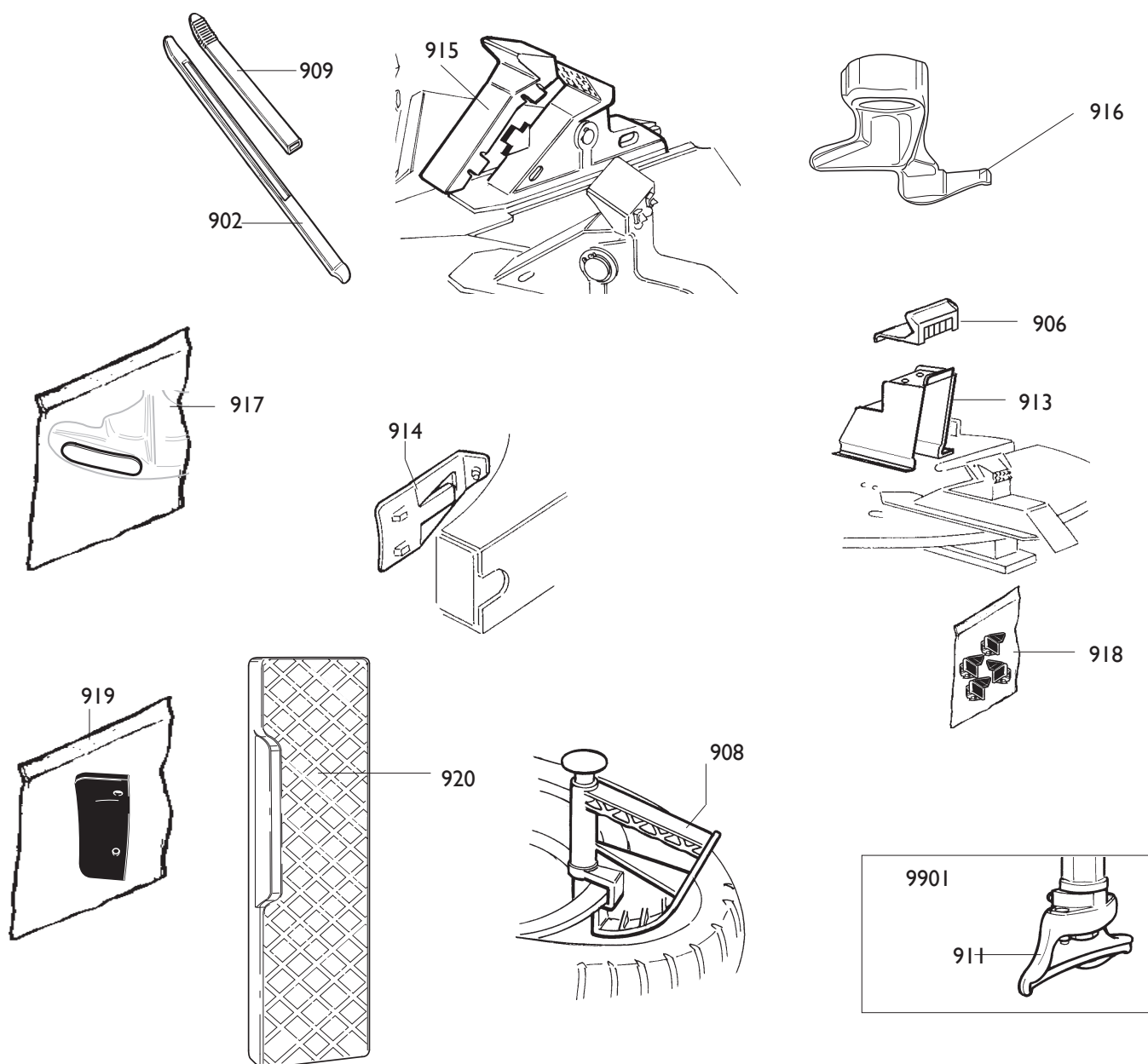
0708	412959	380V 3ph	380V 3ph
0708	4-112454	110V 1ph 60Hz C.S.A.	110V 1ph 60Hz
0709	3-00555	CINGHIA	BELT
0710	325274	PULEGGIA	PULLEY
0711	432065	PROTEZIONE	SHIELD
0712	430991	COPERCHIO	LID
0714	334768	CULLA	CRADLE
0717	2-00374	VITE M 8X25	SCREW
0718	339208	RONDELLA M8	WASHER
0719	421349	DADO M8	NUT
0720	2-01091	VITE M6X5	SCREW
0721	2-00328	VITE M10X20	SCREW
0722	2-00152	DADO M10	NUT
0723	455920	VITE SPEC.M10X60	SCREW



0801	335695	STAFFA	BRACKET
0802	3-00257	GIUNTO	COUPLING
0809	2-00125	DADO M4	NUT

9802	456522	FILTRO	FILTER
0121	3-00488	MANOMETRO	PRESSURE GAUGE
0610	3-00221	RACCORDO	CONNECTOR
0807	457512	BICCHIERE FILTRO	BOWL
0808	457511	BICCHIERE LUBRIF.	BOWL
0803	3-00001	RACCORDO	CONNECTOR





0902	4-108275	LEVA	LEVER
0906	435202	CUNEO	WEDGE
0908	801435685	PINZA	PLIERS
0909	8-11100104	KIT 6 PROT.LEVA	SHIELD
0913	801258650	KIT 4 ATTACCHI MOTO 15-24	ADAPTOR
0914	801260402	STALLONATORE	BEAD BREAKER
0915	8-11100108	KIT 12 PROTEZ.CUNEO	SHIELD
0916	801252083	KI TORRETTE 8"	M/D HEAD
0917	8-11100107	KIT 5 PASTIGLIE	INSERT
0918	8-11100106	KIT 10 INSERTI	INSERT
0919	8-11100105	KIT PROTEZ.PALETTE	SHIELD
0920	801458663	PROTEZIONE	SHIELD
9901	801250309	KIT TORRETTE PLASTICA	PLASTIC M/D HEAD
0911	450310	TORRETTE PLASTICA	PLASTIC M/D HEAD

[illegible]



Il disegno è realizzato con tutti i particolari ma solo quelli codificati sono forniti come ricambi. L'Azienda si riserva la facoltà di apportare modifiche senza preavviso.



Via per Carpi n°9 - 42015 Correggio (RE) ITALY  
Tel. ++39 0522 639111 - Fax ++39 0522 639150  
[www.corgi.com](http://www.corgi.com) - [info@corgi.com](mailto:info@corgi.com)

The drawing shows all parts but only the coded parts are supplied as spares. The Company reserves the right to make modifications without prior notice.

**COMIM** - Cod. 4-100548E 11\_2013.