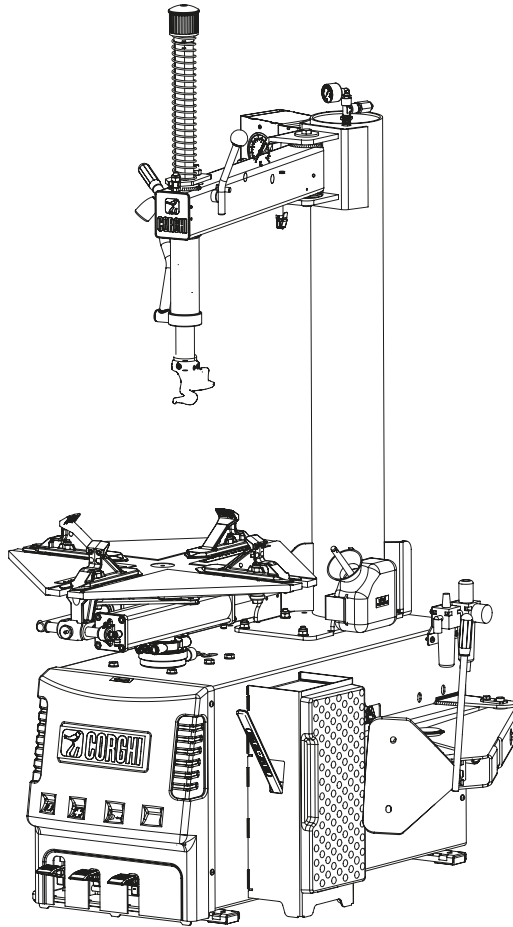


# A9830 HP

Pezzi di ricambio / Spare parts list



Code: 4-123299

Production date: 06 / 2021



[www.corghi.com](http://www.corghi.com) - [info@corghi.com](mailto:info@corghi.com)

**I**

**Sul presente documento sono stati evidenziati con colore grigio i ricambi consigliati e indicati in grassetto i codici che sono variati rispetto a quelli riportati nella precedente versione del 11/17**

**EN**

**In this document, the recommended spare parts have been highlighted in gray, while in bold you find those codes which are different if compared with the previous version dated 11/17**

**DE**

**Im vorliegenden Dokument wurden die empfohlenen Ersatzteile in grauer Farbe hervorgehoben; die Teilenummern in Fettdruck haben sich bezugnehmend auf die vorherige Version vom 11/17 geändert.**

**FR**

**Dans ce document, les pièces de rechange préconisées sont soulignées en gris, tandis que les références différentes par rapport à la version précédente du 11/17 sont en gras**

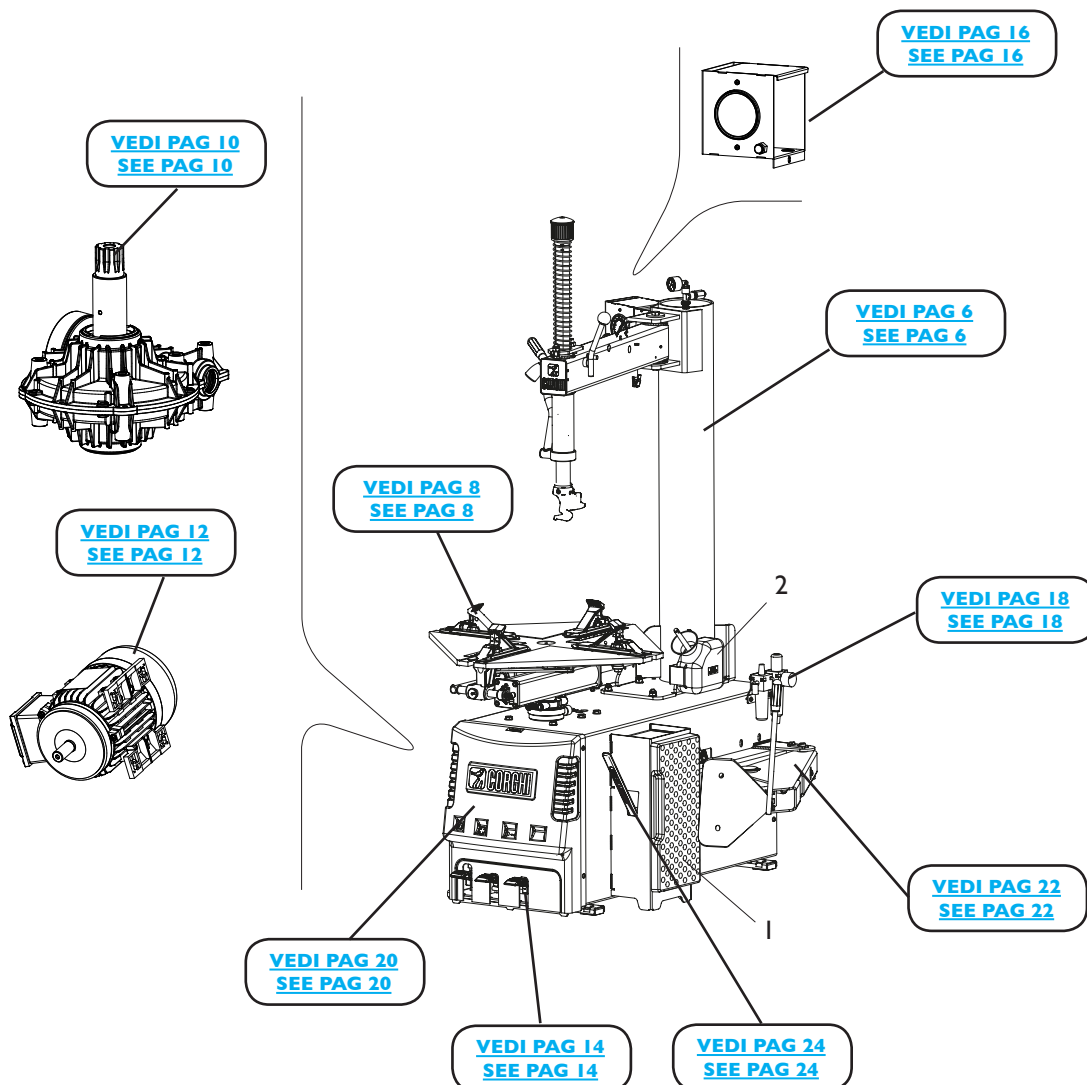
# SOMMARIO

# CONTENTS

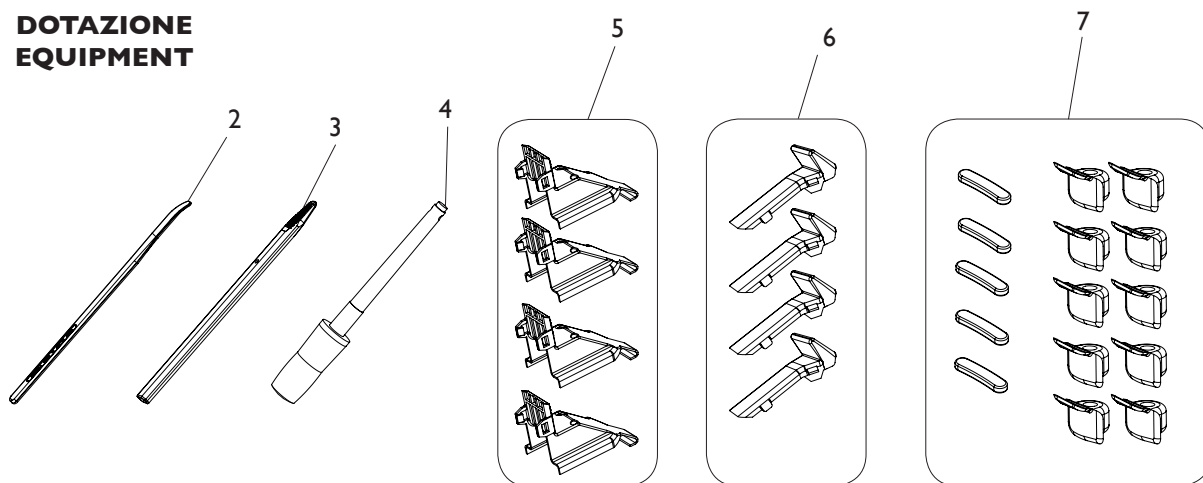
COMPLESSIVO A9830 HP	
A9830 HP OVERALL.....	4
GRUPPO BRACCIO OPERANTE	
OPERATING ARM GROUP .....	6
GRUPPO AUTOCENTRANTE 10-26"	
TURNTABLE GROUP 10-26" .....	8
GRUPPO RIDUTTORE	
GEARBOX GROUP.....	10
IMPIANTO ELETTRICO	
ELECTRICAL SYSTEM .....	12
GRUPPO PEDALIERA	
PEDAL GROUP .....	14
GRUPPO GONFIAGGIO HP	
HP INFLATION GROUP .....	16
GRUPPO FILTRO	
FILTER GROUP .....	18
GRUPPO CASSONE	
FRAME GROUP .....	20
GRUPPO STALLONATORE	
BEAD BREAKING GROUP .....	22
ACCESSORI	
ACCESSORIES.....	24

# COMPLESSIVO A9830 HP

## A9830 HP OVERALL

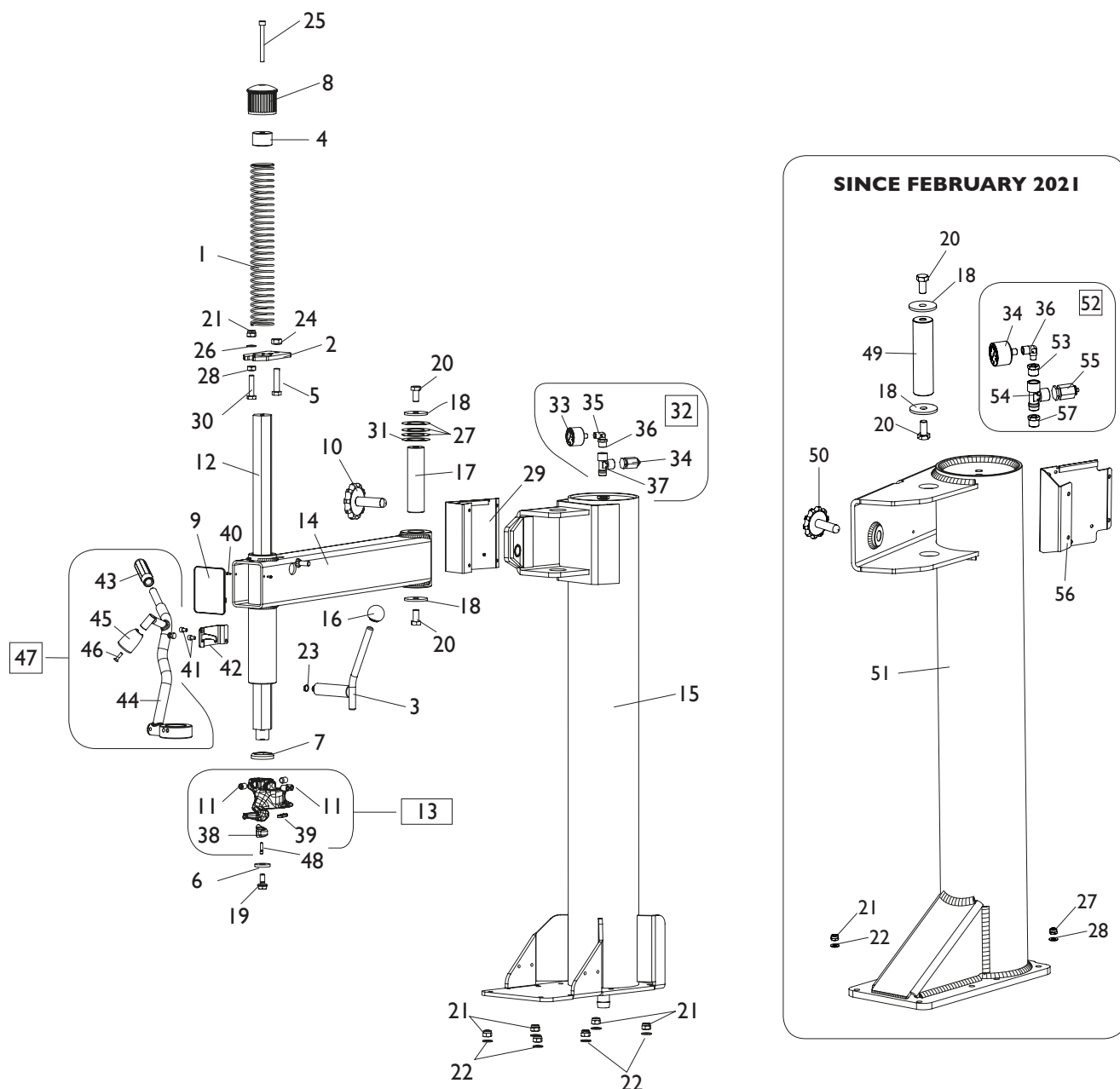


### DOTAZIONE EQUIPMENT



Rif. Ref.	Codice Code	Descrizione	Description
1	4-401740	APPOGGIO CERCHIO	RIM SUPPORT
2	423405	CONTENITORE	LUBE BUCKET
3	4-401081	<b>PROTEZIONE LEVA</b>	<b>LEVER PORTECTION</b>
4	415248	<b>PENNELLO</b>	<b>BRUSH</b>
5	5-101528	<b>KIT 4 PROTEZIONI ESTERNE</b>	<b>EXTERNAL PROTECTION KIT (4 PZ)</b>
6	5-101526	<b>KIT 4 PROTEZIONI INTERNE</b>	<b>INTERNAL PROTECTION KIT (4 PZ)</b>
7	5-101563	<b>KIT 15 NSERTI TORRETTA</b>	<b>HEAD INSERTS KIT (15 PZ)</b>

# GRUPPO BRACCIO OPERANTE OPERATING ARM GROUP

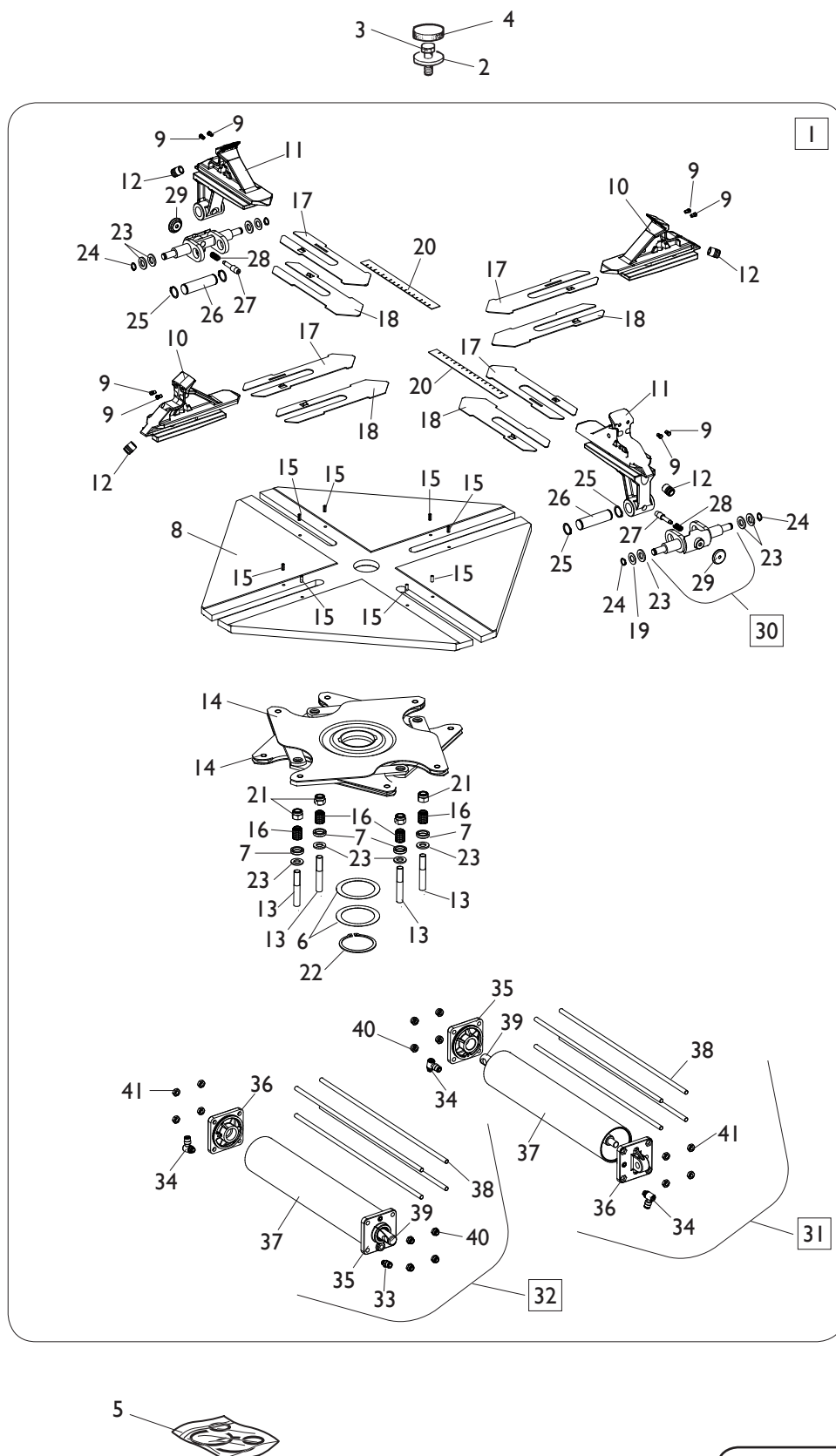


Ref.	Code	Descrizione	Description
1	440341	MOLLA D.44,5X3,2X532	SPRING D.44,5X3,2X532
2	341001	PIASTRA BLOCCAGGIO VERTICALE	VERTICAL LOCKING PLATE
3	223877	LEVA CON ECCENTRICO	LEVER
4	346273	PIASTRINA PER NOTTOLINO	PLATE
5	341249	VITE SPECIALE M12X50	SPECIAL SCREW M12X50
6	350194	RONDELLA D.12X33X5	WASHER D.12X33X5

Ref.	Code	Descrizione	Description
7	428681	ANELLO AMMORTIZZATORE	DAMPING RING
8	423907	POMOLO	KNOB
9	429971	COPERCHIO	COVER
10	441580	MANOPOLA M20X1,5	HANDLE M20X1,5
11	2-71537	VSTEI M12X16	CSK SCREW SOCKET M12X16
12	340343	BRACCIO VERTICALE	VERTICAL ARM
13	258458	TORRETTA COMPLETA	HEAD ASSEMBLY
14	238779	BRACCIO A BANDIERA	ORIZONTAL ARM
15	5-101130	PALO	ARM
16	3305241	MANOPOLA	HANDLE
17	323881	PERNO BRACCIO	ARM PIN
18	318216	RONDELLA D.12,5X50X4	WASHER D.12,5X50X4
19	350197	VITE SPECIALE FISS.TORRETTA M10X20	SPECIAL SCREW M10X20
20	2-01225	VTE M12X25	HEXAGON HEAD SCREW M12X25
21	2-01019	DADO ES.A. M10	AUTOLOCKING HEXAGON NUT M10
22	2-00213	RONDELLA D.10	WASHER D.10
23	2-00025	SEEGER D.12	SEEGER D.12
24	2-00153	DADO ES. M12	HEXAGON NUT M12
25	2-01312	VTCEI 1/2F M8X80	HEXAGON SOCKET HEAD SCREW 1/2F M8X80
26	2-02270	MOLLA TAZZA D.10,2X20X1.1	SPRING D.10,2X20X1.1
27	331087	RONDELLA D.36,5X60X0,5	WASHER D.36,5X60X0,5
28	2-00152	DADO ES. M10	HEXAGON NUT M10
29	338808	SUPPORTO SCATOLA GONFIAGGIO	INFLATION BOX SUPPORT
30	2-00382	VTE M10X45	HEXAGON HEAD SCREW M10X45
31	4-115325	RONDELLA D.36,5X60X0,2	WASHER D.36,5X60X0,2
32	241608	GRUPPO MANOMETRO	GAUGE ASSEMBLY
<b>*32</b>	<b>5-107617</b>	<b>GRUPPO MANOMETRO (ASME/CRN)</b>	<b>GAUGE ASSEMBLY (ASME/CRN)</b>
33	3-00488	MANOMETRO D.40 1/8 0-12 BAR/PSI	PRESSURE GAUGE D.40 1/8 0-12 BAR/PSI
<b>*33</b>	<b>3-03520</b>	<b>MANOM. D.40 25 BAR</b>	<b>PRESS. GAUGE D.40 25 BAR</b>
34	3-00356	LIMITATORE DI PRESSIONE	VALVE
<b>*34</b>	<b>3-03519</b>	<b>LIM. DI PRESS. 11 BAR (ASME/CRN)</b>	<b>VALVE 11 BAR (ASME/CRN)</b>
35	3-00138	RACCPN-L G1/8	L-FITTING G1/8
36	3-00271	RACCPN-G3/8-1/8F	FITTING G3/8-1/8F
37	3-00131	RACCPN-TL-G3/8CG-FF	TL-FITTING G3/8CG-FF
38	4-104729	INSERTO GIALLO	YELLOW INSERT
39	4-104730	INSERTO GIALLO	YELLOW INSERT
40	2-00641	VATBIC D.2,9X9,5	SCREW D.2,9X9,5
41	2-00308	VTCEI M6X10	HEXAGON SOCKET HEAD SCREW M6X10
42	342828	GUIDA LEVA	LEVER GUIDE
43	425219	MANOPOLA	HANDLE
44	242725	LEVA PREMITALLONE	LEVER
45	440600	TESTINA	ROLLER
46	2-01957	VTSPei M5X20	SCREW M5X20
47	254901	LEVA COMPLETA	LEVER ASSEMBLY
48	342051	PERNO	PIN
<b>49</b>	<b>4-141128</b>	<b>PERNO BRACCIO</b>	<b>ARM PIN</b>
<b>50</b>	<b>3-01577</b>	<b>MANOPOLA</b>	<b>HANDLE</b>
<b>51</b>	<b>5-125959/00</b>	<b>PALO</b>	<b>ARM</b>
<b>52</b>	<b>5-106875</b>	<b>GRUPPO MANOMETRO</b>	<b>GAUGE ASSEMBLY</b>
<b>53</b>	<b>3-00269</b>	<b>RACCPN-M-F G1/4-G1/8</b>	<b>FITTING G1/4-G1/8</b>
<b>54</b>	<b>3-00286</b>	<b>RACCPN-T-G1/4</b>	<b>T-FITTING G1/4</b>
<b>55</b>	<b>3-01573</b>	<b>LIMITATORE DI PRESSIONE</b>	<b>VALVE</b>
<b>56</b>	<b>4-141129</b>	<b>SUPPORTO SCATOLA GONFIAGGIO</b>	<b>INFLATION BOX SUPPORT</b>
<b>57</b>	<b>3-00082</b>	<b>RACCPN-D-G1/4C</b>	<b>D-FITTING-G1/4C</b>

**\* Solo per Canada**  
**Only for Canada**

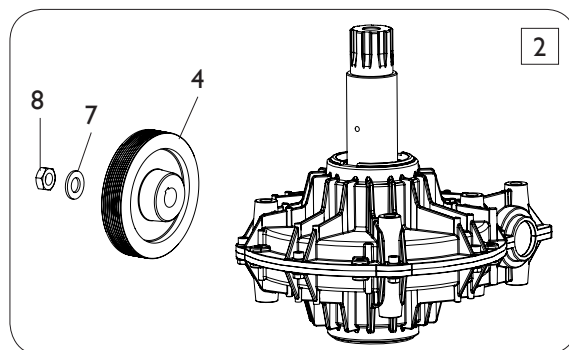
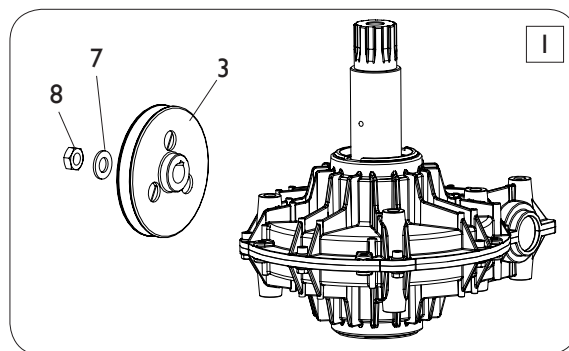
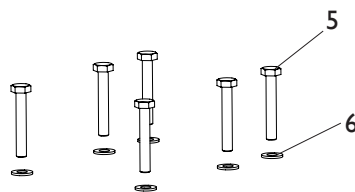
# GRUPPO AUTOCENTRANTE 10-26" TURNTABLE GROUP 10-26"



[TORNA AL COMPLESSIVO](#)  
[RETURNS TO OVERALL](#)

Ref.	Code	Descrizione	Description
1	5-100489	GRUPPO AUTOCENTRANTE <b>H.P.</b>	TURNTABLE <b>H.P.</b> ASSEMBLY
2	323363	RONDELLA D.16,5X48X10	WASHER D.16,5X48X10
3	2-01216	VTE M16X1,5X35	HEXAGON HEAD SCREW M16X1,5X35
4	426514	TAPPO TONDO	ROUND CAP
5	238548	KIT GUARNIZIONI CILINDRI	CYLINDERS SEAL KIT
6	455082	RONDELLA D.65X85X0,4	WASHER D.65X85X0,4
7	437964	RONDELLA D.18,5X25X5	WASHER D.18,5X25X5
8	4-101655	PIATTO AUTOCENTRANTE	TURNTABLE PLATE
9	339146	PUNTA DI BLOCCAGGIO	LOCKING PEAK
10	5-100485	APP. SCORREVOLE TRAINATO	RIM SUPPORT
11	5-100488	APP. SCORREVOLE TRAINANTE	RIM SUPPORT
12	441100	RACCORDO T.10	FITTING T.10
13	2-02199	VTE 1/2F M12X1,25X75	HEXAGON HEAD SCREW 1/2F M12X1,25X75
14	4-101651	FLANGIA COMANDO BIELLE	FLANGE CONTROL RODS
15	2-01059	SPINA D.5X12	PLUG D.5X12
16	353803	BOCCOLA D.12X18X22,2	BUSHING D.12X18X22,2
17	4-101657	SLITTA COPRIASOLA	PLATE
18	4-101658	SLITTA COPRIASOLA	PLATE
19	428636	ROND D.12.3 x 22.8 x 1	WASHER D.12.3 x 22.8 x 1
20	4-101706	RIGHELLO MISURA POLLICI	RULER MEASUREMENT INCHES
21	2-02200	DADO ES.A. M12X1,25	AUTOLOCKING HEXAGON NUT M12X1,25
22	2-01283	ANELLO D.65	SEEGER D.65
23	2-00214	RONDELLA D.12	WASHER D.12
24	2-00025	SEEGER D.12	SEEGER D.12
25	2-71587	SEEGER D.20	SEEGER D.20
26	4-101442	PERNO	PIN
27	4-101444	INNESTO	CONNECTION
28	4-101422	MOLLA D.1,2X10X20	SPRING D.1,2X10X20
29	4-109834	POMOLO	KNOB
30	5-103522	KIT MANOVELLE + POMOLI (2PZ)	KNOB KIT (2 PIECES)
31	5-100357	CILINDRO DX D.70X351	RIGHT CYLINDER D.70X351
32	5-100356	CILINDRO SX D.70X351	LEFT CYLINDER D.70X304,5
33	3-02045	RACCPN-D- G1/8 T6 + O-RING	D-FITTING G1/8 WITH O-RING
34	3-02044	RACCPN-LO- G1/8 T6 + O-RING	LO-FITTING G1/8 WITH O-RING
35	5-105111	FLANGIA ANTERIORE D.70	FRONT FLANGE D.70
36	4-115948	FLANGIA POSTERIORE D.70	REAR FLANGE D.70
37	4-101083	CAMICIA D.70X385	LINER D.70X385
38	4-115964	TIRANTE D.7X415 M8	TIE ROD D.7X415 M8
39	4-115959	STELO D.20X437	STEM D.20X437
40	2-01137	DADO ES.A. M8	AUTOLOCKING HEXAGON NUT M8
41	2-00156	DADO ES. M8	HEXAGON NUT M8

# GRUPPO RIDUTTORE GEARBOX GROUP

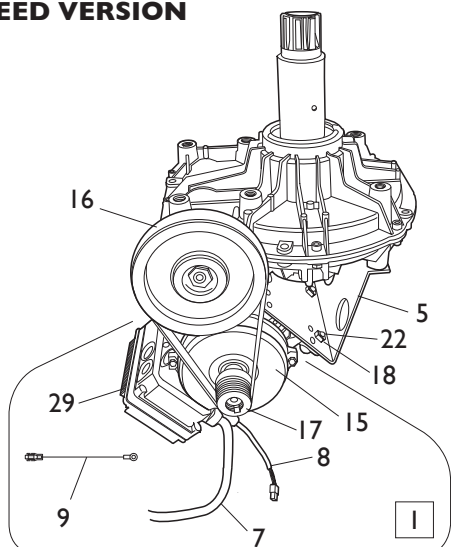


[TORNA AL COMPLESSIVO](#)  
[RETURNS TO OVERALL](#)

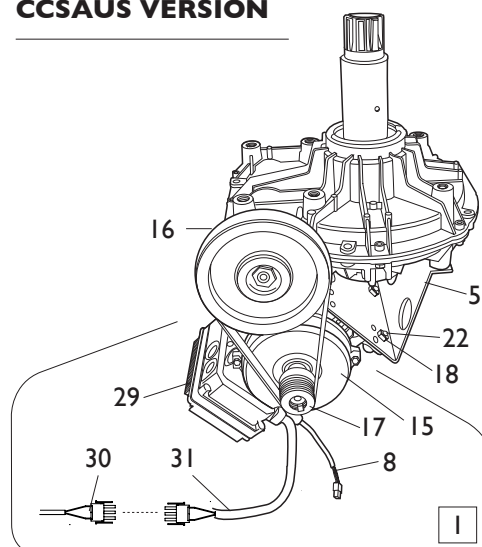
Rif. Ref.	Codice Code	Descrizione	Description
1	5-102647	RIDUTTORE <b>1 VELOCITA</b>	<b>1 SPEED</b> GEARBOX
2	5-102648	RIDUTTORE <b>2 VELOCITA</b>	<b>2 SPEED</b> GEARBOX
3	314344	PULEGGIA <b>1 VELOCITA</b>	<b>1 SPEED</b> PULLEY
4	339870	PULEGGIA <b>2 VELOCITA</b>	<b>2 SPEED</b> PULLEY
5	2-01046	VTE M10X55	HEXAGON HEAD SCREW M10X55
6	2-00213	RONDELLA D.10	WASHER D.10
7	2-00215	RONDELLA D.14	WASHER D.14
8	2-00941	DADO ES. M14	HEXAGON NUT M14

# IMPIANTO ELETTRICO ELECTRICAL SYSTEM

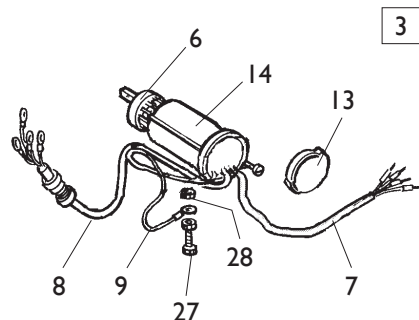
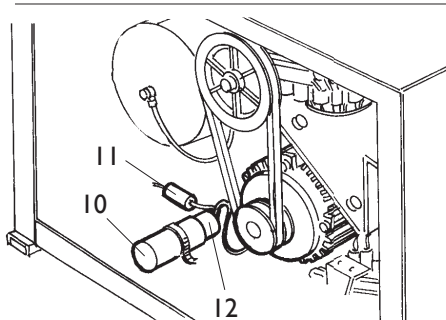
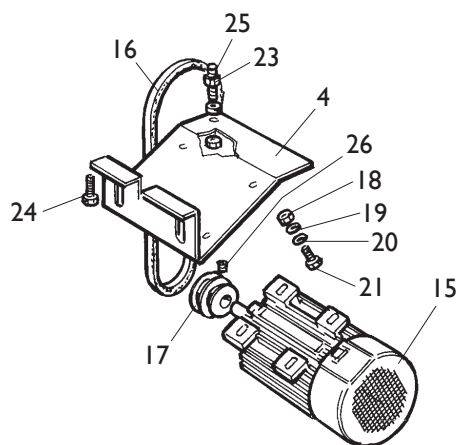
**VERSIONE DV  
2 SPEED VERSION**



**VERSIONE CCSAUS  
CCSAUS VERSION**



**VERSIONE Iph  
Iph VERSION**



[TORNA AL COMPLESSIVO](#)  
[RETURNS TO OVERALL](#)

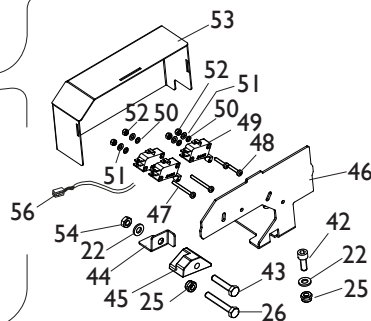
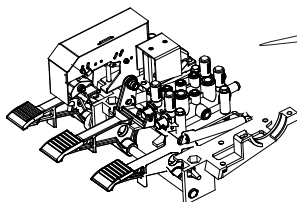
Rif. Ref.	Codice Code	Descrizione	Description
I	5-104986	MOTOINVERTER DV <b>230V/I/50-60HZ</b>	MOTOINVERTER 2 SPEED <b>230V/I/50-60HZ</b>
I	5-104995	MOTOINVERTER DV <b>115V/I/50-60HZ</b>	MOTOINVERTER 2 SPEED <b>115V/I/50-60HZ</b>
<b>I</b>	<b>5-107592</b>	<b>MOTOINV.ERTER 115V CCSAUS</b>	<b>MOTOINVERTER 115V CCSAUS</b>
3	5-103989	IMPIANTO ELETTRICO <b>115V Iph</b>	ELECTRICAL SYSTEM <b>115V Iph</b>
4	334768	CULLA MOTORE	MOTOR SUPPORT
5	4-109965	CULLA MOTOINVERTER DV	MOTOINVERTER SUPPORT
6	5-102742	INVERTITORE <b>Iph</b>	INVERTER <b>Iph</b>
7	447801	CAVO RETE <b>115V Iph</b>	SUPPLY CABLE <b>115V Iph</b>
7	4-111586	CAVO RETE <b>MOTOINVERTER</b>	SUPPLY CABLE <b>MOTOINVERTER</b>
8	249590	CAVO MOTORE <b>115V Iph</b>	MOTOR CABLE <b>115V Iph</b>
8	4-109895	CAVO COMANDI <b>MOTOINVERTER</b>	COMMAND CABLE <b>MOTOINVERTER</b>
<b>8</b>	<b>4-121510</b>	<b>CAVO COMANDI CCSAUS</b>	<b>COMMAND CABLE CCSAUS</b>
9	249601	CAVO DI MASSA L.350mm <b>115V Iph</b>	U-BOLT L.350mm <b>115V Iph</b>
9	4-101659	CAVO DI MASSA L.400mm <b>MOTOINV.</b>	U-BOLT L.400mm <b>MOTOINVERTER</b>
10	430750	CAPPELLOTTO D.45 <b>115V Iph</b>	CAP NUT <b>115V Iph</b>
11	430770	RESISTENZA 330K OHM	RESISTANCE 330K OHM
12	4-112706	CONDENSATORE 50mf <b>115V Iph</b>	CAPACITOR 50mf <b>115V Iph</b>
13	430991	COPERCHIO PROTEZIONE	LID
14	432065	PROTEZIONE INVERTITORE	INVERTER COVER
15	4-112454	MOTORE <b>115V Iph</b>	MOTOR <b>115V Iph</b>
15	4-113412	MOTOINVERTER (NO SK) <b>230/115V</b>	MOTOINVERTER (NO P.C. BOARD) <b>230/115V</b>
<b>15</b>	<b>4-121508</b>	<b>MOTOINVERTER (NO SK) CCSAUS</b>	<b>MOTOINVERTER (NO P.C. BOARD) CCSAUS</b>
16	3-00573	CINGHIA MOTORE <b>2V</b>	MOTOR BELT <b>2 SPEED</b>
16	3-10068	CINGHIA MOTORE <b>Iph 50hz</b>	MOTOR BELT <b>Iph 50hz</b>
16	3-00555	CINGHIA MOTORE <b>Iph 60hz</b>	MOTOR BELT <b>Iph 60hz</b>
17	331067	PULEGGIA MOTORE <b>Iph</b>	MOTOR PULLEY <b>Iph</b>
17	4-102397	PULEGGIA <b>MOTOINVERTER</b>	PULLEY FOR <b>MOTOINVERTER</b>
18	421349	DADO ES.A. M8	AUTOLOCKING HEXAGON NUT M8
19	339208	RONDELLA D.8,5X22X4	WASHER D.8,5X22X4
20	2-00212	RONDELLA D.8	WASHER D.8
21	2-00374	VTE M8X25	HEXAGON HEAD SCREW M8X25
22	2-00375	VTE M8X30	HEXAGON HEAD SCREW M8X30
23	2-00152	DADO ES. M10	HEXAGON NUT M10
24	2-00328	VTCEI M10X20	HEXAGON SOCKET HEAD SCREW M10X20
25	455920	VSTEI SPECIALE M10X60	SPECIAL SCREW M10X60
26	2-01091	VSTEI M6X5	CSK SCREW SOCKET M6X5
27	2-00605	VITE M4X10	SCREW M4X10
28	2-00143	DADO ES. M4	HEXAGON NUT M4
29	4-115396	SK MOTOINVERTER <b>230V</b>	MOTOINVERTER P.C. BOARD <b>230V</b>
29	4-113414	SK MOTOINVERTER <b>115V</b>	MOTOINVERTER P.C. BOARD <b>115V</b>
<b>29</b>	<b>4-121512</b>	<b>SK MOTOINVERTER CCSAUS</b>	<b>MOTOINVERTER P.C. BOARD CCSAUS</b>
<b>30</b>	<b>4-121502</b>	<b>CAVO ALIM. CCSAUS L.3950mm</b>	<b>SUPPLY CABLE CCSAUS L.3950mm</b>
<b>31</b>	<b>4-121511</b>	<b>CAVO ALIM. CCSAUS L.3700mm</b>	<b>SUPPLY CABLE CCSAUS L.3700mm</b>

# GRUPPO PEDALIERA PEDAL GROUP

55

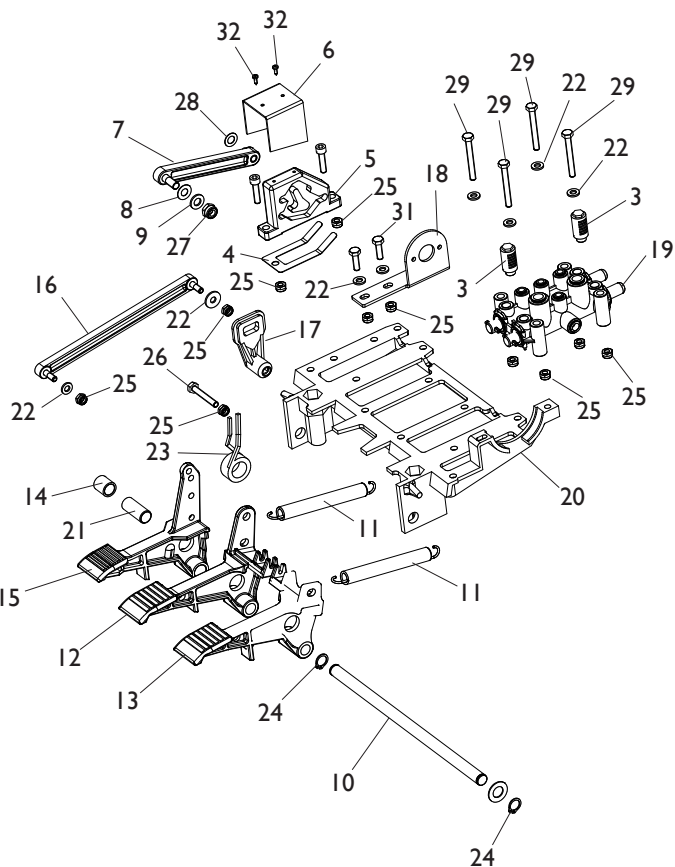
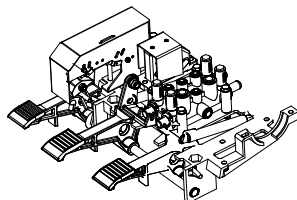
**VERSIONE CCSAUS**  
**CCSAUS VERSION**

**SOLO X CANADA**  
**ONLY FOR CANADA**



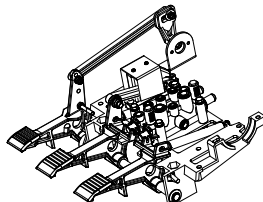
41

**VERSIONE DV**  
**2 SPEED VERSION**



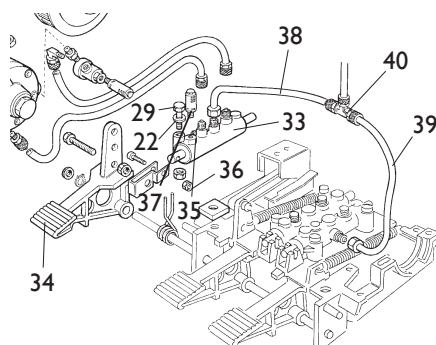
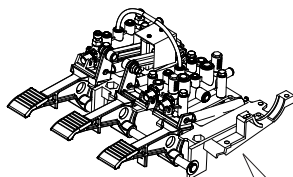
1

**VERSIONE IV**  
**I SPEED VERSION**



2

**VERSIONE PNEUMATICA**  
**PNEUMATIC VERSION**

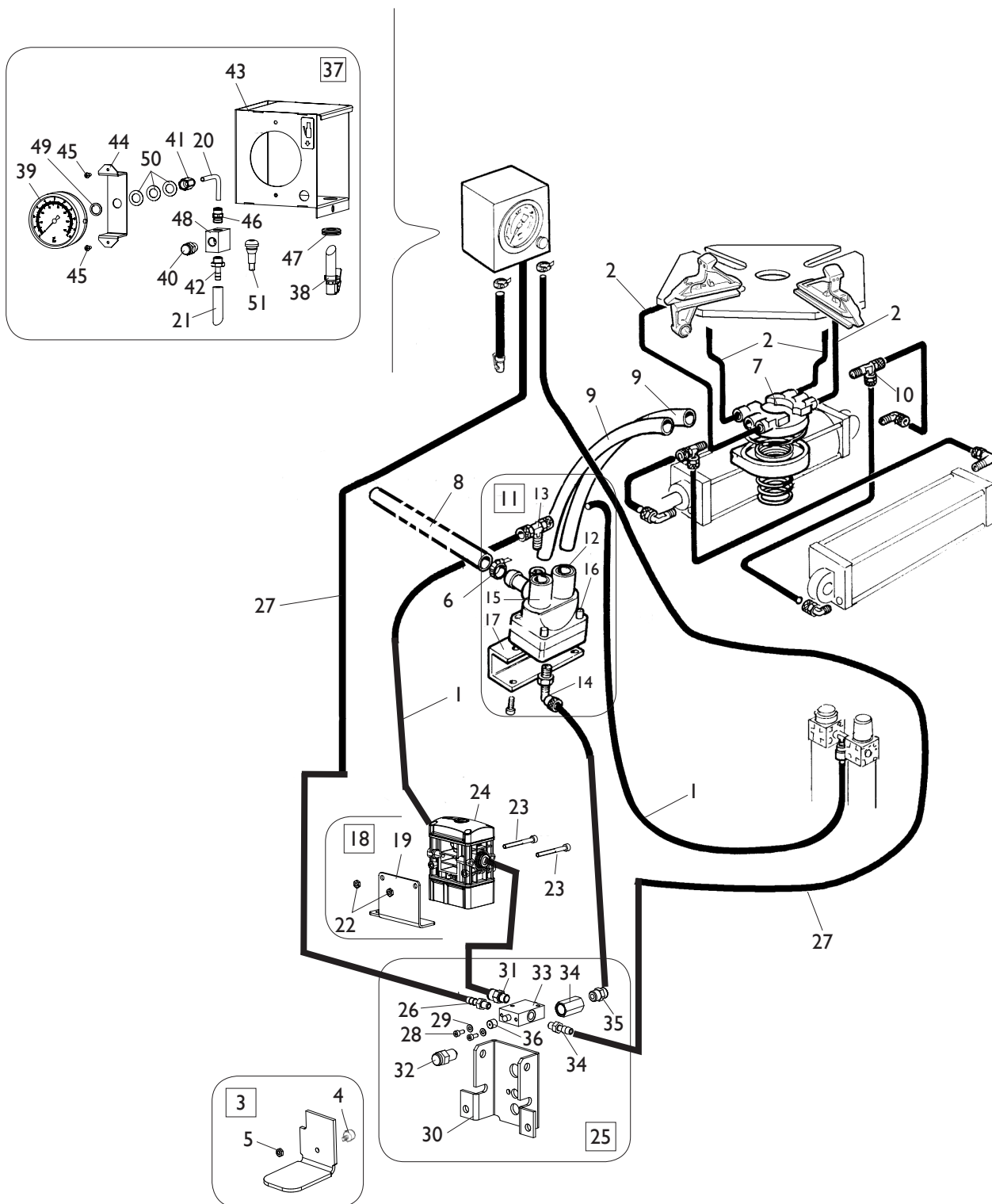


[TORNA AL COMPLESSIVO](#)  
[RETURNS TO OVERALL](#)

Ref.	Code	Descrizione	Description
1	5-106269	PEDALIERA <b>I VELOCITA</b>	PEDAL ASSEMBLY <b>I SPEED</b>
2	270526	PEDALIERA <b>PNEUMATICA</b>	PEDAL ASSEMBLY <b>PNEUMATIC</b>
3	3-00183	SILENZIATORE IN PLASTICA 1/8	PLASTIC SILENCER 1/8
4	325019	BALESTRA A FORCELLA	LEAF SPRING
5	425020	CAMMA DOPPIA	DOUBLE CAM
6	325018	CAVALLOTTO GUIDA BIELLE	U-BOLT
7	425014	BIELLA CAMMA	CAM ROD
8	2-02247	RONDELLA D.8,4X15	WASHER D.8,4X15
9	309358	RONDELLA D.8X16,5X0,5	WASHER D.8X16,5X0,5
10	325583	PERNO PEDALIERA	PEDAL PIN
11	410628	MOLLA D.14X2X105	SPRING D.14X2X105
12	325031	PEDALE AUTOCENTRANTE	TURNTABLE PEDAL
13	325032	PEDALE STALLONATORE	BEAD BRAKE PEDAL
14	325050	DISTANZIALE	SPACER
15	5-102714	PEDALE INVERTITORE	INVERTER PEDAL
16	429009	BIELLA	ROD
17	404283	LEVA INVERTITORE	INVERTER LEVER
18	334758	SUPPORTO INVERTITORE	INVERTER SUPPORT
19	5-102739	RUBINETTO DOPPIO	DOUBLE VALVE
20	524273	SUPPORTO COMANDI	COMMAND SUPPORT
21	452011	BOCCOLA D.12X14X33,5	BUSH D.12X14X33,5
22	2-00211	RONDELLA D.6	WASHER D.6
23	4-109664	MOLLA COMANDO INTERRUTORE	INVERTER SPRING
24	2-00025	SEEGER D.12	SEEGER D.12
25	2-01979	DADO ES.A. M6	AUTOLOCKING HEXAGON NUT M6
26	2-00366	VTE M6X40	HEXAGON HEAD SCREW M6X40
27	2-01137	DADO ES.A. M8	AUTOLOCKING HEXAGON NUT M8
28	2-00212	RONDELLA D.8	WASHER D.8
29	2-00411	VTE 1/2F M6X50	HEXAGON HEAD SCREW 1/2F M6X50
30	2-00312	VTCEI M6X25	HEXAGON SOCKET HEAD SCREW M6X25
31	2-00362	VTE M6X20	HEXAGON HEAD SCREW M6X20
32	2-01272	VATBIC D.2,9X9,5	SCREW D.2,9X9,5
33	5-102740	RUBINETTO SINGOLO	SINGLE VALVE
34	252030	PEDALE PNEUMATICO	PNEUMATIC PEDAL
35	331381	BIELLA	ROD
36	2-01018	DADO ES.A. M4	AUTOLOCKING HEXAGON NUT M4
37	2-00291	VTCEI M4X20	HEXAGON SOCKET HEAD SCREW M4X20
38	321200	TUBO RYLSAN 8X1 L.300mm	RYLSAN HOSE 8X1 L.220mm
39	332142	TUBO RYLSAN 8X1 L.160mm	RYLSAN HOSE 8X1 L.120mm
40	3-00112	RACCPN-T T8/6	T-FITTING T8/6
41	5-101614	PEDALIERA <b>2 VELOCITA</b>	PEDAL ASSEMBLY <b>2 SPPED</b>
42	2-00309	VTCEI M6X16	HEX. SOCKET HEAD SCREW M6X16
43	2-00364	VTE M6X30	HEXAGON HEAD SCREW M6X30
44	4-105045	STAFFA ANTIROTAZIONE	ANTIROTATING PLATE
45	461535	BLOCCHETTO MICRO	MICRO BLOCK
46	4-105044	SUPPORTO MICRO	MICRO SUPPORT
47	2-00578	VTCIC M3X30	SCREW M3X30
48	2-00576	VTCIC M3X20	SCREW M3X20
49	440874	MICRO 16A 250V	MICRO 16A 250V
<b>49</b>	<b>3-04603</b>	<b>MICRO 8A 250V CCSAUS (SINCE MAY 2021)</b>	<b>MICRO 8A 250V CCSAUS (SINCE MAY 2021)</b>
50	2-71547	ROSETTA D.3	WASHER D.3
51	2-00208	RONDELLA D.3	WASHER D.3
52	2-00124	DADO ES. M3	HEXAGON NUT M3
53	4-102402	COPERCHIO	COVER
54	2-00155	DADO ES. M6	HEXAGON NUT M6
<b>55</b>	<b>5-107620</b>	<b>PEDALIERA CCSAUS</b>	<b>PEDAL ASSEMBLY CCSAUS</b>
56	4-101693	CAVO 4X0,5 L.400mm	CABLE 4X0,5 L.400mm
<b>56</b>	<b>4-121504</b>	<b>CAVO CCSAUS L.400mm</b>	<b>CABLE CCSAUS L.400mm</b>

# GRUPPO GONFIAGGIO HP

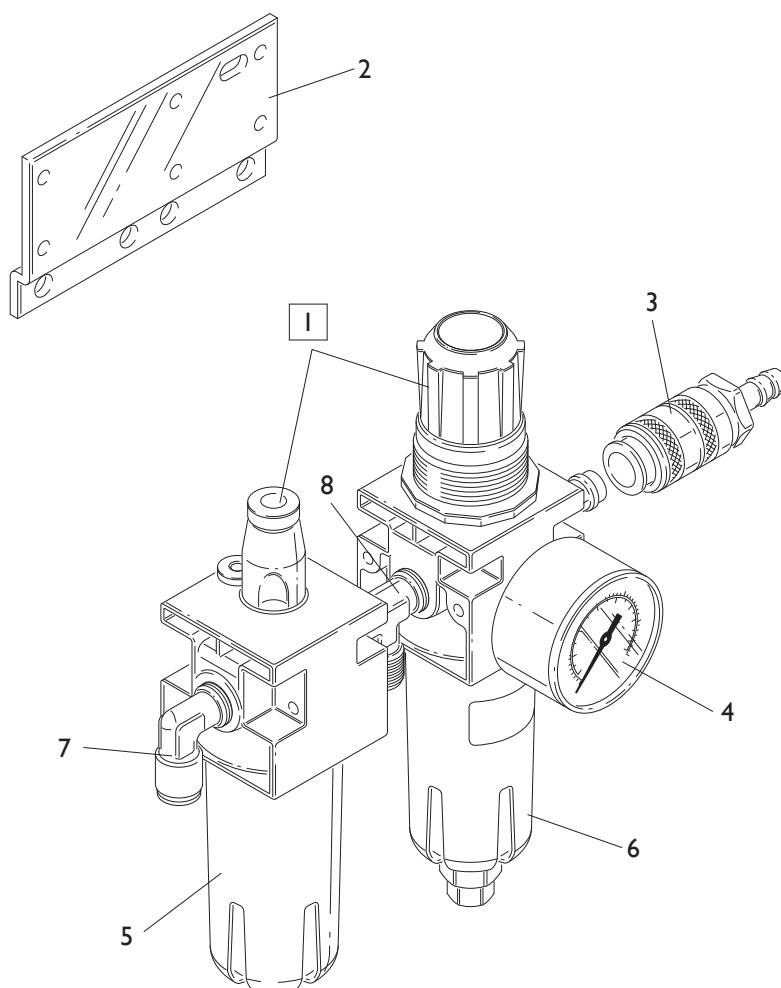
## HP INFLATION GROUP



**TORNA AL COMPLESSIVO**  
**RETURNS TO OVERALL**

Ref.	Code	Descrizione	Description
1	1-01683	TUBO RYLSAN D8X1	RYLSAN HOSE D.8X1
2	1-04223	TUBO POLIUR.ARIA D.10X1,25	HOSE D.10X1,25
3	252625	PEDALE GONFIAGGIO	INFLATION PEDAL
4	452624	ANTIVIBRANTE M/F 20X11 M6X9	VIBRATION DAMPING 20X11 M6X9
5	2-00150	DADO ES. M6	HEXAGON NUT M6
6	403751	FASCETTA D.8-16	FASTEN D.8-16
7	241841	RACCORDO GIREVOLE <b>H.P.</b>	ROTATING JOINT <b>H.P.</b>
8	346266	TUBO IN GOMMA 25X37 18ATM. L.630mm	RUBBER HOSE 25X37 L.630mm
9	342289	TUBO RYLSAN TRASP. 14X1 L.650mm	RYLSAN HOSE 14X1 L.650mm
10	3-00117	RACCPN-TL G1/8C T6/4	TL-FITTING G1/8C T6/4
11	242290	VALVOLA DI GONFIAGGIO <b>H.P.</b>	INFLATION VALVE <b>H.P.</b>
12	3-02945	CARTUCCIA	CARTRIGE
13	4-402799	RACCPN-TO G1/4C T8	T-FITTING G1/4C T8
14	4-402798	RACCPN-LO G1/4C T8	L-FITTING G1/4C T8
15	243020	VALVOLA	VALVE
16	2-94006	VTCEI 1/2F M6X40	HEXAGON SOCKET HEAD SCREW 1/2F M6X40
17	342286	STAFFA PORTA VALVOLA	VALVE BRACKET
18	5-106703	LIMITATORE GONFIAGGIO CPL.	VALVE ASSEMBLY
19	4-119680	SUPPORTO VALVOLA	VALVE SUPPORT
20	315268	TUBO RYLSAN 6X1 L.260mm	RYLSAN HOSE 6X1 L.260mm
21	354410	TUBO 18 ATM. D.6-14 L.3150mm	RUBBER HOSE D.6-14 L.3150mm
22	2-02804	DADO ES. M4	HEXAGON NUT M4
23	2-00851	VTCEI M4X40	HEXAGON SOCKET HEAD SCREW M4X40
24	3-03313	LIMITATORE DI GONFIAGGIO	VALVE
25	5-105676	GRUPPO DI GONFIAGGIO CPL.	INFLATION ASSEMBLY
26	3-00004	RACCPN ATTACCO RESCA 7 G1/8	RESCA FITTING G1/8
27	352614	TUBO IN GOMMA L.1900mm	RUBBER HOSE L.1900mm
28	2-00289	VTCEI M4X10	HEXAGON SOCKET HEAD SCREW M4X10
29	2-00209	RONDELLA D.4	WASHER D.4
30	352968	SUPPORTO VALVOLA	VALVE SUPPORT
31	3-00464	RACCPN-D G1/8G T8	D-FITTING G1/8G T8
32	235463	VALVOLA SGONFIAGGIO	DEFLATION VALVE
33	3-00365	VALVOLA 3/2 1/8	VALVE 3/2 1/8
34	338576	DISTANZIALE 17X32	SPACER 17X32
35	3-00460	RACCPN-D G1/4 T6	D-FITTING G1/4 T6
36	352619	CAPPELLOTTO DISTANZIALE	SPACER
37	5-108303	SCATOLA GONFIAGGIO <b>BAR/PSI</b>	INFLATION BOX ASSEMBLY <b>BAR/PSI</b>
38	5-100129	TUBO GONFIAGGIO	INFLATION HOSE
39	3-00489	MANOMETRO <b>BAR/PSI</b>	PRESSURE GAUGE <b>BAR/PSI</b>
40	235463	VALVOLA SGONFIAGGIO	DEFLATION VALVE
41	3-00261	RACCPN-D G1/4F T6	D-FITTING G1/4F T6
42	3-00007	RACCPN ATTACCO RESCA 7 G1/4	RESCA FITTING G1/4
43	234171	SCATOLA MANOMETRO	GAUGE BOX
44	353537	SUPPORTO MANOMETRO	PRESSURE GAUGE SUPPORT
45	2-71485	VTABIC D.3,9X13	SCREW D.3,9X13
46	3-00460	RACCPN-D G1/4 T6	D-FITTING G1/4 T6
47	454412	PASSACAVO D.14X22X1,5	RUBBER D.14X22X1,5
48	352586	BLOCCHETTO	BLOCK
49	3-00449	RONDELLA 1/4	WASHER 1/4
50	301109	RONDELLA D.13X22X0,6	WASHER D.13X22X0,6
51	3-01568	VALVOLA TUBLESS	TUBLESS VALVE

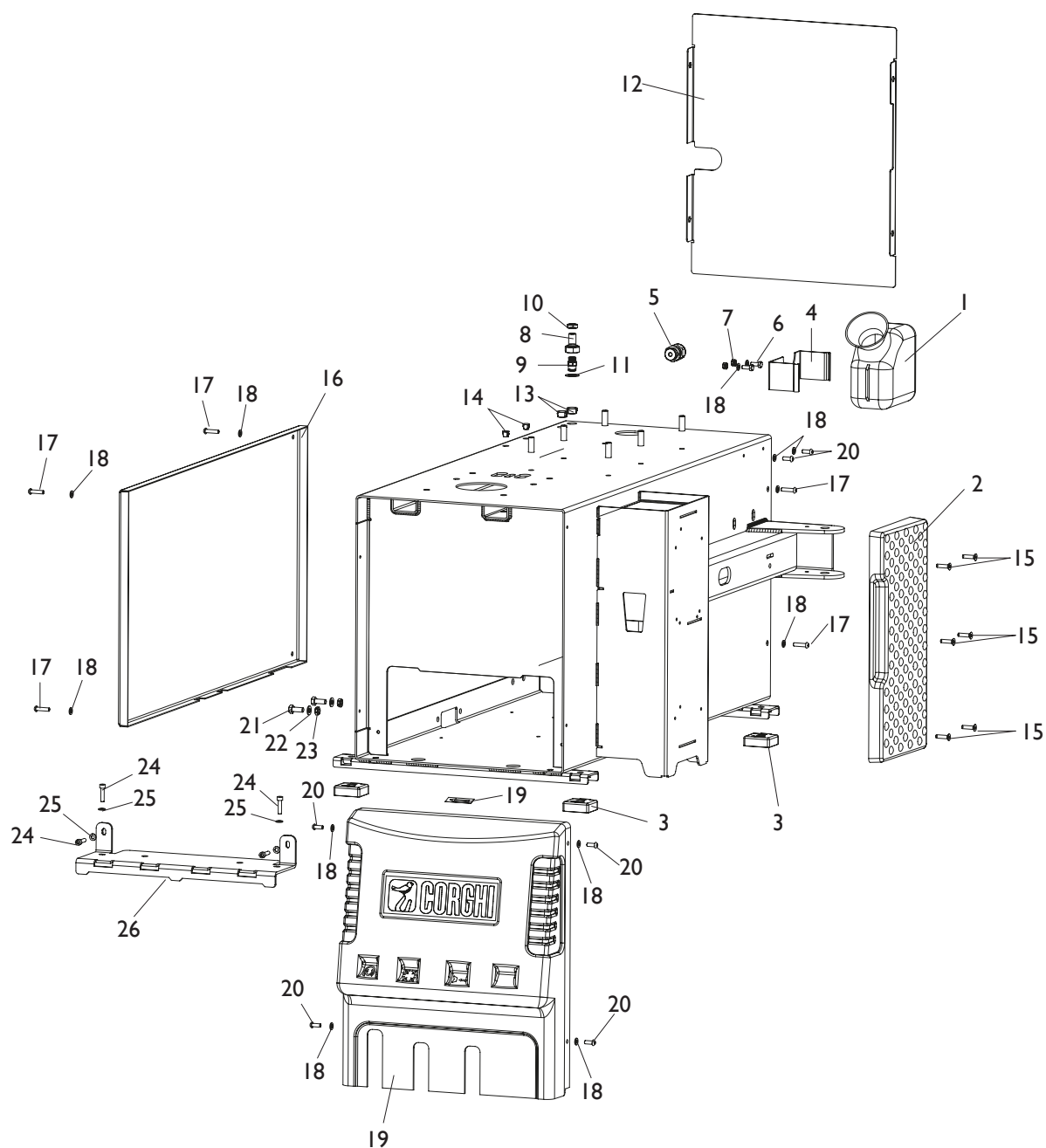
# GRUPPO FILTRO FILTER GROUP



[TORNA AL COMPLESSIVO](#)  
[RETURNS TO OVERALL](#)

Rif. Ref.	Codice Code	Descrizione	Description
1	456522	FILTRO CPL ( <b>MANOMETRO ESCLUSO</b> )	FILTER ASSEMBLY ( <b>GAUGE NOT INCLUDED</b> )
2	4-102273	STAFFA FILTRO	FILTER BRACKET
3	3-00257	RACCORDO RAPIDO	FITTING
4	3-00488	MANOMETRO D.40 1/8 0-12 BAR/PSI	PRESSURE GAUGE D.40 1/8 0-12 BAR/PSI
5	457511	BICCHIERE LUBRIFICATORE	LUBRICATOR BOWL
6	457512	BICCHIERE FILTRO	FILTER BOWL
7	3-00221	RACCPN-L G1/4C T8	L-FITTING G1/4C T8
8	3-00001	RACCPN-T G1/4 M/M	T-FITTING G1/4

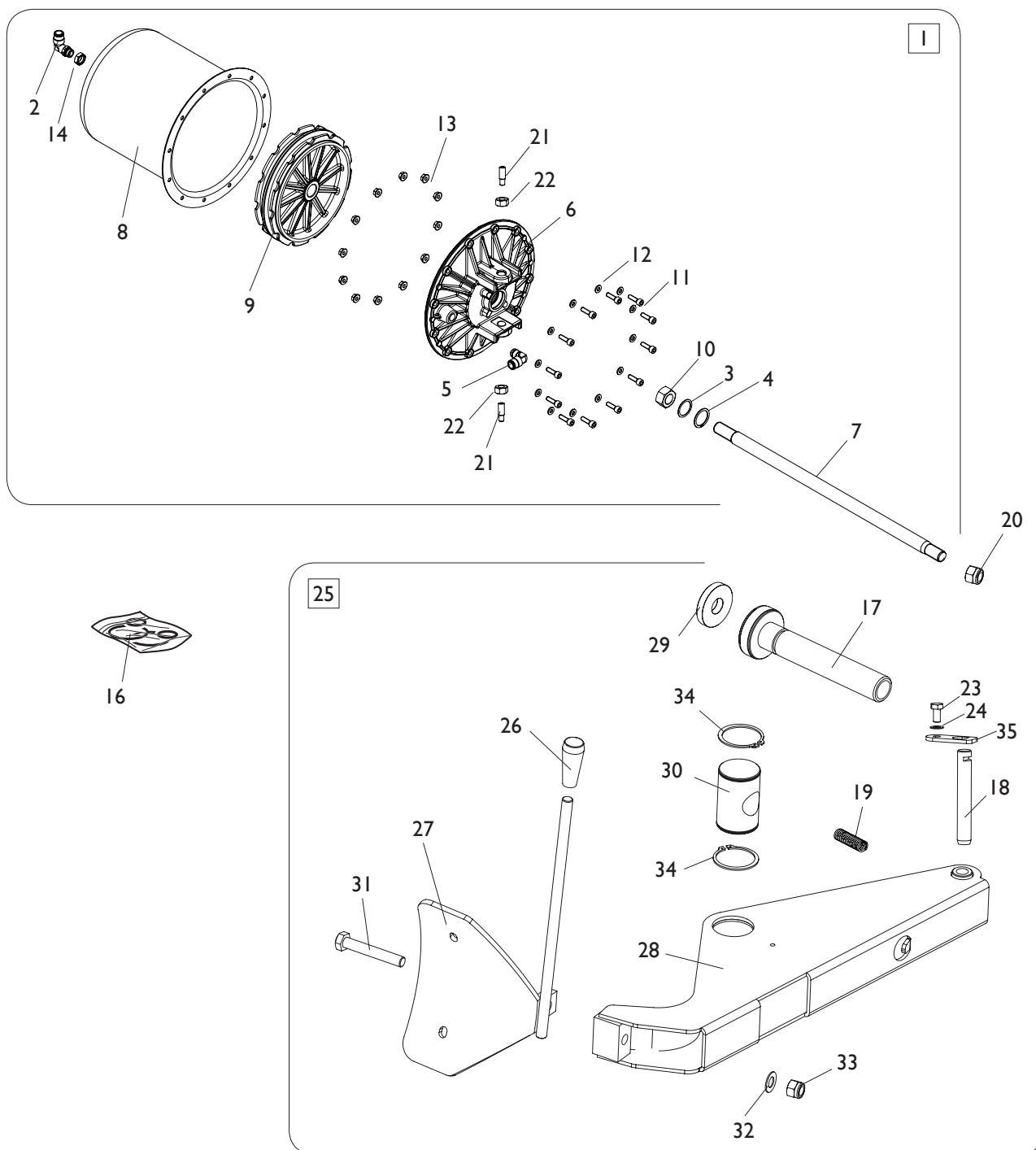
# GRUPPO CASSONE FRAME GROUP



[TORNA AL COMPLESSIVO](#)  
[RETURNS TO OVERALL](#)

Rif. Ref.	Codice Code	Descrizione	Description
1	423405	CONTENITORE	LUBE BUCKET
2	4-401740	APPOGGIO CERCHIO LUNGO	RIM SUPPORT
3	422019	PIEDE	FOOT
4	315522	SUPPORTO CONTENITORE GRASSO	SUPPORT
5	426542	PRESSACAVO PGI 6 D.9-14	PGI 6 D.9-14
6	2-01223	VTE M6X16	HEXAGON HEAD SCREW M6X16
7	2-00127	DADO M6	HEXAGON NUT M6
8	4-134036	RACCPN-D-PASSAPARETE-G1/4	D-FITTING-G1/4
9	3-80097	RACCPN-D-G1/4 GO-T8	D-FITTING-G1/4-T8
10	333524	DADO 1/4	NUT 1/4
11	451144	RONDELLA D.16X24X1	WASHER D.16X24X1
12	5-108318	CARTER POSTERIORE	REAR COVER
13	4213931	TAPPO TONDO D.16X9,2	CAP D.16X9,2
14	452570	TAPPO TONDO D.9,5X8,7	CAP D.9,5X8,7
15	2-01885	VTSPEI M6X25	CSK SCREW SOCKET M6X25
16	5-108320	COFANO + ADESIVI	COVER WITH LABELS
17	2-02570	VTBEI M6X25	SCREW M6X25
18	2-00211	RONDELLA D.6	WASHER D.6
19	5-108214	FRONTALE CON ADESIVI	FRONT COVER WITH LABELS
20	2-02155	VTBEI M6X16	SCREW M6X16
21	2-00373	VTE M8X20	HEXAGON HEAD SCREW M8X20
22	2-00212	RONDELLA D.8	WASHER D.8
23	2-00156	DADOES. M8	HEXAGON NUT M8
24	2-02808	VTCEI M6X25	HEXAGON SOCKET HEAD SCREW M6X25
25	2-02127	RONDELLA D.6,4X12,5X1,6	WASHER D.6,4X12,5X1,6
26	4-123272	SUPPORTO PEDALIERA	PEDAL SUPPORT

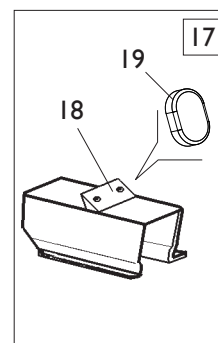
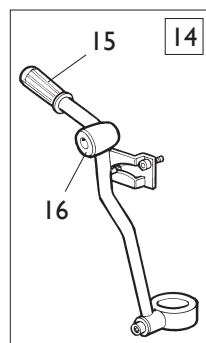
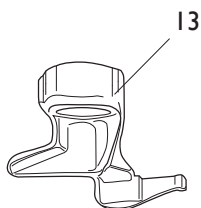
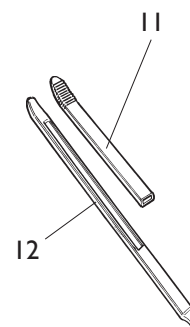
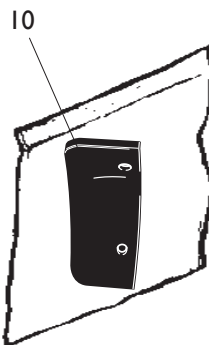
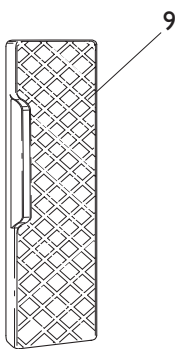
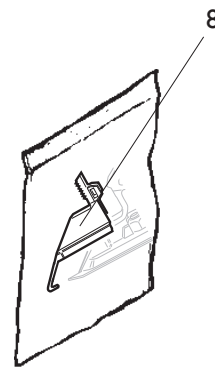
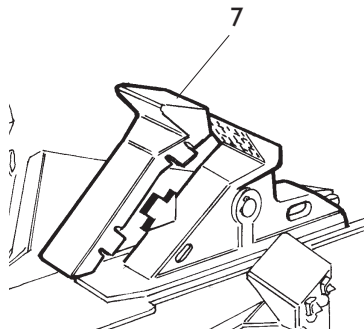
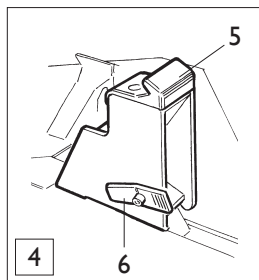
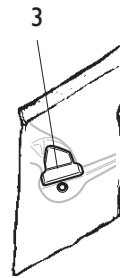
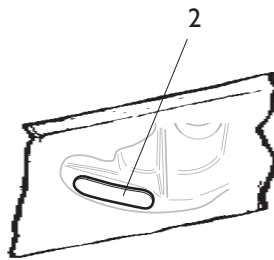
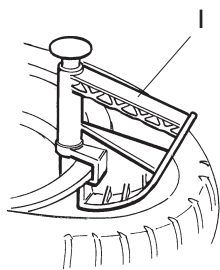
# GRUPPO STALLONATORE BEAD BREAKING GROUP



[TORNA AL COMPLESSIVO](#)  
[RETURNS TO OVERALL](#)

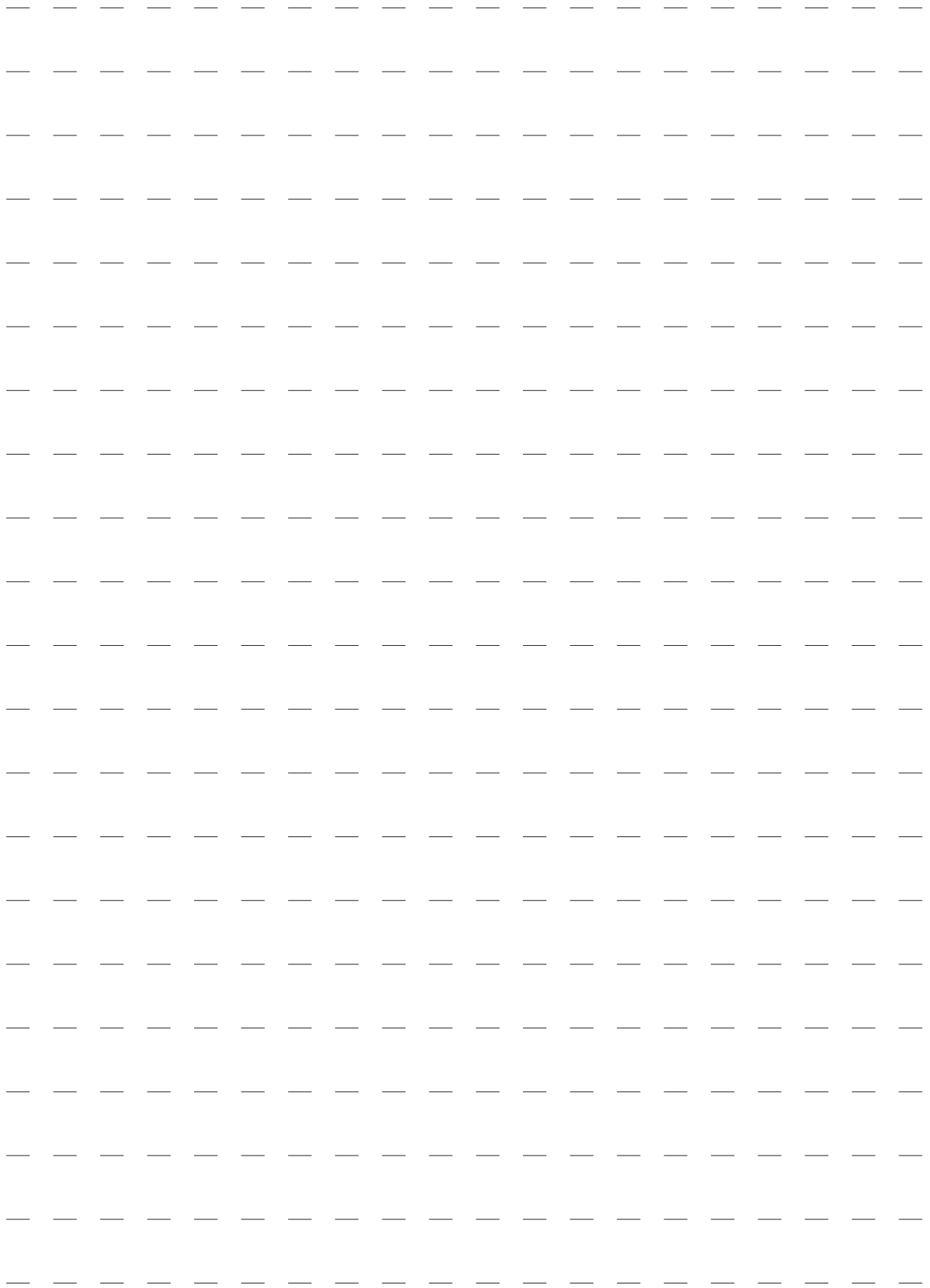
Rif. Ref.	Codice Code	Descrizione	Description
1	5-101261	CILINDRO STALLONATORE	BEAD BREAKER CYLINDER
2	3-00517	RACCPN-LO G1/4GO T10	LO-FITTING G1/4GO T10
3	325561	RONDELLA D.24X29,8X0,5	WASHER D.24X29,8X0,5
4	434031	ANELLO D.30	SEEGER D.30
5	3-00222	RACCPN-L G1/4C T10	L-FITTING G1/4C T10
6	351905	FALNGIA D.186	FLANGE D.186
7	4-103920	STELO D.20X429	STEM D.20X429
8	330190	CILINDRO D.186	CYLINDER D.186
9	337848	PISTONE D.186X44	PISTON D.186X44
10	2-00989	DADO ES. M18X1,5	HEXAGON NUT M18X1,5
11	2-00310	VTCEI M6X20	HEXAGON SOCKET HEAD SCREW M6X20
12	2-00211	RONDELLA D.6	WASHER D.6
13	436779	DADO ES.A. M6	AUTOLOCKING HEXAGON NUT M6
14	333524	DADO 1/4	NUT 1/4
16	238212	KIT GUARNIZIONI CILINDRO D.186	SEAL KIT CYLINDER D.186
17	36020245	VITE REGOLAZIONE BRACCIO STALL.	BEAD SPACER
18	4-123277	FULCRO BRACCIO STALLONATORE	FULCRUM PIN
19	4-104313	MOLLA TRAZIONE D.23X3X133	SPRING D.23X3X133
20	4-106071	DADO ES.A. M18X1,5	AUTOLOCKING HEXAGON NUT M18X1,5
21	431864	VITE SPECIALE FISS. CILINDRO M14X42	SPECIAL SCREW M14X42
22	2-00992	DADO ES. M14	HEXAGON NUT M14
23	2-00372	VTE M8X16	HEXAGON HEAD SCREW M8X16
24	2-71542	ROSETTA D.8	WASHER D.8
25	5-108308	BRACCIO STALLONATORE CON PALETTA	BEAD BREAKER ASSEMBLY
26	425219	MANOPOLA	KNOB
27	4-102689	PALETTA	BEAD BREAKER
28	4-103908	BRACCIO	ARM
29	35015286	TAMPONE FINECORSO D.60	STOP PAD D.60
30	33017256	PERNO ORIENTABILE	PIN
31	2-02670	VTE 1/2F M14X90	HEXAGON HEAD SCREW 1/2F M14X90
32	2-02250	RONDELLA ELASTICA 15X28	ELASTIC WASHER 15X28
33	2-01106	DADO ES.A. M14	AUTOLOCKING HEXAGON NUT M14
34	2-02510	SEEGER D.55	SEEGER D.55
35	4-123276	PIASTRA ANTIROTAZIONE	PLATE

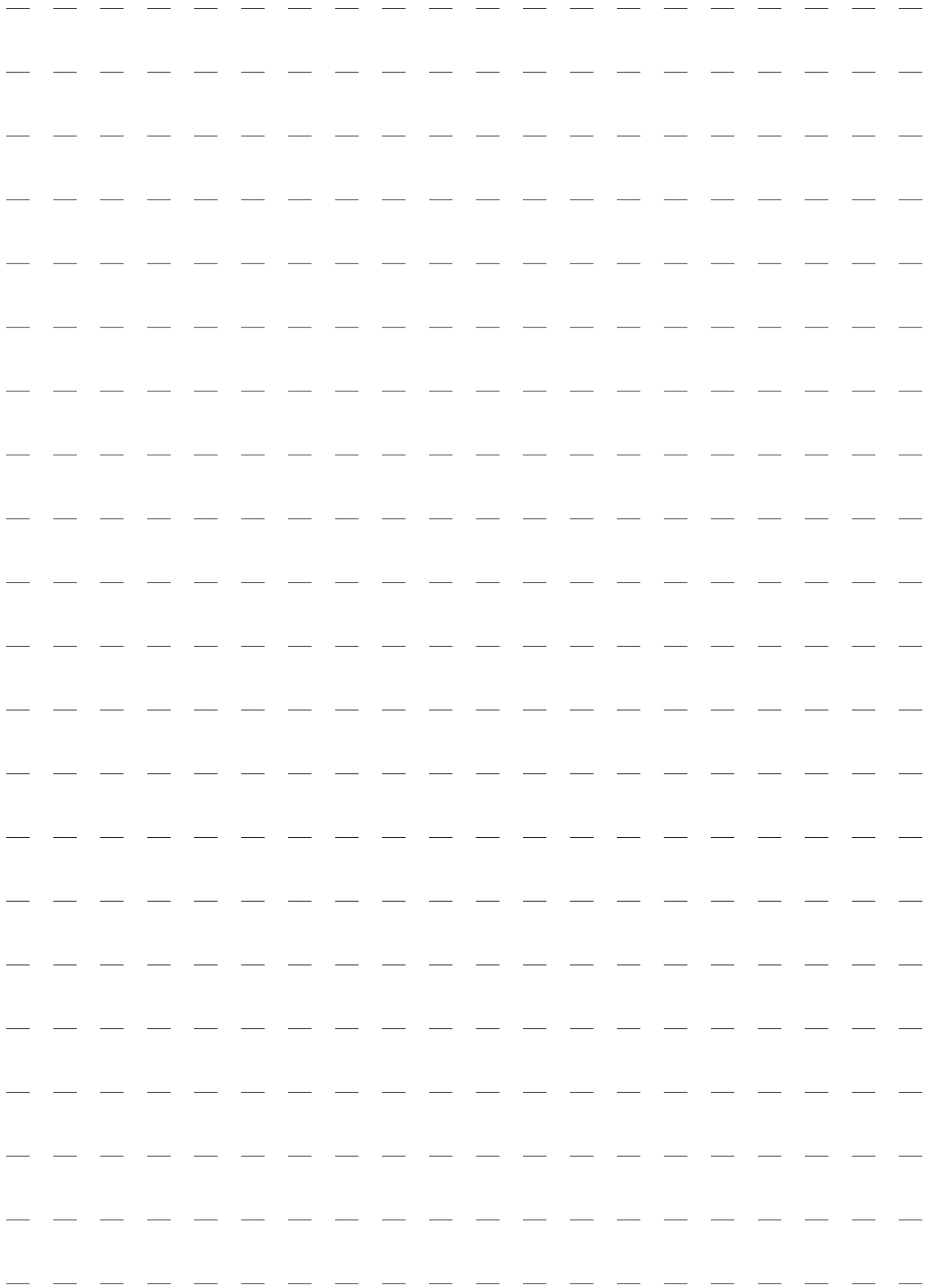
# ACCESSORI ACCESSORIES



[TORNA AL COMPLESSIVO](#)  
[RETURNS TO OVERALL](#)

Rif. Ref.	Codice Code	Descrizione	Description
1	801435685	PINZA PREMITALLONE	PLIERS MOUNTING TOOL
2	8-11100107	KIT 5 PASTIGLIE TORRETTA	PROTECTION HEAD KIT (5 PZ)
3	8-11100106	KIT 10 INSERTI TORRETTA	PROTECTION HEAD KIT (10 PZ)
4	801258650	KIT 4 ATTACCHI MOTO 15-23"	MOTO ADAPTOR KIT 15-23" (4 PZ)
5	435202	CUNEO BLOCCAGGIO MOTO 15-23"	PLASTIC WEDGE 15-23"
6	426746	CRICCHETTO DI BLOCCAGGIO	LOCKING
7	8-11100108	KIT 12 PROTEZIONI INTERNE	INTERNAL PROTECTION KIT (12 PZ)
8	8-11100109	KIT 12 PROTEZIONI ESTERNE	EXTERNAL PROTECTION KIT (12 PZ)
9	801458663	PROTEZIONE APPOGGIO CERCHIO	RIM PROTECTION
10	8-11100105	KIT 6 PROTEZIONI PALETTA	BEAD BREAKER PROTECTION KIT (6 PZ)
11	8-11100104	KIT 6 PROTEZIONI LEVA	LEVER PROTECTION KIT (6 PZ)
12	4-108275	LEVA	LEVER
13	801252083	KIT TORRETTA 8"	HEAD KIT 8"
14	801242834	LEVA PREMITALLONE	LEVER
15	425219	MANOPOLA	KNOB
16	440600	TESTINA	HEAD
17	801263517	KIT 4 ATTACCHI MOTO 8-24"	MOTO ADAPTOR KIT 8-24"
18	318916	CUNEO BLOCCAGGIO MOTO 8-24"	PLASTIC WEDGE 8-24"
19	413163	INSERTO CUNEO 8-24"	WEDGE INSERT 8-24"





Code 4-I23299

Production date : 06 / 2021

Il disegno è realizzato con tutti i particolari ma solo quelli codificati sono forniti come ricambi. L'Azienda si riserva la facoltà di apportare modifiche senza preavviso.

The drawing shows all parts but only the coded parts are supplied as spares. The Company reserves the right to make modifications without prior notice.