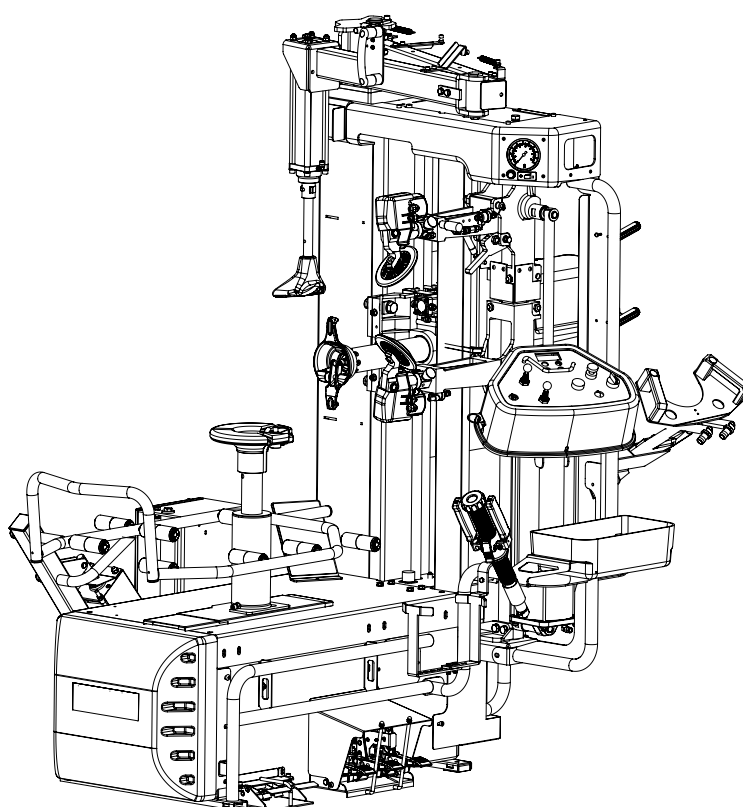


ARTIGLIO MASTER 28

Pezzi di ricambio / Spare parts list



Code: 4-137579

Production date: 06 / 2021



www.corgi.com - info@corgi.com

I

Sul presente documento sono stati evidenziati con colore grigio i ricambi consigliati e indicati in grassetto i codici che sono variati rispetto a quelli riportati nella precedente versione del 09/19

EN

In this document, the recommended spare parts have been highlighted in gray, while in bold you find those codes which are different if compared with the previous version dated 09/19

DE

Im vorliegenden Dokument wurden die empfohlenen Ersatzteile in grauer Farbe hervorgehoben; die Teilenummern in Fettdruck haben sich bezugnehmend auf die vorherige Version vom 09/19 geändert.

FR

Dans ce document, les pièces de rechange préconisées sont soulignées en gris, tandis que les références différentes par rapport à la version précédente du 09/19 sont en gras

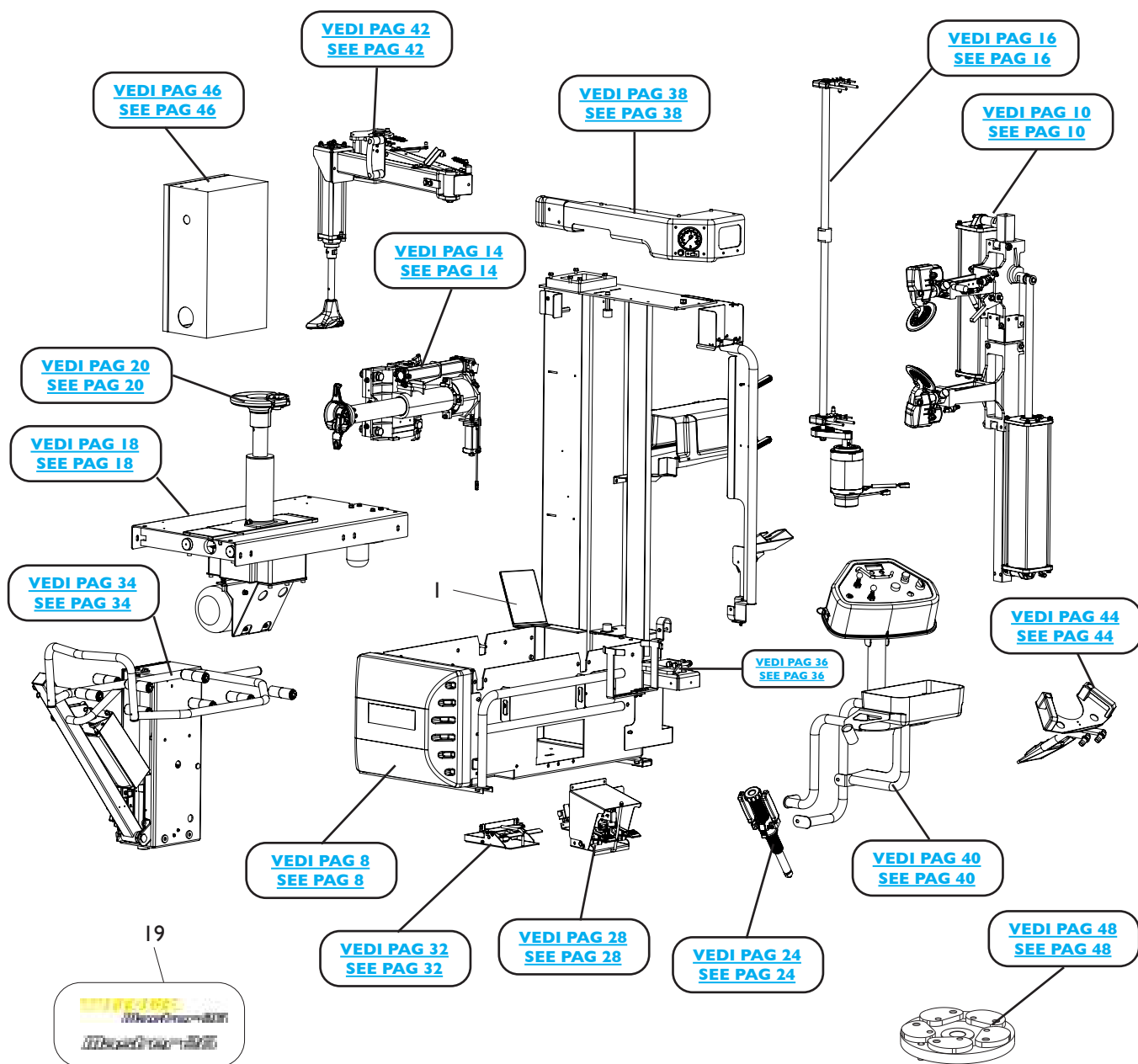
SOMMARIO

CONTENTS

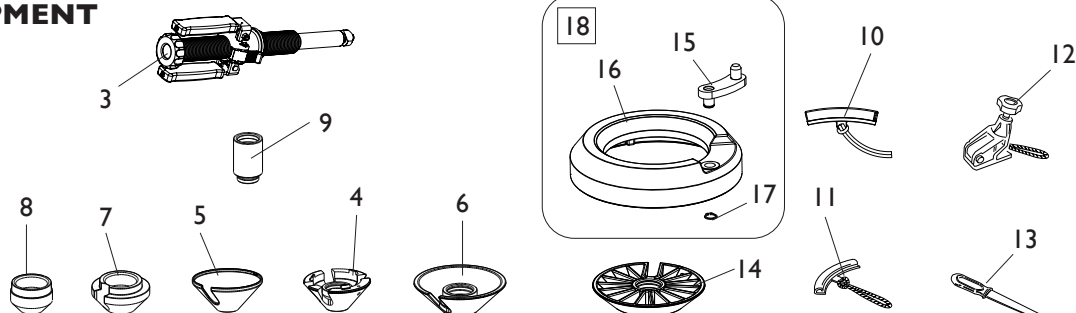
COMPLESSIVO ARTIGLIO M28 ARTIGLIO M28 OVERALL	4
COMPLESSIVO ARTIGLIO M28 AUTOMATIC ARTIGLIO M28 AUTOMATIC OVERALL	6
GRUPPO TELAIO E COVER FRAME AND COVER GROUP	8
GRUPPO STALLONATORE BEAD BREAKER GROUP	10
GRUPPO DISCO STALLONATORE BEAD BREAKER DISC GROUP	12
GRUPPO TESTINA HEAD GROUP	14
GRUPPO TRASLAZIONE VERTICALE VERTICAL TRANSLATION GROUP	16
GRUPPO TRASLAZIONE RUOTA WHEEL TRANSLATION GROUP	18
GRUPPO AUTOCENTRANTE TURNTABLE GROUP	20
GR. AUTOCENTRANTE (VERS. AUTOMATICA) TURNTABLE GROUP (AUTOMATIC VERSION)	22
MANIGLIA BLOCCAGGIO RUOTA HANDLE LOCKING WHEEL	24
MANIGLIA BLOCCAGGIO RUOTA (VERS. AUTOMATICA) HANDLE LOCKING WHEEL (AUTOMATIC VERSION)	26
GRUPPO PEDALIERA PEDAL GROUP	28
GRUPPO PEDALIERA (VERS. AUTOMATICA) PEDAL GROUP (AUTOMATIC VERSION)	30
GRUPPO PEDALIERA SOLLEVATORE PEDAL LIFTER GROUP	32
GRUPPO SOLLEVATORE LIFTER GROUP	34
GRUPPO ROTAZIONE STALLONATORE BEAD BREAKER ROTATION GROUP	36
GRUPPO MANOMETRO PRESSURE GAUGE GROUP	38
GRUPPO CONSOLLE COMANDI COMMAND CONSOLLE GROUP	40
GRUPPO PREMITALLONE BEAD DEPRESSOR GROUP	42
GRUPPO T.I. SYSTEM T.I. SYSTEM GROUP	44
GRUPPO IMPIANTO ELETTRICO ELECTRIC PANEL GROUP	46
ACCESSORI ACCESSORIES	48

COMPLESSIVO ARTIGLIO M28

ARTIGLIO M28 OVERALL



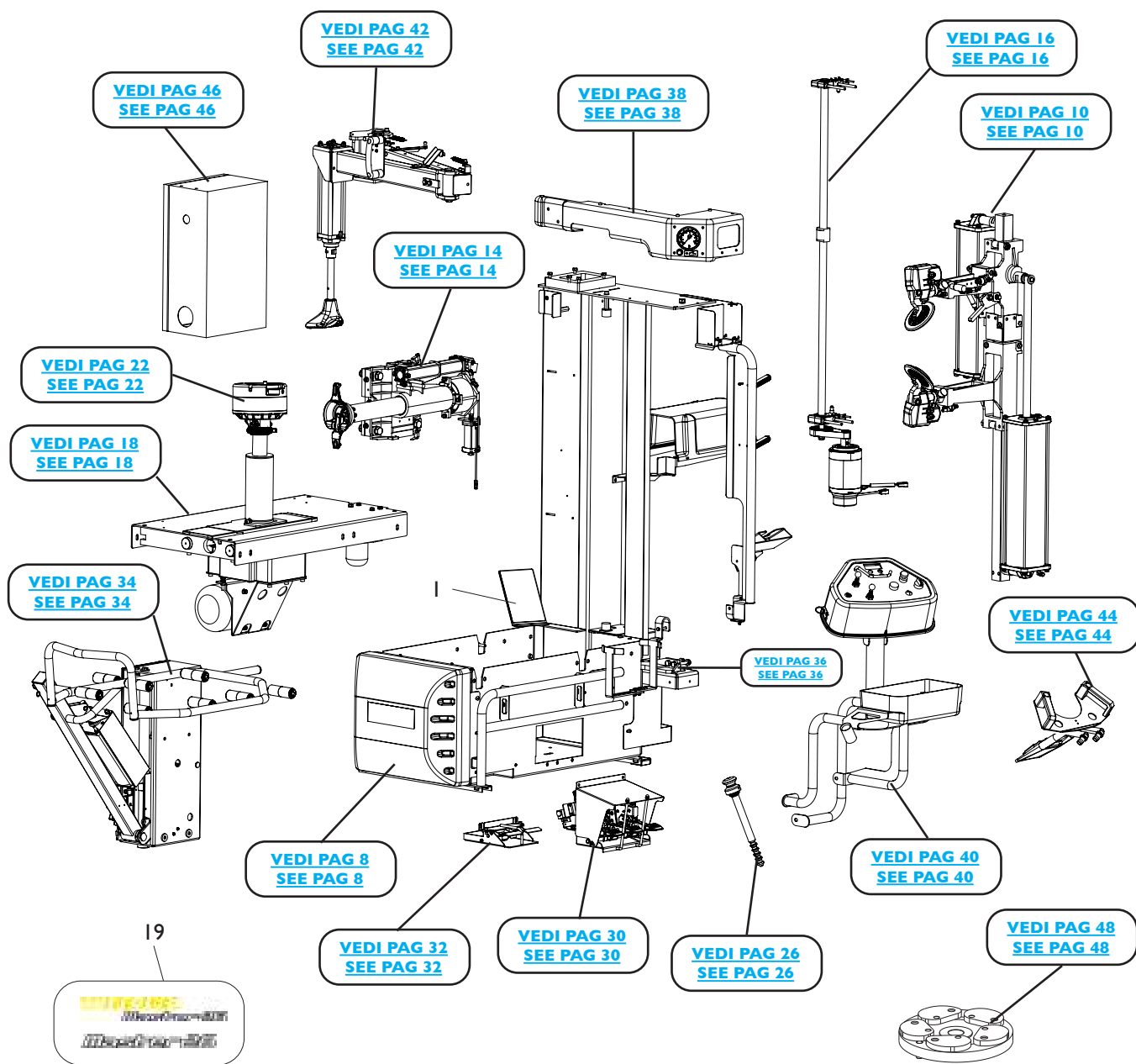
DOTAZIONE EQUIPMENT



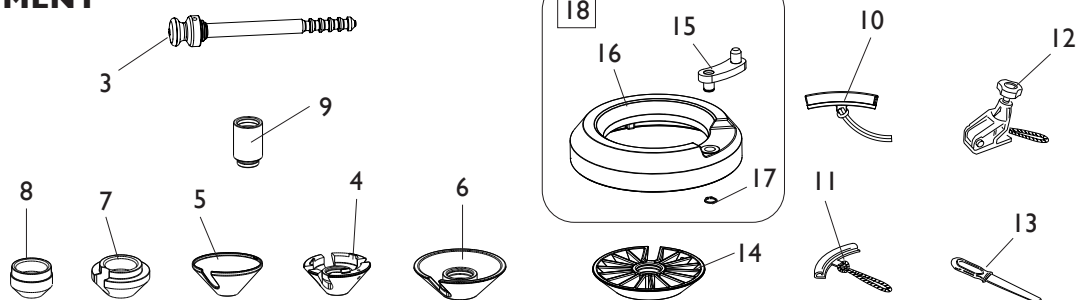
Rif. Ref.	Codice Code	Descrizione	Description
1	5-103591	SPECCHIO	MIRROR
3	5-101197	MANIGLIA BLOCCAGGIO RUOTA	HANDLE LOCKING WHEEL ASSEMBLY
4	4-103230	CONO D.120	CONE D.120
5	4-103232	CUFFIA PROTEZIONE CONO D.120	PROTECTION CONE D.120
5	4-135006	CUFFIA PROTEZIONE CONO D.145	PROTECTION CONE D.145
6	4-103229	CONO D.145	CONE D.145
7	4-118294	CONO D.75	CONE D.75
8	4-103235	CONO D.58	CONE D.58
9	5-102722	PROLUNGA MANIGLIA	HANDLE EXTENTION
10	5-491007	KIT 3 PARABORDI CORTI	THREE SHORT FENDER KIT
11	2201716	KIT 3 PARABORDI	TREE FENDER KIT
12	262417	PINZA RUN FLAT	CLAMP RUN FLAT
13	4-405496	PROTEZIONE TALLONE	HEEL PROTECTION
14	4-103233	CONO D.187	CONE D.187
15	4-103110	MANOVELLA	CRANK
16	4-102360	ANELLO DISTANZIALE	SPACER RING
17	2-00026	SEEGER D.14	SEEGER D.14
18	5-100690	ANELLO DISTANZIALE COMPLETO	SPACER RING ASSEMBLY
19	5-123938	KIT ADESIVI M28	LABELS KIT M28

COMPLESSIVO ARTIGLIO M28 AUTOMATIC

ARTIGLIO M28 AUTOMATIC OVERALL

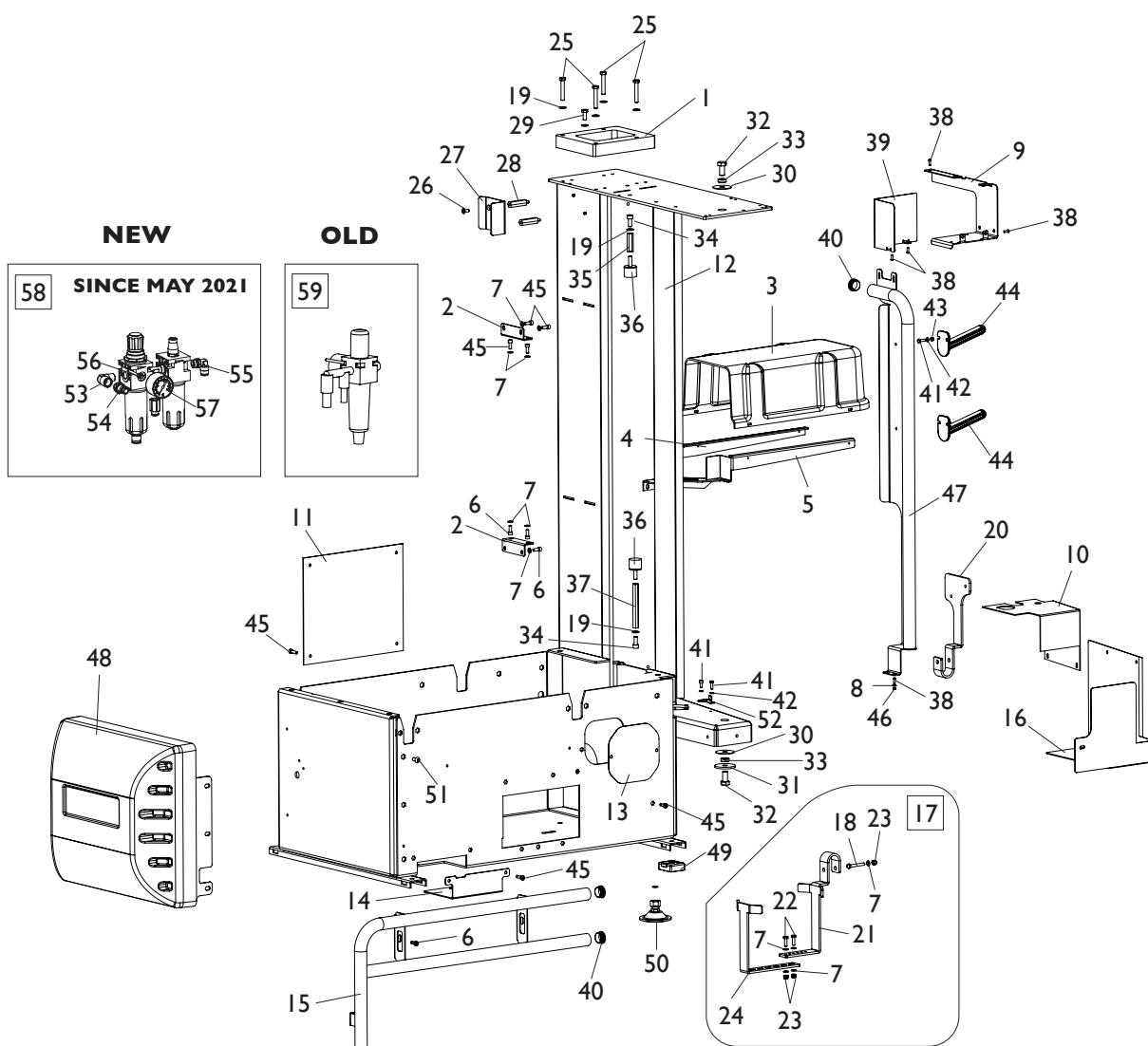


DOTAZIONE EQUIPMENT



Rif. Ref.	Codice Code	Descrizione	Description
1	5-103591	SPECCHIO	MIRROR
3	5-100683	MANIGLIA BLOCCAGGIO RUOTA	HANDLE LOCKING WHEEL ASSEMBLY
4	4-102353	CONO D.120	CONE D.120
5	461668	CUFFIA PROTEZIONE CONO D.120	PROTECTION CONE D.120
5	4-135006	CUFFIA PROTEZIONE CONO D.145	PROTECTION CONE D.145
6	4-102346	CONO D.145	CONE D.145
7	4-118295	CONO D.74	CONE D.74
8	462414	CONO D.54	CONE D.54
9	263436	PROLUNGA MANIGLIA	HANDLE EXTENTION
10	5-491007	KIT 3 PARABORDI CORTI	THREE SHORT FENDER KIT
11	2201716	KIT 3 PARABORDI	TREE FENDER KIT
12	262417	PINZA RUN FLAT	CLAMP RUN FLAT
13	4-405496	PROTEZIONE TALLONE	HEEL PROTECTION
14	461667	CONO D.187	CONE D.187
15	4-103110	MANOVELLA	CRANK
16	4-102360	ANELLO DISTANZIALE	SPACER RING
17	2-00026	SEEGER D.14	SEEGER D.14
18	5-100690	ANELLO DISTANZIALE COMPLETO	SPACER RING ASSEMBLY
19	5-123939	KIT ADESIVI M28 AUTOMATIC	LABELS KIT M28 AUTOMATIC

GRUPPO TELAIO E COVER FRAME AND COVER GROUP



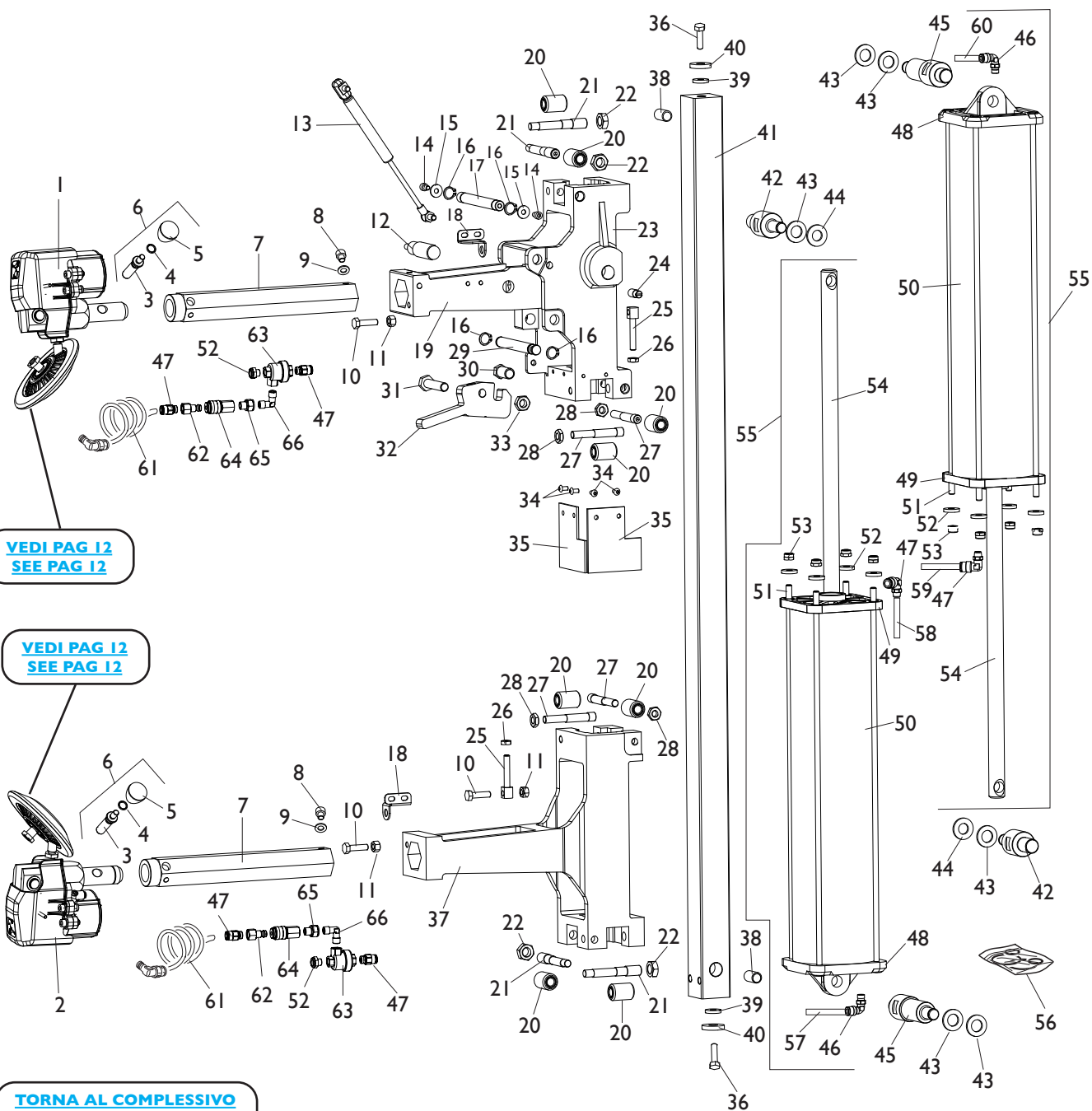
[TORNA AL COMPLESSIVO](#)
[RETURNS TO OVERALL](#)

Ref.	Code	Descrizione	Description
1	4-137510	LAMIERA DISTANZIALE	PLATE
2	4-100181	SUPPORTO CASSETTA ELETTRICA	SUPPORT ELECTRICAL BOX
3	4-118119	COPERCHIO TESTINA	HEAD COVER
4	4-137847	SUPPORTO POSTERIORE	REAR SUPPORT
5	4-137511	SUPPORTO ANTERIORE	FRONT SUPPORT
6	2-00308	VTCEI M6X10	CIRCULAR SOCKET HEAD SCREW M6X10
7	2-00211	RONDELLA D.6	WASHER D.6

Ref.	Code	Descrizione	Description
8	2-00209	RONDELLA D.4	WASHER D.4
9	4-137445	LAMIERA CHIUSURA	PLATE
10	361269	LAMIERA PROTEZIONE PULEGGIA	SHEET METAL PULLEY GUARD
11	361246	COPERCHIO LATERALE	LATERAL COVER
12	263115	LAMIERA PROTEZIONE LUNGA	PROTECTION SHEET LONG
13	4-108481	LAMIERA CHIUSURA LATERALE	LATERAL COVER
14	4-118132	LAMIERA CHIUSURA PEDALE SOLLEVATORE	SHEET CLOSING PEDAL LIFTER
15	4-137441	TUBO LATERALE	TUBE
16	4-137439	LAMIERA PROTEZIONE MOTORE	MOTOR PLATE
17	5-101236	SUPPORTO GRASSO	SUPPORT GREASE
18	2-02802	VTE 1/2F M8X50	HEXAGON SOCKET HEAD SCREW 1/2F M8X50
19	2-00212	RONDELLA D.8	WASHER D.8
20	4-137619	LAMIERA SUPPORTO TI	PLATE
21	4-103831	GANCIO	HOOK
22	2-02339	VTE M6X20	HEXAGON SOCKET HEAD SCREW M6X20
23	2-01257	DADO ES.N.A. M6	NORMAL AUTOLOCKING HEXAGON NUT M6
24	4-103832	LAMIERA FERMO	PLATE
25	2-71399	VTE 1/2F M8X50	HEXAGON HEAD SCREW 1/2F M8X50
26	2-00711	VTSEI M6X16	SCREW M6X16
27	4-137447	LAMIERA FERMO PREMITALLONE	PLATE
28	4-137448	DISTANZIALE M6 H58	SPACER M6 H58
29	2-00373	VTE M8X20	HEXAGON HEAD SCREW M8X20
30	360474	RONDELLA D.12,5X45X1,5	WASHER D.12,5X45X1,5
31	318216	RONDELLA D.12,5X50X1,5	WASHER D.12,5X50X1,5
32	2-01225	VTE M12X25	HEXAGON SOCKET HEAD SCREW M12X25
33	361419	BOCCOLA D.20X6,5	BUSHING D.20X6,5
34	2-00320	VTCEI M8X20	CIRCULAR SOCKET HEAD SCREW M8X20
35	361607	DISTANZIALE M8 H45	SPACER M8 H45
36	461612	ANTIVIBRANTE 30X25 M8X20	ANTIVIBRATION 30X25 M8X20
37	361606	COLONNETTA ESAGONALE LUNGA	LONG COLUMN HEX
38	2-02146	VTBEI M4X12	SCREW M4X12
39	4-137446	LAMIERA CHIUSURA	PLATE
40	3-03824	TAPPO D.30	CAP D.30
41	2-00355	VTE M5X16	HEXAGON HEAD SCREW M5X16
42	2-00210	RONDELLA D.5	WASHER D.5
43	2-00676	DADO ES. M5	HEXAGON NUT M5
44	462087	SUPPORTO CONI	CONE SUPPORT
45	2-00310	VTCEI M6X20	HEXAGON SOCKET HEAD SCREW M6X20
46	2-00149	DADO ES. M4	HEXAGON NUT M4
47	4-137709	COVER POSTERIORE	REAR COVER
48	4-137440	PROTEZIONE TERMOFORMATO	FRONT COVER
49	422019	PIEDE	FOOT
50	215022	PIEDE	FOOT
51	2-02144	VTBEI M8X16	SCREW M8X16
52	4-102194	TENDICINGHIA	BELT TENSIONER
53	3-00136	RACCPN-L-GI/4C-F	FITTING I/4
54	3-00086	RACCPN-D-GI/4-GR7	FITTING I/4
55	3-00055	RACCPN-L-GI74-T8	FITTING GI/4
56	2-02643	VTCEI M4X40	HEX. SOCKET HEAD SCREW M4X40
57	3-00488	MANOMETRO D.40	PRESSURE GAUGE D.40
58	462929	FILTRO REGOLATORE	FILTER
59	4-111320	GRUPPO FILTRO REGOLATORE	FILTER REGULATOR

GRUPPO STALLONATORE

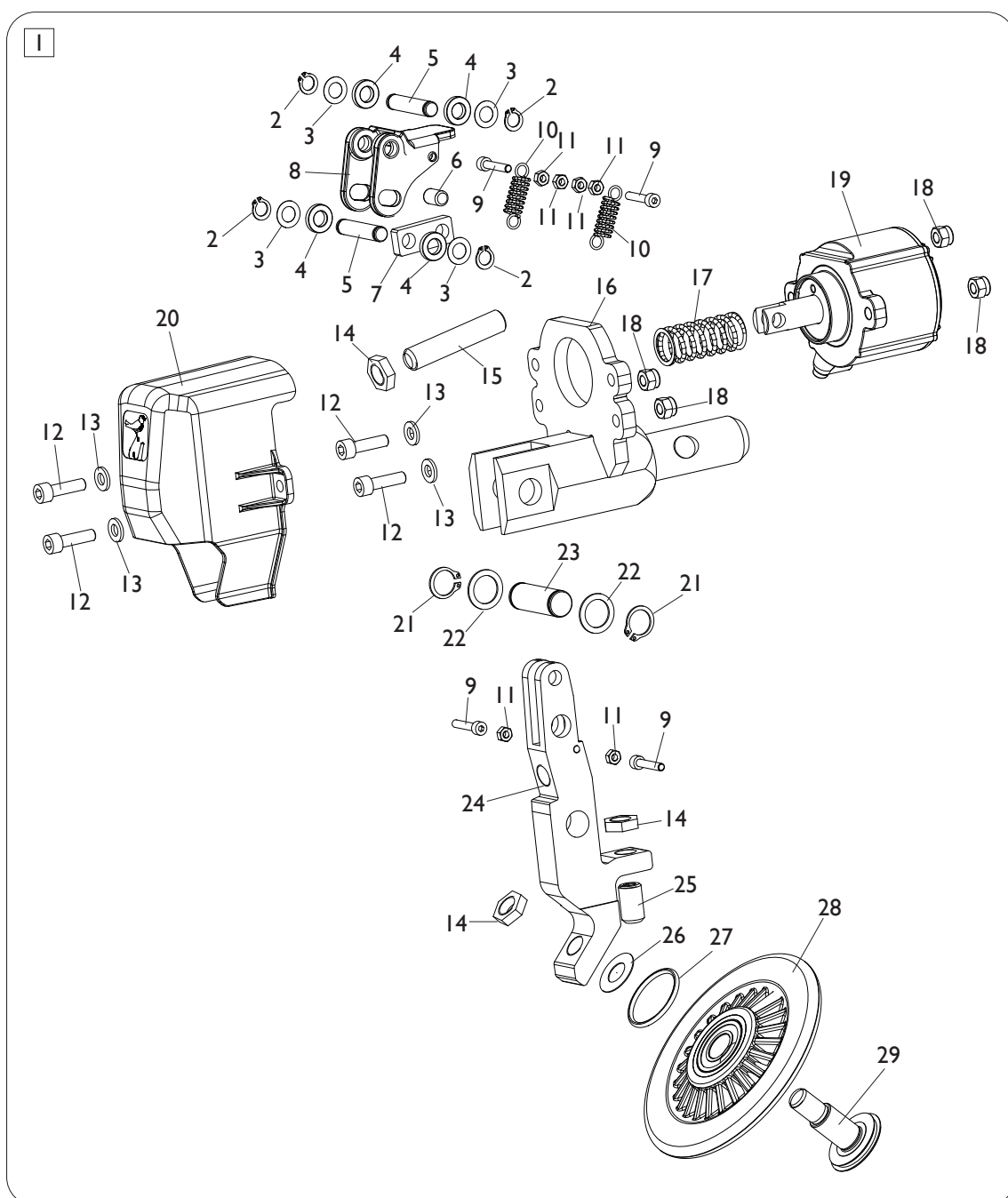
BEAD BREAKER GROUP



Rif. Ref.	Codice Code	Descrizione	Description
1	5-123120	DISCO STALLONATORE SUPERIORE	UPPER BEAD BREAKER DISC ASSEMBLY
2	5-123119	DISCO STALLONATORE INFERIORE	LOWER BEAD BREAKER ASSEMBLY
3	4-108416	PERNO DI BLOCCAGGIO PENETRAZIONE	LOCKING PIN PENETRATION
4	424617	OR D.9,25X1,78	O-RING D.9,25X1,78
5	3-02164	IMPUGNATURA M8	HANDLE M8
6	5-120146	PERNO BLOCCAGGIO PENETRAZIONE	PIN ASSEMBLY
7	4-118165	BARRA ESAGONALE	HEXAGONAL BAR
8	4-103071	VTCEI SPECIALE M8X8	SPECIAL CIRC. SOCKET HEAD SCREW M8X8

Rif. Ref.	Codice Code	Descrizione	Description
9	2-00212	RONDELLA D.8	WASHER D.8
10	320191	VITE SPECIALE M8X30	SPECIAL SCREW M8X30
11	2-00112	DADO ES.A. M8	AUTOLOCKING HEXAGON NUT M8
12	4-100168	MANOPOLA GIREVOLE	HANDLE
13	4-118481	AMMORTIZZATORE STABILUS	DAMPER
14	2-02151	VTBEI M6X8	ROUNDED HEAD SCREW SOCKET M6X8
15	2-00679	ROSETTA D.6,6X18X1,5	WASHER D.6,6X18X1,5
16	2-00026	SEEGER D.14	SEEGER D.14
17	361422	PERNO FULCRO	FULCRUM PIN
18	4-108423	LAMIERA SUPPORTO RACCORDO	FITTING SUPPORT
19	361411	SUPPORTO BASCULANTE	TILTING SUPPORT
20	361396	RULLO ECCENTRICO	ECCENTRIC ROLLER
21	363190	ECCENTRICO M14	ECCENTRIC M14
22	2-71520	DADO ES.B. M14X1,5	LOW HEXAGON NUT M14X1,5
23	361410	SUPPORTO MOBILE	MOBILE SUPPORT
24	361414	ARRESTO	STOPPING
25	4-118166	PERNO DI FERMO	STOPPING PIN
26	2-00156	DADO ES.B. M8	LOW HEXAGON NUT M8
27	363191	ECCENTRICO M10	ECCENTRIC M10
28	2-03127	DADO ES. M10X1,5	HEXAGON NUT M10X1,5
29	361423	PERNO FULCRO	FULCRUM PIN
30	361398	BOCCOLA	BUSHING
31	2-01160	VTE 1/2F M12X55	HEX. SOCKET HEAD SCREW 1/2F M12X55
32	361385	GANCIO STALLONATORE	HOOK
33	2-00158	DADO ES.B. M12	LOW HEXAGON NUT M12
34	2-02167	VTBEI M5X10	ROUNDED HEAD SCREW SOCKET M5X10
35	4-118637	GOMMA PROTEZIONE STALLONATORE	RUBBER
36	2-01225	VTE M12X25	HEXAGON SOCKET HEAD SCREW M12X25
37	361412	SUPPORTO FISSO	FIXED SUPPORT
38	361419	BOCCOLA D.20X6,5	BUSHING D.20X6,5
39	360474	RONDELLA D.12,5X45X1,5	WASHER D.12,5X45X1,5
40	318216	RONDELLA D.12,5X50X1,5	WASHER D.12,5X50X1,5
41	4-100340	ASTA	ROD
42	4-137450	ATTACCO CILINDRO	CYLINDER PORT
43	2-01045	RONDELLA D.16	RONDELLA D.16
44	345032	RONDELLA D.15,25X30X3	WASHER D.15,25X30X3
45	4-137449	ATTACCO CILINDRO	CYLINDER PORT
46	3-00055	RACCPN-LO-G1/4G-T8	FITTING 1/4
47	3-00461	RACCPN-D-G1/8G-T6	D-FITTING-G1/8G-T6
48	4-137517	FLANGIA POST.D.125	REAR FLANGE D.125
49	5-124099	FLANGIA ANT. D.125	FRONT FLANGE D.125
50	4-137520	CAMICIA D.125X495	LINER D.125X495
51	4-137518	TIRANTE M8X540	TIE ROD M8X540
52	3-00181	SILENZIATORE 1/8	SILENCER 1/8
53	2-01137	DADO ES.B.A. M8	NORMAL AUTOLOCKING HEXAGON NUT M8
54	4-137519	STELO D.25X554	STEM D.25X554
55	5-123134	CILINDRO STALLONATORE	BEAD BREAKER CYLINDER
56	5-124098	KIT GUARNIZIONI CIL.STALLONATORE	CYLINDER SEALS KIT
57	4-118522	TUBO D.8 L.1000MM	HOSE D.8 L.1000MM
58	4-118521	TUBO D.8 L.1800MM	HOSE D.8 L.1800MM
59	4-118520	TUBO D.8 L.2200MM	HOSE D.8 L.2200MM
60	4-118519	TUBO D.8 L.2750MM	HOSE D.8 L.2750MM
61	4-135072	TUBO A SPIRALE	SPIRAL HOSE
62	3-01655	RACCPN-ATTACCO-G1/8-F	FITTING-G1/8-F
63	4-135134	VALVOLA SCARICO RAPIDO G1/8	VALVE G1/8
64	3-03817	RACCPN-GIUNTO-G1/8	FITTING-G1/8
65	3-00083	RACCPN-RIDUZIONE-G1/8C-1/8F	FITTING-G1/8C-1/8F
66	3-00308	RACCPN-GIUNZIONE-L-G1/8 M/M	L-FITTING-G1/8C-1/8F

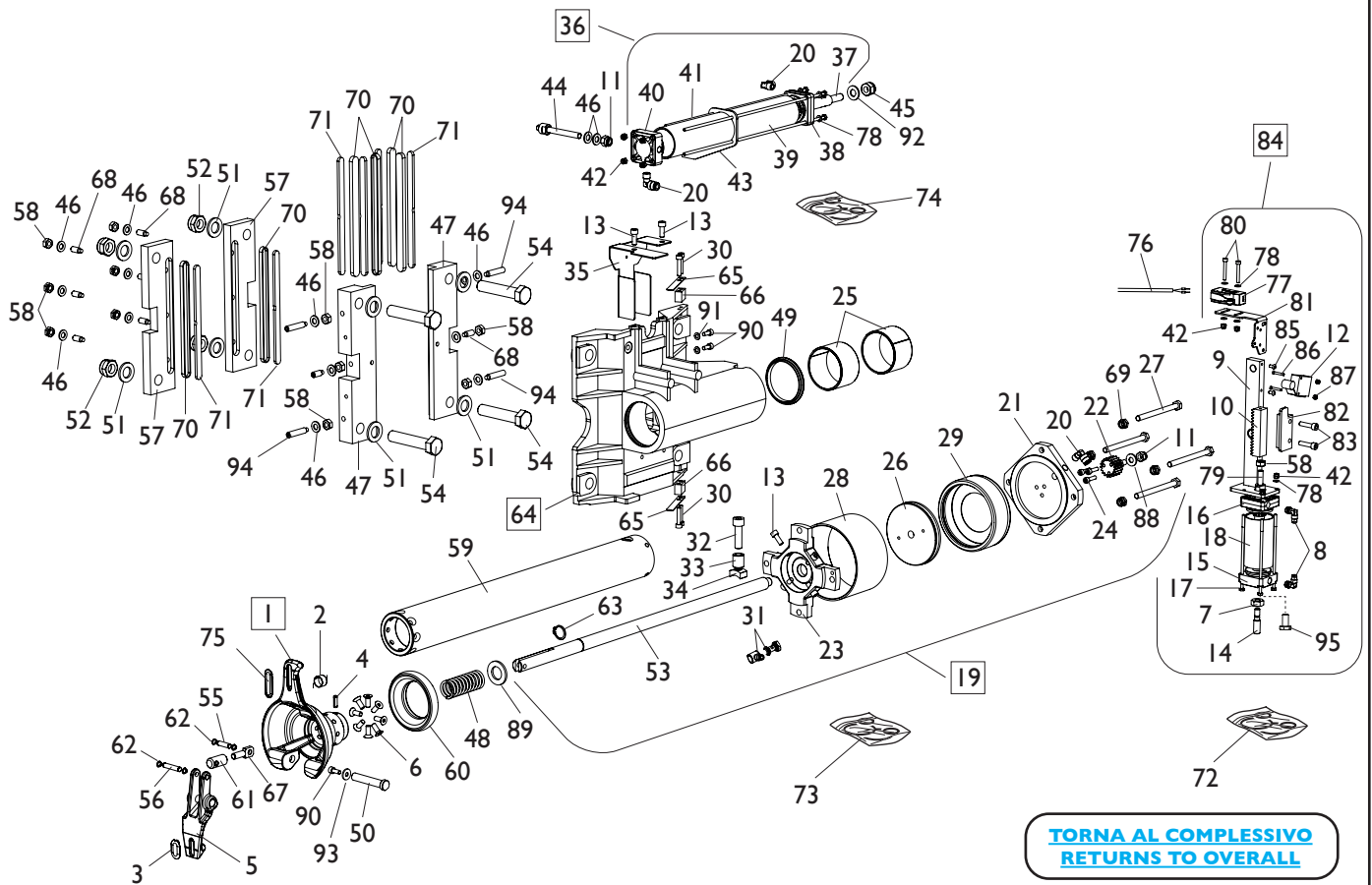
GRUPPO DISCO STALLONATORE BEAD BREAKER DISC GROUP



[TORNA AL COMPLESSIVO](#)
[RETURNS TO OVERALL](#)

Rif. Ref.	Codice Code	Descrizione	Description
1	5-123120	DISCO STALLONATORE SUPERIORE	UPPER BEAD BREAKER DISC ASSEMBLY
1	5-123119	DISCO STALLONATORE INFERIORE	LOWER BEAD BREAKER ASSEMBLY
2	2-00021	SEEGER D.8	SEEGER D.8
3	301694	RONDELLA D.14X8X0,2	WASHER D.14X8X0,2
4	339856	RONDELLA D.8,25X15X3	WASHER D.8,25X15X3
5	4-106224	PERNO	PIN
6	4-106234	PERNO FULCRO BIELLA	FULCRUM PIN
7	4-106199	BIELLA	CONNECTING ROD
8	4-106025	LAMIERA DI BLOCCO PENETRAZIONE	SHEET BLOCK
9	2-00927	VTCEI M4X22	CIRCULAR SOCKET HEAD SCREW M4X22
10	4-106238	MOLLA A TRAZIONE	SPRING
11	2-00143	DADO ES.N. M4	NORMAL HEXAGON NUT M4
12	2-00934	VTCEI M6X22	CIRCULAR SOCKET HEAD SCREW M6X22
13	2-00211	RONDELLA D.6	WASHER D.6
14	4-106024	DADO SPECIALE M12	SPECIAL NUT M12
15	2-02398	VSTEI M12X60	CSK SCREW SOCKET M12X60
16	4-118170	SUPPORTO SUPERIORE	UPPER SUPPORT
16	4-118176	SUPPORTO INFERIORE	LOWER SUPPORT
17	4-106235	MOLLA D.20X45X2,2	SPRING D.20X45X2,2
18	2-01257	DADO ES.N.A. M6	NORMAL AUTOLOCKING HEXAGON NUT M6
19	5-123117	CILINDRO PNEUMATICO D.60	CYLINDER D.60
20	4-108676	CARTER	COVER
21	2-00026	SEEGER D.14	SEEGER D.14
22	435005	RONDELLA D.15X21X1	WASHER D.15X21X1
23	4-103723	PERNO	PIN
24	4-106181	SUPPORTO DISCO	DISK SUPPORT
25	2-02096	VSTEI M12X20	CSK SCREW SOCKET M12X20
26	462117	RONDELLA D.12X24X0,5	WASHER D.12X24X0,5
27	421833	OR D.29,82X2,62	O-RING D.29,82X2,62
28	5-100688	RULLO	ROLLER
29	4-106180	PERNO ANTISVITAMENTO	PIN

GRUPPO TESTINA HEAD GROUP

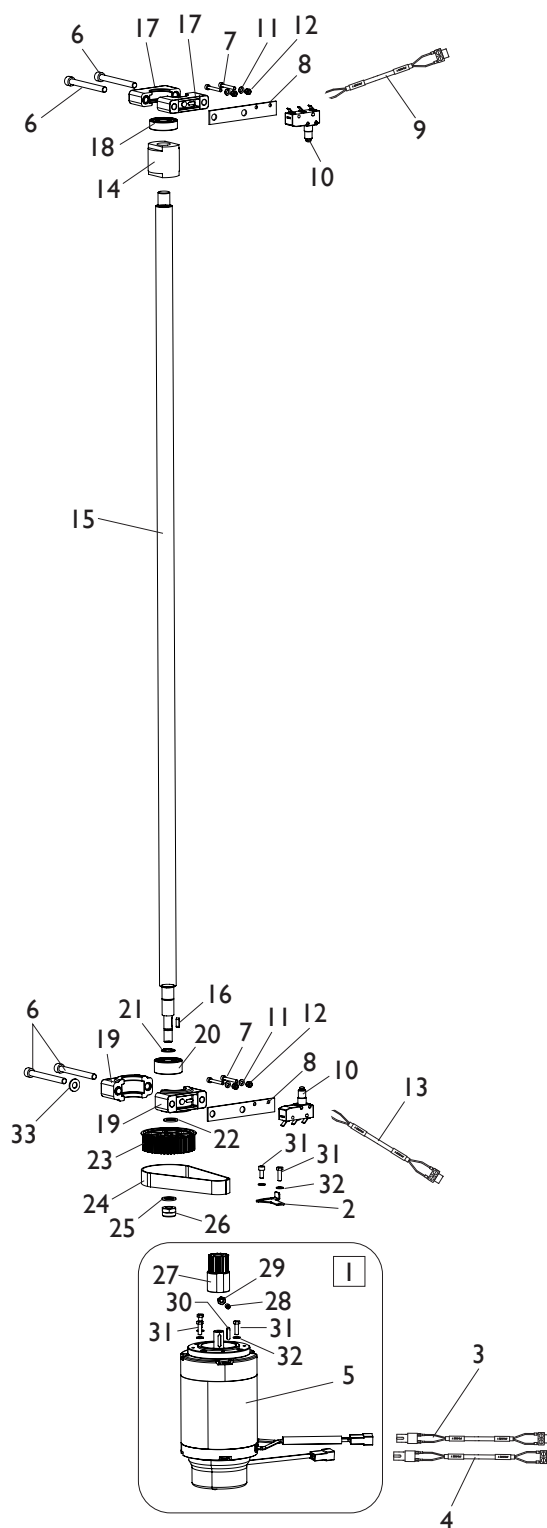


Ref.	Code	Descrizione	Description
1	5-104502	TESTINA COMPLETA	HEAD ASSEMBLY
2	3-03048	BOCCOLA D.18X20X12	BUSHING D.18X20X12
3	461489	INSERTO TESTINA GIALLO	YELLOW INSERT
4	2-02220	SPINA D.5X16	PIN D.5X16
5	361403	UTENSILE	TOOL
6	2-00711	VTSPFI M6X16	CSK FLAT HEAD SCREW SOCKET M6X16
7	2-00152	DADO ES. M10	HEXAGON NUT M10
8	3-00220	RACCPN-L-G1/8C-T4	FITTING 1/4
9	5-106874	PIASTRA	PLATE
10	361479	CREMAGLIERA	RACK
11	2-01020	DADO ES.N.A. M8	NORMAL AUTOLOCKING HEXAGON NUT M8
12	3-01408	VALVOLA	VALVE
13	2-00309	VTCEI M6X16	HEXAGON SOCKET HEAD SCREW M6X16
14	4-102259	REGISTRO	REGISTER
15	4-102255	FLANGIA POSTERIORE D.40	REAR FLANGE D.40
16	463204	FLANGIA ANTERIORE D.40	FRONT FLANGE D.40
17	461509	TIRANTE M4X120	TIE ROD M4X120
18	361508	CAMICIA D.40X79	LINER D.40X79
19	5-123093	CIL. MOVIMENTO UTENSILE COMPLETO	CYLINDER TOOL MOVING ASSEMBLY
20	3-00217	RACCPN-L-G1/8C-T6	FITTING 1/8
21	361493	FLANGIA POSTERIORE D.110	REAR FLANGE D.110
22	361492	INGRANAGGIO	GEAR
23	361499	ATTACCO PISTONE	PISTON PORT
24	2-00298	VTCEI M5X20	CIRCULAR SOCKET HEAD SCREW M5X20
25	3-01159	BOCCOLA D.60X40	BUSHING D.60X40
26	361495	PISTONE	PISTON
27	2-71394	VTE 1/2F M8X100	HEX. SOCKET HEAD SCREW 1/2F M8X100
28	361483	CAMICIA D.110X70	LINER D.110X70
29	361494	PISTONE	PISTON
30	2-00299	VTCEI M5X25	CIRCULAR SOCKET HEAD SCREW M5X25

Ref.	Code	Descrizione	Description
31	5-102718	RACCORDO M5 +VITE M5	FITTING M5 WITH SCREW M5
32	2-03136	VTCEI M10X1,25X35	HEXAGON SOCKET HEAD SCREW M10X1,25X35
33	361481	BOCCOLA FINE CORSA	BUSHING
34	361482	PIASTRA DISTANZIALE 20X15	SPACER 20X15
35	5-105584	LAMIERA+FELTRO	SHEET
36	5-105163	CILINDRO TRASLAZIONE COMPLETO	CYLINDER TRANSLATION ASSEMBLY
37	4-116197	STELO D.15	STEM D.15
38	4-108323	FLANGIA ANTERIORE D.40	FRONT FLANGE D.40
39	4-116196	CAMICIA D.40X273,5	LINER D.40X273,5
40	4-108322	FLANGIA POSTERIORE D.40	REAR FLANGE D.40
41	4-116198	TIRANTE M4X310	TIE ROD M4X310
42	2-01018	DADO ES.N.A M4	NORMAL AUTOLOCKING HEXAGON NUT M4
43	4-116202	SUPPORTO CILINDRO TRASLAZIONE	CYLINDER TRANSLATION SUPPORT
44	4-116200	PERNO CILINDRO TRASLAZIONE	PIN
45	2-01019	DADO ES.N.A. M10	NORMAL AUTOLOCKING HEX. NUT M10
46	2-00212	RONDELLA D.8	WASHER D.8
47	4-137690	SUPPORTO PATTINO INTERNO	SLIDE SUPPORT
48	4-108456	MOLLA D.26X3X66	SPRING D.26X3X66
49	3-01173	RASCHIATORE	SCRAPER RING
50	361488	FULCRO	FULCRUM
51	2-01045	RONDELLA D.16	WASHER D.16
52	2-71526	DADO ES.B.A. M16	LOWER AUTOLOCKING HEXAGON NUT M16
53	4-137424	STELO	STEM
54	2-01305	VTE 1/2F M16X80	HEXAGON HEAD SCREW 1/2F M16X80
55	4-122416	PERNO D.6	PIN D.6
56	361487	SPINA LUNGA	LONG PIN
57	4-137691	SUPPORTO PATTINO ESTERNO	SLIDE SUPPORT
58	2-00151	DADO ES. M8	HEXAGON NUT M8
59	361477	TUBO	TUBE
60	461476	RULLO	ROLLER
61	361484	REGISTRO	REGISTER
62	2-00020	SEEGER D.4	SEEGER D.4
63	2-00821	SEEGER D.18	SEEGER D.18
64	5-106097	CARRELLO CON BOCCOLE	TROLLEY+BUSHES
65	4-102831	MOLLA A BALESTRA	LEAF SPRING
66	4-102830	BLOCCETTO ATTACCO MOLLA	BLOCK
67	361485	BIELLA	CONNECTING ROD
68	4-103075	RONDELLA DI SPESSORAMENTO	WASHER
69	2-01137	DADO ES.B.A. M8	NORMAL AUTOLOCKING HEXAGON NUT M8
70	4-105615	PATTINO SCORRIMENTO	SLIDE
71	4-105614	LAMIERA RIPRESA GIOCO	PLATE
72	245486	KIT GUARNIZIONI CILINDRO ROTAZIONE	CYLINDER ROTATION SEALS KIT
73	262525	KIT GUARNIZIONI CIL. MOVIMENTO UT.	CYLINDER TOOL MOVING SEALS KIT
74	5-103267	KIT GUARNIZIONI CILINDRO TRASLAZIONE	CYLINDER TRANSLATION SEALS KIT
75	4-107970	INSERTO TESTINA	INSERT
76	4-135541	CAVO MICRO L. 4mt (NON INCLUSO)	MICRO CABLE L. 4mt (NOT INCLUDED)
77	4-109005	MICRO 16A	MICRO 16A
78	2-00209	RONDELLA D.4	WASHER D.4
79	361507	STELO D.15X108	STEM D.15X108
80	2-02078	VTCEI M4X30	HEXAGON SOCKET HEAD SCREW M4X30
81	4-135539	PIASTRA FISSAGGIO MICRO	MICRO BRACKET
82	4-135537	PIASTRA GUIDA CREMAGLIERA	PLATE
83	2-00312	VTCEI M6X25	HEXAGON SOCKET HEAD SCREW M6X25
84	5-122170	CILINDRO ROT. COMPLETO (DA 06/2018)	CYLINDER ASSEMBLY (SINCE 06-2018)
85	2-02676	VTBEI M4X8	SCREW M4X8
86	2-02961	VTSPIC M3X20	SCREW M3X20
87	2-01017	DADO ES.A. M3	AUTOLOCKING HEXAGON NUT M3
88	344207	RONDELLA SPESS. D.8,4X19X2	WASHER D.8,4X19X2
89	2-00896	RONDELLA D.19X34X3	WASHER D.19X34X3
90	2-00853	VTCEI M5X12	HEXAGON SOCKET HEAD SCREW M5X12
91	2-00210	RONDELLA D.5	WASHER D.5
92	2-00213	RONDELLA D.10	WASHER D.10
93	2-00713	RONDELLA D.5,5X15X1,6	WASHER D.5,5X15X1,6
94	2-01835	VSTEI M8X40	SCREW M8X40
95	4-141594	VITE SPECIALE M10X20	SPECIAL SCREW M10X20

GRUPPO TRASLAZIONE VERTICALE

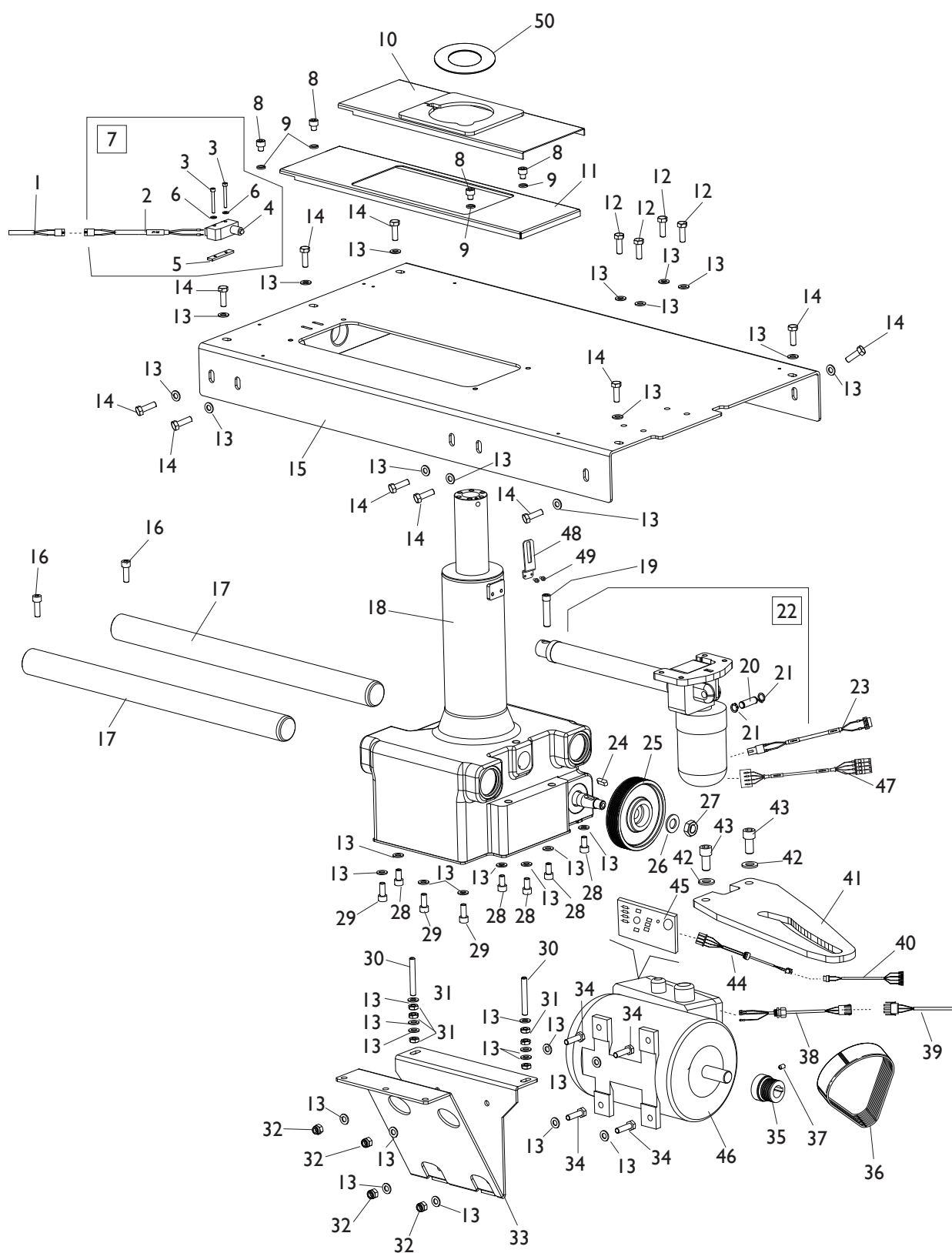
VERTICAL TRANSLATION GROUP



[TORNA AL COMPLESSIVO](#)
[RETURNS TO OVERALL](#)

Rif. Ref.	Codice Code	Descrizione	Description
1	5-102715	MOTORE TRASLAZ. VERTICALE COMPLETO	MOTOR TRANSLATON ASSEMBLY
2	4-102194	TENDICINGHIA	BELT TENSIONER
3	5-100689	CAVO COLL. SK - BRAKEY	PC BOARD CABLE - BRAKEY
4	5-100663	CAVO COLL.SK - MOTORE ASSEY	PC BOARD CABLE - ASSEY MOTOR
5	5-122229	MOTORE AUTOFRENANTE 48V D.14	BRAKE MOTOR 48V D.14
6	2-03332	VTCEI 1/2F M8X80	CIRCULAR SOCKET HEAD SCREW 1/2F M8X80
7	2-91668	VTCEI M4X30	CIRCULAR SOCKET HEAD SCREW M4X30
8	361608	LAMIERA SOSTEGNO	MICRO SUPPORT
9	5-100667	CAVO COLL.SK - ASSEY UP	PC BOARD CABLE -Y AXIS UP
10	461380	MICRO	MICROSWITCH
11	2-00209	RONDELLA D.4	WASHER D.4
12	2-01018	DADO ES.N.A. M4	NORMAL AUTOLOCKING HEXAGON NUT M4
13	5-100668	CAVO COLL.SK - ASSEY DOWN	PC BOARD CABLE - Y AXIS DOWN
14	361603	CHIOCCIOLA	SPIRAL
15	361598	ALBERO DI TRASLAZIONE	SHAFT VERTICAL TRANSLATION
16	2-03072	LINGUETTA 4X4X14	KEY 4X4X14
17	4-100630	SEMISUPPORTO CUSCINETTO PICCOLO	HALF SMALL BEARING SUPPORT
18	2-03071	CUSCINETTO RADIALE RIGIDO 17X40X12	BEARING 17X40X12
19	4-100631	SEMISUPPORTO CUSCINETTO GRANDE	HALF BIG BEARING SUPPORT
20	2-03070	CUSCINETTO OBLIQUO 17X40X17,5	BEARING 17X40X17,5
21	2-00889	SEEGER D.17	SEEGER D.17
22	3-01677	RONDELLA D.17X24X0,1	WASHER D.17X24X0,1
23	4-102438	PULEGGIA CONDOTTA Z48	PULLEY Z48
24	3-01477	CINGHIA DENTATA	TOOTHED BELT
25	434207	RONDELLA D.13X20X2	RONDELLA D.13X20X2
26	2-01276	DADO ES.B.A. M12	LOW AUTOLOCKING HEXAGON NUT M12
27	4-102630	PULEGGIA MOTRICE Z18	PULLEY Z18
28	2-02401	VSTEI M6X12	CSK SCREW SOCKET M6X12
29	2-00155	DADO ES. M6	HEXAGON NUT M6
30	2-04006	LINGUETTA 4X4X18	KEY 4X4X18
31	2-00355	VTE M5X16	HEXAGON HEAD SCREW M5X16
32	2-00210	RONDELLA D.6	WSAHER D.6
33	354588	RONDELLA D.10,5X18X1,5	WASHER D.10,5X18X1,5

GRUPPO TRASLAZIONE RUOTA WHEEL TRANSLATION GROUP

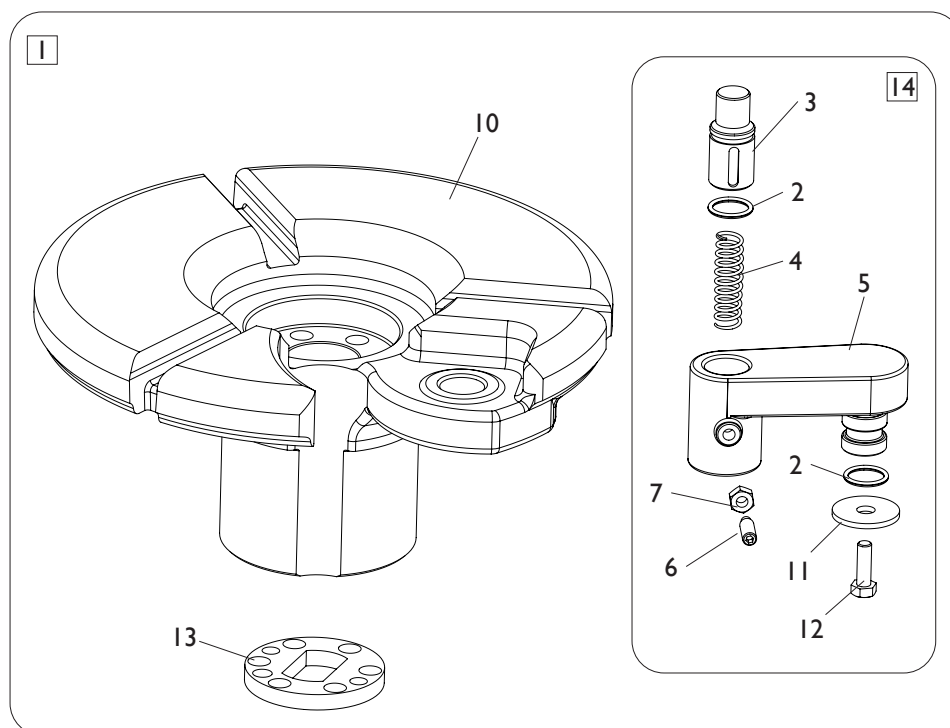
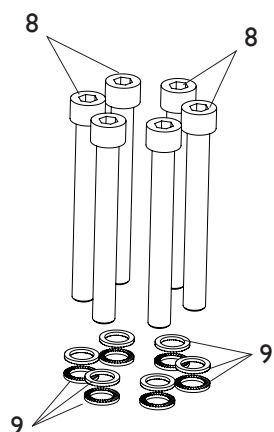


[TORNA AL COMPLESSIVO](#)
[RETURNS TO OVERALL](#)

Rif. Ref.	Codice Code	Descrizione	Description
1	5-100669	CAVO COLL.SK - MICRO AZZERAMENTO	PC BOARD CABLE - MICRO RESET
2	5-102151	CAVO MICRO AZZERAMENTO	MICRO RESET CABLE
3	2-02022	VTCEI M4X35	CIRCULAR SOCKET HEAD SCREW M4X35
4	4-106284	MICRO	MICROSWITCH
5	361554	PIASTRINA MICRO	MICRO SUPPORT
6	300072	RONDELLA D.4,25X13X2	D.4,25X13X2
7	5-102170	KIT MICRO AZZERAMENTO	KIT MICRO RESET
8	4-103071	VTCEI SPECIALE M8X8	SPECIAL CIRC. SOCKET HEAD SCREW M8X8
9	2-02779	ROSETTA D.8	WASHER D.8
10	4-101410	PROTEZIONE TRASLAZIONE	TRANSLATION PROTECTION
11	4-137494	LAMIERA INFERIORE	REAR SHEET
12	2-00372	VTE M8X16	HEXAGON SOCKET HEAD SCREW M8X16
13	2-01114	RONDELLA D.8	WASHER D.8
14	2-01131	VTE M8X22	HEXAGON SOCKET HEAD SCREW M8X22
15	4-137489/00	COPERCHIO	COVER
16	2-00321	VTCEI M8X25	CIRCULAR SOCKET HEAD SCREW M8X25
17	4-137495	GUIDA ORIZZONTALE	HORIZONTAL GUIDE
18	5-120129	RIDUTTORE COMPLETO	GEARBOX ASSEMBLY
18	5-190775	RIDUTTORE CPL. (VERS. AUTOMATICA)	GEARBOX ASSEMBLY (AUTOMATIC VERS.)
19	361552	VSTEI M12X1,25	CSK SCREW SOCKET M12X1,25
20	4-103512	PERNO ATTUATORE	ACTUATOR PIN
21	2-00023	SEEGER D.10	SEEGER D.10
22	5-124100	ATTUATORE COMPLETO	ACTUATOR ASSEMBLY
23	5-100662	CAVO COLL.SK - ATTUATORE ASSE X	PC BOARD CABLE - X AXIS ACTUATOR
24	2-01950	LINGUETTA D.6X6X18	KEY D.6X6X18
25	354082	PULEGGIA RIDUTTORE D.110	GEARBOX PULLEY D.110
26	2-00215	RONDELLA D.14	WASHER D.14
27	2-00941	DADO ES.B. M14	LOW HEXAGON NUT M14
28	2-00319	VTCEI M8X16	CIRCULAR SOCKET HEAD SCREW M8X16
29	2-00320	VTCEI M8X20	CIRCULAR SOCKET HEAD SCREW M8X20
30	2-02683	VSTEI M6X10	CSK SCREW SOCKET M6X10
31	2-00156	DADO ES.B. M8	LOW HEXAGON NUT M8
32	2-01020	DADO ES.N.A. M8	NORMAL AUTOLOCKING HEXAGON NUT M8
33	4-102396	SUPPORTO MOTORE	MOTOR SUPPORT
34	2-00322	VTCEI M8X30	CIRCULAR SOCKET HEAD SCREW M8X30
35	4-104329	PULEGGIA MOTORE	MOTOR PULLEY
36	3-00575	CINGHIA	BELT
37	2-00544	VSTEI M6X10	CSK SCREW SOCKET M6X10
38	4-111587	CAVO ALIMENTAZIONE MOTOINVETER	POWER CABLE MOTOINVERTER
39	5-105010	CAVO ALIM.MOTOINV - SK	MOTOINVERTER POWER CABLE - PC BOARD
40	5-100723	CAVO COMANDI PEDALIERA	PEDAL COMMAND CABLE
41	4-137498	MOVIMENTAZIONE A CAMMA	HANDLING CAM
42	2-00214	RONDELLA D.12	WASHER D.12
43	2-03144	VTCEI M12X1,25X25	CIRC. SOCKET HEAD SCREW M12x1,25x25
44	4-109895	CAVO COMANDI MOTORE	MOTOR COMMAND CABLE
45	4-115395	SCHEDA MOTOINVERTER 230V	MOTOINVERTER PC BOARD 230V
45	4-111585	SCHEDA MOTOINVERTER 115V	MOTOINVERTER PC BOARD 115V
46	5-104966	MOTOINVERTER CON CAVI 230V	MOTOINVERTER ASSEMBLY 230V
46	5-103599	MOTOINVERTER CON CAVI 115V	MOTOINVERTER ASSEMBLY 115V
47	5-100664	CAVO COLL.SK - ENCODER ATTUATORE	PC BOARD CABLE - ACTUATOR ENCODER
48	4-102783	ANTIROT. (VERS. AUTOMATICA)	BRACKET (AUTOMATIC VERS.)
49	2-00853	VTCEI M5X12	HEX. SOCKET HEAD SCREW M5X12
50	4-100767	COPERTURA	COVER

GRUPPO AUTOCENTRANTE

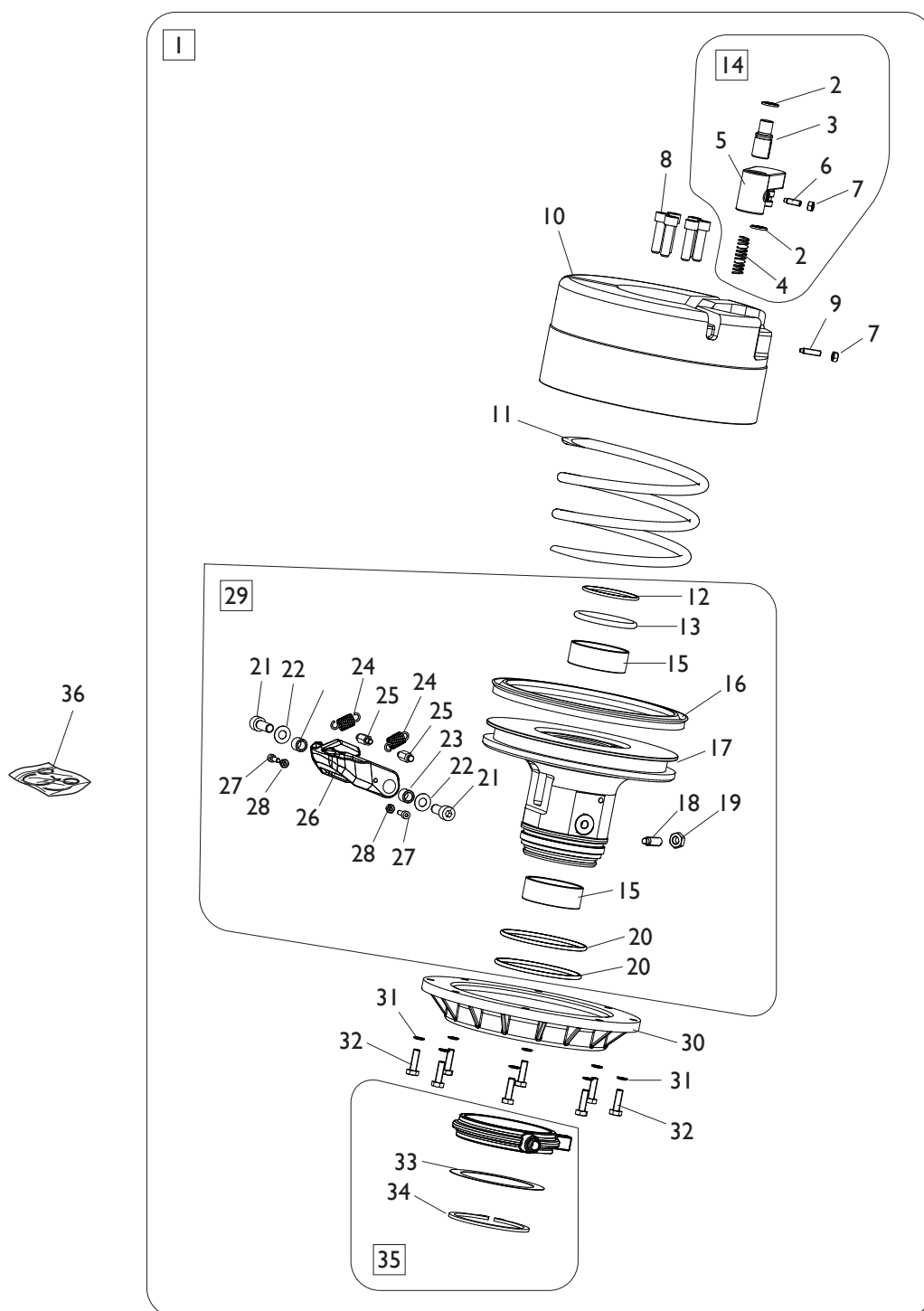
TURNTABLE GROUP



[TORNA AL COMPLESSIVO](#)
[RETURNS TO OVERALL](#)

Rif. Ref.	Codice Code	Descrizione	Description
1	5-101199	AUTOCENTRANTE COMPLETO	TURNTABLE ASSEMBLY
2	424630	OR D.12,42X1,78	O-RING D.12,42X1,78
3	4-102326	PERNO TRASCINATORE	PIN
4	4-102331	MOLLA PERNO TRASCINATORE	PIN SPRING
5	4-103143	LEVA	LEVER
6	2-02560	VSTEI M5X16	CSK SCREW SOCKET M5X16
7	2-00676	DADO ES.N. M5	NORMAL HEXAGON NUT M5
8	4-104811	VTCEI M8X70	CIRCULAR SOCKET HEAD SCREW M8X70
9	4-102752	RONDELLA ANTISVITAMENTO D.8	WASHER D.8
10	4-103152	CENTRAGGIO RUOTE	TURNTABLE
11	434168	RONDELLA D.6,6X24X2	WASHER D.6,6X24X2
12	2-00355	VTE M5X16	HEXAGON SOCKET HEAD SCREW M5X16
13	4-103142	RONDELLA AGGANCIO RAPIDO	WASHER
14	5-102707	KIT LEVA CON PERNO	LEVER KIT

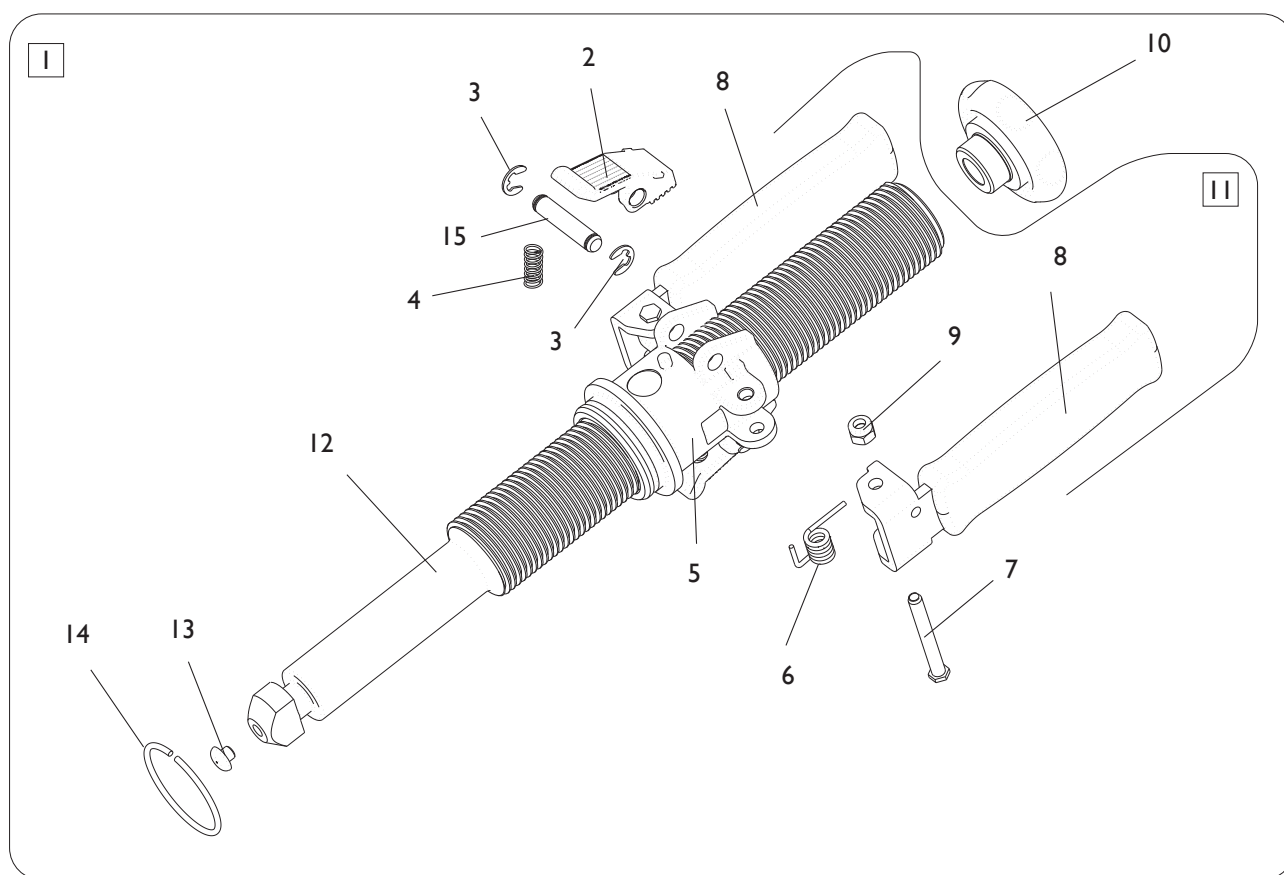
GR. AUTOCENTRANTE (VERS. AUTOMATICA) TURNTABLE GROUP (AUTOMATIC VERSION)



[TORNA AL COMPLESSIVO
RETURNS TO OVERALL](#)

Rif. Ref.	Codice Code	Descrizione	Description
1	5-102705	AUTOCENTRANTE COMPLETO	TURNTABLE ASSEMBLY
2	424630	OR D.12,42X1,78	O-RING D.12,42X1,78
3	4-102326	PERNO TRASCINATORE	PIN
4	4-102331	MOLLA PERNO TRASCINATORE	PIN SPRING
5	4-103143	LEVA	LEVER
6	2-02560	VSTEI M5X16	CSK SCREW SOCKET M5X16
7	2-00676	DADO ES.N. M5	NORMAL HEXAGON NUT M5
8	4-102325	VTCEI SPECIALE M8X30	SPEC. HEX. HEAD SCREW M8X70
9	2-03337	VSTEI M5X20	SCREW M5X20
10	4-102070	CENTRAGGIO RUOTE	TURNTABLE
11	4-102327	MOLLA COMPR. D.143X9X110	COMPRESSOR SPRING D.143X9X110
12	3-01150	O-RING D.48,89X2,62	O-RING D.48,89X2,62
13	3-01152	GUARNIZIONE M5 D.60X50X5	SEAL M5 D.60X50X5
14	5-102707	KIT LEVA CON PERNO	LEVER KIT
15	3-00647	BOCCOLA D.50X20	BUSH D.50X20
16	433339	GUARNIZIONE D.184X165X11,11	SEAL D.184X165X11,11
17	4-106066	PISTONE D.184X117	PISTON D.184X117
18	2-01322	VTSTEI M8X25	SCREW M8X25
19	2-00156	DADO ES. M8	HEXAGON NUT M8
20	438689	O-RING D.75,80X3,53	O-RING D.75,80X3,53
21	2-03348	VTCEI M8X22	HEX. SOCKET HEAD SCREW M8X22
22	309358	RONDELLA D.8X16,5X0,5	WASHER D.8X16,5X0,5
23	361278	DISTANZIALE D.11,85X8X10	SPACER D.11,85X8X10
24	3-10008	MOLLA TRAZIONE	SPRING
25	4-130262	GANCIO ATTACCO MOLLA	SPRING HOOK
26	4-106063	CRICCHETTO	HOOK
27	2-00733	VTCEI M4X12	HEX. SOCKET HEAD SCREW M4X12
28	2-00143	DADO ES. M4	HEXAGON NUT M4
29	5-102683	KIT PISTONE	PISTON KIT
30	4-101891	COPERCHIO CILINDRO	CYLINDER COVER
31	4-105166	RONDELLA D.6,4X10X1,3	WASHER D.6,4X10X1,3
32	2-03471	VTE M6X20	HEXAGON HEAD SCREW M6X20
33	4-104408	RONDELLA D.70X90X0,5	WASHER D.70X90X0,5
34	2-71590	SEEGER D.70	SEEGER D.70
35	5-102706	RACCORDO GIREVOLE	ROTATING JOINT
36	5-102708	KIT GUARNIZIONI CILINDRO	CYLINDER SEALS KIT

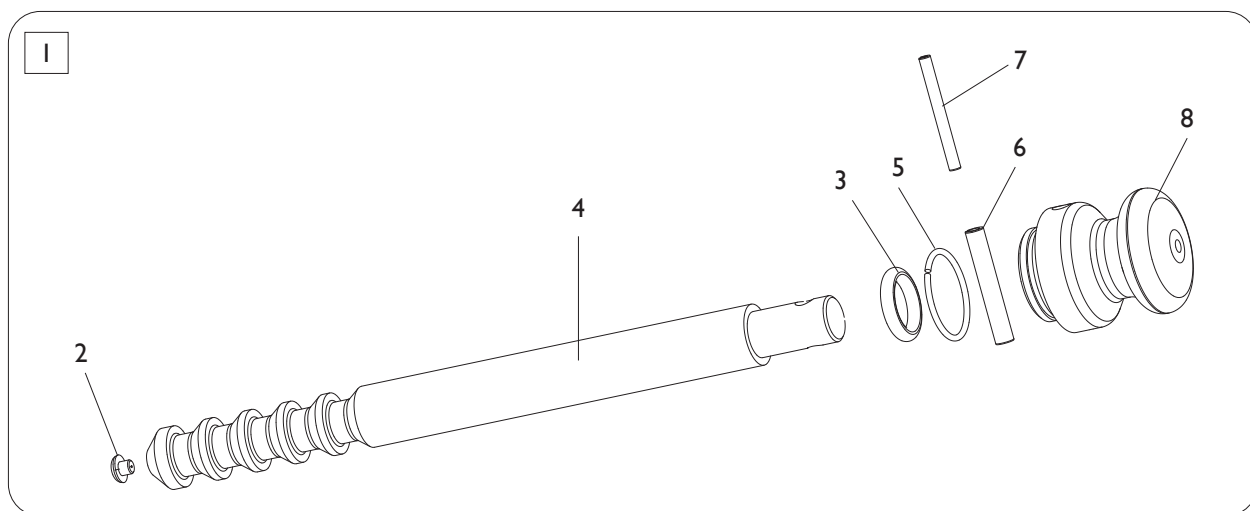
MANIGLIA BLOCCAGGIO RUOTA HANDLE LOCKING WHEEL



[TORNA AL COMPLESSIVO](#)
[RETURNS TO OVERALL](#)

Rif. Ref.	Codice Code	Descrizione	Description
1	5-101197	MANIGLIA BLOCCAGGIO RUOTA	HANDLE LOCKING WHEEL ASSEMBLY
2	4-104822	CRICCHETTO GHIERA D.8	CLAMPING NUT
3	2-00021	SEEGER D.8	SEEGER D.8
4	4-103675	MOLLA D.8X20X1	SPRING D.8X20X1
5	4-103226	CORPO GHIERA SERRAGGIO	BODY
6	4-103673	MOLLA RICHIAMO LEVA	LEVER RETURN SPRING
7	4-104809	PERNO FISSAGGIO LEVA MANIGLIA	FIXING PIN LEVER HANDLE
8	5-101931	MANOPOLA CON LEVA	HANDLE WITH LEVER
9	2-01257	DADO ES.N.A. M6	NORMAL AUTOLOCKING HEXAGON NUT M6
10	4-103669	MANOPOLA D.60 M24 NERA	BLACK HANDLE D.60 M24
11	5-103532	GHIERA DI SERRAGGIO	CLAMPING NUT
12	4-103668	BARRA BLOCCAGGIO RUOTA	LOCKING WHEEL BAR
13	461560	PROTEZIONE	RUBBER
14	4-119835	ANELLO TONDO D.50X2,5	RING D.50X2,5
15	4-104810	PERNO	PIN

MANIGLIA BLOCCAGGIO RUOTA (VERS. AUTOMATICA) HANDLE LOCKING WHEEL (AUTOMATIC VERSION)

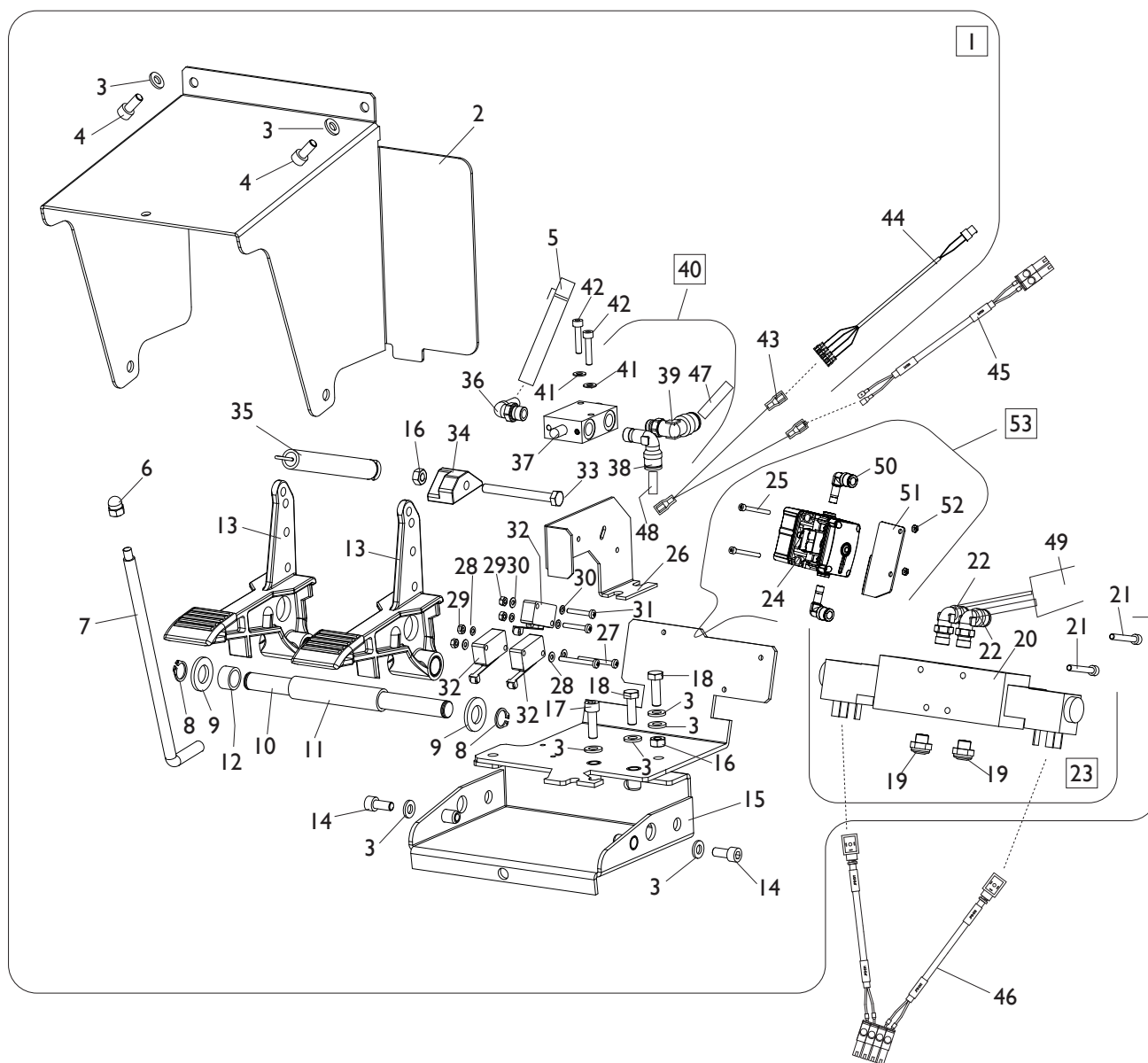


[TORNA AL COMPLESSIVO](#)
[RETURNS TO OVERALL](#)

Rif. Ref.	Codice Code	Descrizione	Description
1	5-100683	MANIGLIA BLOCCAGGIO RUOTA	HANDLE LOCKING WHEEL ASSEMBLY
2	461560	PROTEZIONE	RUBBER
3	3-01164	O-RING D.20X6	O-RING D.20X6
4	4-102345	BARRA D.26,5	BAR D.26,5
5	2-03236	SEEGER D.40	SEEGER D.40
6	2-01932	SPINA D.8X55	PIN D.8X55
7	2-02896	SPINA D.5X55	PIN D.5X55
8	362464	IMPUGNATURA	KNOB
9	263436	PROLUNGA MANIGLIA	HANDLE EXTENTION

GRUPPO PEDALIERA

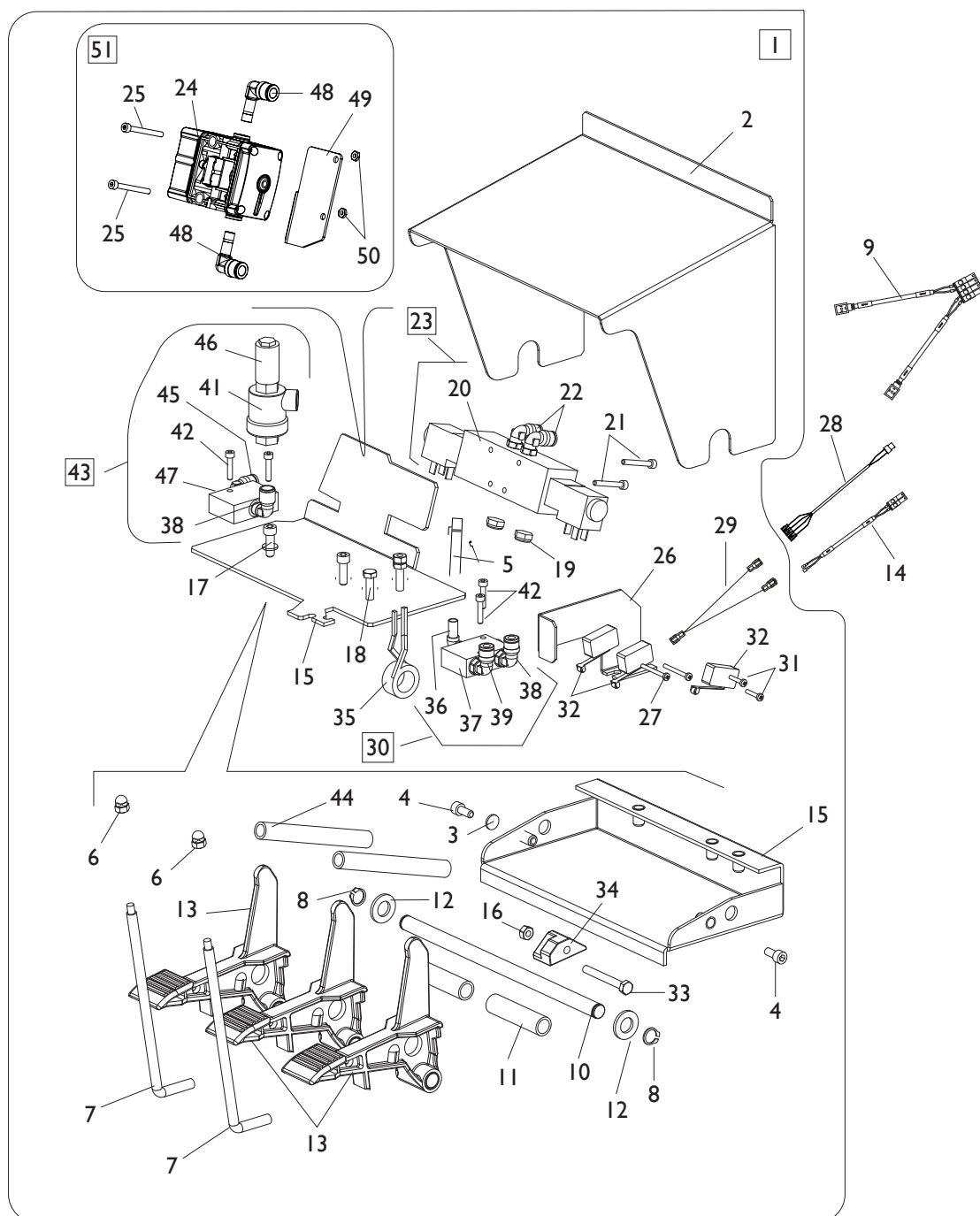
PEDAL GROUP



[TORNA AL COMPLESSIVO](#)
[RETURNS TO OVERALL](#)

Rif. Ref.	Codice Code	Descrizione	Description
1	5-105946	PEDALIERA COMANDI COMPLETA	PEDAL ASSEMBLY
2	4-118200	COPERCHIO PEDALIERA	PEDAL COVER
3	2-00211	RONDELLA D.6	WASHER D.6
4	2-00309	VTCEI M6X16	CIRCULAR SOCKET HEAD SCREW M6X16
5	5-100129	TUBO DI GONFIAGGIO	INFLATING HOSE
6	2-00104	DADO ES.CIECO M6	HEXAGON NUT M6
7	361537	TONDO D.8	PIN D.8
8	2-00025	ANELLO D.12	SEEGER D.12
9	2-00214	RONDELLA D.14	WASHER D.14
10	4-103656	PERNO	PIN
11	340313	DISTANZIALE PEDALI	PEDALS SPACER
12	4-103658	DISTANZIALE FORATO D.12,1X16X9	SPACER D.12,1X16X9
13	5-102714	PEDALE	PEDAL
14	2-00728	VTCEI M6X14	CIRCULAR SOCKET HEAD SCREW M6X14
15	5-120136	BASAMENTO PEDALIERA	PEDAL BASE
16	2-00150	DADO ES.N. M6	NORMAL HEXAGON NUT M6
17	2-00310	VTCEI M6X20	CIRCULAR SOCKET HEAD SCREW M6X20
18	2-00362	VTE M6X20	HEXAGON SOCKET HEAD SCREW M6X20
19	3-00181	SILENZIATORE 1/8	SILENCER 1/8
20	3-01168	ELETTROVALVOLA	ELECTRIC VALVE
21	2-91668	VTCEI M4X30	CIRCULAR SOCKET HEAD SCREW M4X30
22	3-00053	RACCPN-LO-G1/8G-T6	FITTING 1/8
23	5-100625	VALVOLA MOVIMENTO UTENSILE	VALVE TOOL MOVEMENT
24	3-03313	LIMITATORE DI GONFIAGGIO	LIMITER INFLATION
25	2-00851	VTCEI 1/2F M4X40	CIRCULAR SOCKET HEAD SCREW 1/2F M4X40
26	361524	LAMIERA SUPPORTO MICRO	MICRO SUPPORT
27	2-00578	VTCIC M3X30	SCREW M3X30
28	2-00208	RONDELLA D.3	WASHER D.3
29	2-00124	DADO ES.A. M3	AUTOLOCKING HEXAGON NUT M3
30	2-71547	ROSETTA D.3	WASHER D.3
31	2-00576	VTCIC M3X20	SCREW M3X20
32	440874	MICRO	MICROSWITCH
33	2-00369	VTE M6X60	HEXAGON SOCKET HEAD SCREW M6X60
34	461535	BLOCCHETTO MICRO	BLOCK
35	4-109664	MOLLA COMANDO INTERRUETTORE	COMMAND SPRING
36	3-01176	RACCPN-RESCA-L-G1/8-T6	RESCA FITTING 1/8
37	3-01178	VALVOLA	VALVE
38	3-00218	RACCPN-L-G1/8C-T8	FITTING 1/8
39	3-00049	RACCPN-LO-G1/8G-T8	FITTING 1/8
40	5-100628	VALVOLA DI GONFIAGGIO	INFLATING VALVE
41	2-00209	RONDELLA D.4	WASHER D.4
42	2-00291	VTCEI M4X20	CIRCULAR SOCKET HEAD SCREW M4X20
43	4-101698	CAVO PONTE	CABLE
44	5-100723	CAVO COMANDI PEDALIERA	PEDAL COMMAND CABLE
45	5-100722	CAVO ROTAZIONE AUTOCENTRANTE	CABLE TURNTABLE ROTATION
46	5-100660	CAVO COLL.SK - EV1/EV2	PC BOARD CABLE - EV1/EV2
47	358763	TUBO D.8 L.100MM	HOSE D.8 L.100MM
48	319369	TUBO D.8 L.340MM	HOSE D.8 L.340MM
49	5-106060	TRECCIA TUBI PNEUMATICI	BRAIDED PNEUMATIC TUBES
50	3-03504	RACCPN-GOMITO-T-T8	FITTING T-T8
51	4-121270	STAFFA VALVOLA GONFIAGGIO	BRACKET
52	2-02804	DADO ES. M4	HEXAGON NUT M4
53	5-107578	LIMITATORE DI GONFIAGGIO CPL.	LIMITER INFLATION ASSEMBLY

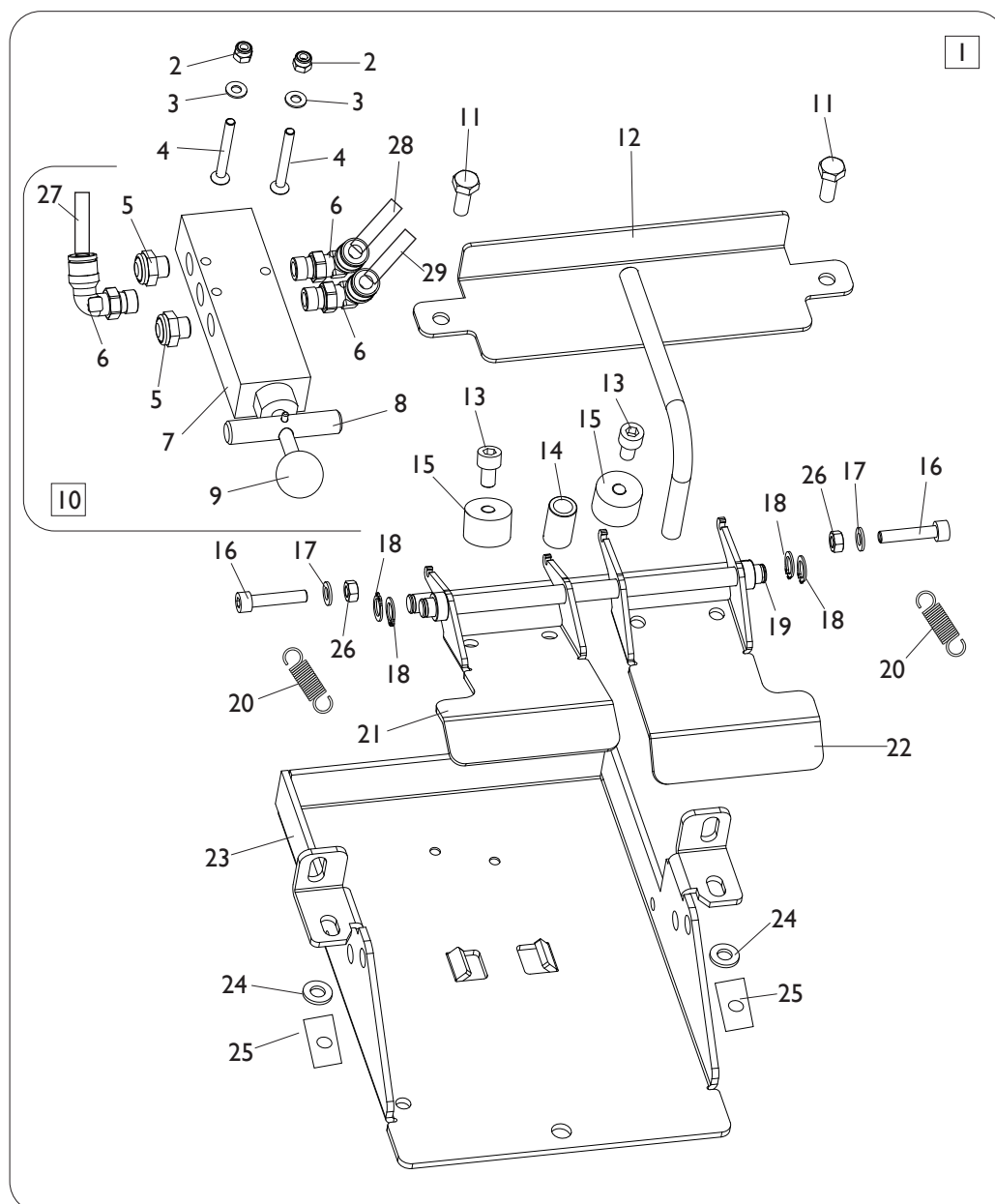
GRUPPO PEDALIERA (VERS. AUTOMATICA) PEDAL GROUP (AUTOMATIC VERSION)



[TORNA AL COMPLESSIVO](#)
[RETURNS TO OVERALL](#)

Rif. Ref.	Codice Code	Descrizione	Description
1	5-100735	PEDALIERA COMANDI COMPLETA	PEDAL ASSEMBLY
2	361536	COPERCHIO PEDALIERA	PEDAL COVER
3	2-00211	RONDELLA D.6	WASHER D.6
4	2-00309	VTCEI M6X16	CIRC. SOCKET HEAD SCREW M6X16
5	5-100129	TUBO DI GONFIAGGIO	INFLATING HOSE
6	2-00104	DADO ES.CIECO M6	HEXAGON NUT M6
7	361537	TONDO D.8	PIN D.8
8	2-00025	ANELLO D.12	SEGER D.12
9	5-100660	CAVO COLL.SK - EV1/EV2	PC BOARD CABLE - EV1/EV2
10	4-102179	PERNO	PIN
11	361534	DISTANZIALE PEDALI D.16X64	PEDALS SPACER D.16X64
12	2-00214	RONDELLA D.14	WASHER D.14
13	5-102714	PEDALE	PEDAL
14	5-100722	CAVO ROT.AUTOCENTRANTE	CABLE TURNTABLE ROTATION
15	5-101167	BASAMENTO PEDALIERA	PEDAL BASE
16	2-00150	DADO ES.N. M6	NORMAL HEXAGON NUT M6
17	2-00310	VTCEI M6X20	CIRC. SOCKET HEAD SCREW M6X20
18	2-00362	VTE M6X20	HEX. SOCKET HEAD SCREW M6X20
19	3-00181	SILENZIATORE 1/8	SILENCER 1/8
20	3-01168	ELETTROVALVOLA	ELECTRIC VALVE
21	2-91668	VTCEI M4X30	CIRC. SOCKET HEAD SCREW M4X30
22	3-00053	RACCPN-LO-G1/8G-T6	FITTING 1/8
23	5-100625	VALVOLA MOVIMENTO UTENSILE	VALVE TOOL MOVEMENT
24	3-03313	LIMITATORE DI GONFIAGGIO	LIMITER INFLATION
25	2-00851	VTCEI 1/2F M4X40	CIRC. HEAD SCREW 1/2F M4X40
26	361524	LAMIERA SUPPORTO MICRO	MICRO SUPPORT
27	2-00578	VTCIC M3X30	SCREW M3X30
28	5-100723	CAVO COMANDI PEDALIERA	PEDAL COMMAND CABLE
29	4-101698	CAVO PONTE	CABLE
30	5-100628	VALVOLA DI GONFIAGGIO	INFLATING VALVE
31	2-00576	VTCIC M3X20	SCREW M3X20
32	440874	MICRO	MICROSWITCH
33	2-00368	VTE M6X50	HEX. SOCKET HEAD SCREW M6X60
34	461535	BLOCCETTO MICRO	BLOCK
35	4-109664	MOLLA COMANDO INTERRUETTORE	COMMAND SPRING
36	3-01176	RACCPN-RESCA-L-G1/8-T6	RESCA FITTING 1/8
37	3-01178	VALVOLA	VALVE
38	3-00218	RACCPN-L-G1/8C-T8	FITTING 1/8
39	3-00049	RACCPN-LO-G1/8G-T8	FITTING 1/8
41	3-00317	VALVOLA G1/4	VALVE G1/4
42	2-00291	VTCEI M4X20	CIRC. SOCKET HEAD SCREW M4X20
43	5-102713	VALVOLA SCARICO RAPIDO	VALVE ASSEMBLY
44	410628	MOLLA D.14X2X105	SPRING D.14X2X105
45	3-00138	RACCPN-L-G1/8"C- G1/8" M/F	L-FITTING-G1/8"C- G1/8" M/F
46	3-00186	SILENZATORE G1/4	SILENCER G1/4
47	3-00365	VALVOLA 1/8	VALVE 1/8
48	3-03504	RACCPN-GOMITO-T-T-T8	FITTING T-T-T8
49	4-121270	STAFFA VALVOLA GONFIAGGIO	BRACKET
50	2-02804	DADO ES. M4	HEXAGON NUT M4
51	5-107578	LIMITATORE DI GONFIAGGIO CPL.	LIMITER INFLATION ASSEMBLY

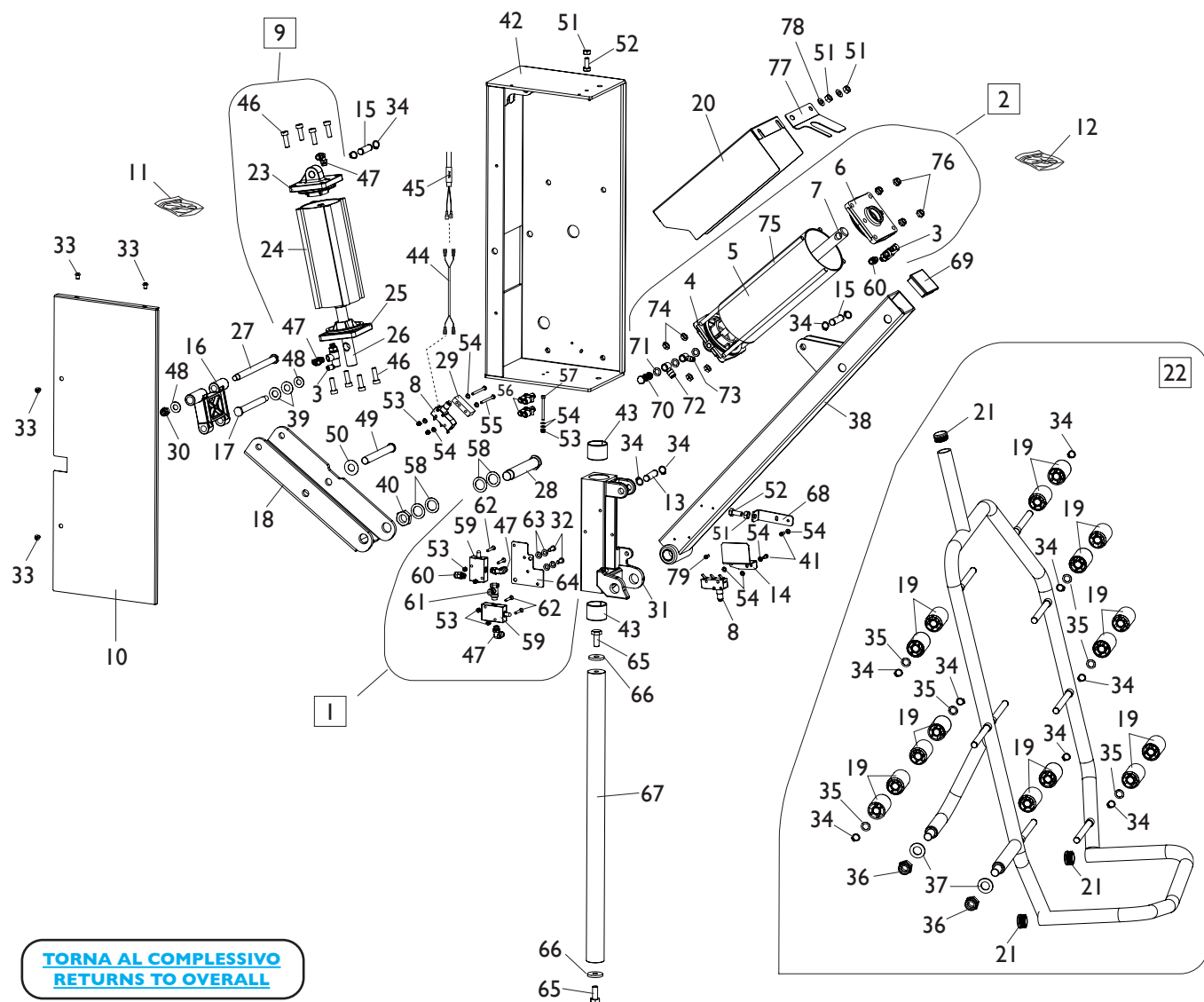
GRUPPO PEDALIERA SOLLEVATORE PEDAL LIFTER GROUP



[TORNA AL COMPLESSIVO
RETURNS TO OVERALL](#)

Rif. Ref.	Codice Code	Descrizione	Description
1	5-105954	PEDALIERA SOLLEVATORE COMPLETA	PEDAL LIFTER ASSEMBLY
2	2-01018	DADO ES.N.A. M4	NORMAL AUTOLOCKING HEXAGON NUT M8
3	2-00209	RONDELLA D.4	WASHER D.4
4	2-01212	VTSPEI M4X35	CSK SCREW FLAT SOCKET M4X35
5	3-00181	SILENZIATORE 1/8	SILENCER 1/8
6	3-00053	RACCPN-LO-G1/8G-T6	FITTING 1/8
7	3-01642	VALVOLA SOLLEVATORE	LIFTER VALVE
8	4-103750	PERNO AZIONAMENTO VALVOLA	VALVE PIN
9	3-03029	POMOLO	HANDLE
10	5-102696	VALVOLA SOLLEVATORE COMPLETA	LIFETR VALVE ASSEMBLY
11	2-00361	VTE M6X16	HEXAGON SOCKET HEAD SCREW M6X16
12	4-118125	LAMIERA COPERTURA PEDALE	PEDAL COVER
13	2-00308	VTCEI M6X10	CIRCULAR SOCKET HEAD SCREW M6X10
14	4-103746	DISTANZIALE FORATO D.12X8,2X20	SPACER D.12X8,2X20
15	441675	ANTIVIBRANTE 20X13 M6X6	ANTIVIBRATION 20X13 M6X6
16	2-00299	VTCEI M5X25	CIRCULAR SOCKET HEAD SCREW M5X25
17	2-00210	RONDELLA D.5	WASHER D.5
18	2-00021	SEEGER D.8	SEEGER D.8
19	4-103742	PERNO	PIN
20	4-104551	MOLLA D.2X12X28	SPRING D.2X12X28
21	4-104835	PEDALE SOLLEVATORE SX	PEDAL LEFT
22	4-104836	PEDALE SOLLEVATORE DX	PEDAL RIGHT
23	4-118124	BASAMENTO PEDALIERA	PEDAL BASE
24	2-00211	RONDELLA D.6	WASHER D.6
25	457973	INSERTO M6	INSERT M6
26	2-00676	DADO ES.N. M5	NORMAL HEXAGON NUT M5
27	338670	TUDO D.6 L.320MM	HOSE D.6 L.320MM
28	315269	TUBO D.6 L.900MM	HOSE D.6 L.900MM
29	4-104861	TUBO D.6 GIALLO L.980MM	YELLOW HOSE D.6 L.980MM

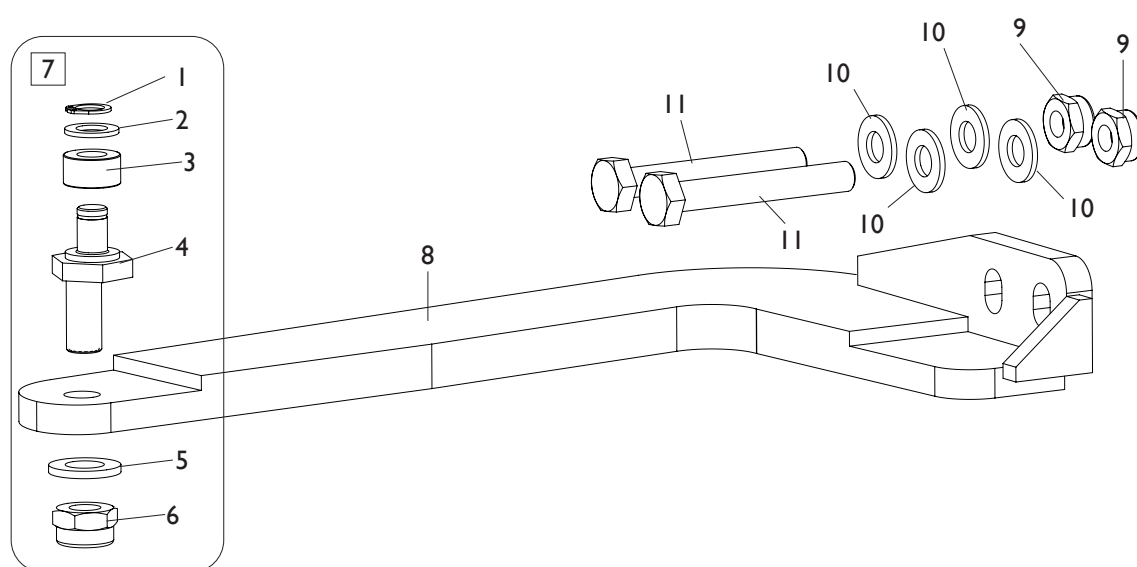
GRUPPO SOLLEVATORE LIFTER GROUP



Ref.	Code	Descrizione	Description
1	5-101522	GRUPPO VALVOLE	VALVES ASSEMBLY
2	5-101184	CILINDRO D.95X217,5	CYLINDER ASSEMBLY D.95X217,5
3	3-01175	VLAVOLA PILOTA	VALVE
4	4-116980	FLANGIA POST. D.95	REAR FLANGE D.95
5	4-116999	CAMICIA D.95X256,5	LINER D.95X256,5
6	5-105114	FLANGIA ANT. D.95	FRONT FLANGE D.95
7	4-116979	STELO D.20X364	STEM D.20X364
8	461380	MICRO 16A	MICRO 16A
9	5-101529	CILINDRO D.75X158	CYLINDER D.75X158
10	361356	LAMIERA DI CHIUSURA	METAL SHEET
11	262382	KIT GUARNIZIONI CILINDRO D.75	SEALS KIT FOR CYLINDER D.75
12	241484	KIT GUARNIZIONI CILINDRO D.95	SEALS KIT FOR CYLINDER D.95
13	361350	PERNO FLANGIA	FLANGE PIN
14	361345	LAMIERA SUPPORTO MICRO	MICRO PLATE
15	361349	PERNO STELO	STEM PIN
16	4-100627	BIELLA CORTA	SHORT TRACE
17	361348	PERNO FULCRO D.12	FULCRUM PIN D.12
18	361333	BIELLA	TRACE
19	4-103619	RULLO SOLLEVATORE	ROLLER

Ref.	Code	Descrizione	Description
20	4-103618	LAMIERA PROTEZIONE	CYLINDER COVER
21	456036	TAPPO TONDO D.25 H.14	ROUND CAP D.25 H.14
22	5-101241	SUPPORTO RUOTA CPL.	WHEEL SUPPORT ASSEMBLY
23	4-130464	FLANGIA POST. D.81X81X56,5	REAR FLANGE D.81X81X56,5
24	4-130461	CAMICIA D.75X201	LINER D.75X201
25	5-121316	FLANGIA ANT. D.81X81X32,5	FRONT FLANGE D.81X81X32,5
26	4-130458	STELO D.20X327,5	STEM D.20X327,5
27	361353	PERNO	PIN
28	361346	PERNO FULCRO D.20	FULCRUM PIN D.20
29	361371	PIASTRA DISTANZIALE 45X20	SPACER 45X20
30	422289	DADO ES.A. M10	AUTOLOCKING HEXAGON NUT M10
31	261732	SUPPORTO CON BOCCOLE	SUPPORT WITH BUSH
32	2-02155	VTBEI M6X16	SCREW M6X16
33	2-02151	VTBEI M6X8	SCREW M6X8
34	2-00025	SEEGER D.12	SEEGER D.12
35	315274	RONDELLA D.12X18X0,5	WASHER D.12X18X0,5
36	2-71526	DADO ES.A. M16	AUTOLOCKING HEAXAGON NUT M16
37	2-01045	RONDELLA D.17	WASHER D.17
38	4-103621	TUBO SOLLEVATORE	LIFTER ARM
39	462117	RONDELLA D.12X24X0,5	WASHER D.12X24X0,5
40	2-01092	DADO ES. M18X1,5	HEXAGO NUT M18X1,5
41	2-71389	VTE 1/2F M4X45	HEXAGON HEAD SCREW 1/2F M4X45
42	261370	LAMIERA TELAIO	BODY
43	3-00623	BOCCOLA D.35X39X30	BUSH D.35X39X30
44	262169	CAVO 2X1 L.1000mm	CABLE 2X1 L.1000mm
45	5-100666	CAVO COLL. SK - MICRO SOLLEVATORE	PC BOARD CABLE - MICRO LIFTER
46	2-02301	VTCEI B. M8X25	HEX. SOCKET HEAD SCREW M8X25
47	3-00053	RACCPN-LO- G1/8-T6	LO-FITTING-G1/8-T6
48	2-00213	RONDELLA D.10	WASHER D.10
49	361347	PERNO FULCRO D.14	FULCRUM PIN D.14
50	354594	RONDELLA D.14,2X30X1	WASHER D.14,2X30X1
51	2-00151	DADO ES. M8	HEXAGON NUT M8
52	2-00373	VTE M8X20	HEXAGON HEAD SCREW M8X20
53	2-01018	DADO ES.A. M4	AUTOLOCKING HEX. NUT M4
54	2-00209	RONDELLA D.4	WASHER D.4
55	2-02207	VTE M4X50	HEXAGON HEAD SCREW M4X50
56	3-01866	RACCPN-Y-T6-PLASTICA	Y-PLASTIC FITTING-T6
57	2-02588	VTCEI M4X35	HEX. SOCKET HEAD SCREW M4X35
58	319921	RONDELLA D.20X30X0,3	WASHER D.20X30X0,3
59	3-01865	VALVOLA	VALVE
60	3-00461	RACCPN-D-G1/8G-T6	D-FITTING-G1/8G-T6
61	4-104740	REGOLATORE DI FLUSSO G1/8	FLOW REGULATOR G1/8
62	2-02637	VTSPFI M4X25	SCREW M4X25
63	2-00211	RONDELLA D.6	WASHER D.6
64	4-104737	LAMIERA FISS.VALVOLE	PLATE
65	2-00380	VTE M10X25	HEXAGON HEAD SCREW M10X25
66	312873	RONDELLA D.10X30X4	WASHER D.10X30X4
67	361339	BARRA VERTICALE	BAR
68	4-104741	LAMIERA MICRO	PLATE
69	460854	TAPPO QUADRO 50X14	CAP 50X14
70	3-00075	VITE FORATA DOPPIA G1/8	SCREW TWO HOLES G1/8
71	3-00451	RONDELLA ALLUMINIO 1/8	ALUMINIUM WASHER 1/8
72	3-00515	RACCPN-ANELLO-G1/8-T6	FITTING-G1/8-T6
73	3-00514	RACCPN-ANELLO-G1/8-T4	FITTING-G1/8-T4
74	2-00156	DADO ES. M8	HEXAGON NUT M8
75	4-116978	TIRANTE D.7X313 M8	TIE ROD D.7X313 M8
76	2-01137	DADO ES.A. M8	AUTOLOCKING HEXAGON NUT M8
77	4-105510	LAMIERA PROT. CILINDRO	PLATE
78	2-00212	RONDELLA D.8	WASHER D.8
79	2-00289	VTCEI M4X10	HEXAGON SOCKET HEAD SCREW M4X10

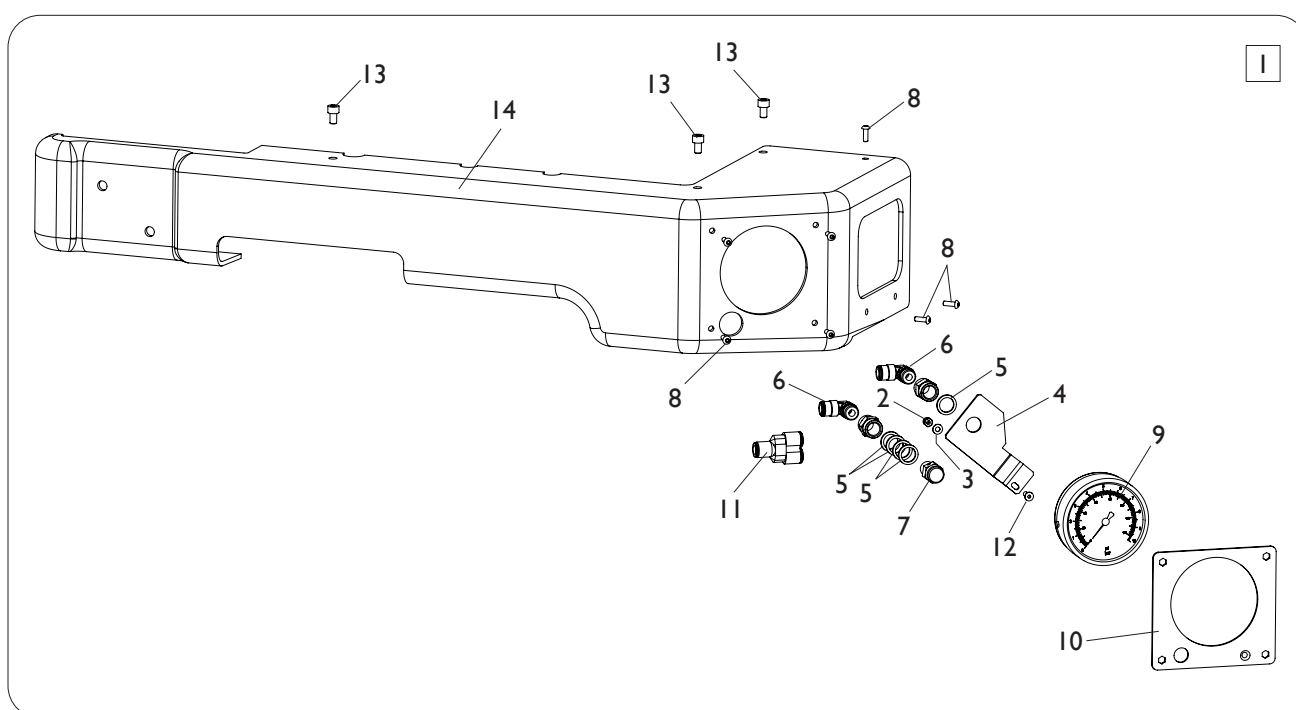
GRUPPO ROTAZIONE STALLONATORE BEAD BREAKER ROTATION GROUP



[TORNA AL COMPLESSIVO](#)
[RETURNS TO OVERALL](#)

Rif. Ref.	Codice Code	Descrizione	Description
1	2-00023	SEEGER D.10	SEEGER D.10
2	2-00214	RONDELLA D.12	WASHER D.12
3	2-03061	ROTELLA	ROLLER
4	361308	ECCENTRICO	ECCENTRIC
5	354588	RONDELLA D.10,5X18X1,5	WASHER D.10,5X18X1,5
6	2-01276	DADO ES.B.A. M12	LOW AUTOLOCKING HEXAGON NUT M12
7	262387	ECCENTRICO COMPLETO	ECCENTRIC ASSEMBLY
8	4-100337	BRACCIO ROTAZIONE	ROTATION ARM
9	2-71525	DADO ES.B.A. M10	LOW AUTOLOCKING HEXAGON NUT M10
10	2-02494	RONDELLA D.10	WASHER D.10
11	2-03157	VTE M10X70	HEXAGON SOCKET HEAD SCREW M10X70

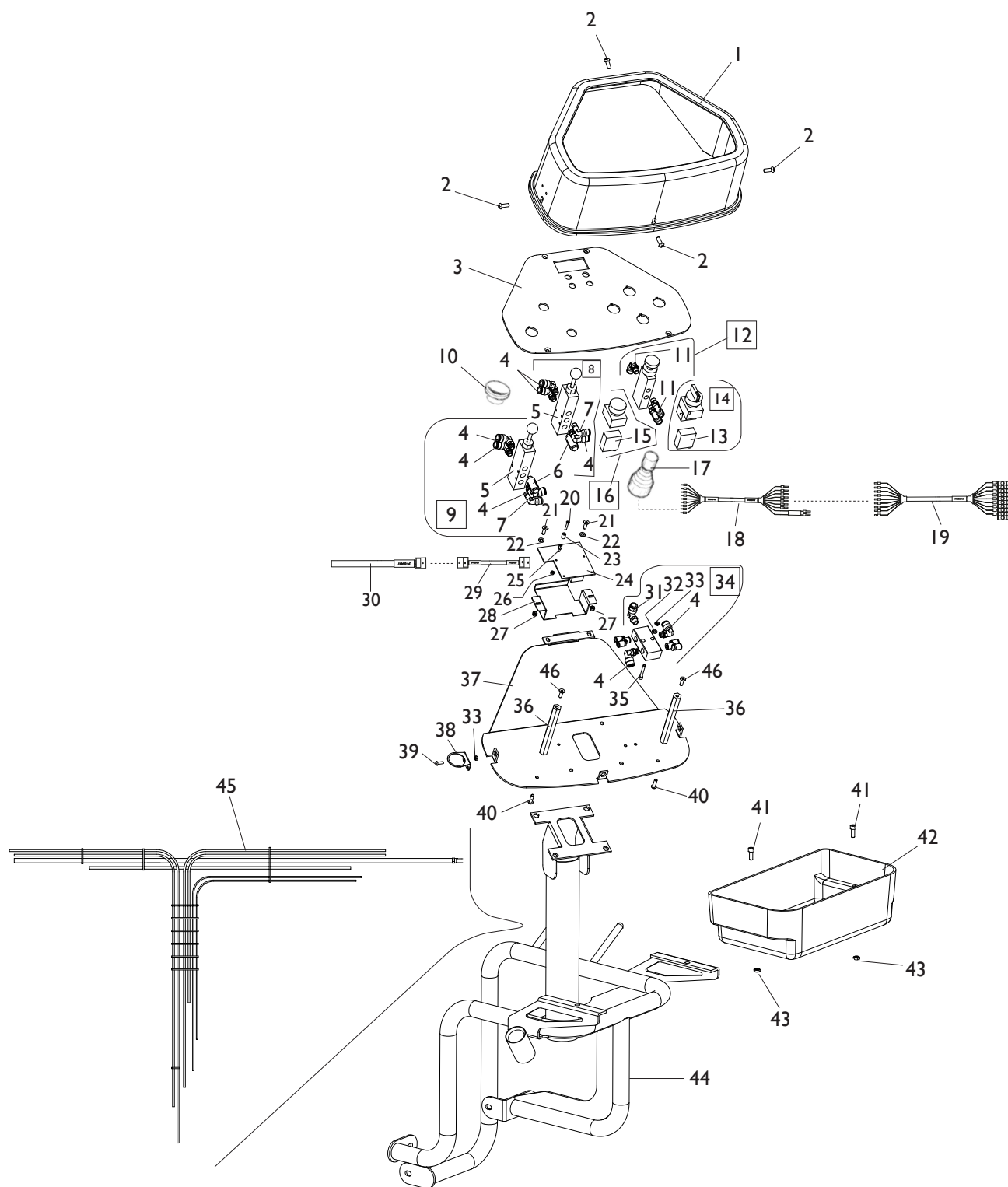
GRUPPO MANOMETRO PRESSURE GAUGE GROUP



[TORNA AL COMPLESSIVO](#)
[RETURNS TO OVERALL](#)

Rif. Ref.	Codice Code	Descrizione	Description
1	5-123097/00	GRUPPO MANOMETRO BAR/PSI	PRESSURE GAUGE BAR/PSI PRESSURE
1	5-123098/00	GRUPPO MANOMETRO BAR	PRESSURE GAUGE BAR ASSEMBLY
2	2-01018	DADO ES.N.A. M4	NORMAL AUTOLOCKING HEXAGON NUT M8
3	2-00209	RONDELLA D.4	WASHER D.4
4	4-112449	SUPPORTO MANOMETRO	PRESSURE GAUGE SUPPORT
5	3-00449	RONDELLA IN ALLUMINIO 1/4	WASHER 1/4
6	3-00055	RACCPN-LO-G1/4G-T8	FITTING 1/4
7	235463	VALVOLA DI SGONFIAGGIO	DEFLATION VALVE
8	2-02146	VTBEI M4X12	ROUNDED HEAD SCREW SOCKET M4X12
9	3-00486	MANOMETRO BAR	PRESSURE GAUGE BAR
9	3-00490	MANOMETRO BAR/PSI	PREUSSRE GAUGE BAR/PSI
10	5-124148	LAMIERA SUPPORTO MANOMETRO	PRESSURE GAUGE COVER
11	3-00048	RACCPN-Y-T8	Y-FITTING-T8
12	2-00849	VTSPFI M4X12	SCREW M4X12
13	2-00308	VTCEI M6X10	HEXAGON SOCKET HEAD SCREW M6X10
14	4-137497	PROTEZIONE	COVER

GRUPPO CONSOLLE COMANDI COMMAND CONSOLE GROUP

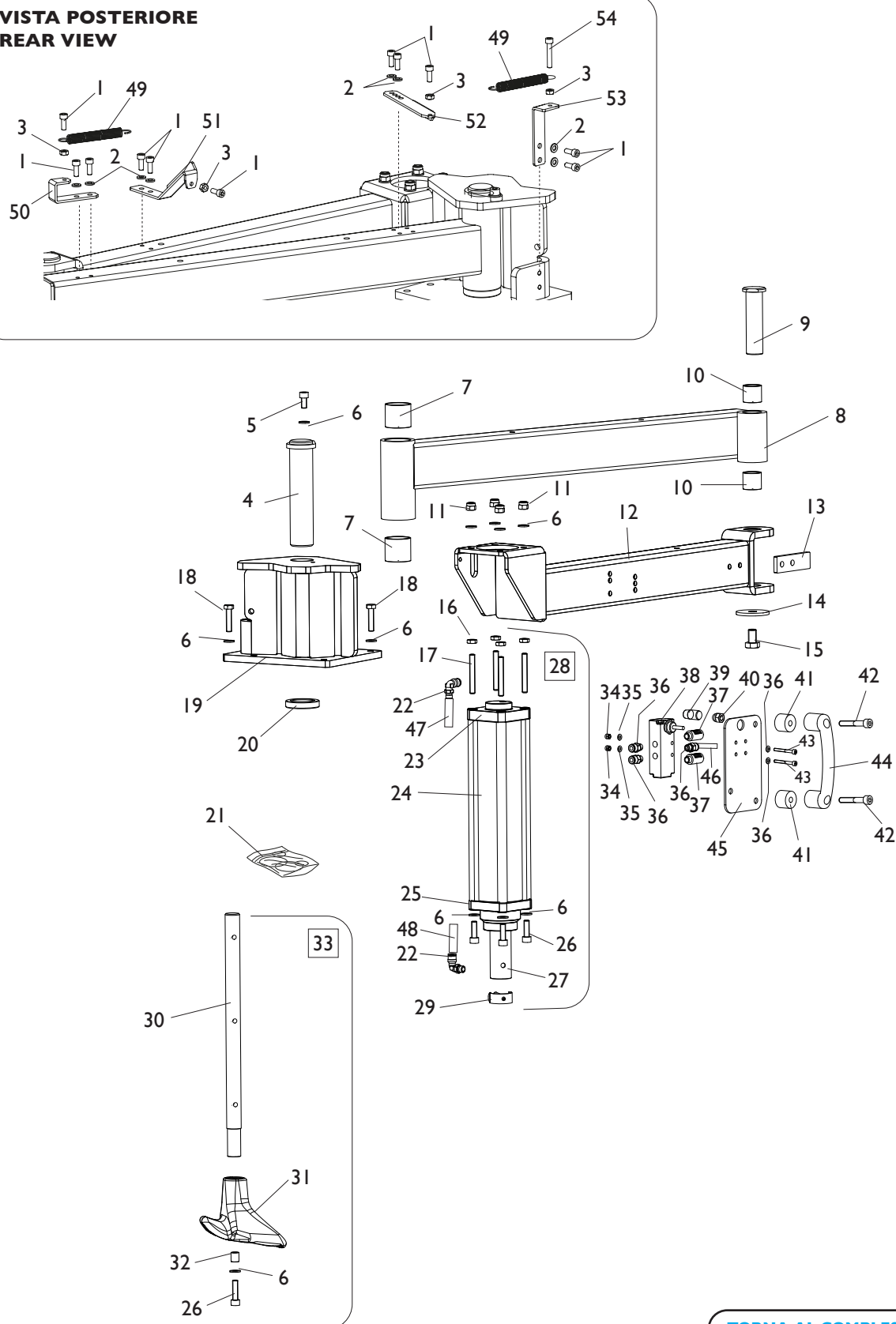


[TORNA AL COMPLESSIVO](#)
[RETURNS TO OVERALL](#)

Rif. Ref.	Codice Code	Descrizione	Description
1	4-118159	COPERCHIO CONSOLLE	CONSOLE COVER
2	2-02155	VTBEI M6X16	ROUNDED HEAD SCREW SOCKET M6X16
3	4-137621	PANNELLO CONSOLLE	CONSOLE PANEL
4	3-00049	RACCPN-LO--G1/8G-T8	FITTING 1/8
5	3-01642	VALVOLA	VALVE
6	3-00181	SILENZIATORE 1/8	SILENCER 1/8
7	3-00053	RACCPN-LO-G1/8G-T6	FITTING 1/8
8	5-102653	COMANDO STALLONATORE INFERIORE	COMMAND LOWER BEAD BREAKER ASSEMBLY
9	5-102654	COMANDO STALLONATORE SUPERIORE	COMMAND UPPER BEAD BREAKER ASSEMBLY
10	5-106127	AZIONAMENTO PENETRAZIONE	COMMAND PENETRATION
11	3-00054	RACCPN-LO-G1/8G-T4	FITTING 1/8
12	5-102719	COMANDO ROTAZIONE TESTINA	COMMAND ROTATION HEAD ASSEMBLY
13	461843	ELEMENTO DI CONTATTO	CONTACT
14	261835	COM. SMONTAGGIO/ARRETRAMENTO	COMMAND DISASSEMBLY
15	461844	MICROVALVOLA	MICROVALVE
16	261836	COMANDO RICERCA UTENSILE	COMMAND SEARCH TOOL
17	261838	MANIPOLATORE MOVIMENTO TESTINA	JOYSTICK HEAD MOVEMENT
18	5-100648	CAVO CONSOLLE	CONSOLE CABLE
19	5-100665	CAVO COLL. SK -CONSOLLE	PC BOARD CABLE - CONSOLE
20	2-02961	VTSPIC M3X20	SCREW M3X20
21	2-02060	VTSPEI M5X16	CSK SCREW FLAT SOCKET M5X16
22	2-00210	RONDELLA D.5	WASHER D.5
23	460308	DISTANZIALE D.3,7X6,4 L.9,5	SPACER D.3,7X6,4 L.9,5
24	4-104614	SK DISPLAY	DISPLAY PC BOARD
25	442153	DISTANZIALE M3	SPACER M3
26	2-01017	DADO ES.N.A. M3	NORMAL AUTOLOCKING HEXAGON NUT M3
27	2-01018	DADO ES.N.A. M4	NORMAL AUTOLOCKING HEXAGON NUT M4
28	4-118549	LAMIERA PROTEZIONE SK	PC BOARD PROTECTION
29	5-100647	CAVO DISPLAY	DISPLAY CABLE
30	5-100671	CAVO COLL. SK - DISPLAY	PC BOARD CABLE - DISPLAY
31	3-00059	RACCPN-LO-G1/8G-T8	FITTING 1/8
32	2-00209	RONDELLA D.4	WASHER D.4
33	2-00143	DADO ES.N. M4	NORMAL HEXAGON NUT M4
34	5-106119	GRUPPO DI DISTRIBUZIONE	DISTRIBUTION GROUP
35	2-00735	VTCEI 1/2F 4X30	CIRCULAR SOCKET HEAD SCREW 1/2F M4X30
36	4-105676	COLONNETTA	COLUMN
37	5-120140	LAMIERA CHIUSURA CONSOLLE	SHEET CLOSING CONSOLE
38	4-112861	SUPPORTO MISURATORE BATTISTRADA	SUPPORT TIRE TREAD MEASURER
39	2-02146	VTBEI M4X12	ROUNDED HEAD SCREW SOCKET M4X12
40	2-00297	VTCEI M5X16	HEXAGON SOCKET HEAD SCREW M5X16
41	2-00309	VTCEI M6X16	CIRCULAR SOCKET HEAD SCREW M6X16
42	4-109111	CARTER ROLL-BAR	ROLL-BAR CARTER
43	2-01979	DADO ES.A. M6	AUTOLOCKING HEXAGON NUT M6
44	5-120141	TUBO MULTIFUNZIONE	TUBE
45	5-106060	TRECCIA TUBI PNEUMATICI	BRAIDED PNEUMATIC TUBES
46	2-00692	VTSPEI M5X16	SCREW M5X16

GRUPPO PREMITALLONE BEAD DEPRESSOR GROUP

**VISTA POSTERIORE
REAR VIEW**

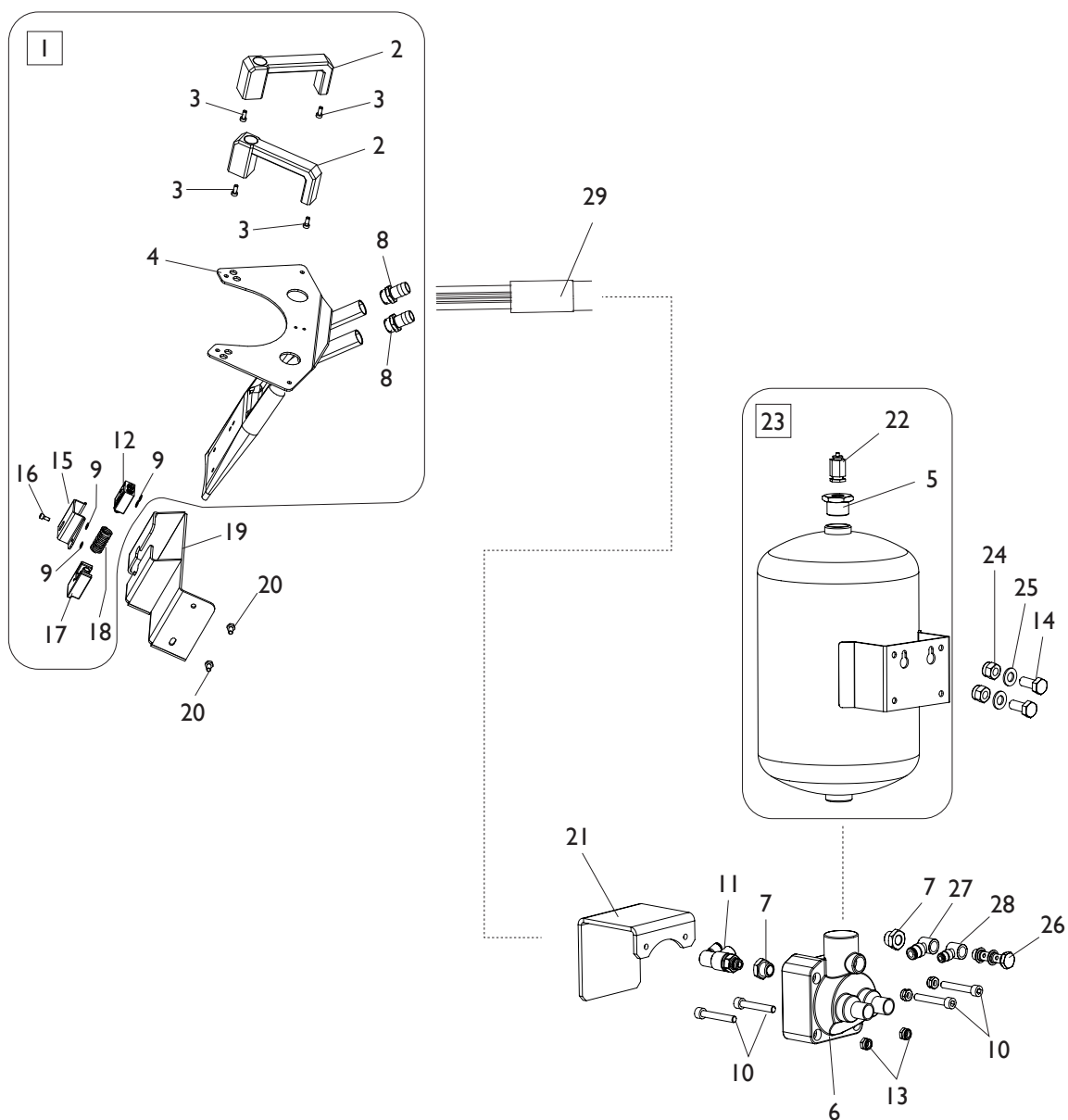


[TORNA AL COMPLESSIVO](#)
[RETURNS TO OVERALL](#)

Ref.	Code	Descrizione	Description
1	2-00309	VTCEI M6X16	HEXAGON SOCKET HEAD SCREW M6X16
2	2-00211	RONDELLA D.6	WASHER D.6
3	2-00150	DADO ES. M6	HEXAGON NUT M6
4	4-107888	PERNO FULCRO BRACCIO	PIVOT ARM
5	2-00319	VTCEI M8X16	CIRC. SOCKET HEAD SCREW M8X16
6	2-00212	RONDELLA D.8	WASHER D.8
7	3-80114	BOCCOLA D.35X35	BUSHING D.35X35
8	5-108000	BRACCIO CON BOCCOLE	ARM WITH BUSHING
9	4-106799	PERNO SNODO	PIN
10	3-80106	BOCCOLA D.25X25	BUSHING D.25X25
11	2-01020	DADO ES.N.A. M8	AUTOLOCKING HEX. NUT M8
12	4-122578	BRACCIO ROTANTE	ROTATION ARM
13	4-101897	LAMIERA ANTIROTAZIONE	ANTI-ROTATION PLATE
14	318216	RONDELLA D.12,5X50X4	WASHER D.12,5X50X4
15	2-00386	VTE M12X20	HEX. SOCKET HEAD SCREW M12X20
16	2-91680	DADO ES.B. M8	LOW HEXAGON NUT M8
17	2-02683	VSTEI M8X60	CSK SCREW FLAT SOCKET M8X60
18	2-02024	VTE M8X25	HEX. SOCKET HEAD SCREW M8X25
19	4-107868	PIASTRA ATTACCO PREMITALLONE	COUPLING PLATE MOUNTING TOOL
20	4-107890	ANELLO DISTANZIALE	SPACER
21	5-102410	KIT GUARNIZIONI CILINDRO D.63	CYLINDER SEALS KIT
22	3-00053	RACCPN-LO-G1/8G-T6	FITTING 1/8
23	4-106788	FLANGIA INFERIORE D.63	REAR FLANGE D.63
24	4-106790	CAMICIA D.63X277,5	LINER D.63X277,5
25	5-104568	FLANGIA SUPERIORE D.63	FRONT FLANGE D.63
26	2-02006	VTCEI M8X25	CIRC. SOCKET HEAD SCREW M8X25
27	5-104569	STELO CON BOCCOLE	ROD WITH BUSHING
28	5-102369	CILINDRO PREMITALLONE D.63	CYLINDER ASSEMBLY
29	5-103287	PERNO DI FERMO CON CLIP	STOP PIN
30	4-106794	STELO INTERNO REGOLABILE	INTERNAL ROD ADJUSTABLE
31	4-106888	PREMITALLONE SAGOMATO	BEAD DEPRESSOR
32	4-103846	DISTANZIALE PREMITALLONE	SPACER
33	5-102363	PREMITALLONE COMPLETO	BEAD DEPRESSOR ASSEMBLY
34	2-01018	DADO ES.N.A. M4	AUTOLOCKING HEX. NUT M4
35	2-00209	RONDELLA M4	WASHER M4
36	3-00461	RACCPN-D-G1/8G-T6	FITTING 1/8
37	3-00183	SILENZIATORE 1/8	SILENCER 1/8
38	3-01230	VALVOLA	VALVE
39	440585	IMPUGNATURA	HANDLE
40	2-00105	DADO ES.CIECO M8	NUT M8
41	461626	DISTANZIALE MANIGLIA	SPACER
42	2-80015	VTCEI M8X50	CIRC. SOCKET HEAD SCREW M8X50
43	2-02022	VTCEI M4X35	CIRC. SOCKET HEAD SCREW M4X35
44	458702	MANIGLIA APONTE D.8	HANDLE D.8
45	363396	PIATTO FISSAGGIO	PLATE
46	329874	TUBO D.6 L.3600MM	HOSE D.6 L.3600MM
47	315268	TUBO D.6 L.260MM	HOSE D.6 L.260MM
48	331060	TUBO D.6 L.500MM	HOSE D.6 L.500MM
49	4-122581	MOLLA D.12,5X1,3X63	SPRING D.12,5X1,3X63
50	4-122580	STAFFA AGGANCIO MOLLA ANT.	BRACKET
51	4-122572	STAFFA BIELLA	BRACKET
52	4-122579	STAFFA AGGANCIO MOLLA POST.	BRACKET
53	4-122576	STAFFA GANCIO MOLLA POST.	BRACKET
54	2-02218	VTCEI M6X35	HEXAGON SOCKET HEAD SCREW M6X35

GRUPPO T.I. SYSTEM

T.I. SYSTEM GROUP

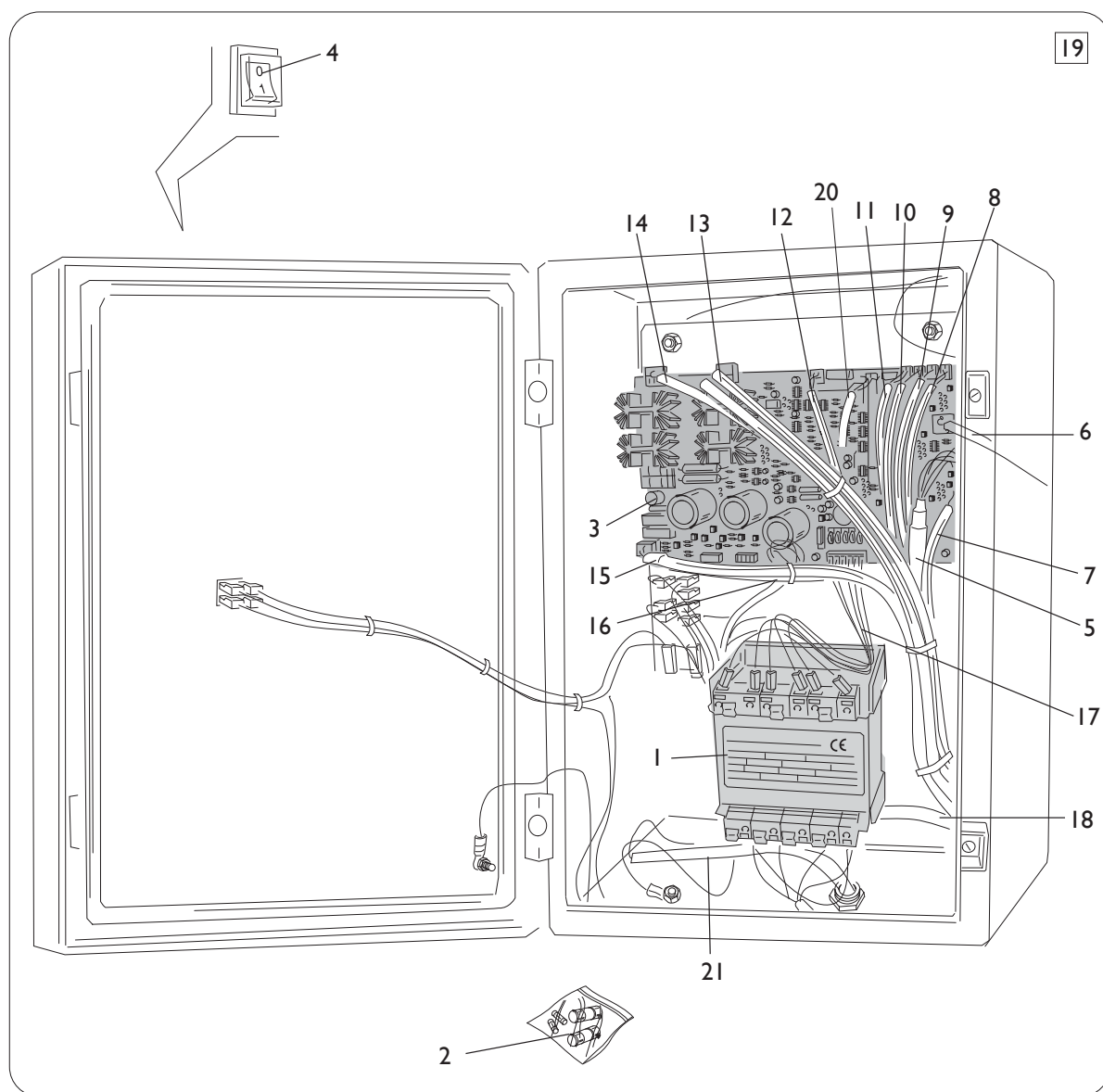


[TORNA AL COMPLESSIVO](#)
[RETURNS TO OVERALL](#)

Rif. Ref.	Codice Code	Descrizione	Description
1	5-401574	UGELLO BLAST COMPLETO	NOZZLE ASSEMBLY
2	3-90014	MICROVALVOLA A MANIGLIA	HANDEL WITH VALVE
3	2-03106	VTCEI B. M5X12	LOW HEX. SOCKET HEAD SCREW M5X12
4	4-404655	UGELLO BLAST	NOZZLE
5	442239	RIDUZIONE M/F 3/8	FITTING M/F 3/8
6	243203	VALVOLA DI SPARO	VALVE FIRING
7	3-00269	RACCPN-RIDUZIONE-G1/4-1/8F	FITTING-G1/4-1/8F
8	3-00008	RACCPN-RESCA-G1/2-T17	RESCA-FITTING-G1/2-T17
9	2-00209	RONDELLA D.4	WASHER D.4
10	2-94006	VTCEI 1/2 M6X40	CIRCULAR SOCKET HEAD SCREW M6X40
11	3-01175	VALVOLA	VALVE
12	3-90108	VALVOLA	VALVE
13	2-01979	DADO ES.A. M6	AUTOLOCKING HEX. NUT M6
14	2-02047	VTE M8X20	HEXAGON SOCKET HEAD SCREW M8X20
15	4-405537	ASTUCCIO	COVER
16	2-02080	VTCEI M4X10	HEXAGON SOCKET HEAD SCREW M4X10
17	4-405538	CURSORE	GUIDE
18	3015546	MOLLA D.17X2X36	SPRING D.17X2X36
19	4-405585	SUPPORTO BLAST	SUPPORT
20	2-91767	VTE M6X12	HEXAGON HEAD SCREW M6X12
21	3020962	STAFFA PROTEZIONE VALVOLA	VALVE BRACKET
22	3-00356	VALVOLA CE	VALVE CE
22	3-00278	VALVOLA ASME	VALVE ASME
23	262215	SERBATOIO CE	TANK CE
23	5-104289	SERBATOIO ASME	TANK ASME
24	2-01020	DADO ES.N.A. M8	NORMAL AUTOLOCKING HEXAGON NUT M8
25	2-00212	RONDELLA D.8	WASHER D.8
26	3-00075	VITE FORATA DOPPIA G1/8	SCREW TWO HOLES G1/8
27	3-00515	RACCPN-ANELLO-G1/8-T6	FITTING-G1/8-T6
28	3-00514	RACCPN-ANELLO-G1/8-T4	FITTING-G1/8-T4
29	5-491045	TUBO GONFIAGGIO COMPLETO	INFLATION HOSE ASSEMBLY

GRUPPO IMPIANTO ELETTRICO

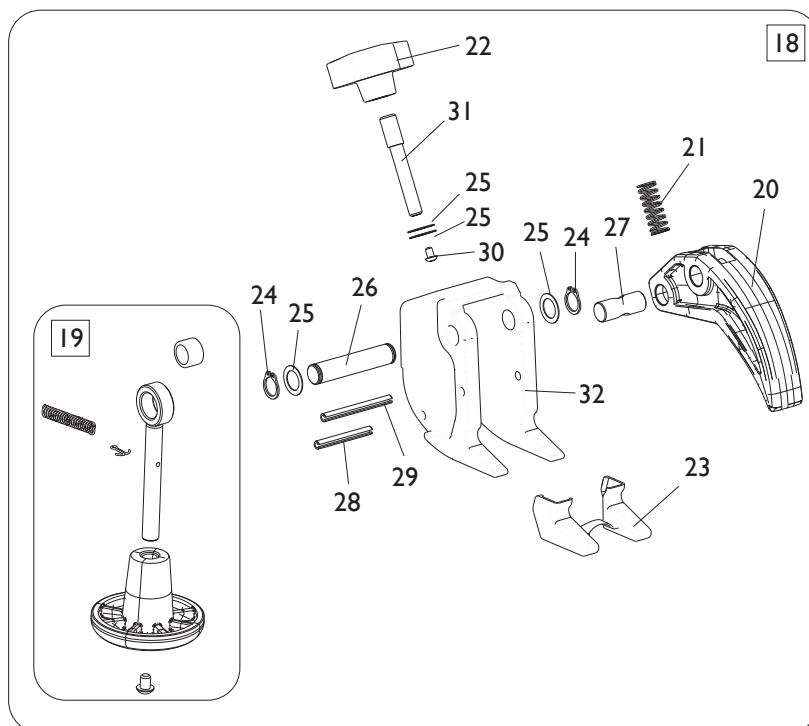
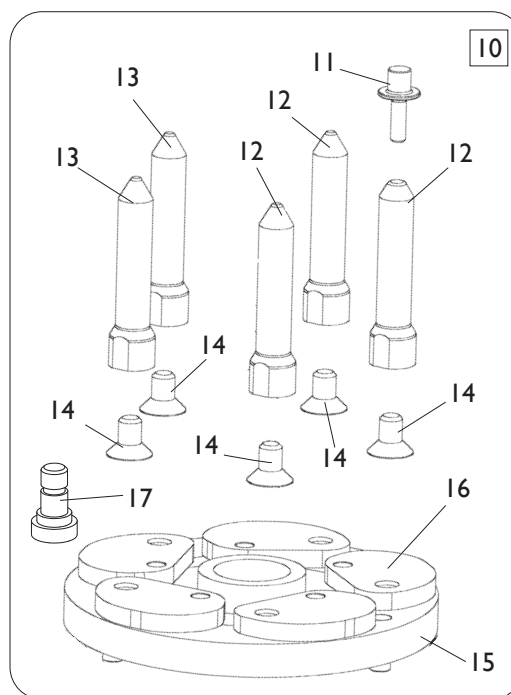
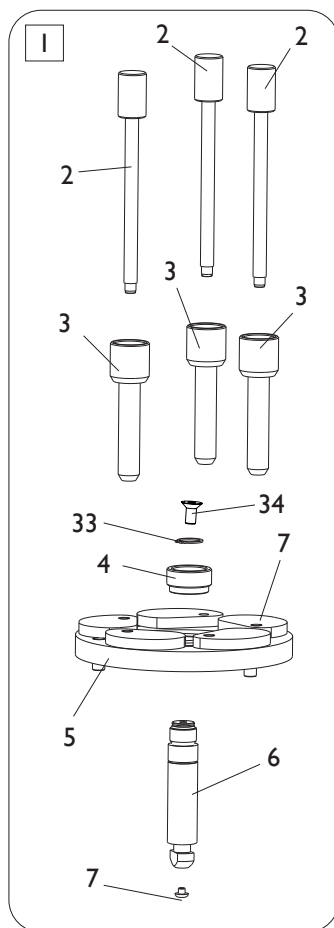
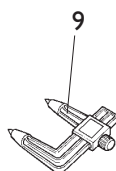
ELECTRIC PANEL GROUP



[TORNA AL COMPLESSIVO](#)
[RETURNS TO OVERALL](#)

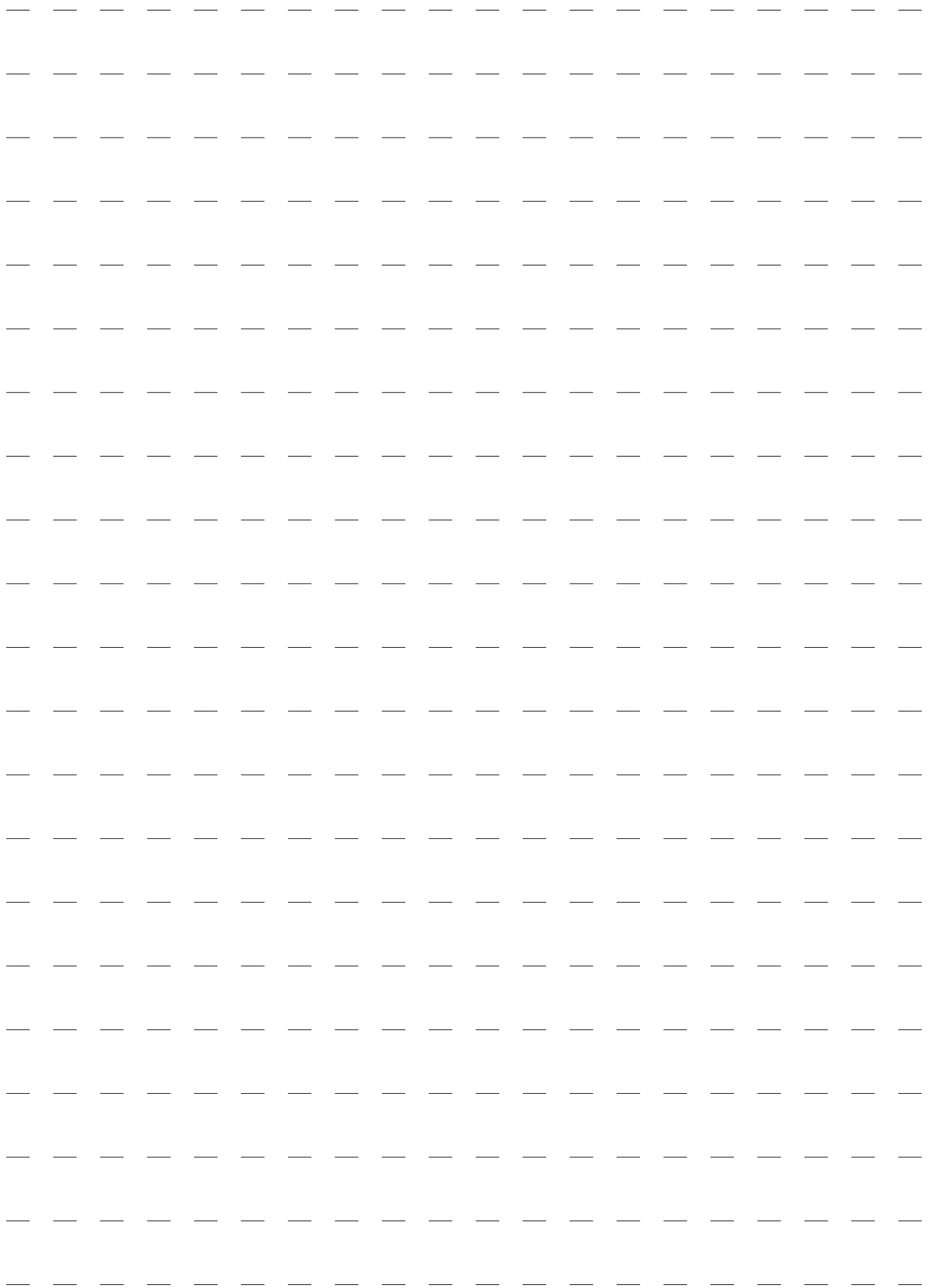
Rif. Ref.	Codice Code	Descrizione	Description
1	461829	TRASFORMATORE	TRANSFORMER
2	263565	KIT FUSIBILI	FUSES KIT
3	5-122175	SK P2K	PC BOARD P2K
4	433848	INTERRUTTORE	SWITCH
5	5-100665	CAVO COLL.SK -CONSOLLE	PC BOARD CABLE - CONSOLE
6	5-100664	CAVO COLL.SK - ENCODER ATTUATORE	PC BOARD CABLE - ACTUATOR ENCODER
7	5-100671	CAVO COLL.SK - DISPLAY	PC BOARD CABLE - DISPLAY
8	5-100666	CAVO COLL.SK - MICRO SOLLEVATORE	PC BOARD CABLE - MICRO LIFTER
9	5-100668	CAVO COLL.SK - ASSE Y DOWN	PC BOARD CABLE - Y AXIS DOWN
10	5-100667	CAVO COLL.SK - ASSE Y UP	PC BOARD CABLE - Y AXIS UP
11	5-100669	CAVO COLL.SK - MICRO AZZERAMENTO	PC BOARD CABLE - MICRO RESET
12	5-100722	CAVO ROTAZIONE AUTOCENTRANTE	CABLE TURNTABLE ROTATION
13	5-100663	CAVO COLL.SK - MOTORE ASSE Y	PC BOARD CABLE - ASSE Y MOTOR
14	5-100662	CAVO COLL.SK - ATTUATORE ASSE X	PC BOARD CABLE - X AXIS ACTUATOR
15	5-100689	CAVO COLL.SK - BRAKEY	PC BOARD CABLE - BRAKEY
16	5-100660	CAVO COLL.SK - EV1/EV2	PC BOARD CABLE - EV1/EV2
17	5-101471	CAVO SECONDARIO TRASFORMATORE	TRANSFORMER CABLE
18	5-105010	CAVO ALIM.MOTOINV - SK	MOTOINVERTER POWER CABLE - PC BOARD
19	5-100726	IMPIANTO ELETTRICO COMPLETO	ELECTRIC PANEL ASSEMBLY
20	4-135541	CAVO MICRO L. 4mt	MICRO CABLE L. 4mt
21	5-100654	CAVO RETE	POWER CABLE

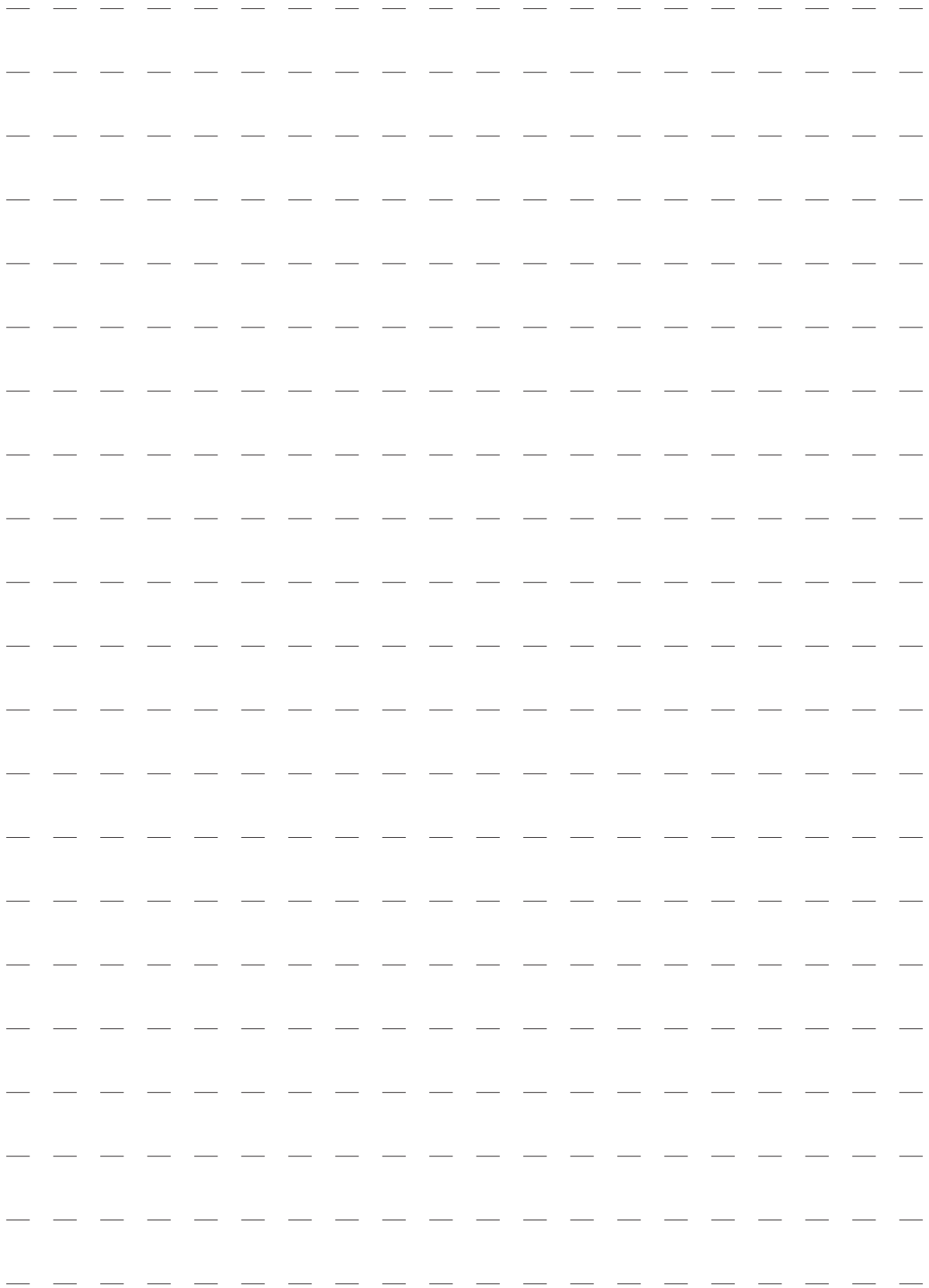
ACCESSORI ACCESSORIES



TORNA AL COMPLESSIVO
RETURNS TO OVERALL

Rif. Ref.	Codice Code	Descrizione	Description
1	8-11100087	KIT RUOTE CIECHE	WHEEL KIT BLIND
1	8-11100038	KIT RUOTE CIECHE (VERS.AUTOMATICA)	WHEEL KIT BLIND (AUTOMATIC VERSION)
2	361647	VITE FISSAGGIO CERCHI CIECHI	FIXING BOLT RIMS BLIND
3	361648	GHIERA FISSAGGIO CERCHI CIECHI	FITTING NUT RIMS BLIND
4	4-103766	GHIERA SERRAGGIO FLANGIA	FITTING NUT
5	5-102422	FLANGIA UNIVERSALE 6 PETALI	UNIVERSAL FLANGE 6 PETALS
6	4-103765	BARRA BLOCCAGGIO FLANGE	BAR
6	4-102372	BARRA BLOCC. FLANGE (VERS.AUTOMATICA)	BAR (AUTOMATIC VERSION)
7	461560	PROTEZIONE	PROTECTION
8	4-107023	BIELLA	PETAL
9	2008157	RILEVATORE FORI	DETECTOR HOLES
10	8-11100039	KIT RUOTE ROVESCE	REVERSE RIMS KIT
11	4-102377	GHIERA DI SERRAGGIO	FITTING NUT
12	5-102721	COLONNETTA CON SERRAGGIO	COLUMN WITH LOCKING
13	5-102720	COLONNETTA	COLUMN
14	2-71769	VTSPEI M12X20	CSK SCREW FLAT SOCKET M12X20
15	5-102421	FLANGIA CERCHI ROVESCII	FLANGE REVERSE RIMS
16	4-107024	BIELLA	PETAL
17	4-101250	VITE FISSAGGIO BIELLA	SPECIAL SCREW
18	8-11100120	MORSETTO BASCULANTE	TILTING CLAMP
19	5-101642	DISCO DI SPINTA	DISK
20	4-104051	DITO	TOOL
21	3-01760	MOLLA D.11,5X30X1,5	SPRING D.11,5X30X1,5
22	3-01715	VOLANTINO	HANDLE
23	8-11100126	KIT 6 PROTEZIONI	6 PROTECTION KIT
24	2-00025	ANELLO D.12	SEEGER D.12
25	315274	RONDELLA D.12X18X0,5	WASHER D.12X18X0,5
26	4-104271	PERNO	PIN
27	4-104258	PERNO FORATO PICCOLO	SMALL PIN HOLES
28	2-71566	SPINA D.5X40	PLUG D.5X40
29	2-02219	SPINA D.5X50	PLUG D.5X50
30	2-03039	VTBEI M4X6	ROUNDED HEAD SCREW SOCKET M4X6
31	4-104259	PERNO DUE FILETTI	PIN TWO THREADS
32	4-104235	CORPO MORSETTO	BODY
33	361662	RONDELLA SVASATA	WASHER
34	2-03074	VTSPEI M12X25	SCREW M12X25





Code 4-I37579

Production date : 06 / 2021

Il disegno è realizzato con tutti i particolari ma solo quelli codificati sono forniti come ricambi. L'Azienda si riserva la facoltà di apportare modifiche senza preavviso.

The drawing shows all parts but only the coded parts are supplied as spares. The Company reserves the right to make modifications without prior notice.