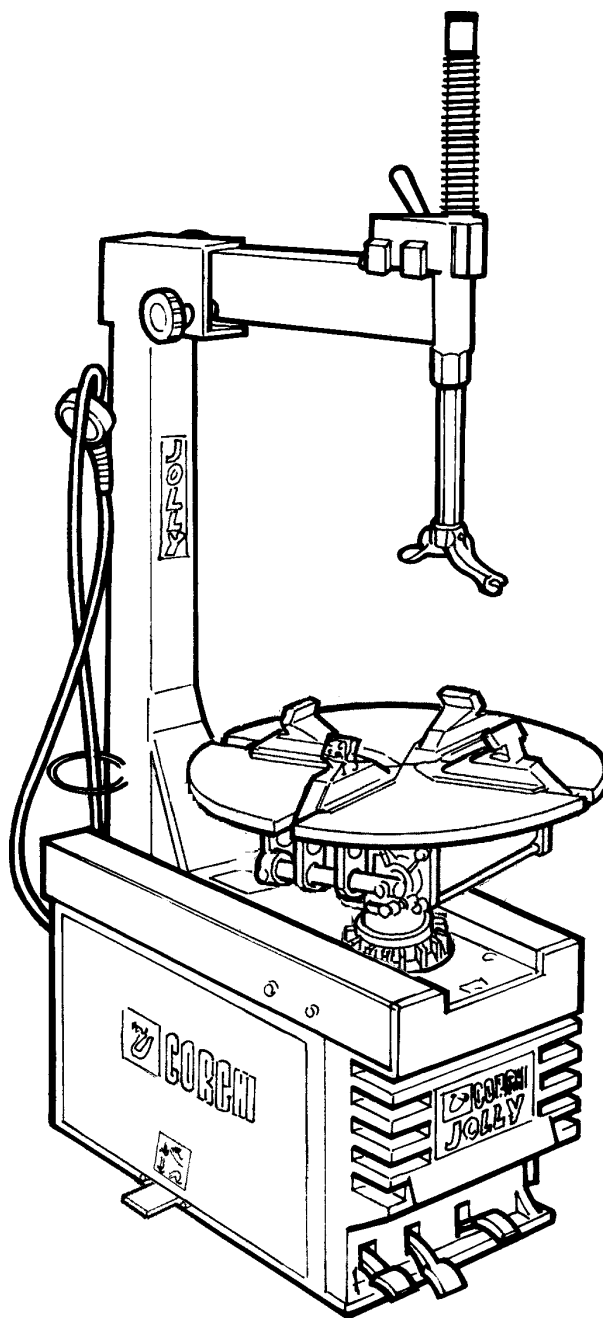


Questo libretto non autorizza l'utente ad intervenire sulle macchine ad esclusione di quanto esplicitamente descritto nel Manuale d'uso, ma consente all'utente di fornire informazioni precise all'Assistenza tecnica, al fine di ridurre i tempi di intervento.

# JOLLY

The "Spare parts" booklet does not authorize the user to carry out work on the machine unless expressly specified in the instruction manual, but does enable him to provide accurate information to the assistance service in order to reduce downtime.

## PEZZI DI RICAMBIO SPARE PARTS LIST ERSATZTEILLISTE PIECES DE RECHANGE



In produzione da  
Production from  
Herstellung ab  
Production

05 / 00

Versione

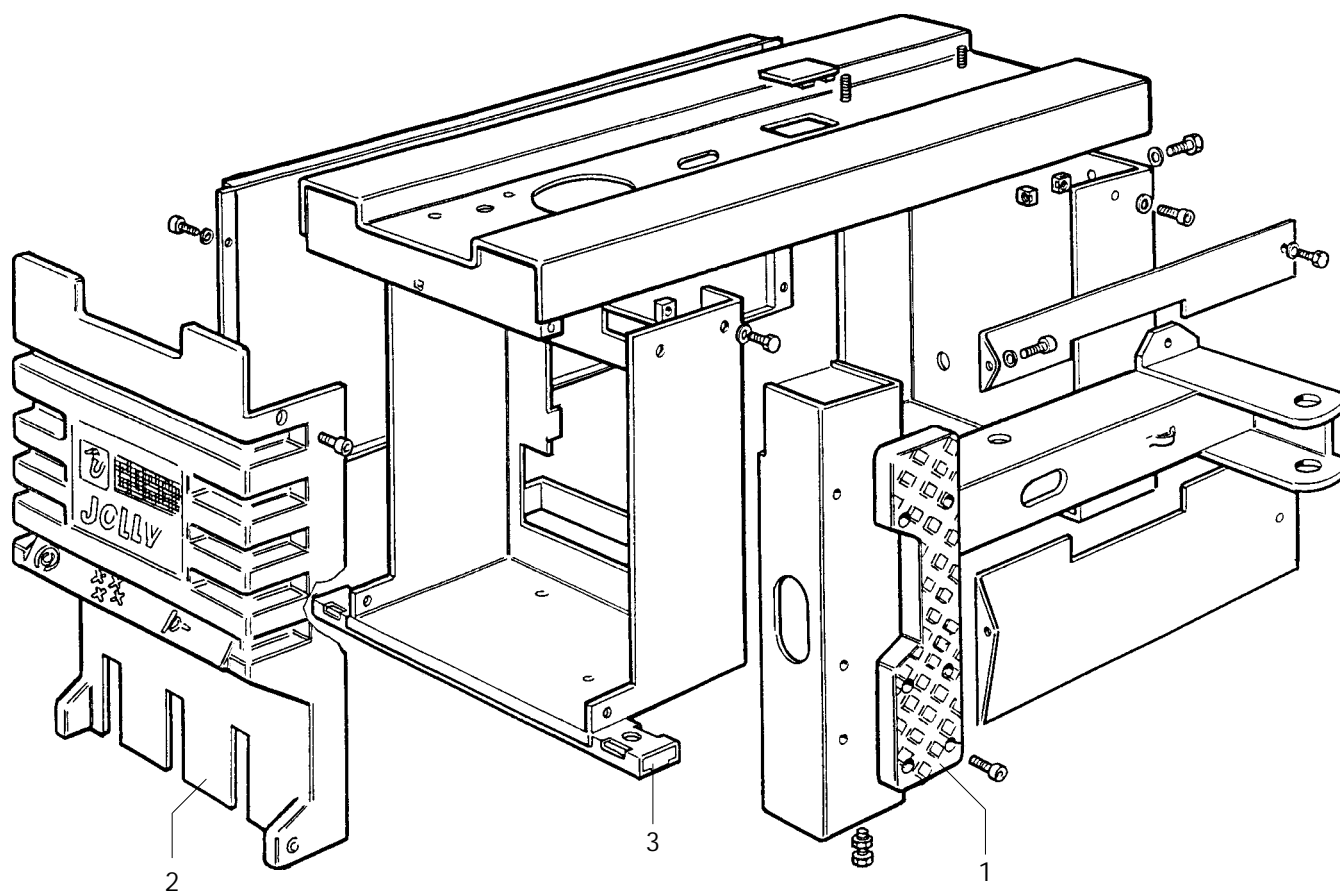
4.0

Der Katalog Ersatzteile stellt keine Genehmigung zu eigenmächtigen Eingriffen dar (mit Ausnahme jener im Handbuch beschriebenen), sondern er soll den Anwender in die Lage versetzen, dem technischen Service präzise Informationen zu liefern, um die Reparaturzeiten zu verkürzen.



# CORCHI

Le livret "Pièces de rechange", n'autorise pas l'utilisateur à intervenir sur les machines, sauf pour tout ce qui est clairement décrit dans le manuel d'utilisation, mais lui permet de fournir des informations précises à l'assistance technique, afin de diminuer les délais d'intervention.

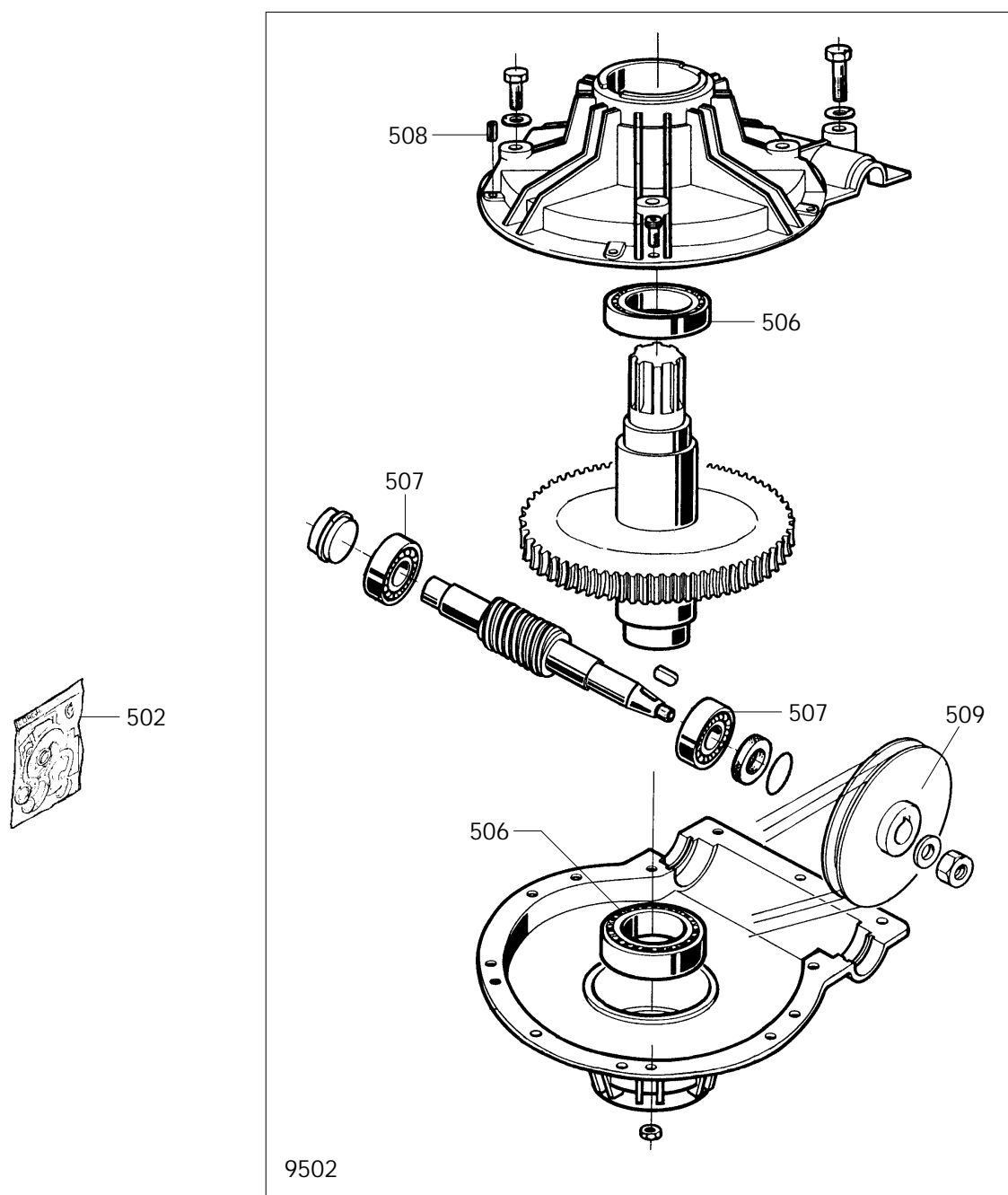


|      |           |          |
|------|-----------|----------|
| 0001 | 900436199 | APPOGGIO |
| 0002 | 900439201 | COFANO   |
| 0003 | 900422019 | PIEDE    |

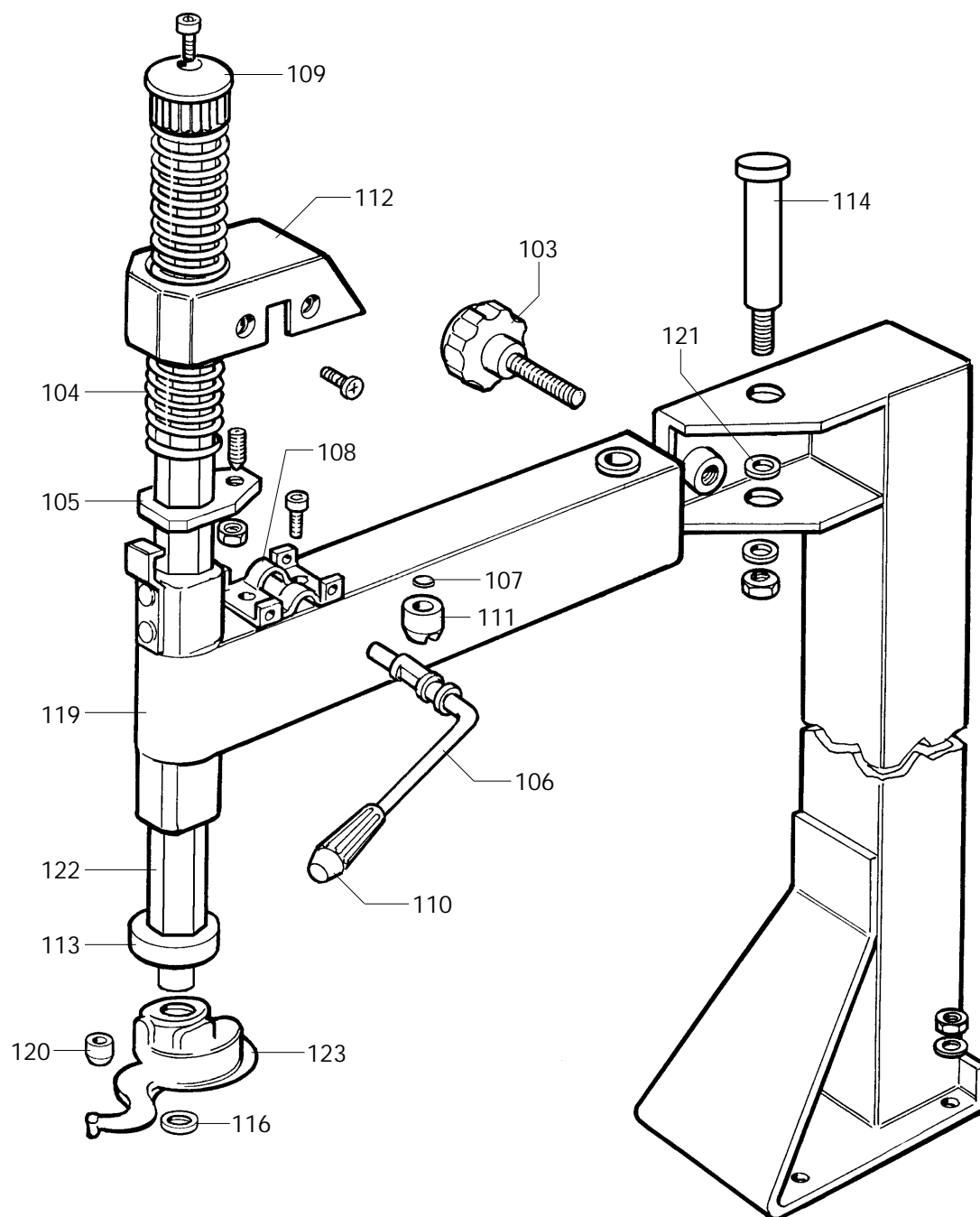
|             |
|-------------|
| RIM SUPPORT |
| HOOD        |
| FOOT        |


|         |
|---------|
| STUETZE |
| HAUBE   |
| FUSS    |

|        |
|--------|
| APPUI  |
| COFFRE |
| PIED   |

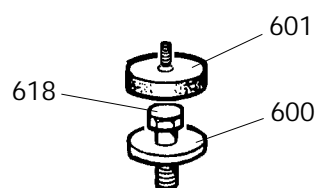


|      |           |                    |                 |                      |                    |
|------|-----------|--------------------|-----------------|----------------------|--------------------|
| 0502 | 900238204 | KIT GUARNIZIONI    | SEALS KIT       | DICHTUNGSATZ         | KIT JOINTS         |
| 9502 | 900243102 | RIDUTTORE          | GEAR BOX        | GETRIEBE             | REDUCTEUR          |
| 9502 | 900245977 | RIDUTTORE (pneum.) | GEAR BOX(pn.)   | GETRIEBE (pneum.)    | REDUCTEUR (pneum.) |
| 0506 | 900601220 | CUSCINETTO         | BEARING         | LAGER                | ROULEMENT          |
| 0507 | 900601221 | CUSCINETTO         | BEARING         | LAGER                | ROULEMENT          |
| 0508 | 900601280 | SPINA ELASTICA     | PIN             | SPANNSTIFT           | CHEVILLE           |
| 0509 | 900414344 | PULEGGIA           | PULLEY          | RIEMENSCHLEIBE       | POULIE             |
| 0509 | 900319073 | PULEGGIA (pneum.)  | PULLEY (pneum.) | RIEMENSCHLEIBE (pn.) | POULIE (pneum.)    |

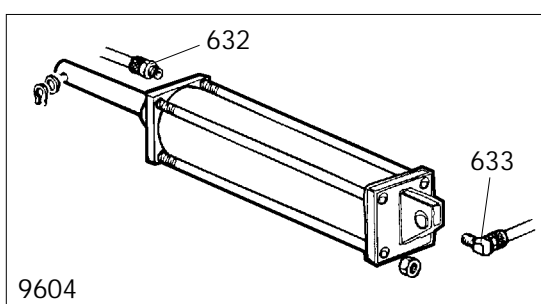
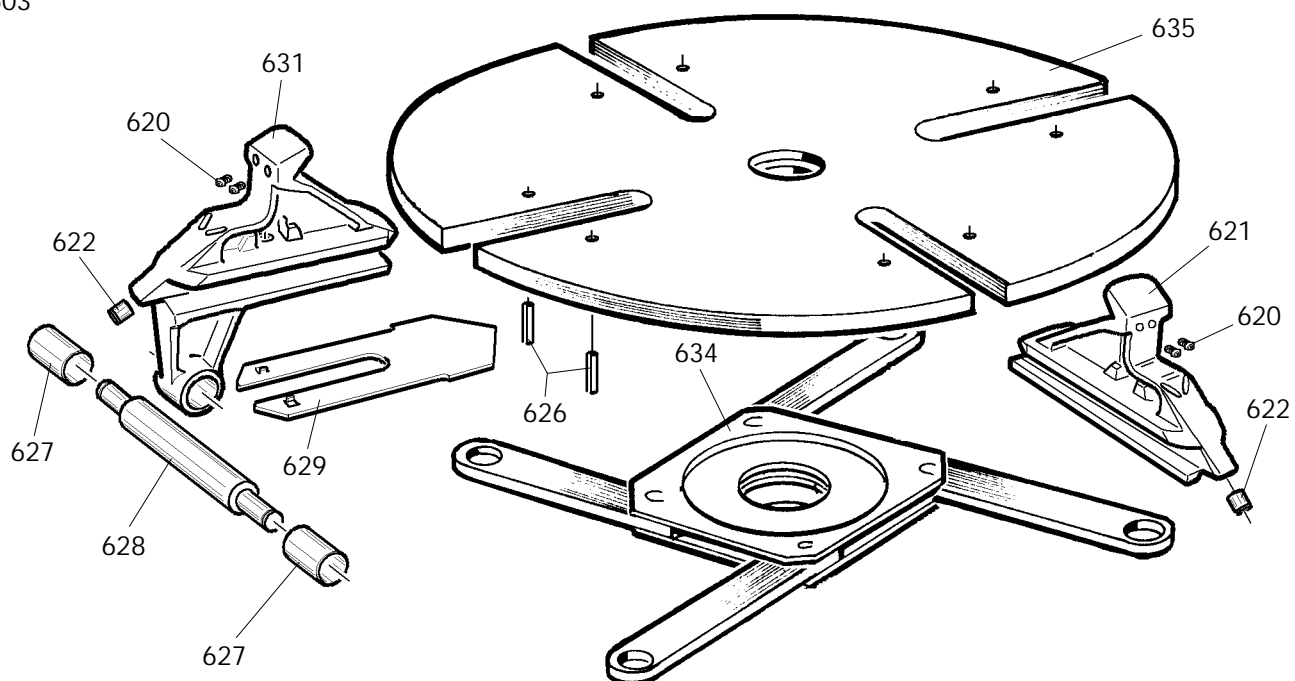


|  |       |        |        |                  |
|--|-------|--------|--------|------------------|
|  | JOLLY | Fig. C | 05/ 00 | Braccio operante |
|--|-------|--------|--------|------------------|

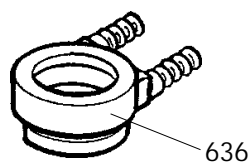
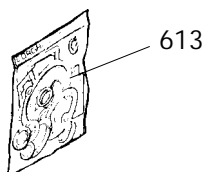
|      |           |           |        |                 |           |
|------|-----------|-----------|--------|-----------------|-----------|
| 0103 | 900440276 | MANOPOLA  | KNOB   | BALLENGRIFF     | BOUTON    |
| 0104 | 900423765 | MOLLA     | SPRING | FEDER           | RESSORT   |
| 0105 | 900440278 | PIATTO    | PLATE  | TELLER          | PLAT      |
| 0106 | 900440279 | LEVA      | LEVER  | HEBEL           | LEVIER    |
| 0107 | 900440280 | PIASTRINA | PLATE  | PLAETTCHEN      | PLAQUETTE |
| 0108 | 900440281 | PIASTRINA | PLATE  | PLAETTCHEN      | PLAQUETTE |
| 0109 | 900423907 | POMOLO    | KNOB   | BALLENGRIFF     | POMMEAU   |
| 0110 | 900417351 | MANOPOLA  | KNOB   | BALLENGRIFF     | BOUTON    |
| 0111 | 900440284 | NOTTOLINO | PAWL   | KLINKE          | CLIQUET   |
| 0112 | 900440285 | CARTER    | CASING | GEHAUSE         | CARTER    |
| 0113 | 900428681 | ANELLO    | RING   | RING            | ANNEAU    |
| 0114 | 900440287 | PERNO     | PIN    | ZAPFEN          | PIVOT     |
| 0116 | 900424275 | RONDELLA  | WASHER | UNTERLEGSCHEIBE | RONDELLE  |
| 0119 | 900240275 | BRACCIO   | ARM    | ARM             | BRAS      |
| 0120 | 900322738 | RULLO     | ROLLER | WALZE           | ROULEAU   |
| 0121 | 900440439 | RONDELLA  | WASHER | UNTERLEGSCHEIBE | RONDELLE  |
| 0122 | 900343105 | BRACCIO   | ARM    | ARM             | BRAS      |
| 0123 | 900258458 | TORRETTA  | HEAD   | DREHKOPF        | TOURELLE  |




9603



9604



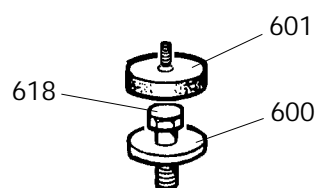
|  |       |        |         |                   |
|--|-------|--------|---------|-------------------|
|  | JOLLY | Fig. D | 03 / 98 | Autocentrante 18" |
|--|-------|--------|---------|-------------------|

|      |           |                 |           |                 |            |
|------|-----------|-----------------|-----------|-----------------|------------|
| 0600 | 900323363 | RONDELLA        | WASHER    | UNTERLEGSCHIEBE | RONDELLE   |
| 0601 | 900426514 | TAPPO           | PLUG      | STOPFEN         | BOUCHON    |
| 0613 | 900238548 | KIT GUARNIZIONI | SEALS KIT | DICHTUNGSATZ    | KIT JOINTS |
| 0618 | 900601216 | VITE            | SCREW     | SCHRAUBE        | VIS        |

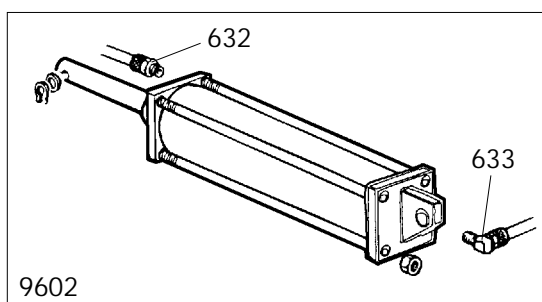
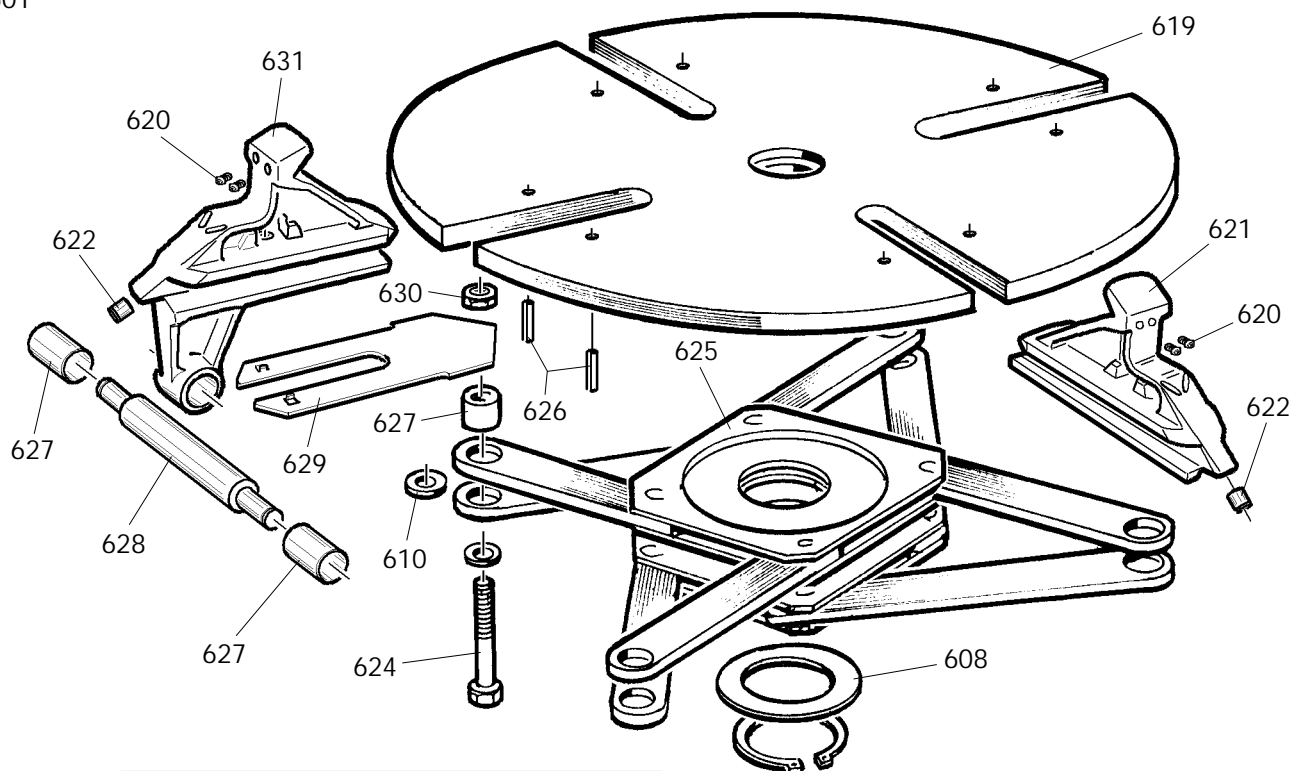
|      |           |                    |                  |                    |                     |
|------|-----------|--------------------|------------------|--------------------|---------------------|
| 9603 | 900255068 | AUTOCENTRANTE T.I. | TURNTABLE T.I.   | SPANNFUTTER T.I.   | PLATEAU AUTOC. T.I. |
| 9603 | 900254745 | AUTOCENTRANTE      | TURNTABLE        | SPANNFUTTER        | PLATEAU AUTOC.      |
| 0620 | 900339146 | PUNTE DI BLOCC.    | LOCKING PEAK     | FESTKLEMMENSPIITZE | POINTE DE BLOCAGE   |
| 0621 | 900253815 | APPOGGIO           | RIM SUPPORT      | STUETZE            | APPUI               |
| 0621 | 900253813 | APPOGGIO T.I.      | RIM SUPPORT T.I. | STUETZE T.I.       | APPUI T.I.          |
| 0622 | 900441100 | RACCORDO           | CONNECTOR        | ANSCHLUSS          | RACCORD             |
| 0626 | 900601059 | SPINA              | PLUG             | STECKER            | FICHE               |
| 0628 | 900353804 | PERNO              | PIN              | ZAPFEN             | PIVOT               |
| 0629 | 900354638 | COPRIASOLA         | COVER            | LOCHSTOPFEN        | BOUCHON             |
| 0631 | 900253812 | APPOGGIO T.I.      | RIM SUPPORT T.I. | STUETZE T.I.       | APPUI T.I.          |
| 0631 | 900253814 | APPOGGIO           | RIM SUPPORT      | STUETZE            | APPUI               |
| 0634 | 900239167 | FLANGIA            | FLANGE           | FLANSCH            | FLASQUE             |
| 0635 | 900254650 | PIATTO             | PLATE            | TELLER             | PLAT                |

|      |           |                   |                |           |          |
|------|-----------|-------------------|----------------|-----------|----------|
| 9604 | 900254653 | CILINDRO DESTRO   | CYLINDER RIGHT | ZYLINDER  | CYLINDRE |
| 9604 | 900254652 | CILINDRO SINISTRO | CYLINDER LEFT  | ZYLINDER  | CYLINDRE |
| 0632 | 900441568 | RACCORDO          | CONNECTOR      | ANSCHLUSS | RACCORD  |
| 0633 | 900443367 | RACCORDO          | CONNECTOR      | ANSCHLUSS | RACCORD  |

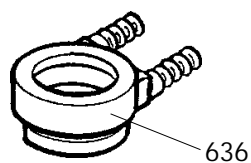
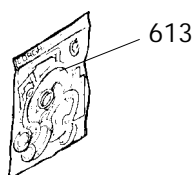
|      |           |               |                |                |              |
|------|-----------|---------------|----------------|----------------|--------------|
| 0636 | 900241841 | RACCORDO T.I. | T.I. CONNECTOR | T.I. ANSCHLUSS | RACCORD T.I. |
| 0636 | 900228389 | RACCORDO      | CONNECTOR      | ANSCHLUSS      | RACCORD      |




9601



9602



|  |       |        |         |                   |
|--|-------|--------|---------|-------------------|
|  | JOLLY | Fig. D | 10 / 98 | Autocentrante 20" |
|--|-------|--------|---------|-------------------|

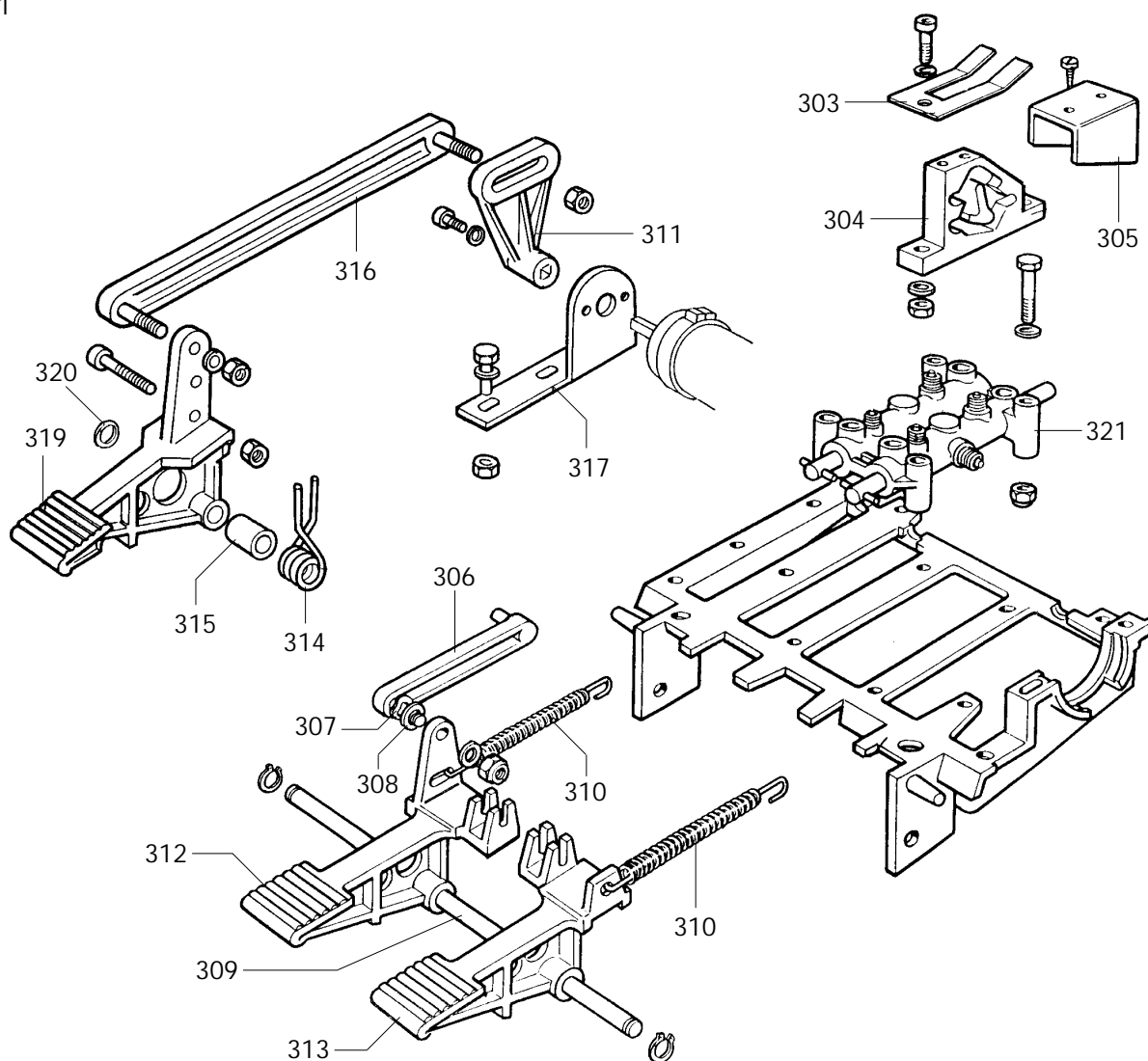
|      |           |                 |           |                 |            |
|------|-----------|-----------------|-----------|-----------------|------------|
| 0600 | 900323363 | RONDELLA        | WASHER    | UNTERLEGSCHIEBE | RONDELLE   |
| 0601 | 900426514 | TAPPO           | PLUG      | STOPFEN         | BOUCHON    |
| 0613 | 900238548 | KIT GUARNIZIONI | SEALS KIT | DICHTUNGSATZ    | KIT JOINTS |
| 0618 | 900601216 | VITE            | SCREW     | SCHRAUBE        | VIS        |

|      |           |                    |                  |                    |                     |
|------|-----------|--------------------|------------------|--------------------|---------------------|
| 9601 | 900253801 | AUTOCENTRANTE T.I. | TURNTABLE T.I.   | SPANNFUTTER T.I.   | PLATEAU AUTOC. T.I. |
| 9601 | 900253802 | AUTOCENTRANTE      | TURNTABLE        | SPANNFUTTER        | PLATEAU AUTOC.      |
| 0608 | 900455082 | RONDELLA           | WASHER           | UNTERLEGSCHIEBE    | RONDELLE            |
| 0610 | 900437964 | RONDELLA           | WASHER           | UNTERLEGSCHIEBE    | RONDELLE            |
| 0619 | 900253758 | PIATTO             | PLATE            | TELLER             | PLAT                |
| 0620 | 900339146 | PUNTE DI BLOCC.    | LOCKING PEAK     | FESTKLEMMENSPIITZE | POINTE DE BLOCAGE   |
| 0621 | 900253815 | APPOGGIO           | RIM SUPPORT      | STUETZE            | APPUI               |
| 0621 | 900253813 | APPOGGIO T.I.      | RIM SUPPORT T.I. | STUETZE T.I.       | APPUI T.I.          |
| 0622 | 900441100 | RACCORDO           | CONNECTOR        | ANSCHLUSS          | RACCORD             |
| 0624 | 900602199 | VITE               | SCREW            | SCHRAUBE           | VIS                 |
| 0625 | 900253776 | FLANGIA            | FLANGE           | FLANSCH            | FLASQUE             |
| 0626 | 900601059 | SPINA              | PLUG             | STECKER            | FICHE               |
| 0627 | 900353803 | BOCCOLA            | BUSHING          | LAGER              | DOUILLE             |
| 0628 | 900353804 | PERNO              | PIN              | ZAPFEN             | PIVOT               |
| 0629 | 900354638 | COPRIASOLA         | COVER            | LOCHSTOPFEN        | BOUCHON             |
| 0630 | 900601276 | DADO               | NUT              | MUTTER             | ECROU               |
| 0631 | 900253812 | APPOGGIO T.I.      | RIM SUPPORT T.I. | STUETZE T.I.       | APPUI T.I.          |
| 0631 | 900253814 | APPOGGIO           | RIM SUPPORT      | STUETZE            | APPUI               |

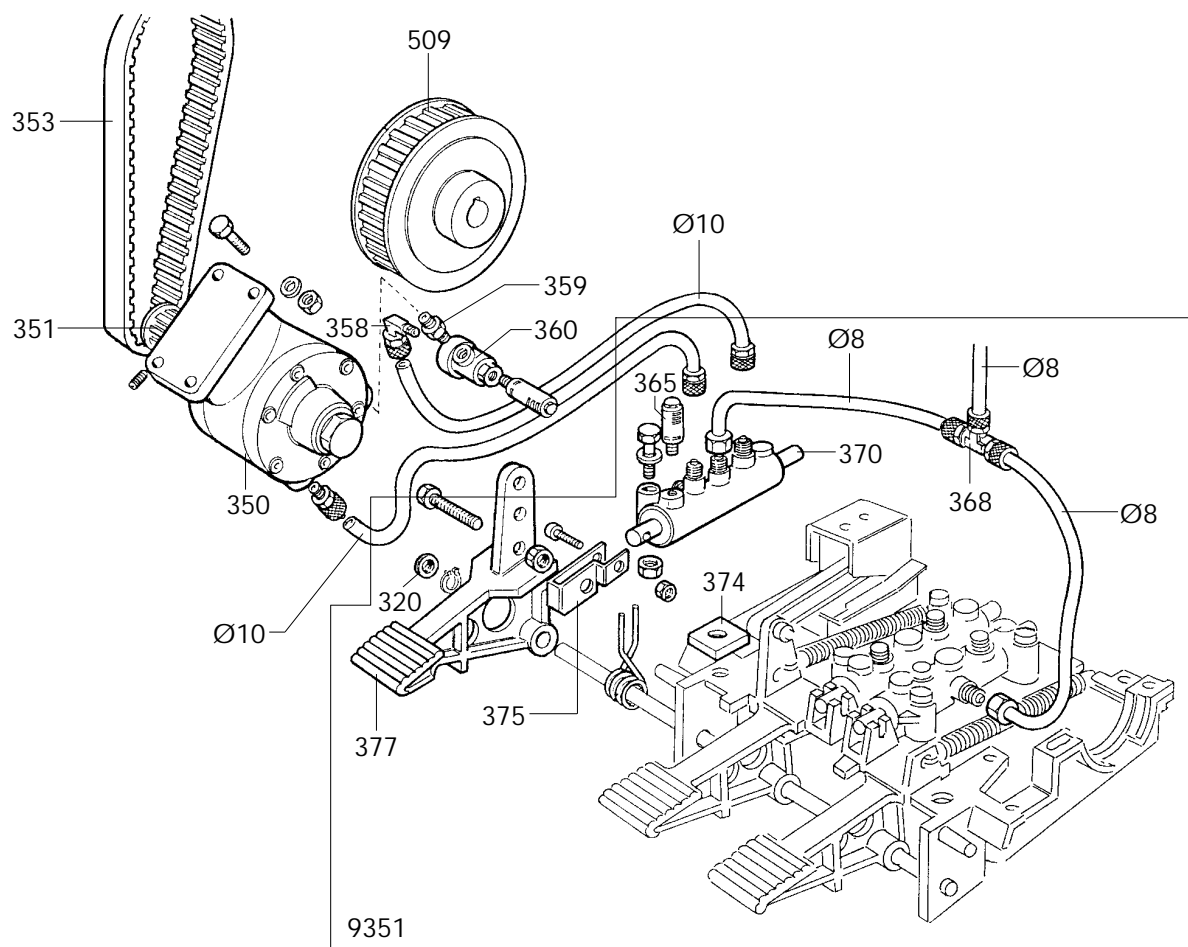
|      |           |                   |                |           |          |
|------|-----------|-------------------|----------------|-----------|----------|
| 9602 | 900253784 | CILINDRO DESTRO   | CYLINDER RIGHT | ZYLINDER  | CYLINDRE |
| 9602 | 900253783 | CILINDRO SINISTRO | CYLINDER LEFT  | ZYLINDER  | CYLINDRE |
| 0632 | 900441568 | RACCORDO          | CONNECTOR      | ANSCHLUSS | RACCORD  |
| 0633 | 900443367 | RACCORDO          | CONNECTOR      | ANSCHLUSS | RACCORD  |

|      |           |               |                |                |              |
|------|-----------|---------------|----------------|----------------|--------------|
| 0636 | 900241841 | RACCORDO T.I. | T.I. CONNECTOR | T.I. ANSCHLUSS | RACCORD T.I. |
| 0636 | 900228389 | RACCORDO      | CONNECTOR      | ANSCHLUSS      | RACCORD      |

9301



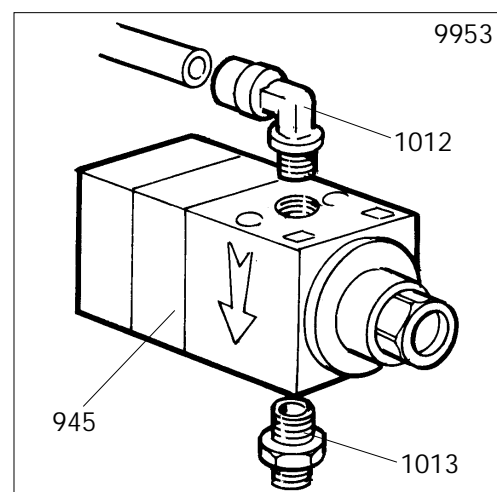
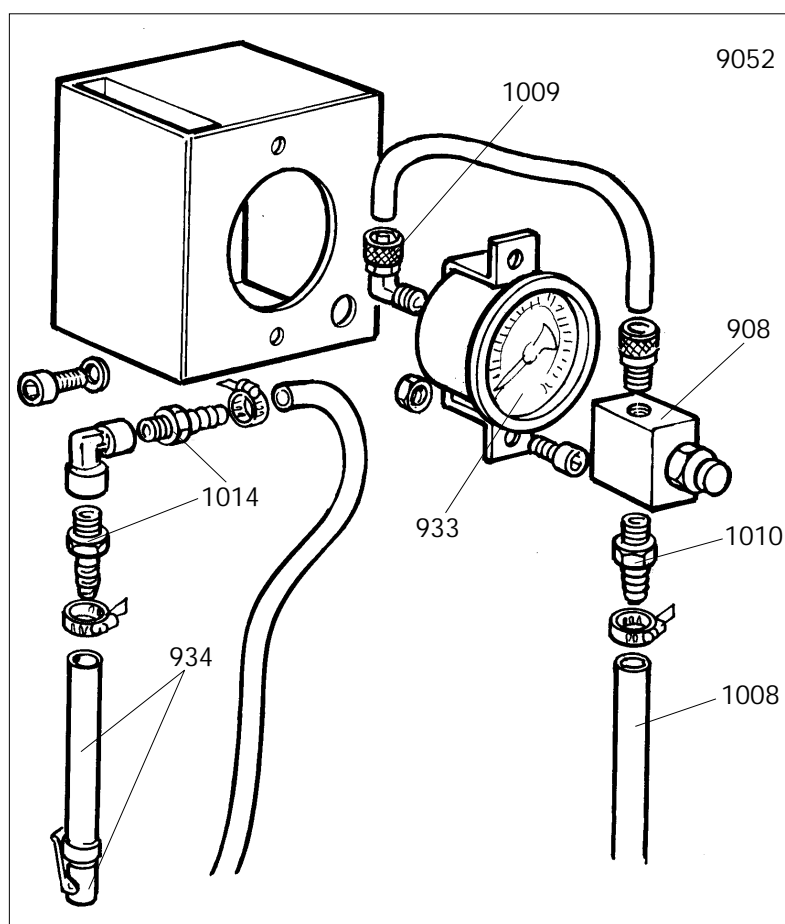
| 9301 | 900241201 | PEDALIERA   | CONTROL PEDAL | PEDALERIE       | GR.PEDALES      |
|------|-----------|-------------|---------------|-----------------|-----------------|
| 0303 | 900325019 | BALESTRA    | LEAF SPRING   | BLATTFEDER      | RESSORT A LAMES |
| 0304 | 900425020 | CAMMA       | CAM           | NOCKEN          | CAME            |
| 0305 | 900325018 | CAVALLOTTO  | U-BOLT        | BUEGELBOLZEN    | CRAMPILLON      |
| 0306 | 900425014 | BIELLA      | TRACE         | PLEUELSTANGE    | BIELLE          |
| 0307 | 900419888 | RONDELLA    | WASHER        | UNTERLEGSCHIEBE | RONDELLE        |
| 0308 | 900309358 | RONDELLA    | WASHER        | UNTERLEGSCHIEBE | RONDELLE        |
| 0309 | 900325583 | PERNO       | PIN           | ZAPFEN          | PIVOT           |
| 0310 | 900410628 | MOLLA       | SPRING        | FEDER           | RESSORT         |
| 0311 | 900404283 | LEVA        | LEVER         | HEBEL           | LEVIER          |
| 0312 | 900325031 | PEDALE      | PEDAL         | PEDAL           | PEDALE          |
| 0313 | 900325032 | PEDALE      | PEDAL         | PEDAL           | PEDALE          |
| 0314 | 900428682 | MOLLA       | SPRING        | FEDER           | RESSORT         |
| 0315 | 900325050 | DISTANZIALE | SPACER        | ABSTANDSSTUECK  | ENTRETOISE      |
| 0316 | 900429009 | BIELLA      | TRACE         | PLEUELSTANGE    | BIELLE          |
| 0317 | 900334758 | SUPPORTO    | SUPPORT       | LAGER           | SUPPORT         |
| 0319 | 900325029 | PEDALE      | PEDAL         | PEDAL           | PEDALE          |
| 0320 | 900452011 | BOCCOLA     | BUSHING       | LAGER           | DOUILLE         |
| 0321 | 900253298 | RUBINETTO   | COCK          | HAHN            | ROBINET         |



|      |           |          |            |               |          |
|------|-----------|----------|------------|---------------|----------|
| Ø8   | 900701683 | TUBO     | PIPE       | ROHR          | TUYAU    |
| Ø10  | 900701875 | TUBO     | PIPE       | ROHR          | TUYAU    |
| 0350 | 900319135 | MOTORE   | MOTOR      | MOTOR         | MOTEUR   |
| 0351 | 900319076 | PULEGGIA | PULLEY     | RIEMENSCHIEBE | POULIE   |
| 0353 | 900425238 | CINGHIA  | BELT       | RIEMEN        | COURROIE |
| 0358 | 900418350 | RACCORDO | CONNECTOR  | ANSCHLUSS     | RACCORD  |
| 0359 | 900419142 | NIPPLO   | CONNECTION | NIPPEL        | NIPPLE   |
| 0360 | 900419141 | VALVOLA  | VALVE      | VENTIL        | VANNE    |
| 0509 | 900319073 | PULEGGIA | PULLEY     | RIEMENSCHIEBE | POULIE   |

|      |           |              |               |                |            |
|------|-----------|--------------|---------------|----------------|------------|
| 9351 | 900270526 | PEDALIERA    | CONTROL PEDAL | PEDALERIE      | GR.PEDALES |
| 0320 | 900452011 | BOCCOLA      | BUSHING       | LAGER          | DOUILLE    |
| 0365 | 900422682 | SILENZIATORE | SILENCER      | SCHALLDAEMPFER | SILENCIEUX |
| 0368 | 900415860 | RACCORDO     | CONNECTOR     | ANSCHLUSS      | RACCORD    |
| 0370 | 900229059 | RUBINETTO    | COCK          | HAHN           | ROBINET    |
| 0374 | 900329058 | PIASTRINA    | PLATE         | PLAETTCHEN     | PLAQUETTE  |
| 0375 | 900331381 | BIELLA       | TRACE         | PLEUELSTANGE   | BIELLE     |
| 0377 | 900352029 | PEDALE       | PEDAL         | PEDAL          | PEDALE     |

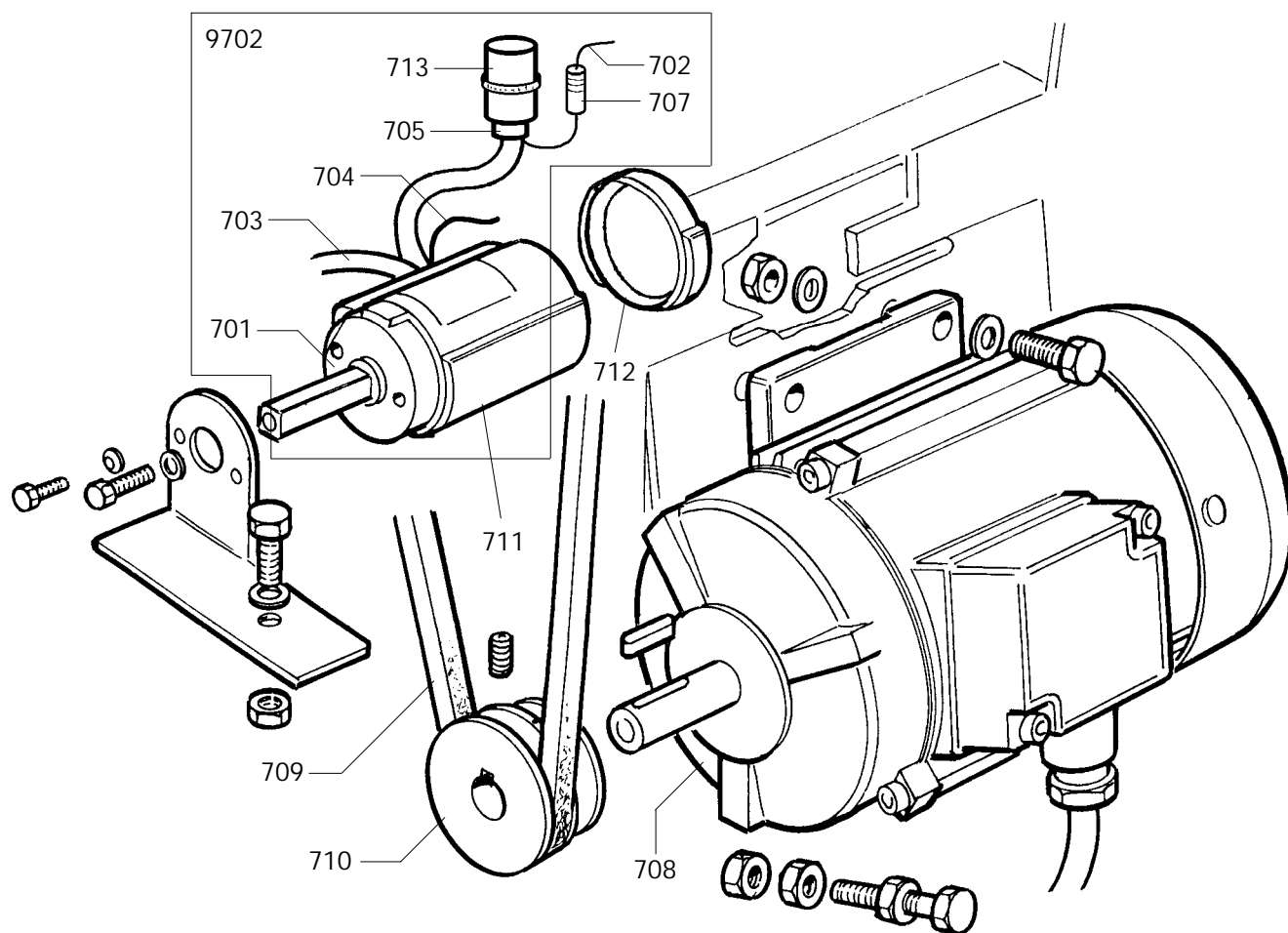




|      |           |      |      |      |       |
|------|-----------|------|------|------|-------|
| Ø 6  | 900701684 | TUBO | PIPE | ROHR | TUYAU |
| Ø 8  | 900701683 | TUBO | PIPE | ROHR | TUYAU |
| Ø 10 | 900701875 | TUBO | PIPE | ROHR | TUYAU |

|      |           |                   |                |                     |                 |
|------|-----------|-------------------|----------------|---------------------|-----------------|
| 9952 | 900252598 | SCATOLA - BAR     | BOX - BAR      | SCHACHTEL - BAR     | BOITE - BAR     |
| 9952 | 900252599 | SCATOLA - BAR/PSI | BOX - BAR/PSI  | SCHACHTEL - BAR/PSI | BOITE - BAR/PSI |
| 0934 | 900235462 | TUBO              | PIPE           | ROHR                | TUYAU           |
|      |           | MANOMETRO         | PRESSURE GAUGE | DRUCKMESSER         | MANOMETRE       |
| 0933 | 900434175 | BAR               | BAR            | BAR                 | BAR             |
| 0933 | 900437831 | BAR - PSI         | BAR - PSI      | BAR - PSI           | BAR - PSI       |
| 0908 | 900235463 | VALVOLA           | VALVE          | VENTIL              | VANNE           |
| 1008 | 900352614 | TUBO aria         | PIPE           | ROHR                | TUYAU           |
| 1009 | 900434180 | RACCORDO          | CONNECTOR      | ANSCHLUSS           | RACCORD         |
| 1014 | 900429536 | INNESTO           | CLUTCH         | KUPPLUNG            | EMBRAYAGE       |

|      |           |          |           |           |         |
|------|-----------|----------|-----------|-----------|---------|
| 9953 | 801252558 | VALVOLA  | VALVE     | VENTIL    | VANNE   |
| 0945 | 900452553 | VALVOLA  | VALVE     | VENTIL    | VANNE   |
| 1012 | 900446939 | RACCORDO | CONNECTOR | ANSCHLUSS | RACCORD |
| 1013 | 900352557 | RACCORDO | CONNECTOR | ANSCHLUSS | RACCORD |



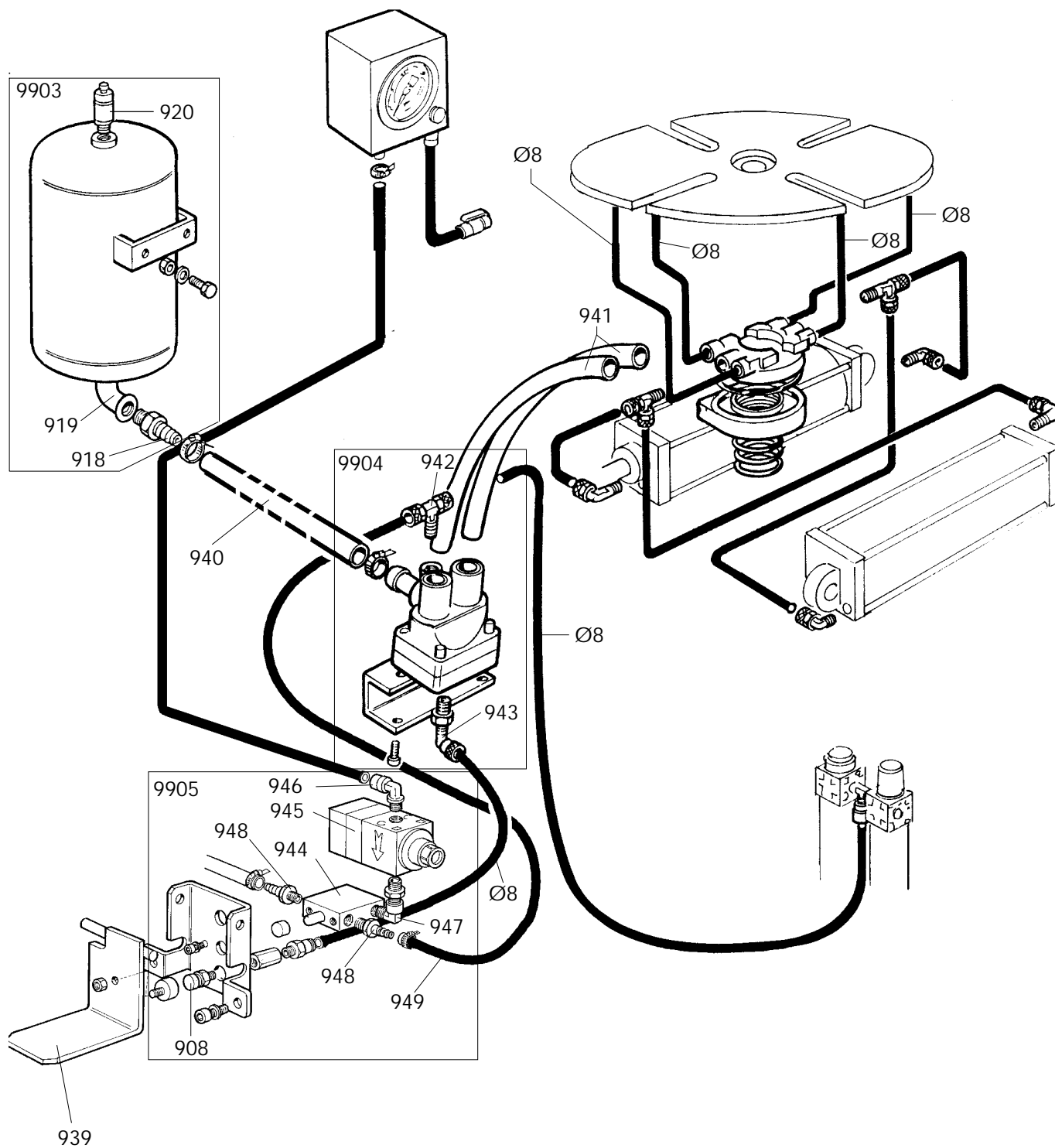
## IMPIANTO ELETTRICO/ELECTRIC SYSTEM ELEKTRISCHE ANLAGE INSTALL. ELECTRIQUE


| 9702 | 900249882 | 110V 1ph     | 110V 1ph   | 110V 1ph        | 110V 1ph     |
|------|-----------|--------------|------------|-----------------|--------------|
| 0701 | 900435363 | INVERTITORE  | REVERSER   | RICHTUNGSWENDER | INVERSEUR    |
| 0702 | 900230709 | CAVO         | CABLE      | KABEL           | CABLE        |
| 0703 | 900225419 | CAVO         | CABLE      | KABEL           | CABLE        |
| 0704 | 900225438 | CAVALLOTTO   | U-BOLT     | BUEGELBOLZEN    | CRAMPILLON   |
| 0705 | 900430750 | CAPPELLOTTA  | CAP NUT    | ABSCHLUSSKAPPE  | CAPUCHON     |
| 0707 | 900430770 | RESISTENZA   | RESISTANCE | WIDERSTAND      | RESISTANCE   |
| 0713 | 900449751 | CONDENSATORE | CAPACITOR  | KONDENSATOR     | CONDENSATEUR |

| 9702 | 900249881 | 220V 1ph     | 220V 1ph   | 220V 1ph        | 220V 1ph     |
|------|-----------|--------------|------------|-----------------|--------------|
| 0701 | 900421523 | INVERTITORE  | REVERSER   | RICHTUNGSWENDER | INVERSEUR    |
| 0702 | 900235520 | CAVO         | CABLE      | KABEL           | CABLE        |
| 0703 | 900225419 | CAVO         | CABLE      | KABEL           | CABLE        |
| 0704 | 900225051 | CAVALLOTTO   | U-BOLT     | BUEGELBOLZEN    | CRAMPILLON   |
| 0705 | 900414850 | CAPPELLOTTA  | CAP NUT    | ABSCHLUSSKAPPE  | CAPUCHON     |
| 0707 | 900430770 | RESISTENZA   | RESISTANCE | WIDERSTAND      | RESISTANCE   |
| 0713 | 900449750 | CONDENSATORE | CAPACITOR  | KONDENSATOR     | CONDENSATEUR |

| 9702 | 900235574 | 3ph         | 3ph      | 3ph             | 3ph        |
|------|-----------|-------------|----------|-----------------|------------|
| 0701 | 900421523 | INVERTITORE | REVERSER | RICHTUNGSWENDER | INVERSEUR  |
| 0702 | 900235518 | CAVO        | CABLE    | KABEL           | CABLE      |
| 0703 | 900225390 | CAVO        | CABLE    | KABEL           | CABLE      |
| 0704 | 900225051 | CAVALLOTTO  | U-BOLT   | BUEGELBOLZEN    | CRAMPILLON |

|      |           | MOTORE        | MOTOR         | MOTOR         | MOTEUR        |
|------|-----------|---------------|---------------|---------------|---------------|
| 0708 | 950412959 | 380V 3ph      | 380V 3ph      | 380V 3ph      | 380V 3ph      |
| 0708 | 900426793 | 260/440V 3ph  | 260/440V 3ph  | 260/440V 3ph  | 260/440V 3ph  |
| 0708 | 900449747 | 220V 1ph 50Hz | 220V 1ph 50Hz | 220V 1ph 50Hz | 220V 1ph 50Hz |
| 0708 | 900449748 | 220V 1ph 60Hz | 220V 1ph 60Hz | 220V 1ph 60Hz | 220V 1ph 60Hz |
| 0708 | 900449749 | 110V 1ph 60Hz | 110V 1ph 60Hz | 110V 1ph 60Hz | 110V 1ph 60Hz |
| 0709 | 900426352 | CINGHIA       | BELT          | RIEMEN        | COURROIE      |
| 0710 | 900325274 | PULEGGIA      | PULLEY        | RIEMENSCHIEBE | POULIE        |
| 0711 | 900432065 | PROTEZIONE    | SHIELD        | ABDECKUNG     | PROTECTION    |
| 0712 | 900430991 | COPERCHIO     | LID           | DECKEL        | COUVERCLE     |



|  |       |        |       |               |
|--|-------|--------|-------|---------------|
|  | JOLLY | Fig. L | 09/97 | Versione T.I. |
|--|-------|--------|-------|---------------|

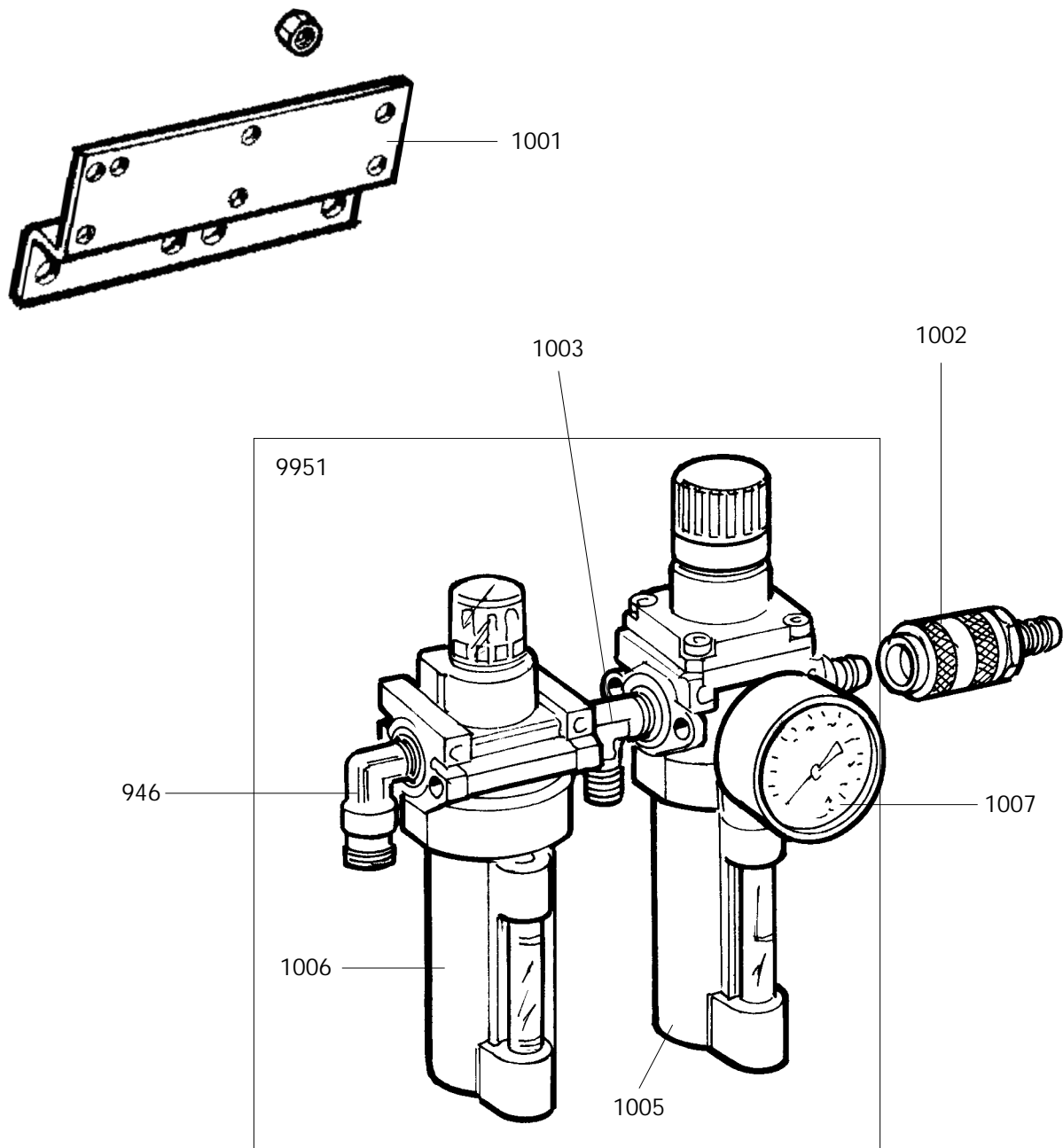
|     |           |      |      |      |       |
|-----|-----------|------|------|------|-------|
| Ø 6 | 900701684 | TUBO | PIPE | ROHR | TUYAU |
| Ø 8 | 900701683 | TUBO | PIPE | ROHR | TUYAU |

|      |           |                   |            |           |          |
|------|-----------|-------------------|------------|-----------|----------|
| 9905 | 900252568 | GRUPPO gonfiaggio | ASSEMBLY   | GRUPPE    | GROUPE   |
| 0908 | 900235463 | VALVOLA           | VALVE      | VENTIL    | VANNE    |
| 0944 | 900452564 | VALVOLA           | VALVE      | VENTIL    | VANNE    |
| 0945 | 900452553 | VALVOLA           | VALVE      | VENTIL    | VANNE    |
| 0946 | 900450406 | RACCORDO          | CONNECTOR  | ANSCHLUSS | RACCORD  |
| 0947 | 900418252 | NIPPLO            | CONNECTION | NIPPEL    | NIPPLE   |
| 0948 | 900421137 | INNESTO           | CLUTCH     | KUPPLUNG  | EMBAYAGE |
| 1008 | 900352614 | TUBO aria         | PIPE       | ROHR      | TUYAU    |

|      |           |           |           |           |           |
|------|-----------|-----------|-----------|-----------|-----------|
| 9903 | 900240968 | SERBATOIO | TANK      | TANK      | RESERVOIR |
| 0918 | 900337704 | RACCORDO  | CONNECTOR | ANSCHLUSS | RACCORD   |
| 0919 | 900438995 | RACCORDO  | CONNECTOR | ANSCHLUSS | RACCORD   |
| 0920 | 900435077 | VALVOLA   | VALVE     | VENTIL    | VANNE     |

|      |           |          |           |           |         |
|------|-----------|----------|-----------|-----------|---------|
| 9904 | 900241124 | VALVOLA  | VALVE     | VENTIL    | VANNE   |
| 0942 | 900438665 | RACCORDO | CONNECTOR | ANSCHLUSS | RACCORD |
| 0943 | 900441651 | RACCORDO | CONNECTOR | ANSCHLUSS | RACCORD |

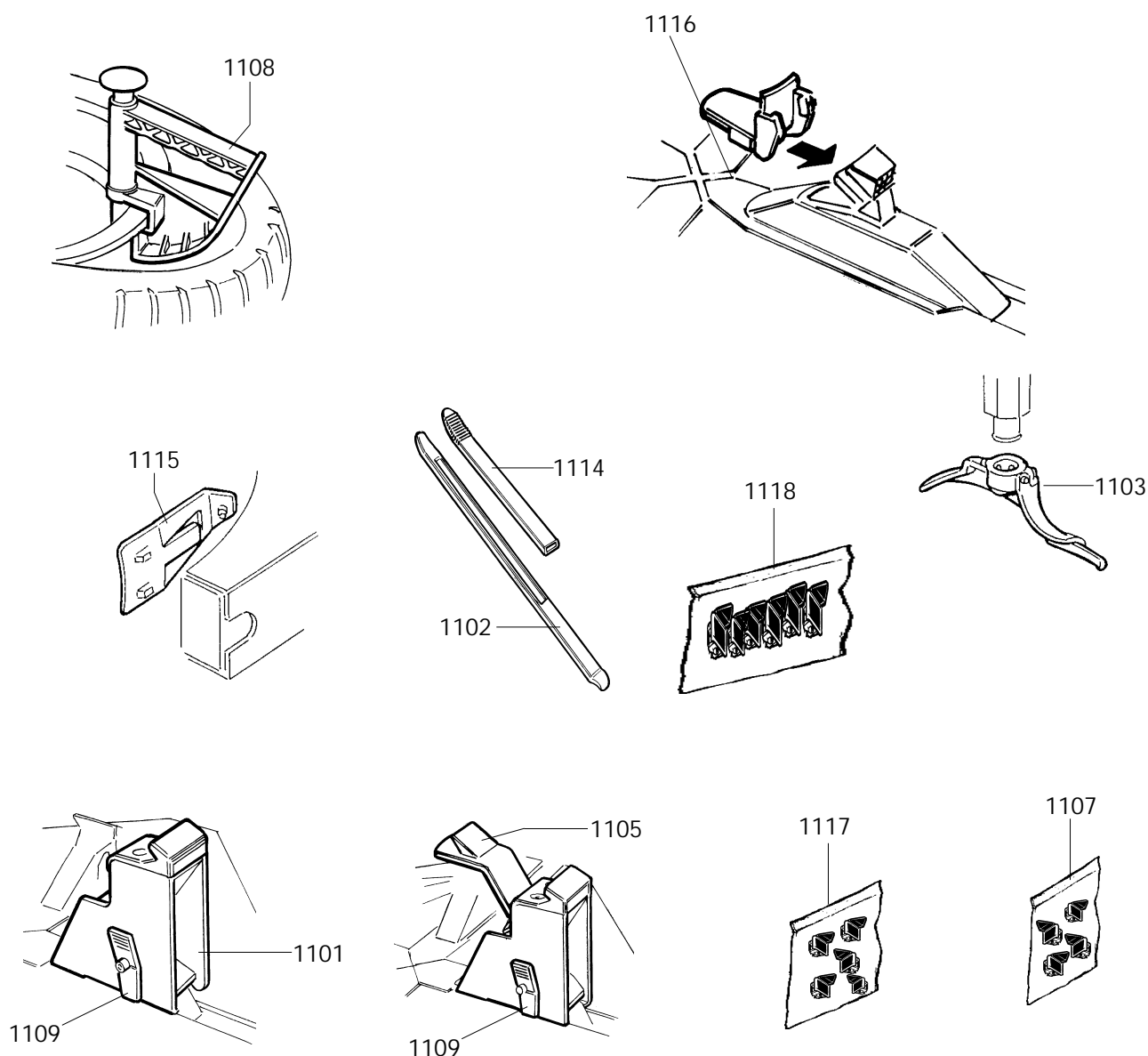
|      |           |        |       |       |        |
|------|-----------|--------|-------|-------|--------|
| 0939 | 900252625 | PEDALE | PEDAL | PEDAL | PEDALE |
| 0940 | 900343626 | TUBO   | PIPE  | ROHR  | TUYAU  |
| 0941 | 900341156 | TUBO   | PIPE  | ROHR  | TUYAU  |



|      |           |          |           |           |             |
|------|-----------|----------|-----------|-----------|-------------|
| 0946 | 900450406 | RACCORDO | CONNECTOR | ANSCHLUSS | RACCORD     |
| 1001 | 900335695 | STAFFA   | BRACKET   | KLAUE     | ETRIER      |
| 1002 | 900441899 | GIUNTO   | COUPLING  | KUPPLUNG  | ACCOUPEMENT |
| 1003 | 900433873 | RACCORDO | CONNECTOR | ANSCHLUSS | RACCORD     |

|      |           |           |        |        |        |
|------|-----------|-----------|--------|--------|--------|
| 9951 | 900441901 | FILTRO    | FILTER | FILTER | FILTRE |
| 1005 | 900439376 | BICCHIERE | BOWL   | GLAS   | BOL    |
| 1006 | 900439377 | BICCHIERE | BOWL   | GLAS   | BOL    |

|      |           |           |                |             |           |
|------|-----------|-----------|----------------|-------------|-----------|
| 1007 | 900434818 | MANOMETRO | PRESSURE GAUGE | DRUCKMESSER | MANOMETRE |
|------|-----------|-----------|----------------|-------------|-----------|



|      |           | DOTAZIONE    | MACHINE KIT    | LIEFERUMFANG    | EQUIPMENT   |
|------|-----------|--------------|----------------|-----------------|-------------|
| 1102 | 900444288 | LEVA         | LEVER          | HEBEL           | LEVIER      |
|      |           | A RICHIESTA  | OPTIONAL       | SONDERZUBEHÖR   | OPTION      |
| 1101 | 900240461 | ATTACCO      | ADAPTOR        | HALTERUNG       | ATTAQUE     |
| 1105 | 900241065 | PROLUNGA     | EXTENSION CORD | VERLAENGERUNG   | RALLONGE    |
| 1109 | 900440559 | CRICCHETTO   | CRICK          | SPERRKLINKE     | CLIQUET     |
| 1103 | 900228563 | TORRETTA     | HEAD           | DREHKOPF        | TOURELLE    |
| 1107 | 801242613 | INSERTO      | INSERT         | EINLAGE         | INSERT      |
| 1108 | 801435685 | PINZA        | PLIERS         | ZANGE           | PINCE       |
| 1114 | 801246241 | PROTEZIONE   | SHIELD         | ABDECKUNG       | PROTECTION  |
| 1115 | 801225640 | STALLONATORE | BEAD BREAKER   | WULSTABDRUECKER | DETALLONEUR |
| 1116 | 900441172 | PROTEZIONE   | SHIELD         | ABDECKUNG       | PROTECTION  |
| 1117 | 801254342 | PROTEZIONE   | SHIELD         | ABDECKUNG       | PROTECTION  |
| 1118 | 801258383 | PROTEZIONE   | SHIELD         | ABDECKUNG       | PROTECTION  |

Il disegno è realizzato con tutti i particolari ma solo quelli codificati sono forniti come ricambi. L'Azienda si riserva la facoltà di apportare modifiche senza preavviso.



S.S. 468 n°9 - 42015 Correggio (RE) ITALY  
Tel. ++39 0522 639111 - Fax ++39 0522 639150  
[www.corghi.com](http://www.corghi.com) - [info@corghi.com](mailto:info@corghi.com)

The drawing shows all parts but only the coded parts are supplied as spares. The Company reserves the right to make modifications without prior notice.