

Installing the Artiglio 50 Tire Changers

Please follow the listed steps in order while setting up the Artiglio 50 tire changers.

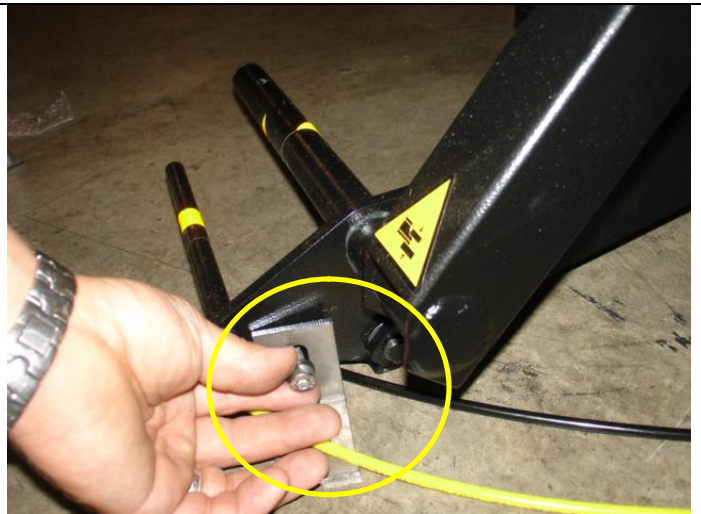
Unbolt the machine and lift from the skid.
(13mm and 17mm wrench and sockets).



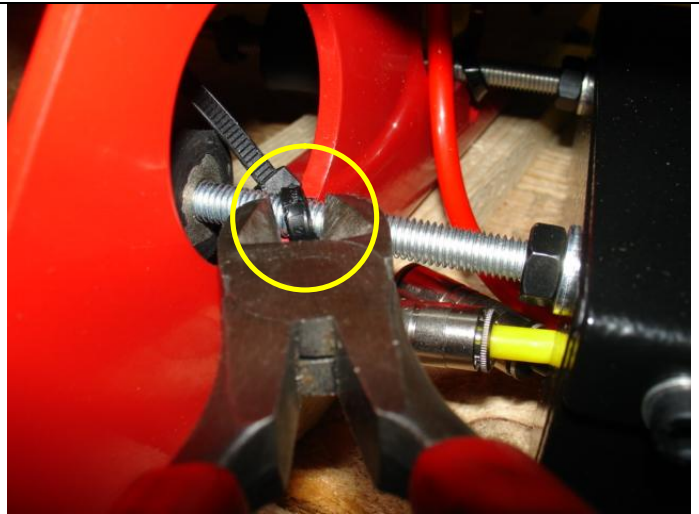
Install Bead Breaker valve assembly.
(6mm Allen key)



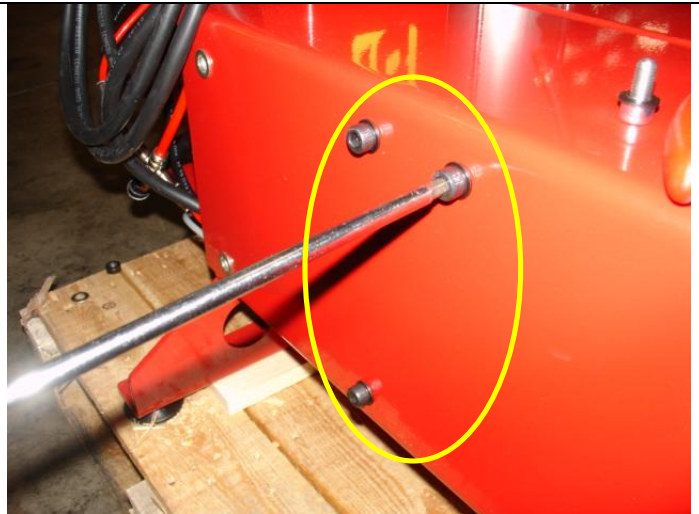
Remove the shipping brackets from the lift.
(6mm Allen key)



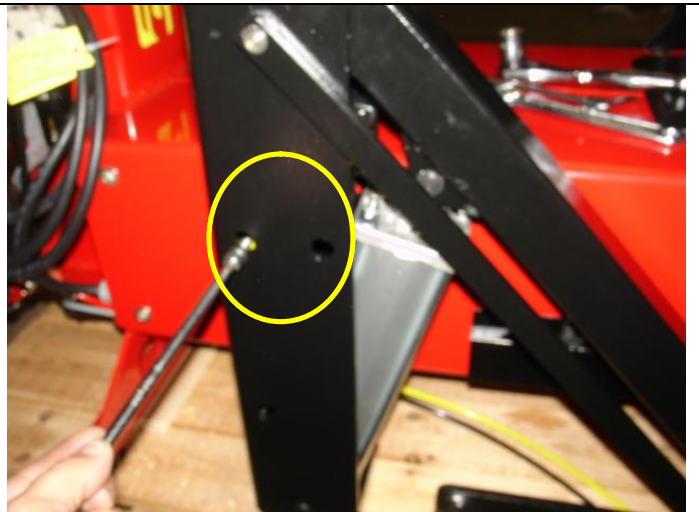
Cut the tie straps off of the lift pedal assemblies.
(Side cuts or dykes needed)



Remove the 3 6mm bolts from the side of the machine.
(6mm Allen key)



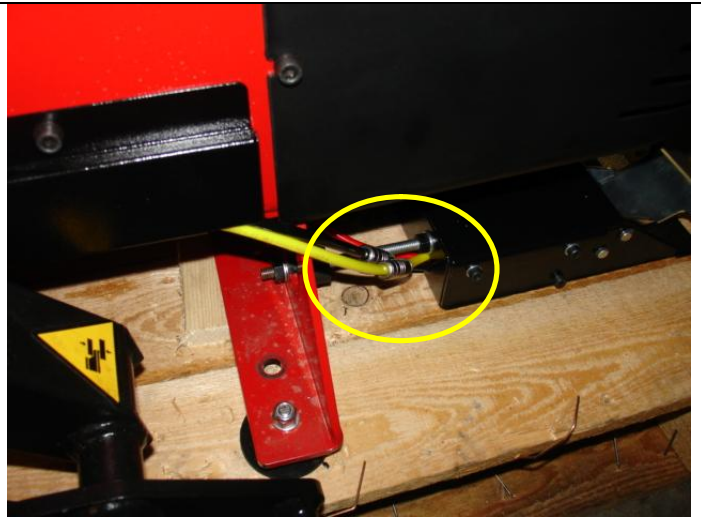
Install the lifts with the 3 6mm bolts from the machine.
(6mm Allen key)



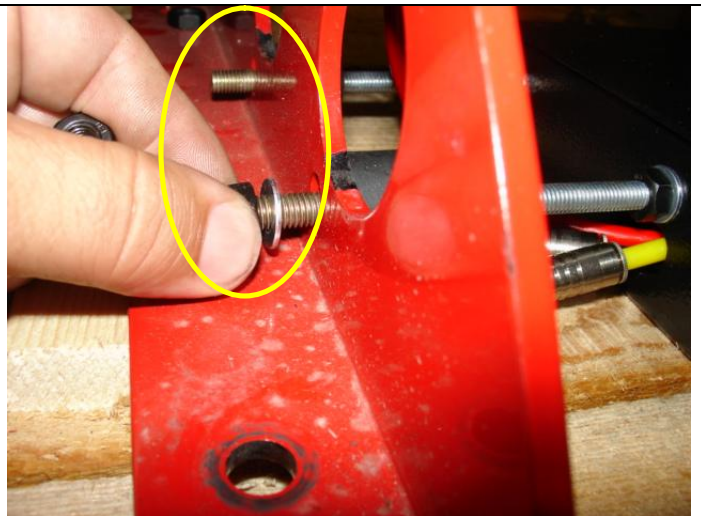
Run the hose behind the black cover on the side of the machine.



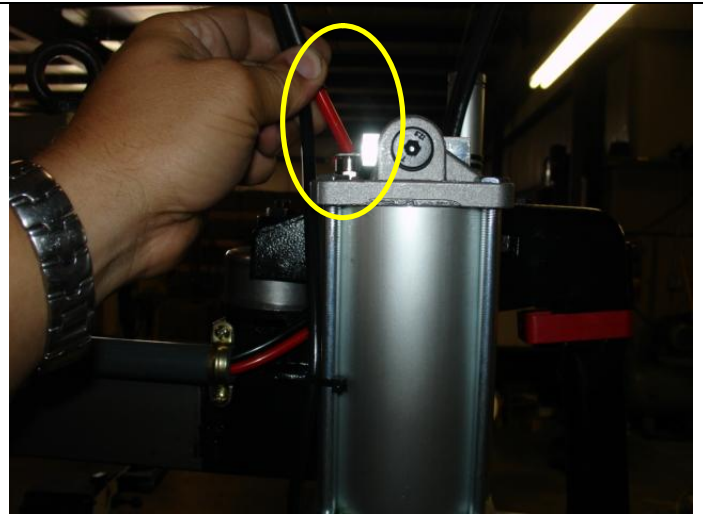
Install the yellow hose to the yellow hose on the foot pedal assembly and the black to the black



Install the lift pedals.
(13mm socket)



Install the red hose to the finger cylinder.



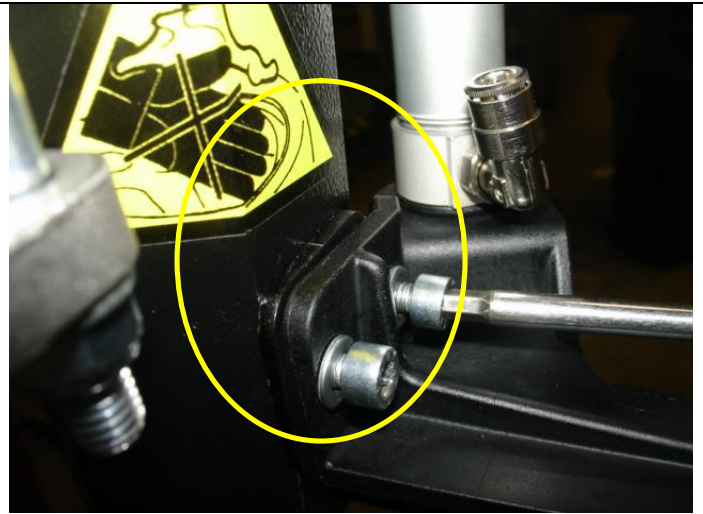
Cut the tie strap around the hex shaft.



Take out the Phillips screw in the hex shaft bracket.
(#1 Phillips screw driver)



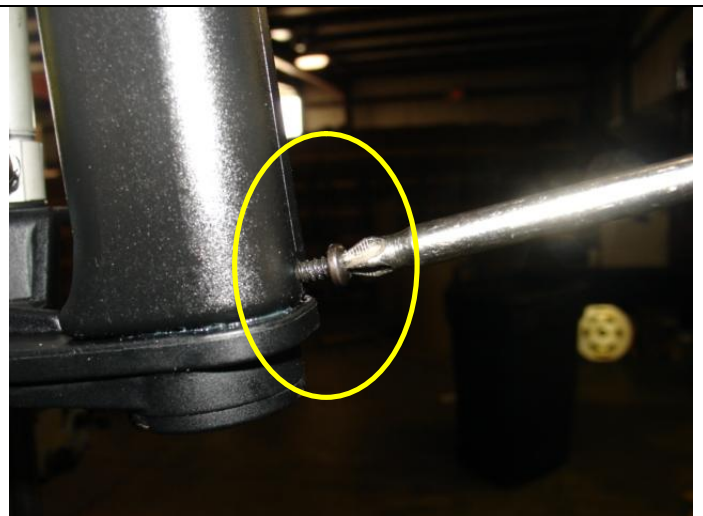
Take out both 5mm hex screws from the locking handle mount holes.
(5mm Allen key)



Assemble stop valve bracket with 2 5mm screws. Black spacer is located between the holes and the mount bracket.
(5mm Allen Key)



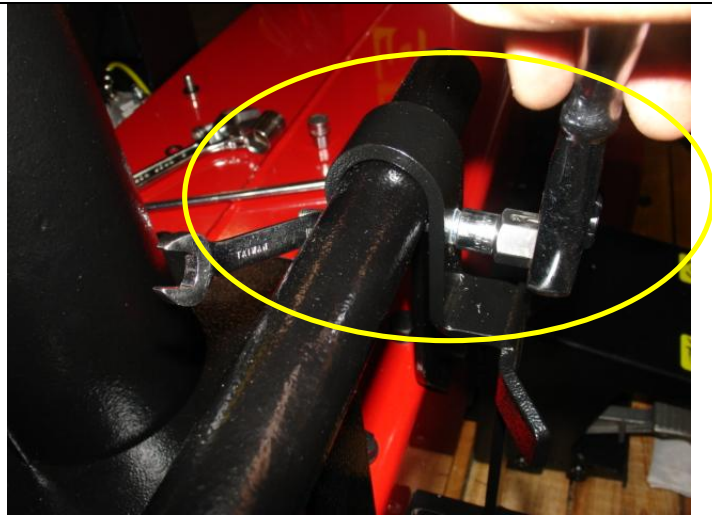
Insert Phillips screw into the locking valve and bracket.
(#1 Phillips screw driver)



Insert black 6mm hose into the elbow connector



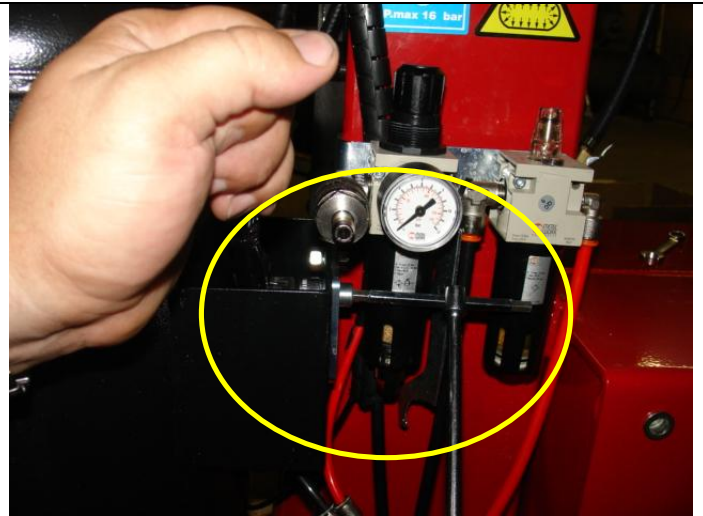
Install lube bucket bracket.
(10mm wrench and socket)



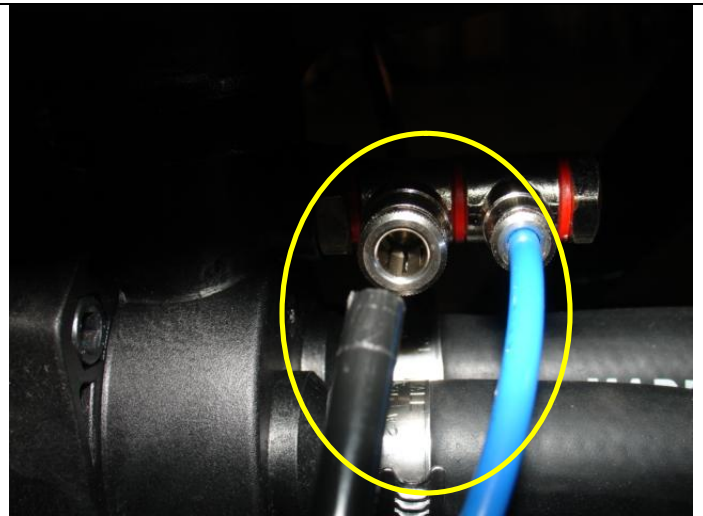
Install bead blast head bracket.
(6mm Allen key)



Install bead blast tank.
(6mm Allen key and 13mm wrench)



Install black 6mm hose from the 4 way connector to the
bead blast valve.



After hooking up the air, cut the string located on the
Arm swing valve.
(side cutters or knife)

