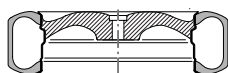
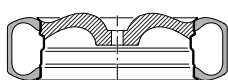


WHEEL CENTERING ACCESSORIES



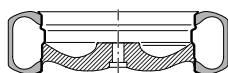
A

I - cerchio standard
GB - Standard rim
F - Jante Standard
D - Standardradfelge
E - Llanta estándar



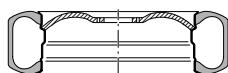
B

I - cerchio con foro incassato
GB - Dropped center hole rim
F - Jante avec trou encastré
D - Radfelge mit versenkter Bohrung
E - Llanta de agujero interno



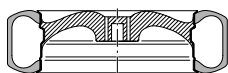
C

I - cerchio a canale rovescio
GB - Reversed rim
F - Jante à canal renversé
D - Radfelge mit verdrehtem Kanal
E - Llanta de acanaladura invertida



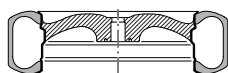
D

I - cerchio per furgone
GB - Pick-up rim
F - Jante pour fourgons
D - Radfelge für Transporter
E - Llanta para furgonetas



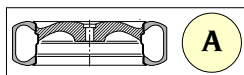
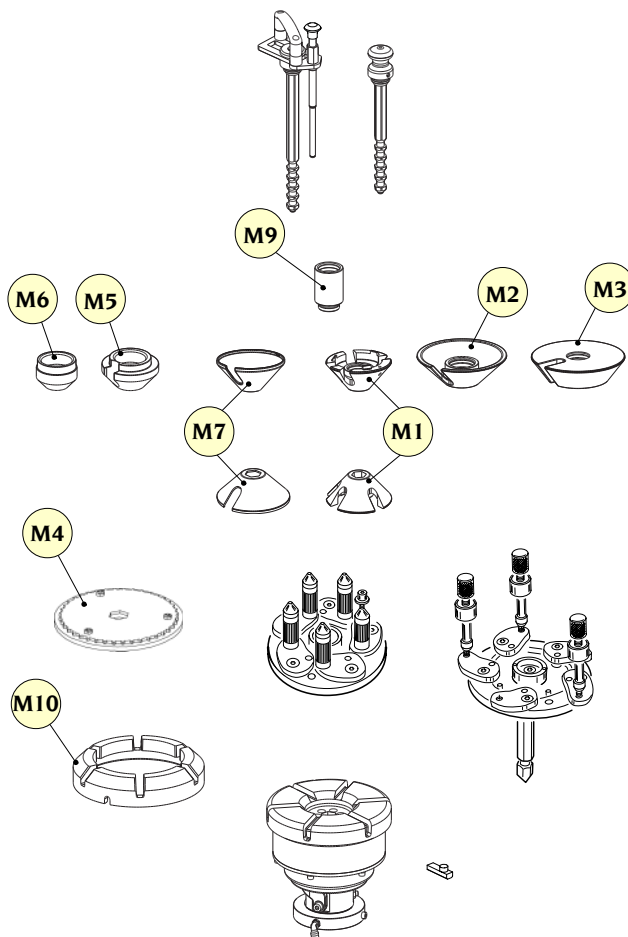
E

I - cerchio senza foro centrale
GB - Closed center rim
F - Jante sans trou central
D - Radfelge ohne Zentralbohrung
E - Llanta sin hueco central

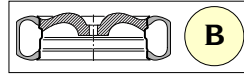
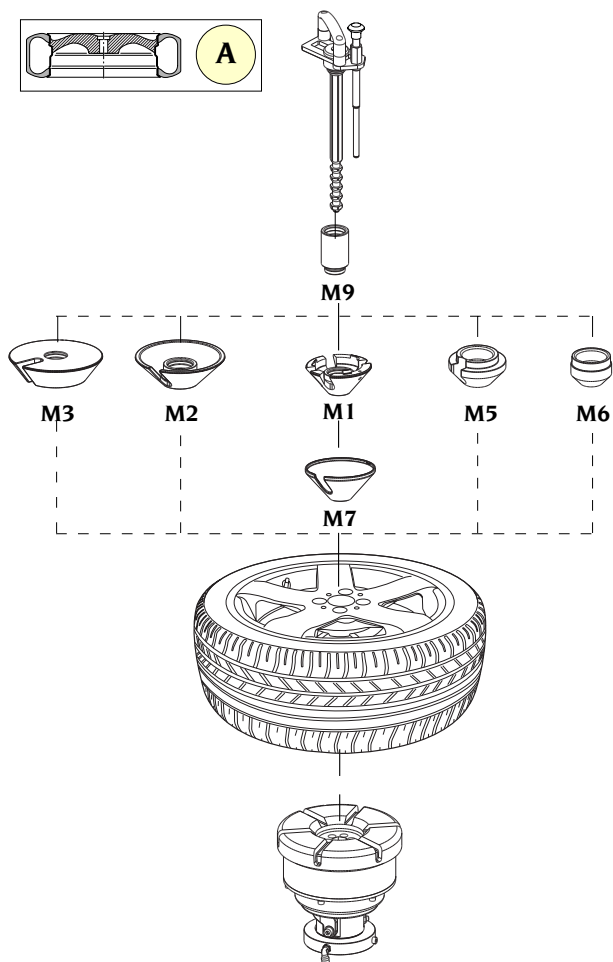


F

I - cerchio monoforo
GB - Single-hole rim
F - Jante à un seul trou
D - Radfelge mit einer Bohrung
E - Llanta de hueco único



A



B

