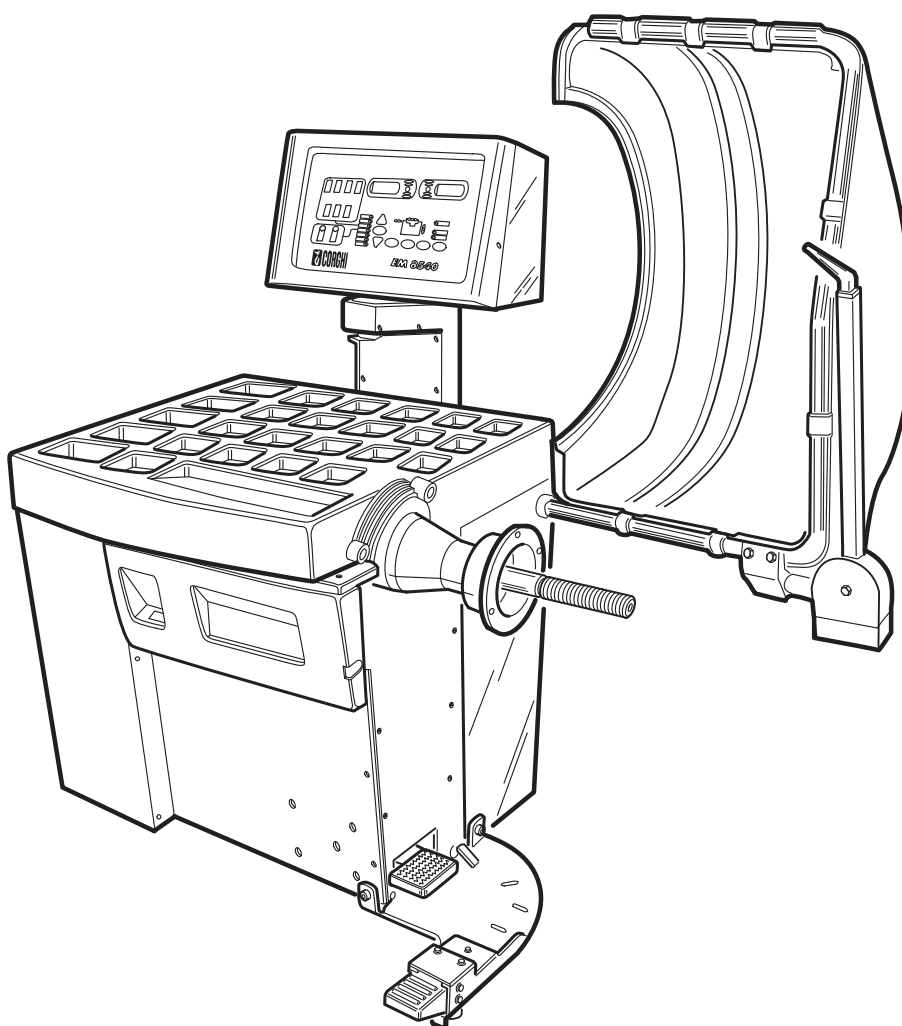


Questo libretto non autorizza l'utente ad intervenire sulle macchine ad esclusione di quanto esplicitamente descritto nel Manuale d'uso, ma consente all'utente di fornire informazioni precise all'Assistenza tecnica, al fine di ridurre i tempi di intervento.

EM8540 N.A. D40

The "Spare parts" booklet does not authorize the user to carry out work on the machine unless expressly specified in the instruction manual, but does enable him to provide accurate information to the assistance service in order to reduce downtime.

PEZZI DI RICAMBIO SPARE PARTS LIST ERSATZTEILLISTE PIECES DE RECHANGE



Code

4-I05225B

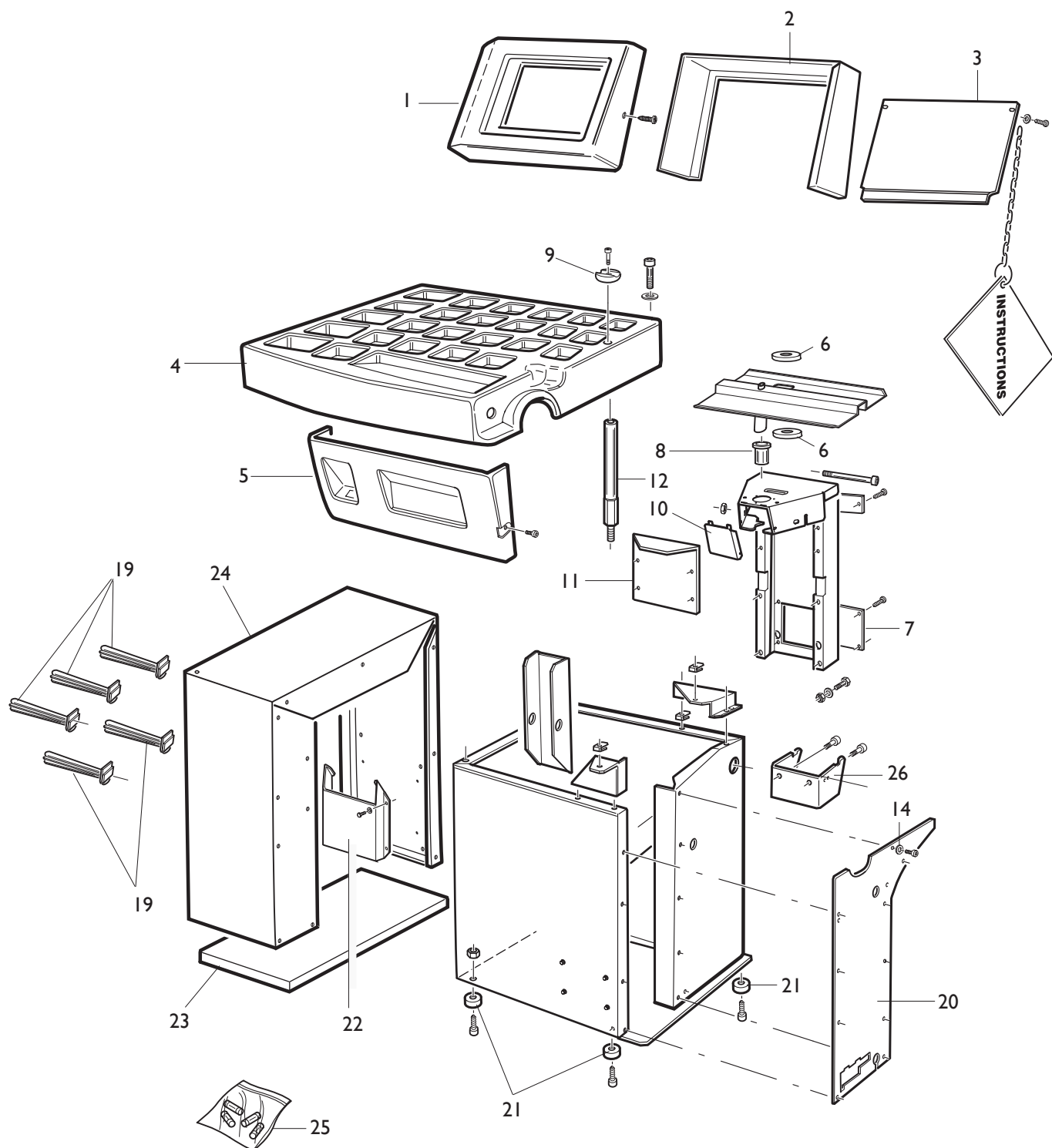
Production from

12 / 2007

Der Katalog Ersatzteile stellt keine Genehmigung zu eigenmächtigen Eingriffen dar (mit Ausnahme jener im Handbuch beschrieben), sondern er soll den Anwender in die Lage versetzen, dem technischen Service präzise Informationen zu liefern, um die Reparaturzeiten zu verkürzen.




Le livret "Pièces de rechange", n'autorise pas l'utilisateur à intervenir sur les machines, sauf pour tout ce qui est clairement décrit dans le manuel d'utilisation, mais lui permet de fournir des informations précises à l'assistance technique, afin de diminuer les délais d'intervention.

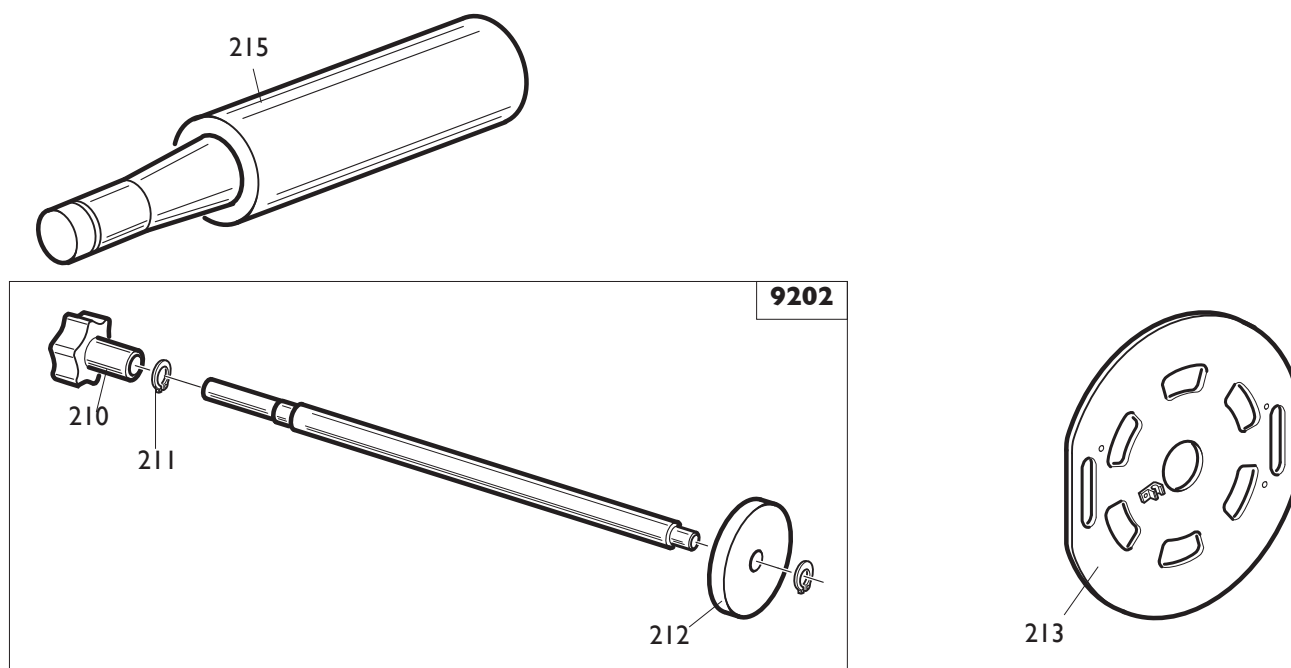
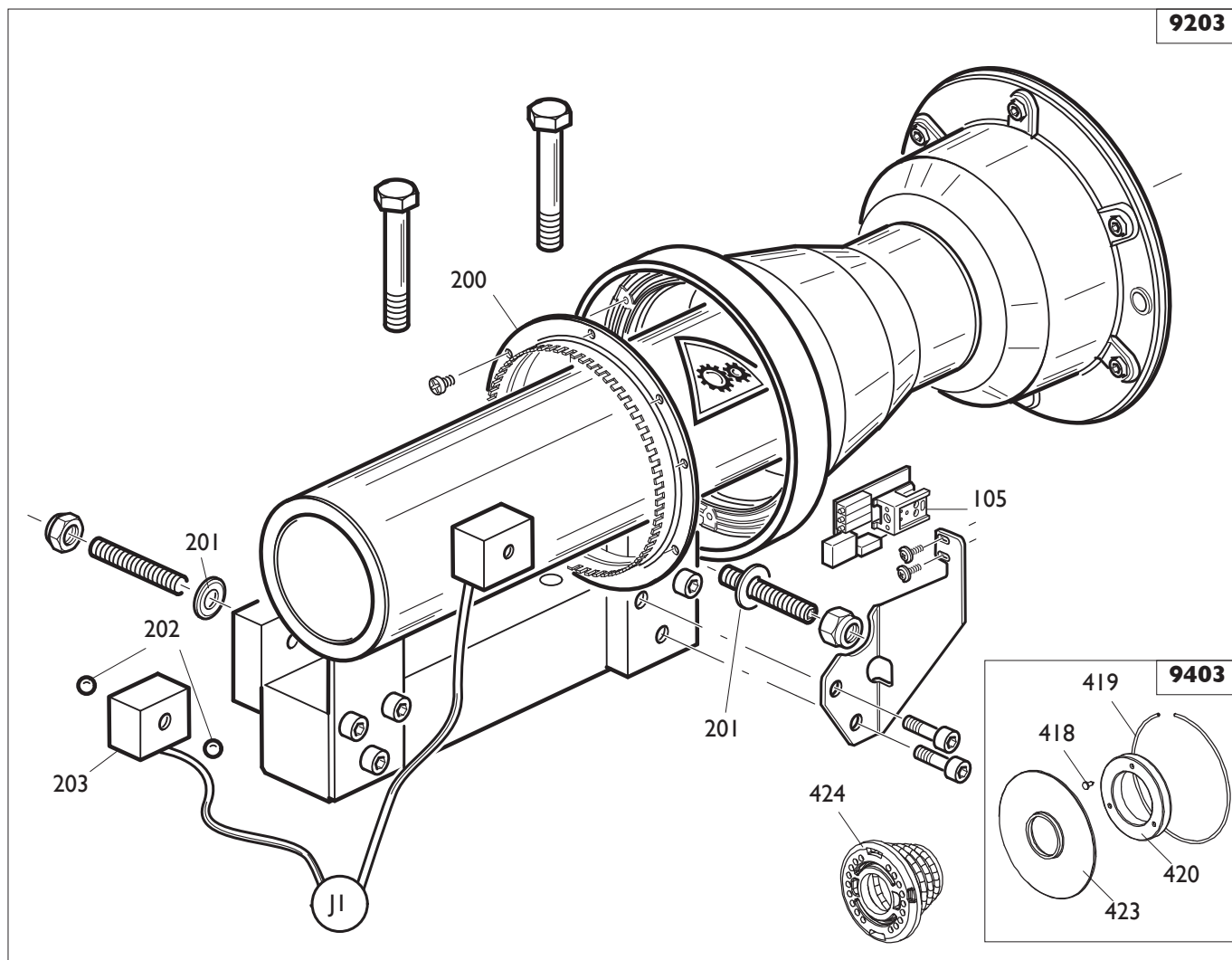


0001	460076	FRONTALE	FRONT PANEL	STIRNBAND	FRONTAL
0002	360074/16	COFANO rosso	HOOD red	HAUBE rot	COFFRE rouge
0002	360074/25	COFANO blu	HOOD blue	HAUBE blau	COFRE bleu
0002	369974/39	COFANO grigio	HOOD gray	HAUBE grau	COFRE gris
0003	360075/16	PANNELLO rosso	PANEL red	VERKLEIDUNG rot	PANNEAU rouge
0003	360075/25	PANNELLO blu	PANEL blue	VERKLEIDUNG blau	PANNEAU bleu
0003	360075/39	PANNELLO grigio	PANEL gray	VERKLEIDUNG grau	PANNEAU gris
0004	4-102895	COPERCHIO	LID	DECKEL	COUVERCLE
0005	4-102926	COFANO	HOOD	HAUBE	COFFRE
0006	455540	PASSACAVO	FAIRLEAD	KABELDURCHFUEHRUNG	PRESSE-ETOUPE
0007	353984	PANNELLO	PANEL	VERKLEIDUNG	PANNEAU
0008	433663	BOCCOLA	BUSHING	LAGER	DOUILLE
0009	336581	INCUDINE	ANVIL	AMBOSS	ENCLUME
0010	360518/16	PANNELLO rosso	PANEL red	VERKLEIDUNG rot	PANNEAU rouge
0010	360518/25	PANNELLO blu	PANEL blue	VERKLEIDUNG blau	PANNEAU bleu
0010	360518/39	PANNELLO grigio	PANEL gray	VERKLEIDUNG grau	PANNEAU gris
0011	360069/16	CARTER rosso	CASING red	GEHAUSE rot	CARTER rouge
0011	360069/25	CARTER blu	CASING blue	GEHAUSE blau	CARTER bleu
0011	360069/39	CARTER grigio	CASING gray	GEHAUSE grau	CARTER gris
0012	4-102899	SUPPORTO	SUPPORT	LAGER	SUPPORT
0014	453504	RONDELLA	WASHER	UNTERLEGSCHIEBE	RONDELLE
0019	438319	SUPPORTO	SUPPORT	LAGER	SUPPORT
0020	4-101926	COFANO	HOOD	HAUBE	COFFRE
0021	360368	PIEDE	FOOT	FUSS	PIED
0022	355994	CONENITORE	CONTAINER	BEHAELTER	CONTENEUR
0023	360345/16	RINFORZO rosso	REINFORCEMENT red	VERSTAERKUNG rot	RENFORT rouge
0023	360345/25	RINFORZO blu	REINFORCEMENT blue	VERSTAERKUNG blau	RENFORT bleu
0023	360345/39	RINFORZO grigio	REINFORCEMENT gray	VERSTAERKUNG grau	RENFORT gris
0024	360047/16	MOBILE rosso	CABINET red	SCHRANK rot	MEUBLE rouge
0024	360047/25	MOBILE blu	CABINET blue	SCHRANK blau	MEUBLE bleu
0024	360047/39	MOBILE grigio	CABINET gray	SCHRANK grau	MEUBLE gris
0025	232942	FUSIBILE 3,15 T	FUSE 3,15 T	SICHERUNG 3,15 T	FUSIBLE 3,15 T
0025	229690	FUSIBILE 0,5A	FUSE 0,5A	SICHERUNG 0,5A	FUSIBLE 0,5A
0025	236665	FUSIBILE 5A T	FUSE 5A T	SICHERUNG 5A T	FUSIBLE 5A T
0025	241582	FUSIBILE 0,5A T	FUSE 0,5A T	SICHERUNG 0,5A T	FUSIBLE 0,5A T
0025	5-100812	SACCHETTO 3AT	BAG 3AT		
0025	5-100813	SACCHETTO 8AF	BAG 8AF		
0025	5-100814	SACCHETTO 20AT	BAG 20AT		
0026	4-100033	STAFFA	BRACKET	KLAUE	ETRIER



	EM8540 N.A. - D40	Fig. B	07A / 06	Impianto elettrico
--	--------------------------	---------------	-----------------	---------------------------

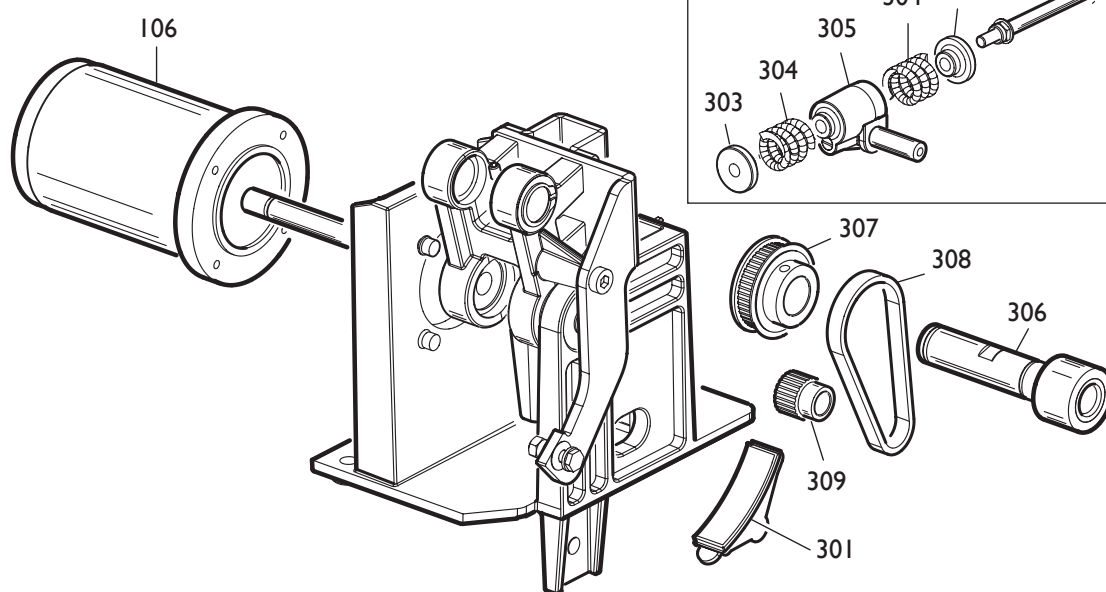
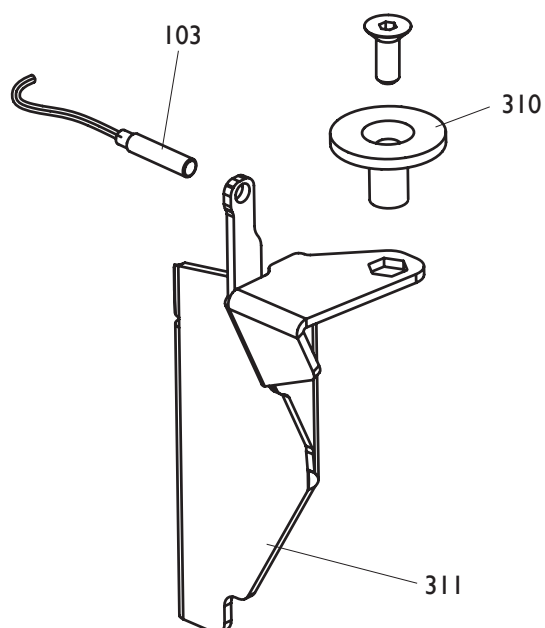
0101	457753	MICROINTERRUTTORE	MICROSWITCH	MIKROSCHALTER	MICROINTERRUPT
0102	241604	CAVO	CABLE	KABEL	CABLE
0103	4-102905	SENSORE	SENSOR	SENSOR	CAPTEURS
0104	4-101837	CAVO	CABLE	KABEL	CABLE
0105	249280	SCHEDA ELETTRONICA	P.C. BOARD	ELEKTR. PLATINE	FICHE ELECTR.
0106	4-101216	MOTORE	MOTOR	MOTOR	MOTEUR
0107	4-101223	ATTUATORE	ACTUATOR	DREHTRIEB	ACTUATEUR
0108	4-101838	CAVO FLAT	FLAT CABLE	FLACHER KABEL	CABLE FLAT
0109	4-101677	CAVO	CABLE	KABEL	CABLE
0110	4-102939	TRASFORMATORE 100-115-230		TRANSFORMER 100-115-230	
0110	4-101700	TRASFORMATORE 115-208-230		TRANSFORMER 115-208-230	
0111	3-01530	FILTRO	FILTER	FILTER	FILTRE
0112	453492	TIRANTE	STAY ROD	ZUGSTANGE	TIRANT
0113	4-104349	MICROINTERRUTTORE	MICROSWITCH	MIKROSCHALTER	MICROINTERRUPT.
0114	4-103608	SCHEDA ELETTRONICA	P.C. BOARD	ELEKTR. PLATINE	FICHE ELECTR.
0115	433848	INTERRUTTORE	SWITCH	SCHALTER	INTERRUPTEUR
0116	4-101674	CAVO	CABLE	KABEL	CABLE
0117	4-103199	CAVO	CABLE	KABEL	CABLE
0118	4-101759	CAVO	CABLE	KABEL	CABLE



	EM8540 N.A. - D40	Fig. C	07 / 06	Gruppo oscillante
--	--------------------------	---------------	----------------	--------------------------

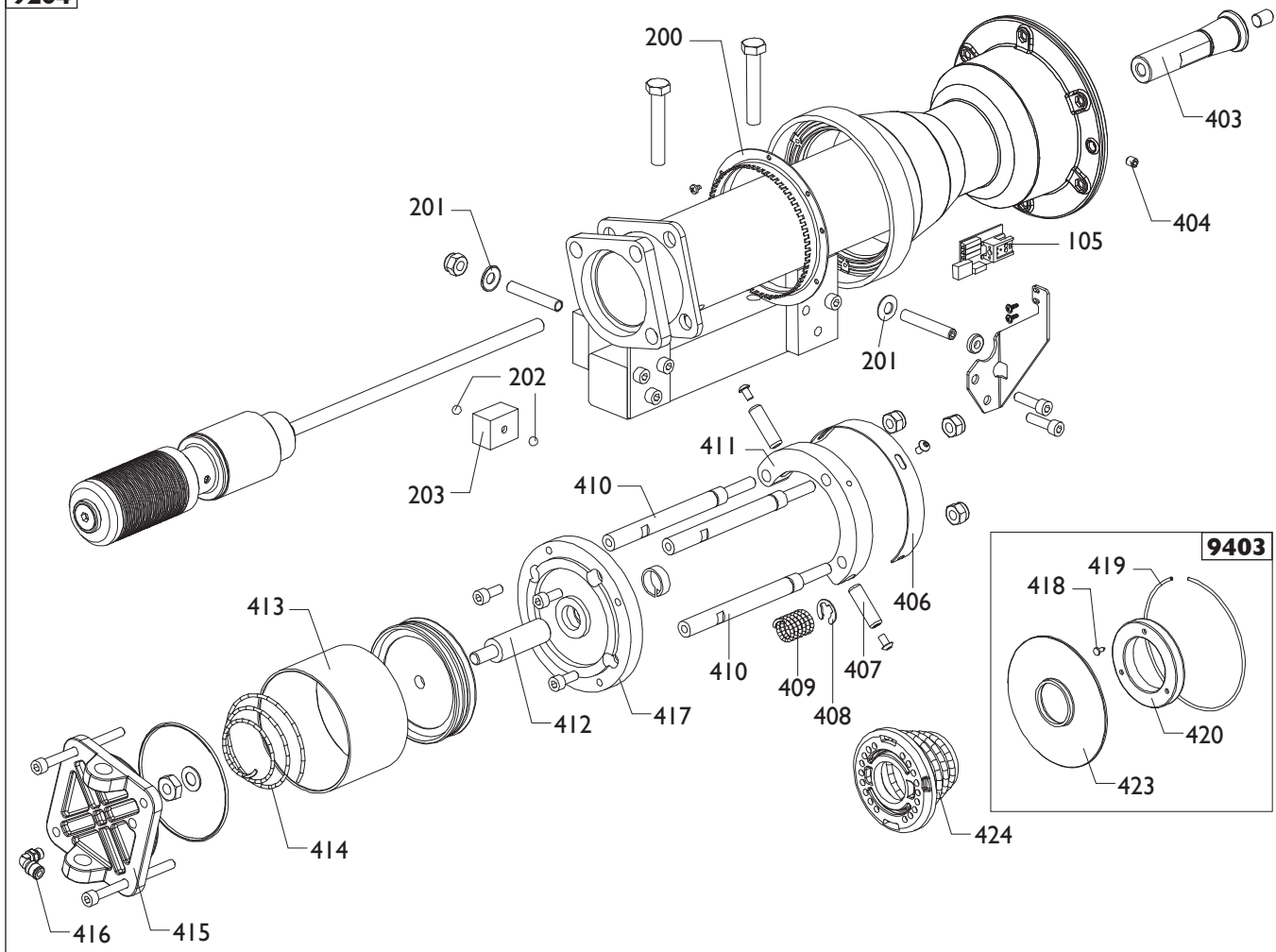
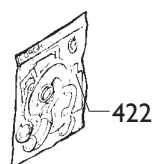
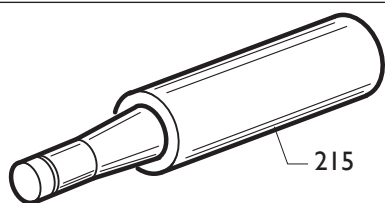
9203	5-100971	GRUPPO	ASSEMBLY	GRUPPE	GROUPE
0200	449310	DISCO	DISK	SCHEIBE	DISQUE
0105	249280	SK ELETTRONICA	P.C. BOARD	ELEKTR. PLATINE	FICHE ELECTR.
0201	424993	MOLLA	SPRING	FEDER	RESSORT
0202	2-00243	SFERA	BALL	KUGEL	BILLE
0203	243591	PICK-UP	PICK-UP	PICK-UP	PICK-UP
0424	5-101468	ANELLO	RING	RING	ANNEAU
9402	5-101667	CENTRAGGIO	SPIGOT	ZENTRIERUNG	CENTRAGE
0418	2-01272	VITE	SCREW	SCHRAUBE	VIS
0419	4-101740	ANELLO	RING	RING	ANNEAU
0420	4-102027	DISTANZIALE	SPACER	ABSTANDSSTUECK	ENTRETOISE
0423	4-103166	DISCO	DISK	SCHEIBE	DISQUE

9202	259719	CONTRAPPESO	COUNTERWEIGHT	GEGENGEWICHT	CONTREPOIDS
0210	459932	MANOPOLA	KNOB	BALLENGRIFF	BOUTON
0211	2-00021	ANELLO	RING	RING	ANNEAU
0212	2-02040	ANELLO	RING	RING	ANNEAU
0213	5-100026	DISCO	DISK	SCHEIBE	DISQUE
0215	5-101514	MOZZO	HUB	NABE	MOYEU

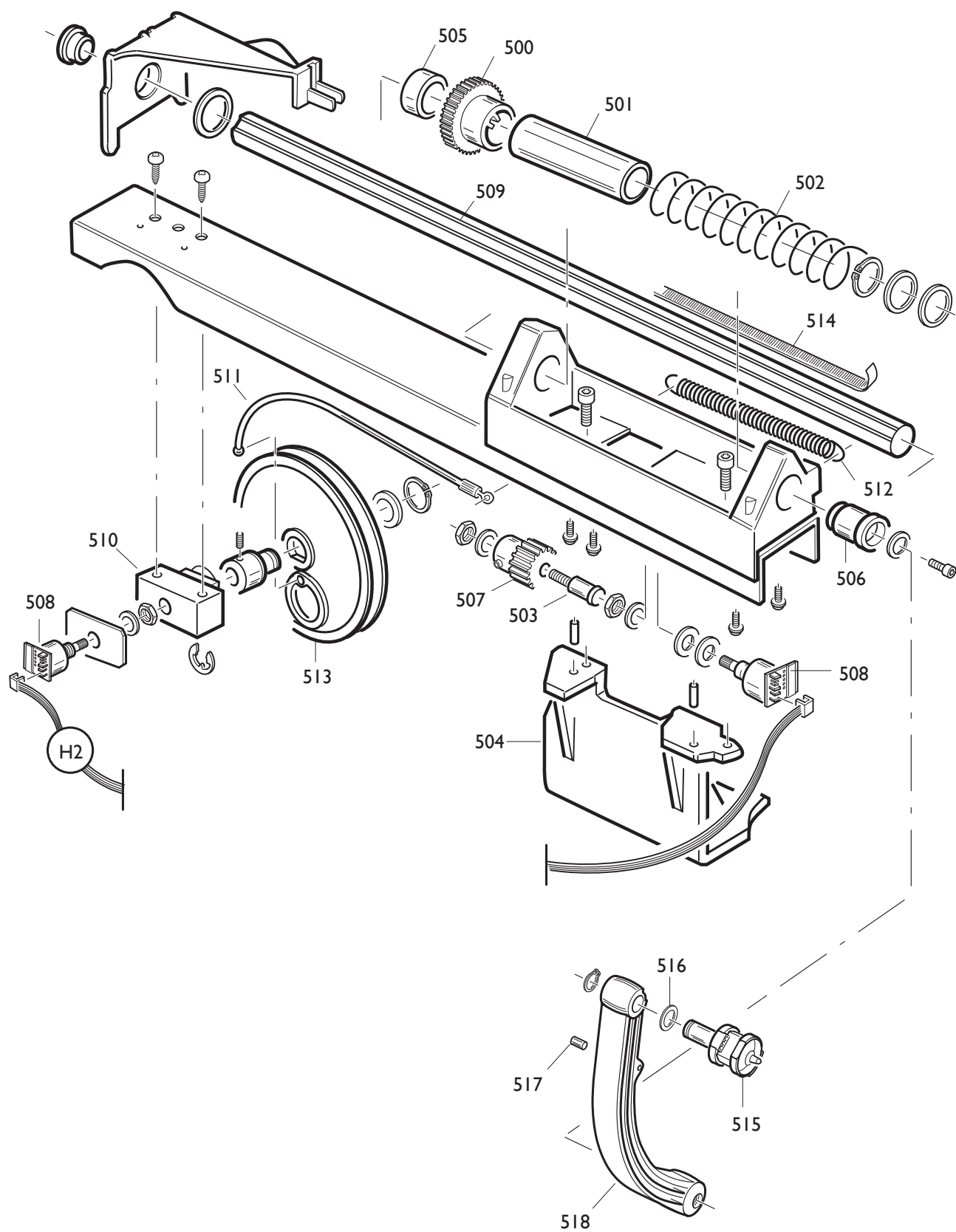
9302

9301


	EM8540 N.A. - D40	Fig. D	07 / 06	Dispositivo di lancio
--	--------------------------	---------------	----------------	------------------------------

9302	5-100405	GRUPPO	ASSEMBLY	GRUPPE	GROUPE
0106	4-101216	MOTORE	MOTOR	MOTOR	MOTEUR
0301	4-102639	PATTINO	PAD	GLEITSTCHUH	PATIN
9301	5-100411	ATTUATORE	ACTUATOR	DREHTRIEB	ACTUATEUR
0107	4-101223	ATTUATORE	ACTUATOR	DREHTRIEB	ACTUATEUR
0303	4-101224	BOCCOLA	BUSHING	LAGER	DOUILLE
0304	4-101226	MOLLA	SPRING	FEDER	RESSORT
0305	4-101225	BLOCCHETTO	BLOCK	BLOCK	BLOC
0306	4-101220	RULLO	ROLLER	WALZE	ROULEAU
0307	4-101214	PULEGGIA	PULLEY	RIEMENSCHIEBE	POULIE
0308	3-01328	CINGHIA	BELT	RIEMEN	COURROIE
0309	4-101213	PULEGGIA	PULLEY	RIEMENSCHIEBE	POULIE
0310	4-103760	DISCO	DISK	SCHEIBE	DISQUE
0311	4-103767	STAFFA	BRACKET	KLAUE	ETRIER
0103	4-102905	SENSORE	SENSOR	SENSOR	CAPTEURS

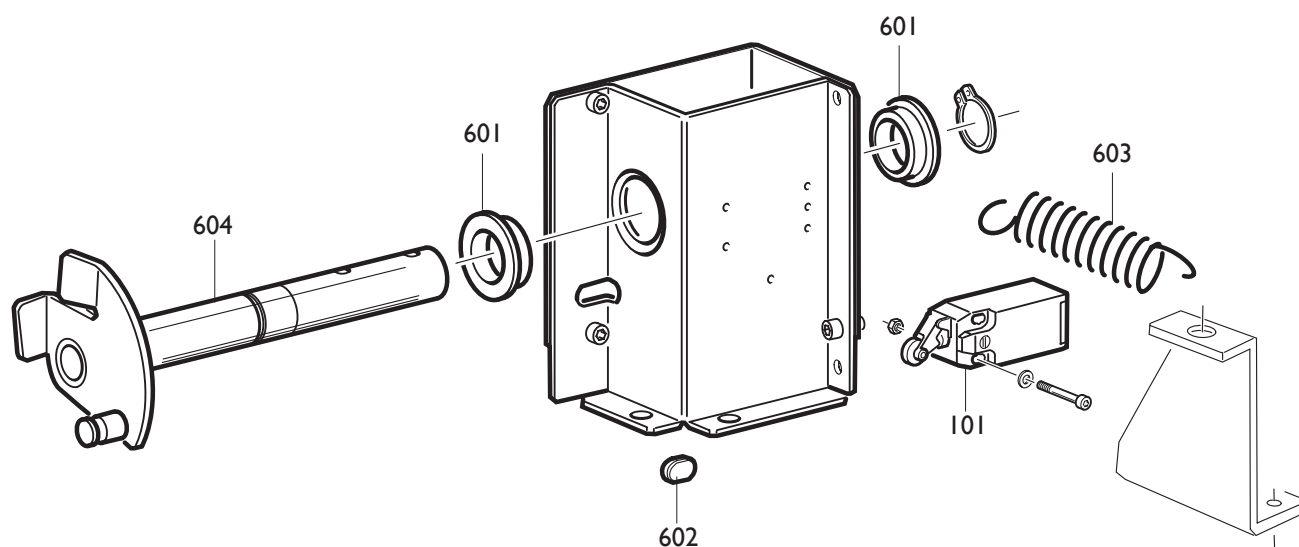
9204

9403


9204	5-100940	GRUPPO	ASSEMBLY	GRUPPE	GROUPE
0200	449310	DISCO	DISK	SCHEIBE	DISQUE
0201	424993	MOLLA	SPRING	FEDER	RESSORT
0202	2-00243	SFERA	BALL	KUGEL	BILLE
0203	243591	PICK-UP	PICK-UP	PICK-UP	PICK-UP
0105	249280	SK ELETTRONICA	P.C. BOARD	ELEKTR. PLATINE	FICHE ELECTR.
0403	4-101311	BLOCCHETTO	BLOCK	BLOCK	BLOC
0404	2-02682	VITE	SCREW	SCHRAUBE	VIS
0406	4-101646	FASCE	BAND	BAND	BANDE
0407	2-03233	SPINA	PLUG	STECKER	FICHE
0408	2-01015	ANELLO	RING	RING	ANNEAU
0409	4-101043	MOLLA	SPRING	FEDER	RESSORT
0410	4-100961	PERNO	PIN	ZAPFEN	PIVOT
0411	4-100960	FLANGIA	FLANGE	FLANSCH	FLASQUE
0412	363434	STELO	STEM	SCHAFT	TIGE
0413	338818	CILINDRO	CYLINDER	ZYLINDER	CYLINDRE
0414	463364	MOLLA	SPRING	FEDER	RESSORT
0415	357265	FLANGIA	FLANGE	FLANSCH	FLASQUE
0416	246439	RACCORDO	CONNECTOR	ANSCHLUSS	RACCORD
0417	4-100962	FLANGIA	FLANGE	FLANSCH	FLASQUE
0424	5-101468	ANELLO	RING	RING	ANNEAU
9403	5-101667	CENTRAGGIO	SPIGOT	ZENTRIERUNG	CENTRAGE
0418	2-01272	VITE	SCREW	SCHRAUBE	VIS
0419	4-101740	ANELLO	RING	RING	ANNEAU
0420	4-102027	DISTANZIALE	SPACER	ABSTANDSSTUECK	ENTRETOISE
0423	4-103166	DISCO	DISK	SCHEIBE	DISQUE
0422	5-100949	KIT GUARNIZIONI	SEALS KIT	DICHTUNGSATZ	KIT JOINTS
0215	5-101514	MOZZO	HUB	NABE	MOYEU

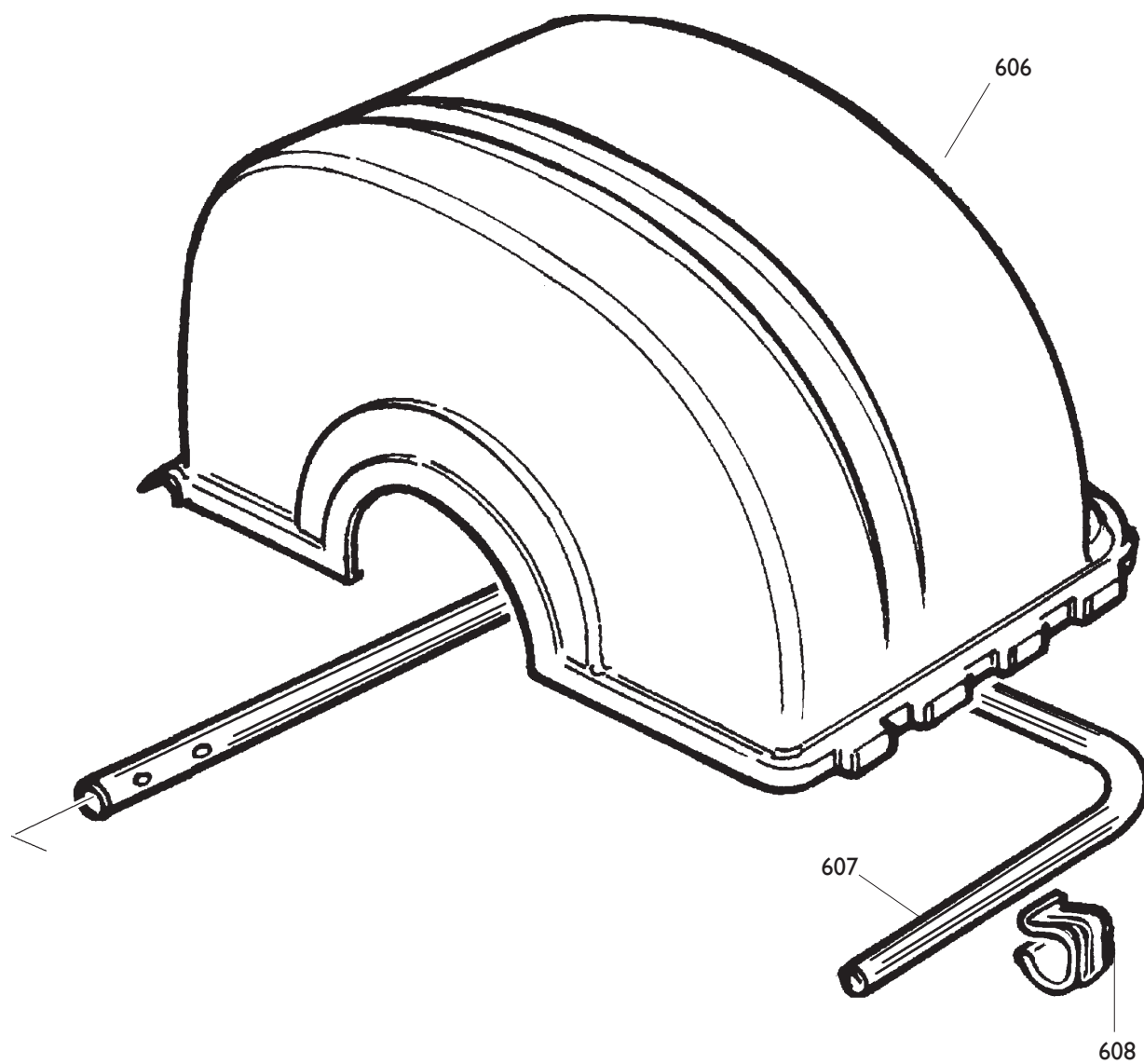


	EM8540 N.A. - D40	Fig. F	07 / 06	Gruppo rilevatore
--	--------------------------	---------------	----------------	--------------------------

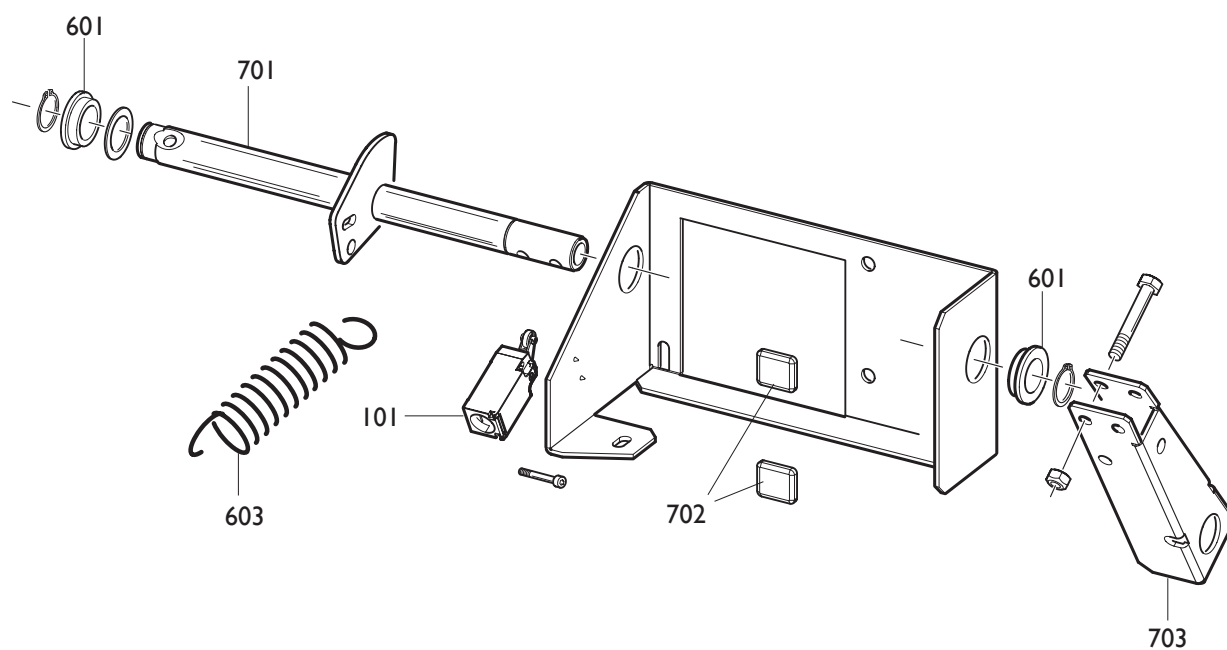
0500	35024229	INGRANAGGIO	GEAR	ZAHNRADGETRIEBE	ENGRENAGE
0501	4-102889	DISTANZIALE	SPACER	ABSTANDSSTUECK	ENTRETOISE
0502	4-102886	MOLLA	SPRING	FEDER	RESSORT
0503	33021118	VITE	SCREW	SCHRAUBE	VIS
0504	4-102726	SUPPORTO	SUPPORT	LAGER	SUPPORT
0505	439461	BOCCOLA	BUSHING	LAGER	DOUILLE
0506	4-102731	BOCCOLA	BUSHING	LAGER	DOUILLE
0507	35020979	PIGNONE	PINION	RITZEL	PIGNON
0508	4-102818	SK. ENCODER	ENCODER	CODIERER	ENCODER
0509	357405	ASTA	SHAFT	STANGE	BARRE
0510	457404	SUPPORTO	SUPPORT	LAGER	SUPPORT
0511	457130	FUNE	CABLE	SEIL	CABLE CABLE
0512	4-102888	MOLLA	SPRING	FEDER	RESSORT
0513	257481	PULEGGIA	PULLEY	REIMENSCHHEIBE	POULIE
0514	439488	TARGHETTA	DATA PLATE	TYPENSCHILD	PLAQUETTE
0515	249339	TERMINALE	TERMINAL	ENDVERSCHLUSS	COSSE
0516	450073	ANELLO	RING	RITZEL	PIGNON
0517	4-102903	MAGNETE	MAGNET	MAGNET	AIMANT
0518	4-102618	BRACCIO	ARM	ARM	BRAS



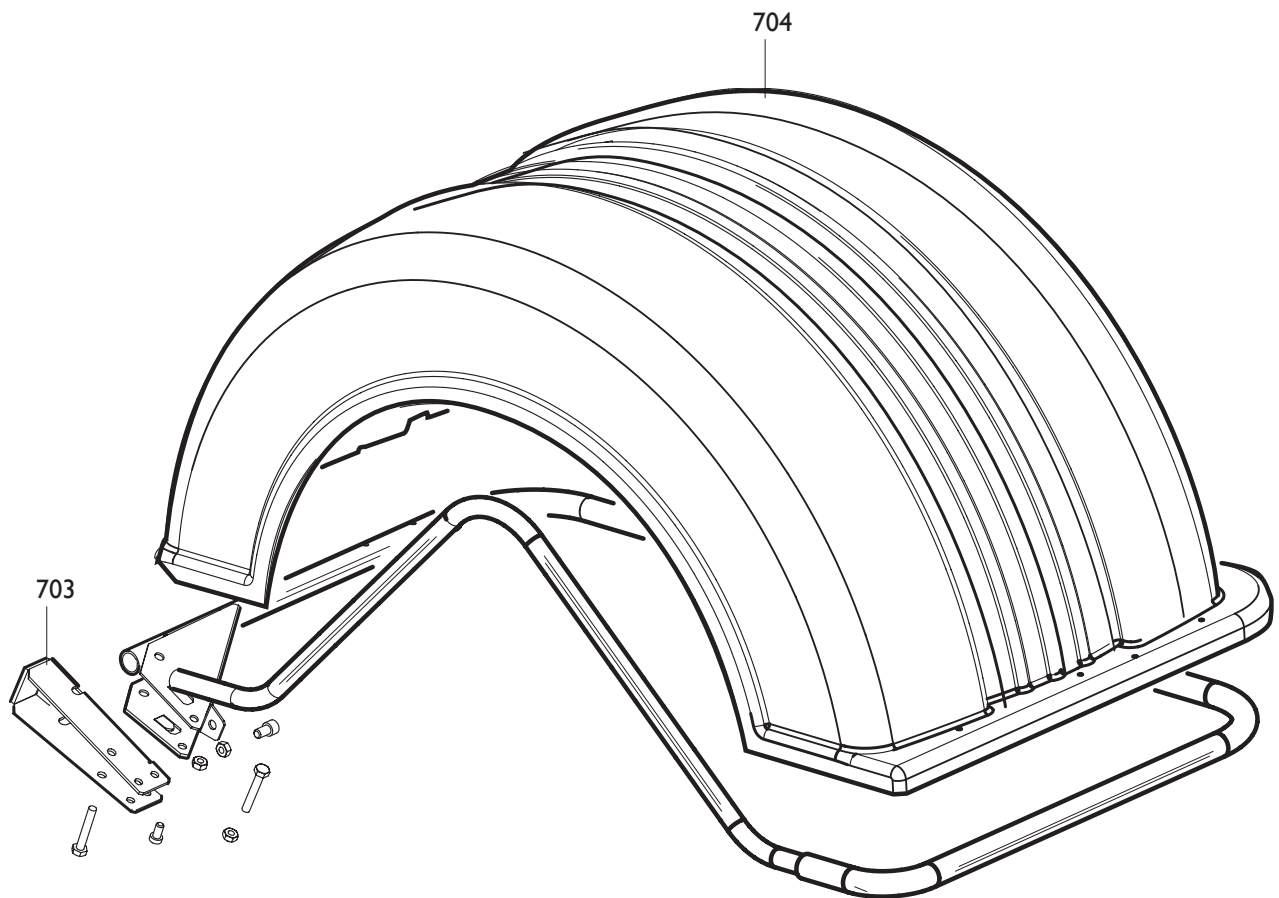
0101	457753	MICROINTERRUTT.	MICROSWITCH	MIKROSCHALTER	MICROINTERRUPT.
0601	433637	BOCCOLA	BUSHING	LAGER	DOUILLE
0602	413163	TASSELLO	BLOCK	EINSATZSTUECAK	TAMPON
0603	449270	MOLLA	SPRING	FEDER	RESSORT
0604	253453	FERMO	RETAINER	ANSCHLAG	ARRET



0606	4-102948	PROTEZIONE	SHIELD	ABDECKUNG	PROTECTION
0607	349272	TUBO	PIPE	ROHR	TUYAU
0608	449273	MOLLA	SPRING	FEDER	RESSORT



0101	457753	MICROINTERRUTT.	MICROSWITCH	MIKROSCHALTER	MICROINTERRUPT.
0601	433637	BOCCOLA	BUSHING	LAGER	DOUILLE
0603	449270	MOLLA	SPRING	FEDER	RESSORT
0701	260408	FERMO	RETAINER	ANSCHLAG	ARRET
0702	460798	TASSELLO	BLOCK	EINSATZSTUECK	TAMPON
0703	360359	SUPPORTO	SUPPORT	LAGER	SUPPORT



0703 360359
0704 460151

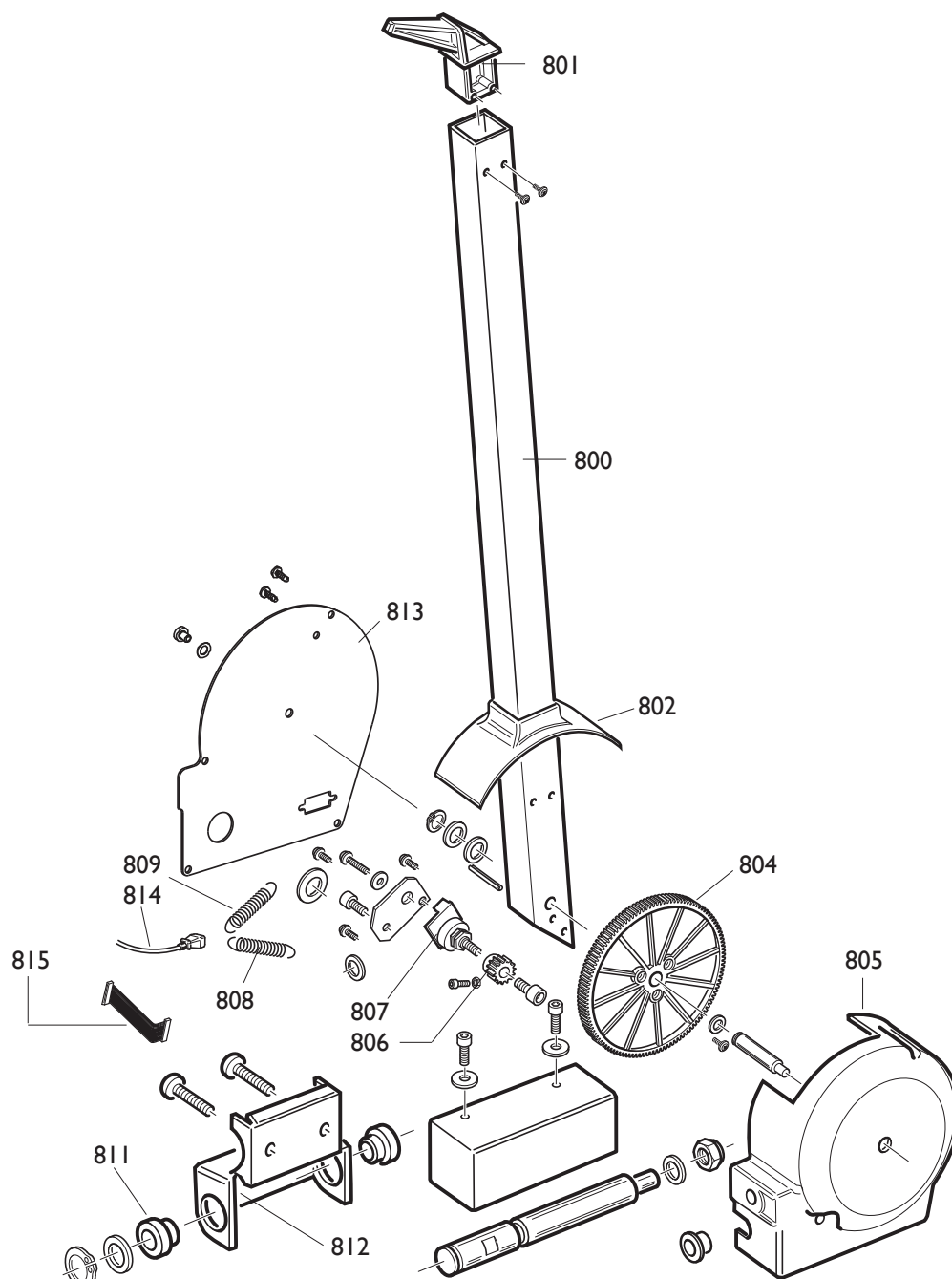
SUPPORTO
PROTEZIONE

SUPPORT
SHIELD

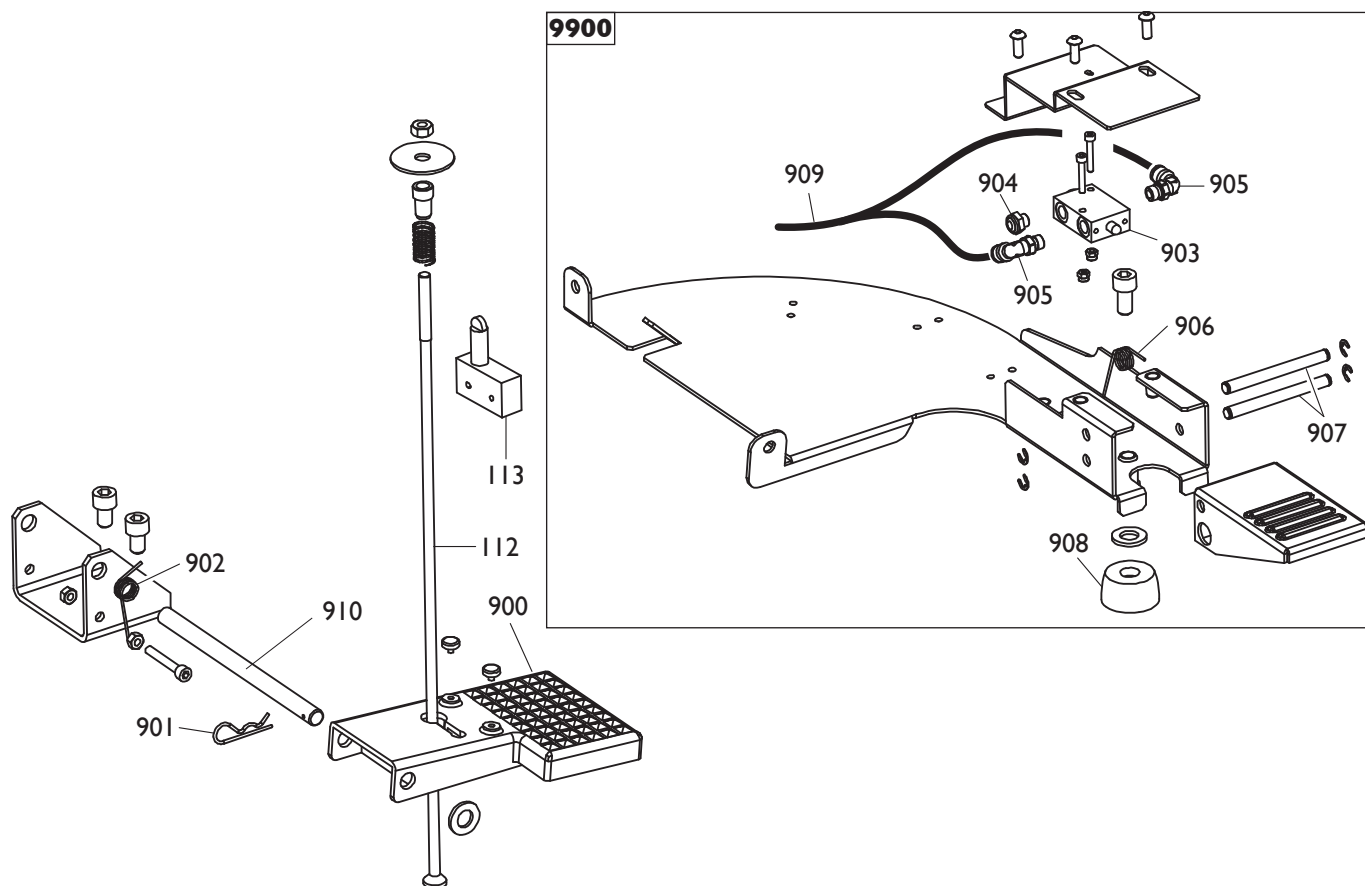
LAGER
ABDECKUNG

SUPPORT
PROTECTION

9801

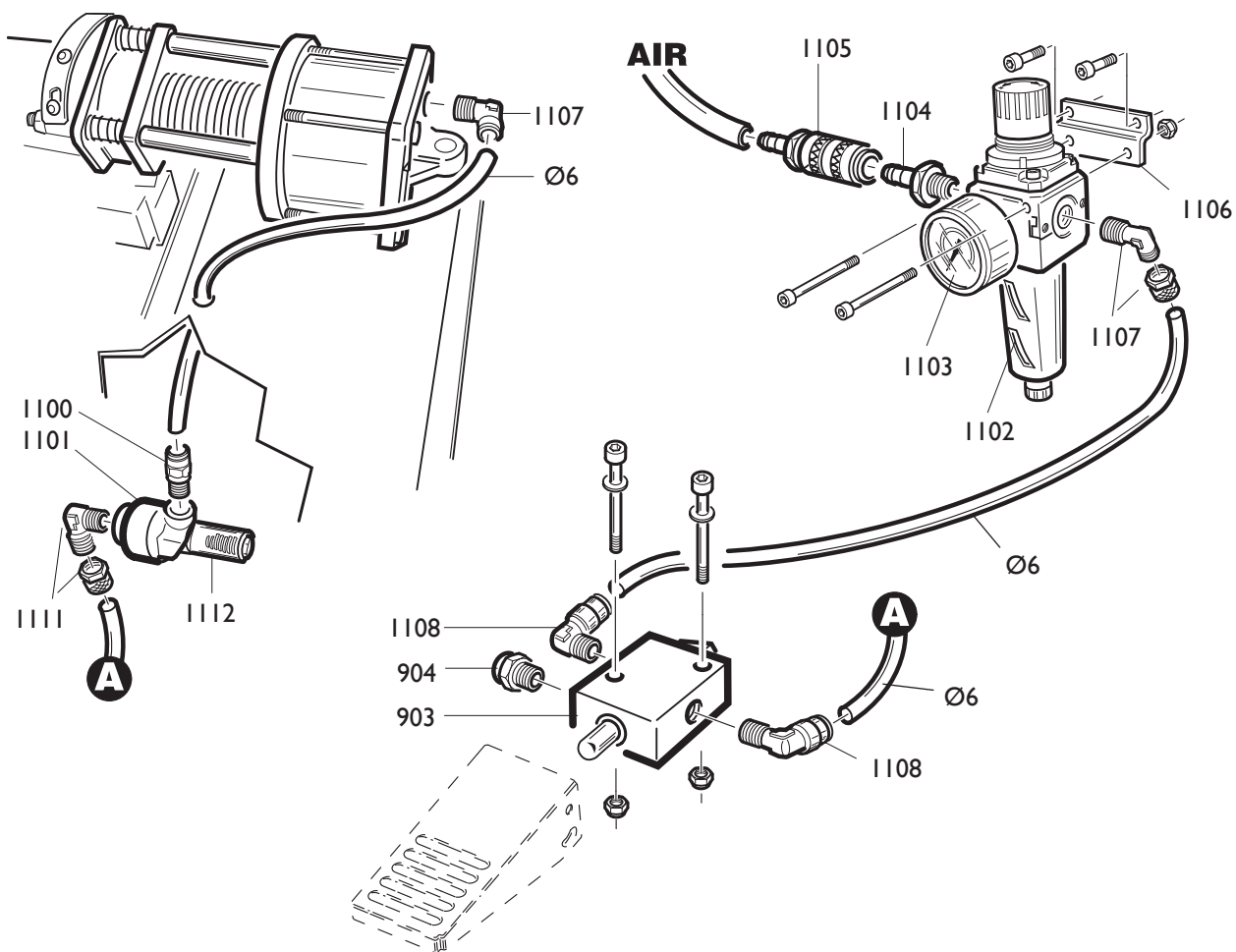


9801	802253426	RILEVATORE	SIGNAL TRACER	AUFNEHMER	MESUREUR
0800	353559	BRACCIO	ARM	ARM	BRAS
0801	453572	TASTATORE	FEELER PIN	FUEHLER	PALPEUR
0802	454458	PROTEZIONE	SHIELD	ABDECKUNG	PROTECTION
0804	453579	INGRANAGGIO	GEAR	ZAHNRADGETRIEBE	ENGRENAGE
0805	454457	CORPO	BODY	KOERPER	CORPS
0806	449326	PIGNONE	PINION	RITZEL	PIGNON
0807	5-101455	POTENZIOMETRO	POTENZIOMETER	POTENTIOMETER	POTENTIOMETRE
0808	455120	MOLLA	SPRING	FEDER	RESSORT
0809	454239	MOLLA	SPRING	FEDER	RESSORT
0811	460109	BOCCOLA	BUSHING	LAGER	DOUILLE
0812	353502	SUPPORTO 37"	SUPPORT 37"	LAGER 37"	SUPPORT 37"
0812	360940	SUPPORTO 44"	SUPPORT 44"	LAGER 44"	SUPPORT 44"
0813	4-106072	COPERCHIO	LID	DECKEL	COUVERCLE
0814	4-106012	CONN.VASCHETTA L.2000	FLAT CABLE	FLACHER KABEL	CABLE FLAT
0815	4-106036	CAVO FLAT L.100	FLAT CABLE	FLACHER FLAT	CABLE FLAT

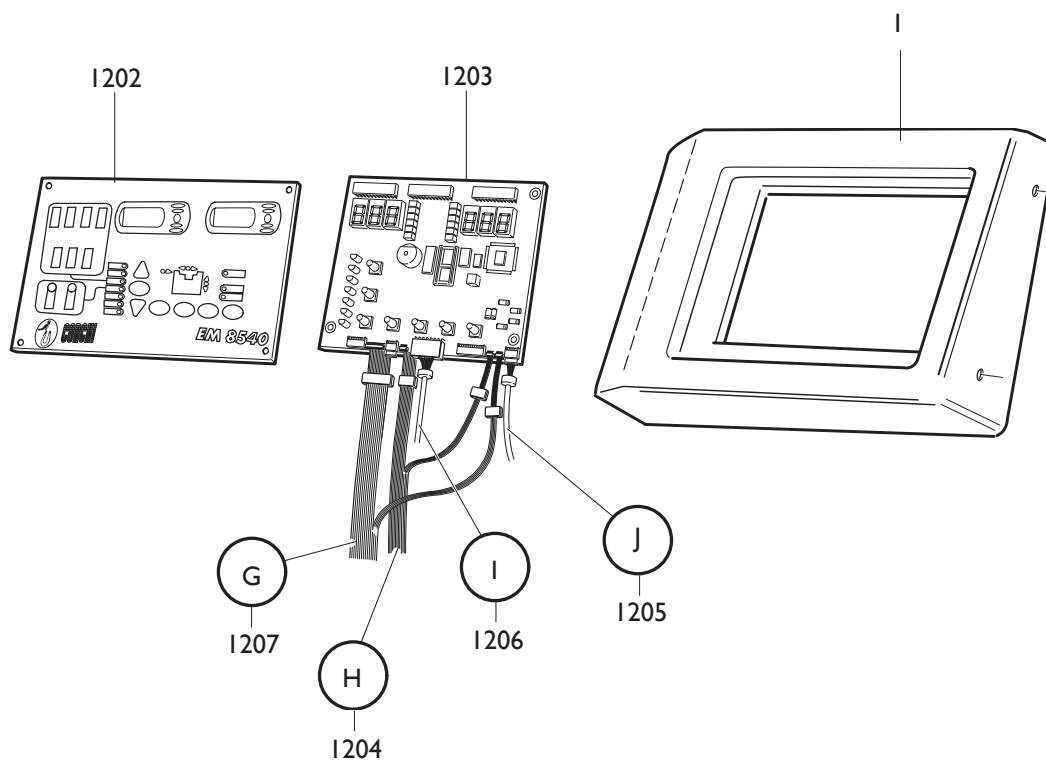


0112	453492	TIRANTE	STAY ROD	ZUGSTANGE	TIRANT
0113	4-104349	MICROINTERRUTTORE	MICROSWITCH	MIKROSCHALTER	MICROINTERRUPT.
0900	479233	PEDALE	PEDAL	PEDAL	PEDALE
0901	435055	MOLLA	SPRING	FEDER	RESSORT
0902	453495	MOLLA	SPRING	FEDER	RESSORT
0910	353508	PERNO	PIN		

9901	5-100341	PEDALE	PEDAL	PEDAL	PEDALE
0903	3-00365	VALVOLA	VALVE	VENTIL	VANNE
0904	3-00181	SILENZIATORE	SILENCER	SCHALLDAEMPFER	SILENCIEUX
0905	3-00217	RACCORDO	CONNECTOR	ANSCHLUSS	RACCORD
0906	437689	MOLLA	SPRING	FEDER	RESSORT
0907	337690	PERNO	PIN	ZAPFEN	PIVOT
0908	460029	PIEDE	FOOT	FUSS	PIED
0909	354534	TUBO	PIPE	ROHR	TUYAU



Ø6	1-04283	TUBO	PIPE	ROHR	TUYAU
1100	3-00460	RACCORDO	CONNECTOR	ANSCHLUSS	RACCORD
1101	3-00317	VALVOLA	VALVE	VENTIL	VANNE
1102	3-00341	FILTRO	FILTER	FILTER	FILTRE
1103	3-00488	MANOMETRO	PRESSUREG.	DRUCKMESSER	MANOMETRE
1104	3-00086	GIUNTO	COUPLING	KUPPLUNG	ACCOUPEMENT
1105	3-00257	GIUNTO	COUPLING	KUPPLUNG	ACCOUPEMENT
1106	333683	STAFFA	BRACKET	KLAUE	ETRIER
1107	3-00231	RACCORDO	CONNECTOR	ANSCHLUSS	RACCORD
1108	3-00219	RACCORDO	CONNECTOR	ANSCHLUSS	RACCORD
0903	3-00365	VALVOLA	VALVE	VENTIL	VANNE
0904	3-00181	SILENZIATORE	SILENCER	SCHALLDAEMPFER	SILENCIEUX
1111	246426	RACCORDO	CONNECTOR	ANSCHLUSS	RACCORD
1112	3-00182	SILENZIATORE	SILENCER	SCHALLDAEMPFER	SILENCIEUX



0001	460076	FRONTALE	FRONT PANEL	STIRNBAND	FRONTAL
1202	460097	TARGHETTA	DATA PLATE	TYPENSCHILD	PLAQUETTE
1203	4-105489	SCHEDA ELETTRON.	P.C. BOARD	ELEKTR. PLATINE	FICHE ELECTR.
1204	4-101848	CAVO (H)	CABLE (H)	KABEL (H)	CABLE (H)
1205	4-101846	CAVO (J)	CABLE (J)	KABEL (J)	CABLE (J)
1206	4-101845	CAVO (I)	CABLE (I)	KABEL (I)	CABLE (I)
1207	4-101847	CAVO (G)	CABLE (G)	KABEL (G)	CABLE (G)

.....

.....

.....

.....

.....

.....

.....

.....

.....

.....

.....

.....

.....

.....

.....

.....

.....

.....

.....

.....

.....

Il disegno è realizzato con tutti i particolari ma solo quelli codificati sono forniti come ricambi. L'Azienda si riserva la facoltà di apportare modifiche senza preavviso.



Via per Carpi, n°9 - 42015 Correggio (RE) ITALY
Tel. ++39 0522 639111 - Fax ++39 0522 639150
www.corgi.com - info@corgi.com

The drawing shows all parts but only the coded parts are supplied as spares. The Company reserves the right to make modifications without prior notice.

COMIM - Cod. 4-105225B - 1207