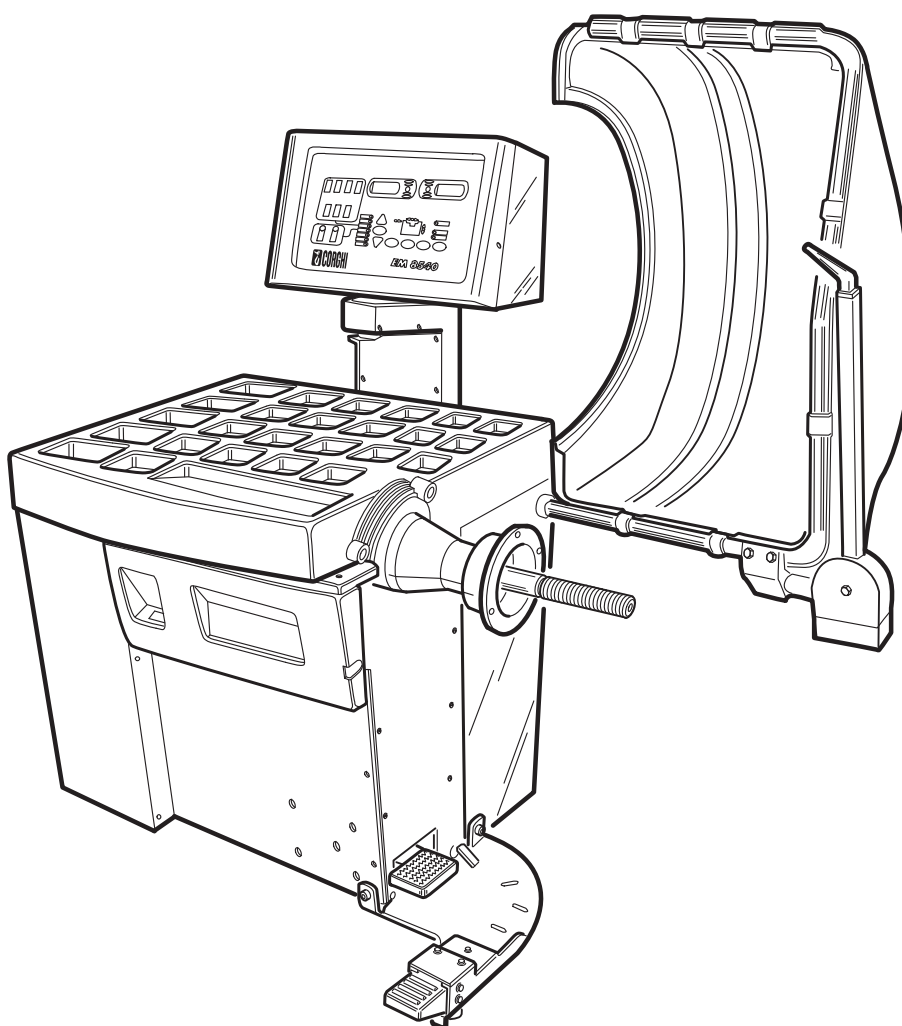


Questo libretto non autorizza l'utente ad intervenire sulle macchine ad esclusione di quanto esplicitamente descritto nel Manuale d'uso, ma consente all'utente di fornire informazioni precise all'Assistenza tecnica, al fine di ridurre i tempi di intervento.

EM8540 N.A. D40

The "Spare parts" booklet does not authorize the user to carry out work on the machine unless expressly specified in the instruction manual, but does enable him to provide accurate information to the assistance service in order to reduce downtime.

PEZZI DI RICAMBIO SPARE PARTS LIST ERSATZTEILLISTE PIECES DE RECHANGE



Code

4-I05225C

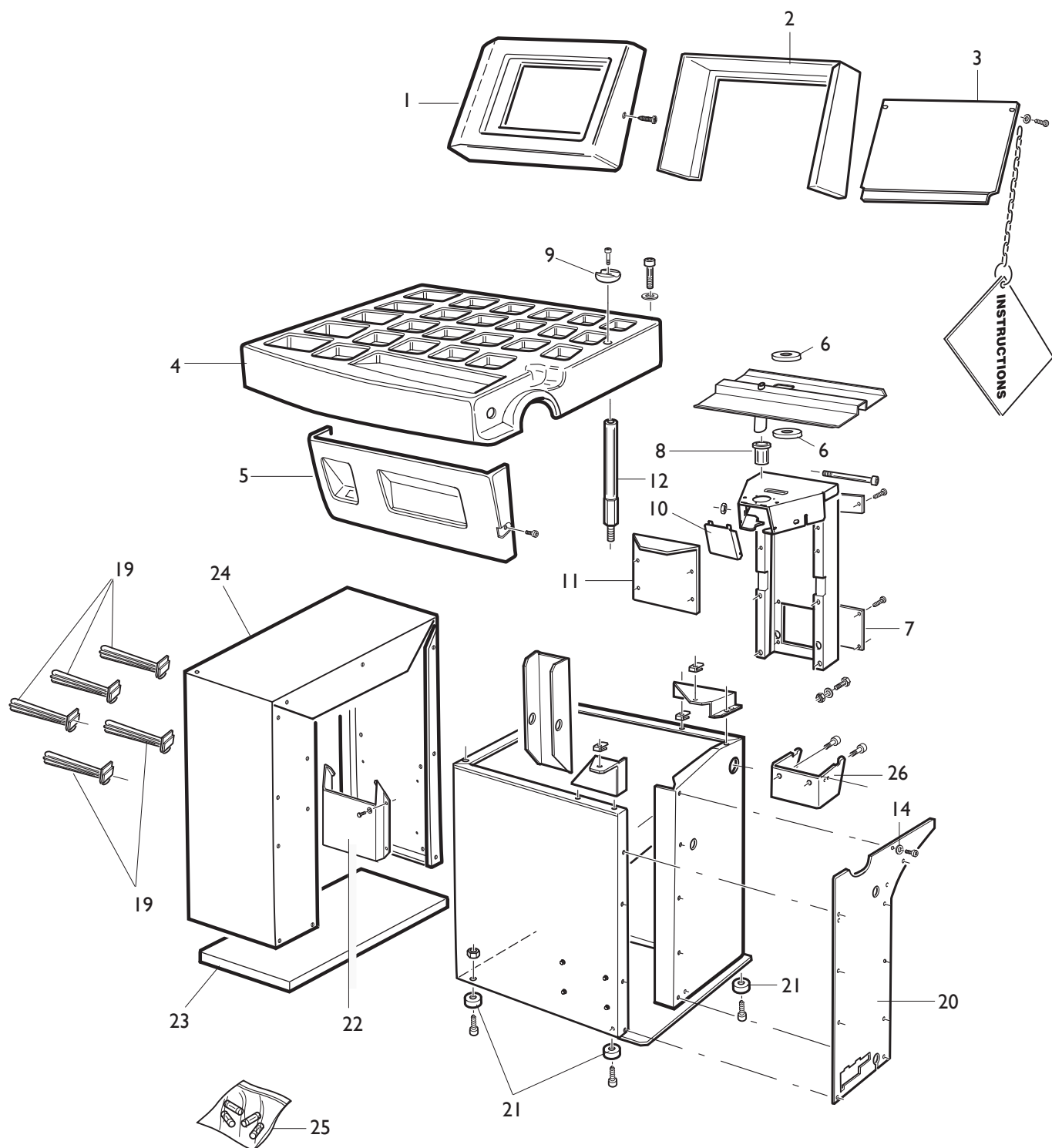
Production from

11 / 2008

Der Katalog Ersatzteile stellt keine Genehmigung zu eigenmächtigen Eingriffen dar (mit Ausnahme jener im Handbuch beschrieben), sondern er soll den Anwender in die Lage versetzen, dem technischen Service präzise Informationen zu liefern, um die Reparaturzeiten zu verkürzen.

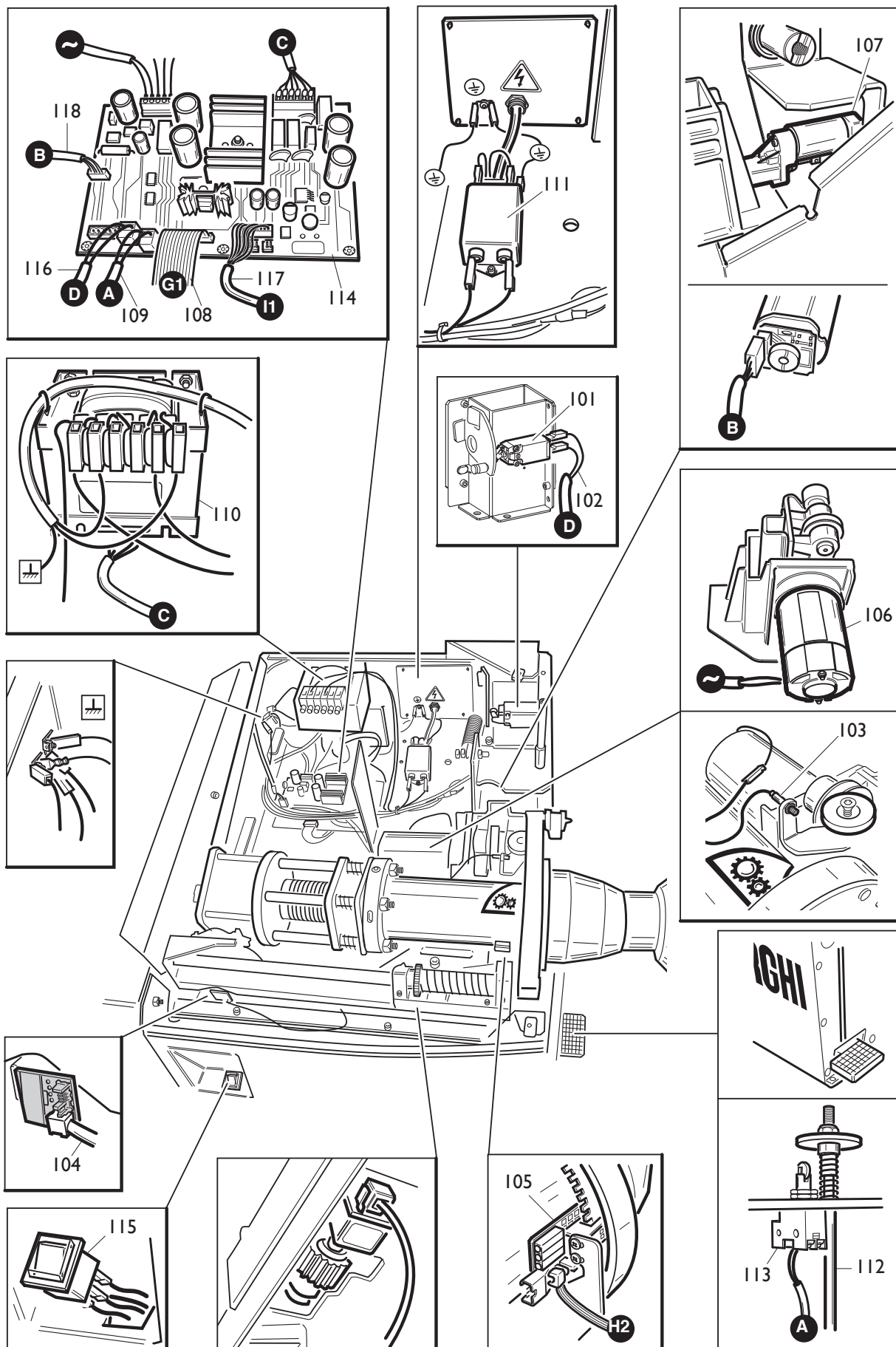



Le livret "Pièces de rechange", n'autorise pas l'utilisateur à intervenir sur les machines, sauf pour tout ce qui est clairement décrit dans le manuel d'utilisation, mais lui permet de fournir des informations précises à l'assistance technique, afin de diminuer les délais d'intervention.



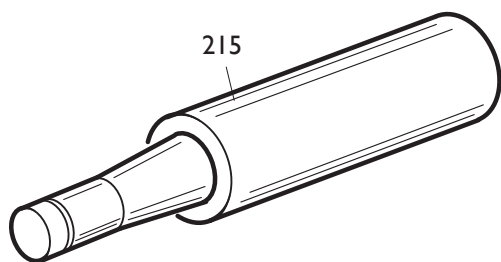
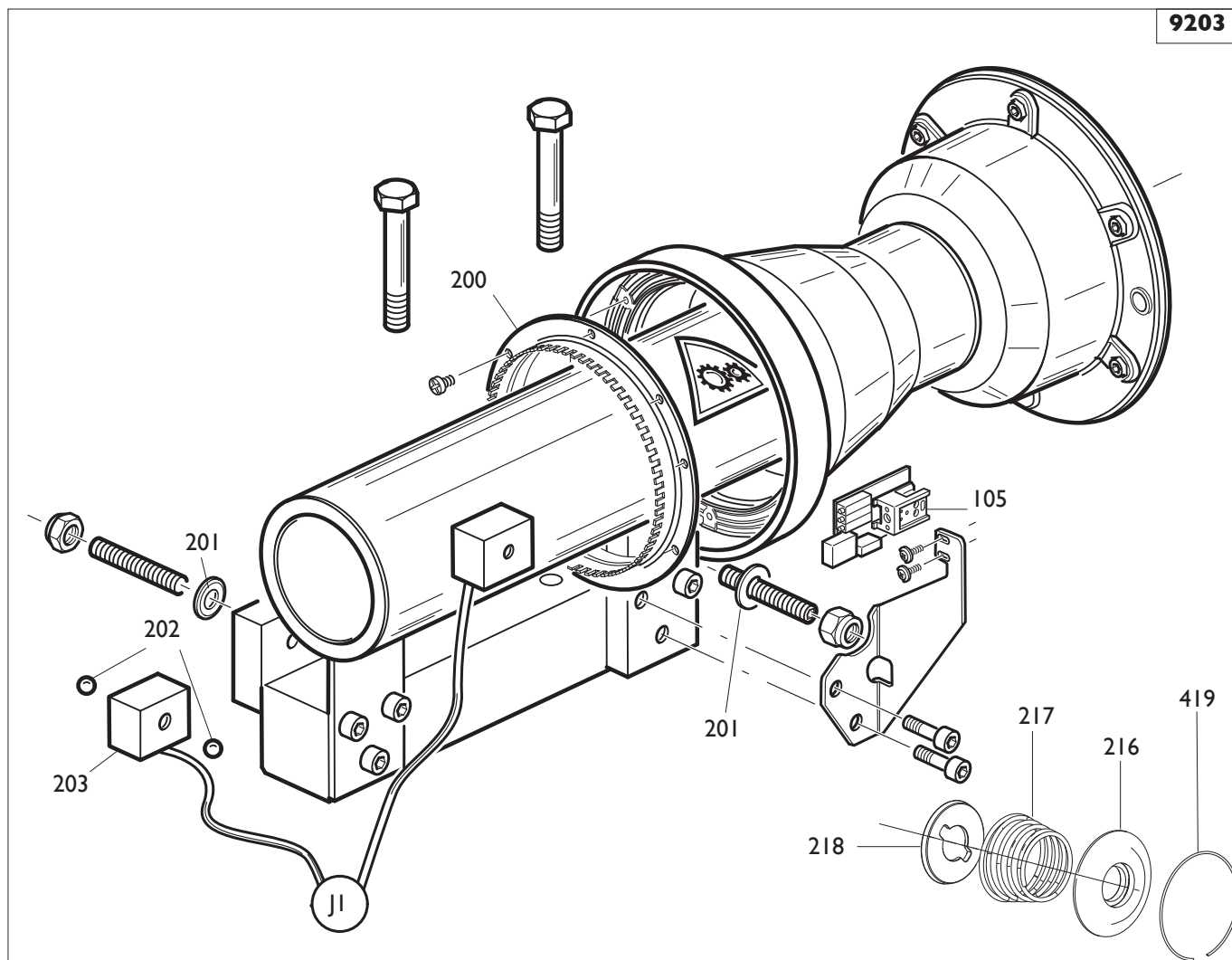
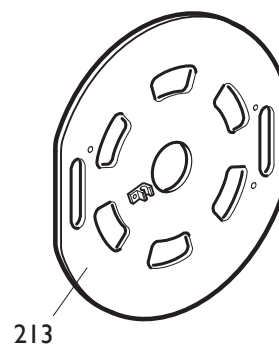
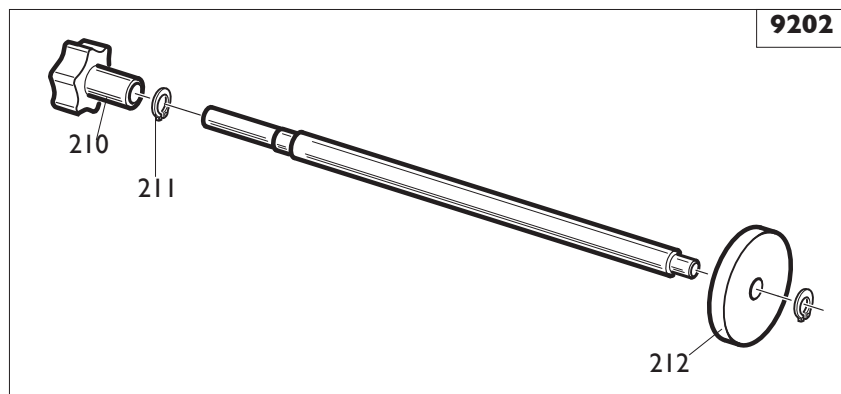
| | | | | |
|--|--------------------------|---------------|-----------------|--------------------------------------|
|  | EM8540 N.A. - D40 | Fig. A | 07A / 06 | Cassone + Testata + Portapesi |
|--|--------------------------|---------------|-----------------|--------------------------------------|

| | | | | | |
|------|-----------|-----------------|--------------------|--------------------|----------------|
| 0001 | 460076 | FRONTALE | FRONT PANEL | STIRNBAND | FRONTAL |
| 0002 | 360074/16 | COFANO rosso | HOOD red | HAUBE rot | COFFRE rouge |
| 0002 | 360074/25 | COFANO blu | HOOD blue | HAUBE blau | COFRE bleu |
| 0002 | 369974/39 | COFANO grigio | HOOD gray | HAUBE grau | COFRE gris |
| 0003 | 360075/16 | PANNELLO rosso | PANEL red | VERKLEIDUNG rot | PANNEAU rouge |
| 0003 | 360075/25 | PANNELLO blu | PANEL blue | VERKLEIDUNG blau | PANNEAU bleu |
| 0003 | 360075/39 | PANNELLO grigio | PANEL gray | VERKLEIDUNG grau | PANNEAU gris |
| 0004 | 4-102895 | COPERCHIO | LID | DECKEL | COUVERCLE |
| 0005 | 4-102926 | COFANO | HOOD | HAUBE | COFFRE |
| 0006 | 455540 | PASSACAVO | FAIRLEAD | KABELDURCHFUEHRUNG | PRESSE-ETOUPE |
| 0007 | 353984 | PANNELLO | PANEL | VERKLEIDUNG | PANNEAU |
| 0008 | 433663 | BOCCOLA | BUSHING | LAGER | DOUILLE |
| 0009 | 336581 | INCUDINE | ANVIL | AMBOSS | ENCLUME |
| 0010 | 360518/16 | PANNELLO rosso | PANEL red | VERKLEIDUNG rot | PANNEAU rouge |
| 0010 | 360518/25 | PANNELLO blu | PANEL blue | VERKLEIDUNG blau | PANNEAU bleu |
| 0010 | 360518/39 | PANNELLO grigio | PANEL gray | VERKLEIDUNG grau | PANNEAU gris |
| 0011 | 360069/16 | CARTER rosso | CASING red | GEHAUSE rot | CARTER rouge |
| 0011 | 360069/25 | CARTER blu | CASING blue | GEHAUSE blau | CARTER bleu |
| 0011 | 360069/39 | CARTER grigio | CASING gray | GEHAUSE grau | CARTER gris |
| 0012 | 4-102899 | SUPPORTO | SUPPORT | LAGER | SUPPORT |
| 0014 | 453504 | RONDELLA | WASHER | UNTERLEGSCHIEBE | RONDELLE |
| 0019 | 438319 | SUPPORTO | SUPPORT | LAGER | SUPPORT |
| 0020 | 4-101926 | COFANO | HOOD | HAUBE | COFFRE |
| 0021 | 360368 | PIEDE | FOOT | FUSS | PIED |
| 0022 | 355994 | CONENITORE | CONTAINER | BEHAELTER | CONTENEUR |
| 0023 | 360345/16 | RINFORZO rosso | REINFORCEMENT red | VERSTAERKUNG rot | RENFORT rouge |
| 0023 | 360345/25 | RINFORZO blu | REINFORCEMENT blue | VERSTAERKUNG blau | RENFORT bleu |
| 0023 | 360345/39 | RINFORZO grigio | REINFORCEMENT gray | VERSTAERKUNG grau | RENFORT gris |
| 0024 | 360047/16 | MOBILE rosso | CABINET red | SCHRANK rot | MEUBLE rouge |
| 0024 | 360047/25 | MOBILE blu | CABINET blue | SCHRANK blau | MEUBLE bleu |
| 0024 | 360047/39 | MOBILE grigio | CABINET gray | SCHRANK grau | MEUBLE gris |
| 0025 | 232942 | FUSIBILE 3,15 T | FUSE 3,15 T | SICHERUNG 3,15 T | FUSIBLE 3,15 T |
| 0025 | 229690 | FUSIBILE 0,5A | FUSE 0,5A | SICHERUNG 0,5A | FUSIBLE 0,5A |
| 0025 | 236665 | FUSIBILE 5A T | FUSE 5A T | SICHERUNG 5A T | FUSIBLE 5A T |
| 0025 | 241582 | FUSIBILE 0,5A T | FUSE 0,5A T | SICHERUNG 0,5A T | FUSIBLE 0,5A T |
| 0025 | 5-100812 | SACCHETTO 3AT | BAG 3AT | | |
| 0025 | 5-100813 | SACCHETTO 8AF | BAG 8AF | | |
| 0025 | 5-100814 | SACCHETTO 20AT | BAG 20AT | | |
| 0026 | 4-100033 | STAFFA | BRACKET | KLAUE | ETRIER |



| | | | | |
|--|--------------------------|---------------|-----------------|---------------------------|
|  | EM8540 N.A. - D40 | Fig. B | 07A / 06 | Impianto elettrico |
|--|--------------------------|---------------|-----------------|---------------------------|

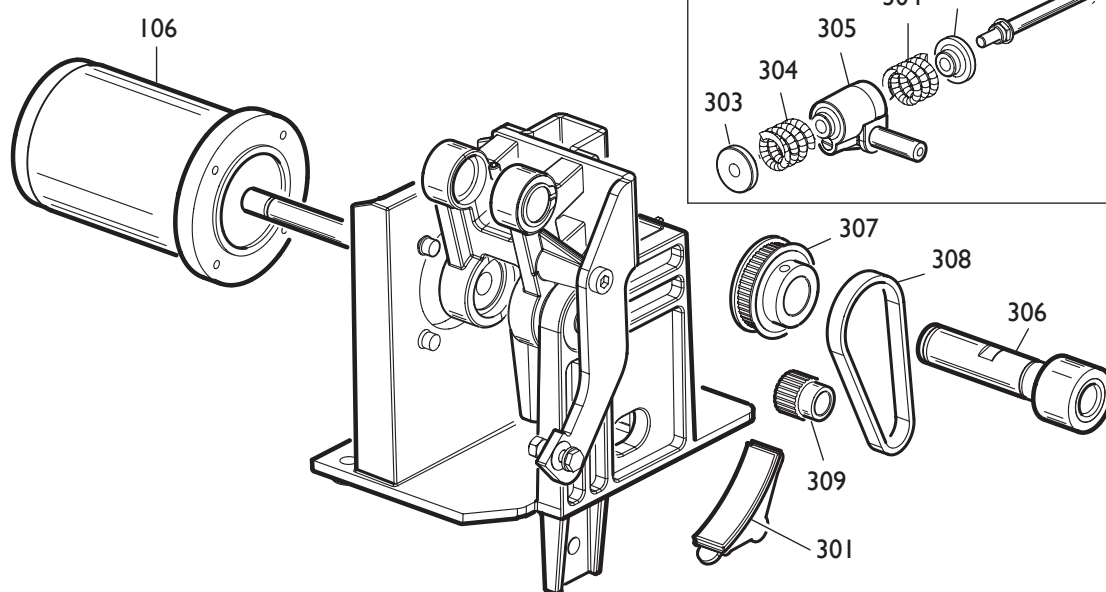
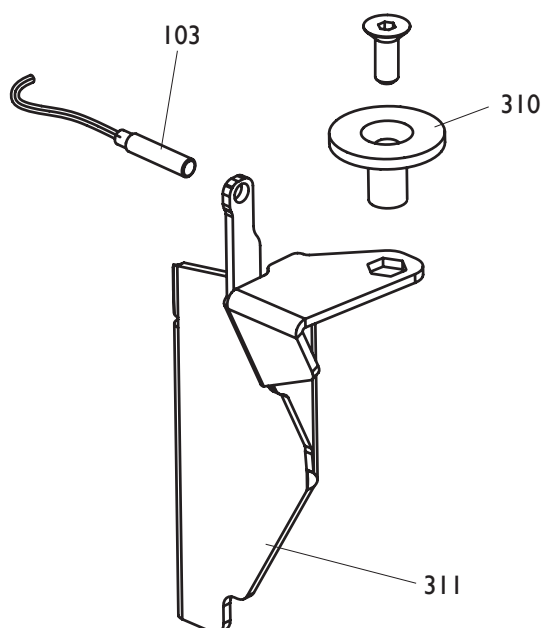
| | | | | | |
|------|----------|---------------------------|-------------|-------------------------|-----------------|
| 0101 | 457753 | MICROINTERRUTTORE | MICROSWITCH | MIKROSCHALTER | MICROINTERRUPT |
| 0102 | 241604 | CAVO | CABLE | KABEL | CABLE |
| 0103 | 4-102905 | SENSORE | SENSOR | SENSOR | CAPTEURS |
| 0104 | 4-101837 | CAVO | CABLE | KABEL | CABLE |
| 0105 | 249280 | SCHEDA ELETTRONICA | P.C. BOARD | ELEKTR. PLATINE | FICHE ELECTR. |
| 0106 | 4-101216 | MOTORE | MOTOR | MOTOR | MOTEUR |
| 0107 | 4-101223 | ATTUATORE | ACTUATOR | DREHTRIEB | ACTUATEUR |
| 0108 | 4-101838 | CAVO FLAT | FLAT CABLE | FLACHER KABEL | CABLE FLAT |
| 0109 | 4-101677 | CAVO | CABLE | KABEL | CABLE |
| 0110 | 4-102939 | TRASFORMATORE 100-115-230 | | TRANSFORMER 100-115-230 | |
| 0110 | 4-101700 | TRASFORMATORE 115-208-230 | | TRANSFORMER 115-208-230 | |
| 0111 | 3-01530 | FILTRO | FILTER | FILTER | FILTRE |
| 0112 | 453492 | TIRANTE | STAY ROD | ZUGSTANGE | TIRANT |
| 0113 | 4-104349 | MICROINTERRUTTORE | MICROSWITCH | MIKROSCHALTER | MICROINTERRUPT. |
| 0114 | 4-103608 | SCHEDA ELETTRONICA | P.C. BOARD | ELEKTR. PLATINE | FICHE ELECTR. |
| 0115 | 433848 | INTERRUTTORE | SWITCH | SCHALTER | INTERRUPTEUR |
| 0116 | 4-101674 | CAVO | CABLE | KABEL | CABLE |
| 0117 | 4-103199 | CAVO | CABLE | KABEL | CABLE |
| 0118 | 4-101759 | CAVO | CABLE | KABEL | CABLE |

9203

9202


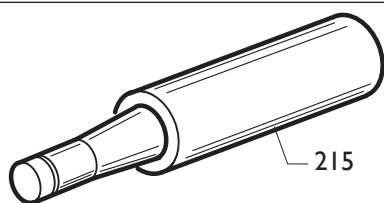
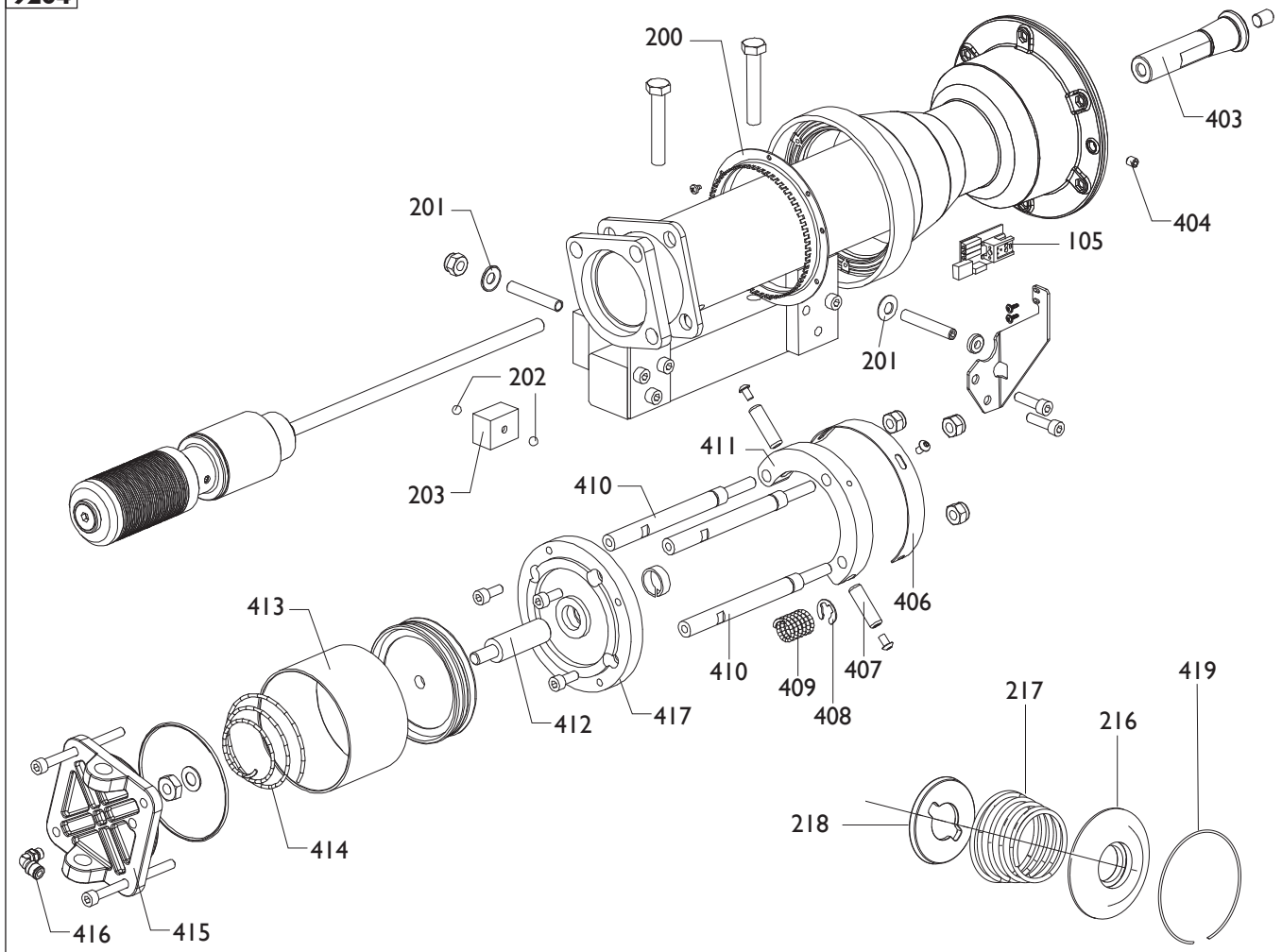
| | | | | |
|--|--------------------------|---------------|----------------|--------------------------|
|  | EM8540 N.A. - D40 | Fig. C | 11 / 08 | Gruppo oscillante |
|--|--------------------------|---------------|----------------|--------------------------|

| 9203 | 5-100971 | GRUPPO | ASSEMBLY | GRUPPE | GROUPE |
|-------------|-----------------|---------------------|-----------------|-----------------|---------------|
| 0200 | 449310 | DISCO | DISK | SCHEIBE | DISQUE |
| 0105 | 249280 | SK ELETTRONICA | P.C. BOARD | ELEKTR. PLATINE | FICHE ELECTR. |
| 0201 | 424993 | MOLLA | SPRING | FEDER | RESSORT |
| 0202 | 2-00243 | SFERA | BALL | KUGEL | BILLE |
| 0203 | 243591 | PICK-UP | PICK-UP | PICK-UP | PICK-UP |
| 0419 | 4-101740 | ANELLO | RING | RING | ANNEAU |
| 0216 | 4-104590 | DISCO PR.MOLLA D.40 | DISK | SCHEIBE | DISQUE |
| 0217 | 4-107939 | MOLLA | SPRING | FEDER | RESSORT |
| 0218 | 4-107906 | ANELLO C.MOLLA D.40 | SPACER | ABSTANDSSTUECK | ENTRETOISE |

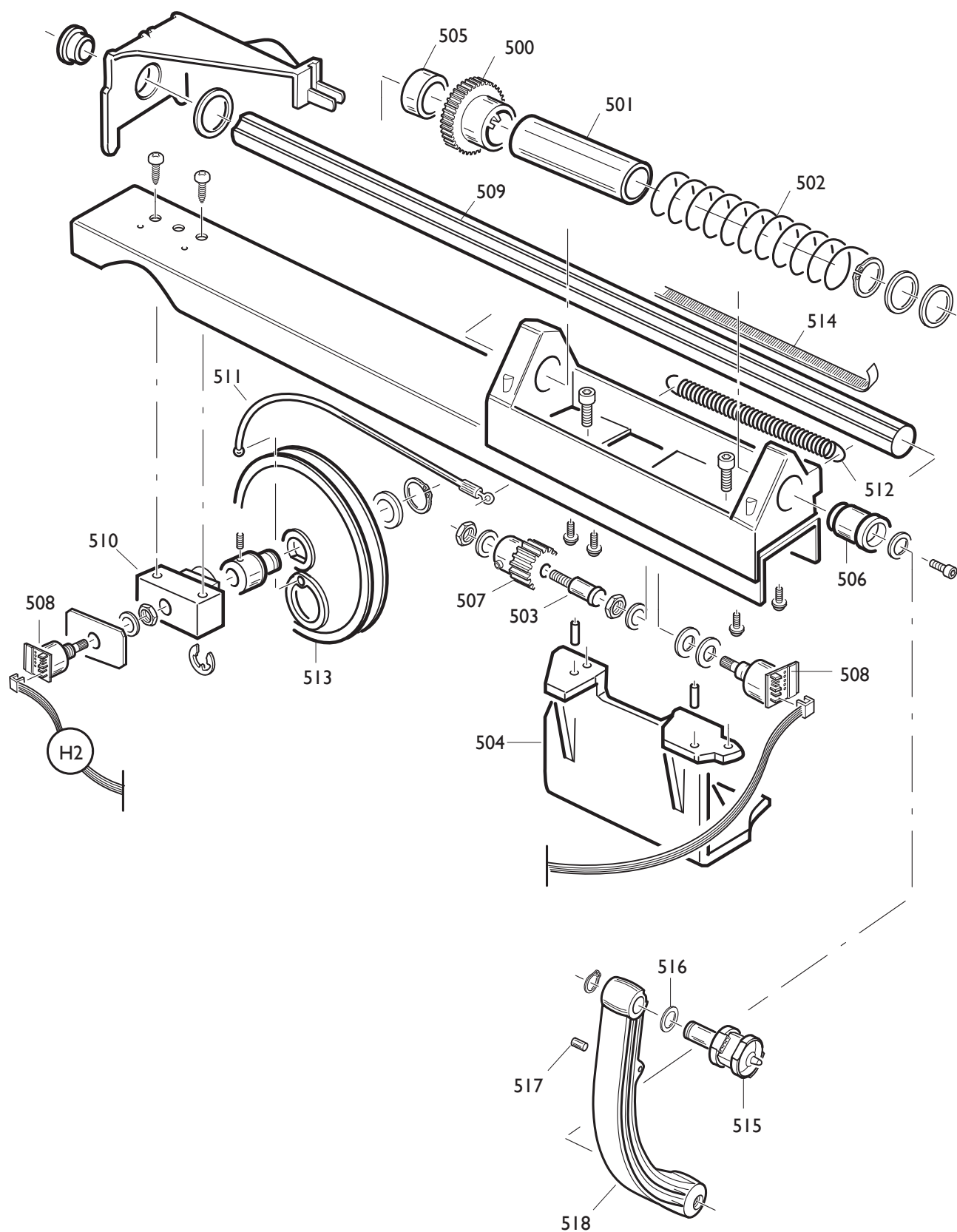
| 9202 | 259719 | CONTRAPPESO | COUNTERWEIGHT | GEGENGEWICHT | CONTREPOIDS |
|-------------|---------------|--------------------|----------------------|---------------------|--------------------|
| 0210 | 459932 | MANOPOLA | KNOB | BALLENGRIFF | BOUTON |
| 0211 | 2-00021 | ANELLO | RING | RING | ANNEAU |
| 0212 | 2-02040 | ANELLO | RING | RING | ANNEAU |
| 0213 | 5-100026 | DISCO | DISK | SCHEIBE | DISQUE |
| 0215 | 5-101514 | MOZZO | HUB | NABE | MOYEU |

9302

9301


| | | | | | |
|-------------|-----------------|------------------|-----------------|------------------|------------------|
| 9302 | 5-100405 | GRUPPO | ASSEMBLY | GRUPPE | GROUPE |
| 0106 | 4-101216 | MOTORE | MOTOR | MOTOR | MOTEUR |
| 0301 | 4-102639 | PATTINO | PAD | GLEITSTCHUH | PATIN |
| 9301 | 5-100411 | ATTUATORE | ACTUATOR | DREHTRIEB | ACTUATEUR |
| 0107 | 4-101223 | ATTUATORE | ACTUATOR | DREHTRIEB | ACTUATEUR |
| 0303 | 4-101224 | BOCCOLA | BUSHING | LAGER | DOUILLE |
| 0304 | 4-101226 | MOLLA | SPRING | FEDER | RESSORT |
| 0305 | 4-101225 | BLOCCHETTO | BLOCK | BLOCK | BLOC |
| 0306 | 4-101220 | RULLO | ROLLER | WALZE | ROULEAU |
| 0307 | 4-101214 | PULEGGIA | PULLEY | RIEMENSCHIEBE | POULIE |
| 0308 | 3-01328 | CINGHIA | BELT | RIEMEN | COURROIE |
| 0309 | 4-101213 | PULEGGIA | PULLEY | RIEMENSCHIEBE | POULIE |
| 0310 | 4-103760 | DISCO | DISK | SCHEIBE | DISQUE |
| 0311 | 4-103767 | STAFFA | BRACKET | KLAUE | ETRIER |
| 0103 | 4-102905 | SENSORE | SENSOR | SENSOR | CAPTEURS |

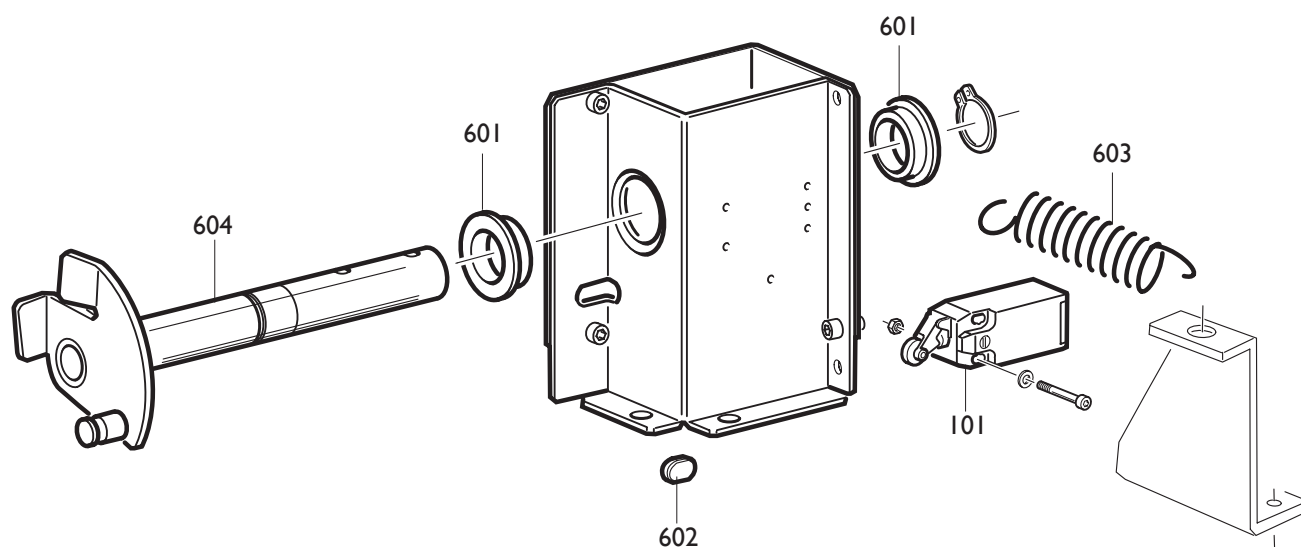
9204


| 9204 | 5-100940 | GRUPPO | ASSEMBLY | GRUPPE | GROUPE |
|-------------|-----------------|---------------------|-----------------|-----------------|---------------|
| 0200 | 449310 | DISCO | DISK | SCHEIBE | DISQUE |
| 0201 | 424993 | MOLLA | SPRING | FEDER | RESSORT |
| 0202 | 2-00243 | SFERA | BALL | KUGEL | BILLE |
| 0203 | 243591 | PICK-UP | PICK-UP | PICK-UP | PICK-UP |
| 0105 | 249280 | SK ELETTRONICA | P.C. BOARD | ELEKTR. PLATINE | FICHE ELECTR. |
| 0403 | 4-101311 | BLOCCHETTO | BLOCK | BLOCK | BLOC |
| 0404 | 2-02682 | VITE | SCREW | SCHRAUBE | VIS |
| 0406 | 4-101646 | FASCE | BAND | BAND | BANDE |
| 0407 | 2-03233 | SPINA | PLUG | STECKER | FICHE |
| 0408 | 2-01015 | ANELLO | RING | RING | ANNEAU |
| 0409 | 4-101043 | MOLLA | SPRING | FEDER | RESSORT |
| 0410 | 4-100961 | PERNO | PIN | ZAPFEN | PIVOT |
| 0411 | 4-100960 | FLANGIA | FLANGE | FLANSCH | FLASQUE |
| 0412 | 363434 | STELO | STEM | SCHAFT | TIGE |
| 0413 | 338818 | CILINDRO | CYLINDER | ZYLINDER | CYLINDRE |
| 0414 | 463364 | MOLLA | SPRING | FEDER | RESSORT |
| 0415 | 357265 | FLANGIA | FLANGE | FLANSCH | FLASQUE |
| 0416 | 246439 | RACCORDO | CONNECTOR | ANSCHLUSS | RACCORD |
| 0417 | 4-100962 | FLANGIA | FLANGE | FLANSCH | FLASQUE |
| 0419 | 4-101740 | ANELLO | RING | RING | ANNEAU |
| 0216 | 4-104590 | DISCO PR.MOLLA D.40 | DISK | SCHEIBE | DISQUE |
| 0217 | 4-107939 | MOLLA | SPRING | FEDER | RESSORT |
| 0218 | 4-107906 | ANELLO C.MOLLA D.40 | SPACER | ABSTANDSSTUECK | ENTRETOISE |
| 0422 | 5-100949 | KIT GUARNIZIONI | SEALS KIT | DICHTUNGSATZ | KIT JOINTS |
| 0215 | 5-101514 | MOZZO | HUB | NABE | MOYEU |

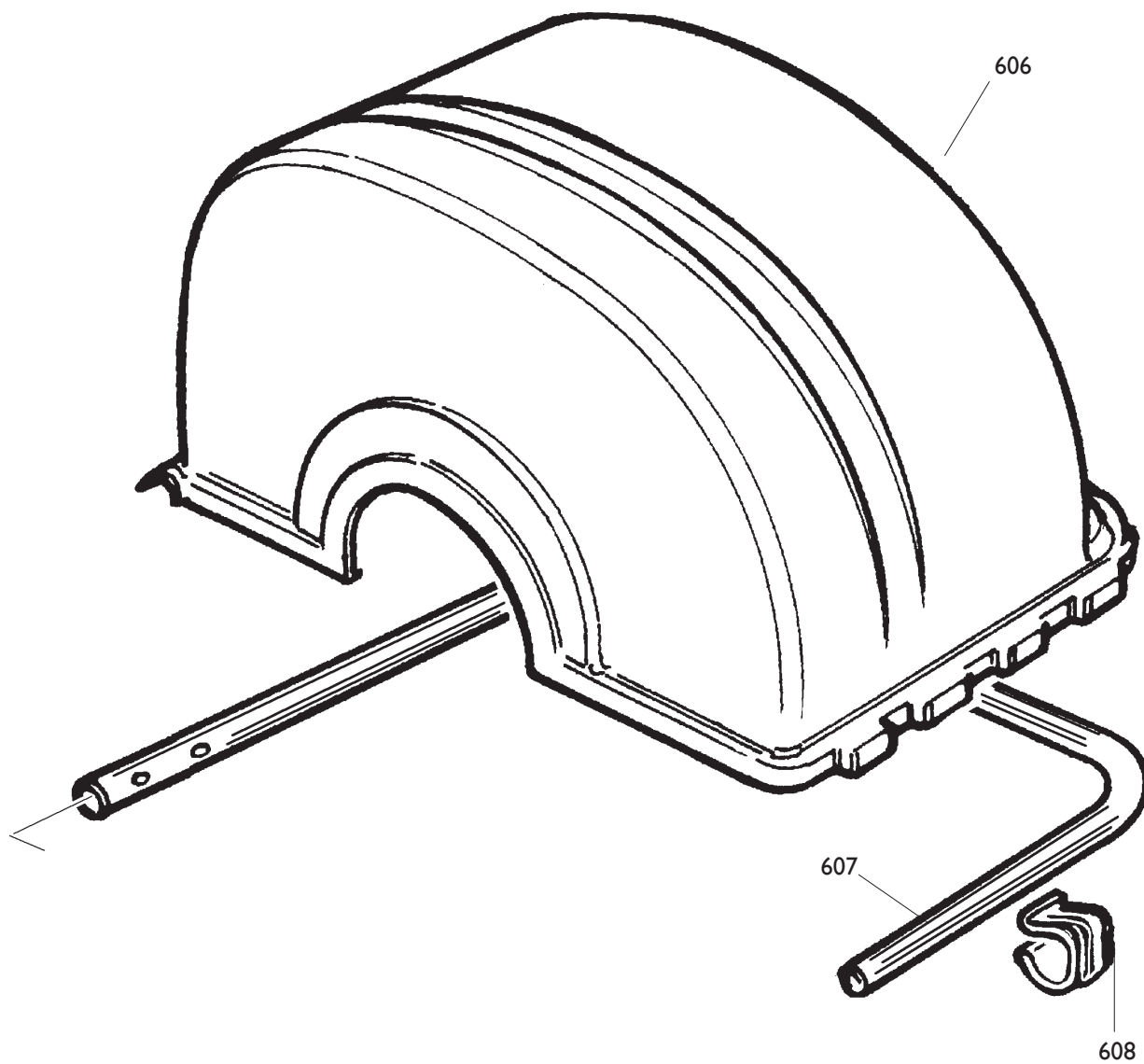


| | | | | |
|--|--------------------------|---------------|----------------|--------------------------|
|  | EM8540 N.A. - D40 | Fig. F | 07 / 06 | Gruppo rilevatore |
|--|--------------------------|---------------|----------------|--------------------------|

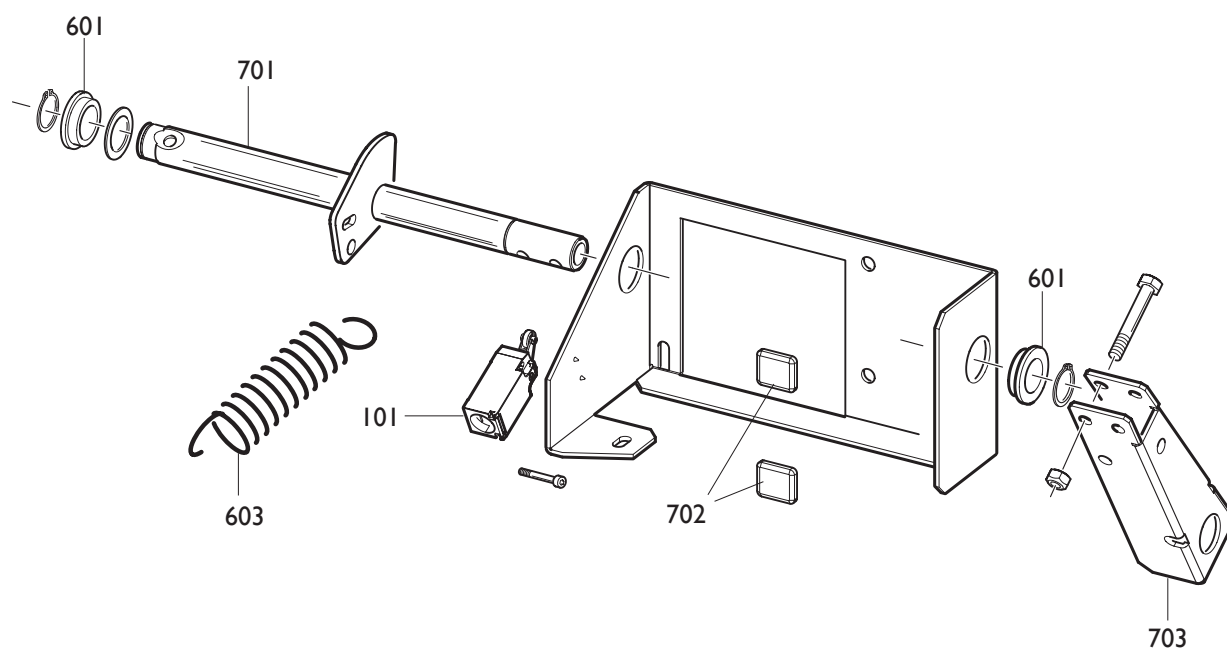
| | | | | | |
|------|----------|-------------|------------|-----------------|-------------|
| 0500 | 35024229 | INGRANAGGIO | GEAR | ZAHNRADGETRIEBE | ENGRENAGE |
| 0501 | 4-102889 | DISTANZIALE | SPACER | ABSTANDSSTUECK | ENTRETOISE |
| 0502 | 4-102886 | MOLLA | SPRING | FEDER | RESSORT |
| 0503 | 33021118 | VITE | SCREW | SCHRAUBE | VIS |
| 0504 | 4-102726 | SUPPORTO | SUPPORT | LAGER | SUPPORT |
| 0505 | 439461 | BOCCOLA | BUSHING | LAGER | DOUILLE |
| 0506 | 4-102731 | BOCCOLA | BUSHING | LAGER | DOUILLE |
| 0507 | 35020979 | PIGNONE | PINION | RITZEL | PIGNON |
| 0508 | 4-102818 | SK. ENCODER | ENCODER | CODIERER | ENCODER |
| 0509 | 357405 | ASTA | SHAFT | STANGE | BARRE |
| 0510 | 457404 | SUPPORTO | SUPPORT | LAGER | SUPPORT |
| 0511 | 457130 | FUNE | CABLE | SEIL | CABLE CABLE |
| 0512 | 4-102888 | MOLLA | SPRING | FEDER | RESSORT |
| 0513 | 257481 | PULEGGIA | PULLEY | REIMENSCHHEIBE | POULIE |
| 0514 | 439488 | TARGHETTA | DATA PLATE | TYPENSCHILD | PLAQUETTE |
| 0515 | 249339 | TERMINALE | TERMINAL | ENDVERSCHLUSS | COSSE |
| 0516 | 450073 | ANELLO | RING | RITZEL | PIGNON |
| 0517 | 4-102903 | MAGNETE | MAGNET | MAGNET | AIMANT |
| 0518 | 4-102618 | BRACCIO | ARM | ARM | BRAS |



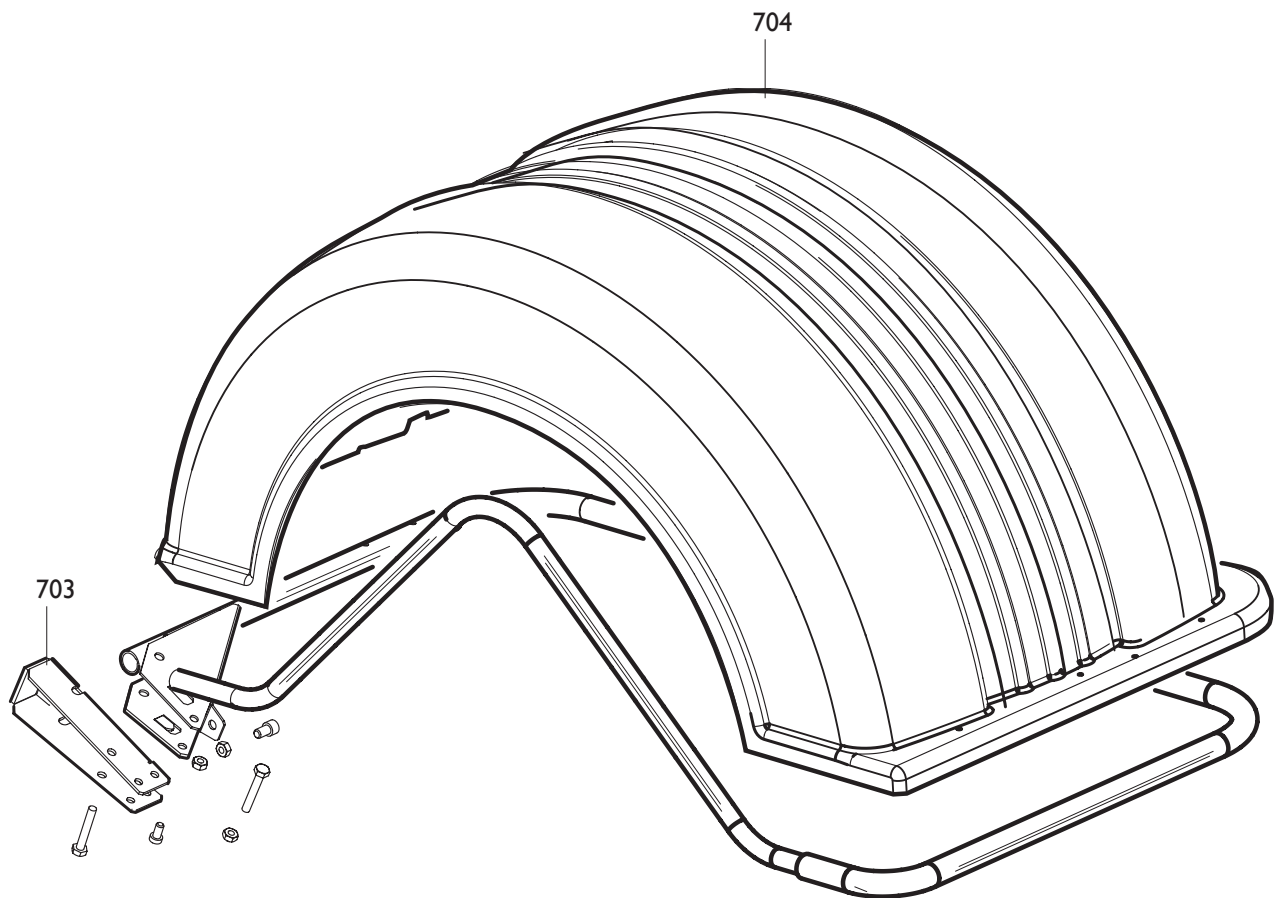
| | | | | | |
|------|--------|-----------------|-------------|----------------|-----------------|
| 0101 | 457753 | MICROINTERRUTT. | MICROSWITCH | MIKROSCHALTER | MICROINTERRUPT. |
| 0601 | 433637 | BOCCOLA | BUSHING | LAGER | DOUILLE |
| 0602 | 413163 | TASSELLO | BLOCK | EINSATZSTUECAK | TAMPON |
| 0603 | 449270 | MOLLA | SPRING | FEDER | RESSORT |
| 0604 | 253453 | FERMO | RETAINER | ANSCHLAG | ARRET |



| | | | | | |
|------|----------|------------|--------|-----------|------------|
| 0606 | 4-102948 | PROTEZIONE | SHIELD | ABDECKUNG | PROTECTION |
| 0607 | 349272 | TUBO | PIPE | ROHR | TUYAU |
| 0608 | 449273 | MOLLA | SPRING | FEDER | RESSORT |



| | | | | | |
|------|--------|-----------------|-------------|---------------|-----------------|
| 0101 | 457753 | MICROINTERRUTT. | MICROSWITCH | MIKROSCHALTER | MICROINTERRUPT. |
| 0601 | 433637 | BOCCOLA | BUSHING | LAGER | DOUILLE |
| 0603 | 449270 | MOLLA | SPRING | FEDER | RESSORT |
| 0701 | 260408 | FERMO | RETAINER | ANSCHLAG | ARRET |
| 0702 | 460798 | TASSELLO | BLOCK | EINSATZSTUECK | TAMPON |
| 0703 | 360359 | SUPPORTO | SUPPORT | LAGER | SUPPORT |



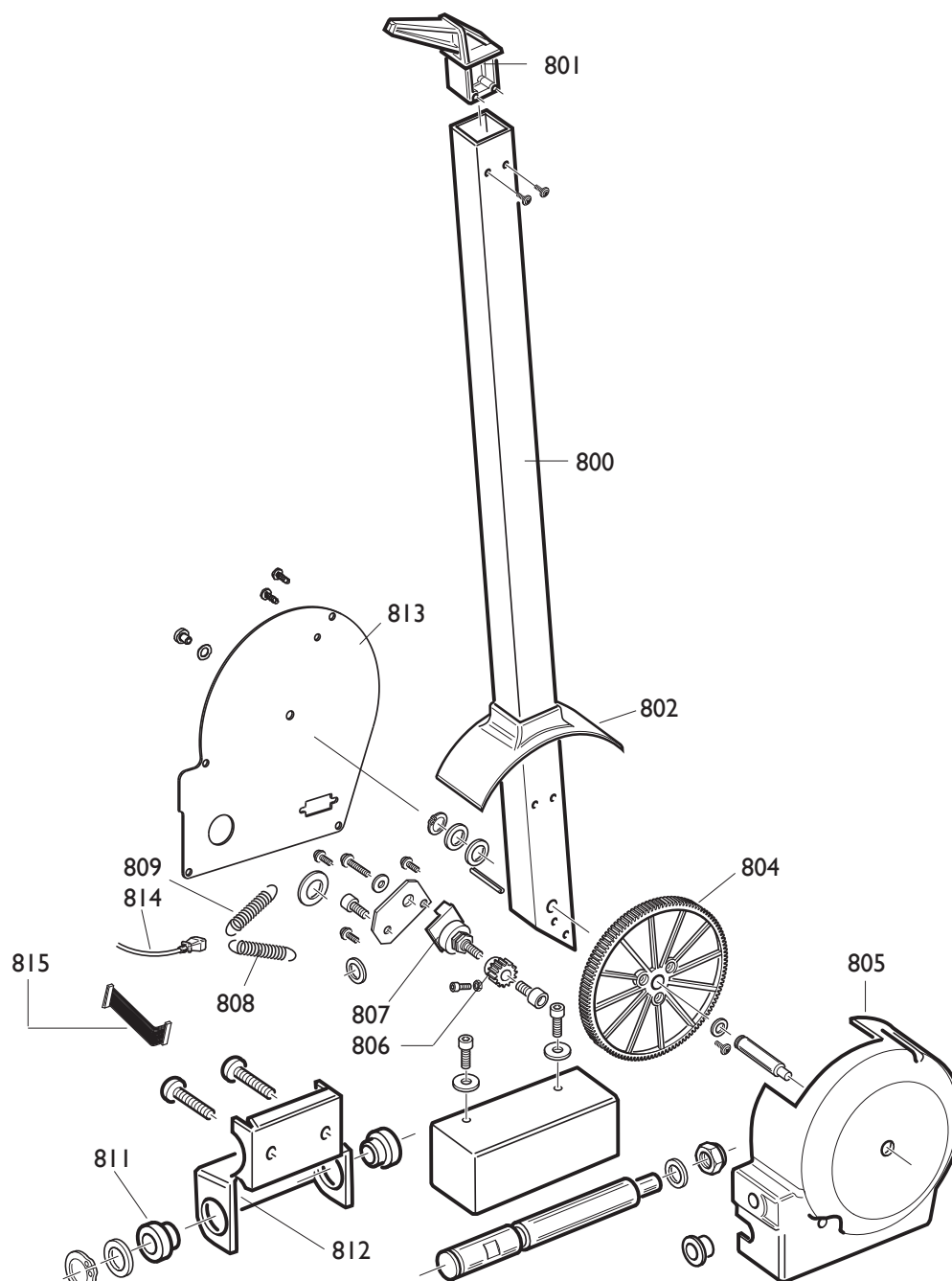
0703 360359
0704 460151

SUPPORTO
PROTEZIONE

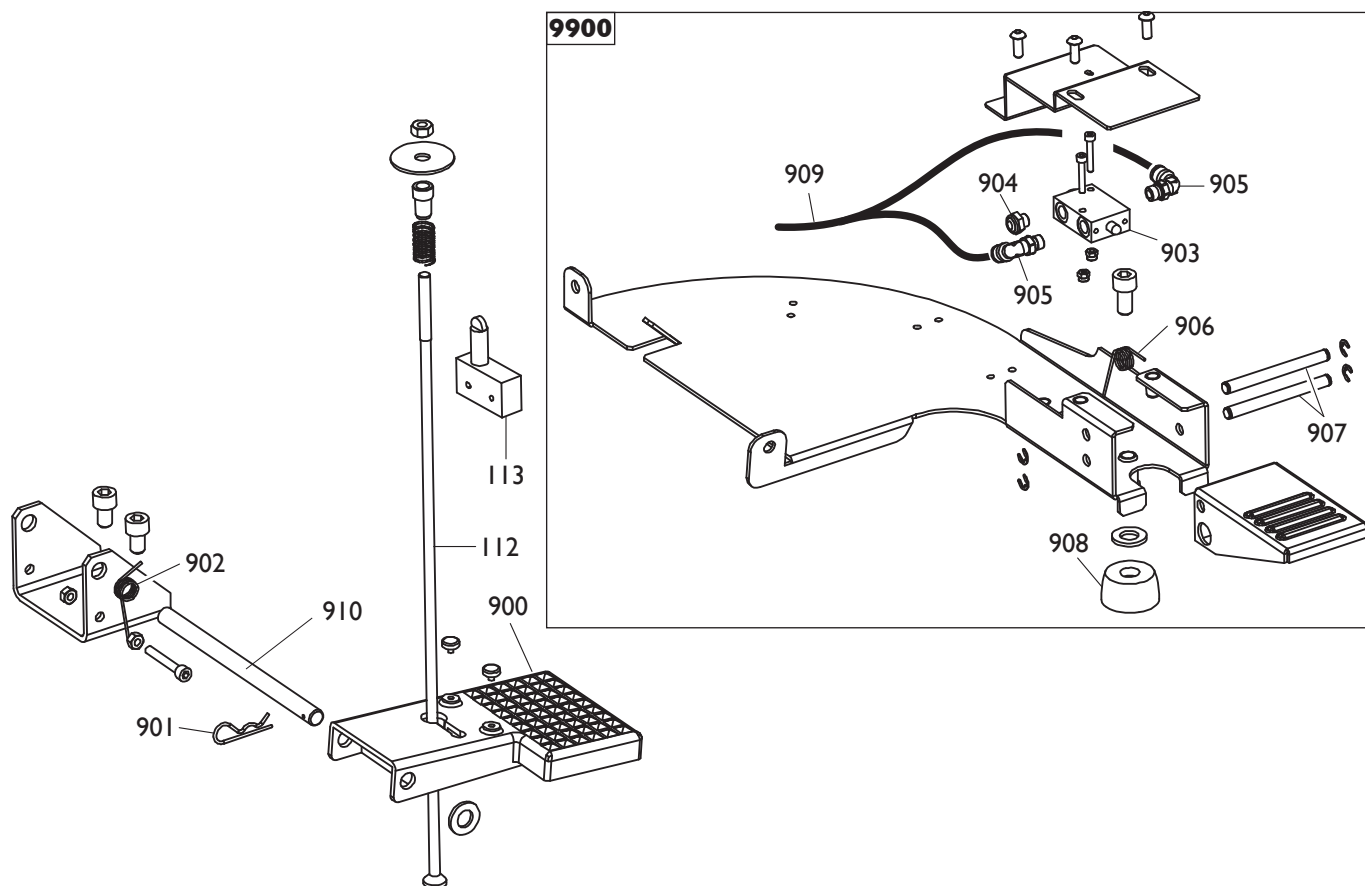
SUPPORT
SHIELD

LAGER
ABDECKUNG

SUPPORT
PROTECTION

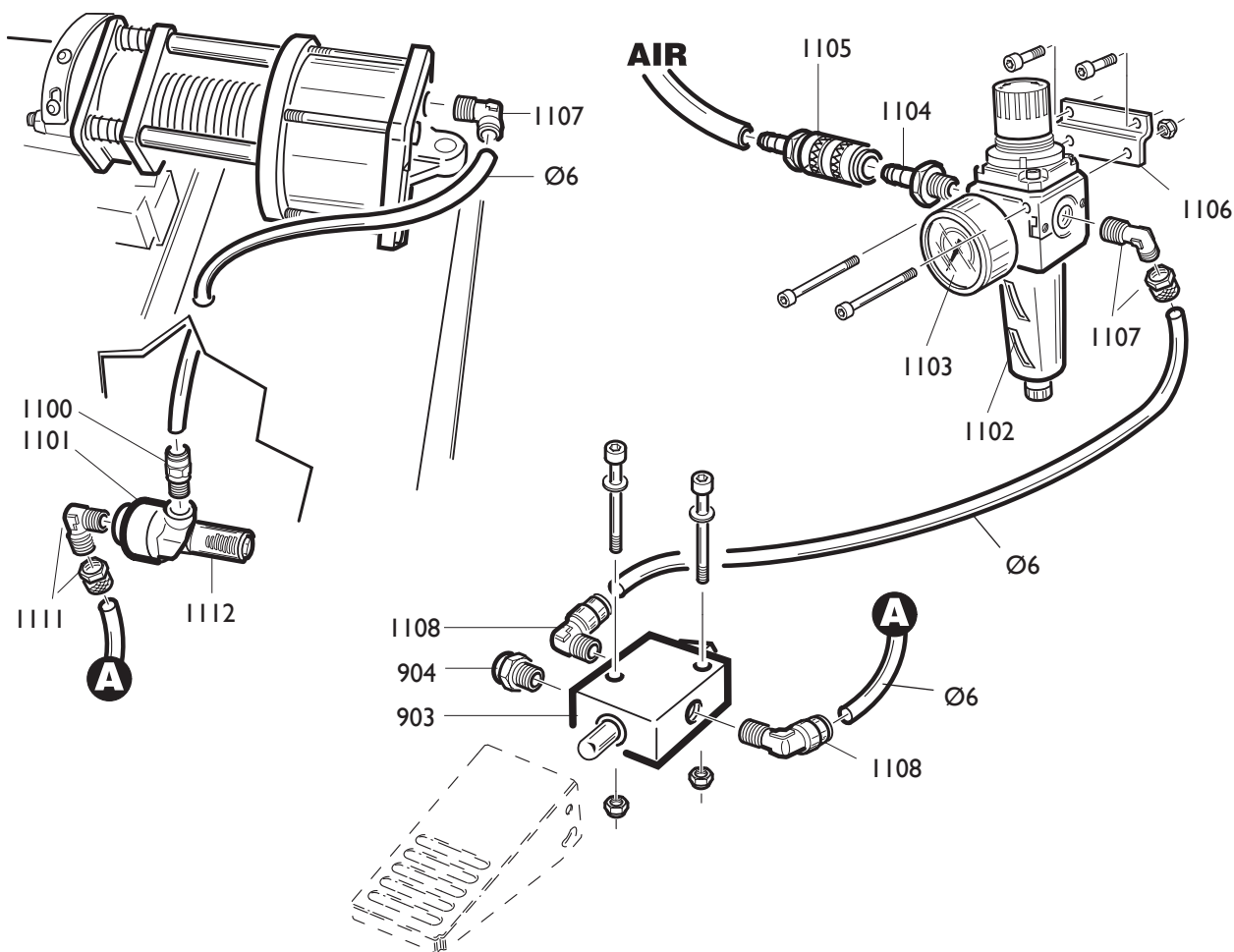
9801


| 9801 | 802253426 | RILEVATORE | SIGNAL TRACER | AUFNEHMER | MESUREUR |
|-------------|------------------|-----------------------|----------------------|------------------|-----------------|
| 0800 | 353559 | BRACCIO | ARM | ARM | BRAS |
| 0801 | 453572 | TASTATORE | FEELER PIN | FUEHLER | PALPEUR |
| 0802 | 454458 | PROTEZIONE | SHIELD | ABDECKUNG | PROTECTION |
| 0804 | 453579 | INGRANAGGIO | GEAR | ZAHNRADGETRIEBE | ENGRENAGE |
| 0805 | 454457 | CORPO | BODY | KOERPER | CORPS |
| 0806 | 449326 | PIGNONE | PINION | RITZEL | PIGNON |
| 0807 | 5-101455 | POTENZIOMETRO | POTENZIOMETER | POTENTIOMETER | POTENTIOMETRE |
| 0808 | 455120 | MOLLA | SPRING | FEDER | RESSORT |
| 0809 | 454239 | MOLLA | SPRING | FEDER | RESSORT |
| 0811 | 460109 | BOCCOLA | BUSHING | LAGER | DOUILLE |
| 0812 | 353502 | SUPPORTO 37" | SUPPORT 37" | LAGER 37" | SUPPORT 37" |
| 0812 | 360940 | SUPPORTO 44" | SUPPORT 44" | LAGER 44" | SUPPORT 44" |
| 0813 | 4-106072 | COPERCHIO | LID | DECKEL | COUVERCLE |
| 0814 | 4-106012 | CONN.VASCHETTA L.2000 | FLAT CABLE | FLACHER KABEL | CABLE FLAT |
| 0815 | 4-106036 | CAVO FLAT L.100 | FLAT CABLE | FLACHER FLAT | CABLE FLAT |

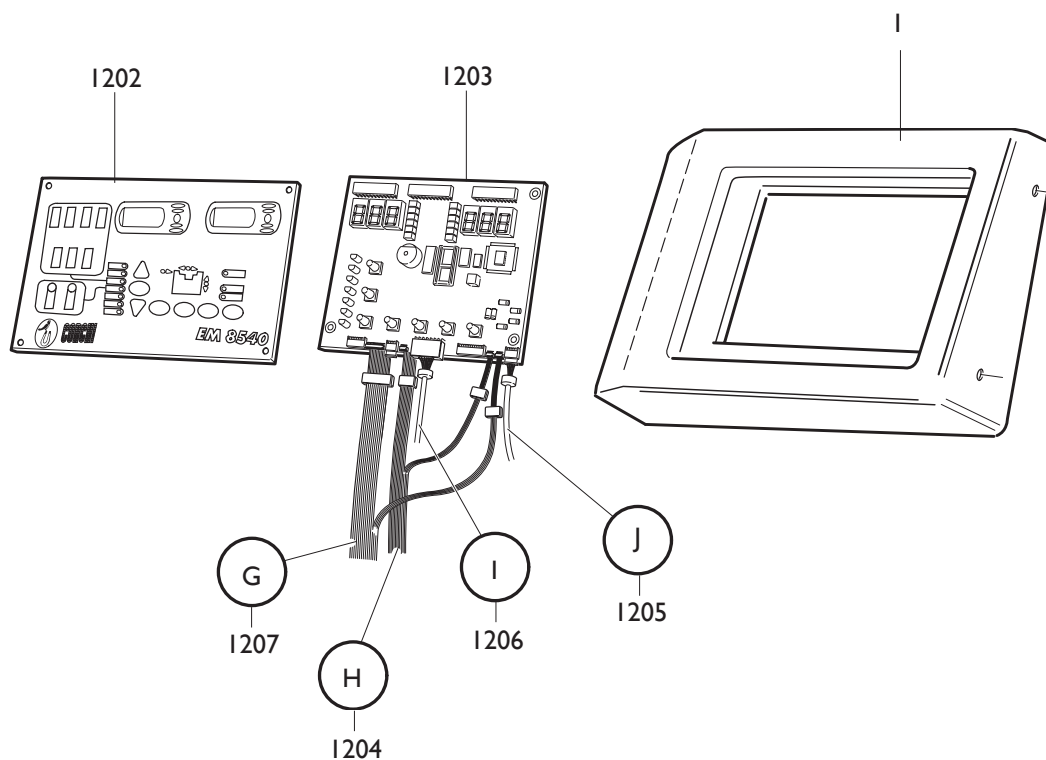


| | | | | | |
|------|----------|-------------------|-------------|---------------|-----------------|
| 0112 | 453492 | TIRANTE | STAY ROD | ZUGSTANGE | TIRANT |
| 0113 | 4-104349 | MICROINTERRUTTORE | MICROSWITCH | MIKROSCHALTER | MICROINTERRUPT. |
| 0900 | 479233 | PEDALE | PEDAL | PEDAL | PEDALE |
| 0901 | 435055 | MOLLA | SPRING | FEDER | RESSORT |
| 0902 | 453495 | MOLLA | SPRING | FEDER | RESSORT |
| 0910 | 353508 | PERNO | PIN | | |

| | | | | | |
|-------------|-----------------|---------------|--------------|----------------|---------------|
| 9901 | 5-100341 | PEDALE | PEDAL | PEDAL | PEDALE |
| 0903 | 3-00365 | VALVOLA | VALVE | VENTIL | VANNE |
| 0904 | 3-00181 | SILENZIATORE | SILENCER | SCHALLDAEMPFER | SILENCIEUX |
| 0905 | 3-00217 | RACCORDO | CONNECTOR | ANSCHLUSS | RACCORD |
| 0906 | 437689 | MOLLA | SPRING | FEDER | RESSORT |
| 0907 | 337690 | PERNO | PIN | ZAPFEN | PIVOT |
| 0908 | 460029 | PIEDE | FOOT | FUSS | PIED |
| 0909 | 354534 | TUBO | PIPE | ROHR | TUYAU |



| | | | | | |
|------|---------|--------------|------------|----------------|-------------|
| Ø6 | 1-04283 | TUBO | PIPE | ROHR | TUYAU |
| 1100 | 3-00460 | RACCORDO | CONNECTOR | ANSCHLUSS | RACCORD |
| 1101 | 3-00317 | VALVOLA | VALVE | VENTIL | VANNE |
| 1102 | 3-00341 | FILTRO | FILTER | FILTER | FILTRE |
| 1103 | 3-00488 | MANOMETRO | PRESSUREG. | DRUCKMESSER | MANOMETRE |
| 1104 | 3-00086 | GIUNTO | COUPLING | KUPPLUNG | ACCOUPEMENT |
| 1105 | 3-00257 | GIUNTO | COUPLING | KUPPLUNG | ACCOUPEMENT |
| 1106 | 333683 | STAFFA | BRACKET | KLAUE | ETRIER |
| 1107 | 3-00231 | RACCORDO | CONNECTOR | ANSCHLUSS | RACCORD |
| 1108 | 3-00219 | RACCORDO | CONNECTOR | ANSCHLUSS | RACCORD |
| 0903 | 3-00365 | VALVOLA | VALVE | VENTIL | VANNE |
| 0904 | 3-00181 | SILENZIATORE | SILENCER | SCHALLDAEMPFER | SILENCIEUX |
| 1111 | 246426 | RACCORDO | CONNECTOR | ANSCHLUSS | RACCORD |
| 1112 | 3-00182 | SILENZIATORE | SILENCER | SCHALLDAEMPFER | SILENCIEUX |



| | | | | | |
|------|----------|------------------|-------------|-----------------|---------------|
| 0001 | 460076 | FRONTALE | FRONT PANEL | STIRNBAND | FRONTAL |
| 1202 | 460097 | TARGHETTA | DATA PLATE | TYPENSCHILD | PLAQUETTE |
| 1203 | 4-105489 | SCHEDA ELETTRON. | P.C. BOARD | ELEKTR. PLATINE | FICHE ELECTR. |
| 1204 | 4-101848 | CAVO (H) | CABLE (H) | KABEL (H) | CABLE (H) |
| 1205 | 4-101846 | CAVO (J) | CABLE (J) | KABEL (J) | CABLE (J) |
| 1206 | 4-101845 | CAVO (I) | CABLE (I) | KABEL (I) | CABLE (I) |
| 1207 | 4-101847 | CAVO (G) | CABLE (G) | KABEL (G) | CABLE (G) |

.....

.....

.....

.....

.....

.....

.....

.....

.....

.....

.....

.....

.....

.....

.....

.....

.....

.....

.....

.....

.....

Il disegno è realizzato con tutti i particolari ma solo quelli codificati sono forniti come ricambi. L'Azienda si riserva la facoltà di apportare modifiche senza preavviso.



Via per Carpi, n°9 - 42015 Correggio (RE) ITALY
Tel. ++39 0522 639111 - Fax ++39 0522 639150
www.corgi.com - info@corgi.com

The drawing shows all parts but only the coded parts are supplied as spares. The Company reserves the right to make modifications without prior notice.

COMIM - Cod. 4-105225C - 1108