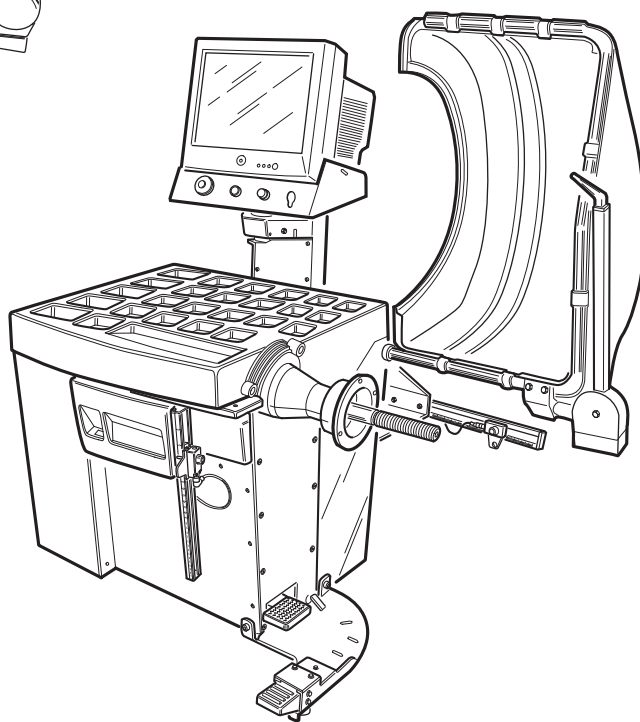
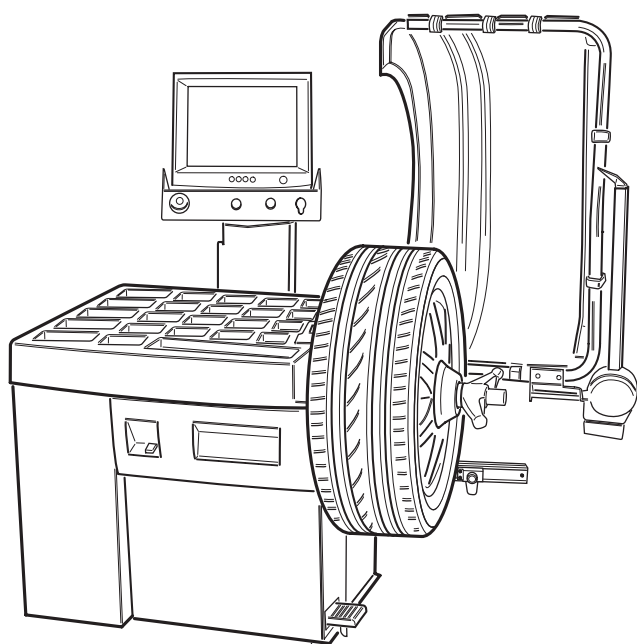


Questo libretto non autorizza l'utente ad intervenire sulle macchine ad esclusione di quanto esplicitamente descritto nel Manuale d'uso, ma consente all'utente di fornire informazioni precise all'Assistenza tecnica, al fine di ridurre i tempi di intervento.

# EM8570 QL RR / RLR D40

The "Spare parts" booklet does not authorize the user to carry out work on the machine unless expressly specified in the instruction manual, but does enable him to provide accurate information to the assistance service in order to reduce downtime.

## PEZZI DI RICAMBIO SPARE PARTS LIST ERSATZTEILLISTE PIECES DE RECHANGE



Code

**4-I05226C**

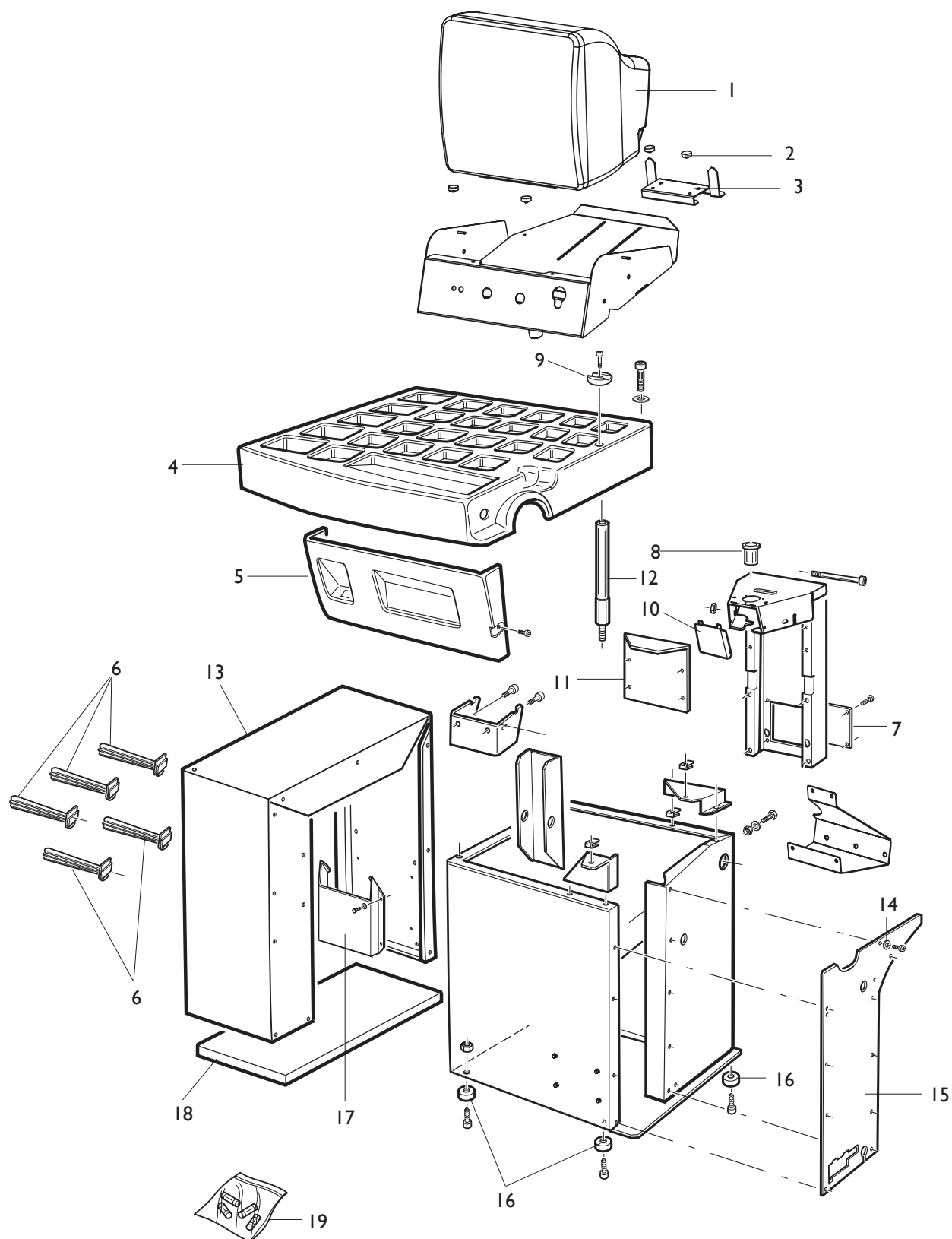
Production from

**11 / 2008**

Der Katalog Ersatzteile stellt keine Genehmigung zu eigenmächtigen Eingriffen dar (mit Ausnahme jener im Handbuch beschriebenen), sondern er soll den Anwender in die Lage versetzen, dem technischen Service präzise Informationen zu liefern, um die Reparaturzeiten zu verkürzen.



Le livret "Pièces de rechange", n'autorise pas l'utilisateur à intervenir sur les machines, sauf pour tout ce qui est clairement décrit dans le manuel d'utilisation, mais lui permet de fournir des informations précises à l'assistance technique, afin de diminuer les délais d'intervention.



	<b>EM8570 QL RR D40</b> <b>EM8570 QL RLR D40</b>	<b>Fig. A</b>	<b>07A / 06</b>	<b>Cassone + Testata + Portapesi</b>
--	---	---------------	-----------------	--------------------------------------

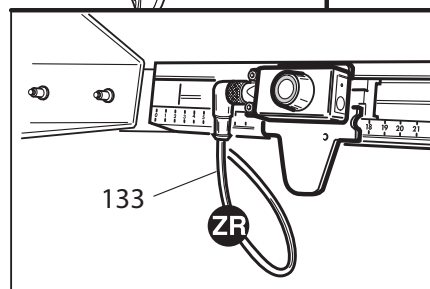
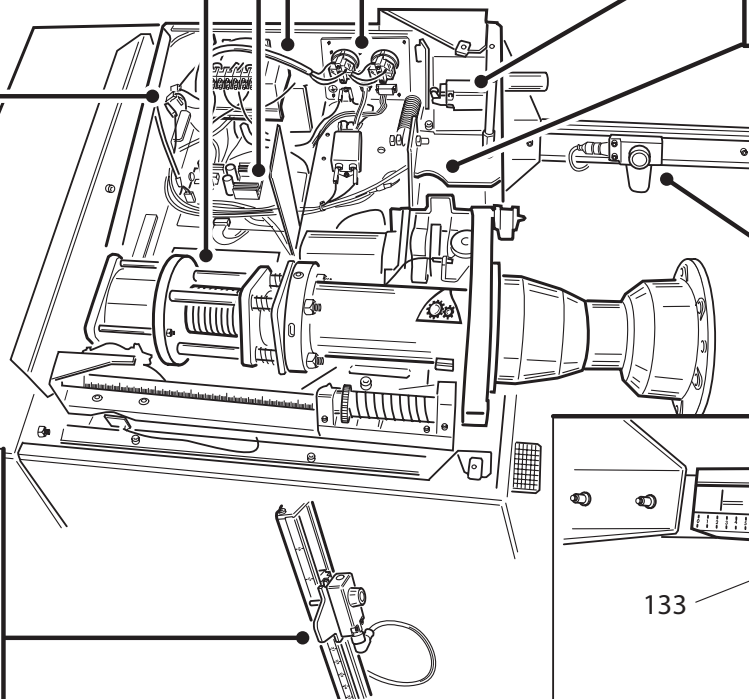
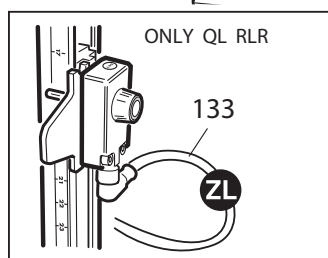
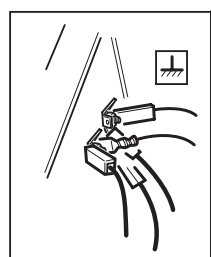
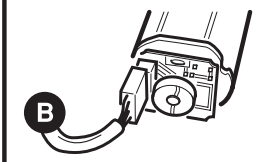
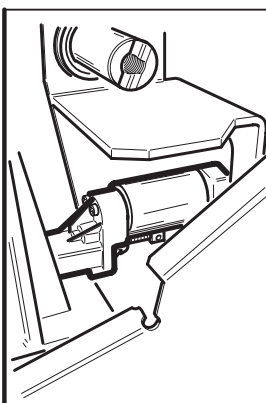
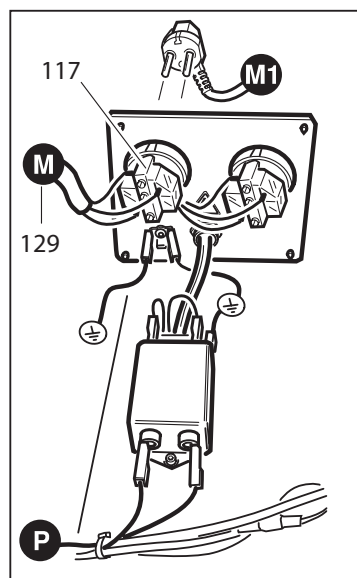
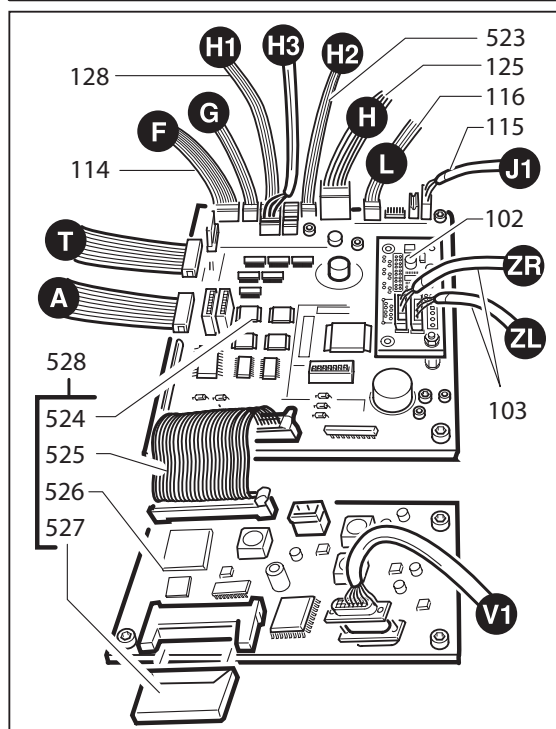
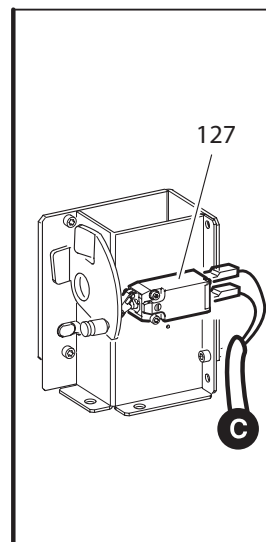
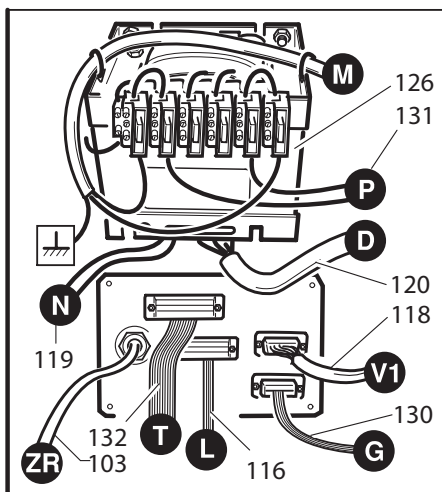
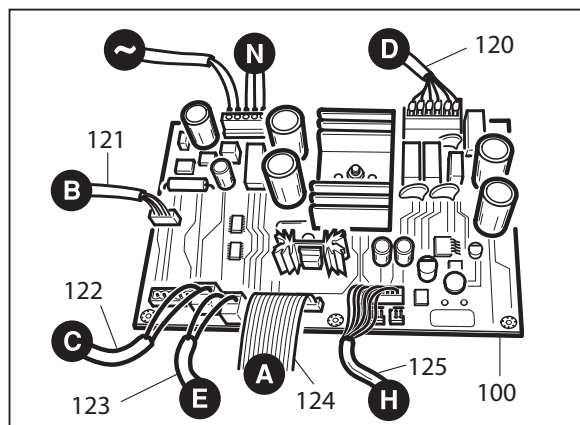
0001	4-104933	MONITOR 17"	MONITOR 17"	MONITOR 17"	MONITEUR 17"
0002	462193	PIEDE	FOOT	FUSS	PIED
0003	4-100033	STAFFA	BRACKET	KLAUE	ETRIER
0004	4-102895	COPERCHIO	LID	DECKEL	COUVERCLE
0006	438319	SUPPORTO	SUPPORT	LAGER	SUPPORT
0007	353984	PANNELLO	PANEL	VERKLEIDUNG	PANNEAU
0008	433663	BOCCOLA	BUSHING	LAGER	DOUILLE
0009	336581	INCUDINE	ANVIL	AMBOSS	ENCLUME
0010	360518/16	PANNELLO rosso	PANEL red	VERKLEIDUNG rot	PANNEAU rouge
0010	360518/25	PANNELLO blu	PANEL blue	VERKLEIDUNG blau	PANNEAU bleu
0010	360518/39	PANNELLO grigio	PANEL gray	VERKLEIDUNG grau	PANNEAU gris
0011	360069/16	CARTER rosso	CASING red	GEHAUSE rot	CARTER rouge
0011	360069/25	CARTER blu	CASING blue	GEHAUSE blau	CARTER bleu
0011	360069/39	CARTER grigio	CASING gray	GEHAUSE grau	CARTER gris
0012	4-102899	SUPPORTO	SUPPORT	LAGER	SUPPORT
0013	360047/16	MOBILE rosso	CABINET red	SCHRANK rot	MEUBLE rouge
0013	360047/25	MOBILE blu	CABINET blue	SCHRANK blau	MEUBLE bleu
0013	360047/39	MOBILE grigio	CABINET gray	SCHRANK grau	MEUBLE gris
0014	453504	RONDELLA	WASHER	UNTERLEGSCHIEBE	RONDELLE
0015	4-101926	COFANO	HOOD	HAUBE	COFFRE
0016	360368	PIEDE	FOOT	FUSS	PIED
0017	355994	CONTENITORE	CONTAINER	BEHAELTER	CONTENEUR
0018	360345/16	RINFORZO rosso	REINFORCEMENT red	VERSTAERKUNG rot	RENFORT grigio
0018	360345/25	RINFORZO blu	REINFORCEMENT blue	VERSTAERKUNG blau	RENFORT bleu
0018	360345/39	RINFORZO grigio	REINFORCEMENT gray	VERSTAERKUNG grau	RENFORT gris
0019	236665	SACCHETTO 5AT	BAG 5AT	BEUTEL	SACHET
0019	241582	FUSIBILE 0.5 AT	FUSE 0.5AT	SICHERUNG	FUSIBLE
0019	232942	SACCHETTO 3.15T	BAG 3.15T	BEUTEL	SACHET
0019	229690	SACCHETTO 0,5 A	BAG 0,5A	BEUTEL	SACHET
0019	5-100812	SACCHETTO 3AT	BAG 3AT	BEUTEL	SACHET
0019	5-100813	SACCHETTO 8AF	BAG 8AF	BEUTEL	SACHET
0019	5-100814	SACCHETTO 20AT	BAG 20AT	BEUTEL	SACHET

**ONLY EM8570 QL RR**

0005	4-102926	COFANO	HOOD	HAUBE	COFFRE
------	----------	--------	------	-------	--------

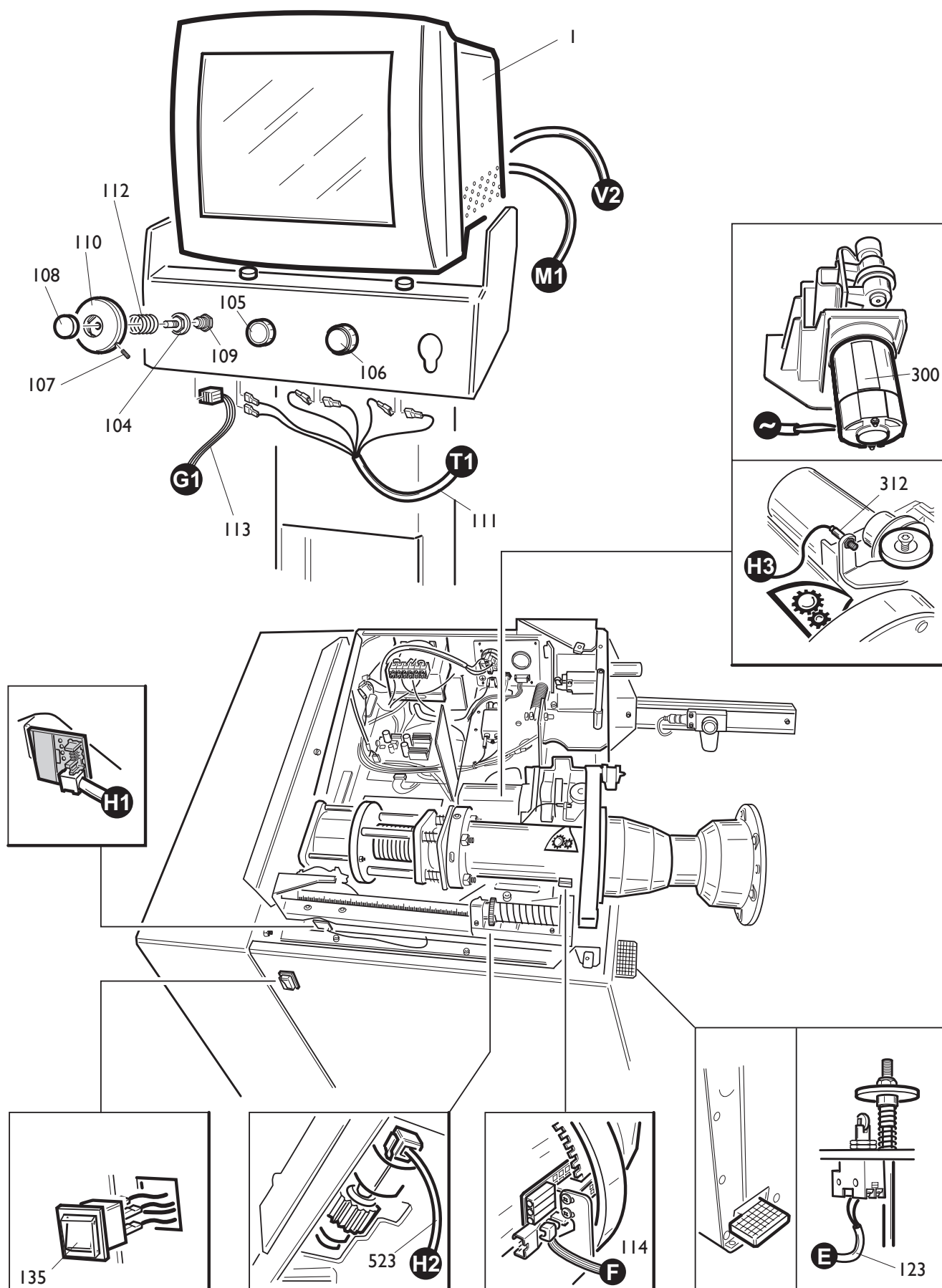
**ONLY EM8570 QL RLR**

0005	4-104837	COFANO	HOOD	HAUBE	COFFRE
------	----------	--------	------	-------	--------



	<b>EM8570 QL RR D40</b> <b>EM8570 QL RLR D40</b>	<b>Fig. B I</b>	<b>I 2 / 07</b>	<b>Impianto elettrico</b>
--	---	-----------------	-----------------	---------------------------

0100	9004-103608	PWM	PWM	PWM	PWM
0102	4-103804	SK. INT. SONAR	P.C. BOARD	ELEKTR. PLATINE	FICHE ELECTR.
0114	454754	CAVO	CABLE	KABEL	CABLE
0115	253697	CAVO	CABLE	KABEL	CABLE
0116	453698	CAVO	CABLE	KABEL	CABLE
0117	453965	PRESA	PLUG	STECKDOSE	PRISE
0118	253692	CAVO	CABLE	KABEL	CABLE
0119	453702	CAVO	CABLE	KABEL	CABLE
0120	4-101841	CAVO	CABLE	KABEL	CABLE
0121	4-101759	CAVO	CABLE	KABEL	CABLE
0122	4-101674	CAVO	CABLE	KABEL	CABLE
0123	4-101677	CAVO	CABLE	KABEL	CABLE
0124	4-101838	CAVO	CABLE	KABEL	CABLE
0125	4-103199	CAVO	CABLE	KABEL	CABLE
0126	4-102939	TRASFORMATORE	TRANSFORMER	TRANSFORMATOR	TRANSFORMATEUR
0127	457753	MICROINTERRUTTORE	MICROSWITCH	MIKROSCHALTER	MICROINTERRUPT.
0128	4-102559	CAVO FLAT	FLAT CABLE	FLACHER KABEL	CABLE FLAT
0129	462586	CAVO	CABLE	KABEL	CABLE
0130	453477	CAVO FLAT	FLAT CABLE	FLACHER KABEL	CABLE FLAT
0131	5-100928	CAVO	CABLE	KABEL	CABLE
0132	453701	CAVO FLAT	FLAT CABLE	FLACHER KABEL	CABLE FLAT
0133	5-102227	CAVO SONAR	CABLE	KABEL	CABLE
0523	4-101678	CAVO FLAT	FLAT CABLE	FLACHER KABEL	CABLE FLAT
0524	9005-102069	SK.EL+CF PROG.	P.C. BOARD		
0525	4-104685	CAVO FLAT	FLAT		
0526	4-105739	SK.GRAFICA FPGA 2	P.C. BOARD FPGA2		
0527	3-02032	CFVUOTA	CF		
0528	9005-102068	KIT SCHEDE	P.C. BOARD KIT		

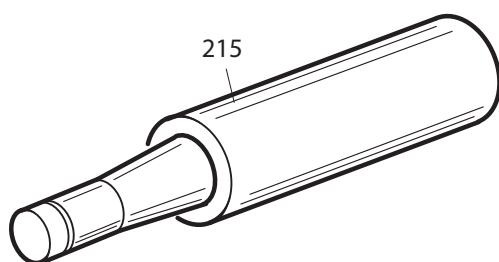
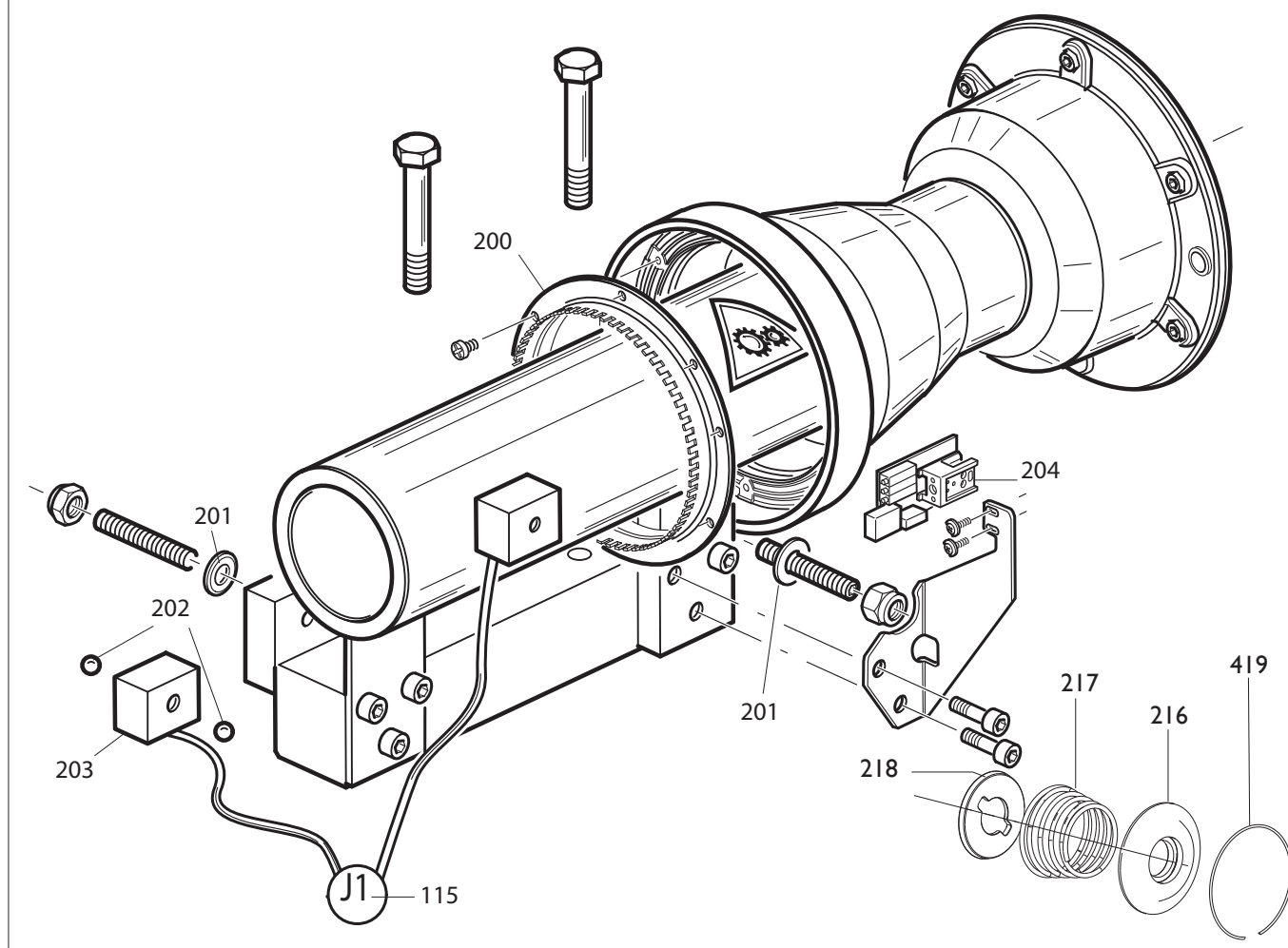


	<b>EM8570 QL RR D40</b> <b>EM8570 QL RLR D40</b>	<b>Fig. B2</b>	<b>07 / 06</b>	<b>Impianto elettrico</b>
--	---	----------------	----------------	---------------------------

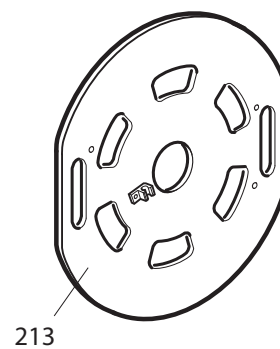
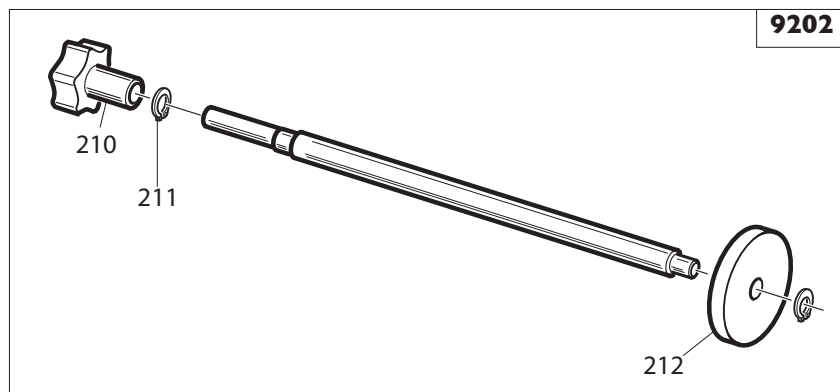
0001	4-104933	MONITOR 17"	MONITOR 17"	MONITOR 17"	MONITEUR 17"
0104	248812	ENCODER	ENCODER	ENCODER	ENCODER
0105	900256213	PULSANTE START	START	START	START
0106	9005-100313	PULSANTE STOP	STOP	STOP	STOP
0107	2-00854	VITE	SCREW	SCHRAUBE	VIS
0108	435315	TAPPO	PLUG	STOPFEN	BOUCHON
0109	453434	MICROINTERRUTTORE	MICROSWITCH	MIKROSCHALTER	MICROINTERRUPT.
0110	453474	ATTUATORE KIS	ACTUATOR	DREHTRIEB	ACTUATEUR
0111	453778	CAVO COLL.TO	CABLE	KABEL	CABLE
0112	453968	MOLLA	MOLLA	SPRING	FEDER RESSORT
0113	454238	FLAT KIS	FLAT CABLE	FLACHER KABEL	CABLE FLAT
0114	454754	CAVO	CABLE	KABEL	CABLE
0135	433848	INTERRUTTORE	SWITCH	SCHALTER	INTERRUPTEUR
0300	4-101216	MOTORE	MOTOR	MOTOR	MOTEUR
0312	4-102905	SENSORE	SENSOR	SENSOR	CAPTEURS
0523	4-101678	CAVO FLAT	FLAT CABLE	FLACHER KABEL	CABLE FLAT



9203



9202





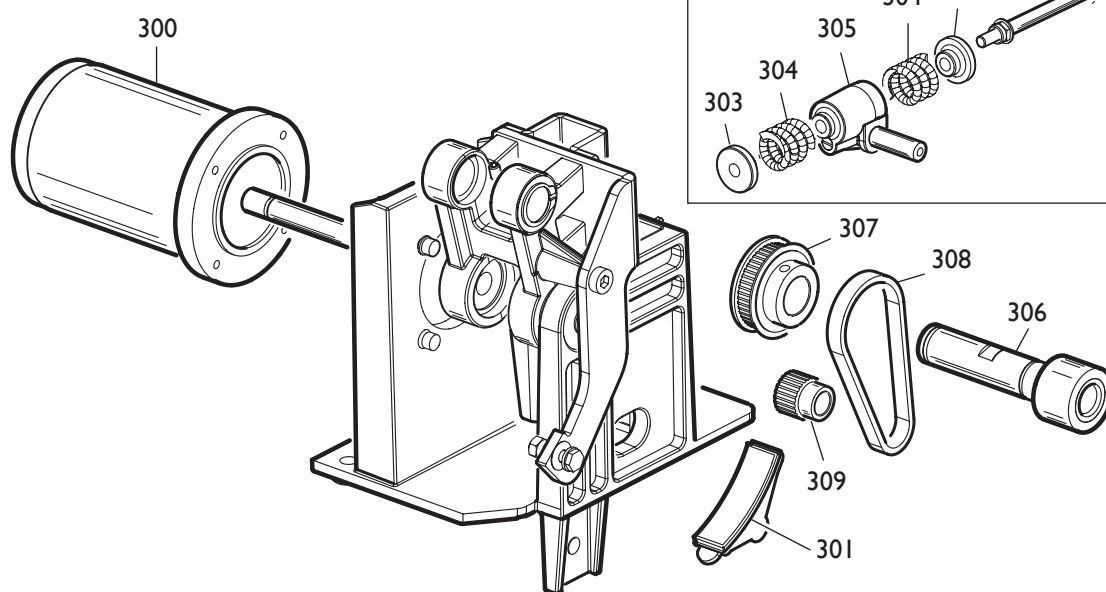
	<b>EM8570 QL RR D40</b> <b>EM8570 QL RLR D40</b>	<b>Fig. C</b>	<b>I I / 08</b>	<b>Gruppo oscillante</b>
--	---	---------------	-----------------	--------------------------

<b>9203</b>	<b>5-100971</b>	<b>GRUPPO</b>	<b>ASSEMBLY</b>	<b>GRUPPE</b>	<b>GROUPE</b>
0200	449310	DISCO	DISK	SCHEIBE	DISQUE
0204	900249280	SK ELETTRONICA	P.C. BOARD	ELEKTR. PLATINE	FICHE ELECTR.
0201	424993	MOLLA	SPRING	FEDER	RESSORT
0202	2-00243	SFERA	BALL	KUGEL	BILLE
0203	900243591	PICK-UP	PICK-UP	PICK-UP	PICK-UP
0424	5-101468	ANELLO	RING	RING	ANNEAU
0419	4-101740	ANELLO	RING	RING	ANNEAU
0216	4-104590	DISCO PR.MOLLA D.40	DISK	SCHEIBE	DISQUE
0217	4-107939	MOLLA	SPRING	FEDER	RESSORT
0218	4-107906	ANELLO C.MOLLA D.40	SPACER	ABSTANDSSTUECK	ENTRETOISE

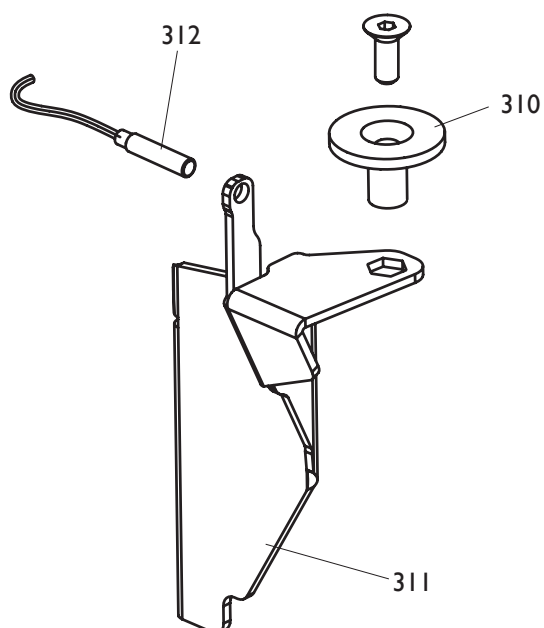
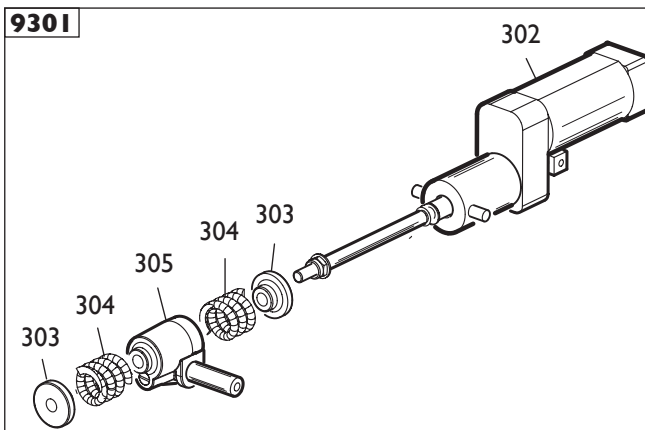
<b>9202</b>	<b>259719</b>	<b>CONTRAPPESO</b>	<b>COUNTERWEIGHT</b>	<b>GEGENGEWICHT</b>	<b>CONTREPOIDS</b>
0210	459932	MANOPOLA	KNOB	BALLENGRIFF	BOUTON
0211	2-00021	ANELLO	RING	RING	ANNEAU
0212	2-02040	ANELLO	RING	RING	ANNEAU

0213	5-100026	DISCO	DISK	SCHEIBE	DISQUE
0215	5-101514	MOZZO	HUB	NABE	MOYEU
0115	253697	CAVO	CABLE	KABEL	CABLE

9302



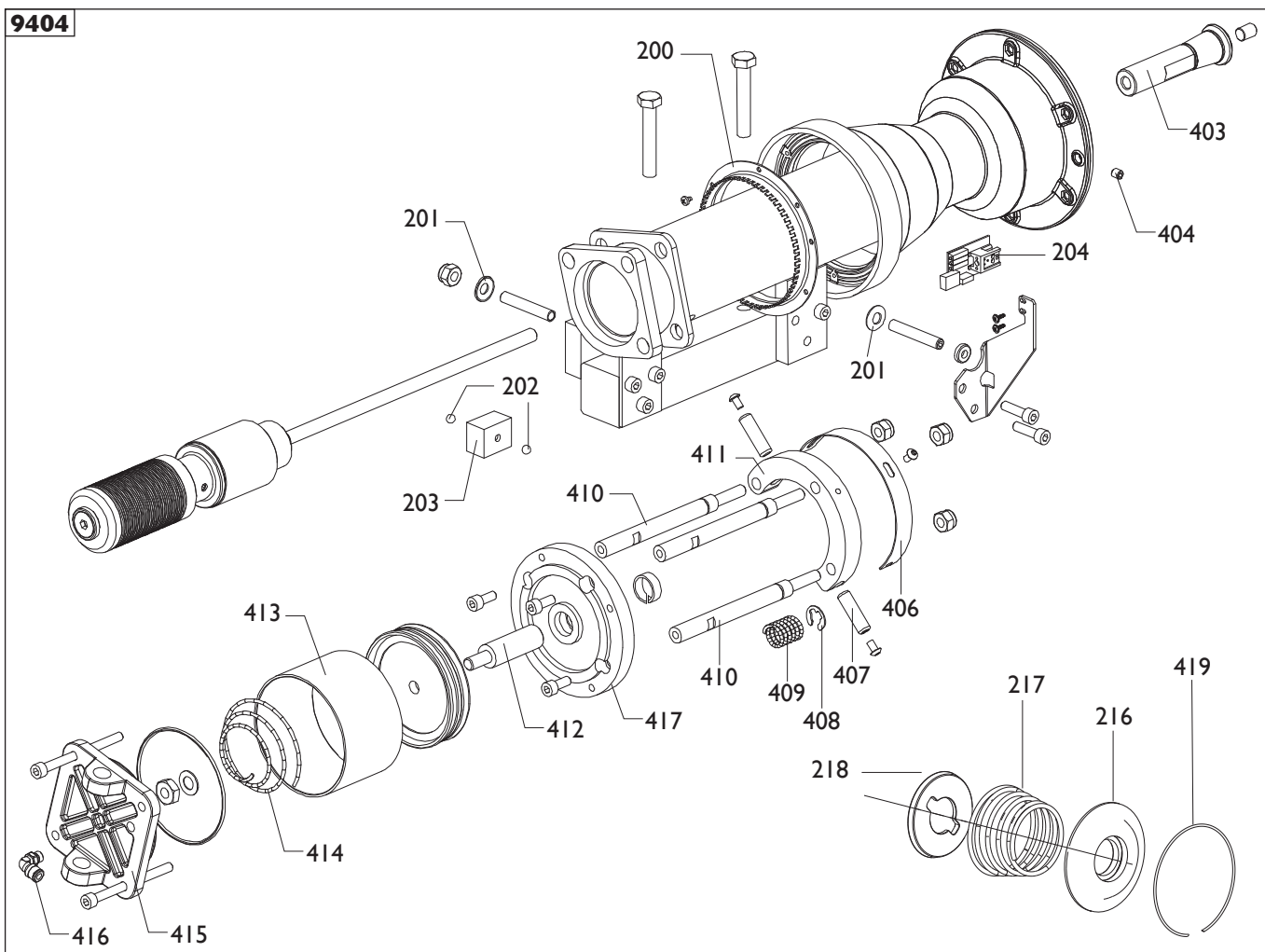
9301



	<b>EM8570 QL RR D40</b> <b>EM8570 QL RLR D40</b>	<b>Fig. D</b>	<b>07 / 06</b>	<b>Dispositivo di lancio</b>
--	---	---------------	----------------	------------------------------

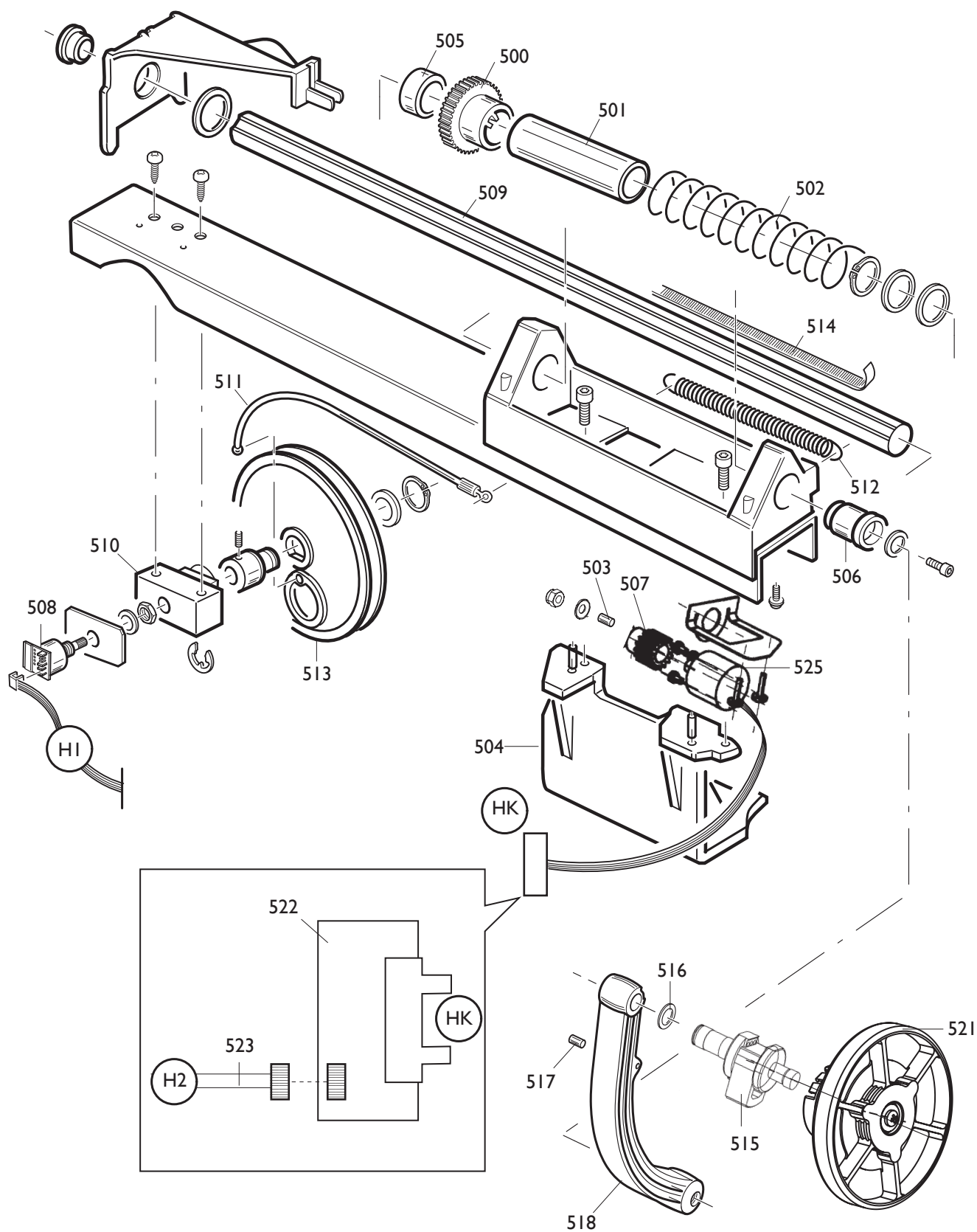
<b>9302</b>	<b>5-100405</b>	<b>GRUPPO</b>	<b>ASSEMBLY</b>	<b>GRUPPE</b>	<b>GROUPE</b>
0300	4-101216	MOTORE	MOTOR	MOTOR	MOTEUR
0301	4-102639	PATTINO	PAD	GLEITSTCHUH	PATIN
<b>9301</b>	<b>5-100411</b>	<b>ATTUATORE</b>	<b>ACTUATOR</b>	<b>DREHTRIEB</b>	<b>ACTUATEUR</b>
0302	4-101223	ATTUATORE	ACTUATOR	DREHTRIEB	ACTUATEUR
0303	4-101224	BOCCOLA	BUSHING	LAGER	DOUILLE
0304	4-101226	MOLLA	SPRING	FEDER	RESSORT
0305	4-101225	BLOCCHETTO	BLOCK	BLOCK	BLOC
0306	4-101220	RULLO	ROLLER	WALZE	ROULEAU
0307	4-101214	PULEGGIA	PULLEY	RIEMENSCHIEBE	POULIE
0308	3-01328	CINGHIA	BELT	RIEMEN	COURROIE
0309	4-101213	PULEGGIA	PULLEY	RIEMENSCHIEBE	POULIE
0310	4-103760	DISCO	DISK	SCHEIBE	DISQUE
0311	4-103767	STAFFA	BRACKET	KLAUE	ETRIER
0312	4-102905	SENSORE	SENSOR	SENSOR	CAPTEURS

9404



<b>9404</b>	<b>5-100940</b>	<b>GRUPPO</b>	<b>ASSEMBLY</b>	<b>GRUPPE</b>	<b>GROUPE</b>
0200	449310	DISCO	DISK	SCHEIBE	DISQUE
0201	424993	MOLLA	SPRING	FEDER	RESSORT
0202	2-00243	SFERA	BALL	KUGEL	BILLE
0203	900243591	PICK-UP	PICK-UP	PICK-UP	PICK-UP
0204	900249280	SK ELETTRONICA	P.C. BOARD	ELEKTR. PLATINE	FICHE ELECTR.
0403	4-101311	BLOCCHETTO	BLOCK	BLOCK	BLOC
0404	2-02682	VITE	SCREW	SCHRAUBE	VIS
0406	4-101646	FASCE	BAND	BAND	BANDE
0407	2-03233	SPINA	PLUG	STECKER	FICHE
0408	2-01015	ANELLO	RING	RING	ANNEAU
0409	4-101043	MOLLA	SPRING	FEDER	RESSORT
0410	4-100961	PERNO	PIN	ZAPFEN	PIVOT
0411	4-100960	FLANGIA	FLANGE	FLANSCH	FLASQUE
0412	363434	STELO	STEM	SCHAFT	TIGE
0413	338818	CILINDRO	CYLINDER	ZYLINDER	CYLINDRE
0414	463364	MOLLA	SPRING	FEDER	RESSORT
0415	357265	FLANGIA	FLANGE	FLANSCH	FLASQUE
0416	3-00053	RACCORDO	CONNECTOR	ANSCHLUSS	RACCORD
0417	4-100962	FLANGIA	FLANGE	FLANSCH	FLASQUE
0419	4-101740	ANELLO	RING	RING	ANNEAU
0216	4-104590	DISCO PR.MOLLA D.40	DISK	SCHEIBE	DISQUE
0217	4-107939	MOLLA	SPRING	FEDER	RESSORT
0218	4-107906	ANELLO C.MOLLA D.40	SPACER	ABSTANDSSTUECK	ENTRETOISE

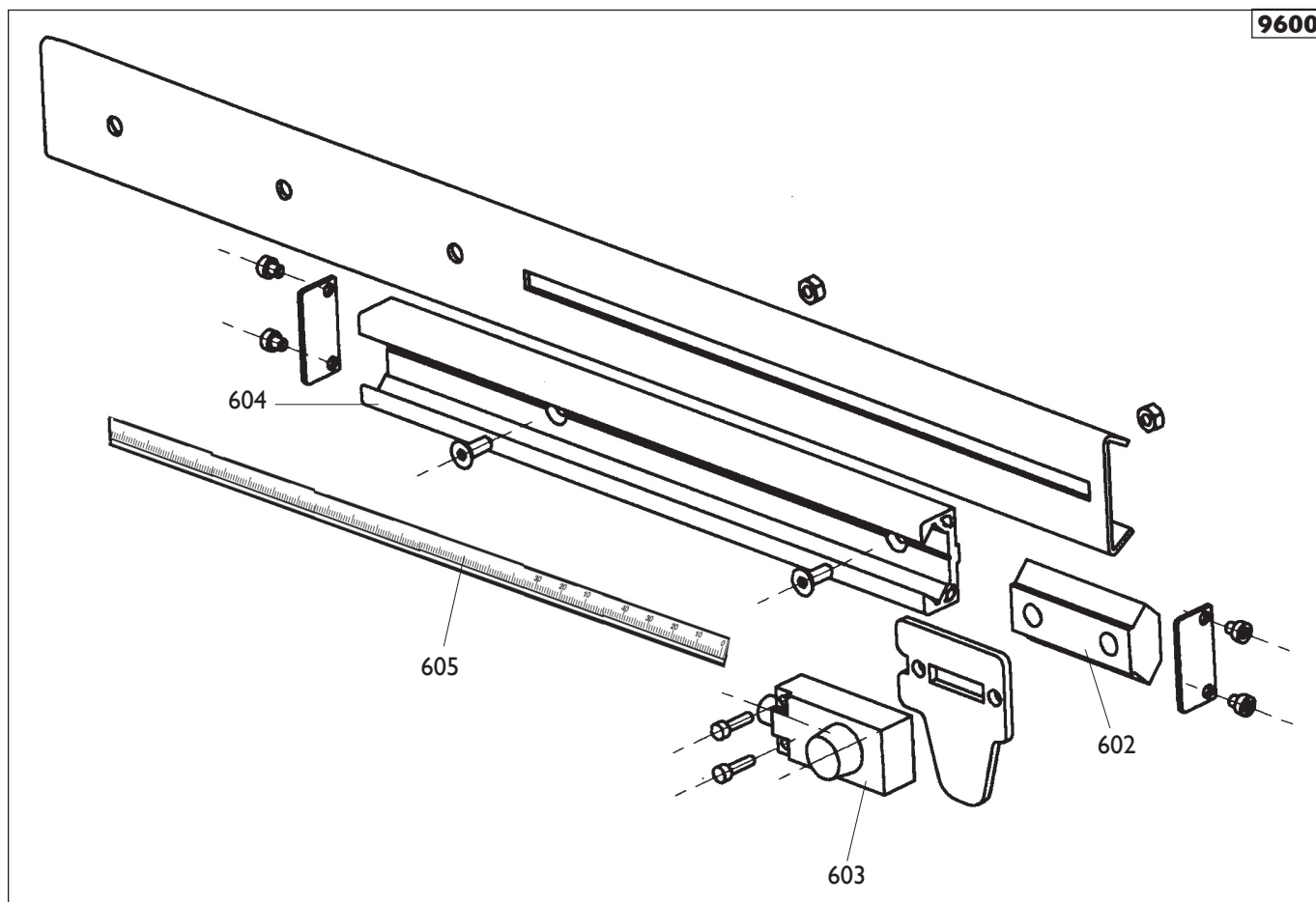
0422	9005-100949	KIT GUARNIZIONI	SEALS KIT	DICHTUNGSATZ	KIT JOINTS
0215	5-101514	MOZZO	HUB	NABE	MOYEU



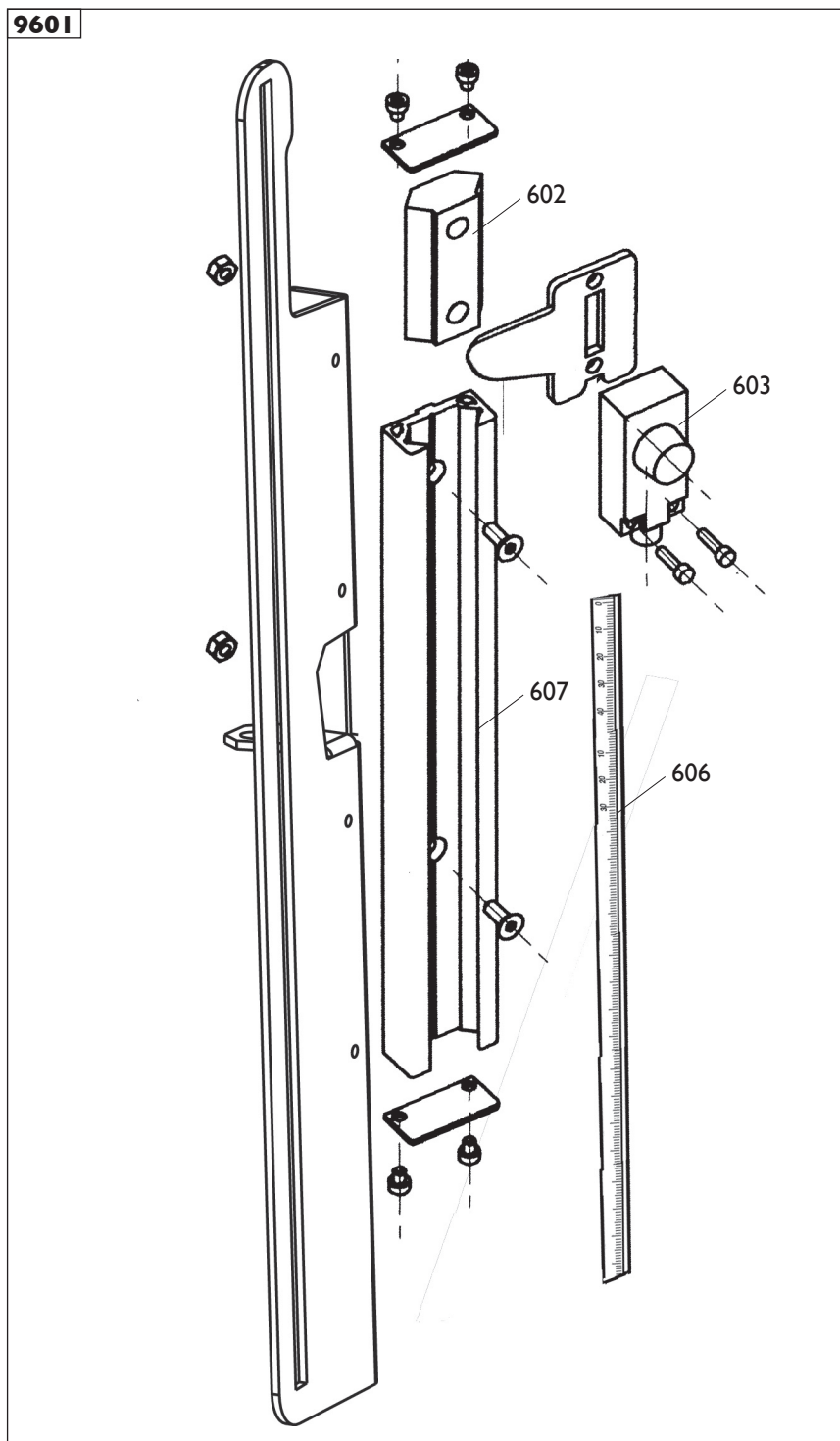
	<b>EM8570 QL RR D40</b> <b>EM8570 QL RLR D40</b>	<b>Fig. F</b>	<b>02 / 07</b>	<b>Gruppo rilevatore</b>
--	---	---------------	----------------	--------------------------

0500	35024229	BOCCOLA	BUSHING	LAGER	DOUILLE
0501	4-102889	DISTANZIALE	SPACER	ABSTANDSSTUECK	ENTRETOISE
0502	4-102886	MOLLA	SPRING	FEDER	RESSORT
0503	33021118	VITE	SCREW	SCHRAUBE	VIS
0504	4-102726	SUPPORTO	SUPPORT	LAGER	SUPPORT
0505	439461	BOCCOLA	BUSHING	LAGER	DOUILLE
0506	4-102731	BOCCOLA	BUSHING	LAGER	DOUILLE
0507	35020979	PIGNONE	PINION	RITZEL	PIGNON
0508	4-102818	SCHEDA ELETTRONICA	P.C. BOARD	ELEKTR. PLATINE	FICHE ELECTR.
0509	357405	ASTA	SHAFT	STANGE	BARRE
0510	457404	SUPPORTO	SUPPORT	LAGER	SUPPORT
0511	457130	FUNE	CABLE	SEIL	CABLE
0512	4-102888	MOLLA	SPRING	FEDER	RESSORT
0513	900257481	PULEGGIA	PULLEY	RIEMENSCHIEBE	POULIE
0514	439488	TARGHETTA	DATA PLATE	TYPENSCHILD	PLAQUETTE
0515	9005-101342	TERMINALE	TERMINAL	ENDVERSCHLUSS	COSSE
0516	450073	ANELLO	RING	RING	ANNEAU
0517	4-102903	MAGNETE	MAGNETO	MAGNET	AIMANT
0518	4-102618	LEVA	LEVER	HEBEL	LEVIER
0521	5-101390	ROTELLA	WHEEL	RAEDCHEN	ROULETTE
0522	4-104932	SK ELETTRONICA	P.C. BOARD	ELEKTR. PLATINE	FICHE ELECTR.
0523	4-101678	CAVO FLAT	FLAT CABLE	FLACHER KABEL	CABLE FLAT
0525	4-104312	ENCODER	ENCODER	CODIERER	ENCODER

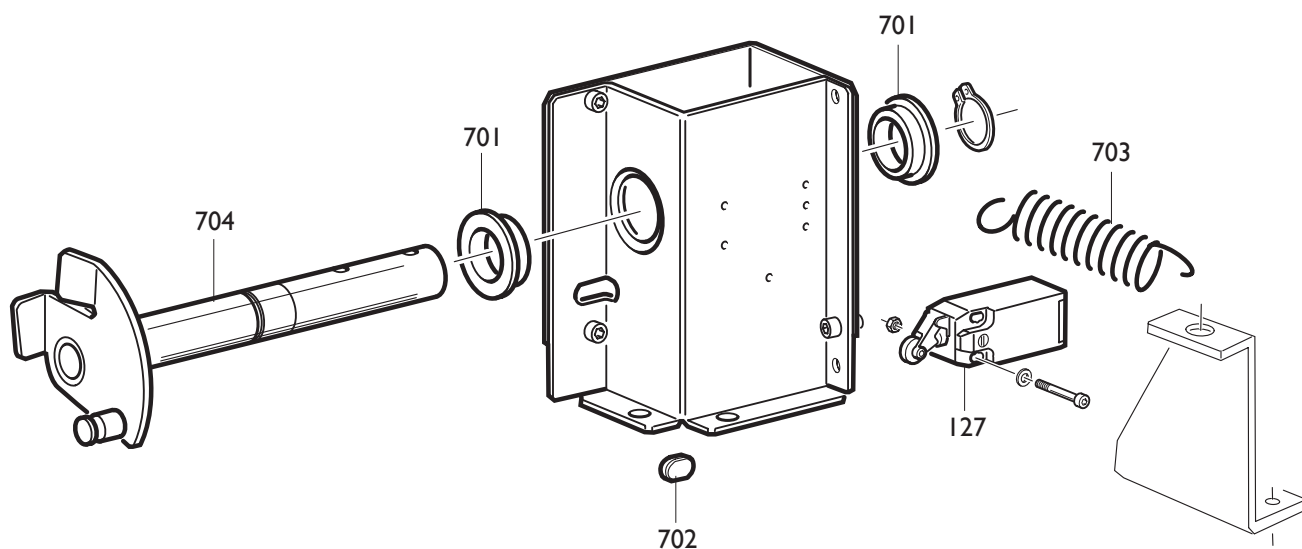


**9600**


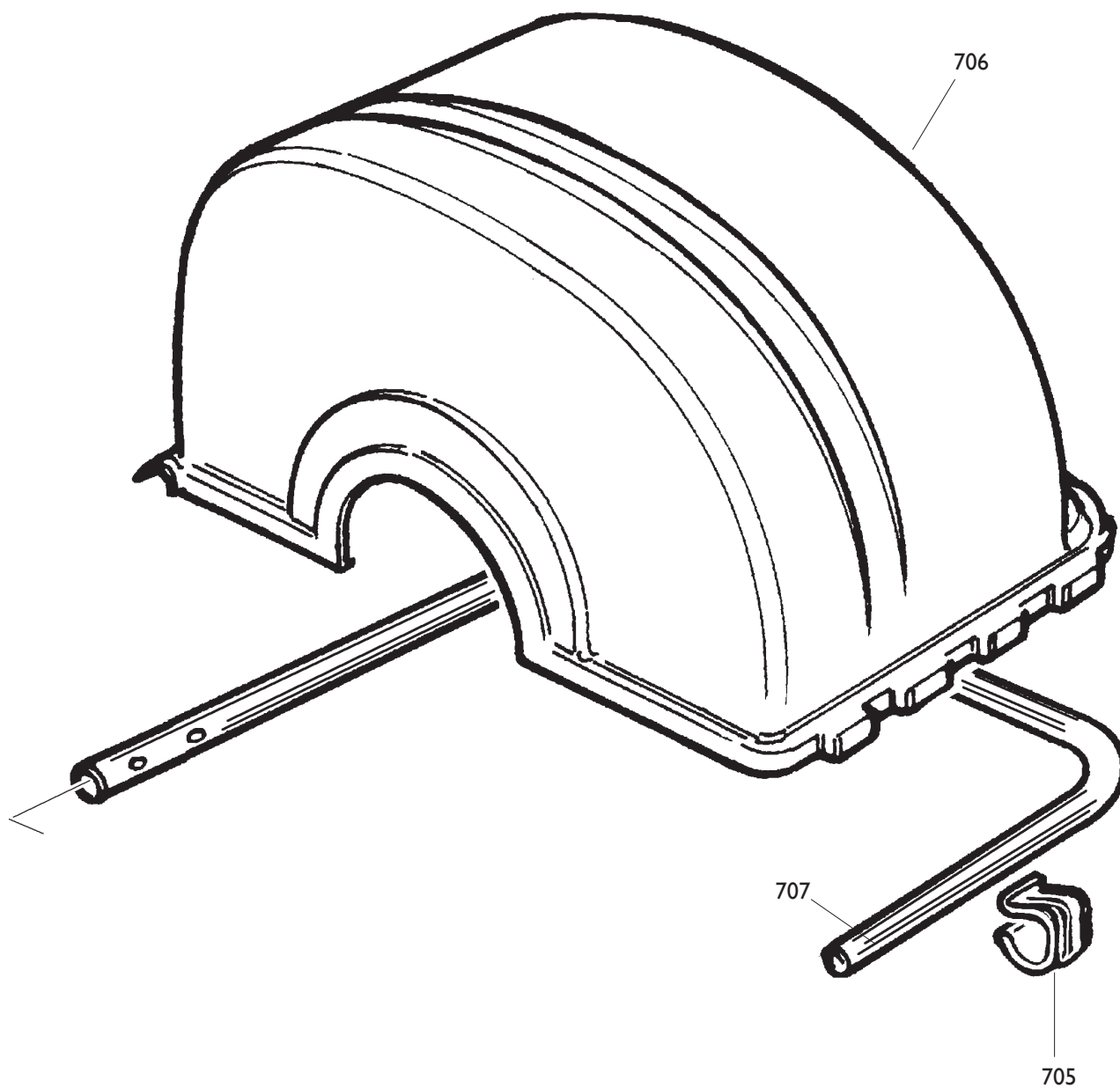
<b>9600</b>	<b>5-101183</b>	<b>GRUP. RILEVATORE</b>	<b>SIGNAL TR. ASS.</b>	<b>AUFNEHMER GRUPPE</b>	<b>GR.MESUREUR</b>
0602	4-104055	PATTINO	PAD	GLEITSTCHUH	PATIN
0603	4-104053	SENSORE	SENSOR	SONDE	CAPTEUR
0604	4-103631	TRAFILATO	DRAWN	GEZOGEN	TREFILE
0605	4-104860	ADESIVO	DECAL	KLEBER	ADHESIF

**9601**


<b>9601</b>	<b>5-101566</b>	<b>GRUP. RILEVATORE</b>	<b>SIGNAL TR. ASS.</b>	<b>AUFNEHMER GRUPPE</b>	<b>GR.MESUREUR</b>
0602	4-104055	PATTINO	PAD	GLEITSTCHUH	PATIN
0603	4-104053	SENSORE	SENSOR	SONDE	CAPTEUR
0607	4-104472	TRAFILATO	DRAWN	GEZOGEN	TREFILE
0606	4-104622	ADESIVO	DECAL	KLEBER	ADHESIF

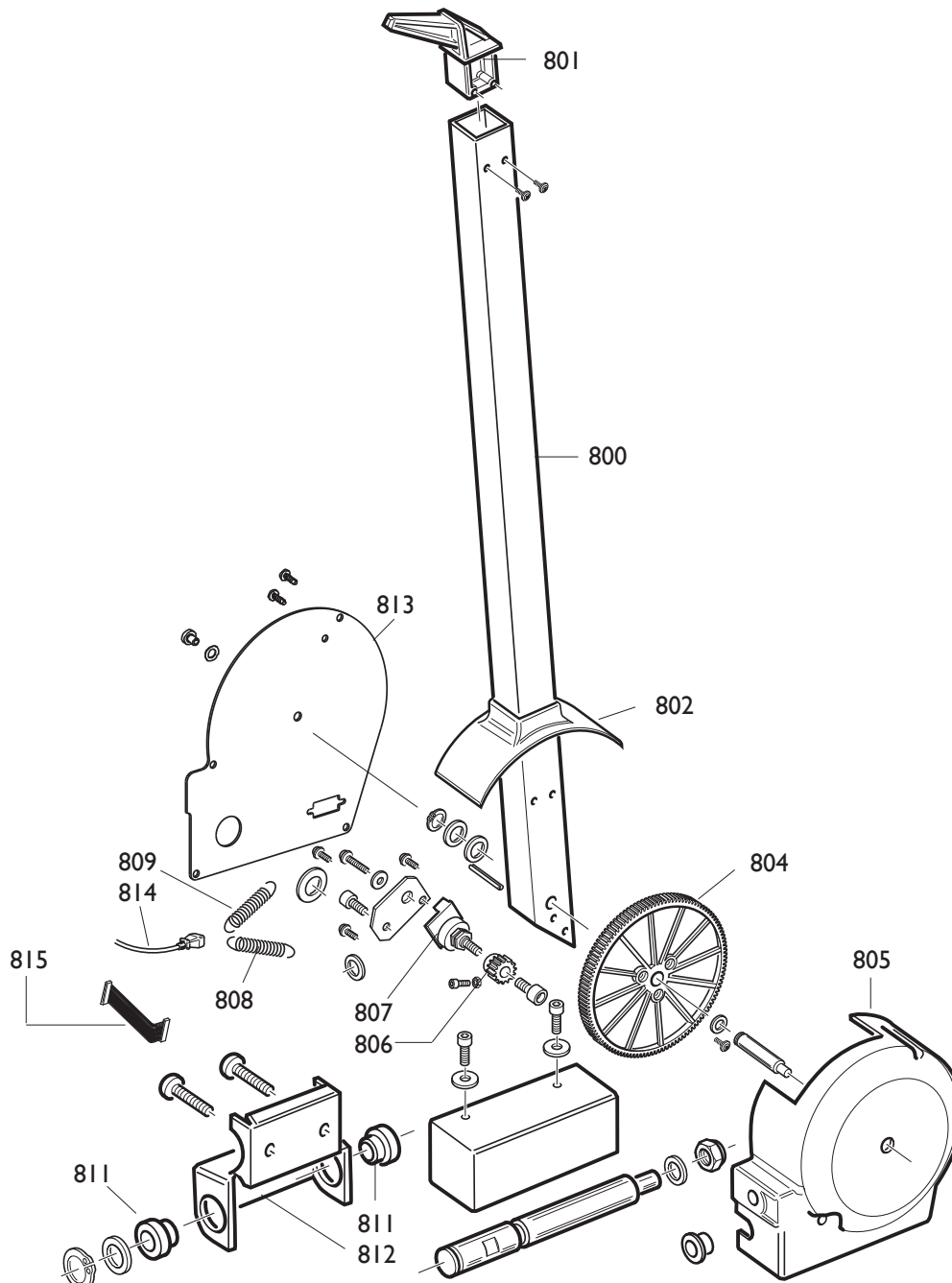


0127	457753	MICROINTERRUTTORE	MICROSWITCH	MIKROSCHALTER	MICROINTERRUPT.
0701	433637	BOCCOLA	BUSHING	LAGER	DOUILLE
0702	413163	TASSELLO	BLOCK	EINSATZSTUECK	TAMPON
0703	449270	MOLLA	SPRING	FEDER	RESSORT
0704	253453	FERMO	RETAINER	ANSCHLAG	ARRET

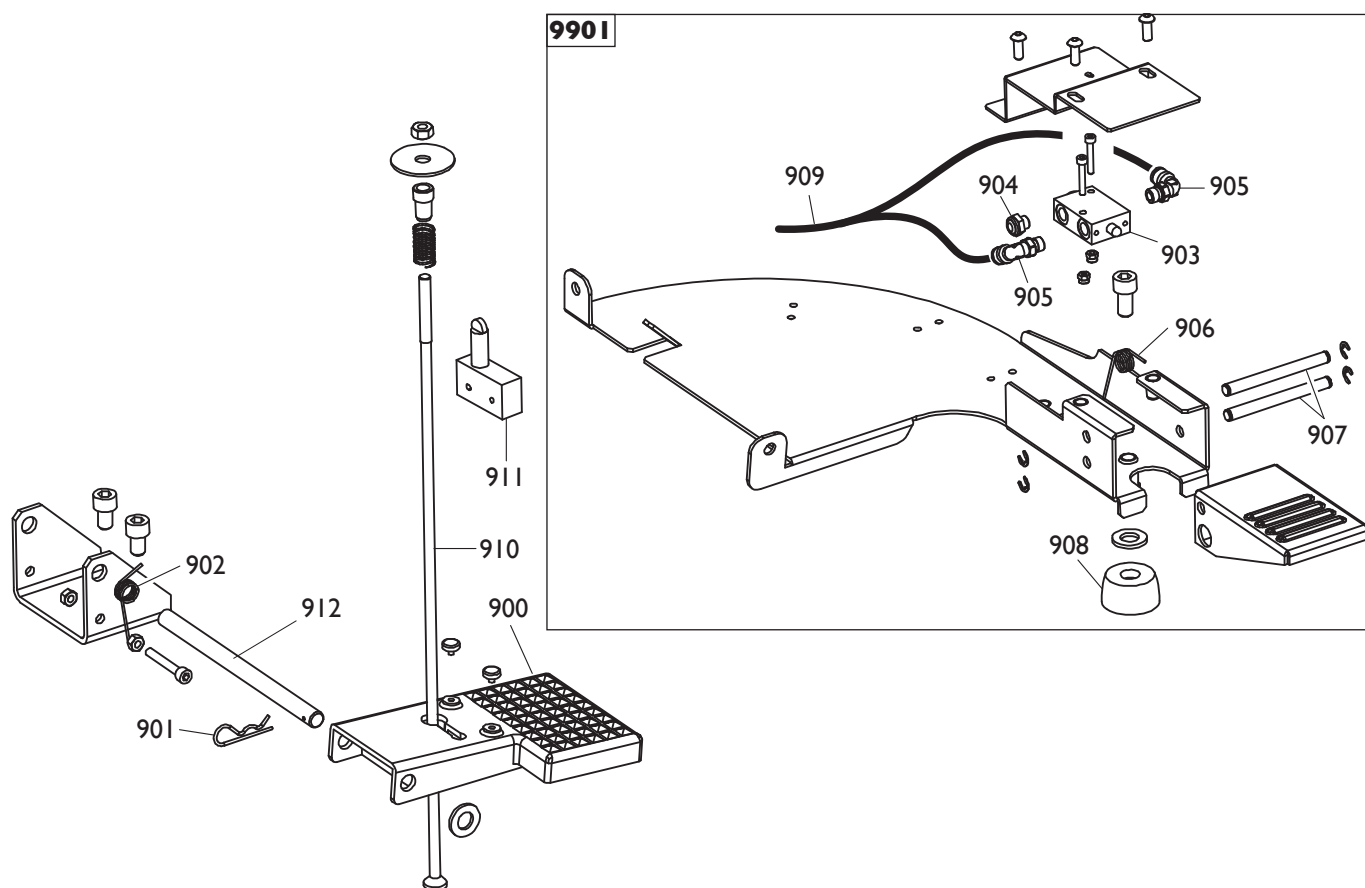


0705	449273	MOLLA	SPRING	FEDER	RESSORT
0706	4-102948	PROTEZIONE	SHIELD	ABDECKUNG	PROTECTION
0707	349272	TUBO	PIPE	ROHR	TUYAU

9801



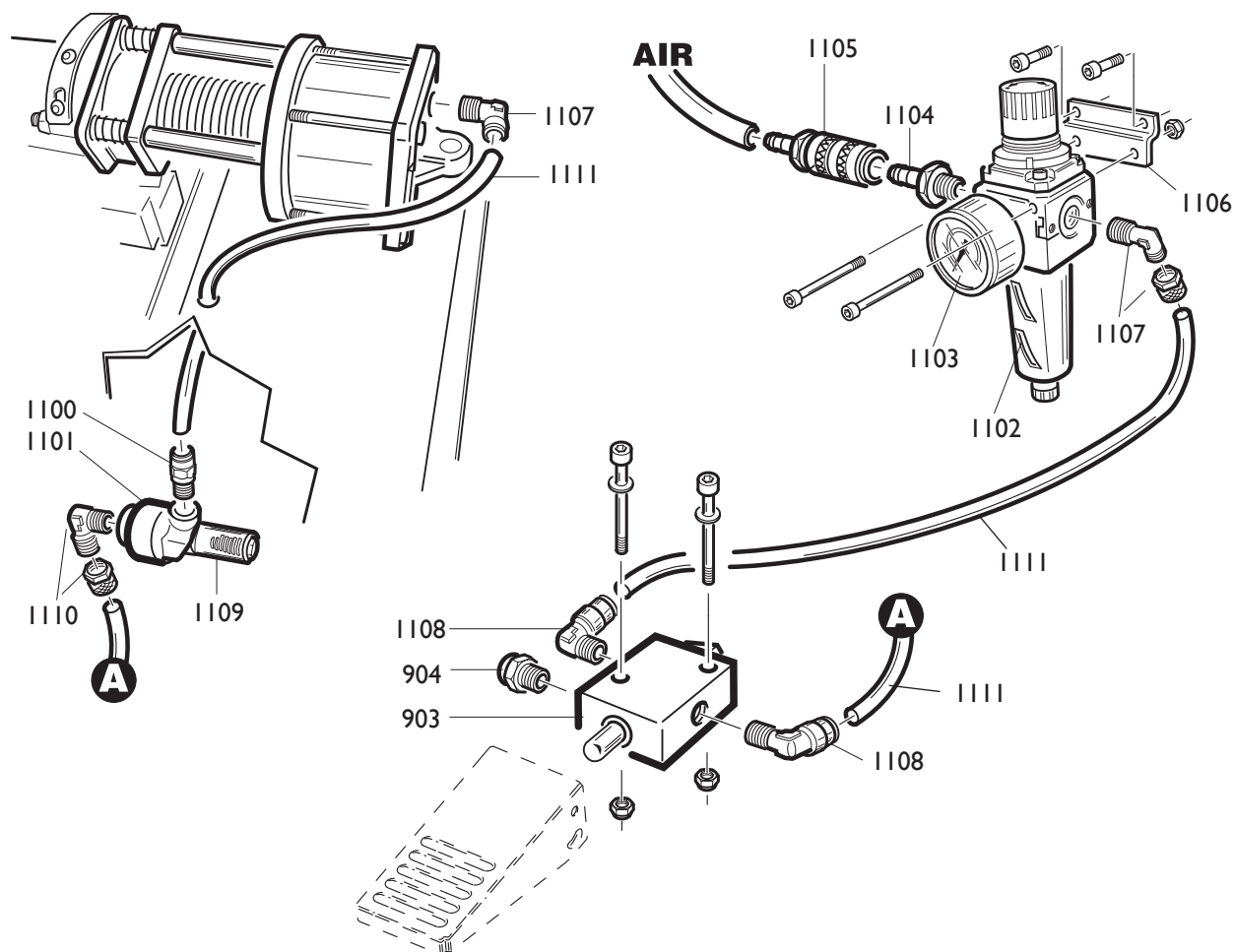
<b>980 I</b>	<b>802253426</b>	<b>RILEVATORE</b>	<b>SIGNAL TRACER</b>	<b>AUFNEHMER</b>	<b>MESUREUR</b>
0800	353559	BRACCIO	ARM	ARM	BRAS
0801	453572	TASTATORE	FEELER PIN	FUEHLER	PALPEUR
0802	454458	PROTEZIONE	SHIELD	ABDECKUNG	PROTECTION
0804	453579	INGRANAGGIO	GEAR	ZAHNRADGETRIEBE	ENGRENAGE
0805	454457	CORPO	BODY	KOERPER	CORPS
0806	449326	PIGNONE	PINIONa	RITZEL	PIGNON
0807	5-101455	POTENZIOMETRO	POTENZIOMETER	POTENTIOMETER	POTENTIOMETRE
0808	455120	MOLLA	SPRING	FEDER	RESSORT
0809	454239	MOLLA	SPRING	FEDER	RESSORT
0811	460109	BOCCOLA	BUSHING	LAGER	DOUILLE
0812	353502	SUPPORTO 37"	SUPPORT 37"	LAGER 37"	SUPPORT 37"
0812	360940	SUPPORTO 44"	SUPPORT 44"	LAGER 44"	SUPPORT 44"
0813	4-106072	COPERCHIO	LID	DECKEL	COUVERCLE
0814	4-106012	CONN.VASCHETTA L.2000	FLAT CABLE	FLACHER KABEL	CABLE FLAT
0815	4-106036	CAVO FLAT L.100	FLAT CABLE	FLACHER FLAT	CABLE FLAT



0910	453492	TIRANTE	STAY ROD	ZUGSTANGE	TIRANT
0911	4-104349	MICROINTERRUTTORE	MICROSWITCH	MIKROSCHALTER	MICROINTERRUPT.
0900	479233	PEDALE	PEDAL	PEDAL	PEDALE
0901	435055	MOLLA	SPRING	FEDER	RESSORT
0902	453495	MOLLA	SPRING	FEDER	RESSORT
0912	353508	PERNO	PIN		

<b>9900</b>	<b>5-100341</b>	<b>PEDALE</b>	<b>PEDAL</b>	<b>PEDAL</b>	<b>PEDALE</b>
0903	3-00365	VALVOLA	VALVE	VENTIL	VANNE
0904	3-00181	SILENZIATORE	SILENCER	SCHALLDAEMPFER	SILENCIEUX
0905	3-00217	RACCORDO	CONNECTOR	ANSCHLUSS	RACCORD
0906	437689	MOLLA	SPRING	FEDER	RESSORT
0907	337690	PERNO	PIN	ZAPFEN	PIVOT
0908	460029	PIEDE	FOOT	FUSS	PIED
0909	354534	TUBO	PIPE	ROHR	TUYAU





0903	3-00365	VALVOLA	VALVE	VENTIL	VANNE
0904	3-00181	SILENZIATORE	SILENCER	SCHALLDAEMPFER	SILENCIEUX
1100	3-00460	RACCORDO	CONNECTOR	ANSCHLUSS	RACCORD
1101	3-00317	VALVOLA	VALVE	VENTIL	VANNE
1102	3-00341	FILTRO	FILTER	FILTER	FILTRE
1103	3-00488	MANOMETRO	PRESSURE GAUGE	DRUCKMESSER	MANOMETRE
1104	3-00086	GIUNTO	COUPLING	KUPPLUNG	ACCOUPLEMENT
1105	3-00257	GIUNTO	COUPLING	KUPPLUNG	ACCOUPLEMENT
1106	333683	STAFFA	BRACKET	KLAUE	ETRIER
1107	3-00231	RAC.PNEUMATICO	PNEUMATIC CON.	PNEUM.ANSCHE.	RAC.PNEUMATIQUE
1108	3-00219	RACCORDO	CONNECTOR	ANSCHLUSS	RACCORD
1109	3-00182	SILENZIATORE	SILENCER	SCHALLDAEMPFER	SILENCIEUX
1110	246426	RACCORDO	CONNECTOR	ANSCHLUSS	RACCORD
1111	1-04283	TUBO	PIPE	ROHR	TUYAU

Il disegno è realizzato con tutti i particolari ma solo quelli codificati sono forniti come ricambi. L'Azienda si riserva la facoltà di apportare modifiche senza preavviso.



Via per Carpi, n°9 - 42015 Correggio (RE) ITALY  
Tel. ++39 0522 639111 - Fax ++39 0522 639150  
[www.corgi.com](http://www.corgi.com) - [info@corgi.com](mailto:info@corgi.com)

The drawing shows all parts but only the coded parts are supplied as spares. The Company reserves the right to make modifications without prior notice.

**COMIM** - Cod. 4-105226C - I 108