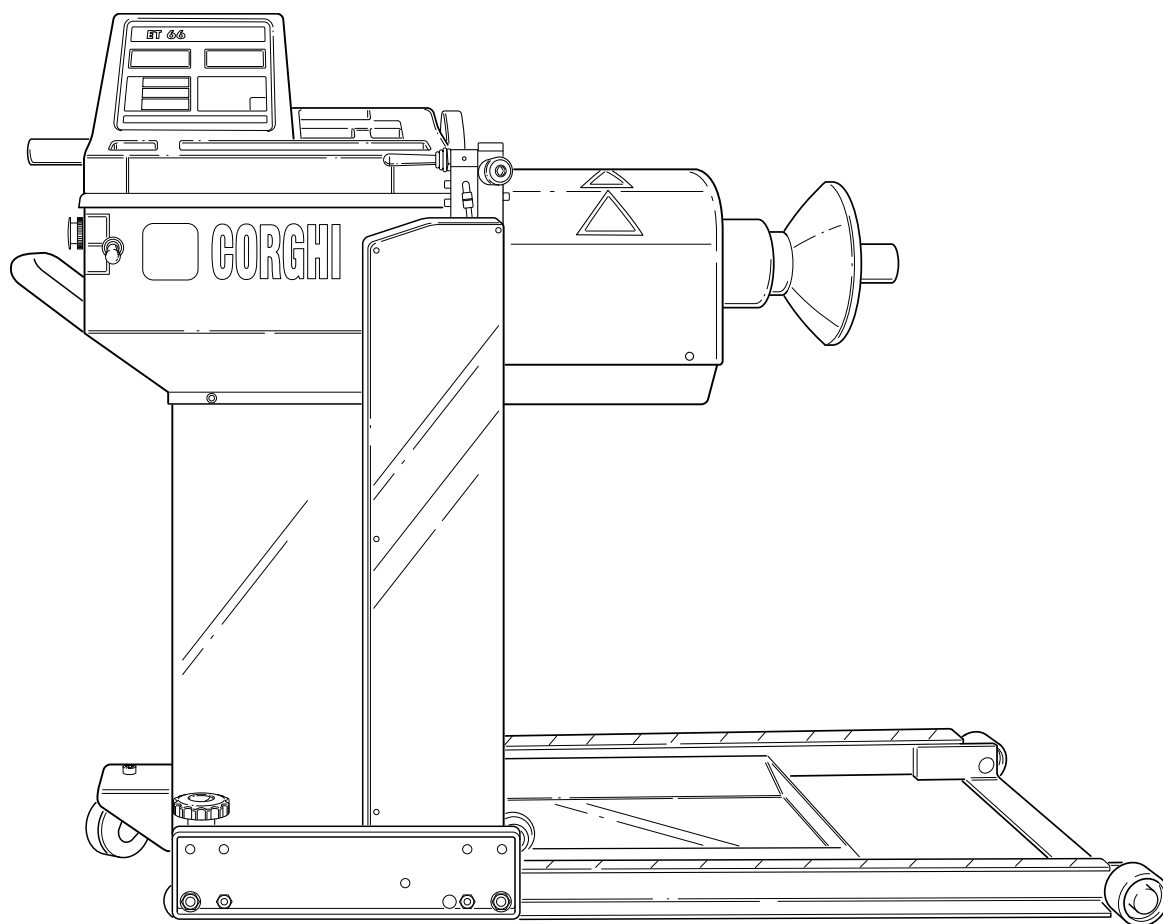


Questo libretto non autorizza l'utente ad intervenire sulle macchine ad esclusione di quanto esplicitamente descritto nel Manuale d'uso, ma consente all'utente di fornire informazioni precise all'Assistenza tecnica, al fine di ridurre i tempi di intervento.

ET 66 ET 66 M

The "Spare parts" booklet does not authorize the user to carry out work on the machine unless expressly specified in the instruction manual, but does enable him to provide accurate information to the assistance service in order to reduce downtime.

PEZZI DI RICAMBIO SPARE PARTS LIST ERSATZTEILLISTE PIECES DE RECHANGE



Code

445609A

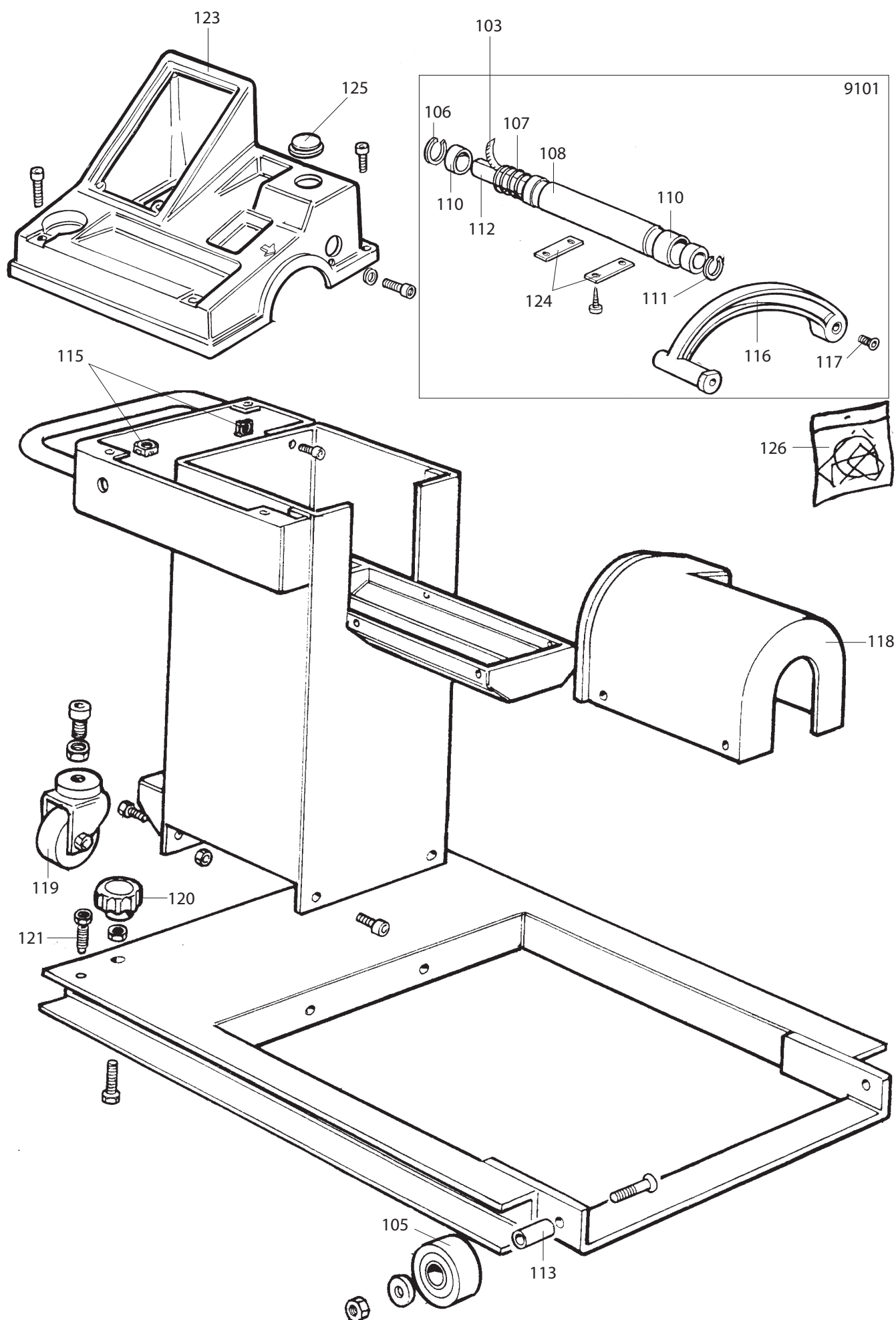
Production from

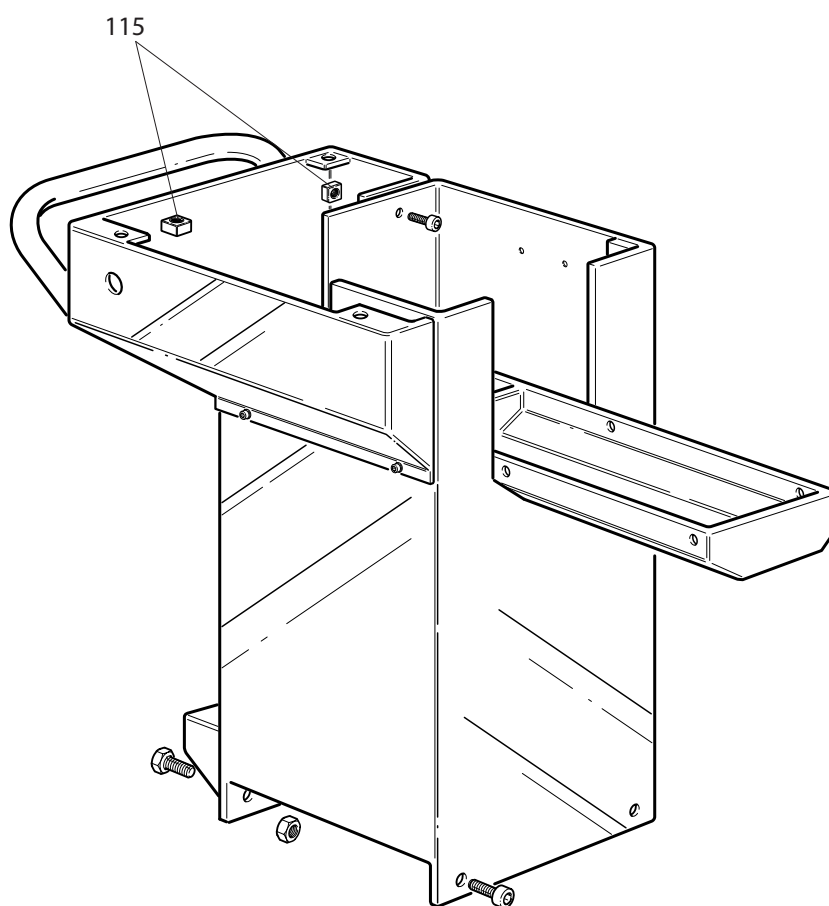
11 / 07

Der Katalog Ersatzteile stellt keine Genehmigung zu eigenmächtigen Eingriffen dar (mit Ausnahme jener im Handbuch beschriebenen), sondern er soll den Anwender in die Lage versetzen, dem technischen Service präzise Informationen zu liefern, um die Reparaturzeiten zu verkürzen.



Le livret "Pièces de rechange", n'autorise pas l'utilisateur à intervenir sur les machines, sauf pour tout ce qui est clairement décrit dans le manuel d'utilisation, mais lui permet de fournir des informations précises à l'assistance technique, afin de diminuer les délais d'intervention.

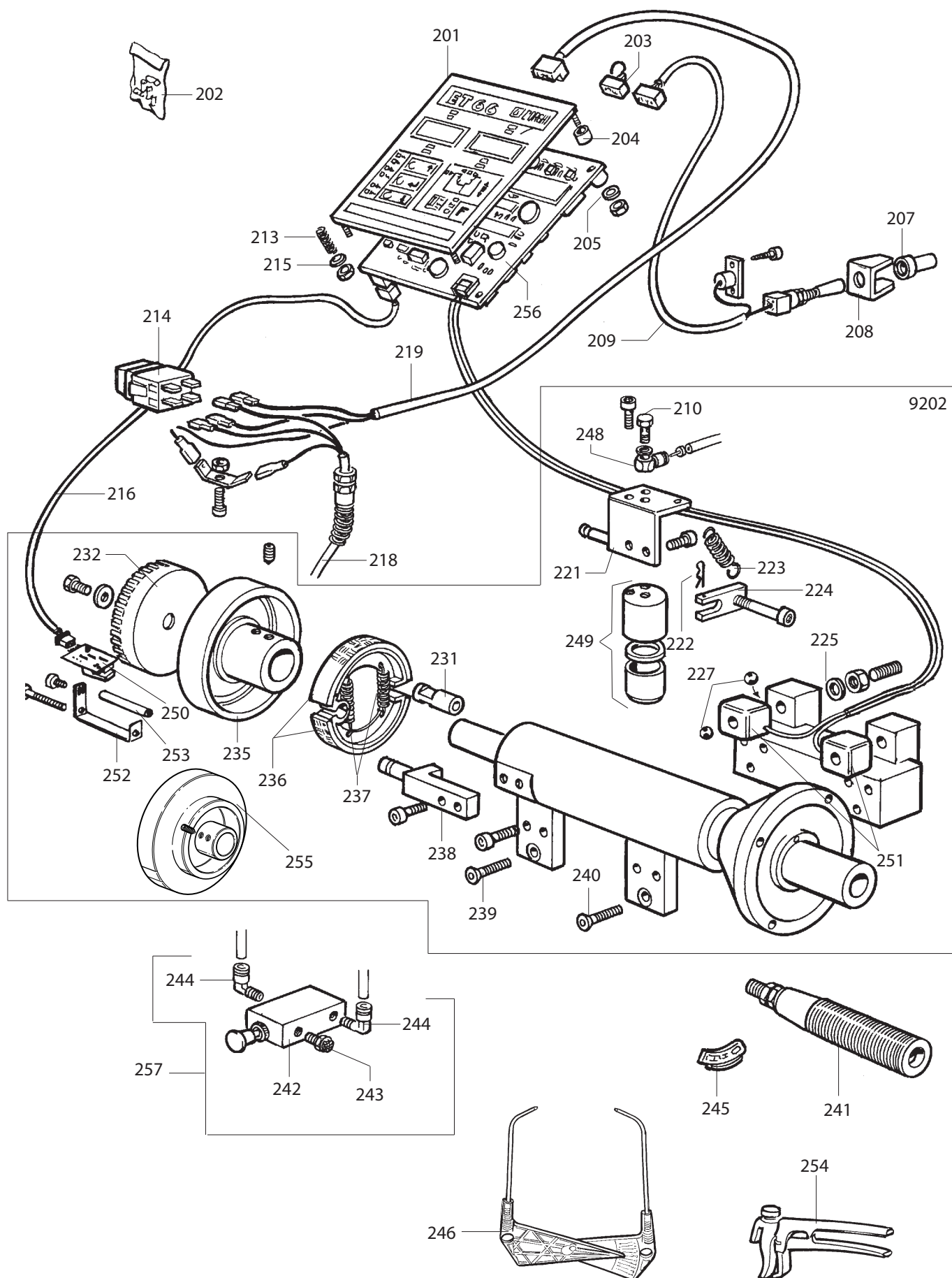





| | | | | | |
|------|--------|------------|------------|---------------|------------|
| 0103 | 439488 | TARGHETTA | DATA PLATE | TYPENSCHILD | PLAQUETTE |
| 0105 | 344955 | RUOTA | WHEEL | RAD | ROUE |
| 0113 | 344957 | PERNO | PIN | ZAPFEN | PIVOT |
| 0115 | 425107 | DADO | NUT | MUTTER | ECROU |
| 0118 | 440244 | PROTEZIONE | SHIELD | ABDECKUNG | PROTECTION |
| 0119 | 444946 | RUOTA | WHEEL | RAD | ROUE |
| 0120 | 432480 | MANOPOLA | KNOB | BALLENGRIFF | BOUTON |
| 0121 | 421227 | GRANO | GRUB SCREW | MADENSCHRAUBE | ERGOT |

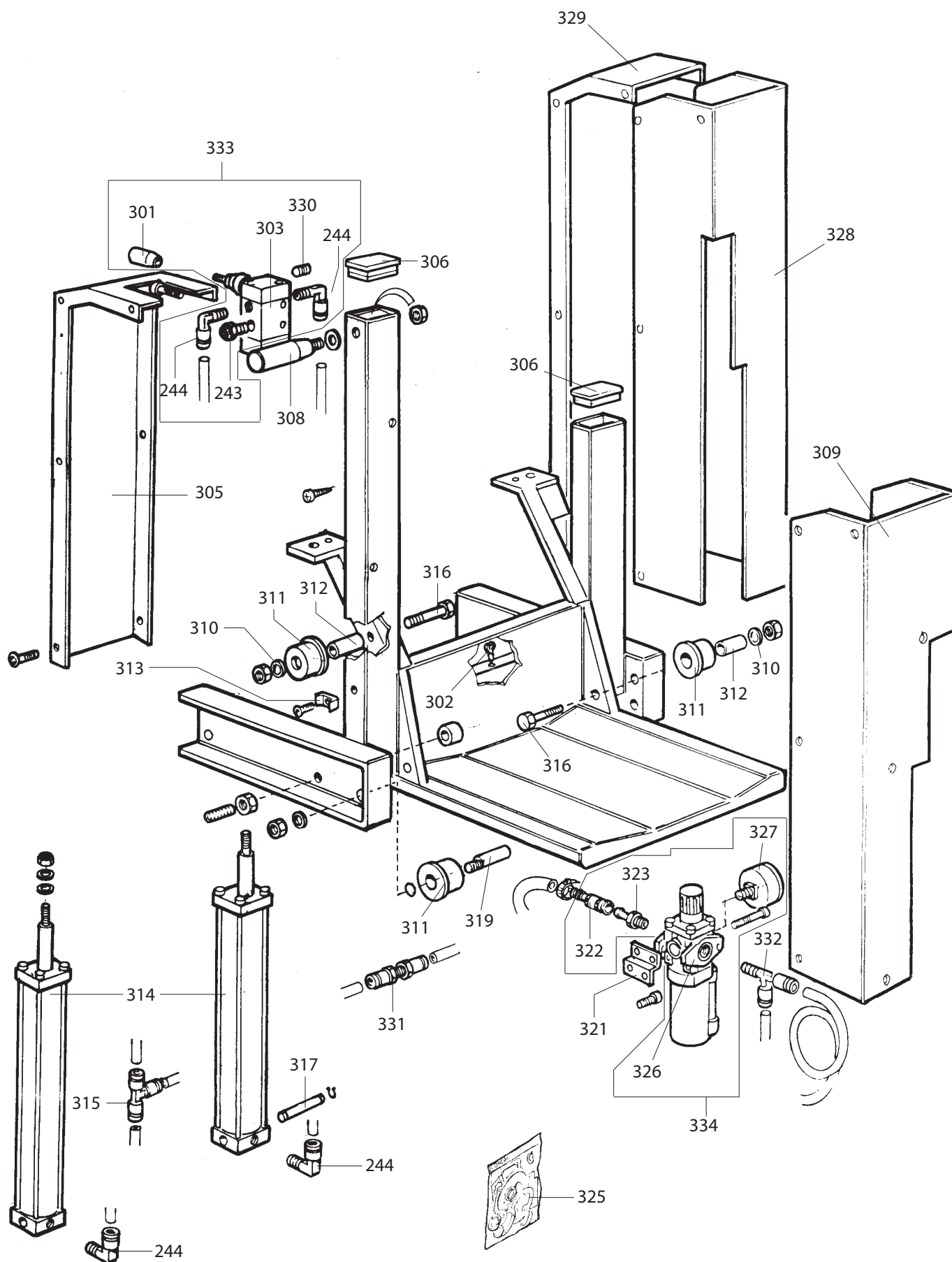
| | | | | | |
|------|---------|------------|---------------|------------|-----------|
| 9101 | 244916 | RILEVATORE | SIGNAL TRACER | AUFNEHMER | MESUREUR |
| 0106 | 439465 | ANELLO | RING | RING | ANNEAU |
| 0107 | 439460 | MOLLA | SPRING | FEDER | RESSORT |
| 0108 | 344932 | TUBO | PIPE | ROHR | TUYAU |
| 0110 | 439461 | BOCCOLA | BUSHING | LAGER | DOUILLE |
| 0111 | 439466 | ANELLO | RING | RING | ANNEAU |
| 0112 | 344933 | ASTA | SHAFT | STANGE | BARRE |
| 0116 | 443596 | LEVA | LEVER | HEBEL | LEVIER |
| 0117 | 2-02147 | VITE | SCREW | SCHRAUBE | VIS |
| 0124 | 347998 | PIASTRINA | PLATE | PLAETTCHEN | PLAQUETTE |


| | | | | | |
|------|--------|-----------|------------|-------------|-----------|
| 0123 | 443592 | COPERCHIO | LID | DECKEL | COUVERCLE |
| 0125 | 448000 | TAPPO | PLUG | STOPFEN | BOUCHON |
| 0126 | 251504 | TARGHETTA | DATA PLATE | TYPENSCHILD | PLAQUETTE |



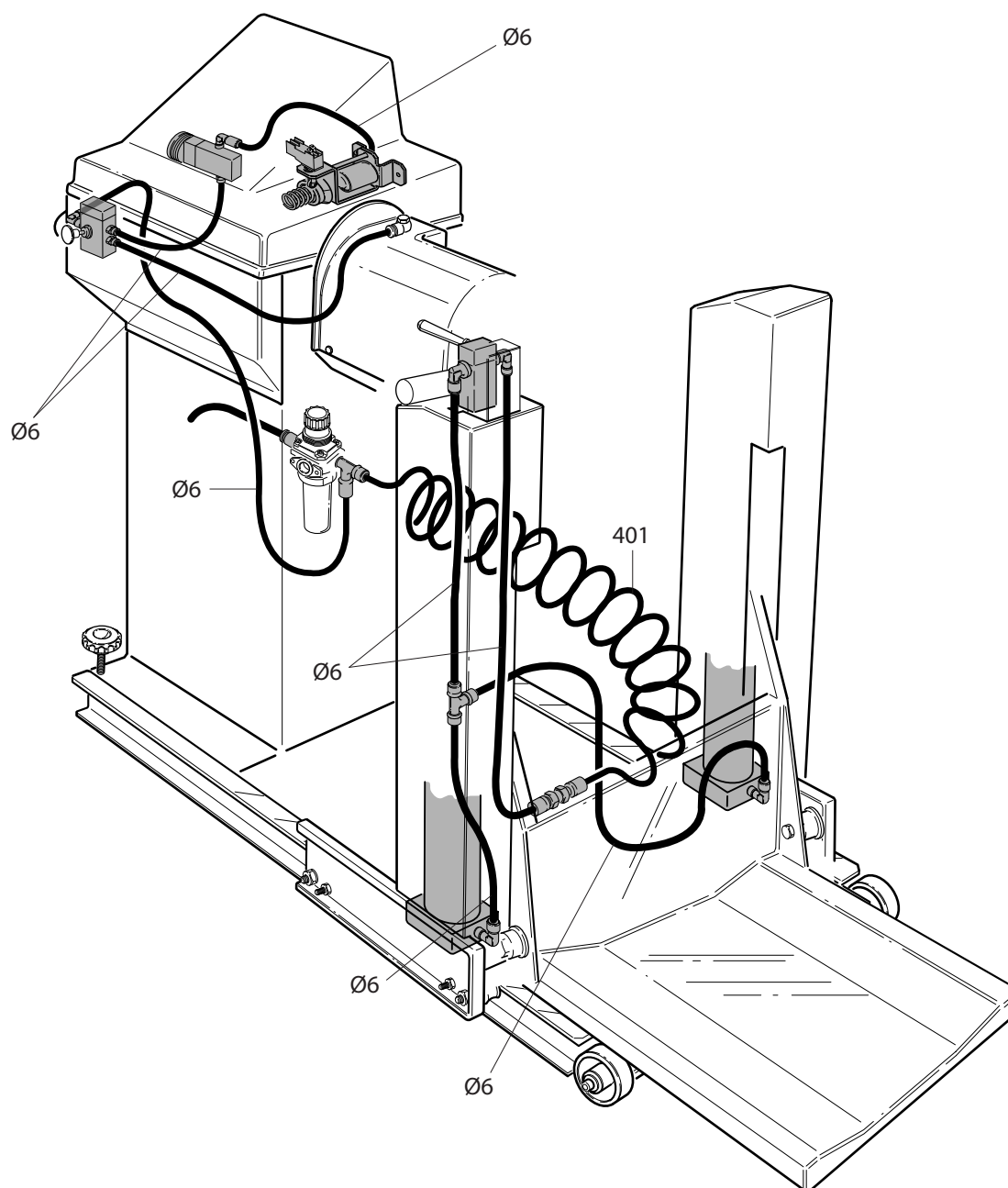
| | | | | | |
|------|--------|---------------|------------|----------------------|---------------|
| 0201 | 444834 | TARGHETTA | DATA PLATE | TYPENSCHILD | PLAQUETTE |
| 0202 | 216039 | FUSIBILI 1A | FUSE 1A | SICHRUNGSBEUTEL 1A | FUSIBLES 1A |
| 0202 | 244869 | FUSIBILI 0,1A | FUSE 0,1A | SICHRUNGSBEUTEL 0,1A | FUSIBLES 0,1A |

|  | | ET 66 - ET 66 M | Fig. B | 11 / 07 | GRUPPO OSCILLANTE |
|--|----------|----------------------|----------------|---------------------|-------------------|
| 0203 | 243657 | CONNETTORE | CONNECTOR | VERBINDER | CONNECTEUR |
| 0204 | 438996 | DISTANZIALE | SPACER | ABSTANDSSTUECK | ENTRETOISE |
| 0205 | 2-01850 | RONDELLA | WASHER | UNTERLEGSCHIEBE | RONDELLE |
| 0207 | 437517 | CAPPUCCIO | CAP | KAPUZE | CAPUCHON |
| 0208 | 340747 | PROTEZIONE | SHIELD | ABDECKUNG | PROTECTION |
| 0209 | 243625 | CAVO | CABLE | KABEL | CABLE |
| 0210 | 3-00070 | VITE | SCREW | SCHRAUBE | VIS |
| 0213 | 417907 | MOLLA | SPRING | FEDER | RESSORT |
| 0214 | 433848 | INTERRUTTORE | SWITCH | SCHALTER | INTERRUPTEUR |
| 0215 | 443597 | NOTTOLINO | PAWL | KLINKE | CLIQUET |
| 0216 | 443613 | CAVO | CABLE | KABEL | CABLE |
| 0218 | 435392 | CAVO | CABLE | KABEL | CABLE |
| 0219 | 243612 | CAVO | CABLE | KABEL | CABLE |
| 9202 | 251573 | Gr. OSCILLANTE ET66 | ET66 SUPPORT | ET66 LAGER | SUPPORT ET66 |
| 9202 | 253105 | Gr. OSCILLANTE ET66M | ET66M SUPPORT | ET66M LAGER | SUPPORT ET66M |
| 0221 | 239273 | SUPPORTO | SUPPORT | LAGER | SUPPORT |
| 0222 | 439493 | MOLLA | SPRING | FEDER | RESSORT |
| 0223 | 432335 | MOLLA | SPRING | FEDER | RESSORT |
| 0224 | 241386 | LEVA | LEVER | HEBEL | LEVIER |
| 0225 | 424993 | MOLLA | SPRING | FEDER | RESSORT |
| 0227 | 2-00243 | SFERA | BALL | KUGEL | BILLE |
| 0231 | 339271 | BLOCCETTO | BLOCK | BLOCK | BLOC |
| 0232 | 423170 | DISCO | DISK | SCHEIBE | DISQUE |
| 0235 | 344913 | RUOTA ET66 | WHEEL ET66 | RAD ET66 | ROUE ET66 |
| 0236 | 439495 | CEPPO FRENO | BRAKE SHOE | BREMSBACKE | MACHOIRE |
| 0237 | 439494 | MOLLA | SPRING | FEDER | RESSORT |
| 0238 | 339269 | ATTACCO | ADAPTOR | HALTERUNG | ATTAQUE |
| 0239 | 339430 | VITE | SCREW | SCHRAUBE | VIS |
| 0240 | 339431 | VITE | SCREW | SCHRAUBE | VIS |
| 0248 | 246472 | RACCORDO | CONNECTOR | ANSCHLUSS | RACCORD |
| 0249 | 244969 | CILINDRO | CYLINDER | ZYLINDER | CYLINDRE |
| 0250 | 249280 | SCHEDA ELETTRON. | P.C.BOARD | ELEKTR.PLATINE | FICHE ELECTR. |
| 0251 | 246137 | COPPIA DI PICK UP | PICK UP PAIR | PICK UP-PAAR | PAIRE DE CAPTEUR |
| 0252 | 351574 | SUPPORTO | SUPPORT | LAGER | SUPPORT |
| 0253 | 351586 | DISTANZIALE | SPACER | ABSTANDSSTUECK | ENTRETOISE |
| 0255 | 353104 | PULEGIA ET66M | PULLEY ET66M | RIEMENSCHIEBE ET66M | POULIE ET66M |
| 0241 | 238304 | MOZZO | HUB | NABE | MOYEU |
| 0242 | 444931 | VALVOLA | VALVE | VENTIL | VANNE |
| 0243 | 3-00181 | SILENZIATORE | SILENCER | SCHALLDAEMPFER | SILENCIEUX |
| 0244 | 3-00217 | RACCORDO | CONNECTOR | ANSCHLUSS | RACCORD |
| 0245 | 430573 | PESO 100g | WEIGHT 100g | GEWICHT 100g | POIDS 100g |
| 0245 | 439516 | PESO 300g | WEIGHT 300g | GEWICHT 300g | POIDS 300g |
| 0246 | 239556 | CALIBRO | CALIPER | LEHRE | CALIBRE |
| 0254 | 203841 | PINZA | PLIERS | ZANGE | PINCE |
| 0256 | 5-190749 | SCHEDA 230V 1ph | BOARD 230V 1ph | PLATINE 230V 1ph | FICHE 230V 1ph |
| 0256 | 5-190750 | SCHEDA 115V 1ph | BOARD 115V 1ph | PLATINE 115V 1ph | FICHE 115V 1ph |
| 0257 | 244930 | VALVOLA ET66 | VALVE | | |

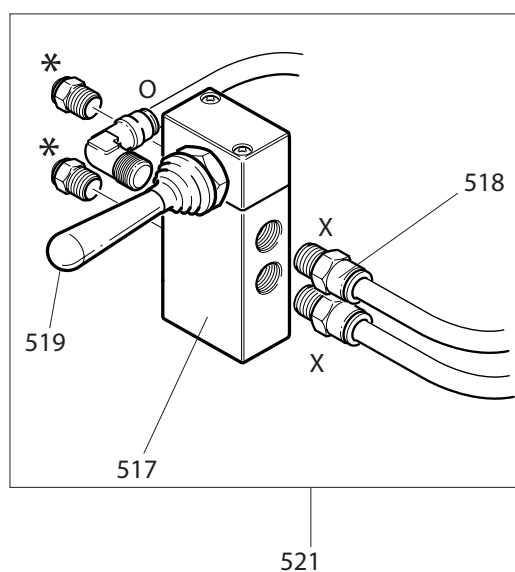
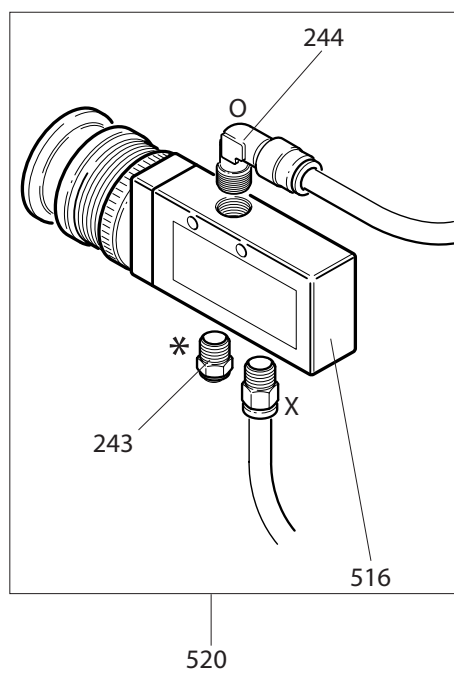
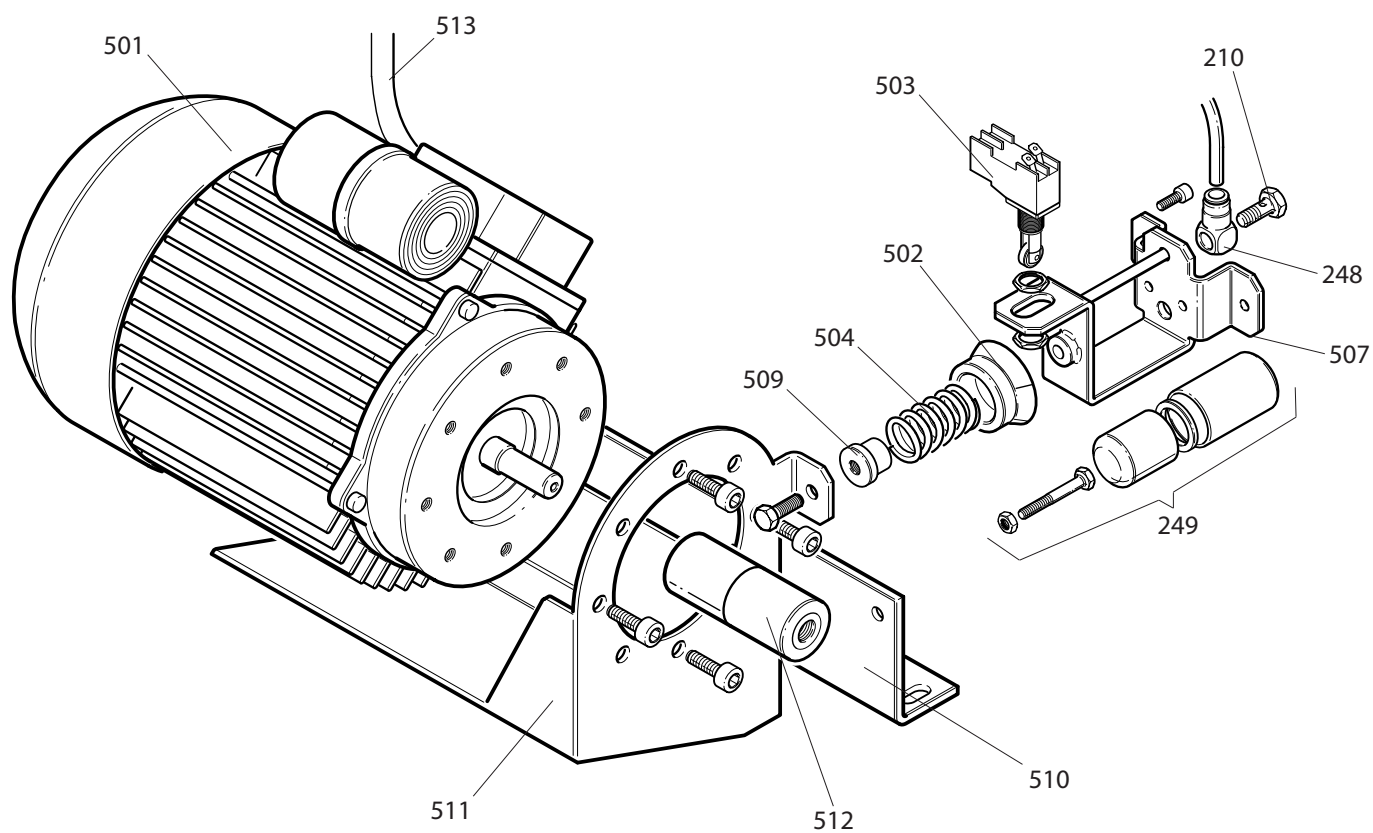



| | | | | |
|--|-----------------|--------|----------|-------------|
|  CORCHI | ET 66 - ET 66 M | Fig. C | 11b / 96 | SOLLEVATORE |
|--|-----------------|--------|----------|-------------|

| | | | | | |
|------|---------|-----------------|----------------|-----------------|--------------|
| 0243 | 3-00181 | SILENZIATORE | SILENCER | SCHALLDAEMPFER | SILENCIEUX |
| 0244 | 3-00217 | RACCORDO | CONNECTOR | ANSCHLUSS | RACCORD |
| 0301 | 440585 | MANOPOLA | KNOB | BALLENGRIFF | BOUTON |
| 0302 | 445039 | COLONNETTA | STUD | SCHRAUBENBOLZEN | COLONNETTE |
| 0303 | 3-00371 | VALVOLA | VALVE | VENTIL | VANNE |
| 0305 | 344941 | COPERCHIO | LID | DECKEL | COUVERCLE |
| 0306 | 445031 | TAPPO | PLUG | STOPFEN | BOUCHON |
| 0308 | 444342 | MANOPOLA | KNOB | BALLENGRIFF | BOUTON |
| 0309 | 344940 | CARTER | CASING | GEHAUSE | CARTER |
| 0310 | 345032 | RONDELLA | WASHER | UNTERLEGSCHIEBE | RONDELLE |
| 0311 | 244938 | ROTELLA | WHEEL | RAEDCHEN | ROULETTE |
| 0312 | 344998 | DISTANZIALE | SPACER | ABSTANDSSTUECK | ENTRETOISE |
| 0313 | 424936 | BASETTA | BASE | KLEMMENBRETT | PETITE BASE |
| 0314 | 244995 | CILINDRO | CYLINDER | ZYLINDER | CYLINDRE |
| 0315 | 3-00024 | RACCORDO | CONNECTOR | ANSCHLUSS | RACCORD |
| 0316 | 344999 | PERNO | PIN | ZAPFEN | PIVOT |
| 0317 | 344907 | PERNO | PIN | ZAPFEN | PIVOT |
| 0319 | 344996 | PERNO | PIN | ZAPFEN | PIVOT |
| 0321 | 333683 | STAFFA | BRACKET | KLAUE | ETRIER |
| 0322 | 3-00257 | GIUNTO | COUPLING | KUPPLUNG | ACCOUPLEMENT |
| 0323 | 3-00086 | GIUNTO | COUPLING | KUPPLUNG | ACCOUPLEMENT |
| 0325 | 245486 | KIT GUARNIZIONI | SEALS KIT | DICHTUNGSATZ | KIT JOINTS |
| 0326 | 3-00341 | FILTRO | FILTER | FILTER | FILTRE |
| 0327 | 3-00488 | MANOMETRO | PRESSURE GAUGE | DRUCKMESSER | MANOMETRE |
| 0328 | 346480 | CARTER | CASING | GEHAUSE | CARTER |
| 0329 | 346594 | COPERCHIO | LID | DECKEL | COUVERCLE |
| 0330 | 3-00089 | TAPPO | PLUG | STOPFEN | BOUCHON |
| 0331 | 3-00017 | RACCORDO | CONNECTOR | ANSCHLUSS | RACCORD |
| 0332 | 3-00065 | RACCORDO | CONNECTOR | ANSCHLUSS | RACCORD |
| 0333 | 244929 | VALVOLA | VALVE | VENTIL | VANNE |
| 0334 | 245244 | FILTRO cpl. | FILTER KIT | | |



| | | | | | |
|------|---------|------|------|------|-------|
| Ø6 | 1-01684 | TUBO | PIPE | ROHR | TUYAU |
| 0401 | 440016 | TUBO | PIPE | ROHR | TUYAU |



| | | | | |
|--|---------|--------|----------|------------------|
|  CORCHI | ET 66 M | Fig. E | 09b / 97 | MOTORE + VALVOLE |
|--|---------|--------|----------|------------------|

| | | | | | |
|------|---------|-----------------|-------------|----------------|-------------------|
| 0210 | 3-00070 | VITE | SCREW | SCHRAUBE | VIS |
| 0243 | 3-00181 | SILENZIATORE | SILENCER | SCHALLDAEMPFER | SILENCIEUX |
| 0244 | 3-00217 | RACCORDO | CONNECTOR | ANSCHLUSS | RACCORD |
| 0248 | 246472 | RACCORDO | CONNECTOR | ANSCHLUSS | RACCORD |
| 0249 | 244969 | CILINDRO | CYLINDER | ZYLINDER | CYLINDRE |
| 0501 | 453035 | MOTORE 230V | MOTOR 230V | MOTOR 230V | MOTEUR 230V |
| 0501 | 453036 | MOTORE 115V | MOTOR 115V | MOTOR 115V | MOTEUR 115V |
| 0502 | 353111 | PIATTELLO | PLATE | TELLERSCHEIBE | COUPELLE |
| 0503 | 453113 | MICROINTERRUTT. | MICROSWITCH | MIKROSCHALTER | MICROINTERRUPTEUR |
| 0504 | 453109 | MOLLA | SPRING | FEDER | RESSORT |
| 0507 | 253108 | SUPPORTO | SUPPORT | LAGER | SUPPORT |
| 0509 | 353112 | PIATTELLO | PLATE | TELLERSCHEIBE | COUPELLE |
| 0510 | 353110 | CERNIERA | HINGE | SCHARNIER | CHARNIERE |
| 0511 | 353107 | SUPPORTO | SUPPORT | LAGER | SUPPORT |
| 0512 | 253134 | RULLO | ROLLER | WALZE | ROULEAU |
| 0513 | 453218 | CAVO | CABLE | KABEL | CABLE |
| 0516 | 453025 | VALVOLA | VALVE | VENTIL | VANNE |
| 0517 | 453008 | VALVOLA | VALVE | VENTIL | VANNE |
| 0518 | 3-00461 | RACCORDO | CONNECTOR | ANSCHLUSS | RACCORD |
| 0519 | 440585 | IMPUGNATURA | HANDLE | | |
| 0520 | 253031 | VALVOLA | VALVE | VENTIL | VANNE |
| 0521 | 253030 | VALVOLA FRENO | VALVE | VENTIL | VANNE |

Il disegno è realizzato con tutti i particolari ma solo quelli codificati sono forniti come ricambi. L'Azienda si riserva la facoltà di apportare modifiche senza preavviso.



via per Carpi n°9 - 42015 Correggio (RE) ITALY
Tel. +39/522/639.111 - Fax +39/522/639.150
www.corgi.com - info@corgi.com

The drawing shows all parts but only the coded parts are supplied as spares. The Company reserves the right to make modifications without prior notice.