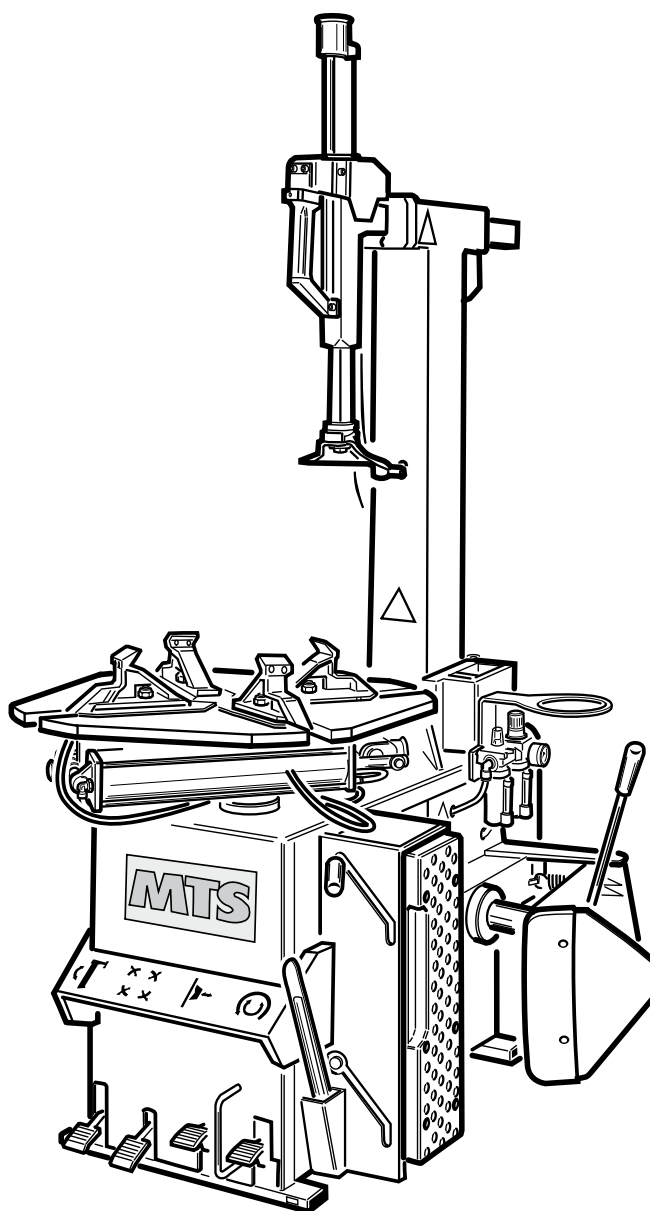


Questo libretto non autorizza l'utente ad intervenire sulle macchine ad esclusione di quanto esplicitamente descritto nel Manuale d'uso, ma consente all'utente di fornire informazioni precise all'Assistenza tecnica, al fine di ridurre i tempi di intervento.

MTS 40-20 MTS 40

The "Spare parts" booklet does not authorize the user to carry out work on the machine unless expressly specified in the instruction manual, but does enable him to provide accurate information to the assistance service in order to reduce downtime.

PEZZI DI RICAMBIO SPARE PARTS LIST ERSATZTEILLISTE PIECES DE RECHANGE



Code

4-I05238C

In produzione da
Production from
Herstellung ab
Production

12 / 2010

Der Katalog Ersatzteile stellt keine Genehmigung zu eigenmächtigen Eingriffen dar (mit Ausnahme jener im Handbuch beschriebenen), sondern er soll den Anwender in die Lage versetzen, dem technischen Service präzise Informationen zu liefern, um die Reparaturzeiten zu verkürzen.



Le livret "Pièces de rechange", n'autorise pas l'utilisateur à intervenir sur les machines, sauf pour tout ce qui est clairement décrit dans le manuel d'utilisation, mais lui permet de fournir des informations précises à l'assistance technique, afin de diminuer les délais d'intervention.

I

Sul presente documento sono stati indicati in grassetto i codici che sono variati rispetto a quelli riportati nella precedente versione del 04/10

En

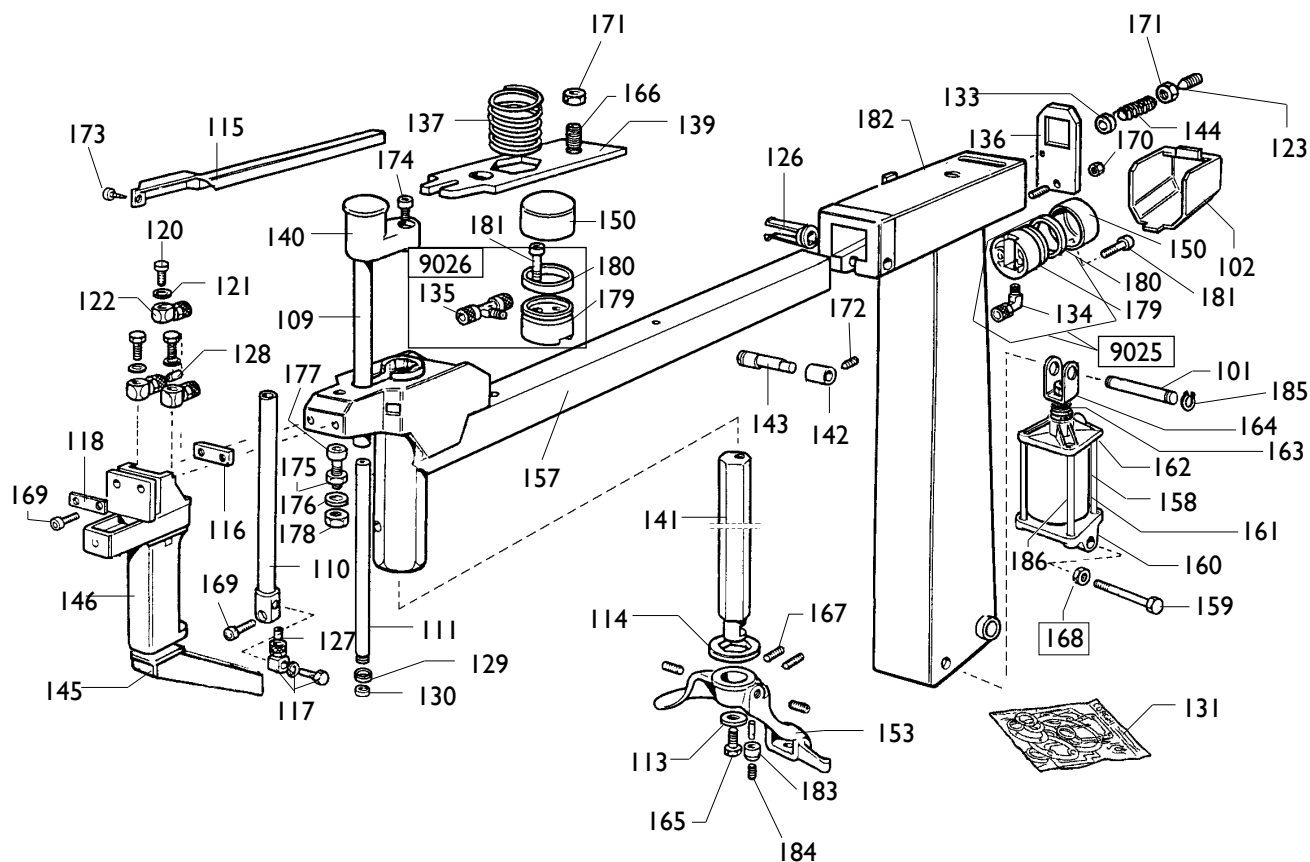
Codes that have changed from those given in the previous version dated 04/10 are indicated in bold type in this document

De

Die gegenüber der Vorgängerversion vom 04/10 geänderten Codes sind im vorliegenden Dokument fettgedruckt angegeben

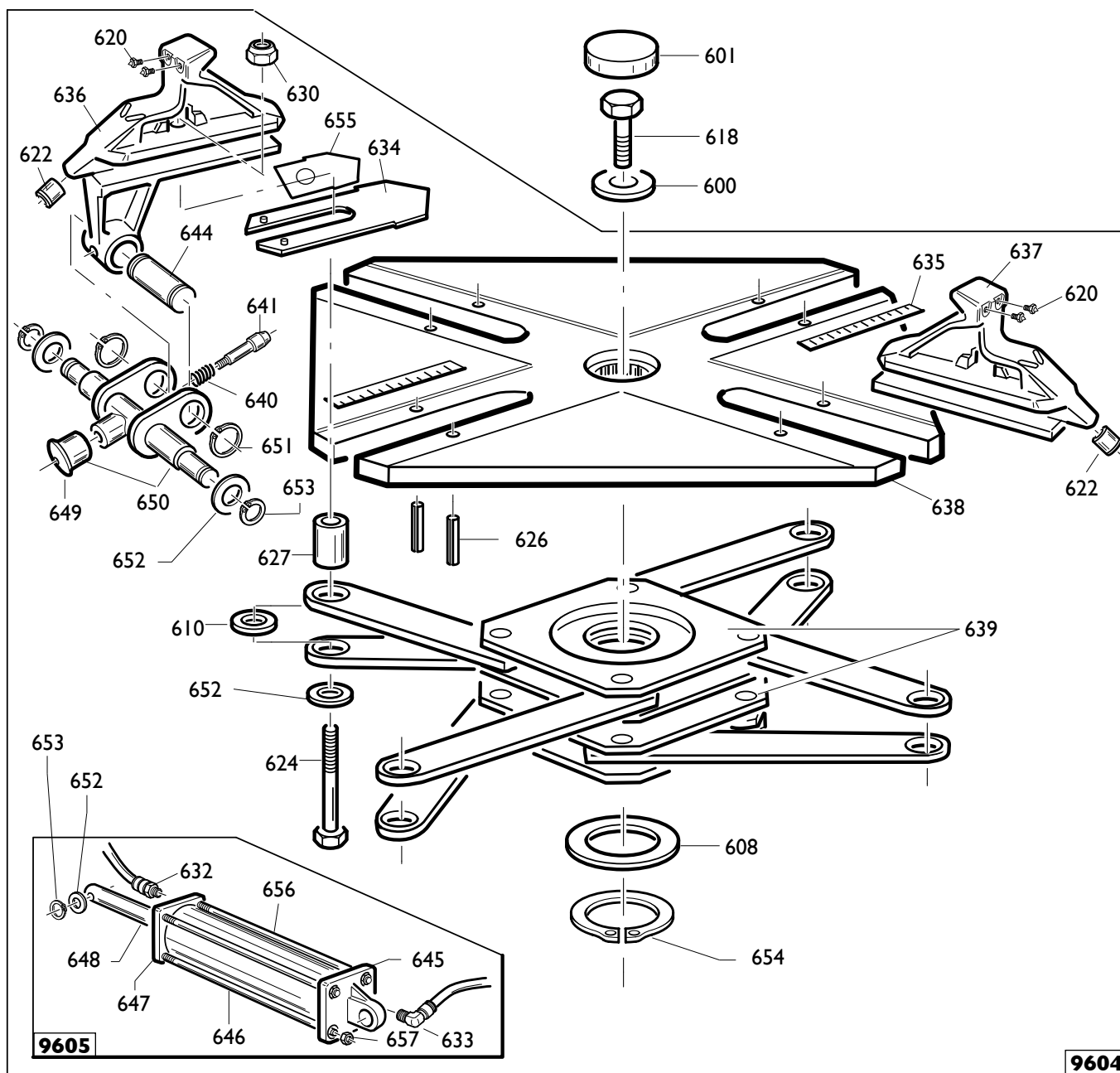
Fr

Ce document reporte en gras les codes qui ont été modifiés par rapport à ceux reportés dans la version précédente du mois de 04/10



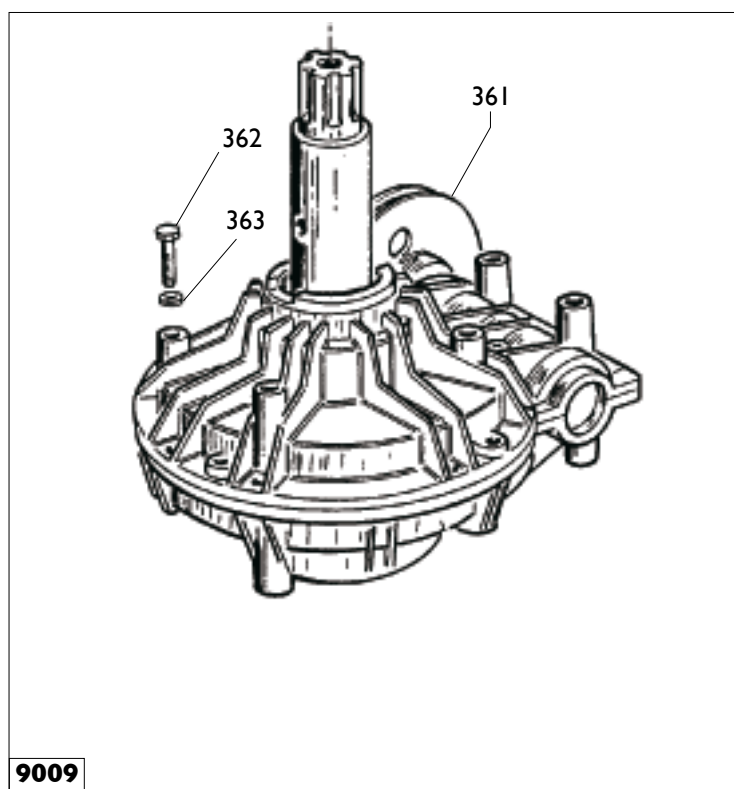
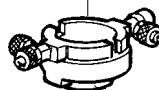
0101	326667	PERNO SUP.	PIN	ZAPFEN	PIVOT
0102	426773	PROTEZIONE	SHIELD	ABDECKUNG	PROTECTION
0109	338858	TUBO	PIPE	ROHR	TUYAU
0110	238856	SUPPORTO	SUPPORT	LAGER	SUPPORT
0111	338855	STELO	STEM	SCHAFT	TIGE
0113	350194	RONDELLA	WASHER	UNTERLEGSCHIEBE	RONDELLE
0114	428681	ANELLO	RING	RING	ANNEAU
0115	426763	GUIDA	GUIDE	FUEHRUNG	GLISSIERE
0116	327284	PIASTRINA	PLATE	PLAETTCHEN	PLAQUETTE
0117	5-102718	RACCORDO	CONNECTOR	ANSCHLUSS	RACCORD
0118	327283	PIASTRINA	PLATE	PLAETTCHEN	PLAQUETTE
0120	3-00070	VITE	SCREW	SCHRAUBE	VIS
0121	3-00452	RONDELLA	WASHER	UNTERLEGSCHIEBE	RONDELLE
0122	3-00079	ANELLO	RING	RING	ANNEAU
0123	341836	VITE M12	SCREW		
0126	431061	BOCCOLA	BUSHING	LAGER	DOUILLE
0127	327753	STROZZATORE D.0,65	THROTTLER	DROSSELKLAPPE	ETRANGLEUR
0128	331783	STROZZATORE D.1,25	THROTTLER	DROSSELKLAPPE	ETRANGLEUR
0129	427299	GUARNIZIONE	SEAL	DICHTUNG	JOINT
0130	432090	ANELLO	RING	RING	ANNEAU
0131	241484	KIT GUARNIZIONI	SEALS KIT	DICHTUNGSATZ	KIT JOINTS

		MTS 40-20 MTS 40	Fig. A	05C / 06	Braccio operante
0133	339803	BOCCOLA	BUSHING	LAGER	DOUILLE
9025	239805	PISTONE	PISTON	KOLBEN	PISTON
0134	3-00106	RACCORDO	CONNECTOR	ANSCHLUSS	RACCORD
9026	239806	PISTONE	PISTON	KOLBEN	PISTON
0135	3-00119	RACCORDO	CONNECTOR	ANSCHLUSS	RACCORD
0136	336142	PIASTRA	SLAB	PLATTE	PLAQUE
0137	440342	MOLLA	SPRING	FEDER	RESSORT
0139	340429	PIASTRA	SLAB	PLATTE	PLAQUE
0140	440428	POMOLO	KNOB	BALLENGRIFF	POMMEAU
0141	340430	BRACCIO	ARM	ARM	BRAS
0142	339782	RULLO	ROLLER	WALZE	ROULEAU
0143	339786	PERNO	PIN	ZAPFEN	PIVOT
0144	439787	MOLLA	SPRING	FEDER	RESSORT
0145	440692	PROLUNGA	EXTENSION CORD	VERLAENGERUNG	RALLONGE
0146	231744	RUBINETTO	COCK	HAHN	ROBINET
0150	326537	CILINDRO	CYLINDER	ZYLINDER	CYLINDRE
0153	258458	TORRETTA	HEAD	DREHKOPF	TOURELLE
0157	4-101588	BRACCIO	ARM	ARM	BRAS
0158	4-100825	CILINDRO	CYLINDER	ZYLINDER	CYLINDRE
0159	4-101715	PERNO INFERIORE	PIN		
0160	338299	FLANGIA POST.	FLANGE		
0161	4-100828	CAMICIA	LINER		
0162	338300	FLANGIA ANT.	FLANGE		
0163	4-100826	STELO	ROD		
0164	323350	CAVALLOTTO	SUPPORT		
0165	350197	VITE	SCREW		
0166	2-01291	VITE	SCREW		
0167	2-71357	VITE M12	SCREW		
0168	4-101716	DISTANZIALE	SPACER		
0169	3-00310	VITE M6	SCREW		
0170	2-00157	DADO M10	NUT		
0171	2-00158	DADO M12	NUT		
0172	2-00542	GRANO M6X6	NUT		
0173	2-00643	VITE 3.5X6.5	SCREW		
0174	2-00909	VITE M6X35	SCREW		
0175	431061	BOCCOLA GUIDA	BUSH		
0176	432090	ANELLO GUIDA	RING		
0177	2-00367	VITE M6X45	SCREW		
0178	2-00150	DADO M6	NUT		
0179	443077	PISTONE	PISTON		
0180	443078	GUARNIZIONE	GASKET		
0181	2-00314	VITE M6X40	SCREW		
0182	4-100799	PALO	ARM		
0183	322738	RULLINO	ROLLER		
0184	342051	PERNO	PIN		
0185	2-00821	SEEGER D.18	SEEGER		
0186	4-100827	TIRANTE	BOLT		



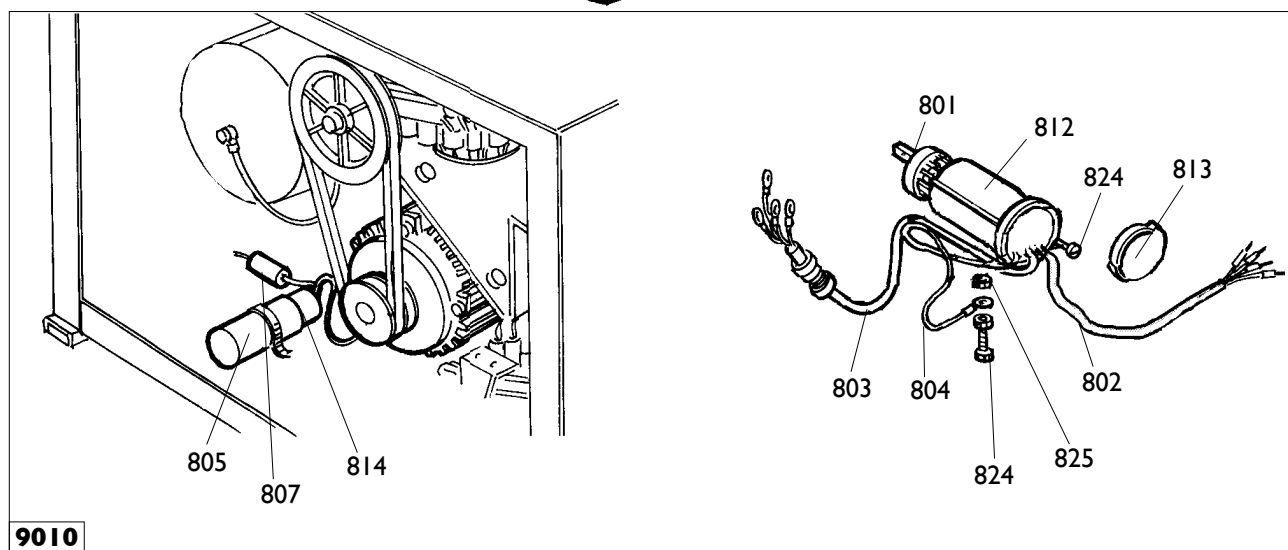
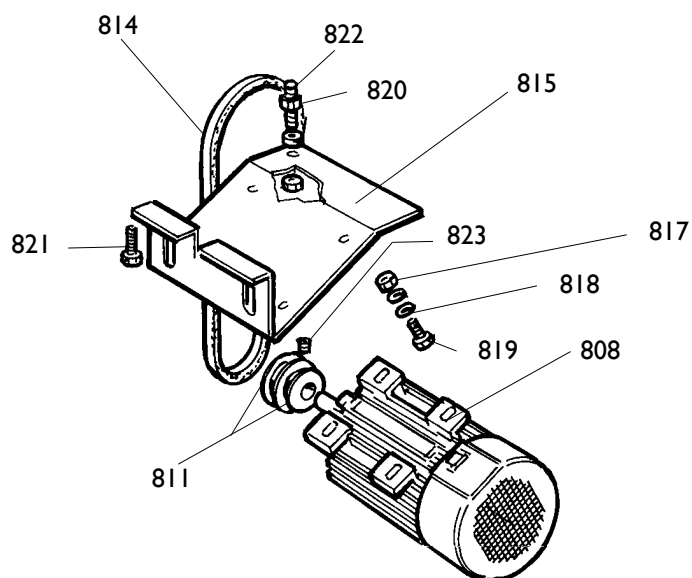
0600	323363	RONDELLA	WASHER	UNTERLEGSCHEIBE	RONDELLE
0601	426514	TAPPO	PLUG	STOPFEN	BOUCHON
0613	238548	KIT GUARNIZIONI	SEALS KIT	DICHTUNGSATZ	KIT JOINTS
0618	2-01216	VITE	SCREW	SCHRAUBE	VIS
9604	5-100507	AUTOCENTRANTE T.I.	TURNTABLE T.I.	SPANNFUTTER T.I.	PLAT.AUTOC. T.I.
0608	455082	RONDELLA	WASHER	UNTERLEGSCHEIBE	RONDELLE
0610	437964	RONDELLA	WASHER	UNTERLEGSCHEIBE	RONDELLE
0620	339146	PUNTE DI BLOCC.	LOCKING PEAK	FESTKLEMMENSPIITZE	POINTE DE BLOCAGE
0622	441100	RACCORDO	CONNECTOR	ANSCHLUSS	RACCORD
0624	2-02199	VITE	SCREW	SCHRAUBE	VIS
0626	2-01059	SPINA	PLUG	STECKER	FICHE
0627	353803	BOCCOLA	BUSHING	LAGER	DOUILLE
0630	2-02200	DADO	NUT	MUTTER	ECROU
0634	4-101441	COPRIASOLA	COVER	LOCHSTOPFEN	BOUCHON
0635	4-101456	TARGHETTA	DATA PLATE	TYPENSHIELD	PLAQUETTE
0636	5-100460	APPOGG. T.I. TRAINANTE	RIM SUPPORT T.I.	STUETZE T.I.	APPUI T.I.
0637	5-100459	APPOGG. T.I. TRAINATO.	RIM SUPPORT T.I.	STUETZE T.I.	APPUI T.I.
0638	4-101438	PIATTO	PLATE	TELLER	PLAT
0639	4-101651	FLANGIA	FLANGE	FLANSCH	FLASQUE
0640	4-101422	MOLLA	SPRING	FEDER	RESSORT
0641	4-101444	INNESTO	PIN	ZAPFEN	PIVOT
0644	4-101442	PERNO	PIN		
0649	4-109834	POMOLO	KNOB	BALLENGRIFF	POMMEAU
0650	5-103522	MANOVELLA+POMOLO	CRANK	KURBEL	MANIVELLE
0651	2-71587	SEEGER D.20	SEEGER		
0652	2.00214	RONDELLA 12	WASHER		
0653	2-00025	SEEGER D.12	SEEGER		
0654	2-01283	SEEGER D.65	SEEGER		
0655	4-101453	SLITTA	SLIDE		
9605	5-100455	CILINDRO DESTRO	CYLINDER RIGHT	ZYLINDER	CYLINDRE
9605	5-100454	CILINDRO SINISTRO	CYLINDER LEFT	ZYLINDER	CYLINDRE
0632	3-02045	RACCORDO	CONNECTOR	ANSCHLUSS	RACCORD
0633	3-02044	RACCORDO	CONNECTOR	ANSCHLUSS	RACCORD
0645	328573	FLANGIA POST.	FLANGE		
0646	353785	CAMICIA	LINER		
0647	328572	FLANGIA ANT.	FLANGE		
0648	4-101430	STELO	ROD		
0656	453791	TIRANTE	BOLT		
0657	2-01137	DADO M8	NUT		

707



	MTS 40-20 MTS 40	Fig. C	05B / 06	Riduttore
--	-----------------------------------	---------------	-----------------	------------------

9009	5-102647	RIDUTTORE		GEAR BOX	
9009	239555	RIDUTTORE pneumatico	GEAR BOX air		
9009	5-102648	RIDUTTORE DV		GEAR BOX DV	
0361	319073	PULEGGIA (pnem.)	PULLEY	RIEMENSCHIEBE	POULIE
0361	314344	PULEGGIA	PULLEY	RIEMENSCHIEBE	POULIE
0362	2-01046	VITE M10X55	SCREW		
0363	2-00213	RONDELLA M10	WASHER		
0707	228389	RACCORDO	CONNECTOR	ANSCHLUSS	RACCORD

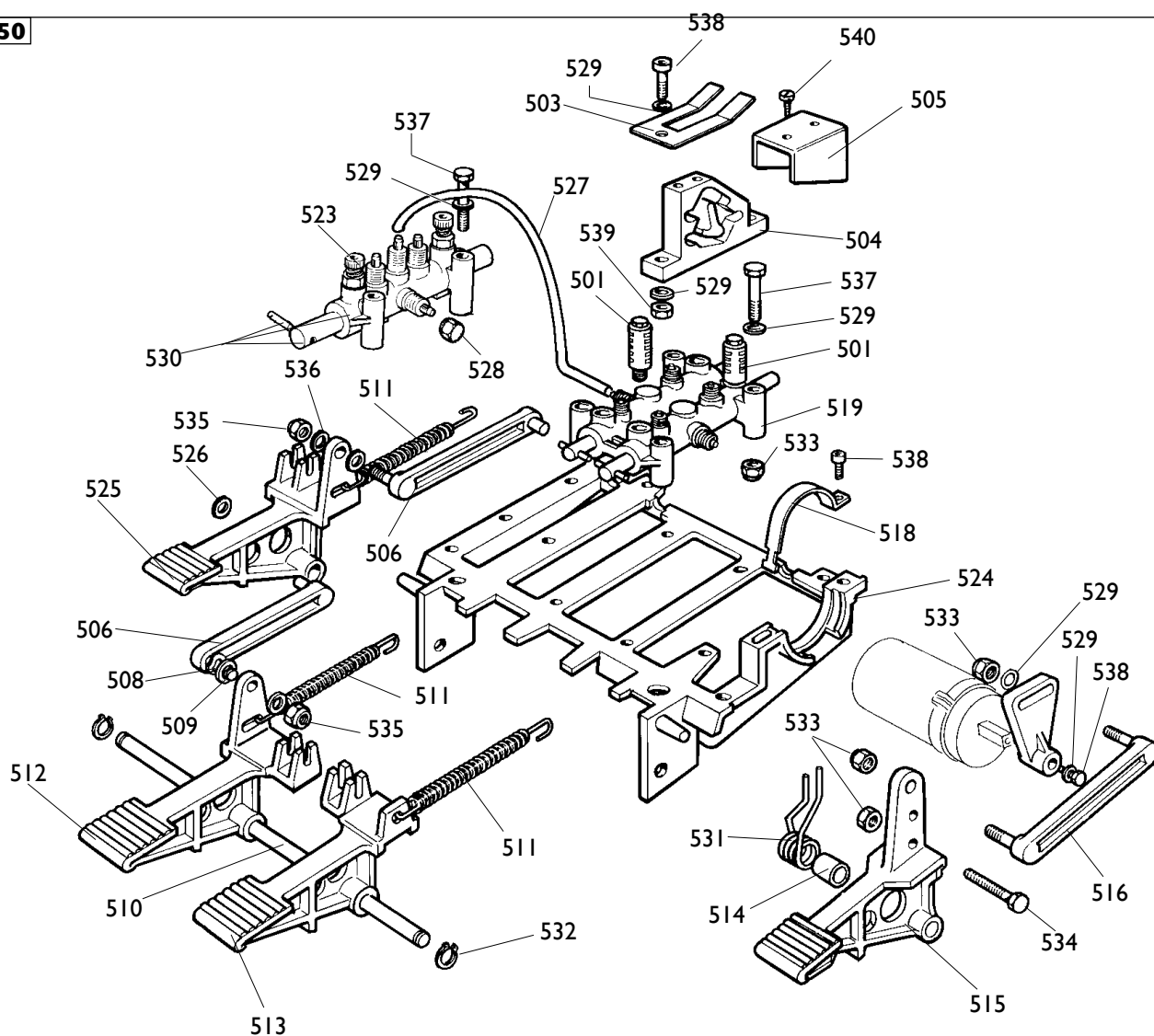


9010

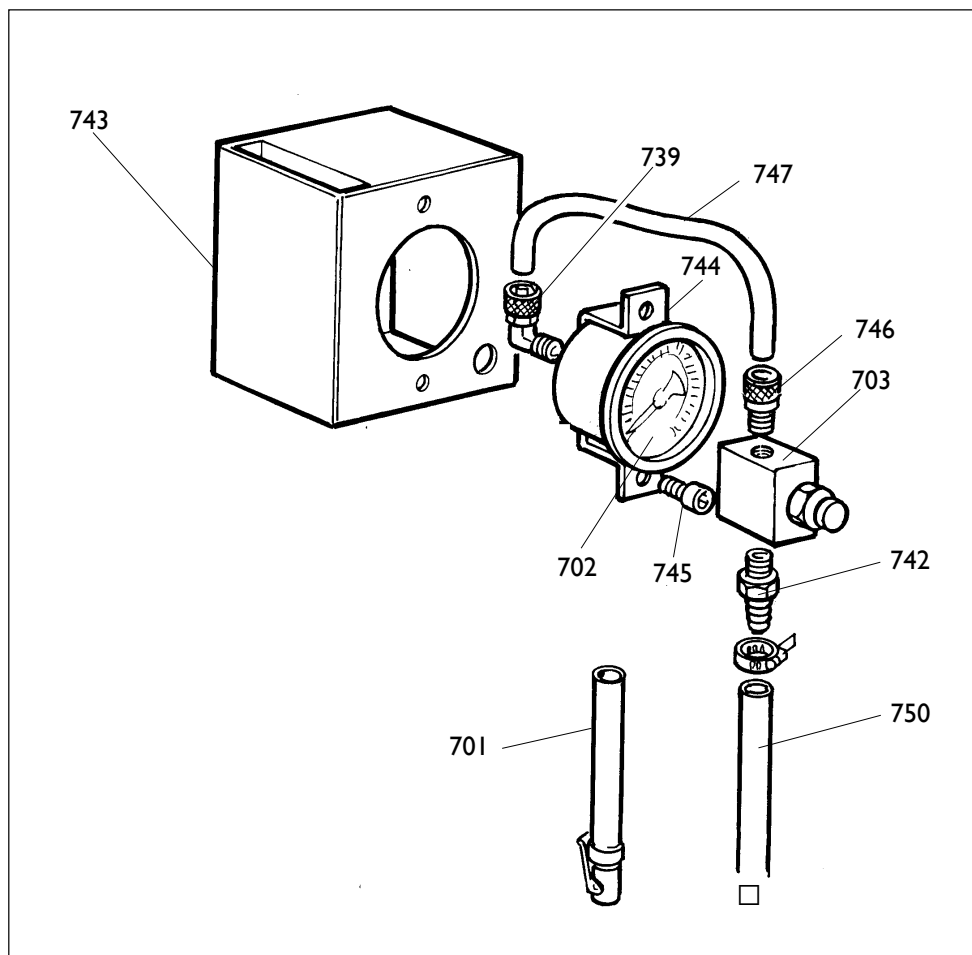
	MTS 40-20 MTS 40	Fig. D	I2 / I0	Impianto elettrico + motore
--	-----------------------------------	---------------	----------------	------------------------------------

		IMPIANTO ELETTRICO	ELECTRIC SYSTEM	ELEKTRISCHE ANLAGE	INST. ELECTRIQUE
9010	5-103989	110V 1ph	110V 1ph	110V 1ph	110V 1ph
0801	5-102741	INVERTITORE	REVERSER	RICHTUNGSWENDER	INVERSEUR
0802	447801	CAVO RETE	CABLE	KABEL	CABLE
0803	249590	CAVO MOTORE	CABLE	KABEL	CABLE
0804	249601	CAVALLOTTO	U-BOLT	BUEGELBOLZEN	CRAMPILLON
0805	430750	CAPPELOTTO	CAP NUT	ABSCHLUSSKAPPE	CAPUCHON
0807	430770	RESISTENZA	RESISTANCE	WIDERSTAND	RESISTANCE
0814	4-112706	CONDENSATORE 50mf	CAPACITOR	KONDENSATOR	CONDENSATEUR
9010	249881	230V 1ph	230V 1ph	230V 1ph	230V 1ph
0801	5-102742	INVERTITORE	REVERSER	RICHTUNGSWENDER	INVERSEUR
0802	447801	CAVO RETE	CABLE	KABEL	CABLE
0803	249590	CAVO MOTORE	CABLE	KABEL	CABLE
0804	249601	CAVALLOTTO	U-BOLT	BUEGELBOLZEN	CRAMPILLON
0805	414850	CAPPELOTTO	CAP NUT	ABSCHLUSSKAPPE	CAPUCHON
0807	430770	RESISTENZA	RESISTANCE	WIDERSTAND	RESISTANCE
0814	4-112706	CONDENSATORE 50mf	CAPACITOR	KONDENSATOR	CONDENSATEUR
9010	235574	3ph	3ph	3ph	3ph
0801	5-102742	INVERTITORE	REVERSER	RICHTUNGSWENDER	INVERSEUR
0802	447801	CAVO RETE	CABLE	KABEL	CABLE
0803	249590	CAVO MOTORE	CABLE	KABEL	CABLE
0804	249601	CAVALLOTTO	U-BOLT	BUEGELBOLZEN	CRAMPILLON
		MOTORE	MOTOR	MOTOR	MOTEUR
0808	422013	3ph 230/400V	3ph 230/400V	3ph 230/400V	3ph 230/400V
0808	425397	3ph 240/440V	3ph 240/440V	3ph 240/440V	3ph 240/440V
0808	449747	1ph 230V 50Hz	1ph 230V 50Hz	1ph 230V 50Hz	1ph 230V 50Hz
0808	449748	1ph 230V 60Hz	1ph 230V 60Hz	1ph 230V 60Hz	1ph 230V 60Hz
0808	4-112454	1ph 110V 60Hz	1ph 110V 60Hz	1ph 110V 60Hz	1ph 110V 60Hz
0811	331067	PULEGGIA	PULLEY	RIEMENSCHIEBE	POULIE
0812	432065	PROTEZIONE	SHIELD	ABDECKUNG	PROTECTION
0813	430991	COPERCHIO	LID	DECKEL	COUVERCLE
0815	334768	CULLA	CRADLE	WIEGE	BERCEAU
0816	3-00555	CINGHIA	BELT	RIEMEN	
0817	421349	DADO M8	NUT		
0818	339208	RONDELLA M8	WASHER		
0820	2-00152	DADO M10	NUT		
0821	2-00328	VITE M10X20	SCREW		
0822	455920	VITE SPEC M10X60	SCREW		
0823	2-01091	VITE M6X5	SCREW		
0824	2-00605	VITE M4X10	SCREW		
0825	2-00143	DADO M4	NUT		

9550



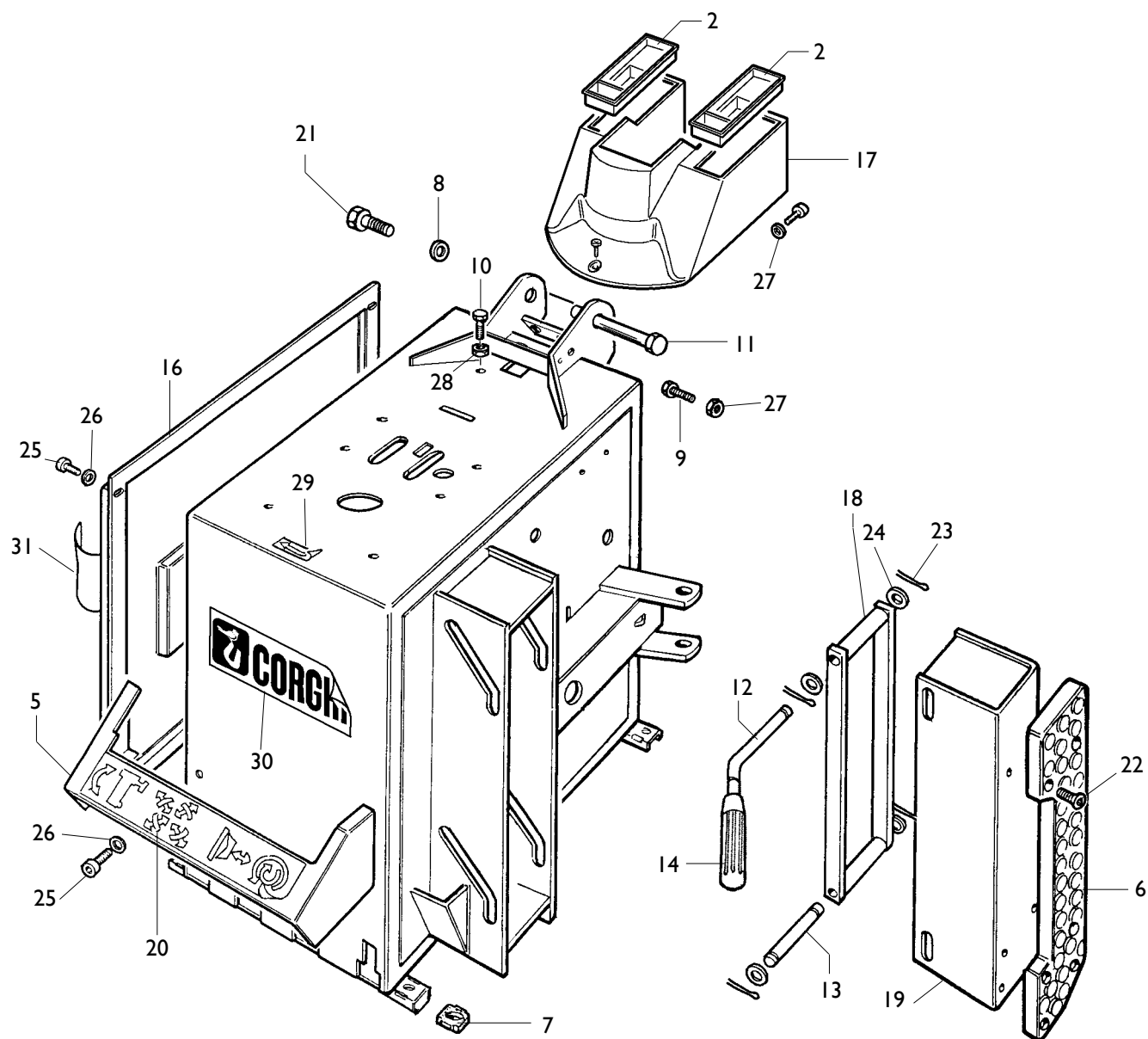
9550	233678	PEDALIERA	CONTROL PEDAL		
0501	3-00183	SILENZIATORE	SILENCER	SCHALLDAEMPFER	SILENCIEUX
0503	325019	BALESTRA	LEAF SPRING	BLATTFEDER	RESSORT A LAMES
0504	425020	CAMMA	CAM	NOCKEN	CAME
0505	325018	CAVALLOTTO	U-BOLT	BUEGELBOLZEN	CRAMPILLON
0506	425014	BIELLA	TRACE	PLEUELSTANGE	BIELLE
0508	2-02247	RONDELLA	WASHER	UNTERLEGSCHEIBE	RONDELLE
0509	309358	RONDELLA	WASHER	UNTERLEGSCHEIBE	RONDELLE
0510	325005	PERNO	PIN	ZAPFEN	PIVOT
0511	410628	MOLLA	SPRING	FEDER	RESSORT
0512	325031	PEDALE AUTOCENTR.	PEDAL	PEDAL	PEDALE
0513	325032	PEDALE STALL.	PEDAL	PEDAL	PEDALE
0514	325050	DISTANZIALE	SPACER	ABSTANDSSTUECK	ENTRETOISE
0515	5-102714	PEDALE INVERT.	PEDAL	PEDAL	PEDALE
0516	425010	BIELLA	TRACE	PLEUELSTANGE	BIELLE
0517	425027	LEVA	LEVER	HEBEL	LEVIER
0518	332495	CAVALLOTTO	U-BOLT	BUEGELBOLZEN	CRAMPILLON
0519	5-102739	RUBINETTO DOPPIO	COCK	HAHN	ROBINET
0521	316199	GHIERA	NUT	NUTMUTTER	BAGUE
0523	433675	REGOLATORE	REGULATOR	REGLER	REGULATEUR
0524	524273	SUPPORTO	SUPPORT	LAGER	SUPPORT
0525	325030	PEDALE ALZAPALO	PEDAL	PEDAL	PEDALE
0526	452011	BOCCOLA	BUSHING	LAGER	DOUILLE
0527	317610	TUBO	PIPE	ROHR	TUYAU
0528	383173	TAPPO	PLUG	STOPFEN	BOUCHON
0529	2-00211	RONDELLA D.6	WASHER		
0530	257137	RUBINETTO SINGOLO	COCK	HAHN	ROBINET
0531	4-109664	MOLLA	SPRING	FEDER	RESSORT
0532	2-00025	SEEGER D.12	SEEGER		
0533	2-01979	DADO M6	NUT M6		
0534	2-00366	VITE M6X40	SCREW		
0535	2-01137	DADO M8	NUT		
0536	2-00212	RONDELLA D.8	WASHER		
0537	2-00411	VITE M6X50	SCREW		
0538	2-00312	VITE M6X25	SCREW		
0539	2-00155	DADO M6	NUT		
0540	2-01272	VITE M2,9X9,5	SCREW		



	MTS 40-20 MTS 40	Fig. G	05B / 06	Gruppo manometro + gruppo valvola gonfiaggio
--	-----------------------------	---------------	-----------------	---

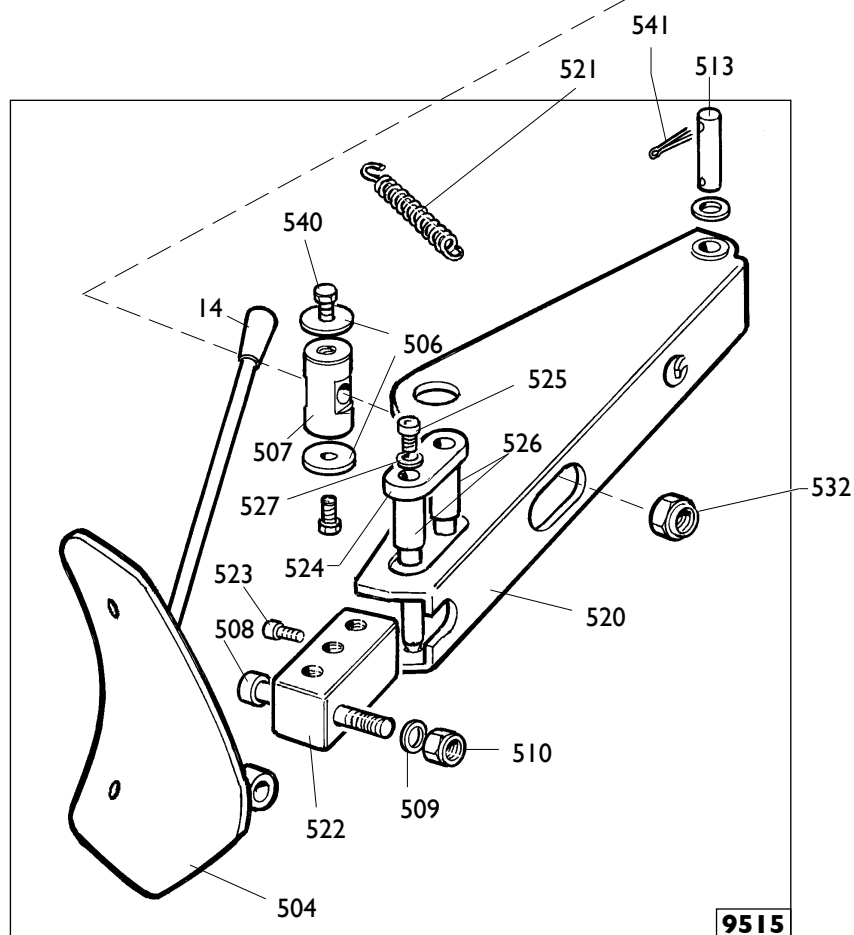
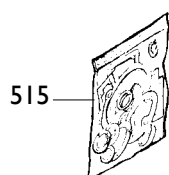
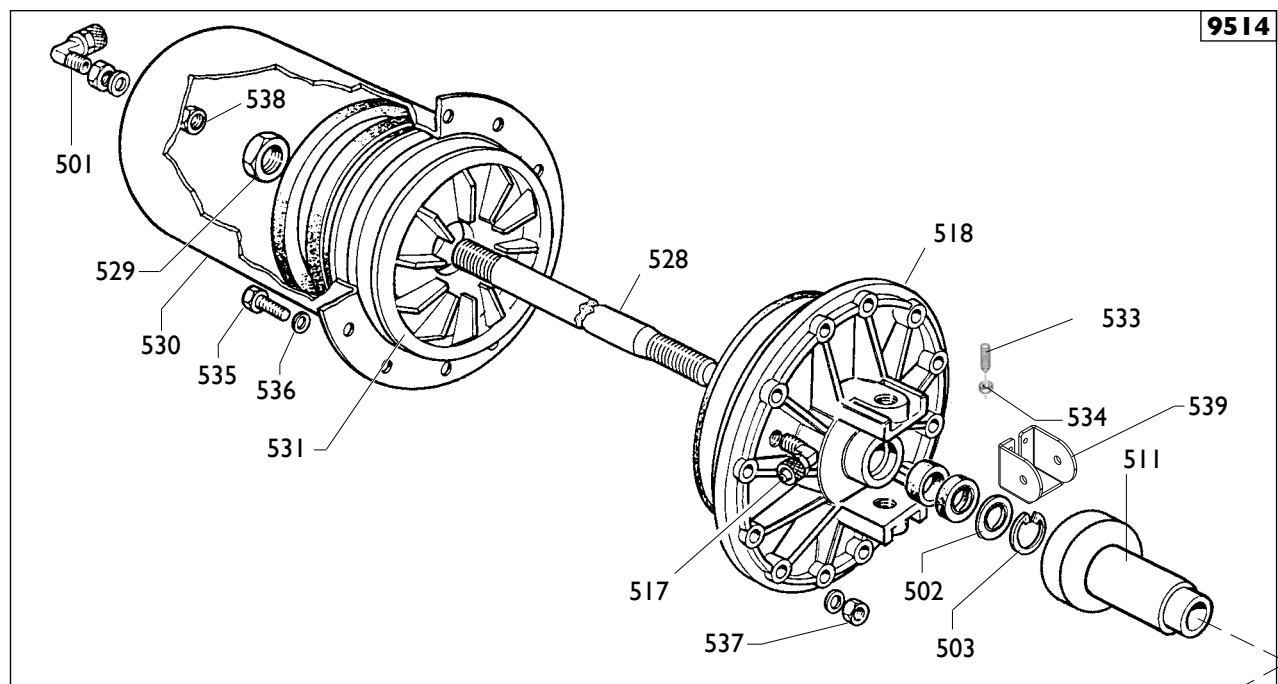
Ø 6	I-01684	TUBO	PIPE	ROHR	TUYAU
Ø 8	I-01683	TUBO	PIPE	ROHR	TUYAU
Ø 10	I-01875	TUBO	PIPE	ROHR	TUYAU

9751	252599	SCATOLA - BAR/PSI	BOX - BAR/PSI	SCHACHTEL - BAR/PSI	BOITE - BAR/PSI
9751	259565	SCATOLA - KPA	BOX - KPA	SCHACHTEL - KPA	BOITE - KPA
0701	262971	TUBO GONFIAGGIO MANOMETRO	PIPE PRESSURE GAUGE	ROHR DRUCKMESSER	TUYAU MANOMETRE
0702	3-00490	MANOMETRO BAR - PSI	BAR - PSI	BAR - PSI	BAR - PSI
0702	3-00493	MANOMETRO KPA	KPA	KPA	KPA
0703	235463	VALVOLA	VALVE	VENTIL	VANNE
0739	3-00103	RACCORDO	CONNECTOR	ANSCHLUSS	RACCORD
0742	3-00007	INNESTO	CLUTCH	KUPPLUNG	EMBRAYAGE
0743	234171	SCATOLA MANOMETRO		BOX	
0744	353537	SUPPORTO MANOMETRO		SUPPORT	
0745	2-71485	VITE M3,9X13	SCREW		
0746	3-00460	RACCORDO	CONNECTOR		
0747	325035	TUBO D.6 L.180 mm	PIPE		
0750	354410	TUBO aria L.3150 mm	PIPE		



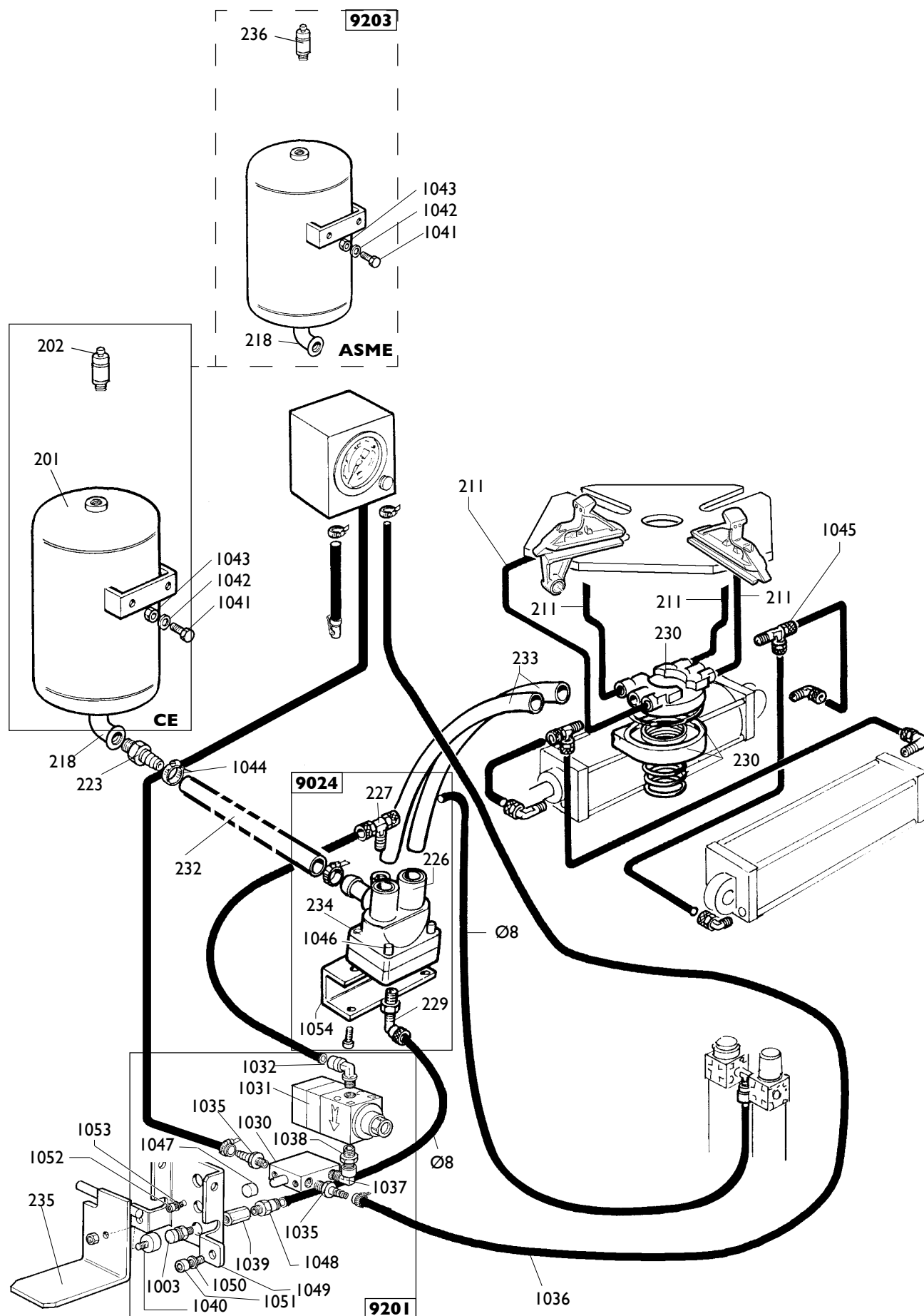
	MTS 40-20 MTS 40	Fig. H	06A / 09	Cassone
--	-----------------------------	---------------	-----------------	----------------

0002	428845	COPERCHIO	LID	DECKEL	COUVERCLE
0005	426768	PROTEZIONE	SHIELD	ABDECKUNG	PROTECTION
0006	436199	APPOGGIO	RIM SUPPORT	STUETZE	APPUI
0007	422019	PIEDE	FOOT	FUSS	PIED
0008	318183	RONDELLA	WASHER	UNTERLEGSCHIEBE	RONDELLE
0009	322348	VITE M10x20	SCREW	SCHRAUBE	VIS
0010	320191	VITE M8x30	SCREW	SCHRAUBE	VIS
0011	331055	PERNO PALO	PIN	ZAPFEN	PIVOT
0012	339456	PERNO MANIGLIA	PIN	ZAPFEN	PIVOT
0013	339046	PERNO BIELLA	PIN	ZAPFEN	PIVOT
0014	425219	MANOPOLA	KNOB	BALLENGRIFF	BOUTON
0016	5-101007	COFANO+ADESIVI	HOOD+LABEL		
0017	4-109098	PROTEZIONE	SHIELD	ABDECKUNG	PROTECTION
0018	239050	BIELLA	ROD		
0019	238911	PROLUNGA APPOGGIO	SUPPORT		
0020	4-102232	ADESIVO	LABEL		
0021	2-01225	VITE	SCREW		
0022	2-01885	VITE M6X25	SCREW		
0023	2-00047	COPIGLIA D.3X30	SCREW		
0024	2-01045	RONDELLA D.16	WASHER		
0025	2-00310	VITE M6X20	SCREW		
0026	2-00211	RONDELLA D.6	WASHER		
0027	2-00113	DADO M10	NUT		
0028	2-00112	DADO M8	NUT		
0029	418135	ADESIVO ROTAZIONE	LABEL		
0030	460384	ADESIVO CORGHI	LABEL		
0031	4-100566	ADESIVO MTS	LABEL		



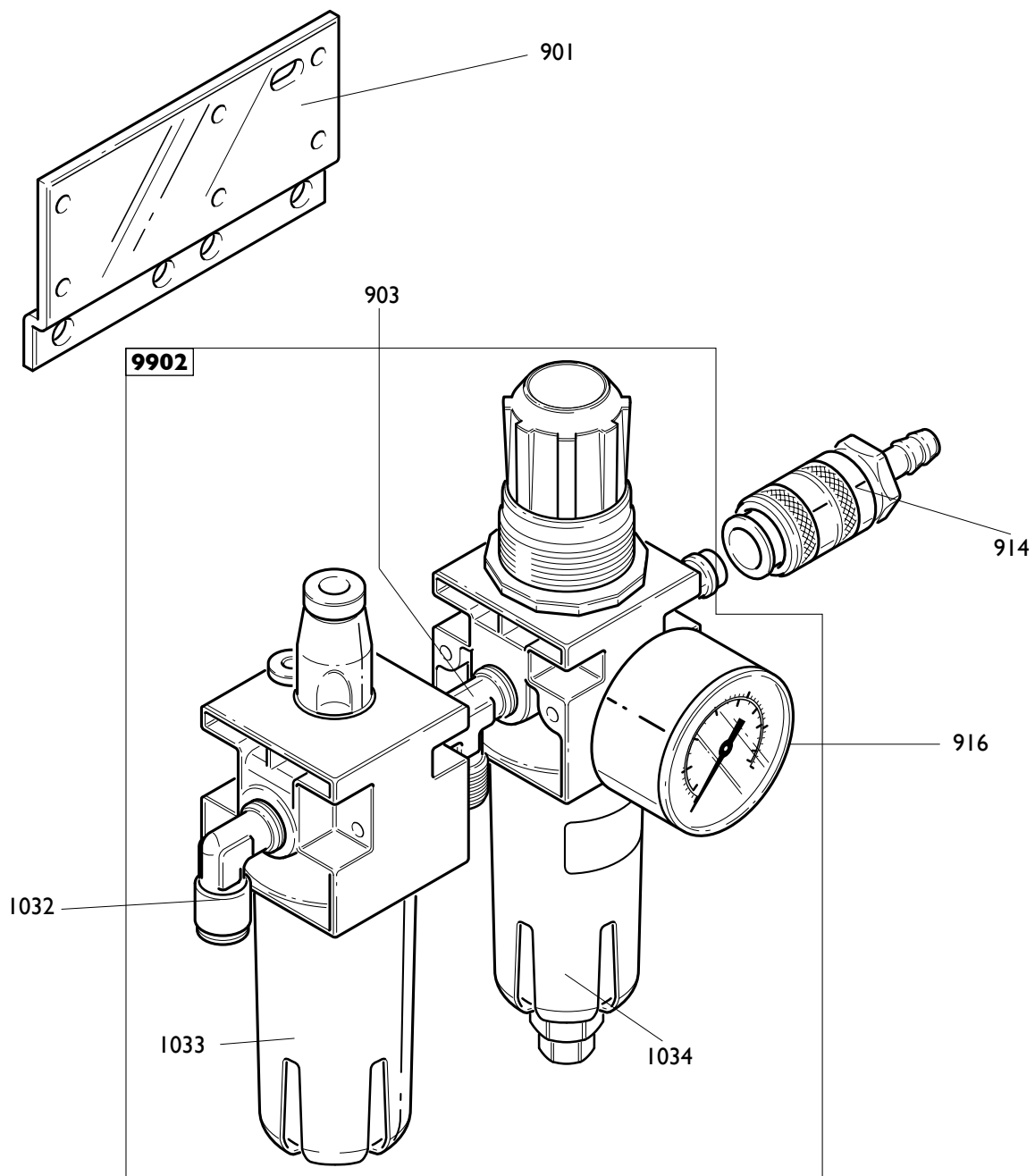
	MTS 40-20 MTS 40	Fig. I	05C / 06	Stallonatore
--	-----------------------------------	---------------	-----------------	---------------------

9514	5-100484	CILINDRO	CYLINDER	ZYLINDER	CYLINDRE
0501	3-00517	RACCORDO	CONNECTOR	ANSCHLUSS	RACCORD
0502	325561	RONDELLA	WASHER	UNTERLEGSCHEIBE	RONDELLE
0503	434031	ANELLO	RING	RING	ANNEAU
0517	3-00222	RACCORDO	CONNECTOR	ANSCHLUSS	RACCORD
0518	351905	FLANGIA	FLANGE	FLANSCH	FLASQUE
0535	2-00310	VITE M6x20	SCREW		
0536	2-00211	RONDELLA D.6	WASHER		
0537	436779	DADO M6	NUT		
0538	333524	DADO 1/4	NUT		
9515	245743	BRACCIO	ARM	ARM	BRAS
0014	425219	MANIGLIA	HANDLE	HANDGRIFF	POIGNEE
0504	224000	PALETTA	BEAD BREAKER	SCHAUFEL	PELLE
0506	323901	RONDELLA	WASHER	UNTERLEGSCHEIBE	RONDELLE
0507	339045	PERNO	PIN	ZAPFEN	PIVOT
0508	324008	VITE M12x90	SCREW		
0509	2-02249	RONDELLA	WASHER	UNTERLEGSCHEIBE	RONDELLE
0510	422255	DADO	NUT	MUTTER	ECROU
0520	245701	BRACCIO	ARM	ARM	BRAS
0522	345618	BLOCCHETTO	BLOCK	BLOCK	BLOC
0523	2-00308	VITE	SCREW	SCHRAUBE	VIS
0524	345616	FERMO	RETAINER	ANSCHLAG	ARRET
0525	2-00372	VITE	SCREW	SCHRAUBE	VIS
0526	345617	PUNTE	LOCKING	FESTKLEMMENSPIITZE	POINTE
0527	2-01299	RONDELLA	WASHER	UNTERLEGSCHEIBE	RONDELLE
0511	239061	TAMPONE	PAD	PUFFER	TAMPON
0513	323903	FULCRO	FULCRUM	DREHPUNKT	ENTABLURE
0515	238212	KIT GUARNIZIONI	SEALS KIT	DICHTUNGSATZ	KIT JOINTS
0521	4-101930	MOLLA	SPRING	FEDER	RESSORT
0528	4-101628	STELO	SHAFT	STEM	TIGE
0529	2-00989	DAMO M18	NUT		
0530	330190	CILINDRO	CYLINDER		
0531	337848	PISTONE	PISTON		
0532	2-01242	DADO M18	NUT		
0533	431864	VITE	SCREW		
0534	2-00992	DADO M14	NUT		
0539	4-101742	SUPPORTO BRACCIO	ARM SUPPORT		
0540	3-00372	VITE	SCREW		
0541	435055	COPPIGLIA	SPRING		



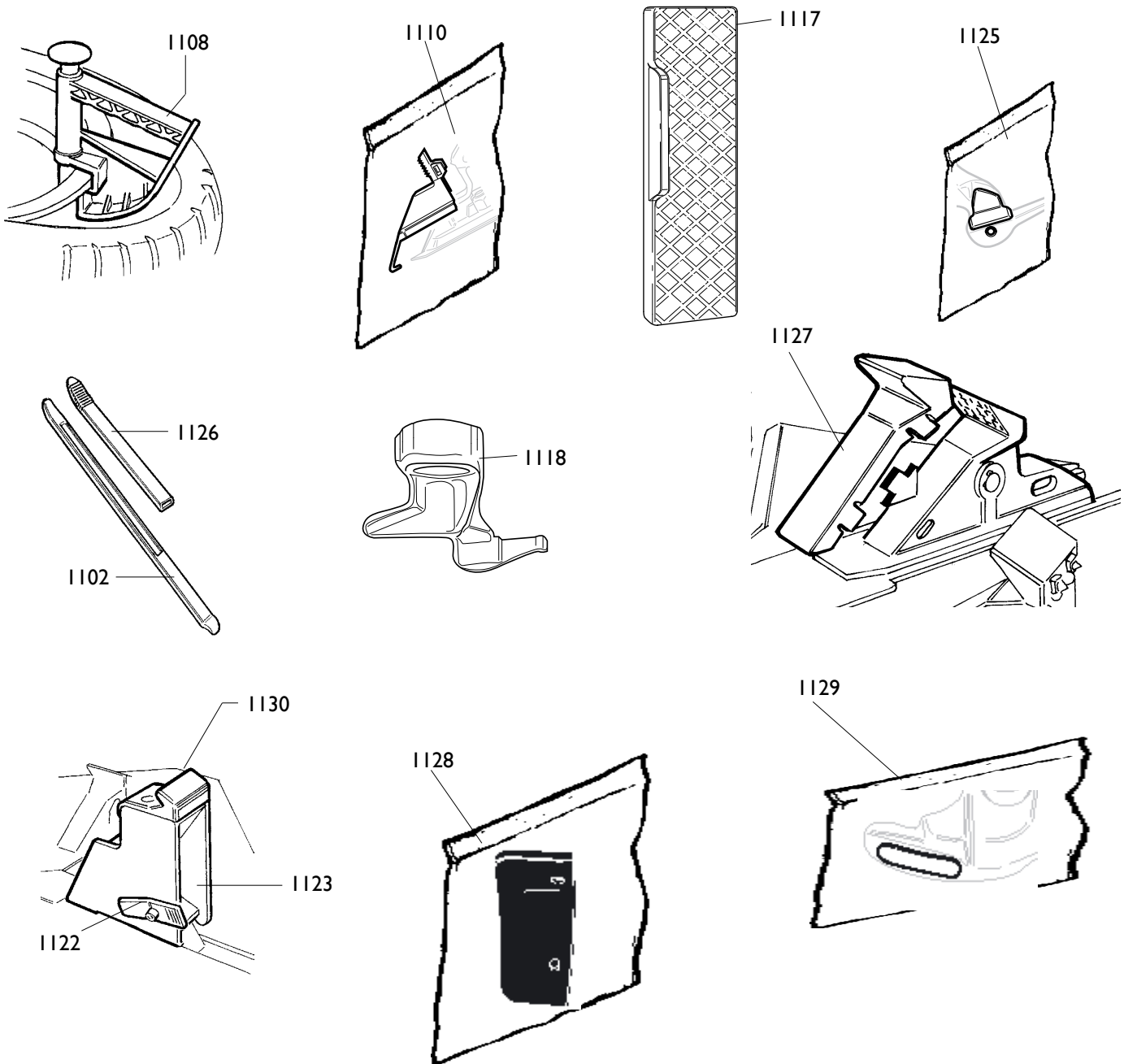
	MTS 40-20 MTS 40	Fig. L	04A / 10	Versione T.I.
--	-----------------------------------	---------------	-----------------	----------------------

Ø 6	I-01684	TUBO	PIPE	ROHR	TUYAU
Ø 8	I-01683	TUBO	PIPE	ROHR	TUYAU
9203	5-100580	SERBATOIO ASME	TANK ASME	TANK ASME	RESERVOIR ASME
0236	3-00278	VALVOLA	VALVE	VENTIL	VANNE
0201	240968	SERBATOIO CE	TANK	TANK	RESERVOIR
0202	3-00356	VALVOLA	VALVE	VENTIL	VANNE
0211	I-04223	TUBO	PIPE	ROHR	TUYAU
0218	438995	RACCORDO	CONNECTOR	ANSCHLUSS	RACCORD
0223	337704	RACCORDO	CONNECTOR	ANSCHLUSS	RACCORD
0235	252625	PEDALE	PEDAL	PEDAL	PEDALE
9024	242290	VALVOLA	VALVE	VENTIL	VANNE
0226	3-00403	CARTUCCIA	CARTRIDGE	EINSATZ	CARTOUCHE
0227	3-00287	RACCORDO	CONNECTOR	ANSCHLUSS	RACCORD
0229	3-00051	RACCORDO	CONNECTOR	ANSCHLUSS	RACCORD
0234	243020	VALVOLA	VALVE	VENTIL	VANNE
I046	2-94066	VITE M6X40	SCREW		
I054	342286	STAFFA	BRACKET		
0230	241841	RACCORDO	CONNECTOR	ANSCHLUSS	RACCORD
0232	4-102573	TUBO	PIPE	ROHR	TUYAU
0233	342289	TUBO	PIPE	ROHR	TUYAU
I041	2-00373	VITE M8X20	SCRW		
I042	2-00212	RONDELA D.8	WASHER		
I043	2-00112	DADO M8	NUT		
I044	403751	FASCETTA	FASTEN		
I045	3-00117	RACCORDO	CONNECTOR		
9201	252568	GRUPPO gonfiaggio	ASSEMBLY	GRUPPE	GROUPE
I003	235463	VALVOLA	VALVE	VENTIL	VANNE
I030	3-00365	VALVOLA	VALVE	VENTIL	VANNE
I031	3-00432	VALVOLA	VALVE	VENTIL	VANNE
I032	3-00221	RACCORDO	CONNECTOR	ANSCHLUSS	RACCORD
I035	3-00004	INNESTO	CLUTCH	KUPPLUNG	EMBRAYAGE
I036	352614	TUBO aria L.1900mm	PIPE	ROHR	TUYAU
I037	3-00138	RACCORDO	CONNECTION		
I038	3-00135	NIPPLO	CONNECTION	NIPPEL	NIPPLE
I039	338576	DISTANZIALE	SPACE		
I040	452624	ANTIVIBRANTE	ANTISHOCK		
I047	352619	CAPPELLOTTO	BOLT		
I048	3-00460	RACCORDO	CONNECTOR		
I049	352698	SUPPORTO	SUPPORT		
I050	2-00212	RONDELLA D.8	WASHER		
I051	2-00320	VITE M8	SCREW		
I052	2-00295	VITE M4X8	SCRE		
I053	2-00209	RONDELLA D.4	WASHER		



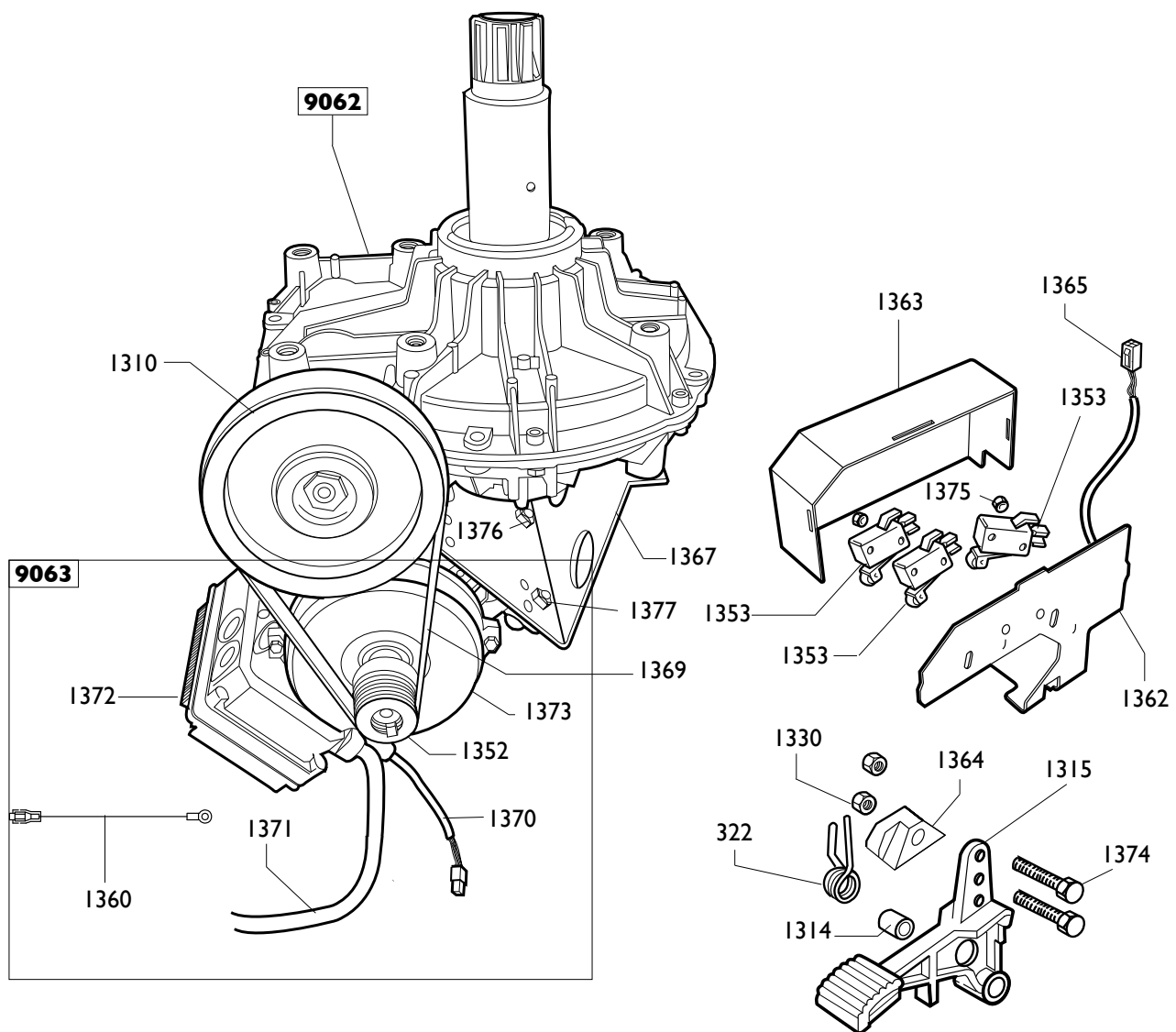
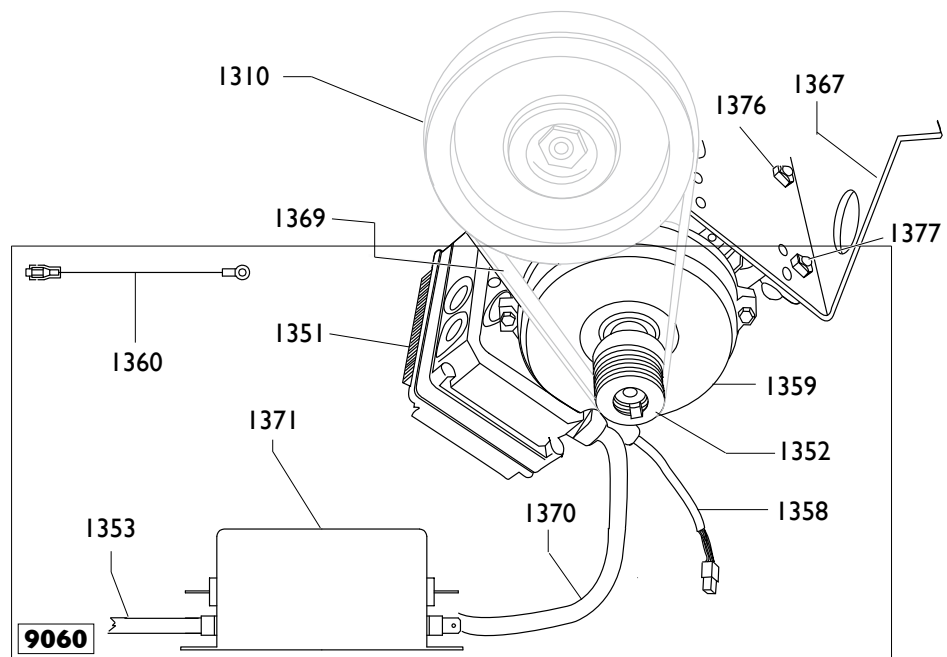
	MTS 40-20 MTS 40	Fig. M	05A / 06	Gruppo filtro
--	-----------------------------------	---------------	-----------------	----------------------

0901	335695	STAFFA	BRACKET	KLAUE	ETRIER
0903	3-00001	RACCORDO	CONNECTOR	ANSCHLUSS	RACCORD
9902	456522	FILTRO	FILTER	FILTER	FILTRE
1033	457511	BICCHIERE LUBRUF.	BOWL	GLAS	BOL
1034	457512	BICCHIERE FILTRO	BOWL	GLAS	BOL
0914	3-00257	GIUNTO	CUOPLING	KUPPLUNG	ACCOUPLEMENT
0916	3-00488	MANOMETRO	PRESSURE GAUGE	DRUCKMESSER	MANOMETRE
1032	3-00221	RACCORDO	CONNECTOR	ANSCHLUSS	RACCORD



	MTS 40-20 MTS 40	Fig. N	05A / 06	Accessori
--	-----------------------------	---------------	-----------------	------------------

I 102	4-108275	LEVA	LEVER	HEBEL	LEVIER
I 108	801435685	PINZA	PLIERS	ZANGE	PINCE
I 110	8-11100109	KIT 12 PROT. EST.	SHIELD	ABDECKUNG	PROTECTION
I 117	801458663	PROTEZIONE	SHIELD	ABDECKUNG	PROTECTION
I 118	801252083	KIT TORRETTA 8"	HEAD KIT 8"	DREHKOPF KIT 8"	TOUREL KIT 8"
I 123	801258650	KIT 4 ATT. MOTO	ADAPTOR	HALTERUNG	ATTAQUE
I 122	426746	CRICCHETTO	CRICK	SPERRKLINKE	CLIQUET
I 125	8-11100106	KIT 10 INSERTI	INSERT	EINLAGE	INSERT
I 126	8-11100104	KIT 6 PROT. LEVA	SHIELD	ABDECKUNG	PROTECTION
I 127	8-11100108	KIT 12 PROTEZ. CUNEO	SHIELD	ABDECKUNG	PROTECTION
I 128	8-11100105	KIT 6 PROTEZ. PALETTA	SHIELD	ABDECKUNG	PROTECTION
I 129	8-11100107	KIT 5 PASTIGLIE	INSERT	EINLAGE	INSERT
I 130	435202	CUNEO	SHIELD		



	MTS 40-20 MTS 40	Fig. O	12 / 10	Versione DV Motoinverter
--	-----------------------------------	---------------	----------------	---------------------------------

<i>MOTORE+INV 2 CONDENSATORI</i>				<i>MOTOR+REV.</i>	
9060	5-101153	200-230V 1ph	200-230V 1ph	200-230V 1ph	200-230V 1ph
1351	4-108154	SCHEDA ELETTR. 230V	P.C.BOARD	ELEKTR.PLATINE	FICHE ELECTR.
1352	4-102397	PULEGGIA	PULLEY	RIEMENSCHIEBE	POULIE
1353	4-109893	CAVO RETE	CABLE		
1358	4-109895	CAVO COMANDI 230V	CABLE		
1359	4-109821	MOTORE(SENZA SCHEDA)200-230/1/50-60HZ		MOTOR	
1360	4-103316	CAVO TERRA	CABLE		
1370	4-109894	CAVO ALIM.MOTORE	CABLE		
1371	4-109914	FILTRO RETE	FILTER		

		<i>MOTORE+INV</i>	<i>MOTOR+REV.</i>	<i>MOTOR+RICHTUNGSW.</i>	<i>MOTEUR+INV.</i>
9063	5-103622	115V 1ph	115V 1ph	115V 1ph	115V 1ph
1371	4-111586	CAVO RETE	CABLE	KABEL	CABLE
1372	4-111584	SCHEDA ELETTR. 115V		P.C.BOARD	
1352	4-102397	PULEGGIA	PULLEY	RIEMENSCHIEBE	POULIE
1360	4-101659	CAVO TERRA	CABLE		
1370	4-109895	CAVO COMANDI 115V CABLE			
1373	4-109821	MOTOINVERTER 115V(senza scheda)		MOTOINVERTER 115V	

9062	5-102648	RIDUTTORE	GEAR BOX	GETRIEBE	REDUCTEUR
1310	339870	PULEGGIA	PULLEY	RIEMENSCHIEBE	POULIE

1315	5-102714	PEDALE	PEDAL	PEDAL	PEDALE
1314	325050	DISTANZIALE	SPACER	ABSTANDSSTUECK	ENTRETOISE
0322	4-109664	MOLLA	SPRING	FEDER	RESSORT
1353	440874	MICROINTERUTORE	MICROSWITCH	MIKROSCHALTER	MICROINTERRUPT.
1330	346008	BOCCOLA	BUSHING	LAGER	DOUILLE
1362	4-102401	SUPPORTO MICRO	SUPPORT		
1363	4-102402	COPERCHIO	CASING		
1364	461535	SUPPORTO MICRO	SUPPORT		
1365	4-101693	CAVO COMANDI PEDALIERA		CABLE	
1367	4-109965	CULLA MOTORE 230/115V	SUPPORT		
1369	3-00573	CINGHIA	BELT		
1374	2-00441	VITE M6X50	SCREW		
1375	2-00124	DADO M4	NUT		
1376	421349	DADO M8	NUT		
1377	2-00375	VITE M8X30	SCREW		

Il disegno è realizzato con tutti i particolari ma solo quelli codificati sono forniti come ricambi. L'Azienda si riserva la facoltà di apportare modifiche senza preavviso.



Strada Statale 468, n°9 - 42015 Correggio (RE) ITALY
Tel. ++39 0522 639111 - Fax ++39 0522 639150
www.corgi.com - info@corgi.com

The drawing shows all parts but only the coded parts are supplied as spares. The Company reserves the right to make modifications without prior notice.

COMIM - Cod. 4-105238C - 1210.