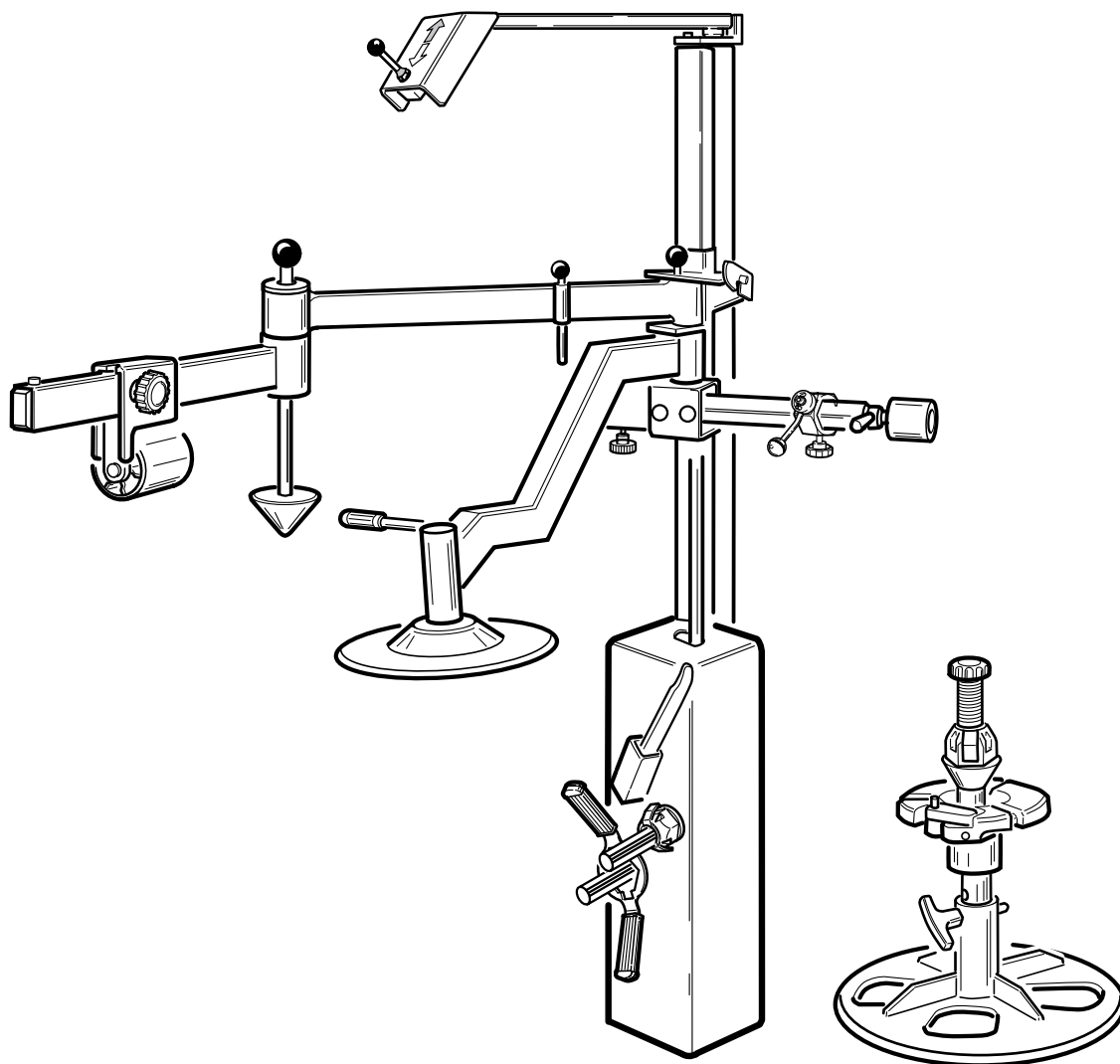


Questo libretto non autorizza l'utente ad intervenire sulle macchine ad esclusione di quanto esplicitamente descritto nel Manuale d'uso, ma consente all'utente di fornire informazioni precise all'Assistenza tecnica, al fine di ridurre i tempi di intervento.

PU 1500

The "Spare parts" booklet does not authorize the user to carry out work on the machine unless expressly specified in the instruction manual, but does enable him to provide accurate information to the assistance service in order to reduce downtime.

PEZZI DI RICAMBIO SPARE PARTS LIST ERSATZTEILLISTE PIECES DE RECHANGE



Code

460155C

Production from

01 / 2012

Der Katalog Ersatzteile stellt keine Genehmigung zu eigenmächtigen Eingriffen dar (mit Ausnahme jener im Handbuch beschriebenen), sondern er soll den Anwender in die Lage versetzen, dem technischen Service präzise Informationen zu liefern, um die Reparaturzeiten zu verkürzen.



Le livret "Pièces de rechange", n'autorise pas l'utilisateur à intervenir sur les machines, sauf pour tout ce qui est clairement décrit dans le manuel d'utilisation, mais lui permet de fournir des informations précises à l'assistance technique, afin de diminuer les délais d'intervention.

I

Sul presente documento sono stati indicati in grassetto i codici che sono variati rispetto a quelli riportati nella precedente versione del 04/11

En

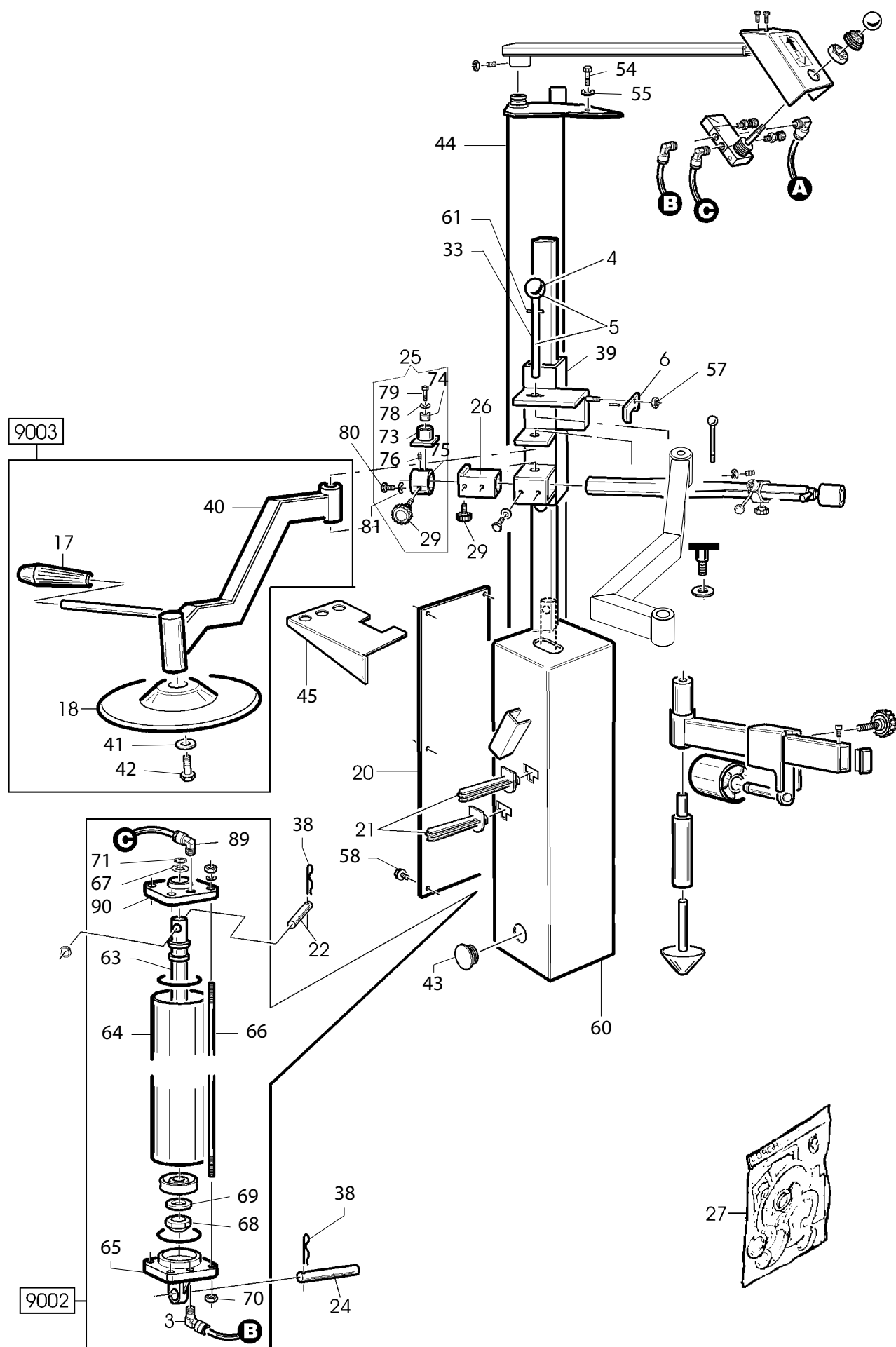
Codes that have changed from those given in the previous version dated 04/11 are indicated in bold type in this document


De

Die gegenüber der Vorgängerversion vom 04/11 geänderten Codes sind im vorliegenden Dokument fettgedruckt angegeben

Fr

Ce document reporte en gras les codes qui ont été modifiés par rapport à ceux reportés dans la version précédente du mois de 04/11



	PU 1500	Fig. A	01/12	Complessivo
--	---------	--------	-------	-------------

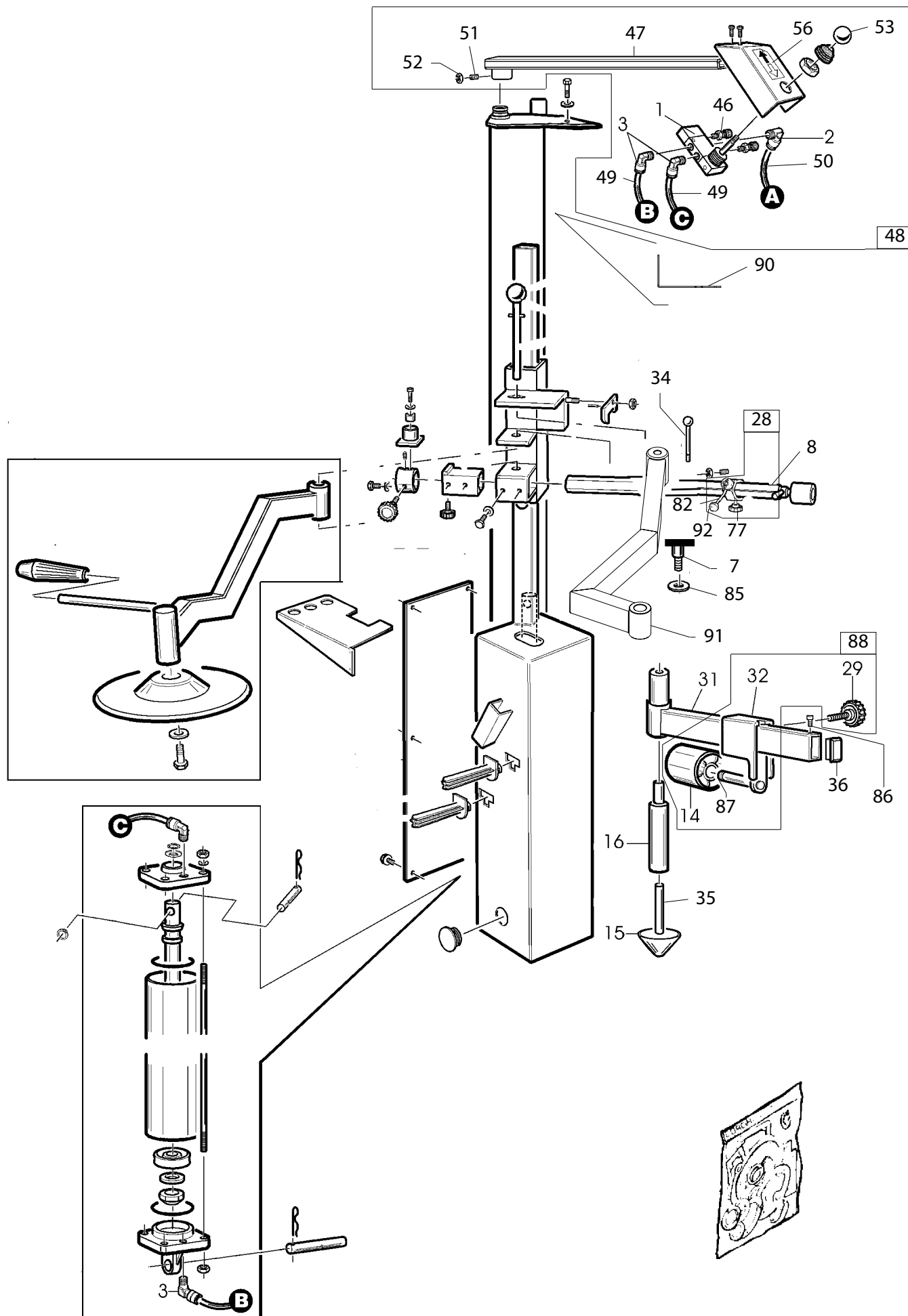
0004	423889	POMOLO	KNOB	BALLENGRIFF	POMMEAU
0005	4-100856	PERNO FULCRO BRACC.	PIN ZA	PFEN	PIVOT
0006	4-100858	GANCIO	HOOK	HAKEN	CROCHET
0008	359899	ASTA	SHAFT	STANGE	BARRE
0020	359904	COPERCHIO	LID	DECKEL	COUVERCLE
0021	438319	SUPPORTO	SUPPORT	LAGER	SUPPORT
0022	360127	PERNO SUPERIORE	PIN	ZAPFEN	PIVOT
0024	359909	PERNO FULCRO	PIN	ZAPFEN	PIVOT


0025	259895	SELETTORE	SUPPORT	LAGER S	UPPORT
0073	259891	CAMMA	CAM		
0074	359896	BOCCOLA	BUSH		
0075	359894	BOCC. FULCRO MANOP.	BUSH		
0076	421836	VITE CON SFERA	SCREW		
0078	309139	RONDELLA	WASHER		
0079	2-00310	VITE TE M6X20	SCREW		
0080	2-02644	VITE M6X40	SCREW		
0081	2-00146	DADO M6	NUT		

0026	259872	TUBO	PIPE	ROHR	TUYAU
0029	4-103154	MANOPOLA	KNOB		
0033	4-100857	PERNO FULCRO BRAC.	ARM		
0038	435055	MOLLA A SPILLO	SPRING		
0039	4-100807	SUPP. PORTA RULLI	SUPPORT		
0043	460706	TAPPO D.27	PLUG		
0044	4-100808	MONTANTE	SUPPORT		
0045	360272	LAMIERA PORTAUTENS.	SUPPORT		
0051	2-91682	GRANO M6X16	SCREW		
0052	2-00146	DADO M6	NUT		
0054	2-01109	VITE M10X80	SCREW		
0055	2-02494	RONDELLA M10	WASHER		
0057	2-01020	DADO M8	NUT		
0058	319760	VITE D.4,2X13	SCREW		
0060	259876	CARCASSA	BOX		
0061	2-00966	SPINA D.3X24	SPIROL		

9003	5-100555	BRACCIO	ARM	ARM	BRAS
0017	425219	MANOPOLA	KNOB	BALLENGRIFF	BOUTON
0018	454832	DISCO	DISK	SCHEIBE	DISQUE
0040	4-101864	BRACCIO PREMITALLONE		ARM	
0041	354939	BOCCOLA	BUSH		
0042	2-01815	VITE M12X40	SCREW		

9002	259951	CILINDRO	CYLINDER	ZYLINDER	CYLINDRE
0003	3-00053	RACCORDO	CONNECTOR	ANSCHLUSS	RACCORD
0027	245067	KIT GUARNIZIONI	SEALS KIT	DICHTUNGSATZ	KIT JOINTS
0090	5-104739	FLANGIA ANT.	FLANGE		
0063	359844	STELO	ROD		
0064	357193	CAMICIA	LINER		
0065	358118	FLANGIA POST.	FLANGE		
0066	459840	TIRANTE M8X55	BOLT		
0067	339208	RONDELA D.8,5X22X4	WASHER		
0068	2-91640	DADO M12	NUT		
0069	2-00214	RONDELLA D.12	WASHER		
0070	2-01137	DADO M8	NUT		
0071	442903	ANELLO ELASTICO	RING		
0089	3-00051	RACCORDO D.6	CONNECTOR		

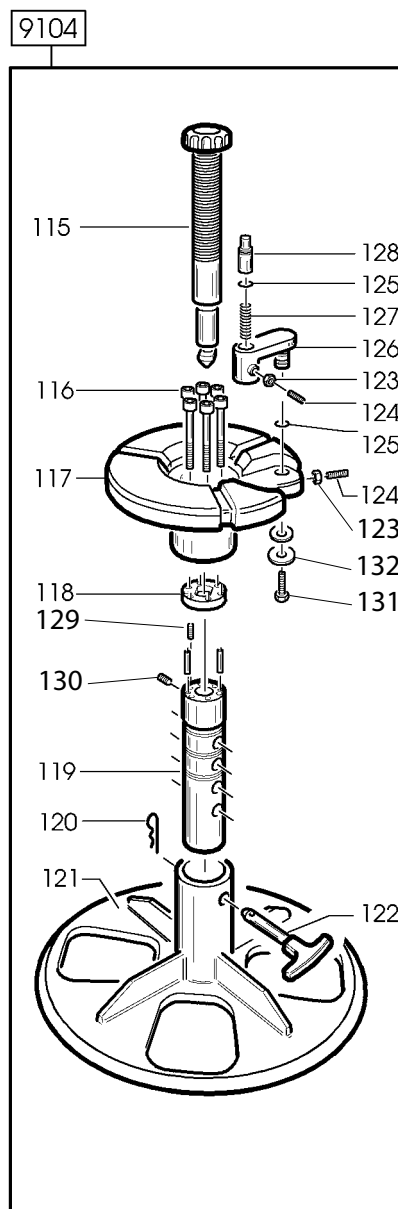
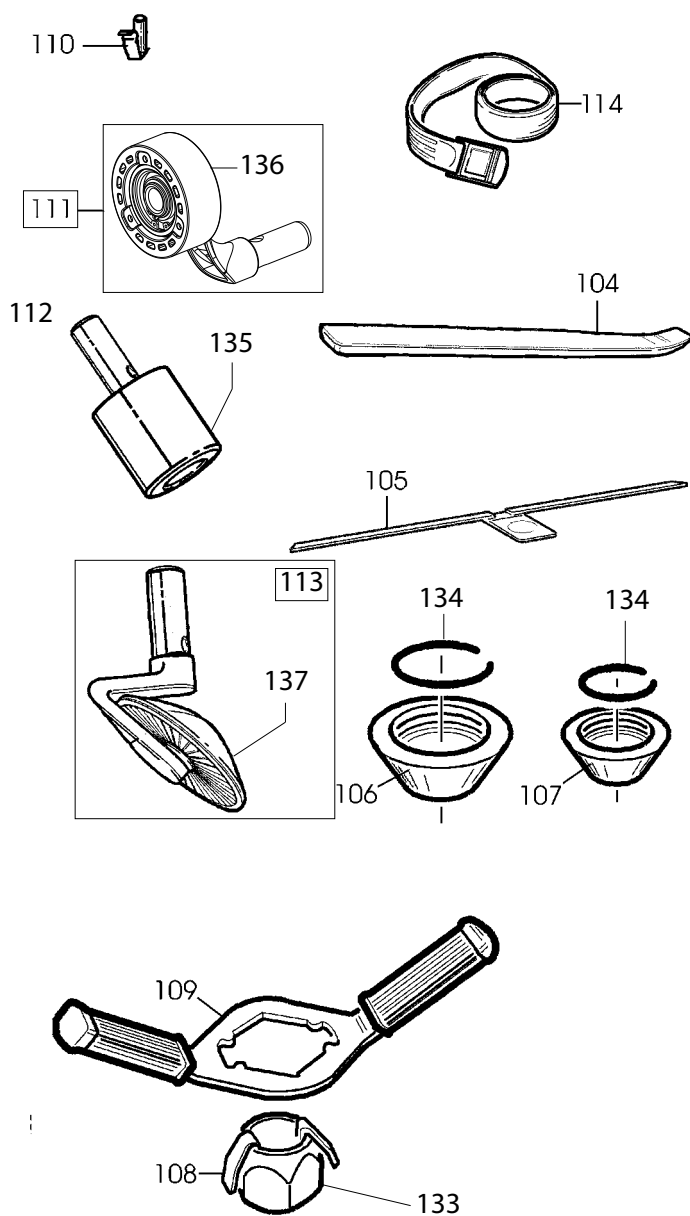



	PU 1500	Fig. A1	04/11	Complessivo
--	---------	---------	-------	-------------

0048	5-101126	BRACCIO PORTACOMANDO CPL.	ARM		
0001	3-00371	VALVOLA	VALVE	VENTIL	VANNE
0002	3-00049	RACCORDO D.8	CONNECTION		
0046	3-00181	SILENZIATORE	CONNECTOR		
0047	260009	BRACCIO PORTACOM.	ARM		
0049	327795	TUBO D.6 L.2600mm	PIPE		
0050	322043	TUBO D.8 L.2400mm	PIPE		
0053	440583	MANOPOLA	HANDLE		
0056	446665	AD.COMANDO SBLOCC.	LABEL		

0007	2-02162	VITE M10X20	SCREW		
0015	460013	CONO	CONE	KEGEL	CONE
0016	360017	PROLUNGA	EXTENSION	CORDVERLAENGERUNG	RALLONGE
0031	4-100821	BRACCIO	ARM	ARM	BRAS
0034	4-100859	PERNO FERMO ROTAZIONE		PIN	
0035	360018	PERNO PORTA CONO	PIN		
0036	460016	TAPPO	PLUG		
0085	352663	RONDELLA	WASHER		
0086	2-01989	VITE M6X10	SCREW		
0090	4-112423	SUPPORTO SCATOLA MANOMETRO		SUPPORT	
0091	4-110849	BRACCIO SNODATO	ARM		
0008	359899	ASTA	SHAFT		

0028	261150	REGISTRO	REGISTER		
0092	459137	POMOLO	KNOB		
0077	459897	MANOPOLA	KNOB		
0082	261146	BRACCIO A CAMMA DX	ARM		
0088	5-100506	RULLO PREMITALL.	ROLLER		
0014	460015	RULLO	ROLLER	WALZE	ROULEAU
0029	4-103154	MANOPOLA	KNOB	BALLENGRIFF	BOUTON
0032	4-101688	SCORREVOLE	SLIDER		
0087	2-71587	ANELLO D.20	SEEGER		



	PU 1500	Fig. B	01A/05	Accessori Pax
--	---------	--------	--------	---------------

9104	5-100966	SUPPORTO	SUPPORT	LAGER	SUPPORT
0115	5-100967	BLOCCAGGIO RUOTE	WHEEL BLOCK	SPERRE	BLOCAGE
0116	4-104811	VITE	SCREW	SCHRAUBE	VIS
0117	4-103152	CENTRAGGIO RUOTE	WHEEL SPIGOT	ZENTRIERUNG	CENTRAGE
0118	4-103142	RONDELLA	WASHER	UNTERLEGSCHIEBE	RONDELLE
0119	4-103141	ALBERO	SHAFT	WELLE	ARBRE
0120	2-02221	COPIGLIA	SPLIT PIN	SPLINT	GOUPILLE
0121	4-103140	BASE PLATORELLO	WHEEL SUPPORT	PLATE BASE	BASE PLAT
0122	263202	PERNO	PIN	ZAPFEN	PIVOT
0123	2-00676	DADO	NUT	MUTTER	ECROU
0124	2-02560	VITE	SCREW	SCHRAUBE	VIS
0125	424630	GUARNIZIONE	SEAL	DICHTUNG	JOINTS
0126	4-103143	LEVA	LEVER	HEBEL	LEVIER
0127	4-102331	MOLLA PERNO	PIN SPRING	FEDER	RESSORT
0128	4-102326	PERNO	PIN	ZAPFEN	PIVOT
0129	2-00850	VITE M5X10	SCREW		
0130	2-71364	VITE M8X12	SCREW		
0131	2-00355	VITE M5X16	SCREW		
0132	434168	RONDELLA D.6,6X24X2	WASHER		

0104	4-102462	LEVA	LEVER	HEBEL	LEVIER
0105	460234	REGLETTE	REGLETTE		
0106	357442	CONO GRANDE	CONE	KEGEL	CONE
0107	354116	CONO PICCOLO	CONE	KEGEL	CONE
0108	317511	CRICCHETTO	CRICK	SPERRKLINKE	CLIQUET
0109	260209	CHIAVE	WRENCH	SCHLUESSEL	CLEF
0110	260115	PERNO	PIN ZA	PFEN	PIVOT
0111	260219	UTENSILE CPL.	TOOL	WERKZEUG	OUTIL
0114	461826	CINGHIA	BELT	RIEMEN	COURROIE
0133	255132	GHIERA DI SERRAGGIO	NUT		
0134	446529	ANELLO ELASTICO D.47,5X2,5		RING	
0136	4-103525	RULLO GRANDE	ROLLER		

0112	260120	RULLO CPL.	ROLLER	WALZE	ROULEAU
0135	359663	RULLO D.68	ROLLER		

0113	260228	DISCO CPL.	DISK	SCHEIBE	DISQUE
0137	461230	DISCO	DISK		



NOTE

This image shows a full page of white paper with horizontal dashed lines, typical of primary-ruled notebook paper. The lines are evenly spaced and run across the width of the page. There are no margins, text, or other markings present.

Il disegno è realizzato con tutti i particolari ma solo quelli codificati sono forniti come ricambi. L'Azienda si riserva la facoltà di apportare modifiche senza preavviso.



Via per Carpi, n.9 - 42015 Correggio (RE) ITALY
Tel. ++39 0522 639111 - Fax ++39 0522 639150
www.corgi.com - info@corgi.com

The drawing shows all parts but only the coded parts are supplied as spares. The Company reserves the right to make modifications without prior notice.