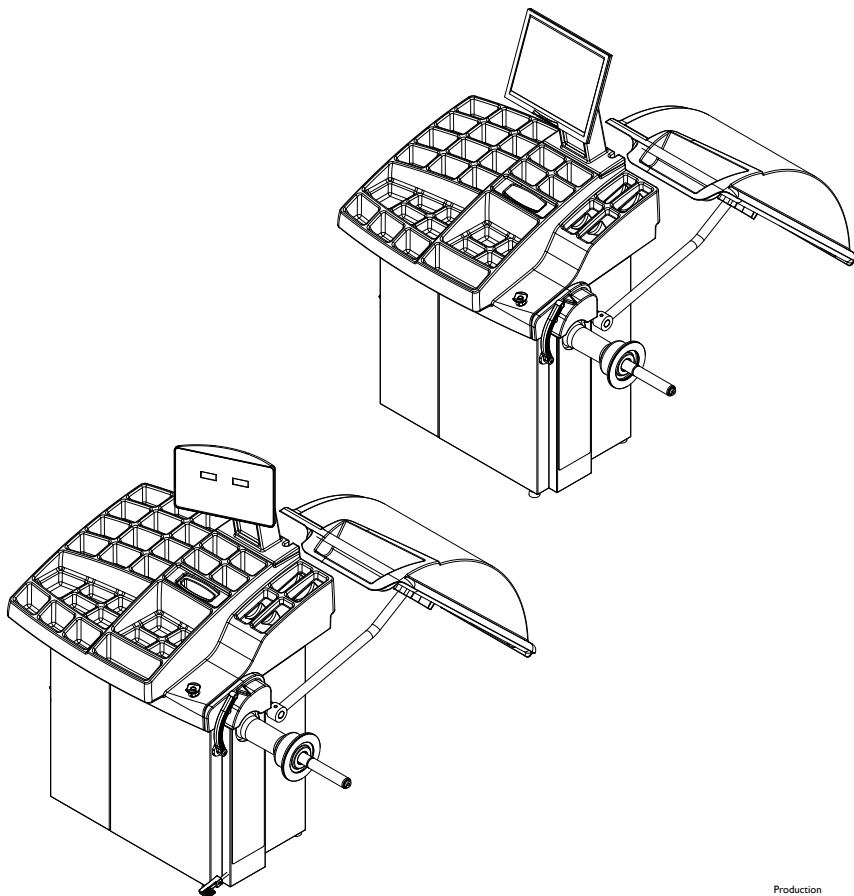


Questo libretto non autorizza l'utente ad intervenire sulle macchine ad esclusione di quanto esplicitamente descritto nel Manuale d'uso, ma consente all'utente di fornire informazioni precise all'Assistenza tecnica, al fine di ridurre i tempi di intervento.

EM 9350 EM 9380

The "Spare parts" booklet does not authorize the user to carry out work on the machine unless expressly specified in the instruction manual, but does enable him to provide accurate information to the assistance service in order to reduce downtime.

PEZZI DI RICAMBIO SPARE PARTS LIST ERSATZTEILLISTE PIECES DE RECHANGE



Code

Production

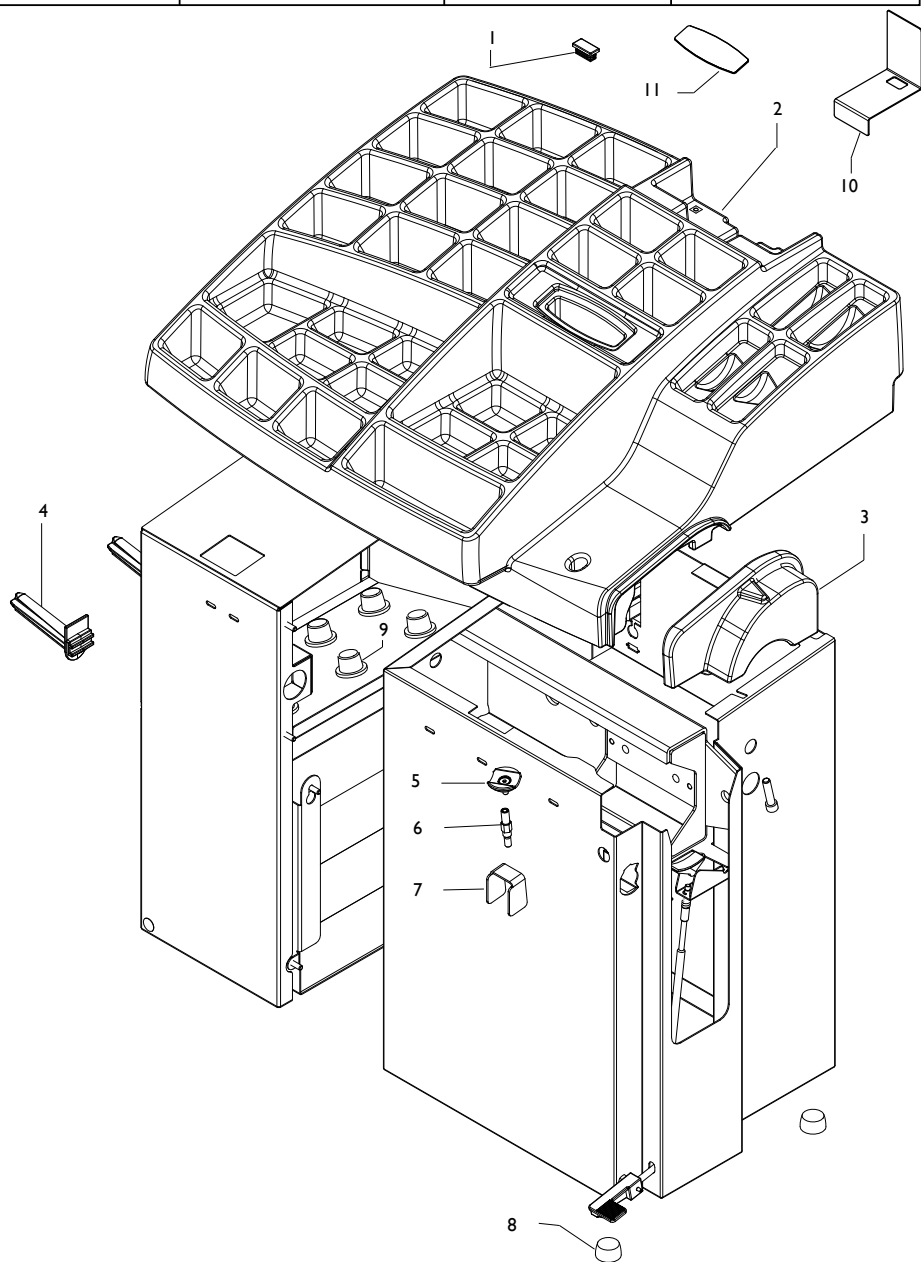
4-I14232

01 / 12

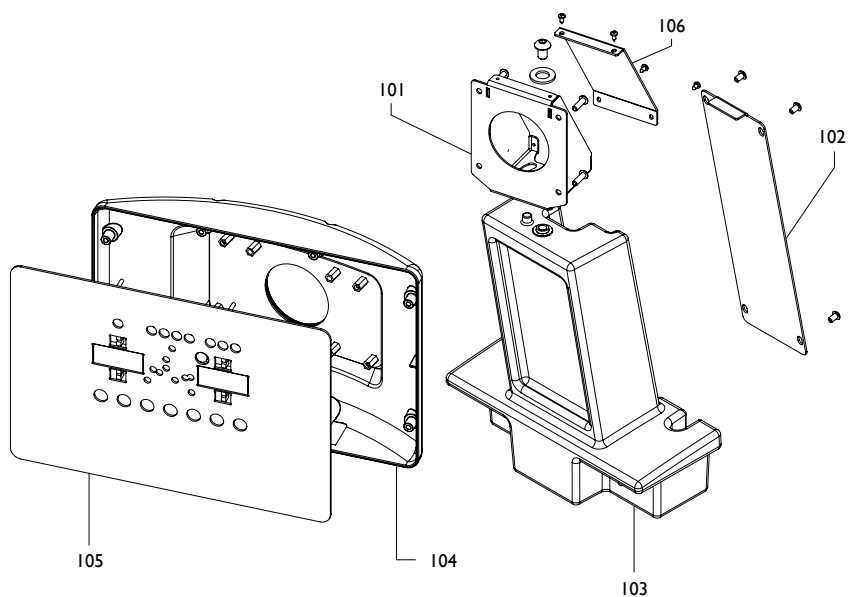
Der Katalog Ersatzteile stellt keine Genehmigung zu eigenmächtigen Eingriffen dar (mit Ausnahme jener im Handbuch beschriebenen), sondern er soll den Anwender in die Lage versetzen, dem technischen Service präzise Informationen zu liefern, um die Reparaturzeiten zu verkürzen.



Le livret "Pièces de rechange", n'autorise pas l'utilisateur à intervenir sur les machines, sauf pour tout ce qui est clairement décrit dans le manuel d'utilisation, mais lui permet de fournir des informations précises à l'assistance technique, afin de diminuer les délais d'intervention.

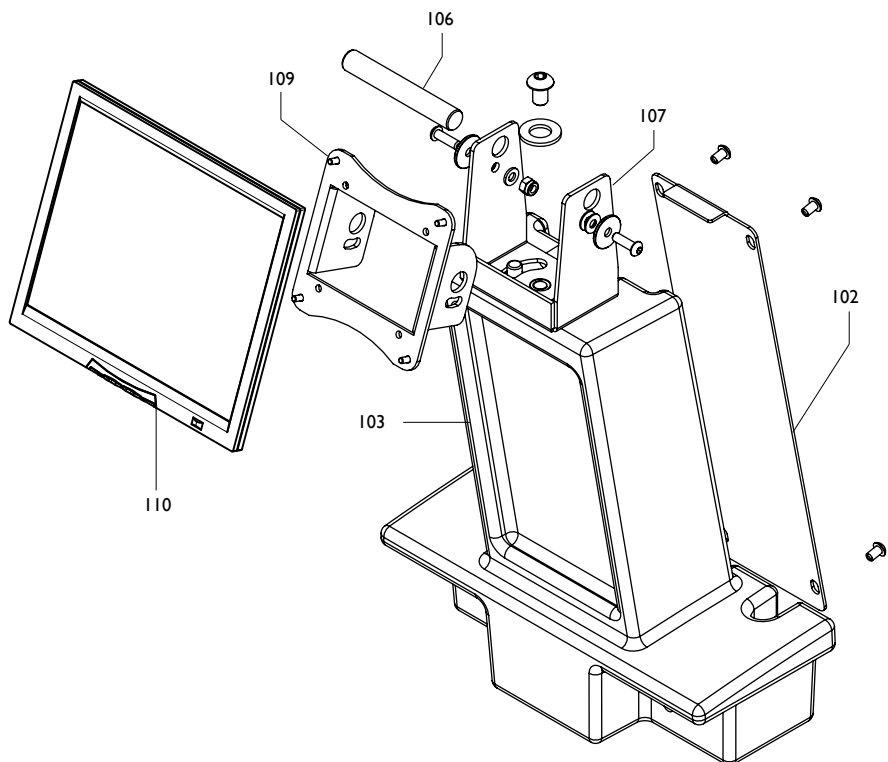


0001	4-113096	TAPPO	PLUG
0002	4-112600/90	COPERCHIO	LID
0003	4-112854/90	MODULO ANT. COPERCHIO	PLATE
0004	438319	PORTAFLANGE	SUPPORT
0005	336581	INCUDINE	SUPPORT
0006	4-112605	PERNO INCUDINE	PIN
0007	4-112625	STAFFA INCUDINE	BRACKET
0008	460029	PIEDE	FOOT
0009	441224	PORTACONO	CONE SUPPORT
0010	4-112579/90	CARTER	CASING
0011	5-100030	TASTIERA	KEYBOARD



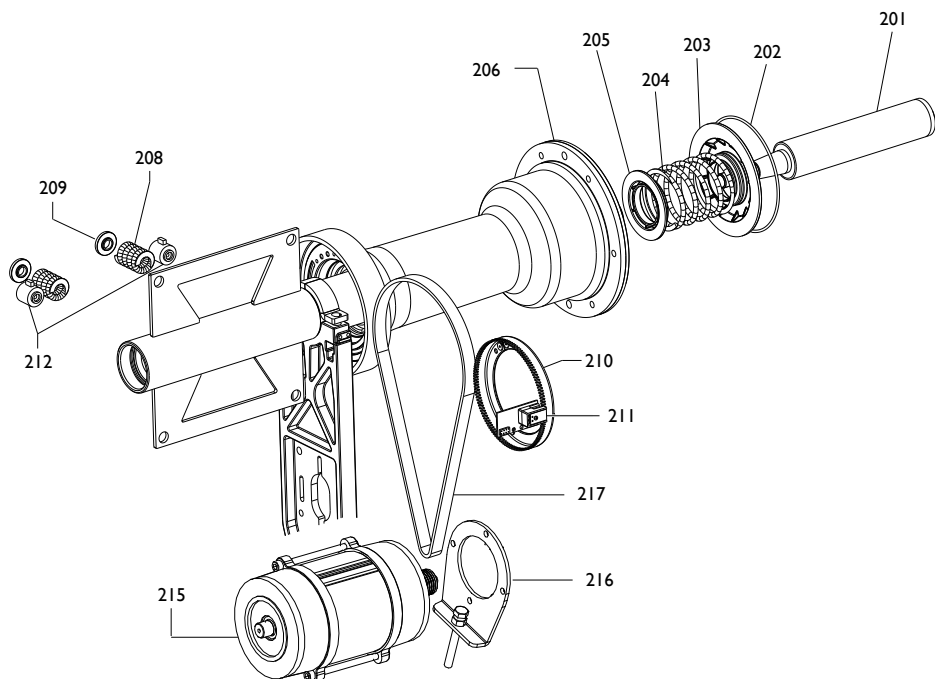
0101	4-112597/90	ATTACCO DISPLAY
0102	4-112595/90	CARTER SUPPORTO
0103	4-112599/90	SUPPORTO TESTATA
0104	4-406647/90	TESTATA DISPLAY
0105	4-112594	DISPLAY
0106	4-112596/90	CARTER

DISPLAY
CONNECTION
CASING
SUPPORT
DISPLAY HEAD
DISPLAY
CASING

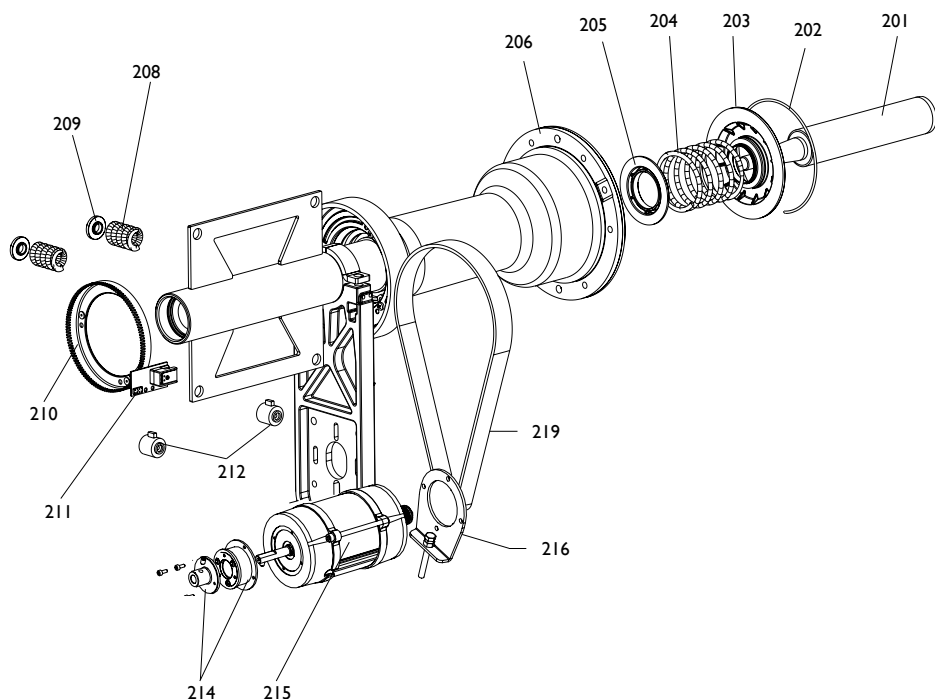


0103	4-112599/90	SUPPORTO TESTATA
0106	4-104380	PERNO
0107	4-105362/90	STAFFA
0102	4-112595/90	CARTER SUPPORTO
0109	4-104381/90	FLANGIA
0110	4-103594	MONITOR 17"
0110	3-01952	MONITOR 19"

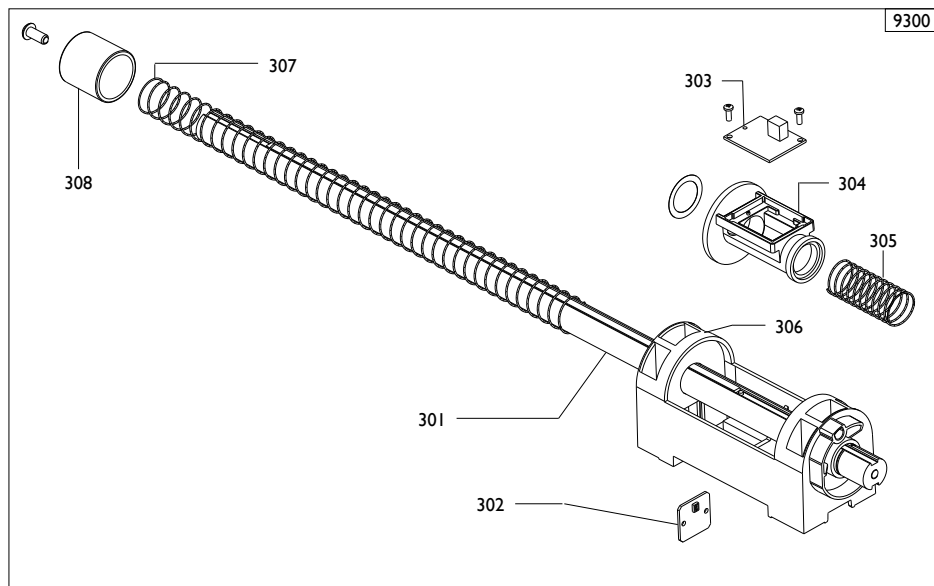
SUPPORT
PIN
SUPPORT
CASING
FLANGE
MONITOR 17"
MONITOR 19"



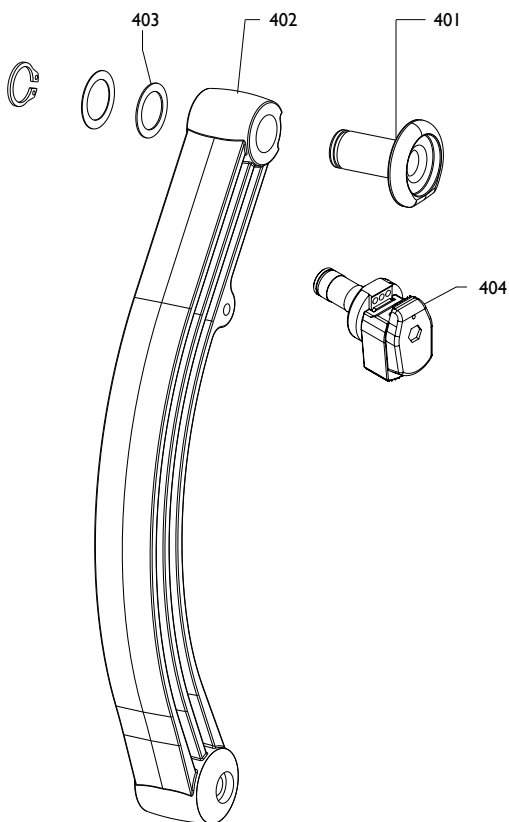
0201	5-101514	MOZZO	HUB
0202	4-101740	ANELLO	RING
0203	4-104590	DISCO	DISK
0204	4-104588	MOLLA	SPRING
0205	4-104589	DISCO	DISK
0206	5-104355	GRUPPO	ASSEMBLY
0208	4-104652	MOLLA	SPRING
0209	4-104650	BOCCOLA	BUSHING
0210	5-104259	KIT DISCO	DISK
0211	5-104286	SCHEDA ENCODER	ENCODER
0215	5-104356	MOTORE AC 230V+PULEGGIA	MOTOR+PULLEY
0215	5-104357	MOTORE AC 115V+PULEGGIA	MOTOR+PULLEY
0216	4-104598	FLANGIA	FLANGE
0217	3-03052	CINGHIA	BELT



0201	5-101514	MOZZO	HUB	NABE	MOYEU
0202	4-101740	ANELLO	RING	RING	ANNEAU
0203	4-104590	DISCO	DISK	SCHEIBE	DISQUE
0204	4-104588	MOLLA	SPRING	FEDER	RESSORT
0205	4-104589	DISCO	DISK	SCHEIBE	DISQUE
0206	5-104355	GRUPPO	ASSEMBLY	GRUPPE	GROUPE
0208	4-104652	MOLLA	SPRING	FEDER	RESSORT
0209	4-104650	BOCCOLA	BUSHING	LAGER	DOUILLE
0210	5-104259	KIT DISCO	DISK	SCHEIBE	DISQUE
0211	5-104286	SCHEDA ENCODER	ENCODER	CODIERER	ENCODER
0212	5-103533	PICK-UP	PICK-UP	PICK-UP	PICK-UP
0214	5-103692	FRENO+MOZZO+CONN		BRAKE	
0215	5-104358	MOTORE AC 230V+PULEGIA			MOTOR
0215	5-104359	MOTORE AC 115V+PULEGIA			MOTOR
0216	4-104598	FLANGIA	FLANGE	FLANSCH	FLASQUE
0219	3-03052	CINGHIA	BELT	RIEMEN	COURROIE

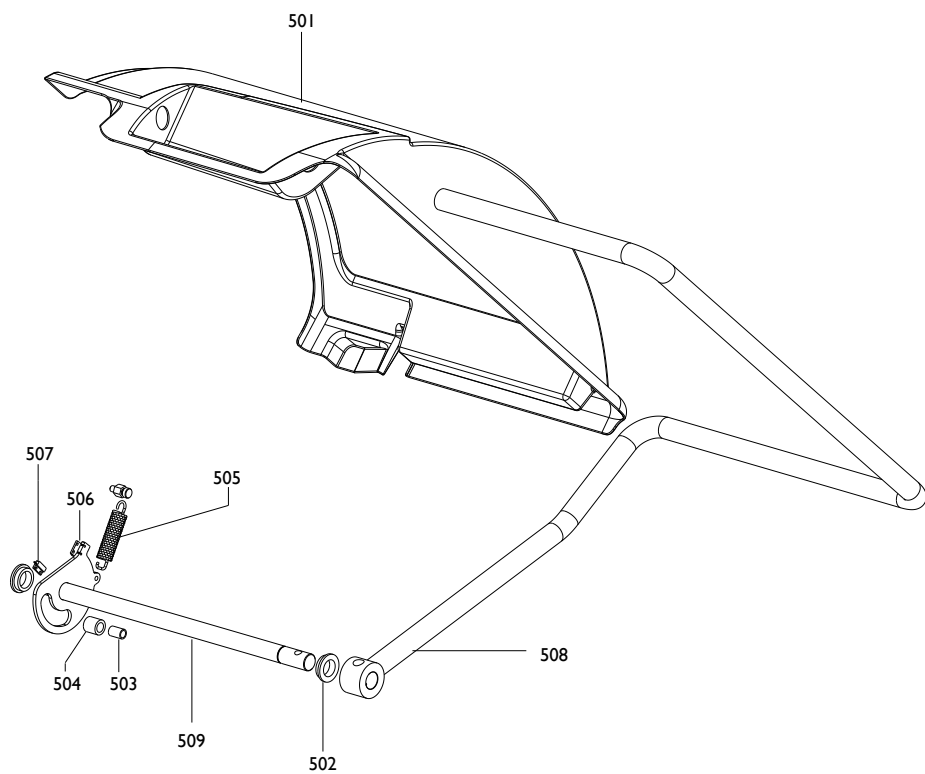


9300	5-100965	TASTATORE DIGITALE	DIGITAL FEELER
0301	5-103203	ASTA+MAGNETI+TARGHETTA	STAFF+MAGNET+LABEL
0302	5-103204	SCHEDA ENCODER	ENCODER BOARD
0303	5-103205	SCHEDA MAGNETI	BOARD
0304	4-108799	SUPPORTO+ENCODER	SUPPORT+ENCODER
0305	4-108612	MOLLA	SPRING
0306	4-108592	SUPPORTO	SUPPORT
0307	4-108611	MOLLA	SPRING
0308	4-108594	BOCCOLA	BUSHING




0401	4-108607	TERMINALE NO CLIP
0402	4-108606	LEVA RILEVATORE
0403	450073	ANELLO
0404	5-101462	TERMINALE CLIP

TERMINALE NO CLIP
LEVER
RING
TERMINAL CLIP

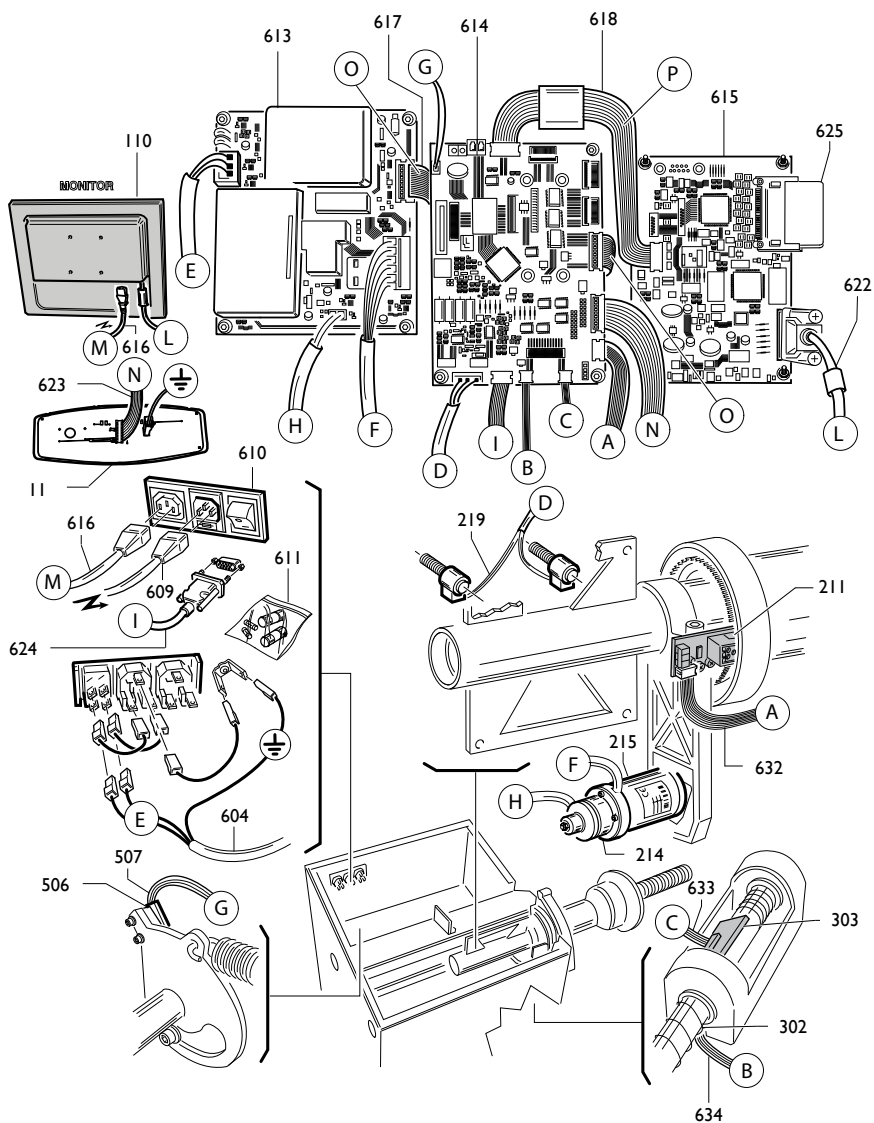



0501	4-105459/90	PROTEZIONE	PROTECTION
0502	433637	BOCCOLA	BUSHING
0503	4-108658	DISTANZIALE	SPACE
0504	4-108657	FINECORSO	END OF STROKE
0505	4-108659	MOLLA	SPRING
0506	4-108096	MAGNETE	MAGNET
0507	4-108095	MICROINTERRUTTORE	MICROSWITCH
0508	4-108600	TUBO PER PROTEZIONE	PROTECTION
0509	4-108603	PERNO PROTEZIONE	PIN



	EM 9350	Impianto elettrico	TAV. G - 01 / 12
--	---------	--------------------	------------------

0105	4-112594	DISPLAY	DISPLAY
0215	5-104356	MOTORE+PULEGGIA 230V	MOTOR+PULLEY
0215	5-104357	MOTORE+PULEGGIA 115V	MOTOR+PULLEY
0212	5-103533	PICK UP+CAVO	PICK UP+CABLE
0211	5-104286	SCHEDA ENCODER	ENCODER
0302	5-103204	SCHEDA ENCODER TASTATORE	ENCODER BOARD
0303	5-103205	SCHEDA MAGNETI	MAGNET BOARD
0506	4-108096	MAGNETE M4	MAGNET
0507	4-108095	INTERRUTTORE REED+CAVO	SWITCH
0604	4-109786	CAVO ALIM.3P	CABLE
0608	5-104287	SCHEDA EL.+SW	P.C.BOARD+SW
0609	3-01943	CAVO RETE 230V	CABLE
0609	4-107853	CAVO RETE 115V	CABL
0610	3-01941	INTERRUTTORE	SWITCH
0611	5-102043	KIT 3 FUSIBILI 8AT	FUSE KIT 8AT
0619	4-109785	CAVO FLAT 8VIE	FLAT
0620	4-109761	CAVO FLAT 6 VIE	FLAT
0621	4-109760	CAVO FLAT 4 VIE	FLAT
0626	462711	CAVO FLAT 3P	FLAT
0627	4-109787	CAVO PROLUNGA PICKUP/CPU	CABLE
0630	4-109819	CAVO PROLUNGA MICRO	CABLE
0631	4-109820	CAVO PROLUNGA MOTORE	CABLE



	EM 9380	Impianto elettrico	TAV. GI - 01 / 12
--	---------	--------------------	-------------------

0011	5-100030	TASTIERA	KEYBOARD
0110	4-103594	MONITOR 17"	MONITOR 17"
0110	3-01952	MONITOR 19"	MONIITOR 19"
0211	5-104286	SCHEDA ENCODER	ENCODER
0214	5-103692	FRENO+MOZZO	BRAKE
0215	5-104358	MOTORE+PULEGGIA 230V	MOTOR+PULLEY
0215	5-104359	MOTORE+PULEGGIA 115V	MOTOR+PULLEY
0212	5-103533	PICK UP+CAVO	PICK UP+CABLE
0302	5-103204	SCHEDA ENCODER TASTATORE	ENCODER BOARD
0303	5-103205	SCHEDA MAGNETI	MAGNET BOARD
0506	4-108096	MAGNETE M4	MAGNET
0507	4-108095	INTERRUTTORE REED+CAVO	SWITCH
0604	4-108093	CAVO ALIM.3P	CABLE
0609	3-01943	CAVO RETE 230V	CABLE
0609	4-107853	CAVO RETE 115V	CABLE
0610	3-01941	INTERRUTTORE	SWITCH
0611	5-102043	KIT 3 FUSIBILI 8AT	FUSE KIT 8AT
0613	5-100117	SCHEDA ALIMENTATORE	P.C.BOARD
0614	5-104288	SCHEDA CPU	P.C.BOARD
0615	5-100146	SCHEDA GRAFICA	P.C.BOARD
0616	3-01942	CAVO ALIMENTAZIONE MONITOR	CABLE
0617	4-109502	CAVO FLAT 18VIE	FLAT
0618	4-109500	CAVO FLAT 12 VIE	FLAT
0622	4-106133	CAVO MONITOR	CABLE
0623	4-104684	CAVO FLAT 16VIE	FLAT
0624	453698	CAVO FLAT 3POLI	FLAT
0625	3-02032	COMPACT FLASH(NO SW)	COMPACT FLASH (NO SW)
0632	4-109586	CAVO FLAT 8VIE	FLAT
0633	4-109588	CAVO FLAT 6 VIE	FLAT
0634	4-109587	CAVO FLAT 4 VIE	FLAT



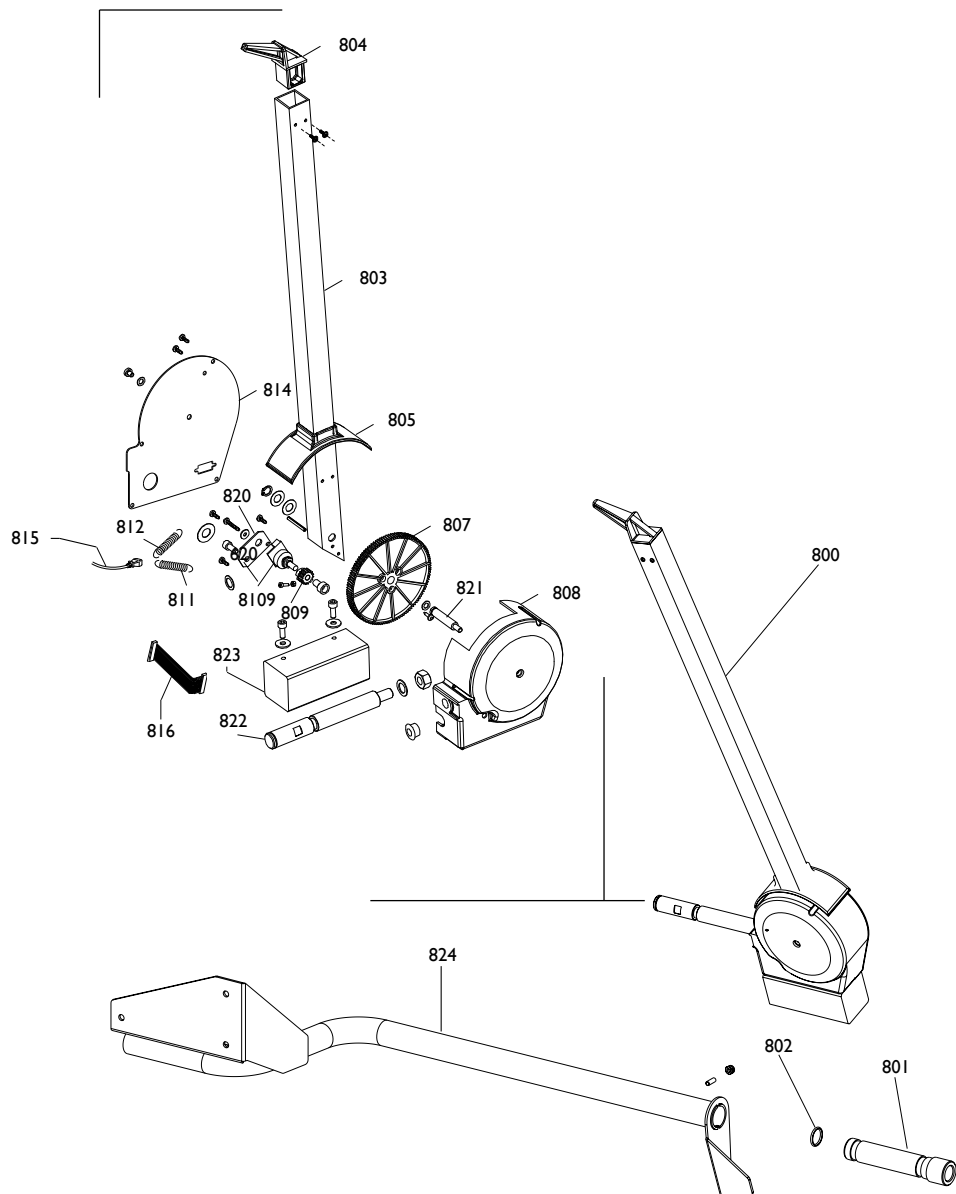


EM 9350

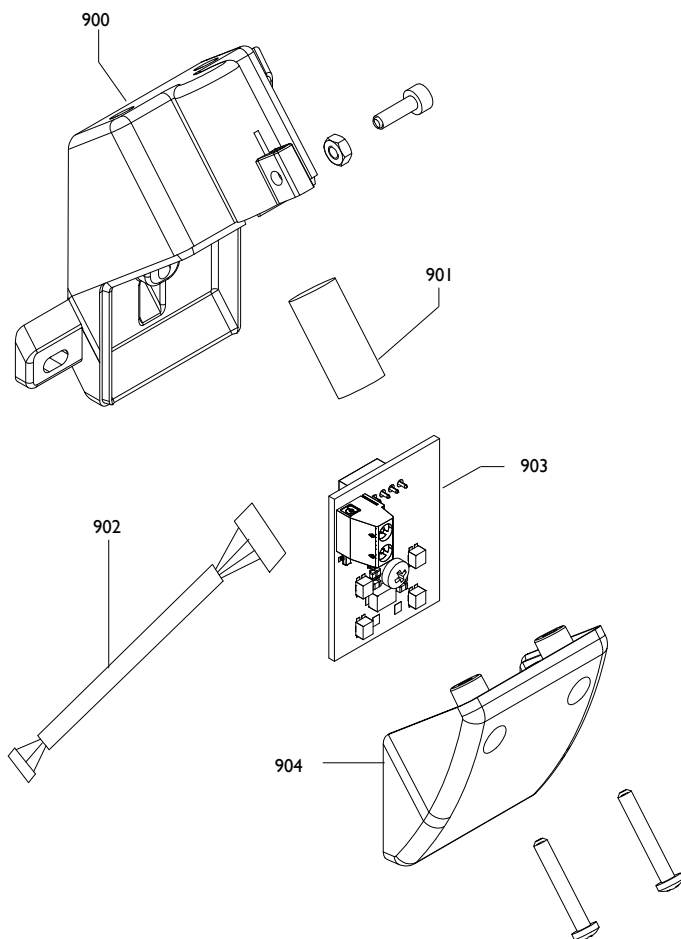
Freno

TAV.H-01 / 12

0701	4-110623	MOLLA	SPRING
0702	4-102639	PATTINO	PAD
0703	4-103659	MOLLA	SPRING
0704	4-103647	PEDALE	PEDAL
0705	4-110038	FULCRO PEDALE	PEDAL PIN



0800	257670	RILEVATORE	SIGNAL TRACER
0801	4-104994	BOCCOLA	BUSHING
0802	421590	GUARNIZIONE	GASKET
0803	353559	BRACCIO	ARM
0804	453572	TASTATORE	FEELER
0805	454458	PROTEZIONE	SHIELD
0807	453579	INGRANGGIO	GEAR
0808	454457	CORPO	BODY
0809	449326	PIGNONE	PINION
0810	5-101455	POTENZIOMETRO	POTENTIOMETER
0811	455120	MOLLA	SPRING
0812	454239	MOLLA	SPRING
0814	4-106072	COPERCHIO	LID
0815	4-106012	CONNETTORE	CONNECTOR
0816	4-106036	CAVO	CABLE
0820	353573	LAMIERA POTENZIOMETRO	PROTECTION
0821	353574	PERNO	PIN
0822	353575	PERNO	PIN
0823	353577	CONTRAPPESO	POIND
0824	4-104813	SUPPORTO TASTATORE	SUPPORT





EM 9350 - EM 9380

Illuminatore

TAV. L - 01 / 12

0900	4-113648	SUPPORTO	SUPPORT
0901	3-02994	LASER	LASER
0902	4-113078	CAVO ILLUMINATOR	CABLE
0903	4-113647	SCHEDA ILLUMINATORE	ILLUMINATOR BOARD
0904	4-113649	COPERCHIO	CASING

This image shows a full page of graph paper. It features a uniform grid of thin, light gray horizontal and vertical lines that intersect to form small squares across the entire surface. There are no margins, text, or other markings present.



Il disegno è realizzato con tutti i particolari ma solo quelli codificati sono forniti come ricambi. L'Azienda si riserva la facoltà di apportare modifiche senza preavviso.



Via per Carpi, n°9 - 42015 Correggio (RE) ITALY
Tel. ++39 0522 639111 - Fax ++39 0522 639150
www.corgi.com - info@corgi.com

The drawing shows all parts but only the coded parts are supplied as spares. The Company reserves the right to make modifications without prior notice.