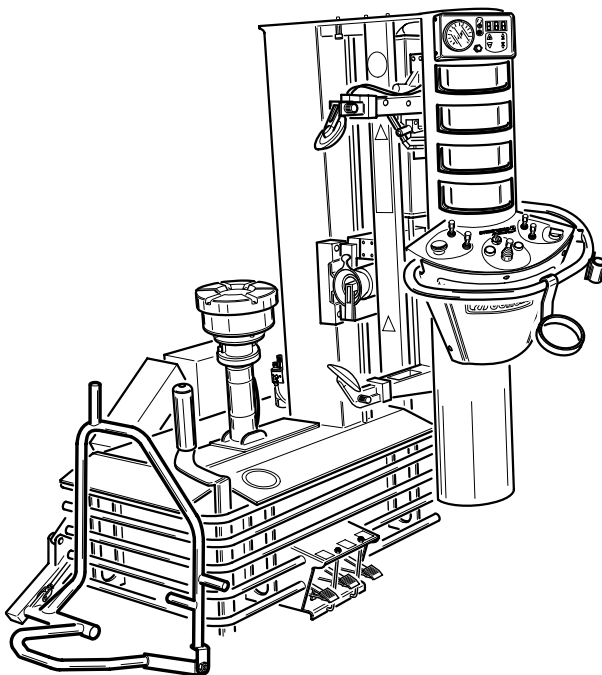


# ACCESSORI ORIGINALI

per smontagomme  
ARTIGLIO MASTER



Cod.463218  
Versione 2.0 del  
**10.2002**

Code 463218  
Release 2.0 of  
**10.2002**

# ORIGINAL ACCESSORIES

for tyre changers  
ARTIGLIO MASTER

# Legenda



Accessori di serie  
*Standard accessories*



Accessori a richiesta  
*Accessories optional*

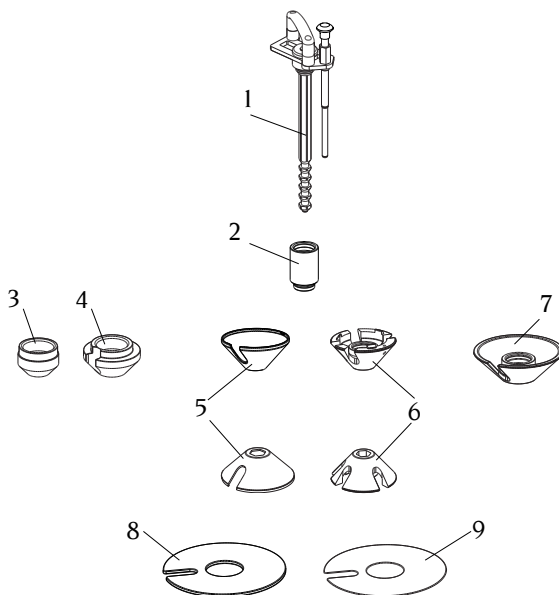
801xxxxxx

Accessori  
*Accessories*

900xxxxxx

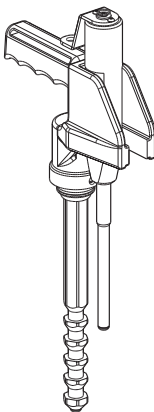
Ricambi  
*Spare parts*

Q.tà: nr 1  
Q.ty: 1



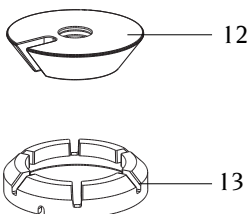
- |   |  |
|---|--|
| 1 | Maniglia bloccaggio universale ..... 900261623<br><i>Universal locking pistol</i>  |
| 2 | Prolunga per maniglia (M9) ..... 900263436<br><i>Extention for locking pistol</i>  |
| 3 | Cono Ø54 (M6) ..... 900462414<br><i>Cone Ø54 (M6)</i>  |
| 4 | Cono Ø75 (M5) ..... 900462415<br><i>Cone Ø75 (M5)</i>  |
| 5 | 2 Cuffie protezione cono Ø120 (M7) ..... 900461668<br><i>2 Protection cap for cone Ø120 (M7)</i>   |
| 6 | 2 Coni Ø120 (M1) ..... 900263161<br><i>2 Cones Ø120 (M1)</i>   |
| 7 | Cono Ø145 (M2) ..... 900362616<br><i>Cone Ø145 (M2)</i>  |
| 8 | Piatto appoggio cerchi rovesci (M8) ..... 900462098<br><i>Plastic support disc for reverse rim (M8)</i>  |
| 9 | Confezione da 24 fogli protezione cerchi<br>(da usarsi con M8) ..... 900462825<br><i>Package of 24 protection sheets (to be used whit the disc M8)</i> |

Q.tà: nr 1  
Q.ty: 1



**10      801261586      Maniglia bloccaggio rapido**  
***Quick Locking Pistol***

Q.tà: nr 1  
Q.ty: 1



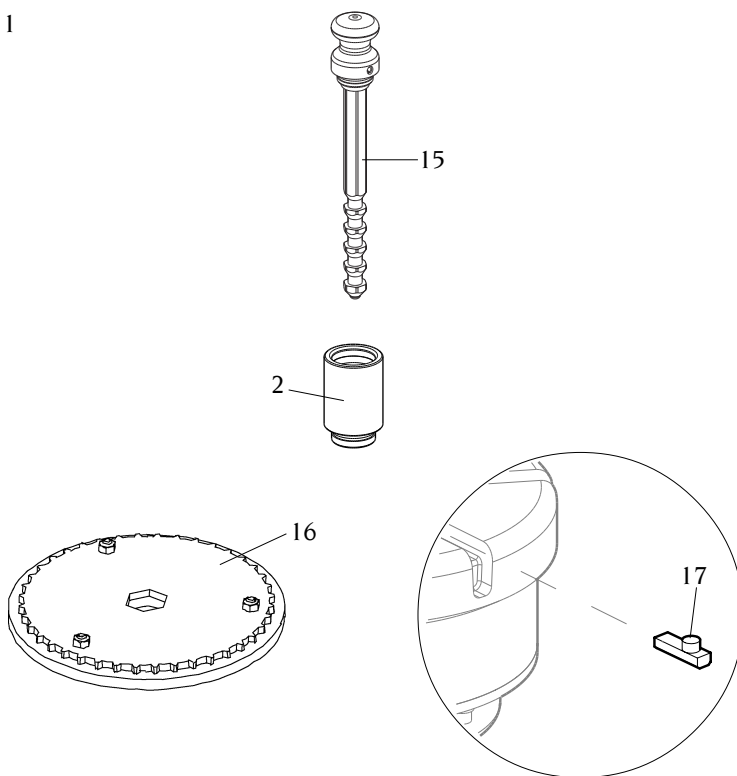
**11      801263124      Kit cerchi furgone**  
***Pick-up rim kit***

12	Cono Ø177 (M3) .....	900461667
	Cone Ø177 (M3)	
13	Anello distanziale (M10) .....	900263005
	Spacer ring (M10)	

## Locking kit for single hole & wire wheel rim

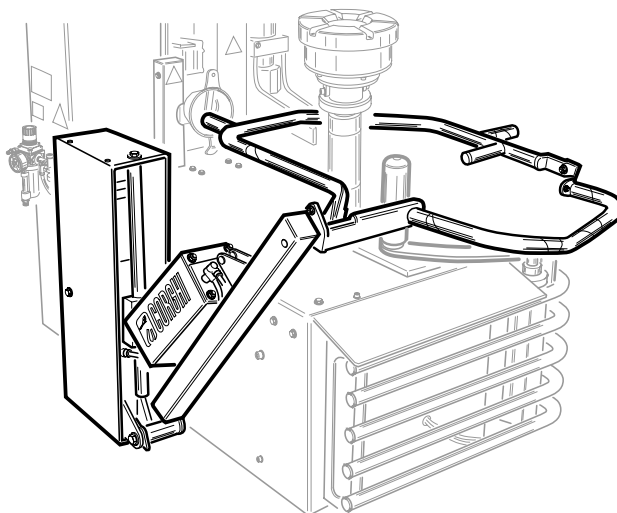
Q.tà: nr 1

Q.ty: 1



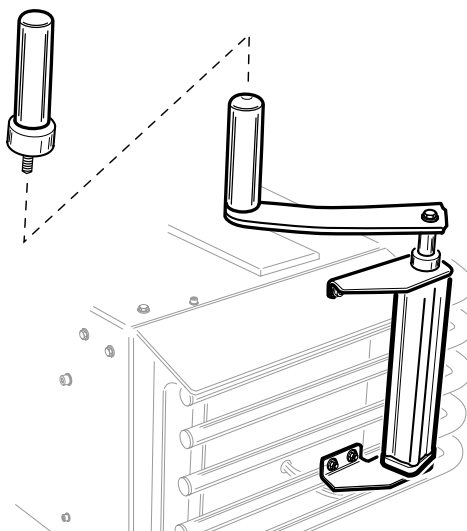
<b>14</b>	<b>801262781</b>	<b>Kit cerchi monoforo e Wire wheel</b> <i>Locking kit for single hole &amp; wire wheel rim</i>	
15	Maniglia per cerchi monoforo .....	900262468	
	<i>Single hole locking pistol</i>		
2	Prolunga per maniglia (M9) .....	900263436	
	<i>Extention for locking pistol</i>		
16	Fermo ruote "wire wheel" .....	900262755	
	<i>Wire wheel locking device</i>		
17	Fermo ruote a gallettone .....	900262347	
	<i>Locking device</i>		

Q.tà: nr 1  
Q.ty: 1



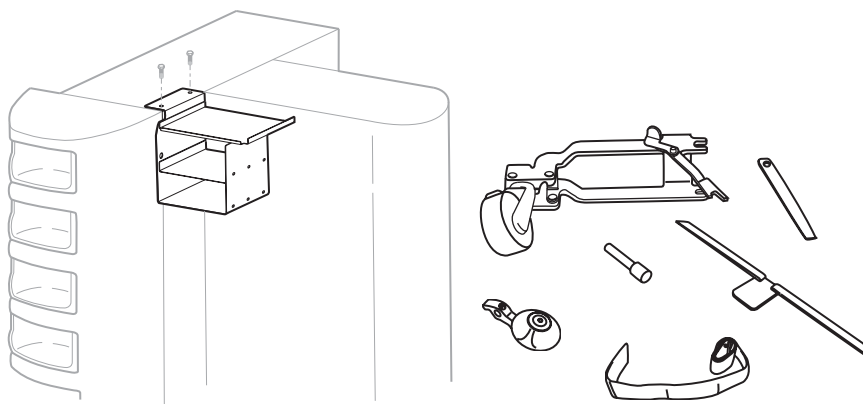
- 18      801260858      Kit sollevatore ruota**  
***Wheel lifter kit***

Q.tà: nr 1  
Q.ty: 1



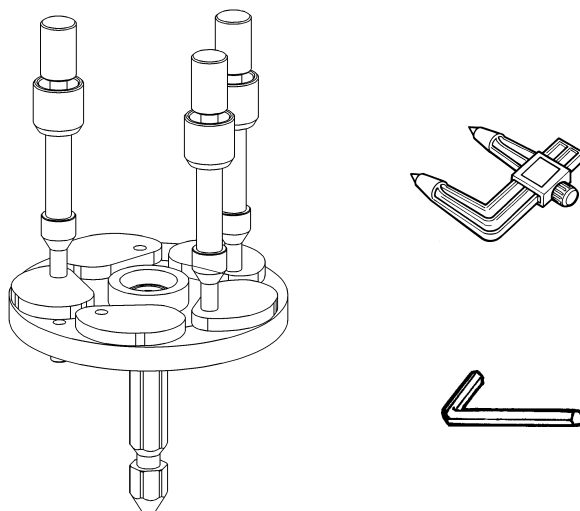
- 19      801260859      Kit alzatalloni**  
***Bead lifter kit***

Q.tà: nr 1  
Q.ty: 1



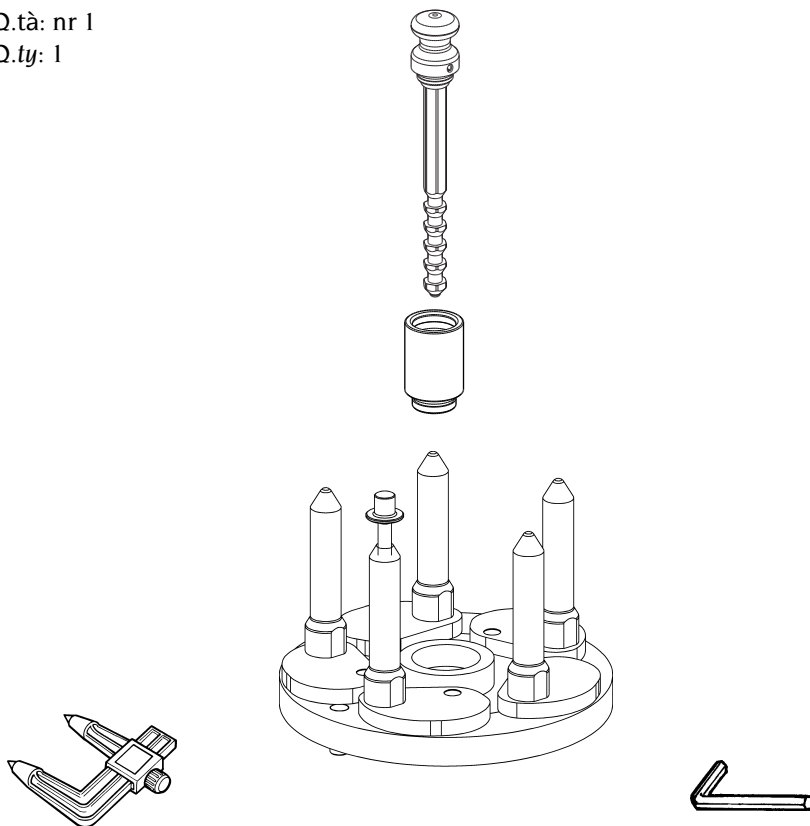
**20      801260860      Kit per ruote Pax**  
***Pax system kit for Artiglio Master***

Q.tà: nr 1  
Q.ty: 1



**21      801263085      Flangia universale cerchi ciechi**  
***Universal flange for close centre rims***

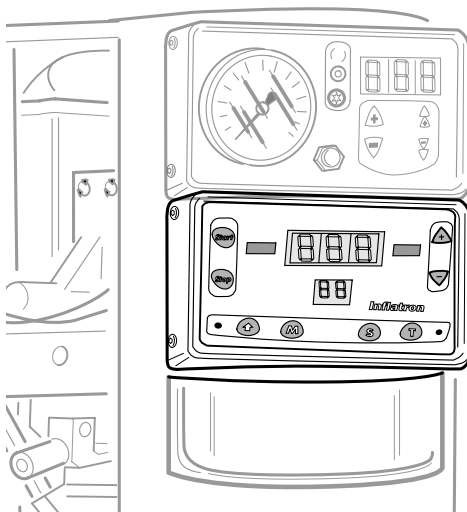
Q.tà: nr 1  
Q.ty: 1



- 33      801263419      Flangia per ruote rovescie  
Reverse wheel flange

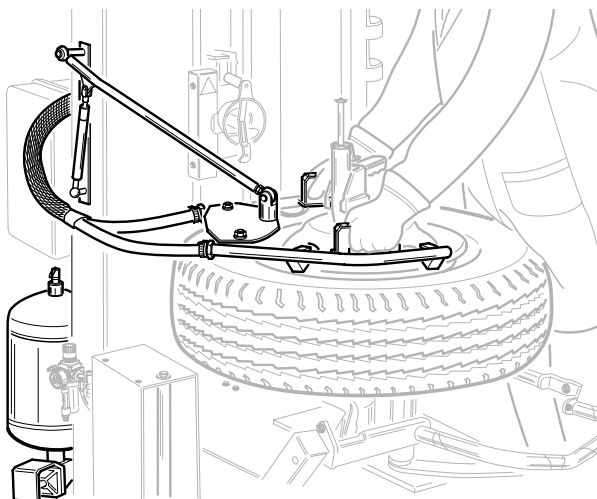


Q.tà: nr 1  
Q.ty: 1



- 22      801260960      **Gonfiatore elettronico: INFLATRON**  
*Inflating device: INFLATRON*

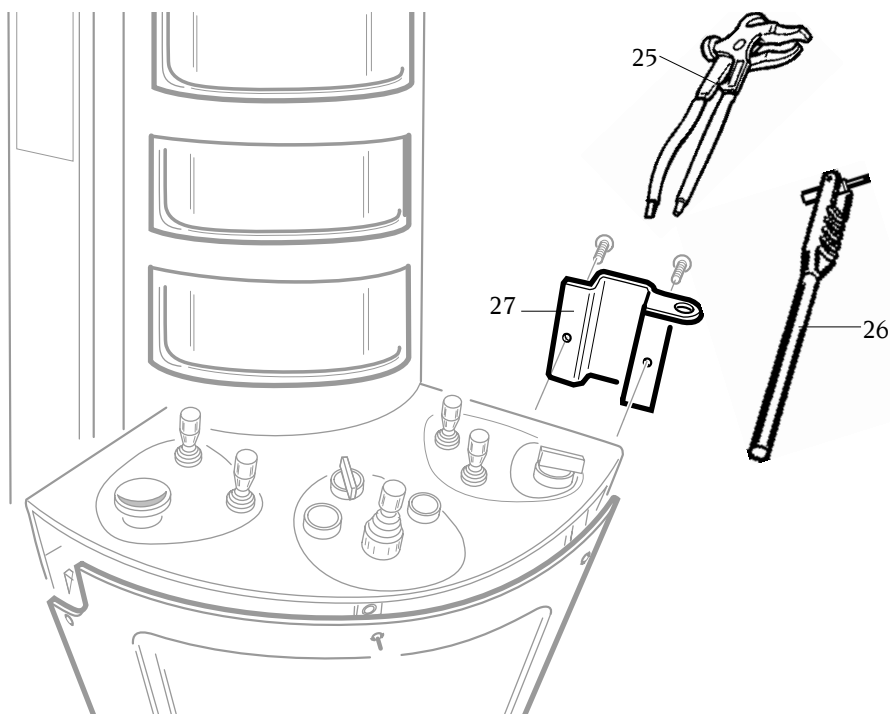
Q.tà: nr 1  
Q.ty: 1



- 23      801260961      **Gruppo gonfiaggio T.I.**  
*T.I system*

Q.tà: nr 1

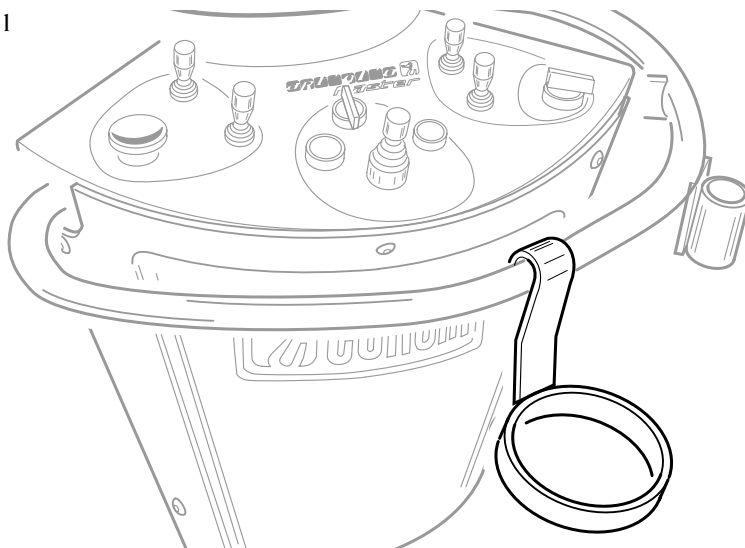
Q.ty: 1



- |    |           |   |
|----|-----------|---|
| 24 | 801263126 | <b>Supporto attrezzi con pinza per contrappesi e leva per valvola</b><br><b><i>Metal holder complete with weight pliers and valve lever</i></b> |
| 25 |           | Pinza per applicare o togliere contrappesi<br>dai cerchi ..... 900203841<br><i>Pliers for weight fixing and removing</i>                        |
| 26 |           | Leva per posizionare la valvola ..... 801461004<br><i>Valve-inserting lever</i>   |
| 27 |           | Supporto attrezzi ..... 900361271<br><i>Metal holder</i>  |

Q.tà: nr 1

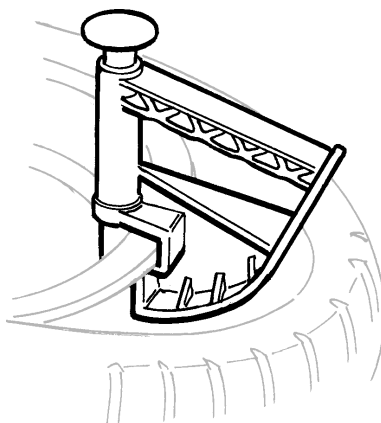
Q.ty: 1



- 28      801261060      Supporto per grasso 3.5 - 5 Kg**  
**3.5 - 5 Kg grease bucket holder**

Q.tà: nr 1

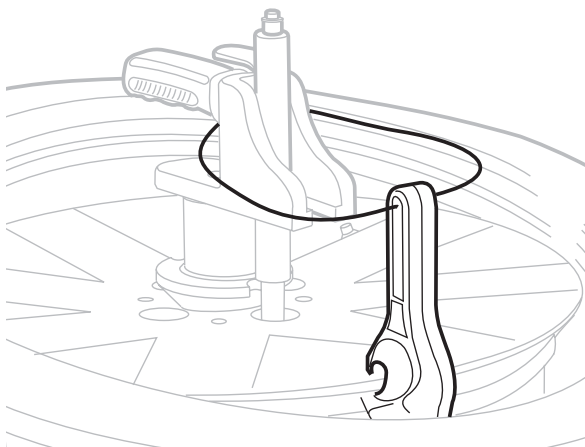
Q.ty: 1



- 29      801435685      Pinza in plastica**  
**Plastic bead pressing clamp**

Q.tà: nr 1

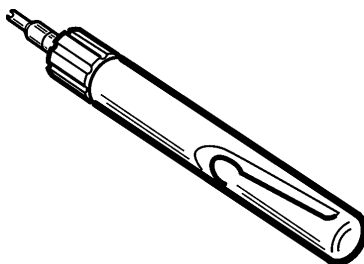
Q.ty: 1



- 30     801261910     Leva premitallone con cordino**  
***Plastic bead pressing lever whit cord***

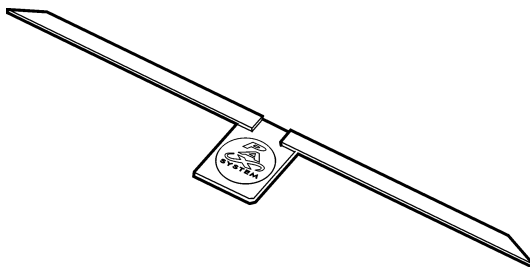
Q.tà: nr 1

Q.ty: 1



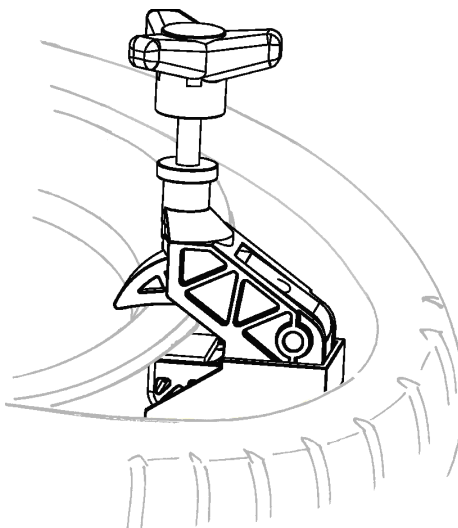
- 31     801461005     Attrezzo per svitare l'inserto valvola**  
***Valve core screwdriver***

Q.tà: nr 10  
Q.ty: 10



- 32      801260235      10 protezioni in plastica “reglette” per Pax System  
10 plastic Pax System protection “reglette”

Q.tà: nr 1  
Q.ty: 1



- 32      801262417      Pinza premitallone per pneumatici Run Flat  
Bead pressing clamp for Run Flat tyres

<b>Note</b>
-------------

[illegible]

<b>Note</b>
-------------

[illegible]



CORGHI S.p.A. - Strada Statale 468 n.9  
42015 CORREGGIO - R.E. - ITALY  
Tel. ++39 0522 639.111 - Fax ++39 0522 639.150  
[www.corghi.com](http://www.corghi.com) - [info@corghi.com](mailto:info@corghi.com)