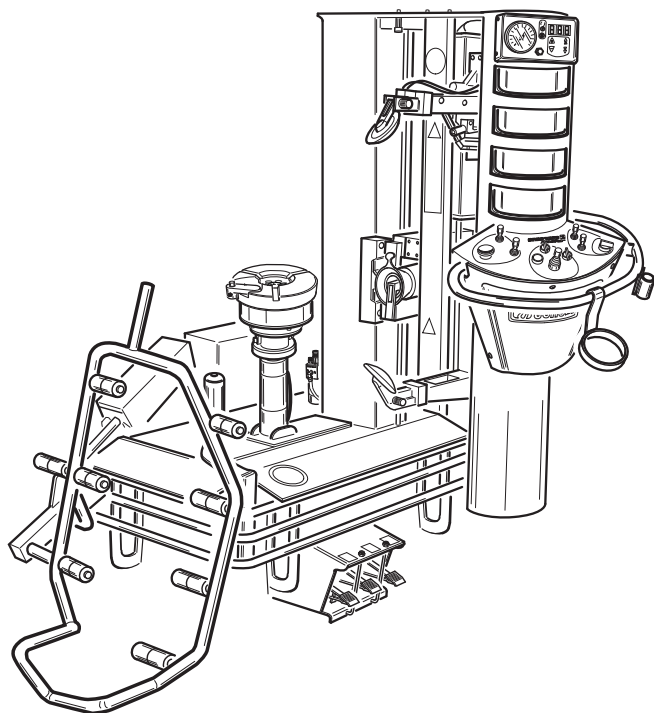


ACCESSORI ORIGINALI

per smontagomme
ARTIGLIO MASTER 26 MI

Cod. 4-102272H del 05/2013



ORIGINAL ACCESSORIES

for tyre changers
ARTIGLIO MASTER 26 MI

Legenda



Accessori di serie
Standard accessories



Accessori a richiesta
Accessories optional

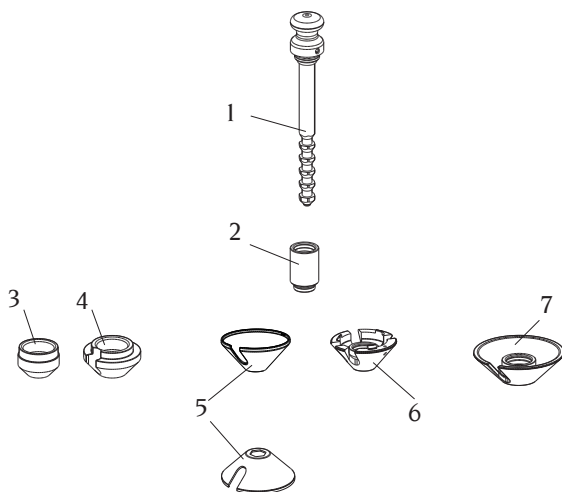
801XXX
8-XXX

Accessori
Accessories

900XXX

Ricambi
Spare parts

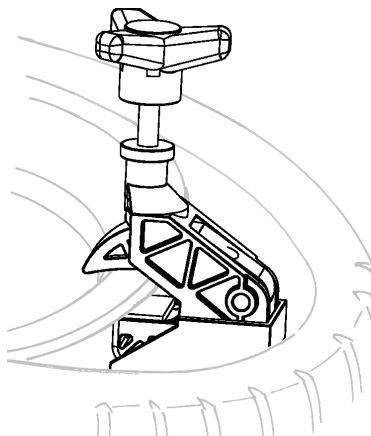
Q.tà: nr 1
Q.ty: 1



1	Maniglia multibloccaggio 9005-100683 <i>Universal locking pistol</i>
2	Prolunga per maniglia 900263436 <i>Extention for locking pistol</i>
3	Cono Ø54 (M6)..... 900462414 <i>Cone Ø54 (M6)</i>
4	Cono Ø75 (M5)..... 900462415 <i>Cone Ø75 (M5)</i>
5	2 Cuffie protezione cono Ø120 (M7) 900461668 <i>2 Protection cap for cone Ø120 (M7)</i>
6	2 Coni Ø120 (M11)..... 9004-102353 <i>2 Cones Ø120 (M11)</i>
7	Cono Ø145 (M2)..... 9004-102346 <i>Cone Ø145 (M2)</i>

Q.tà: nr 1

Q.ty: 1

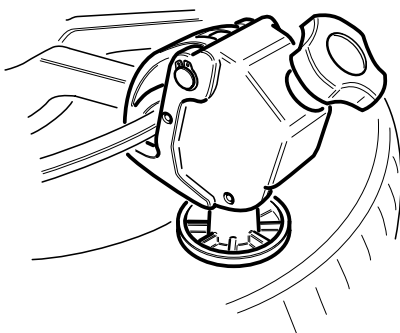


34 801262417

Pinza premitallone per pneumatici Run Flat
Bead pressing clamp for Run Flat tyres

Q.tà: nr 1

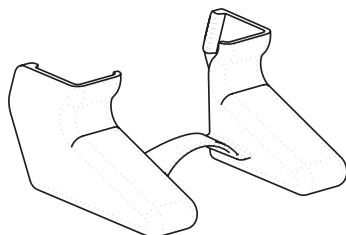
Q.ty: 1



35 8-11100120

Morsetto basculante
Sliding bead pressing clamp

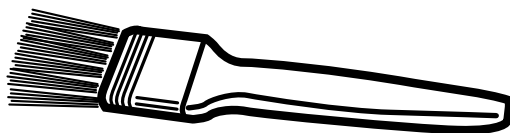
Q.tà: nr 6
Q.ty: 6



8-11100126

6 protezioni morsetto basculante (giallo)
6 protections for sliding bead pressing clamp (yellow)

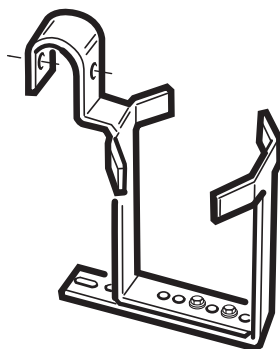
Q.tà: nr 1
Q.ty: 1



52 900415248

Pennello per grasso
Grease Brush

Q.tà: nr 1
Q.ty: 1



53 900261651 **Portagrasso universale**
Universal grease bucket holder

Q.tà: nr 1
Q.ty: 1



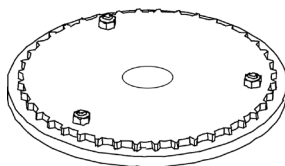
11 8-11100037 **Kit cerchi furgone**
Pick-up rim kit

12 Cono Ø187 (M3)..... 900461667
 Cone Ø187 (M3)

13 Anello distanziale (M10) 9005-100690
 Spacer ring (M10)

Q.tà: nr 1

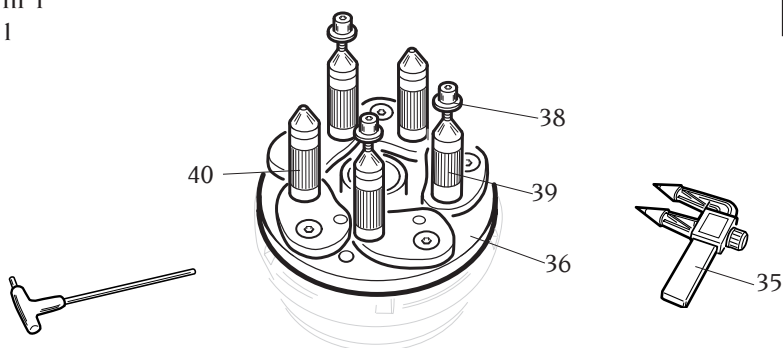
Q.ty: 1



- 16 8-11100009 **Kit "Wire Wheel" (da usare con il cod.9005-100683)**
"Wire Wheel" kit (to be used with code 9005-100683)

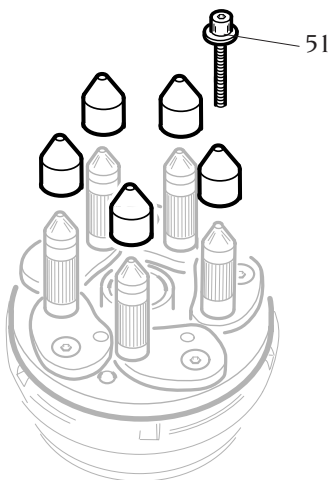
Q.tà: nr 1

Q.ty: 1



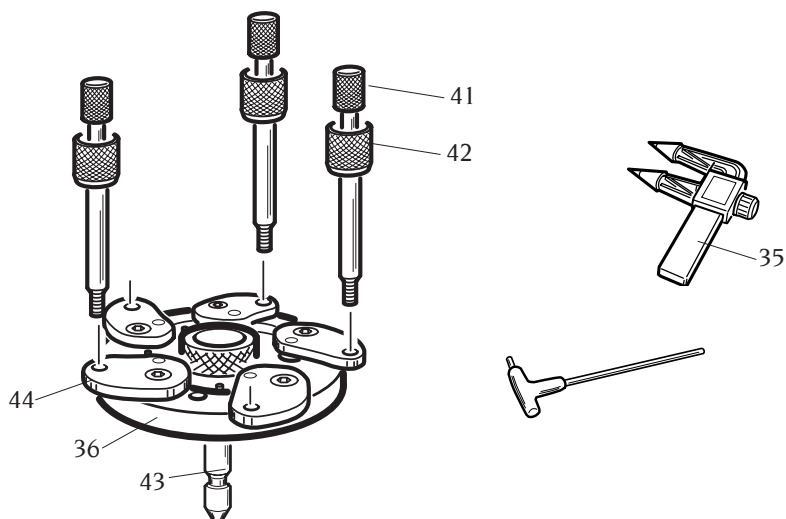
- 33 8-11100039 **Flangia per ruote a canale rovescie**
Reverse wheel flange
- 38 Ghiera di serraggio 9004-102377
 Ring nut
- 39 Colonneta con serraggio con biella..... 5-102721
 Column with locking device
- 40 Colonnette con biella..... 5-102720
 Columns with locking device
- 36 Flangia universale..... 5-102422
 Universal flange
- 35 Rilevatore fori..... 900441286
 Hole detector

Q.tà: nr 1
Q.ty: 1



- 14 8-11100046 **Kit estensioni per flangia per ruote a canale rovescie e cieche**
(da utilizzare esclusivamente con i seguenti codici 8-11100039,
8-11100040 e 8-11100038)
Extension kit for reverse and closed wheel (to be used with the
accessories code 8-11100039, 8-11100040 and 8-11100038
only)
- 51 Ghiera di serraggio lunga9004-102566
Long ring nut

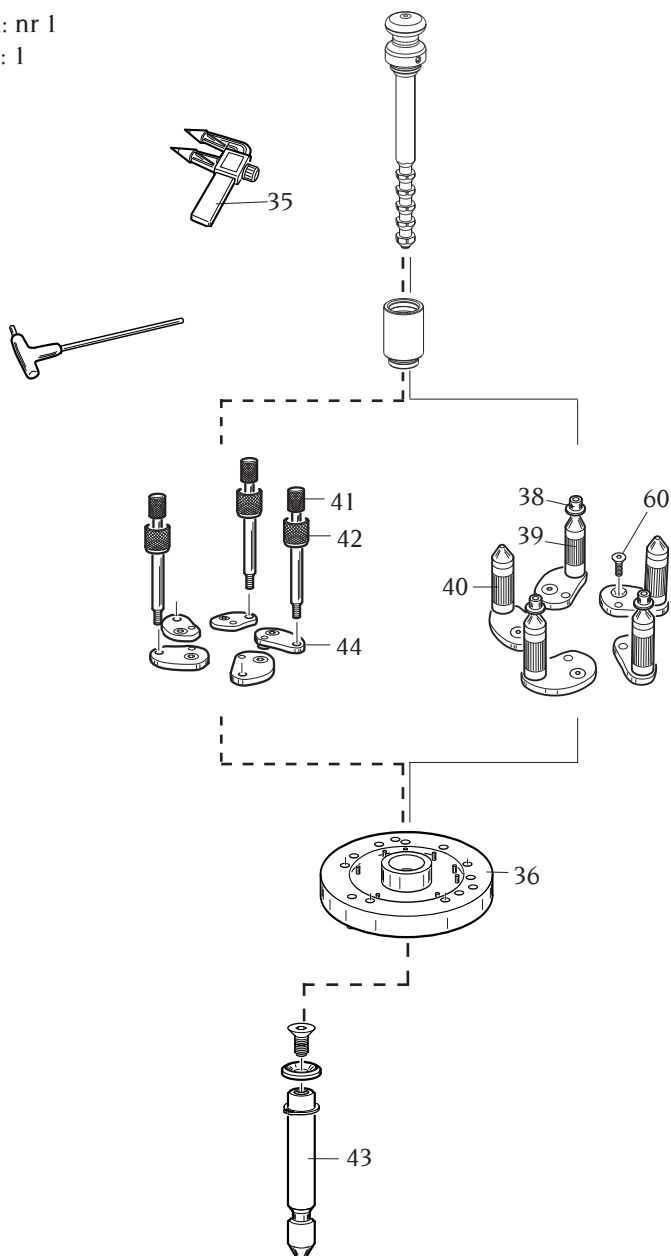
Q.tà: nr 1
Q.ty: 1



21	8-11100038	Flangia universale cerchi ciechi Universal flange for close centre rims	
41	Vite fissaggio cerchi	Rim fixing screw	900361647
42	Ghiera fissaggio cerchi	Rim fixing ring nut	900361648
43	Barra attacco platorello	Exagonal bar	9004-102372
44	Biella.....	Connecting rod	4-107023
36	Flangia universale.....	Universal flange	5-102422
35	Rilevatore fori.....	Hole detector	900441286

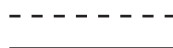
Q.tà: nr 1

Q.ty: 1



Cerchi ciechi / Close centre rim

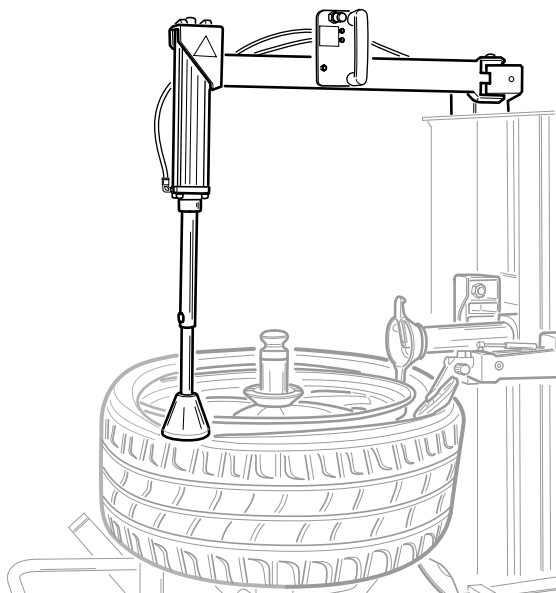
Cerchi rovesci / Reverse rim



49	8-11100040	Kit ruote NON STANDARD Not STANDARD rim kit	
38		Ghiera di serraggio <i>Ring nut</i>	9004-102377
39		Colonneta con serraggio con biella..... <i>Column with locking device</i>	5-102721
40		Colonnette con biella..... <i>Columns with locking device</i>	5-102720
36		Flangia universale..... <i>Universal flange</i>	5-102422
41		Vite fissaggio cerchi ciechi..... <i>Rim fixing screw</i>	900361647
42		Ghiera fissaggio cerchi ciechi..... <i>Rim fixing ring nut</i>	900361648
43		Barra attacco platorello..... <i>Exagonal bar</i>	9004-102372
44		Biella <i>Connecting rod</i>	4-107023
35		Rilevatore fori..... <i>Hole detector</i>	900441286
60		Vite fissaggio bielle <i>Fixing screw for connecting rod</i>	9004-101250

Q.tà: nr 1

Q.ty: 1

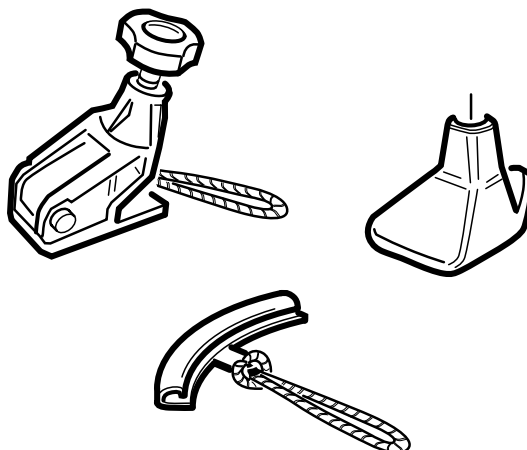


48 801263408

Premitalone pneumatico
Pneumatic bead pressing tool

Q.tà: nr 1

Q.ty: 1

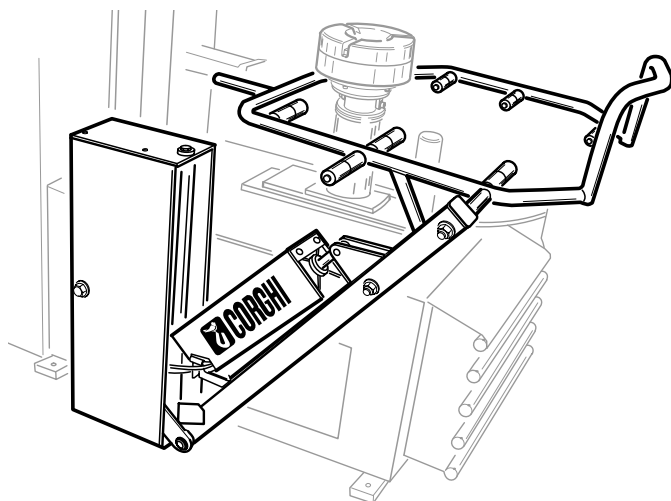


8-11100166

Kit Run Flat
Kit Run Flat

Q.tà: nr 1

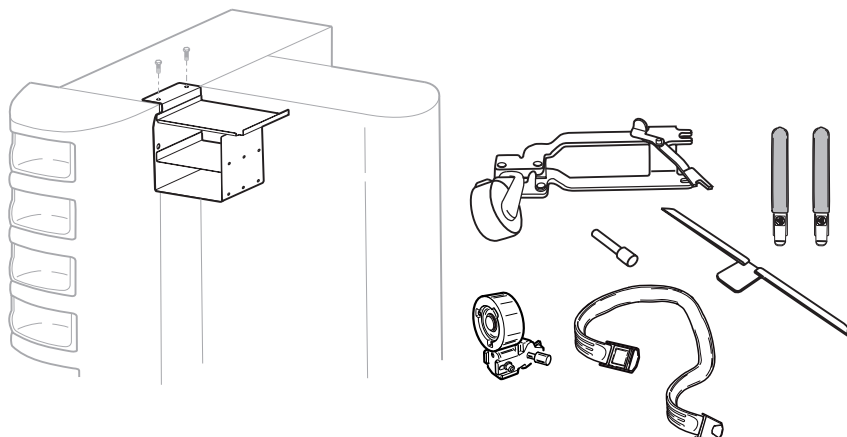
Q.ty: 1



- 18 8-11100082 **Kit sollevatore ruota 26"**
Wheel lifter kit 26"

Q.tà: nr 1

Q.ty: 1



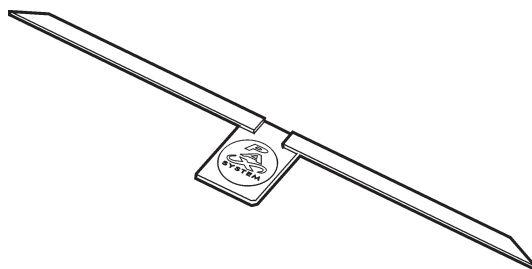
20 801260860

Kit per ruote Pax

Pax system kit for Artiglio Master

Q.tà: nr 10

Q.ty: 10

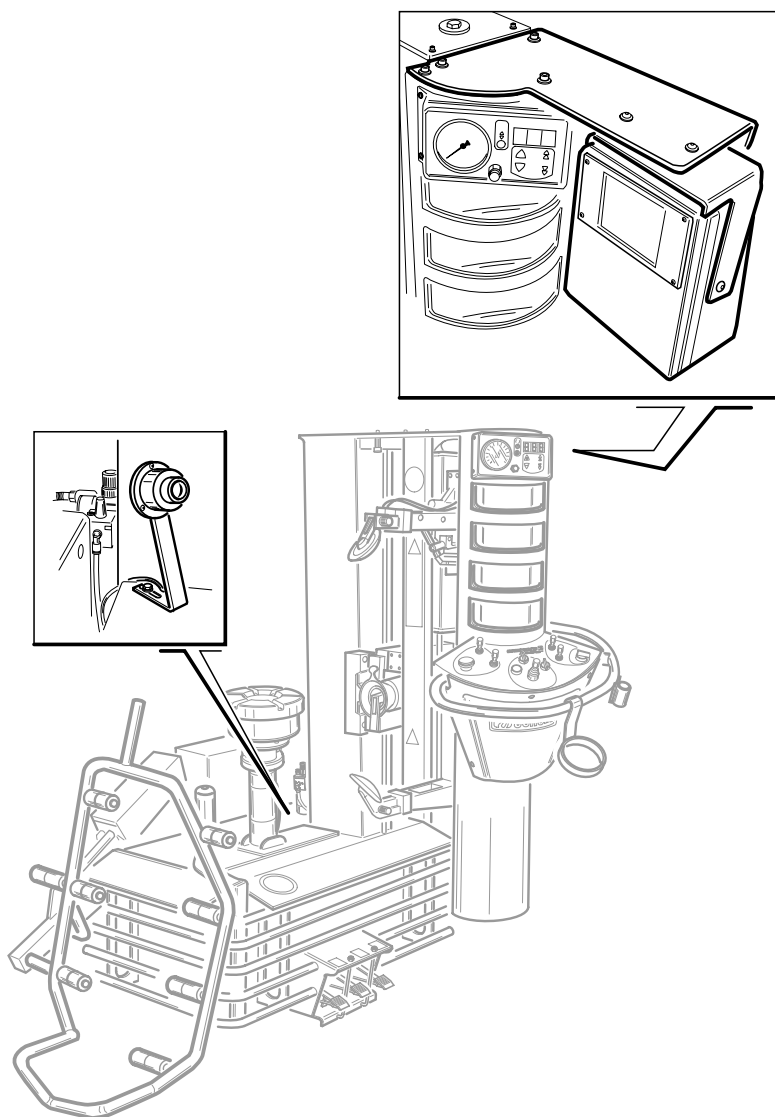


32 801260235

10 protezioni in plastica "reglette" per Pax System

10 plastic Pax System protection "reglette"

Q.tà: nr 1
Q.ty: 1

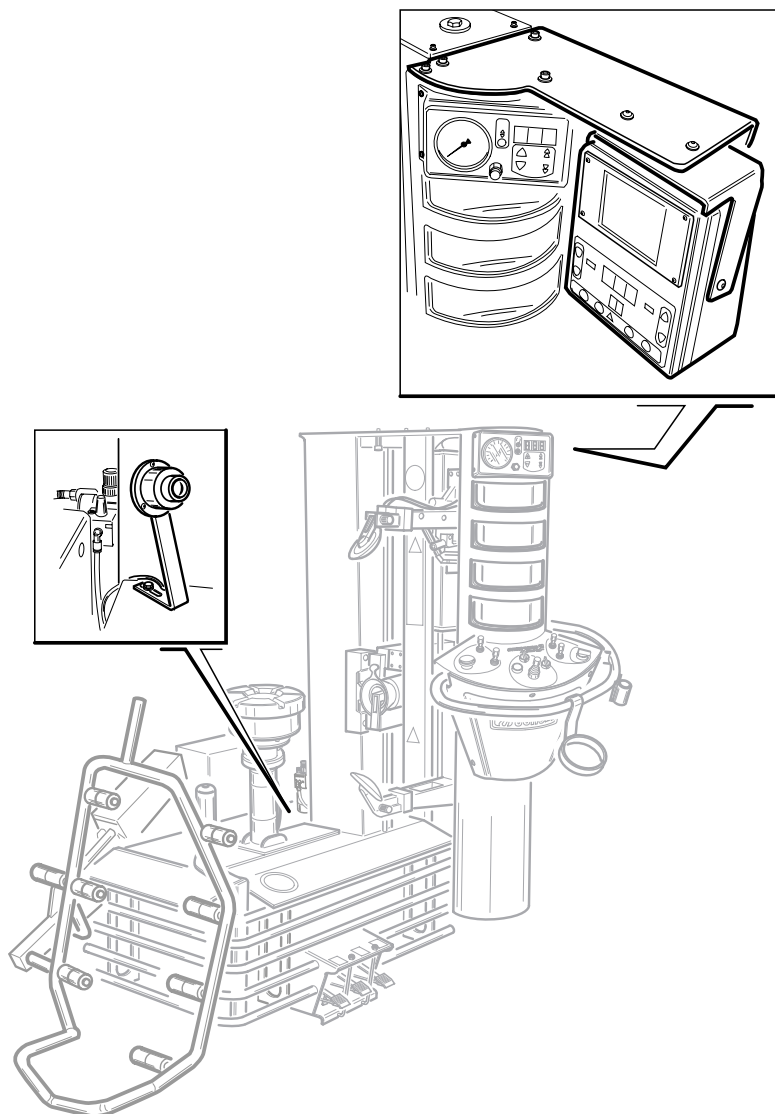


50

Telecamera (ordinabile solo con la macchina)
Lower view camera (available whith the machine only)

Q.tà: nr 1

Q.ty: 1



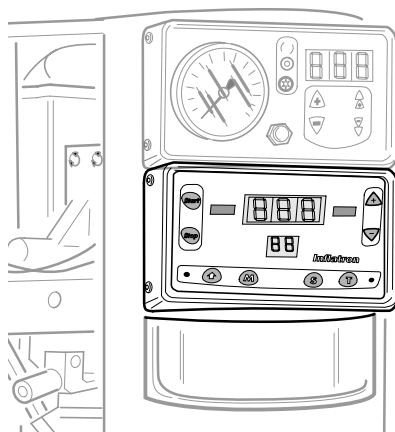
50

Telecamera + gonfiatore elettronico inflatron (ordinabile solo con la macchina)

Lower view camera and electronic inflating device (available with the machine only)

Q.tà: nr 1

Q.ty: 1



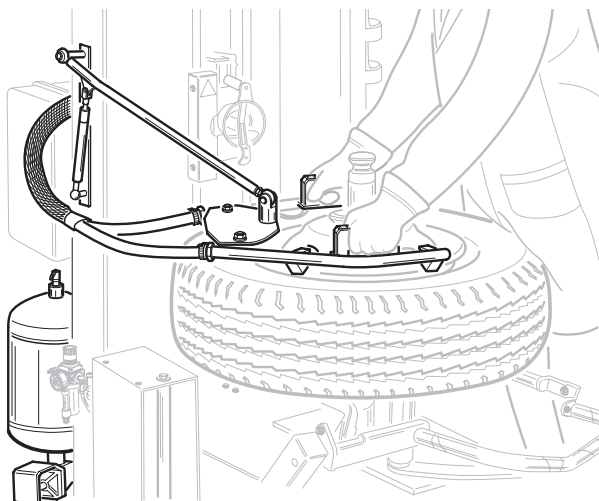
22

Kit gonfiatore elettronico: INFLATRON (ordinabile solo con la macchina)

Electronic Inflating device kit: INFLATRON (available with the machine only)

Q.tà: nr 1

Q.ty: 1

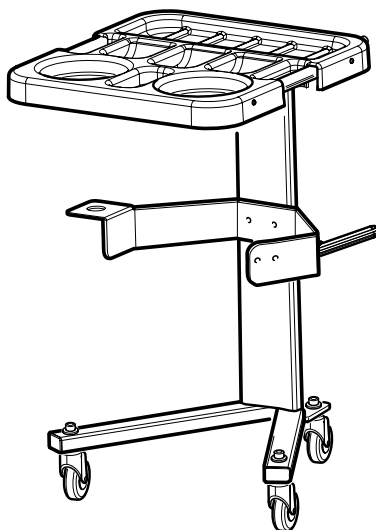


23 801260961

Kit intallamento rapido: T.I system CE
T.I system kit CE

Q.tà: nr 1

Q.ty: 1

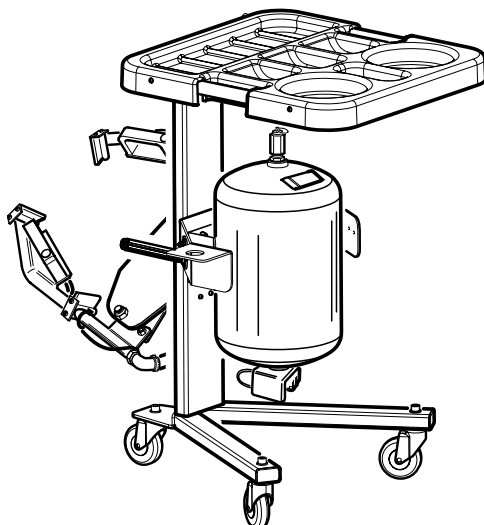


0-51100101/16

EasyTrolley carrello porta accessori
Accessory-holder EasyTrolley

Q.tà: nr 1

Q.ty: 1



0-51100102/16

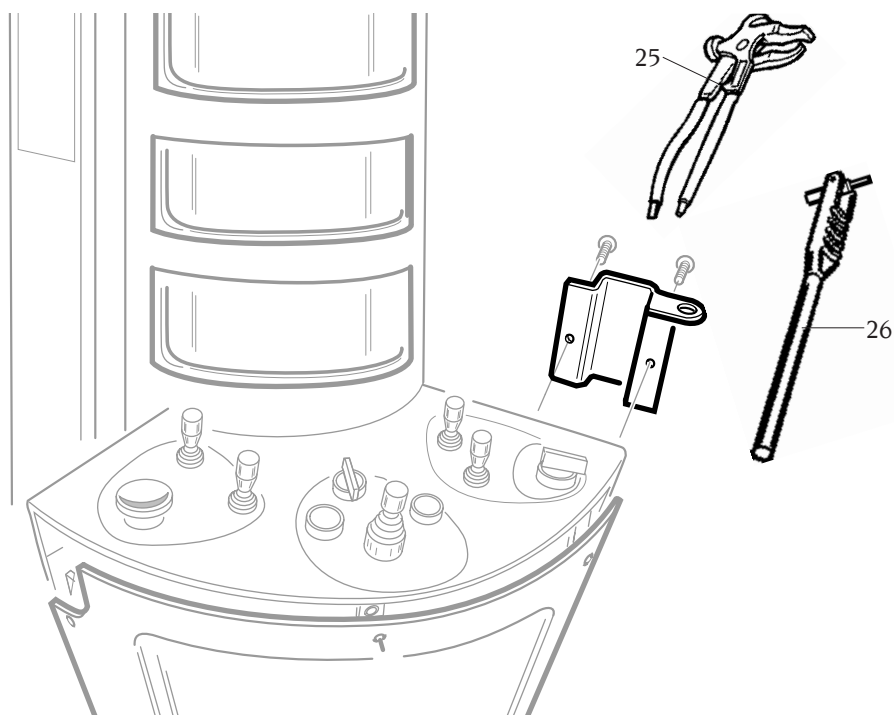
EasyTrolley carrello porta accessori + T.I. system CE
Accessory-holder EasyTrolley + T.I. system CE

0-51100103/16

EasyTrolley carrello porta accessori + T.I. system ASME (solo per mercato USA)
Accessory-holder EasyTrolley + T.I. system ASME (for USA market only)

Q.tà: nr 1

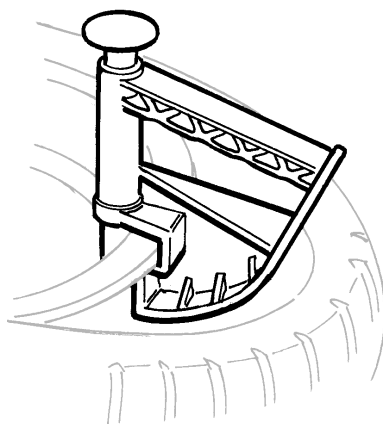
Q.ty: 1



- | | | |
|----|------------------|---|
| 24 | 801263126 | Supporto attrezzi con pinza per contrappesi e leva per valvola
<i>Metal holder complete with weight pliers and valve lever</i> |
| 25 | | Pinza per applicare o togliere contrappesi
dai cerchi..... 900203841
<i>Pliers for weight fixing and removing</i> |
| 26 | | Leva per posizionare la valvola 801461004
<i>Valve-inserting lever</i> |
| 27 | | Supporto attrezzi 900361271
<i>Metal holder</i> |

Q.tà: nr 1

Q.ty: 1



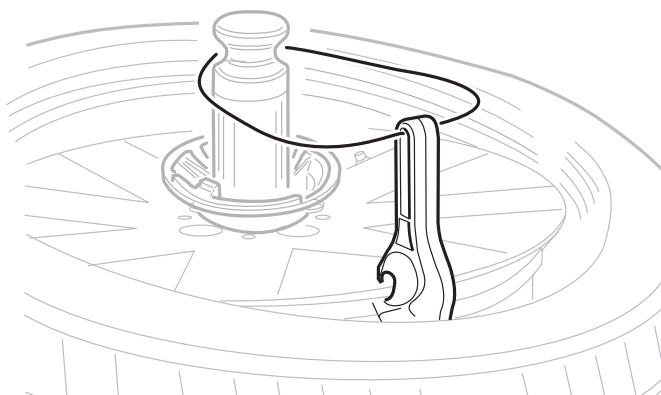
29 801435685

Pinza in plastica

Plastic bead pressing clamp

Q.tà: nr 1

Q.ty: 1

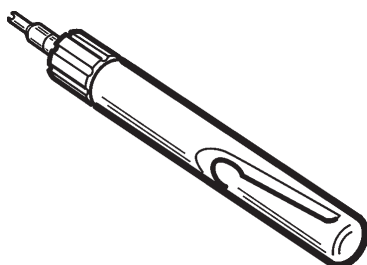


30 801261910

Leva premitallone con cordino

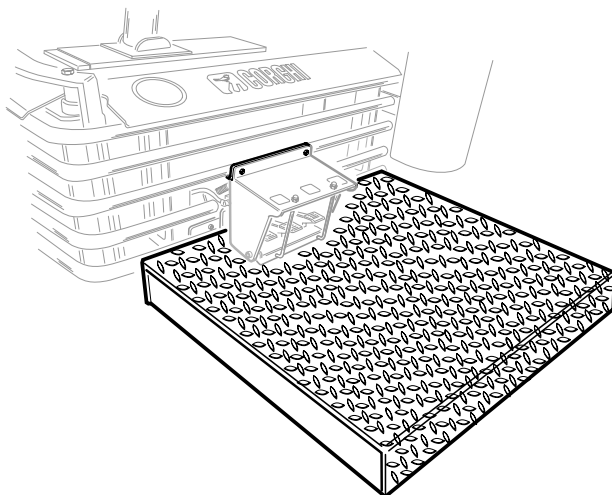
Plastic bead pressing lever whit cord

Q.tà: nr 1
Q.ty: 1



31 801461005 **Attrezzo per svitare l'inserto valvola**
Valve core screwdriver

Q.tà: nr 1
Q.ty: 1



45 8-11100023 **Kit pedana da 110 mm**
Platform kit of 110 mm

Note

[illegible]

Note

[illegible]



CORGHI S.p.A. - Via per Carpi n.9
42015 CORREGGIO - R.E. - ITALY
Tel. ++39 0522 639.111 - Fax ++39 0522 639.150
www.corghi.com - info@corghi.com

COMIM - Cod. 4-102272H - 05/2013