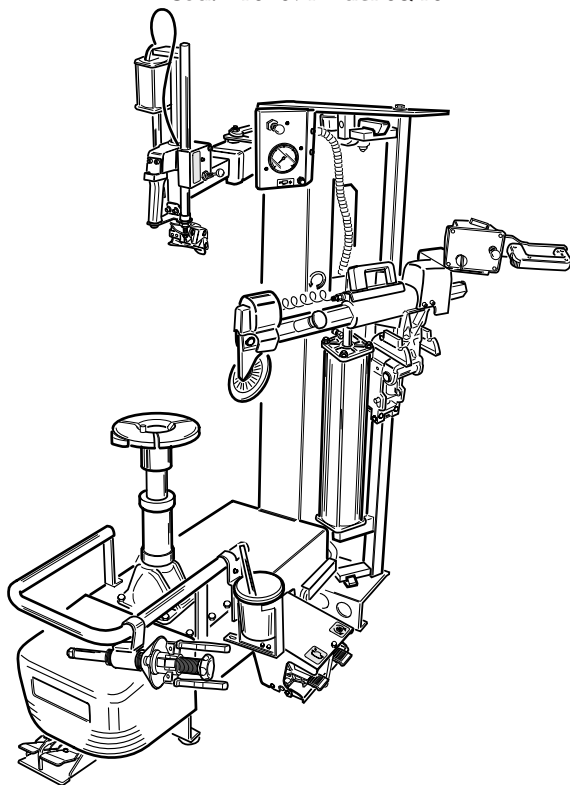


# ACCESSORI ORIGINALI

per smontagomme

ARTIGLIO 50

Cod.4-104091D del 06/10



# ORIGINAL ACCESSORIES

for tyre changers

ARTIGLIO 50



# Legenda

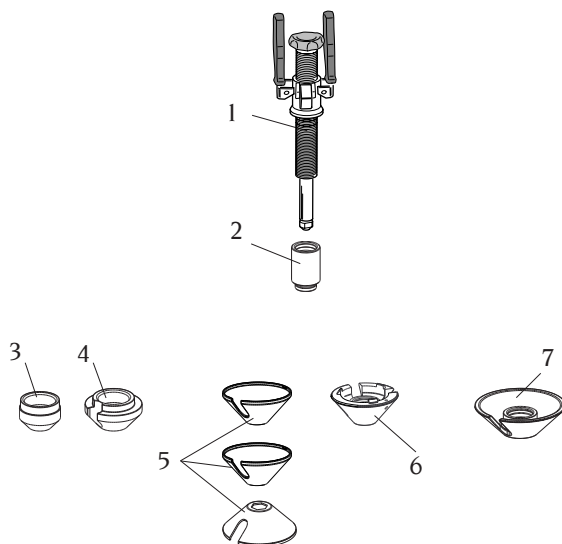


Accessori di serie  
*Standard accessories*



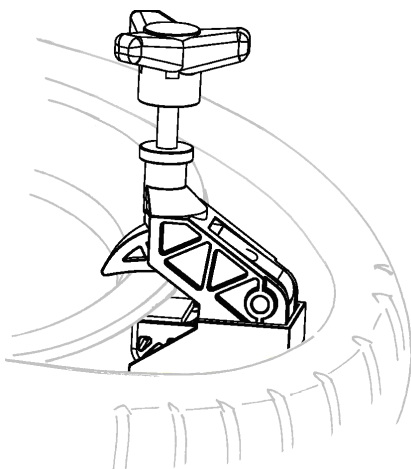
Accessori a richiesta  
*Accessories optional*

Q.tà: nr 1  
Q.ty: 1



- |   |                                                                                                    |
|---|----------------------------------------------------------------------------------------------------|
| 1 | Maniglia completa ..... 9005-101197<br><i>Universal locking pistol</i>                             |
| 2 | Prolunga per maniglia (M9) ..... 9005-101204<br><i>Extention for locking pistol (M9)</i>           |
| 3 | Cono Ø58 (M13)..... 9004-103235<br><i>Cone Ø58 (M13)</i>                                           |
| 4 | Cono Ø75 (M14)..... 9004-103234<br><i>Cone Ø75 (M14)</i>                                           |
| 5 | 3 Cuffie protezione cono Ø120 (M7) ..... 9004-103232<br><i>3 Protection cap for cone Ø120 (M7)</i> |
| 6 | 1 Cono Ø120 (M11)..... 9004-103230<br><i>1 Cone Ø120 (M11)</i>                                     |
| 7 | Cono Ø145 (M2)..... 9004-103229<br><i>Cone Ø145 (M2)</i>                                           |

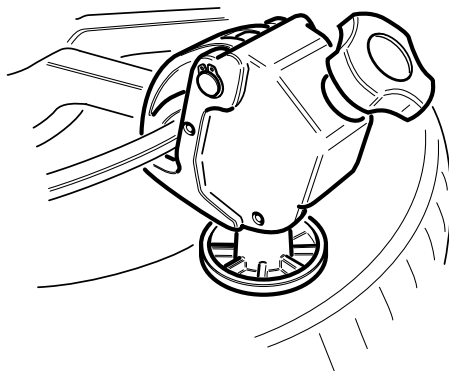
Q.tà: nr 2  
Q.ty: 2



801262417

**Pinza premitallone per pneumatici Run Flat**  
*Bead pressing clamp for Run Flat tyres*

Q.tà: nr 1  
Q.ty: 1

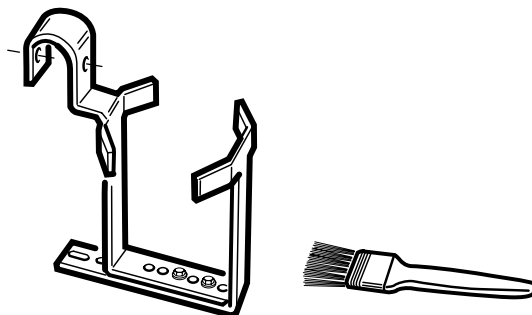


8-11100120

**Morsetto basculante**  
*Sliding bead pressing clamp*

Q.tà: nr 1

Q.ty: 1

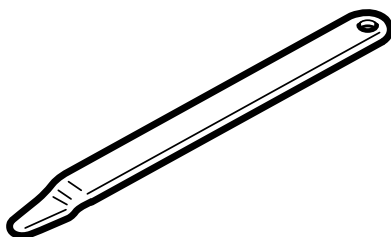


9005-101236

**Portagrasso universale**  
*Universal grease bucket holder*

Q.tà: nr 1

Q.ty: 1

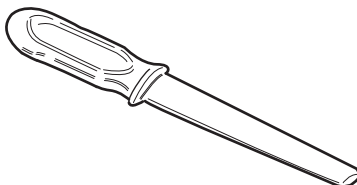


9004-105142

**Help manuale**  
*Manual Help*

Q.tà: nr 2

Q.ty: 2



4-405496

**Help plastica**  
*Plastic Help*

Q.tà: nr 1  
Q.ty: 1

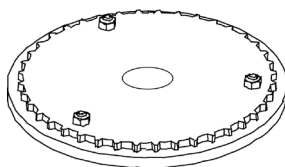


8-11100086

**Kit cerchi furgone**  
**Pick-up rim kit**

12	Cono Ø187 (M15).....	9004-103233
	Cone Ø187 (M15)	
13	Anello distanziale (M10) .....	9005-100690
	Spacer ring (M10)	

Q.tà: nr 1  
Q.ty: 1

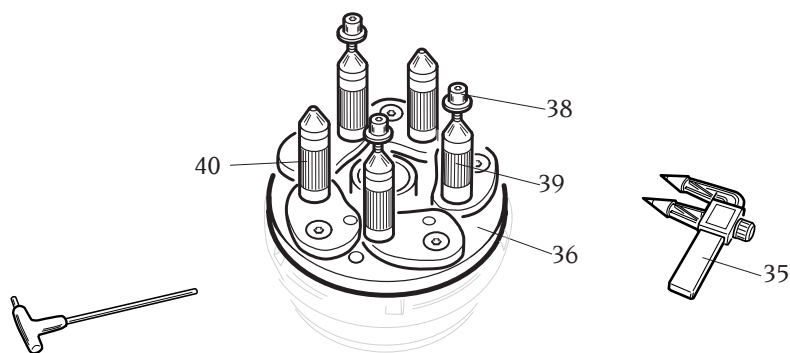


8-11100009

**Kit "Wire Wheel" (da usare con il cod.9005-101197)**  
**"Wire Wheel" kit (to be used with code 9005-101197)**

Q.tà: nr 1

Q.ty: 1



#### 8-11100039

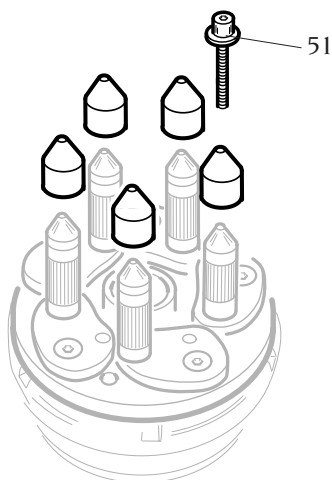
#### Flangia per ruote a canale rovescie

#### *Reverse wheel flange*

38	Ghiera di serraggio .....	9004-102377
	<i>Ring nut</i>	
39	Colonna con serraggio con biella.....	5-102721
	<i>Column with locking device</i>	
40	Colonnelle con biella.....	5-102720
	<i>Columns with locking device</i>	
36	Flangia universale.....	5-102422
	<i>Universal flange</i>	
35	Rilevatore fori.....	900441286
	<i>Hole detector</i>	

Q.tà: nr 1

Q.ty: 1



**8-11100046**

**Kit estensioni per flangia per ruote a canale rovescie e cieche  
(da utilizzare esclusivamente con i seguenti codici 8-11100039,  
8-11100087 e 8-11100110)**

***Extension kit for reverse and closed wheel (to be used with the accessories  
code 8-11100039, 8-11100087 and code 8-11100110)***

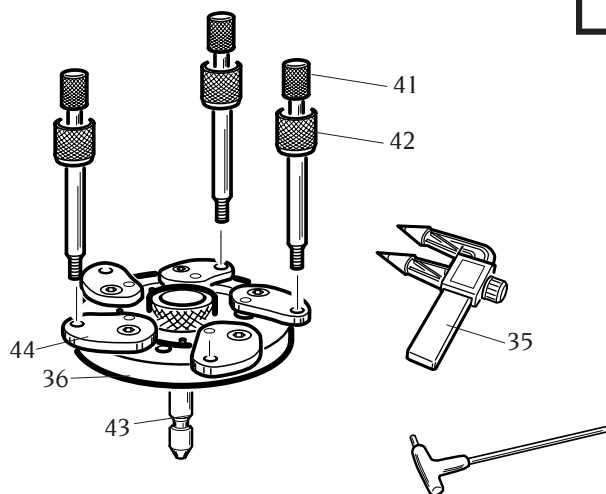
51

Ghiera di serraggio lunga ..... 9004-102566  
*Long ring nut*



Q.tà: nr 1

Q.ty: 1



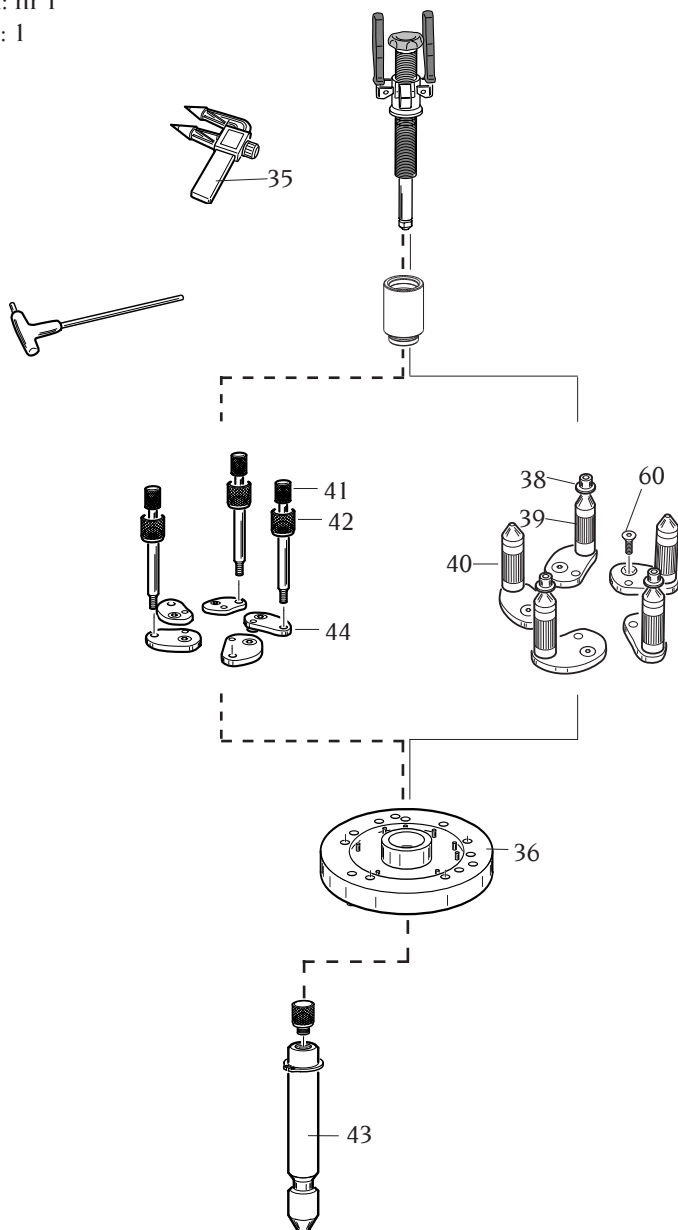
**8-11100087**

**Flangia universale cerchi ciechi**  
**Universal flange for close centre rims**

38	Ghiera di serraggio .....	9004-102377
	<i>Ring nut</i>	
41	Vite fissaggio cerchi .....	900361647
	<i>Rim fixing screw</i>	
42	Ghiera fissaggio cerchi .....	900361648
	<i>Rim fixing ring nut</i>	
43	Barra attacco platorello .....	9004-103765
	<i>Exagonal bar</i>	
44	Biella.....	4-107023
	<i>Connecting rod</i>	
36	Flangia universale.....	5-102422
	<i>Universal flange</i>	
35	Rilevatore fori.....	900441286
	<i>Hole detector</i>	

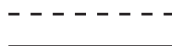
Q.tà: nr 1

Q.ty: 1



Cerchi ciechi / Close centre rim

Cerchi rovesci / Reverse rim

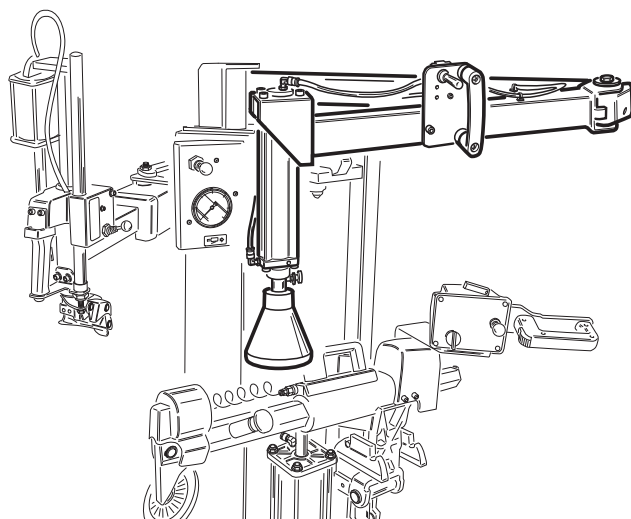


**8-11100110****Kit ruote NON STANDARD****Not STANDARD rim kit**

38	Ghiera di serraggio .....	9004-102377
	<i>Ring nut</i>	
39	Colonna con serraggio con biella.....	5-102721
	<i>Column with locking device</i>	
40	Colonnelle con biella.....	5-102720
	<i>Columns with locking device</i>	
36	Flangia universale.....	5-102422
	<i>Universal flange</i>	
41	Vite fissaggio cerchi ciechi.....	900361647
	<i>Rim fixing screw</i>	
42	Ghiera fissaggio cerchi ciechi .....	900361648
	<i>Rim fixing ring nut</i>	
43	Barra attacco platorello .....	9004-103765
	<i>Exagonal bar</i>	
44	Biella .....	4-107023
	<i>Connecting rod</i>	
35	Rilevatore fori.....	900441286
	<i>Hole detector</i>	
60	Vite fissaggio bielle .....	9004-101250
	<i>Connecting rod fixing screw</i>	

Q.tà: nr 1

Q.ty: 1



8-11100097

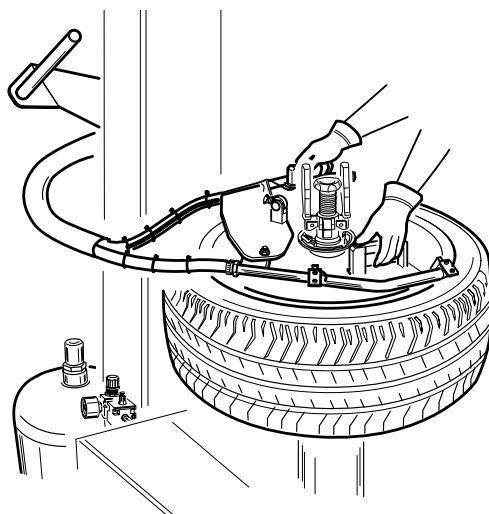
**Premitalлоне pneumatico**  
*Pneumatic bead pressing tool*

8-11100112

**Premitalлоне pneumatico (solo per mercato USA)**  
*Pneumatic bead pressing tool (for USA market only)*

Q.tà: nr 1

Q.ty: 1

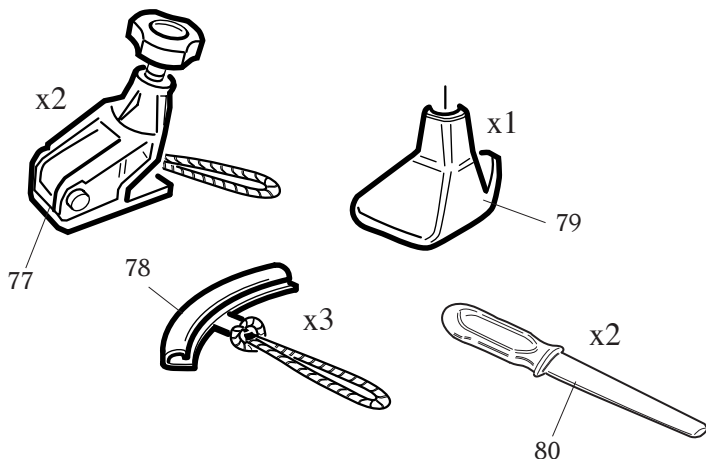


8-11100111

**Kit intallonamento rapido: T.I. system**  
*T.I. system kit*

Q.tà: nr 1

Q.ty: 1



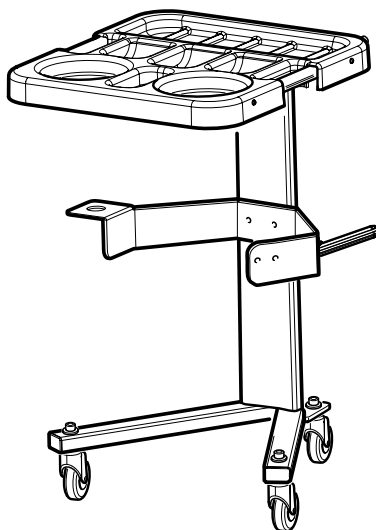
**8-11100190**

**Kit Run Flat**  
**Kit Run Flat**

77	Morsetto antislittamento .....	801262417
	<i>Plastic bead pressing clamp</i>	
78	Serie di 3 protezioni bordo cerchio.....	2201716
	<i>Rim edge plastic protections (3 pcs.)</i>	
79	Premitalлоне sagomato .....	4-106888
	<i>Shaped bead pressing device</i>	
80	Help plastica .....	4-405496
	<i>Plastic Help</i>	

Q.tà: nr 1

Q.ty: 1

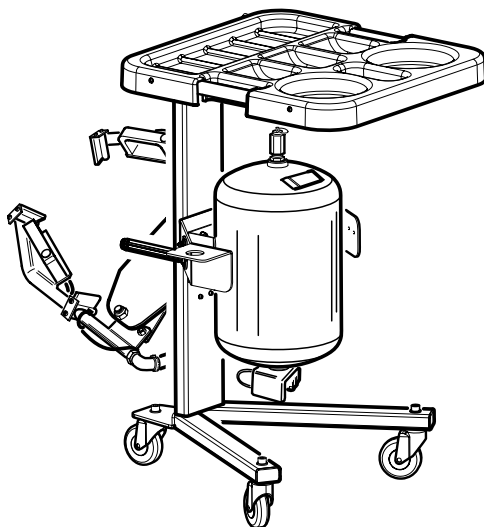


0-51100101/16

**EasyTrolley carrello porta accessori**  
**Accessory-holder EasyTrolley**

Q.tà: nr 1

Q.ty: 1



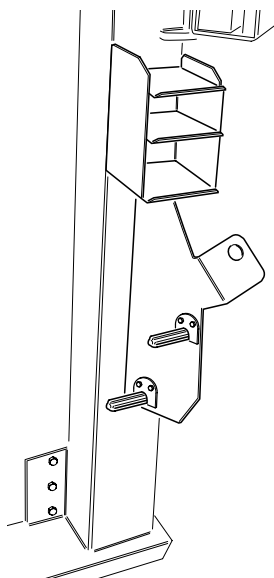
0-51100102/16

**EasyTrolley carrello porta accessori + T.I. system CE**  
**Accessory-holder EasyTrolley + T.I. system CE**

0-51100103/16

**EasyTrolley carrello porta accessori + T.I. system ASME (solo per mercato USA)**  
**Accessory-holder EasyTrolley + T.I. system ASME (for USA market only)**

Q.tà: nr 1  
Q.ty: 1

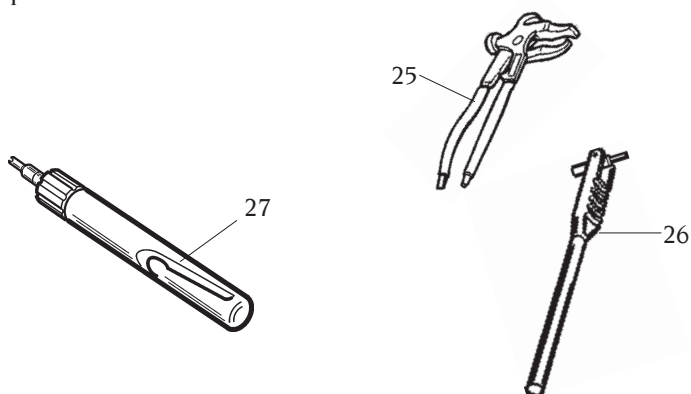


**8-11100089**

**Porta accessori posteriore**  
***Rear accessory holder***

Q.tà: nr 1

Q.ty: 1



25

Pinza per applicare o togliere contrappesi

dai cerchi..... 900203841

*Pliers for weight fixing and removing*

26

Leva per posizionare la valvola ..... 801461004

*Valve-inserting lever*

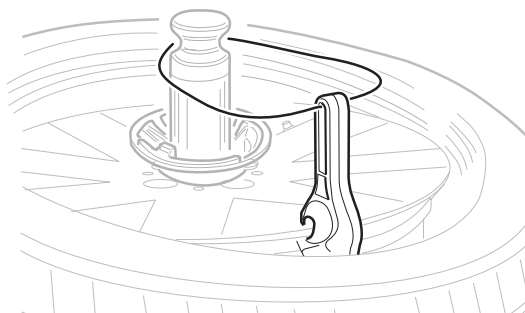
27

Attrezzo per svitare l'inserto valvola..... 801461005

*Valve core screwdriver*

Q.tà: nr 1

Q.ty: 1



801261910

Leva premitallone con cordino

*Plastic bead pressing lever whit cord*



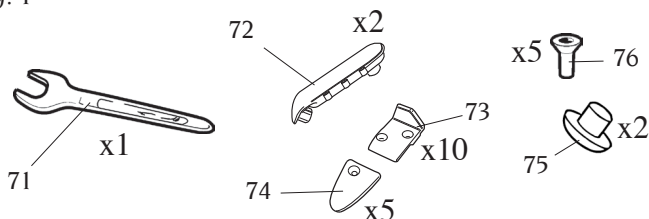
Q.tà: nr 1  
Q.ty: 1



900415248

**Pennello**  
**Brush**

Q.tà: nr 1  
Q.ty: 1

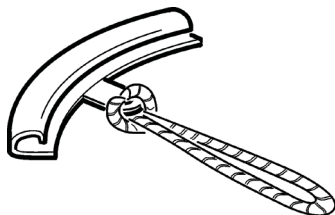


5-101205

**Protezioni + Chiavi**  
**Plastic covers + keys**

71	Chiave esagonale.....	2-00749
	Key	
72	Inserto gancio.....	4-103501
	Hook plastic cover	
73	Inserto torretta.....	4-103502
	Mounting head plastic cover	
74	Inserto coda torretta.....	4-106611
	Mounting head tail plastic cover	
75	Protezione.....	461560
	Plastic cover	
76	Vite .....	2-03438
	Screw	

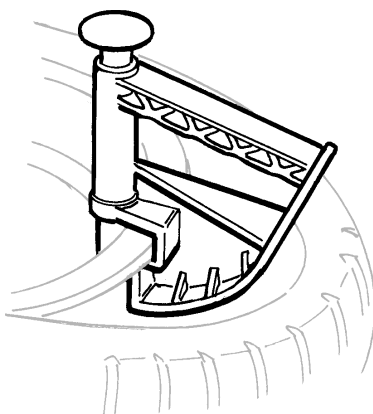
Q.tà: nr 1  
Q.ty: 1



2201716

**Serie di 3 rotezioni bordo cerchio**  
**Rim edge plastic protections (3 pcs.)**

Q.tà: nr 1  
Q.ty: 1

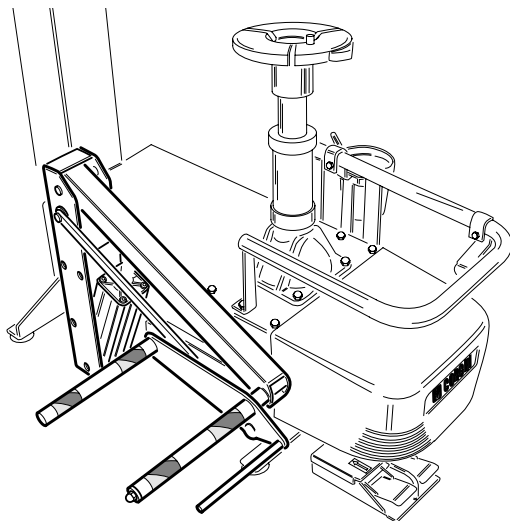


801435685

**Pinza in plastica**  
**Plastic bead pressing clamp**

Q.tà: nr 1

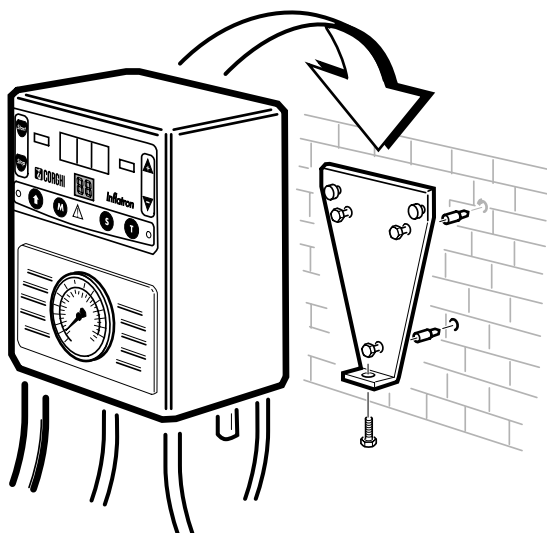
Q.ty: 1



**18 8-11100085**    **Kit sollevatore ruota**  
**Wheel lifter kit**

Q.tà: nr 1 staffa

Q.ty: 1 clamp



**8-11400048**    **INFLATRON con installazione a muro**  
**Wall mounting INFLATRON**



**CORGHI**

CORGHI S.p.A. - Strada Statale 468 n.9  
42015 CORREGGIO - R.E. - ITALY  
Tel. ++39 0522 639.111 - Fax ++39 0522 639.150  
[www.corgi.com](http://www.corgi.com) - [info@corgi.com](mailto:info@corgi.com)