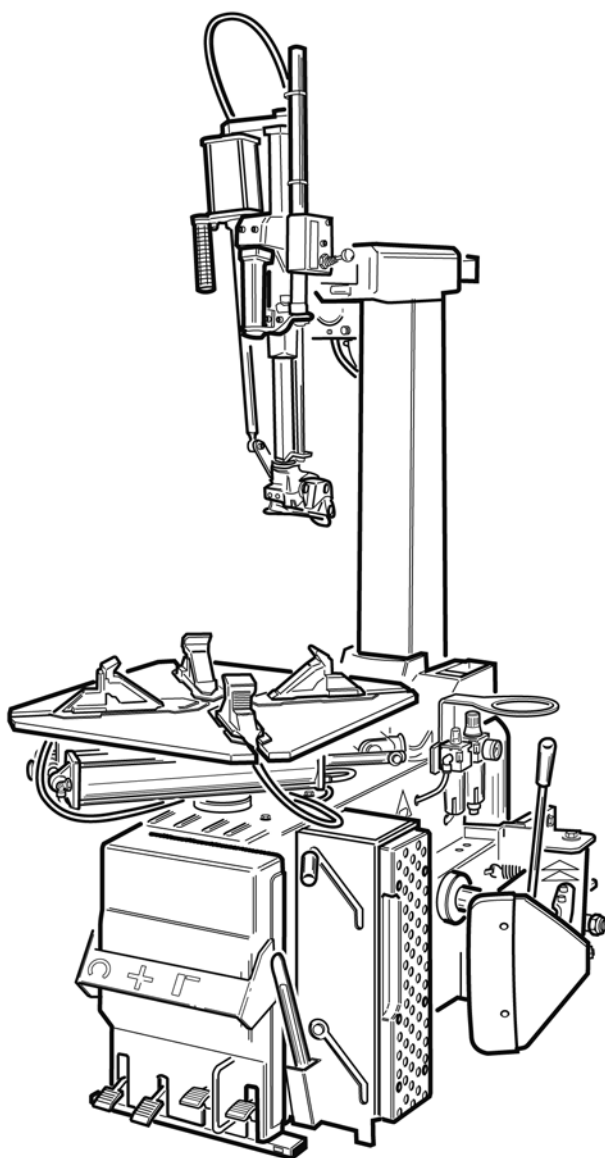


Questo libretto non autorizza l'utente ad intervenire sulle macchine ad esclusione di quanto esplicitamente descritto nel Manuale d'uso, ma consente all'utente di fornire informazioni precise all'Assistenza tecnica, al fine di ridurre i tempi di intervento.

MTS 40-20 LL

The "Spare parts" booklet does not authorize the user to carry out work on the machine unless expressly specified in the instruction manual, but does enable him to provide accurate information to the assistance service in order to reduce downtime.

PEZZI DI RICAMBIO SPARE PARTS LIST ERSATZTEILLISTE PIECES DE RECHANGE



Code

4-111638

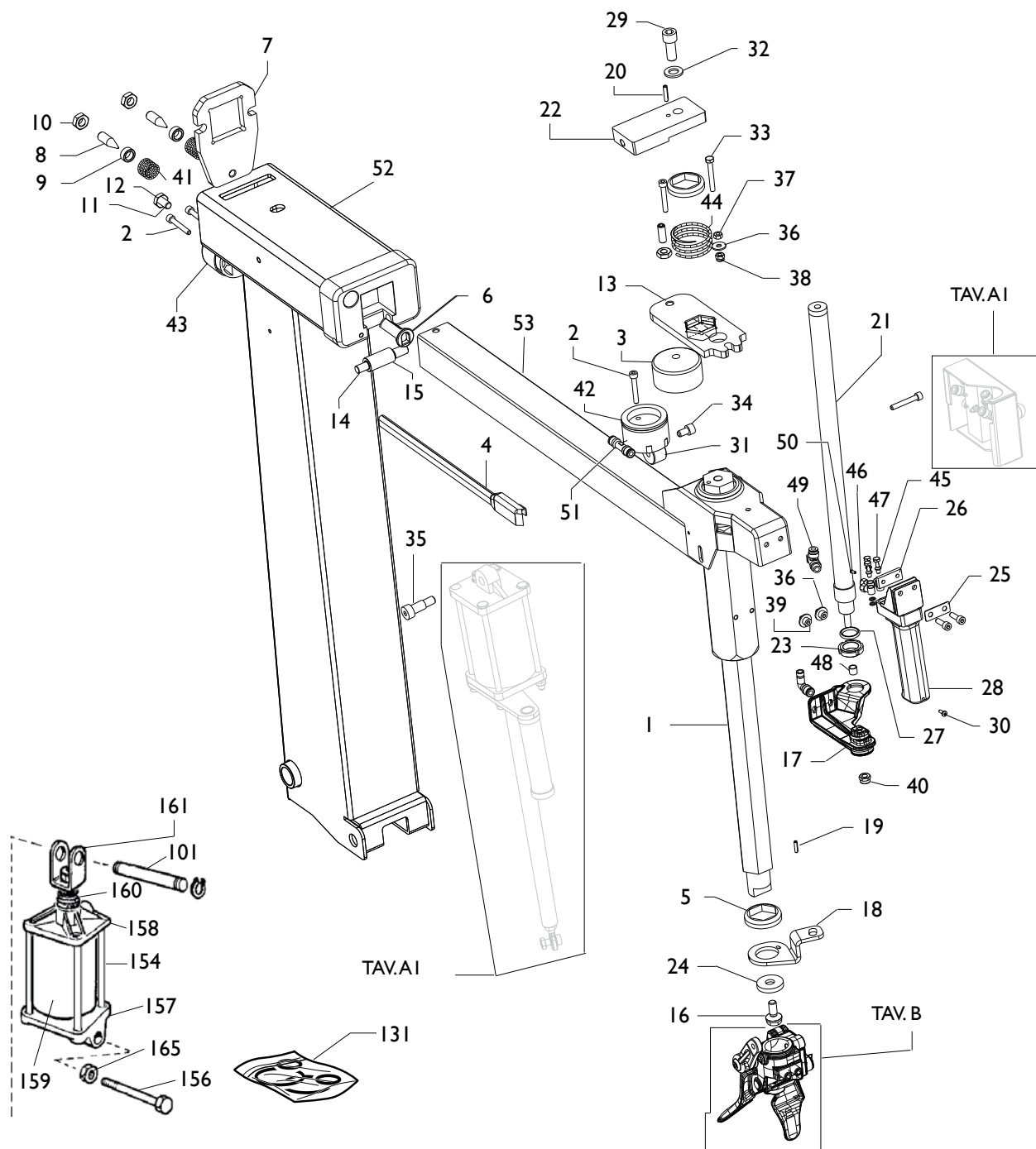
In produzione da
Production from
Herstellung ab
Production

03 / 2011

Der Katalog Ersatzteile stellt keine Genehmigung zu eigenmächtigen Eingriffen dar (mit Ausnahme jener im Handbuch beschrieben), sondern er soll den Anwender in die Lage versetzen, dem technischen Service präzise Informationen zu liefern, um die Reparaturzeiten zu verkürzen.



Le livret "Pièces de rechange", n'autorise pas l'utilisateur à intervenir sur les machines, sauf pour tout ce qui est clairement décrit dans le manuel d'utilisation, mais lui permet de fournir des informations précises à l'assistance technique, afin de diminuer les délais d'intervention.

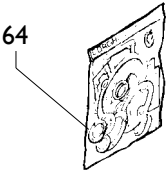
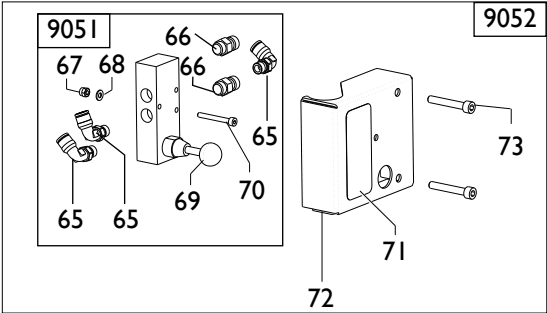
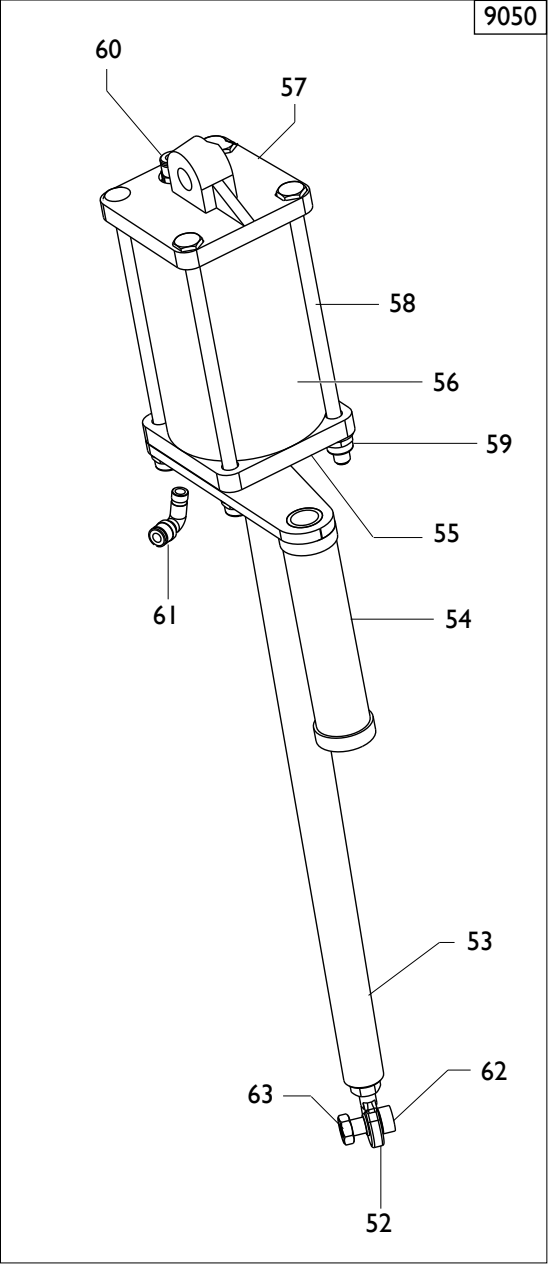


0001	4-106135	BRACCIO VERTICALE
0002	2-00314	VITE
0003	326537	CILINDRO D.60
0004	426763	GUIDA PER TUBI
0005	428681	ANELLO AMMORTIZZATORE
0006	431061	BOCCOLA DI GUIDA
0007	336142	PIASTRA BLOCC.ORIZZ.
0008	341836	VITE
0009	339803	BOCCOLA GUIDA MOLLA
0010	2-00158	DADO
0011	2-01291	VITE
0012	2-00157	DADO

ARM
SCREW
CYLINDER
GUIDE
RING
BUSH
PLATE
SCREW
BUSH
NUT
SCREW
NUT

	MTS40-20 LL	Fig. A	03 / II	Braccio operante
--	--------------------	---------------	----------------	-------------------------

0013	340429	PIASTRA BLOCC.VERTICALE	PLATE
0014	339786	PERNO ECCENTRICO	PIN
0015	339782	RULLO	ROLLER
0016	350197	VITE FISSAGGIO TORRETTA	SCREW
0017	5-101564	SUPPORTO MANIGLIA + VALVOLA	SUPPORT
0018	4-103893	LAMIERA AGGANCIO TORRETTA	PLATE
0019	2-00973	SINA EL.	SPIROL
0020	2-01058	SPINA ELEASTICA	SPIROL
0021	4-103895	CILINDRO D.200/400	CYLINDER
0022	4-106978	ATTACCO CILINDRO UTENSILE	PLATE
0023	440946	GHIERA	NUT
0024	4-107211	RONDELLA TORRETTA	WASHER
0025	327283	PIASTRINA	PLATE
0026	327284	PIASTRINA	PLATE
0027	441728	OR	OR
0028	5-101479	RUB.CON MANIGLIA	HANDLE
0029	2-80101	VITE	SCREW
0030	2-02887	VITE	SCREW
0031	383372	FERMO SCORREVOLE	STOP
0032	2-00214	RONDELLA	WASHER
0033	2-00367	VITE	SCREW
0034	2-01295	VITE	SCREW
0035	4-103906	VITE	SCREW
0036	2-00679	RONDELLA	WASHER
0037	2-00150	DADO	NUT
0038	2-01257	DADO	NUT
0039	2-00308	VITE	VITE
0040	2-01137	DADO	NUT
0041	439787	MOLLA	SPRING
0042	239806	PISTONE	PISTON
0043	239805	PISTONE BLOCC.POST.+RACC.	PISTON
0044	440342	MOLLA	SPRING
0045	3-00452	RONDELLA PLASTICA	WASHER
0046	3-00079	RACCORDO	CONNECTOR
0047	3-00070	RACCORDO	CONNECTOR
0048	4-103897	DISTANZIALE	SPACER
0049	4-104740	STROZZATORE	CONNECTOR
0050	331783	STROZZATORE	CONNECTOR
0051	3-00119	RACCORDO	CONNECTOR
0052	4-100799	PALO	COLUMN
0053	4-106010	BRACCIO	ARM
0101	326667	PERNO SUP.	PIN
0131	241484	KIT GUARNIZIONI	SEALS KIT
0154	4-100825	CILINDRO	CYLINDER
0156	4-101715	PERNO INF.	PIN
0157	338299	FLANGIA POST.	FLANGE
0158	338300	FLANGIA ANT.	FLANGE
0159	4-100828	CAMICIA	LINER
0160	4-100826	STELO	ROD
0161	323350	CAVALLOTTO	SUPPORT
0165	4-101716	DISTANZIALE	SPACER

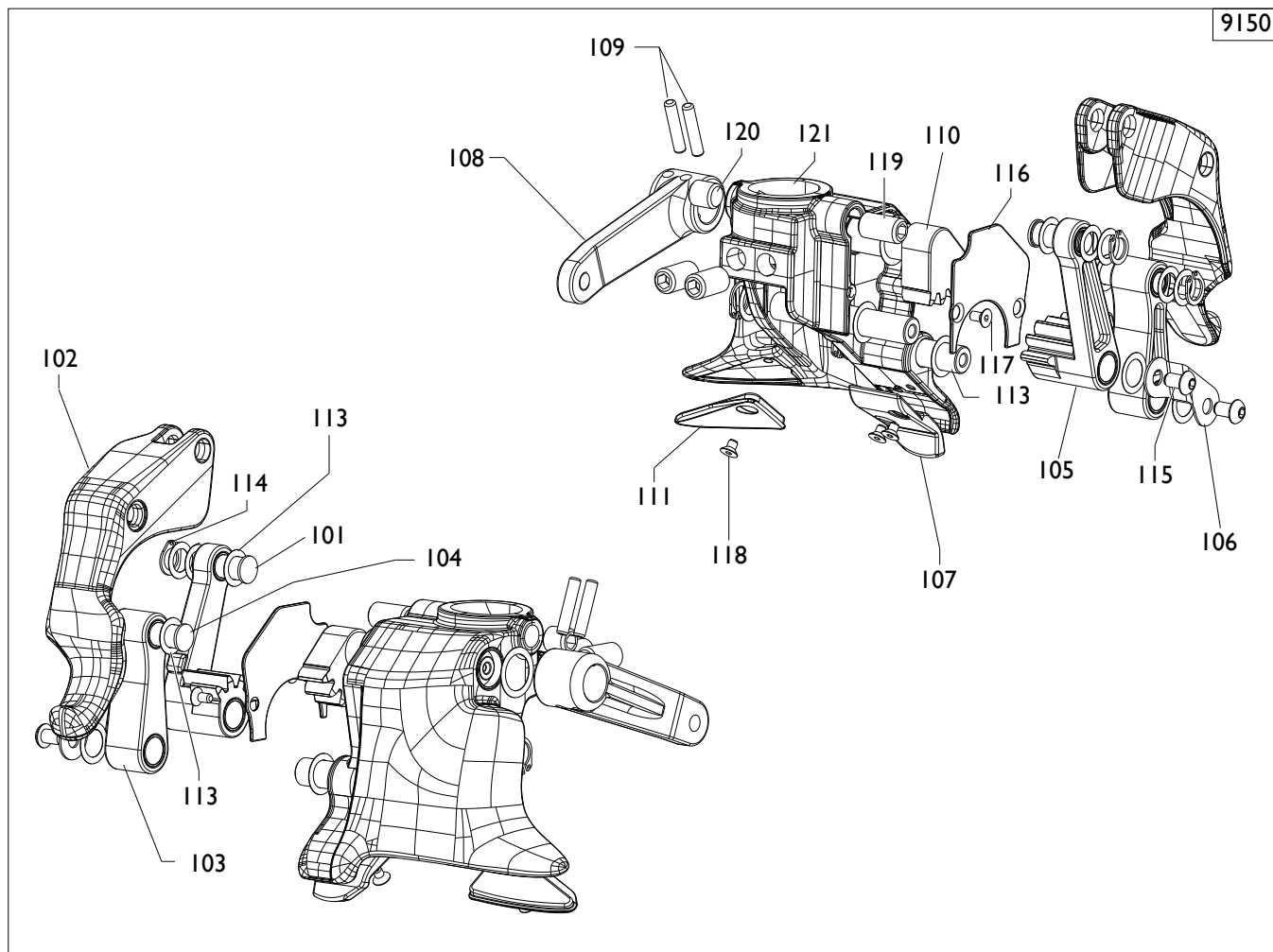


	MTS40-20 LL	Fig. A I	03 / I I	Cilindro comando ut ./Valv.
--	--------------------	-----------------	-----------------	------------------------------------

9050	5-100035	CILINDRO COMANDO UTENSILE	CYLINDER
0052	2-03391	TERMINAALE	TERMINAL
0053	4-101460	STELO	ROD
0054	4-104722	MANIGLIA	HANDLE
0055	361519	FLANGIA ANT.	FLANGE
0056	4-106258	CAMICIA	LINER
0057	361975	FLANGIA POST.	FLANGE
0058	4-106257	TIRANTE	BOLT
0059	2-01137	DADO	NUT
0060	3-00461	RACCORDO	CONNECTOR
0061	3-00053	RACCORDO	CONNECTOR
0062	2-02123	VITE	SCREW
0063	2-91680	DADO	NUT

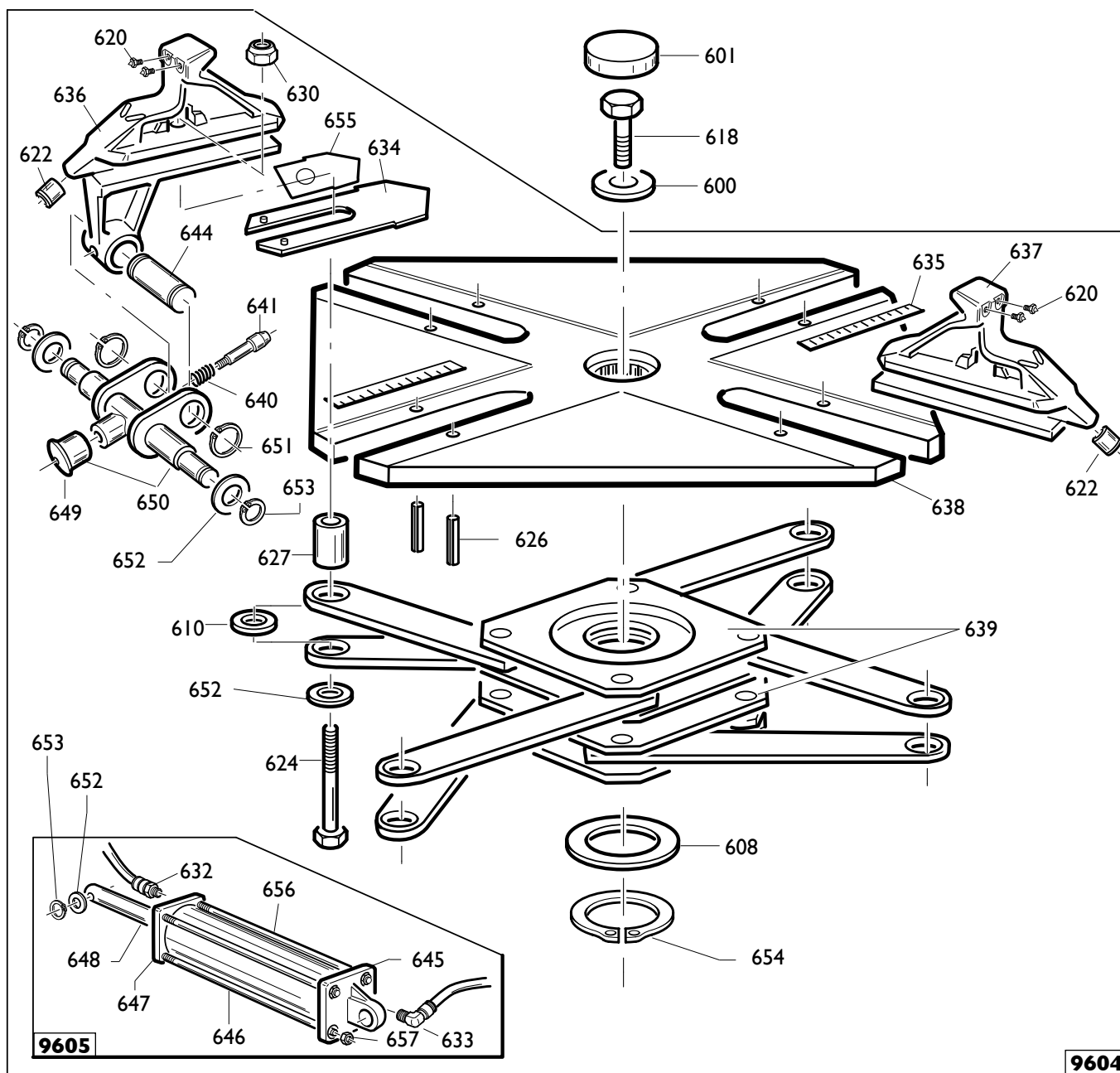
9052	5-101255	GR.VALVOLA S/MONTAGGIO	VALVE GROUP
0071	4-103904	ADESIVO RIBALTAMENTO	LABEL
0072	4-103903/90	CARTER	CASING
0073	2-00314	VITE	SCREW
9051	5-102723	VALVOLA	VALVE
0065	3-00053	RACCORDO	CONNECTOR
0066	433675	REGOLATORE	REGULATOR
0067	2-01018	DADO	NUT
0068	2-00209	RONDELLA	WASHER
0069	3-03029	POMOLO	HANDLE
0070	2-02022	VITE	SCREW

0064	262382	KIT GUARNIZIONI	GASKET KIT
------	--------	-----------------	------------

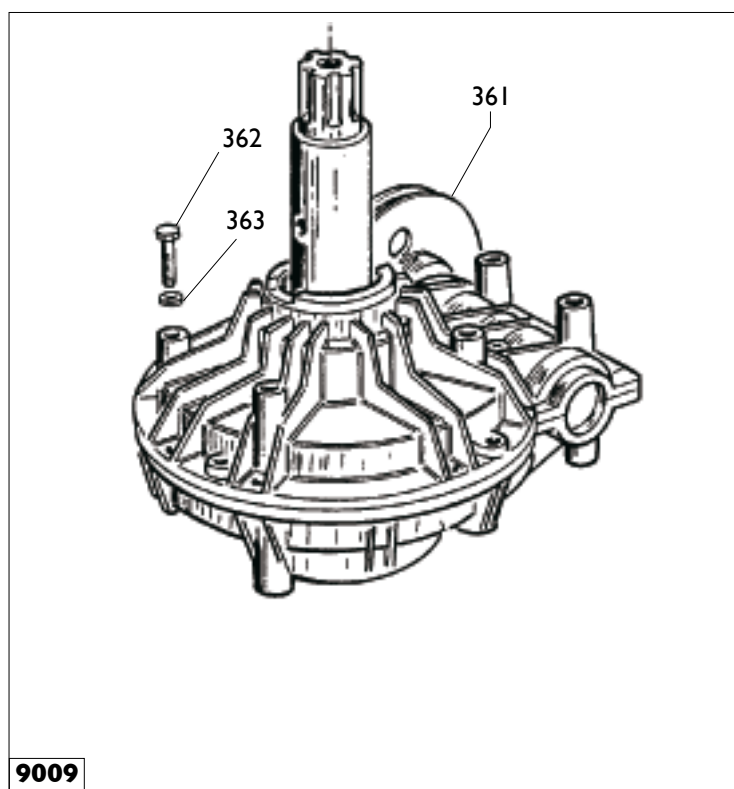
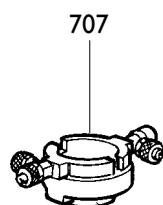


	MTS40-20 LL	Fig. B	03 / 11	Utensile
--	--------------------	---------------	----------------	-----------------

9150	5-102266	TORRETTA	HEAD
0101	4-103933	PERNO	PIN
0102	4-103266	GANCIO	HOOK
0103	5-101265	BIELLA	TRACE
0104	4-103932	PERNO	PIN
0105	5-101266	BIELLA	TRACE
0106	4-104981	LAMIERA	METAL SHEET
0107	4-103502	INSERTO	INSERT
0108	4-103256	LEVA	LEVER
0109	2-71581	SPINA	PLUG
0110	4-103264	INGRANAGGIO	GEAR
0111	4-106611	INSERTO	INSERT
0113	315274	RONDELLA	WASHER
0114	2-00025	SEEGER	SEEGER
0115	2-02569	VITE	SCREW
0116	4-106610	COPERTURA	CASING
0117	2-72205	VITE	SCREW
0118	2-03438	VITE	SCREW
0119	2-02096	GRANO	SCREW
0120	2-01040	GRANO	SCREW
0121	4-106638	TORRETTA+PERNI	TOOL+PINS

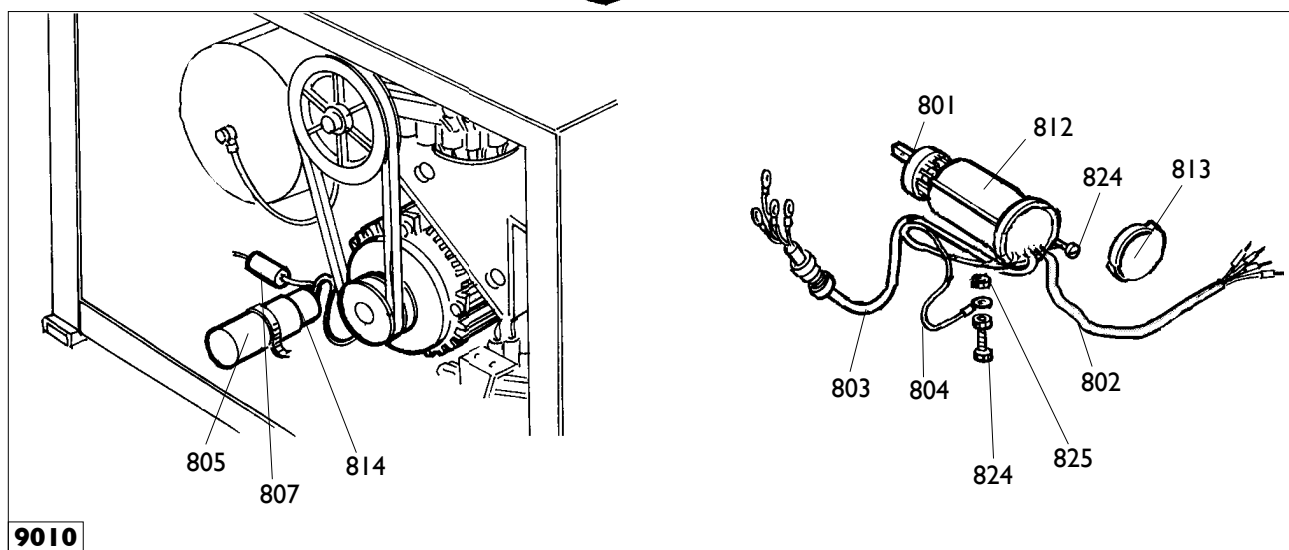
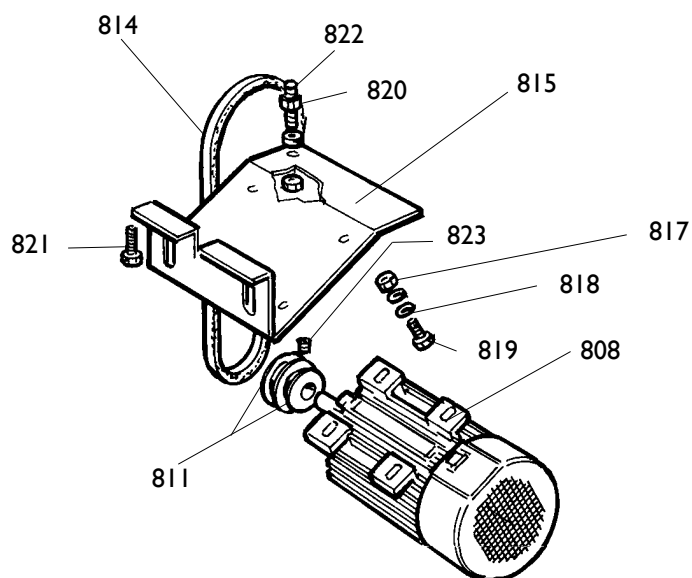


0600	323363	RONDELLA	WASHER	UNTERLEGSCHEIBE	RONDELLE
0601	426514	TAPPO	PLUG	STOPFEN	BOUCHON
0613	238548	KIT GUARNIZIONI	SEALS KIT	DICHTUNGSATZ	KIT JOINTS
0618	2-01216	VITE	SCREW	SCHRAUBE	VIS
9604	5-100507	AUTOCENTRANTE T.I.	TURNTABLE T.I.	SPANNFUTTER T.I.	PLAT.AUTOC. T.I.
0608	455082	RONDELLA	WASHER	UNTERLEGSCHEIBE	RONDELLE
0610	437964	RONDELLA	WASHER	UNTERLEGSCHEIBE	RONDELLE
0620	339146	PUNTE DI BLOCC.	LOCKING PEAK	FESTKLEMMENSPIITZE	POINTE DE BLOCAGE
0622	441100	RACCORDO	CONNECTOR	ANSCHLUSS	RACCORD
0624	2-02199	VITE	SCREW	SCHRAUBE	VIS
0626	2-01059	SPINA	PLUG	STECKER	FICHE
0627	353803	BOCCOLA	BUSHING	LAGER	DOUILLE
0630	2-02200	DADO	NUT	MUTTER	ECROU
0634	4-101441	COPRIASOLA	COVER	LOCHSTOPFEN	BOUCHON
0635	4-101456	TARGHETTA	DATA PLATE	TYPENSHIELD	PLAQUETTE
0636	5-100460	APPOGG. T.I. TRAINANTE	RIM SUPPORT T.I.	STUETZE T.I.	APPUI T.I.
0637	5-100459	APPOGG. T.I. TRAINATO.	RIM SUPPORT T.I.	STUETZE T.I.	APPUI T.I.
0638	4-101438	PIATTO	PLATE	TELLER	PLAT
0639	4-101651	FLANGIA	FLANGE	FLANSCH	FLASQUE
0640	4-101422	MOLLA	SPRING	FEDER	RESSORT
0641	4-101444	INNESTO	PIN	ZAPFEN	PIVOT
0644	4-101442	PERNO	PIN		
0649	4-109834	POMOLO	KNOB	BALLENGRIFF	POMMEAU
0650	5-103522	MANOVELLA+POMOLO	CRANK	KURBEL	MANIVELLE
0651	2-71587	SEEGER D.20	SEEGER		
0652	2.00214	RONDELLA 12	WASHER		
0653	2-00025	SEEGER D.12	SEEGER		
0654	2-01283	SEEGER D.65	SEEGER		
0655	4-101453	SLITTA	SLIDE		
9605	5-100455	CILINDRO DESTRO	CYLINDER RIGHT	ZYLINDER	CYLINDRE
9605	5-100454	CILINDRO SINISTRO	CYLINDER LEFT	ZYLINDER	CYLINDRE
0632	3-02045	RACCORDO	CONNECTOR	ANSCHLUSS	RACCORD
0633	3-02044	RACCORDO	CONNECTOR	ANSCHLUSS	RACCORD
0645	328573	FLANGIA POST.	FLANGE		
0646	353785	CAMICIA	LINER		
0647	328572	FLANGIA ANT.	FLANGE		
0648	4-101430	STELO	ROD		
0656	453791	TIRANTE	BOLT		
0657	2-01137	DADO M8	NUT		



	MTS40-20	Fig. D	03 / II	Riduttore
--	-----------------	---------------	----------------	------------------

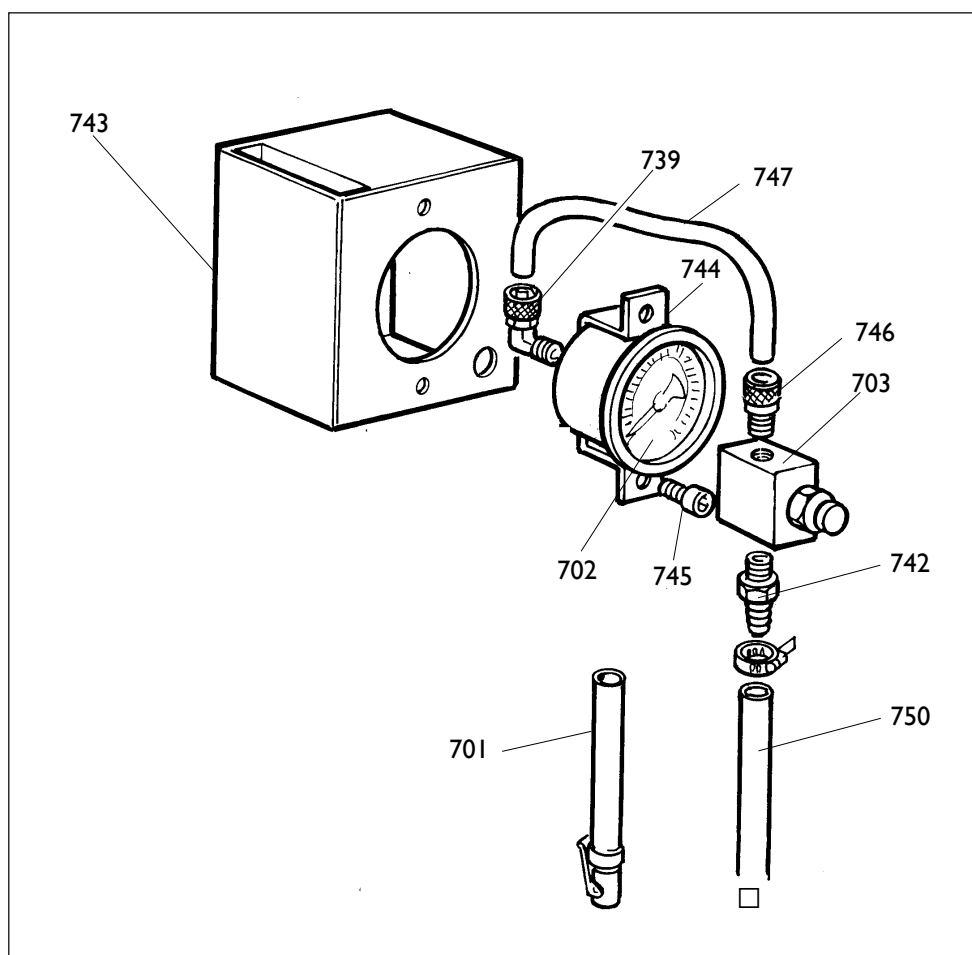
9009	5-102647	RIDUTTORE		GEAR BOX	
9009	239555	RIDUTTORE pneumatico	GEAR BOX air		
9009	5-102648	RIDUTTORE DV		GEAR BOX DV	
0361	319073	PULEGGIA (pnem.)	PULLEY	RIEMENSCHIEBE	POULIE
0361	314344	PULEGGIA	PULLEY	RIEMENSCHIEBE	POULIE
0362	2-01046	VITE M10X55	SCREW		
0363	2-00213	RONDELLA M10	WASHER		
0707	228389	RACCORDO	CONNECTOR	ANSCHLUSS	RACCORD


9010

		IMPIANTO ELETTRICO	ELECTRIC SYSTEM	ELEKTRISCHE ANLAGE	INST. ELECTRIQUE
9010	5-103989	110V 1ph	110V 1ph	110V 1ph	110V 1ph
0801	5-102741	INVERTITORE	REVERSER	RICHTUNGSWENDER	INVERSEUR
0802	447801	CAVO RETE	CABLE	KABEL	CABLE
0803	249590	CAVO MOTORE	CABLE	KABEL	CABLE
0804	249601	CAVALLOTTO	U-BOLT	BUEGELBOLZEN	CRAMPILLON
0805	430750	CAPPELOTTO	CAP NUT	ABSCHLUSSKAPPE	CAPUCHON
0807	430770	RESISTENZA	RESISTANCE	WIDERSTAND	RESISTANCE
0814	4-112706	CONDENSATORE 50mf	CAPACITOR	KONDENSATOR	CONDENSATEUR
9010	249881	230V 1ph	230V 1ph	230V 1ph	230V 1ph
0801	5-102742	INVERTITORE	REVERSER	RICHTUNGSWENDER	INVERSEUR
0802	447801	CAVO RETE	CABLE	KABEL	CABLE
0803	249590	CAVO MOTORE	CABLE	KABEL	CABLE
0804	249601	CAVALLOTTO	U-BOLT	BUEGELBOLZEN	CRAMPILLON
0805	414850	CAPPELOTTO	CAP NUT	ABSCHLUSSKAPPE	CAPUCHON
0807	430770	RESISTENZA	RESISTANCE	WIDERSTAND	RESISTANCE
0814	4-112706	CONDENSATORE 50mf	CAPACITOR	KONDENSATOR	CONDENSATEUR
9010	235574	3ph	3ph	3ph	3ph
0801	5-102742	INVERTITORE	REVERSER	RICHTUNGSWENDER	INVERSEUR
0802	447801	CAVO RETE	CABLE	KABEL	CABLE
0803	249590	CAVO MOTORE	CABLE	KABEL	CABLE
0804	249601	CAVALLOTTO	U-BOLT	BUEGELBOLZEN	CRAMPILLON
		MOTORE	MOTOR	MOTOR	MOTEUR
0808	422013	3ph 230/400V	3ph 230/400V	3ph 230/400V	3ph 230/400V
0808	425397	3ph 240/440V	3ph 240/440V	3ph 240/440V	3ph 240/440V
0808	449747	1ph 230V 50Hz	1ph 230V 50Hz	1ph 230V 50Hz	1ph 230V 50Hz
0808	449748	1ph 230V 60Hz	1ph 230V 60Hz	1ph 230V 60Hz	1ph 230V 60Hz
0808	4-112454	1ph 110V 60Hz	1ph 110V 60Hz	1ph 110V 60Hz	1ph 110V 60Hz
0811	331067	PULEGGIA	PULLEY	RIEMENSCHIEBE	POULIE
0812	432065	PROTEZIONE	SHIELD	ABDECKUNG	PROTECTION
0813	430991	COPERCHIO	LID	DECKEL	COUVERCLE
0815	334768	CULLA	CRADLE	WIEGE	BERCEAU
0816	3-00555	CINGHIA	BELT	RIEMEN	
0817	421349	DADO M8	NUT		
0818	339208	RONDELLA M8	WASHER		
0820	2-00152	DADO M10	NUT		
0821	2-00328	VITE M10X20	SCREW		
0822	455920	VITE SPEC M10X60	SCREW		
0823	2-01091	VITE M6X5	SCREW		
0824	2-00605	VITE M4X10	SCREW		
0825	2-00143	DADO M4	NUT		



9550	233678	PEDALIERA	CONTROL PEDAL		
0501	3-00183	SILENZIATORE	SILENCER	SCHALLDAEMPFER	SILENCIEUX
0503	325019	BALESTRA	LEAF SPRING	BLATTFEDER	RESSORT A LAMES
0504	425020	CAMMA	CAM	NOCKEN	CAME
0505	325018	CAVALLOTTO	U-BOLT	BUEGELBOLZEN	CRAMPILLON
0506	425014	BIELLA	TRACE	PLEUELSTANGE	BIELLE
0508	2-02247	RONDELLA	WASHER	UNTERLEGSCHEIBE	RONDELLE
0509	309358	RONDELLA	WASHER	UNTERLEGSCHEIBE	RONDELLE
0510	325005	PERNO	PIN	ZAPFEN	PIVOT
0511	410628	MOLLA	SPRING	FEDER	RESSORT
0512	325031	PEDALE AUTOCENTR.	PEDAL	PEDAL	PEDALE
0513	325032	PEDALE STALL.	PEDAL	PEDAL	PEDALE
0514	325050	DISTANZIALE	SPACER	ABSTANDSSTUECK	ENTRETOISE
0515	5-102714	PEDALE INVERT.	PEDAL	PEDAL	PEDALE
0516	425010	BIELLA	TRACE	PLEUELSTANGE	BIELLE
0517	425027	LEVA	LEVER	HEBEL	LEVIER
0518	332495	CAVALLOTTO	U-BOLT	BUEGELBOLZEN	CRAMPILLON
0519	5-102739	RUBINETTO DOPPIO	COCK	HAHN	ROBINET
0521	316199	GHIERA	NUT	NUTMUTTER	BAGUE
0523	433675	REGOLATORE	REGULATOR	REGLER	REGULATEUR
0524	524273	SUPPORTO	SUPPORT	LAGER	SUPPORT
0525	325030	PEDALE ALZAPALO	PEDAL	PEDAL	PEDALE
0526	452011	BOCCOLA	BUSHING	LAGER	DOUILLE
0527	317610	TUBO	PIPE	ROHR	TUYAU
0528	383173	TAPPO	PLUG	STOPFEN	BOUCHON
0529	2-00211	RONDELLA D.6	WASHER		
0530	257137	RUBINETTO SINGOLO	COCK	HAHN	ROBINET
0531	4-109664	MOLLA	SPRING	FEDER	RESSORT
0532	2-00025	SEEGER D.12	SEEGER		
0533	2-01979	DADO M6	NUT M6		
0534	2-00366	VITE M6X40	SCREW		
0535	2-01137	DADO M8	NUT		
0536	2-00212	RONDELLA D.8	WASHER		
0537	2-00411	VITE M6X50	SCREW		
0538	2-00312	VITE M6X25	SCREW		
0539	2-00155	DADO M6	NUT		
0540	2-01272	VITE M2,9X9,5	SCREW		



	MTS40-20 LL	Fig. G	03 / 11	Gruppo manometro + gruppo valvola gonfiaggio
--	--------------------	---------------	----------------	---

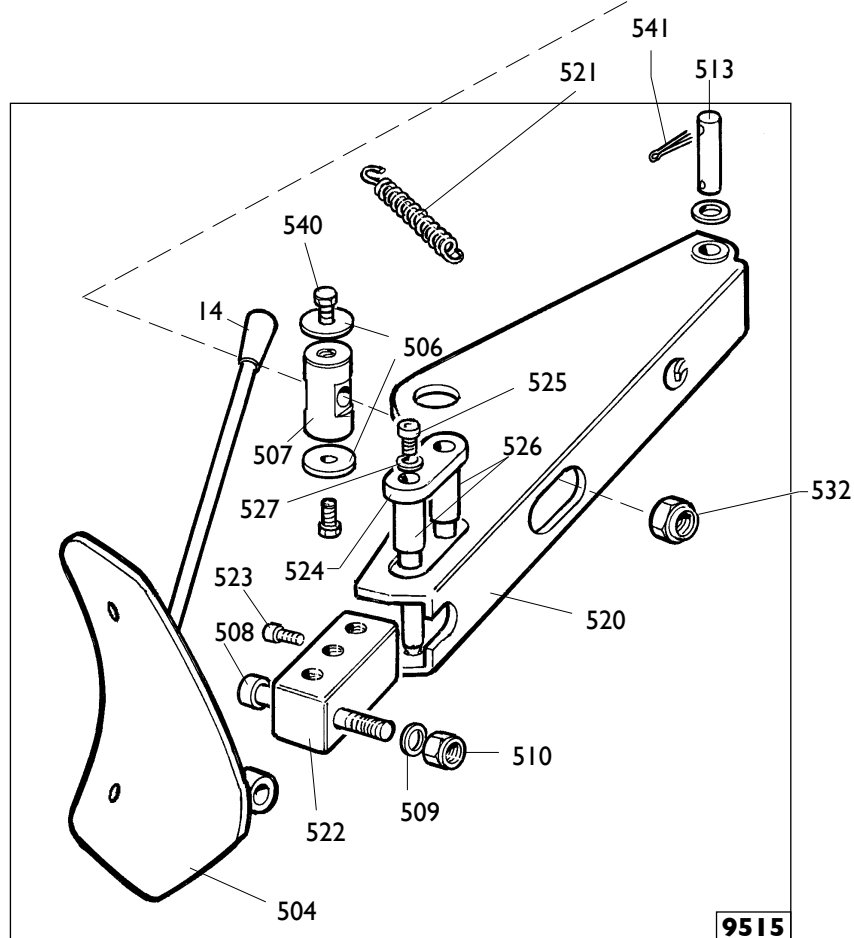
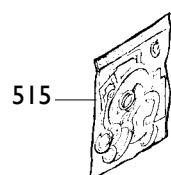
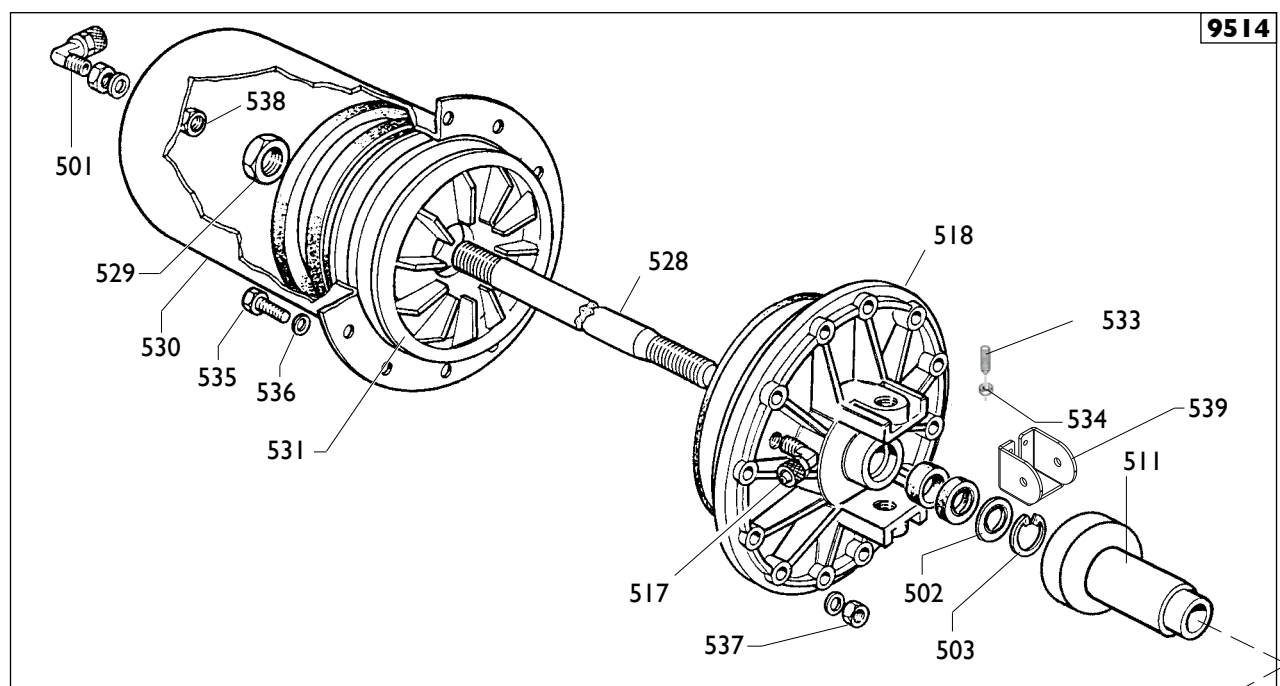
Ø 6	I-01684	TUBO	PIPE	ROHR	TUYAU
Ø 8	I-01683	TUBO	PIPE	ROHR	TUYAU
Ø 10	I-01875	TUBO	PIPE	ROHR	TUYAU

9751	252599	SCATOLA - BAR/PSI	BOX - BAR/PSI	SCHACHTEL - BAR/PSI	BOITE - BAR/PSI
9751	259565	SCATOLA - KPA	BOX - KPA	SCHACHTEL - KPA	BOITE - KPA
0701	262971	TUBO GONFIAGGIO MANOMETRO	PIPE PRESSURE GAUGE	ROHR DRUCKMESSER	TUYAU MANOMETRE
0702	3-00490	MANOMETRO BAR - PSI	BAR - PSI	BAR - PSI	BAR - PSI
0702	3-00493	MANOMETRO KPA	KPA	KPA	KPA
0703	235463	VALVOLA	VALVE	VENTIL	VANNE
0739	3-00103	RACCORDO	CONNECTOR	ANSCHLUSS	RACCORD
0742	3-00007	INNESTO	CLUTCH	KUPPLUNG	EMBRAYAGE
0743	234171	SCATOLA MANOMETRO	BOX		
0744	353537	SUPPORTO MANOMETRO	SUPPORT		
0745	2-71485	VITE M3,9X13	SCREW		
0746	3-00460	RACCORDO	CONNECTOR		
0747	325035	TUBO D.6 L.180 mm	PIPE		
0750	354410	TUBO aria L.3150 mm	PIPE		



	MTS40-20 LL	Fig. H	03 / II	Cassone
--	--------------------	---------------	----------------	----------------

0002	428845	COPERCHIO	LID	DECKEL	COUVERCLE
0005	426768	PROTEZIONE	SHIELD	ABDECKUNG	PROTECTION
0006	436199	APPOGGIO	RIM SUPPORT	STUETZE	APPUI
0007	422019	PIEDE	FOOT	FUSS	PIED
0008	318183	RONDELLA	WASHER	UNTERLEGSCHIEBE	RONDELLE
0009	322348	VITE M10x20	SCREW	SCHRAUBE	VIS
0010	320191	VITE M8x30	SCREW	SCHRAUBE	VIS
0011	331055	PERNO PALO	PIN	ZAPFEN	PIVOT
0012	339456	PERNO MANIGLIA	PIN	ZAPFEN	PIVOT
0013	339046	PERNO BIELLA	PIN	ZAPFEN	PIVOT
0014	425219	MANOPOLA	KNOB	BALLENGRIFF	BOUTON
0016	5-101007	COFANO+ADESIVI	HOOD+LABEL		
0017	4-109098	PROTEZIONE	SHIELD	ABDECKUNG	PROTECTION
0018	239050	BIELLA	ROD		
0019	238911	PROLUNGA APPOGGIO	SUPPORT		
0020	4-102232	ADESIVO	LABEL		
0021	2-01225	VITE	SCREW		
0022	2-01885	VITE M6X25	SCREW		
0023	2-00047	COPIGLIA D.3X30	SCREW		
0024	2-01045	RONDELLA D.16	WASHER		
0025	2-00310	VITE M6X20	SCREW		
0026	2-00211	RONDELLA D.6	WASHER		
0027	2-00113	DADO M10	NUT		
0028	2-00112	DADO M8	NUT		
0029	418135	ADESIVO ROTAZIONE	LABEL		
0030	460384	ADESIVO CORGHI	LABEL		
0031	4-100566	ADESIVO MTS	LABEL		

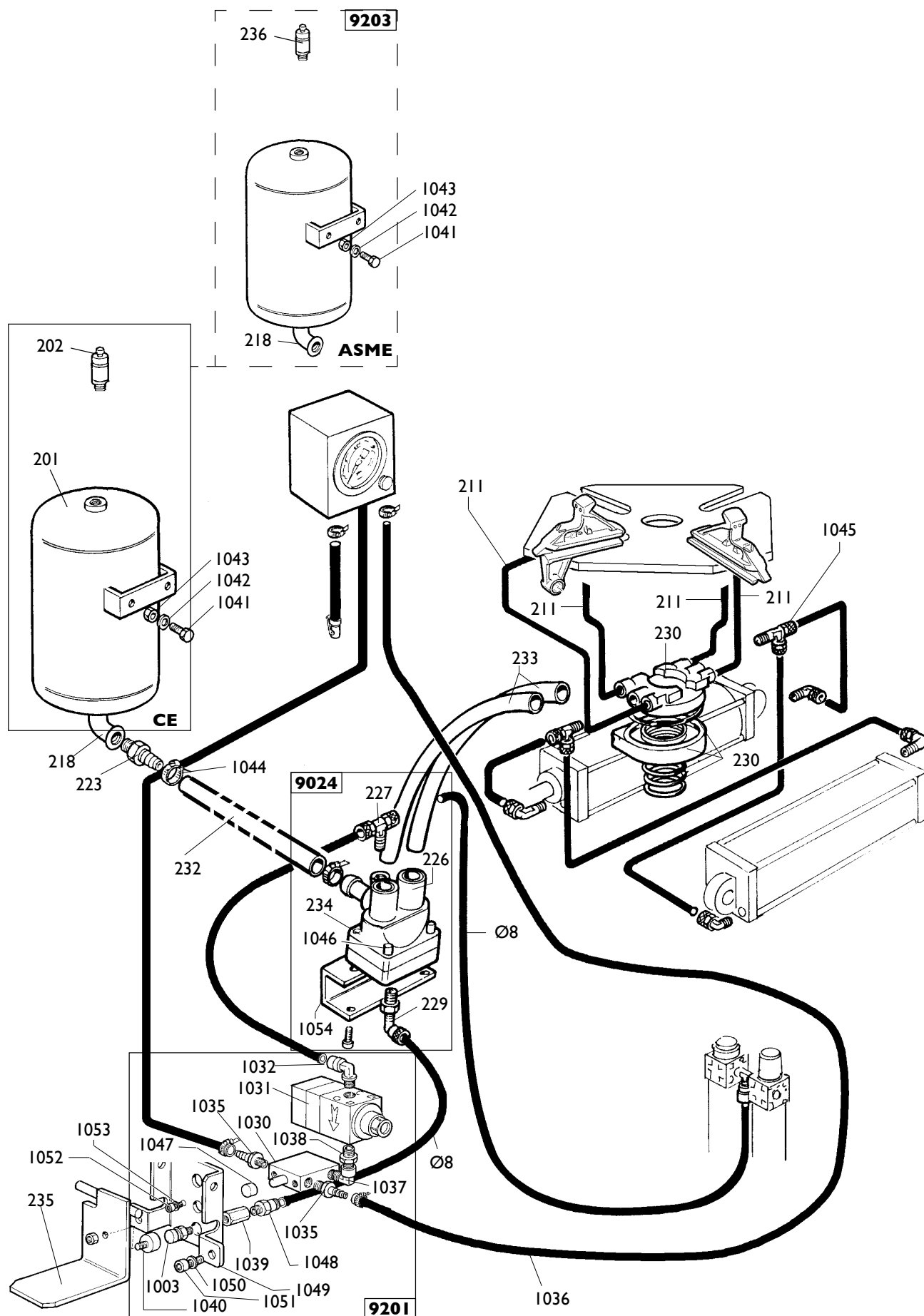


	MTS40-20 LL	Fig. I	03 / II	Stallonatore
--	--------------------	---------------	----------------	---------------------

9514	5-100484	CILINDRO	CYLINDER	ZYLINDER	CYLINDRE
0501	3-00517	RACCORDO	CONNECTOR	ANSCHLUSS	RACCORD
0502	325561	RONDELLA	WASHER	UNTERLEGSCHIEBE	RONDELLE
0503	434031	ANELLO	RING	RING	ANNEAU
0517	3-00222	RACCORDO	CONNECTOR	ANSCHLUSS	RACCORD
0518	351905	FLANGIA	FLANGE	FLANSCH	FLASQUE
0535	2-00310	VITE M6x20	SCREW		
0536	2-00211	RONDELLA D.6	WASHER		
0537	436779	DADO M6	NUT		
0538	333524	DADO 1/4	NUT		

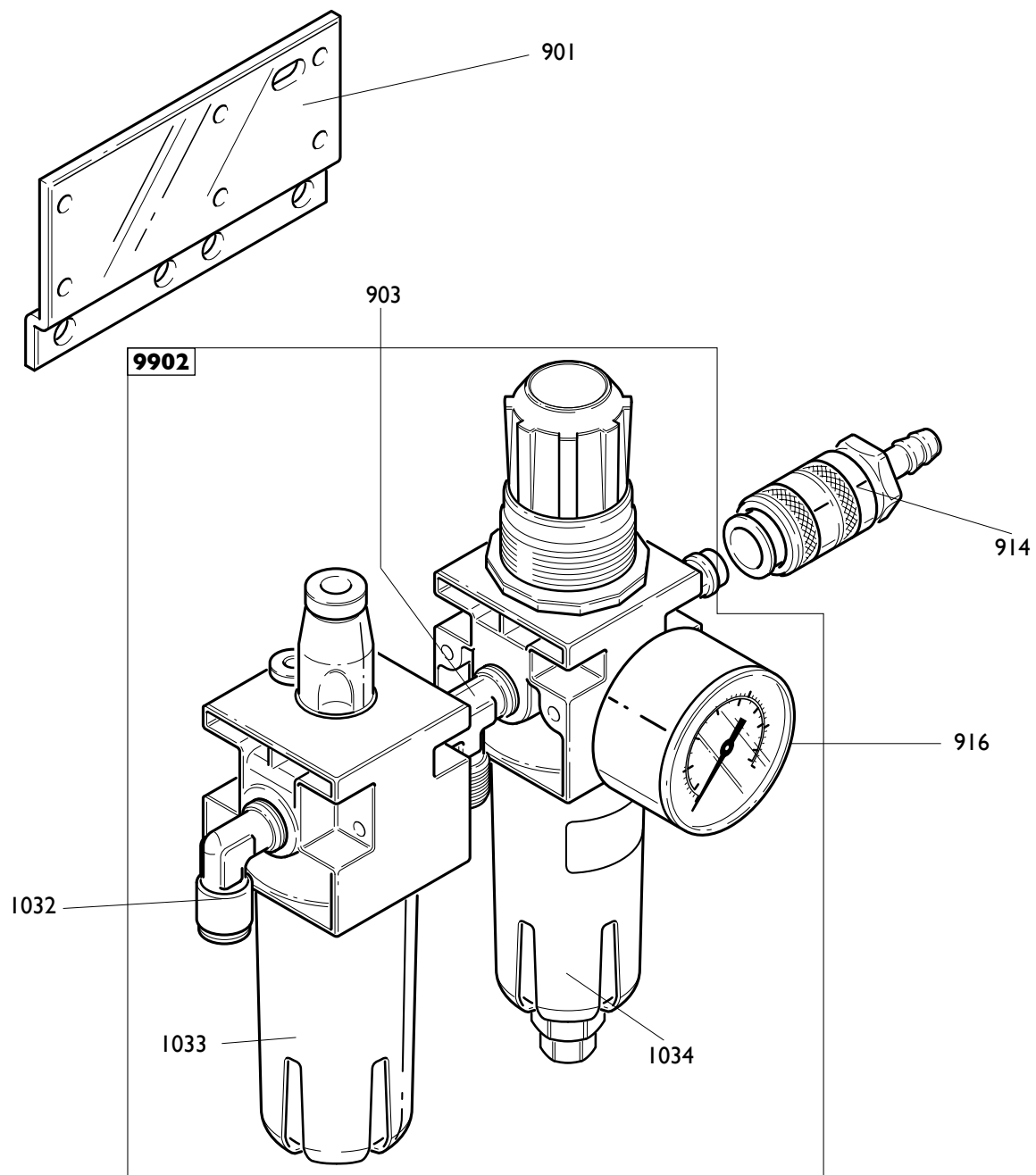
9515	245743	BRACCIO	ARM	ARM	BRAS
0014	425219	MANIGLIA	HANDLE	HANDGRIFF	POIGNEE
0504	224000	PALETTA	BEAD BREAKER	SCHAUFEL	PELLE
0506	323901	RONDELLA	WASHER	UNTERLEGSCHIEBE	RONDELLE
0507	339045	PERNO	PIN	ZAPFEN	PIVOT
0508	324008	VITE M12x90	SCREW		
0509	2-02249	RONDELLA	WASHER	UNTERLEGSCHIEBE	RONDELLE
0510	422255	DADO	NUT	MUTTER	ECROU
0520	245701	BRACCIO	ARM	ARM	BRAS
0522	345618	BLOCCHETTO	BLOCK	BLOCK	BLOC
0523	2-00308	VITE	SCREW	SCHRAUBE	VIS
0524	345616	FERMO	RETAINER	ANSCHLAG	ARRET
0525	2-00372	VITE	SCREW	SCHRAUBE	VIS
0526	345617	PUNTE	LOCKING	FESTKLEMMENSCHITZE	POINTE
0527	2-01299	RONDELLA	WASHER	UNTERLEGSCHIEBE	RONDELLE

0511	239061	TAMPONE	PAD	PUFFER	TAMPON
0513	323903	FULCRO	FULCRUM	DREHPUNKT	ENTABLURE
0515	238212	KIT GUARNIZIONI	SEALS KIT	DICHTUNGSATZ	KIT JOINTS
0521	4-101930	MOLLA	SPRING	FEDER	RESSORT
0528	4-101628	STELO	SHAFT	STEM	TIGE
0529	2-00989	DAMO M18	NUT		
0530	330190	CILINDRO	CYLINDER		
0531	337848	PISTONE	PISTON		
0532	2-01242	DADO M18	NUT		
0533	431864	VITE	SCREW		
0534	2-00992	DADO M14	NUT		
0539	4-101742	SUPPORTO BRACCIO	ARM SUPPORT		
0540	3-00372	VITE	SCREW		
0541	435055	COPPIGLIA	SPRING		



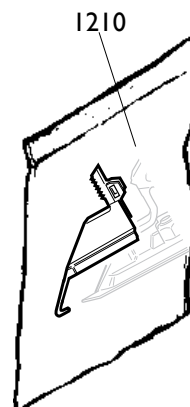
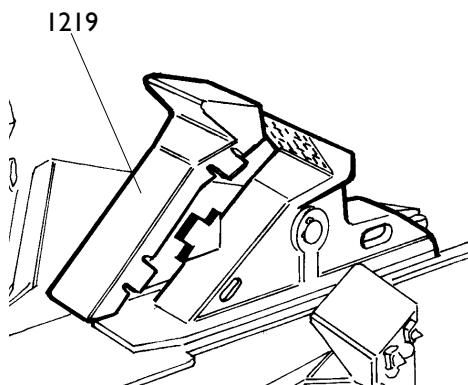
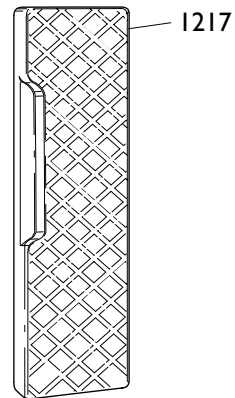
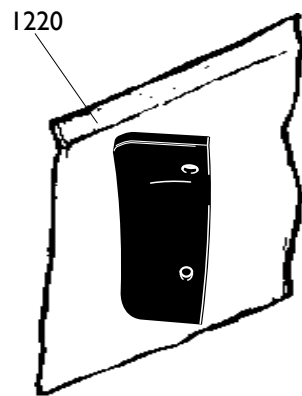
	MTS40-20 LL	Fig. L	03 / II	Versione T.I.
--	--------------------	---------------	----------------	----------------------

Ø 6	I-01684	TUBO	PIPE	ROHR	TUYAU
Ø 8	I-01683	TUBO	PIPE	ROHR	TUYAU
9203	5-100580	SERBATOIO ASME	TANK ASME	TANK ASME	RESERVOIR ASME
0236	3-00278	VALVOLA	VALVE	VENTIL	VANNE
0201	240968	SERBATOIO CE	TANK	TANK	RESERVOIR
0202	3-00356	VALVOLA	VALVE	VENTIL	VANNE
0211	I-04223	TUBO	PIPE	ROHR	TUYAU
0218	438995	RACCORDO	CONNECTOR	ANSCHLUSS	RACCORD
0223	337704	RACCORDO	CONNECTOR	ANSCHLUSS	RACCORD
0235	252625	PEDALE	PEDAL	PEDAL	PEDALE
9024	242290	VALVOLA	VALVE	VENTIL	VANNE
0226	3-00403	CARTUCCIA	CARTRIDGE	EINSATZ	CARTOUCHE
0227	3-00287	RACCORDO	CONNECTOR	ANSCHLUSS	RACCORD
0229	3-00051	RACCORDO	CONNECTOR	ANSCHLUSS	RACCORD
0234	243020	VALVOLA	VALVE	VENTIL	VANNE
I046	2-94066	VITE M6X40	SCREW		
I054	342286	STAFFA	BRACKET		
0230	241841	RACCORDO	CONNECTOR	ANSCHLUSS	RACCORD
0232	4-102573	TUBO	PIPE	ROHR	TUYAU
0233	342289	TUBO	PIPE	ROHR	TUYAU
I041	2-00373	VITE M8X20	SCRW		
I042	2-00212	RONDELA D.8	WASHER		
I043	2-00112	DADO M8	NUT		
I044	403751	FASCETTA	FASTEN		
I045	3-00117	RACCORDO	CONNECTOR		
9201	252568	GRUPPO gonfiaggio	ASSEMBLY	GRUPPE	GROUPE
I003	235463	VALVOLA	VALVE	VENTIL	VANNE
I030	3-00365	VALVOLA	VALVE	VENTIL	VANNE
I031	3-00432	VALVOLA	VALVE	VENTIL	VANNE
I032	3-00221	RACCORDO	CONNECTOR	ANSCHLUSS	RACCORD
I035	3-00004	INNESTO	CLUTCH	KUPPLUNG	EMBRAYAGE
I036	352614	TUBO aria L.1900mm	PIPE	ROHR	TUYAU
I037	3-00138	RACCORDO	CONNECTION		
I038	3-00135	NIPPLO	CONNECTION	NIPPEL	NIPPLE
I039	338576	DISTANZIALE	SPACE		
I040	452624	ANTIVIBRANTE	ANTISHOCK		
I047	352619	CAPPELOTTO	BOLT		
I048	3-00460	RACCORDO	CONNECTOR		
I049	352698	SUPPORTO	SUPPORT		
I050	2-00212	RONDELLA D.8	WASHER		
I051	2-00320	VITE M8	SCREW		
I052	2-00295	VITE M4X8	SCRE		
I053	2-00209	RONDELLA D.4	WASHER		



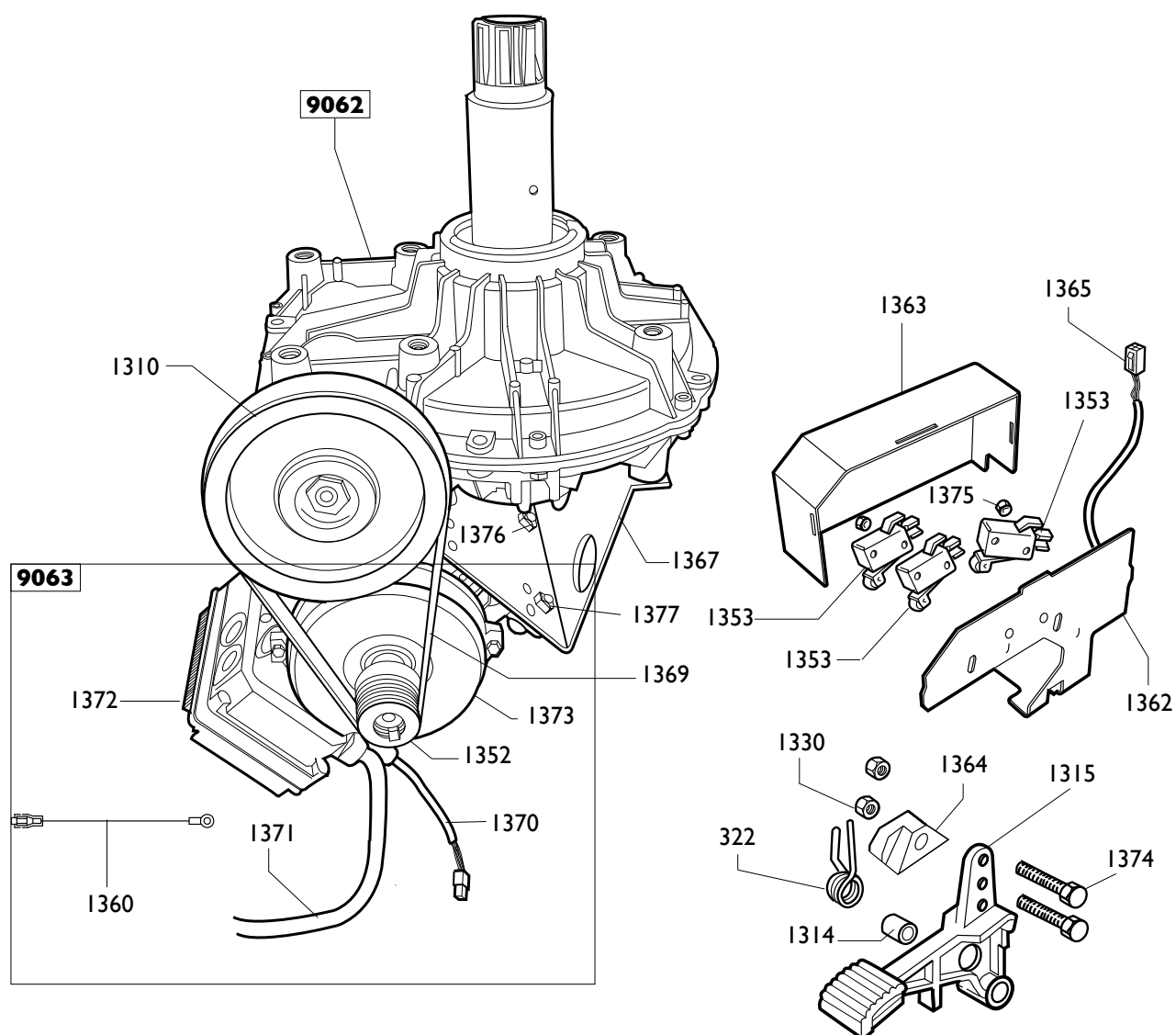
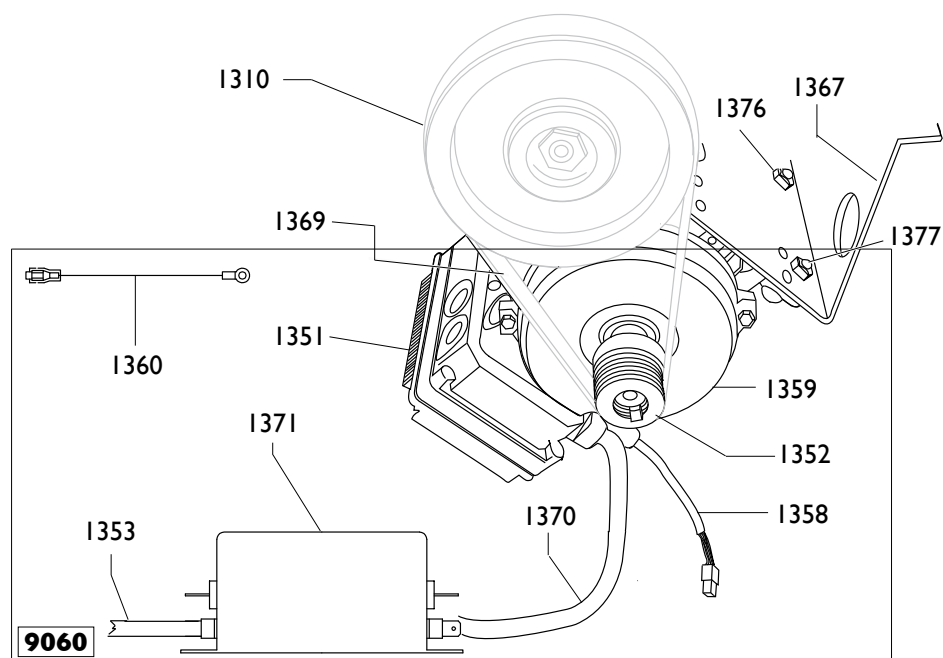
	MTS40-20 LL	Fig. M	03 / 11	Gruppo filtro
--	--------------------	---------------	----------------	----------------------

0901	335695	STAFFA	BRACKET	KLAUE	ETRIER
0903	3-00001	RACCORDO	CONNECTOR	ANSCHLUSS	RACCORD
9902	456522	FILTRO	FILTER	FILTER	FILTRE
1033	457511	BICCHIERE LUBRUF.	BOWL	GLAS	BOL
1034	457512	BICCHIERE FILTRO	BOWL	GLAS	BOL
0914	3-00257	GIUNTO	CUOPLING	KUPPLUNG	ACCOUPLEMENT
0916	3-00488	MANOMETRO	PRESSURE GAUGE	DRUCKMESSER	MANOMETRE
1032	3-00221	RACCORDO	CONNECTOR	ANSCHLUSS	RACCORD



	MTS40-20 LL	Fig. N	03 / 11	Accessori
--	--------------------	---------------	----------------	------------------

1210	8-11100109	KIT 12 PROTEZIONI EST.	SHIELD	ABDECKUNG	PROTECTION
1217	801458663	PROTEZIONE	SHIELD	ABDECKUNG	PROTECTION
1219	8-11100108	KIT 12 PROTEZ.CUNEO	SHIELD	ABDECKUNG	PROTECTION
1220	8-11100105	KIT 6 PROTEZ.PALETТА	SHIELD	ABDECKUNG	PROTECTION



<i>MOTORE+INV 2 CONDENSATORI</i>				<i>MOTOR+REV.</i>	
9060	5-101153	200-230V 1ph	200-230V 1ph	200-230V 1ph	200-230V 1ph
1351	4-108154	SCHEDA ELETTR. 230V	P.C.BOARD	ELEKTR.PLATINE	FICHE ELECTR.
1352	4-102397	PULEGGIA	PULLEY	RIEMENSCHIEBE	POULIE
1353	4-109893	CAVO RETE	CABLE		
1358	4-109895	CAVO COMANDI 230V	CABLE		
1359	4-109821	MOTORE(SENZA SCHEDA)200-230/1/50-60HZ		MOTOR	
1360	4-103316	CAVO TERRA	CABLE		
1370	4-109894	CAVO ALIM.MOTORE	CABLE		
1371	4-109914	FILTRO RETE	FILTER		

		<i>MOTORE+INV</i>	<i>MOTOR+REV.</i>	<i>MOTOR+RICHTUNGSW.</i>	<i>MOTEUR+INV.</i>
9063	5-103622	115V 1ph	115V 1ph	115V 1ph	115V 1ph
1371	4-111586	CAVO RETE	CABLE	KABEL	CABLE
1372	4-111584	SCHEDA ELETTR. 115V	P.C.BOARD		
1352	4-102397	PULEGGIA	PULLEY	RIEMENSCHIEBE	POULIE
1360	4-101659	CAVO TERRA	CABLE		
1370	4-109895	CAVO COMANDI 115V	CABLE		
1373	4-109821	MOTOINVERTER 115V(senza scheda)		MOTOINVERTER 115V	

9062	5-102648	<i>RIDUTTORE</i>	<i>GEAR BOX</i>	<i>GETRIEBE</i>	<i>REDUCTEUR</i>
1310	339870	PULEGGIA	PULLEY	RIEMENSCHIEBE	POULIE
1315	5-102714	PEDALE	PEDAL	PEDAL	PEDALE
1314	325050	DISTANZIALE	SPACER	ABSTANDSSTUECK	ENTRETOISE
0322	4-109664	MOLLA	SPRING	FEDER	RESSORT
1353	440874	MICROINTERUTORE	MICROSWITCH	MIKROSCHALTER	MICROINTERRUPT.
1330	346008	BOCCOLA	BUSHING	LAGER	DOUILLE
1362	4-102401	SUPPORTO MICRO	SUPPORT		
1363	4-102402	COPERCHIO	CASING		
1364	461535	SUPPORTO MICRO	SUPPORT		
1365	4-101693	CAVO COMANDI PEDALIERA		CABLE	
1367	4-109965	CULLA MOTORE 230/115V	SUPPORT		
1369	3-00573	CINGHIA	BELT		
1374	2-00441	VITE M6X50	SCREW		
1375	2-00124	DADO M4	NUT		
1376	421349	DADO M8	NUT		
1377	2-00375	VITE M8X30	SCREW		

A large rectangular area containing 20 horizontal dotted lines, intended for writing or drawing.

.....

.....

.....

.....

.....

.....

.....

.....

.....

.....

.....

.....

.....

.....

.....

.....

.....

.....

.....

.....

.....

Il disegno è realizzato con tutti i particolari ma solo quelli codificati sono forniti come ricambi. L'Azienda si riserva la facoltà di apportare modifiche senza preavviso.



Strada Statale 468, n°9 - 42015 Correggio (RE) ITALY
Tel. ++39 0522 639111 - Fax ++39 0522 639150
www.corgi.com - info@corgi.com

The drawing shows all parts but only the coded parts are supplied as spares. The Company reserves the right to make modifications without prior notice.

COMIM - Cod. 4-111638 - 0311.