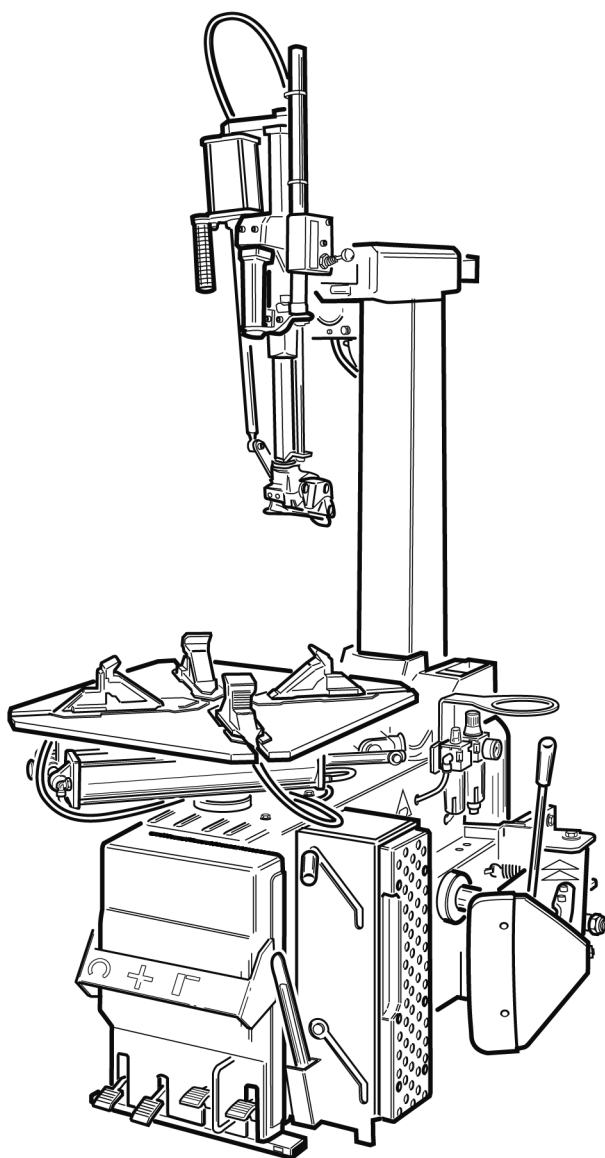


Questo libretto non autorizza l'utente ad intervenire sulle macchine ad esclusione di quanto esplicitamente descritto nel Manuale d'uso, ma consente all'utente di fornire informazioni precise all'Assistenza tecnica, al fine di ridurre i tempi di intervento.

MTS 40-20 LL

The "Spare parts" booklet does not authorize the user to carry out work on the machine unless expressly specified in the instruction manual, but does enable him to provide accurate information to the assistance service in order to reduce downtime.

PEZZI DI RICAMBIO SPARE PARTS LIST ERSATZTEILLISTE PIECES DE RECHANGE



Code

4-111638C

In produzione da
Production from
Herstellung ab
Production

11 / 2013

Der Katalog Ersatzteile stellt keine Genehmigung zu eigenmächtigen Eingriffen dar (mit Ausnahme jener im Handbuch beschrieben), sondern er soll den Anwender in die Lage versetzen, dem technischen Service präzise Informationen zu liefern, um die Reparaturzeiten zu verkürzen.



Le livret "Pièces de rechange", n'autorise pas l'utilisateur à intervenir sur les machines, sauf pour tout ce qui est clairement décrit dans le manuel d'utilisation, mais lui permet de fournir des informations précises à l'assistance technique, afin de diminuer les délais d'intervention.

I

Sul presente documento sono stati indicati in grassetto i codici che sono variati rispetto a quelli riportati nella precedente versione del 04/13

En

Codes that have changed from those given in the previous version dated 04/13 are indicated in bold type in this document

De

Die gegenüber der Vorgängerversion vom 04/13 geänderten Codes sind im vorliegenden Dokument fettgedruckt angegeben

Fr

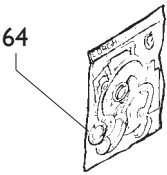
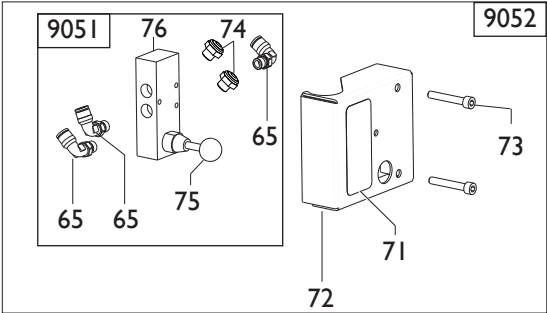
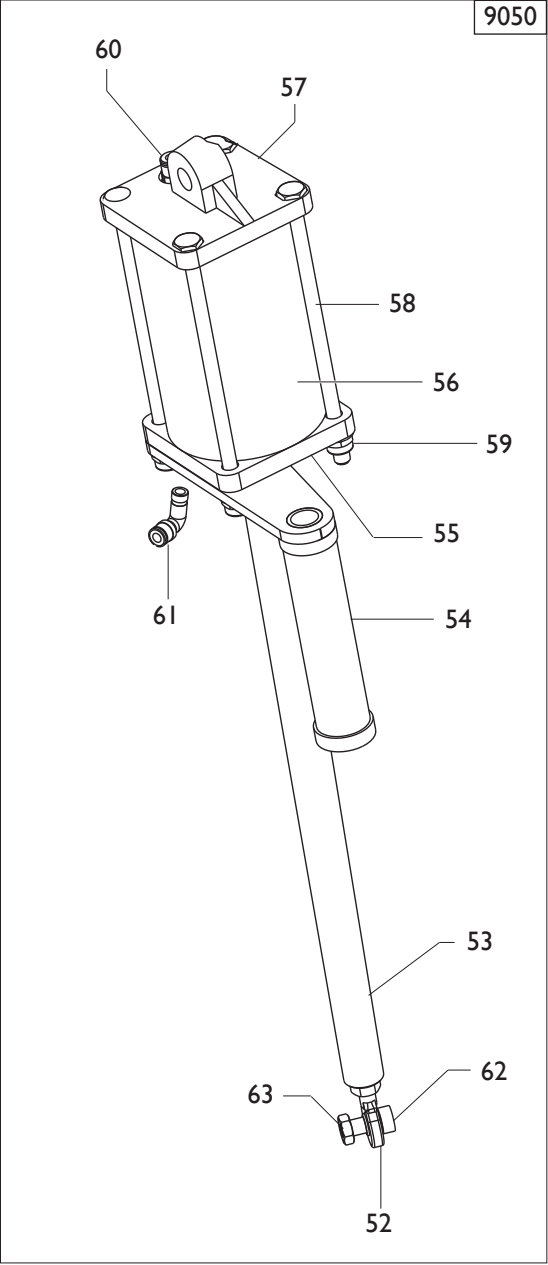
Ce document reporte en gras les codes qui ont été modifiés par rapport à ceux reportés dans la version précédente du mois de 04/13



4

	MTS40-20 LL	Fig. A	09 / 12	Braccio operante
--	--------------------	---------------	----------------	-------------------------

0014	339786	PERNO ECCENTRICO	PIN
0015	339782	RULLO	ROLLER
0016	350197	VITE FISSAGGIO TORRETTA	SCREW
0017	5-101564	SUPPORTO MANIGLIA + VALVOLA	SUPPORT
0018	4-103893	LAMIERA AGGANCIO TORRETTA	PLATE
0019	2-00973	SINA EL.	SPIROL
0020	2-01058	SPINA ELEASTICA	SPIROL
0021	4-103895	CILINDRO D.200/400	CYLINDER
0023	440946	GHIERA	NUT
0024	4-107211	RONDELLA TORRETTA	WASHER
0025	327283	PIASTRINA	PLATE
0026	327284	PIASTRINA	PLATE
0027	441728	OR	OR
0028	5-101479	RUB.CON MANIGLIA	HANDLE
0029	2-80101	VITE	SCREW
0030	2-02887	VITE	SCREW
0031	383372	FERMO SCORREVOLE	STOP
0032	2-00214	RONDELLA	WASHER
0033	2-00367	VITE	SCREW
0034	2-01295	VITE	SCREW
0035	4-103906	VITE	SCREW
0036	2-00679	RONDELLA	WASHER
0037	2-00150	DADO	NUT
0038	2-01257	DADO	NUT
0039	2-00308	VITE	VITE
0040	2-01137	DADO	NUT
0041	439787	MOLLA	SPRING
0042	239806	PISTONE	PISTON
0043	239805	PISTONE BLOCC.POST.+RACC.	PISTON
0044	440342	MOLLA	SPRING
0045	3-00452	RONDELLA PLASTICA	WASHER
0046	3-00079	RACCORDO	CONNECTOR
0047	3-00070	RACCORDO	CONNECTOR
0048	4-103897	DISTANZIALE	SPACER
0049	4-104740	STROZZATORE	CONNECTOR
0050	331783	STROZZATORE	CONNECTOR
0051	3-00119	RACCORDO	CONNECTOR
0052	4-100799	PALO	COLUMN
0053	4-106010	BRACCIO	ARM
0101	326667	PERNO SUP.	PIN
0131	241484	KIT GUARNIZIONI	SEALS KIT
0154	4-100825	CILINDRO	CYLINDER
0156	4-101715	PERNO INF.	PIN
0159	4-100828	CAMICIA	LINER
0165	4-101716	DISTANZIALE	SPACER
0166	4-115295	ATTACCO CILINDRO UTENSILE	PLATE
0167	4-115296	BRACCIO VERTICALE	ARM
0168	4-115956	FLANGIA POSTERIORE	FLANGE
0169	5-105114	FLANGIA ANTERIORE	FLANGE
0170	4-115953	STELO	ROD
0171	4-115957	TIRANTE	TIE ROD
0172	4-115954	CAVALLOTTO	SUPPORT



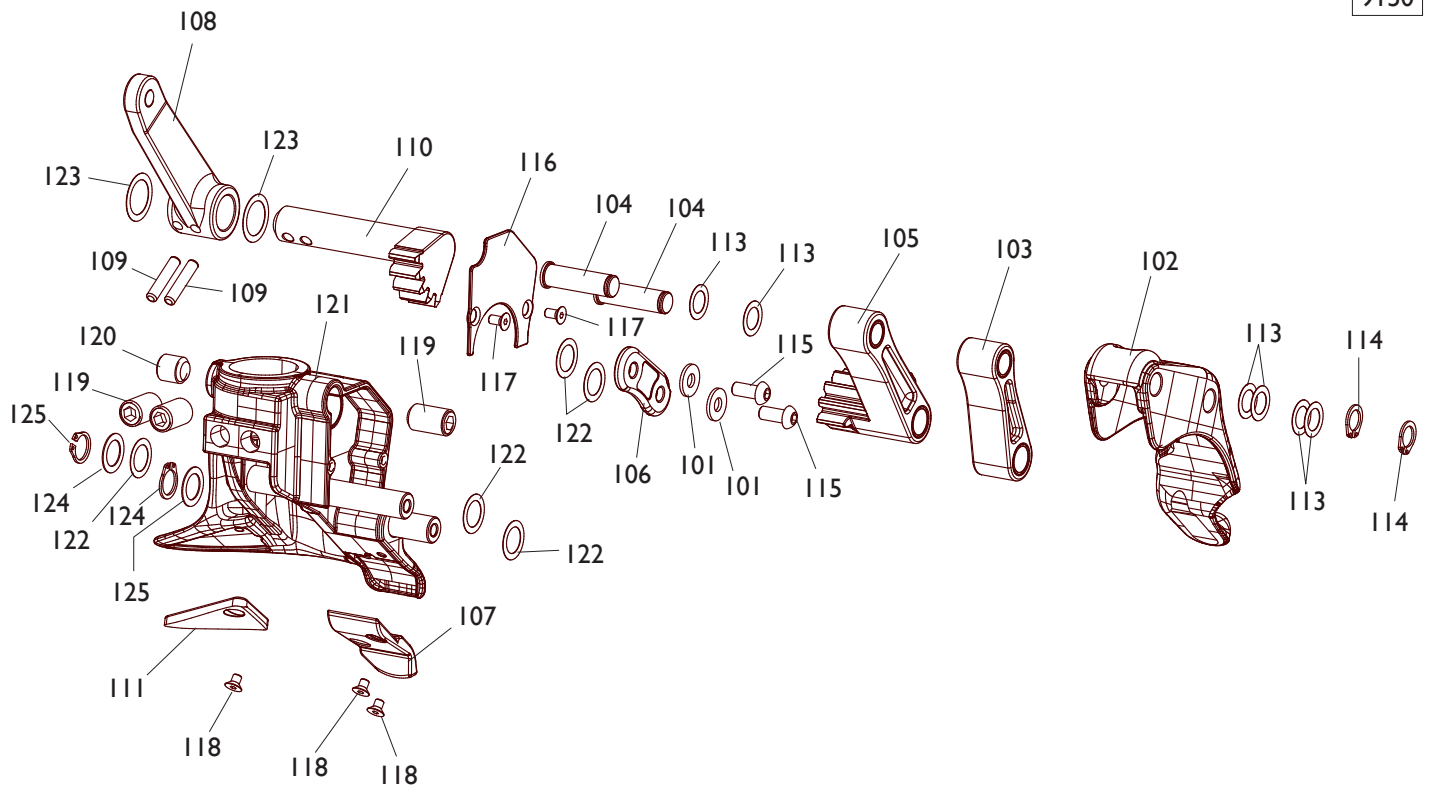
	MTS40-20 LL	Fig. A I	03 / I I	Cilindro comando ut ./Valv.
--	--------------------	-----------------	-----------------	------------------------------------

9050	5-100035	CILINDRO COMANDO UTENSILE	CYLINDER
0052	2-03391	TERMINAALE	TERMINAL
0053	4-101460	STELO	ROD
0054	4-104722	MANIGLIA	HANDLE
0055	361519	FLANGIA ANT.	FLANGE
0056	4-106258	CAMICIA	LINER
0057	361975	FLANGIA POST.	FLANGE
0058	4-106257	TIRANTE	BOLT
0059	2-01137	DADO	NUT
0060	3-00461	RACCORDO	CONNECTOR
0061	3-00053	RACCORDO	CONNECTOR
0062	2-02123	VITE	SCREW
0063	2-91680	DADO	NUT

9052	5-101255	GR.VALVOLA S/MONTAGGIO	VALVE GROUP
0071	4-103904	ADESIVO RIBALTAMENTO	LABEL
0072	4-103903/90	CARTER	CASING
0073	2-00314	VITE	SCREW
9051	5-102723	VALVOLA	VALVE
0065	3-00053	RACCORDO	CONNECTOR
0074	3-00181	REGOLATORE	REGULATOR
0075	3-00711	POMOLO	HANDLE
0076	3-00374	VALVOLA	VALVE

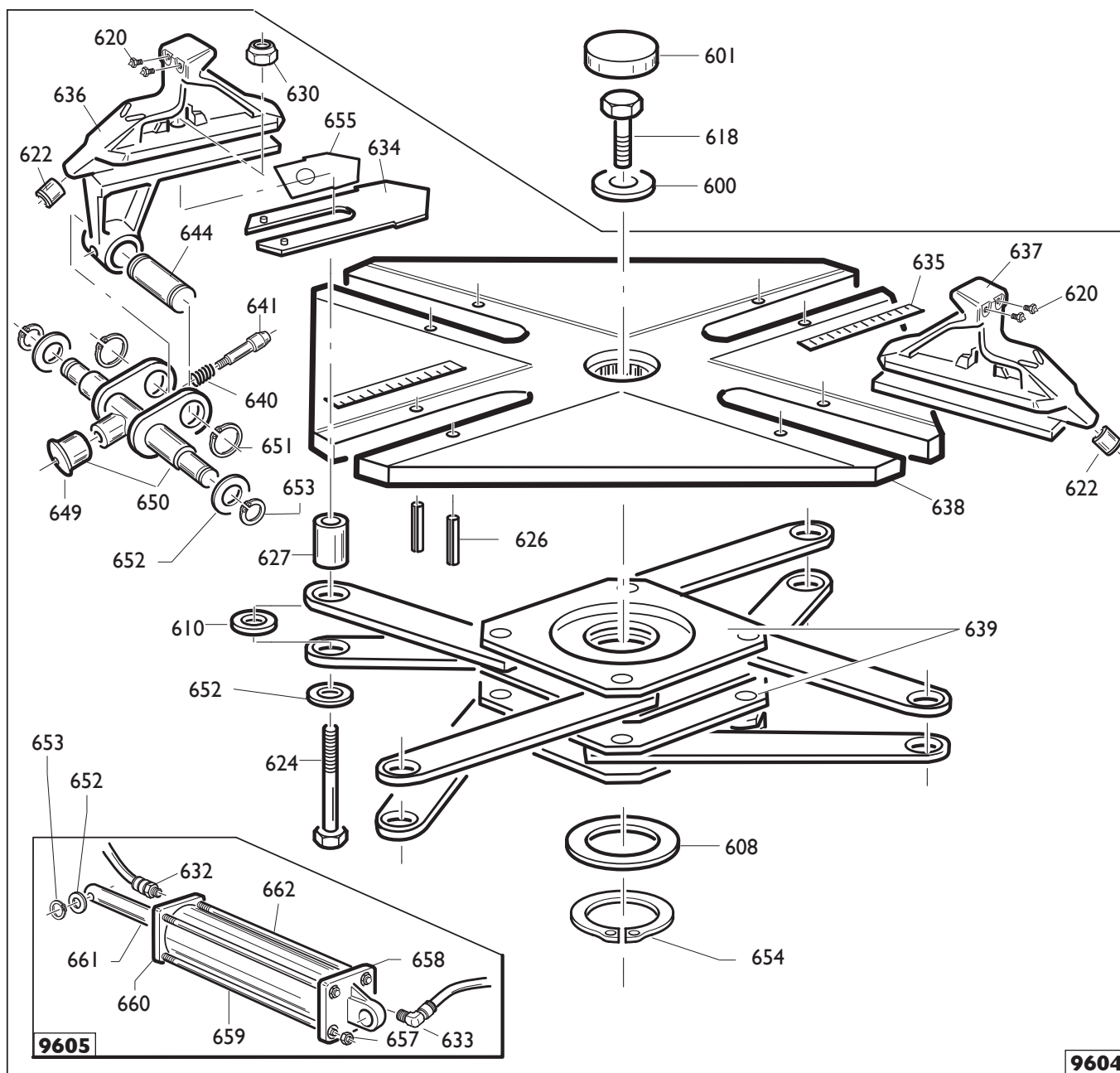
0064	262382	KIT GUARNIZIONI	GASKET KIT
------	--------	-----------------	------------

9150



	MTS40-20 LL	Fig. B	11 / 13	Utensile
--	--------------------	---------------	----------------	-----------------

9150	5-104774	TORRETTA	HEAD
0101	453469	RONDELLA D.6,3X14,8X1,5	WASHER
0102	4-115079	GANCIO	HOOK
0103	5-101265	BIELLA	TRACE
0104	4-103932	PERNO	PIN
0105	5-104772	BIELLA	TRACE
0106	4-115080	LAMIERA	METAL SHEET
0107	4-103502	INSERTO	INSERT
0108	4-103256	LEVA	LEVER
0109	2-03737	SPINA D.5X24	PLUG
0110	4-103264	INGRANAGGIO	GEAR
0111	4-106611	INSERTO	INSERT
0113	314589	RONDELLA D.10X16X0,2	WASHER
0114	2-00023	SEEGER D.10	SEEGER
0115	2-03409	VITE M6X14	SCREW
0116	4-106610	COPERTURA	CASING
0117	2-72205	VITE M4X8	SCREW
0118	2-03438	VITE M4X6	SCREW
0119	2-02096	GRANO M12X20	SCREW
0120	2-01040	GRANO M12X12	SCREW
0121	4-115182	TORRETTA+PERNI	TOOL+PINS
0122	4-103928	RONDELLA D.12,2X18X0,2	WASHER
0123	4-104696	RONDELLA D.16X22X0,2	WASHER
0124	315274	RONDELLA D.12X18X0,5	WASHER
0125	2-00025	SEEGER D.12	SEEGER

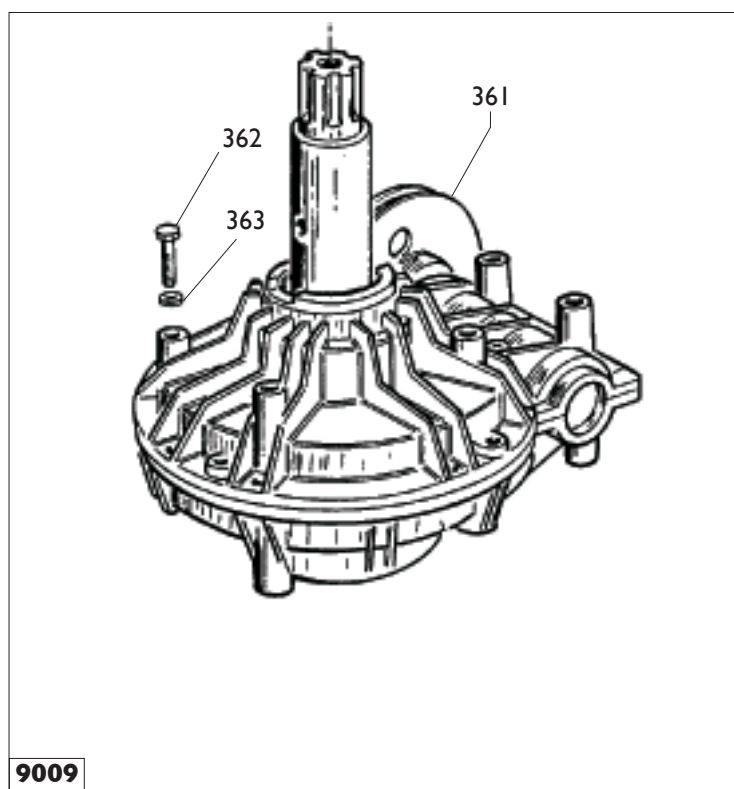
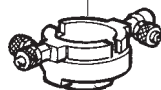


0600	323363	RONDELLA	WASHER
0601	426514	TAPPO	PLUG
0613	238548	KIT GUARNIZIONI	SEALS KIT
0618	2-01216	VITE	SCREW

9604	5-100461	AUTOCENTRANTE T.I.	TURNTABLE T.I.
0608	455082	RONDELLA	WASHER
0610	437964	RONDELLA	WASHER
0620	339146	PUNTE DI BLOCC.	LOCKING PEAK
0622	441100	RACCORDO	CONNECTOR
0624	2-02199	VITE	SCREW
0626	2-01059	SPINA	PLUG
0627	353803	BOCCOLA	BUSHING
0630	2-02200	DADO	NUT
0634	4-101441	COPRIASOLA	COVER
0635	4-101456	TARGHETTA	DATA PLATE
0636	5-100460	APPOGG. T.I. TRAINANTE	RIM SUPPORT T.I.
0637	5-100459	APPOGG. T.I. TRAINATO	RIM SUPPORT T.I.
0638	4-101438	PIATTO	PLATE
0639	4-101651	FLANGIA	FLANGE
0640	4-101422	MOLLA	SPRING
0641	4-101444	INNESTO	PIN
0644	4-101442	PERNO	PIN
0649	4-109834	POMOLO	KNOB
0650	5-103522	KIT MANOVELLE+POMOLI (2 PZ)	CRANK
0651	2-71587	SEEGER D.20	SEEGER
0652	2.00214	RONDELLA D.12	WASHER
0653	2-00025	SEEGER D.12	SEEGER
0654	2-01283	SEEGER D.65	SEEGER
0655	4-101453	SLITTA	SLIDE

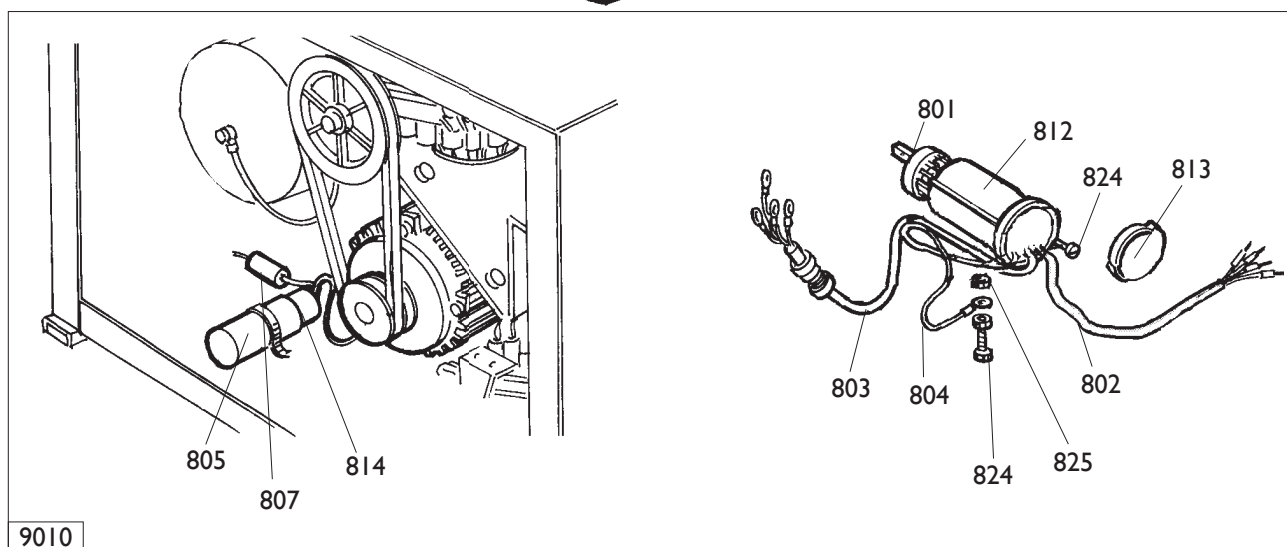
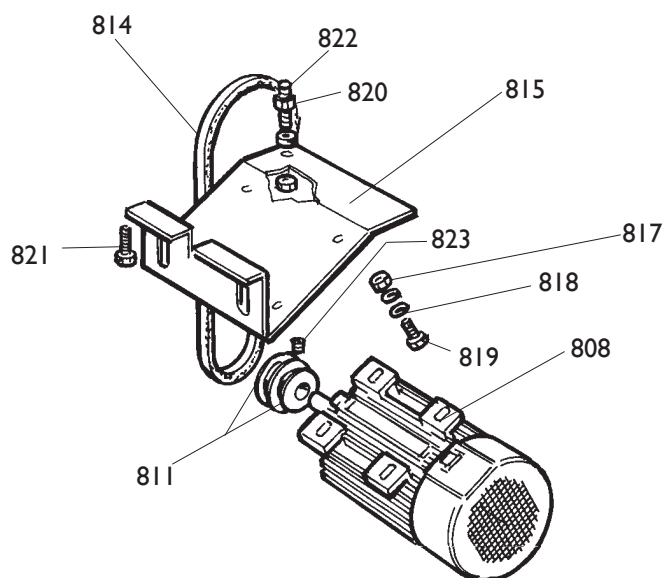
9605	5-100455	CILINDRO DESTRO	CYLINDER RIGHT
9605	5-100454	CILINDRO SINISTRO	CYLINDER LEFT
0632	3-02045	RACCORDO	CONNECTOR
0633	3-02044	RACCORDO	CONNECTOR
0657	2-01137	DADO M8	NUT
0658	4-115948	FLANGIA POST.	FLANGE
0659	4-115951	CAMICIA	LINER
0660	5-105111	FLANGIA ANT.	FLANGE
0661	4-115959	STELO	ROD
0662	4-115949	TIRANTE	BOLT

707

**9009**

	MTS40-20	Fig. D	03 / II	Riduttore
--	-----------------	---------------	----------------	------------------

9009	5-102647	RIDUTTORE	GEAR BOX
9009	239555	RIDUTTORE pneumatico	GEAR BOX air
9009	5-102648	RIDUTTORE DV	GEAR BOX DV
0361	319073	PULEGGIA (pnem.)	PULLEY
0361	314344	PULEGGIA	PULLEY
0362	2-01046	VITE M10X55	SCREW
0363	2-00213	RONDELLA M10	WASHER
0707	228389	RACC.GIREV. (NO T.I.)	CONNECTOR



9010

	MTS40-20 LL	Fig. E	03 / 12	Impianto elettrico + motore
--	--------------------	---------------	----------------	------------------------------------

9010	5-103989	IMPIANTO ELETTR. 110V 1ph	ELECTRIC SYSTEM 110V 1ph
0801	5-102741	INVERTITORE	REVERSER
0802	447801	CAVO RETE	CABLE
0803	249590	CAVO MOTORE	CABLE
0804	249601	CAVALLOTTO	U-BOLT
0805	430750	CAPPELLOTTO	CAP NUT
0807	430770	RESISTENZA	RESISTANCE
0814	4-112706	CONDENSATORE 50 mf	CAPACITOR

9010	249881	IMPIANTO ELETTR. 230V 1ph	ELECTRIC SYSTEM 230V 1ph
0801	5-102742	INVERTITORE	REVERSER
0802	235520	CAVO RETE	CABLE
0803	225419	CAVO MOTORE	CABLE
0804	225438	CAVALLOTTO	U-BOLT
0805	414850	CAPPELLOTTO	CAP NUT
0807	430770	RESISTENZA	RESISTANCE
0814	449750	CONDENSATORE	CAPACITOR

9010	235574	IMPIANTO ELETTR. 3ph	ELECTRIC SYSTEM 3ph
0801	5-102742	INVERTITORE	REVERSER
0802	235518	CAVO RETE	CABLE
0803	225390	CAVO MOTORE	CABLE
0804	225051	CAVALLOTTO	U-BOLT

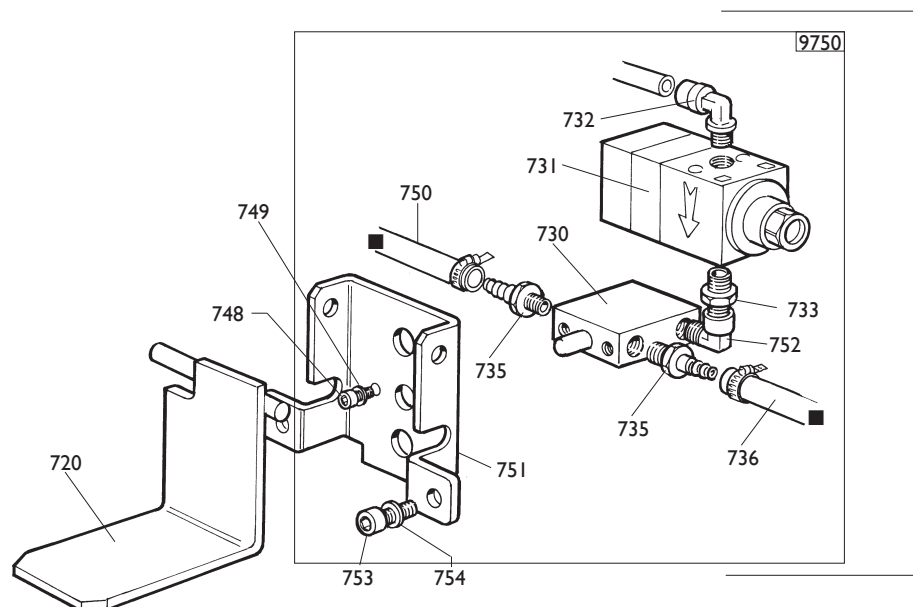
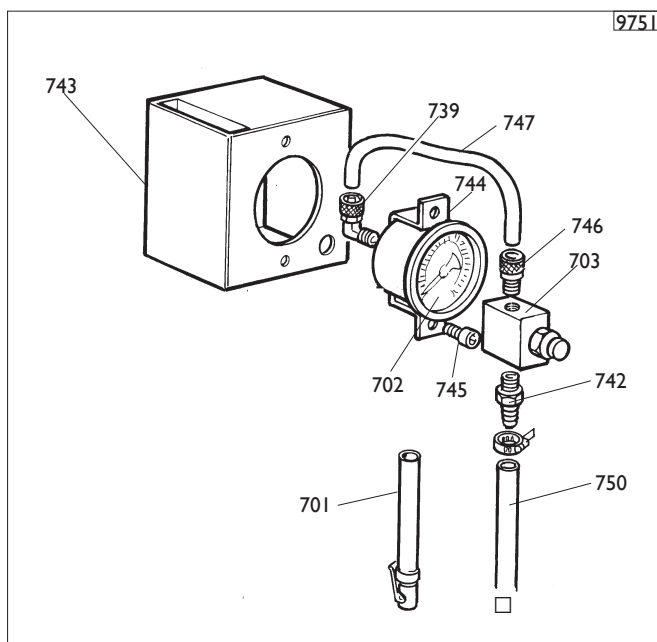
		MOTORE	MOTOR
0808	422013	3ph 230/400V	3ph 230/400V
0808	425397	3ph 240/440V	3ph 240/440V
0808	4-115122	1ph 230V 50Hz	1ph 230V 50Hz
0808	449748	1ph 230V 60Hz	1ph 230V 60Hz
0808	4-112454	1ph 110V 60Hz	1ph 110V 60Hz

0811	331067	PULEGGIA	PULLEY
0812	432065	PROTEZIONE	SHIELD
0813	430991	COPERCHIO	LID
0815	334768	CULLA	CRADLE
0816	3-00555	CINGHIA	BELT
0817	421349	DADO M8	NUT
0818	339208	RONDELLA M8	WASHER
0820	2-00152	DADO M10	NUT
0821	2-00328	VITE M10X20	SCREW
0822	455920	VITE SPEC M10X60	SCREW
0823	2-01091	VITE M6X5	SCREW
0824	2-00605	VITE M4X10	SCREW
0825	2-00143	DADO M4	NUT

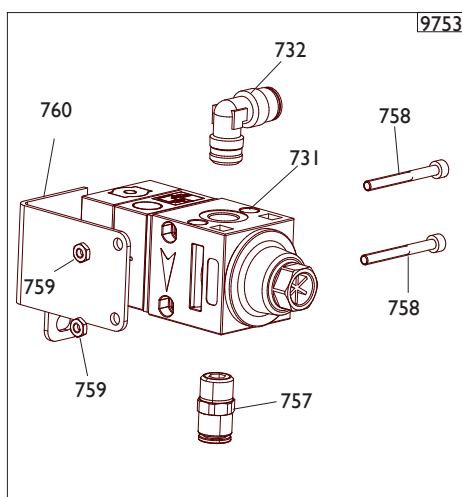
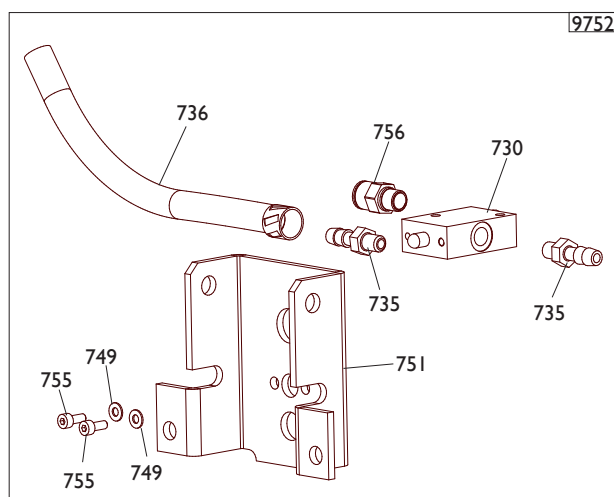


	MTS40-20 LL	Fig. F	03A / II	Pedaliera
--	--------------------	---------------	-----------------	------------------

9550	233678	PEDALIERA	CONTROL PEDAL
9550	5-100714	PEDALIERA DV MI	MOTOINVERTER CONTROL PEDAL
0501	3-00183	SILENZIATORE	SILENCER
0503	325019	BALESTRA	LEAF SPRING
0504	425020	CAMMA	CAM
0505	325018	CAVALLOTTO	U-BOLT
0506	425014	BIELLA	TRACE
0508	2-02247	RONDELLA	WASHER
0509	309358	RONDELLA	WASHER
0510	325005	PERNO	PIN
0511	410628	MOLLA	SPRING
0512	325031	PEDALE AUTOCENTR.	PEDAL
0513	325032	PEDALE STALL.	PEDAL
0514	325050	DISTANZIALE	SPACER
0515	5-102714	PEDALE INVERT.	PEDAL
0516	425010	BIELLA	TRACE
0517	425027	LEVA	LEVER
0518	332495	CAVALLOTTO	U-BOLT
0519	5-102739	RUBINETTO DOPPIO	COCK
0521	316199	GHIERA	NUT
0523	433675	REGOLATORE	REGULATOR
0524	524273	SUPPORTO	SUPPORT
0525	325030	PEDALE ALZAPALO	PEDAL
0526	452011	BOCCOLA	BUSHING
0527	317610	TUBO	PIPE
0528	383173	TAPPO	PLUG
0529	2-00211	RONDELLA D.6	WASHER
0530	257137	RUBINETTO SINGOLO	COCK
0531	4-109664	MOLLA	SPRING
0532	2-00025	SEEGER D.12	SEEGER
0533	2-01979	DADO M6	NUT M6
0534	2-00366	VITE M6X40	SCREW
0535	2-01137	DADO M8	NUT
0536	2-00212	RONDELLA D.8	WASHER
0537	2-00411	VITE M6X50	SCREW
0538	2-00312	VITE M6X25	SCREW
0539	2-00155	DADO M6	NUT
0540	2-01272	VITE M2,9X9,5	SCREW



**FINO A 03-2013
UP TO 03-2013**



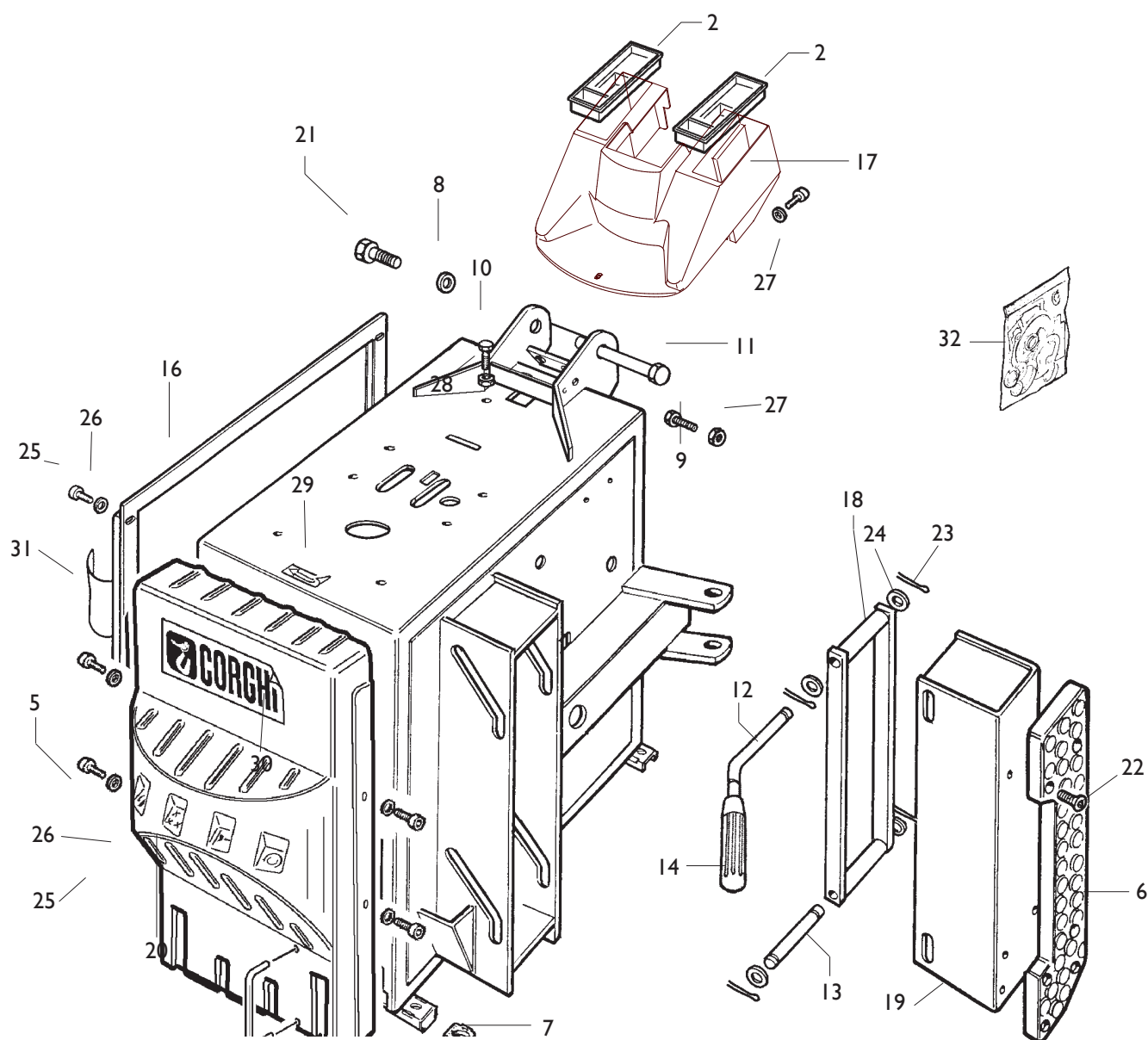
**IN PROD. DA 04-2013
SINCE 04-2013**

	MTS40-20 LL	Fig. G	04 / 13	Gruppo manometro + gruppo valvola gonfiaggio
--	--------------------	---------------	----------------	---

Ø 6	I-01684	TUBO	PIPE
Ø 8	I-01683	TUBO	PIPE
Ø 10	I-01875	TUBO	PIPE
0720	234771	PEDALE	PEDAL

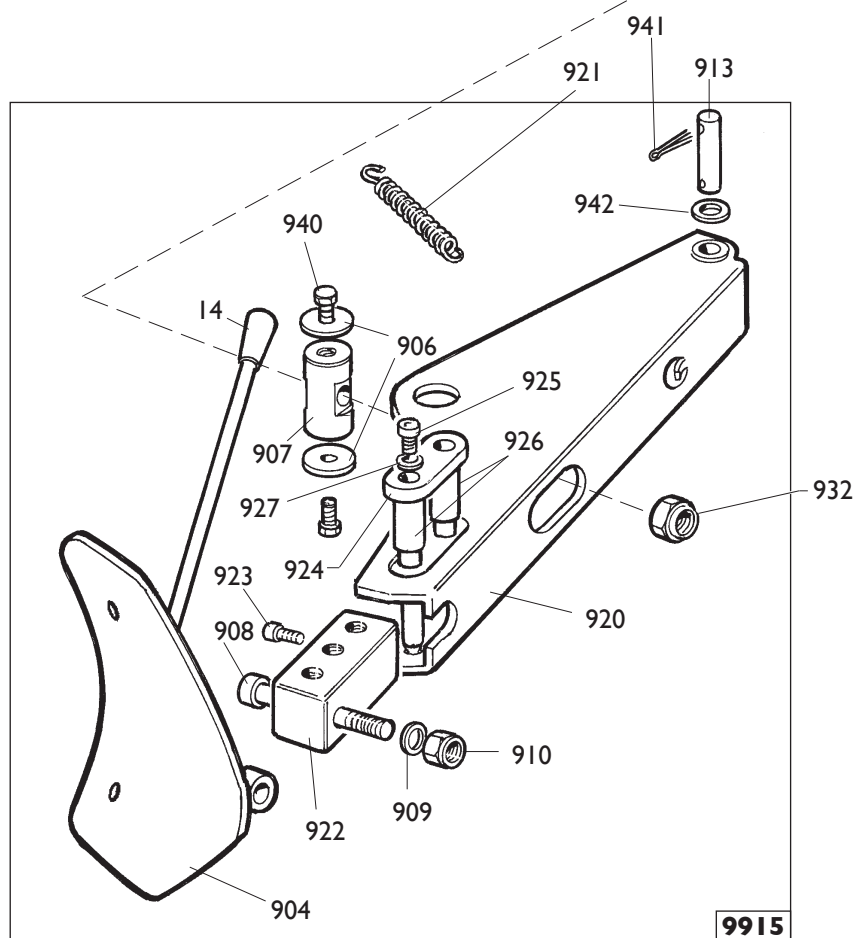
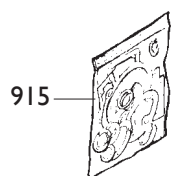
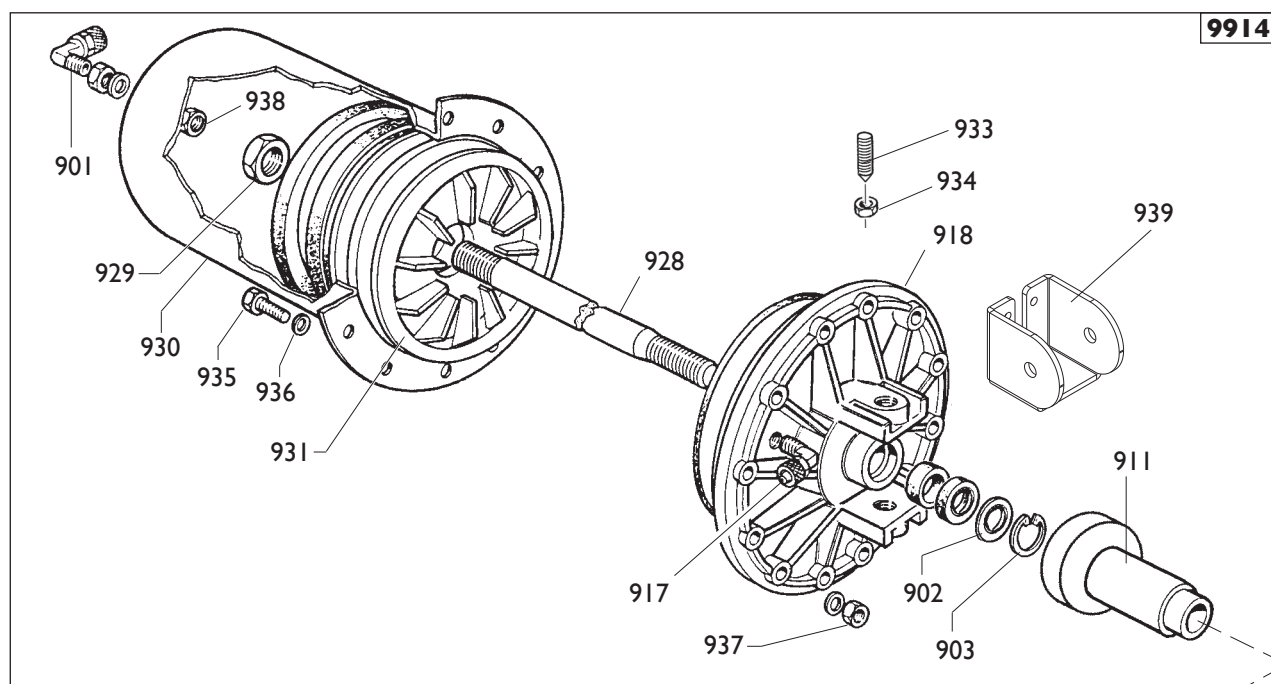
9750	252565	GRUPPO gonfiaggio	GROUP INFLATION
9752	5-105673	GRUPPO gonfiaggio	GROUP INFLATION
9753	5-105674	VALVOLA GONF + STAFFA	VALVE WITH PLATE
0730	3-00365	VALVOLA	VALVE
0731	3-00389	VALVOLA GONFIAGGIO	VALVE
0732	3-00221	RACCORDO	CONNECTOR
0733	3-00135	NIPPLO	CONNECTION
0735	3-00004	INNESTO	CLUTCH
0736	352614	TUBO aria L.1900mm	PIPE
0750	354410	TUBO aria L.3150 mm	PIPE
0748	2-00295	VITE M4X8	SCREW
0749	2-00209	RONDELLA D4	WASHER
0751	352968	SUPPORTO	SUPPORT
0752	2-00138	RACCORDO	CONNECTOR
0753	2-00320	VITE M8X20	SCREW
0754	2-00212	RONDELLA D.8	WASHER
0755	2-00289	VITE M4X10	SCREW
0756	3-00464	RACCORDO D.8	CONNECTOR D.8
0757	3-00478	RACCORDO D.8	CONNECTOR D.8
0758	2-00851	VITE M4X40	SCREW
0759	2-02804	DADO M4	NUT
0760	4-117416	SUPPORTO	SUPPORT

9751	252599	SCATOLA - BAR/PSI	BOX - BAR/PSI
9751	259565	SCATOLA - KPA	BOX - KPA
0701	262971	TUBO GONFIAGGIO	PIPE
0702	3-00490	MANOMETRO BAR - PSI	PRESSURE GAUGE BAR - PSI
0702	3-00493	MANOMETRO KPA	PRESSURE GAUGE KPA
0703	235463	VALVOLA	VALVE
0739	3-00103	RACCORDO	CONNECTOR
0742	3-00007	INNESTO	CLUTCH
0743	234171	SCATOLA MANOMETRO	BOX
0744	353537	SUPPORTO MANOMETRO	SUPPORT
0745	2-71485	VITE M3,9X13	SCREW
0746	3-00460	RACCORDO	CONNECTOR
0747	325035	TUBO D.6 L.180 mm	PIPE
0750	354410	TUBO aria L.3150 mm	PIPE



	MTS40-20 LL	Fig. H	03 / II	Cassone
--	--------------------	---------------	----------------	----------------

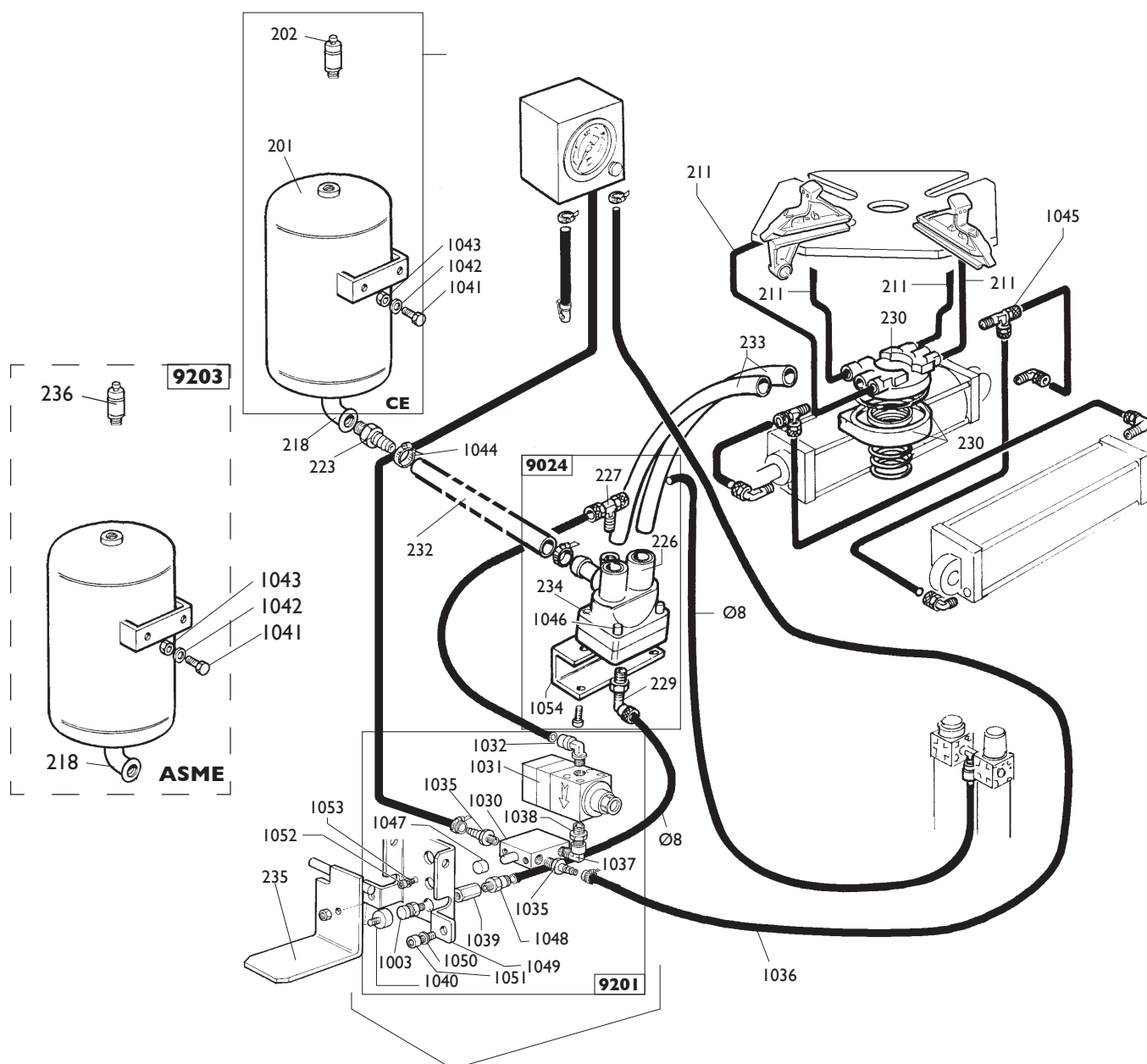
0002	428845	COPERCHIO	LID
0005	426768	PROTEZIONE	SHIELD
0006	436199	APPOGGIO	RIM SUPPORT
0007	422019	PIEDE	FOOT
0008	318183	RONDELLA	WASHER
0009	322348	VITE M10x20	SCREW
0010	320191	VITE M8x30	SCREW
0011	331055	PERNO PALO	PIN
0012	339456	PERNO MANIGLIA	PIN
0013	339046	PERNO BIELLA	PIN
0014	425219	MANOPOLA	KNOB
0016	5-101007	COFANO+ADESIVI	HOOD+LABEL
0017	4-109098	PROTEZIONE	SHIELD
0018	239050	BIELLA	ROD
0019	238911	PROLUNGA APPOGGIO	SUPPORT
0020	4-102232	ADESIVO	LABEL
0021	2-01225	VITE	SCREW
0022	2-01885	VITE M6X25	SCREW
0023	2-00047	COPIGLIA D.3X30	SCREW
0024	2-01045	RONDELLA D.16	WASHER
0025	2-00310	VITE M6X20	SCREW
0026	2-00211	RONDELLA D.6	WASHER
0027	2-00113	DADO M10	NUT
0028	2-00112	DADO M8	NUT
0029	418135	ADESIVO ROTAZIONE	LABEL
0030	460384	ADESIVO CORGHI	LABEL
0031	4-100566	ADESIVO MTS	LABEL
0032	5-104896	KIT ADESIVI MTS40-20 LL	LABEL KIT TS40-20 LL



9914	5-100484	CILINDRO	CYLINDER
0901	3-00517	RACCORDO	CONNECTOR
0902	325561	RONDELLA	WASHER
0903	434031	ANELLO	RING
0917	3-001222	RACCORDO	CONNECTOR
0918	351905	FLANGIA	FLANGE
0935	2-00310	VITE M6x20	SCREW
0936	2-00211	RONDELLA D.6	WASHER
0937	436779	DADO M6	NUT
0938	333524	DADO 1/4	NUT

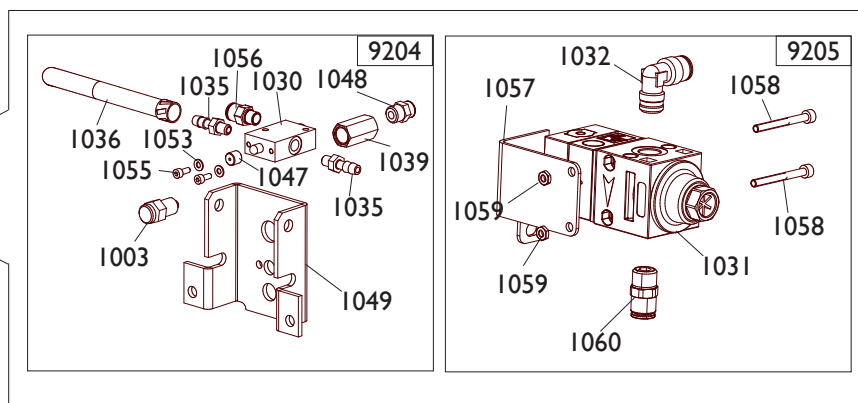
9915	245743	BRACCIO	ARM
0014	425219	MANIGLIA	HANDLE
0904	224000	PALETTA	BEAD BREAKER
0906	323901	RONDELLA	WASHER
0907	339045	PERNO	PIN
0908	324008	VITE M12x90	SCREW
0909	2-02249	RONDELLA	WASHER
0910	422255	DADO	NUT
0920	245701	BRACCIO	ARM
0922	345618	BLOCCHETTO	BLOCK
0923	2-00308	VITE	SCREW
0924	345616	FERMO	RETAINER
0925	2-00372	VITE	SCREW
0926	345617	PUNTE	LOCKING
0927	2-01299	RONDELLA	WASHER

0911	239061	TAMPONE	PAD
0913	323903	FULCRO	FULCRUM
0915	238212	KIT GUARNIZIONI	SEALS KIT
0921	4-101930	MOLLA	SPRING
0928	4-101628	STELO	SHAFT
0929	2-00989	DAMO M18	NUT
0930	330190	CILINDRO	CYLINDER
0931	337848	PISTONE	PISTON
0932	2-01242	DADO M18	NUT
0933	431864	VITE	SCREW
0934	2-00992	DADO M14	NUT
0939	4-101742	SUPPORTO BRACCIO	ARM SUPPORT
0940	3-00372	VITE	SCREW
0941	435055	MOLLA D.2X10	SPRING
0942	2-01045	RONDELLA D.16	WASHER



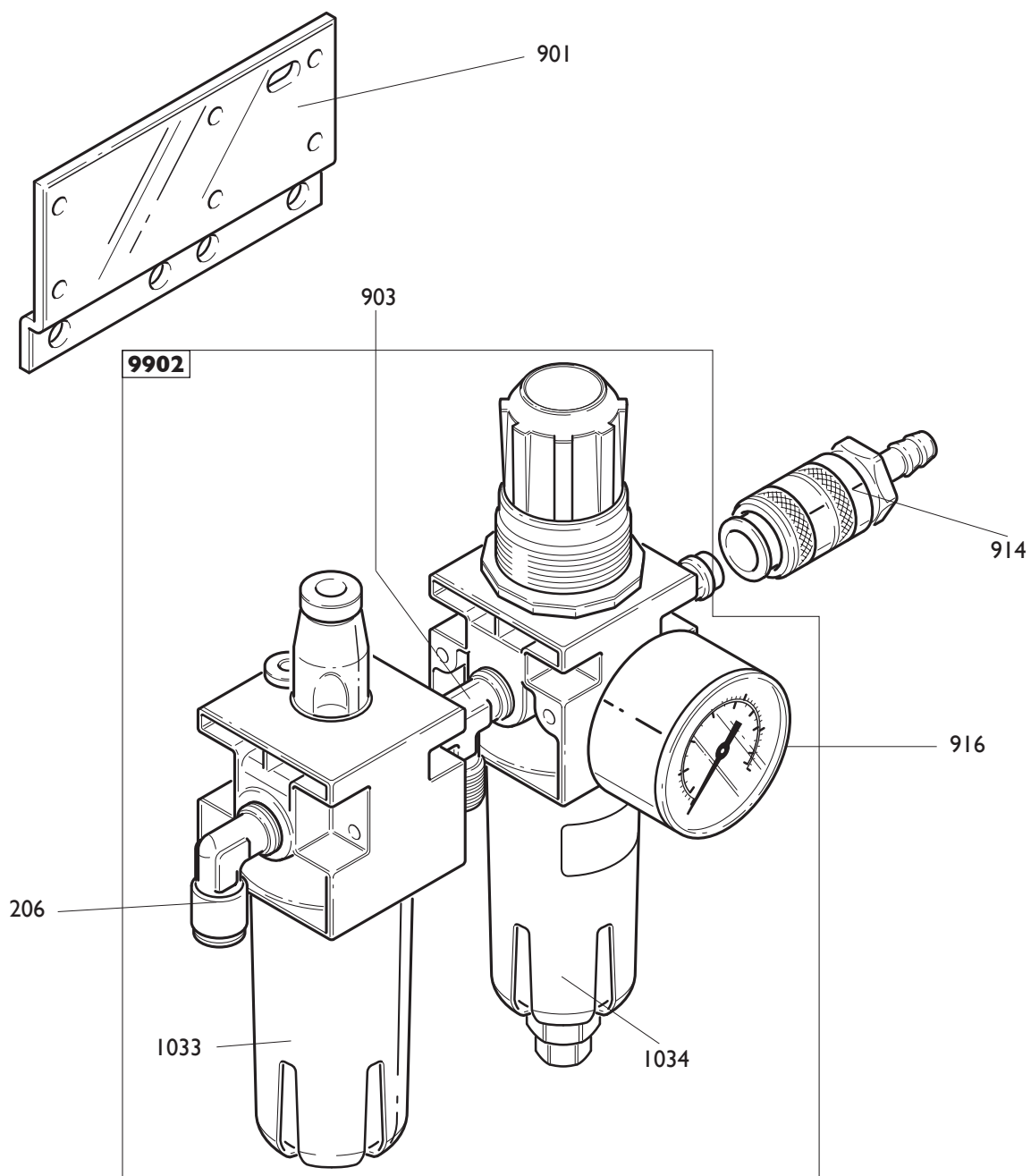
**FINO A 03-2013
UP TO 03-2013**

**IN PROD. DA 04-2013
SINCE 04-2013**



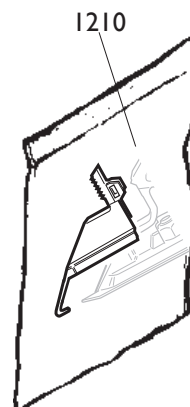
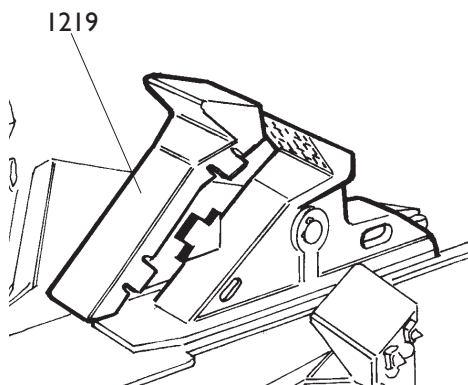
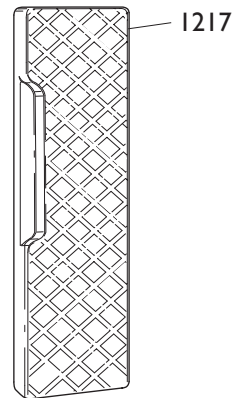
	MTS40-20 LL	Fig. L	04 / 13	Versione T.I.
--	--------------------	---------------	----------------	----------------------

Ø 6	I-01684	TUBO	PIPE
Ø 8	I-01683	TUBO	PIPE
9203	5-100580	SERBATOIO ASME	TANK ASME
0236	3-00278	VALVOLA	VALVE
0201	240968	SERBATOIO CE	TANK
0202	3-00356	VALVOLA	VALVE
0211	I-04223	TUBO	PIPE
0218	438995	RACCORDO	CONNECTOR
0223	337704	RACCORDO	CONNECTOR
0235	252625	PEDALE	PEDAL
9024	242290	VALVOLA DI SPARO CPL	VALVE FIRING CPL
0226	3-00403	CARTUCCIA	CARTRIDGE
0227	3-00287	RACCORDO	CONNECTOR
0229	3-00051	RACCORDO	CONNECTOR
0234	243020	VALVOLA DI SPARO	VALVE FIRING
1046	2-94066	VITE M6X40	SCREW
1054	342286	STAFFA	BRACKET
0230	241841	RACC.GIREVOLE T.I.	CONNECTOR
0232	4-102573	TUBO	PIPE
0233	342289	TUBO	PIPE
1041	2-00373	VITE M8X20	SCREW
1042	2-00212	RONDELA D.8	WASHER
1043	2-00112	DADO M8	NUT
1044	403751	FASCETTA	FASTEN
1045	3-00117	RACCORDO	CONNECTOR
9201	252568	GRUPPO gonfiaggio	GROUP INFLATION
9204	5-105676	GRUPPO gonfiaggio	GROUP INFLATION
9205	5-105674	VALVOLA GONF. + STAFFA	VALVE WITH PLATE
1003	235463	VALVOLA SGONFIAGGIO	VALVE
1030	3-00365	VALVOLA	VALVE
1031	3-00389	VALVOLA GONFIAGGIO	VALVE
1032	3-00221	RACCORDO	CONNECTOR
1035	3-00004	INNESTO	CLUTCH
1036	352614	TUBO aria L.1900mm	PIPE
1037	3-00138	RACCORDO D.6	CONNECTION D.6
1038	3-00135	NIPPLO	CONNECTION
1039	338576	DISTANZIALE	SPACE
1040	452624	ANTIVIBRANTE	ANTISHOCK
1047	352619	CAPPELLOTTO	BOLT
1048	3-00460	RACCORDO	CONNECTOR
1049	352968	SUPPORTO	SUPPORT
1050	2-00212	RONDELLA D.8	WASHER
1051	2-00320	VITE M8	SCREW
1052	2-00295	VITE M4X8	SCREW
1053	2-00209	RONDELLA D.4	WASHER
1055	2-00289	VITE M4X10	SCREW
1056	3-00464	RACCORDO D.8	CONNECTOR D.8
1057	4-117416	SUPPORTO	SUPPORT
1058	2-00851	VITE M4X40	SCREW
1059	2-02804	DADO M4	NUT
1060	3-00478	RACCORDO D.8	CONNECTOR D.8



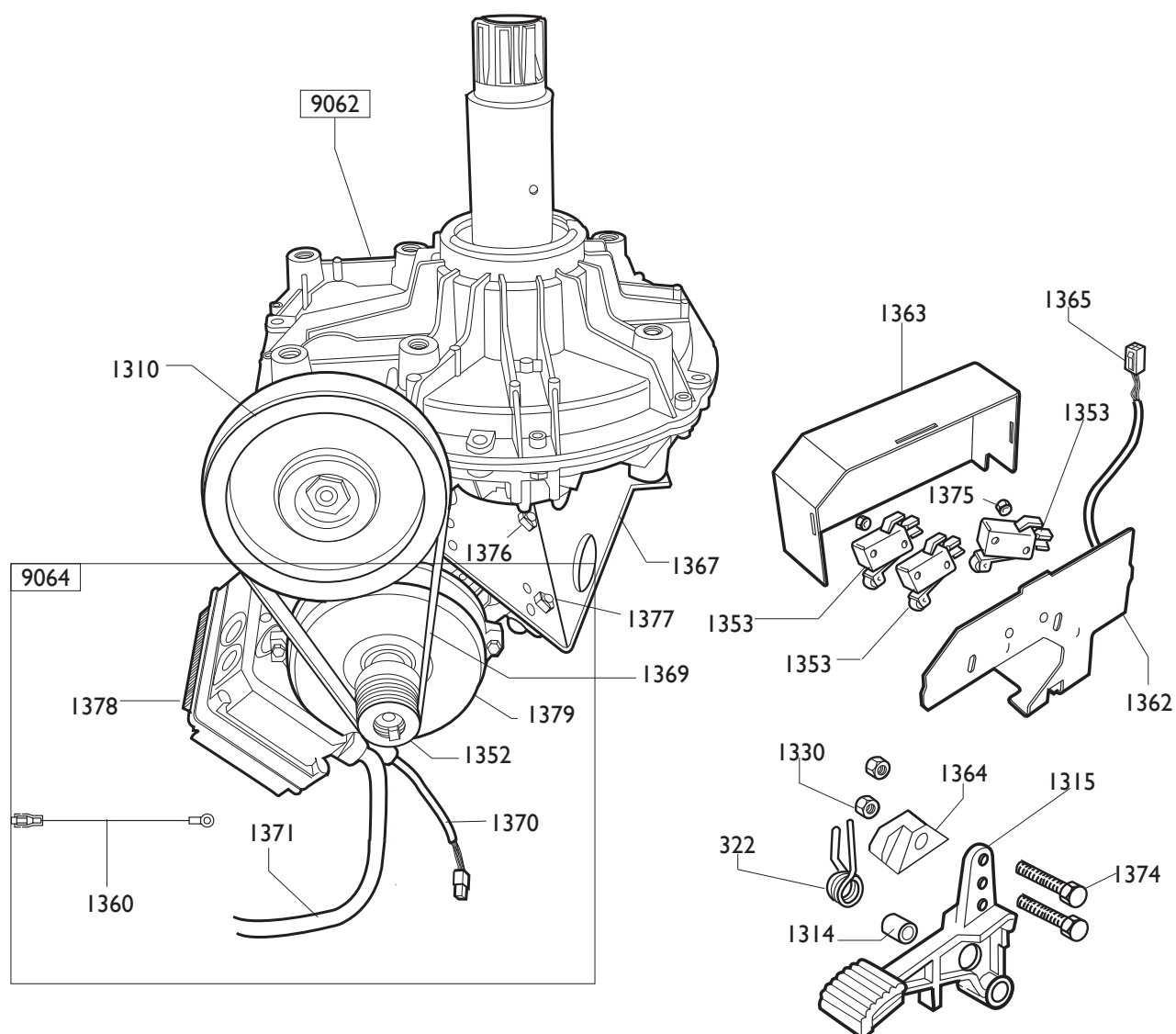
	MTS40-20 LL	Fig. M	03 / II	Gruppo filtro
--	--------------------	---------------	----------------	----------------------

0901	335695	STAFFA	BRACKET
0914	3-00257	GIUNTO	CUOPLING
9902	456522	FILTRO	FILTER
1037	457511	BICCHIERE LUBRIF.	BOWL
1038	457512	BICCHIERE FILTRO	BOWL
0903	2-00001	RACCORDO	CONNECTOR
0916	3-00488	MANOMETRO	PRESSURE GAUGE
0206	3-00221	RACCORDO	CONNECTOR



	MTS40-20 LL	Fig. N	03 / 11	Accessori
--	--------------------	---------------	----------------	------------------

1210	8-11100109	KIT 12 PROTEZIONI EST.	SHIELD
1217	801458663	PROTEZIONE	SHIELD
1219	8-11100108	KIT 12 PROTEZ.CUNEO	SHIELD
1220	8-11100105	KIT 6 PROTEZ.PALETТА	SHIELD



MOTORE+INV 2 CONDENSATORI			MOTOR+REV.
9064	5-104986	200-230V I _{ph}	200-230V I _{ph}
1352	4-102397	PULEGGIA	PULLEY
1360	4-101659	CAVO TERRA	CABLE
1370	4-109895	CAVO COMANDI 230V	CABLE
1371	4-111586	CAVO RETE	CABLE
1378	4-115396	SCHEDA ELETTR. 230V	P.C.BOARD
1379	4-113412	MOTOINV. (NO SK) 200-230/1/50-60HZ	MOTOINVERTER 230V

MOTORE+INV			MOTOR+REV..
9064	5-104995	115V I _{ph}	115V I _{ph}
1352	4-102397	PULEGGIA	PULLEY
1360	4-101659	CAVO TERRA	CABLE
1371	4-111586	CAVO RETE	CABLE
1378	4-113414	SCHEDA ELETTR. 115V	P.C.BOARD
1370	4-109895	CAVO COMANDI 115V	CABLE
1379	4-113412	MOTOINV. (NO SK) 115V	MOTOINVERTER 115V

9062	5-102648	RIDUTTORE	GEAR BOX
1310	339870	PULEGGIA	PULLEY

0322	4-109664	MOLLA	SPRING
1314	325050	DISTANZIALE	SPACER
1315	5-102714	PEDALE	PEDAL
1330	346008	BOCCOLA	BUSHING
1353	440874	MICROINTERUTORE	MICROSWITCH
1362	4-102401	SUPPORTO MICRO	SUPPORT
1363	4-102402	COPERCHIO	CASING
1364	461535	SUPPORTO MICRO	SUPPORT
1365	4-101693	CAVO COMANDI PEDALIERA	CABLE
1367	4-109965	CULLA MOTORE 230/115V	SUPPORT
1369	3-00573	CINGHIA	BELT
1374	2-00441	VITE M6X50	SCREW
1375	2-00124	DADO M4	NUT
1376	421349	DADO M8	NUT
1377	2-00375	VITE M8X30	SCREW

Il disegno è realizzato con tutti i particolari ma solo quelli codificati sono forniti come ricambi. L'Azienda si riserva la facoltà di apportare modifiche senza preavviso.



Strada Statale 468, n°9 - 42015 Correggio (RE) ITALY
Tel. ++39 0522 639111 - Fax ++39 0522 639150
www.corgi.com - info@corgi.com

The drawing shows all parts but only the coded parts are supplied as spares. The Company reserves the right to make modifications without prior notice.

COMIM - Cod. 4-11 I638C - II_2013.