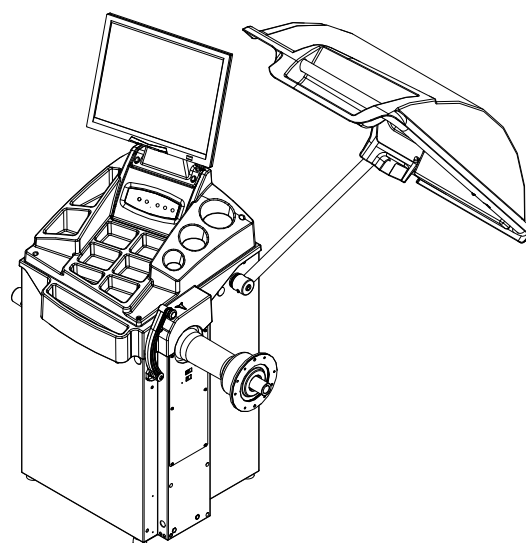


EM 9250 Compact-Line

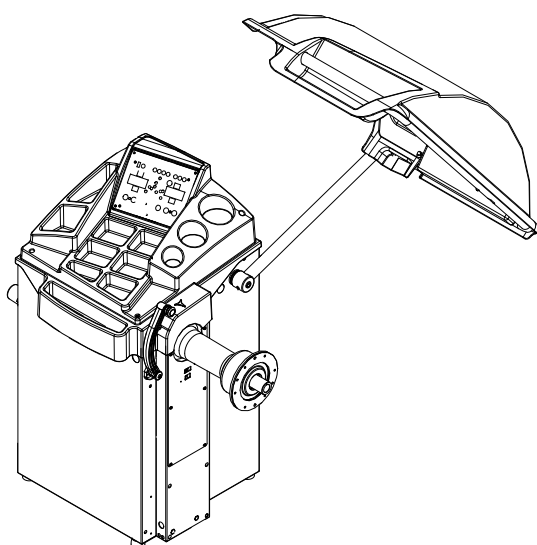
EM 9280 Compact-Line

Pezzi di ricambio / Spare parts list

EM9280 Compact-Line



EM9250 Compact-Line



Code: 4-119444

Production date: 10 / 2015



I

**Sul presente documento sono
stati evidenziati con colore
grigio i ricambi consigliati**

EN

**In this document, the
recommended spare parts have
been highlighted in gray**

DE

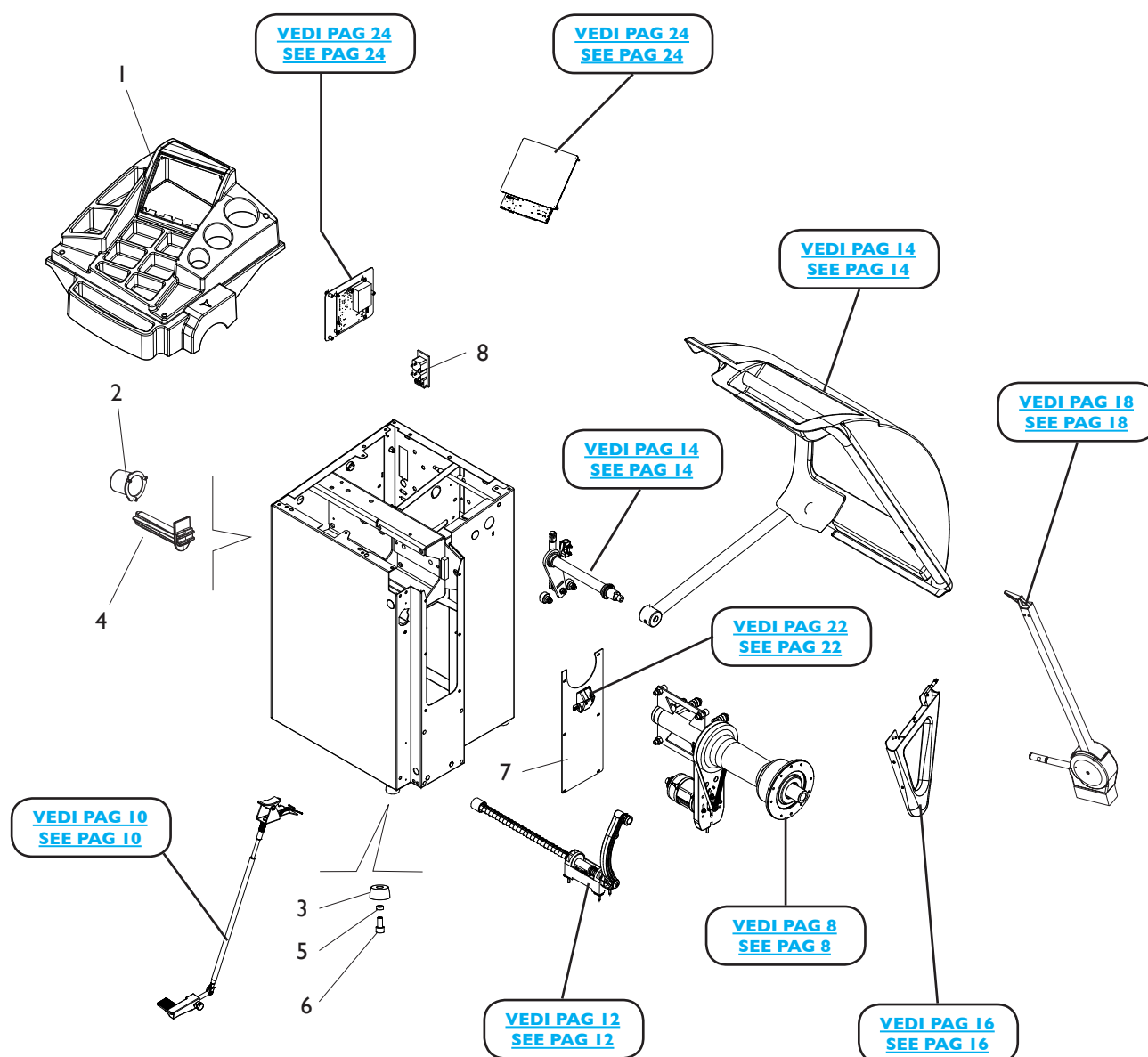
**Im vorliegenden Dokument
wurden die empfohlenen
Ersatzteile in grauer Farbe
hervorgehoben**

FR

**Dans ce document, les pièces
de rechange préconisées sont
soulignées en gris**

COMPLESSIVO EM9250 Compact-Line

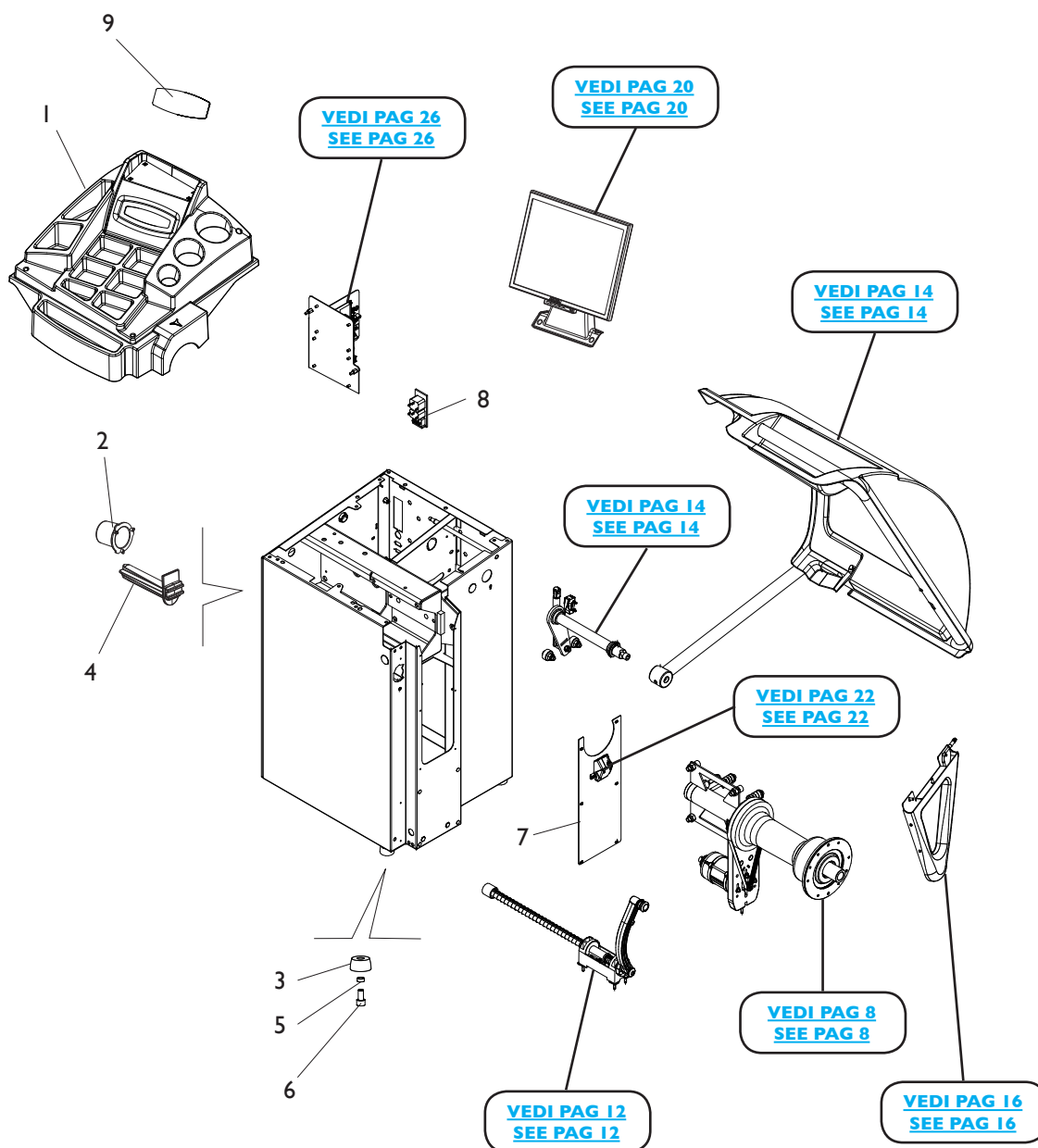
EM9250 Compact-Line OVERALL



| Rif. Ref. | Codice Code | Descrizione | Description |
|--------------|----------------|---|---------------------------------|
| 1 | 4-108650/90 | COPERCHIO PORTAPESI | WEIGHTS HOLDER |
| 2 | 4-108675 | CARTER CHIUSURA RILEVATORE | DETECTOR COVER |
| 3 | 460029 | PIEDE DI APPOGGIO | FOOT |
| 4 | 438319 | PORTAFLANGE | FLANGE SUPPORT |
| 5 | 360095 | DISTANZIALE PIEDE | FOOT SPACER |
| 6 | 2-01985 | VTCEI M10X20 | CIRC. SOCKET HEAD SCREW M10X20 |
| 7 | 4-119263 | PANN. CHIUSURA (NO ILLUMINATORE) | PANEL (NO ILLUMINATOR) |
| 7 | 4-115413 | PANN. CHIUSURA (ILLUMINATORE) | PANEL (ILLUMINATOR) |
| 8 | 3-02775 | MODULO POLYSNAP+PRESA | POLYSNAP MODULE + PLUG |

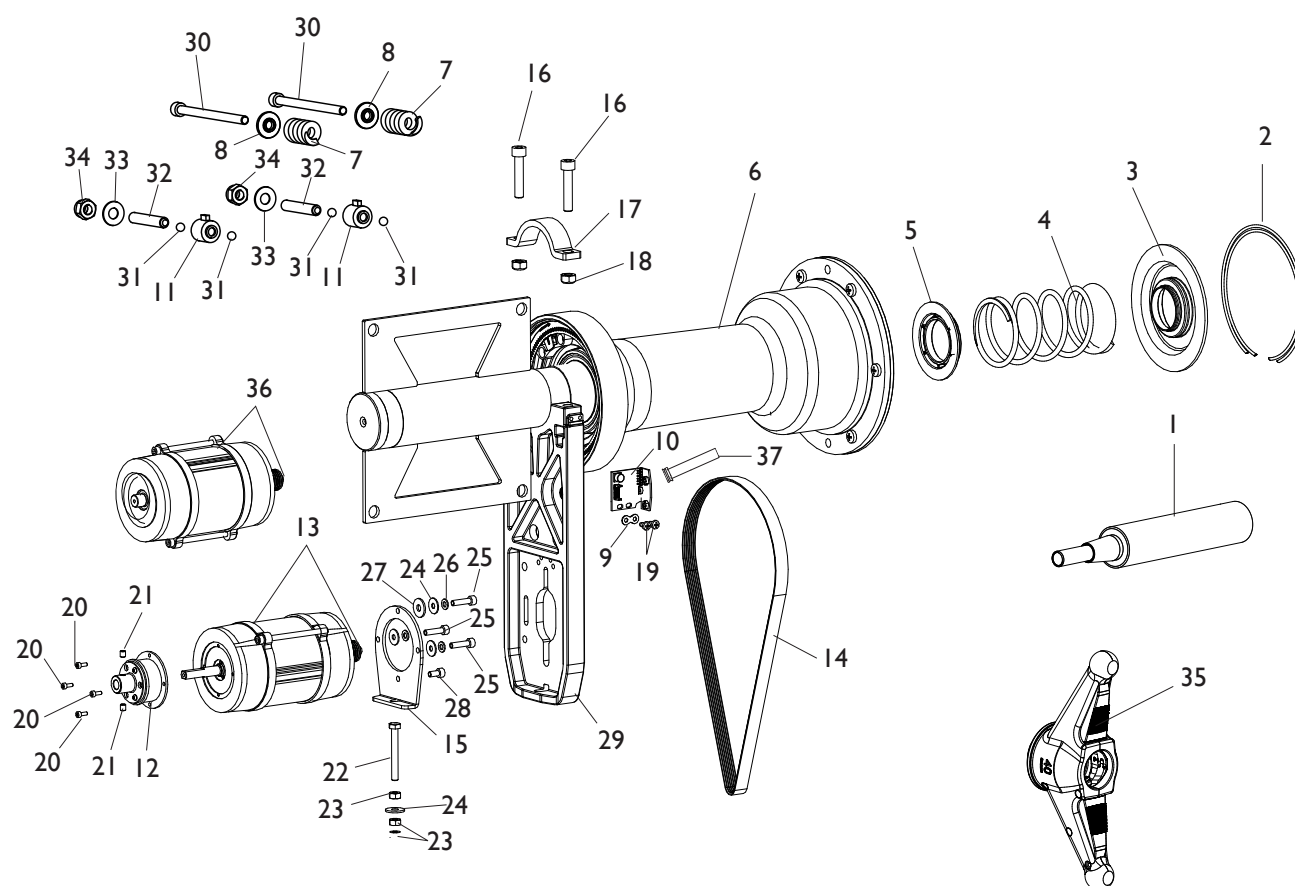
COMPLESSIVO EM9280 Compact-Line

EM9280 Compact-Line OVERALL



| Rif. Ref. | Codice Code | Descrizione | Description |
|--------------|----------------|---|---------------------------------|
| 1 | 4-108778/90 | COPERCHIO PORTAPESI | WEIGHTS HOLDER |
| 2 | 4-108675 | CARTER CHIUSURA RILEVATORE | DETECTOR COVER |
| 3 | 460029 | PIEDE DI APPOGGIO | FOOT |
| 4 | 438319 | PORTAFLANGE | FLANGE SUPPORT |
| 5 | 360095 | DISTANZIALE PIEDE | FOOT SPACER |
| 6 | 2-01985 | VTCEI M10X20 | CIRC. SOCKET HEAD SCREW M10X20 |
| 7 | 4-119263 | PANN. CHIUSURA (NO ILLUMINATORE) | PANEL (NO ILLUMINATOR) |
| 7 | 4-115413 | PANN. CHIUSURA (ILLUMINATORE) | PANEL (ILLUMINATOR) |
| 8 | 3-02775 | MODULO POLYSNAP+PRESA | POLYSNAP MODULE + PLUG |
| 9 | 5-100030 | TASTIERA | KEYBOARD |

GRUPPO OSCILLANTE OSCILLATING GROUP

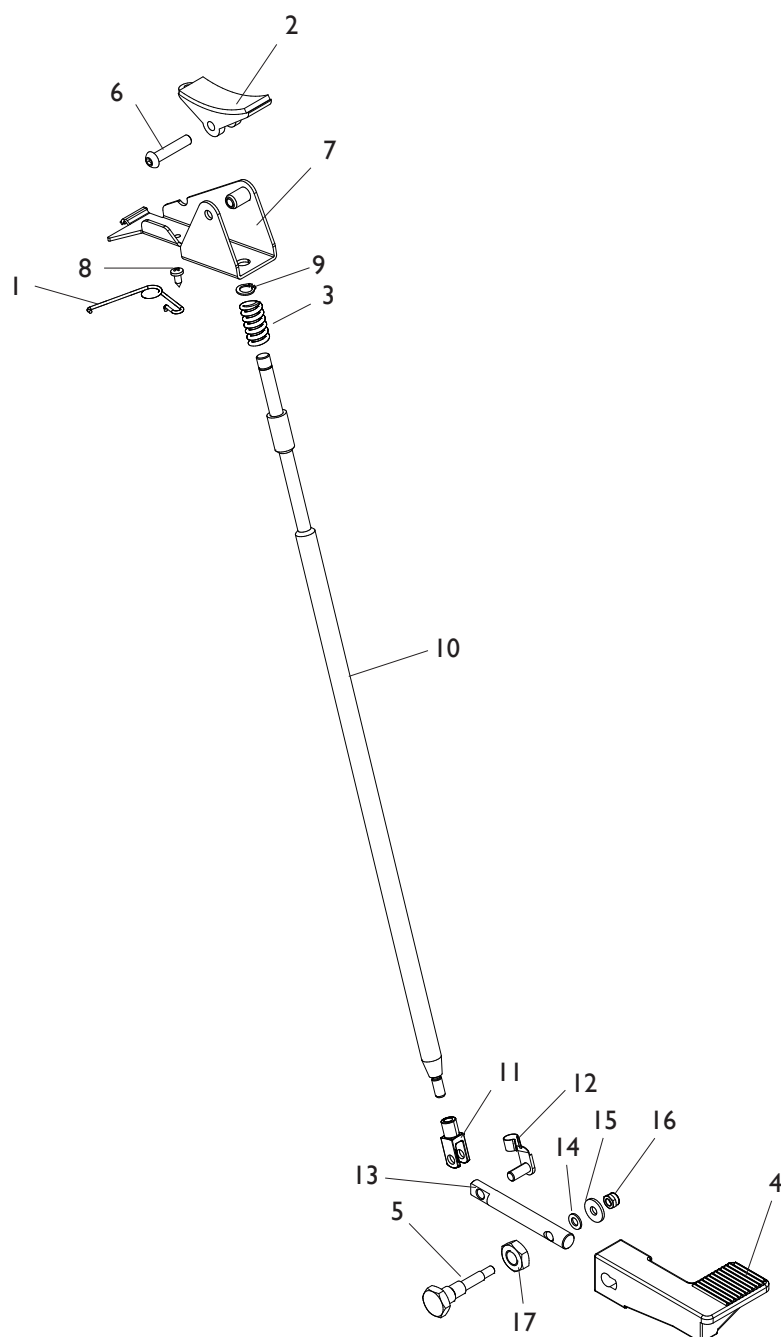


[TORNA AL COMPLESSIVO](#)
[RETURNS TO OVERALL](#)

| Rif. Ref. | Codice Code | Descrizione | Description |
|--------------|----------------|---|---|
| 1 | 5-101514 | MOZZO BLOCCAGGIO RUOTA | LOCKING WHEEL HUB |
| 2 | 4-101740 | ANELLO D.127,5X2,5 | RING D.127,5X2,5 |
| 3 | 4-104590 | DISCO PREMI MOLLA D.40 | DISC SPING COMPRESSOR D.40 |
| 4 | 4-104588 | MOLLA D.4,8X66X121 | SPRING D.4,8X66X121 |
| 5 | 4-104589 | DISCO PORTA MOLLA D.40 | DISC HOLDER SPRING D.40 |
| 6 | 5-120046 | GRUPPO OSCILLANTE | OSCILLATING GROUP |
| 7 | 4-104652 | MOLLA D.6X25X41 | SPRING D.6X25X41 |
| 8 | 4-104650 | BOCCOLA POSTERIORE MOLLA PICK UP | BUSH REAR SPRING PICK UP |
| 9 | 4-130102 | PIASTRA FISSAGGIO ENCODER | ENCODER PLATE |
| 10 | 5-120045 | SK ENCODER | ENCODER P.C. BOARD |
| 11 | 5-103533 | PICK-UP | PICK-UP |
| 12 | 5-103692 | FRENO CON MOZZO | BRAKE ASSEMBLY |
| 13 | 5-100172 | MOTORE AC 230V (VERS. AUTOFR.) | MOTOR 230V (BRAKE VERSION) |
| 13 | 5-100180 | MOTORE AC 115V (VERS. AUTOFR.) | MOTOR 115V (BRAKE VERSION) |
| 14 | 3-03052 | CINGHIA | BELT |
| 15 | 4-104598 | FLANGIA MOTORE | MOTOR FLANGE |
| 16 | 2-02008 | VTCEI 1/2F M8X40 | CIRC. SOCKET HEAD SCREW 1/2F M8X40 |
| 17 | 4-104591 | FLANGIA SUPPORTO MOTORE | MOTOR SUPPORT FLANGE |
| 18 | 421349 | DADO ES.A. M8 | AUTOLOCKING HEXAGON NUT M8 |
| 19 | 2-03369 | VATCCIC M4X8 | SCREW TAPPING HEAD CUTTING CIRC. CROSS M4X8 |
| 20 | 2-02805 | VTCEI M3X8 | CIRCULAR SOCKET HEAD SCREW M3X8 |
| 21 | 2-02922 | VSTEI P.PA. M5X6 | CSK SCREW SOCKET M5X6 |
| 22 | 2-03427 | VTE M6X50 | HEXAGON HEAD SCREW M6X50 |
| 23 | 2-00146 | DADO ES.N. M6 | NORMAL HEXAGON NUT M6 |
| 24 | 2-00679 | ROSETTA D.6,6X18X1,5 | WASHER D.6,6X18X1,5 |
| 25 | 2-03003 | VTCEI M5X20 | CIRC. SOCKET HEAD SCREW M5X20 |
| 26 | 2-71546 | ROSETTA D.5 | WASHER D.5 |
| 27 | 2-00713 | ROSETTA D.5,5X15X1,6 | WASHER D.5,5X15X1,6 |
| 28 | 2-00891 | VTCEI M5X10 | CIRCULAR SOCKET HEAD SCREW M5X10 |
| 29 | 4-106938 | SUPPORTO MOTORE | MOTOR SUPPORT |
| 30 | 2-03421 | VTCEI M8X110 | CIRC. SOCKET HEAD SCREW M8X110 |
| 31 | 2-00243 | SFERA 5/16" | SPHERE 5/16" |
| 32 | 2-03600 | VSTEI P.CP. M10X45 | CSK SCREW SOCKET M10X45 |
| 33 | 424993 | MOLLA D.10,2X23X1,25 | SPRING D.10,2X23X1,25 |
| 34 | 2-01019 | DADO ES.N.A. M10 | NORMAL AUTOLOCKING HEX. NUT M10 |
| 35 | 5-101561 | GHIERA DI BLOCCAGGIO RUOTA | WHEEL LOCKING HANDLE |
| 36 | 5-103200 | MOTORE AC 230V (VERS. STD) | MOTOR 230V (STD VERSION) |
| 36 | 5-103201 | MOTORE AC 115V (VERS. STD) | MOTOR 115V (STD VERSION) |
| 37 | 449319 | CAVO FLAT 8VIE L.1100mm | FLAT CABLE 8-WAY L.1100mm |

GRUPPO FRENO A PEDALE

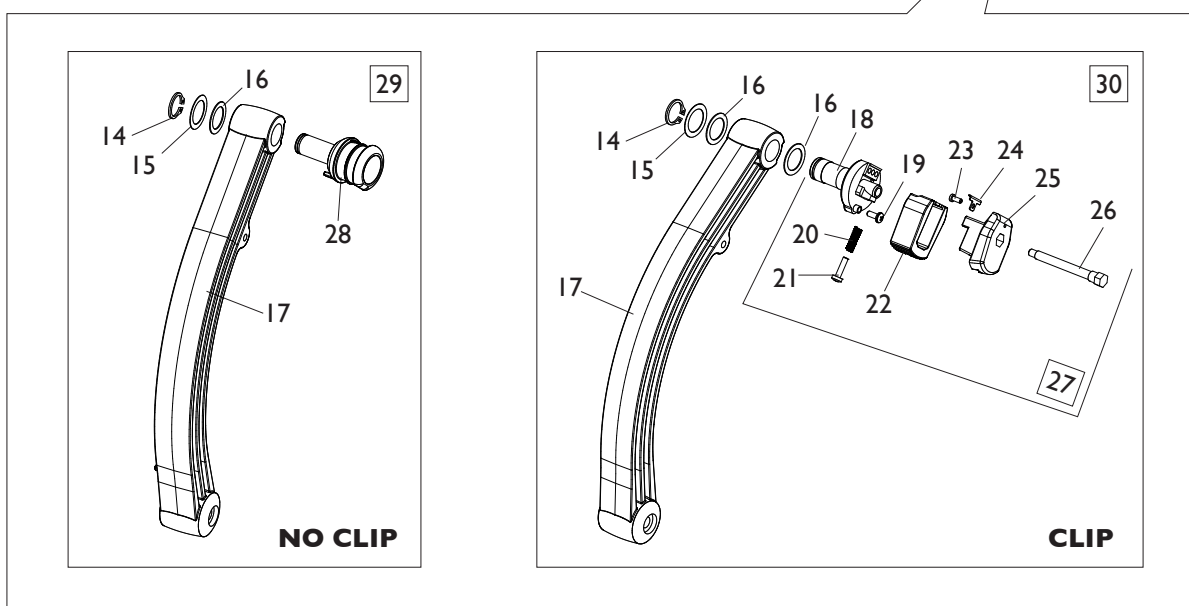
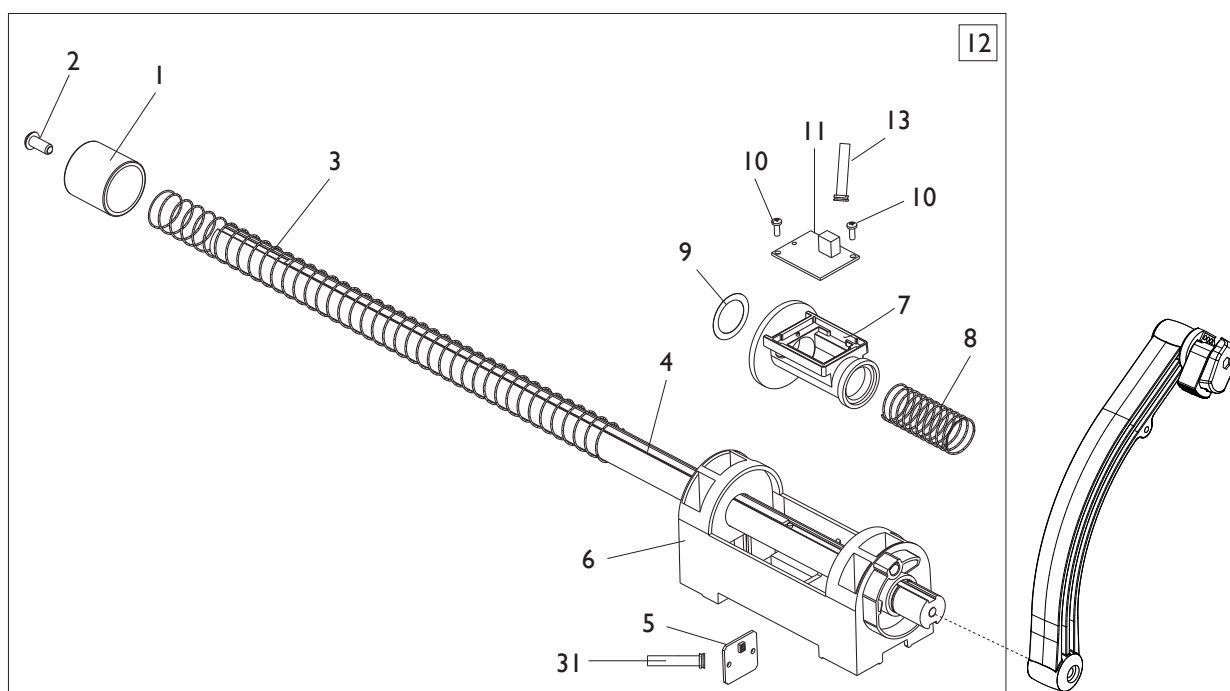
PEDAL BRAKE GROUP



[TORNA AL COMPLESSIVO](#)
[RETURNS TO OVERALL](#)

| Rif. Ref. | Codice Code | Descrizione | Description |
|--------------|----------------|-----------------------|--|
| 1 | 4-110623 | MOLLA RECUPERO GIOCO | SPRING |
| 2 | 4-102639 | PATTINO FRENO | BRAKE PAD |
| 3 | 4-103659 | MOLLA D.13,4X2,6X25 | SPRING D.13,4X2,6X25 |
| 4 | 4-103647 | PEDALE A BILANCERE DX | RIGHT PEDAL |
| 5 | 4-110038 | FULCRO | FULCRUM |
| 6 | 2-02210 | VTBEI M6X30 | ROUNDED HEAD SCREW SOCKET M6X30 |
| 7 | 4-103606 | LEVA SUPPORTO PATTINO | PAD SUPPORT |
| 8 | 2-91656 | VTABIC D.3,9X9,5 | SCREW TAPPING HEAD CUTTING CIRC. CROSS D.3,9X9,5 |
| 9 | 2-00021 | ANELLO D.8 | SEEGER D.8 |
| 10 | 4-103657 | ASTA FRENO D.12X490 | BRAKE BAR D.12X490 |
| 11 | 2-00042 | FORCELLA M6X12 | FORK M6X12 |
| 12 | 2-00044 | CLIP M6X12 | CLIP M6X12 |
| 13 | 4-103652 | LEVA PEDALE FRENO | LEVER |
| 14 | 2-00210 | RONDELLA D.5 | WASHER D.5 |
| 15 | 2-00713 | ROSETTA D.5,5X15X1,6 | WASHER D.5,5X15X1,6 |
| 16 | 2-71524 | DADO ES.A. M5 | AUTOLOCKING HEXAGON NUT M5 |
| 17 | 2-00157 | DADO ES. M10 | HEXAGON NUT M10 |

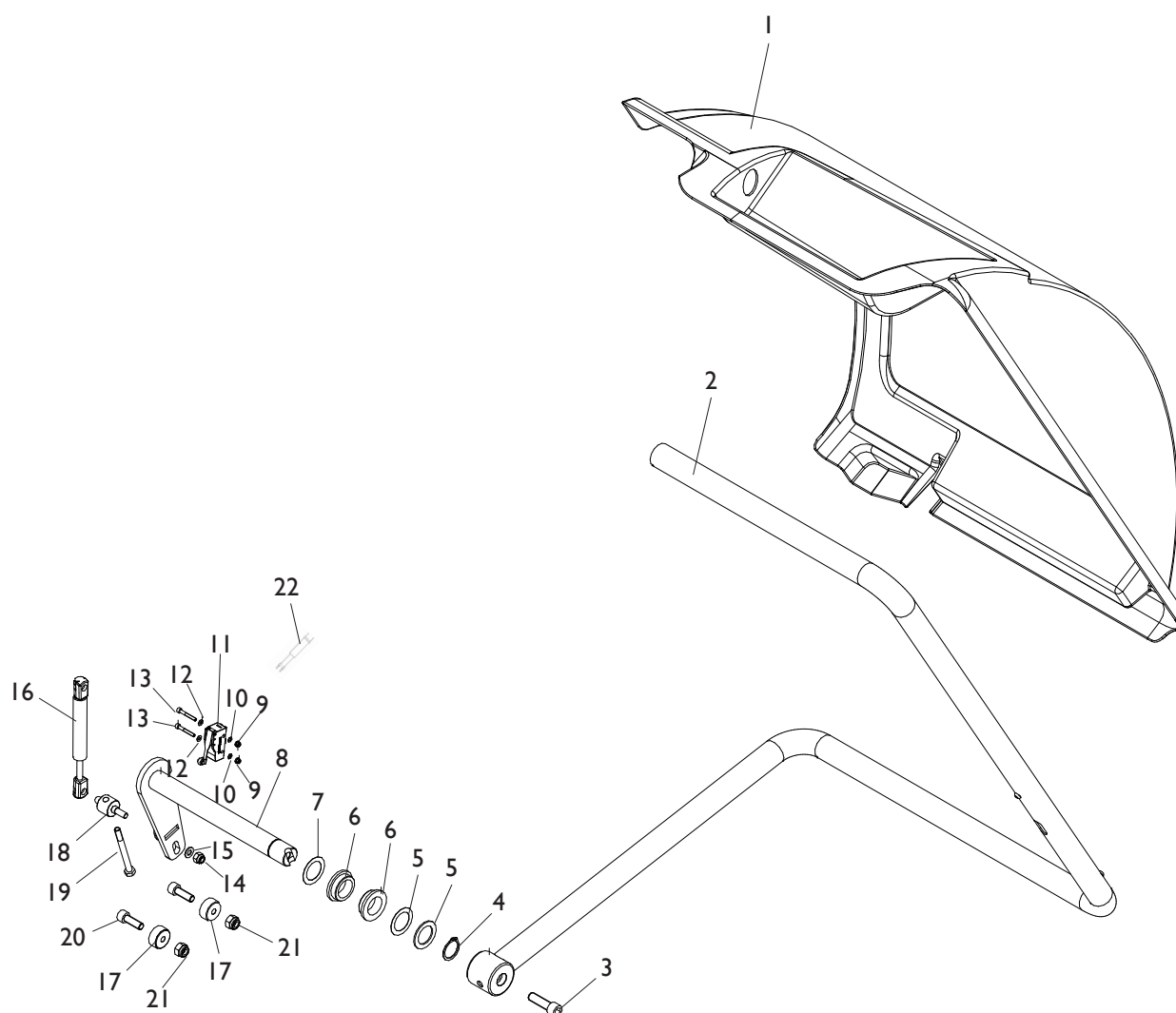
GRUPPO RILEVATORE INTERNO INTERNAL DETECTOR GROUP



[TORNA AL COMPLESSIVO](#)
[RETURNS TO OVERALL](#)

| Rif. Ref. | Codice Code | Descrizione | Description |
|--------------|----------------|---|--|
| 1 | 4-108594 | BUSSOLA FINECORSO MOLLA D.33,5X33,9 | BUSH STOP SPRING D.33,5X33,9 |
| 2 | 2-02174 | VTBEI M6X16 | ROUNDED HEAD SCREW SOCKET M6X16 |
| 3 | 4-108611 | MOLLA D.0,9X22,6X650 | SPRING D.0,9X22,6X650 |
| 4 | 5-103203 | ASTA+MAGN.+TARGH. (VERS. DIGITALE) | ROD ASSEMBLY (DIGITAL VERSION) |
| 4 | 5-104662 | ASTA+TARGH. (VERS. MANUALE) | ROD ASSEMBLY (MANUAL VERSION) |
| 5 | 5-103204 | SK ENCODER REFLEX (VERS. DIGITALE) | REFLEX P.C. BOARD (DIGITAL VERSION) |
| 6 | 4-108592 | SUPPORTO RILEVATORE | DETECTOR SUPPORT |
| 7 | 4-108799 | SUPPORTO CON ENCODER | SUPPORT WITH ENCODER |
| 8 | 4-108612 | MOLLA D.1,5X24,3X60 | SPRING D.1,5X24,3X60 |
| 9 | 4-103075 | RONDELLA D.20,2X28X0,1 | WASHER D.20,2X28X0,1 |
| 10 | 2-02071 | VATCCIC M.3X8 | SCREW HEAD CUTTING CIRCULAR CROSS M.3X8 |
| 11 | 5-103205 | SCHEDA MAGNETI | MAGNET P.C. BOARD |
| 12 | 5-100965 | RILEVATORE DIGITALE COMPLETO | DIGITAL DETECTOR ASSEMBLY |
| 12 | 5-104342 | RILEVATORE MANUALE COMPLETO | MANUAL DETECTOR ASSEMBLY |
| 13 | 4-109588 | FLAT 6VIE L.1100mm | FLAT CABLE 6 WAY L.1100mm |
| 14 | 2-00832 | ANELLO D.13 | SEEGER D.13 |
| 15 | 2-03063 | RONDELLA D.14X20X0,3 | WASHER D.14X20X0,3 |
| 16 | 450073 | RONDELLA D.13 | WASHER D.13 |
| 17 | 4-108606 | LEVA | LEVER |
| 18 | 4-103496 | TERMINALE PORTAPESI FISSO | FIXED END WEIGHT HOLDER |
| 19 | 463632 | VTBIC FLANGIATA D.3X8 | HEAD SCREW CROSS CUT D.3X8 |
| 20 | 407593 | MOLLA D.4,5X0,5X17 | SPRING D.4,5X0,5X17 |
| 21 | 2-02072 | VTCIC M3X12 | HEAD SCREW CROSS CIRCULAR CONE M3X12 |
| 22 | 449342 | PULSANTE ESPULSIONE PESO | WEIGHT BUTTON |
| 23 | 2-02203 | VATCCIC D.2,5X6 | SCREW HEAD CUTTING CIRC. CROSS M.2,5X6 |
| 24 | 4-101272 | LAMIERA TRATT. PESO | PLATE |
| 25 | 4-104050 | TERMINALE PORTAPESI MOBILE | MOBILE END WEIGHT HOLDERS |
| 26 | 4-104670 | PERNO D.4,9X49,8 | PIN D.4,9X49,8 |
| 27 | 5-101462 | TERMINALE PORTAPESI CLIP | CLIP TERMINAL WEIGHT HOLDERS |
| 28 | 4-119351 | TERMINALE PORTAPESI NO CLIP | NO CLIP TERMINAL WEIGHT HOLDERS |
| 29 | 5-106514 | LEVA CON TERM. PORTAP. NO CLIP | NO CLIP LEVER END WEIGHT HOLDERS |
| 30 | 5-103440 | LEVA CON TERMINALE PORTAP. CLIP | CLIP LEVER END WEIGHT HOLDERS |
| 31 | 4-109587 | FLAT 4VIE L. 900mm | FLAT CABLE 4 WAY L.900mm |

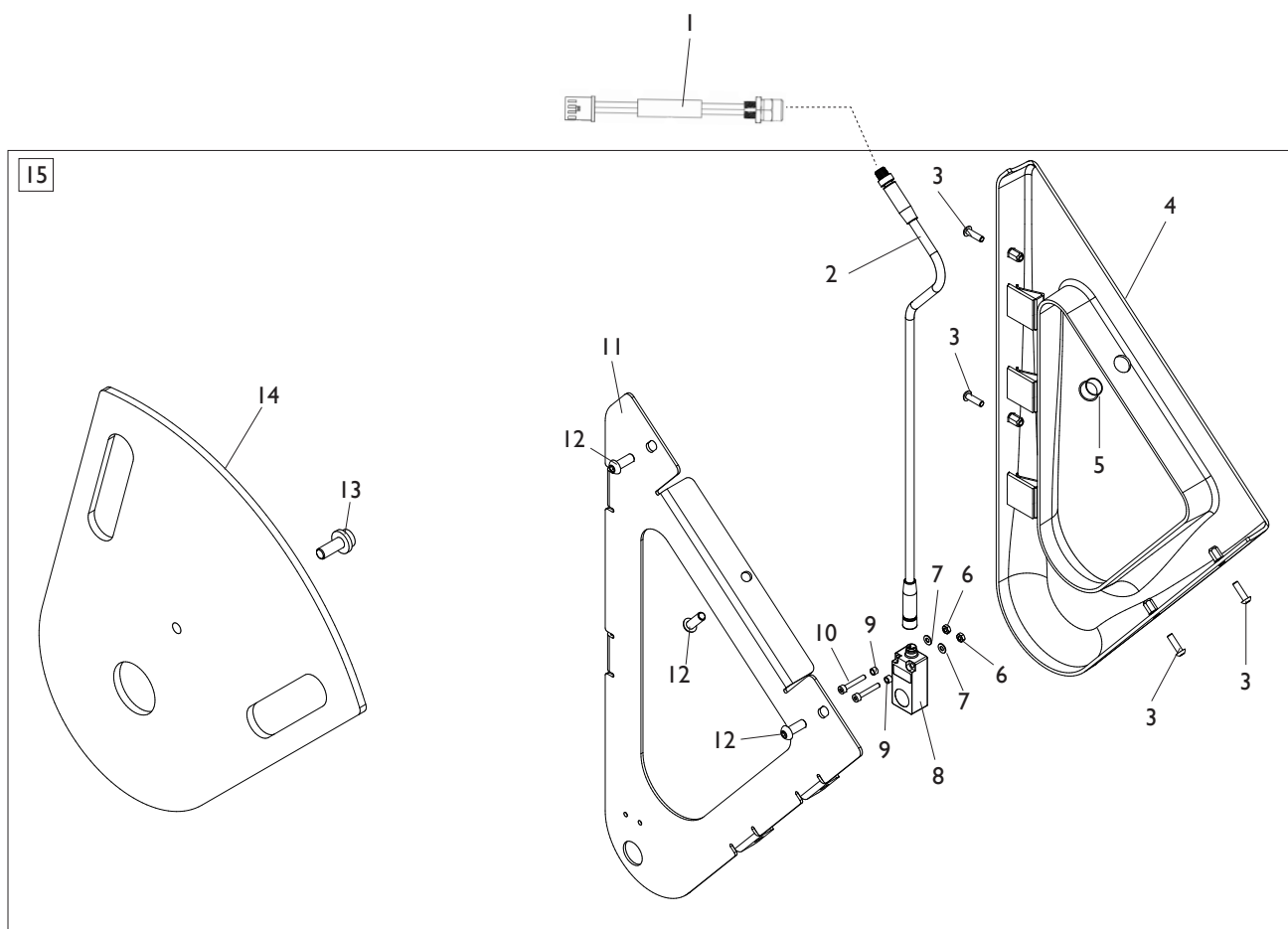
GRUPPO PROTEZIONE RUOTA WHEEL PROTECTION GROUP



[TORNA AL COMPLESSIVO](#)
[RETURNS TO OVERALL](#)

| Rif. Ref. | Codice Code | Descrizione | Description |
|--------------|----------------|--------------------------|------------------------------------|
| 1 | 4-105459/90 | PROTEZIONE RUOTA 44" | WHEEL PROTECTION 44" |
| 2 | 5-106492 | TUBO SUPPORTO PROTEZIONE | PROTECTION SUPPORT |
| 3 | 2-03001 | VTCEI M12X40 | CIRC. SOCKET HEAD SCREW M12X40 |
| 4 | 2-01110 | SEEGER D.28 | SEEGER D.28 |
| 5 | 436721 | RONDELLA D.29X42X0,5 | WASHER D.29X42X0,5 |
| 6 | 433637 | BOCCOLA | BUSH |
| 7 | 4-109006 | RONDELLA D.28,5X42X2 | WASHER D.28,5X42X2 |
| 8 | 4-119340 | PERNO PROTEZIONE | PROTECTION PIN |
| 9 | 2-02883 | DADOES.B.A. M4 | LOW AUTOLOCKING HEX. NUT M4 |
| 10 | 2-00196 | RONDELLA D.4 | WASHER D.4 |
| 11 | 4-109005 | MICRO I6A | MICRO I6A |
| 12 | 2-00209 | RONDELLA D.4 | WASHER D.4 |
| 13 | 2-02078 | VTCEI 1/2F M4X30 | CIRC. SOCKET HEAD SCREW 1/2F M4X30 |
| 14 | 2-01020 | DADO ES.A. M8 | AUTOLOCKING HEXAGON NUT M8 |
| 15 | 2-00212 | RONDELLA D.8 | WASHER D.8 |
| 16 | 4-119343 | MOLLA GAS | GAS SPRING |
| 17 | 4-118425 | TAMPONE D.30X13 | PAD D.30X13 |
| 18 | 4-119339 | SNODO M8 | JOINT M8 |
| 19 | 2-00419 | VTE 1/2F M8X65 | HEXAGON HEAD SCREW 1/2F M8X65 |
| 20 | 2-00330 | VTCEI M10X30 | HEXAGON SOCKET HEAD SCREW M10X30 |
| 21 | 2-01019 | DADO ES.A. M10 | AUTOLOCKING HEXAGON NUT M10 |
| 22 | 4-119617 | CAVO 2X0,25 L. 900mm | CABLE 2X0,25 L.900mm |

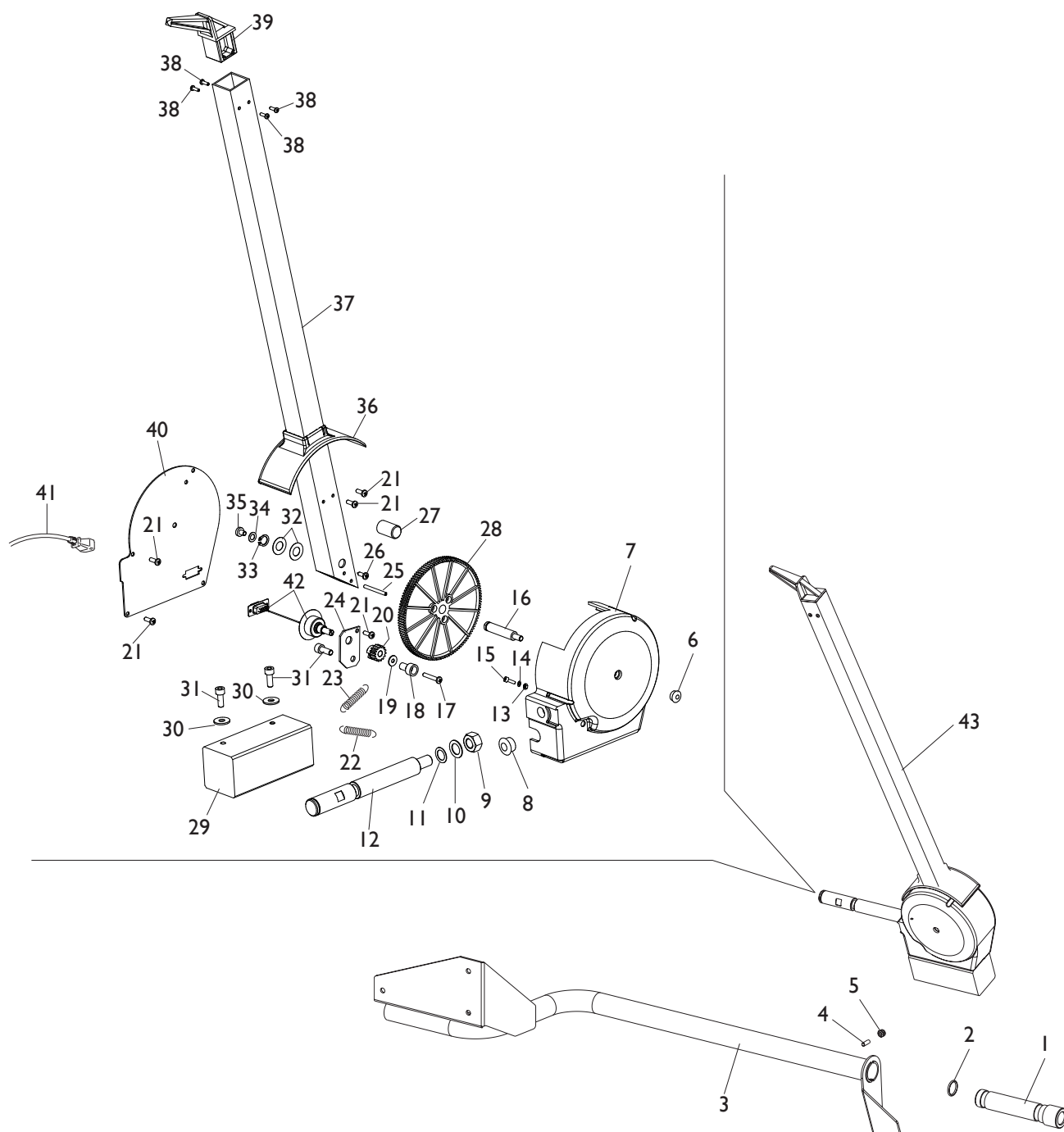
GRUPPO SONAR SONAR GROUP



[TORNA AL COMPLESSIVO](#)
[RETURNS TO OVERALL](#)

| Rif. Ref. | Codice Code | Descrizione | Description |
|--------------|----------------|---------------------------|----------------------------------|
| 1 | 4-118394 | CAVO SONAR-SK ALIM. | SONAR CABLE |
| 2 | 4-118134 | CAVO 4X0,35 M8 M-F | CABLE 4X0,35 M8 |
| 3 | 2-03494 | VTBEI M4X14 | ROUNDED HEAD SCREW SOCKET M4X14 |
| 4 | 4-117868 | CARTER SENSORE | SENSOR COVER |
| 5 | 435957 | TAPPO NERO D.12,7 | BLACK CAP D.12,7 |
| 6 | 2-71510 | DADO ES.N. M3 | NORMAL HEXAGON NUT M3 |
| 7 | 2-00208 | RONDELLA D.3 | WASHER D.3 |
| 8 | 4-117867 | SONAR | SONAR |
| 9 | 3-02948 | DISTANZIALE D.3,2X4,8X3,2 | SPACER D.3,2X4,8X3,2 |
| 10 | 2-01150 | VTCEI M3X20 | CIRCULAR SOCKET HEAD SCREW M3X20 |
| 11 | 5-120478 | LAMIERA SUPPORTO SENSORE | SENSOR SUPPORT |
| 12 | 2-02155 | VTBEI M6X16 | ROUNDED HEAD SCREW SOCKET M6X16 |
| 13 | 457693 | VTCEI CON COLLARE M8X20 | CIRCULAR SOCKET HEAD SCREW M8X20 |
| 14 | 4-118355 | CALIBRATORE | CALIBRATOR |
| 15 | 8-21100232 | GRUPPO SONAR | SONAR GROUP |

GRUPPO RILEVATORE ESTERNO EXTERNAL DETECTOR GROUP

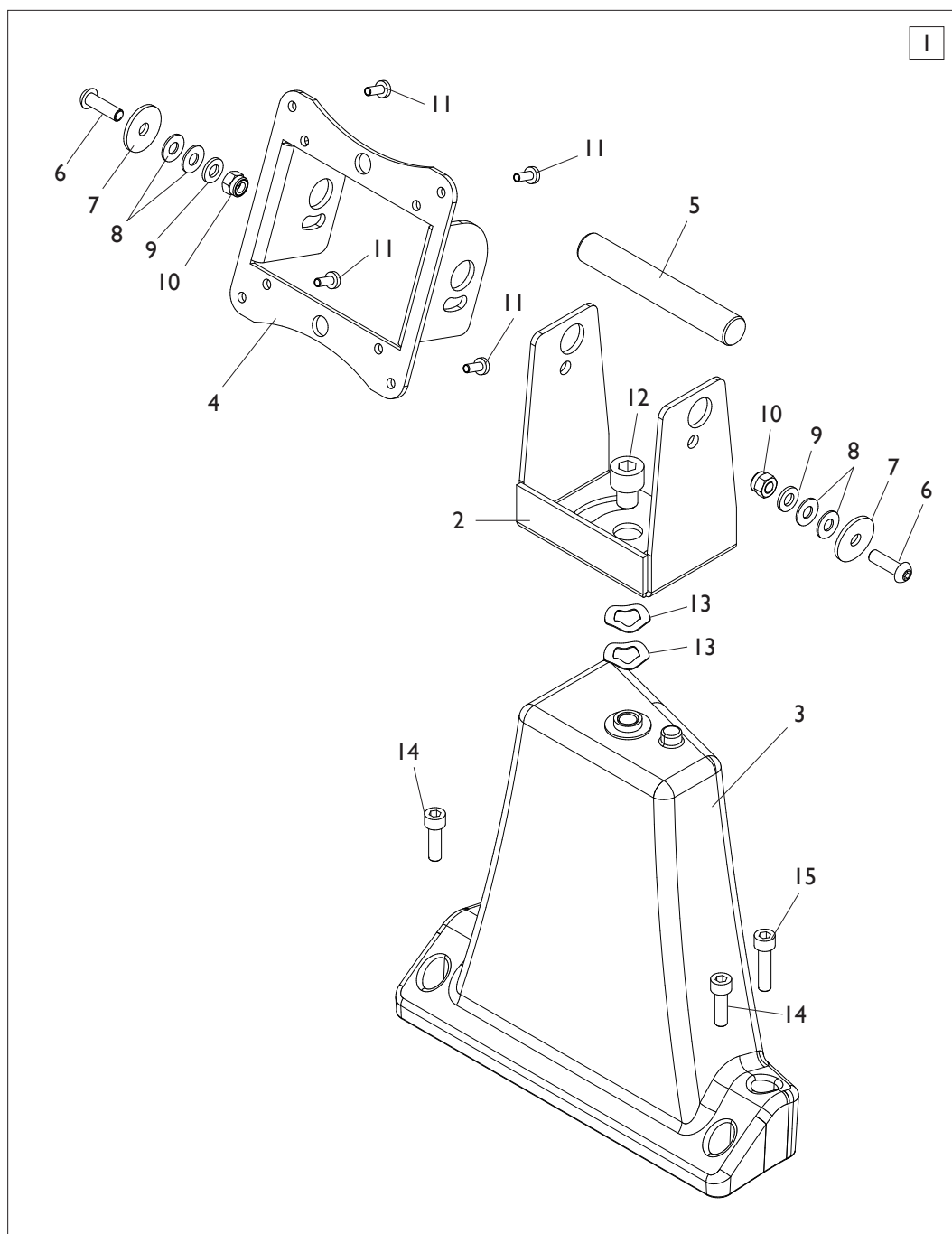


[TORNA AL COMPLESSIVO](#)
[RETURNS TO OVERALL](#)

| Rif. Ref. | Codice Code | Descrizione | Description |
|--------------|----------------|-----------------------------------|--|
| 1 | 4-104994 | BOCCOLA DISTANZIALE TASTATORE | SPACER |
| 2 | 421590 | GUARNIZIONE OR D.20,24X2,62 | O-RING D.20,24X2,62 |
| 2 | 430604 | GUARNIZIONE OR D.21,95X1,78 | O-RING D.21,95X1,78 |
| 3 | 4-104813 | SUPPORTO RILEVATORE | DETECTOR SUPPORT |
| 4 | 2-80133 | VSTEI M6X10 | CSK SCREW SOCKET M6X10 |
| 5 | 2-01979 | DADO ES.A. M6 | AUTOLOCKING HEXAGON NUT M6 |
| 6 | 454472 | TAPPO TONDO D.11,1 | CAP D.11,1 |
| 7 | 454457 | CORPO RILEVATORE | DETECTOR BODY |
| 8 | 4-101337 | TAPPO TONDO D.15,9 | CAP D.15,9 |
| 9 | 2-02313 | DADO ES M12 | HEXAGON NUT M12 |
| 10 | 2-71545 | ROSETTA D.12 | WASHER D.12 |
| 11 | 309197 | RONDELLA D.12X25X0,6 | WASHER D.12X25X0,6 |
| 12 | 353575 | PERNO ROTAZIONE | ROTATING PIN |
| 13 | 2-00142 | DADO ES. M3 | HEXAGON NUT M3 |
| 14 | 2-71547 | ROSETTA D.3 | WASHER D.3 |
| 15 | 2-00921 | VTCEI M3X10 | CIRCULAR SOCKET HEAD SCREW M3X10 |
| 16 | 353574 | PERNO FULCRO BRACCIO | FULCRUM PIN |
| 17 | 2-02231 | VATCCIC M.4X25 | SCREW TAPPING HEAD CIRCULAR CROSS M.4X25 |
| 18 | 353580 | PERNO DISTANZIALE M/F D.13X20 | SPACER PIN D.13X20 |
| 19 | 2-91679 | ROSETTA D.4X12 | WASHER D.4X12 |
| 20 | 449326 | PIGNONE | PINION |
| 21 | 2-02095 | VATCCIC M.4X12 | SCREW TAPPING HEAD CIRCULAR CROSS M.4X12 |
| 22 | 455120 | MOLLA TRAZIONE D.10X1,2X34,6 | SPRING D.10X1,2X34,6 |
| 23 | 454239 | MOLLA TRAZIONE D.9X0,8X31,4 | SPRING D.9X0,8X31,4 |
| 24 | 353573 | LAMIERA FISSAGGIO POTENZIOMETRO | POTENTIOMETER PLATE |
| 25 | 2-01028 | SPINA D.3,5X35 | PLUG D.3,5X35 |
| 26 | 2-01973 | VATBIC M.4,2X19 | ROUNDED HEAD SCREW M.4,2X19 |
| 27 | 353581 | FERMO ROTAZIONE | ROTATION STOP |
| 28 | 453579 | INGRANAGGIO Z.116 | GEAR Z.116 |
| 29 | 353577 | CONTRAPPESO | POIND |
| 30 | 2-00679 | ROSETTA D.6,6X18X1,5 | WASHER D.6,6X18X1,5 |
| 31 | 2-00309 | VTCEI M6X16 | CIRCULAR SOCKET HEAD SCREW M6X16 |
| 32 | 310842 | RONDELLA D.10,25X20X0,3 | WASHER D.10,25X20X0,3 |
| 33 | 2-00023 | ANELLO D.10 | SEEGER D.10 |
| 34 | 2-02246 | RONDELLA ELASTICA D.6,4X11 | ELASTIC WASHER D.6,4X11 |
| 35 | 2-00738 | VTCIC M5X7 | HEAD SCREW CROSS CIRCULAR CONE M5X7 |
| 36 | 454458 | PROTEZIONE SCATOLA | COVER PROTECTION |
| 37 | 353559 | BRACCIO RILEVATORE | DETECTOR ARM |
| 38 | 2-02257 | VATCCIC M.3X10 | SCREW HEAD CUTTING CIRCULAR CROSS M.3X10 |
| 39 | 453572 | TASTATORE | DETECTOR |
| 40 | 4-106072 | CARTER SCATOLA RILEVATORE ESTERNO | EXTERNAL DETECTOR COVER |
| 41 | 4-106012 | CAVO 9X0,5 L.2000mm 9PM-9PM | CABLE 9X0,5 L.2000mm |
| 42 | 5-120837 | POTENZ. CON CAVO | POTENT.WITH CABLE |
| 43 | 257670 | RILEVATORE ESTERNO COMPLETO | EXTERNAL DETECTOR ASSEMBLY |

GRUPPO SUPPORTO MONITOR EM9280

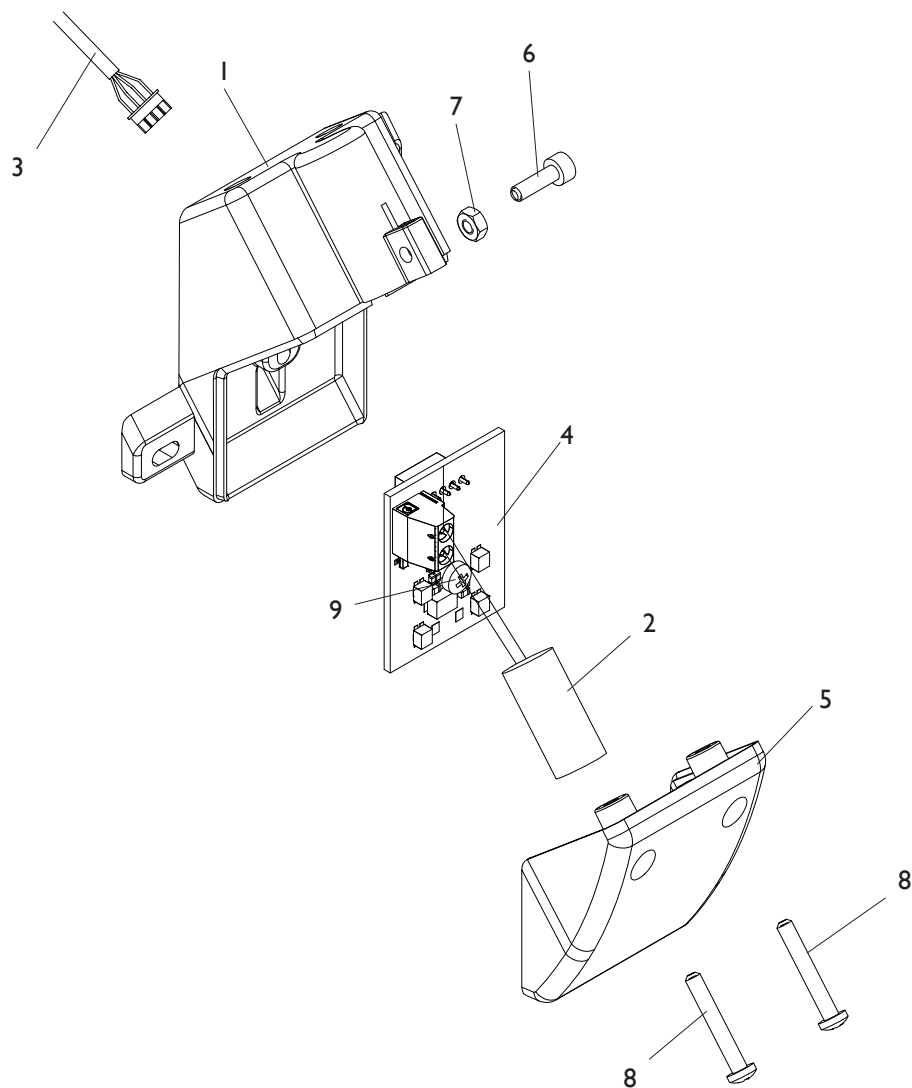
EM9280 MONITOR SUPPORT GROUP



[TORNA AL COMPLESSIVO](#)
[RETURNS TO OVERALL](#)

| Rif. Ref. | Codice Code | Descrizione | Description |
|--------------|----------------|---------------------------|---|
| 1 | 5-106540 | SUPPORTO MONITOR COMPLETO | MONITOR SUPPORT ASSEMBLY |
| 2 | 4-105362/90 | LAMIERA SUPPORTO LCD | LCD PLATE |
| 3 | 4-108779/90 | SUPPORTO LCD | LCD SUPPORT |
| 4 | 4-104381/90 | FLANGIA ATTACCO LCD | LCD FLANGE |
| 5 | 4-104380 | PERNO D.15 | PIN D.15 |
| 6 | 2-02794 | VTBEI M6X20 | ROUNDED HEAD SCREW SOCKET M6X20 |
| 7 | 2-80079 | ROSETTA D.6X24 | WASHER D.6X24 |
| 8 | 3-01756 | RONDELLA D.6,2X14X1 | WASHER D.6,2X14X1 |
| 9 | 2-00211 | RONDELLA D.6 | WASHER D.6 |
| 10 | 2-01257 | DADO ES.A. M6 | AUTOLOCKING HEXAGON NUT M6 |
| 11 | 2-00605 | VTCIC M4X10 | SCREW TAPPING HEAD CUTTING CIRC. CROSS M.4X10 |
| 12 | 2-91720 | VTCEI M10X12 | CIRCULAR SOCKET HEAD SCREW M10X12 |
| 13 | 414528 | ANELLO ELASTICO | ELASTIC WASHER |
| 14 | 2-00310 | VTCEI M6X20 | CIRCULAR SOCKET HEAD SCREW M6X20 |
| 15 | 2-00312 | VTCEI M6X25 | CIRCULAR SOCKET HEAD SCREW M6X25 |

GRUPPO ILLUMINATORE ILLUMINATOR GROUP

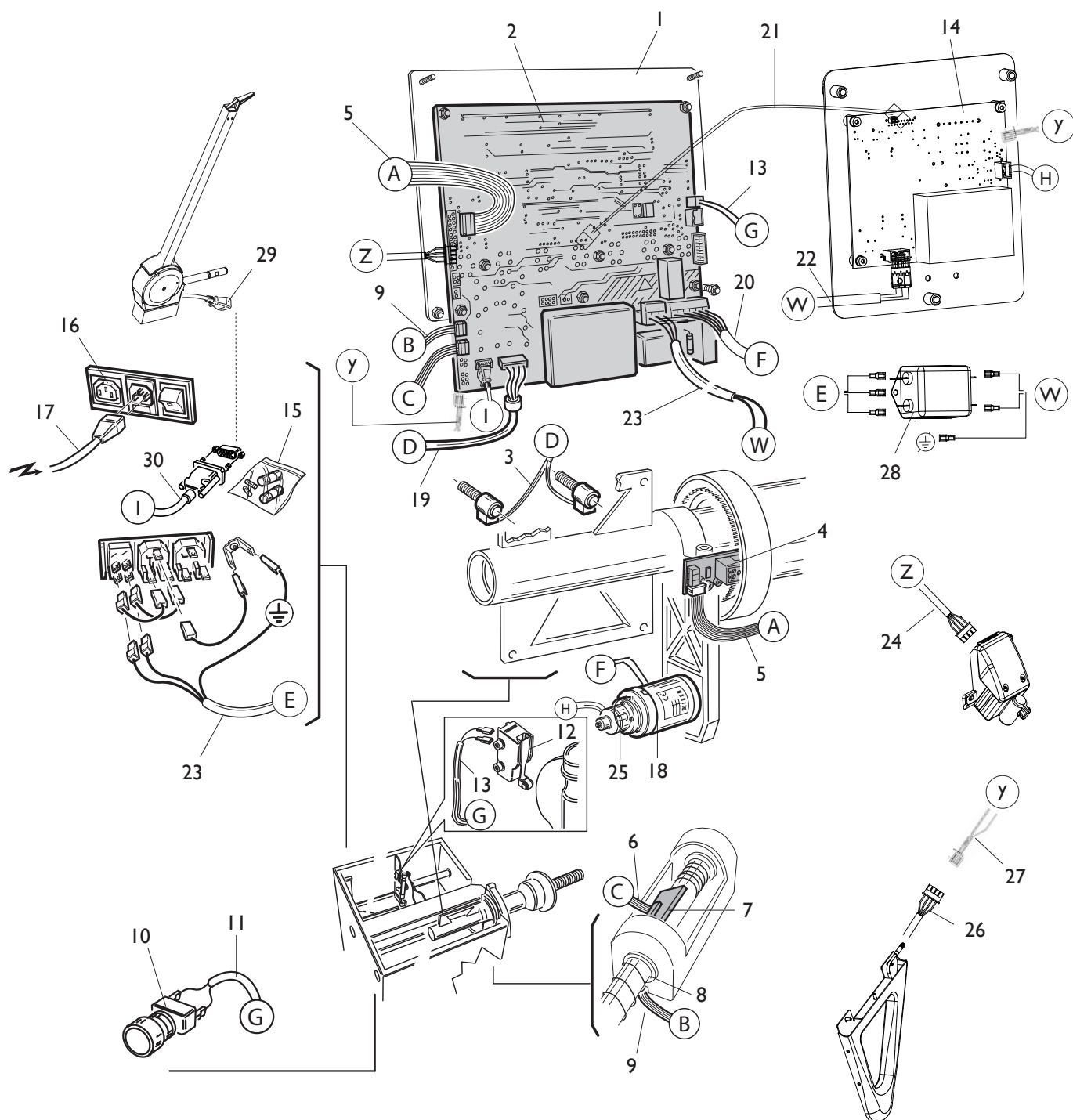


[TORNA AL COMPLESSIVO](#)
[RETURNS TO OVERALL](#)

| Rif. Ref. | Codice Code | Descrizione | Description |
|--------------|----------------|------------------------|---|
| 1 | 4-113648 | SUPPORTO ILLUMINATORE | ILLUMINATOR SUPPORT |
| 2 | 3-02994 | LASER PUNTAMENTO | LASER |
| 3 | 4-113078 | CAVO 4X0,25 L.2000mm | CABLE 4X0,25 L.2000mm |
| 4 | 4-113647 | SK ILLUMINATORE | ILLUMINATOR P.C. BOARD |
| 5 | 4-113649 | COPERCHIO ILLUMINATORE | ILLUMINATOR COVER |
| 6 | 2-00284 | VTCEI M3X6 | CIRCULAR SOCKET HEAD SCREW M3X6 |
| 7 | 2-00142 | DADO ES. M3 | HEXAGON NUT M3 |
| 8 | 2-02279 | VTABIC M3X20 | SCREW TAPPING HEAD CUTTING CIRC. CROSS D.3X20 |
| 9 | 2-91682 | VTCIC M3X8 | SCREW TAPPING HEAD CUTTING CIRC. CROSS M.3X8 |

CABLAGGI ELETTRICI EM9250 Compact-Line

EM9250 Compact-Line ELECTRICAL WIRING

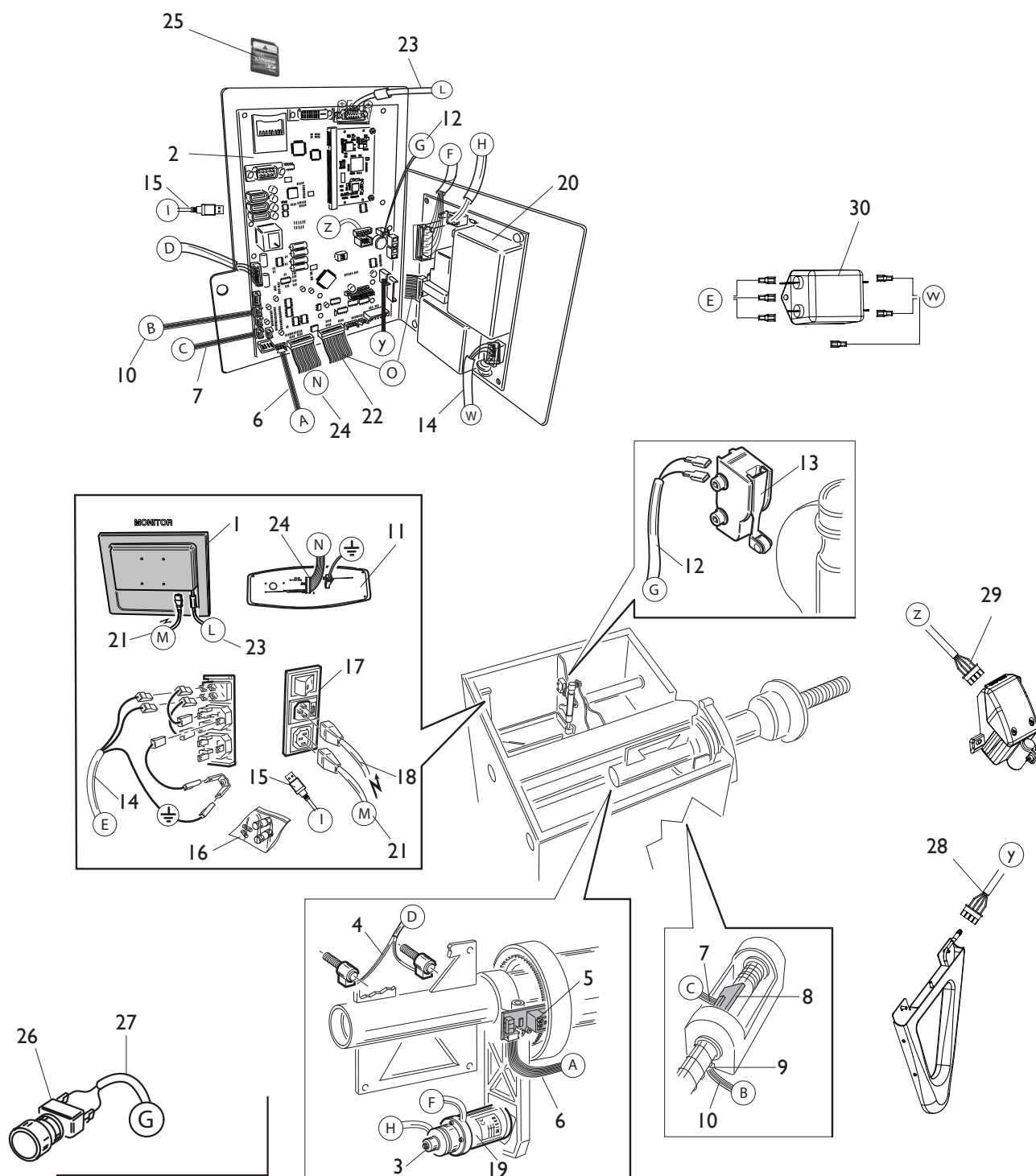


TORNA AL COMPLESSIVO
RETURNS TO OVERALL

| Rif. Ref. | Codice Code | Descrizione | Description |
|--------------|----------------|--|--|
| 1 | 4-133337 | PANNELLO DISPLAY | DISPLAY PANEL |
| 2 | 5-121448 | SCHEDA CPU | CPU P.C. BOARD |
| 3 | 5-103533 | PICK-UP | PICK-UP |
| 4 | 5-120045 | SK ENCODER | ENCODER P.C. BOARD |
| 5 | 449319 | FLAT 8VIE L.1100mm (ENC. RUOTA) | FLAT CABLE 8WAY L.1100mm (ENCODER) |
| 6 | 4-109588 | FLAT 6VIE L.1100mm (DISTANZA RIL. INT.) | FLAT CABLE 6WAY L.1100mm (DISTANCE) |
| 7 | 5-103205 | SCHEDA MAGNETI | MAGNET P.C. BOARD |
| 8 | 5-103204 | SK ENC. REFLEX | REFLEX ENCODER P.C. BOARD |
| 9 | 4-109587 | FLAT 4VIE L. 900mm (DIAMETRO RIL. INT.) | FLAT CABLE 4WAY L.900mm (DIAMETER) |
| 10 | 256213 | INTERRUTTORE DI START | START SWITCH |
| 11 | 4-116015 | CAVO 2X0,25 L.1320mm | CABLE 2X0,25 L.1320mm |
| 12 | 4-109005 | MICRO 16A | MICRO 16A |
| 13 | 4-119617 | CAVO 2X0,25 L. 900mm (MICRO) | CABLE 2X0,25 L.900mm (MICRO) |
| 14 | 5-120592 | SK ALIMENTATORE PEAL MINI | PEAL MINI SUPPLY P.C. BOARD |
| 15 | 5-120990 | KIT FUSIBILI 3,15AT 230V | FUSE KIT 3,15AT 230V |
| 15 | 5-120988 | KIT FUSIBILI 5AT 115V | FUSE KIT 5AT 115V |
| 16 | 3-02775 | MODULO POLYSNAP+PRESA | POLYSNAP MODULE + PLUG |
| 17 | 3-01943 | CAVO RETE 230V | SUPPLY CABLE 230V |
| 17 | 4-107853 | CAVO RETE 115V | SUPPLY CABLE 115V |
| 18 | 5-100172 | MOTORE AC 230V (VERS. AUTOFR.) | MOTOR 230V (BRAKE VERSION) |
| 18 | 5-100180 | MOTORE AC 115V (VERS. AUTOFR.) | MOTOR 115V (BRAKE VERSION) |
| 18 | 5-103200 | MOTORE AC 230V (VERS. STD) | MOTOR 230V (STD VERSION) |
| 18 | 5-103201 | MOTORE AC 115V (VERS. STD) | MOTOR 115V (STD VERSION) |
| 21 | 4-119379 | CAVO 2X0,25 L.900mm (PEAL-MBE) | CABLE 2X0,25 L.900mm (PEAL-MBE) |
| 22 | 4-119377 | CAVO 3X1,5 L. 250mm (ALIM. PEAL) | CABLE 3X1,5 L. 250mm (PEAL SUPPLY) |
| 23 | 4-108093 | CAVO 3X1,5 L. 700mm (ALIM. MBE) | CABLE 3X1,5 L. 700mm (MBE SUPPLY) |
| 24 | 4-113078 | CAVO 4X0,25 L.2000mm (LASER) | CABLE 4X0,25 L.2000mm (LASER) |
| 25 | 5-103692 | FRENO CON MOZZO | BRAKE ASSEMBLY |
| 26 | 4-118394 | CAVO SONAR | SONAR CABLE |
| 27 | 4-119375 | CAVO PROLUNGA SONAR | SONAR EXTENTION CABLE |
| 28 | 448914 | FILTRO | FILTER |
| 29 | 4-106012 | CAVO PROLUNGA | EXTENTION CABLE |
| 30 | 453698 | FLAT 3P L.650mm (RIL. ESTERNO) | FLAT CABLE 3WAY L.650mm (EXT. DETEC.) |

CABLAGGI ELETTRICI EM9280 Compact-Line

EM9280 Compact-Line ELECTRICAL WIRING



[TORNA AL COMPLESSIVO](#)
[RETURNS TO OVERALL](#)

| Rif. Ref. | Codice Code | Descrizione | Description |
|--------------|----------------|---|--|
| 1 | 3-01952 | MONITOR LCD 19" | LCD MONITOR 19" |
| 2 | 5-121446 | SCHEDA CPU | CPU P.C. BOARD |
| 3 | 5-103692 | FRENO CON MOZZO | BRAKE ASSEMBLY |
| 4 | 5-103533 | PICK-UP | PICK-UP |
| 5 | 5-120045 | SK ENCODER | ENCODER P.C. BOARD |
| 6 | 449319 | FLAT 8 VIE L.1100mm (ENC. RUOTA) | FLAT CABLE 8 WAY L.1100mm (ENCODER) |
| 7 | 4-109588 | FLAT 6VIE L.1100mm | FLAT CABLE 6 WAY L.1100mm |
| 8 | 5-103205 | SCHEDA MAGNETI | MAGNET P.C. BOARD |
| 9 | 5-103204 | SK ENCODER REFLEX | REFLEX ENCODER P.C. BOARD |
| 10 | 4-109587 | FLAT 4 VIE L. 900mm (DIAMETRO RIL. INT.) | FLAT CABLE 4 WAY L.900mm (DIAMETER) |
| 11 | 5-100030 | TASTIERA | KEYBOARD |
| 12 | 4-119617 | CAVO 2X0,25 L. 900mm (MICRO) | CABLE 2X0,25 L.900mm (MICRO) |
| 13 | 4-109005 | MICRO 16A | MICRO 16A |
| 14 | 4-108093 | CAVO 3X1,5 L. 700mm (ALIM. PEAL) | CABLE 3X1,5 L. 700mm (PEAL SUPPLY) |
| 15 | 4-113407 | CAVO PROLUNGA USB | CABLE USB EXTENSION |
| 16 | 5-120990 | KIT FUSIBILI 3,15AT 230V | FUSE KIT 3,15AT 230V |
| 16 | 5-120988 | KIT FUSIBILI 5AT 115V | FUSE KIT 5AT 115V |
| 17 | 3-02775 | MODULO POLY SNAP+PRESA | POLY SNAP MODULE+PLUG |
| 18 | 3-01943 | CAVO RETE 230V | SUPPLY CABLE 230V |
| 18 | 4-107853 | CAVO RETE 115V | SUPPLY CABLE 115V |
| 19 | 5-100172 | MOTORE AC 230V (VERS. AUTOFR.) | MOTOR 230V (BRAKE VERSION) |
| 19 | 5-100180 | MOTORE AC 115V (VERS. AUTOFR.) | MOTOR 115V (BRAKE VERSION) |
| 20 | 5-100117 | SCHEDA ALIMENTATORE (PEAL) | SUPPLY P.C. BOARD (PEAL) |
| 21 | 3-01942 | CAVO ALIMENTAZIONE MONITOR | MONITOR SUPPLY CALBE |
| 22 | 4-109502 | FLAT 18 VIE L. 250mm (PEAL-MBU) | FLAT CABLE 18 WAY L.250mm (PEAL-MBU) |
| 23 | 4-106133 | CAVO SCHERMATO 15x0,34 L.1800mm | CABLE 15X0,34 L.1800mm |
| 24 | 4-104684 | FLAT 16 VIE L.1400mm (TASTIERA) | FLAT CABLE 16 WAY L.1400mm (KEYBOARD) |
| 25 | 5-121447 | SD EM9280 | SD EM9280 |
| 26 | 256213 | INTERRUTTORE DI START | START SWITCH |
| 27 | 4-116015 | CAVO 2X0,25 L. 1320mm | CABLE 2X0,25 L.1320mm |
| 28 | 4-118394 | CAVO SONAR | SONAR CABLE |
| 29 | 4-113078 | CAVO 4X0,25 L.2000mm (LASER) | CABLE 4X0,25 L.2000mm (LASER) |
| 30 | 448914 | FILTRO | FILTER |



Via per Carpi, n°9 - 42015 Correggio (RE) ITALY
Tel. ++39 0522 639111 - Fax ++39 0522 639150
www.corgchi.com - info@corgchi.com

Code 4-119444

Production date : 10 / 2015

Il disegno è realizzato con tutti i particolari ma solo quelli codificati sono forniti come ricambi. L'Azienda si riserva la facoltà di apportare modifiche senza preavviso.

The drawing shows all parts but only the coded parts are supplied as spares. The Company reserves the right to make modifications without prior notice.