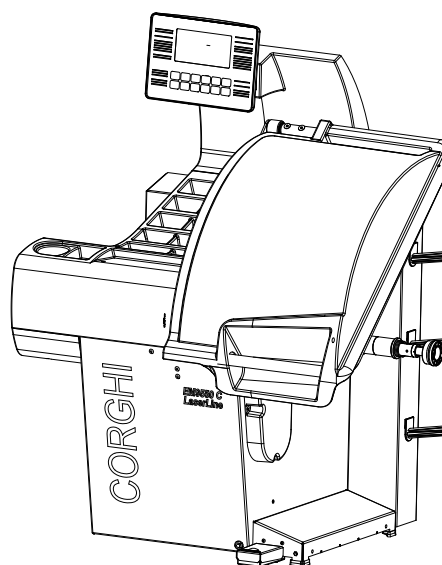
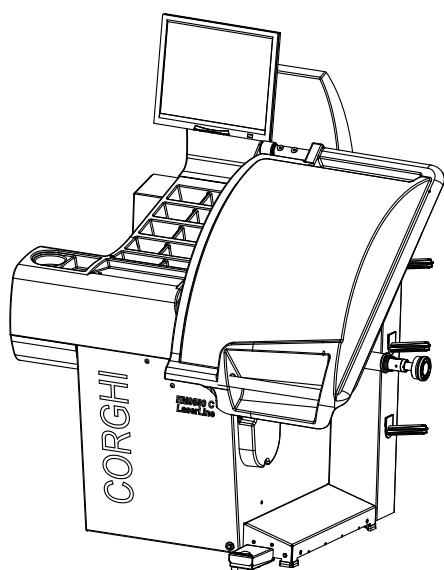
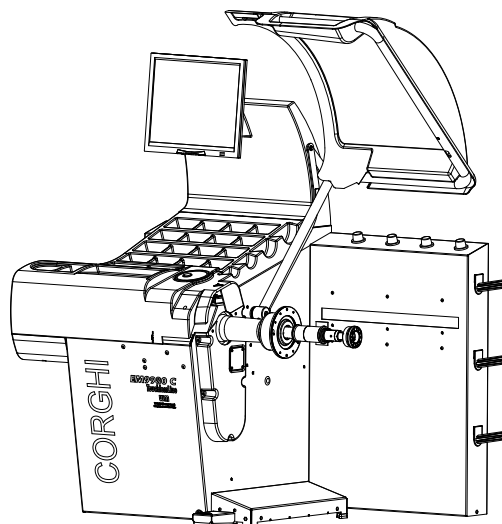
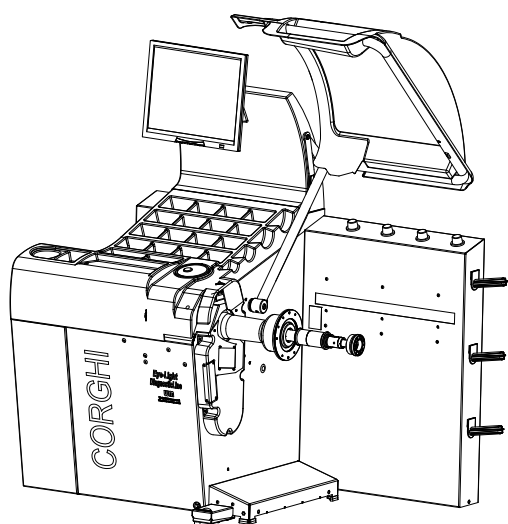


EYE-LIGHT - EM9980 - EM9580 - EM9550

Pezzi di ricambio / Spare parts list

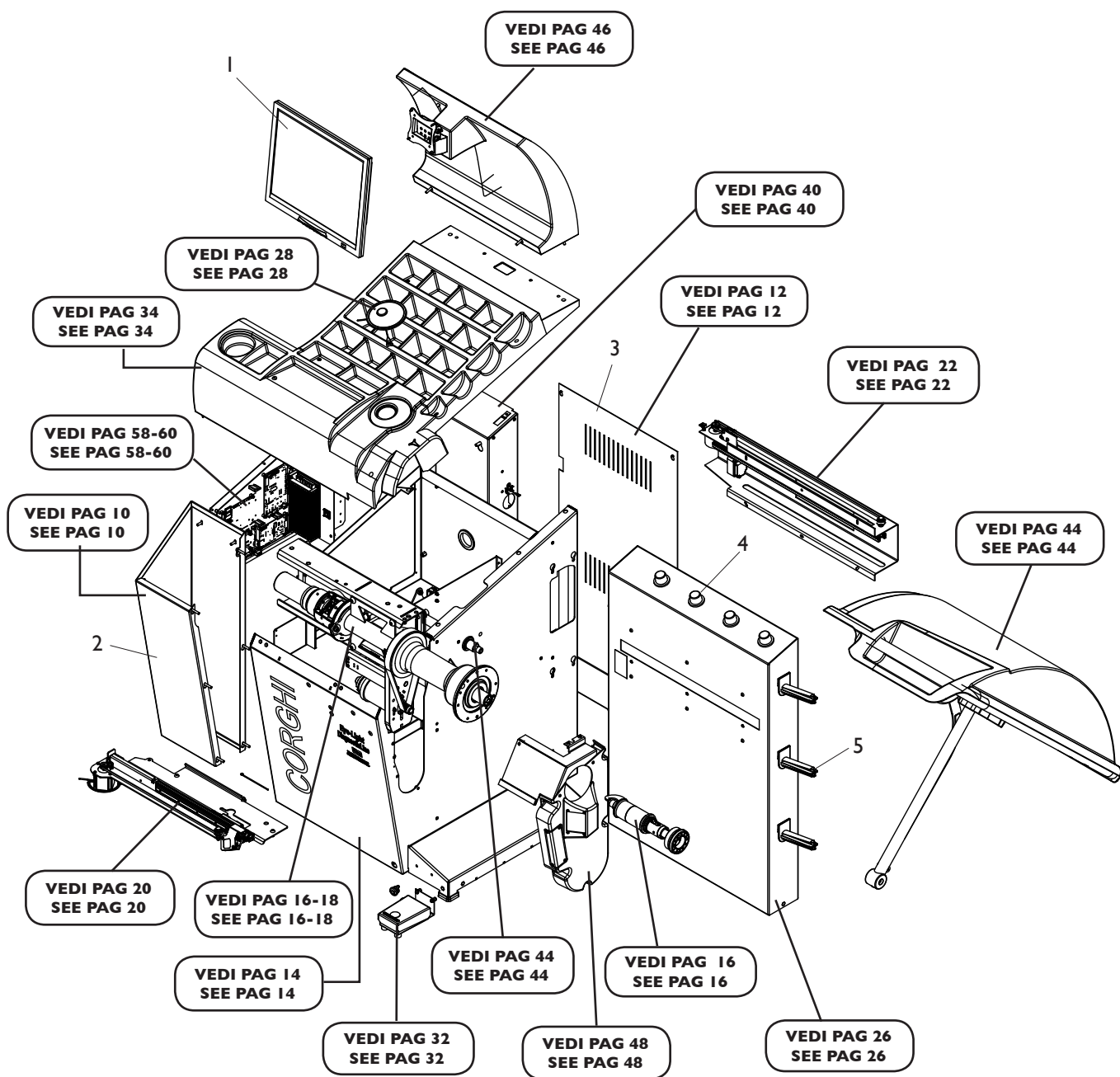


Code: 4-117243

Production date: 06 / 2013



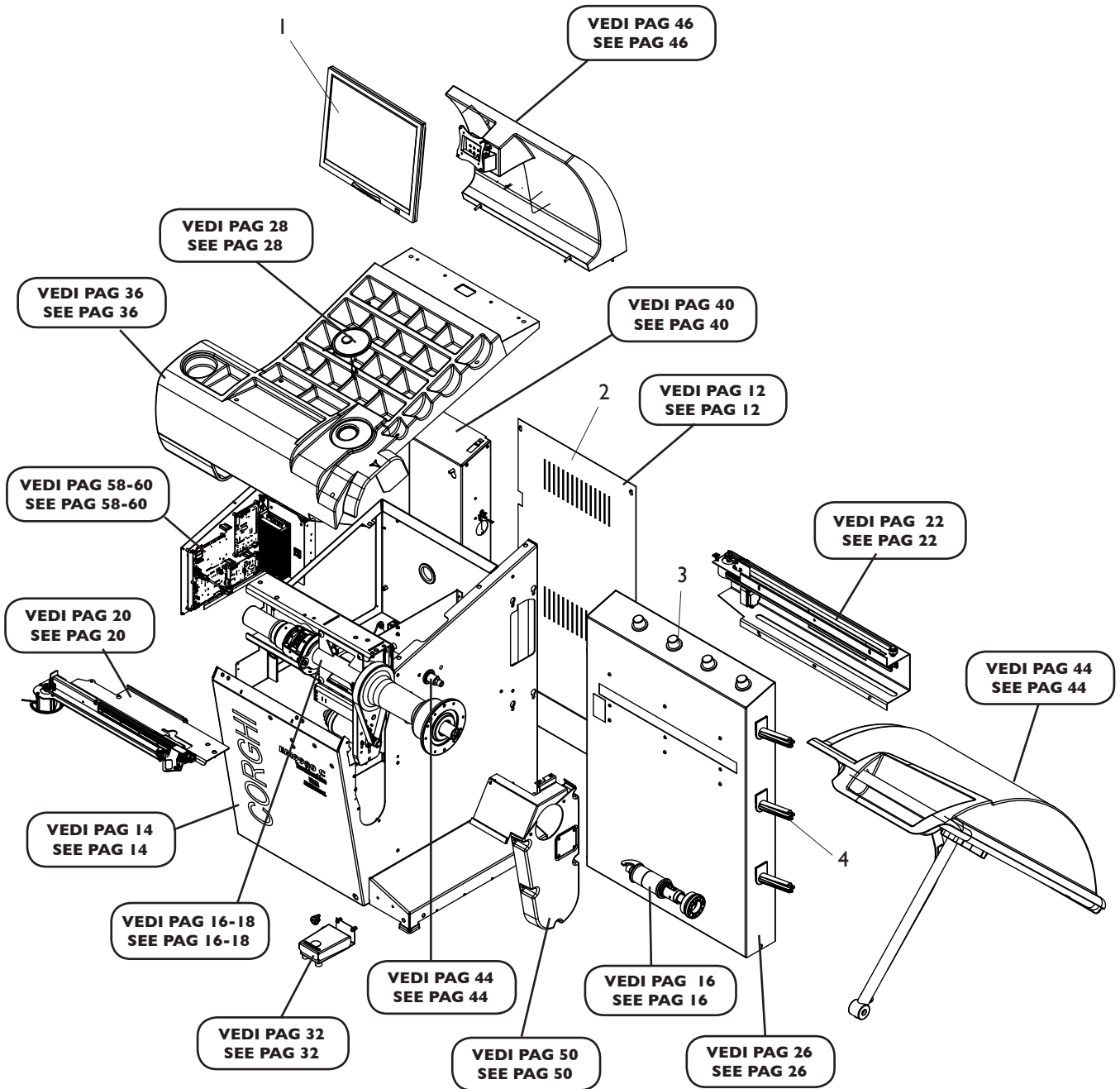
COMPLESSIVO EYELIGHT EYELIGHT OVERALL



Rif. Ref.	Codice Code	Descrizione	Description
1	4-118435	MONITOR LCD TOUCHSCREEN	TOUCHSCREEN LCD MONITOR
2	4-118473/90	COLONNA PORTAPESI SX	WEIGHT HOLDER LEFT COLUMN
3	4-117364/90	PANNELLO CHIUSURA POSTERIORE	REAR LOCKING PANEL
4	441224	PORTACONO AD INCASTRO	CONE HOLDER INTERLOCKING
5	438319	PORTAFLANGIA A SLITTA	SLIDING HOLDER FLANGE

COMPLESSIVO EM9980

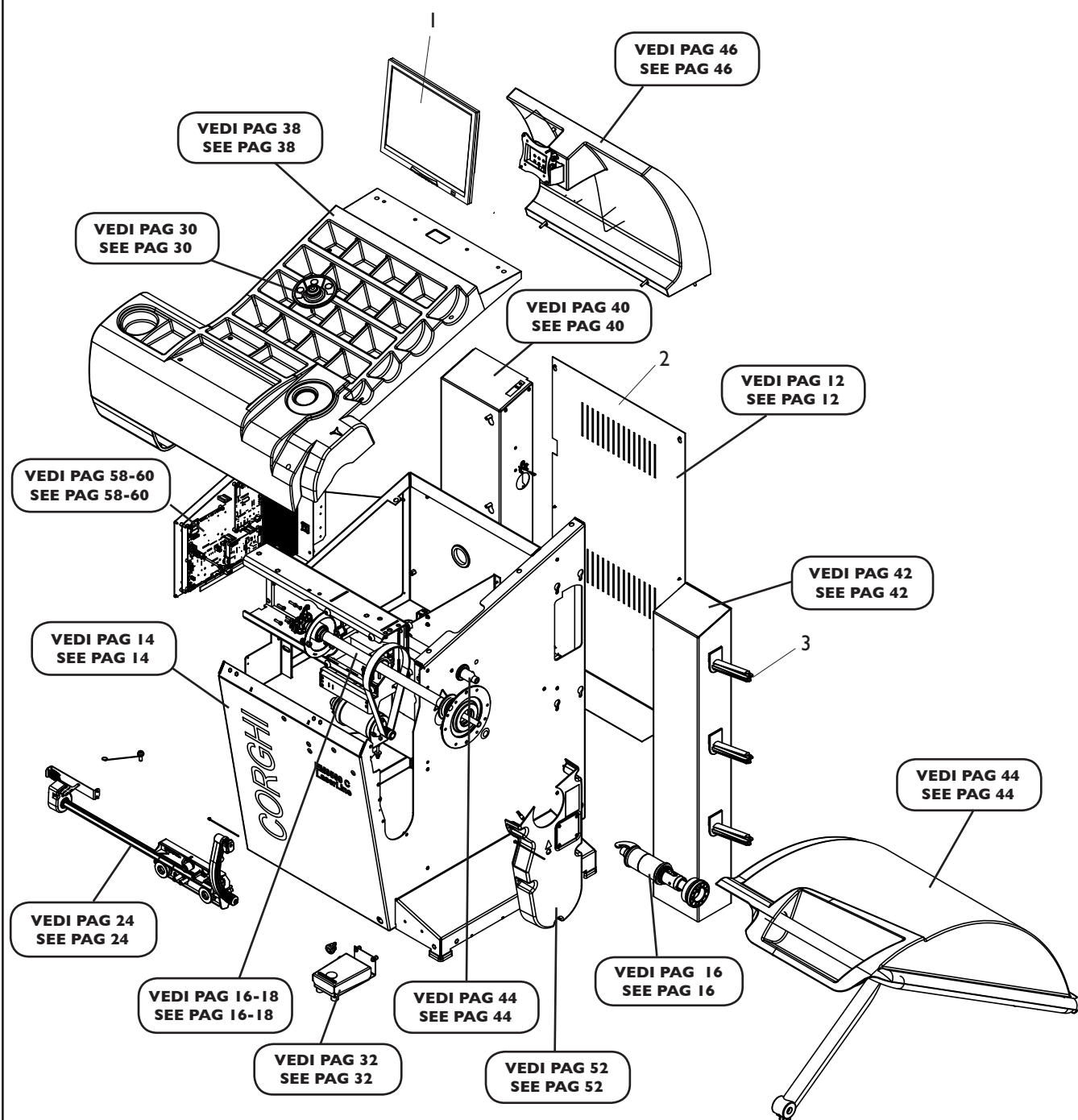
EM9980 OVERALL



Rif. Ref.	Codice Code	Descrizione	Description
1	4-118435	MONITOR LCD TOUCHSCREEN	TOUCHSCREEN LCD MONITOR
2	4-117364/16	PANNELLO CHIUSURA POSTERIORE	REAR LOCKING PANEL
3	441224	PORTACONO AD INCASTRO	CONE HOLDER INTERLOCKING
4	438319	PORTAFLANGIA A SLITTA	SLIDING HOLDER FLANGE

COMPLESSIVO EM9580

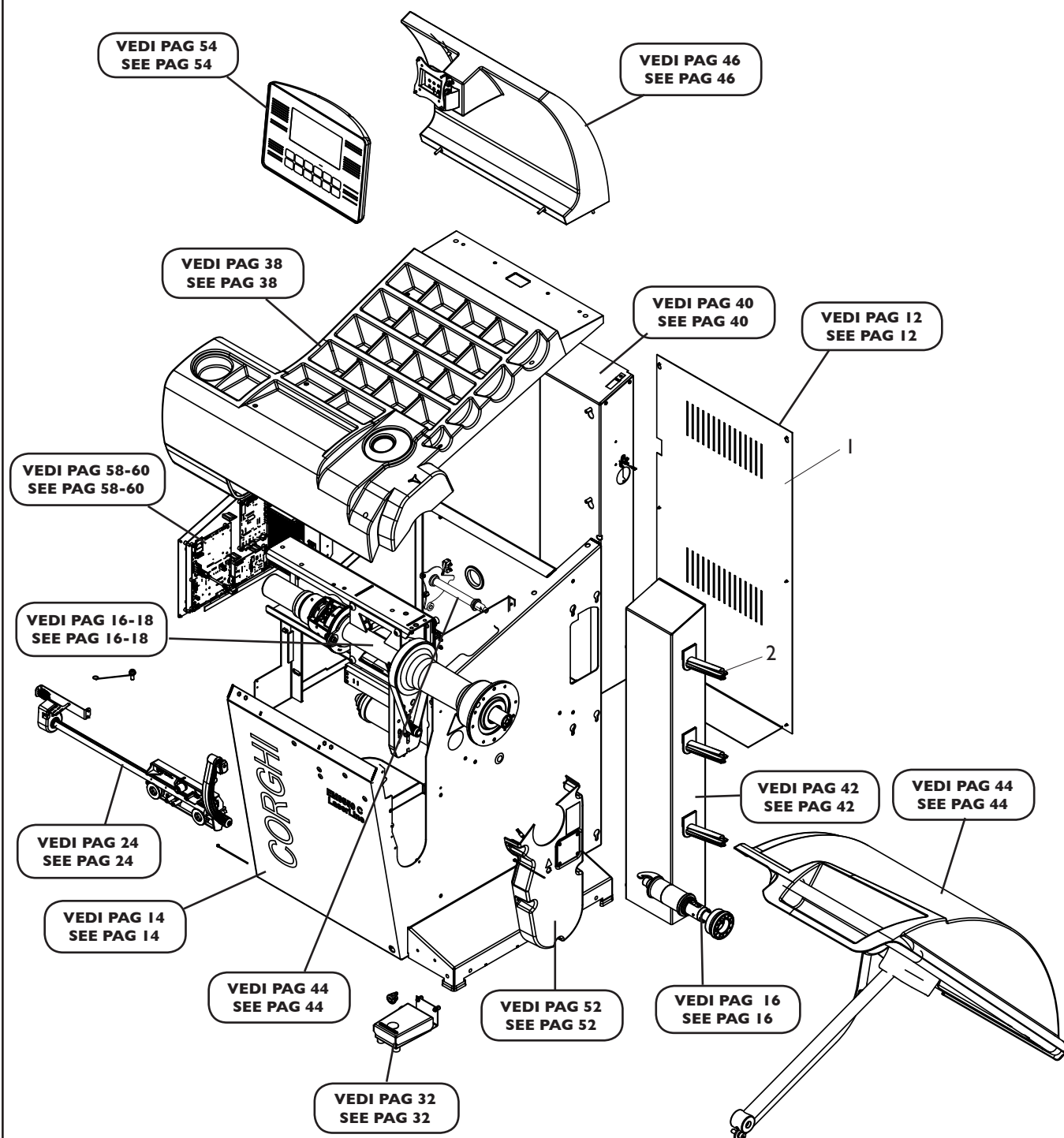
EM9580 OVERALL



Rif. Ref.	Codice Code	Descrizione	Description
1	3-00673	MONITOR 22" LCD/LED WIDE	LCD MONITOR 22"
2	4-117364/16	PANNELLO CHIUSURA POSTERIORE	REAR LOCKING PANEL
3	438319	PORTAFLANGIA A SLITTA	SLIDING HOLDER FLANGE

COMPLESSIVO EM9550

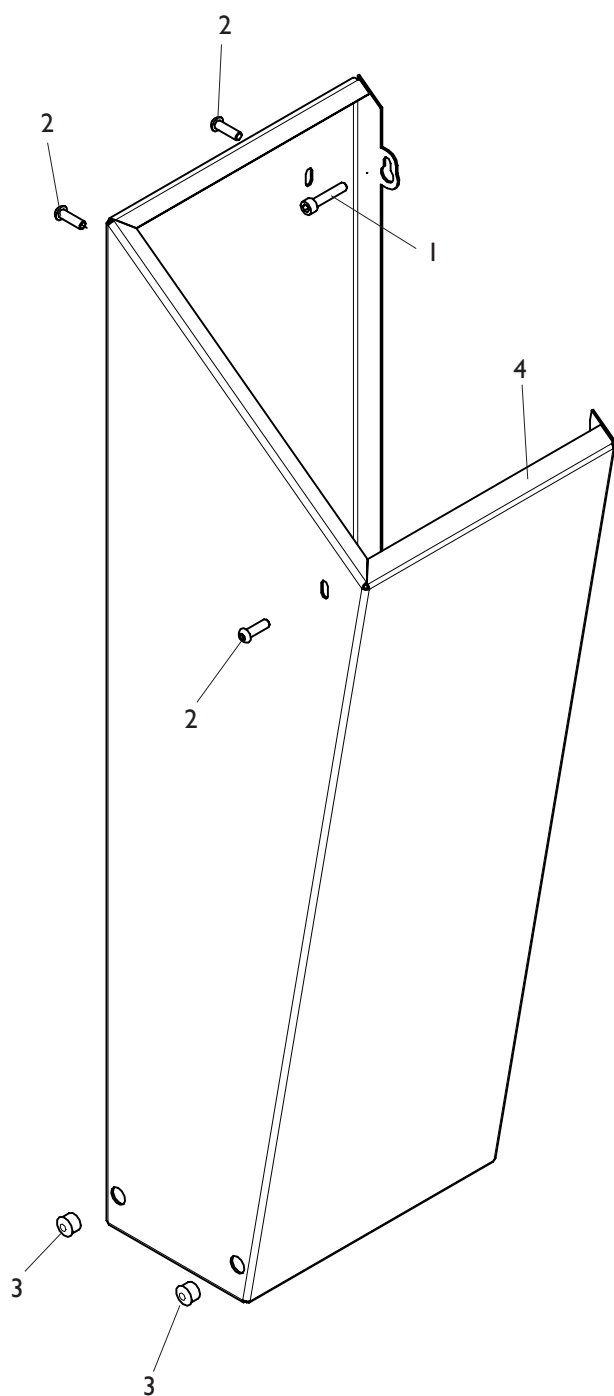
EM9550 OVERALL



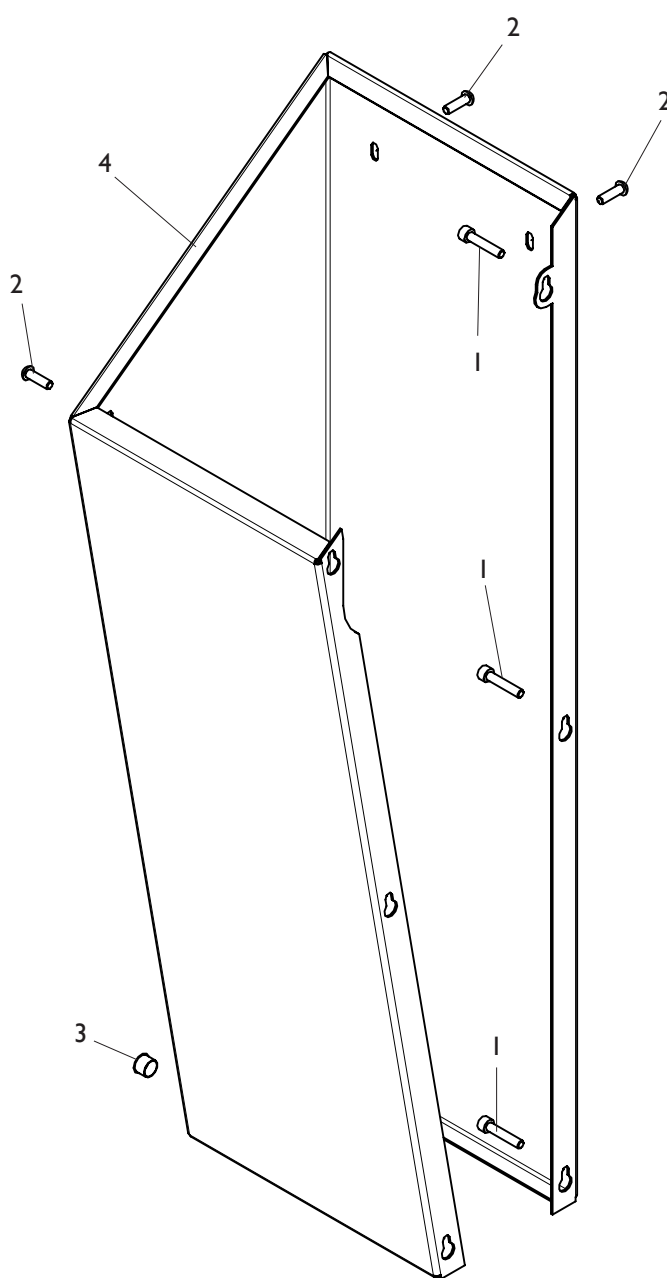
Rif. Ref.	Codice Code	Descrizione	Description
1	4-117364/16	PANNELLO CHIUSURA POSTERIORE	REAR LOCKING PANEL
2	438319	PORTAFLANGIA A SLITTA	SLIDING HOLDER FLANGE

COLONNA PORTAPESI SX EYELIGHT EYELIGHT WEIGHT HOLDER LEFT COLUMN

**VISTA LATERALE
SIDE VIEW**

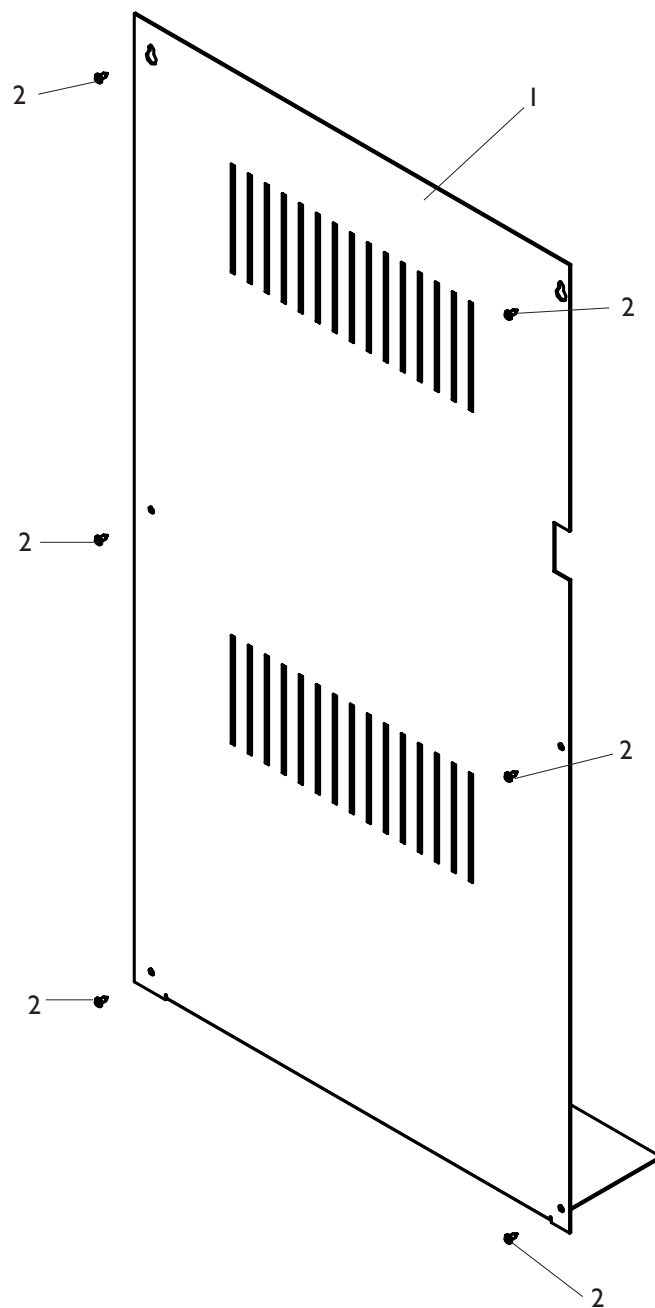


**VISTA ANTERIORE
FRONT VIEW**



Rif. Ref.	Codice Code	Descrizione	Description
1	2-00863	VTCEI M6X30	CIRCULAR SOCKET HEAD SCREW M6X30
2	2-02147	VTBEI M6X30	ROUNDED HEAD SCREW SOCKET M6X30
3	435957	TAPPO NERO D.12,7 SP3,2	CAP BLACK D.12,7 SP3,2
4	4-118473/90	COLONNA PORTAPESI SX	WEIGHT HOLDER LEFT COLUMN

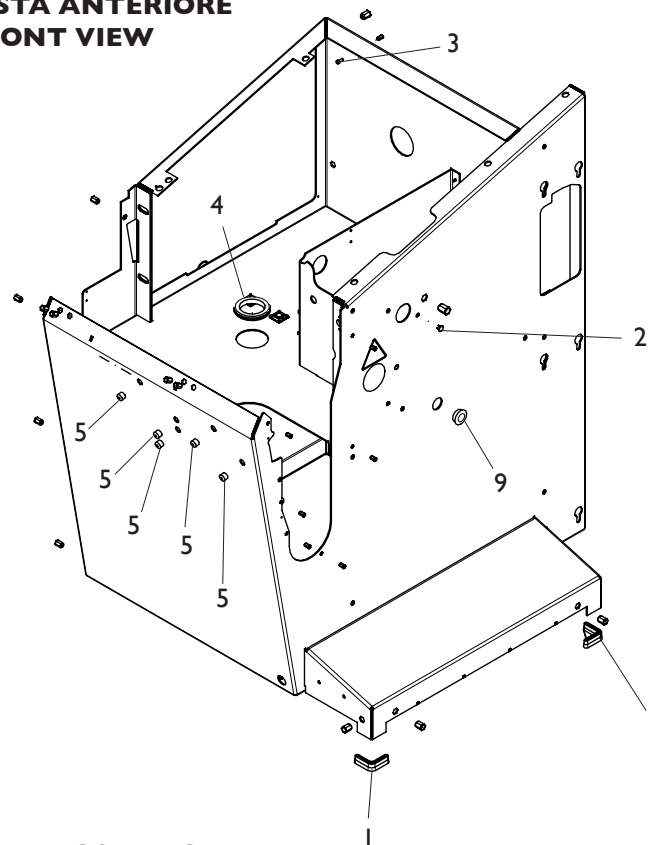
PANNELLO POSTERIORE REAR PANEL



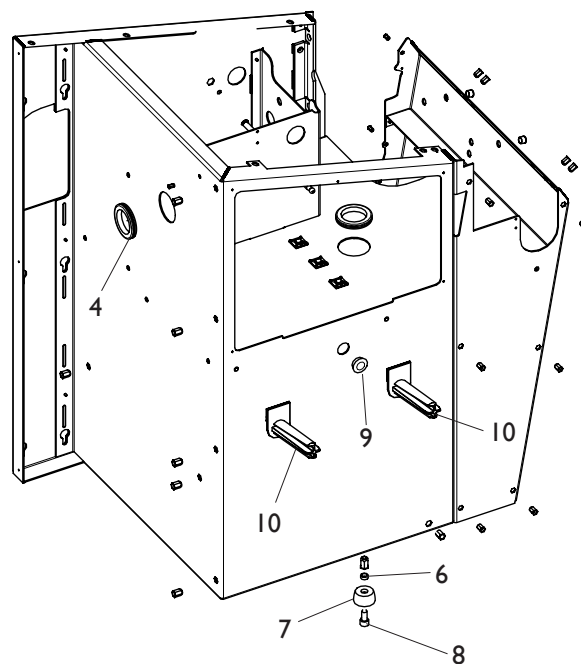
Rif. Ref.	Codice Code	Descrizione	Description
1	4-117364/90	PANNELLO CHIUSURA POSTERIORE EYELIGHT	REAR LOCKING PANEL EYELIGHT
1	4-117364/16	PANNELLO CHIUS. POST. EM9980-M9580-9550	REAR LOCKING PANEL EM9980-M9580-9550
2	2-80171	VATBIC D.3,9X9,5	ROUNDED HEAD SCREW TAPPING CROSS CUT D.3,9X9,5

CASSONE BODY

**VISTA ANTERIORE
FRONT VIEW**



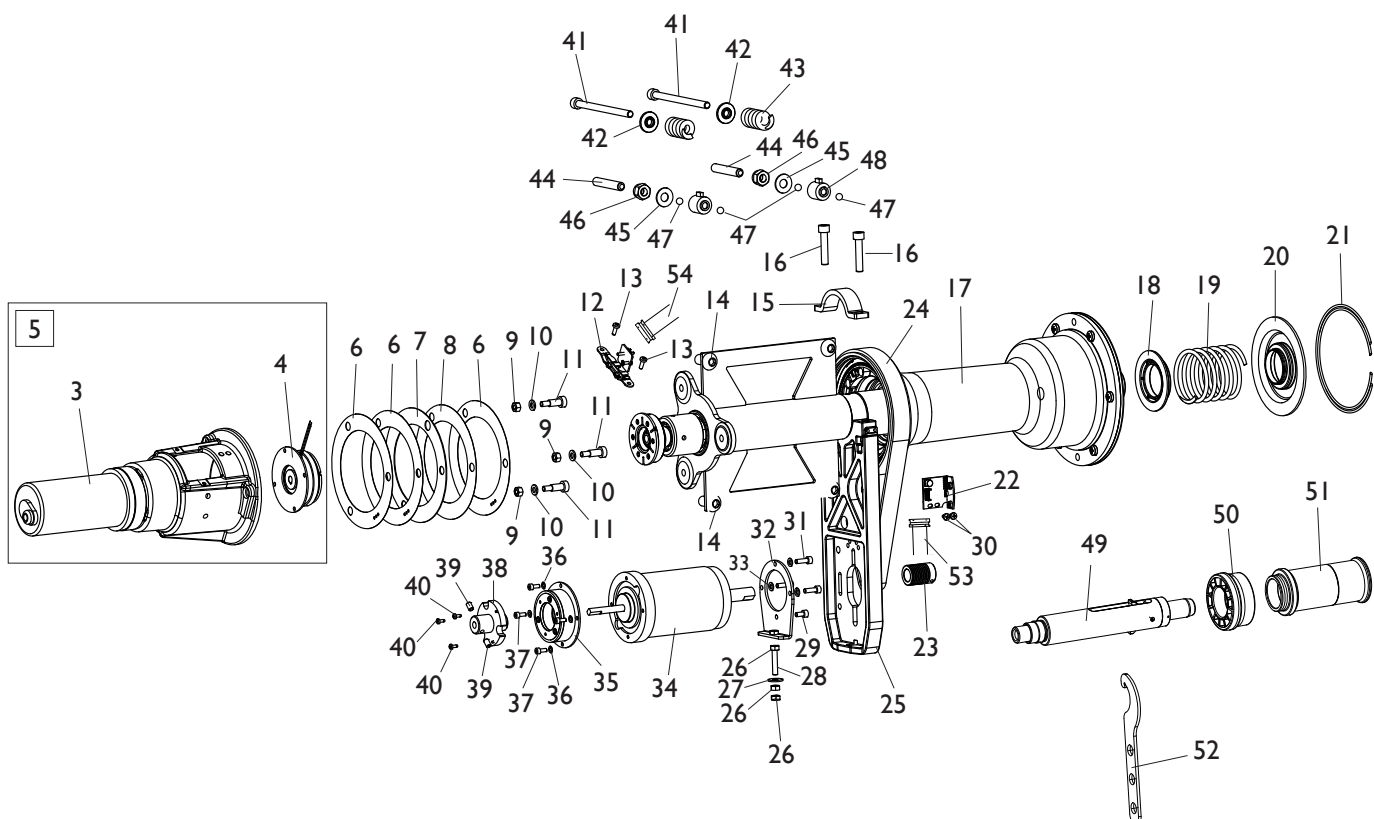
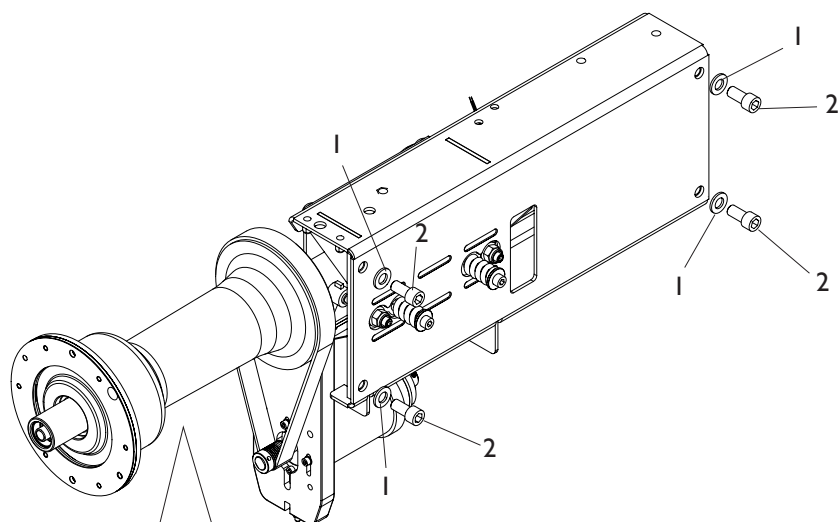
**VISTA POSTERIORE
REAR VIEW**



Rif. Ref.	Codice Code	Descrizione	Description
1	4-117130	PIEDE D.35X35	FOOT D.35X35
2	3-02956	TAPPO IN PLASTICA NERO D.8	PLASTIC BLACK CAP D.8
3	2-02080	VTCEI M4X10	CIRCULAR SOCKET HEAD SCREW M4X10
4	460314	PASSACAVO ROTONDO D.48X60X2,5	PASSACAVO ROUND
5	435957	TAPPO NERO D.12,7 SP3,2	BLACK CAP D.12,7 SP3,2
6	360095	DISTANZIALE PIEDE	FOOT SPACER
7	460029	PIEDE	FOOT
8	2-01985	VTCEI M10X20	CIRCULAR SOCKET HEAD SCREW M10X20
9	456193	TAPPO NERO D.25,4 SP4,4	BLACK CAP D.25,4 SP4,4
10	438319	PORTAFLANGIA A SLITTA	SLIDING HOLDER FLANGE

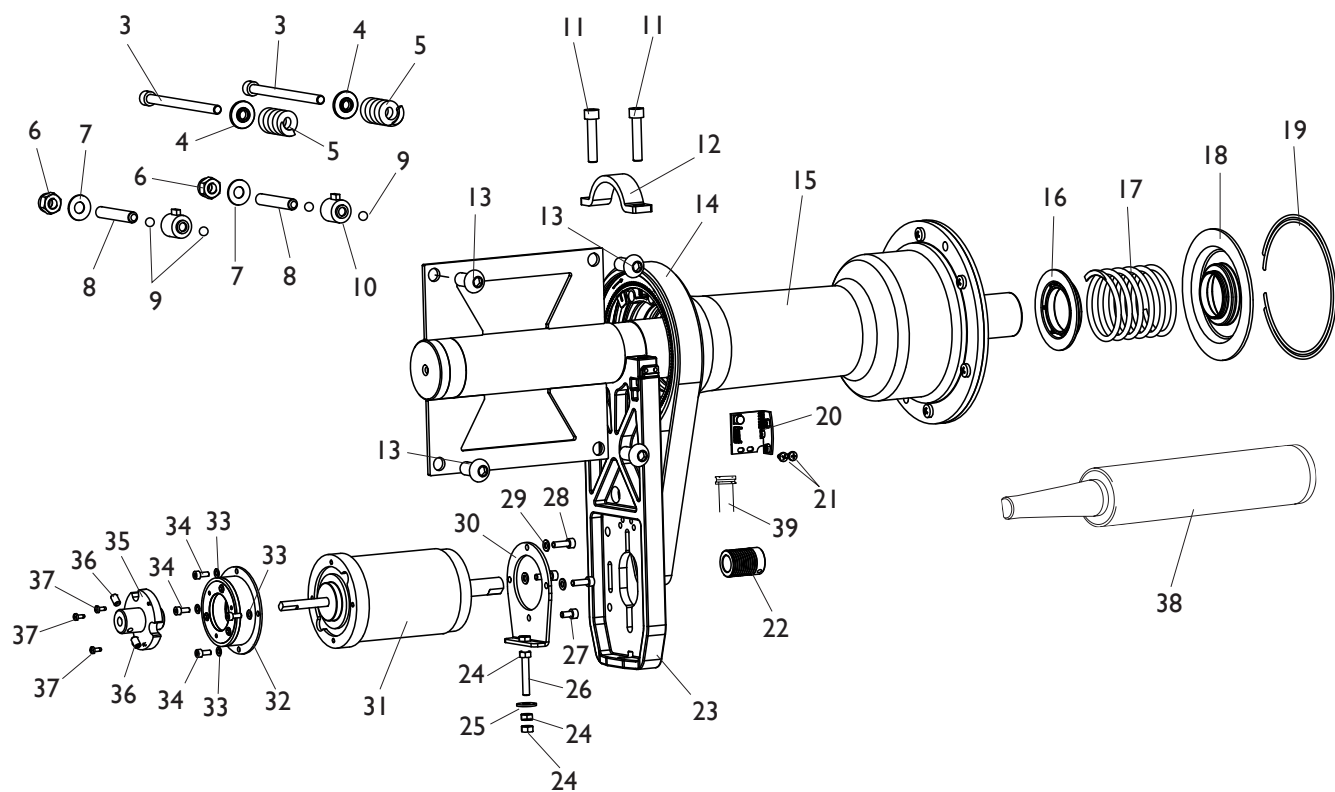
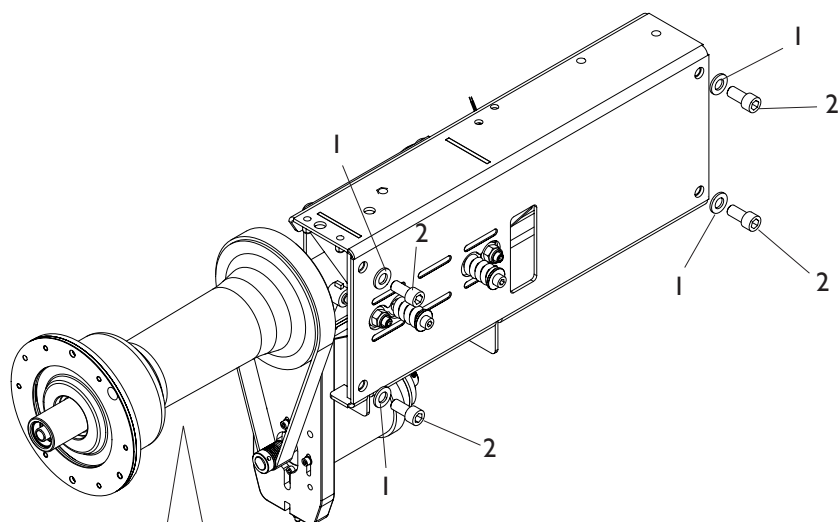
GRUPPO OSCILLANTE C

OSCILLATING GROUP C



Rif. Ref.	Codice Code	Descrizione	Description
1	2-00214	RONDELLA D.12	WASHER D.12
2	2-80164	VTCEI M12X25	CIRCULAR SOCKET HEAD SCREW M12X25
3	4-105403	MOTORIDUTTORE	MOTOR GEAR
4	5-101987	FRIZIONE	CLUTCH
5	5-103271	MOTORIDUTTORE CPL	COMPLETE MOTOR GEAR
6	4-105937	RONDELLA SPESSORAMENTO D.0,3	WASHER SHIMMING D.0,3
7	4-105936	RONDELLA SPESSORAMENTO D.1	WASHER SHIMMING D.1
8	4-113011	RONDELLA SPESSORAMENTO D.0,1	WASHER SHIMMING D.0,1
9	2-00111	DADO ES.A. M6	AUTOLOCKING HEXAGON NUT M6
10	2-00211	RONDELLA D.6	WASHER D.6
11	2-03091	VSTCCE 8X16 M6	SPECIAL SCREW 8X16 M6
12	5-101537	SCHEDA ENCODER REFLEX	REFLEX ENCODER BOARD
13	2-00609	VTICIC M4X12	HEAD SCREW CROSS CUT M4X12
14	2-03217	VTBEI M12X25	ROUNDED HEAD SCREW SOCKET M12X25
15	4-104591	FLANGIA SUPPORTO MOTORE	MOTOR SUPPORT FLANGE
16	2-02008	VTCEI 1/2F M8X40	CIRCULAR SOCKET HEAD SCREW 1/2F M8X40
17	5-120044	GRUPPO OSCILLANTE C	OSCILLATING GROUP C
18	4-104589	DISCO PORTA MOLLA D.40	DISC HOLDER SPRING D.40
19	4-104588	MOLLA D.4,8X66X121	SPRING D.4,8X66X121
20	4-104590	DISCO PREMI MOLLA D.40	DISC SPING COMPRESSOR D.40
21	4-101740	ANELLO D.127,5X2,5	RING D.127,5X2,5
22	5-120045	SCHEDA RICERCA	SEARCH P.C. BOARD
23	4-104599	PULEGGIA	PULLEY
24	3-01750	CINGHIA	BELT
25	4-107205	SUPPORTO MOTORE	MOTOR SUPPORT
26	2-00146	DADO ES.N. M6	NORMAL HEXAGON NUT M6
27	2-00679	ROSETTA D.6,6X18X1,5	WASHER D.6,6X18X1,5
28	2-03427	VTE M6X50	HEXAGON HEAD SCREW M6X50
29	2-00891	VTCEI M5X10	CIRCULAR SOCKET HEAD SCREW M5X10
30	2-03425	VATCCIC M4X6	SCREW TAPPING HEAD CUTTING CIRCULAR CROSS M4X6
31	2-03003	VTCEI M5X20	CIRCULAR SOCKET HEAD SCREW M5X20
32	4-104598	FLANGIA MOTORE	MOTOR FLANGE
33	2-71546	ROSETTA D.5	WASHER D.5
34	5-103007	MOTORE 48V	MOTOR 48V
35	5-104252	FRENO	BRAKE
36	2-71541	ROSETTA D.4	WASHER D.4
37	2-02080	VTCEI M4X10	CIRCULAR SOCKET HEAD SCREW M4X10
38	4-104596	MOZZO FRENO	HUB BRAKE
39	2-00672	VSTEI PPA. M6X10	CSK SCREW SOCKET M6X10
40	2-02908	VATCCIC M3X8	SCREW TAPPING HEAD CUTTING CIRCULAR CROSS M3X8
41	2-03661	VTCEI M8X120	CIRCULAR SOCKET HEAD SCREW M8X120
42	4-104650	BOCCOLA POSTERIORE MOLLA PICK UP	BUSH REAR SPRING PICK UP
43	4-104652	MOLLA D.6X25X41	SPRING D.6X25X41
44	2-01887	VSTEI P.CP. M10X60	CSK SCREW SOCKET M10X60
45	424993	MOLLA D.10,2X23X1,25	SPRING D.10,2X23X1,25
46	2-01019	DADO ES.N.A. M10	NORMAL AUTOLOCKING HEXAGON NUT M10
47	2-00243	SFERA 5/16"	SPHERE 5/16"
48	5-103533	PICK-UP	PICK-UP
49	5-105864	MOZZO BLOCCAGGIO RUOTA	LOCKING WHEEL HUB
50	4-115864	DISTANZIALE RUOTA	WHEEL SPACER
51	5-105873	MANICOTTO BLOCCAGGIO RUOTA	COUPLING LOCKING WHEEL
52	4-117227	CHIAVE SPECIALE	SPECIAL KEY
53	449319	FLAT 8 VIE L.1100mm	FLAT CABLE 8 WAY L.1100mm
54	4-102558	FLAT 4VIE L.800mm	FLAT CABLE 4 WAY L.800mm

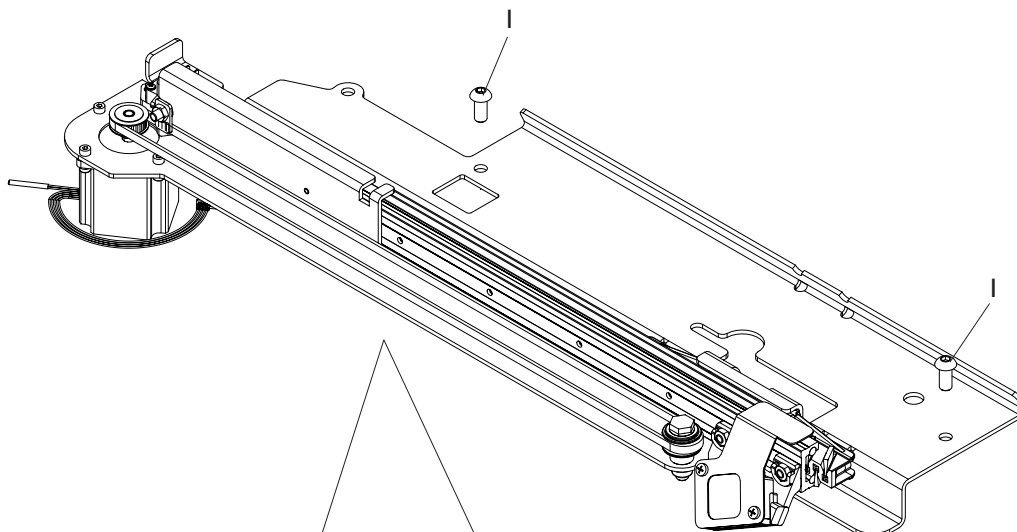
GRUPPO OSCILLANTE OSCILLATING GROUP



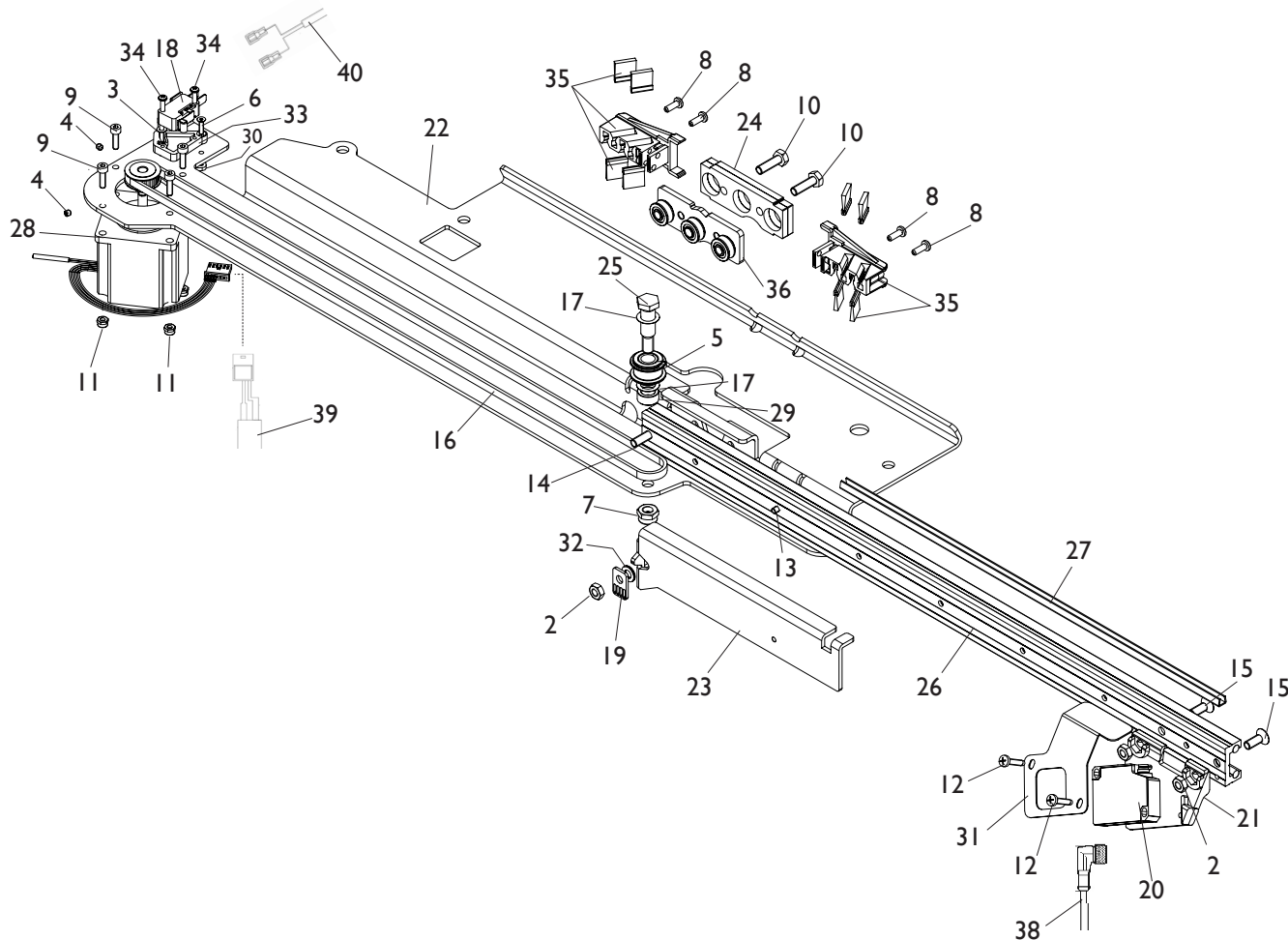
Rif. Ref.	Codice Code	Descrizione	Description
1	2-00214	RONDELLA D.12	WASHER D.12
2	2-80164	VITE TCEI M12X25	CIRCULAR SOCKET HEAD SCREW M12X25
3	2-03661	VTCEI M8X120	CIRCULAR SOCKET HEAD SCREW M8X120
4	4-104650	BOCCOLA POSTERIORE MOLLA PICK UP	BUSH REAR SPRING PICK UP
5	4-104652	MOLLA D.6X25X41	SPRING D.6X25X41
6	2-01019	DADO ES.N.A. M10	NORMAL AUTOLOCKING HEXAGON NUT M10
7	424993	MOLLA D.10,2X23X1,25	SPRING D.10,2X23X1,25
8	2-01887	VSTEI P.CP. M10X60	CSK SCREW SOCKET M10X60
9	2-00243	SFERA 5/16"	SPHERE 5/16"
10	5-103533	PICK-UP	PICK-UP
11	2-02008	VTCEI 1/2F M8X40	CIRCULAR SOCKET HEAD SCREW 1/2F M8X40
12	4-104591	FLANGIA SUPPORTO MOTORE	MOTOR SUPPORT FLANGE
13	2-03217	VTBEI M12X25	ROUNDED HEAD SCREW SOCKET M12X25
14	3-01750	CINGHIA	BELT
15	5-120046	GRUPPO OSCILLANTE	OSCILLATING GROUP
16	4-104589	DISCO PORTA MOLLA D.40	DISC HOLDER SPRING D.40
17	4-104588	MOLLA D.4,8X66X121	SPRING D.4,8X66X121
18	4-104590	DISCO PREMI MOLLA D.40	DISC SPING COMPRESSOR D.40
19	4-101740	ANELLO D.127,5X2,5	RING D.127,5X2,5
20	5-120045	SCHEDA RICERCA	SEARCH P.C. BOARD
21	2-03425	VATCCIC M4X6	SCREW TAPPING HEAD CUTTING CIRCULAR CROSS M4X6
22	4-104599	PULEGGIA	PULLEY
23	4-107205	SUPPORTO MOTORE	MOTOR SUPPORT
24	2-00146	DADO ES.N. M6	NORMAL HEXAGON NUT M6
25	2-00679	ROSETTA D.6,6X18X1,5	WASHER D.6,6X18X1,5
26	2-03427	VTE M6X50	HEXAGON HEAD SCREW M6X50
27	2-00891	VTCEI M5X10	CIRCULAR SOCKET HEAD SCREW M5X10
28	2-03003	VTCEI M5X20	CIRCULAR SOCKET HEAD SCREW M5X20
29	2-71546	ROSETTA D.5	WASHER D.5
30	4-104598	FLANGIA MOTORE	MOTOR FLANGE
31	5-103007	MOTORE 48V	MOTOR 48V
32	5-104252	FRENO	BRAKE
33	2-71541	ROSETTA D.4	WASHER D.4
34	2-02080	VTCEI M4X10	CIRCULAR SOCKET HEAD SCREW M4X10
35	4-104596	MOZZO FRENO	HUB BRAKE
36	2-00672	VSTEI P.PA. M6X10	CSK SCREW SOCKET M6X10
37	2-02908	VATCCIC M3X8	SCREW TAPPING HEAD CUTTING CIRCULAR CROSS M3X8
38	5-101514	MOZZO BLOCCAGGIO RUOTA	LOCKING WHEEL HUB
39	449319	FLAT 8 VIE L.1100mm	FLAT CABLE 8 WAY L.1100mm

RILEVATORE INTERNO LASER EYELIGHT-EM9980

EYELIGHT-EM9980 INTERNAL LASER DETECTOR



37



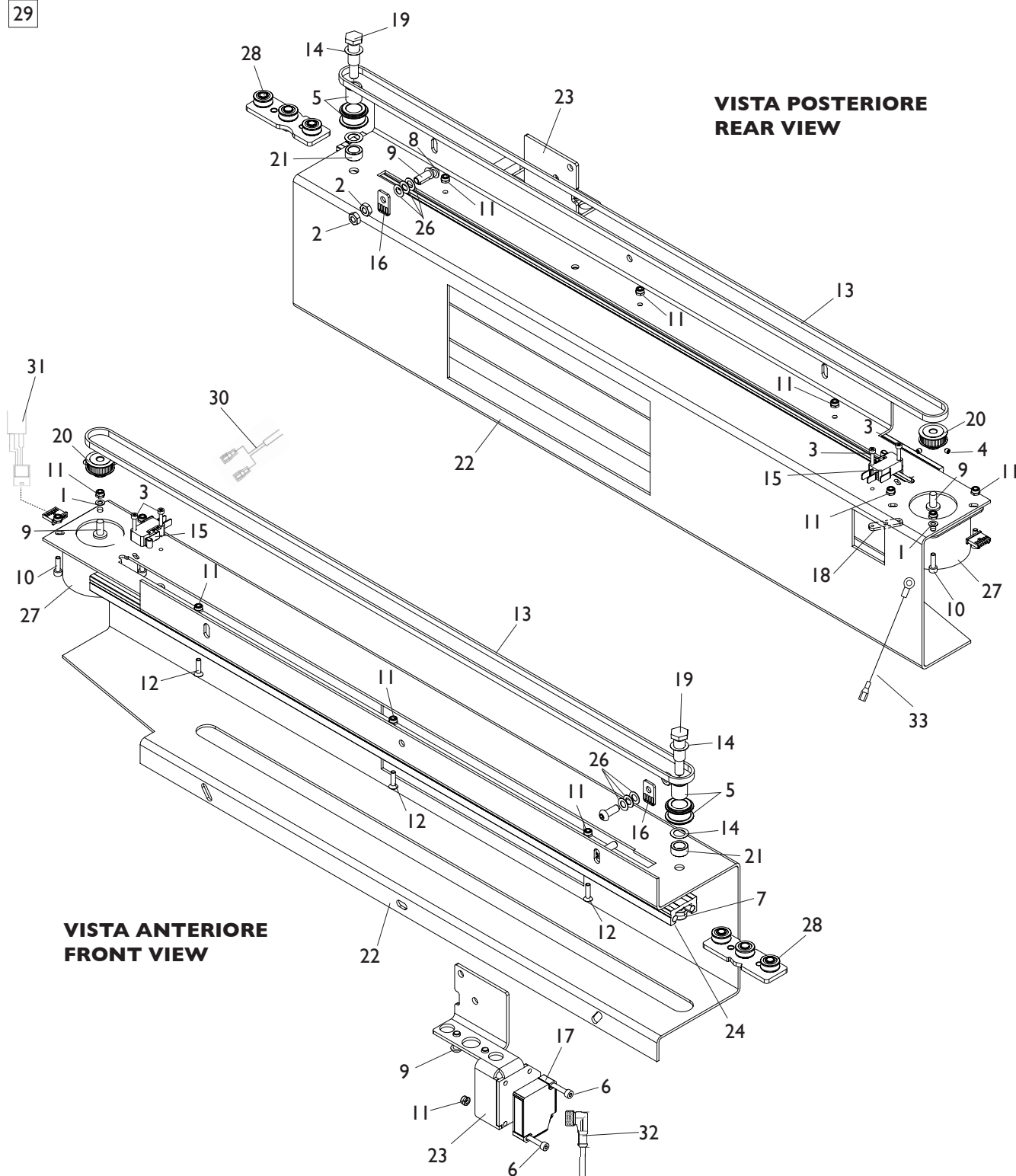
Rif. Ref.	Codice Code	Descrizione	Description
1	2-02157	VTBEI M8X18	ROUNDED HEAD SCREW SOCKET M8X18
2	2-00167	DADO ES. B. M6	LOW HEXAGON NUT M6
3	2-00208	RONDELLA D.3	WASHER D.3
4	2-00537	VTSCE M4X4	CIRCULAR HEHXAGONAL SCREW CSK M4X4
5	5-103053	ASTUCCIO + PULEGGIA	BOX WITH PULLEY
6	2-00924	VTSPEI M3X12	CSK FLAT HEAD SCREW SOCKET M3X12
7	2-01137	DADO ES.B.A. M8	LOW AUTOLOCKING HEXAGON NUT M8
8	2-02095	VTCCIC M.4X12	HEAD SCREW CROSS CUTTING CIRCULAR CONE M4X12
9	2-02260	VTCEI M4X14	CIRCULAR SOCKET HEAD SCREW M4X14
10	2-02339	VTE M6X20	HEXAGON HEAD SCREW M6X20
11	2-02883	DADO ES.B.A. M4	LOW AUTOLOCKING HEXAGON NUT M4
12	2-03102	VTCCIC M4X20	HEAD SCREW CROSS CUTTING CIRCULAR CONE M4X20
13	2-72205	VTSPEI M6X20	CSK FLAT HEAD SCREW SOCKET M6X20
14	2-80129	VTSPEI M4X8	CSK FLAT HEAD SCREW SOCKET M4X8
15	2-80134	VTSPEI M6X16	CSK FLAT HEAD SCREW SOCKET M6X16
16	3-00689	CINGHIA	BELT
17	314589	RONDELLA D.10,25X16X0,2	WASHER D.10,25X16X0,2
18	4-102043	MICROINTERRUTTORE	MICROSWITCH
19	4-107120	PIASTRA FISSAGGIO CINGHIA	BELT PLATE
20	4-107134	SENSORE LASER	LASER SENSOR
21	4-108198	SUPPORTO LASER ANTERIORE	FRONT LASER SUPPORT
22	4-111360	SUPPORTO RILEVATORE	DETECTOR SUPPORT
23	4-111365	DISTANZIALE CINGHIA	BELT SPACER
24	4-112489	PIASTRA CARRELLO 5mm	PLATE CART 5mm
25	4-112495	PERNO ECCENTRICO D.10 M8	ECCENTRIC PIN D.10 M8
26	4-112496	GUIDA RILEVATORE ANTERIORE	FRONT DETECTOR GUIDE
27	4-112497	CANALINA PER CAVI	CABLE TRUNKING
28	5-103745	MOTORE + PULEGGIA	MOTOR WITH PULLEY
29	4-112504	DISTANZIALE D.10X15X6,5	SPACER D.10X15X6,5
30	4-113353	PIASTRINA REGOLAZIONE MICRO	MICRO ADJUSTMENT PLATE
31	4-113636	COVER LASER	LASER COVER
32	414384	RONDELLA D.6X12X0,5	WASHER D.6X12X0,5
33	435898	SUPPORTO MICRO	MICRO SUPPORT
34	457023	VATBIC M.3X14	ROUNDED HEAD SCREW TAPPING CROSS CUT M3X14
35	5-103880	TERGI GUIDA	BLADE GUIDE
36	5-103881	CARRELLO	TROLLEY
37	5-103579	RILEVATORE INTERNO LASER	INTERNAL LASER DETECTOR
38	5-102440	CAVO SENSORE LASER	LASER SENSOR CABLE
39	4-118216	CAVO 4X0,22 6P L.650mm	CABLE 4X0,22 6P L.650mm
40	4-118109	CAVO 2P L.1400mm	CABLE 2P L.1400mm

RILEVATORE POSTERIORE EYELIGHT-EM9980

EYELIGHT-EM9980 REAR DETECTOR

29

**VISTA POSTERIORE
REAR VIEW**

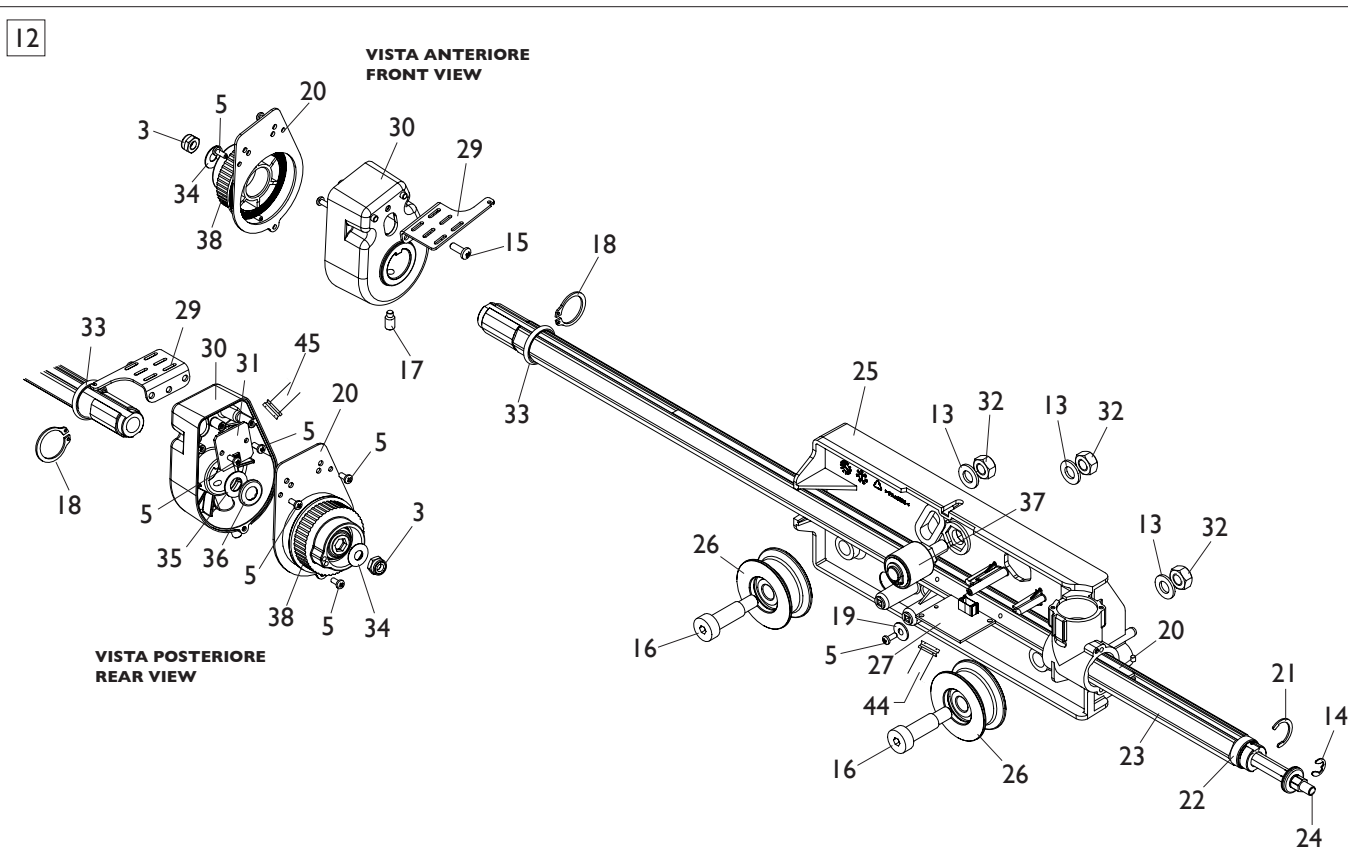
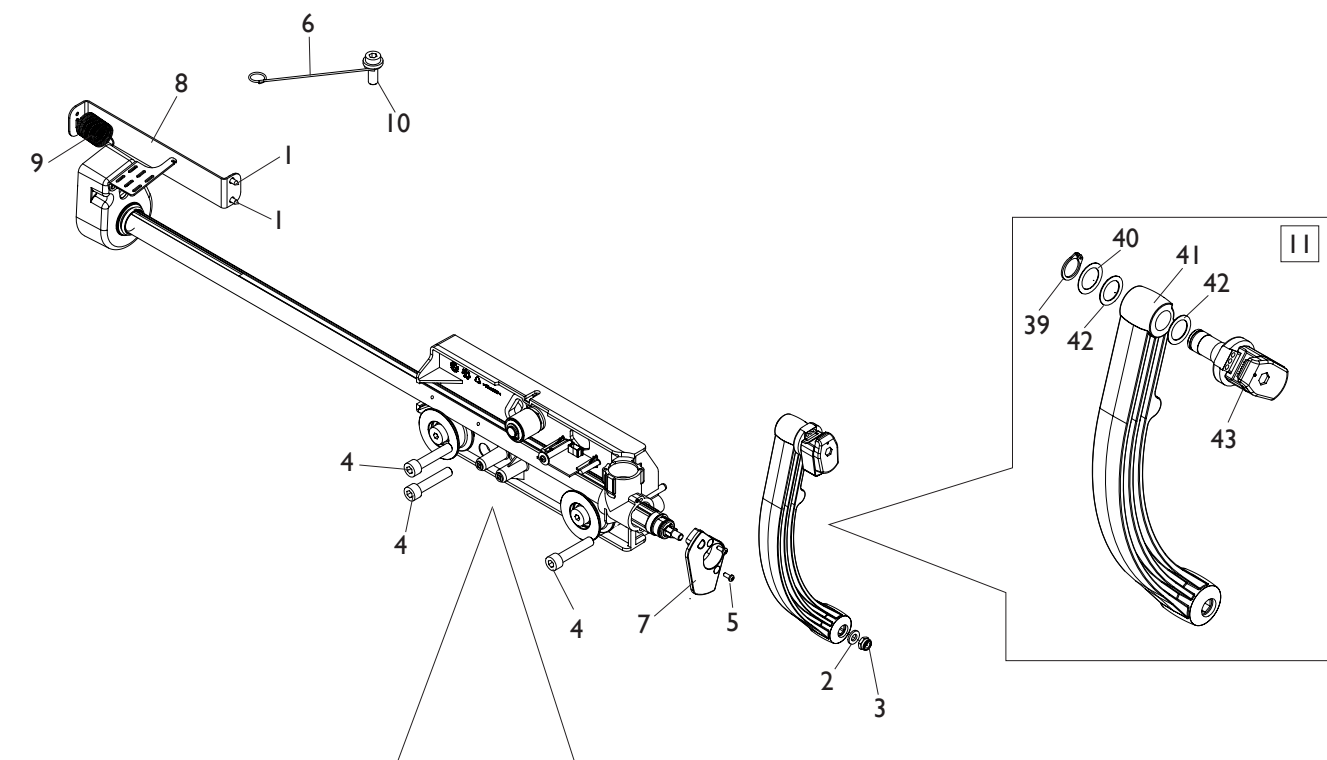


**VISTA ANTERIORE
FRONT VIEW**

Rif. Ref.	Codice Code	Descrizione	Description
1	2-94059	ROSETTA D.4	WASHER D.4
2	2-00167	DADO ES. B. M6	LOW HEXAGON NUT M6
3	2-00288	VTCEI M3X16	CIRCULAR SOCKET HEAD SCREW M3X16
4	2-00537	VTSC E M4X4	CIRCULAR HEHXAGONAL SCREW CSK M4X4
5	5-103053	ASTUCCIO + PULEGGIA	BOX WITH PULLEY
6	2-00911	VTCEI M4X25	CIRCULAR SOCKET HEAD SCREW M4X25
7	2-01137	DADO ES.B.A. M8	LOW AUTOLOCKING HEXAGON NUT M8
8	2-02147	VTBEI M6X20	ROUNDED HEAD SCREW SOCKET M6X20
9	2-02155	VTBEI M6X16	ROUNDED HEAD SCREW SOCKET M6X16
10	2-02260	VTCEI M4X14	CIRCULAR SOCKET HEAD SCREW M4X14
11	2-02883	DADO ES.B.A. M4	LOW AUTOLOCKING HEXAGON NUT M4
12	2-02928	VTSP E M4X16	CSK FLAT HEAD SCREW SOCKET M4X16
13	3-80139	CINGHIA	BELT
14	314589	RONDELLA D.10,25X16X0,2	WASHER D.10,25X16X0,2
15	4-102043	MICROINTERRUTTORE	MICROSWITCH
16	4-107120	PIASTRA FISSAGGIO CINGHIA	BELT PLATE
17	4-107134	SENSORE LASER	LASER SENSOR
18	4-111645	PIASTRA REGOLAZIONE MICRO	MICRO ADJUSTMENT PLATE
19	4-112495	PERNO ECCENTRICO D.10 M8	ECCENTRIC PIN D.10 M8
20	4-112503	PULEGGIA	PULLEY
21	4-112504	DISTANZIALE D.10X15X6,5	SPACER D.10X15X6,5
22	4-117159	SUPPORTO RILEVATORE POSTERIORE	DETECTOR REAR SUPPORT
23	4-117160	SUPPORTO SENSORE	SENSOR SUPPORT
24	4-117161	GUIDA RILEVATORE POSTERIORE	REAR DETECTOR GUIDE
26	414384	RONDELLA D.6X12X0,5	WASHER D.6X12X0,5
27	5-103054	MOTORE PASSO 48PP	MOTOR 48PP
28	5-103881	CARRELLO	TROLLEY
29	5-120047	RILEVATORE POSTERIORE	REAR DETECTOR
30	4-116015	CAVO 2P L.1200mm	CABLE 2P L.1200mm
31	4-117895	CAVO 4X0,22 6P L.900mm	CABLE 4X0,22 6P L.900mm
32	5-102440	CAVO SENSORE LASER	LASER SENSOR CABLE
33	5-100237	CAVO DI MASSA	CABLE

RILEVATORE DIGITALE EM9580-EM9550

EM9580-EM9550 DIGITAL DETECTOR

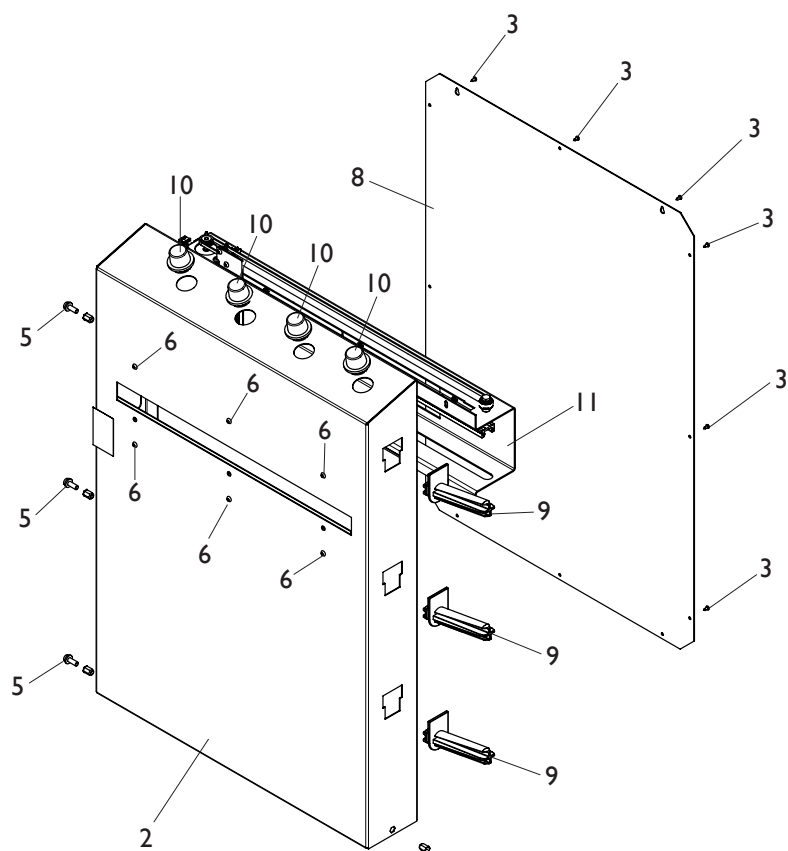


Rif. Ref.	Codice Code	Descrizione	Description
1	2-80171	VTBIC D.3,9X9,5	ROUNDED HEAD SCREW CROSS CUT D.3,9X9,5
2	2-00211	RONDELLA D.6	WASHER D.6
3	2-01979	DADO ES.B.A. M6	LOW AUTOLOCKING HEXAGON NUT M6
4	2-02008	VTCEI 1/2F M8X40	CIRCULAR SOCKET HEAD SCREW 1/2F M8X40
5	2-02071	VATCCIC M.3X8	SCREW TAPPING HEAD CUTTING CIRCULAR CROSS M.3X8
6	4-106132	GANCIO GUIDA CAVO	HOOK CABLE GUIDE
7	4-116241	BOCCOLA FERMO ROTAZIONE	BUSH STOP ROTATION
8	4-117675	TIRANTE MOLLA	ROD SPRING
9	457598	MOLLA D.0,8X15,8X47,6	SPRING D.0,8X15,8X47,6
10	457693	VTCEI M8X20	CIRCULAR SOCKET HEAD SCREW M8X20
11	5-105497	LEVA CON TERMINALE PORTAPESI	LEVER END WEIGHT HOLDERS
12	5-105498	RILEVATORE DIGITALE	DIGITAL DETECTOR
13	2-00212	RONDELLA D.8	WASHER D.8
14	2-01010	ANELLO D.6	SEEGER D.6
15	2-02095	VATCCIC D.4X12	SCREW TAPPING HEAD CUTTING CIRCULAR CROSS D4X12
16	2-03396	VITE SPEC. D.10X25 M8	SPECIAL SCREW D.10X25 M8
17	2-71374	VSTEI M6X12	CSK SCREW ROUND SOCKET M6X12
18	2-71587	ANELLO D.20	SEEGER D.20
19	2-91679	ROSETTA D.4X12	WASHER D.4X12
20	4-101276	RIGA MAGNETICA L.400mm	MAGNETIC LINE L.400mm
21	4-101457	ANELLO D.17 H.17	SEEGER D.17 H.17
22	4-104485	BOCCOLA D.17,5X19,7X6,4	BUSHING D.17,5X19,7X6,4
23	5-120048	ASTA+MAGNETE+RIGA MAGNETICA	ROD AND LINE WITH MAGNET MAGNETIC
24	4-104488	ASTA ESAGONALE COMANDO	COMMAND HEXAGONAL ROD
25	4-104492	SUPPORTO RILEVATORE	DETECTOR SUPPORT
26	4-104525	RULLO INFERIORE	LOWER ROLLER
27	5-103205	SK MAGNETI	MAGNET P.C. BOARD
28	4-109564	LAMIERA CHIUSURA ENCODER	LOCKING PLATE ENCODER
29	4-109566	ATTACCO MOLLA RILEVATORE	SPRING ATTACK DETECTOR
30	4-109567	SUPPORTO SK RILEV.DIAMETRO	P.C. BOARD SUPPORT
31	5-103501	SK ENCODER RIFLETTENTE	P.C. BOARD ENCODER REFLECTIVE
32	421349	DADO AUTOFR.TRISTOP M8	AUTOLOCKING HEXAGON NUT M8
33	441728	OR D.18,64X3,53	O-RING D.18,64X3,53
34	459001	MOLLA D.6,2X15X0,5	SPRING D.6,2X15X0,5
35	4-104483	RALLA A RULLINI D.0,9X17X0,8	FIFTH WHEEL ROLLER D.0,9X17X0,8
36	4-104484	CUSCINETTO ASSIALE A RULLINI D.0,9X17X0,8	AXIAL NEEDLE BEARING D.0,9X17X0,8
37	5-103502	RULLO SUPERIORE	UPPER ROLLER
38	5-103470	PULEGGIA	PULLEY
39	2-00832	ANELLO D.13	SEEGER D.13
40	2-03063	RONDELLA D.14X20X0,3	WASHER D.14X20X0,3
41	4-116242	LEVA	LEVER
42	450073	RONDELLA D.13	WASHER D.13
43	5-101462	TERMINALE PORTAPESI STD	TERMINAL STANDARD WEIGHT HOLDERS
44	4-109588	FLAT 6 VIE L.1100mm	FLAT CABLE 6-WAY L.1100mm
45	4-109760	FLAT 4 VIE L.2200mm	FLAT CABLE 4-WAY L.2200mm

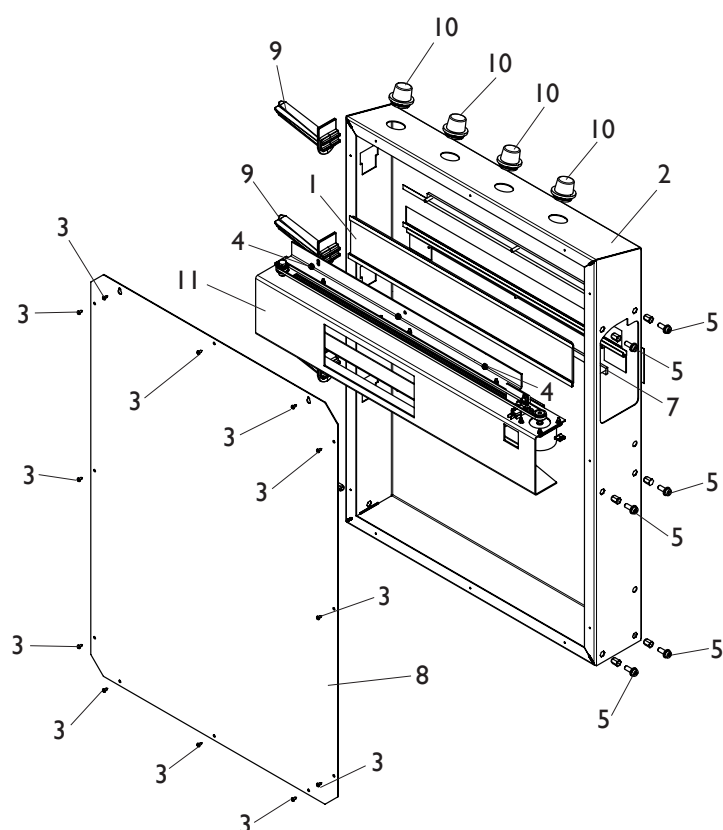
KIT RILEVATORE POSTERIORE EYELIGHT-EM9980

EYELIGHT-EM9980 REAR DETECTOR KIT

**VISTA ANTERIORE
FRONT VIEW**

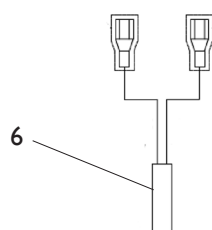
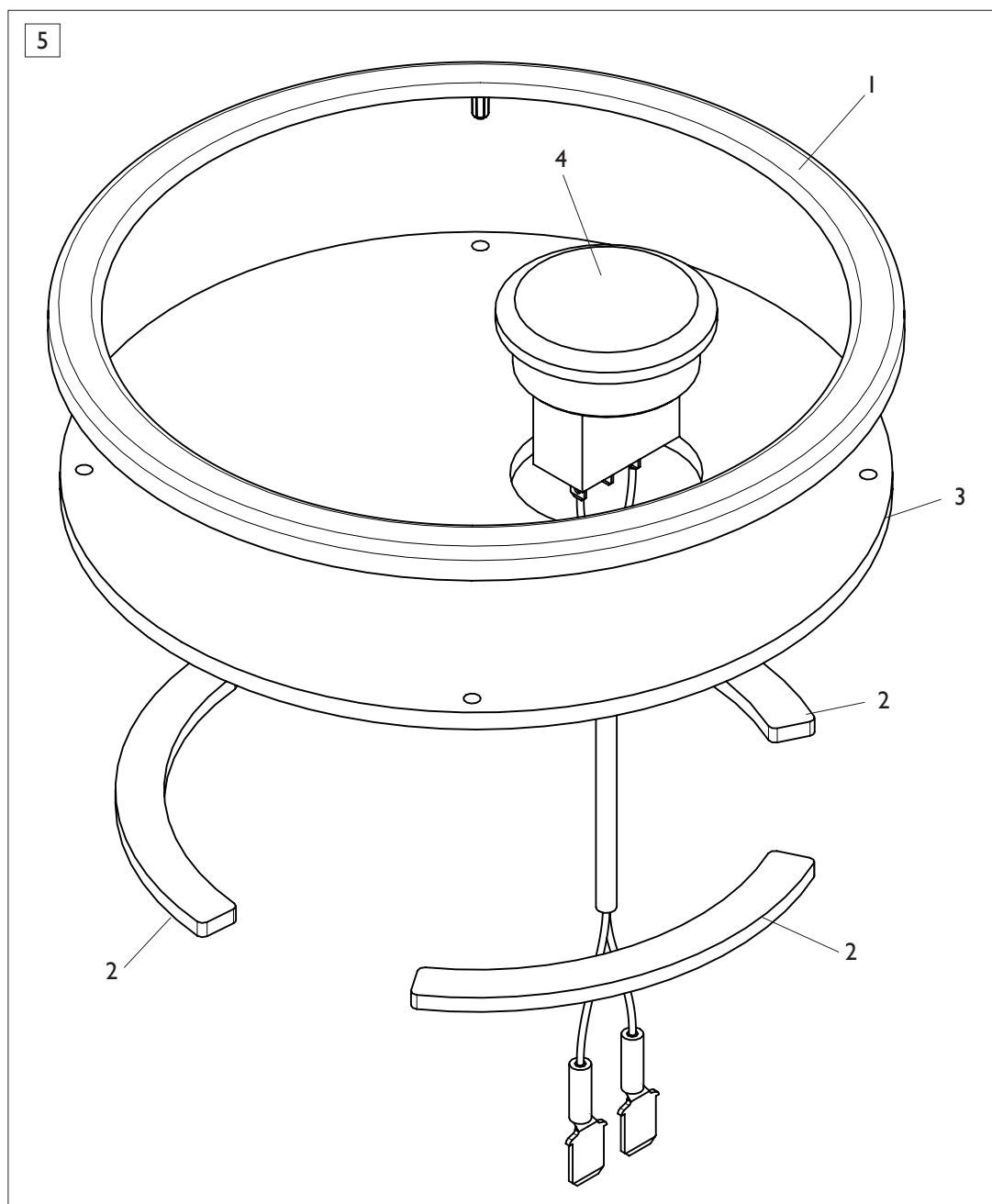


**VISTA POSTERIORE
REAR VIEW**



Rif. Ref.	Codice Code	Descrizione	Description
1	5-120049	VETRO	GLASS
2	5-120050/90	PANNELLO CON ADESIVO EYELIGHT	PANEL WITH LABEL EYELIGHT
2	5-120050/16	PANNELLO CON ADESIVO EM9980	PANEL WITH LABEL EM9980
3	2-80171	VTBIC D.3,9X9,5	ROUNDED HEAD SCREW CROSS CUT D.3,9X9,5
4	2-01979	DADO ES.B.A. M6	LOW AUTOLOCKING HEXAGON NUT M6
5	457693	VTCEI FLANGIATA M8X20	CIRCULAR SOCKET HEAD SCREW M8X20
6	2-02147	VTBEI M6X20	ROUNDED HEAD SCREW SOCKET M6X20
7	4-117163	PIASTRA DISTANZIALE	SPACER PLATE
8	4-117164/90	PANNELLO POSTERIORE EYELIGHT	REAR PANEL EYELIGHT
8	4-117164/16	PANNELLO POSTERIORE EM9980	REAR PANEL EM9980
9	438319	PORTAFLANGIA A SLITTA	SLIDING HOLDER FLANGE
10	441224	PORTACONO AD INCASTRO	CONE HOLDER INTERLOCKING
11	5-120047	RILEVATORE POSTERIORE	REAR DETECTOR

TASTIERA ONE TOUCH EYELIGHT-EM9980 EYELIGHT-EM9980 ONE TOUCH KEYBOARD

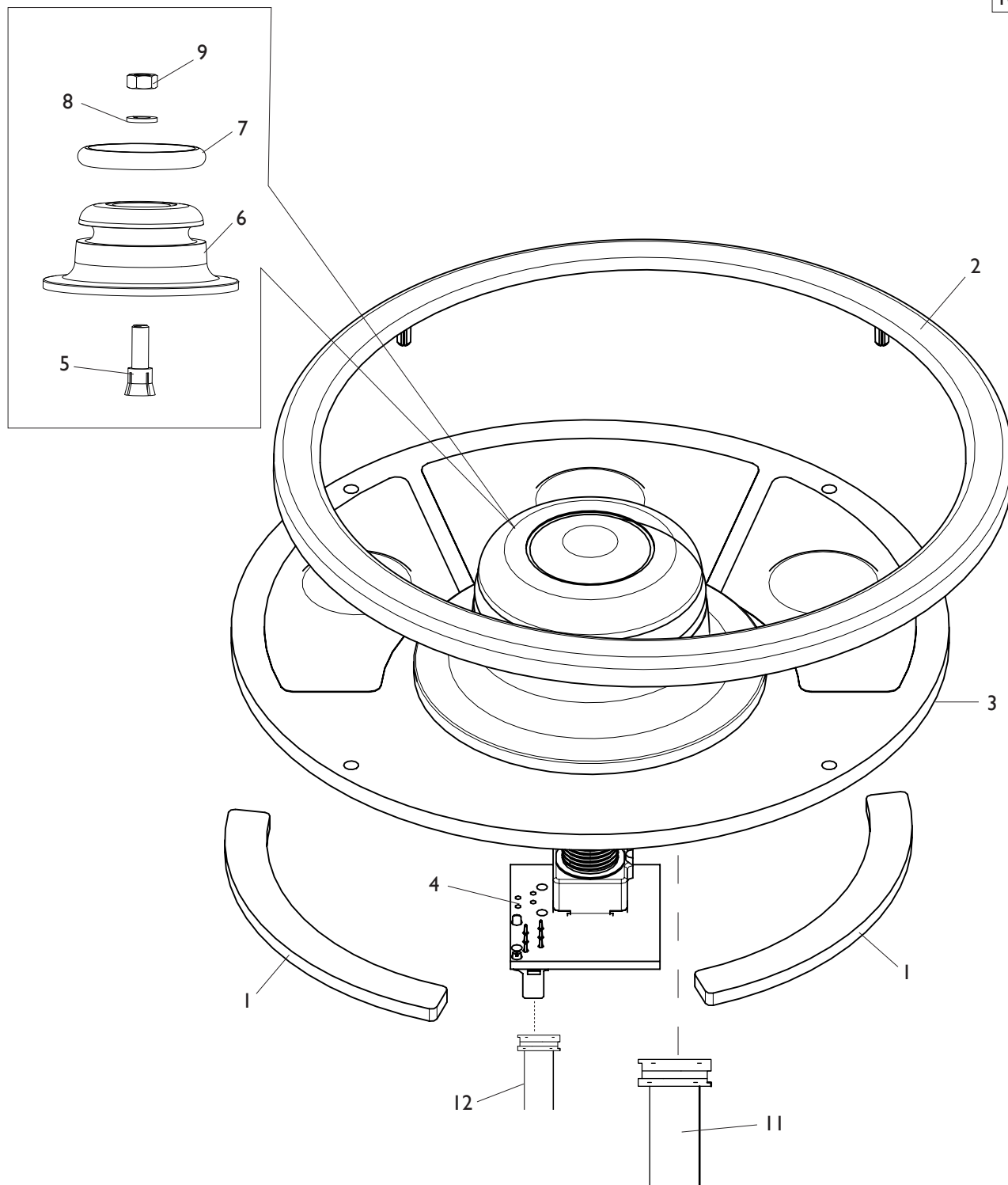


Rif. Ref.	Codice Code	Descrizione	Description
1	4-105569	CORNICE CIRCOLARE	FRAME IT CIRCULAR
2	4-117842	SETTORE ADESIVO DUAL-LOCK	LABEL DUAL-LOCK
3	4-117881	DISCO SUPPORTO	SUPPORT DISC
4	5-106276	KIT PULSANTE CON CAVO	BUTTON KIT WITH CABLE
5	5-120051	TASTIERA ONE TOUCH	ONE TOUCH KEYBOARD
6	4-118111	CAVO 2P L.1100mm EYELIGHT	CABLE 2P L.1100mm EYELIGHT
6	4-118689	CAVO 2P L.1100mm EM9980	CABLE 2P L.1100mm EM9980

TASTIERA KISS EM9580-EM9550

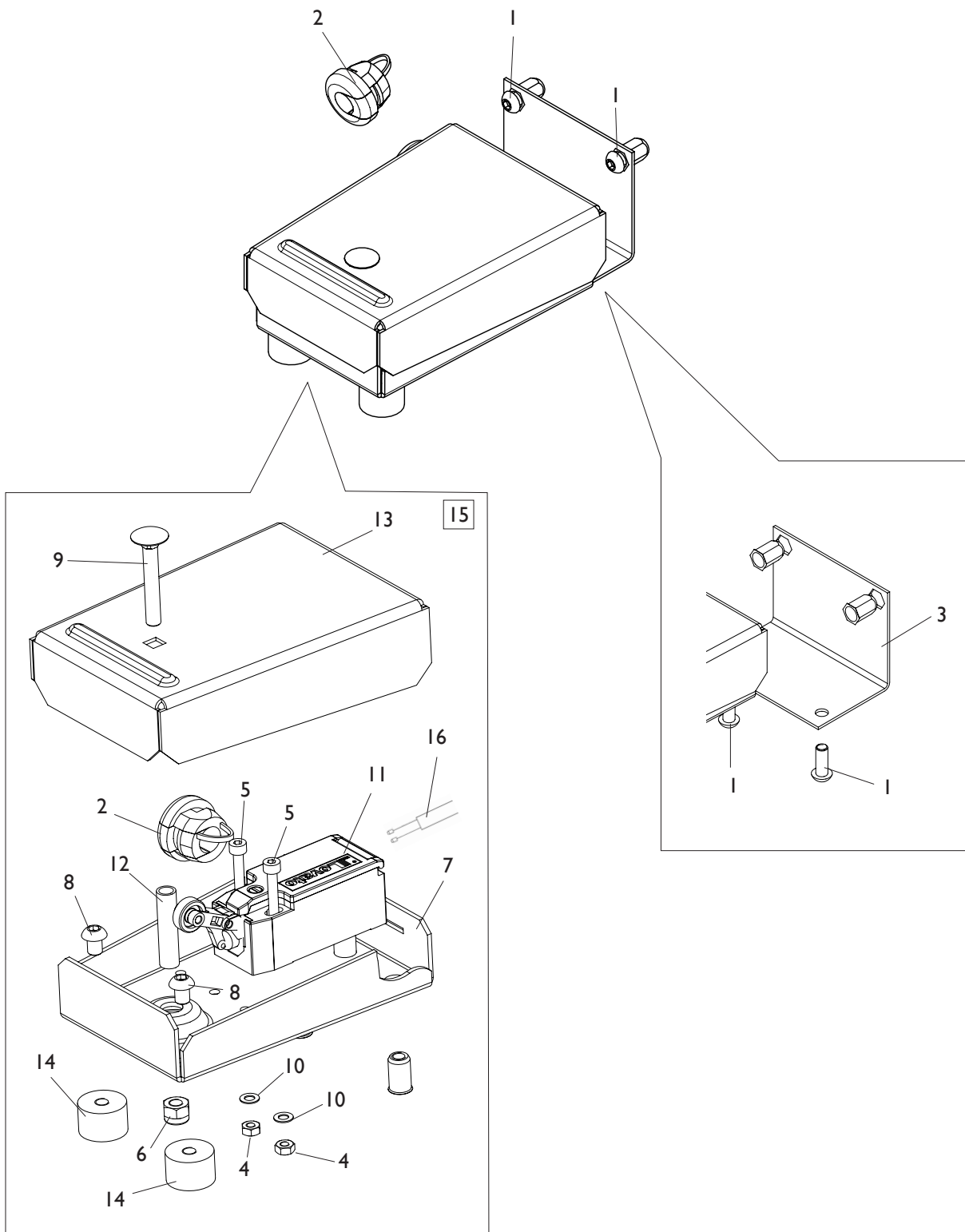
EM9580-EM9550 KISS KEYBOARD

10



Rif. Ref.	Codice Code	Descrizione	Description
1	4-117842	SETTORE ADESIVO DUAL-LOCK	LABEL DUAL-LOCK
2	4-105569	CORNICE CIRCOLARE	FRAME IT CIRCULAR
3	4-115861	TASTIERA PER KISS	KISS KEYBOARD
4	4-115913	SK ENCODER	ENCODER BOARD
5	33014602	CONO DI SERRAGGIO	CONE LOCKING
6	4-117840	MANOPOLA KISS	KISS HANDLE
7	3-02871	OR D.27,94X5,34	O-RING D.27,94X5,34
8	2-00204	ROSETTA D.5	WASHER D.5
9	2-00144	DADO ES.N. M5	NORMAL HEXAGON NUT M5
10	5-120052	TASTIERA KISS	KISS KEYBOARD
11	4-104684	FLAT 16 VIE L.1400mm	FLAT CABLE 16-WAY L.1400mm
12	4-101097	FLAT 6 VIE L.160mm	FLAT CABLE 6-WAY L.160mm

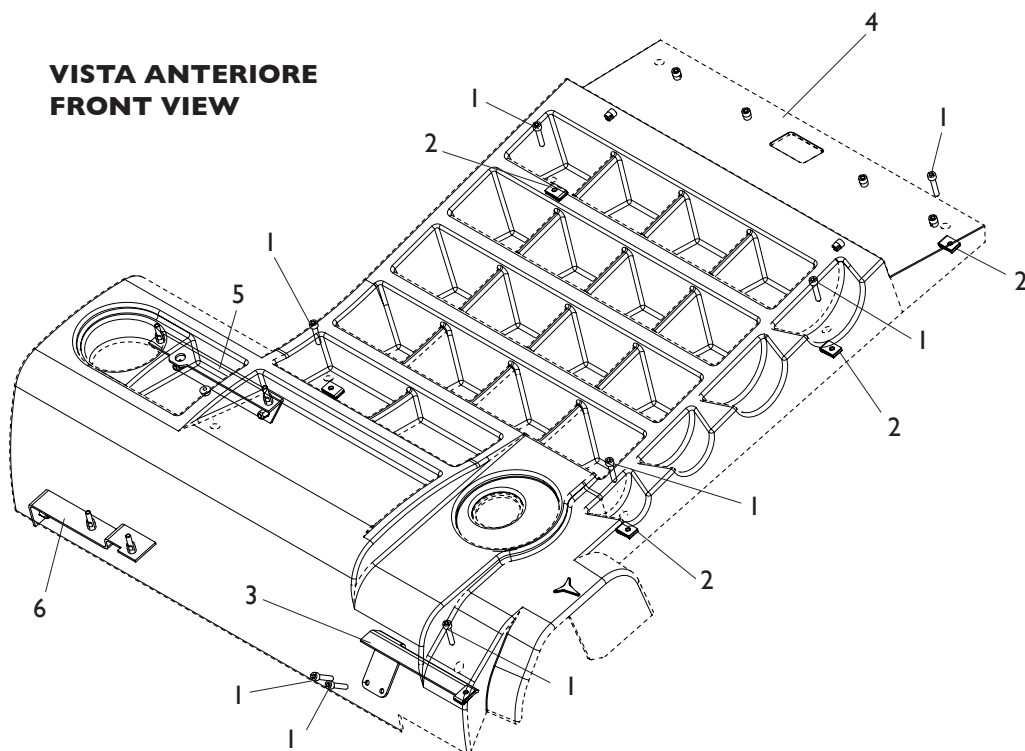
PEDALE EC EC PEDAL



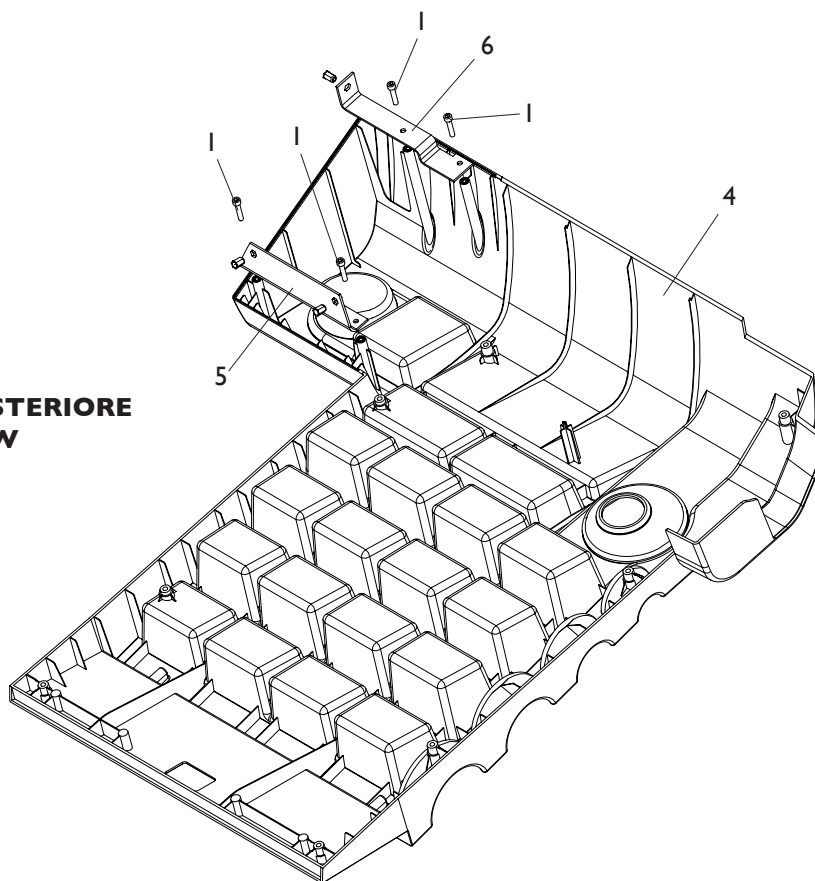
Rif. Ref.	Codice Code	Descrizione	Description
1	2-02155	VTBEI M6X16	ROUNDED HEAD SCREW SOCKET M6X16
2	461234	PRESSACAVO	PRESSACAVO
3	5-120053	ATTACCO PEDALE	PEDAL CONNECTION
4	2-00149	DADO ES.N. M4	NORMAL HEXAGON NUT M4
5	2-00735	VTCEI 1/2F M4X30	CIRCULAR SOCKET HEAD SCREW 1/2F M4X30
6	2-01257	DADO ES.N.A. M6	NORMAL AUTOLOCKING HEXAGON NUT M6
7	5-120054	LAMIERA INFERIORE	LOWER PLATE
8	2-02151	VTBEI M6X8	ROUNDED HEAD SCREW SOCKET M6X8
9	2-03493	VTTL 1/2F M6X40	SCREW 1/2F M6X40
10	2-71541	ROSETTA D.4	WASHER D.4
11	4-105962	MICRO 10A	MCRO 10A
12	4-105974	TUBO D8X1 L.34mm	HOSE D.8X1 L.34mm
13	4-117194	LAMIERA SUPERIORE	UPPER PLATE
14	441675	ANTIVIBRANTE 20X13 M6X6	ANTIVIBRATION 20X13 M6X6
15	5-105658	PEDALE CON STAFFA	PEDAL WITH PLATE
16	4-117894	CAVO 2X1 L.1500mm	CABLE 2X1 L.1500mm

COPERCHIO PORTAPESI EYELIGHT EYELIGHT COVER WEIGHT HOLDERS

**VISTA ANTERIORE
FRONT VIEW**



**VISTA POSTERIORE
REAR VIEW**

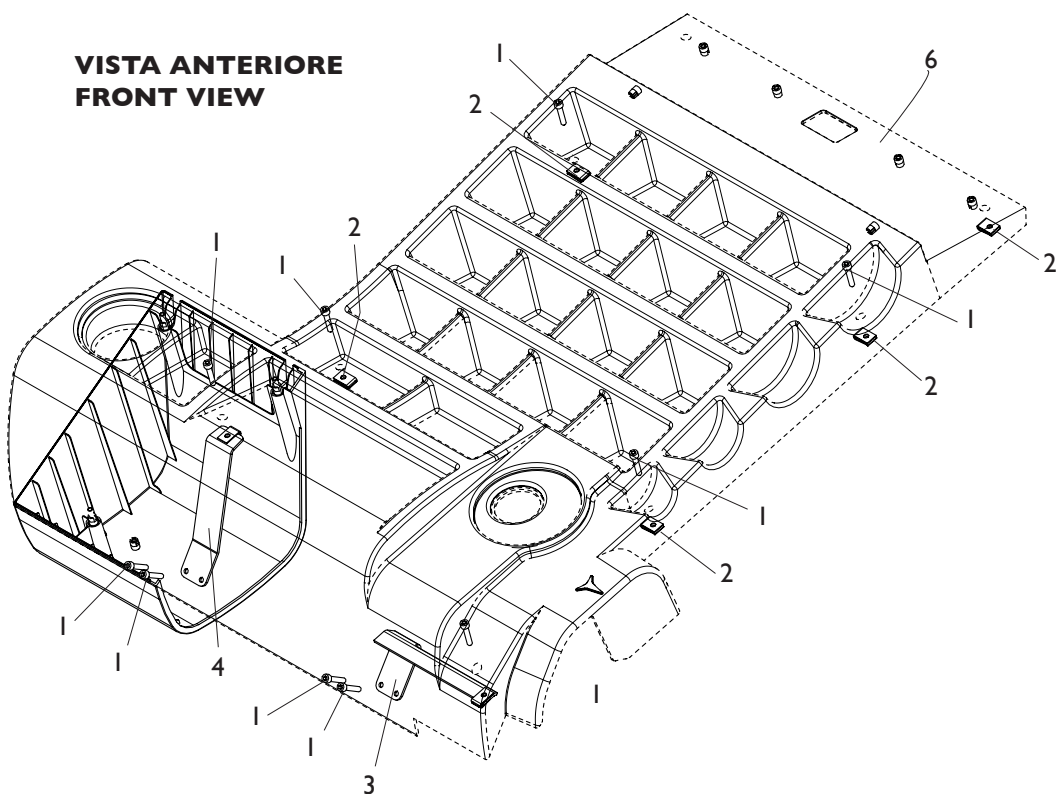


Rif. Ref.	Codice Code	Descrizione	Description
1	2-00863	VTCEI M6X30	CIRCULAR SOCKET HEAD SCREW M6X30
2	4-100615	INSERTO M6	INSERT M6
3	4-117496	STAFFA ANTERIORE	FRONT PLATE
4	4-116189	COPERCHIO PORTAPESI	COVER WEIGHT TRAY
5	5-120055	STAFFA COPERCHIO PORTAPESI	BRACKET COVER WEIGHT HOLDERS
6	5-120056	STAFFA SX COPERCHIO PORTAPESI	BRACKET LEFT COVER WEIGHT HOLDERS

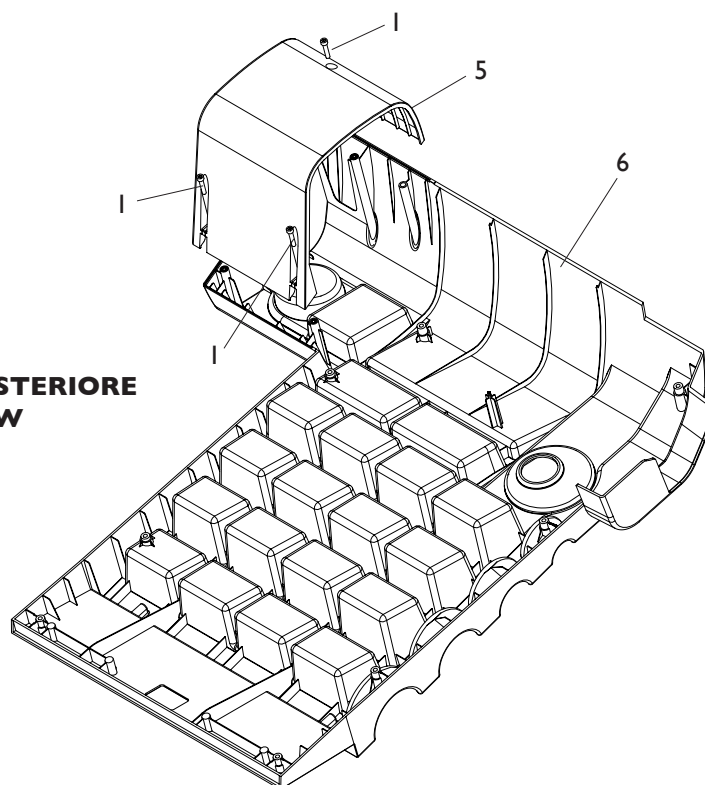
COPERCHIO PORTAPESI EM9980

EM9980 COVER WEIGHT HOLDERS

**VISTA ANTERIORE
FRONT VIEW**



**VISTA POSTERIORE
REAR VIEW**

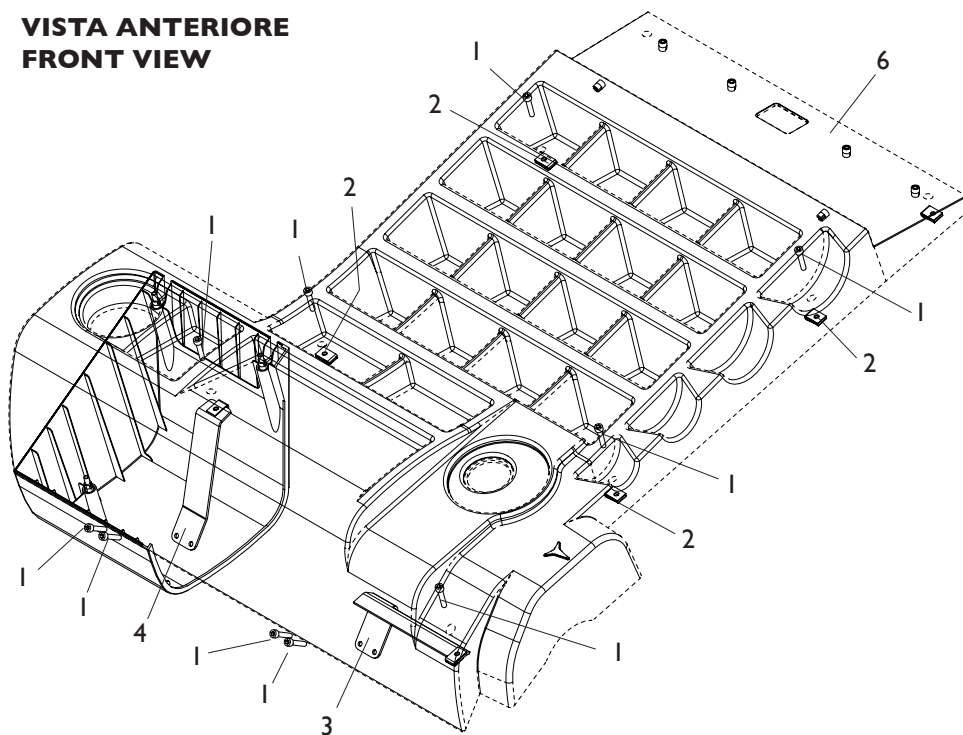


Rif. Ref.	Codice Code	Descrizione	Description
1	2-00863	VTCEI M6X30	CIRCULAR SOCKET HEAD SCREW M6X30
2	4-100615	INSERTO M6	INSERT M6
3	4-117496	STAFFA ANTERIORE	FRONT PLATE
4	4-118655	STAFFA ANTERIORE SX	BRACKET LEFT FRONT
5	4-116188	CARTER INFERIORE	LOWER CARTER
6	4-116189	COPERCHIO PORTAPESI	COVER WEIGHT HOLDERS

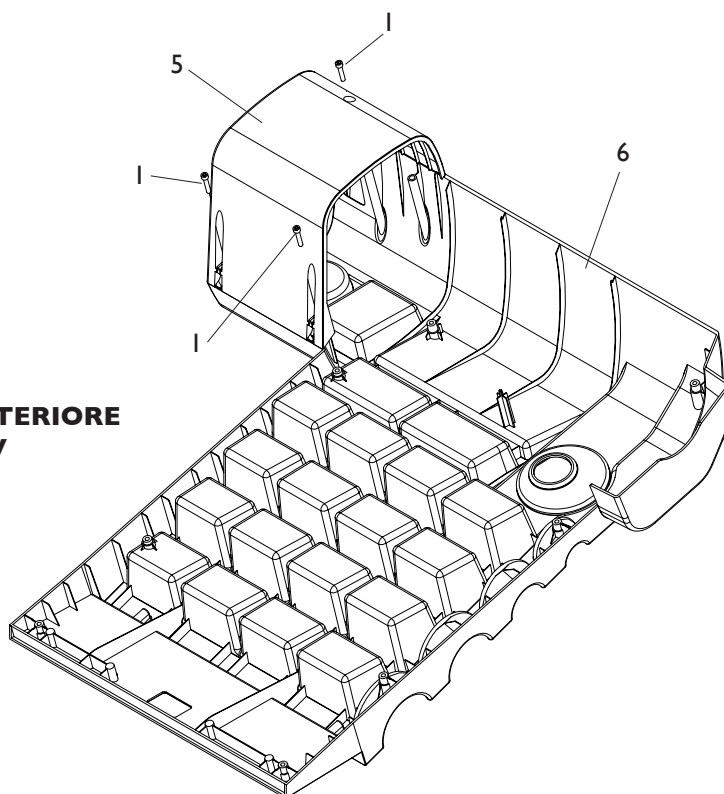
COPERCHIO PORTAPESI EM9580-EM9550

EM9580-EM9550 COVER WEIGHT HOLDERS

VISTA ANTERIORE
FRONT VIEW

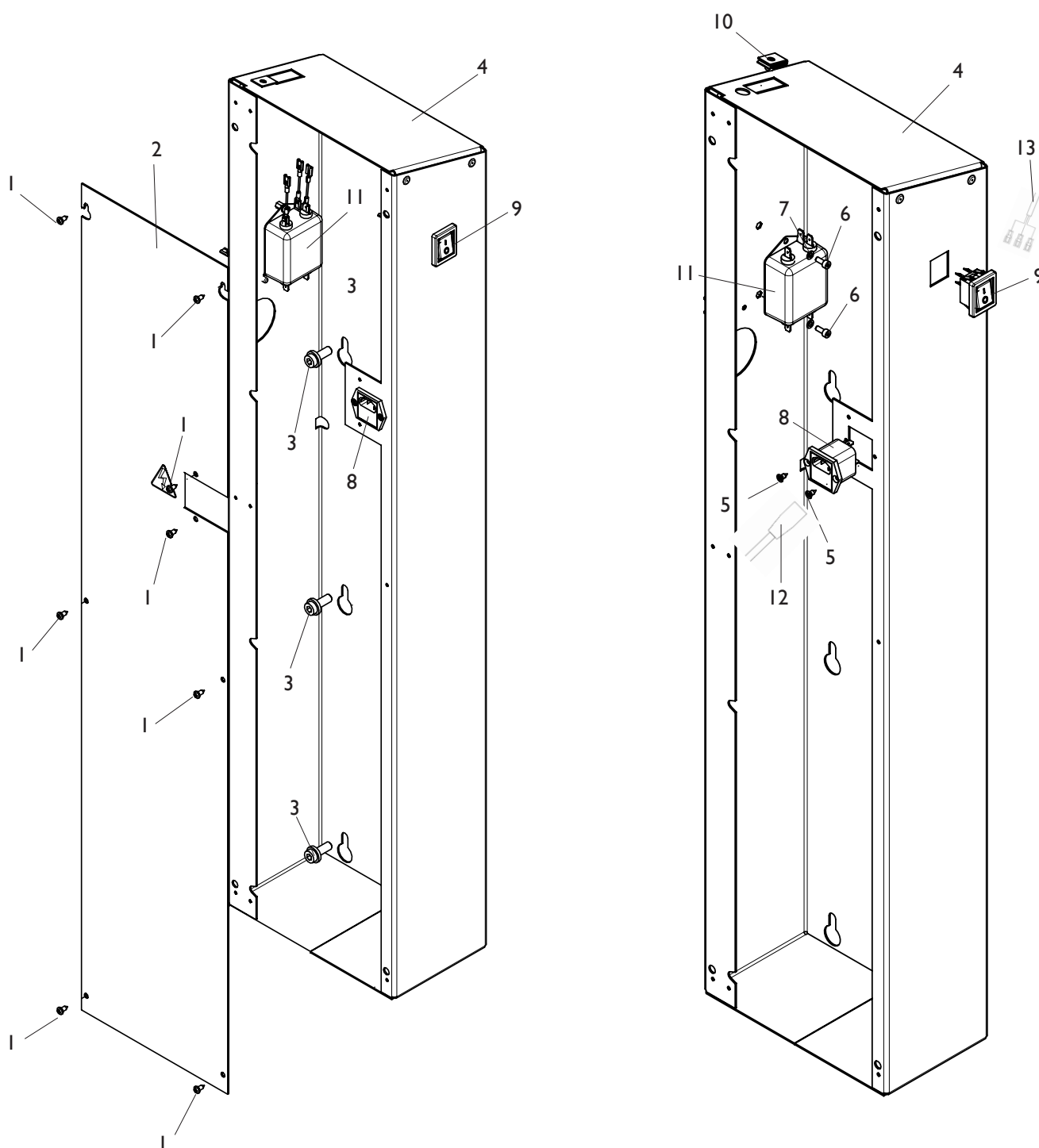


VISTA POSTERIORE
REAR VIEW



Rif. Ref.	Codice Code	Descrizione	Description
1	2-00863	VTCEI M6X30	CIRCULAR SOCKET HEAD SCREW M6X30
2	4-100615	INSERTO M6	INSERT M6
3	4-117496	STAFFA ANTERIORE	FRONT PLATE
4	4-118655	STAFFA ANTERIORE SX	BRACKET LEFT FRONT
5	4-116188	CARTER INFERIORE	LOWER CARTER
6	4-116190	COPERCHIO PORTAPESI	COVER WEIGHT HOLDERS

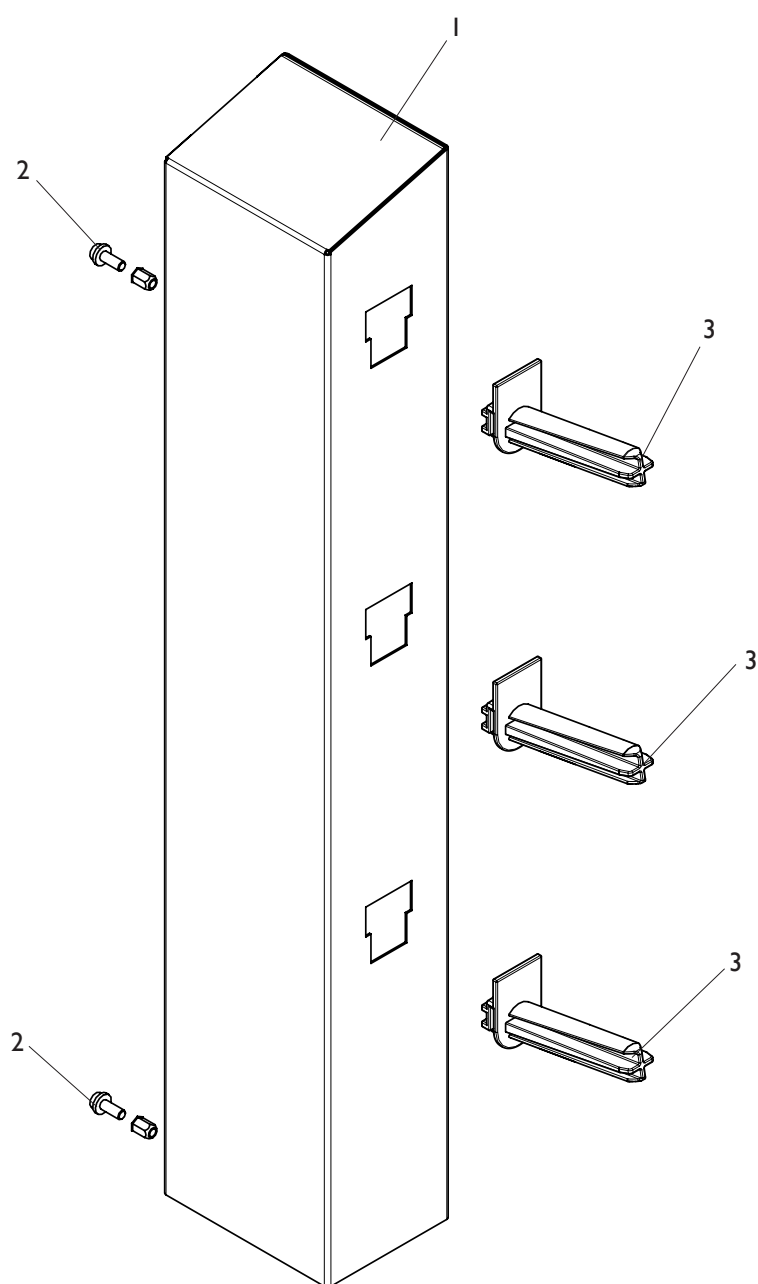
COLONNA POSTERIORE SX REAR LEFT COLUMN



Rif. Ref.	Codice Code	Descrizione	Description
1	2-80171	VATBIC D.3,9X9,5	ROUNDED HEAD SCREW TAPPING CROSS CUT D.3,9X9,5
2	5-120057/90	PANNELLO CHIUSURA EYELIGHT	LOCKING PANEL EYELIGHT
2	5-120057/16	PANNELLO CHIUSURA EM9980-9580-9550	LOCKING PANEL EM9980-9580-9550
3	457693	VTCEI FLANGIATA M8X20	CIRCULAR SOCKET HEAD SCREW M8X20
4	5-120058/90	COLONNA POSTERIORE EYELIGHT	REAR COLUMN EYELIGHT
4	5-120058/16	COLONNA POSTERIORE EM9980-9580-9550	REAR COLUMN EM9980-9580-9550
5	2-01945	VATSPIC D.3,9X9,5	TAPPING SCREW PLAT SOCKET CSK D.3,9X9,5
6	2-02080	VTCEI M4X10	CIRCULAR SOCKET HEAD SCREW M4X10
7	2-03363	ROSETTA D.4	WASHER D.4
8	3-02943	SPINA BIPOLARE 10A-250V	BIPOLAR PLUG 10A-250V
9	3-02944	INTERRUTTORE BIPOLARE	BIPOLAR SWITCH
10	4-100615	INSERTO M6	INSERT M6
11	448914	FILTRO RETE 115/250V 6A	FILTER 115/250V 6A
12	3-01943	CAVO RETE 2-2,5MT	FIDING CABLE 2-2,5MT
13	4-117898	CAVO ALIMENTAZIONE F. PRESA VDE	VDE POWER CABLE

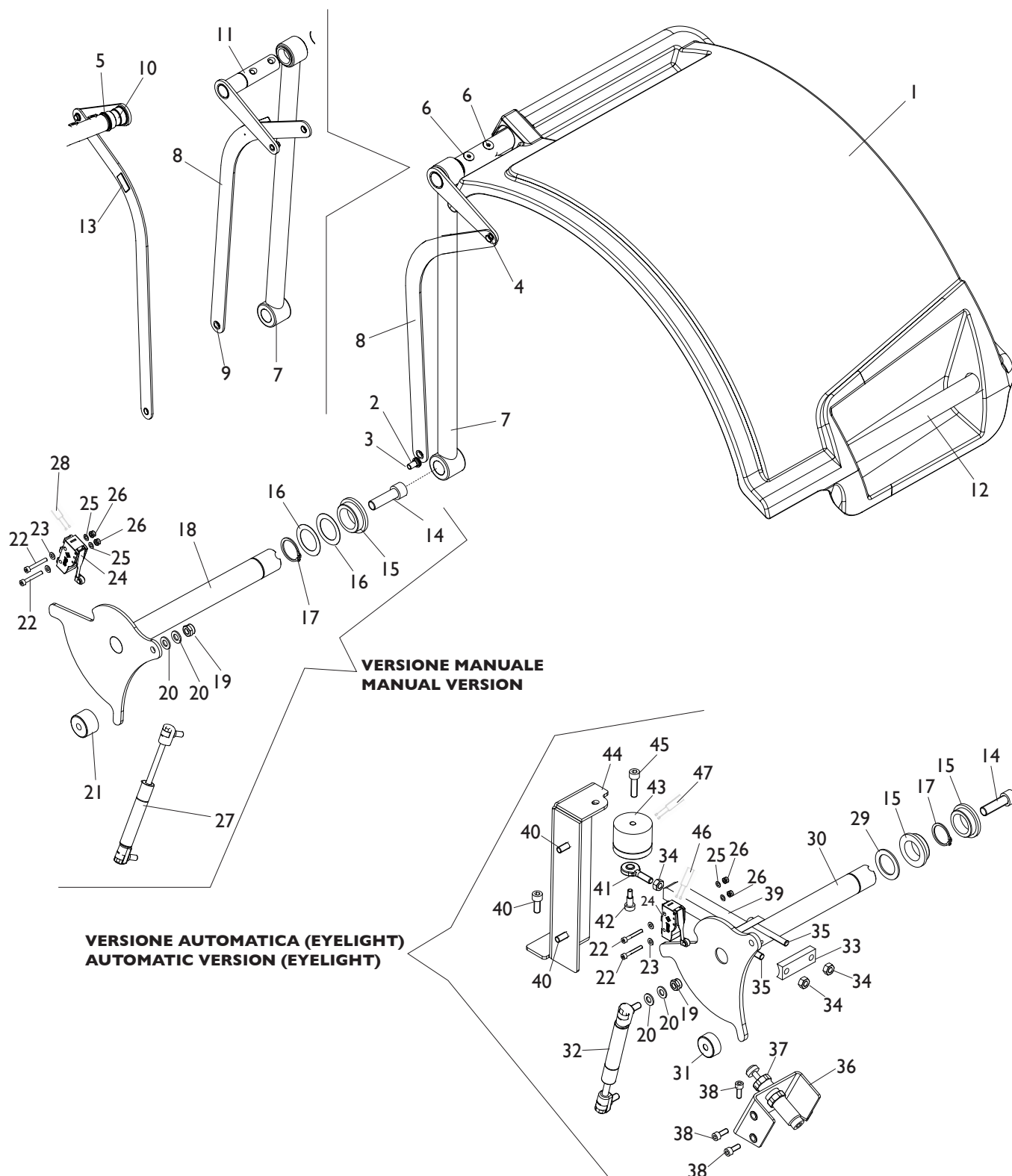
COLONNA POSTERIORE DX EM9580-EM9550

EM9580-EM9550 RIGHT REAR COLUMN



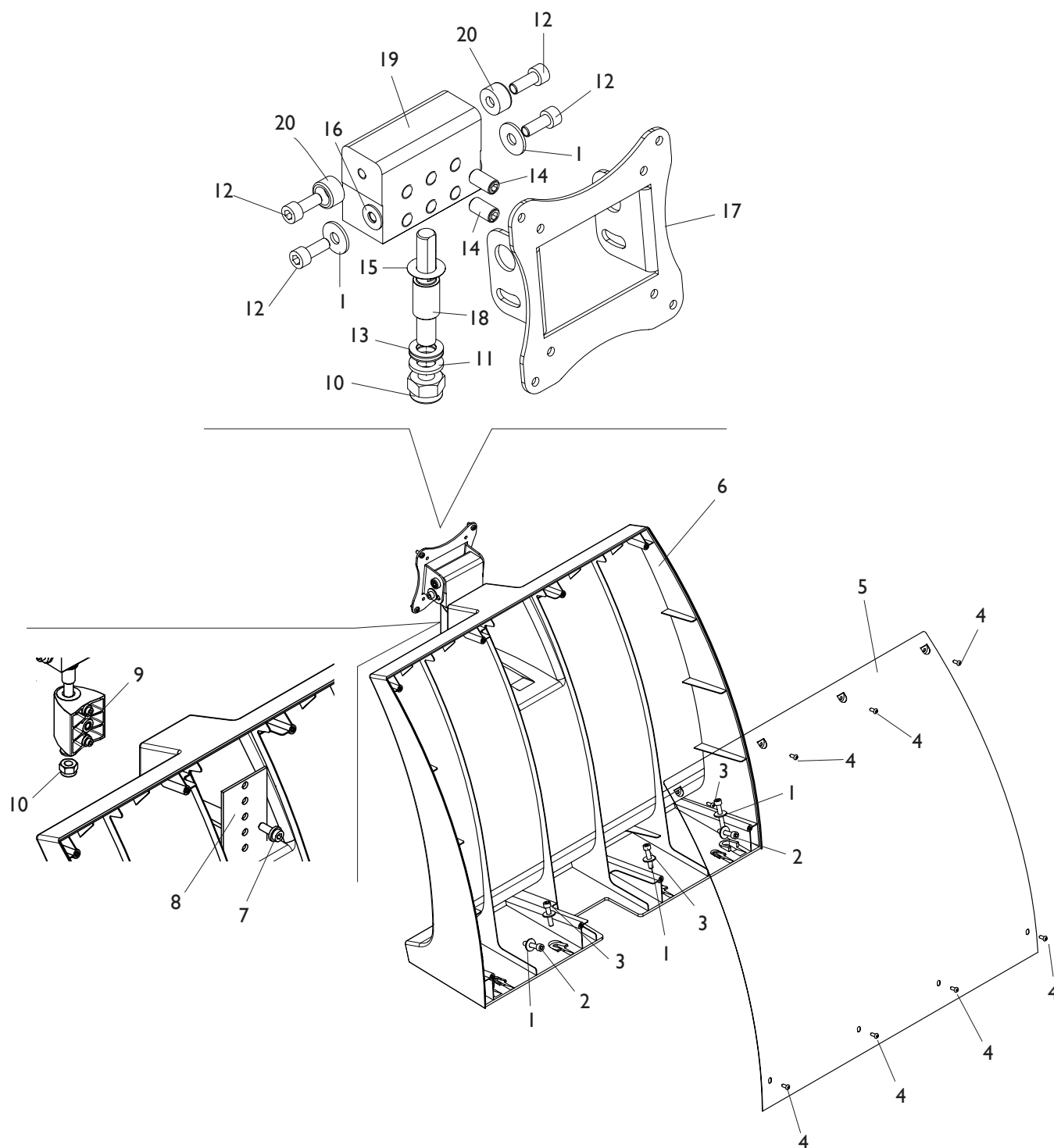
Rif. Ref.	Codice Code	Descrizione	Description
1	5-120059	COLONNA POSTERIORE DX	RIGHT REAR COLUMN
2	457693	VTCEI FLANGIATA M8X20	CIRCULAR SOCKET HEAD SCREW M8X20
3	438319	PORTAFLANGIA A SLITTA	SLIDING HOLDER FLANGE

GRUPPO PROTEZIONE PROTECTION GROUP



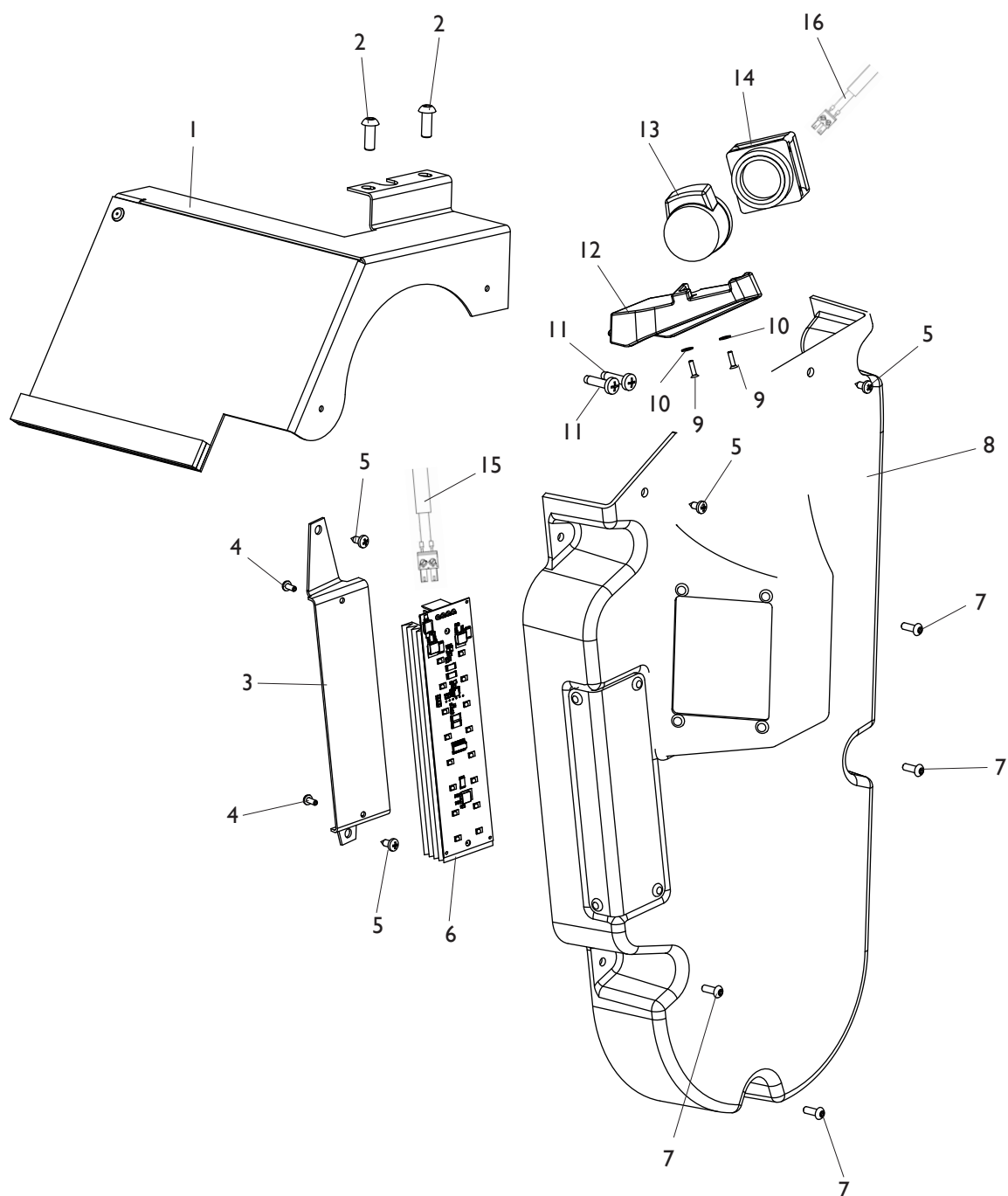
Rif. Ref.	Codice Code	Descrizione	Description
1	4-105459	PROTEZIONE RUOTA 44"	WHEEL PROTECTION 44"
2	3-02954	RONDELLA D.13X18X2	WASHER D.13X18X2
3	447047	VITE SPECIALE D.12X16 M10	SPECIAL SCREW D.12X16 M10
4	2-00025	SEEGER D.12	SEEGER D.12
5	2-01068	SEEGER D.32	SEEGER D.32
6	2-02639	VTSPei M10X30	CSK SCREW FLAT SOCKET M10X30
7	4-117845	TUBO INTERNO PROTEZIONE	INNER TUBE PROTECTION
8	4-117849	CEDENTE	TRANSFEROR
9	4-117850	BOCCOLA CLIP D.12	BUSH CLIP D.12
10	4-117851	BOCCOLA D.36	BUSH D.36
11	4-117863	BIELLA PROTEZIONE	ROD PROTECTION
12	5-105923	TUBO ESTERNO PROTEZIONE	EXTERNAL TUBE PROTECTION
13	4-405091	TAPPO PORTA USB	USB PLUG
14	2-03001	VTCEI M12X40	CIRCULAR SOCKET HEAD SCREW M12X40
15	433637	BOCCOLA	BUSH
16	436721	RONDELLA D.29X42X0,5	WASHER D.29X42X0,5
17	2-01110	SEEGER D.28	SEEGER D.28
18	4-117884	PERNO PROTEZIONE	PROTECTION PIN
19	2-01137	DADO ES.B.A M8	LOW AUTOLOCKING HEXAGON NUT M8
20	2-00212	RONDELLA D.8	WASHER D.8
21	383372	FERMO SCORREVOLE	SLIDING STOP
22	2-02078	VTCEI 1/2F M4X30	CIRCULAR SOCKET HEAD SCREW 1/2F M4X30
23	2-00209	RONDELLA D.4	WASHER D.4
24	4-109005	MICRO I6A	MICRO I6A
25	2-00196	RONDELLA D.4	WASHER D.4
26	2-02883	DADOES.B.A. M4	LOW AUTOLOCKING HEXAGON NUT M4
27	4-104977	MOLLA GAS	GAS SPRING
28	4-117896	CAVO 2P L.700mm	CABLE 2P L.700mm
29	4-109006	RONDELLA D.28,5X42X2	WASHER D.28,5X42X2
30	4-130290	CAMMA PROTEZIONE AUTOMATICA	AUTOMATIC PROTECTION PIN
31	4-118425	FERMO SCORREVOLE	SLIDING STOP
32	4-130275	MOLLA GAS	GAS SPRING
33	4-130294	STAFFA COLLEGAMENTO PERNO	BRACKET
34	2-00723	DADO ES.N. M8	NORMAL HEXAGON NUT M8
35	2-01148	VTCEI 1/2F M8X60	CIRCULAR SOCKET HEAD SCREW 1/2F M8X60
36	5-120107	SUPPORTO DECELERATORE	SUPPORT
37	3-10010	DECELERATORE	DECELERATOR
38	2-00309	VTCEI M6X16	CIRCULAR SOCKET HEAD SCREW M6X16
39	4-130291	SUPPORTO PIATTELLO	SUPPORT
40	2-01205	VTCEI M8X20	CIRCULAR SOCKET HEAD SCREW M8X20
41	2-03391	TERMINALE FILETTATO	THREADED TERMINAL
42	2-03096	VITE SPALLAMENTO 8X12 M6	SPECIAL SCREW 8X12 M6
43	5-120100	ELETTROMAGNETE	ELECTROMAGNET
44	4-130298	STAFFA SUPPORTO ELETTROCALAMITA	SUPPORT BRACKET
45	2-00322	VTCEI M8X30	CIRCULAR SOCKET HEAD SCREW M8X30
46	4-118111	CAVO 2P L.1100mm	CABLE 2P L.1100mm
47	4-130327	CAVO ELETTROMAGNETE	ELECTROMAGNET CABLE

GRUPPO TESTATA GROUP HEAD



Rif. Ref.	Codice Code	Descrizione	Description
1	2-00679	RONDELLA D.6,6X18X1,6	WASHER D.6,6X18X1,6
2	2-00863	VTCEI M6X30	CIRCULAR SOCKET HEAD SCREW M6X30
3	2-00947	VTCEI 1/2F M6X50	CIRCULAR SOCKET HEAD SCREW 1/2 M6X50
4	2-02145	VTBEI M4X10	ROUNDED HEAD SCREW SOCKET M4X10
5	4-118214	CARTER SUPPROTO TESTATA	CARTER HEAD SUPPORT
6	4-116187	SUPPORTO TESTATA	HEAD SUPPORT
7	457693	VTCEI FLANGIATA M8X20	CIRCULAR SOCKET HEAD SCREWM8X20
8	4-118215	PIASTRA	PLATE
9	4-105400	BLOCCHETTO	BLOCK
10	2-01019	DADO ES.N.A. M10	NORMAL AUTOLOCKING HEXAGON NUT M10
11	2-02067	RONDELLA D.10	WASHER D.10
12	2-02378	VTCEI M6X16	CIRCULAR SOCKET HEAD SCREW M6X16
13	2-02993	ROSETTA D.10	WASHER D.10
14	2-71768	VSTEI M8X16	CSK SCREW ROUND SOCKET M8X16
15	310842	RONDELLA D.10,25X20X0,3	WASHER D.10,25X20X0,3
16	3-01756	RONDELLA D.6,2X14X1	WASHER D.6,2X14X1
17	4-111291	PIASTRA MONITOR	MONITOR PLATE
18	4-118828	PERNO VERTICALE	VERTICAL PIN
19	4-118829	CORPO SNODO	BODY JOINT
20	4-118830	BOCCOLA FULCRO SNODO	BUSHING FULCRUM JOINT

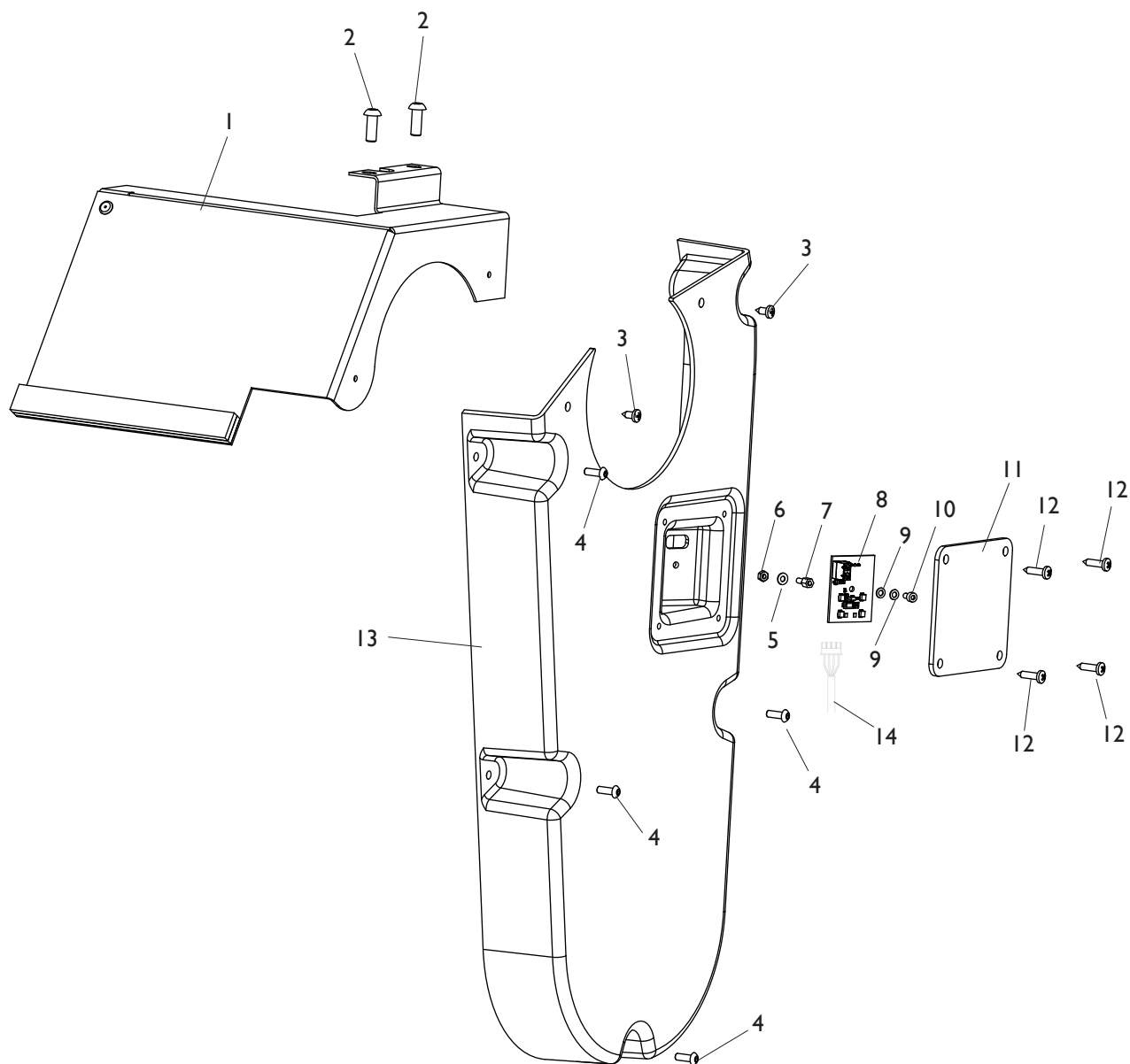
GRUPPO ILLUMINATORE EYELIGHT EYELIGHT GROUP ILLUMINATOR



Rif. Ref.	Codice Code	Descrizione	Description
1	5-120060	CARTER PROTEZIONE	PROTECTION CARTER
2	2-02155	VTBEI M6X16	ROUNDED HEAD SCREW SOCKET M6X16
3	4-118275	SUPPORTO ILLUMINATORE	ILLUMINATOR SUPPORT
4	463632	VATBIC FLANGIATA M3X8	ROUNDED HEAD SCREW TAPPING CORSS CUT M3X8
5	2-80171	VATBIC D.3,9X9,5	ROUNDED HEAD SCREW TAPPING CROSS CUT D.3,9X9,5
6	5-104879	SK FLASH-DRV	FLASH-DRV BOARD
7	2-02146	VTBEI M4X12	ROUNDED HEAD SCREW SOCKET M4X12
8	5-106037	ILLUMINATORE +TCAM	ILLUMINATOR
9	2-02965	VATSPIC M2,5X10	TAPPING SCREW PLAT SOCKET CSK M2,5X10
10	2-00208	RONDELLA D.3	WASHER D.3
11	2-03103	VATCCIC M5X20	SCREW TAPPING HEAD CUTTING CIRCULAR CROSS M5X20
12	4-107147	SUPPORTO TELECAMERA	CAMERA SUPPORT
13	4-107146	OTTICA	OPTICAL
14	4-107145	TELECAMERA	CAMERA
15	4-107142	CAVO 4X0,5 L.1000mm	CABLE 4X0,5 L.1000mm
16	4-107148	CAVO TELECAMERA L.1500mm	CAMERA CABLE L.1500mm

GRUPPO ILLUMINATORE EM9980

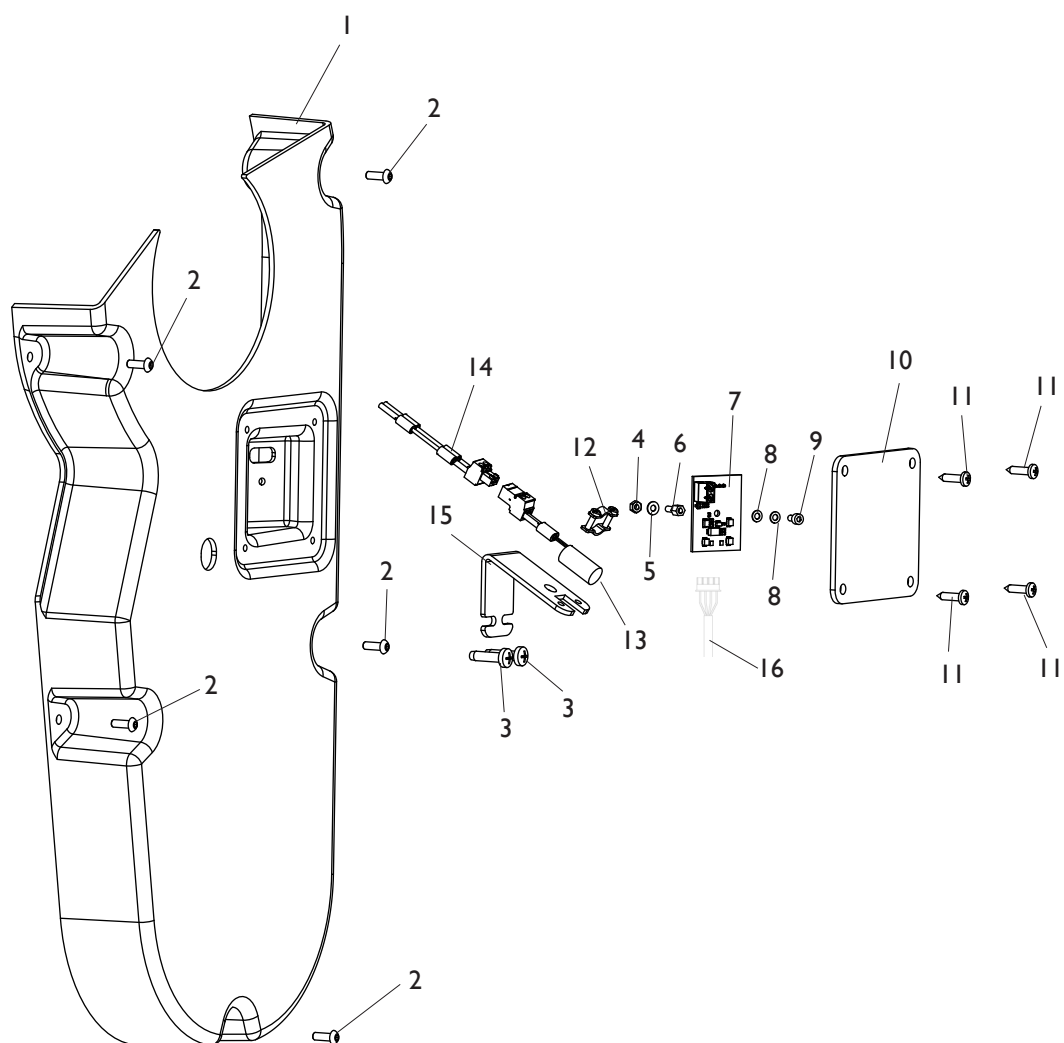
EM9980 GROUP ILLUMINATOR



Rif. Ref.	Codice Code	Descrizione	Description
1	5-120060	CARTER PROTEZIONE	PROTECTION COVER
2	2-02155	VTBEI M6X16	ROUNDED HEAD SCREW SOCKET M6X16
3	2-80171	VATBIC D.3,9X9,5	ROUNDED HEAD SCREW TAPPING CROSS CUT D.3,9X9,5
4	2-02146	VTBEI M4X12	ROUNDED HEAD SCREW SOCKET M4X12
5	2-00208	RONDELLA D.3	WASHER D.3
6	2-00142	DADO ES.N. M3	NORMAL HEXAGON NUT M3
7	436072	DISTANZIALE M3	SPACER M3
8	4-113647	SK ILLUMINATORE	ILLUMINATOR BOARD
9	448482	RONDELLA D.3	WASHER D.3
10	2-00284	VTCEI M3X6	CIRCULAR SOCKET HEAD SCREW M3X6
11	4-116237	PROTEZIONE SK	BOARD PROTECTION
12	2-94134	VATBIC D.3,9X16	ROUNDED HEAD SCREW TAPPING CROSS CUT D.3,9X16
13	4-116235	CARTER	COVER
14	4-113078	CAVO L.2000mm	CABLE L.2000mm

GRUPPO ILLUMINATORE EM9580-EM9550

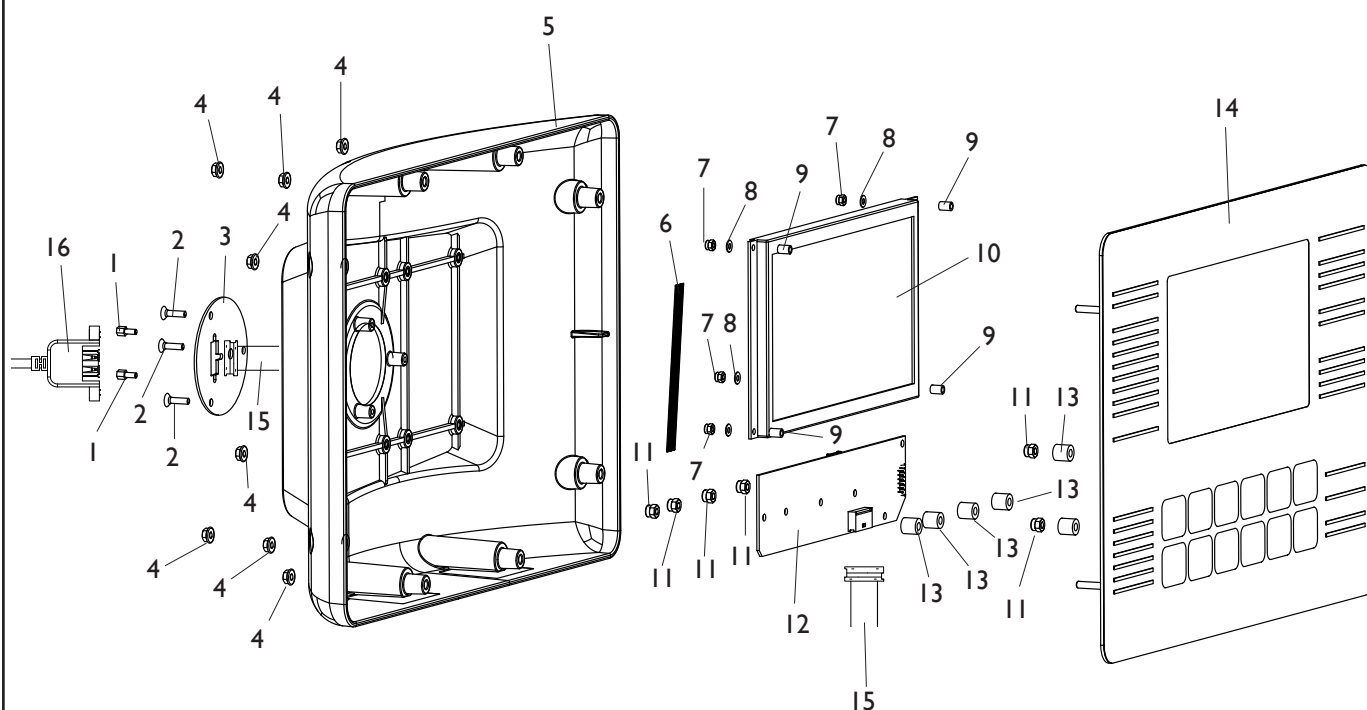
EM9580-EM9550 GROUP ILLUMINATOR



Rif. Ref.	Codice Code	Descrizione	Description
1	5-120061	CARTER	COVER
2	2-02146	VTBEI M4X12	ROUNDED HEAD SCREW SOCKET M4X12
3	2-03103	VATCCIC M5X20	SCREW TAPPING HEAD CUTTING CIRCULAR CROSS M5X20
4	2-00142	DADO ES.N. M3	NORMAL HEXAGON NUT M3
5	2-00208	RONDELLA D.3	WASHER D.3
6	436072	DISTANZIALE M3	SPACER M3
7	4-113647	SK ILLUMINATORE	ILLUMINATOR BOARD
8	448482	RONDELLA D.3	WASHER D.3
9	2-00284	VTCEI M3X6	CIRCULAR SOCKET HEAD SCREW M3X6
10	4-116237	PROTEZIONE SK	BOARD PROTECTION
11	2-94134	VATBIC D.3,9X16	ROUNDED HEAD SCREW TAPPING CROSS CUT D.3,9X16
12	3-02950	CLIP IN METALLO	METAL CLIP
13	5-105928	DIODO LASER	DIODE LASER
14	4-117954	CAVO 2X0,5 2P L.600mm	CABLE 2X0,5 2P L.600mm
15	4-116240	SUPPORTO DIODO	SUPPORT DIODE
16	4-113078	CAVO L.2000mm	CABLE L.2000mm

GRUPPO DISPLAY EM9550

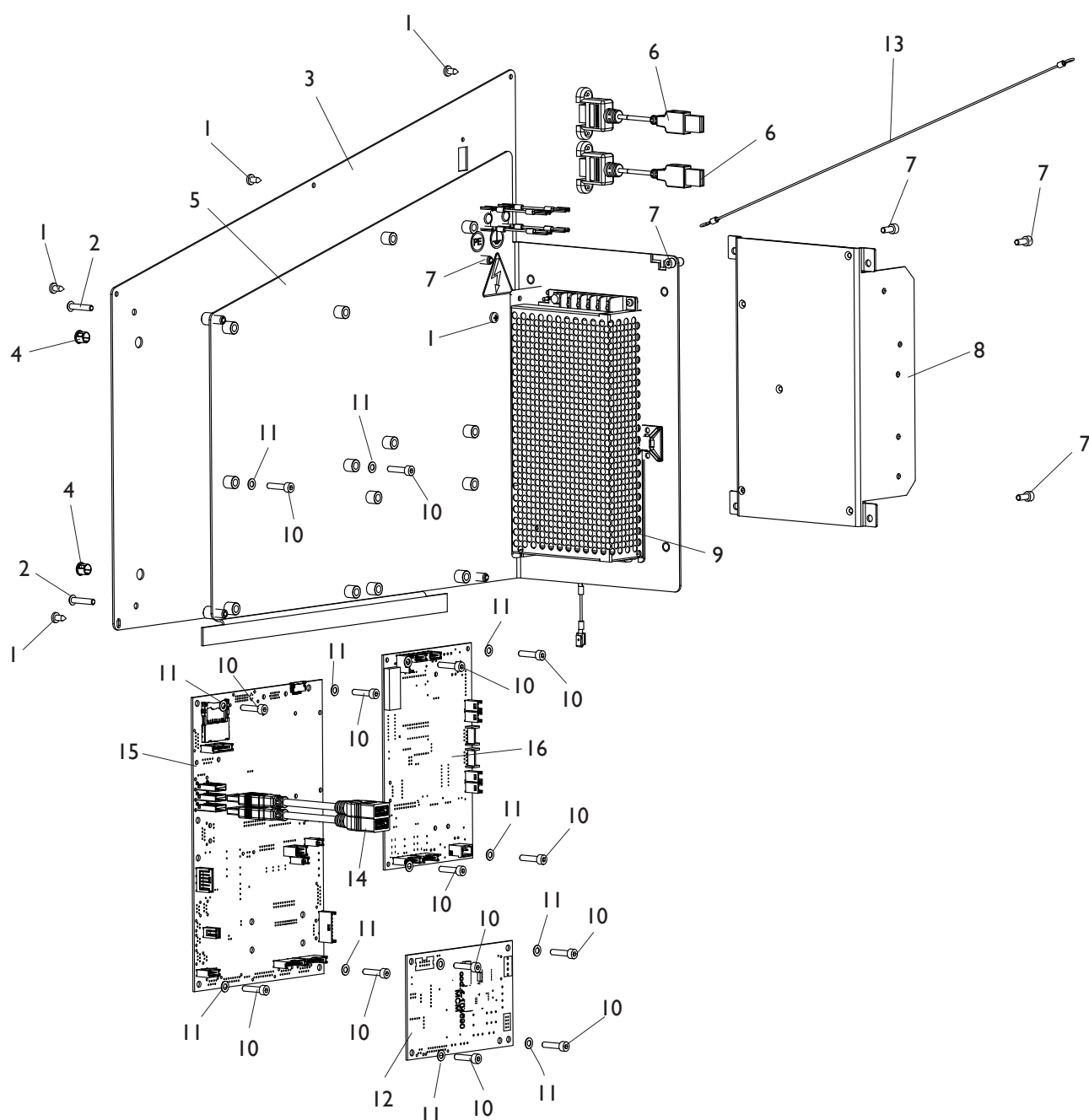
EM9550 DISPLAY GROUP



Rif. Ref.	Codice Code	Descrizione	Description
1	431812	COLONNETTA	COLUMN
2	2-03087	VATSPIC D.3,5X14	TAPPING SCREW CROSS CUT FLAT CSK D.3,5X14
3	4-118213	PIASTRA FISSAGGIO CONN.VASHETTA 9P	PLATE CONNECTOR 9P
4	2-80078	DADO ES.FLANGIATO M4	HEXAGON NUT M4
5	4-118220	TESTATA DISPLAY	DISPLAY HEAD
6	4-118258	FLAT 10VIE L.152mm	FLAT CABLE 10-WAY L.152mm
7	2-01017	DADO ES.N.A. M3	NORMAL AUTOLOCKING HEXAGON NUT M3
8	2-00208	RONDELLA D.3	WASHER D.3
9	33021053	DISTANZIALE	SPACER
10	4-104694	SK VISUALIZZAZIONE LCD	LCD DISPLAY P.C. BOARD
11	2-01018	DADO ES.N.A. M4	NORMAL AUTOLOCKING HEXAGON NUT M4
12	5-103504	SK INTERFACCIA TASTIERA	KEYBOARD INTERFACE P.C. BOARD
13	438996	DISTANZIALE	SPACER
14	4-118120	PANNELLO DISPLAY	DISPLAY PANEL
15	4-106053	FLAT L.300mm	FLAT CABLE L.300mm
16	4-106012	CAVO PROLUNGA A VASH. 9P L.2000mm	EXTENTION CABLE 9P L.2000mm

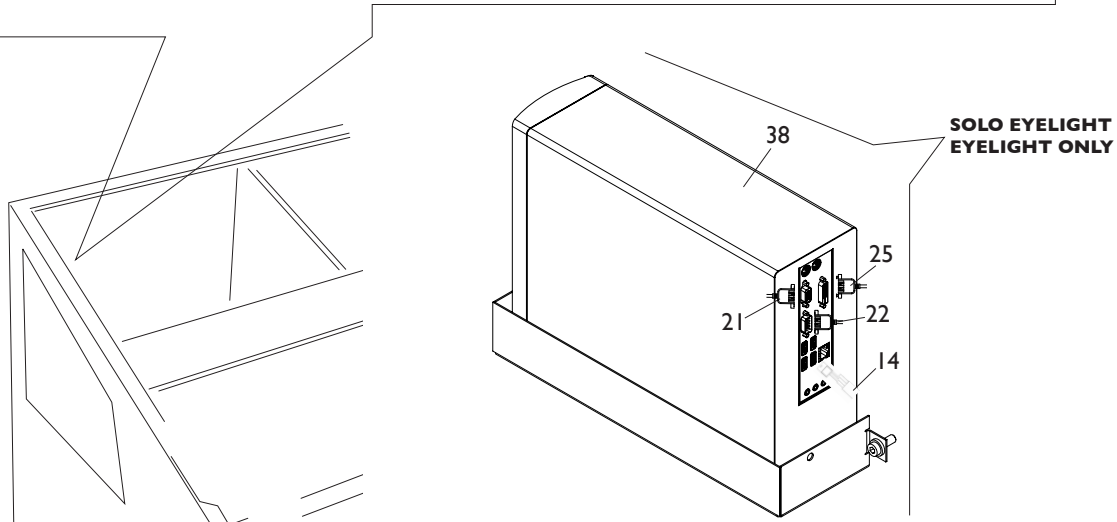
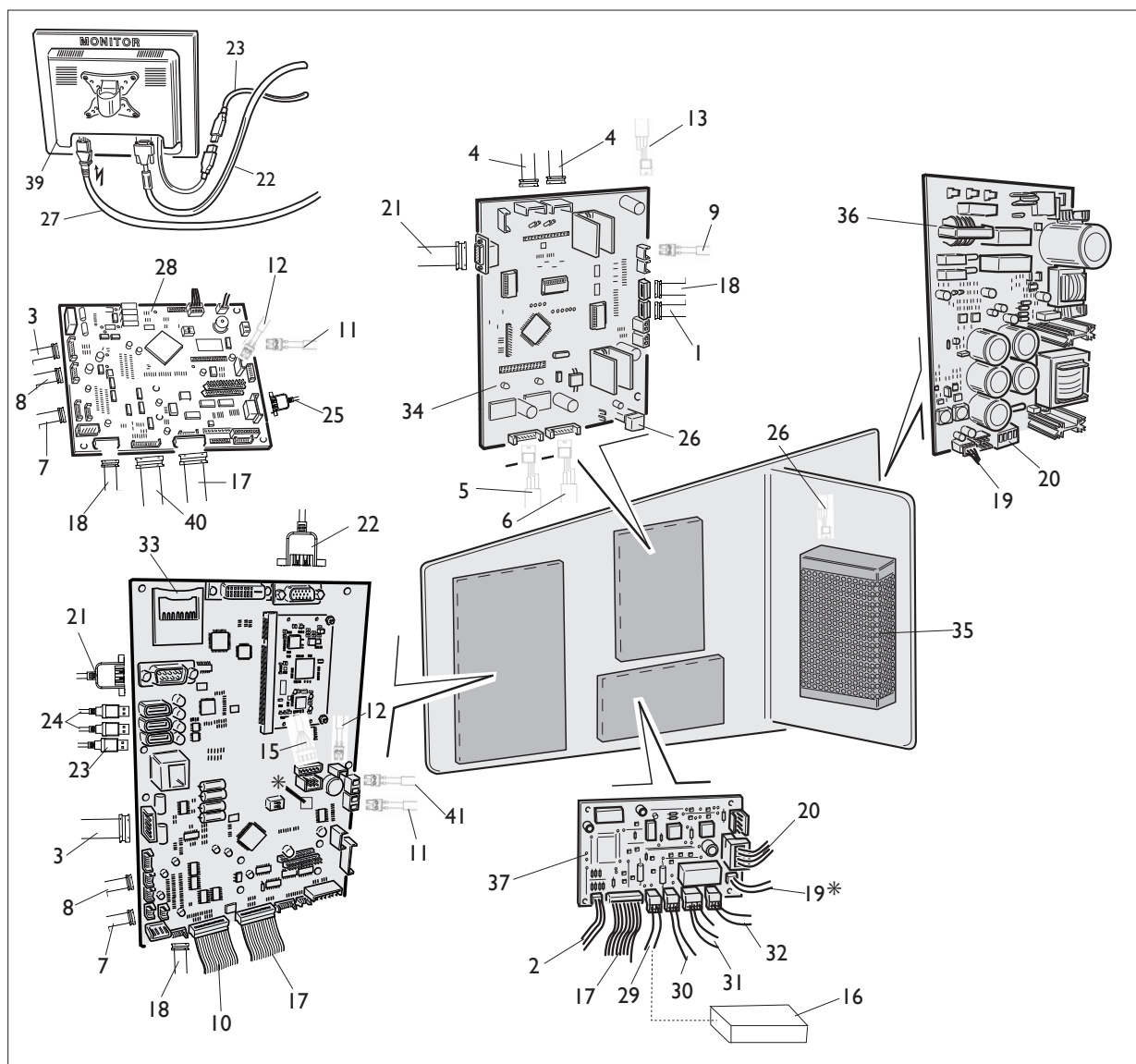
PANNELLO ELETTRICO

ELECTRIC PANEL



Rif. Ref.	Codice Code	Descrizione	Description
1	2-80171	VATBIC D.3,9X9,5	ROUNDED HEAD SCREW TAPPING CROSS CUT D.3,9X9,5
2	2-02164	VTBEI M4X20	ROUNDED HEAD SCREW SOCKET M4X20
3	4-117523	PANNELLO DI CHIUSURA	CLOSING PANEL
4	445294	TAPPO NERO D.7,9	BLACK PLUG D.7,9
5	5-120062	SUPPORTO SK	SUPPORT BOARDS
6	4-113407	CAVO PROLUNGA USB	CABLE USB EXTENSION
7	2-02080	VTCEI M4X10	CIRCULAR SOCKET HEAD SCREW M4X10
8	5-102761	SK ALIMENTATORE	POWER SUPPLY BOARD
9	4-117504	ALIMENTATORE RS	RS POWER SUPPLY
10	2-80099	VTCEI M4X18	CIRCULAR SOCKET HEAD SCREW M4X18
11	2-03363	ROSETTA D.4	WASHER D.4
12	5-120263	SK MOTORI (MCM)	MOTOR P.C.. BOARD (MCM)
13	4-117188	CAVO CASSETTA ELETTRICA	CABLE ELECTRICAL BOX
14	1060127	CAVO PROLUNGA USB	CABLE USB EXTENSION
15	5-120063	SK MBUGRF-2 EM9980	P.C. BOARD MBUGRF-2 EM9980
15	5-120065	SK MBUGRF-2 EM9580	P.C.BOARD MBUGRF-2 EM9580
15	5-120064	SK MBU 32F EYELIGHT	P.C.BOARD MBU 32F EYELIGHT
15	5-120066	SK MBU 32F EM9550	P.C.BOARD MBU 32F EM9550
16	5-120067	SK ACQ-MUX EYELIGHT	P.C.BOARD ACQ-MUX EYELIGHT
16	5-120068	SK ACQ-MUX EM9980	P.C.BOARD ACQ-MUX EM9980

CABLAGGI ELETTRICI ELECTRICAL WIRING



Rif. Ref.	Codice Code	Descrizione	Description
1	449319	FLAT 8VIE L.1100mm	FLAT CABLE 8WAY L.1100mm
2	4-102558	FLAT 4VIE L.800mm	FLAT CABLE 4WAY L.800mm
3	5-103533	PICK-UP	PICK-UP
4	5-102440	CAVO SENSORE LASER	LASER SENSOR CABLE
5	4-118216	CAVO 4X0,22 6P L.650mm	CABLE 4X0,22 6P L.650mm
6	4-117895	CAVO 4X0,22 6P L.900mm	CABLE 4X0,22 6P L.900mm
7	4-109588	FLAT 6VIE L.1100mm	FLAT CABLE 6-WAY L.1100mm
8	4-109760	FLAT 4VIE L.2200mm	FLAT CABLE 4-WAY L.2200mm
9	4-118111	CAVO 2P L.1100mm EYELIGHT	CABLE 2P L.1100mm EYELIGHT
10	4-104684	FLAT 16VIE L.1400mm EM9580	FLAT CABLE 16-WAY L.1400mm EM9580
11	4-117894	CAVO 2X1 L.1500mm	CABLE 2X1 L.1500mm
12	4-117896	CAVO 2P L.700mm	CABLE 2P L.700mm
13	4-107142	CAVO 4X0,5 L.1000mm	CABLE 4X0,5 L.1000mm
14	4-107148	CAVO TELECAMERA L.1500mm	CAMERA CABLE L.1500mm
15	4-113078	CAVO L.2000mm	CABLE L.2000mm
16	4-118395	SK FILTRO LC	LC FILTER
17	4-109502	FLAT 18VIE L.250mm	FLAT CABLE 18-WAY L.250mm
18	4-118110	FLAT 8VIE L.650mm	FLAT CABLE 8-WAY L.650mm
19	4-111346	CAVO ALIMENTAZIONE MCM-MBU 32F	POWER CABLE MCM-MBU32F
20	4-105030	CAVO ALIMENTAZIONE SWITCH-MCM 48V	POWER CABLE SWITCH-MCM 48V
21	442198	CAVO SERIALE 9PIN L.2000mm	SERIAL CABLE 9PIN L.2000mm
22	4-107133	CAVO PROLUNGA A VASH. 15HD L.3000mm	EXTENTION CABLE 15HD L.3000mm
23	1060127	CAVO PROLUNGA USB	CABLE USB EXTENSION
24	4-113407	CAVO PROLUNGA USB	CABLE USB EXTENSION
25	4-105051	CAVO SERIALE RS232	SERIAL CABLE RS232
26	4-107112	CAVO 2P L.500mm	CABLE 2P L.500mm
27	4-117898	CAVO ALIMENTAZIONE F. PRESA VDE	VDE POWRE CABLE
28	5-120064	SK MBU 32F EYELIGHT	P.C.BOARD MBU 32F EYELIGHT
28	5-120066	SK MBU 32F EM9550	P.C.BOARD MBU 32F EM9550
29	5-104252	FRENO	BRAKE
30	5-101987	FRIZIONE	CLUTCH
31	5-103007	MOTORE 48V	MOTOR 48V
32	4-105403	MOTORIDUTTORE	MOTOR GEAR
33	5-120063	SK MBUGRF-2 EM9980	P.C. BOARD MBUGRF-2 EM9980
33	5-120065	SK MBUGRF-2 EM9580	P.C.BOARD MBUGRF-2 EM9580
34	5-120067	SK ACQ-MUX EYELIGHT	P.C.BOARD ACQ-MUX EYELIGHT
34	5-120068	SK ACQ-MUX EM9980	P.C.BOARD ACQ-MUX EM9980
35	4-117504	ALIMENTATORE RS	RS POWER SUPPLY
36	5-102761	SK ALIMENTATORE	POWER SUPPLY BOARD
37	5-120263	SK MOTORI (MCM)	MOTOR P.C.. BOARD (MCM)
38	4-130303	PC ASEM	PC ASEM
39	4-118435	MONITOR TOUCHSCREEN EYELIGHT-EM9980	TOUCHSCREEN MONITOR EYELIGHT-EM9980
39	3-00673	MONITOR 22" LCD/LED WIDE EM9580	LCD MONITOR 22" EM9580
40	4-106053	FLAT L.300mm EM9550	FLAT CABLE L.300mm EM9550
41	4-118689	CAVO 2P L.1100mm EM9980	CABLE 2P L.1100mm EM9980



Via per Carpi, n°9 - 42015 Correggio (RE) ITALY
Tel. ++39 0522 639111 - Fax ++39 0522 639150
www.corgchi.com - info@corgchi.com

Code 4-117243

Production date : 06 / 2013

Il disegno è realizzato con tutti i particolari ma solo quelli codificati sono forniti come ricambi. L'Azienda si riserva la facoltà di apportare modifiche senza preavviso.

The drawing shows all parts but only the coded parts are supplied as spares. The Company reserves the right to make modifications without prior notice.