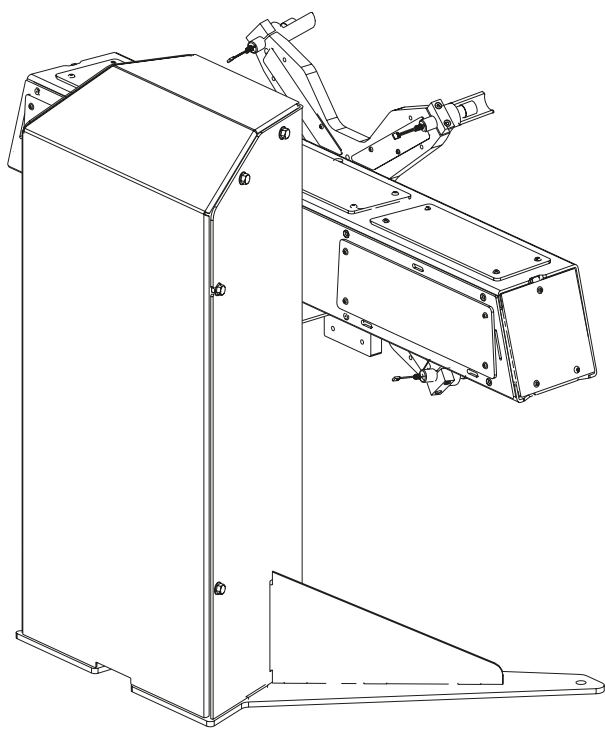


# R.E.M.O. RAPIDE

Pezzi di ricambio / Spare part list



Code: 4-119638A

Production date: 03 / 2016



## **I**

**Sul presente documento sono stati evidenziati con colore grigio i ricambi consigliati e indicati in grassetto i codici che sono variati rispetto a quelli riportati nella precedente versione del 01/16**

## **EN**

**In this document, the recommended spare parts have been highlighted in gray, while in bold you find those codes which are different if compared with the previous version dated 01/16**

## **DE**

**Im vorliegenden Dokument wurden die empfohlenen Ersatzteile in grauer Farbe hervorgehoben; die Teilenummern in Fettdruck haben sich beziehend auf die vorherige Version vom 01/16 geändert.**

## **FR**

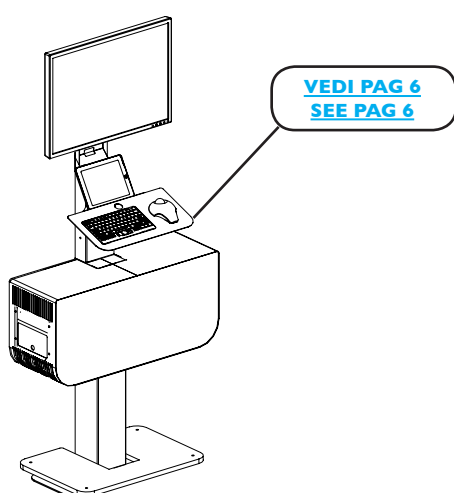
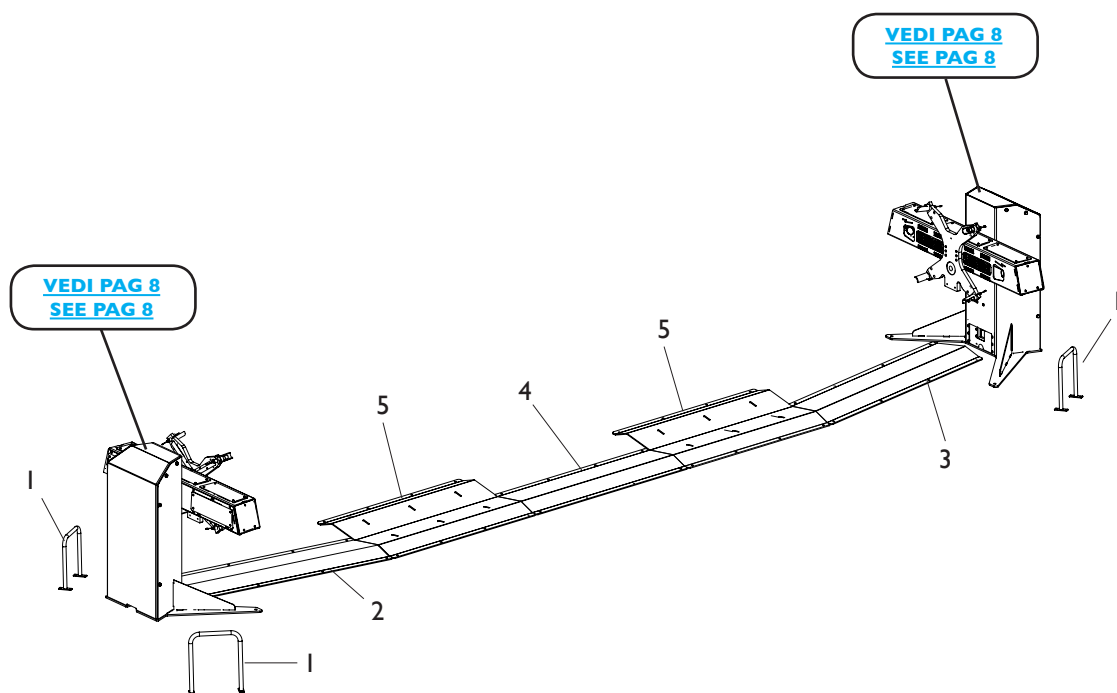
**Dans ce document, les pièces de rechange préconisées sont soulignées en gris, tandis que les références différentes par rapport à la version précédente du 01/16 sont en gras**

# Sommario\Contents

COMPLESSIVO R.E.M.O. RAPIDE R.E.M.O. RAPIDE OVERALL.....	4
GRUPPO UNITA' CENTRALE UNIT GROUP.....	6
GRUPPO TESTINA WHEEL MEASURING UNIT.....	8

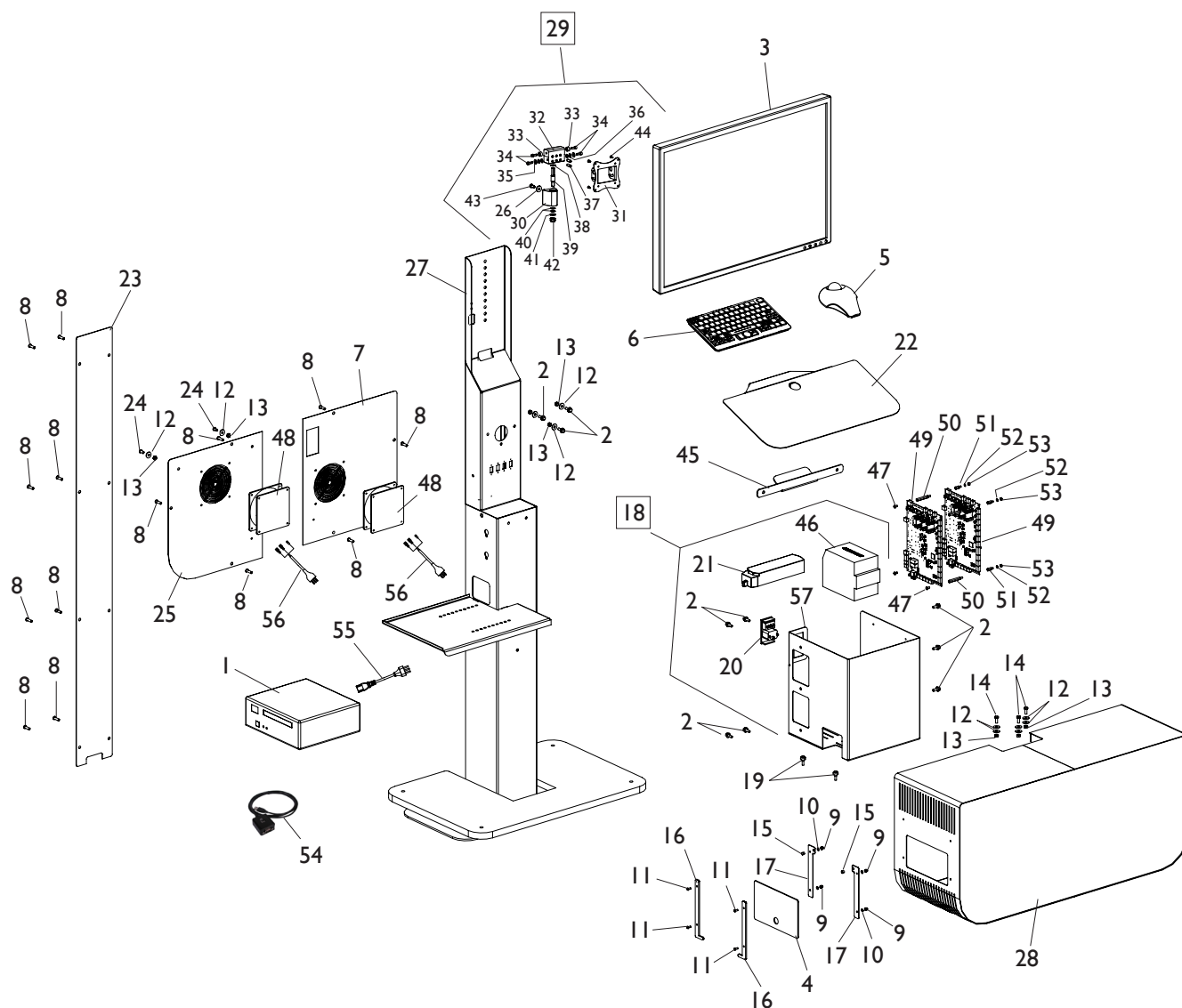
# COMPLESSIVO R.E.M.O. RAPIDE

## R.E.M.O. RAPIDE OVERALL



Rif. Ref.	Codice Code	Descrizione	Description
1	4-119670	BULL BAR	BULL BAR
2	4-119665	PIASTRA <b>SX</b>	<b>LEFT</b> PLATE
3	4-119664	PIASTRA <b>DX</b>	<b>RIGHT</b> PLATE
4	4-119666	PIASTRA <b>CENTRALE</b>	<b>MIDDLE</b> PLATE
5	4-119667	PIASTRA CENTRAGGIO RUOTA	WHEEL PLATE

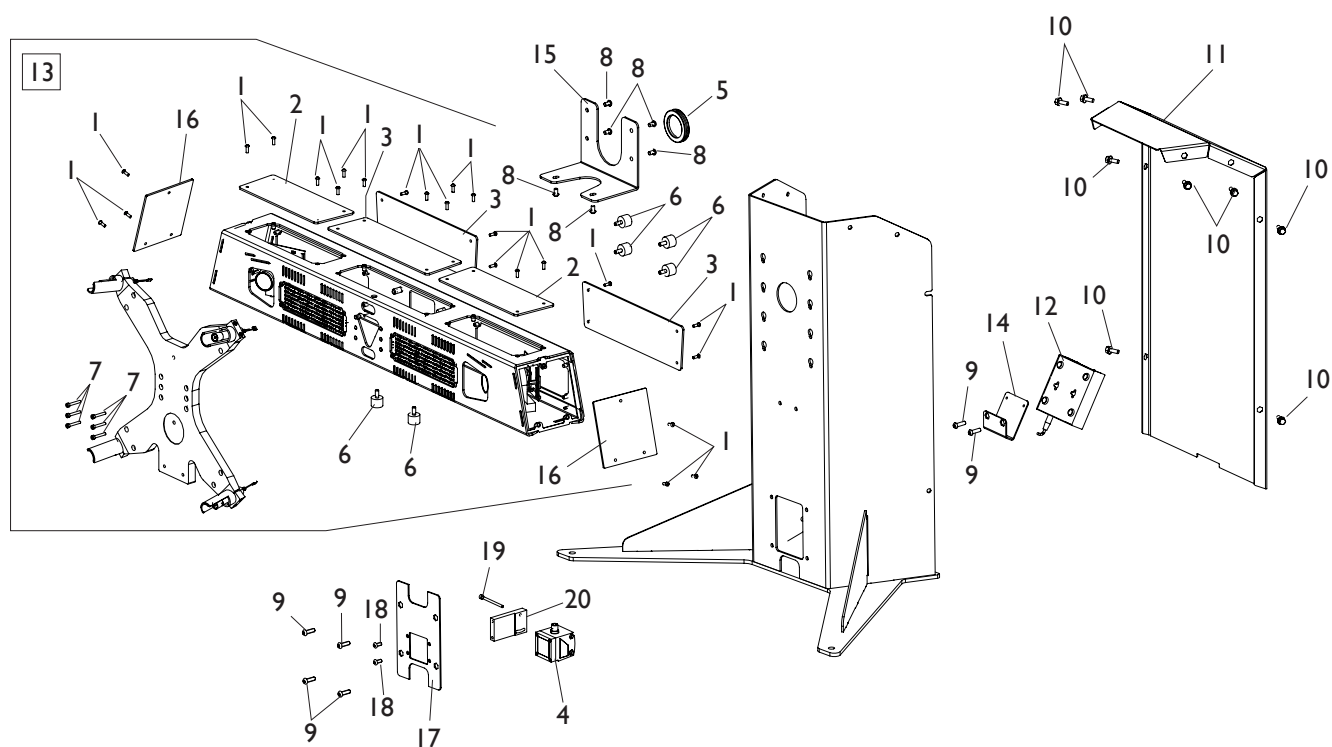
# GRUPPO UNITA' CENTRALE UNIT GROUP



[TORNA AL COMPLESSIVO](#)  
[RETURNS TO OVERALL](#)

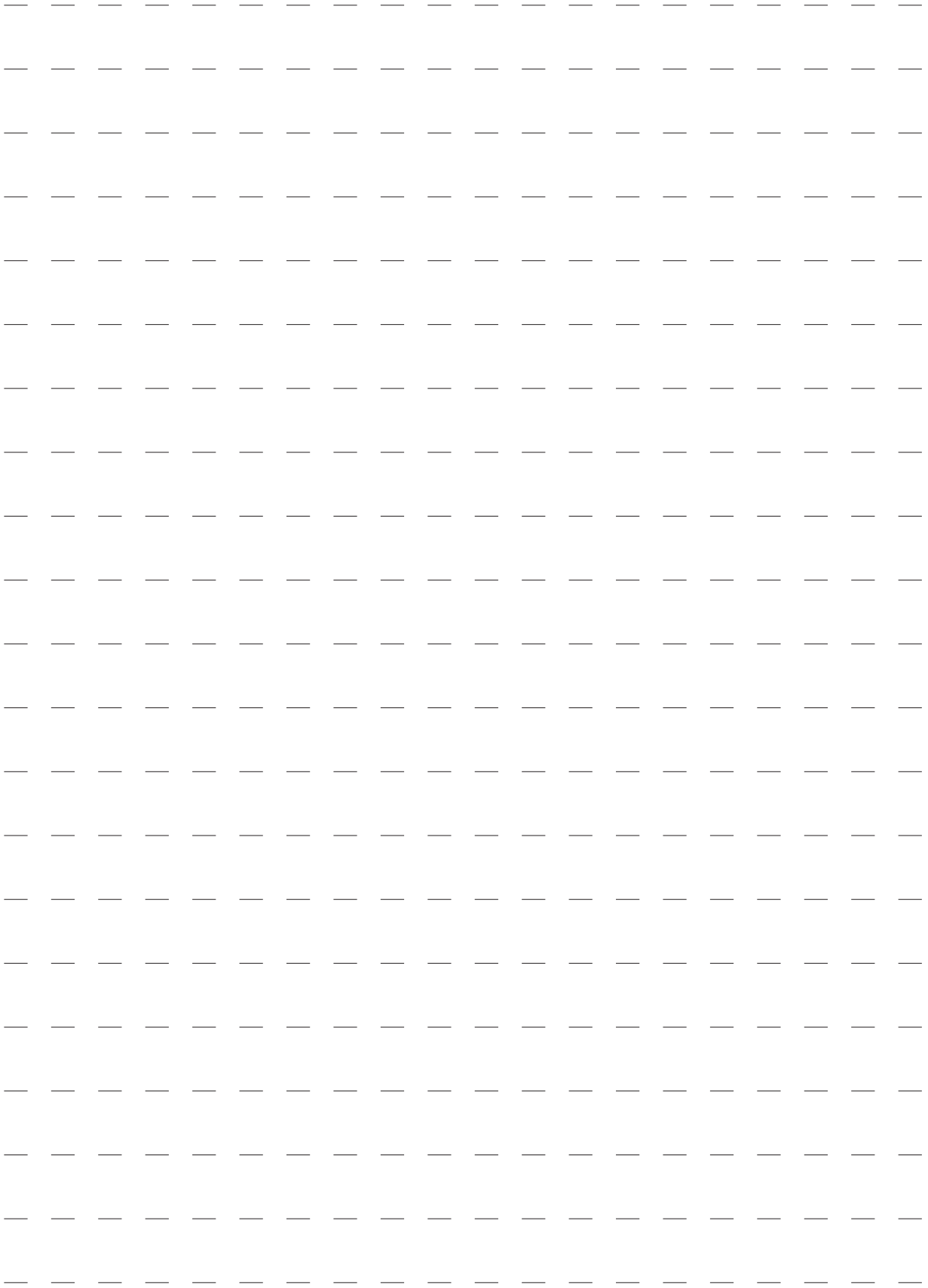
Ref.	Code	Descrizione	Description
1	5-120277	PC CLIENT	CLIENT PC
2	2-03607	VTE FLANGIATA M6X16	HEXAGON HEAD SCREW M6X16
3	4-115083	MONITOR LCD 27"	27" LCD MONITOR
4	4-130166	CARTER SPORTELO	PLATE
5	3-02734	MOUSE TRACKBALL	TRACKBALL MOUSE
6	3-02735	MINI TASTIERA MULTIMEDIALE	MINI MULTIMEDIA KEYBOARD
7	4-130144	PIASTRA POSTERIORE	REAR PLATE
8	2-02147	VTBEI M6X20	ROUNDED HEAD SCREW SOCKET M6X20
9	2-01018	DADO ES.A. M4	AUTOLOCKING HEXAGON NUT M4
10	2-00209	RONDELLA D.4	WASHER D.4
11	2-02146	VTBEI M4X12	ROUNDED HEAD SCREW SOCKET M4X12
12	2-00679	RONDELLA D.6,6X18X1,5	WASHER D.6,6X18X1,5
13	2-00146	DADO ES.N. M6	NORMAL HEXAGON NUT M6
14	2-01223	VTE M6X16	HEXAGON HEAD SCREW M6X16
15	428933	TAPPO NERO D.6,4 SP.1,6	BLACK CAP D.6,4
16	4-130135	PIASTRA SPESSORE SPORTELO	SHIM PLATE
17	4-130136	PIASTRA GUIDA SPORTELO	GUIDE PLATE
18	5-106695	IMPIANTO ELETTRICO	ELECTRICAL PANEL
19	401530	PIEDE IN GOMMA	RUBBER FOOT
20	3-10022	MODULO POLYSNAP+PRESA	POLYSNAP MODULE
21	5-100446	PRESA MULTIPLA	MULTIPLE ELECTRIC SOCKET
22	4-130132	SUPPORTO TASTIERA	KEYBOARD SUPPORT
23	4-130137	PIASTRA CHIUSURA COLONNA	LOCKING PLATE
24	2-02234	VTBEI M6X12	ROUNDED HEAD SCREW SOCKET M6X12
25	4-130145	PIASTRA POSTERIORE PC	PC REAR PLATE
26	305972	RONDELLA D.8X25X22X3	WASHER D.8X25X22X3
27	5-120278	TELAIO UNITÀ CENTRALE	CENTRAL UNIT FRAME
28	5-120279	CARTER UNITÀ CENTRALE	CENTRAL UNIT CARTER
29	5-121005	SUPPORTO MONITOR CPL.	MONITOR SUPPORT ASSEMBLY
30	4-105400	BLOCCHETTO	BLOCK
31	4-119950	<b>FLANGIA SUPPORTO MONITOR</b>	<b>MONITOR SUPPORT FLANGE</b>
32	4-119949	<b>CERNIERA SNODO</b>	<b>SUPPORT</b>
33	4-118830	BOCCOLA D. 6,1X15X9	BUSH D. 6,1X15X9
34	2-02378	VTCEI M6X16	HEXAGON SOCKET HEAD SCREW M6X16
35	309139	RONDELLA D. 6,25X16X2	WASHER D. 6,25X16X2
36	3-01756	ROND NO MET D. 6,2X14X1	WASHER D. 6,2X14X1
37	2-00994	VSTEI M8X20	SCREW M8X20
38	310842	RONDELLA D. 10,25X20X0,3	WASHER D. 10,25X20X0,3
39	4-118828	PERNO VERTICALE SNODO	VERTICAL PIN
40	2-02993	ROND ELASTICA D. 4,3X16	ELASTIC WASHER D. 4,3X16
41	2-00213	RONDELLA D.10	WASHER D.10
42	2-01019	DADO ES.A. M10	AUTOLOCKING HEXAGON NUT M10
43	2-03137	VTCEI B. M8X16	LOW HEX. SOCKET HEAD SCREW M8X16
44	2-00605	VTCIC M4X10	SCREW M4X10
45	4-119661	SUPPORTO PORTA TABLET	TABLET SUPPORT
46	3-03312	ALIMENTATORE 24 V 480-600 W	POWER SUPPLY 24 V 480-600 W
47	2-00662	VTCIC M4X8	SCREW M4X8
48	422083	VENTILATORE	FAN
49	4-113433	SK MOTORE (OMROB)	MOTOR BOARD (OMROB)
50	4-104205	DIST. ES. M/F M4 MF10 H.4070 40	HEXAGON SPACER M/F M4 MF10 H.4070 40
51	449005	DIST.ES.M/F M4 - MF10 H.4070 12	HEXAGON SPACER M/F M4 MF10 H.4070 12
52	2-71541	ROSETTA D.4	ELASTIC WASHER D.4
53	2-00143	DADO ES. M4	HEXAGON NUT M4
54	3-10054	CONVERTITORE USB - PORTA SERIALE	USB CABLE
55	423506	CAVO 3X0.75 L. 2000mm SP.ITA - PR.VDE	VDE CABLE 3X0.75 L. 2000mm
56	246949	CAVO VENTILATORE	FAN CABLE
57	4-119663	SUPPORTO IMPIANTO ELETTRICO	ELECTRICAL SYSTEM SUPPORT

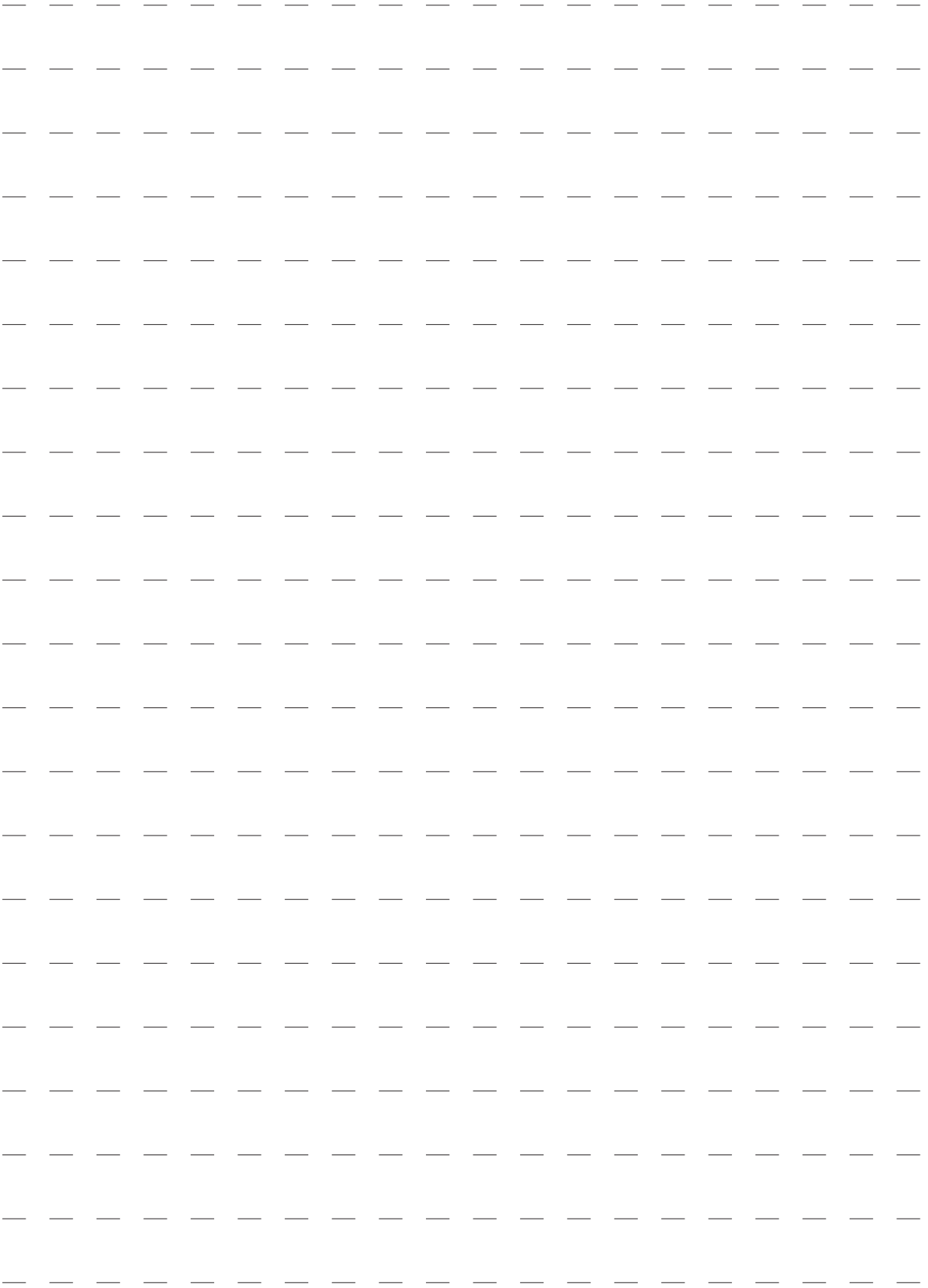
# GRUPPO TESTINA WHEEL MEASURING UNIT



**TORNA AL COMPLESSIVO**  
**RETURNS TO OVERALL**

Rif. Ref.	Codice Code	Descrizione	Description
1	2-02146	VTBEI M4X12	ROUNDED HEAD SCREW SOCKET M4X12
2	4-119649	CARTER PICCOLO	SMALL COVER
3	4-119650	CARTER GRANDE	BIG COVER
4	4-330068	SENSORE DISTANZA OTTICO	OPTICAL SENSOR
5	3-10007	PASSACAVO TONDO D. 39X50,8X2,5	ROUND CAP D. 39X50,8X2,5
6	441420	ANTIVIBRANTE 20X15 M6X14	SHOCKABSORBER 20X15 M6X14
7	2-00911	VTCEI M4X25	HEXAGON SOCKET HEAD SCREW M4X25
8	2-02569	VTBEI M6X10	ROUNDED HEAD SCREW SOCKET M6X10
9	2-02794	VTBEI M6X20	ROUNDED HEAD SCREW SOCKET M6X20
10	2-03607	VTE FLANGIATA M6X16	HEXAGON HEAD SCREW M6X16
11	4-119643	CARTER FRONTALE	FRONT COVER
12	5-105116	SWITCH NETGEAR 5 PORTE	5 PORT NETGEAR SWITCH
13	5-106688	GRUPPO TESTINA	WHEEL MEASURING UNIT ASSEMBLY
14	4-119640	SUPPORTO SWITCH	SWITCH SUPPORT
15	4-119639	SUPPROTO TESTINA	WHEEL MEASURING UNIT SUPPORT
16	4-116867	COPERCHIO IR	IR COVER
17	4-120198	PIASTRA SUPPORTO SENSORE	OPTICAL SENSOR PLATE
18	2-02677	VTBEI M5X12	ROUNDED HEAD SCREW SOCKET M5X12
19	2-03034	VTCEI M4X55	HEXAGON SOCKET HEAD SCREW M4X55
20	4-119641	SUPPORTO SENSORE	SENSOR SUPPORT







Via per Carpi, n°9 - 42015 Correggio (RE) ITALY  
Tel. ++39 0522 639111 - Fax ++39 0522 639150  
[www.corgchi.com](http://www.corgchi.com) - [info@corgchi.com](mailto:info@corgchi.com)

Code 4-119638A

Production date : 03 / 2016



Il disegno è realizzato con tutti i particolari ma solo quelli codificati sono forniti come ricambi. L'Azienda si riserva la facoltà di apportare modifiche senza preavviso.

The drawing shows all parts but only the coded parts are supplied as spares. The Company reserves the right to make modifications without prior notice.