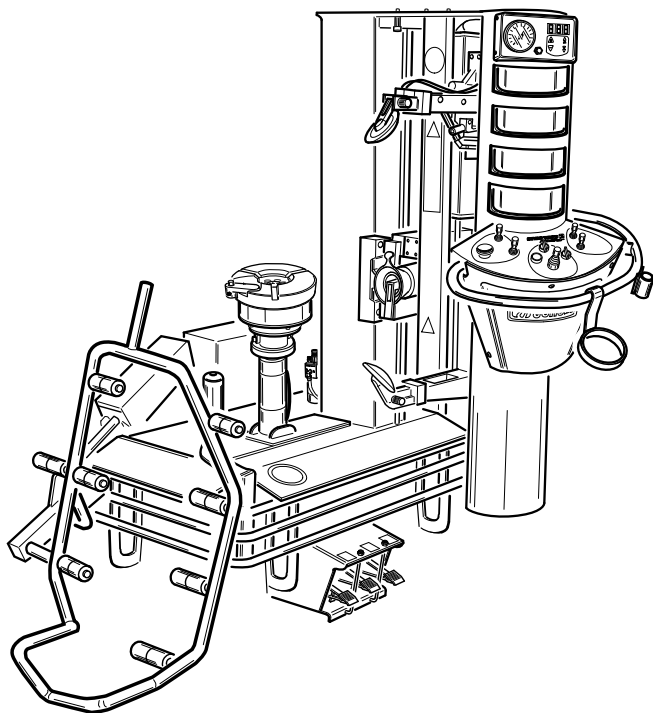


ACCESSORI ORIGINALI

per smontagomme

ARTIGLIO MASTER 26 MI

Bridgestone - Cod. 4-105511C del 04/08



ORIGINAL ACCESSORIES

for tyre changers

ARTIGLIO MASTER 26 MI

Legenda



Accessori di serie
Standard accessories



Accessori a richiesta
Accessories optional

801XXX
8-XXX

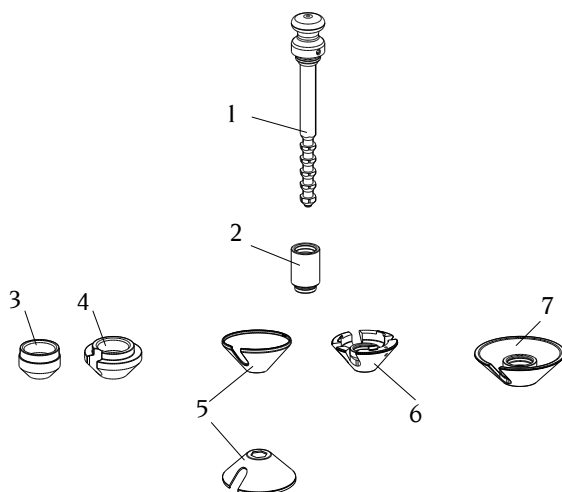
Accessori
Accessories

900XXX

Ricambi
Spare parts

Q.tà: nr 1

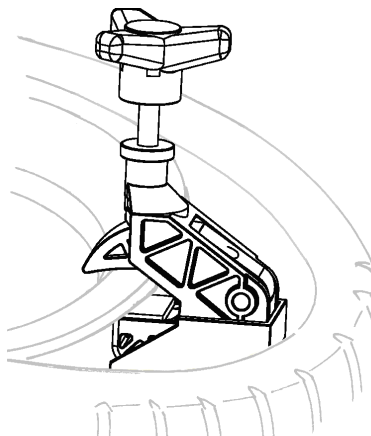
Q.ty: 1



- | | | |
|---|--|-------------|
| 1 | Maniglia multibloccaggio | 9005-100683 |
| | <i>Universal locking pistol</i> | |
| 2 | Prolunga per maniglia | 900263436 |
| | <i>Extention for locking pistol</i> | |
| 3 | Cono Ø54 (M6)..... | 900462414 |
| | <i>Cone Ø54 (M6)</i> | |
| 4 | Cono Ø75 (M5)..... | 900462415 |
| | <i>Cone Ø75 (M5)</i> | |
| 5 | 2 Cuffie protezione cono Ø120 (M7) | 900461668 |
| | <i>2 Protection cap for cone Ø120 (M7)</i> | |
| 6 | 2 Coni Ø120 (M11)..... | 9004-102353 |
| | <i>2 Cones Ø120 (M11)</i> | |
| 7 | Cono Ø145 (M2)..... | 9004-102346 |
| | <i>Cone Ø145 (M2)</i> | |

Q.tà: nr 1

Q.ty: 1

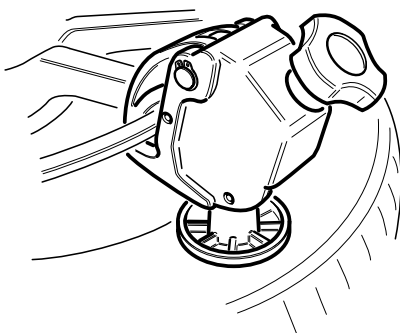


34 801262417

Pinza premitallone per pneumatici Run Flat
Bead pressing clamp for Run Flat tyres

Q.tà: nr 1

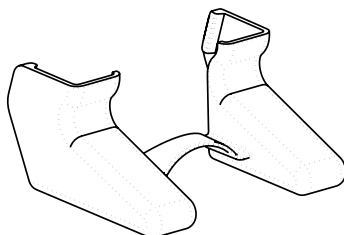
Q.ty: 1



35 8-11100120

Morsetto basculante
Sliding bead pressing clamp

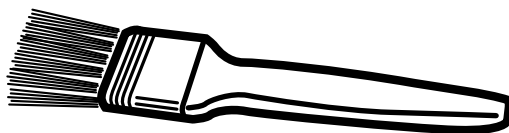
Q.tà: nr 6
Q.ty: 6



8-11100126

6 protezioni morsetto basculante (giallo)
6 protections for sliding bead pressing clamp (yellow)

Q.tà: nr 1
Q.ty: 1

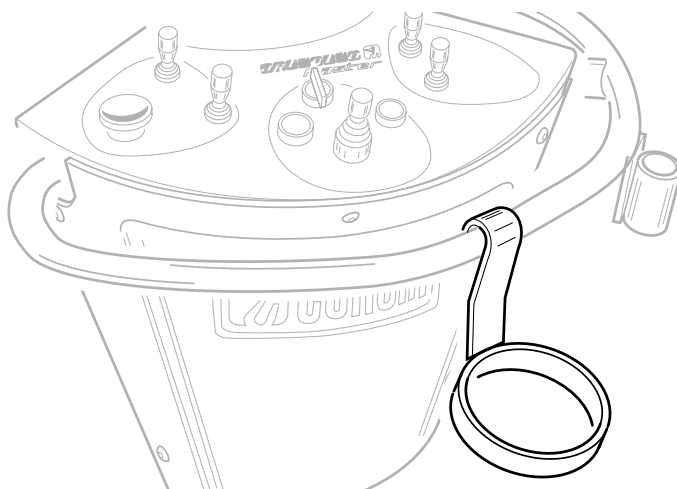


52 900415248

Pennello per grasso
Grease Brush

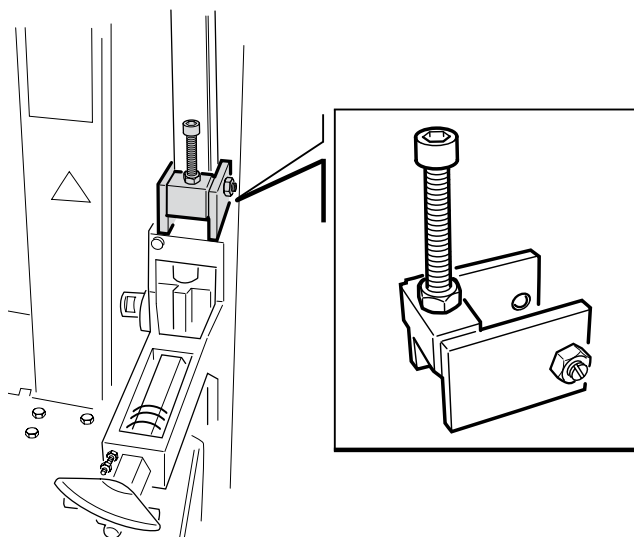
Q.tà: nr 1

Q.ty: 1



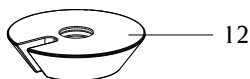
53 900261651 **Supporto per grasso 1 Kg**
1 Kg grease bucket holder

Q.tà: nr 1
Q.ty: 1



9005-101538 Finecorsa stallonatore
Bead breaker end stroke

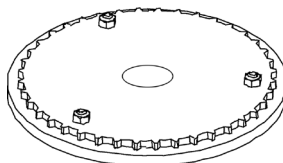
Q.tà: nr 1
Q.ty: 1



11 8-11100037 Kit cerchi furgone
Pick-up rim kit

- 12 Cono Ø187 (M3)..... 900461667
Cone Ø187 (M3)
- 13 Anello distanziale (M10) 9005-100690
Spacer ring (M10)

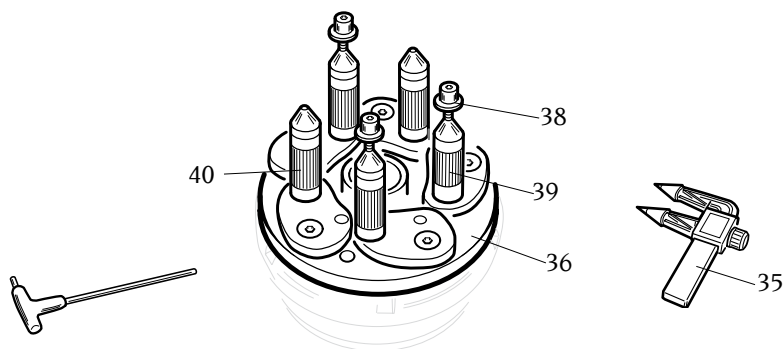
Q.tà: nr 1
Q.ty: 1



16 8-11100009 Kit "Wire Wheel" (da usare con il cod.9005-100683)
"Wire Wheel" kit (to be used with code 9005-100683)

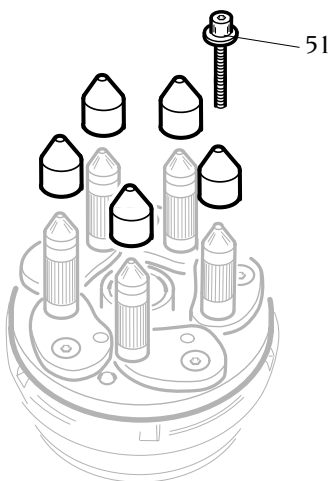
Q.tà: nr 1

Q.ty: 1



33	8-11100039	Flangia per ruote a canale rovescie <i>Reverse wheel flange</i>	
38		Ghiera di serraggio <i>Ring nut</i>	9004-102377
39		Colonna con serraggio con biella..... <i>Column with locking device</i>	5-102721
40		Colonnelle con biella..... <i>Columns with locking device</i>	5-102720
36		Flangia universale..... <i>Universal flange</i>	5-102422
35		Rilevatore fori..... <i>Hole detector</i>	900441286

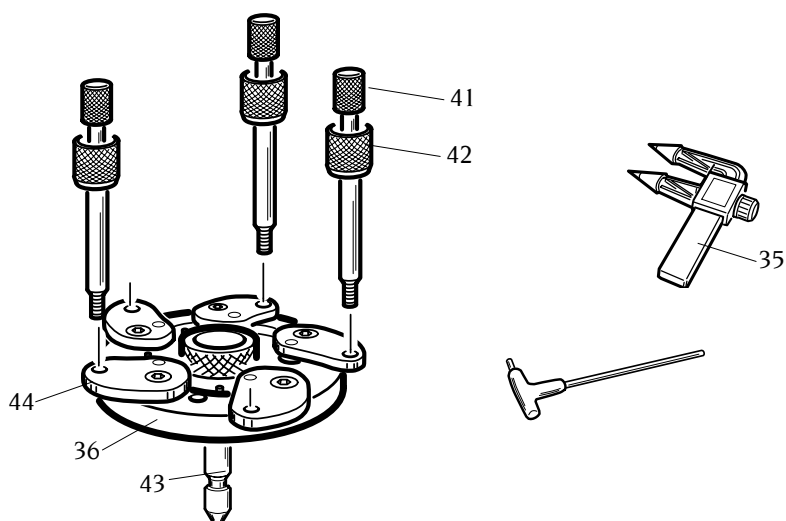
Q.tà: nr 1
Q.ty: 1



- 14 8-11100046 **Kit estensioni per flangia per ruote a canale rovescie e cieche**
(da utilizzare esclusivamente con i seguenti codici 8-11100039,
8-11100040 e 8-11100038)
Extension kit for reverse and closed wheel (to be used with the
accessories code 8-11100039, 8-11100040 and 8-11100038
only)
- 51 Ghiera di serraggio lunga9004-102566
Long ring nut

Q.tà: nr 1

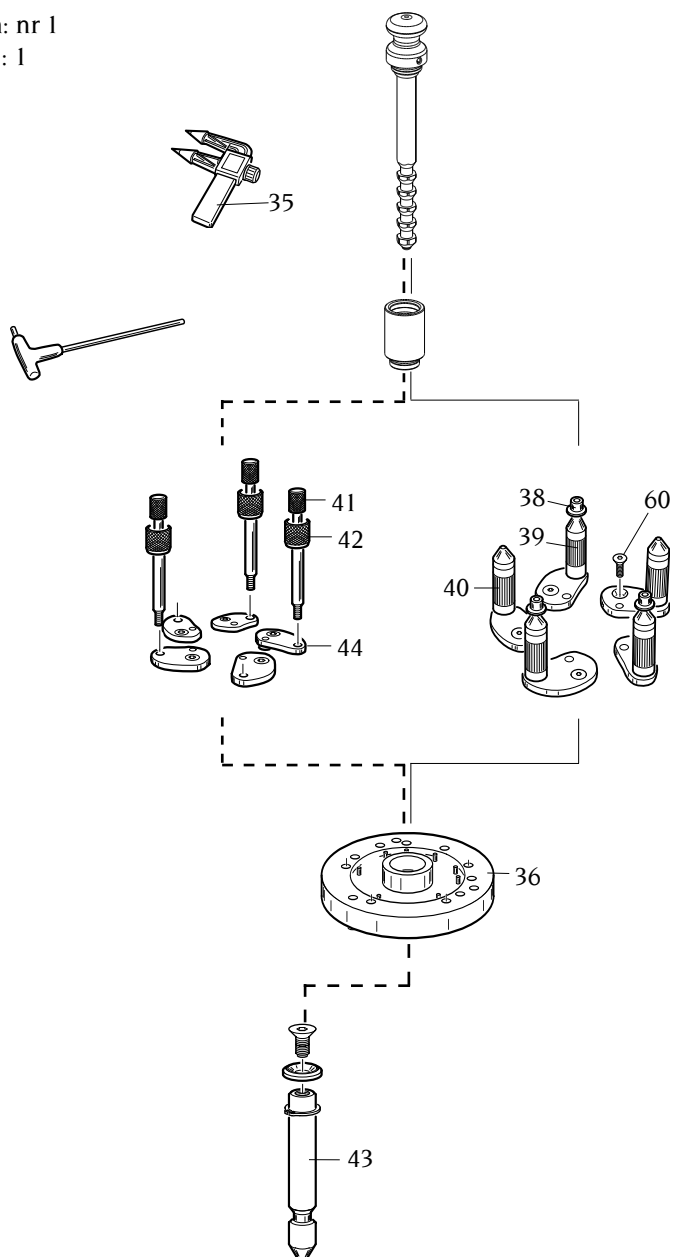
Q.ty: 1



21	8-11100038	Flangia universale cerchi ciechi Universal flange for close centre rims	
41		Vite fissaggio cerchi <i>Rim fixing screw</i>	900361647
42		Ghiera fissaggio cerchi <i>Rim fixing ring nut</i>	900361648
43		Barra attacco platorello <i>Exagonal bar</i>	9004-102372
44		Biella..... <i>Connecting rod</i>	4-107023
36		Flangia universale..... <i>Universal flange</i>	5-102422
35		Rilevatore fori..... <i>Hole detector</i>	900441286

Q.tà: nr 1

Q.ty: 1



Cerchi ciechi / Close centre rim

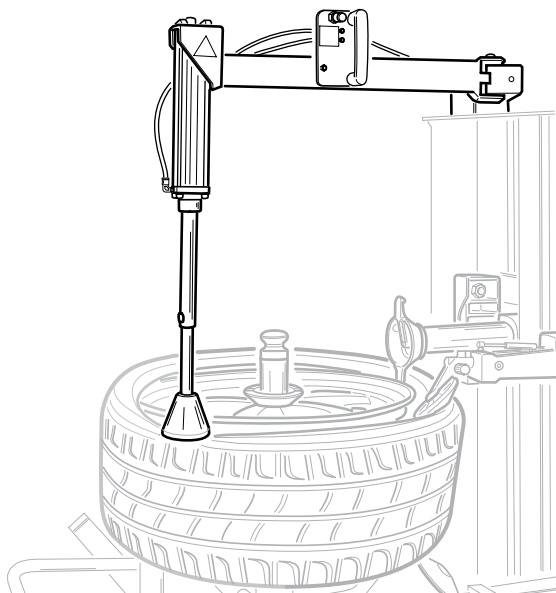
Cerchi rovesci / Reverse rim

49	8-11100040	Kit ruote NON STANDARD Not STANDARD rim kit	
38		Ghiera di serraggio <i>Ring nut</i>	9004-102377
39		Colonna con serraggio con biella..... <i>Column with locking device</i>	5-102721
40		Colonnelle con biella..... <i>Columns with locking device</i>	5-102720
36		Flangia universale..... <i>Universal flange</i>	5-102422
41		Vite fissaggio cerchi ciechi..... <i>Rim fixing screw</i>	900361647
42		Ghiera fissaggio cerchi ciechi..... <i>Rim fixing ring nut</i>	900361648
43		Barra attacco platorello..... <i>Exagonal bar</i>	9004-102372
44		Biella <i>Connecting rod</i>	4-107023
35		Rilevatore fori..... <i>Hole detector</i>	900441286
60		Vite fissaggio bielle <i>Fixing screw for connecting rod</i>	9004-101250

-

Q.tà: nr 1

Q.ty: 1

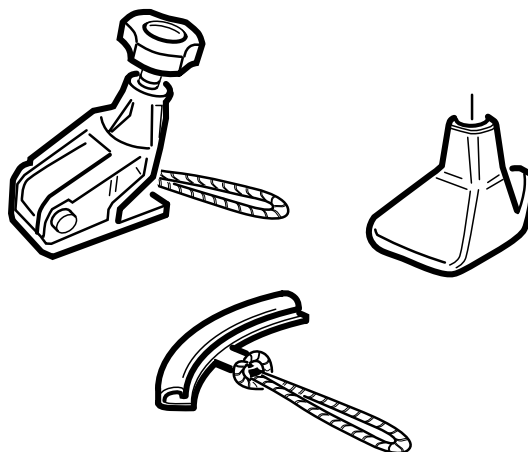


48 801263408

Premitalone pneumatico
Pneumaticbead pressing tool

Q.tà: nr 1

Q.ty: 1

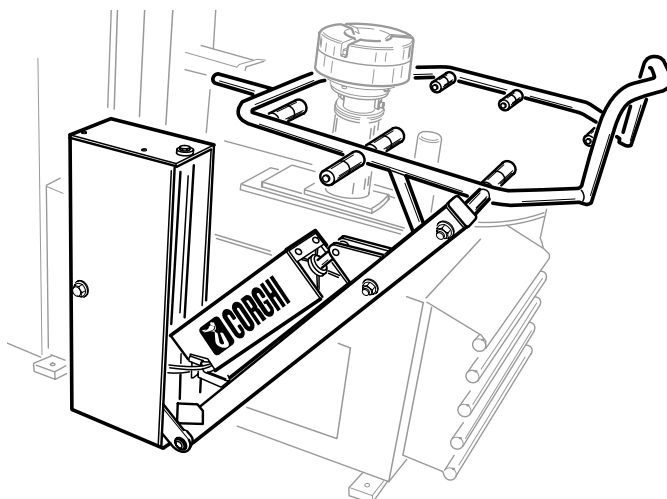


8-11100166

Kit Run Flat
Kit Run Flat

Q.tà: nr 1

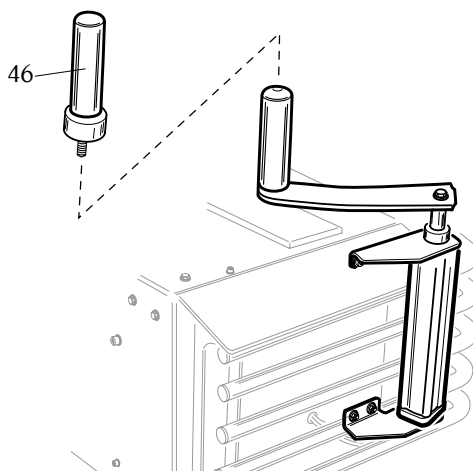
Q.ty: 1



- 18 8-11100082 Kit sollevatore ruota 26"**
Wheel lifter kit 26"

Q.tà: nr 1

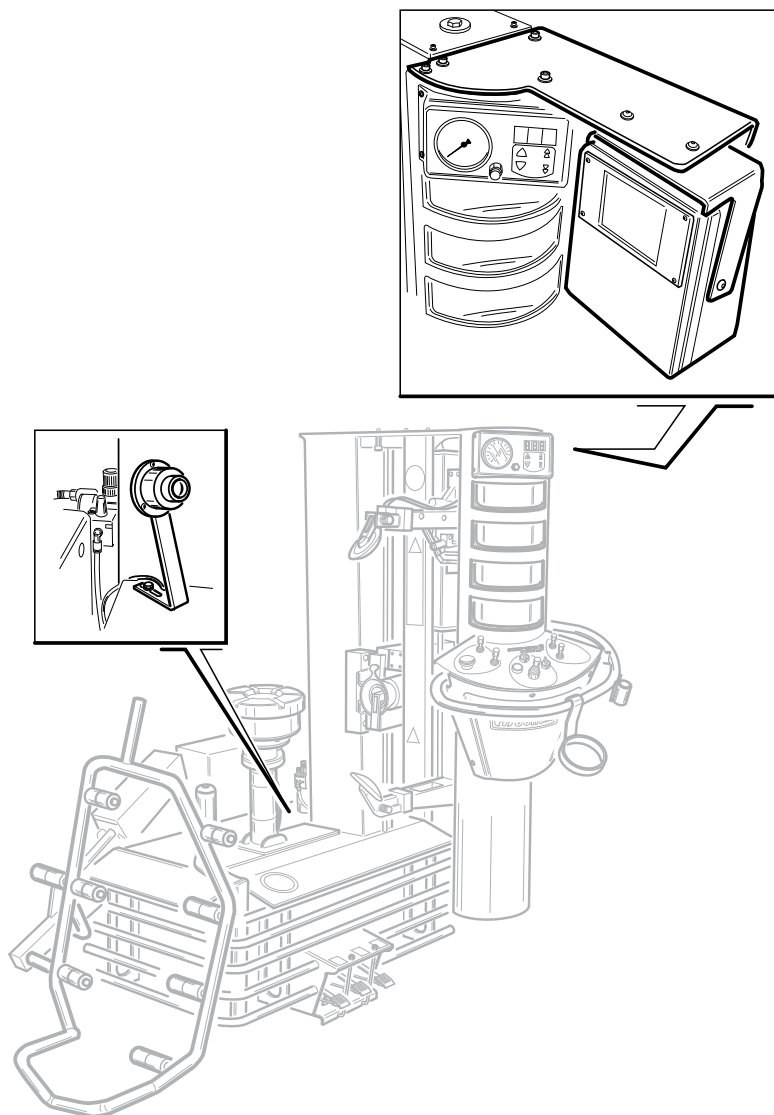
Q.ty: 1



- 19 8-11100020 Kit alzatalloni**
Bead lifter kit

46 Prolunga alzatalloni 900262852
Bead lifter extension

Q.tà: nr 1
Q.ty: 1

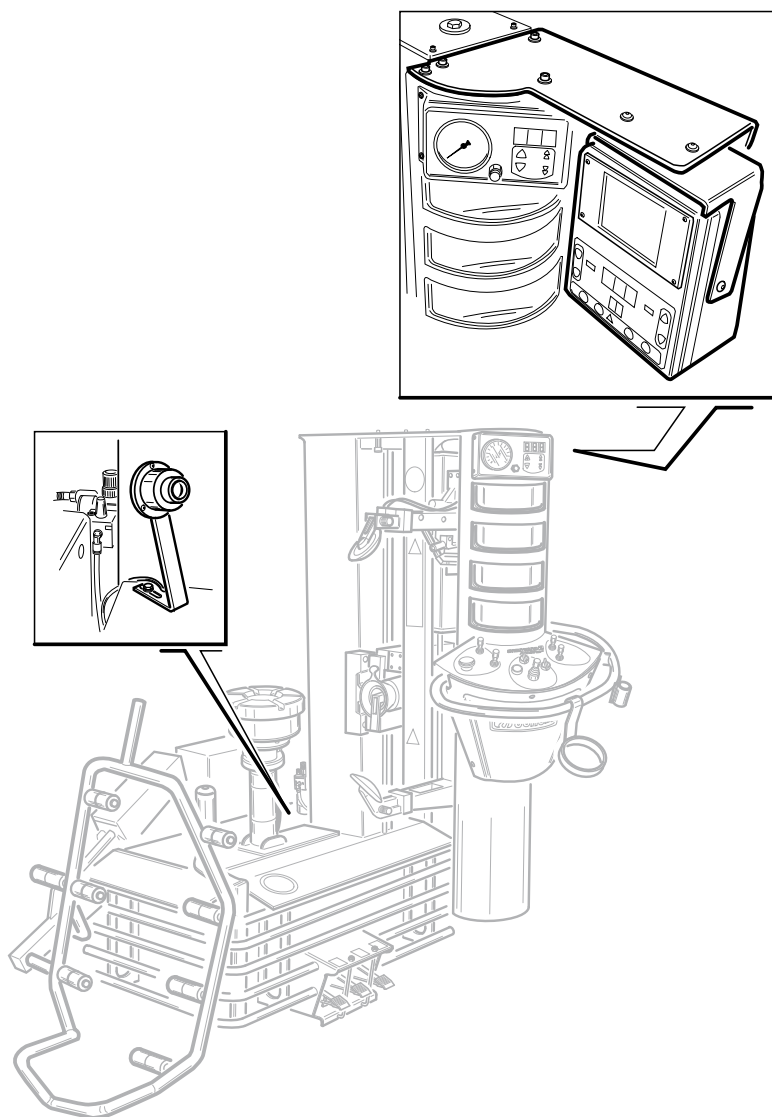


50

Telecamera (ordinabile solo con la macchina)
Lower view camera (available whith the machine only)

Q.tà: nr 1

Q.ty: 1



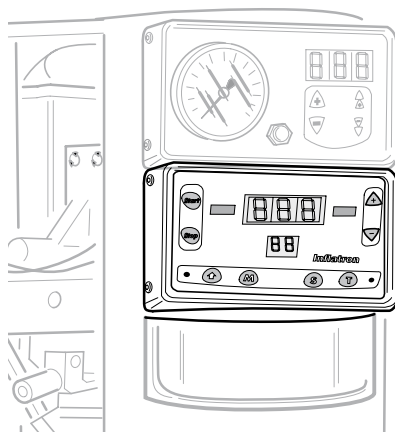
50

Telecamera + gonfiatore elettronico inflatron (ordinabile solo con la macchina)

Lower view camera and electronic inflating device (available with the machine only)

Q.tà: nr 1

Q.ty: 1



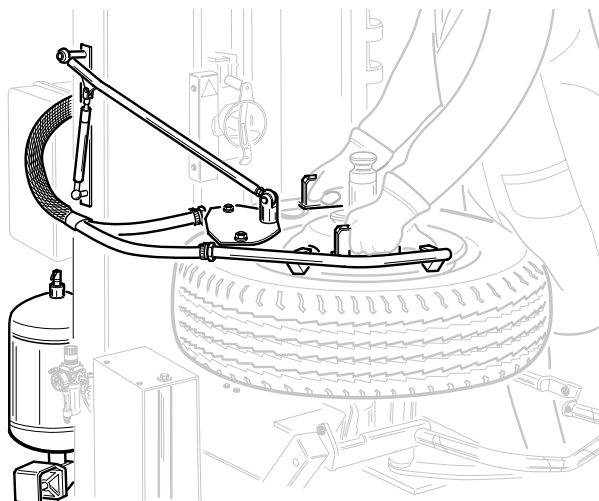
22

Kit gonfiatore elettronico: INFLATRON (ordinabile solo con la macchina)

Electronic Inflating device kit: INFLATRON (available with the machine only)

Q.tà: nr 1

Q.ty: 1

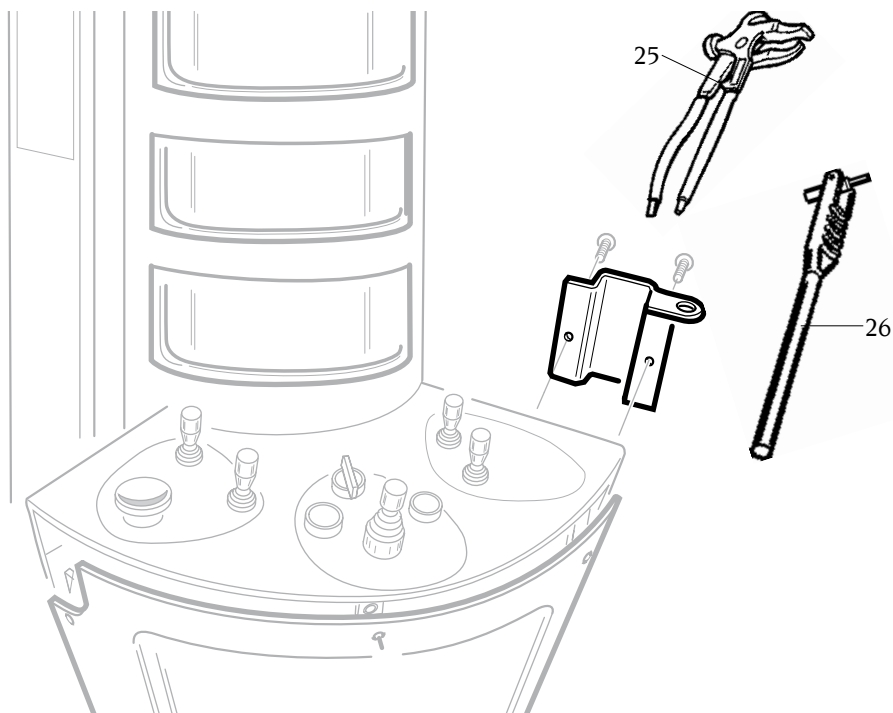


23 801260961

Kit intallamento rapido: T.I system CE
T.I system kit CE

Q.tà: nr 1

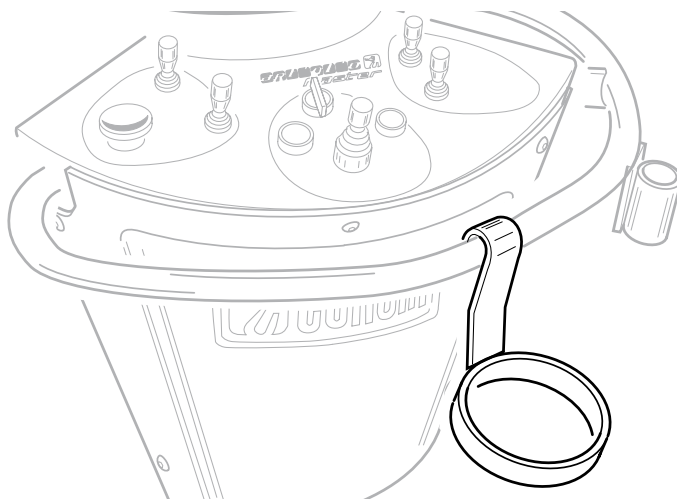
Q.ty: 1



- 24 801263126** **Supporto attrezzi con pinza per contrappesi e leva per valvola**
Metal holder complete with weight pliers and valve lever
- 25** Pinza per applicare o togliere contrappesi
dai cerchi..... 900203841
Pliers for weight fixing and removing
- 26** Leva per posizionare la valvola 801461004
Valve-inserting lever
- 27** Supporto attrezzi 900361271
Metal holder

Q.tà: nr 1

Q.ty: 1

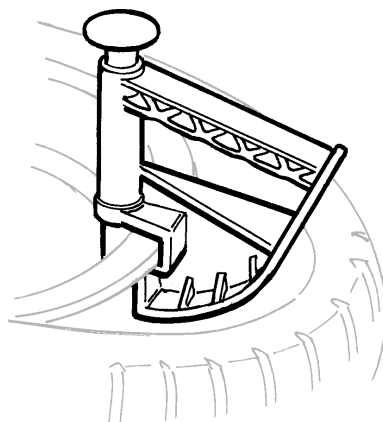


28 801261060

Supporto per grasso 3.5 - 5 Kg
3.5 - 5 Kg grease bucket holder

Q.tà: nr 1

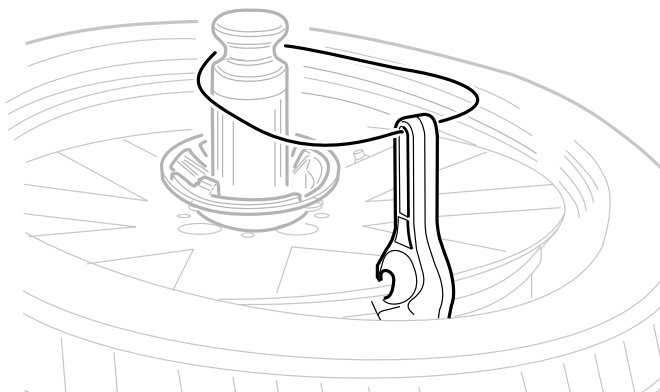
Q.ty: 1



29 801435685

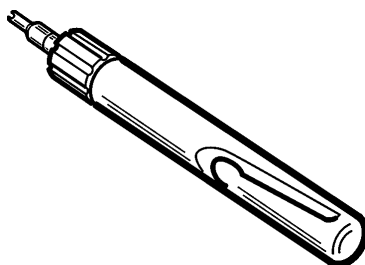
Pinza in plastica
Plastic bead pressing clamp

Q.tà: nr 1
Q.ty: 1



30 801261910 **Leva premitallone con cordino**
Plastic bead pressing lever whit cord

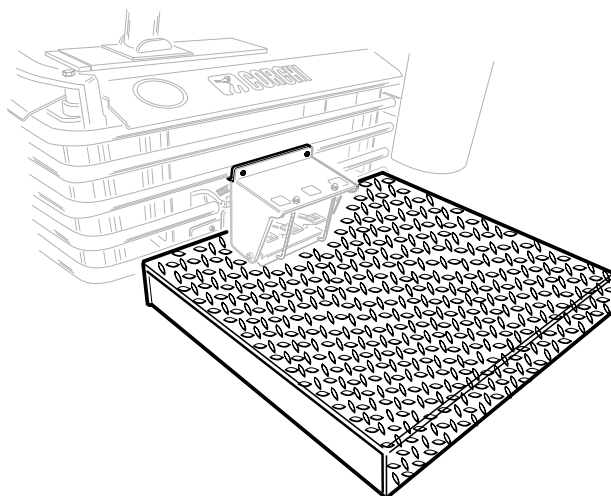
Q.tà: nr 1
Q.ty: 1



31 801461005 **Attrezzo per svitare l'inserto valvola**
Valve core screwdriver

Q.tà: nr 1

Q.ty: 1



45 8-11100023 **Kit pedana da 110 mm**
Plataform kit of 110 mm

[illegible]



CORGHI S.p.A. - Strada Statale 468 n.9
42015 CORREGGIO - R.E. - ITALY
Tel. ++39 0522 639.111 - Fax ++39 0522 639.150
www.corgchi.com - info@corgchi.com