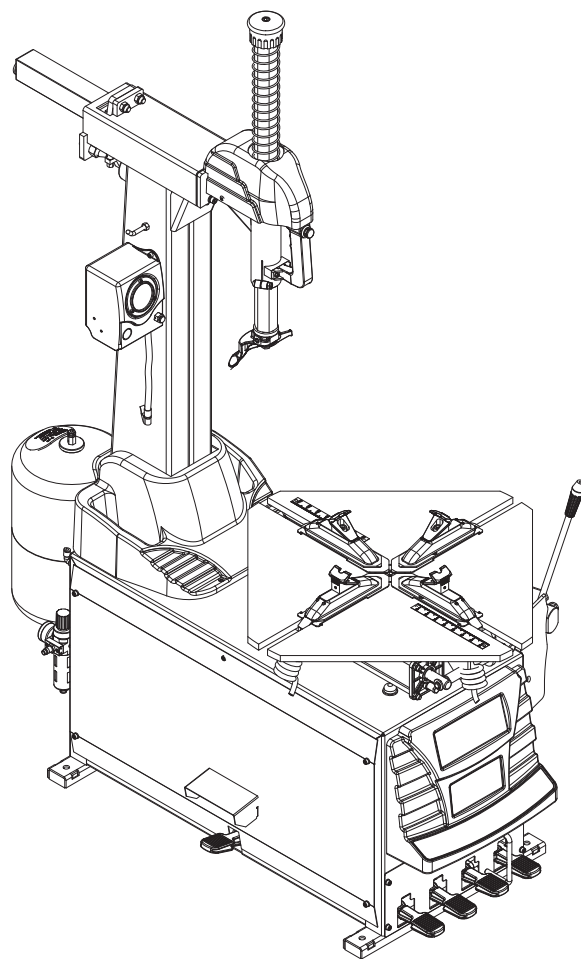


# TILTING BACK 24"

Pezzi di ricambio / Spare parts list



Code: 4-137102

Production date: 01 / 2019

**I**

**Sul presente documento sono stati evidenziati con colore grigio i ricambi consigliati.**

**EN**

**In this document, the recommended spare parts have been highlighted in gray.**

**DE**

**Im vorliegenden Dokument wurden die empfohlenen Ersatzteile in grauer Farbe hervorgehoben.**

**FR**

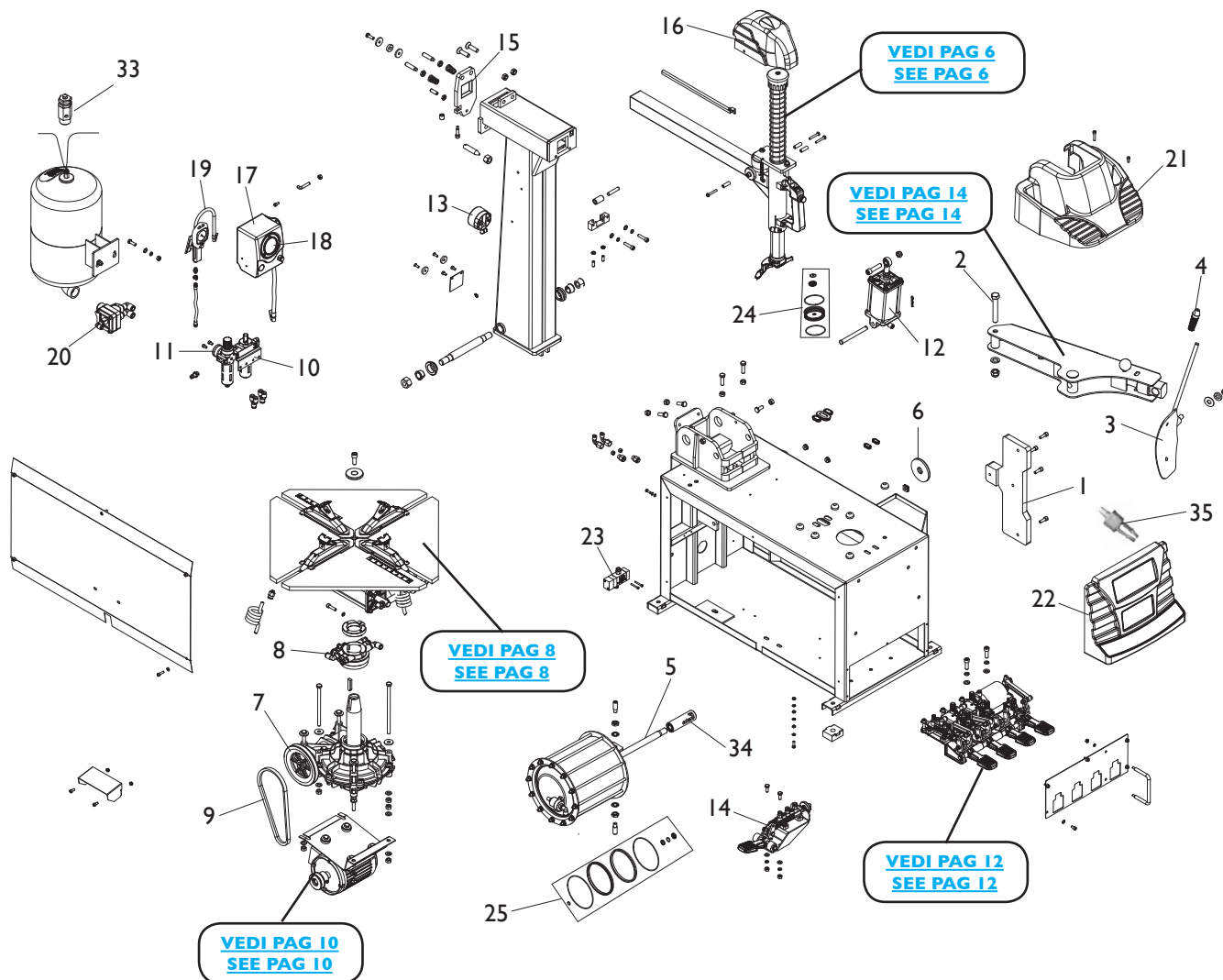
**Dans ce document, les pièces de rechange préconisées sont soulignées en gris.**

# SOMMARIO

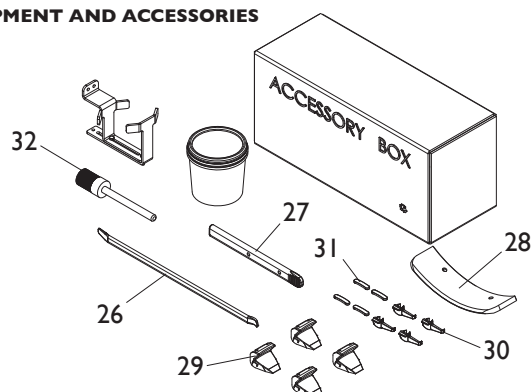
# CONTENTS

COMPLESSIVO TILTING BACK 24"	
TILTING BACK 24" OVERALL.....	4
GRUPPO BRACCIO OPERANTE	
OPERATING ARM GROUP .....	6
GRUPPO AUTOCENTRANTE 24"	
TURNTABLE GROUP 24" .....	8
IMPIANTO ELETTRICO	
ELECTRICAL SYSTEM .....	10
GRUPPO PEDALIERA	
PEDAL GROUP .....	12
GRUPPO STALLONATORE	
BEAD BREAKING GROUP .....	14

# COMPLESSIVO TILTING BACK 24" TILTING BACK 24" OVERALL

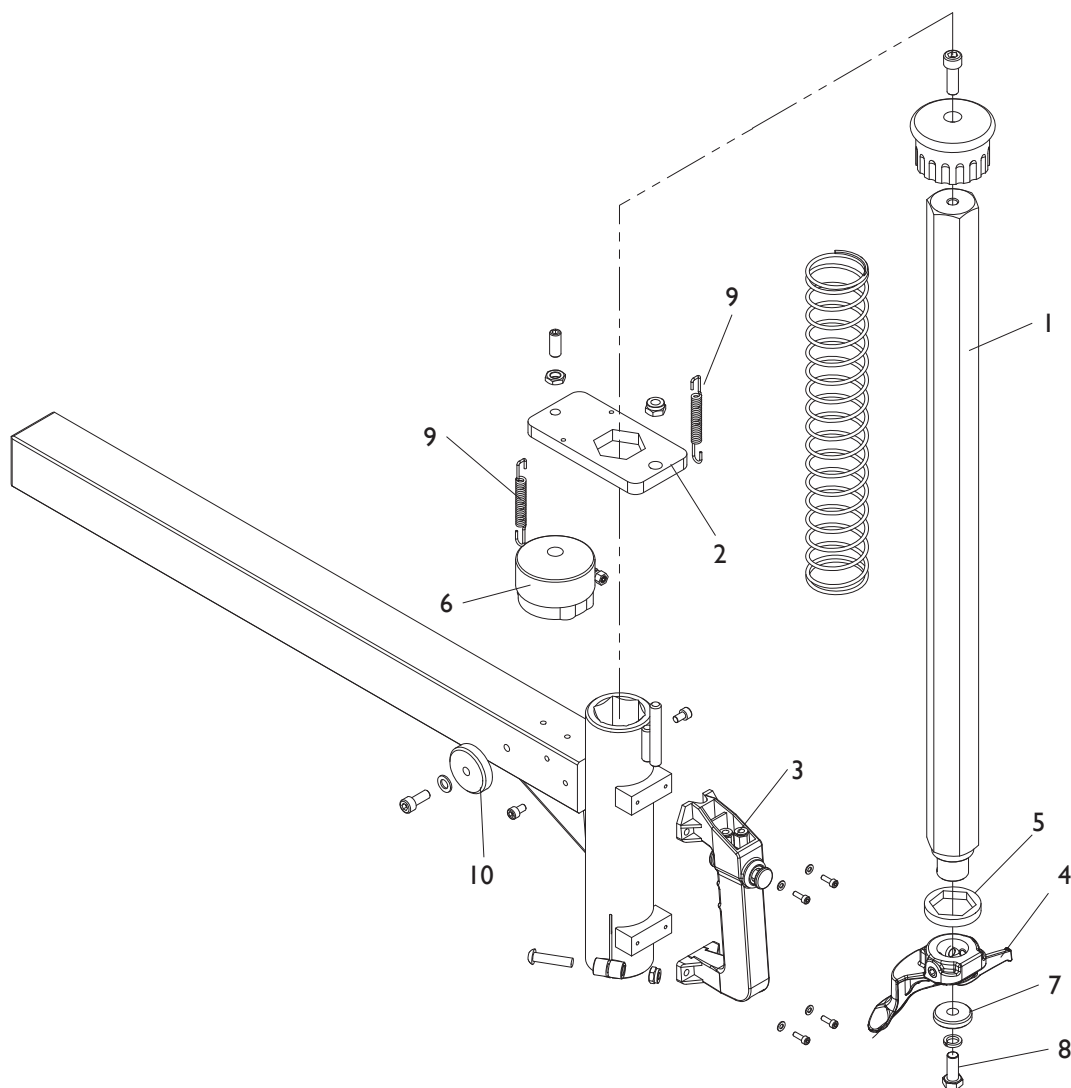


## DOTAZIONE E ACCESSORI EQUIPMENT AND ACCESSORIES



Rif. Ref.	Codice Code	Descrizione	Description
1	C-54-1000006	APPOGGIO CERCHIO	RUBBER PAD PLATE
2	GB5782-M16X100	VTE M16X100	HEXANGULAR BOLT
3	CT-C-2100000	PALETTA STALLONATORE	BEAD BREAKER BLADE
4	TC-40-1200022	PROTEZIONE IN GOMMA	RUBBER COVER
5	CT-LS-C100000	CILINDRO STALLONATORE CPL.	BEAD BREAKER CYLINDER ASSEMBLY
6	C-54-1000016	RONDELLA	WASHER
7	CT-J-2200000	RIDUTTORE <b>60HZ</b>	GEARBOX <b>60HZ</b>
7	CT-J-4200000	RIDUTTORE <b>50HZ</b>	GEARBOX <b>50HZ</b>
8	CT-Q-4000000	RACCORDO GIREVOLE <b>TI</b>	ROTATING UNION <b>TI</b>
8	CT-Q-5000000	RACCORDO GIREVOLE	ROTATING UNION
9	CT-DJ-0000008	CINGHIA <b>60HZ</b>	BELT <b>60HZ</b>
9	CT-DJ-0000007	CINGHIA <b>50HZ</b>	BELT <b>50HZ</b>
10	CT-F-2121200	FILTRO CPL.	AIR REGULATOR ASSEMBLY
11	CT-F-2000003	MANOMETRO FILTRO	PRESSURE GAUGE
12	CT-XD-1000000	CILINDRO RIBALTO PALO	PULL-OUT CYLINDER ASSEMBLY
13	C-77-1500000	CILINDRO BLOCCAGGIO ORIZZONTALE	LOCKING CYLINDER ASSY
14	CT-K-1D00000	PEDALE DI GONFIAGGIO	INFLATION PEDAL ASSEMBLY
15	C-80-1000016	PIASTRA BLOCCAGGIO ORIZZONTALE	QUADRIC LOCK PLATE WELDING
16	C-N4-1000002	COVER BRACCIO	PROTECTION COVER
17	CT-K-3400000	GRUPPO MANOMETRO	INFLATOR COVER ASSEMBLY
18	CT-K-3100004	MANOMETRO GONFIAGGIO	PRESSURE GAUGE
19	3-00427	PISTOLA <b>BAR/PSI</b>	INFLATING GAUGE <b>BAR/PSI</b>
19	3-00323	PISTOLA <b>BAR</b>	INFLATING GAUGE <b>BAR</b>
20	CT-K-2200000	VALVOLA DI SPARO	QUICK EXHAUST VALVE ASSEMBLY
21	C-N4-1000001	COVER PALO	PROTECTIVE COVER
22	C-N1-1000001	COVER PEDALE	COVER
23	C-80-1500000	VALVOLA DI GONFIAGGIO	VALVE
24	CT-Y-4121000	KIT GUARNIZIONI CILINDRO RIB. PALO	CYLINDER SEALING PARTS ASSEMBLY
25	CT-LS-B130000	KIT GUARNIZIONI CILINDRO STALL.	CYLINDER SEALING PARTS ASSEMBLY
26	C-54-8000003	LEVA	20 INCH CROWBAR
27	C-54-8000019	PROTEZIONE LEVA	CROWBAR JACKET
28	C-90-100013BP	PROTEZIONE PALETTA	BEAD BREAKER BLADE COVER
29	8-11900265	KIT 4 PROTEZIONI UNGHIA	CLAMP PROTECTON COVER (N.4 PIECES)
30	8-11900266	KIT 4 INSERTI TORRETTA	SHEATH (N.4 PIECES)
31	8-11900267	KIT 4 PASTIGLIE TORRETTA	TOOL HEAF TAIL WASHER
32	C-54-8000014BP	PENNELLO	BRUSH
33	CT-K-4100001	VALVOLA	SAFE VALVE
34	C-5B-1400000	FINECORSO	LIMIT SET
35	4-137665	PERNO FISSAGGIO COVER	FRONT COVER PIN

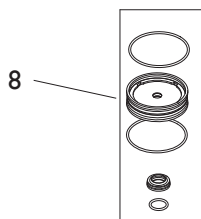
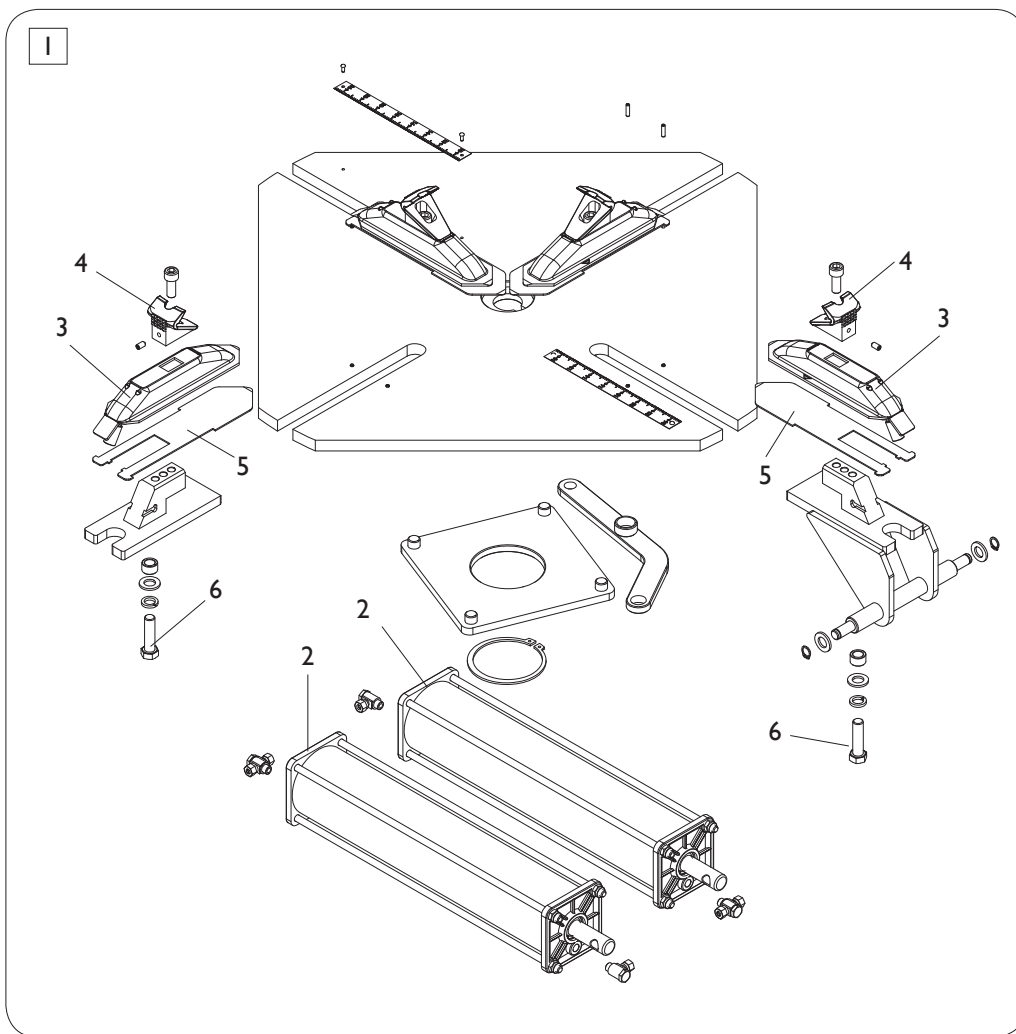
# GRUPPO BRACCIO OPERANTE OPERATING ARM GROUP



[TORNA AL COMPLESSIVO](#)  
[RETURNS TO OVERALL](#)

Rif. Ref.	Codice Code	Descrizione	Description
1	C-80-1300001	ASTA ESAGONALE	HEXANGULAR SHAFT
2	C-80-1300002	PIASTRA BLOCCAGGIO VERTICALE	HEXANGULAR LOCK PLATE
3	C-71-1330000	MANIGLIA DI BLOCCAGGIO	HANDLE CONTROLLING VALVE
4	C-54-0001000	TORRETTA	DEMOUNTING HEAD ASSEMBLY
5	C-54-1300007	TAMPONE	SHOCK ABSORBER WASHER
6	C-71-1320000	CILINDRO BLOCCAGGIO VERTICALE	LOCKING CYLINDER ASSEMBLY
7	C-54-1300008	RONDELLA	PRESS WASHER
8	GB5783-M10X25-12.9	VTE FISSAGGIO TORRETTA	HEXANGULAR BOLT
9	C-71-1300004	MOLLA	SPRING
10	C-71-1300005A	FERMO SCORREVOLE	POSITIONING BLOCK

## GRUPPO AUTOCENTRANTE 24" TURNTABLE GROUP 24"



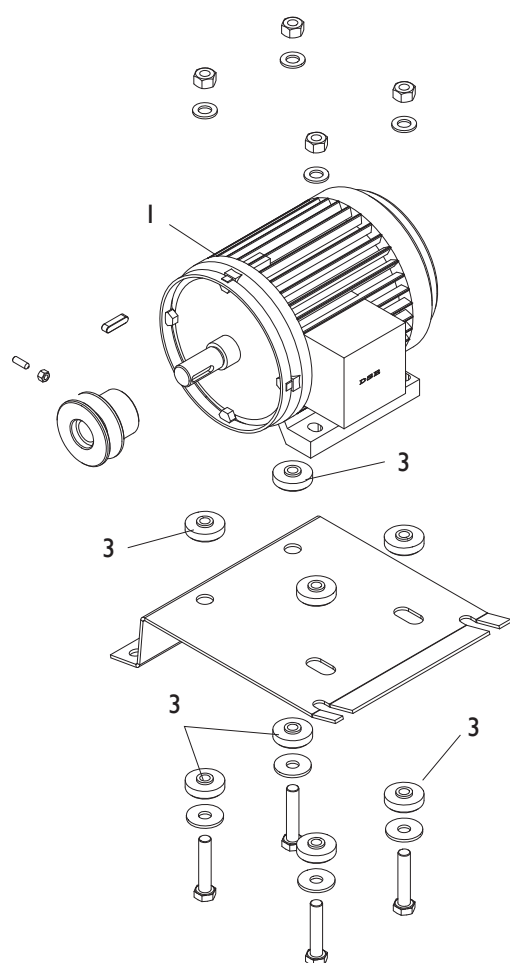
**TORNA AL COMPLESSIVO**  
**RETURNS TO OVERALL**



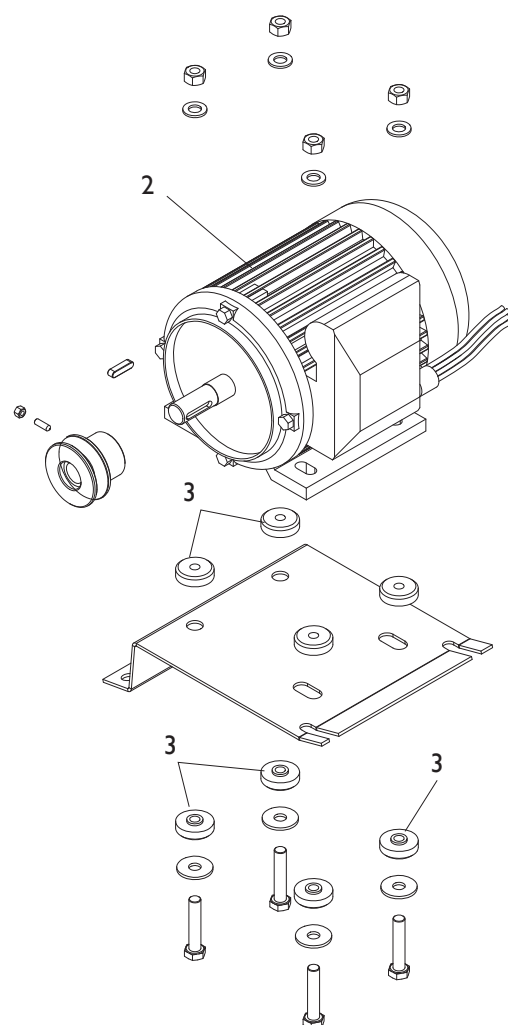
Rif. Ref.	Codice Code	Descrizione	Description
1	CT-Y-5J00000	AUTOCENTRANTE <b>TI</b>	TURNTABLE <b>TI</b>
1	CT-Y-5H00000	AUTOCENTRANTE	TURNTABLE
2	CT-Y-5010000	CILINDRO	CYLINDER ASSEMBLY
3	CT-Y-5J10000	APPOGGIO SCORREVOLE <b>TI</b>	SLIDE COVER <b>TI</b>
3	CT-Y-5H00001	APPOGGIO SCORREVOLE	SLIDE COVER
4	CT-Y-5000002	UNGHIA	CLAMP
5	CT-Y-5H00002	SLITTA COPRIASOLA	WEAR-RESISTANCE SPACER
6	GB5782-M12X45	VTE M12X45	HEXANGULAR BOLT
8	CT-Y-4121000	KIT GUARNIZIONI CILINDRO	CYLINDER SEALING PARTS ASSEMBLY

# IMPIANTO ELETTRICO ELECTRICAL SYSTEM

**VERSIONE 3Ph**  
**3Ph VERSION**



**VERSIONE 1Ph**  
**1Ph VERSION**



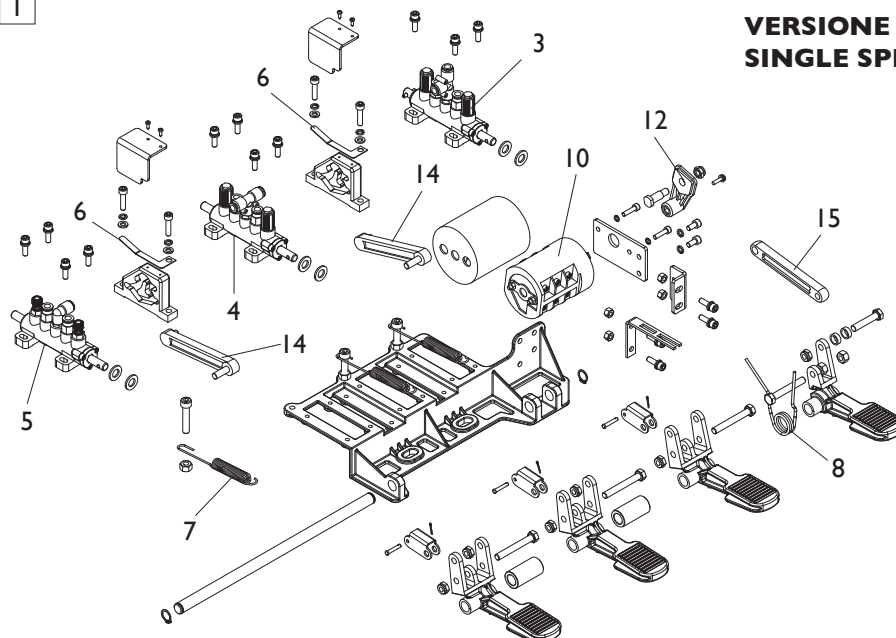
[TORNA AL COMPLESSIVO](#)  
[RETURNS TO OVERALL](#)

Rif. Ref.	Codice Code	Descrizione	Description
1	CT-DJ-0035122	MOTORE <b>400V/3/50HZ 0,75KW</b>	MOTOR <b>400V/3/50HZ 0,75KW</b>
1	CT-DJ-003C122	MOTORE <b>200-230V/3/50HZ 0,75KW</b>	MOTOR <b>200-230V/3/50HZ 0,75KW</b>
1	CT-DJ-003C222	MOTORE <b>200-230V/3/60HZ 0,75KW</b>	MOTOR <b>200-230V/3/60HZ 0,75KW</b>
1	CT-DJ-0045123	MOTORE 2V <b>400V/3/50HZ 0,85-1,1KW</b>	DOUBLE SPEED MOTOR <b>400V/3/50HZ 0,85-1,1KW</b>
2	CT-DJ-001C112Y	MOTORE <b>200-230V/1/50HZ 1,1KW</b>	MOTOR <b>200-230V/1/50HZ 1,1KW</b>
2	CT-DJ-001C212Y	MOTORE <b>200-230V/1/60HZ 1,1KW</b>	MOTOR <b>200-230V/1/60HZ 1,1KW</b>
2	CT-DJ-001D212	MOTORE <b>100-115V/1/60HZ 1,1KW</b>	MOTOR <b>100-115V/1/60HZ 1,1KW</b>
3	CT-DJ-0000002	ANTIVIBRANTE	RUBBER WASHER

# GRUPPO PEDALIERA PEDAL GROUP

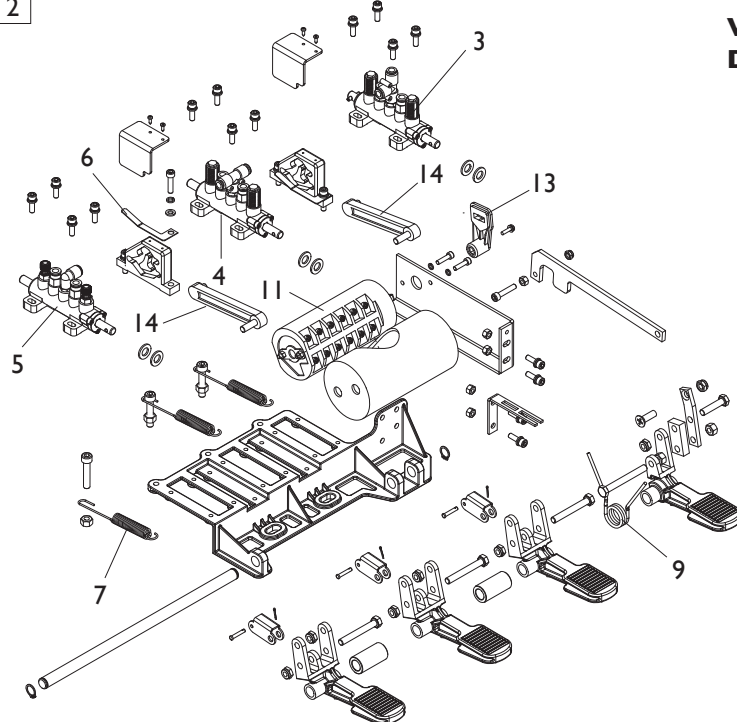
1

**VERSIONE 1 VELOCITA`  
SINGLE SPEED VERSION**



2

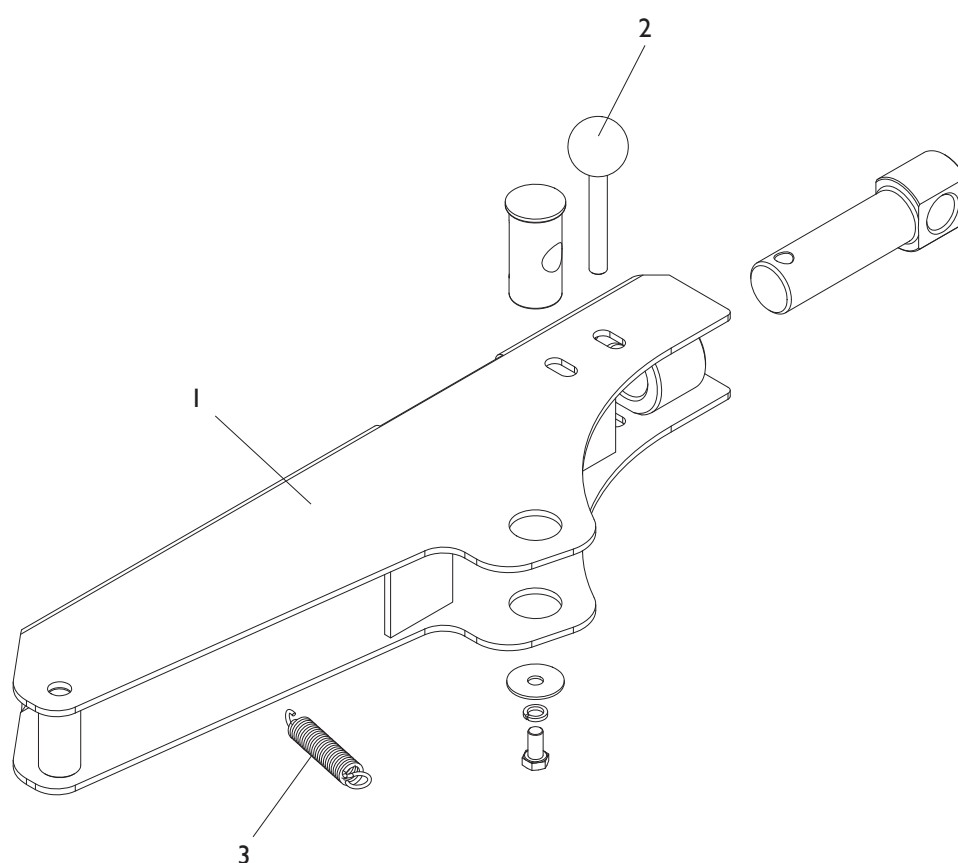
**VERSIONE 2 VELOCITA`  
DOUBLE SPEED VERSION**



[TORNA AL COMPLESSIVO](#)  
[RETURNS TO OVERALL](#)

Rif. Ref.	Codice Code	Descrizione	Description
1	CT-D-A100000	PEDALIERA <b>1 VELOCITA`</b>	PEDAL (USED WITH <b>SINGLE SPEED</b> MOTOR)
2	CT-D-B100000	PEDALIERA <b>2 VELOCITA`</b>	PEDAL (USED WITH <b>DOUBLE SPEED</b> MOTOR)
3	CT-D-0010000	RUBINETTO COMANDO <b>STALLONAT.</b>	<b>BEAD BREAKER</b> COMMAND VALVE
4	CT-D-0014000	RUBINETTO COMANDO <b>AUTOCENTR.</b>	<b>TURNTABLE</b> COMMAND VALVE
5	CT-D-0015000	RUBINETTO COMANDO <b>RIBALTO PALO</b>	<b>TILTING ARM</b> COMMAND VALVE
6	CT-D-2100004	MOLLA	SPRING PLATE
7	CT-D-5100007	MOLLA	SPRING
8	CT-D-2100002	MOLLA PEDALIERA <b>1 VELOCITA`</b>	SPRING (USED WITH <b>SINGLE SPEED</b> MOTOR)
9	CT-D-7100001	MOLLA PEDALIERA <b>2 VELOCITA`</b>	SPRING (USED WITH <b>DOUBLE SPEED</b> MOTOR)
10	CT-D-1100018	INVERTITORE <b>1 VELOCITA`</b>	SWITCH (USED WITH <b>SINGLE SPEED</b> MOTOR)
11	CT-D-7100007	INVERTITORE <b>2 VELOCITA`</b>	SWITCH (USED WITH <b>DOUBLE SPEED</b> MOTOR)
12	CT-D-1100010	LEVA <b>1 VELOCITA`</b>	LEVER (USED WITH <b>SINGLE SPEED</b> MOTOR)
13	CT-D-7100008	LEVA <b>2 VELOCITA`</b>	LEVER (USED WITH <b>DOUBLE SPEED</b> MOTOR)
14	CT-D-1100008	BIELLA	CAM CONNECTING ROD
15	CT-D-2100011	BIELLA	CONNECTION ROD

## GRUPPO STALLONATORE BEAD BREAKING GROUP



[TORNA AL COMPLESSIVO](#)  
[RETURNS TO OVERALL](#)

Rif. Ref.	Codice Code	Descrizione	Description
1	CT-B-C100000	BRACCIO STALLONATORE	BEAD BREAKER ARM
2	CT-B-A200000	PERNO	PIN SHAFT
3	CT-B-2000002	MOLLA	SPRING

Code 4-103102

Production date : 01 / 2019

Il disegno è realizzato con tutti i particolari ma solo quelli codificati sono forniti come ricambi. L'Azienda si riserva la facoltà di apportare modifiche senza preavviso.

The drawing shows all parts but only the coded parts are supplied as spares. The Company reserves the right to make modifications without prior notice.