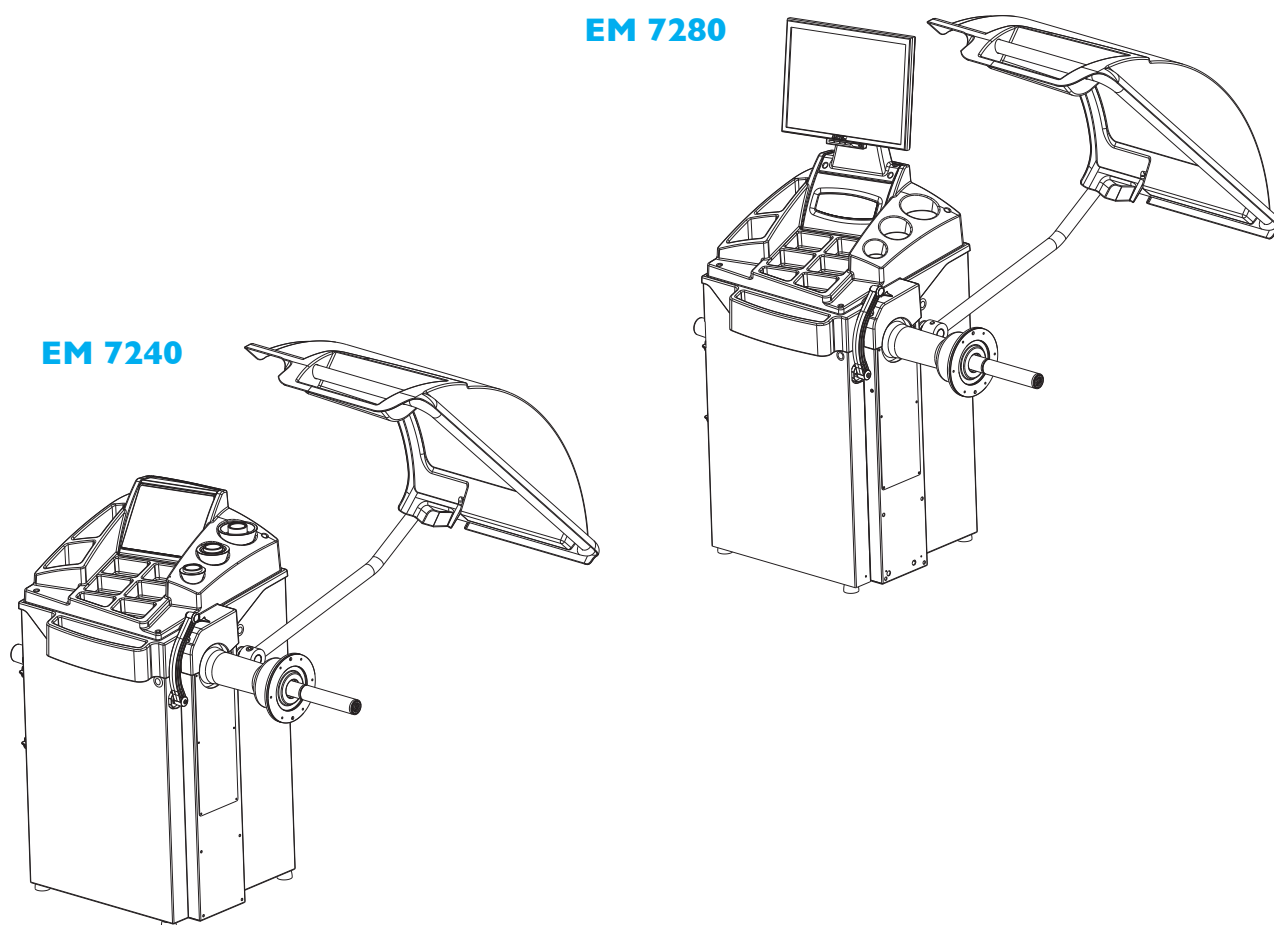


# EM 7240

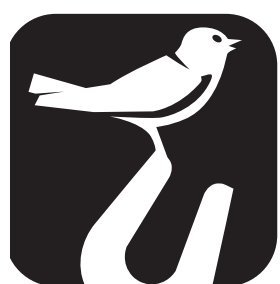
# EM 7280

Pezzi di ricambio / Spare parts list



Code: 4-108645E

Production date: 09 / 2014



# CORGHI



## I

**Sul presente documento sono stati evidenziati con colore grigio i ricambi consigliati e indicati in grassetto i codici che sono variati rispetto a quelli riportati nella precedente versione del 05/13**

## EN

**In this document, the recommended spare parts have been highlighted in gray, while in bold you find those codes which are different if compared with the previous version dated 05/13**

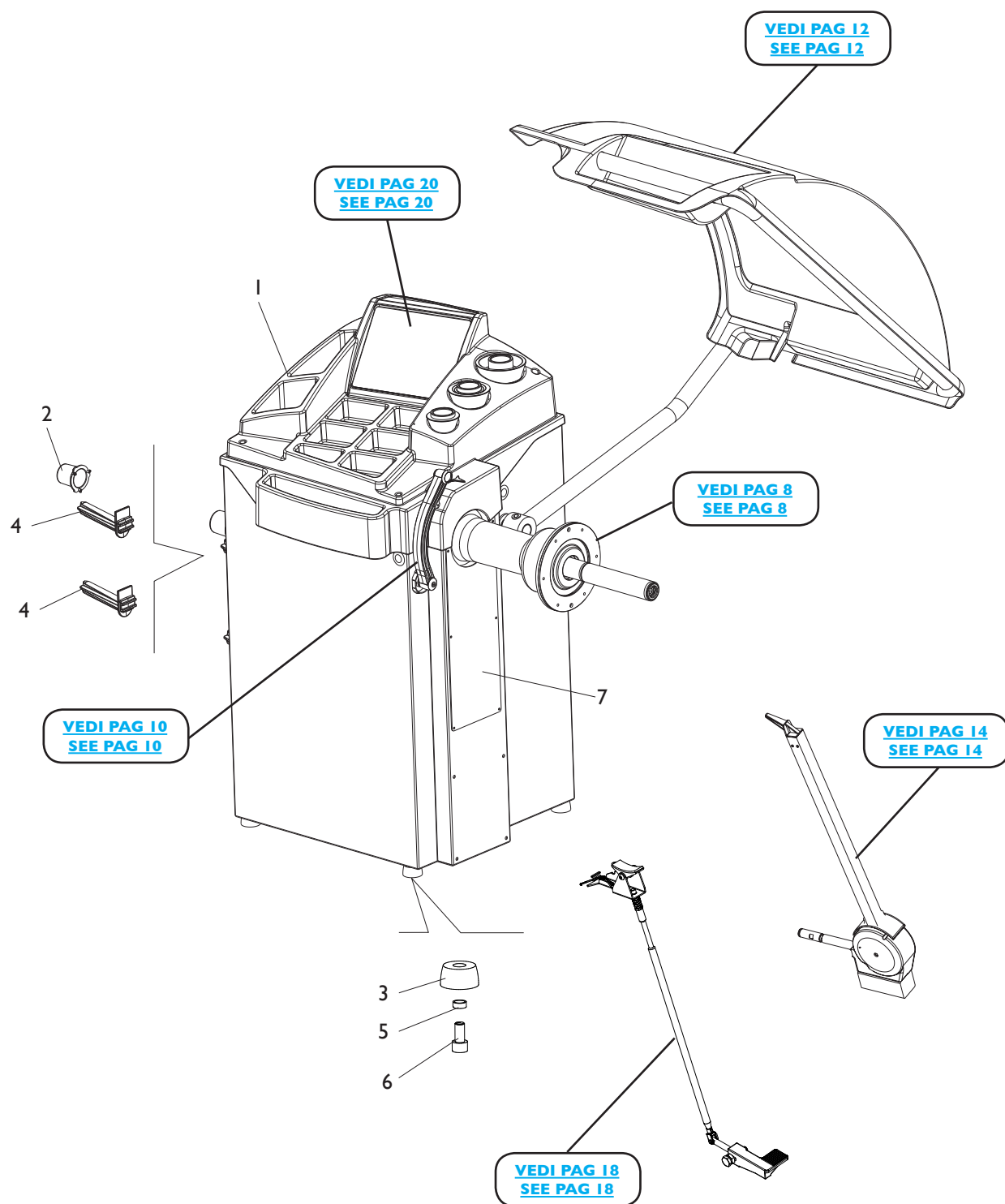
## DE

**Im vorliegenden Dokument wurden die empfohlenen Ersatzteile in grauer Farbe hervorgehoben; die Teilenummern in Fettdruck haben sich beziehend auf die vorherige Version vom 05/13 geändert.**

## FR

**Dans ce document, les pièces de rechange préconisées sont soulignées en gris, tandis que les références différentes par rapport à la version précédente du 05/13 sont en gras**

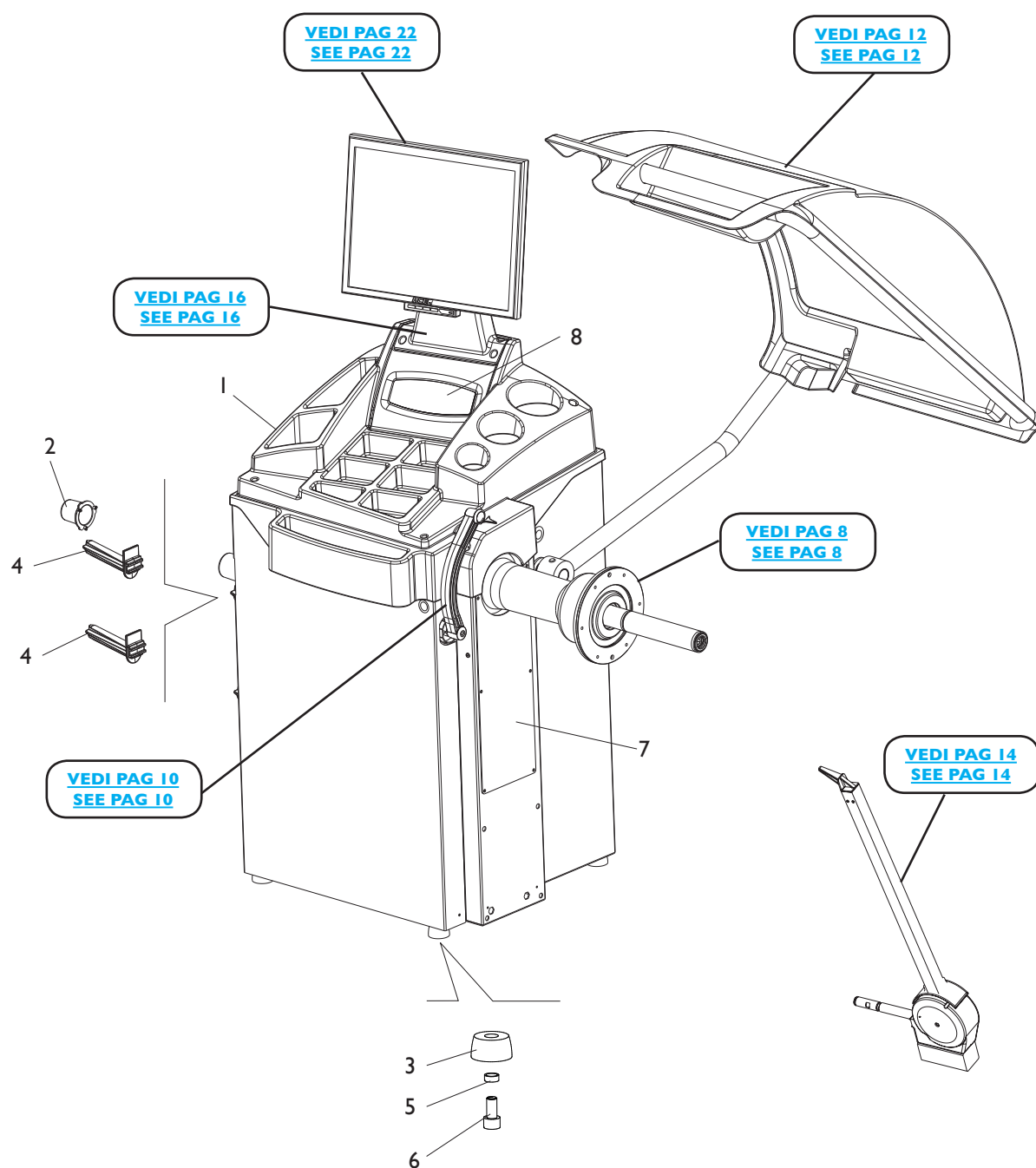
# COMPLESSIVO EM 7240 EM 7240 OVERALL



Rif. Ref.	Codice Code	Descrizione	Description
1	4-108650/90	COPERCHIO PORTAPESI	WEIGHT HOLDERS COVER
2	4-108675	CARTER CHIUSURA RILEVATORE	DETECTOR COVER
3	460029	PIEDE DI APPOGGIO	FOOT
4	438319	PORTAFLANGE	FLANGE SUPPORT
5	360095	<b>DISTANZIALE PIEDE</b>	<b>FOOT SPACER</b>
6	2-01985	<b>VTCEI M10X20</b>	<b>CIRC. SOCKET HEAD SCREW M10X20</b>
7	4-108599	PANNELLO DI CHIUSURA	PANEL

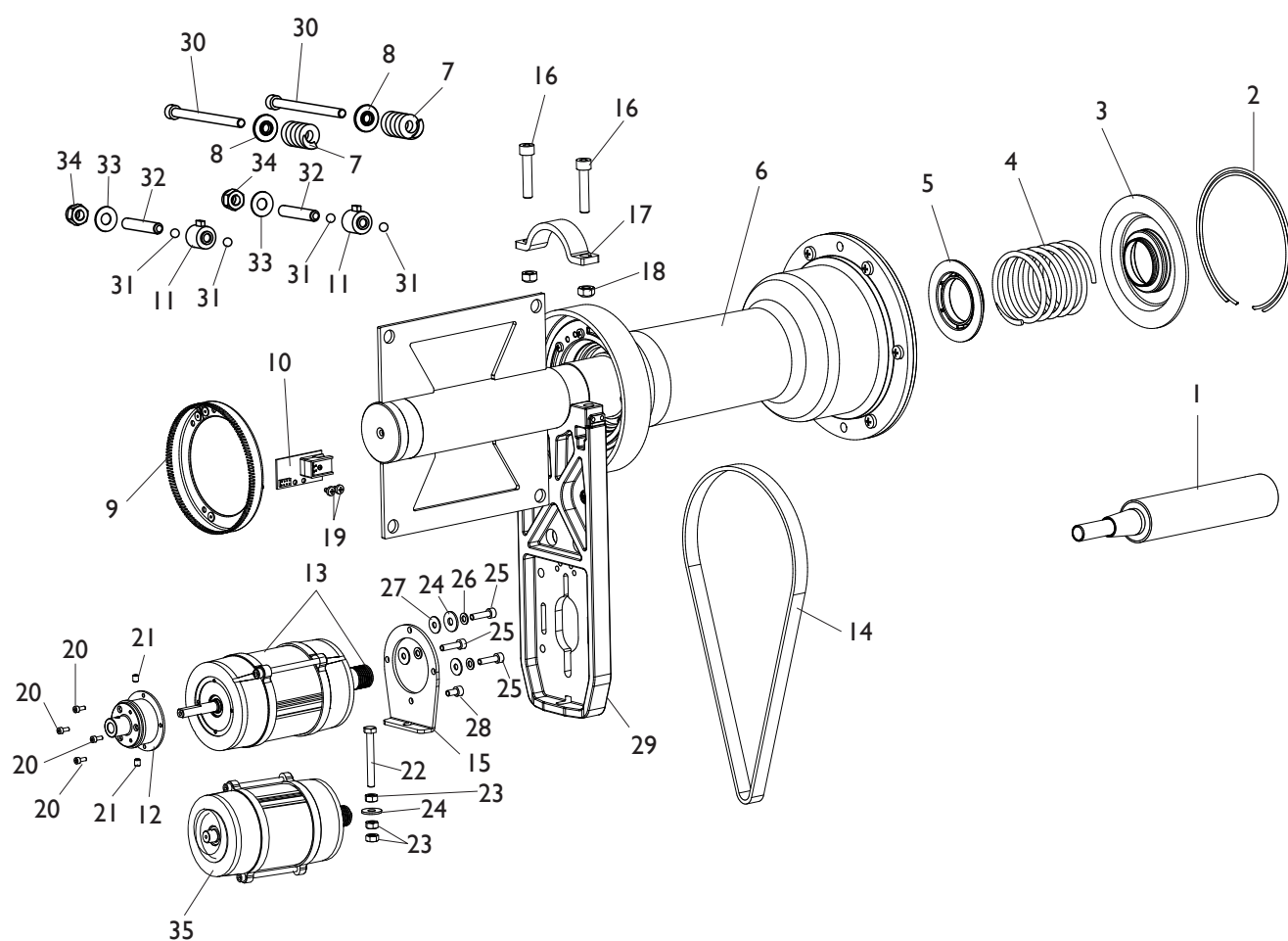
# COMPLESSIVO EM 7280

## EM 7280 OVERALL



Rif. Ref.	Codice Code	Descrizione	Description
1	4-108778/90	COPERCHIO PORTAPESI	WEIGHT HOLDERS COVER
2	4-108675	CARTER CHIUSURA RILEVATORE	DETECTOR COVER
3	460029	PIEDE DI APPOGGIO	FOOT
4	438319	PORTAFLANGE	FLANGE SUPPORT
<b>5</b>	<b>360095</b>	<b>DISTANZIALE PIEDE</b>	<b>FOOT SPACER</b>
<b>6</b>	<b>2-01985</b>	<b>VTCEI M10X20</b>	<b>CIRC. SOCKET HEAD SCREW M10X20</b>
7	4-108599	PANNELLO DI CHIUSURA	PANEL
8	5-100030	TASTIERA	KEYBOARD

# GRUPPO OSCILLANTE OSCILLATING GROUP

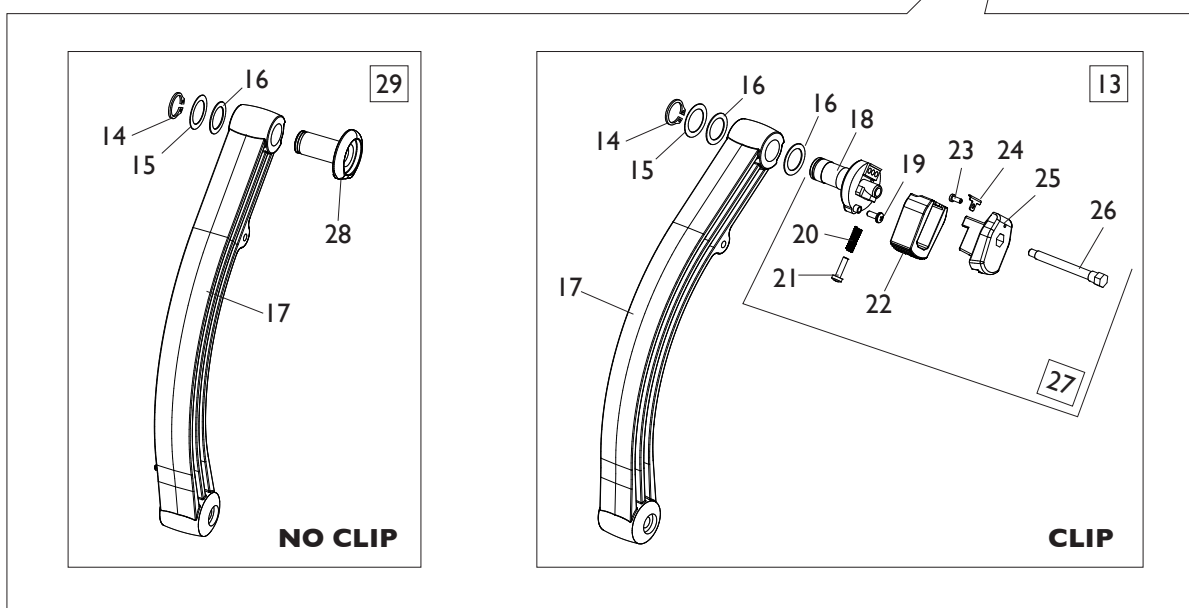
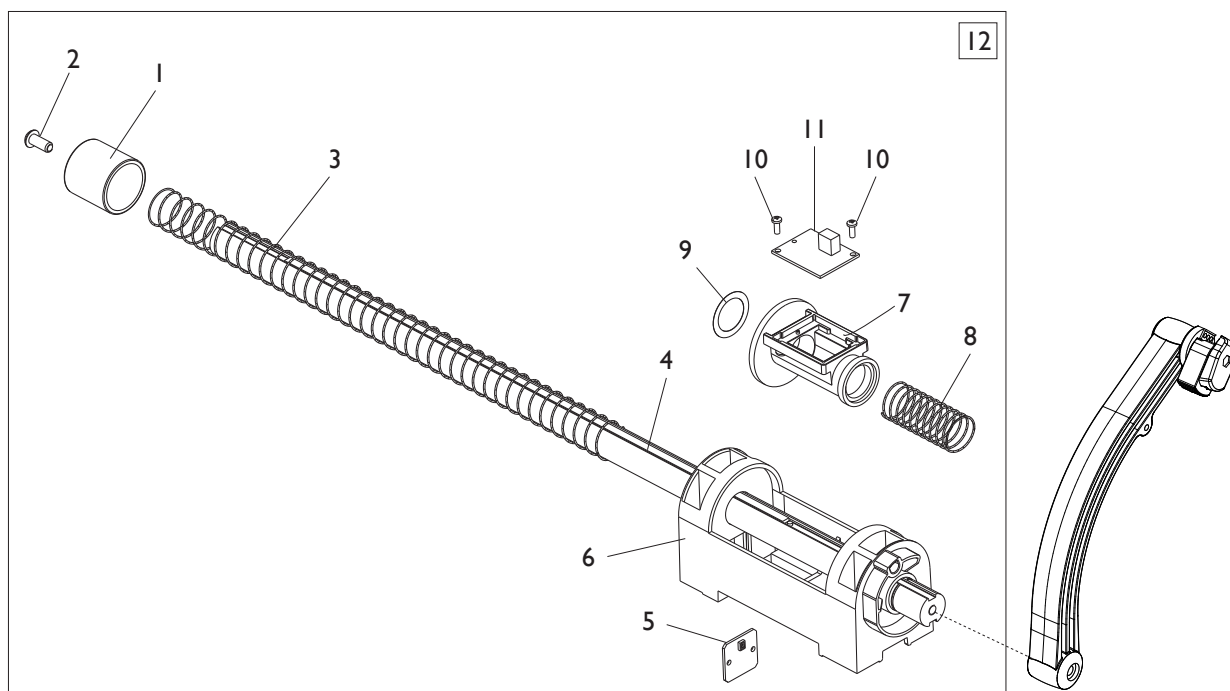


[TORNA AL COMPLESSIVO](#)  
[RETURNS TO OVERALL](#)



Rif. Ref.	Codice Code	Descrizione	Description
1	5-101514	MOZZO BLOCCAGGIO RUOTA	LOCKING WHEEL HUB
2	4-101740	ANELLO D.127,5X2,5	RING D.127,5X2,5
3	4-104590	DISCO PREMI MOLLA D.40	DISC SPING COMPRESSOR D.40
4	4-104588	MOLLA D.4,8X66X121	SPRING D.4,8X66X121
5	4-104589	DISCO PORTA MOLLA D.40	DISC HOLDER SPRING D.40
6	5-103258	GRUPPO OSCILLANTE	OSCILLATING GROUP
7	4-104652	MOLLA D.6X25X41	SPRING D.6X25X41
8	4-104650	BOCCOLA POSTERIORE MOLLA PICK UP	BUSH REAR SPRING PICK UP
9	5-102161	KIT DISCO ENCODER	ENCODER DISK
10	5-101447	SK ENCODER	ENCODER P.C. BOARD
11	5-103533	PICK-UP	PICK-UP
12	5-103692	FRENO CON MOZZO	BRAKE ASSEMBLY
13	5-100172	MOTORE AC 230V ( <b>VERS. AUTOFR.</b> )	MOTOR 230V ( <b>BRAKE VERSION</b> )
13	5-100180	MOTORE AC 115V ( <b>VERS. AUTOFR.</b> )	MOTOR 115V ( <b>BRAKE VERSION</b> )
14	3-03052	CINGHIA	BELT
<b>15</b>	<b>4-104598</b>	<b>FLANGIA MOTORE</b>	<b>MOTOR FLANGE</b>
<b>16</b>	<b>2-02008</b>	<b>VTCEI 1/2F M8X40</b>	<b>CIRC. SOCKET HEAD SCREW 1/2F M8X40</b>
<b>17</b>	<b>4-104591</b>	<b>FLANGIA SUPPORTO MOTORE</b>	<b>MOTOR SUPPORT FLANGE</b>
<b>18</b>	<b>421349</b>	<b>DADO ES. A. M8</b>	<b>AUTOLOCKING HEXAGON NUT M8</b>
<b>19</b>	<b>2-03425</b>	<b>VATCCIC M4X6</b>	<b>SCREW TAPPING HEAD CUTTING CIRC. CROSS M4X6</b>
<b>20</b>	<b>2-02805</b>	<b>VTCEI M3X8</b>	<b>CIRCULAR SOCKET HEAD SCREW M3X8</b>
<b>21</b>	<b>2-02922</b>	<b>VSTEI P.PA. M5X6</b>	<b>CSK SCREW SOCKET M5X6</b>
<b>22</b>	<b>2-03427</b>	<b>VTE M6X50</b>	<b>HEXAGON HEAD SCREW M6X50</b>
<b>23</b>	<b>2-00146</b>	<b>DADO ES.N. M6</b>	<b>NORMAL HEXAGON NUT M6</b>
<b>24</b>	<b>2-00679</b>	<b>ROSETTA D.6,6X18X1,5</b>	<b>WASHER D.6,6X18X1,5</b>
<b>25</b>	<b>2-03003</b>	<b>VTCEI M5X20</b>	<b>CIRCULAR SOCKET HEAD SCREW M5X20</b>
<b>26</b>	<b>2-71546</b>	<b>ROSETTA D.5</b>	<b>WASHER D.5</b>
<b>27</b>	<b>2-00713</b>	<b>ROSETTA D.5,5X15X1,6</b>	<b>WASHER D.5,5X15X1,6</b>
<b>28</b>	<b>2-00891</b>	<b>VTCEI M5X10</b>	<b>CIRCULAR SOCKET HEAD SCREW M5X10</b>
<b>29</b>	<b>4-106938</b>	<b>SUPPORTO MOTORE</b>	<b>MOTOR SUPPORT</b>
<b>30</b>	<b>2-03421</b>	<b>VTCEI M8X110</b>	<b>CIRCULAR SOCKET HEAD SCREW M8X110</b>
<b>31</b>	<b>2-00243</b>	<b>SFERA 5/16"</b>	<b>SPHERE 5/16"</b>
<b>32</b>	<b>2-03600</b>	<b>VSTEI P.CP. M10X45</b>	<b>CSK SCREW SOCKET M10X45</b>
<b>33</b>	<b>424993</b>	<b>MOLLA D.10,2X23X1,25</b>	<b>SPRING D.10,2X23X1,25</b>
<b>34</b>	<b>2-01019</b>	<b>DADO ES.N.A. M10</b>	<b>NORMAL AUTOLOCKING HEX. NUT M10</b>
35	5-103200	MOTORE AC 230V ( <b>VERS. STD</b> )	MOTOR 230V ( <b>STD VERSION</b> )
35	5-103201	MOTORE AC 115V ( <b>VERS. STD</b> )	MOTOR 115V ( <b>STD VERSION</b> )

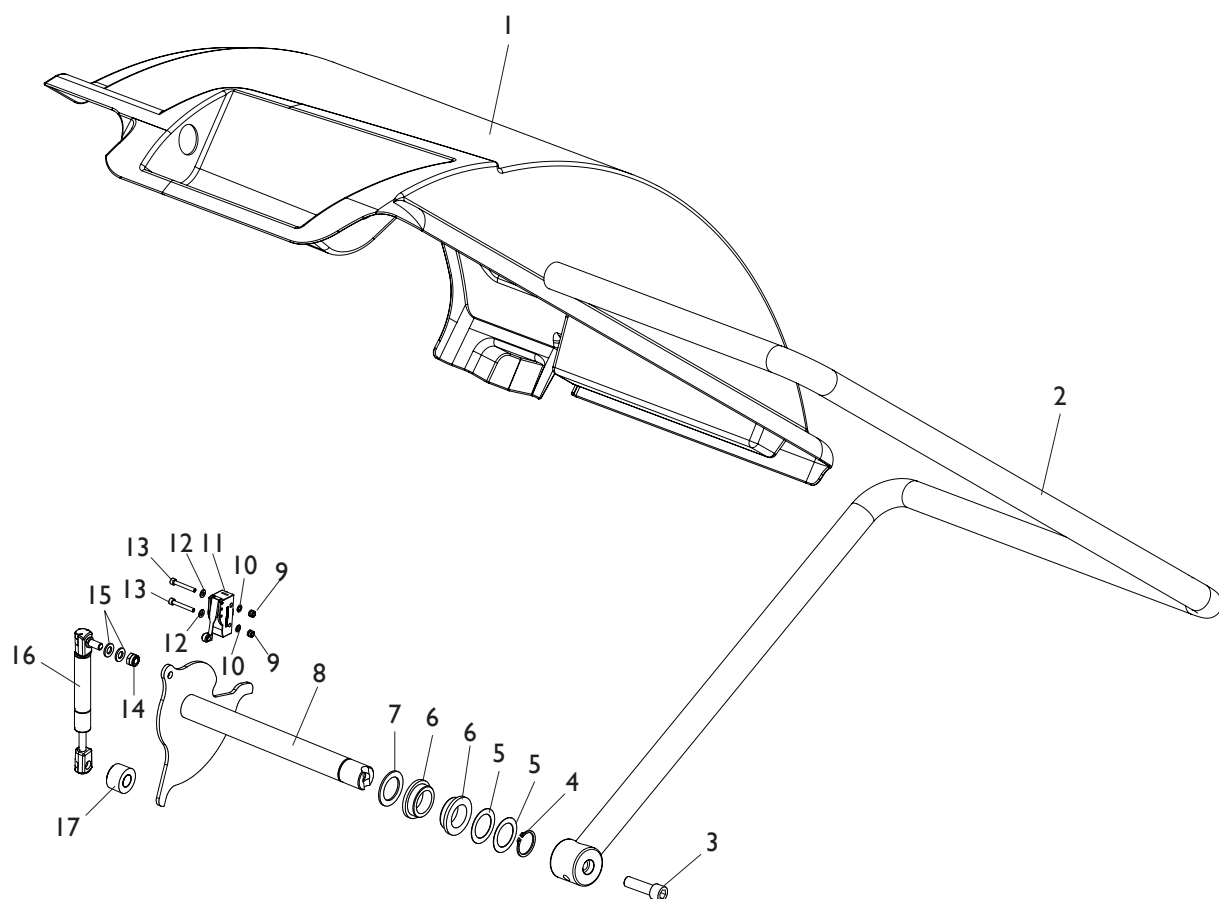
# GRUPPO RILEVATORE INTERNO INTERNAL DETECTOR GROUP



[TORNA AL COMPLESSIVO](#)  
[RETURNS TO OVERALL](#)

Rif. Ref.	Codice Code	Descrizione	Description
1	4-108594	BUSSOLA FINECORSO MOLLA D.33,5X33,9	BUSH STOP SPRING D.33,5X33,9
2	2-02174	VTBEI M6X16	ROUNDED HEAD SCREW SOCKET M6X16
3	4-108611	MOLLA D.0,9X22,6X650	SPRING D.0,9X22,6X650
4	5-103203	ASTA+MAGN.+TARGH. ( <b>VERS. DIGITALE</b> )	ROD ASSEMBLY ( <b>DIGITAL VERSION</b> )
4	5-104662	ASTA+TARGH. ( <b>VERS. MANUALE</b> )	ROD ASSEMBLY ( <b>MANUAL VERSION</b> )
5	5-103204	SK ENCODER REFLEX ( <b>VERS. DIGITALE</b> )	REFLEX P.C. BOARD ( <b>DIGITAL VERSION</b> )
6	4-108592	SUPPORTO RILEVATORE	DETECTOR SUPPORT
7	4-108799	SUPPORTO CON ENCODER	SUPPORT WITH ENCODER
8	4-108612	MOLLA D.1,5X24,3X60	SPRING D.1,5X24,3X60
9	4-103075	RONDELLA D.20,2X28X0,1	WASHER D.20,2X28X0,1
<b>10</b>	<b>2-02071</b>	<b>VATCCIC M.3X8</b>	<b>SCREW HEAD CUTTING CIRC. CROSS M.3X8</b>
11	5-103205	SCHEDA MAGNETI	MAGNET P.C. BOARD
12	5-100965	RILEVATORE <b>DIGITALE</b> COMPLETO	<b>DIGITAL</b> DETECTOR ASSEMBLY
12	5-104342	RILEVATORE <b>MANUALE</b> COMPLETO	<b>MANUAL</b> DETECTOR ASSEMBLY
<b>13</b>	<b>5-103440</b>	<b>LEVA CON TERMINALE PORTAP. CLIP</b>	<b>CLIP LEVER END WEIGHT HOLDERS</b>
<b>14</b>	<b>2-00832</b>	<b>ANELLO D.13</b>	<b>SEEGER D.13</b>
<b>15</b>	<b>2-03063</b>	<b>RONDELLA D.14X20X0,3</b>	<b>WASHER D.14X20X0,3</b>
16	450073	RONDELLA D.13	WASHER D.13
17	4-108606	LEVA	LEVER
<b>18</b>	<b>4-103496</b>	<b>TERMINALE PORTAPESI FISSO</b>	<b>FIXED END WEIGHT HOLDER</b>
<b>19</b>	<b>463632</b>	<b>VTBIC FLANGIATA D.3X8</b>	<b>HEAD SCREW CROSS CUT D.3X8</b>
<b>20</b>	<b>407593</b>	<b>MOLLA D.4,5X0,5X17</b>	<b>SPRING D.4,5X0,5X17</b>
<b>21</b>	<b>2-02072</b>	<b>VTCIC M3X12</b>	<b>HEAD SCREW CROSS CIRCULAR CONE M3X12</b>
<b>22</b>	<b>449342</b>	<b>PULSANTE ESPULSIONE PESO</b>	<b>WEIGHT BUTTON</b>
<b>23</b>	<b>2-02203</b>	<b>VATCCIC D.2,5X6</b>	<b>SCREW HEAD CUTTING CIRC. CROSS M.2,5X6</b>
<b>24</b>	<b>4-101272</b>	<b>LAMIERA TRATT. PESO</b>	<b>PLATE</b>
<b>25</b>	<b>4-104050</b>	<b>TERMINALE PORTAPESI MOBILE</b>	<b>MOBILE END WEIGHT HOLDERS</b>
<b>26</b>	<b>4-104670</b>	<b>PERNO D.4,9X49,8</b>	<b>PIN D.4,9X49,8</b>
27	5-101462	TERMINALE PORTAPESI <b>CLIP</b>	<b>CLIP</b> TERMINAL WEIGHT HOLDERS
28	4-108607	TERMINALE PORTAPESI <b>NO CLIP</b>	<b>NO CLIP</b> TERMINAL WEIGHT HOLDERS
<b>29</b>	<b>5-103299</b>	<b>LEVA CON TERM. PORTAP. NO CLIP</b>	<b>NO CLIP LEVER END WEIGHT HOLDERS</b>

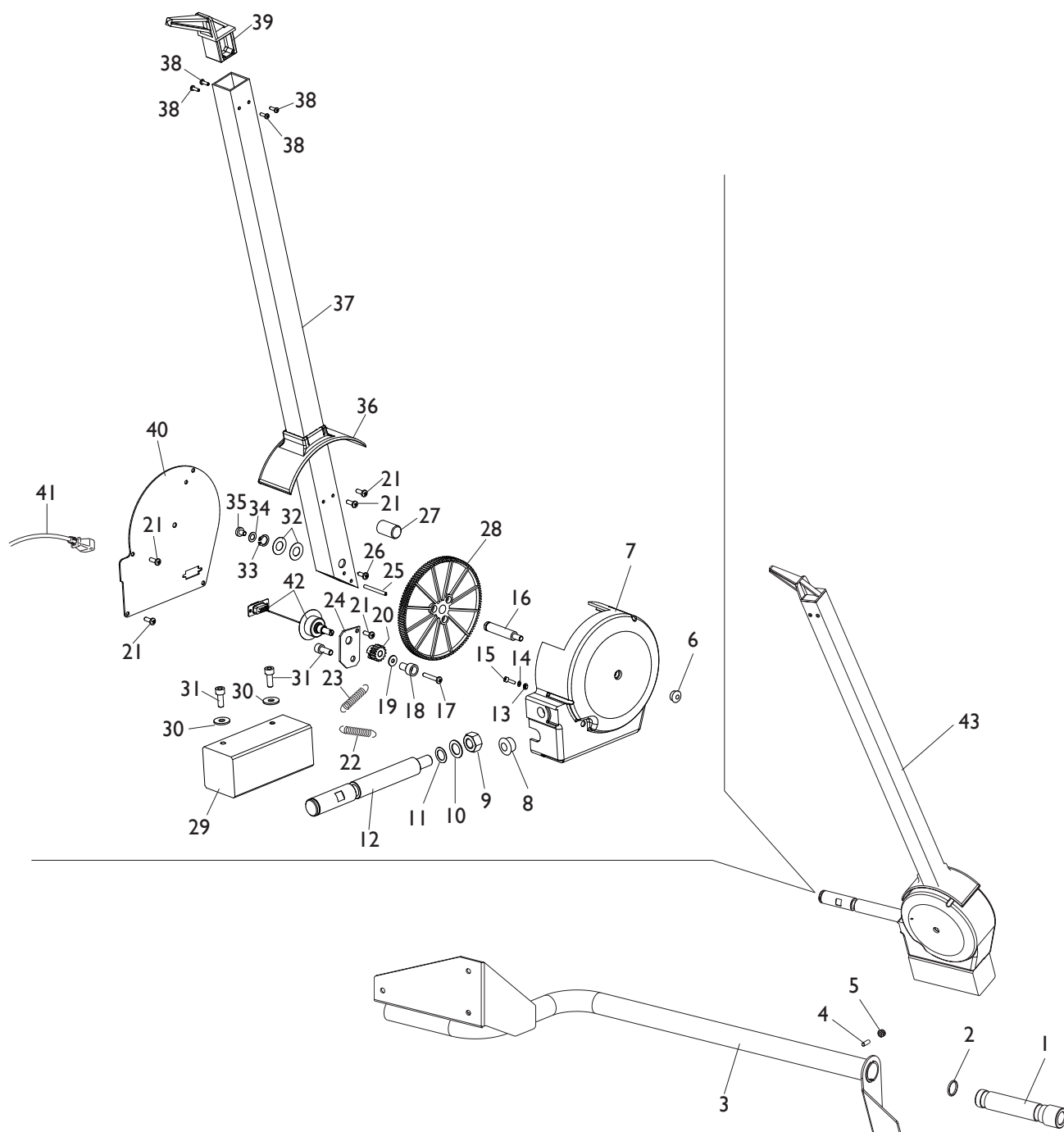
# GRUPPO PROTEZIONE PROTECTION GROUP



[TORNA AL COMPLESSIVO](#)  
[RETURNS TO OVERALL](#)

Rif. Ref.	Codice Code	Descrizione	Description
1	4-105459/90	PROTEZIONE RUOTA 44"	WHEEL PROTECTION 44"
2	5-103067	TUBO SUPPORTO PROTEZIONE	PROTECTION SUPPORT
3	2-03001	<b>VTCEI M12X40</b>	<b>CIRC. SOCKET HEAD SCREW M12X40</b>
4	2-01110	<b>SEEGER D.28</b>	<b>SEEGER D.28</b>
5	436721	<b>RONDELLA D.29X42X0,5</b>	<b>WASHER D.29X42X0,5</b>
6	433637	BOCCOLA	BUSH
7	4-109006	RONDELLA D.28,5X42X2	WASHER D.28,5X42X2
8	4-109007	PERNO PROTEZIONE	PROTECTION PIN
9	2-02883	<b>DADOES.B.A. M4</b>	<b>LOW AUTOLOCKING HEX. NUT M4</b>
10	2-00196	<b>RONDELLA D.4</b>	<b>WASHER D.4</b>
11	4-109005	MICRO I6A	MICRO I6A
12	2-00209	<b>RONDELLA D.4</b>	<b>WASHER D.4</b>
13	2-02078	<b>VTCEI 1/2F M4X30</b>	<b>CIRC. SOCKET HEAD SCREW 1/2F M4X30</b>
14	2-01137	<b>DADO ES.B.A M8</b>	<b>LOW AUTOLOCKING HEXAGON NUT M8</b>
15	2-00212	<b>RONDELLA D.8</b>	<b>WASHER D.8</b>
16	4-109117	MOLLA GAS	GAS SPRING
17	4-118425	<b>TAMPONE D.30X13</b>	<b>PAD D.30X13</b>

# GRUPPO RILEVATORE ESTERNO EXTERNAL DETECTOR GROUP

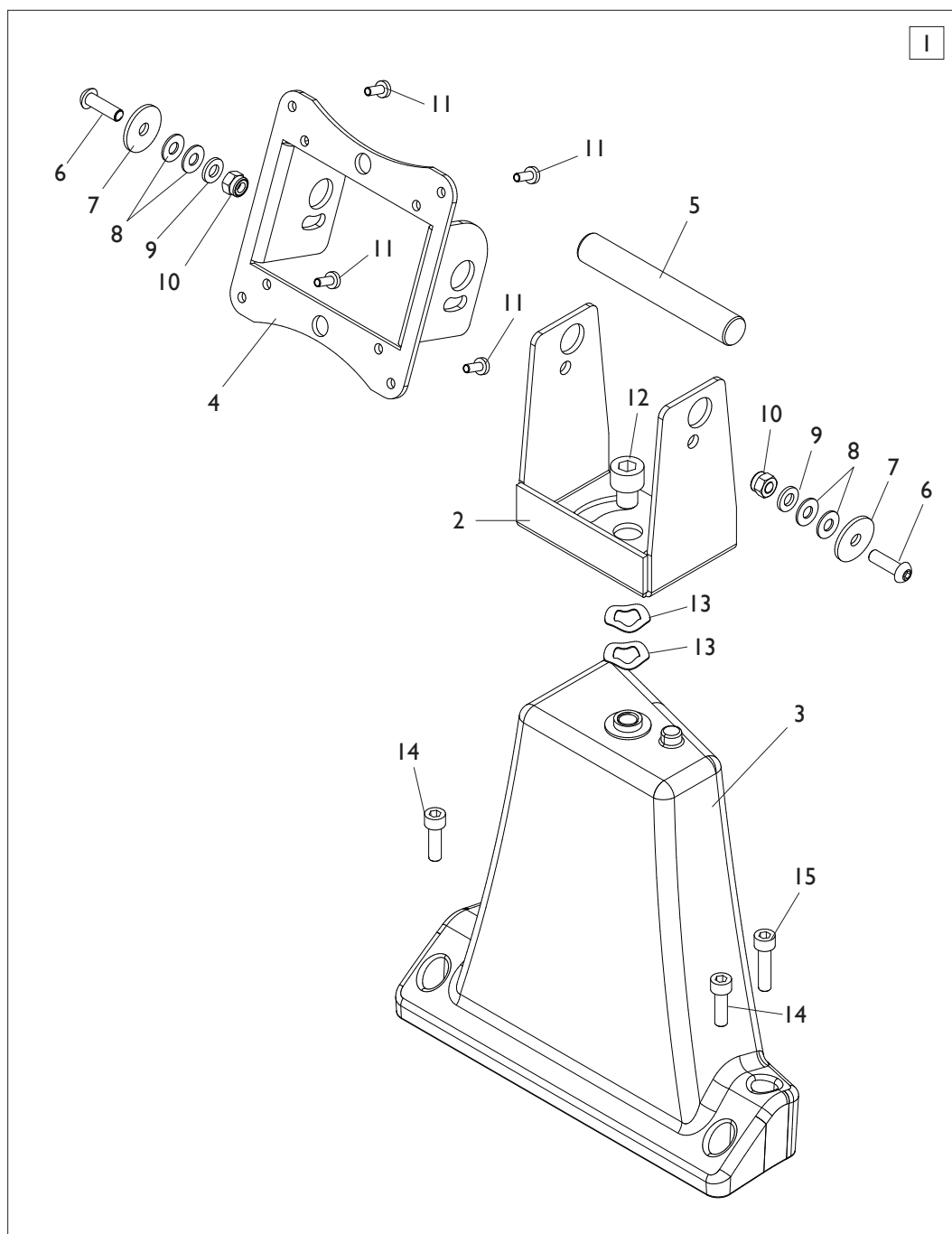


[TORNA AL COMPLESSIVO](#)  
[RETURNS TO OVERALL](#)

Rif. Ref.	Codice Code	Descrizione	Description
1	4-104994	BOCCOLA DISTANZIALE TASTATORE	SPACER
2	421590	GUARNIZIONE OR D.20,24X2,62	O-RING D.20,24X2,62
2	430604	GUARNIZIONE OR D.21,95X1,78	O-RING D.21,95X1,78
3	4-104813	SUPPORTO RILEVATORE	DETECTOR SUPPORT
4	<b>2-80133</b>	<b>VSTEI M6X10</b>	<b>CSK SCREW SOCKET M6X10</b>
5	<b>2-01979</b>	<b>DADO ES.A. M6</b>	<b>AUTOLOCKING HEXAGON NUT M6</b>
6	454472	TAPPO TONDO D.11,1	CAP D.11,1
7	454457	CORPO RILEVATORE	DETECTOR BODY
8	<b>4-101337</b>	<b>TAPPO TONDO D.15,9</b>	<b>CAP D.15,9</b>
9	<b>2-02313</b>	<b>DADO ES M12</b>	<b>HEXAGON NUT M12</b>
10	<b>2-71545</b>	<b>ROSETTA D.12</b>	<b>WASHER D.12</b>
11	<b>309197</b>	<b>RONDELLA D.12X25X0,6</b>	<b>WASHER D.12X25X0,6</b>
12	353575	PERNO ROTAZIONE	ROTATING PIN
13	<b>2-00142</b>	<b>DADO ES. M3</b>	<b>HEXAGON NUT M3</b>
14	<b>2-71547</b>	<b>ROSETTA D.3</b>	<b>WASHER D.3</b>
15	<b>2-00921</b>	<b>VTCEI M3X10</b>	<b>CIRCULAR SOCKET HEAD SCREW M3X10</b>
16	353574	PERNO FULCRO BRACCIO	FULCRUM PIN
17	<b>2-02231</b>	<b>VATCCIC M.4X25</b>	<b>SCREW TAPPING HEAD CIRCULAR CROSS M.4X25</b>
18	353580	PERNO DISTANZIALE M/F D.13X20	SPACER PIN D.13X20
19	<b>2-91679</b>	<b>ROSETTA D.4X12</b>	<b>WASHER D.4X12</b>
20	449326	PIGNONE	PINION
21	<b>2-02095</b>	<b>VATCCIC M.4X12</b>	<b>SCREW TAPPING HEAD CIRCULAR CROSS M.4X12</b>
22	455120	MOLLA TRAZIONE D.10X1,2X34,6	SPRING D.10X1,2X34,6
23	454239	MOLLA TRAZIONE D.9X0,8X31,4	SPRING D.9X0,8X31,4
24	353573	LAMIERA FISSAGGIO POTENZIOMETRO	POTENTIOMETER PLATE
25	<b>2-01028</b>	<b>SPINA D.3,5X35</b>	<b>PLUG D.3,5X35</b>
26	<b>2-01973</b>	<b>VATBIC M.4,2X19</b>	<b>ROUNDED HEAD SCREW M.4,2X19</b>
27	353581	FERMO ROTAZIONE	ROTATION STOP
28	453579	INGRANAGGIO Z.116	GEAR Z.116
29	353577	CONTRAPPESO	POIND
30	<b>2-00679</b>	<b>ROSETTA D.6,6X18X1,5</b>	<b>WASHER D.6,6X18X1,5</b>
31	<b>2-00309</b>	<b>VTCEI M6X16</b>	<b>CIRCULAR SOCKET HEAD SCREW M6X16</b>
32	<b>310842</b>	<b>RONDELLA D.10,25X20X0,3</b>	<b>WASHER D.10,25X20X0,3</b>
33	<b>2-00023</b>	<b>ANELLO D.10</b>	<b>SEEGER D.10</b>
34	<b>2-02246</b>	<b>RONDELLA ELASTICA D.6,4X11</b>	<b>ELASTIC WASHER D.6,4X11</b>
35	<b>2-00738</b>	<b>VTCIC M5X7</b>	<b>HEAD SCREW CROSS CIRCULAR CONE M5X7</b>
36	454458	PROTEZIONE SCATOLA	COVER PROTECTION
37	<b>353559</b>	<b>BRACCIO RILEVATORE</b>	<b>DETECTOR ARM</b>
38	<b>2-02257</b>	<b>VATCCIC M.3X10</b>	<b>SCREW HEAD CUTTING CIRCULAR CROSS M.3X10</b>
39	453572	TASTATORE	DETECTOR
40	4-106072	CARTER SCATOLA RILEVATORE ESTERNO	EXTERNAL DETECTOR COVER
41	4-106012	CAVO 9X0,5 L.2000mm 9PM-9PM	CABLE 9X0,5 L.2000mm
42	<b>5-120837</b>	<b>POTENZ. CON CAVO</b>	<b>POTENT. WITH CABLE</b>
43	257670	RILEVATORE ESTERNO COMPLETO	EXTERNAL DETECTOR ASSEMBLY

## GRUPPO SUPPORTO MONITOR EM 7280

## EM 7280 MONITOR SUPPORT GROUP



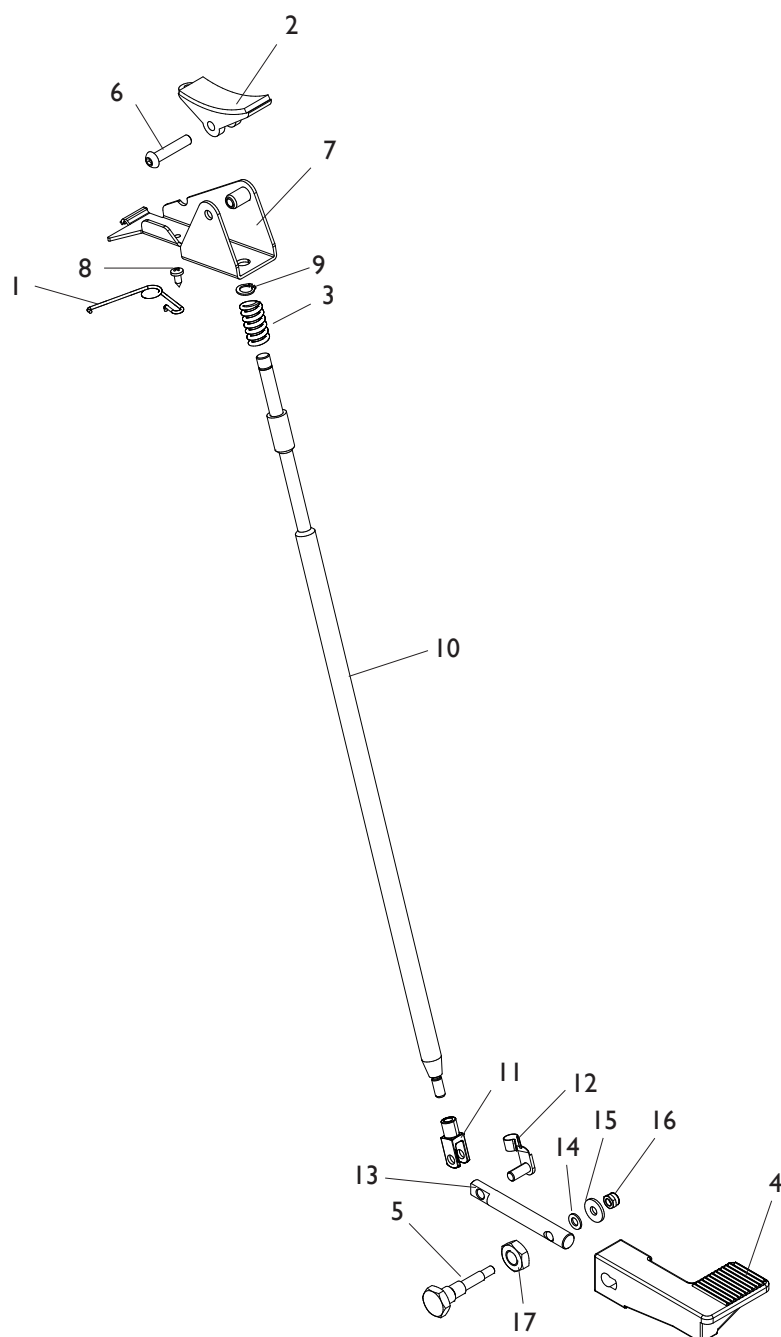
[TORNA AL COMPLESSIVO](#)  
[RETURNS TO OVERALL](#)



Rif. Ref.	Codice Code	Descrizione	Description
1	5-103240	SUPPORTO MONITOR COMPLETO	MONITOR SUPPORT ASSEMBLY
2	4-105362/90	LAMIERA SUPPORTO LCD	LCD PLATE
3	4-108779/90	SUPPORTO LCD	LCD SUPPORT
4	4-104381/90	FLANGIA ATTACCO LCD	LCD FLANGE
5	4-104380	PERNO D.15	PIN D.15
6	2-02794	<b>VTBEI M6X20</b>	<b>ROUNDED HEAD SCREW SOCKET M6X20</b>
7	2-80079	<b>ROSETTA D.6X24</b>	<b>WASHER D.6X24</b>
8	3-01756	<b>RONDELLA D.6,2X14X1</b>	<b>WASHER D.6,2X14X1</b>
9	2-00211	<b>RONDELLA D.6</b>	<b>WASHER D.6</b>
10	2-01257	<b>DADO ES.A. M6</b>	<b>AUTOLOCKING HEXAGON NUT M6</b>
11	2-00605	<b>VTCIC M4X10</b>	<b>SCREW TAPPING HEAD CUTTING CIRC. CROSS M.4X10</b>
12	2-91720	<b>VTCEI M10X12</b>	<b>CIRCULAR SOCKET HEAD SCREW M10X12</b>
13	414528	<b>ANELLO ELASTICO</b>	<b>ELASTIC WASHER</b>
14	2-00310	<b>VTCEI M6X20</b>	<b>CIRCULAR SOCKET HEAD SCREW M6X20</b>
15	2-00312	<b>VTCEI M6X25</b>	<b>CIRCULAR SOCKET HEAD SCREW M6X25</b>

# GRUPPO FRENO A PEDALE EM 7240

## EM 7240 PEDAL BRAKE GROUP

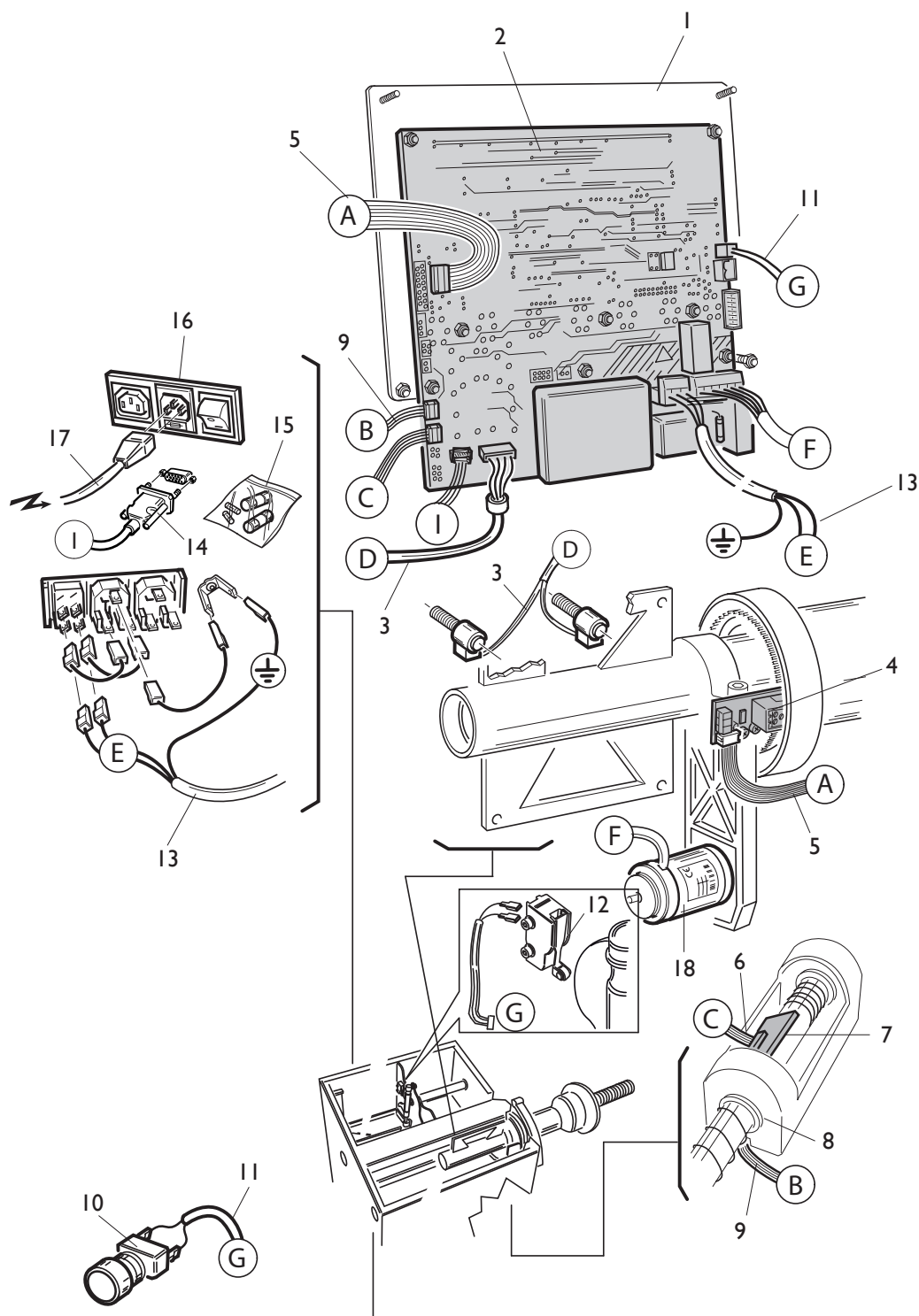


[TORNA AL COMPLESSIVO](#)  
[RETURNS TO OVERALL](#)

Rif. Ref.	Codice Code	Descrizione	Description
1	4-110623	MOLLA RECUPERO GIOCO	SPRING
2	4-102639	PATTINO FRENO	BRAKE PAD
3	4-103659	MOLLA D.13,4X2,6X25	SPRING D.13,4X2,6X25
4	4-103647	PEDALE A BILANCERE DX	RIGHT PEDAL
5	4-110038	FULCRO	FULCRUM
6	2-02210	<b>VTBEI M6X30</b>	<b>ROUNDED HEAD SCREW SOCKET M6X30</b>
7	4-103606	<b>LEVA SUPPORTO PATTINO</b>	<b>PAD SUPPORT</b>
8	2-91656	<b>VTABIC D.3,9X9,5</b>	<b>SCREW TAPPING HEAD CUTTING CIRC. CROSS D.3,9X9,5</b>
9	2-00021	<b>ANELLO D.8</b>	<b>SEEGER D.8</b>
10	4-103657	<b>ASTA FRENO D.12X490</b>	<b>BRAKE BAR D.12X490</b>
11	2-00042	<b>FORCELLA M6X12</b>	<b>FORK M6X12</b>
12	2-00044	<b>CLIP M6X12</b>	<b>CLIP M6X12</b>
13	4-103652	<b>LEVA PEDALE FRENO</b>	<b>LEVER</b>
14	2-00210	<b>RONDELLA D.5</b>	<b>WASHER D.5</b>
15	2-00713	<b>ROSETTA D.5,5X15X1,6</b>	<b>WASHER D.5,5X15X1,6</b>
16	2-71524	<b>DADO ES.A. M5</b>	<b>AUTOLOCKING HEXAGON NUT M5</b>
17	2-00157	<b>DADO ES. M10</b>	<b>HEXAGON NUT M10</b>

# CABLAGGI ELETTRICI EM 7240

## EM 7240 ELECTRICAL WIRING

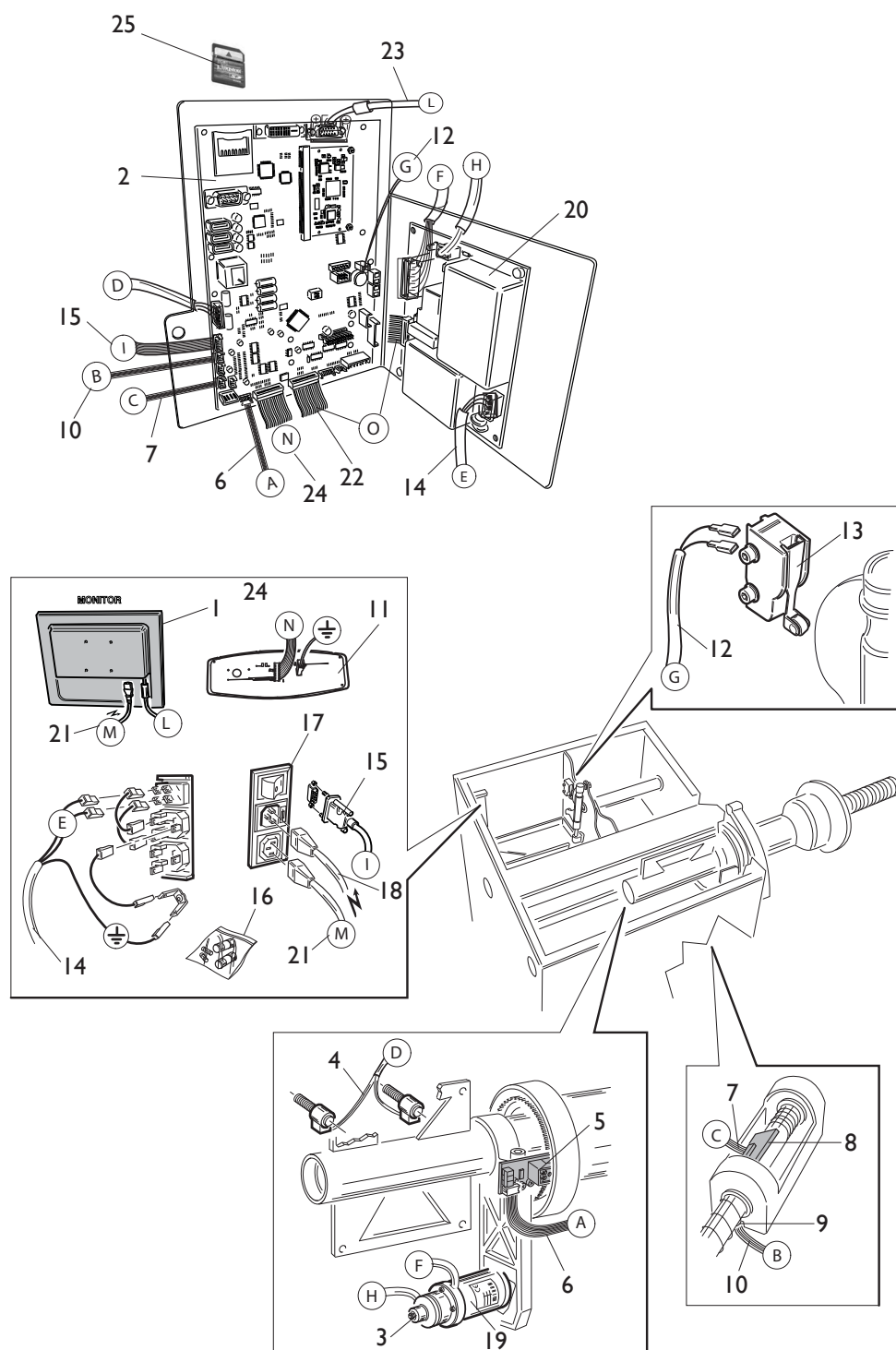


[TORNA AL COMPLESSIVO](#)  
[RETURNS TO OVERALL](#)

Rif. Ref.	Codice Code	Descrizione	Description
1	4-108085	PANNELLO DISPLAY	DISPLAY PANEL
2	5-103206	SCHEDA CPU	CPU P.C. BOARD
3	5-103533	PICK-UP	PICK-UP
4	5-101447	SK ENCODER	ENCODER P.C. BOARD
5	449319	FLAT 8 VIE L.1100mm	FLAT CABLE 8 WAY L.1100mm
6	4-109588	FLAT 6 VIE L.1100mm	FLAT CABLE 6 WAY L.1100mm
7	5-103205	SCHEDA MAGNETI	MAGNET P.C. BOARD
8	5-103204	SK ENCODER REFLEX	REFLEX ENCODER P.C. BOARD
9	4-109587	FLAT 4 VIE L. 900mm	FLAT CABLE 4 WAY L.900mm
10	256213	INTERRUTTORE DI START	START SWITCH
11	4-109501	CAVO 2X0,25 L. 1400mm	CABLE 2X0,25 L.1400mm
12	4-109005	MICRO 16A	MICRO 16A
13	4-108093	CAVO 3X1,5 L. 700mm	CABLE 3X1,5 L. 700mm
14	453698	FLAT 3P L.650mm	FLAT CABLE 3 WAY L.650mm
<b>15</b>	<b>5-120990</b>	<b>KIT FUSIBILI 3,15AT 230V</b>	<b>FUSE KIT 3,15AT 230V</b>
<b>15</b>	<b>5-120988</b>	<b>KIT FUSIBILI 5AT 115V</b>	<b>FUSE KIT 5AT 115V</b>
<b>16</b>	<b>3-02775</b>	<b>MODULO POLYSNAP+PRESA</b>	<b>POLYSNAP MODULE</b>
17	3-01943	CAVO RETE 230V	SUPPLY CABLE 230V
17	4-107853	CAVO RETE 115V	SUPPLY CABLE 115V
18	5-103200	MOTORE AC 230V ( <b>VERS. STD</b> )	MOTOR 230V ( <b>STD VERSION</b> )
18	5-103201	MOTORE AC 115V ( <b>VERS. STD</b> )	MOTOR 115V ( <b>STD VERSION</b> )

# CABLAGGI ELETTRICI EM 7280

## EM 7280 ELECTRICAL WIRING



[TORNA AL COMPLESSIVO](#)  
[RETURNS TO OVERALL](#)

Rif. Ref.	Codice Code	Descrizione	Description
1	4-103594	MONITOR LCD 17"	LCD MONITOR 17"
1	3-01952	MONITOR LCD 19"	LCD MONITOR 19"
2	5-105851	SCHEDA CPU	CPU P.C. BOARD
3	5-103692	FRENO CON MOZZO	BRAKE ASSEMBLY
4	5-103533	PICK-UP	PICK-UP
5	5-101447	SK ENCODER	ENCODER P.C. BOARD
6	449319	FLAT 8VIE L.1100mm	FLAT CABLE 8 WAY L.1100mm
7	4-109588	FLAT 6VIE L.1100mm	FLAT CABLE 6 WAY L.1100mm
8	5-103205	SCHEDA MAGNETI	MAGNET P.C. BOARD
9	5-103204	SK ENCODER REFLEX	REFLEX ENCODER P.C. BOARD
10	4-109587	FLAT 4VIE L. 900mm	FLAT CABLE 4 WAY L.900mm
11	5-100030	TASTIERA	KEYBOARD
12	4-109501	CAVO 2X0,25 L.1400mm	CABLE 2X0,25 L.1400mm
13	4-109005	MICRO 16A	MICRO 16A
14	4-108093	CAVO 3X1,5 L. 700mm	CABLE 3X1,5 L. 700mm
<b>15</b>	<b>453698</b>	<b>FLAT 3P L.650mm</b>	<b>FLAT CABLE 3 WAY L.650mm</b>
<b>16</b>	<b>5-120990</b>	<b>KIT FUSIBILI 3,15AT 230V</b>	<b>FUSE KIT 3,15AT 230V</b>
<b>16</b>	<b>5-120988</b>	<b>KIT FUSIBILI 5AT 115V</b>	<b>FUSE KIT 5AT 115V</b>
<b>17</b>	<b>3-02775</b>	<b>MODULO POLYSNAP+PRESA</b>	<b>POLYSNAP MODULE</b>
18	3-01943	CAVO RETE 230V	SUPPLY CABLE 230V
18	4-107853	CAVO RETE 115V	SUPPLY CABLE 115V
19	5-100172	MOTORE AC 230V ( <b>VERS. AUTOFR.</b> )	MOTOR 230V ( <b>BRAKE VERSION</b> )
19	5-100180	MOTORE AC 115V ( <b>VERS. AUTOFR.</b> )	MOTOR 115V ( <b>BRAKE VERSION</b> )
20	5-100117	SCHEDA ALIMENTATORE	SUPPLY P.C. BOARD
21	3-01942	CAVO ALIMENTAZIONE MONITOR	MONITOR SUPPLY CALBE
22	4-109502	FLAT 18VIE L. 250mm	FLAT CABLE 18 WAY L.250mm
23	4-106133	CAVO SCHERMATO 15x0,34 L.1800mm	CABLE 15X0,34 L.1800mm
24	4-104684	FLAT 16VIE L.1400mm	FLAT CABLE 16 WAY L.1400mm
<b>25</b>	<b>5-120649</b>	<b>SD EM7280</b>	<b>SD EM7280</b>



Via per Carpi, n°9 - 42015 Correggio (RE) ITALY  
Tel. ++39 0522 639111 - Fax ++39 0522 639150  
[www.corgchi.com](http://www.corgchi.com) - [info@corgchi.com](mailto:info@corgchi.com)

Code 4-I08645E

Production date : 09 / 2014

Il disegno è realizzato con tutti i particolari ma solo quelli codificati sono forniti come ricambi. L'Azienda si riserva la facoltà di apportare modifiche senza preavviso.

The drawing shows all parts but only the coded parts are supplied as spares. The Company reserves the right to make modifications without prior notice.