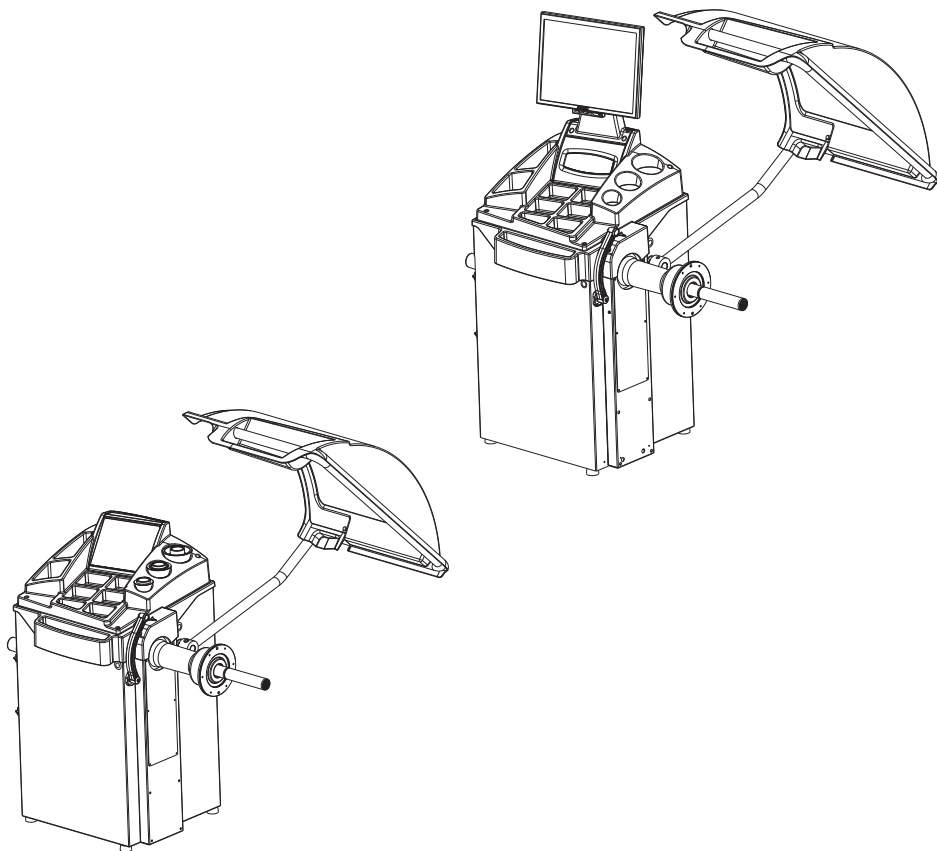


Questo libretto non autorizza l'utente ad intervenire sulle macchine ad esclusione di quanto esplicitamente descritto nel Manuale d'uso, ma consente all'utente di fornire informazioni precise all'Assistenza tecnica, al fine di ridurre i tempi di intervento.

EM 7240 EM 7280

The "Spare parts" booklet does not authorize the user to carry out work on the machine unless expressly specified in the instruction manual, but does enable him to provide accurate information to the assistance service in order to reduce downtime.

PEZZI DI RICAMBIO SPARE PARTS LIST ERSATZTEILLISTE PIECES DE RECHANGE



Code

Production

4-I08645B

10 / 10

Der Katalog Ersatzteile stellt keine Genehmigung zu eigenmächtigen Eingriffen dar (mit Ausnahme jener im Handbuch beschriebenen), sondern er soll den Anwender in die Lage versetzen, dem technischen Service präzise Informationen zu liefern, um die Reparaturzeiten zu verkürzen.



Le livret "Pièces de rechange", n'autorise pas l'utilisateur à intervenir sur les machines, sauf pour tout ce qui est clairement décrit dans le manuel d'utilisation, mais lui permet de fournir des informations précises à l'assistance technique, afin de diminuer les délais d'intervention.

I

Sul presente documento sono stati indicati in grassetto i codici che sono variati rispetto a quelli riportati nella precedente versione del 01/10

En

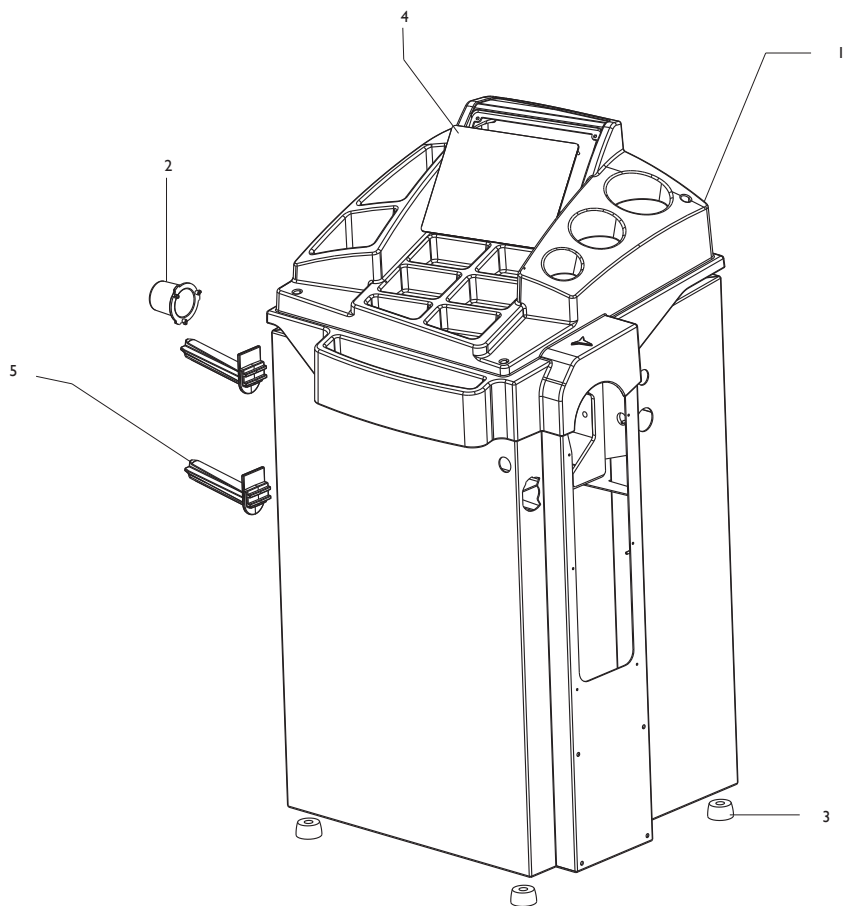
Codes that have changed from those given in the previous version dated 01/10 are indicated in bold type in this document

De

Die gegenüber der Vorgängerversion vom 01/10 geänderten Codes sind im vorliegenden Dokument fettgedruckt angegeben

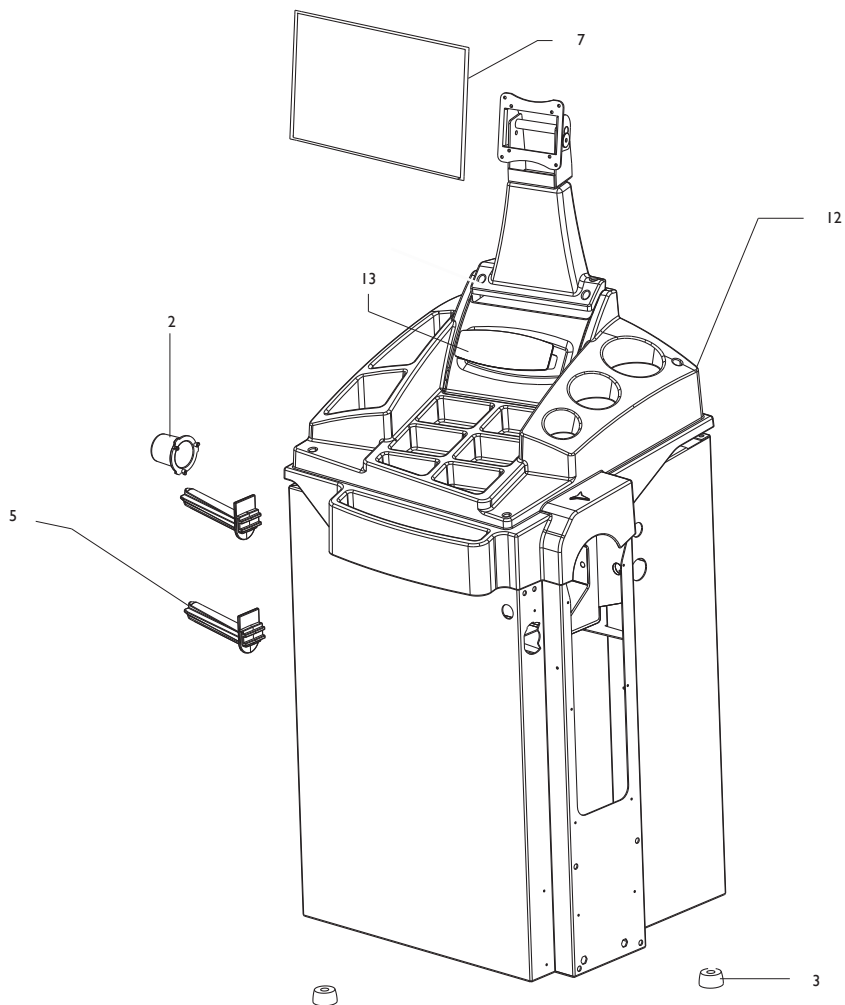
Fr

Ce document reporte en gras les codes qui ont été modifiés par rapport à ceux reportés dans la version précédente du mois de 01/10



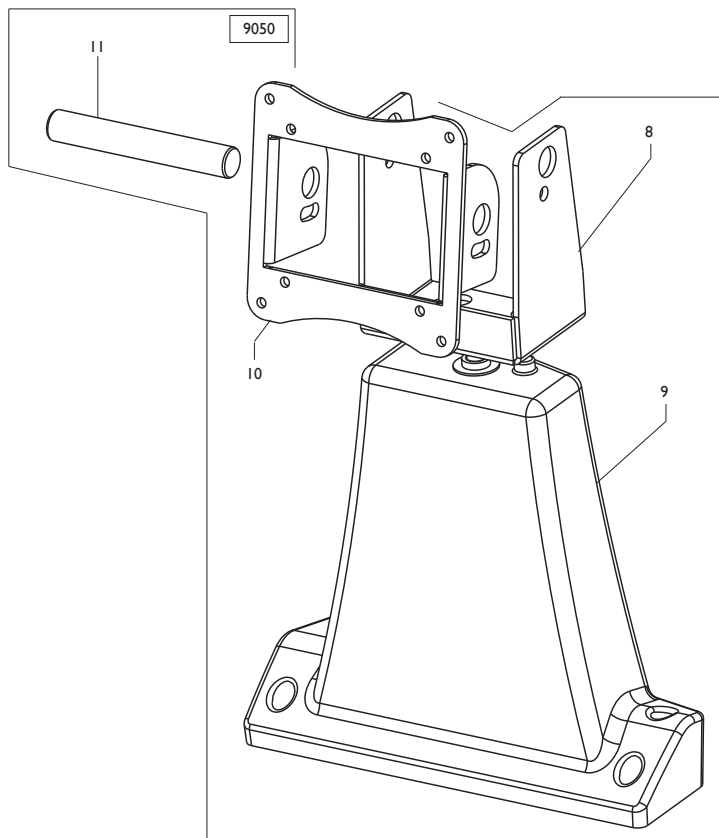
0001	4-108650/90	COPERCHIO
0002	4-108675	TAPPO
0003	460029	PIEDE
0004	4-108085	TASTIERA EM7240
0005	438319	SUPPORTO

LID
PLUG
FOOT
KEYBOARD
SUPPORT

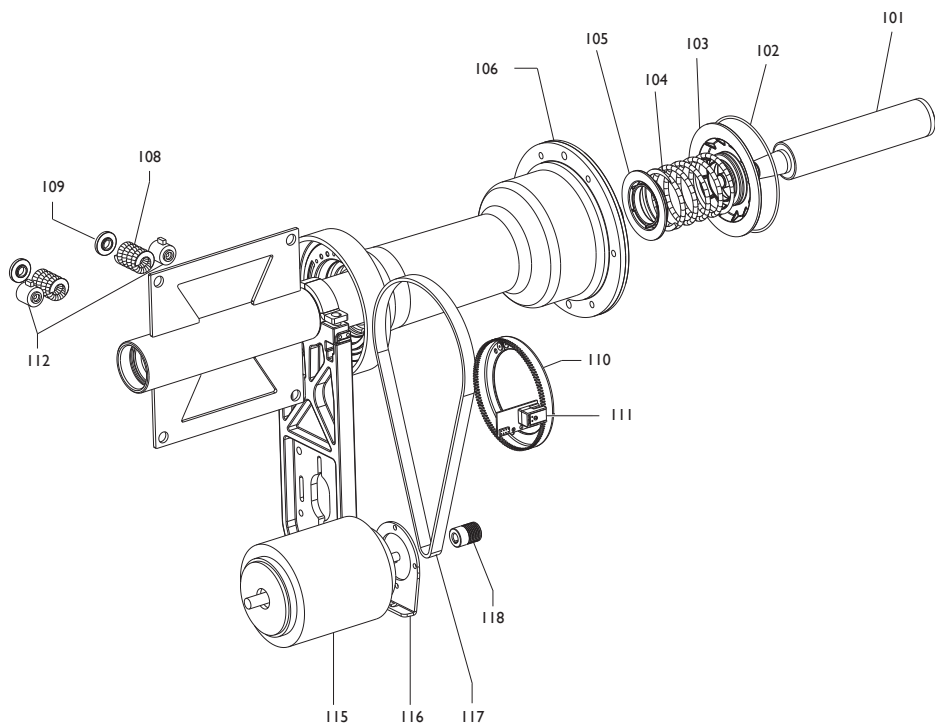


0002	4-108675	TAPPO
0003	460029	PIEDE
0005	438319	SUPPORTO
0007	4-103594	MONITOR 17"
0007	3-01952	MONITOR 19"
0012	4-108778/90	COPERCHIO
0013	5-100030	TASTIERA EM7280

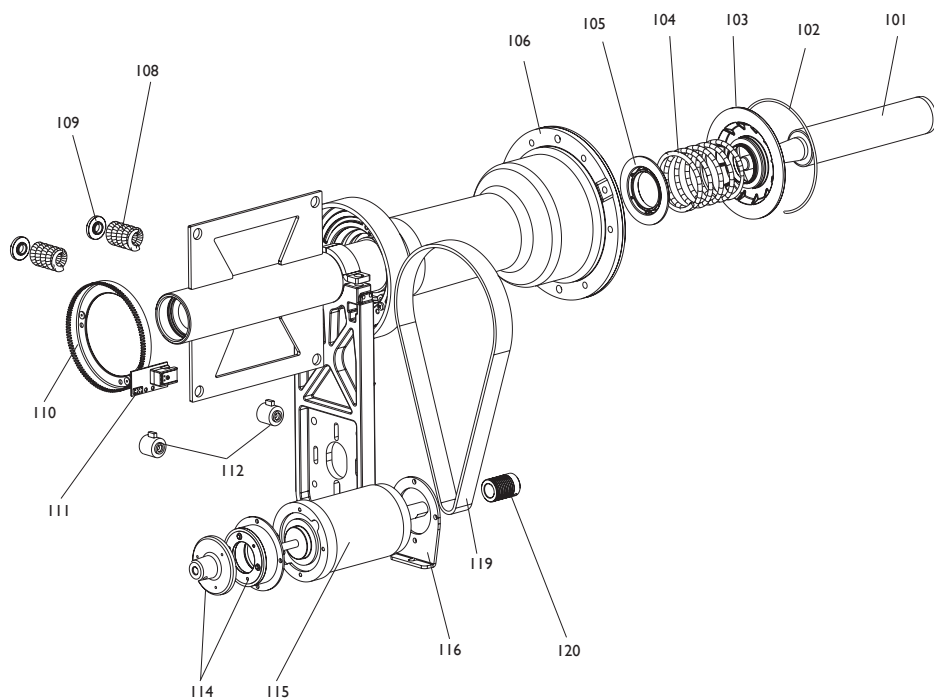
PLUG
FOOT
SUPPORT
MONITOR 17"
MONIITOR 19"
LID
KEYBOARD



9050	5-103240	SUPPORTO MONITOR COMPLETO	SUPPORT
0008	4-105362/90	STAFFA	BRACKET
0009	4-108779/90	SUPPORTO	SUPPORT
0010	4-104381/90	FLANGIA	FLANGE
0011	4-104380	PERNO	PIN

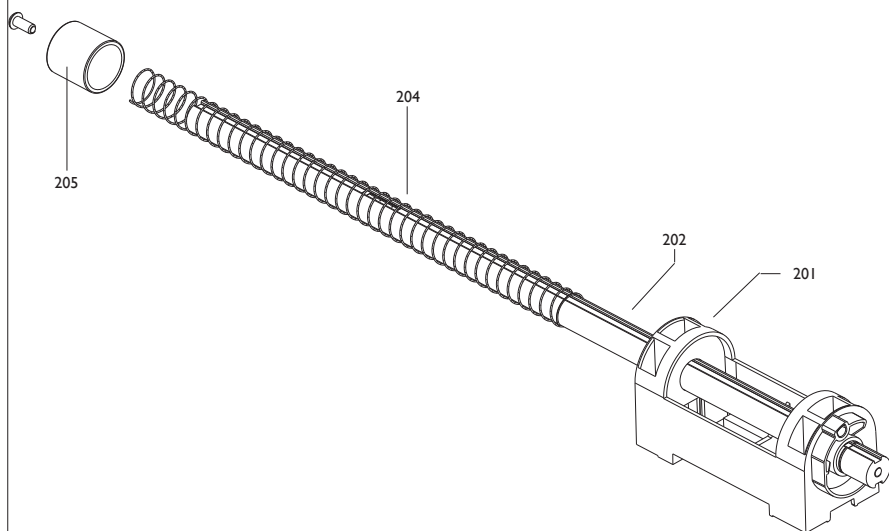


0101	5-101514	MOZZO	HUB
0102	4-101740	ANELLO	RING
0103	4-104590	DISCO	DISK
0104	4-104588	MOLLA	SPRING
0105	4-104589	DISCO	DISK
0106	5-103258	GRUPPO	ASSEMBLY
0108	4-104652	MOLLA	SPRING
0109	4-104650	BOCCOLA	BUSHING
0110	5-102161	KIT DISCO	DISK
0111	5-101447	SCHEDA ENCODER	ENCODER
0			
0115	5-103200	MOTORE AC 230V+PULEGGIA	MOTOR+PULLEY
0115	5-103201	MOTORE AC 115V+PULEGGIA	MOTOR+PULLEY
0116	4-104598	FLANGIA	FLANGE
0117	3-03052	CINGHIA	BELT
0118	4-108609	PULEGGIA	PULLEY



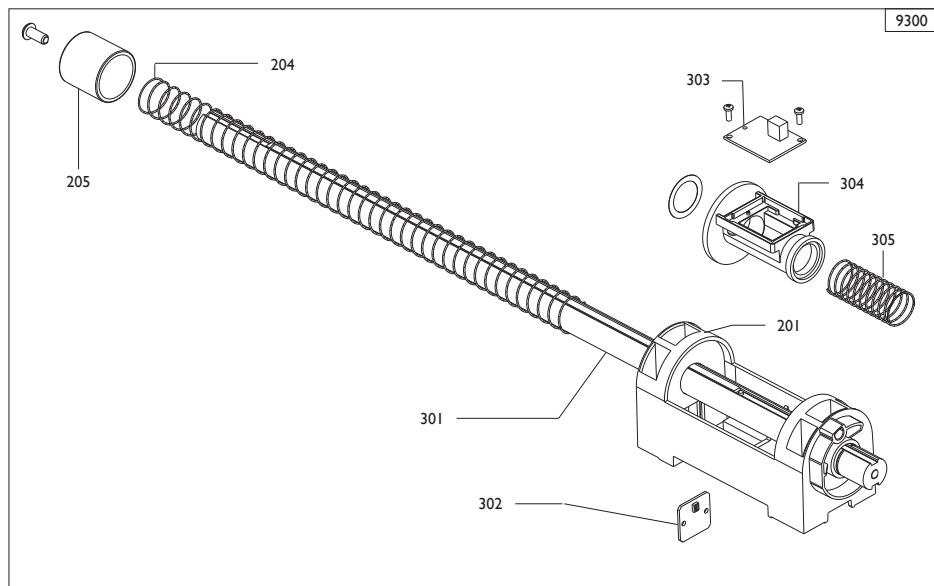
0101	5-101514	MOZZO	HUB	NABE	MOYEU
0102	4-101740	ANELLO	RING	RING	ANNEAU
0103	4-104590	DISCO	DISK	SCHEIBE	DISQUE
0104	4-104588	MOLLA	SPRING	FEDER	RESSORT
0105	4-104589	DISCO	DISK	SCHEIBE	DISQUE
0106	5-103258	GRUPPO	ASSEMBLY	GRUPPE	GROUPE
0108	4-104652	MOLLA	SPRING	FEDER	RESSORT
0109	4-104650	BOCCOLA	BUSHING	LAGER	DOUILLE
0110	5-102161	KIT DISCO	DISK	SCHEIBE	DISQUE
0111	5-101447	SCHEDA ENCODER	ENCODER	CODIERER	ENCODER
0112	5-103533	PICK-UP	PICK-UP	PICK-UP	PICK-UP
0114	5-103692	FRENO+MOZZO+CONN		BRAKE	
0115	5-100172	MOTORE AC 230V+PULEGGIA			MOTOR
0115	5-100180	MOTORE AC 115V+PULEGGIA			MOTOR
0116	4-104598	FLANGIA	FLANGE	FLANSCH	FLASQUE
0119	3-03052	CINGHIA	BELT	RIEMEN	COURROIE
0120	4-108609	PULEGGIA	PULLEY	RIEMENSCHIEBE	POULIE

9200

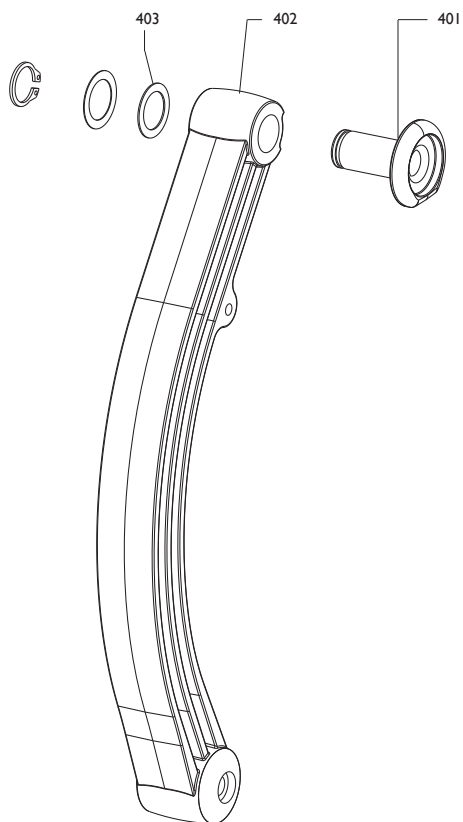


9200	5-103046	TASTATORE MANUALE
0201	4-108592	SUPPORTO
0202	5-103202	ASTA+TARGHETTA
0204	4-108611	MOLLA
0205	4-108594	BOCCOLA

MANUAL FEELER
SUPPORT
ROD+LABEL
SPRING
BUSHING

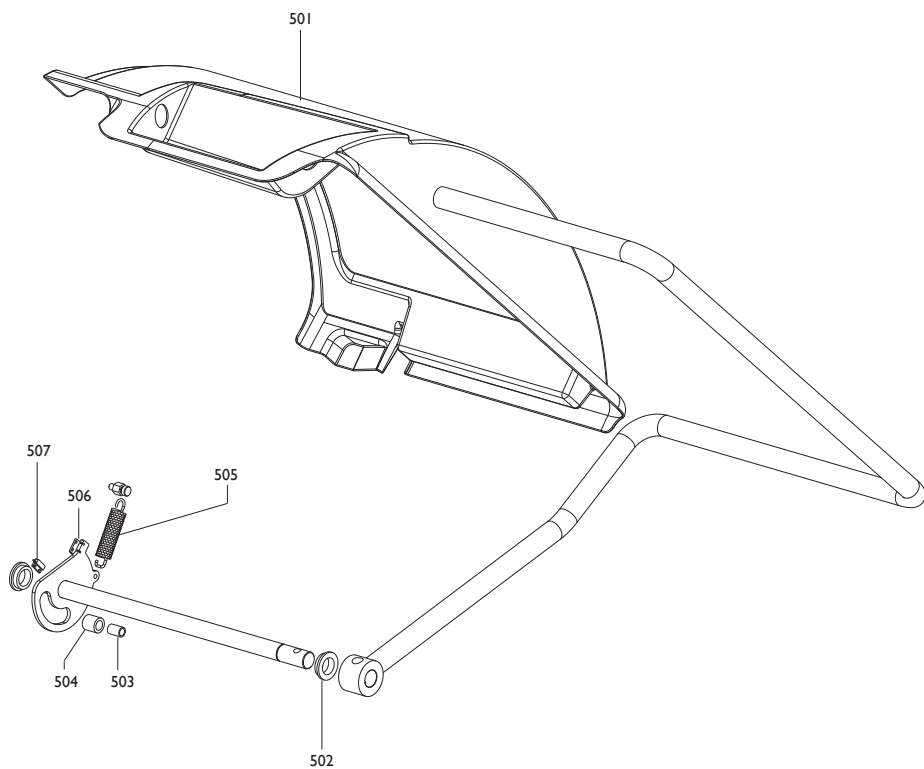


9300	5-103047	TASTATORE DIGITALE	DIGITAL FEELER
0201	4-108592	SUPPORTO	SUPPORT
0204	4-108611	MOLLA	SPRING
0205	4-108594	BOCCOLA	BUSHING
0301	5-103203	ASTA+MAGNETI+TARGHETTA	STAFF+MAGNET+LABEL
0302	5-103204	SCHEDA ENCODER	ENCODER BOARD
0303	5-103205	SCHEDA MAGNETI	BOARD
0304	4-108799	SUPPORTO+ENCODER	SUPPORT+ENCODER
0305	4-108612	MOLLA	SPRING

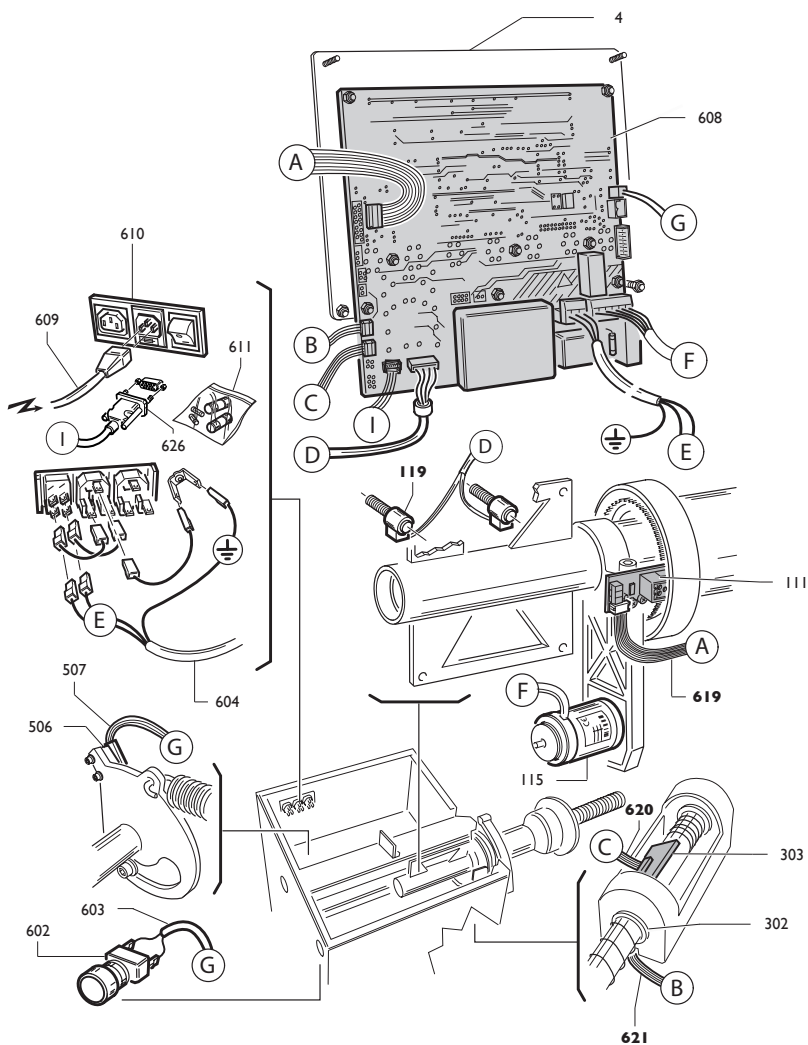



0401	4-108607	MANINA NO CLIP
0402	4-108606	LEVA RILEVATORE
0403	450073	ANELLO

TERMINAL NO CLIP
LEVER
RING

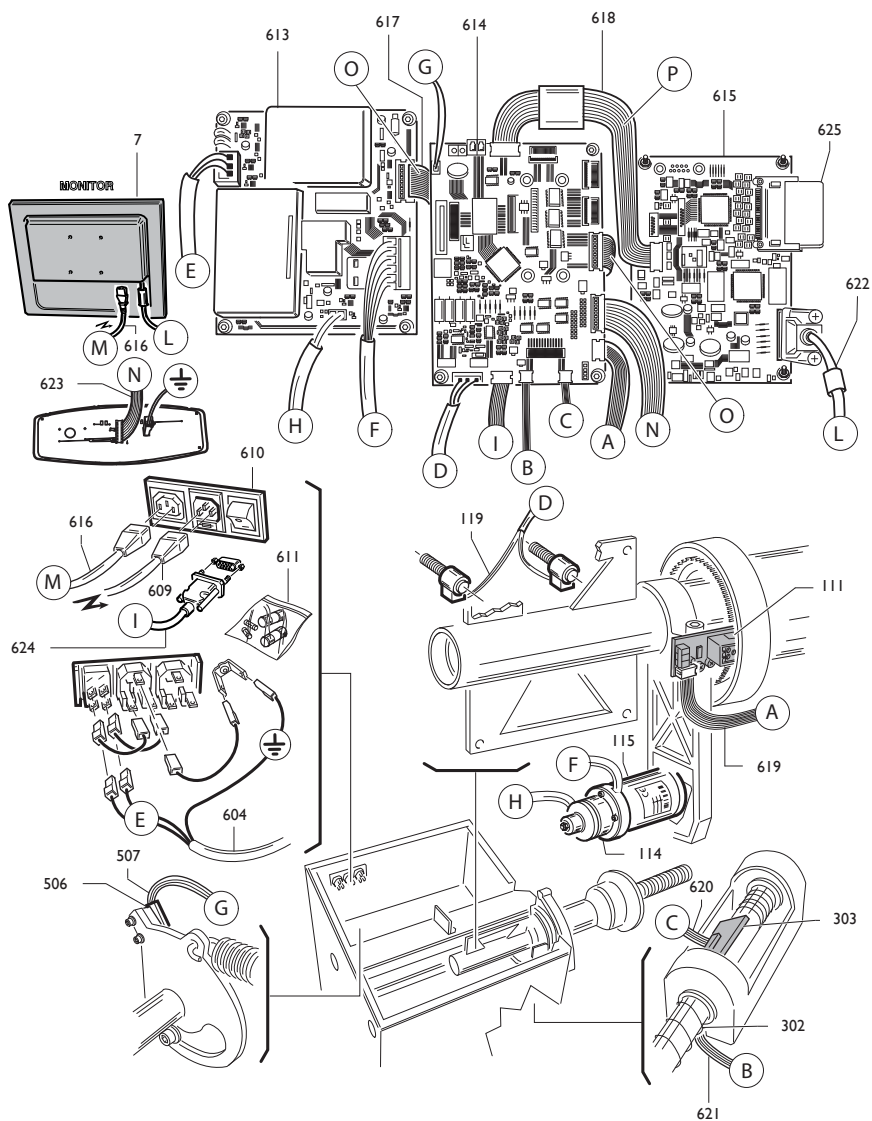



0501	4-105459/90	PROTEZIONE	PROTECTION
0502	433637	BOCCOLA	BUSHING
0503	4-108658	DISTANZIALE	SPACE
0504	4-108657	FINECORSA	END OF STROKE
0505	4-108659	MOLLA	SPRING
0506	4-108096	MAGNETE	MAGNET
0507	4-108095	MICROINTERRUTTORE	MICROSWITCH



	EM7240	Impianto elettrico	TAV. G - 10 / 10
--	--------	--------------------	------------------

0004	4-108085	TASTIERA	KEYBOARD
0115	5-103200	MOTORE+PULEGGIA 230V	MOTOR+PULLEY
0115	5-103201	MOTORE+PULEGGIA 115V	MOTOR+PULLEY
0119	5-103533	PICK UP+CAVO	PICK UP+CABLE
0111	5-101447	SCHEDA ENCODER	ENCODER
0302	5-103204	SCHEDA ENCODER TASTATORE	ENCODER BOARD
0303	5-103205	SCHEDA MAGNETI	MAGNET BOARD
0506	4-108096	MAGNETE M4	MAGNET
0507	4-108095	INTERRUTTORE REED+CAVO	SWITCH
0602	256213	INTERRUTTORE DI START	SWITCH
0603	4-107108	CAVO 2POLI L.1000	CABLE
0604	4-108093	CAVO ALIM.3P	CABLE
0608	5-103206	SCHEDA EL.+SW	P.C.BOARD+SW
0609	3-01943	CAVO RETE 2.5MT	CABLE
0610	3-01941	INTERRUTTORE	SWITCH
0611	5-102043	KIT 3 FUSIBILI 8AT	FUSE KIT 8AT
0619	4-109586	CAVO FLAT 8VIE L.950	FLAT
0620	4-109588	CAVO FLAT 6 VIE L.1100	FLAT
0621	4-109587	CAVO FLAT 4 VIE L.900	FLAT
0626	453698	CAVO FLAT	FLAT



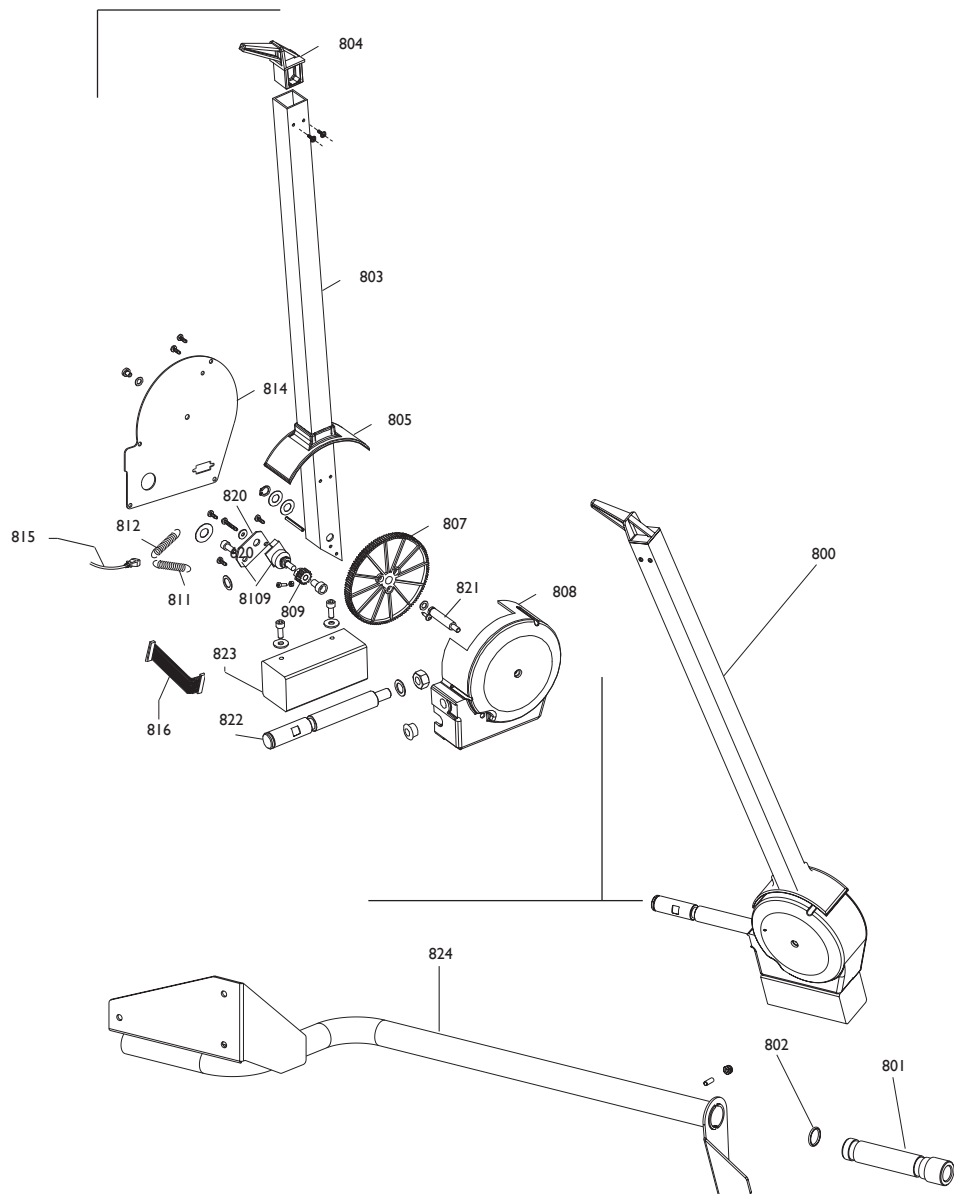
	EM7280	Impianto elettrico	TAV. GI - 01 / 10
--	--------	--------------------	-------------------

0007	4-103594	MONITOR 17"	MONITOR 17"
0007	3-01952	MONITOR 19"	MONITOR 19"
0111	5-101447	SCHEDA ENCODER	ENCODER
0114	4-109523	FRENO+MOZZO	BRAKE
0115	5-100172	MOTORE+PULEGIA 230V	MOTOR+PULLEY
0115	5-100180	MOTORE+PULEGIA 115V	MOTOR+PULLEY
0119	5-103533	PICK UP+CAVO	PICK UP+CABLE
0302	5-103204	SCHEDA ENCODER TASTATORE	ENCODER BOARD
0303	5-103205	SCHEDA MAGNETI	MAGNET BOARD
0506	4-108096	MAGNETE M4	MAGNET
0507	4-108095	INTERRUTTORE REED+CAVO	SWITCH
0604	4-108093	CAVO ALIM.3P	CABLE
0609	3-01943	CAVO RETE 2.5MT	CABLE
0610	3-01941	INTERRUTTORE	SWITCH
0611	5-102043	KIT 3 FUSIBILI 8AT	FUSE KIT 8AT
0613	5-100117	SCHEDA ALIMENTATORE	P.C.BOARD
0614	5-100126	SCHEDA CPU	P.C.BOARD
0615	5-100146	SCHEDA GRAFICA	P.C.BOARD
0616	3-01942	CAVO MONITOR	CABLE
0617	4-109502	FLAT 18VIE	FLAT
0618	4-109500	FLAT 12 VIE	FLAT
0619	4-109586	CAVO FLAT 8VIE L.950	FLAT
0620	4-109588	CAVO FLAT 6 VIE L.1100	FLAT
0621	4-109587	CAVO FLAT 4 VIE L.900	FLAT
0622	4-106133	CAVO PROLUNGA	CABLE
0623	4-104684	FLAT 16VIE	FLAT
0624	455181	FLAT 3POLI	FLAT
0625	3-02032	COMPACT FLASH(NO SW)	COMPACT FLASH (NO SW)



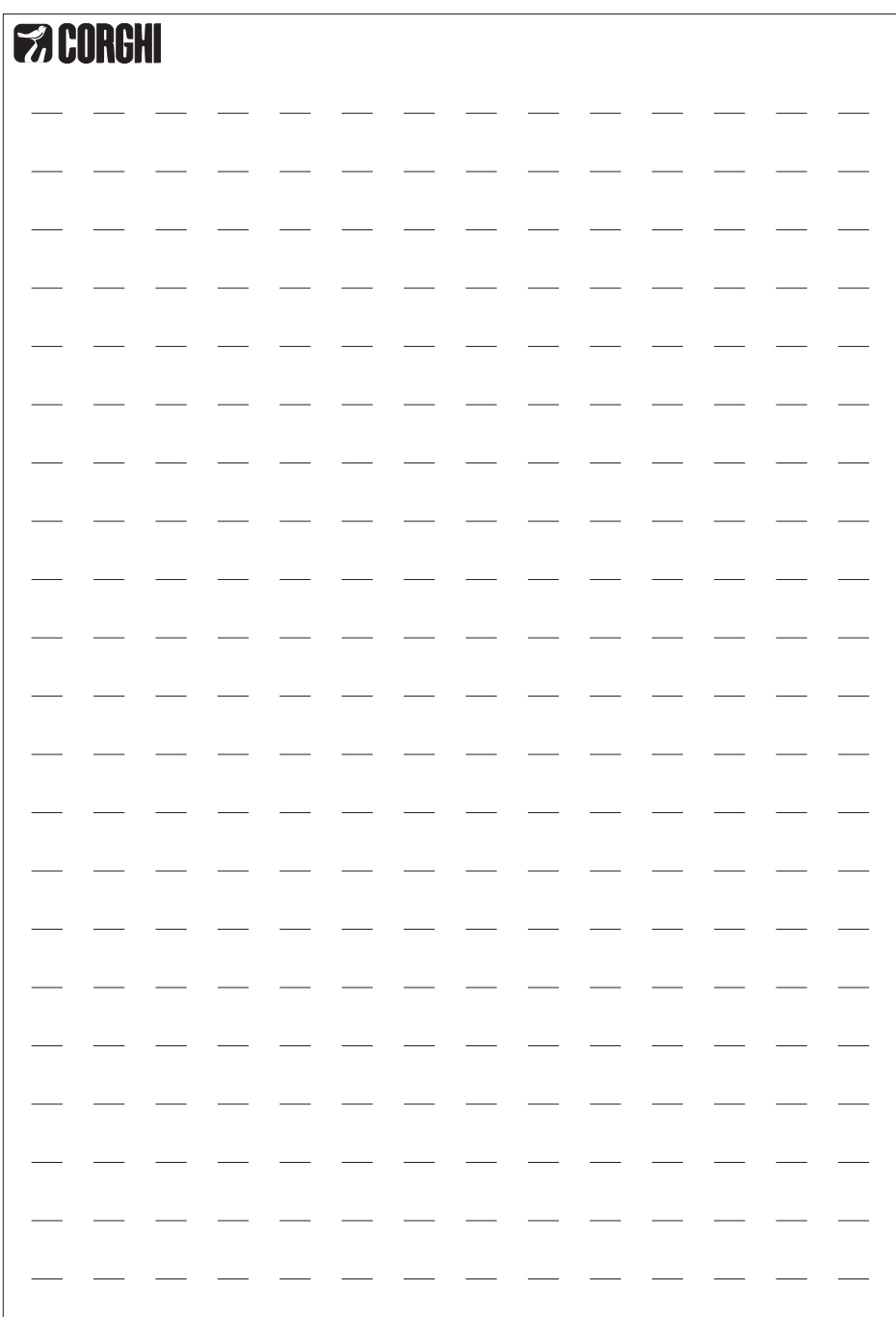
	EM7240	Freno	TAV. H- 10 / 10
--	--------	-------	-----------------

0701	4-110623	MOLLA	SPRING
0702	4-102639	PATTINO	PAD
0703	4-103659	MOLLA	SPRING
0704	4-103647	PEDALE	PEDAL
0705	4-110038	FULCRO PEDALE	PEDAL PIN



0800	257670	RILEVATORE	SIGNAL TRACER
0801	4-104994	BOCCOLA	BUSHING
0802	421590	GUARNIZIONE	GASKET
0803	353559	BRACCIO	ARM
0804	453572	TASTATORE	FEELER
0805	454458	PROTEZIONE	SHIELD
0807	453579	INGRANGGIO	GEAR
0808	454457	CORPO	BODY
0809	449326	PIGNONE	PINION
0810	5-101455	POTENZIOMETRO	POTENTIOMETER
0811	455120	MOLLA	SPRING
0812	454239	MOLLA	SPRING
0814	4-106072	COPERCHIO	LID
0815	4-106012	CONNETTORE	CONNECTOR
0816	4-106036	CAVO	CABLE
0820	353573	LAMIERA POTENZIOMETRO	PROTECTION
0821	353574	PERNO	PIN
0822	353575	PERNO	PIN
0823	353577	CONTRAPPESO	POIND
0824	4-104813	SUPPORTO TASTATORE	SUPPORT

[illegible]



Il disegno è realizzato con tutti i particolari ma solo quelli codificati sono forniti come ricambi. L'Azienda si riserva la facoltà di apportare modifiche senza preavviso.



Via per Carpi, n°9 - 42015 Correggio (RE) ITALY
Tel. ++39 0522 639111 - Fax ++39 0522 639150
www.corgi.com - info@corgi.com

The drawing shows all parts but only the coded parts are supplied as spares. The Company reserves the right to make modifications without prior notice.

COMM - Cod. 4-10645B - 01/10.