

Questo libretto non autorizza l'utente ad intervenire sulle macchine ad esclusione di quanto esplicitamente descritto nel Manuale d'uso, ma consente all'utente di fornire informazioni precise all'Assistenza tecnica, al fine di ridurre i tempi di intervento.

# A 9824TI LL

The "Spare parts" booklet does not authorize the user to carry out work on the machine unless expressly specified in the instruction manual, but does enable him to provide accurate information to the assistance service in order to reduce downtime.

## PEZZI DI RICAMBIO SPARE PARTS LIST ERSATZTEILLISTE PIECES DE RECHANGE

Code

4-116871

Production from

01 / 2013

Der Katalog Ersatzteile stellt keine Genehmigung zu eigenmächtigen Eingriffen dar (mit Ausnahme jener im Handbuch beschrieben), sondern er soll den Anwender in die Lage versetzen, dem technischen Service präzise Informationen zu liefern, um die Reparaturzeiten zu verkürzen.



Le livret "Pièces de rechange", n'autorise pas l'utilisateur à intervenir sur les machines, sauf pour tout ce qui est clairement décrit dans le manuel d'utilisation, mais lui permet de fournir des informations précises à l'assistance technique, afin de diminuer les délais d'intervention.



I

Sul presente documento sono stati indicati in grassetto i codici che sono variati rispetto a quelli riportati nella precedente versione del 01/13

En

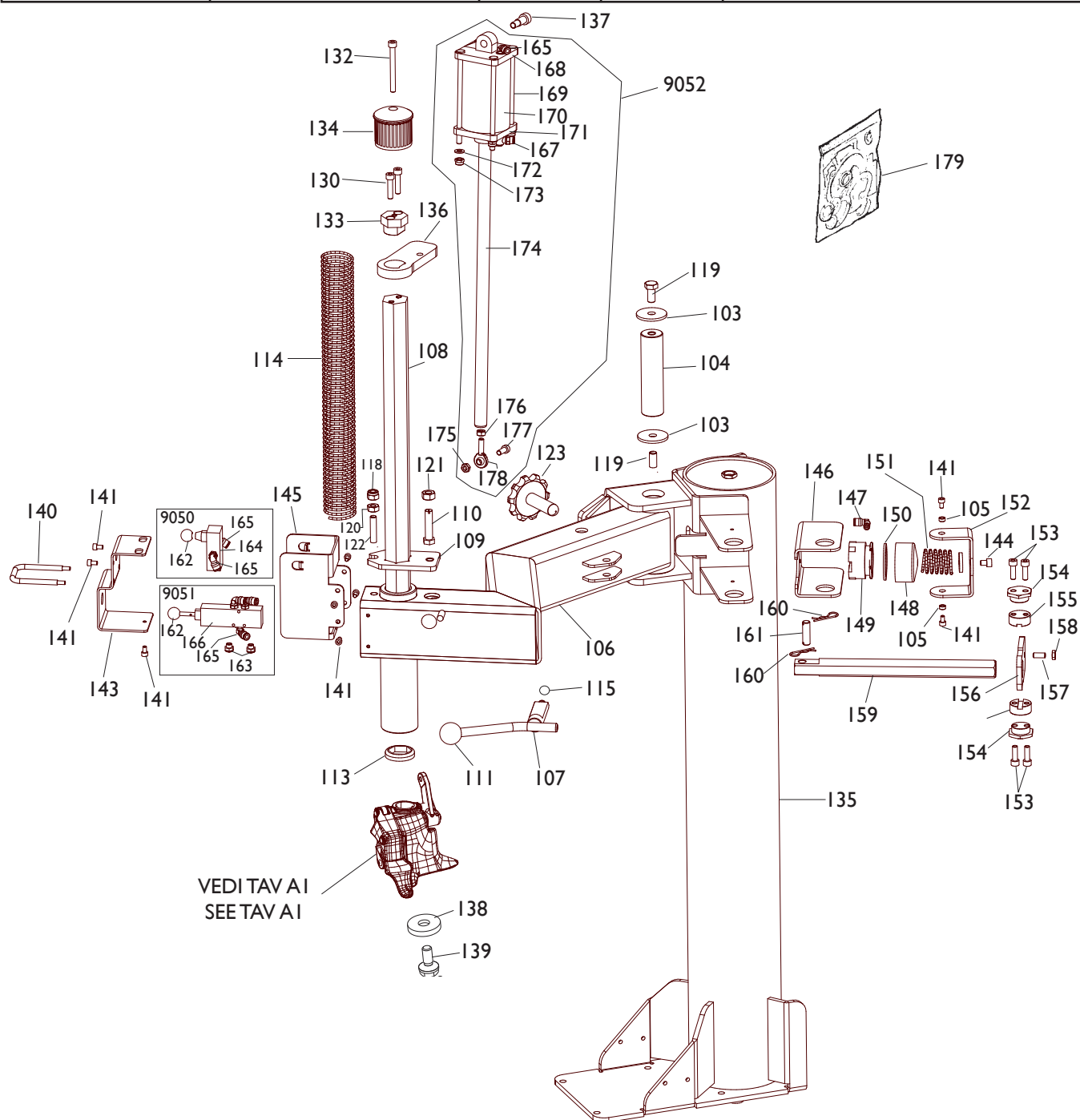
Codes that have changed from those given in the previous version dated 01/13 are indicated in bold type in this document

De

Die gegenüber der Vorgängerversion vom 01/13 geänderten Codes sind im vorliegenden Dokument fettgedruckt angegeben

Fr

Ce document reporte en gras les codes qui ont été modifiés par rapport à ceux reportés dans la version précédente du mois de 01/13

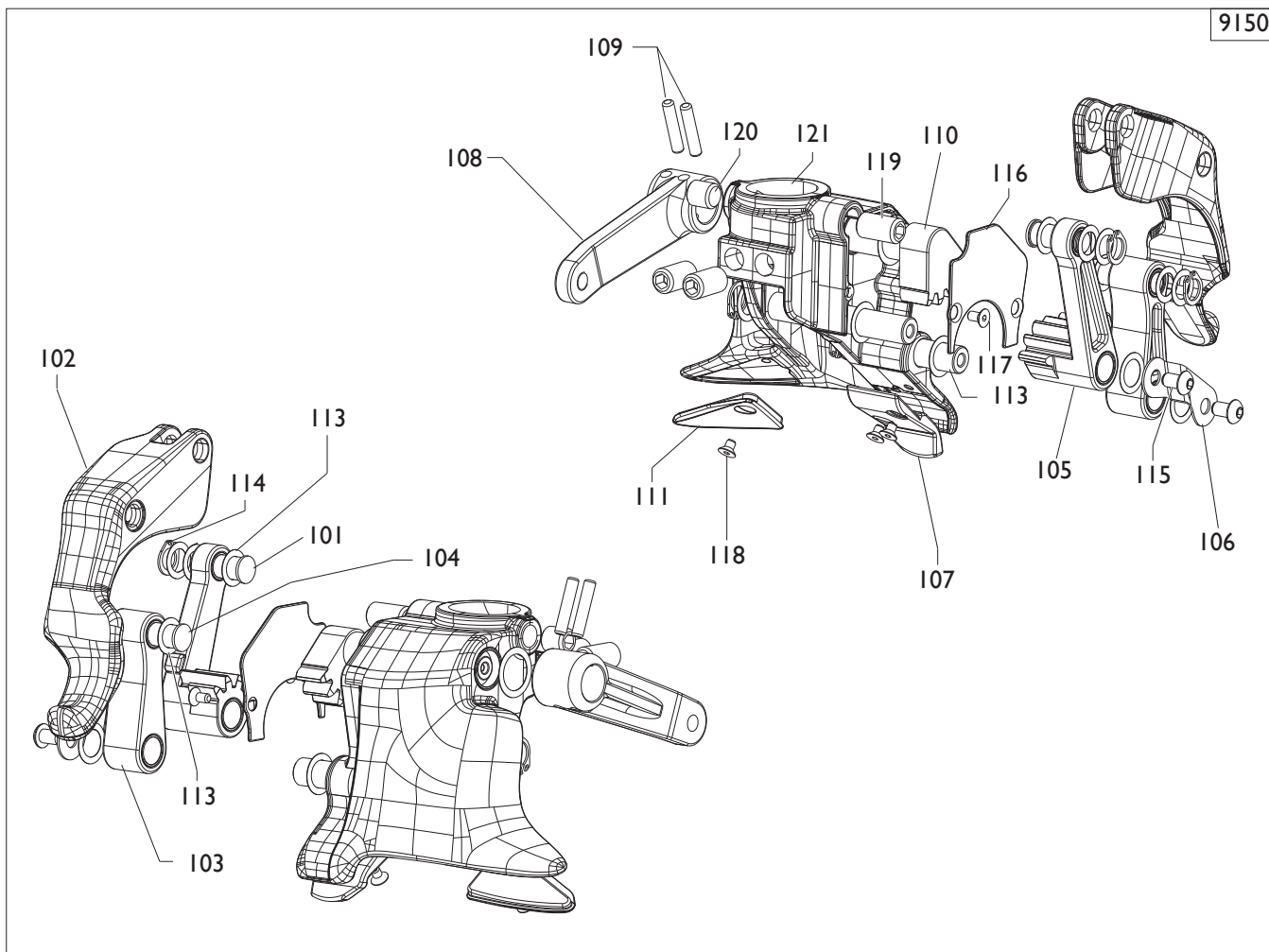


0103	318216	RONDELLA
0104	323881	PERNO
0105	4-116844	BOCCOLA
0106	4-116822	BRACCIO ORIZZ.
0107	223877	ECCENTRICO CON LEVA
0108	4-116815	BRACCIO VERTICALE
0109	341001	BLOCCAGGIO
0110	341249	VITE
0111	423889	POMOLO
0113	428681	ANELLO
0114	4-116857	MOLLA D.44.,5X715X3,5
0115	2-00025	SEGER D12
0118	2-01019	DADO M10
0119	2-01225	VITE D12X25

WASHER
PIN
BUSH
HORIZONTAL ARM
ECCENTRIC
VERTICAL ARM
LOCKING
SCREW
KNOB
RING
SPRING
SEGER
NUT
SCREW

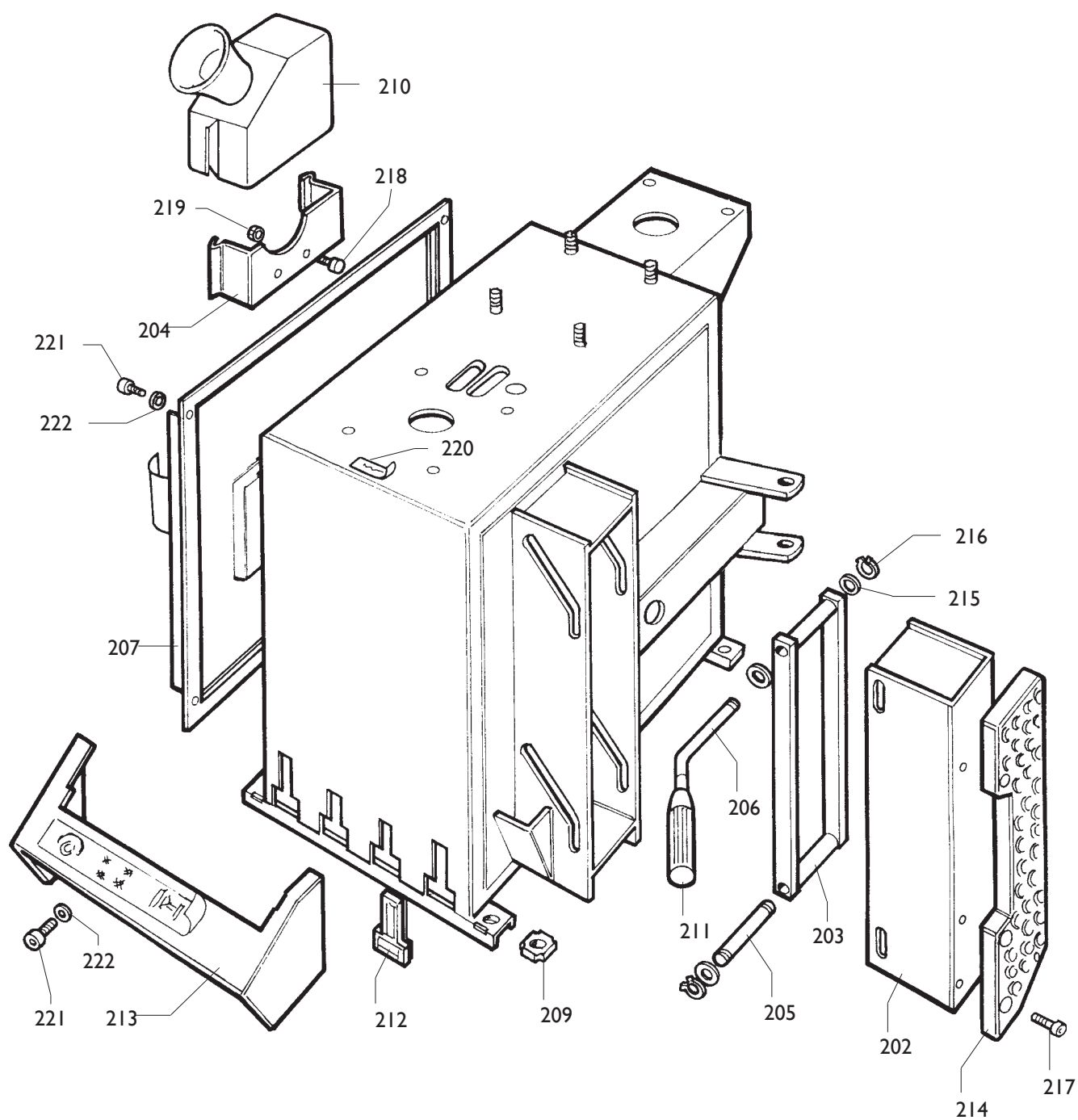
		A 9824 TI LL	Fig. A	01 / 13	Braccio operante
0120	2-00152	DADO M10			NUT
0121	2-00153	DADO M12			NUT
0122	2-00382	VITE M10X45			SCREW
0123	441580	MANOPOLA			KNOB
0130	2-00323	VITE M8X35			SCREW
0132	2-01312	VITE 1/2F M8X80			SCREW
0133	4-116818	TAPPO BR.VERTICAL			VERTICAL ARM CAP
0134	423907	POMOLO			KNOB
0135	5-105540	PALO			SHAFT
0136	4-116828	ATTACCO CILINDRO			CYLINDER SUPPORT
0137	4-103906	VITE D12X20 M10			SCREW
0138	4-107211	RONDELLA TORRETTA			WASHER
0139	350197	VITE FISS.TORRETTA			SCREW
0140	4-116830	CAVALLOTTO			U-FORK
0141	2-00308	VITE M6X10			SCREW
0143	4-116832	COPERCHIO ANTERIORE			FRONT COVER
0144	2-01053	VITE M8X10			SCREW
0145	4-116834	SUPPORTO VALVOLA			VALVE SUPPORT
0146	4-116852	SUPPORTO CILINDRO			CYLINDER SUPPORT
0147	3-00220	RACCORDO			FITTING
0148	326537	CILINDRO D.60			CYLINDER
0149	443077	PISTONE			PISTON
0150	443078	GUARN. D.60X47,6X6,35			O-RING
0151	4-116858	MOLLA D.40X49X3,5			SPRING
0152	4-116845	PIASTRA CONTRASTO MOLLA			SPRING PLATE
0153	2-00321	VITE M8X25			SCREW
0154	4-116848	SNODO ORIENTABILE			ARTICULATING PIVOT
0155	4-116851	CENTRO SNODO			CENTER PIVOT
0156	4-116849	STRANGOLO			STRANGLE
0157	2-00994	VITE M8X20			SCREW
0158	2-00156	DADO M8			NUT
0159	4-116853	ASTA COMANDO BLOCCAGGIO			CONTROL ROD LOCKING
0160	435055	MOLLA A SPILLO D.2X10			SPRING
0161	4-116856	PERNO			PIN
9050	5-105689	VALVOLA			VALVE
0162	3-00711	POMOLO D.20 M5			KNOB
0163	3-00181	SILENZIATORE 1/8			SILENCER
0164	3-02920	VALVOLA			VALVE
0165	3-00053	RACCORDO			FITTING
9051	5-105543	VALVOLA COMANDO UNGHIA			CONTROL VALVE NAIL
0162	3-00711	POMOLO D.20 M5			KNOB
0163	3-00181	SILENZIATORE 1/8			SILENCER
0165	3-00053	RACCORDO			FITTING
0166	3-03051	VALVOLA			VALVE
9052	5-105541	CILINDRO COMANDO UTENSILE			CILINDER CONTROL TOOL
0165	3-00053	RACCORDO			FITTING
0167	3-02044	RACCORDO			FITTING
0168	361975	FLANGIA POSTERIORE			REAR FLANGE
0169	4-106257	TIRANTE M8X155			TIE-ROD
0170	4-106258	CAMICIA D.75X121			LINER
0171	361519	FLANGIA ANTERIORE			FRONT FLANGE
0172	2-00212	RONDELLA D.8			WASHER
0173	2-01137	DADO M8			NUT
0174	4-108824	STELO			ROD
0175	2-91680	DADO M8			NUT
0176	2-00723	DADO M8			NUT
0177	2-02301	VITE M8X25			SCREW
0178	2-03391	TERMINALE M8			TERMINAL
0179	262382	KIT GUARNIZIONI CILINDRO			CYLINDER SEALS KIT

9150




	<b>A 9824 TI LL</b>	<b>Fig. AI</b>	<b>01 / 13</b>	<b>Gr.torretta</b>
--	---------------------	----------------	----------------	--------------------

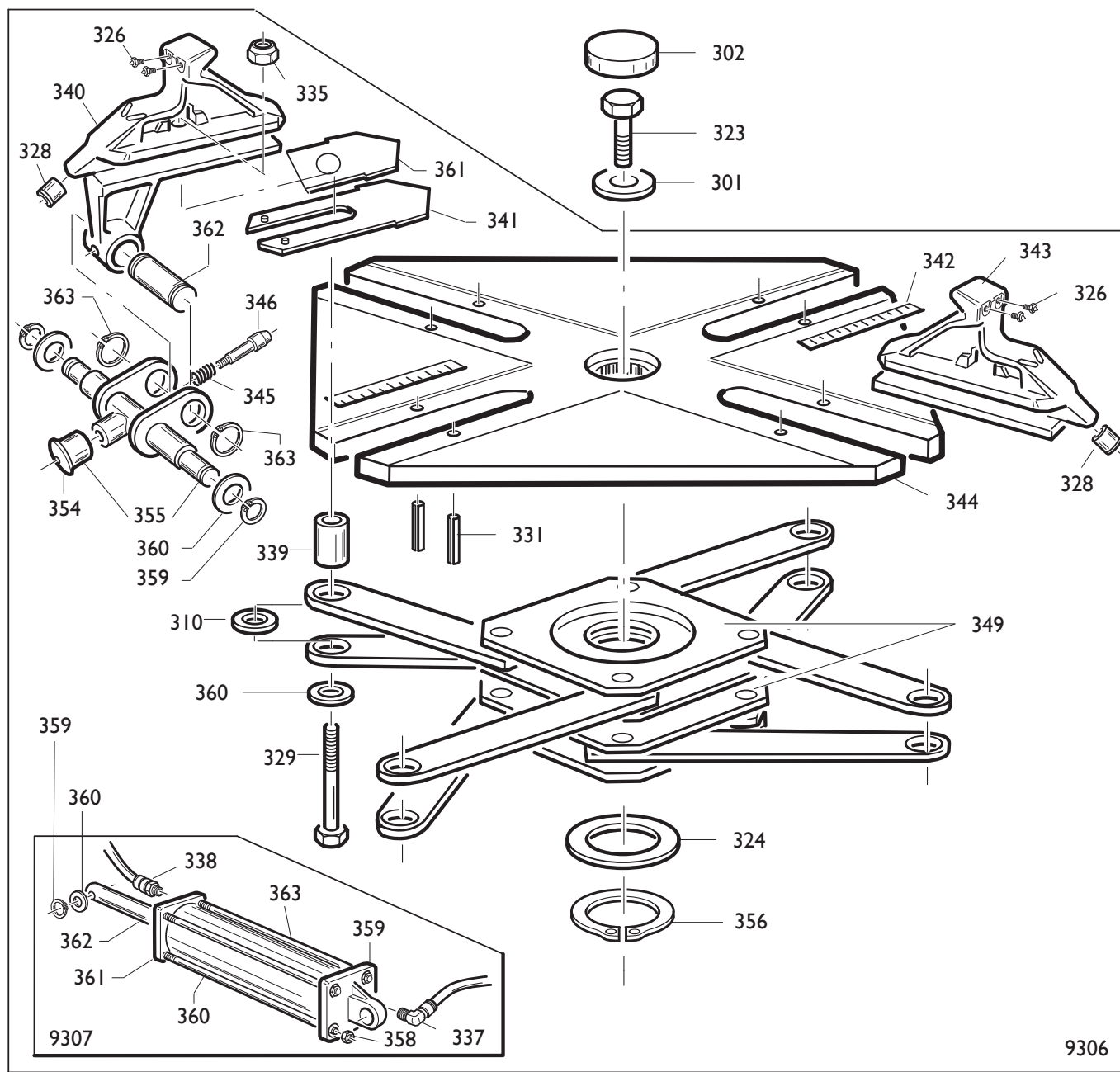
9150	5-102266	TORRETTA	HEAD
0101	4-103933	PERNO	PIN
0102	4-103266	GANCIO	HOOK
0103	5-101265	BIELLA	TRACE
0104	4-103932	PERNO	PIN
0105	5-101266	BIELLA	TRACE
0106	4-104981	LAMIERA	METAL SHEET
0107	4-103502	INSERTO	INSERT
0108	4-103256	LEVA	LEVER
0109	2-71581	SPINA	PLUG
0110	4-103264	INGRANAGGIO	GEAR
0111	4-106611	INSERTO	INSERT
0113	315274	RONDELLA	WASHER
0114	2-00025	SEEGER	SEEGER
0115	2-02569	VITE	SCREW
0116	4-106610	COPERTURA	CASING
0117	2-72205	VITE	SCREW
0118	2-03438	VITE	SCREW
0119	2-02096	GRANO	SCREW
0120	2-01040	GRANO	SCREW
0121	4-106638	TORRETTA+PERNI	TOOL+PINS





	<b>A 9824 TI LL</b>	<b>Fig. B</b>	<b>01 / 13</b>	<b>Cassone.</b>
--	---------------------	---------------	----------------	-----------------

0202	238911	PROLUNGA APPOGGIO	EXTENSION CORD
0203	239050	BIELLA	TRACE
0204	315522	SUPPORTO	SUPPORT
0205	339046	PERNO BIELLA	PIN
0206	339456	PERNO MANIGLIA	PIN
0207	341176	COFANO	HOOD
0209	422019	PIEDE	FOOT
0210	423405	CONTENITORE	CONTAINER
0211	425219	MANOPOLA	KNOB
0212	429006	TAPPO	SHIELD
0213	429976	PROTEZIONE	SHIELD
0214	436199	APPOGGIO	RIM SUPPORT
0215	2-00215	RONDELLA	WASHER
0216	2-01122	ANELLO	RING
0217	2-01885	VITE	SCREW
0218	2-01223	VITE M6X16	SCREW
0219	2-00127	DADO M6	NUT
0220	418135	ADESIVO ROTAZIONE	LABEL
0221	2-00310	VITE M6X20	SCREW
0222	2-00211	RONDELLA D.6	WASHER



	<b>A 9824 TI LL</b>	<b>Fig. C</b>	<b>01 / 13</b>	<b>Autocentrante T.I. 10÷24"</b>
--	---------------------	---------------	----------------	--------------------------------------

0300	238548	KIT GUARNIZIONI	SEALS KIT
0301	323363	RONDELLA	WASHER
0302	426514	TAPPO	PLUG
0323	2-01216	VITE	SCREW

9306	5-100461	AUTOCENTRANTE T.I.	TURNTABLE T.I.
0310	437964	RONDELLA	WASHER
0324	455082	RONDELLA	WASHER
0326	339146	PUNTE DI BLOCC.	LOCKING PEAK
0328	441100	RACCORDO T.I.	CONNECTOR T.I.
0329	2-02199	VITE	SCREW
0331	2-01059	SPINA	PLUG
0335	2-02200	DADO	NUT
0339	353803	BOCCOLA	BUSHING
0340	5-100460	APPOGGIO T.I. TRAINANT.	RIM SUPPORT T.I.
0341	4-101441	COPRIASOLA	COVER
0342	4-101456	TARGHETTA	DATA PLATE
0343	5-100459	APPOGGIO T.I. TRAINATO	RIM SUPPORT T.I.
0344	4-101438	PIATTO	PLATE
0345	4-101422	MOLLA	SPRING
0346	4-101444	INNESTO	PIN
0354	4-109384	POMOLO	KNOB
0355	5-103522	MANOVELLA+POMOLO	CRANK
0349	4-101651	FLANGIA	FLANGE
0356	2-01283	SEEGER D.65	SEEGER
0359	2-00025	SEEGER D.12	SEEGER
0360	2-00214	RONDELLA D.12	WASHER
0361	4-101453	SLITTA	COVER
0362	4-101442	PERNO	PIN
0363	2-71587	SEEGER D.20	SEEGER

9307	5-100455	CILINDRO DESTRO	CYLINDER RIGHT
9307	5-100454	CILINDRO SINISTRO	CYLINDER LEFT
0337	3-02044	RACCORDO	CONNECTOR
0338	3-02045	RACCORDO	CONNECTOR
0359	4-115948	FLANGIA POST.	FLANGE
0360	4-115951	CAMICIA	LINER
0361	5-105111	FLANGIA ANT.	FLANGE
0362	4-115959	STELO	ROD
0363	4-115949	TIRANTE	PIN
0358	2-01137	DADO M8	NUT

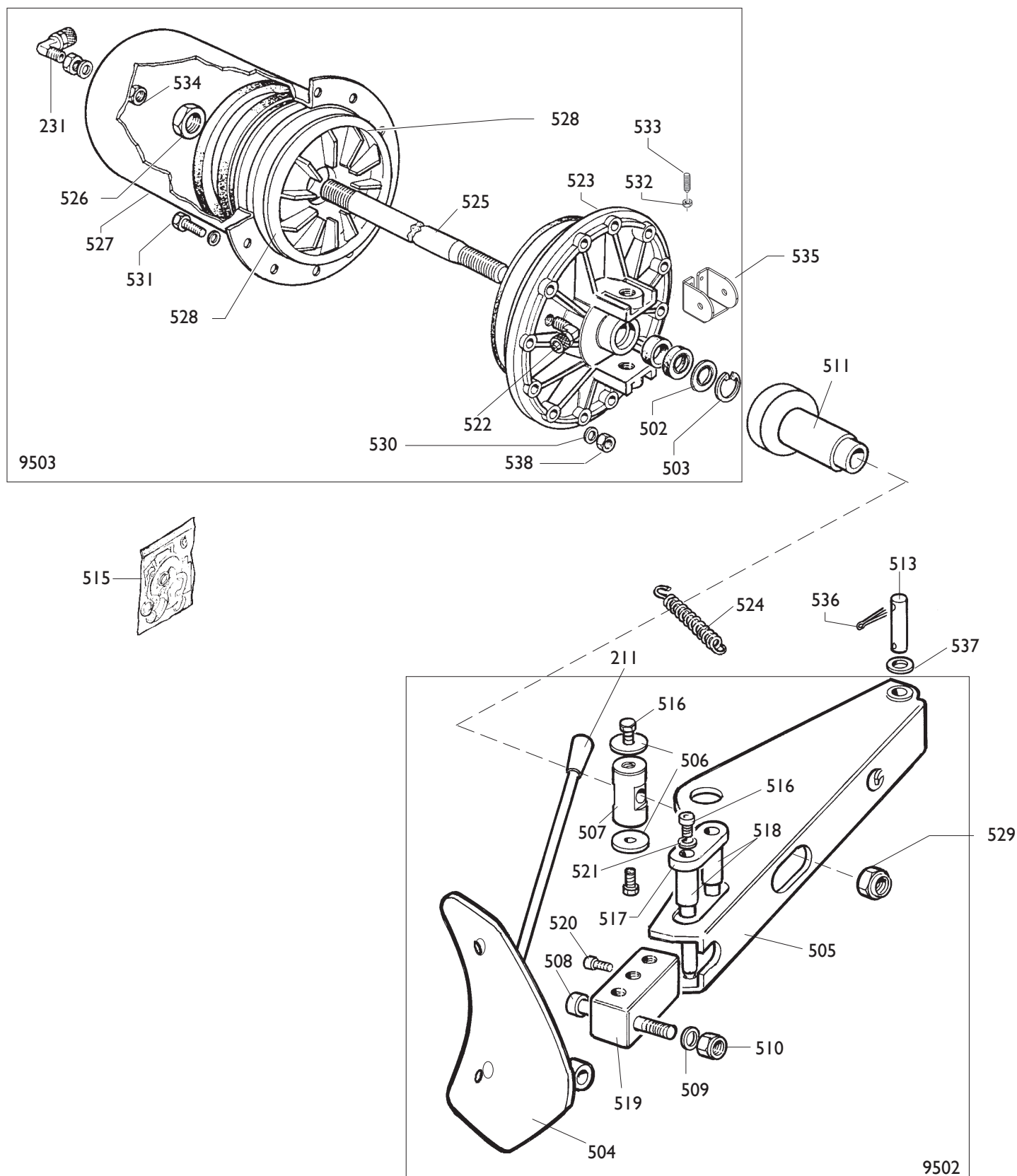


Ø6	I-01684	TUBO	PIPE
Ø8	I-01683	TUBO	PIPE
0223	252625	PEDALE	PEDAL
0224	346266	TUBO	PIPE
0225	342289	TUBO Ø10	PIPE
0245	I-04223	TUBO	PIPE
0251	342286	STAFFA	BRACKET
0230	241841	RACCORDO	CONNECTOR
0262	3-00117	RACCORDO	CONNECTOR

9202	242290	VALVOLA	VALVE
0226	3-00403	CARTUCCE	CARTRIDGE
0227	3-00287	RACCORDO	CONNECTOR
0228	243020	VALVOLA	VALVE
0243	3-00051	RACCORDO	CONNECTOR
0252	2-94066	VITE	SCREW

9201	252568	GRUPPO	ASSEMBLY
0232	235463	VALVOLA	VALVE
0233	3-00365	VALVOLA	VALVE
0234	3-00432	VALVOLA	VALVE
0235	3-00221	RACCORDO	CONNECTOR
0246	3-00135	NIPPLO	CONNECTION
0236	3-00138	RACCORDO	CONNECTION
0237	3-00004	INNESTO	CLUTCH
0238	352614	TUBO L.1900mm	PIPE
0245	338576	DISTANZIALE	SPACER
0247	452624	ANTIVIBRANTE	ANTISHOCK
0253	3-00460	RACCORDO	CONNECTION
0255	352619	CAPPELOTTO	CUP
0256	352698	SUPPORTO VALVOLA	SUPPORT
0258	2-00295	VITE M4X8	SCREW
0259	2-00209	RONDELLA D.4	WASHER
0260	2-00320	VITE M8	SCREW
0261	2-00212	RONDELLA	WASHER

9203	252600	SCATOLA	BOX
0232	235463	VALVOLA	VALVE
0238	352614	TUBO L.1900mm	PIPE
0239	262971	TUBO	PIPE
0240	3-00489	MANOMETRO	PRESSURE GAUGE
0241	3-00103	RACCORDO	CONNECTOR
0244	3-00007	INNESTO	CLUTCH
0248	353537	SUPPORTO MANOMETRO	SUPPORT
0249	325035	TUBO D.6 L.180	PIPE
0250	2-71485	VITE M3,9X13	SCREW
0257	234171	SCATOLA MANOMETRO	PRESSURE GAUGE BOX
0263	3-00460	RACCORDO	CONNECTOR
0264	403571	FASCETTA	CLAMP



	<b>A 9824 TI LL</b>	<b>Fig. E</b>	<b>01 / 13</b>	<b>Stallonatore</b>
--	---------------------	---------------	----------------	---------------------

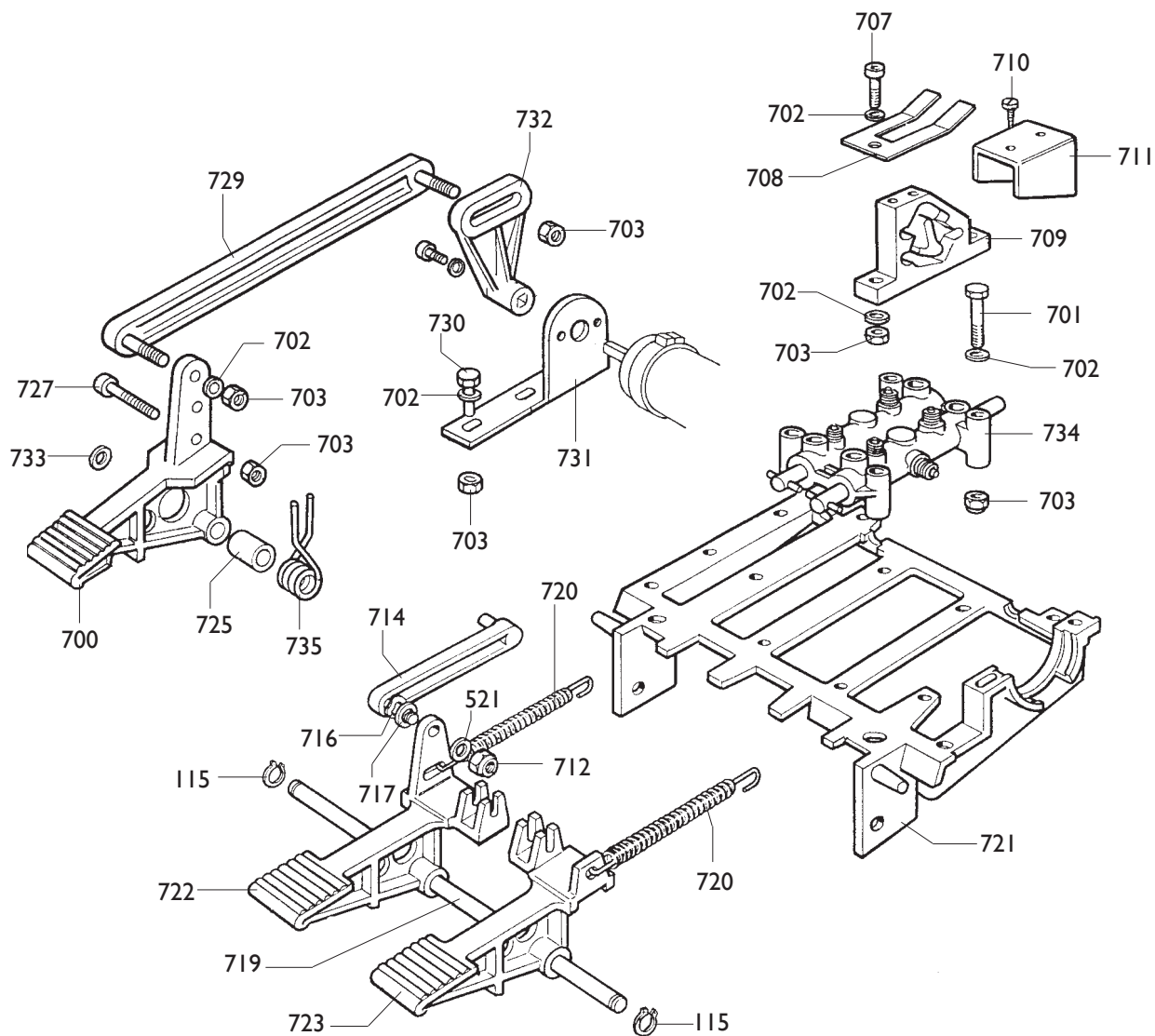
0211 425219 MANIGLIA HANDLE

9503	5-100484	CILINDRO	CYLINDER
0231	3-00517	RACCORDO	CONNECTOR
0502	325561	RONDELLA	WASHER
0503	434031	ANELLO	RING
0522	3-00222	RACCORDO	CONNECTOR
0523	351905	FLANGIA	FLANGE

9502	245743	BRACCIO	ARM
0504	224000	PALETTA	BEAD BREAKER
0505	245701	BRACCIO	ARM
0506	323901	RONDELLA	WASHER
0507	339045	PERNO	PIN
0508	324008	VITE M12x90	SCREW
0509	2-02249	RONDELLA	WASHER
0510	422255	DADO	NUT
0516	2-00372	VITE	SCREW
0517	345616	FERMO	RETAINER
0518	345617	PUNTE DI BLOC.	LOCKING PEAK
0519	345618	BLOCCHETTO	BLOCK
0520	2-00308	VITE	SCREW
0521	2-01299	RONDELLA	WASHER

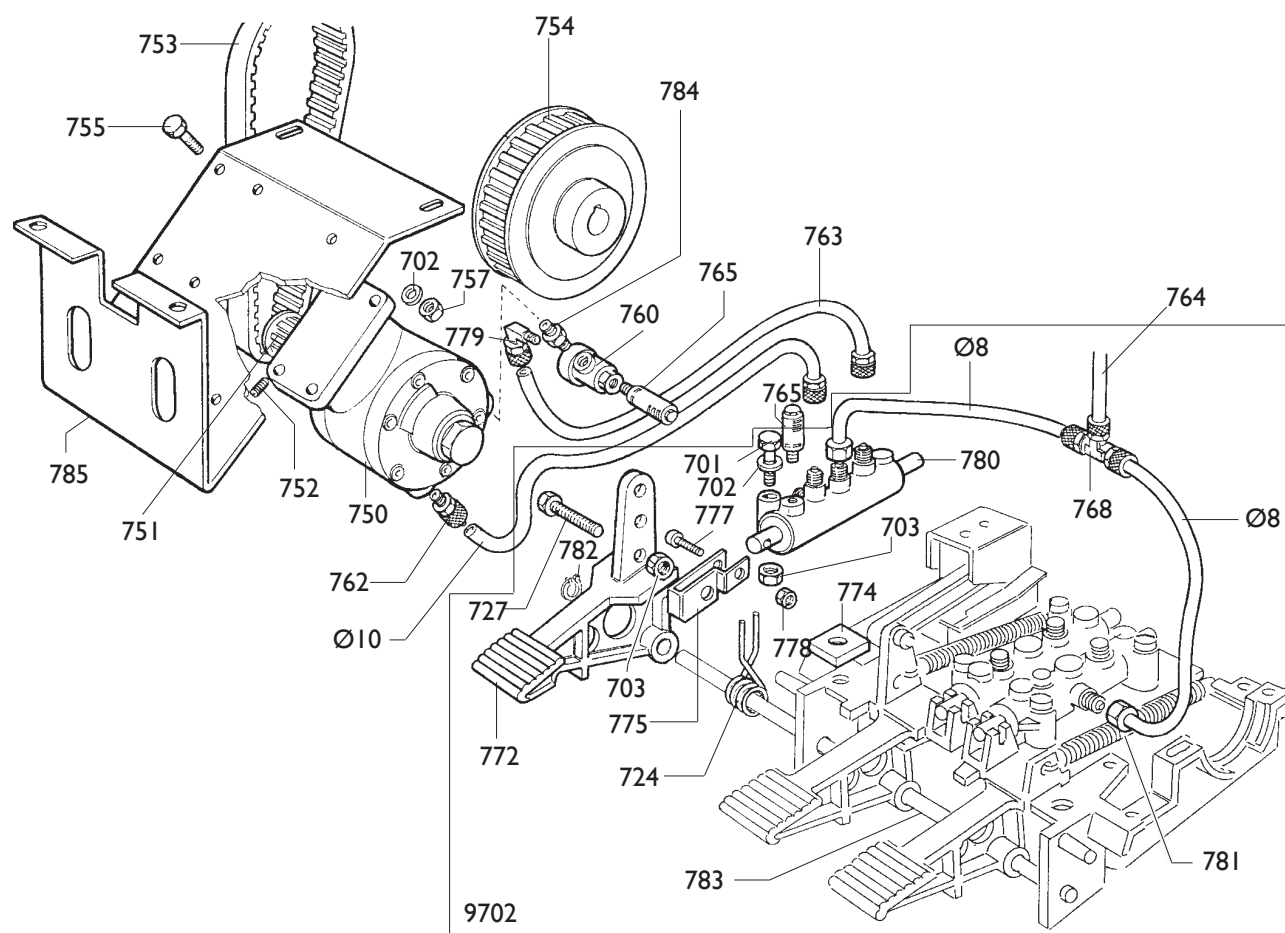
0511	239061	TAMPONE	PAD
0513	323903	FULCRO	FULCRUM
0515	238212	KIT GUARNIZIONI	SEALS KIT
0524	4-101930	MOLLA	SPRING
0525	4-101628	STELO	SHAFT
0526	2-00989	DADO M18	NUT
0527	330190	CAMICIA	LINER
0528	337848	PISTONE	PISTON
0529	2-01242	DADO M18	NUT
0530	2-00211	RONDELLA D.6	WASHER
0531	2-00310	VITE M6x20	SCREW
0532	2-00992	DADO M14	NUT
0533	431864	VITE	SCREW
0534	333524	DADO 1/4	NUT 1/4
0535	4-101742	SUPPORTO BRACCIO	ARM SUPPORT
0536	435055	MOLLA D.2X10	SPRING
0537	2-01045	RONDELLA D.16	WASHER
0538	436779	DADO M6	NUT

9701



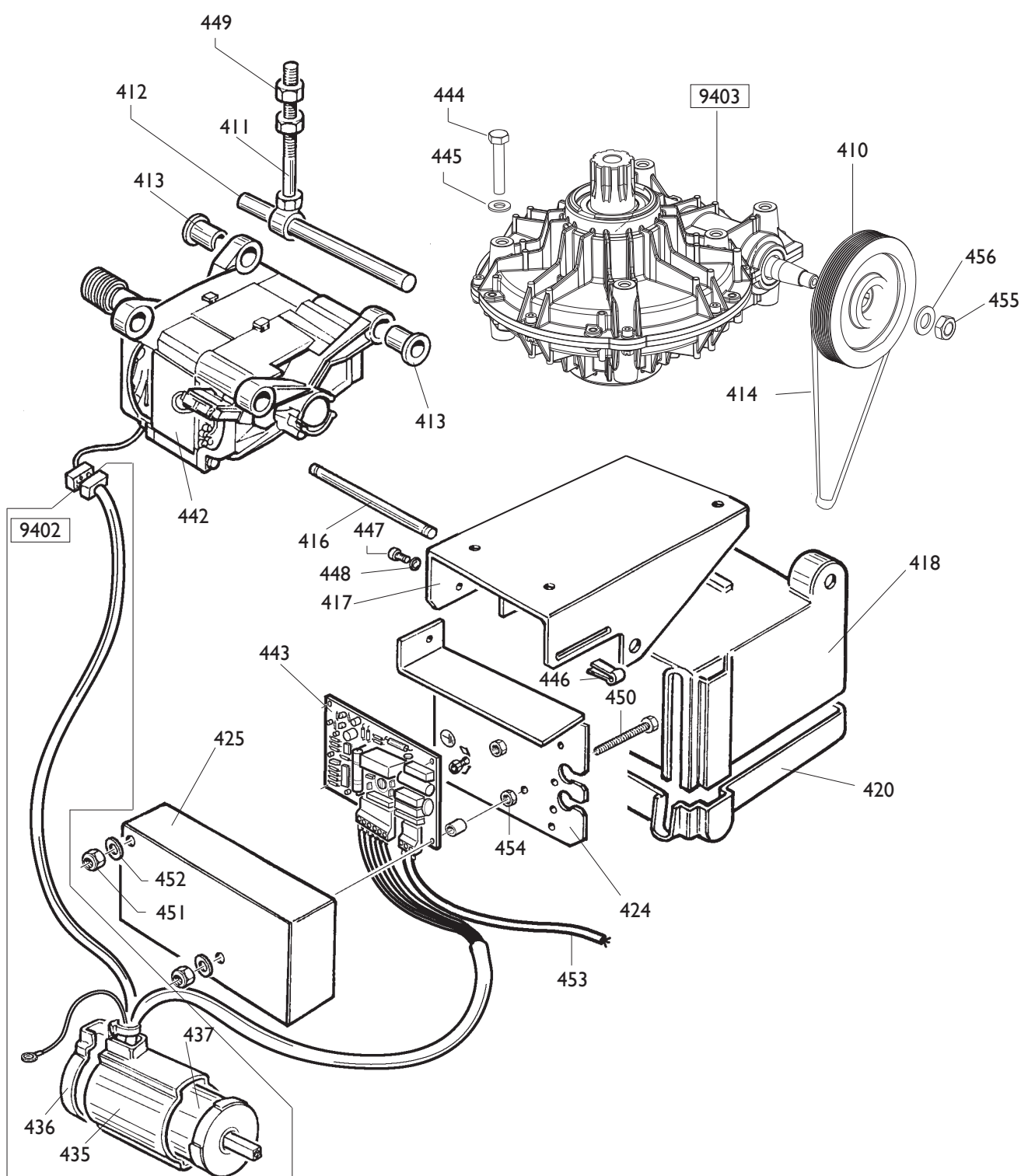


9701	241201	PEDALIERA	CONTROL PEDAL
0115	2-00025	ANELLO	RING
0521	2-00212	RONDELLA	WASHER
0700	5-102714	PEDALE INVERTITORE	PEDAL
0701	2-00411	VITE	SCREW
0702	2-00211	RONDELLA	WASHER
0703	2-01979	DADO	NUT
0707	2-00312	VITE	SCREW
0708	325019	BALESTRA	LEAF SPRING
0709	425020	CAMMA	CAM
0710	2-01272	VITE	SCREW
0711	325018	CAVALLOTTO	U-BOLT
0712	2-01137	DADO	NUT
0714	425014	BIELLA	TRACE
0716	2-02247	RONDELLA	WASHER
0717	309358	RONDELLA	WASHER
0719	325583	PERNO	PIN
0720	410628	MOLLA	SPRING
0721	524273	SUPPORTO	SUPPORT
0722	325031	PEDALE AUTOCENT.	PEDAL
0723	325032	PEDALE STALLON.	PEDAL
0725	325050	DISTANZIALE	SPACER
0727	2-00366	VITE	SCREW
0729	429009	BIELLA INVERT.	TRACE
0730	2-00362	VITE	SCREW
0731	334758	SUPPORTO	SUPPORT
0732	404283	LEVA	LEVER
0733	452011	BOCCOLA	BUSHING
0734	5-102739	RUBINETTO DOPPIO	COCK
0735	4-109664	MOLLA	SPRING



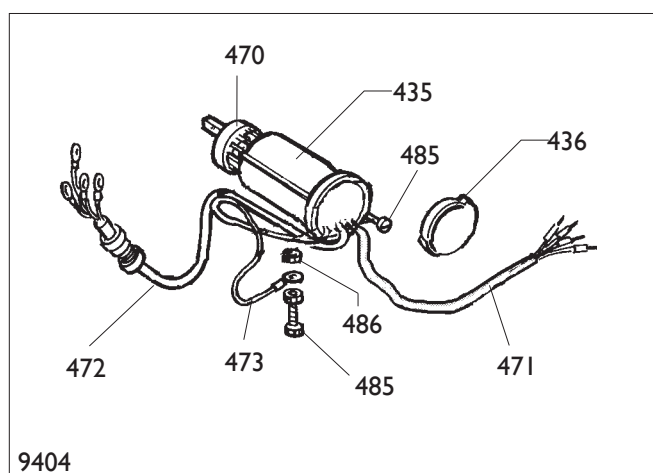
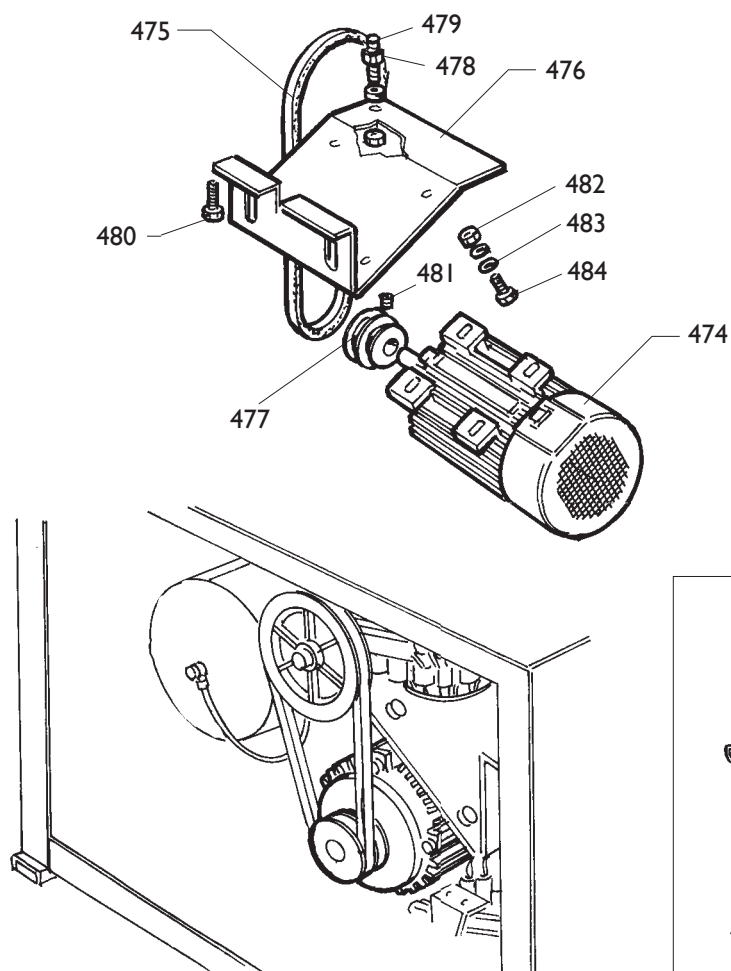
	<b>A 9824 TI LL</b>	<b>Fig. G</b>	<b>01 / 13</b>	<b>Pedaliere pneumatica</b>
--	---------------------	---------------	----------------	-----------------------------

9702	270526	PEDALIERA	CONTROL PEDAL
0701	2-00411	VITE	SCREW
0702	2-00211	RONDELLA	WASHER
0703	2-01979	DADO	NUT
0724	4-109664	MOLLA	SPRING
0727	2-00366	VITE	SCREW
0768	3-00112	RACCORDO	CONNECTOR
0772	252030	PEDALE INVERT.	PEDAL
0774	329058	PIASTRINA	PLATE
0775	331381	BIELLA	TRACE
0777	2-00911	VITE	SCREW
0778	2-01018	DADO	NUT
0780	5-102740	RUBINETTO SINGOLO	COCK
Ø8	1-01683	TUBO	PIPE
Ø10	1-01685	TUBO	PIPE
0750	319135	MOTORE	MOTOR
0751	319076	PULEGGIA	PULLEY
0752	2-00801	VITE	SCREW
0753	3-00585	CINGHIA	BELT
0754	319073	PULEGGIA CONDOTTA	PULLEY
0755	2-00363	VITE	SCREW
0757	422288	DADO	NUT
0760	3-00316	VALVOLA	VALVE
0762	3-00040	RACCORDO	CONNECTOR
0764	337328	TUBO L.840mm	PIPE
0765	3-00183	SILENZIATORE	SILENCER
0779	3-00109	RACCORDO	CONNECTOR
0781	410628	MOLLA	SPRING
0782	2-00025	SEEGER	SEEGER
0783	325583	PERNO	PIN
0784	3-00141	NIPPLO	NIPPLO
0785	334768	CULLA	SUPPORT



	<b>A 9824 T.I. LL</b>	<b>Fig. H</b>	<b>01 / 13</b>	<b>Electric system with gear box</b>
--	-----------------------	---------------	----------------	--------------------------------------

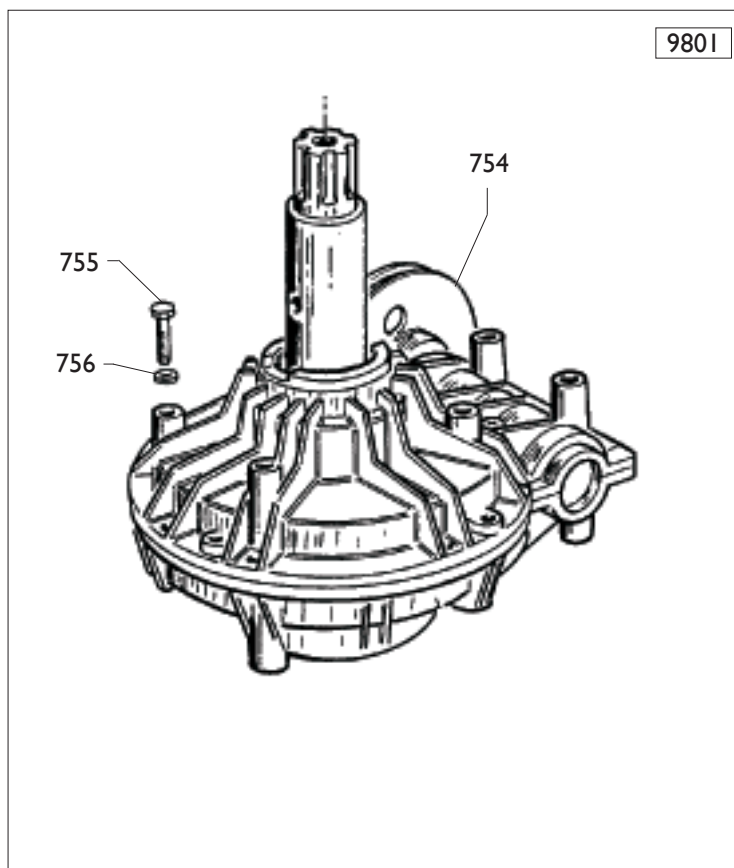
9403	5-102652	RIDUTTORE	GEAR BOX
0410	354082	PULEGGIA	PULLEY
0411	5-100519	TIRANTE	STAY ROD
0412	340367	PERNO	PIN
0413	440365	BOCCOLA	BUSHING
0414	3-00575	CINGHIA	BELT
0416	346012	PERNO	PIN
0417	346017	SUPPORTO	SUPPORT
0418	462572	COPERCHIO SUP.	LID
0420	462571	COPERCHIO INF.	LID
0424	349299	SUPPORTO	SUPPORT
0425	462573	COPERCHIO SK	LID
0442	462139	MOTORE 110V	MOTOR
0443	462138	SK ELETTRON. 110V	P.C.BOARD
9402	262570	CAVO COLL.MOT.-INV.	CABLE
0435	432065	PROTEZIONE	SHIELD
0436	430991	COPERCHIO	LID
0437	5-102744	INVERTITORE	REVERSER
0444	2-01046	VITE M10X55	SCREW
0445	2-00213	RONDELLA M10	WASHER
0446	2-01984	FERMAGLIO	STOP
0447	2-00715	VITE M6X12	SCREW
0448	2-71544	RONDELLA D.6	WASHER
0449	2-91726	DADO M10	NUT
0450	2-91645	VITE M4X70	SCREW
0451	2-01018	DADO M4	NUT
0452	2-00209	RONDELLA D.4	WASHER
0453	247801	CAVO RETE	CABLE
0454	2-00143	DADO M4	NUT
0455	2-00941	DADO M14	NUT
0456	2-00215	RONDELLA M14	WASHER


**IMPIANTO ELETTRICO**

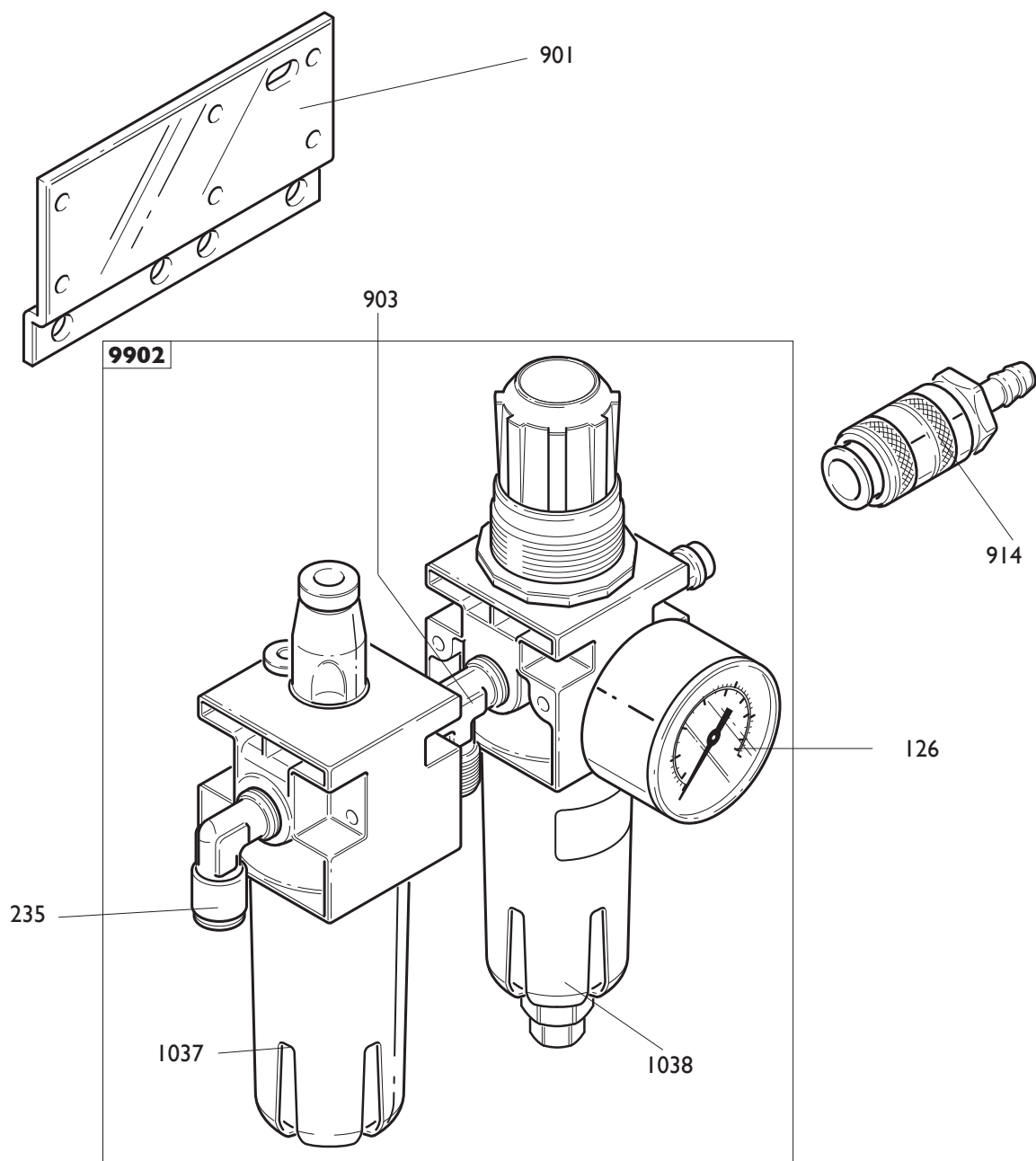
9404	235574	3ph
0470	5-102742	INVERTITORE
0471	235518	CAVO RETE
0472	225390	CAVO MOTORE
0473	225051	CAVALLOTTO
0485	2-00605	VITE M4X10
0486	2-00143	DADO M4
0435	432065	PROTEZIONE
0436	430991	COPERCHIO
0474	412959	MOTORE 3ph 400V
0475	3-00555	CINGHIA
0476	334768	CULLA
0477	325274	PULEGGIA
0478	2-00152	DADO M10
0479	455920	VITE SPEC.M10X60
0480	2-00328	VITE M10X20
0481	2-01091	VITE M6X5
0482	421349	DADO M8
0483	339208	RONDELLA M8
0484	2-00374	VITE M8X25

**ELECTRIC SYSTEM**

3ph
REVERSER
CABLE
CABLE
U-BOLT
SCREW
NUT
SHIELD
LID
MOTOR 3ph 400V
BELT
CRADLE
PULLEY
NUT
SCREW
SCREW
SCREW
NUT
WASHER
SCREW



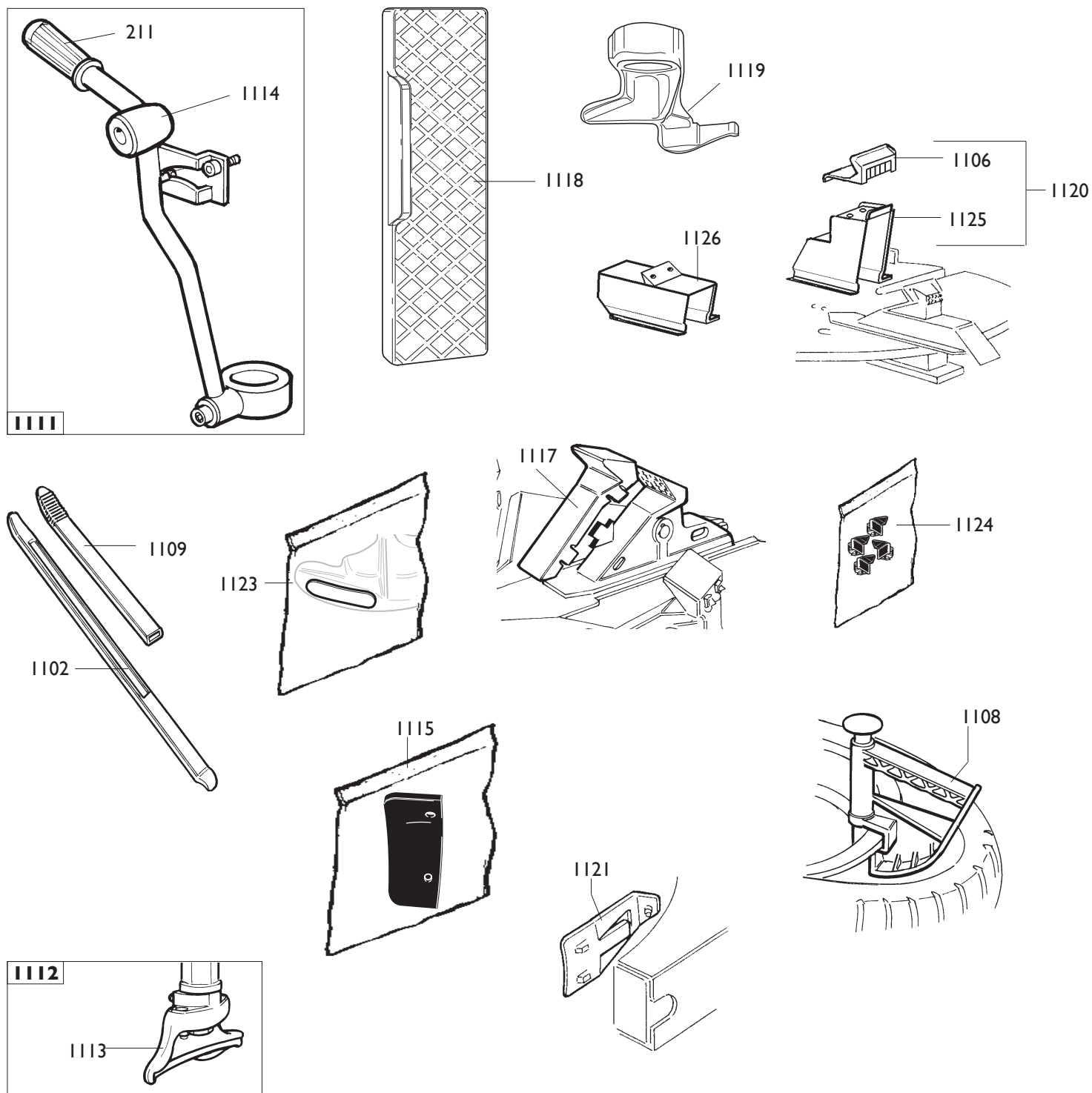
9801	5-102650	RIDUTTORE	GEAR BOX
9801	5-102651	RIDUTTORE pneum.	GEAR BOX
0754	319073	PULEGGIA (pneum.)	PULLEY
0754	314344	PULEGGIA	PULLEY
0755	2-01046	VITE M10X55	SCREW
0756	2-00213	RONDELLA M10	WASHER





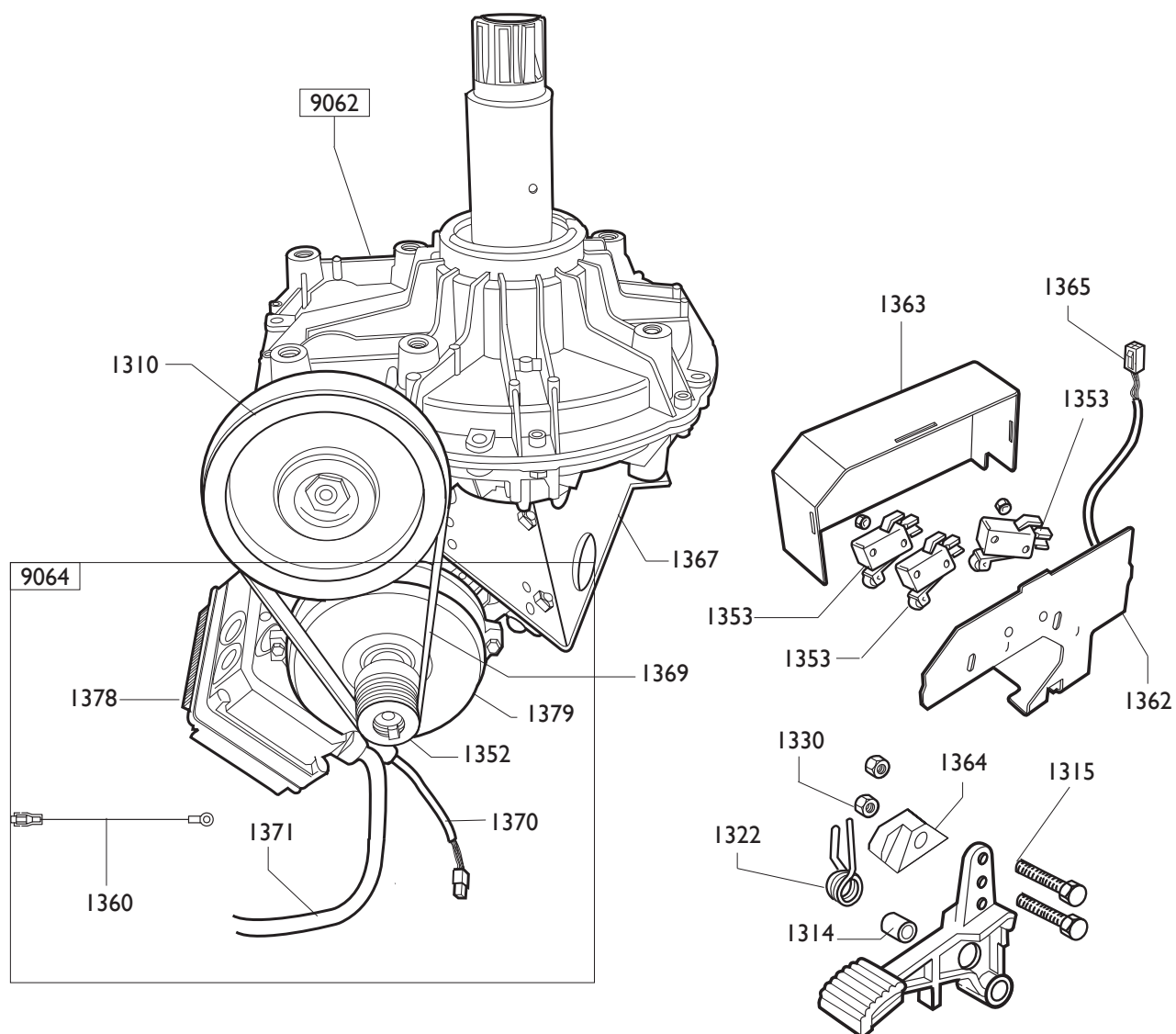
	<b>A 9824 TI LL</b>	<b>Fig. M</b>	<b>01 / 13</b>	<b>Gruppo filtro</b>
--	---------------------	---------------	----------------	----------------------

0901	335695	STAFFA	BRACKET
0914	3-00257	GIUNTO	CUOPLING
9902	456522	FILTRO	FILTER
0903	3-00001	RACCORDO	CONNECTOR
0126	3-00488	MANOMETRO	PRESSURE GAUGE
0235	3-00221	RACCORDO	CONNECTOR
1037	457511	BICCHIERE LUBRIF.	BOWL
1038	457512	BICCHIERE FILTRO	BOWL



	<b>A 9824 T.I. LL</b>	<b>Fig. N</b>	<b>01 / 13</b>	<b>Accessories</b>
--	-----------------------	---------------	----------------	--------------------

1102	4-108275	LEVA	LEVER
1106	435202	CUNEO	WEDGE
1108	801435685	PINZA	PLIERS
1109	8-11100104	KIT 6 PROT.LEVA	SHIELD
1115	8-11100105	KIT 6 PROT.PALETТА	SHIELD
1117	8-11100108	KIT 12 PROT.CUNEO	SHIELD
1118	801458663	PROTEZIONE	SHIELD
1119	801252083	TORRETTA 8"	M/D HEAD
1120	801258650	KIT 4 ATTACCHI MOTO	ADAPTOR
1121	801260402	STALLONATORE	BEAD BREAKER
1123	8-11100107	KIT 5 PASTIGLIE	INSERT
1124	8-11100106	KIT 10 INSERTI	INSERT
1125	258649	BLOCCAGGIO	LOCKING
1126	801263517	KIT 4 ATTACCHI MOTO 8"-24"	ADAPTOR
1111	801242834	LEVA premitallone	LEVER
0211	425219	MANOPOLA	KNOB
1114	440600	TESTINA	HEAD
1112	801250309	KIT TORRETTA PLASTICA	PLASTIC M/D HEAD
1113	450310	TORRETTA PLASTICA	PLASTIC M/D HEAD



		MOTORE+INV 2 CONDENSATORI	MOTOR+REV.
9064	5-104986	200-230V Iph	200-230V Iph
1378	4-115396	SCHEDA ELETTR. 230V	P.C.BOARD
1352	4-102397	PULEGGIA	PULLEY
1370	4-109895	CAVO COMANDI 230V	CABLE
1379	4-113412	MOTORE(SENZA SCHEDA)200-230/1/50-60HZ	MOTOR
1360	4-101659	CAVO TERRA	CABLE
1371	4-111586	CAVO RETE	CABLE

		MOTORE+INV	MOTOR+REV.
9064	5-104995	115V Iph	115V Iph
1371	4-111586	CAVO RETE	CABLE
1378	4-113414	SCHEDA ELETTR. 115V	P.C.BOARD
1352	4-102397	PULEGGIA	PULLEY
1360	4-101659	CAVO TERRA	CABLE
1370	4-109895	CAVO COMANDI 115V	CABLE
1379	4-113412	MOTOINVERTER 115V	MOTOINVERTER 115V

9062	5-101783	RIDUTTORE	GEAR BOX
1310	339870	PULEGGIA	PULLEY

1315	5-102714	PEDALE	PEDAL
1314	325050	DISTANZIALE	SPACER
1322	4-109664	MOLLA	SPRING
1353	440874	MICROINTERUTORE	MICROSWITCH
1330	346008	BOCCOLA	BUSHING
1362	4-102401	SUPPORTO MICRO	SUPPORT
1363	4-102402	COPERCHIO	CASING
1364	461535	SUPPORTO MICRO	SUPPORT
1365	4-101693	CAVO COMANDI PEDALIERA	CABLE
1367	4-109965	CULLA MOTORE 230/115V	SUPPORT
1369	3-00573	CINGHIA	BELT

A large rectangular area containing 20 horizontal dotted lines, spaced evenly, intended for writing or drawing.

.....

.....

.....

.....

.....

.....

.....

.....

.....

.....

.....

.....

.....

.....

.....

.....

.....

.....

.....

.....

.....

Il disegno è realizzato con tutti i particolari ma solo quelli codificati sono forniti come ricambi. L'Azienda si riserva la facoltà di apportare modifiche senza preavviso.



Via per Carpi, n°9 - 42015 Correggio (RE) ITALY  
Tel. ++39 0522 639111 - Fax ++39 0522 639150  
[www.corgi.com](http://www.corgi.com) - [info@corgi.com](mailto:info@corgi.com)

The drawing shows all parts but only the coded parts are supplied as spares. The Company reserves the right to make modifications without prior notice.

UTB - Cod. 4-I 16871 - 01\_2013